

SUPPLEMENTARY MATERIAL

Table of Contents

SUPPLEMENTARY MATERIAL	1
Methods	2
Inclusion Criteria.....	2
Exclusion Criteria	2
Definitions	2
Questionnaires	3
Patient health questionnaire (PHQ-15)	3
Medical Research Council scale (MRC).....	3
Fatigues Severity Scale	3
MRI	3
Lung MRI.....	3
Lung MRI Analysis.....	3
Cardiac MRI.....	3
Cardiac MRI image analysis	4
Spirometry and Gas transfer	5
Cardiopulmonary exercise test (CPET)	5
Impact of ethnicity on exercise parameters and relationship between objective measures of health	5
Correlation between breathlessness, pulmonary function and MRI parenchymal abnormalities	5
Table 1. Details on missing data for variables in COVID-19 patients at 6 months and controls	6
Figure 1. Recruitment flow-chart of A) patients and B) Controls	7
Figure 2. CMR/CPET determinants of shortness of breath (MRC dyspnea scale >1)	8
References	9

Methods

Inclusion Criteria

We included all patients with moderate to severe acute respiratory distress syndrome Coronavirus-2 (SARS-CoV-2 infection) (see below for definition), confirmed by a reverse transcription and polymerase chain reaction (RT-PCR) nasopharyngeal swab test.

Controls were non-hospitalized subjects (invited from the community) without symptoms or signs of a respiratory tract infection of coronavirus disease, who were screened for SARS-CoV-2 antibodies and tested negative.

Exclusion Criteria

Subjects with contraindications to magnetic resonance imaging (metal implant in body, known claustrophobia, pacemakers, contrast allergy) and severe comorbidities – end-stage renal, cardiac, liver, neurological disease – were excluded from the study.

Definitions

Moderate to severe SARS-CoV-2 infection: Severity of acute illness on admission was defined by the World Health Organisation (WHO) interim clinical guidance. All patients with clinical signs of pneumonia such as respiratory rate > 30 breaths/min; or severe respiratory distress; or SpO₂ < 90% (on room air) and requiring hospital admission for more than 48 hours were assessed to have moderate to severe coronavirus disease (COVID-19).¹

Severity of disease (or clinical response) during admission: Patient response in hospital was defined by the WHO ordinal scale for clinical improvement.² A score 0 was given to an uninfected individual, 1 to an ambulatory patient without limitations of activities, 2 where there were limitations of activities, 3 for a hospitalized patient not on oxygen (O₂) therapy, 4 for O₂ supplementation via simple face mask or nasal prongs, 5 for the administration of non-invasive ventilation (NIV) or high flow O₂, 6 for being intubated and on mechanical ventilation, 7 for requiring ventilation and additional organ support such as renal replacement therapy and extracorporeal membrane oxygenation (ECMO), and 8 for death.²

Lymphocytopenia: Defined as a lymphocyte count of less than 1000 cells per cubic millimetre.³

Thrombocytopenia: Defined as a platelet count of less than 100,000 per cubic millimetre.³

Acute kidney injury: Acute kidney injury (AKI) was defined based on the highest serum creatinine level and urine output. A diagnosis of AKI was made based on any of the following: an increase in serum creatinine levels by 0.3 mg/dl or greater (26.5 µmol/l or greater) within 48 hours; an increase in serum creatinine levels to 1.5 times of the baseline level or greater, which was known or presumed to have occurred within 7 days; or urine volume of below 0.5 ml/kg/h for 6 consecutive hours.³

Acute cardiac injury: Acute cardiac injury was suspected when serum levels of cardiac biomarkers (high-sensitivity cardiac troponin I) were above the 99th percentile upper limit of normal or new abnormalities were seen on electrocardiography and echocardiography.³

Acute liver injury: Acute liver injury was defined as blood levels of alanine aminotransferase (ALT) or aspartate aminotransferase (AST) above three times the upper reference limit, alkaline phosphatase or gamma-glutamyl transferase levels above two times the upper reference limit.⁴

Questionnaires

Patient health questionnaire (PHQ-15)

The Patient Health Questionnaire-15 is an instrument used for assessing the burden of somatic symptoms.⁵ This scale was used to assess for the presence of a number of symptoms common in patients following COVID-19 infection.

Medical Research Council scale (MRC)

The MRC dyspnoea scale⁶ was used to assess the effects of breathlessness on daily activities. This scale was used to measure perceived respiratory disability on a scale of 1 (no breathlessness) to 5 (complete incapacity).

Fatigues Severity Scale

The Fatigue Severity Scale (FSS) is a symptom-specific outcome scale aimed at providing a standardized means of describing health state.⁷ The FSS comprises of nine statements, describing the severity and impact of fatigue, with a scale of possible responses ranging from 1 (“strongly disagree”) to 7 (“strongly agree”). FSS was reported as the mean score over the nine items; a higher mean score (≥ 4) indicates greater severity.

MRI

Scans were carried out during a single scan session on a Siemens Prisma 3T, with a Siemens 32-channel spine array and 30-channel body array used for cardiac and pulmonary imaging.

Lung MRI

A) Free breathing half-Fourier-acquisition single-shot turbo spin-echo (HASTE) MRI – [Typically axial and coronal; TR/TE = 750/49 ms; R=2; field of view = 380x320 mm,² slice thickness/spacing 8/0mm, 35 slices, matrix = 256x123]. T2-weighted HASTE images provide high-signal intensity in water-rich tissues. Lung abnormalities tend to appear bright, surrounded by air-filled parenchyma with low signal intensity.

Lung MRI Analysis

Axial and coronal thoracic HASTE images were qualitatively read by an expert radiologist (CX) and scored as 0 (0%), 1 (1–25%), 2 (26–50%), 3 (51–75%), or 4 (76–100%) depending on the extent of parenchymal involvement.

Cardiac MRI

The cardiac MRI protocol included routine clinical and advanced parametric mapping sequences. The cardiac MRI sequences were as follows:

A) Cine steady-state free precession (SSFP) imaging - [Three long-axis and short-axis stack; Typically TR/TE = 3.16/1.38ms; R = 3; flip angle = 65°; field of view = 360x270 mm, matrix 208x139, slice thickness/spacing 7/3mm]. This is used in the clinical setting to assess cardiac (left and right ventricular) mass, volumes, and function which may be affected in cardiovascular diseases.

B) Shortened Modified Look Locker T₁ mapping (ShMOLLI, Siemens prototype sequence WIP1048B) [Base, mid, apex short axis slices; TR/TE = 2.7/1.07ms, R = 2, flip angle = 35°, field

of view = 360×270 mm, matrix = 192×144; slice thickness = 8 mm. Inversion times in image acquisitions, waiting periods with conditional on-the-scanner T₁ map reconstruction as described previously⁸. This sequence helps assess the myocardial tissue characteristics which indicates if the myocardium has increased water content or fibrosis.⁹

C) T₂ mapping (Siemens Myomaps) - [Base, mid, apex short axis slices; bSSFP readout; TR/TE = 3/1.3ms, R = 2, flip angle = 20°, Matrix = 192×142, field of view = 360×270 mm, slice thickness = 8 mm]. This sequence is typically used to detect increased water content or swelling in myocardial tissue.

D) Late gadolinium imaging was acquired using a T₁-weighted phase-sensitive inversion recovery sequence following a bolus injection of 0.15 mmol/kg of body weight of gadolinium-based contrast agent (Dotarem) and a 10 ml saline flush. Typical scan parameters: [TR/TE/TI = 2.9/3.36/subject-specific ms; R = 2; flip angle = 55°; matrix = 144×256, field of view 380×285 mm, slice thickness = 8 mm.] Late gadolinium imaging is used in clinical cardiac MRI to detect regions of focal fibrosis or scar within the myocardium.

E) T₁-weighted imaging: Base, mid, and apical T₁ maps (ShMOLLI) were acquired 15 minutes after the administration of contrast. This sequence is used to estimate the extent of diffuse fibrosis or scar in the myocardium.

Cardiac MRI image analysis

All cardiac MRI images were analysed using cvi42 software (Circle Cardiovascular Imaging Inc., Version 5.11.4, Calgary, Canada). Blinded analyses of cardiac images were undertaken by BR, MC. Volume and function: Left and right ventricular short-axis epicardial and endocardial borders were manually contoured at end-diastole and end-systole (endocardial border only). Left and right ventricular end-diastolic (EDV) and end-systolic (ESV) volumes were used to calculate stroke volume (SV) as $SV = EDV - ESV$.¹⁰ Ejection fraction (EF) was calculated as a ratio of SV and EDV ($EF = SV/EDV$). LV mass was calculated by subtracting the endocardial volume from the epicardial volume, based on prior knowledge of myocardial specific gravity (1.05 g/cm³).¹¹ Volumes and mass were indexed to body surface area.

Analysis of T₁ and T₂ maps: All (pre and post-contrast) T₁ maps underwent strict quality control as previously described⁹ by an observer who underwent standardized institutional training.^{12,13} R² maps of ShMOLLI inversion recovery fit were used to verify the quality of T₁-maps on the scanner. Manual epicardial and endocardial contours were drawn on base, mid and apical slices, and average slice T₁ was derived. Extra-cellular volume (ECV) for the three slices was calculated from pre-and post-contrast T₁ maps and haematocrit (HCT) using the formula: $ECV = (\Delta[1/T_1\text{myocardium}]/\Delta[1/T_1\text{blood}]) * [1-Hct]$.

All T₂ maps also underwent strict quality control. Manual epicardial and endocardial contours were drawn on base, mid and apical slices (acquired at identical slice positions to pre and post-contrast T₁ maps). Average slice T₂ was derived for each slice.¹⁴

Late gadolinium enhancement (LGE): Endocardial and epicardial borders were drawn on the phase-sensitive inversion recovery (PSIR) images along with a reference region of interest (ROI) with normal myocardial intensity as 'remote' region. Hyperenhanced pixels were defined as those that were five standard deviations (5-SD) above the mean intensity of the reference ROI placed in a remote area of myocardium with no visual evidence of enhancement.¹⁴

Blinded qualitative assessment of LGE images was undertaken by an experienced CMR reader (BR) and visually classified as the following: 1) no LGE, 2) myocarditis pattern, 3) myocardial infarction, 4) LV/RV insertion point fibrosis, 5) mixed (infarction and myocarditis), 6) other (cardiomyopathy). All cases were also assessed for presence of pericardial effusion.¹⁵

Spirometry and Gas transfer

At least three spirometry measurements were performed, until acceptability criteria defined by the American Thoracic Society (ATS) and European Respiratory Society (ERS) were met.¹⁶ Bronchodilators were not administered. The largest FEV₁ and FVC of the triplicate readings and respective FEV₁/FVC ratio were reported.

Gas transfer assessment was carried out using a ten-second single breath hold technique, with methane as the tracer gas. Assessment was repeated until acceptability and repeatability criteria, as defined by ATS/ERS, were met.¹⁷ The measurements acquired (diffusion capacity for carbon monoxide (DLco) and alveolar volume (V_a) were adjusted for haemoglobin and standard pressure (760mm Hg).

Cardiopulmonary exercise test (CPET)

All patients performed symptom-limited incremental cycle ergometer exercise testing with electrocardiographic monitoring. The gas analyser was calibrated prior to each test. Each subject was fitted with a facemask incorporating a disposable flow turbine.

Continuous 12-lead electrocardiographic recordings were acquired for each subject. Oxygen saturation via pulse oximetry was recorded continuously. Blood pressure was measured with a manual sphygmomanometer every 3 to 4 minutes. Following 2 minutes of unloaded cycling, the work rate was increased to 20W. This was followed by a 10W/min ramp. Predetermined conditions for termination of the test included arrhythmia, chest pain, hypotensive response during exercise, or an excessive hypertensive response during the test (>250/115 mm Hg). Otherwise, participants were encouraged to reach their maximal work rate. Following peak effort, participants performed a further 3 minutes of unloaded cycling.

Maximal voluntary ventilation (MVV) was calculated by multiplying FEV₁ by 40. Peak oxygen uptake (VO_{2peak}) was predicted using the Wasserman weight algorithm.¹⁸ Maximum heart rate was predicted using the equation 220 – age in years.¹⁹ The V-slope method was used to identify the anaerobic threshold (AT). This was normalized to peak VO₂ as (VO₂ at AT/predicted peak VO₂) x 100). All data points were averaged every 20 seconds.

Impact of ethnicity on exercise parameters and relationship between objective measures of health

To assess the impact of ethnicity on differences in exercise parameters at 6 months, two general univariate linear models were used, one with oxygen consumption at peak exercise as the dependent variable and the other with $\dot{V}E/\dot{V}CO_2$ slope as the dependent variable. Participant status (COVID-19 patient or control) was used as a fixed factor, and BAME status was used as a covariate. Differences in oxygen consumption at peak exercise and $\dot{V}E/\dot{V}CO_2$ between COVID-19 patients and controls persisted when correcting for ethnicity (peak oxygen consumption p-value 0.031 and $\dot{V}E/\dot{V}CO_2$ p-value 0.0004).

To assess the impact of ethnicity on the relationship between CMR/CPET parameters and persistent cardiopulmonary symptoms at 6 months, binary logistic regression was performed as described in the manuscript, with the addition of BAME status for each independent variable assessed. The absence of a significant relationship between CMR/CPET parameters and persistent cardiopulmonary symptoms at 6 months persisted.

Correlation between breathlessness, pulmonary function and MRI parenchymal abnormalities

No significant correlations were observed between breathless (defined as MRC dyspnoea scale >1) and FEV₁ (rho=0.036), FVC (rho=0.020), FEV₁/FVC (rho=-0.261), DLco (rho=0.010) and the extent of lung parenchymal abnormalities on MRI (rho=-0.004) (p>0.05 for all assessments).

Table 1. Details on missing data for variables in COVID-19 patients at 6 months and controls.

Cohort, variable/s	Data, frequency (%)	Reason
Lung and Cardiac imaging		
COVID-19, all variables	44/46 (95.7%)	2 did not undergo imaging due to claustrophobia
COVID-19, late gadolinium enhancement and post-contrast T ₁	43/46 (93.5%)	2 did not undergo imaging due to claustrophobia, and 1 opted not to received gadolinium
CONTROL, all variables	28/30 (93.3%)	2 did not undergo imaging due to claustrophobia
CONTROL, Post-contrast T ₁	26/30 (86.6%)	2 did not undergo imaging due to claustrophobia, 2 failed QC
CONTROL, all variables	28/30 (93.3%)	2 did not undergo imaging due to claustrophobia
Cardiopulmonary exercise testing		
COVID-19, all variables	42/46 (91.3%)	4 were unable to perform the test (1 due to large body habitus, 1 due to claustrophobia on wearing a mask, 1 due to acrophobia when sitting on the bicycle, and 1 due to work commitments limiting the study visit)
CONTROL, all variables	27/30 (90.0%)	1 was unable to perform the test (due to large body habitus), 2 did not consent to the test
Data are n/N (%), where N is the total number of participants with available data.		

Figure 1. Recruitment flow-chart of A) patients and B) Controls. *see supplementary material Table 1 for details.

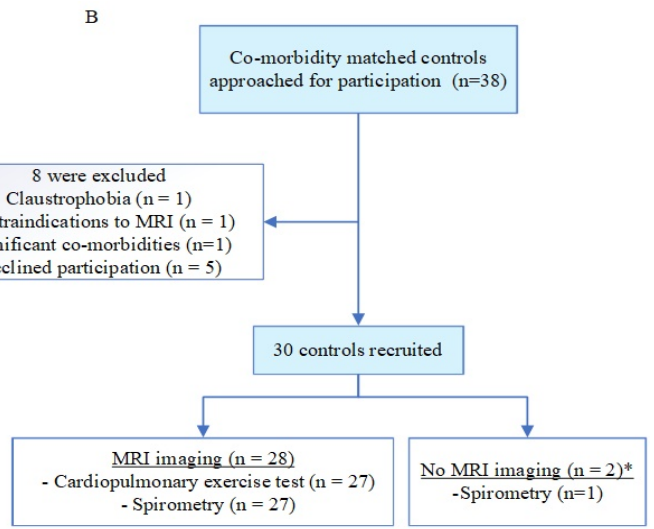
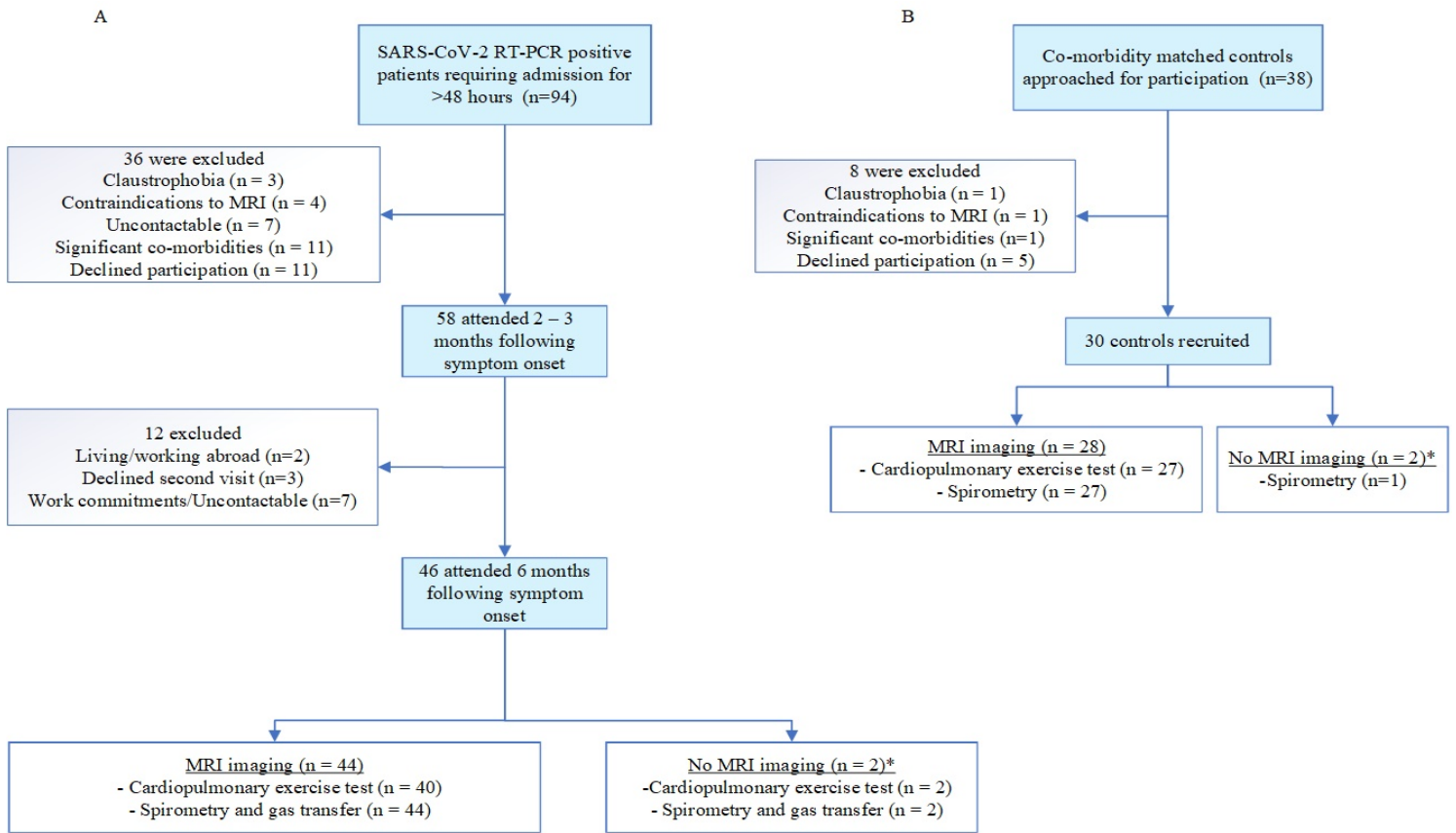
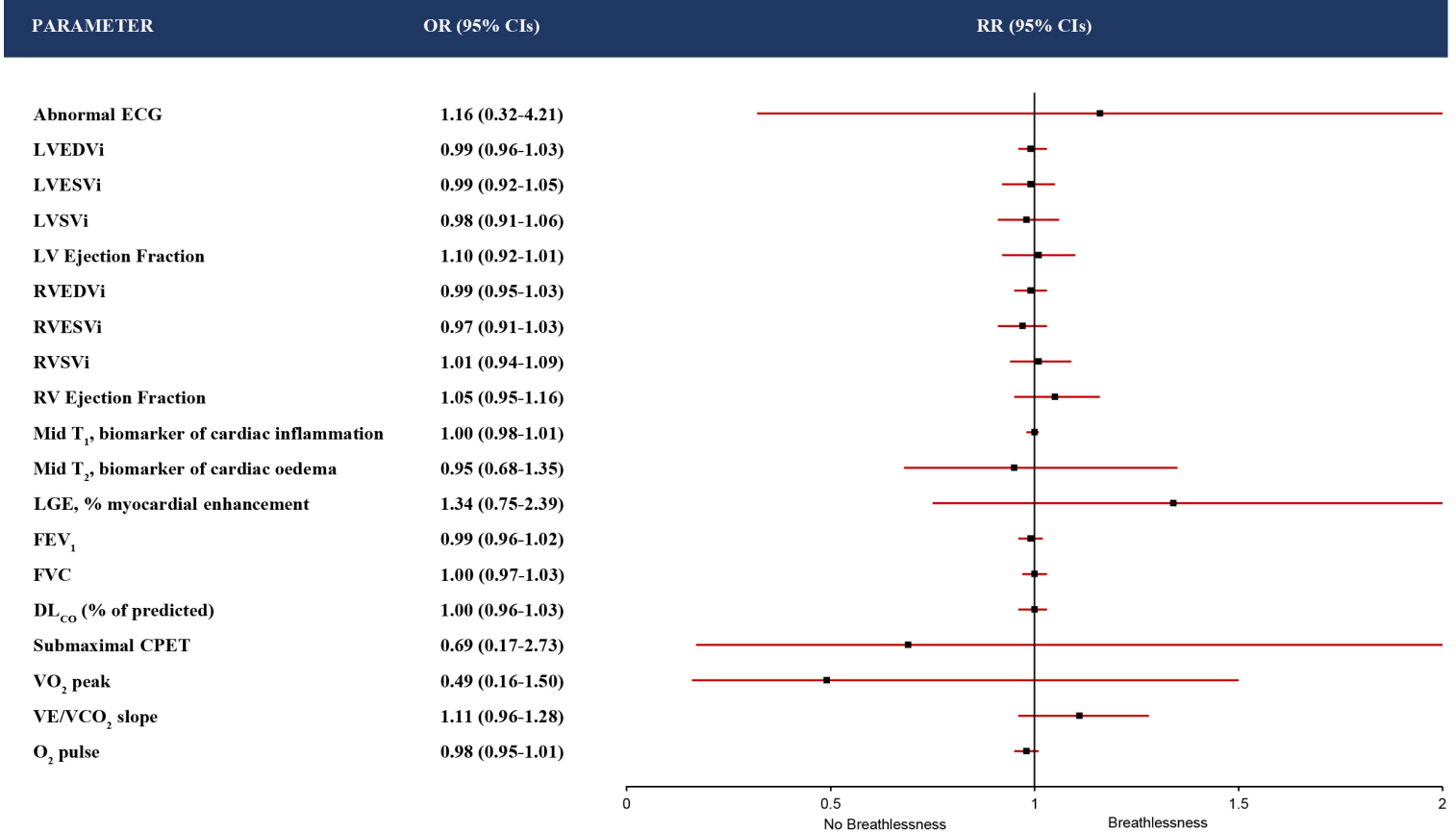


Figure 2. CMR/PFT/CPET determinants of shortness of breath (MRC dyspnoea scale >1).



Forest plot depicting outcome analysis (univariate binary logistic regression) with breathlessness (Medical Research Council dyspnoea scale >1) as the outcome variable, demonstrating that CMR, PFT and CPET parameters did not predict breathlessness in COVID-19 patients 6 months following disease onset. Abnormal ECG defined as rhythm abnormalities and/or presence of bundle branch block, ST elevation/depression or T wave inversion. CMR – Cardiac magnetic resonance. PFT – Pulmonary function test. CPET – Cardiopulmonary exercise test. OR - Odds ratio. CI - Confidence interval. ECG – Electrocardiogram. LVEDVi - Left ventricular end-diastolic volume (indexed). LVESVi - Left ventricular end-systolic volume (indexed). LVSVi - Left ventricular stroke volume (indexed). LV – Left ventricle. RVEDVi - Right ventricular end-diastolic volume (indexed). RVESVi - Right ventricular end-systolic volume (indexed). RVSVi - Right ventricular stroke volume (indexed). RV – Right ventricle. LGE - Late gadolinium enhancement. FEV₁ – Forced expiratory volume in the first second. FVC - Forced vital capacity. DL_{CO} - Diffusing capacity for carbon monoxide. pVO₂ - Peak oxygen consumption. VE/VCO₂ - Ventilatory equivalent for carbon dioxide. O₂ pulse - Oxygen pulse.)

References

1. World Health Organisation. Clinical management of COVID-19 Interim Guidance. 02/08/2020 Accessed on Aug 2, 2020. <https://www.who.int/publications/i/item/clinical-management-of-covid-19> (accessed 02/08/2020).
2. World Health Organisation. COVID-19 Therapeutic Trial Synopsis 02/08/2020 Accessed Aug 2, 2020. https://www.who.int/blueprint/priority-diseases/key-action/COVID-19_Treatment_Trial_Design_Master_Protocol_synopsis_Final_18022020.pdf (accessed 02/08/2020 2020).
3. Guan W-j, Ni Z-y, Hu Y, et al. Clinical characteristics of 2019 novel coronavirus infection in China. *MedRxiv* 2020.
4. Cai Q, Huang D, Yu H, et al. COVID-19: abnormal liver function tests. *Journal of hepatology* 2020.
5. Kroenke K, Spitzer RL, Williams JB. The PHQ-15: validity of a new measure for evaluating the severity of somatic symptoms. *Psychosom Med* 2002; **64**(2): 258-66.
6. Bestall J, Paul E, Garrod R, Garnham R, Jones P, Wedzicha J. Usefulness of the Medical Research Council (MRC) dyspnoea scale as a measure of disability in patients with chronic obstructive pulmonary disease. *Thorax* 1999; **54**(7): 581-6.
7. Krupp LB, LaRocca NG, Muir-Nash J, Steinberg AD. The fatigue severity scale: application to patients with multiple sclerosis and systemic lupus erythematosus. *Archives of neurology* 1989; **46**(10): 1121-3.
8. Piechnik SK, Ferreira VM, Dall'Armellina E, et al. Shortened modified look-locker inversion recovery (ShMOLLI) for clinical myocardial T1-mapping at 1.5 And 3 T within a 9 heartbeat breathhold. *J Cardiovasc Magn Reson* 2010; **12**.
9. Ferreira VM, Piechnik SK, Dall'Armellina E, et al. Non-contrast T1-mapping detects acute myocardial edema with high diagnostic accuracy: a comparison to T2-weighted cardiovascular magnetic resonance. *Journal of cardiovascular magnetic resonance* 2012; **14**(1): 42.
10. Schulz-Menger J, Bluemke DA, Bremerich J, et al. Standardized image interpretation and post processing in cardiovascular magnetic resonance: Society for Cardiovascular Magnetic Resonance (SCMR) board of trustees task force on standardized post processing. *J Cardiovasc Magn Reson* 2013; **15**: 35.
11. Dass S, Cochlin LE, Suttie JJ, et al. Exacerbation of cardiac energetic impairment during exercise in hypertrophic cardiomyopathy: a potential mechanism for diastolic dysfunction. *Eur Heart J* 2015; **36**(24): 1547-54.
12. Carapella V, Puchta H, Lukaschuk E, et al. Standardized image post-processing of cardiovascular magnetic resonance T1-mapping reduces variability and improves accuracy and consistency in myocardial tissue characterization. *International Journal of Cardiology* 2020; **298**: 128-34.
13. Karamitsos TD, Hudsmith LE, Selvanayagam JB, Neubauer S, Francis JM. Operator induced variability in left ventricular measurements with cardiovascular magnetic resonance is improved after training. *Journal of Cardiovascular Magnetic Resonance* 2007; **9**(5): 777-83.
14. Huang L, Zhao P, Tang D, et al. Cardiac Involvement in Patients Recovered From COVID-2019 Identified Using Magnetic Resonance Imaging. *JACC: Cardiovascular Imaging* 2020.
15. Vidalakis E, Kolentinis M, Gawor M, Vasquez M, Nagel E. CMR in Pericardial Diseases-an Update. *Current Cardiovascular Imaging Reports* 2020; **13**(4): 1-9.

16. Miller MR, Hankinson J, Brusasco V, et al. Standardisation of spirometry. *European respiratory journal* 2005; **26**(2): 319-38.
17. Graham BL, Brusasco V, Burgos F, et al. 2017 ERS/ATS standards for single-breath carbon monoxide uptake in the lung. *Eur Respir J* 2017; **49**(1).
18. Wasserman K. Principles of exercise testing and interpretation : including pathophysiology and clinical applications. 5th ed. Philadelphia: Wolters Kluwer Health/Lippincott Williams & Wilkins; 2012.
19. Jones NL. Clinical exercise testing. 3rd ed. Philadelphia: Saunders; 1988.