

Title

Lymphocyte count is a universal predictor to the health status and outcomes of patients with coronavirus disease 2019 (COVID-19): A systematic review and meta-regression analysis

Authors

Kuan-Lang Lai (conrad@cj.expert)^{1,2*}, Fu-Chang Hu (fuchang.hu@gmail.com)^{3,4}, Fang-Yu Wen (bagausagi@gms.tku.edu.tw)⁴, Ju-Ju Chen (jjchen092000@gmail.com)²

¹ Graduate Institute of Public Health, School of Public Health, National Defense Medical Center, Taipei, Taiwan

² CJ Consulting-Expert Co., Ltd., Taipei, Taiwan

³ Graduate Institute of Clinical Medicine and School of Nursing, College of Medicine, National Taiwan University, Taipei, Taiwan

⁴ Statistical Consulting Clinic, International-Harvard (I-H) Statistical Consulting Company, Taipei, Taiwan

Summary

Background This study aimed to evaluate the prediction capabilities of clinical laboratory biomarkers to the prognosis of COVID-19 patients.

Methods Observational studies reporting at least 30 cases of COVID-19 describing disease severity or mortality were included. Meta-data of demographics, clinical symptoms, vital signs, comorbidities, and 14 clinical laboratory biomarkers on initial hospital presentation were extracted. Taking the outcome group as the analysis unit, meta-regression analysis with the generalized estimating equations (GEE) method for clustered data was performed sequentially. The unadjusted effect of each potential predictor of the three binary outcome variables (i.e., severe vs. non-severe, critically severe vs. non-critically severe, and dead vs. alive) was examined one by one by fitting three series of simple GEE logistic regression models due to missing data. The worst one was dropped one at a time. Then, a final multiple GEE logistic regression model for each of the three outcome variables was obtained.

Findings Meta-data was extracted from 76 articles, reporting a total of 26,627 cases of COVID-19. Patients were recruited across 16 countries. The number of studies (patients) included in the final models of the analysis for severity, critical severity, and mortality was 38 studies (9,764 patients), 21 studies (4,792 patients), and 24 studies (14,825 patients), respectively. After adjusting for the effect of age, lymphocyte count mean or median ≤ 1.03 (estimated hazard ratio [HR] = 46.2594, $p < 0.0001$), smaller lymphocyte count mean or median ($HR < 0.0001$, $p = 0.0028$), and lymphocyte count mean or median ≤ 0.8714 ($HR = 17.3756$, $p =$

NOTE: This preprint reports new research that has not been certified by peer review and should not be used to guide clinical practice.

0.0079) were the strongest predictor of severity, critical severity, and mortality, respectively.

Interpretation *Lymphocyte count should be closely watched for COVID-19 patients in clinical practice.*

Keywords

Laboratory data, lymphocyte, logistic regression analysis, clustered data, GEE.

Introduction

Although numerous treatment options and vaccines are authorized for COVID-19,^{1,2} the situation of a global pandemic is still continuing. Each day over four hundred thousand new cases are identified even in time of July 2021.³ COVID-19, the illness caused by infection with SARS-nCoV2,⁴ is spreading since December 2019 from Wuhan, China, and has accumulated more than 192 million cases and more than 4 million deaths in over 219 countries, area or territories up to 23 July 2021.⁵ During pandemic period medical care system started to overwhelmed in bunch communities no matter from economically developed or underdeveloped regions.⁶⁻¹³ How to use simple tools to differentiate, triage patients is crucial.

Several laboratory data have been identified as predictors for disease severity or mortality of COVID-19 patients, e.g., lymphocyte count, neutrophil/lymphocyte ratio (NLR), lactate dehydrogenase (LDH), D-dimer, C-reactive protein (CRP), procalcitonin (PCT).¹⁴⁻²⁶ However, since many studies were conducted at the same region during a short period of time,^{14-22,26,27} potential bias of subject duplication cannot be ruled out for the following meta-analysis.²⁸⁻³⁴ Additionally the relative strength of broader spectrum lab data for their prediction capability has not been explored on a head-to-head basis. This study aimed to investigate whether laboratory data at hospital presentation play a role in distinguishing severity or predicting mortality for COVID-19 patients and to explore the relative significance of these predictors across regions.

.....

Research in context

Evidence before This Study

Plentiful tools, e.g., demographics, symptoms, vital signs, comorbidity, imaging, and lab data have been explored to their prediction capability for COVID-19 patients. Several lab data such as lymphocyte, NLR, LDH, CRP, PCT have been identified to distinguish the severity or to predict the survival of COVID-19 patients. However, most of the meta-analysis research conducted in a specific region at the early stage of the pandemics and subject duplication concerns cannot be ignored due to the large amount papers published within a short period. In addition, the relative strength of these lab items for predictions has not been tested under a broader spectrum which including severity, critical severity, and mortality and across different regions.

Added Value of This Study

Our study proves that several lab data (e.g., WBC count, lymphocyte count, neutrophil count, platelet count, LDH, D-dimer, CRP, and PCT) of COVID-19 patients at initial hospital presentation holds the values to differentiate disease severity (severe vs. non-severe, critically severe vs. non-critically severe) and to predict the final consequence, mortality (dead vs. alive). After comparisons lymphocyte count was the most powerful predictor among the fourteen explored lab data.

The implication of All Available Evidence

Early observing essential lab data for a COVID-19 patient can help to scan the health situation, triage the patient, aid for clinical judgment, predict the severity of disease, and from a pragmatic aspect to allocate medical resources appropriately. Under pandemic condition whereas medical resource is constrained, routine lab testing, which is relatively easy access, self-explanation, cost-effectiveness, could be a valuable tool to help for compacting disease. How to maintain or improve good immunity levels for the general population in daily life can be a crucial strategy to stakeholders in facing life-threatening infectious diseases such as COVID-19.

.....

Methods

Literature Search Strategy

We used the search terms “COVID-19”, “2019-nCoV”, and “coronavirus” in the search field “Title/Abstract”, at the electronic databases: MEDLINE, and EMBASE. The searches were completed on 10 October 2020.

Inclusion and Exclusion Criteria

The eligibility criteria for the inclusion of literature in the meta-analysis were as follows: (1) the literature is the original research; (2) the literature was a study with COVID-19 confirmed patients; (3) the literature was published in English with the full text available; (4) source of subjects, recruitment situation were clearly stated. Literature was excluded from the meta-analysis when (1) disease severity or survival status was not well defined; (2) pediatric study or particular subject group, e.g., specific disease apart from COVID-19; (3) desired lab data at hospital administration for COVID-19 was not available which fourteen lab items were: white blood cell (WBC), neutrophil, lymphocyte, neutrophil to lymphocyte ratio (NLR), platelet, alanine aminotransferase (ALT), aspartate aminotransferase (AST), creatinine, D-dimer, C-reactive protein (CRP), procalcitonin (PCT), lactate dehydrogenase (LDH), and

hypersensitive troponin I (hs-cTnI); (4) subjects number below thirty; (5) research subjects may duplicate from other studies after investigation of the sites and the recruitment period. Under condition (5), the study with utmost information by calculating (the number of study subjects) \times (number of lab data items) was selected.

At the initial stage, after duplicates were removed, 1,126 records were identified from MEDLINE or EMBASE databases. Of the leaving records, after the title and abstract review, 660 documents were excluded. The leaving 466 articles were carefully and detailed evaluated. At last, 390 articles were excluded, because the studies did not meet the criteria we have set. Finally, a total of 76 studies with 26,627 patients were included in qualitative synthesis (Figure 1). Among the 76 studies, based on the features of data, a total of 38 studies, 21 studies, and 24 studies were incorporated in the analysis for severity, critical severity, and mortality respectively. After all, a total of 35 studies, 15 studies, and 19 studies were presented in the meta-regression analyses, respectively.

Data Extraction

The following data were extracted from the qualified studies: first author, year/month of the publication, location (city-country), hospital name, definition of disease severity, subject number, number of COVID-19 patients in each health status, age, male to female ratio, vital sign, clinical feature (12 symptoms), comorbidity (any; 8 main diseases), and desired 14 lab data [Appendix I, Appendix II]. Lab data on the initial hospital presentation were classified as blood routine, blood biochemistry, coagulation functions, inflammatory markers, myocardial injury markers (see Appendix II).

The primary outcome measures were to compare the level of laboratory data and their impact on different health outcomes (non-severe vs. severe, non-critically severe vs. critically severe, and alive vs. dead) after adjusting the effects of other covariates.

Statistical Analysis

Statistical analysis was performed using the R 4.1.0 software (R Foundation for Statistical Computing, Vienna, Austria). Two-sided p value ≤ 0.05 was considered statistically significant. We chose the outcome groups in the collected studies as the analysis unit — instead of the collected studies themselves — in this meta-analytical study. The distributional properties of continuous variables were expressed by mean \pm standard deviation (SD), median, interquartile range (IQR), and categorical variables were presented by frequency and percentage (%). In univariate analysis, the unadjusted effect of each potential risk factor,

prognostic factor, or predictor of the three binary outcome variables (i.e., severe vs. non-severe, critically severe vs. non-critically severe, and dead vs. alive) was examined respectively using the Wilcoxon rank-sum test, Chi-square test, and Fisher's exact test as appropriate for the data type. Next, multivariate analysis was conducted by fitting the logistic regression models to estimate the adjusted effects of potential risk factors, prognostic factors, or predictors on the three binary outcome variables (i.e., severe vs. non-severe, critically severe vs. non-critically severe, and dead vs. alive) respectively with the generalized estimating equations (GEE) method. The GEE method was used to account for the correlation between the two outcome groups within a collected study.³⁵ Computationally, we used the `geeglm` function (with the specified "exchangeable" correlation structure and the default robust estimator of standard error) of the `geepack` package^{36,37} to fit GEE logistic regression models for the three sets of correlated binary responses (i.e., severe vs. non-severe, critically severe vs. non-critically severe, and dead vs. alive) respectively in R.

To ensure a good quality of analysis, the model-fitting techniques for (1) variable selection, (2) goodness-of-fit (GOF) assessment, and (3) regression diagnostics and remedies were used in our GEE logistic regression analyses. All the univariate significant and non-significant relevant covariates (listed in Appendix II) were put on the variable list to be selected. However, each of the collected studies selectively reported the potential risk factor, prognostic factor, or predictor of the three binary outcome variables. If we wanted to assess simultaneously the effects of all the relevant covariates (listed in Appendix II), then the number of studies without missing values would be very few. Thus, our meta-regression analysis was performed by fitting a series of simple GEE logistic regression models and then dropping the worst one at a time to maximally use all the available information. Then, a final multiple GEE logistic regression model for each of the three outcome variables was obtained. Any discrepancy between the results of univariate analysis and multivariate analysis was likely due to the variation in the number of studies without missing values or the confounding effects of uncontrolled covariates in univariate analysis.

The GOF measures, including the estimated area under the receiver operating characteristic (ROC) curve (also called the c statistic) and adjusted generalized R^2 , and the Hosmer-Lemeshow GOF test were examined to assess the GOF of the fitted GEE logistic regression model. The value of the c statistic ($0 \leq c \leq 1$) ≥ 0.7 suggests an acceptable level of discrimination power. Larger p values of the Hosmer-Lemeshow GOF test imply better fits of logistic regression model.

Simple and multiple generalized additive models (GAMs) were fitted to draw the GAM plots for detecting nonlinear effects of continuous covariates and then for identifying the appropriate cut-off point(s) to discretize continuous covariates, if necessary, during the above variable selection procedure. Computationally, we used the `vgam` function of the `VGAM` package with the default values of the smoothing parameters (e.g., `s(age, df=4, spar=0)` for the cubic smoothing splines) to fit the GAMs for our binary responses, and then used the `plotvgam` function of the same package to draw the GAM plots for visualizing the linear or nonlinear effects of continuous covariates in R.^{36,38,39} If a separation or high discrimination problem occurred in logistic regression analysis, we fitted the Firth's bias-reduced logistic regression model using the `logistf` function of the `logistf` package in R.⁴⁰ Finally, the statistical tools of regression diagnostics for residual analysis, detection of influential cases, and check of multicollinearity were applied to discover any model or data problems. The values of the variance inflating factor (VIF) ≥ 10 in continuous covariates or $VIF \geq 2.5$ in categorical covariates indicate the occurrence of the multicollinearity problem among some of the covariates in the fitted logistic regression model.

Results

Literature Search and Study Characteristics

Based on the search strategy, 76 articles were included in the qualitative synthesis^{10,14,16-25,41-104} including 26,627 COVID-19 confirmed patients (Figure 1, Appendix I). The number of studies (patients) included for the analysis of severity, critical severity, and mortality was 38 studies (9,764 patients), 21 studies (4,792 patients), and 24 studies (14,825 patients) respectively (Figure 1, Appendix I). Patient demographics, clinical features, comorbidities, lab items for each health status were shown (Appendix, Appendix II). All of the selected articles were published in 2020 with patient sizes ranged from 38 to 4,035 subjects. All of the articles were retrospective, observational studies with COVID-19 patients recruited between 1 December 2019 and 27 Jun 2020, from sixteen countries. The majority of studies were conducted in China (46 studies, 60.5%), followed by Italy (5 studies, 6.6%) and the US (5 studies, 6.6%). Most of the subjects come from China (13,483 patients, 50.6%), followed by Spain (4,035 patients, 15.2%) and US (2,691 patients, 10.1%). Except for 21 sole mortality studies, 55 studies incorporated disease severity definitions (Appendix I). Most (49, 89.1%) of the studies were based on the WHO interim guidance¹⁰⁵ or national guidance modified from the WHO principles^{91,106,107}, followed by the American Thoracic Society Guideline (5, 9.1%) and the International Guideline for Community-Acquired Pneumonia (1, 1.8%). Since the contents of the above guidelines were similar, they were all included in the analysis. In general, disease severity is classified into four types: mild, moderate, severe, and critically

severe. Severe: Meet any of the following (1) Shortness of breath, RR>30 times per minute; (2) At room air, SpO₂ lower than 93%; (3) The partial pressure of Arterial blood oxygen (PaO₂)/the fraction of inspired oxygen (FiO₂) \leq 300mmHg; (4) CT chest imaging shows that lung damage develops significantly within 24 to 48 hours. Critically severe: Meet any of the following (1) Respiratory failure requiring mechanical ventilation; (2) Signs of septic shock; (3) Multiple organ failure requiring ICU admission. For comparison purposes in this study, the subjects in the mild and the moderate conditions were assembled into the non-severe group; subjects in the mild, moderate, and severe were assembled into the non-critical group. There were therefore six health outcomes classified into three pairs in this study: severe vs. non-severe, critically severe vs. non-critically severe, dead vs. alive.

Patient Demographics, Clinical Characteristics, Comorbidities, and Lab Data

Summary statistics of the demographics, clinical characteristics, comorbidities, and laboratory data of the COVID-19 patients on initial hospital presentations for the assessment of severity, critical severity, and mortality were shown in Appendix II-1, Appendix II-2, and Appendix II-3, respectively.

Not every desired lab parameter was collected for each study — for example, NLR and hs-cTnI were rarely reported. Most of the lab data had statistical significance (all $p < 0.05$) between the two groups except less collected parameters to the disease severity (Appendix II-1, Appendix II-2); ALT, total bilirubin to the mortality (Appendix II-3).

Predictors for Severity (Severe vs. Non-severe)

Results of univariate analyses of the predictors for severity (severe vs. non-severe) were shown in Table 1-A. As less effect lab items judged by the AUC of ROC kicked out from the model, more and more arms, from $m = 14$ to $m = 70$ at the different runs, were recruited in the meta-regression analysis. At the final run (seventh, $m = 70$) only lymphocyte count (AUC = 0.938) or lymphocyte count ≤ 1.03 or > 2.06 (0.929) and age (AUC = 0.855) or age > 55.02 (AUC = 0.800) existed in the final univariate analyses. Table 1-B listed the result of multivariate analysis for the prediction of severity (severe vs. non-severe). Age mean or median > 55.02 presented a higher risk to the severity (estimated hazard ratio [HR] = 5.7921, $p = 0.0058$) while lymphocyte count mean or median ≤ 1.03 or > 2.06 showed a strong risk to the severity (HR = 46.2594, $p < 0.0001$).

Predictors for Critical Severity (Critically Severe vs. Non-critically severe)

Results of univariate analyses of the predictors for critical severity (critically severe vs. non-

critically severe) were shown in Table 2-A. At the last run (seventh, $m = 30$) only lymphocyte count (AUC = 0.933) and age (AUC = 0.829) or age > 59.82 (AUC = 0.767) were existed in the final univariate analyses. Table 2-B listed the result of multivariate analysis for the predictors to critical severity (critically severe vs. non-critically severe). Age and lymphocyte count were in the final meta-regression model. We found that higher lymphocyte count mean or median had an extremely lower risk of critical severity (HR < 0.0001, $p = 0.0284$) while age mean or median > 59.82 have a higher risk of critical severity (HR = 307.6130, $p = 0.0009$).

Predictors for Mortality (Dead vs. Alive)

Results of univariate analyses of the predictors for mortality (dead vs. alive) were shown in Table 3-A. At the last run (seventh, $m = 38$) only lymphocyte count (AUC = 0.935) or lymphocyte count ≤ 0.87 (AUC = 0.895) and age (AUC = 0.913) or age > 67.28 (AUC = 0.895) existed in the final univariate analyses. Table 3-B listed the result of multivariate analysis for the predictors of mortality. Older age mean or median > 67.28 have a higher risk of mortality (HR = 17.3756, $p = 0.0079$) while lower lymphocyte count mean or median ≤ 0.87 had a higher risk of mortality (HR = 17.3756, $p = 0.0079$).

Discussion

The results of this study provide numerous imperative insights. After comparisons lymphocyte count was the most powerful predictor among the fourteen explored lab items. Single lab data, lymphocyte count at initial hospital presentation together with age can be remarkable indicators to discriminate the health status (severe vs. non-severe, critically severe vs. non-critically severe) or the final consequence (dead vs. alive) for COVID-19 patients. Compared with vital signs, symptoms, comorbidities, several lab data (CRP, D-dimer, lymphocyte, neutrophil, platelet, LDH) holds the value to differentiate disease severity and to predict the mortality of COVID-19 patients. To the best of our knowledge, this was the first meta-analysis study that potential bias of subject duplication of COVID-19 patients in studies has been eliminated before analyses.

After SARS-CoV2 infection, multiple mechanisms of the human body triggered, e.g., immune (ex. WBC, lymphocyte, neutrophil) responses, inflammatory cataracts (ex. CRP, PCT), and the activation of coagulation cascades (ex. platelet count, D-dimer).¹⁰⁸⁻¹¹¹ After virus invasion to the tissues which starts early, the inflammation situation intensifies^{110,112}, the inflammatory indicators will increase dramatically.^{15,28,29,113,114} The wide distribution of the COVID-19 receptors, e.g., angiotensin-converting enzyme-2 (ACE2) receptors, abundantly expressed in a variety of cells residing in many human organs, could exaggerate systemic

failure due to direct organ injury.^{115,116} Organ (ex. lung, liver, kidney, heart, brain, etc.) damage indicators such as ALT, AST, total bilirubin, LDH, hypersensitive troponin I, etc. will be augmented to reflecting the impairment situation.^{30,117,118} Our study confirmed again that levels of several laboratory data although not all are profound predictors to disease severity or mortality for COVID-19 patients as compared with previous studies.^{15,28,29,30,114}

It is no surprise that lymphocyte count played such an important role to COVID-19 patients in defending SARS-CoV-2.^{28,109,112} Adaptive immune cells such as lymphocytes are essential for virus clearance as well as for recovery from the disease.^{109,112,119} Interaction between SARS-CoV-2 and the immune system of an individual results in a diverse clinical manifestation.^{16,75,88,94,96,112} Our study reveals that lymphocyte count offerings a defensive feature to COVID-19 patients within a certain range (Table 1-B, Table 3-B). Lower lever (e.g., lymphocyte count ≤ 1.03) or extreme lower (e.g., lymphocyte count ≤ 0.87) implies immune weakness and worsens outcomes to disease severity or mortality. However, a too high level of immune response becomes another issue, which may induce unintended results such as cytokine storm.^{75,88} In our study, a higher level of lymphocyte count (e.g., lymphocyte count > 2.06) revealed a more severe status to severity (Table 1-B). A current hypothesis is that a cytokine storm can induce or further aggravate SARS-CoV-2 infection.^{120,121} The degree to which SARS- CoV-2 targets immune cells remains poorly defined. It is crucial to understand more about the interaction of SARS- CoV-2 with the host immune system and the subsequent contribution to the organ functions and disease progression.

Plentiful tools, e.g., demographics, symptoms, vital signs, comorbidities, imaging, etc., have been explored to their prediction capability for COVID-19 patients.^{28,78,114} However, such data has its limitations. Routine lab data retains several advantages, which can indicate the whole body situation of a COVID-19 patient whose functions can be changed dramatically in few days.¹²² Additionally lab testing is easy to access, repeatable, self-explain, relatively cheap, and therefore can be a cost-effective tool under pandemic circumstances.

Current criteria to judge the severity, to triage or referral COVID-19 patients, are based on imaging, demographics, comorbidities, vital signs, or symptoms.^{6,123,124} Based on our study results single lab data, lymphocyte count at administration plus age can be useful for the purposes. Early and continue monitoring lab data for a COVID-19 patient can help to understand the health state, triage the patient, predict the severity of disease, predict the health consequences, and workout treatment judgment appropriately.

Our study has several limitations. Due to the lack of non-English articles, pediatric study and specific disease groups, interpretation of the results must be cautious. Ideally, all desired lab data should be collected and analyzed in all studies. However, it is not realistic in the real world because of wide-ranging medical resource deficiency that existed across countries. We suggest collecting essential data through a standardized list while clinical presentation, medical history, imaging information, comprehensive lab data, and other valuable factors, can be assembled and analyzed which will accelerate knowledge accumulation in particular under global pandemics. Retrospective observational study conducted at the level of hospital or community, characteristics of individual patients could not be retrieved. In addition, the dynamic relationship among various lab data, the status of disease progression, functions, and feelings of the patient, have not been explored due to inadequate data. More extensive and large-scale studies are required to double confirm the findings of this study.

Conclusion

Our study involved 26,627 confirmed COVID-19 patients across sixteen countries provides evidence for defending disease under pandemics. Results prove that lymphocyte count is a universal biomarker to disease severity and mortality across regions. Several routine lab data at the initial hospital presented good prediction capability. Routine lab testing could be a useful tool in particular under a pandemic condition whereas medical resource is constrained. How to maintain or improve good immunity levels for the general population in daily life can be a crucial strategy to stakeholders in facing life-threatening infectious diseases such as COVID-19.

Contributors

KLL and FCH designed the study and take responsibility for the integrity of the data and the accuracy of the data analysis. JJC and KLL were in charge of the systematic review and data collection. FCH and FYW conducted the statistical analysis. KLL and FGH contributed to the writing of the manuscript. All authors contributed to data interpretation, reviewed, and approved the final version.

Declaration of interests

All authors declared no competing interests.

Data sharing

The data of this study were available from the corresponding author on request.

Funding

None.

Acknowledgments

None.

Ethical statement

The study was a systematic review and meta-regression analysis so that ethical approval was not needed.

Supplementary material

Supplementary data to this article can be found online at <https://>.

References

1. Bartoli A, Gabrielli F, Alicandro T, Nascimbeni F, Andreone P. COVID-19 treatment options: a difficult journey between failed attempts and experimental drugs. *Intern Emerg Med* 2021;**16**(2):281-308. doi:10.1007/s11739-020-02569-9
2. CDC. Different COVID-19 Vaccines. Accessed April 26, 2021. <https://www.cdc.gov/coronavirus/2019-ncov/vaccines/different-vaccines.html>
3. WHO. Weekly epidemiological update on COVID-19-20 July 2021. Accessed July 23, 2021. <https://www.who.int/publications/m/item/weekly-epidemiological-update-on-covid-19---20-july-2021>
4. Hu B, Guo H, Zhou P, Shi ZL. Characteristics of SARS-CoV-2 and COVID-19. *Nat Rev Microbiol* 2021;**19**(3):141-154. doi:10.1038/s41579-020-00459-7
5. Johns Hopkins Coronavirus Resource Center. COVID-19 Map. Accessed July 23, 2021. <https://coronavirus.jhu.edu/map.html>
6. Chen S, Zhang Z, Yang J, et al. Fangcang shelter hospitals: a novel concept for responding to public health emergencies. *Lancet* 2020;**395**(10232):1305-1314. doi:10.1016/S0140-6736(20)30744-3
7. Remuzzi A, Remuzzi G. COVID-19 and Italy: what next? *Lancet* 2020;**395**(10231):1225-1228. doi:10.1016/S0140-6736(20)30627-9
8. Setiati S, Azwar MK. COVID-19 and Indonesia. *Acta Medica Indones* 2020;**52**(1):84-89. PMID: 32291377
9. Legido-Quigley H, Mateos-Garcia JT, Campos VR, Gea-Sanchez M, Muntaner C, McKee M. The resilience of the Spanish health system against the COVID-19

- pandemic. *Lancet* 2021;**5**(5):E251-E252. DOI:[https://doi.org/10.1016/S2468-2667\(20\)30060-8](https://doi.org/10.1016/S2468-2667(20)30060-8)
10. Ghweil AA, Hassan MH, Khodeary A, et al. Characteristics, outcomes and indicators of severity for covid-19 among sample of ESNA quarantine hospital's patients, Egypt: A retrospective study. *Infect Drug Resist* 2020;**13**:2375-2383. doi:10.2147/IDR.S263489
 11. Chen C, Zhao B. Makeshift hospitals for COVID-19 patients: where health-care workers and patients need sufficient ventilation for more protection. *J Hosp Infect* 2020;**105**(1):98-99. doi:10.1016/j.jhin.2020.03.008
 12. Ammar A, Stock A, Holland R, Gelfand Y, Altschul D. Managing a specialty service during the COVID-19 crisis: lessons from a New York City health system. *ncbi.nlm.nih.gov. Acad Med* 2021;**95**(10):1495-1498. doi:10.1097/ACM.0000000000003440.
 13. Paintsil E. COVID-19 threatens health systems in sub-Saharan Africa: The eye of the crocodile. *J Clin Invest* 2020;**130**(6):2741-2744. doi:10.1172/JCI138493
 14. Zhang W, Li L, Liu J, et al. The characteristics and predictive role of lymphocyte subsets in COVID-19 patients. *Int J Infect Dis* 2020;**99**:92-99. doi:10.1016/j.ijid.2020.06.079
 15. Xu J bo, Xu C, Zhang R bing, et al. Associations of procalcitonin, C-reaction protein and neutrophil-to-lymphocyte ratio with mortality in hospitalized COVID-19 patients in China. *Sci Rep* 2020;**10**(1):1-10. doi:10.1038/s41598-020-72164-7
 16. Qun S, Wang Y, Chen J, et al. Neutrophil-to-Lymphocyte Ratios Are Closely Associated With the Severity and Course of Non-mild COVID-19. *Front Immunol* 2020;**11**:2160. doi:10.3389/fimmu.2020.02160
 17. Huang H, Song B, Xu Z, et al. Predictors of coronavirus disease 2019 severity: A retrospective study of 64 cases. *Jpn J Infect Dis* 2021;**74**(1):54-60. doi:10.7883/yoken.JJID.2020.298
 18. Chen L, Yu J, He W, et al. Risk factors for death in 1859 subjects with COVID-19. *Leukemia* 2020;**34**:2173–2183. <https://doi.org/10.1038/s41375-020-0911-0>
 19. Sun H, Ning R, Tao Y, et al. Risk Factors for Mortality in 244 Older Adults With COVID-19 in Wuhan, China: A Retrospective Study. *J Am Geriatr Soc* 2020;**68**(6):E19-E23. doi:10.1111/jgs.16533
 20. Zheng Y, Zhang Y, Chi H, Chen S, Peng M, Luo L, Chen L, Li J, Shen B, Wang D. The hemocyte counts as a potential biomarker for predicting disease progression in COVID-19: A retrospective study. *Clin Chem Lab Med* 2020;**58**(7):1106-1115. doi:10.1515/cclm-2020-0377

21. Shu Z, Zhou Y, Chang K, et al. Clinical features and the traditional Chinese medicine therapeutic characteristics of 293 COVID-19 inpatient cases. *Front Med* 2020;**14**(6):760-775. doi:10.1007/s11684-020-0803-8
22. Zhang SY, Lian JS, Hu JH, et al. Clinical characteristics of different subtypes and risk factors for the severity of illness in patients with COVID-19 in Zhejiang, China. *Infect Dis Poverty* 2020;**9**(1):85. doi:10.1186/s40249-020-00710-6
23. Ciceri F, Castagna A, Rovere-Querini P, De Cobelli F, Ruggeri A, Galli L, Conte C, De Lorenzo R, Poli A, Ambrosio A, Signorelli C, Bossi E, Fazio M, Tresoldi C, Colombo S, Monti G, Fominskiy E, Franchini S, Spessot M, Martinenghi C, Carlucci M, Beretta L, Scandroglio AM, Clementi M, Locatelli M, Tresoldi M, Scarpellini P, Martino G, Bosi E, Dagna L, Lazzarin A, Landoni G, Zangrillo A. Early predictors of clinical outcomes of COVID-19 outbreak in Milan, Italy. *Clin Immunol* 2020;**217**:108509. doi: 10.1016/j.clim.2020.108509.
24. Bahl A, Van Baalen MN, Ortiz L, et al. Early predictors of in-hospital mortality in patients with COVID-19 in a large American cohort. *Intern Emerg Med* 2020;**15**(8):1485-1499. doi:10.1007/s11739-020-02509-7
25. Bonetti G, Manelli F, Patroni A, et al. Laboratory predictors of death from coronavirus disease 2019 (COVID-19) in the area of Valcamonica, Italy. *Clin Chem Lab Med* 2020;**58**(7):1100-1105. doi:10.1515/cclm-2020-0459
26. Liu J, Liu Y, Xiang P, et al. Neutrophil-to-lymphocyte ratio predicts critical illness patients with 2019 coronavirus disease in the early stage. *J Transl Med* 2020;**18**:206. doi:10.1186/s12967-020-02374-0
27. Nanshan Chen, Min Zhou, Xuan Dong, et. al. Epidemiological and clinical characteristics of 99 cases of 2019 novel coronavirus pneumonia in Wuhan, China: a descriptive study. *Lancet* 2020;**395**:507-513. [https://doi.org/10.1016/S0140-6736\(20\)30211-7](https://doi.org/10.1016/S0140-6736(20)30211-7).
28. Rodriguez-Morales AJ, Cardona-Ospina JA, Gutiérrez-Ocampo E, et al. Clinical, laboratory and imaging features of COVID-19: A systematic review and meta-analysis. *Travel Med Infect Dis* 2020;**34**:101623. doi:10.1016/j.tmaid.2020.101623
29. Zeng F, Huang Y, Guo Y, et al. Association of inflammatory markers with the severity of COVID-19: A meta-analysis. *Int J Infect Dis* 2020;**96**:467-474. doi:10.1016/j.ijid.2020.05.055
30. Kermali M, Khalsa RK, Pillai K, Ismail Z, Harky A. The role of biomarkers in diagnosis of COVID-19 – A systematic review. *Life Sci* 2020;**254**:117788. doi:10.1016/j.lfs.2020.117788
31. Alnor A, Sandberg MB, Gils C, Vinholt PJ. Laboratory Tests and Outcome for Patients

- with Coronavirus Disease 2019: A Systematic Review and Meta-Analysis. *J Appl Lab Med*. 2020 Sep 1;5(5):1038-1049. doi: 10.1093/jalm/jfaa098.
32. Pormohammad A, Ghorbani S, Baradaran B, Khatami A, J Turner R, Mansournia MA, Kyriacou DN, Idrovo JP, Bahr NC. Clinical characteristics, laboratory findings, radiographic signs and outcomes of 61,742 patients with confirmed COVID-19 infection: A systematic review and meta-analysis. *Microb Pathog*. 2020 Oct;147:104390. doi: 10.1016/j.micpath.2020.104390.
 33. Deng X, Liu B, Li J, Zhang J, Zhao Y, Xu K. Blood biochemical characteristics of patients with coronavirus disease 2019 (COVID-19): a systemic review and meta-analysis. *Clin Chem Lab Med*. 2020 Jul 28;58(8):1172-1181. doi: 10.1515/cclm-2020-0338.
 34. Patel U, Malik P, Usman MS, Mehta D, Sharma A, Malik FA, Khan N, Siddiqi TJ, Ahmed J, Patel A, Sacks H. Age-Adjusted Risk Factors Associated with Mortality and Mechanical Ventilation Utilization Amongst COVID-19 Hospitalizations-a Systematic Review and Meta-Analysis. *SN Compr Clin Med* 2020;1-10. doi: 10.1007/s42399-020-00476-w.
 35. Liang KY, Zeger SL. Longitudinal data analysis using generalized linear models. *Biometrika* 1986;73(1):13-22. doi:10.1093/biomet/73.1.13
 36. Yee TW. *Vector Generalized Linear and Additive Models: With an Implementation in R*. Springer Science and Business Media, LLC; 2015. doi:10.1007/978-1-4939-2818-7
 37. Halekoh U, Højsgaard S, Yan J. The R package geepack for generalized estimating equations. *J Stat Softw* 2006;15(2):1-11. doi:10.18637/jss.v015.i02
 38. Package “VGAM.” Published online 2021. doi:10.1007/978-1-4939-2818-7
 39. Yee TW, Wild CJ. Vector Generalized Additive Models. *J R Stat Soc Ser B* 1996;58(3):481-493. doi:10.1111/j.2517-6161.1996.tb02095.x
 40. Heinze, G., Ploner, M., Dunkler, D., Southworth, H., and Jiricka, L. 2020. logistf: Firth’s bias-reduced logistic regression. R package, version 1.24 (URL: <https://CRAN.R-project.org/package=logistf>). - Google Search. Accessed May 8, 2021.
 41. Almazeedi S, Al-Youha S, Jamal M, et al. Characteristics, risk factors and outcomes among the first consecutive 1096 patients diagnosed with COVID-19 in Kuwait. *EClinicalMedicine* 2020;24:100448. DOI:<https://doi.org/10.1016/j.eclinm.2020.100448>
 42. Berenguer J, Ryan P, Rodríguez-Baño J, et al. Characteristics and predictors of death among 4035 consecutively hospitalized patients with COVID-19 in Spain. *Clin Microbiol Infect* 2020;26(11):1525-1536. doi: 10.1016/j.cmi.2020.07.024.

43. Botero DMR, Omar AMS, Sun HK, et al. Covid-19 in the healthy patient population demographic and clinical phenotypic characterization and predictors of in-hospital outcomes. *Arterioscler Thromb Vasc Biol* 2020;**40**(11):2764-2775. doi:10.1161/ATVBAHA.120.314845
44. Brill SE, Jarvis HC, Ozcan E, et al. COVID-19: A retrospective cohort study with focus on the over-80s and hospital-onset disease. *BMC Med* 2020;**18**(1). doi:10.1186/s12916-020-01665-z
45. Cai Q, Huang D, Ou P, et al. COVID-19 in a designated infectious diseases hospital outside Hubei Province, China. *Allergy Eur J Allergy Clin Immunol* 2020;**75**(7):1742-1752. doi:10.1111/all.14309
46. Chen T, Wu D, Chen H, et al. Clinical characteristics of 113 deceased patients with coronavirus disease 2019: retrospective study. *BMJ* 2020;**368**:m1091. doi: 10.1136/bmj.m1091
47. Cipriani A, Capone F, Donato F, et al. Cardiac injury and mortality in patients with Coronavirus disease 2019 (COVID-19): insights from a mediation analysis. *Intern Emerg Med* 2021;**16**(2):419-427. doi:10.1007/s11739-020-02495-w
48. Fan BE, Chong VCL, Chan SSW, et al. Hematologic parameters in patients with COVID-19 infection. *Am J Hematol* 2020;**95**(6):E131-E134. doi:10.1002/ajh.25774
49. Ferguson J, Rosser J, Quintero O, et al. Characteristics and outcomes of coronavirus disease patients under nonsurge conditions, Northern California, USA, March–April 2020. *Emerg Infect Dis* 2020;**26**(8):1679-1685. doi: 10.3201/eid2608.201776
50. Gao Y, Li T, Han M, et al. Diagnostic utility of clinical laboratory data determinations for patients with the severe COVID-19. *J Med Virol* 2020;**92**(7):791-796. doi:10.1002/jmv.25770
51. Gayam VR, Ditah C, Lamichhane S. Clinical characteristics and predictors of mortality in African-Americans with COVID-19 from an inner-city community teaching hospital in New York. *Artic J Med Virol* 2020;**93**(2):812-819. doi:10.1002/jmv.26306
52. Giacomelli A, Ridolfo A, Milazzo L, et al. 30-day mortality in patients hospitalized with COVID-19 during the first wave of the Italian epidemic: a prospective cohort study. *Pharmacol Res* 2020;**158**:104931. doi: 10.1016/j.phrs.2020.104931
53. He L, Zhang Q, Li Z, et al. Incorporation of urinary neutrophil gelatinase-Associated lipocalin and computed tomography quantification to predict acute kidney injury and in-hospital death in COVID-19 patients. *Kidney Dis* 2021;**7**:120-130. <https://doi.org/10.1159/000511403>
54. Hong K, Lee K, Chung J, et al. Clinical features and outcomes of 98 patients

- hospitalized with SARS-CoV-2 infection in Daegu, South Korea: a brief descriptive study. *Yonsei Med J* 2020;**61**(5):431-437. doi: 10.3349/ymj.2020.61.5.431
55. Huang C, Wang Y, Li X, et al. Clinical features of patients infected with 2019 novel coronavirus in Wuhan, China. *Lancet* 2020;**395**(10223):497-506.
DOI:[https://doi.org/10.1016/S0140-6736\(20\)30183-5](https://doi.org/10.1016/S0140-6736(20)30183-5)
56. Israelsen S, Kristiansen K, Hindsberger B, et al. Characteristics of Patients with COVID-19 Pneumonia at Hvidovre Hospital, March-April 2020. *Dan Med J* 2020;**67**(6):A05200313. PMID: 32448405.
57. Javanian M, Bayani M, Shokri M, et al. Clinical and laboratory findings from patients with COVID-19 pneumonia in Babol North of Iran: a retrospective cohort study. *Rom J Intern Med* 2020;**58**(3):161-167. doi: 10.2478/rjim-2020-0013.
58. Jiang H, Guo W, Shi Z, et al. Clinical imaging characteristics of inpatients with coronavirus disease-2019 in Heilongjiang Province, China: a retrospective study. *Aging (Albany NY)* 2020;**12**(14):13860-13868. doi: 10.18632/aging.103633
59. Khalil K, Agbontaen K, McNally D, et al. Clinical characteristics and 28-day mortality of medical patients admitted with COVID-19 to a central London teaching hospital. *J Infect* 2020;**81**(3):e85-e89. doi:10.1016/j.jinf.2020.06.027
60. Khamis F, Al-Zakwani I, Al Naamani H, et al.. Clinical characteristics and outcomes of the first 63 adult patients hospitalized with COVID-19: an experience from Oman. *J Infect Public Health* 2020;**13**(7):906-913. doi: 10.1016/j.jiph.2020.06.002
61. Lee JY, Kim HA, Huh K, Hyun M, Rhee JY, Jang S, Kim JY, Peck KR, Chang HH. Risk factors for mortality and respiratory support in elderly patients hospitalized with COVID-19 in Korea. *J Korean Med Sci* 2020;**35**(23):e223.
<https://doi.org/10.3346/jkms.2020.35.e223>.
62. Lee JY, Hong SW, Hyun M, Park JS, Lee JH, Suh YS, Kim DH, Han SW, Cho CH, Kim HA. Epidemiological and clinical characteristics of coronavirus disease 2019 in Daegu, South Korea. *Int J Infectious Disease* 2020;**98**:462-466.
<https://doi.org/10.1016/j.ijid.2020.07.017>
63. Lendorf ME, Boisen MK, Kristensen PL, et al. Characteristics and early outcomes of patients hospitalised for COVID-19 in North Zealand, Denmark. *Dan Med J* 2020;**67**(9):A06200428. PMID: 32800073.
64. Li H, Xiang X, Ren H, et al. Serum Amyloid A is a biomarker of severe Coronavirus Disease and poor prognosis. *J Infect* 2020;**80**(6):646-655.
doi:10.1016/j.jinf.2020.03.035
65. Li K, Wu J, Wu F, et al. The Clinical and Chest CT Features Associated with Severe and Critical COVID-19 Pneumonia. *Invest Radiol* 2020;**55**(6):327-331.

- doi:10.1097/RLI.0000000000000672
66. Li T, Lu L, Zhang W, et al. Clinical characteristics of 312 hospitalized older patients with COVID-19 in Wuhan, China. *Arch Gerontol Geriatr* 2020;**91**:104185. doi:10.1016/j.archger.2020.104185
 67. Li X, Liu Y, Li J, et al. Immune characteristics distinguish patients with severe disease associated with SARS-CoV-2. *Immunol Res* 2020;**68**(6):398-404. doi:10.1007/s12026-020-09156-2
 68. Liu J, Zhang S, Wu Z, et al. Clinical outcomes of COVID-19 in Wuhan, China: a large cohort study. *Ann Intensive Care* 2020;**10**(1):1-21. doi:10.1186/S13613-020-00706-3
 69. Liu S, Luo H, Wang Y, et al. Clinical characteristics and risk factors of patients with severe COVID-19 in Jiangsu province, China: A retrospective multicentre cohort study. *BMC Infect Dis* 2020;**20**(1):584. doi:10.1186/s12879-020-05314-x
 70. Lv Z, Cheng S, Le J, et al. Clinical characteristics and co-infections of 354 hospitalized patients with COVID-19 in Wuhan, China: a retrospective cohort study. *Microbes Infect* 2020;**22**(4-5):195-199. doi:10.1016/j.micinf.2020.05.007
 71. Mao L, Jin H, Wang M, et al. Neurologic Manifestations of Hospitalized Patients with Coronavirus Disease 2019 in Wuhan, China. *JAMA Neurol* 2020;**77**(6):683-690. doi:10.1001/jamaneurol.2020.1127
 72. Ortiz-Brizuela E, Villanueva-Reza M, González-Lara MF, et al. Clinical and epidemiological characteristics of patients diagnosed with COVID-19 in a tertiary care center in Mexico City: a prospective cohort study. *Rev Invest Clin* 2020;**72**(3):165-177. doi:10.24875/RIC.20000211
 73. Qian GQ, Yang NB, Ding F, et al. Epidemiologic and clinical characteristics of 91 hospitalized patients with COVID-19 in Zhejiang, China: A retrospective, multi-centre case series. *QJM* 2020;**113**(7):474-481. doi:10.1093/qjmed/hcaa089
 74. Romero-Sánchez CM, Díaz-Maroto I, Fernández-Díaz E, et al. Neurologic manifestations in hospitalized patients with COVID-19: The ALBACOVID registry. *Neurology* 2020;**95**(8):e1060-e1070. doi:10.1212/WNL.0000000000009937
 75. Satış H, Özger HS, Aysert Yıldız P, et al. Prognostic value of interleukin-18 and its association with other inflammatory markers and disease severity in COVID-19. *Cytokine* 2021;**137**:155302. doi:10.1016/j.cyto.2020.155302
 76. Shahriarirad R, Shahriarirad R, Khodamoradi Z, et al. Epidemiological and clinical features of 2019 novel coronavirus diseases (COVID-19) in the South of Iran. *BMC Infect Dis* 2020;**20**(1):427. doi:10.1186/s12879-020-05128-x
 77. Shang W, Dong J, Ren Y, et al. The value of clinical parameters in predicting the severity of COVID-19. *J Med Virol* 2020;**92**(10):2188-2192. doi:10.1002/jmv.26031

78. Sun D, Li X, Guo D, et al. CT Quantitative Analysis and Its Relationship with Clinical Features for Assessing the Severity of Patients with COVID-19. *Korean J Radiol* 2020;**21**(7):859-868. doi:10.3348/kjr.2020.0293
79. Sun S, Cai X, Wang H, et al. Abnormalities of peripheral blood system in patients with COVID-19 in Wenzhou, China. *Clin Chim Acta* 2020;**507**:174-180. doi:10.1016/j.cca.2020.04.024
80. Sun Y, Dong Y, Wang L, et al. Characteristics and prognostic factors of disease severity in patients with COVID-19: The Beijing experience. *J Autoimmun* 2020;**112**:102473. doi:10.1016/j.jaut.2020.102473
81. Taghiloo S, Aliyali M, Abedi S, et al. Apoptosis and immunophenotyping of peripheral blood lymphocytes in Iranian COVID-19 patients: Clinical and laboratory characteristics. *J Med Virol* 2021;**93**(3):1589-1598. doi:10.1002/jmv.26505
82. Tao Z, Xu J, Chen W, et al. Anemia is associated with severe illness in COVID-19: A retrospective cohort study. *J Med Virol* 2021;**93**(3):1478-1488. doi:10.1002/jmv.26444
83. Uchida Y, Uemura H, Yamaba S, et al. Significance of liver dysfunction associated with decreased hepatic CT attenuation values in Japanese patients with severe COVID-19. *J Gastroenterol* 2020;**55**(11):1098-1106. doi:10.1007/s00535-020-01717-4
84. Vena A, Giacobbe DR, Di Biagio A, et al. Clinical characteristics, management and in-hospital mortality of patients with coronavirus disease 2019 in Genoa, Italy. *Clin Microbiol Infect* 2020;**26**(11):1537-1544. doi:10.1016/j.cmi.2020.07.049
85. Wang C, Deng R, Gou L, et al. Preliminary study to identify severe from moderate cases of COVID-19 using combined hematology parameters. *Ann Transl Med* 2020;**8**(9):593-593. doi:10.21037/atm-20-3391
86. Wang D, Li R, Wang J, et al. Correlation analysis between disease severity and clinical and biochemical characteristics of 143 cases of COVID-19 in Wuhan, China: A descriptive study. *BMC Infect Dis* 2020;**20**(1):519. doi:10.1186/s12879-020-05242-w
87. Wang D, Hu B, Hu C, et al. Clinical Characteristics of 138 Hospitalized Patients with 2019 Novel Coronavirus-Infected Pneumonia in Wuhan, China. *JAMA* 2020;**323**(11):1061-1069. doi:10.1001/jama.2020.1585
88. Wang F, Hou H, Luo Y, et al. The laboratory tests and host immunity of COVID-19 patients with different severity of illness. *JCI Insight* 2020;**5**(10). doi:10.1172/JCI.INSIGHT.137799
89. Wang R, Pan M, Zhang X, et al. Epidemiological and clinical features of 125 Hospitalized Patients with COVID-19 in Fuyang, Anhui, China. *Int J Infect Dis* 2020;**95**:421-428. doi:10.1016/j.ijid.2020.03.070
90. Wang R, He M, Yin W, et al. The Prognostic Nutritional Index is associated with

- mortality of COVID-19 patients in Wuhan, China. *J Clin Lab Anal* 2020;**34**(10):e23566. doi:10.1002/jcla.23566
91. Wu J, Li W, Shi X, et al. Early antiviral treatment contributes to alleviate the severity and improve the prognosis of patients with novel coronavirus disease (COVID-19). *J Intern Med* 2020;**288**(1):128-138. doi:10.1111/joim.13063
 92. Yan X, Han X, Peng D, et al. Clinical Characteristics and Prognosis of 218 Patients With COVID-19: A Retrospective Study Based on Clinical Classification. *Front Med* 2020;**7**:485. doi:10.3389/fmed.2020.00485
 93. Yang L, Liu J, Zhang R, et al. Epidemiological and clinical features of 200 hospitalized patients with corona virus disease 2019 outside Wuhan, China: A descriptive study. *J Clin Virol* 2020;**129**:104475. doi:10.1016/j.jcv.2020.104475
 94. Yang M, Chen X, Xu Y. A retrospective study of the C-Reactive protein to lymphocyte ratio and disease severity in 108 patients with early COVID-19 Pneumonia from January to March 2020 in Wuhan, China. *Med Sci Monit* 2020;**26**:e926393-1. doi:10.12659/MSM.926393
 95. Yao Q, Wang P, Wang X, et al. A retrospective study of risk factors for severe acute respiratory syndrome coronavirus 2 infections in hospitalized adult patients. *Polish Arch Intern Med* 2020;**130**(5):390-399. doi:10.20452/pamw.15312
 96. Ye W, Chen G, Li X, et al. Dynamic changes of D-dimer and neutrophil-lymphocyte count ratio as prognostic biomarkers in COVID-19. *Respir Res* 2020;**21**(1):169. doi:10.1186/s12931-020-01428-7
 97. Yu C, Lei Q, Li W, Wang X, Li W, Liu W. Epidemiological and clinical characteristics of 1663 hospitalized patients infected with COVID-19 in Wuhan, China: a single-center experience. *J Infect Public Health* 2020;**13**(9):1202-1209. doi:10.1016/j.jiph.2020.07.002
 98. Zerah L, Baudouin É, Pépin M, et al. Clinical Characteristics and Outcomes of 821 Older Patients With SARS-Cov-2 Infection Admitted to Acute Care Geriatric Wards. *J Gerontol A Biol Sci Med Sci* 2021;**76**(3):e4-e12. doi:10.1093/gerona/glaa210
 99. Zhang C, Qin L, Li K, et al. A Novel Scoring System for Prediction of Disease Severity in COVID-19. *Front Cell Infect Microbiol* 2020;**10**:318. doi:10.3389/fcimb.2020.00318
 100. Zhang JJ, Dong X, Cao YY, Yuan YD, Yang YB, Yan YQ, Akdis CA, Gao YD. Clinical characteristics of 140 patients infected with SARS-CoV-2 in Wuhan, China. *Allergy Eur J Allergy Clin Immunol*. 2020;**75**(7):1730-1741. doi:10.1111/all.14238
 101. Zhang JJ, Cao YY, Tan G, Dong X, Wang BC, Lin J, Yan YQ, Liu GH, Akdis M, Akdis CA, Gao TD. Clinical, radiological, and laboratory characteristics and risk factors for

- severity and mortality of 289 hospitalized COVID-19 patients. *Allergy Eur J Allergy Clin Immunol* 2021;**76**(2):533-550. doi:10.1111/all.14496
102. Zhao Z, Chen A, Hou W, et al. Prediction model and risk scores of ICU admission and mortality in COVID-19. Adrish M, ed. *PLoS One* 2020;**15**(7):e0236618. doi:10.1371/journal.pone.0236618
 103. Zheng F, Tang W, Li H, Huang YX, Xie YL, Zhou ZG. Clinical characteristics of 161 cases of corona virus disease 2019 (COVID-19) in Changsha. *Eur Rev Med Pharmacol Sci* 2020;**24**(6):3404-3410. doi:10.26355/eurrev_202003_20711
 104. Zheng Y, Xu H, Yang M, et al. Epidemiological characteristics and clinical features of 32 critical and 67 noncritical cases of COVID-19 in Chengdu. *J Clin Virol* 2020;**127**:104366. doi:10.1016/j.jcv.2020.104366
 105. Clinical care of severe acute respiratory infections – Tool kit. Accessed April 25, 2021. <https://www.who.int/publications/i/item/clinical-care-of-severe-acute-respiratory-infections-tool-kit>
 106. Li L, Huang T, Wang Y, et al. COVID-19 patients' clinical characteristics, discharge rate, and fatality rate of meta-analysis. *J Med Virol* 2020;**92**(6):577-583. doi:10.1002/jmv.25757
 107. Chen N, Zhou M, Dong X, et al. Epidemiological and clinical characteristics of 99 cases of 2019 novel coronavirus pneumonia in Wuhan, China: a descriptive study. *Lancet* 2020;**395**(10223):507-513. doi:10.1016/S0140-6736(20)30211-7
 108. Peiris JSM, Chu CM, Cheng VCC, et al. Clinical progression and viral load in a community outbreak of coronavirus-associated SARS pneumonia: A prospective study. *Lancet*. 2003;**361**(9371):1767-1772. doi:10.1016/S0140-6736(03)13412-5
 109. Younas M, Psomas C, Reynes J, Corbeau P. Immune activation in the course of HIV-1 infection: Causes, phenotypes and persistence under therapy. *Wiley Online Libr* 2015;**17**(2):89-105. doi:10.1111/hiv.12310
 110. McGonagle D, Sharif K, O'Regan A, Bridgewood C. The Role of Cytokines including Interleukin-6 in COVID-19 induced Pneumonia and Macrophage Activation Syndrome-Like Disease. *Autoimmun Rev*. 2020;**19**(6). doi:10.1016/j.autrev.2020.102537
 111. Liu J, Zhang S, Wu Z, et al. Clinical outcomes of COVID-19 in Wuhan, China: a large cohort study. *Ann Intensive Care* 2020;**10**(1):99. doi:10.1186/s13613-020-00706-3
 112. Liu J, Li S, Liu J, et al. Longitudinal characteristics of lymphocyte responses and cytokine profiles in the peripheral blood of SARS-CoV-2 infected patients. *EBioMedicine*. 2020;**55**:102763. doi:10.1016/j.ebiom.2020.102763.
 113. Wu C, Chen X, Cai Y, et al. Risk Factors Associated With Acute Respiratory Distress

- Syndrome and Death in Patients With Coronavirus Disease 2019 Pneumonia in Wuhan, China. *JAMA Intern Med* 2020;**180**(7):934–943.
doi:10.1001/jamainternmed.2020.0994
114. Lu H, Ai J, Shen Y, et al. Title: A descriptive study of the impact of diseases control and prevention on the epidemics 1 dynamics and clinical features of SARS-CoV-2 outbreak in Shanghai, lessons learned for 2 metropolis epidemics prevention. *medrxiv.org*. 2020. doi:10.1101/2020.02.19.20025031
 115. Tai W, He L, Zhang X, Pu J, Voronin D, Jiang S, Zhou Y, Du L. Characterization of the receptor-binding domain (RBD) of 2019 novel coronavirus: implication for development of RBD protein as a viral attachment inhibitor. *Cell Mol Immunol* 2020;**17**:613-620. <https://doi.org/10.1038/s41423-020-0400-4>
 116. Li S, Tang Z, Li Z, Liu X. Searching therapeutic strategy of new coronavirus pneumonia from angiotensin-converting enzyme 2: the target of COVID-19 and SARS-CoV. *Eur J Clin Microbiol Infect Dis* 2020;**39**(6):1021-1026.
doi:10.1007/s10096-020-03883-y
 117. Papageorgiou N, Sohrabi C, Prieto Merino D, et al. High sensitivity troponin and COVID-19 outcomes. *Acta Cardiol* 2021. doi:10.1080/00015385.2021.1887586
 118. Paliogiannis P, Zinellu A. Bilirubin levels in patients with mild and severe Covid-19: A pooled analysis. *Liver Int* 2020;**40**(7):1787-1788. doi:10.1111/liv.14477
 119. Hui DSC, Chan MCH, Wu AK, Ng PC. Severe acute respiratory syndrome (SARS): Epidemiology and clinical features. *Postgrad Med J* 2004;**80**(945):373-381.
doi:10.1136/pgmj.2004.020263
 120. García LF. Immune Response, Inflammation, and the Clinical Spectrum of COVID-19. *Front Immunol* 2020;**11**:1441. doi:10.3389/fimmu.2020.01441
 121. Bourgonje AR, Abdulle AE, Timens W, et al. Angiotensin-converting enzyme 2 (ACE), SARS-CoV-2 and the pathophysiology of coronavirus disease 2019 (COVID-19). *J Pathol* 2020;**251**(3):228-248. doi:10.1002/path.5471
 122. Goh KJ, Choong MC, Cheong EH, et al. Rapid Progression to Acute Respiratory Distress Syndrome: Review of Current Understanding of Critical Illness from Coronavirus Disease 2019 (COVID-19). *Ann Acad Med Singap* 2020;**49**(3):108-118. PMID: 32200400.
 123. Zhou F, Gao X, Li M, Zhang Y. Shelter Hospital: Glimmers of Hope in Treating Coronavirus 2019. *Disaster Med Public Health Prep* 2020;**14**(5):e3-e4.
doi:10.1017/dmp.2020.105

124. Chen Z, He S, Li F, Yin J, Chen X. Mobile field hospitals, an effective way of dealing with COVID-19 in China: sharing our experience. *Biosci Trends* 2020;**14**(3):212-214. doi:10.5582/bst.2020.01110

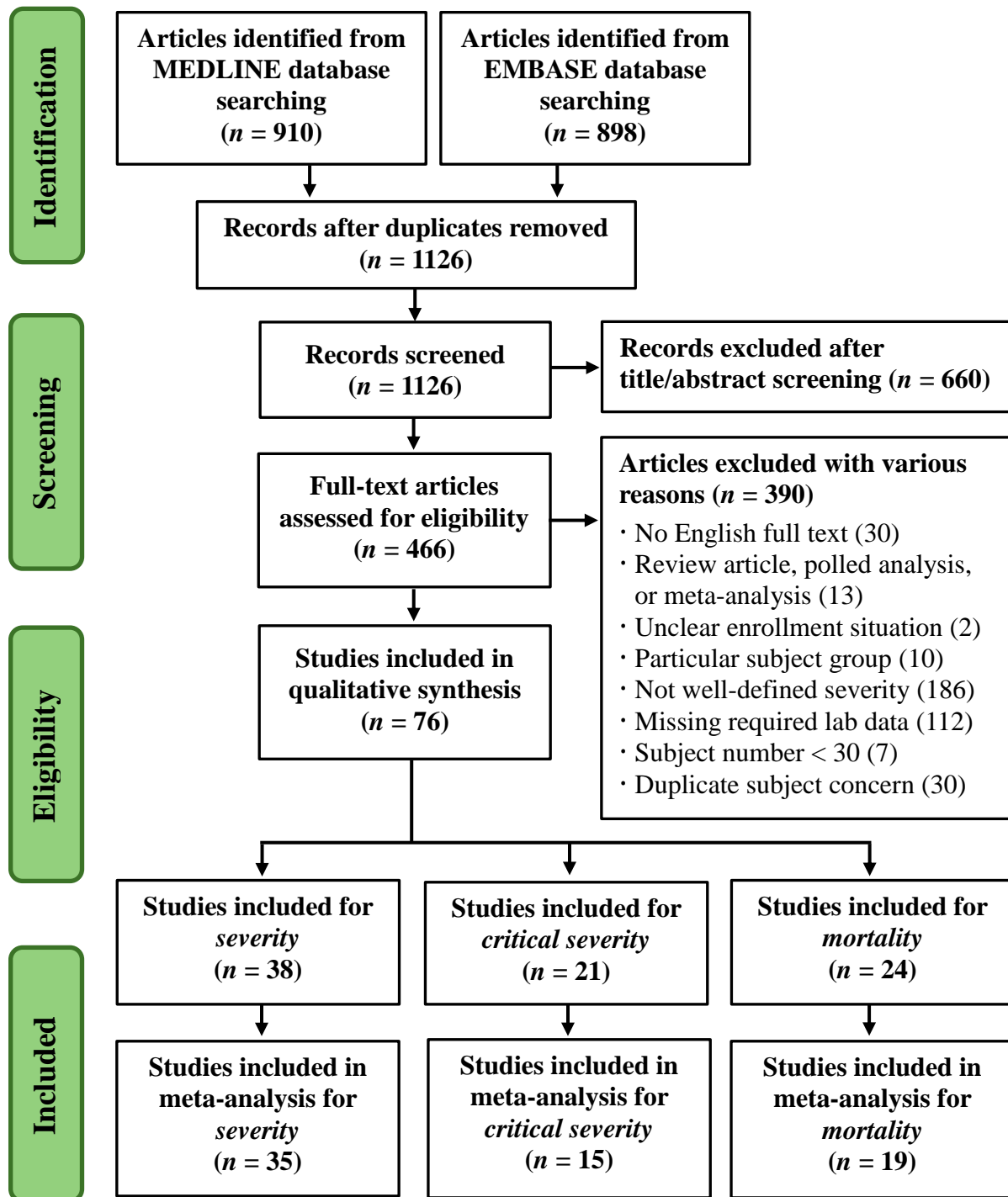


Figure 1: Flow diagram of literature search and study selection (PRISMA chart).

Table 1-A: Univariate analyses of the predictors for severity (severe vs. non-severe) by fitting a series of simple logistic regression models with the generalized estimating equations (GEE) method (assuming an ‘exchangeable’ working correlation structure).

Order ¹	Covariate	AUC of ROC	95% C.I. of AUC of ROC	Residual Deviance	R ²
Run 1: m = 10					
1	CRP mean or median	1.000	1–1	0.0000	1.0000
2	D-dimer mean or median	1.000	1–1	0.0000	1.0000
3	Lymphocyte count mean or median	1.000	1–1	0.0000	1.0000
4	Neutrophil count mean or median ≤ 2.50 or > 3.74	1.000	1–1	0.0000	1.0000
5	Platelet count mean or median ≤ 194.99 or > 232.94	1.000	1–1	0.0000	1.0000
6	Age mean or median	0.920	0.736–1	6.8134	0.6745
7	Lactate dehydrogenase mean or median > 214.99	0.900	0.704–1	5.4067	0.7609
8	PCT mean or median > 0.05	0.900	0.704–1	5.4067	0.7609
9	White blood cell count mean or median ≤ 4.21 or > 5.72	0.900	0.704–1	5.4067	0.7609
10	Age mean or median > 56.50	0.800	0.560–1	8.3758	0.5631
11	Percentage of male gender	0.560	0.153–0.967	13.7379	0.0166
Run 2: m = 14					
1	CRP mean or median	1.000	1–1	0.0000	1.0000
2	D-dimer mean or median	1.000	1–1	0.0000	1.0000
3	Lymphocyte count mean or median	1.000	1–1	0.0000	1.0000
4	Neutrophil count mean or median ≤ 2.39 or > 3.70	1.000	1–1	0.0000	1.0000
5	Age mean or median	0.939	0.821–1	8.6161	0.7165
6	Age mean or median > 56.05	0.857	0.676–1	– ²	0.5670

7	Lactate dehydrogenase mean or median > 224.20	0.857	0.659–1	11.4833	0.5763
8	Platelet count mean or median \leq 197.80 or > 236.14	0.786	0.557–1	14.4041	0.4007

Run 3: $m = 16$

1	CRP mean or median	1.000	1–1	0.0000	1.0000
2	Lymphocyte count mean or median	1.000	1–1	0.0000	1.0000
3	D-dimer mean or median	0.984	0.941–1	4.3995	0.8945
4	Age mean or median	0.953	0.862–1	8.8730	0.7529
5	Lactate dehydrogenase mean or median	0.953	0.851–1	10.2592	0.7004
6	Age mean or median > 55.64	0.875	0.715–1	10.0080	0.7103
7	Neutrophil count mean or median > 3.71	0.875	0.702–1	12.0566	0.6252

Run 4: $m = 18$

1	CRP mean or median	1.000	1–1	0.0000	1.0000
2	Lymphocyte count mean or median	1.000	1–1	0.0000	1.0000
3	D-dimer mean or median	0.988	0.953–1	4.4012	0.9077
4	Lactate dehydrogenase mean or median	0.963	0.882–1	10.5782	0.7334
5	Age mean or median	0.938	0.834–1	10.4480	0.7377
6	Age mean or median > 55.26	0.889	0.745–1	10.4311	0.7383

Run 5: $m = 28$

1	Lymphocyte count mean or median	0.929	0.820–1	19.4244	0.6663
2	Age mean or median	0.888	0.766–1	25.0481	0.5179
3	CRP mean or median > 27.27	0.821	0.675–0.968	26.1745	0.4844
4	Age mean or median > 57.33	0.750	0.584–0.916	31.4428	0.3087
5	D-dimer mean or median > 0.58	0.750	0.584–0.916	31.4428	0.3087

Run 6: $m = 56$					
1	Lymphocyte count mean or median	0.952	0.897–1	30.6650	0.7570
2	CRP mean or median	0.926	0.851–1	47.3394	0.5571
3	Age mean or median	0.874	0.778–0.970	51.0981	0.5032
4	CRP mean or median > 28.69	0.839	0.741–0.937	49.3143	0.5292
5	Age mean or median > 56.06	0.804	0.698–0.909	55.4443	0.4362
Run 7: $m = 70$					
1	Lymphocyte count mean or median	0.938	0.872–1	55.4496	0.5973
2	Lymphocyte count mean or median ≤ 1.03 or > 2.06	0.929	0.867–0.990	35.8650	0.7769
3	Age mean or median	0.855	0.762–0.948	66.2054	0.4750
4	Age mean or median > 55.02	0.800	0.705–0.895	69.9269	0.4282

¹ The simple logistic regression models were listed in the order of the values of the area under the curve (AUC) of Receiver Operating Characteristic (ROC).

² The 5 groups with “Age mean or median ≤ 56.06 years” were all *non-severe* so that the separation or high discrimination problem occurred in fitting the simple logistic regression model with the generalized estimating equations (GEE) method (assuming an ‘exchangeable’ working correlation structure). Then, the `logistf()` function of the `logistf` package was used to fit the Firth’s bias-reduced logistic regression model with the profile penalized log-likelihood method in R. Since the “Residual Deviance” of the Firth’s bias-reduced logistic regression model was not compatible with the others, it was not computed and listed.

Table 1-B: Multivariate analysis of the predictors for severity (severe vs. non-severe) by fitting a final multiple logistic regression model with the generalized estimating equations (GEE) method (assuming an ‘exchangeable’ working correlation structure).¹

Covariate	Estimated Regression Coefficient	Standard Error	χ^2 Value	<i>p</i> Value	Estimated Odds Ratio	95% Confidence Interval of Odds Ratio
Intercept	-2.6996	0.7028	14.7562	0.0001	0.0672	0.0170–0.2666
Lymphocyte count mean or median ≤ 1.03 or > 2.06	3.8343	0.8442	20.6299	<0.0001	46.2594	8.8435–241.9787
Age mean or median ² > 55.02	1.7565	0.6364	7.6174	0.0058	5.7921	1.6638–20.1634

¹ **Goodness-of-fit assessment:** Number of studies, $n = 35$, number of arms, $m = 70$ (cluster size = 2), the estimated area under the Receiver Operating Characteristic (ROC) curve = 0.968 > 0.7 with 95% C.I.: 0.928-1 (DeLong).

² Although “Age mean or median” beat “Age mean or median > 55.02 ” in Run 7 of Table 3-1A (AUC of ROC: 0.855 vs. 0.800), we chose “Age mean or median > 55.02 ” in this multiple logistic regression model because the GAM plot of “Age mean or median” indicated that its effect on logit(probability of being severe) flattened off for age’s mean or median ≤ 55.02 years.

Table 2-A: Univariate analyses of the predictors for critical severity (critically severe vs. non-critically severe) by fitting a series of simple logistic regression models with the generalized estimating equations (GEE) method (assuming an ‘exchangeable’ working correlation structure).

Order ¹	Covariate	AUC of ROC	95% C.I. of AUC of ROC	Residual Deviance	R ²
Run 1: m = 6					
1	Age mean or median	1.000	1–1	0.0000	1.0000
2	Lactate dehydrogenase mean or median	1.000	1–1	0.0000	1.0000
3	Lymphocyte count mean or median	1.000	1–1	0.0000	1.0000
4	Neutrophil count mean or median	1.000	1–1	0.0000	1.0000
5	CRP mean or median	0.889	0.581–1	6.1823	0.3993
6	D-dimer mean or median	0.889	0.581–1	4.2344	0.6582
7	White blood cell count mean or median	0.889	0.581–1	3.7726	0.7082
8	Platelet count mean or median	0.667	0.013–1	8.2068	0.0244
Run 2: m = 8					
1	Lymphocyte count mean or median	1.000	1–1	0.0000	1.0000
2	Neutrophil count mean or median	1.000	1–1	0.0000	1.0000
3	Age mean or median	0.938	0.764–1	4.8792	0.7199
4	Lactate dehydrogenase mean or median	0.938	0.764–1	3.7758	0.7990
5	White blood cell count mean or median	0.875	0.592–1	4.8638	0.7211
6	CRP mean or median	0.812	0.481–1	8.2593	0.3974
7	D-dimer mean or median	0.750	0.350–1	9.8188	0.1959

Run 3: $m = 12$					
1	Lymphocyte count mean or median	1.000	1-1	0.0000	1.0000
2	Neutrophil count mean or median	1.000	1-1	0.0000	1.0000
3	Age mean or median	0.944	0.816-1	5.8139	0.7922
4	White blood cell count mean or median	0.917	0.738-1	6.3748	0.7663
5	CRP mean or median	0.833	0.595-1	11.3907	0.4721
6	Lactate dehydrogenase mean or median	0.806	0.515-1	12.7967	0.3650
Run 4: $m = 16$					
1	Age mean or median	0.938	0.807-1	10.4603	0.6924
2	Lymphocyte count mean or median	0.938	0.824-1	9.1502	0.7428
3	Neutrophil count mean or median	0.938	0.807-1	10.9031	0.6744
4	White blood cell count mean or median	0.844	0.624-1	13.9161	0.5379
5	CRP mean or median	0.781	0.543-1	17.3436	0.3479
Run 5: $m = 24$					
1	Lymphocyte count mean or median	0.927	0.828-1	15.3659	0.7010
2	Neutrophil count mean or median	0.903	0.784-1	17.4015	0.6450
3	Age mean or median	0.878	0.735-1	20.8519	0.5386
4	White blood cell count mean or median	0.868	0.715-1	20.6280	0.5460
5	Age mean or median > 60.73	0.833	0.682-0.985	21.0499	0.5320
Run 6: $m = 24$					
1	Lymphocyte count mean or median	0.927	0.828-1	15.3659	0.7010
2	Neutrophil count mean or median	0.903	0.784-1	17.4015	0.6450

3	Age mean or median	0.878	0.735–1	20.8519	0.5386
4	Age mean or median > 60.72	0.833	0.682–0.985	21.0499	0.5320
Run 7: $m = 30$					
1	Lymphocyte count mean or median	0.933	0.850–1	18.2773	0.7203
2	Age mean or median	0.829	0.668–0.990	31.0932	0.3936
3	Age mean or median > 59.82	0.767	0.610–0.923	32.5430	0.3471

¹ The simple logistic regression models were listed in the order of the area under the curve (AUC) of Receiver Operating Characteristic (ROC).

Table 2–B: Multivariate analysis of the predictors for critical severity (critically severe vs. non-critically severe) by fitting a final multiple logistic regression model with the generalized estimating equations (GEE) method (assuming an ‘exchangeable’ working correlation structure).¹

Covariate	Estimated Regression Coefficient	Standard Error	χ^2 Value	<i>p</i> Value	Estimated Odds Ratio	95% Confidence Interval of Odds Ratio
Intercept	24.5729	11.5788	4.5038	0.0338	>1000	6.5426– >9999
Lymphocyte count mean or median	–30.7807	14.0442	4.8035	0.0284	<0.0001	<0.0001–0.0386
Age mean or median ² > 59.82	5.7288	1.7269	11.0050	0.0009	307.6130	10.4237– 9077.9402

¹ **Goodness-of-fit assessment:** Number of studies, $n = 15$, number of arms, $m = 30$ (cluster size = 2), the estimated area under the Receiver Operating Characteristic (ROC) curve = 0.991 > 0.7 with 95% C.I.: 0.970-1 (DeLong).

² Although “Age mean or median” beat “Age mean or median > 59.82” in Run 7 of Table 3-2A (AUC of ROC: 0.829 vs. 0.767), we chose “Age mean or median > 59.82” in this multiple logistic regression model because the GAM plot of “Age mean or median” indicated that its effect on logit(probability of being severe) flattened off for age’s mean or median between 50 and 60 years and dropped off for age’s mean or median > 67.5 years.

Table 3-A: Univariate analyses of the predictors for mortality (dead vs. alive) by fitting a series of simple logistic regression models with the generalized estimating equations (GEE) method (assuming an ‘exchangeable’ working correlation structure).

Order ¹	Covariate	AUC of ROC	95% C.I. of AUC of ROC	Residual Deviance	R ²
Run 1: m = 12					
1	Age mean or median	1.000	1–1	0.0000	1.0000
2	Lymphocyte count mean or median	0.986	0.948–1	2.7726	0.9134
3	CRP mean or median	0.972	0.895–1	3.6475	0.8816
4	Lactate dehydrogenase mean or median	0.944	0.816–1	7.1707	0.7274
5	Neutrophil count mean or median	0.944	0.816–1	5.0828	0.8242
6	White blood cell count mean or median	0.944	0.816–1	6.2940	0.7701
7	D-dimer mean or median	0.917	0.738–1	8.4516	0.6592
8	D-dimer mean or median > 1.94	0.917	0.753–1	5.7416	0.7955
9	Lactate dehydrogenase mean or median > 443.26	0.917	0.753–1	5.7416	0.7955
10	Platelet count mean or median	0.861	0.625–1	9.9462	0.5698
11	Platelet count mean or median ≤ 183.69	0.833	0.602–1	10.8135	0.5125
Run 2: m = 14					
1	Lymphocyte count mean or median	0.990	0.962–1	2.7726	0.9270
2	Age mean or median	0.959	0.869–1	6.3268	0.8096
3	Neutrophil count mean or median	0.959	0.864–1	5.1213	0.8528
4	White blood cell count mean or median	0.959	0.864–1	6.3653	0.8081
5	Lactate dehydrogenase mean or median	0.939	0.806–1	10.8264	0.6110
6	CRP mean or median	0.878	0.667–1	13.2424	0.4750

7	CRP mean or median > 85.76	0.857	0.659–1	11.4833	0.5763
8	Lactate dehydrogenase mean or median > 503.93	0.857	0.659–1	11.4833	0.5763

Run 3: $m = 16$

1	Lymphocyte count mean or median	0.992	0.971–1	2.7726	0.9369
2	Lactate dehydrogenase mean or median	0.938	0.807–1	12.4176	0.6090
3	Age mean or median	0.922	0.794–1	10.8942	0.6748
4	Neutrophil count mean or median	0.906	0.756–1	10.2175	0.7021
5	White blood cell count mean or median	0.906	0.756–1	11.8361	0.6349
6	Lactate dehydrogenase mean or median > 501.70	0.875	0.702–1	12.0566	0.6252
7	White blood cell count mean or median > 6.74	0.812	0.611–1	15.2763	0.4673

Run 4: $m = 20$

1	Lymphocyte count mean or median	0.990	0.966–1	3.8191	0.9299
2	Age mean or median	0.930	0.821–1	12.1678	0.7208
3	Neutrophil count mean or median	0.920	0.797–1	12.6233	0.7067
4	Lactate dehydrogenase mean or median	0.910	0.783–1	16.9125	0.5569
5	Lactate dehydrogenase mean or median > 479.84	0.850	0.687–1	16.7100	0.5647

Run 5: $m = 28$

1	Lymphocyte count mean or median	0.995	0.983–1	3.8191	0.9513
2	Age mean or median	0.954	0.882–1	13.6223	0.7911
3	Neutrophil count mean or median	0.913	0.811–1	19.5828	0.6625

Run 6: $m = 38$

1	Lymphocyte count mean or median	0.935	0.836–1	31.0924	0.5778
---	---------------------------------	-------	---------	---------	--------

2	Age mean or median	0.913	0.807–1	30.6503	0.5866
3	Age mean or median > 67.28	0.895	0.796–0.994	24.8313	0.6926
4	Lymphocyte count mean or median \leq 0.87	0.895	0.796–0.994	24.8313	0.6926

¹ The simple logistic regression models were listed in the order of the area under the curve (AUC) of Receiver Operating Characteristic (ROC).

Table 3-B: Multivariate analysis of the predictors for mortality (dead vs. alive) by fitting a final multiple logistic regression model with the generalized estimating equations (GEE) method (assuming an ‘independence’ working correlation structure).¹

Covariate	Estimated Regression Coefficient	Standard Error	χ^2 Value	<i>p</i> Value	Estimated Odds Ratio	95% Confidence Interval of Odds Ratio
Intercept	-2.8551	1.0052	17.5966	<0.0001	0.0576	0.0045–0.2744
Lymphocyte count mean or median ≤ 0.87	2.8551	1.2055	7.0560	0.0079	17.3756	2.1157–232.7834
Age mean or median ² > 67.28	2.8551	1.2055	7.0560	0.0079	17.3756	2.1157–232.7834

¹ **Goodness-of-fit assessment:** Number of studies, $n = 19$, number of arms, $m = 38$ (cluster size = 2), the estimated area under the Receiver Operating Characteristic (ROC) curve = 0.954 > 0.7 with 95% C.I.: 0.888-1 (DeLong). Yet, the regression coefficients and the standard errors were estimated by fitting the corresponding Firth’s bias-reduced logistic regression model with the `logistf` function of the `logistf` package in R owing to the separation (or high discrimination) problem.

² Although “Age mean or median” beat “Age mean or median > 67.28” in Run 6 of Table 3-3A (AUC of ROC: 0.913 vs. 0.895), we chose “Age mean or median > 67.28” in this multiple logistic regression model because the GAM plot of “Age mean or median” indicated that its effect on $\text{logit}(\text{probability of being dead})$ dropped off for age’s mean or median > 77.5 years.

Appendix I: The profile of the collected 76 studies with a total of 26,627 laboratory-confirmed COVID-19 patients.¹

Study	Country	Recruitment Period ²	Total	Non-Severe	Severe	Non-Critical Severe	Critical Severe	Alive	Dead
Almazeedi Sulaiman et al (41)	Kuwait	Feb 24-Apr 20	1096	–	–	1054	42	1077	19
Bahl Amit et al (24)	USA	Mar 1-Mar 31	1461	–	–	–	–	1134	327
Berenguer Juan et al (42)	Spain	Feb-Mar 17	4035	–	–	–	–	2904	1131
Bonetti Graziella et al (25)	Italy	Mar 1-Mar 30	144	–	–	–	–	74	70
Botero Diana Maria Ronderos et al (43)	USA	Mar 15-Apr 23	157	–	–	–	–	132	25
Brill Simon E. et al (44)	UK	Mar 10-Apr 8	410	–	–	–	–	237	173
Cai Qingxian et al (45)	China	Jan 11-Feb 6	298	240	58	–	–	–	–
Chen Lei et al (18)	China	Jan 20-Apr 4	1859	–	–	–	–	1651	208
Chen Tao et al (46)	China	Jan 13-Feb 12	274	–	–	–	–	161	113
Ciceri Fabio et al (23)	Italy	Feb 25-Mar 24	410	–	–	–	–	315	95
Cipriani Alberto et al (47)	Italy	Feb 26-Mar 31	109	–	–	–	–	89	20
Fan Bingwen Eugene et al (48)	Singapore	Jan 23-Feb 4	67	–	–	58	9	–	–
Ferguson Jessica et al (49)	USA	Mar 13-Apr 11	72	–	–	51	21	–	–
Gao Yong et al (50)	China	Jan 23-Feb 2	43	28	15	–	–	–	–
Gayam Vijay et al (51)	USA	Mar 1-Apr 9	408	–	–	–	–	276	132
Ghweil Ali A et al (10)	Egypt	Mar-Apr	66	36	30	–	–	–	–
Giacomelli Andrea et al (52)	Italy	Feb 21-Mar 19	233	–	–	–	–	185	48
He Li et al (53)	China	Feb 10-Apr 9	174	120	54	–	–	–	–
Hong Kyung Soo et al (54)	South Korea	–	98	–	–	85	13	–	–
Huang Chaolin et al (55)	China	Dec 16 '19-Jan 2	41	–	–	28	13	–	–

Huang Huihuang et al (17)	China	Jan 13-Mar 10	64	43	21	–	–	–	–
Israelsen Simone Bastrup et al (56)	Denmark	Mar 10-Apr 23	175	–	–	148	27	–	–
Javannian Mostafa et al (57)	Iran	Feb 25-Mar 12	100	–	–	–	–	81	19
Jiang Hao et al (58)	China	Feb-Mar	59	–	–	15	44	–	–
Khalil K. et al (59)	UK	Mar 7-Apr 7	220	–	–	–	–	162	58
Khamis Faryal et al (60)	Oman	Feb 24-Apr 24	63	–	–	39	24	–	–
Lee Ji Yeon et al (61)	South Korea	Feb 18-Mar 4	98	–	–	–	–	78	20
Lee Ji Yeon et al (62)	South Korea	Feb 21-Apr 2	694	557	137	–	–	–	–
Lendorf Maria Elisabeth et al (63)	Denmark	Mar 1-May 4	111	–	–	91	20	–	–
Li Huan et al (64)	China	Jan 18-Feb 26	132	60	72	116	16	–	–
Li Kunhua et al (65)	China	Jan -Feb	83	58	25	–	–	–	–
Li Tao et al (66)	China	Feb 1-Mar 31	312	207	105	–	–	–	–
Li Xiaolei et al (67)	China	Jan 24-Mar 12	215	159	56	–	–	–	–
Liu Jiao et al (68)	China	Dec 29 '19-Feb 28	1190	–	–	–	–	1033	157
Liu Songqiao et al (69)	China	Jan 10-Mar 15	625	561	64	–	–	–	–
Lv Zhihua et al (70)	China	Feb 4-Feb 28	354	115	239	270	84	–	–
Mao Ling et al (71)	China	Jan 16-Feb 19	214	126	88	–	–	–	–
Ortiz-Brizuela Edgar et al (72)	Mexico	Feb 26-Apr 11	140	–	–	111	29	–	–
Qian Guo-Qing et al (73)	China	Jan 20-Feb 11	91	82	9	–	–	–	–
Qun Sen et al (16)	China	Feb 2-Mar 17	230	–	–	225	5	–	–
Romero-Sanchez Carlos M. et al (74)	Spain	Mar 1-Apr 1	841	512	329	–	–	–	–
Satış Hasan et al (75)	Turkey	–	38	27	11	–	–	–	–
Shahriarirad Reza et al (76)	Iran	Feb 20-Mar 20	113	–	–	102	11	104	9
Shang Weifeng et al (77)	China	Jan 16-Feb 28	443	304	139	–	–	–	–

Shu Zixin et al (21)	China	Jan 15-Mar 2	293	207	86	–	–	–	–
Sun Dong et al (78)	China	Jan 23-Feb 19	84	61	23	–	–	–	–
Sun Haiying et al (19)	China	Jan 29-Mar 5	244	–	–	–	–	123	121
Sun Suyu et al (79)	China	Jan 19-Feb 20	116	89	27	–	–	–	–
Sun Ying et al (80)	China	Jan-Apr	63	–	–	54	9	–	–
Taghiloo Saeid et al (81)	Iran	Mar-Apr	61	39	22	–	–	–	–
Tao Zheyang et al (82)	China	Dec 1 '19-Mar	222	202	20	–	–	–	–
Uchida Yoshihito et al (83)	Japan	Mar-Jun	35	27	8	–	–	–	–
Vena Antonio et al (84)	Italy	Feb 25-Mar 25	275	–	–	–	–	155	120
Wang Changzheng et al (85)	China	Jan 23-Feb 13	161	131	30	–	–	–	–
Wang Dan et al (86)	China	Jan 15-Feb 28	143	72	71	–	–	–	–
Wang Dawei et al (87)	China	Jan 1-Jan 28	138	–	–	102	36	–	–
Wang Feng et al (88)	China	–	65	–	–	50	15	–	–
Wang Ruirui et al (89)	China	Jan 22-Feb 18	125	100	25	–	–	–	–
Wang Ruoran et al (90)	China	Jan 30-Feb 24	450	–	–	–	–	372	78
Wu J. et al (91)	China	Jan 20-Feb 19	280	197	83	–	–	–	–
Yan Xiquan et al (92)	China	Jan 21-Jun 27	194	156	38	180	14	–	–
Yang Luhuan et a (93)	China	Jan 30-Feb 8	200	–	–	171	29	–	–
Yang Miao et al (94)	China	Jan 17-Mar 12	108	84	24	–	–	–	–
Yao Qingchun et al (95)	China	Jan 30-Feb 11	96	83	13	–	–	–	–
Ye Wenjing et al (96)	China	Jan 1-Mar 16	349	–	–	–	–	297	52
Yu Caizheng et al (97)	China	Jan 14-Feb 28	1663	799	864	–	–	–	–
Zerah Lorene et al (98)	France	Mar 13-Apr 15	821	–	–	–	–	571	250
Zhang Chi et al (99)	China	Jan-Feb	80	56	21	–	–	77	3

Zhang Jin-jin et al (100)	China	Jan 16-Feb 3	140	82	58	–	–	–	–
Zhang Jin-jin et al (101)	China	Dec 29 '19-Feb 16	289	–	–	–	–	240	49
Zhang Shan-Yan et al (22)	China	Jan 17-Feb 12	788	710	78	771	17	–	–
Zhang Wenjing et al (14)	China	Jan-Mar	90	70	20	–	–	–	–
Zhao Zirun et al (102)	USA	Mar 9-Apr 20	593	–	–	398	195	–	–
Zheng Fang et al (103)	China	Jan 17-Feb 7	161	131	30	–	–	–	–
Zheng Yongli et al (104)	China	Jan 16-Feb 20	99	67	32	–	–	–	–
Zheng Yufen et al (20)	China	Jan 17-Feb 26	141	112	29	–	–	–	–
Sub-total			–	9,764		4,792		14,825	
Total			26,627	6,710	3,054	4,119	673	11,528	3,297

¹ The detailed data can be found in the Excel file in the online supplementary materials.

² The subjects were recruited during the year 2020 if not specified.

Appendix II-1: The summary statistics of the demographics, clinical characteristics, comorbidities, and laboratory data of the COVID-19 patients on initial hospital presentations from the collected 38 studies for the assessment of severity.

Variable	Number of Studies ¹ (<i>n</i>)	Non-Severe			Severe			<i>p</i> Value ²
		Median	Minimum	Maximum	Median	Minimum	Maximum	
Demographics								
Age (years)	38	46.50	37.55	67.10	62.55	39.47	75.00	<0.0001
Male (%)	35	50.40	27.80	77.80	60.00	38.10	75.00	0.0018
Current smoker (%)	7	6.58	0	36.10	8.98	0	30.00	0.5649
Vital signs								
Heart rate (beats/min)	4	86.42	82.00	89.00	89.99	86.00	92.00	0.1465
Respiratory rate (breaths/min)	3	20.00	18.87	20.00	20.98	20.00	21.00	0.1642
Systolic pressure (mmHg)	2	108.15	93.30	123.00	111.95	91.00	132.90	1
Clinical features								
Fever (%)	26	73.36	16.80	97.20	89.75	38.30	100	0.0030
Cough (%)	26	58.97	31.50	81.50	69.60	15.00	100	0.0570
Fatigue (%)	17	25.71	4.17	76.10	40.00	5.17	87.50	0.3394
Myalgia (%)	15	14.21	2.00	43.50	23.53	0	51.81	0.2290
Dyspnea (%)	11	11.90	1.65	44.40	30.00	2.15	80.00	0.0417
Sputum production (%)	14	23.70	6.90	88.10	37.55	9.00	96.20	0.1636
Headache (%)	17	10.30	1.20	25.60	13.30	0	38.55	0.4484
Sore throat (%)	12	14.11	0.83	26.10	10.84	0	46.70	0.7949
Diarrhea (%)	19	8.21	0.51	28.20	7.62	0	50.00	0.9070
Shortness of breath (%)	5	22.86	6.90	45.80	25.00	8.00	100	0.5476
Chest congestion / Chest tightness (%)	5	29.00	4.50	40.30	45.30	0	50.00	0.4206

Chest pain (%)	6	2.10	1.02	15.80	13.42	2.15	20.00	0.0931
Comorbidities								
Any (%)	14	32.10	6.90	70.50	58.27	31.38	90.50	0.0033
Hypertension (%)	27	14.80	2.90	48.00	37.90	4.30	82.90	<0.0001
Diabetes (%)	28	8.30	0	34.80	16.30	6.70	46.70	<0.0001
Cardiovascular disease (%)	26	4.68	0	22.70	12.75	0	47.37	0.0014
Chronic obstructive pulmonary disease (%)	21	1.74	0	7.73	6.70	0	24.00	0.0003
Malignancy (%)	16	1.63	0	7.40	4.46	0	10.30	0.0328
Cerebrovascular disease (%)	11	2.80	0.94	7.50	7.90	0	25.91	0.0086
Chronic liver disease (%)	15	3.10	0	8.33	4.50	0	20.80	0.2444
Chronic renal disease (%)	16	0.84	0	6.70	4.61	1.70	13.00	0.0006
Blood routine								
White blood cell count ($\times 10^9/L$)	36	5.00	3.60	8.59	5.75	3.40	12.10	0.0047
Neutrophil count ($\times 10^9/L$)	28	3.22	2.40	6.69	4.43	1.65	10.51	0.0011
Lymphocyte count ($\times 10^9/L$)	36	1.30	0.80	1.90	0.81	0.48	2.19	<0.0001
Neutrophil/Lymphocyte ratio (NLR)	4	2.49	2.38	7.93	8.15	4.75	29.90	0.1143
Platelet count ($\times 10^9/L$)	26	206.00	156.00	240.46	176.00	86.00	265.00	0.0077
Blood biochemistry								
Alanine aminotransferase (ALT) (U/L)	25	23.00	18.00	40.53	28.54	19.90	54.00	0.0016
Aspartate aminotransferase (AST) (U/L)	23	25.00	16.00	42.60	34.00	26.00	61.00	0.0003
Total bilirubin ($\mu\text{mol/L}$)	15	9.80	6.60	13.70	11.30	6.70	21.20	0.0128
Lactate dehydrogenase (LDH) (U/L)	17	209.20	150.40	489.00	287.00	220.10	695.19	0.0001
Coagulation function								
D-dimer (mg/L or $\mu\text{g/mL}$)	18	0.40	0.20	1.90	0.93	0.30	7.93	0.0011

Inflammatory markers								
C-reactive protein (CRP) (mg/L)	29	9.70	1.70	106.66	53.80	19.50	291.00	<0.0001
Procalcitonin (PCT) (×100 ng/mL)	22	4.65	0.13	162.00	1.00	0	331.00	0.0280
Myocardial injury marker								
Hypersensitive troponin I (hs-cTnI) (×100 ng/mL)	3	0.75	0.40	1.00	1.53	0.70	5.00	0.4000

¹ It was the number of studies without missing values among the collected 38 studies.

² The listed *p* values were calculated using the Wilcoxon rank-sum test based on the available number of studies.

Appendix II-2: The summary statistics of the demographics, clinical characteristics, and biomarkers of the COVID-19 patients on initial hospital presentations from the collected 21 studies for the assessment of critical severity.

Variable	Number of Studies ¹ (<i>n</i>)	Non-Critically Severe			Critically Severe			<i>p</i> Value ²
		Median	Minimum	Maximum	Median	Minimum	Maximum	
Demographics								
Age (years)	19	52.00	37.10	73.00	63.20	49.00	71.00	0.0030
Male (%)	18	53.78	37.60	82.00	63.80	46.20	88.00	0.0095
Current smoker (%)	5	10.96	6.71	21.90	11.80	0	26.70	1
Vital signs								
Heart rate (beats/min)	5	87.00	84.90	98.00	89.00	83.50	100	0.6742
Respiratory rate (breaths/min)	6	20.45	20.00	22.00	22.50	20.00	30.00	0.1832
Systolic pressure (mmHg)	6	125.15	90.00	130.00	126.05	91.00	145.00	0.6304
Clinical features								
Fever (%)	15	73.93	51.00	98.00	77.80	45.00	100	0.6630
Cough (%)	15	64.03	27.60	90.10	66.70	45.00	100	1
Fatigue (%)	11	26.00	3.30	65.70	35.30	7.10	90.90	0.4779
Myalgia (%)	14	24.95	6.70	75.50	25.25	9.00	79.30	0.9100
Dyspnea (%)	8	35.00	4.10	61.50	73.40	20.00	92.00	0.0086
Sputum production (%)	10	25.25	1.70	48.74	20.20	9.70	86.00	0.9698
Headache (%)	13	14.60	5.90	80.18	9.00	0	62.07	0.3048
Sore throat (%)	10	14.42	9.50	32.40	11.75	0	33.30	0.3642
Diarrhea (%)	12	9.01	1.40	33.30	10.15	0	37.90	0.6441
Shortness of breath (%)	7	21.00	1.70	74.00	66.67	28.60	95.00	0.0530
Chest congestion / Chest tightness (%)	1	15.80	15.80	15.80	15.40	15.40	15.40	1

Chest pain (%)	3	33.30	11.80	36.30	54.50	9.50	55.20	0.7000
Comorbidities								
Any (%)	8	31.12	26.22	67.00	58.75	33.33	100	0.0104
Hypertension (%)	14	25.50	14.00	42.70	40.60	15.00	88.20	0.0094
Diabetes (%)	15	12.70	5.90	26.10	23.50	8.00	46.00	0.0128
Cardiovascular disease (%)	16	11.30	1.32	51.40	17.00	0	60.00	0.2351
Chronic obstructive pulmonary disease (%)	14	2.68	0	9.00	5.75	0	36.00	0.1901
Malignancy (%)	12	1.90	0.74	8.00	1.20	0	11.10	0.4322
Cerebrovascular disease (%)	5	1.34	0.57	12.00	10.00	0	21.00	0.3457
Chronic liver disease (%)	10	2.15	0	6.74	1.20	0	11.80	0.6456
Chronic renal disease (%)	10	2.55	0.60	7.70	7.00	0	15.00	0.0638
Blood routine								
White blood cell count ($\times 10^9/L$)	20	5.74	4.30	6.77	6.82	5.10	11.30	0.0001
Neutrophil count ($\times 10^9/L$)	13	3.21	1.70	4.64	5.54	3.50	10.60	0.0009
Lymphocyte count ($\times 10^9/L$)	17	1.14	0.86	1.60	0.80	0.40	1.37	0.0001
Neutrophil/Lymphocyte ratio (NLR)	1	2.50	2.50	2.50	6.32	6.32	6.32	1
Platelet count ($\times 10^9/L$)	15	193.00	149.00	245.00	196.00	142.00	253.00	0.9504
Blood biochemistry								
Alanine aminotransferase (ALT) (U/L)	15	30.10	23.00	73.02	37.80	24.76	89.10	0.0084
Aspartate aminotransferase (AST) (U/L)	11	31.00	25.04	47.00	49.00	26.50	100.30	0.0104
Total bilirubin ($\mu\text{mol/L}$)	11	9.55	0.69	13.68	13.00	0.64	19.50	0.0612
Lactate dehydrogenase (LDH) (U/L)	15	281.00	210.41	686.23	443.50	320.50	1684.00	0.0009
Coagulation function								
D-dimer (mg/L or $\mu\text{g/mL}$)	13	0.50	<0.01	4.10	1.76	0.36	11.97	0.0333

Inflammatory markers								
C-reactive protein (CRP) (mg/L)	16	39.32	8.00	68.88	103.22	9.90	177.00	0.0005
Procalcitonin (PCT) ($\times 100$ ng/mL)	9	13.00	5.00	41.00	44.00	10.00	270.00	0.0331
Myocardial injury marker								
Hypersensitive troponin I (hs-cTnI) ($\times 100$ ng/mL)	4	0.46	0.35	1.00	1.03	0.33	1.10	0.3836

¹ It was the number of studies without missing values among the collected 21 studies.

² The listed p values were calculated using the Wilcoxon rank-sum test based on the available number of studies.

Appendix II-3: The summary statistics of the demographics, clinical characteristics, and biomarkers of the COVID-19 patients on initial hospital presentations from the collected 24 studies for the assessment of mortality.

Variable	Number of Studies ¹ (n)	Alive			Dead			p Value ²
		Median	Minimum	Maximum	Median	Minimum	Maximum	
Demographics								
Age (years)	22	61.42	38.70	86.00	72.50	55.00	87.00	<0.0001
Male (%)	23	55.00	38.50	89.00	64.30	20.00	84.21	0.0588
Current smoker (%)	7	3.00	2.00	6.30	7.00	2.00	21.21	0.1098
Vital signs								
Heart rate (beats/min)	12	86.10	80.00	98.00	91.00	80.00	101.00	0.0990
Respiratory rate (breaths/min)	12	20.00	20.00	23.00	23.70	20.00	26.00	0.0020
Systolic pressure (mmHg)	9	125.20	110.70	138.10	130.50	114.00	140.50	0.0771
Clinical features								
Fever (%)	15	76.54	11.96	94.20	66.67	33.30	92.00	1
Cough (%)	16	63.34	27.90	81.48	63.18	38.00	84.21	0.8672
Fatigue (%)	8	40.50	3.30	76.54	52.50	10.50	88.90	0.3282
Myalgia (%)	12	16.01	5.90	61.50	12.45	2.10	55.60	0.4776
Dyspnea (%)	9	42.60	14.38	81.48	62.00	31.20	84.21	0.1331
Sputum production (%)	8	30.59	2.00	46.91	39.67	0.80	66.67	0.3282
Headache (%)	10	7.10	5.00	61.72	4.10	0	66.70	0.0892
Sore throat (%)	8	7.90	2.00	32.70	4.60	0	22.20	0.4005
Diarrhea (%)	14	14.11	1.30	31.00	10.86	0	29.80	0.4481
Shortness of breath (%)	5	43.20	2.00	63.04	65.80	42.10	75.00	0.0952
Chest congestion / Chest tightness (%)	2	22.19	14.38	30.00	40.83	32.65	49.00	0.3333

Chest pain (%)	6	11.10	5.00	38.50	7.15	2.60	63.15	0.4848
Comorbidities								
Any (%)	9	54.17	29.70	67.90	78.90	61.15	100	0.0003
Hypertension (%)	21	29.00	15.30	68.00	61.20	22.20	100	0.0001
Diabetes (%)	22	16.39	5.10	37.68	30.00	9.00	55.00	0.0007
Cardiovascular disease (%)	21	10.00	1.90	85.14	26.30	10.30	100	0.0002
Chronic obstructive pulmonary disease (%)	20	4.30	0.37	20.00	14.17	5.30	33.30	0.0001
Malignancy (%)	14	3.26	0.96	10.50	10.80	0	20.00	0.0179
Cerebrovascular disease (%)	8	4.72	0	14.00	10.56	0	25.00	0.0927
Chronic liver disease (%)	10	2.20	0.46	8.00	5.25	0	10.52	0.2261
Chronic renal disease (%)	17	3.80	0.74	35.00	15.00	0	39.00	0.0011
Blood routine								
White blood cell count ($\times 10^9/L$)	18	5.62	4.32	8.14	8.08	4.94	15.50	<0.0001
Neutrophil count ($\times 10^9/L$)	15	3.92	2.90	6.50	6.45	4.12	14.70	<0.0001
Lymphocyte count ($\times 10^9/L$)	21	1.00	0.80	2.60	0.70	0.45	1.45	<0.0001
Neutrophil/Lymphocyte ratio (NLR)	7	3.58	2.82	5.31	10.34	6.60	14.96	0.0006
Platelet count ($\times 10^9/L$)	18	204.00	173.61	238.00	182.25	90.50	219.30	0.0108
Blood biochemistry								
Alanine aminotransferase (ALT) (U/L)	17	30.00	20.00	49.70	32.00	13.00	68.00	0.2774
Aspartate aminotransferase (AST) (U/L)	15	38.57	24.00	68.00	47.00	31.00	80.30	0.0224
Total bilirubin ($\mu\text{mol/L}$)	11	9.06	0.68	13.00	11.70	0.38	24.90	0.2371
Lactate dehydrogenase (LDH) (U/L)	14	369.86	201.00	628.86	532.50	318.00	1116.50	0.0009
Coagulation function								
D-dimer (mg/L or $\mu\text{g/mL}$)	18	0.80	0.18	1.83	2.28	0.74	17.80	<0.0001

Inflammatory markers								
C-reactive protein (CRP) (mg/L)	22	42.45	2.60	120.00	116.50	10.00	189.00	<0.0001
Procalcitonin (PCT) (×100 ng/mL)	13	9.00	0.25	58.00	33.00	0.04	330.00	0.0292
Myocardial injury marker								
Hypersensitive troponin I (hs-cTnI) (×100 ng/mL)	12	1.00	0.30	13.34	4.48	2.52	27.90	0.0003

¹ It was the number of studies without missing values among the collected 24 studies.

² The listed *p* values were calculated using the Wilcoxon rank-sum test based on the available number of studies.