

# 1 **Rapid comparative evaluation of SARS-CoV-2 rapid point-of-care antigen tests**

2

3 Anna Denzler<sup>1, †</sup>, Max L. Jacobs<sup>1, †</sup>, Victoria Witte<sup>1</sup>, Paul Schnitzler<sup>2</sup>, Claudia M.  
4 Denzinger<sup>3,\*</sup>, Michael Knop<sup>1,4,5,\*</sup>

5

## 6 **Affiliations:**

7 <sup>1</sup> Center for Molecular Biology of Heidelberg University (ZMBH), Heidelberg,  
8 Germany.

9 <sup>2</sup> Department of Infectious Diseases, Virology, Heidelberg University Hospital,  
10 Heidelberg, Germany.

11 <sup>3</sup> Department of Infectious Diseases, Division of Tropical Medicine, Heidelberg  
12 University Hospital, Heidelberg, Germany.

13 <sup>4</sup> German Cancer Research Center (DKFZ), Heidelberg, Germany.

14 <sup>5</sup> DKFZ-ZMBH Alliance, Heidelberg, Germany.

15 \* Corresponding authors.

16 † These authors contributed equally to this work.

17

18

19 **Keywords:** Comparison of Antigen-detecting rapid diagnostic test; COVID-19;  
20 SARS-CoV-2; Testing sensitivity, non-functional AgPOC tests.

21

22

23

## 24 **Corresponding authors:**

25 Michael Knop

26 Center for Molecular and Cellular Biology Heidelberg, Heidelberg University,  
27 Heidelberg, Germany

28 [m.knop@zmbh.uni-heidelberg.de](mailto:m.knop@zmbh.uni-heidelberg.de)

29 +49 6221 54 4213

30 Claudia M. Denzinger

31 Division of Tropical Medicine, Center for Infectious Diseases, Heidelberg University  
32 Hospital, Heidelberg, Germany

33 [Claudia.Denzinger@uni-heidelberg.de](mailto:Claudia.Denzinger@uni-heidelberg.de)

34 +49 6221 56 36637

35

NOTE: This preprint reports new research that has not been certified by peer review and should not be used to guide clinical practice.

36 **Abstract**

37 **Background:** Currently, more than 500 different AgPOCTs for SARS-CoV-2  
38 diagnostics are on sale, for many of which no data about sensitivity other than self-  
39 acclaimed values by the manufacturers are available. In many cases these do not  
40 reflect real-life diagnostic sensitivities. Therefore, manufacturer-independent quality  
41 checks of available AgPOCTs are needed, given the potential implications of false-  
42 negative results.

43 **Objective:** The objective of this study was to develop a scalable approach for direct  
44 comparison of the analytical sensitivities of commercially available SARS-CoV-2  
45 antigen point-of-care tests (AgPOCTs) in order to rapidly identify poor performing  
46 products.

47 **Methods:** We present a methodology for quick assessment of the sensitivity of  
48 SARS-CoV-2 lateral flow test stripes suitable for quality evaluation of many different  
49 products. We established reference samples with high, medium and low SARS-CoV-  
50 2 viral loads along with a SARS-CoV-2 negative control sample. Test samples were  
51 used to semi-quantitatively assess the analytical sensitivities of 32 different  
52 commercial AgPOCTs in a head-to-head comparison.

53 **Results:** Among 32 SARS-CoV-2 AgPOCTs tested, we observe sensitivity  
54 differences across a broad range of viral loads ( $\sim 7.0 \times 10^8$  to  $\sim 1.7 \times 10^5$  SARS-CoV-2  
55 genome copies per ml). 23 AgPOCTs detected the Ct25 test sample ( $\sim 1.4 \times 10^6$   
56 copies/ ml), while only five tests detected the Ct28 test sample ( $\sim 1.7 \times 10^5$  copies/  
57 ml). In the low range of analytical sensitivity we found three saliva spit tests only  
58 delivering positive results for the Ct21 sample ( $\sim 2.2 \times 10^7$  copies/ ml). Comparison  
59 with published data support our AgPOCT ranking. Importantly, we identified an  
60 AgPOCT offered in many local drugstores and supermarkets, which did not reliably  
61 recognize the sample with highest viral load (Ct16 test sample with  $\sim 7.0 \times 10^8$  copies/  
62 ml) leading to serious doubts in its usefulness in SARS-CoV-2 diagnostics.

63 **Conclusion:** The rapid sensitivity assessment procedure presented here provides  
64 useful estimations on the analytical sensitivities of 32 AgPOCTs and identified a  
65 widely-spread AgPOCT with concerning low sensitivity.

66

67

68 **Funding:** The study was supported by the Ministry of Science, Research and Arts of  
69 the State of Baden-Wuerttemberg, Germany as well as internal funds from the  
70 Heidelberg University Hospital. The corresponding authors had access to all data at  
71 all time.

72

## 73 **Introduction**

74 In the SARS-CoV-2 pandemic, lateral-flow antigen tests were developed as a rapid  
75 alternative to SARS-CoV-2 reverse transcriptase quantitative polymerase chain  
76 reaction (RT-qPCR) based diagnostics. Because of their ease of use, lateral-flow  
77 antigen tests are applicable for point-of-care and self testing and can therefore be  
78 incorporated in the daily life to support viral containment (WHO, Interim guidance,  
79 2020). These tests, in the following referred to as antigen point-of-care tests  
80 (AgPOCTs), are meanwhile widely used for SARS-CoV-2 diagnostic and screening  
81 purposes. Currently, several hundred different SARS-CoV-2 AgPOCTs brands are  
82 commercially available to meet the demand (545 products for professional use are  
83 listed by the Federal Institute for Drugs and Medical Devices (Bundesinstitut für  
84 Arzneimittel und Medizinprodukte (BfArM)); as of July 27, 2021). However,  
85 sensitivity and specificity of the tests are not systematically assessed.

86 If a test is used by a professional operator, it falls under the 'low-risk' category of the  
87 European Union directive on In Vitro Diagnostics (IVD), which currently governs  
88 marketing authorization for IVDs in Europe. Under this directive, manufacturers can  
89 still self-certify COVID-19 tests and waive independent verification of the tests before  
90 they are marketed. The validation of the tests, which are offered on the Internet and  
91 in pharmacies, is therefore not assured in the view of the Paul Ehrlich Institute (PEI),  
92 Federal Institute for Vaccines and Biomedical Products, Germany  
93 ([https://www.pei.de/DE/newsroom/hp-meldungen/2020/200323-covid-19-nat-](https://www.pei.de/DE/newsroom/hp-meldungen/2020/200323-covid-19-nat-tests.html;jsessionid=F786872EBB85959AE8DA2B8FCB3ABE00.intranet222?nn=169730)  
94 [tests.html;jsessionid=F786872EBB85959AE8DA2B8FCB3ABE00.intranet222?nn=16](https://www.pei.de/DE/newsroom/hp-meldungen/2020/200323-covid-19-nat-tests.html;jsessionid=F786872EBB85959AE8DA2B8FCB3ABE00.intranet222?nn=169730)  
95 [9730](https://www.pei.de/DE/newsroom/hp-meldungen/2020/200323-covid-19-nat-tests.html;jsessionid=F786872EBB85959AE8DA2B8FCB3ABE00.intranet222?nn=169730)). There is also evidence of counterfeiting here. A new legislation governing  
96 independent validation by specialized and certified reference laboratories is planned,  
97 but will only become effective in March 2022 at the earliest.

98 If a test is distributed for layperson use, it falls under a ‘higher-risk’ category and  
99 requires independent validation. This validation of sensitivity is currently performed  
100 by the PEI together with reference laboratories and a list with AgPOCTs passing their  
101 criteria is provided (PEI, 2021). AgPOCTs failing the comparative evaluation by PEI  
102 will be removed from the list provided by BfArM. This list, however, comprises only  
103 products, which were also registered for listing by manufacturers or distributors  
104 ([https://www.bfarm.de/DE/Medizinprodukte/Aufgaben/Spezialthemen/Antigentests/\\_n](https://www.bfarm.de/DE/Medizinprodukte/Aufgaben/Spezialthemen/Antigentests/_node.html)  
105 [ode.html](https://www.bfarm.de/DE/Medizinprodukte/Aufgaben/Spezialthemen/Antigentests/_node.html)), rendering the absence of an AgPOCT from this list difficult to interpret.

106 Many in-depth AgPOCT characterization studies show that AgPOCT sensitivities can  
107 vary substantially. One study reporting on the validation of 122 AgPOCs has recently  
108 been published (Scheiblaue *et al.*, 2021). They found that 26 AgPOCTs do not fulfill  
109 the required minimum sensitivity, clearly illustrating that quite a number of circulating  
110 AgPOCT are insufficiently sensitive. In addition to this, significant brand-to-brand and  
111 lot-to-lot variations were observed (Dinnes *et al.*, 2021). These circumstances urge  
112 the need for an easy-to-use method to quickly assess AgPOCTs at market entry and  
113 periodically thereafter for post-implementation quality control.

114 In this study, we sought to establish a procedure to rapidly evaluate a large number  
115 of products for their sensitivity, using only a few samples and tests per product. For  
116 this we developed a strategy involving pooled samples and four different dilution  
117 steps from high to low viral loads, and generated several hundred aliquots thereof.  
118 Using this approach we then investigated 32 AgPOCTs, mainly tests currently in use  
119 in the local area (Heidelberg, Germany). We compared the results with data from the  
120 literature, which enabled us to draw conclusions on the validity of our approach and  
121 the performance of the products investigated.

## 122 **Methods**

### 123 **Study design**

124 We tested the analytical sensitivity of a large number of commercially available  
125 AgPOCTs by applying pooled samples from nasopharyngeal swabs with defined  
126 SARS-CoV2 viral loads including Ct16, Ct21, Ct25 and Ct28 ( $\sim 7.0 \cdot 10^8$  to  $\sim 1.7 \cdot 10^5$   
127 genome copies per ml) as well as a pooled sample obtained from SARS-CoV-2  
128 negative tested persons. Pools were generated using pseudo-anonymized remnant  
129 swab sample material that had been collected for clinical diagnosis of SARS-CoV-2  
130 infection by RT-qPCR carried out by the Center for Infectious Diseases, Virology,  
131 Heidelberg University Hospital, Germany. Pharyngeal swab specimens were  
132 collected through the nose (nasopharyngeal) and contained in viral transport medium  
133 (VTM). Per test, 50  $\mu$ l of the samples were mixed with the provided lysis buffer of  
134 each AgPOCT and the tests were performed according to the manufacturer's  
135 instructions. After the recommended incubation time, images of the test chambers  
136 were acquired using a Panasonic Lumix DMC-G70 camera equipped with a  
137 Panasonic H-FS12060 objective. AgPOCTs were tested at least in duplicates with  
138 the corresponding test samples. Test results were quantified by measuring the  
139 background corrected signal intensities of the test (T) band versus control (C) band in  
140 ImageJ (v1.53c) using the "Gels" analysis function usually used for quantification of  
141 Western Blot bands. For qualitative evaluation of the visibility of the test bands  
142 (positive versus negative score), RGB pictures of AgPOCT results from randomly  
143 chosen replicates were evaluated independently by three individuals in a blinded  
144 manner. Furthermore, all additional replicates of all AgPOCTs and test samples were  
145 scored independently by another person.

## 146 **Preparation of test samples from nasopharyngeal swabs**

147 Anonymized, remnant nasopharyngeal swab samples positively and negatively  
148 tested for SARS-CoV-2 were obtained between May and July 2021 from the the  
149 Center for Infectious Diseases, Virology, Heidelberg University Hospital, Germany.  
150 Samples were stored in VTM. The Ct16, Ct21 and negative test samples were  
151 prepared by pooling of 12-15 nasopharyngeal swab samples. Cell debris and other  
152 solids were removed by centrifugation at 400g for 10min and subsequent transfer of  
153 the supernatant into a new tube. Viral RNA was isolated from pools by manual lysis  
154 and automated RNA extraction using the QIAamp Viral RNA Mini kit (Qiagen) on a  
155 QIAcube Connect device (Qiagen). The cycle threshold (Ct) values of sample pools  
156 were determined by RT-qPCR analysis using the LightMix® Modular Sarbecovirus  
157 SARS-CoV-2 (TIB Molbiol) with the LightCycler® Multiplex RNA Virus Master  
158 (Roche) and LightCycler480 II (Roche). Subsequently, pools were supplemented with  
159 2 % TritonX-100 and c0mplete Ultra protease inhibitor (Roche) and if needed  
160 adjusted with dilution buffer [2 mg/ ml BSA, 0.9 % NaCl, protease inhibitor]. Ct25 and  
161 Ct28 test samples were prepared by dilution of the Ct21 test sample in the dilution  
162 buffer. Samples were aliquoted (120 µl), immediately frozen on dry ice and stored at -  
163 80°C. For AgPOCT testing, samples were freshly thawed on ice before use. Test  
164 samples were validated using the SARS-CoV-2 Antigen Test by LumiraDx.

165 **AgPOCTs evaluated in this study**

166 We included a total of 32 AgPOCTs available at local supermarkets, pharmacies and  
167 drugstores as well as on several online trade platforms (Table 1). Specific AgPOCTs  
168 will be referred to as the respective manufacturer's name (in bold in Table 1). The  
169 inspected AgPOCTs include both, tests for professional *in vitro* diagnostics use (#1-  
170 14) as well as tests temporarily licensed for self-testing in Germany (#15-32) by the  
171 Federal Institute for Drugs and Medical Devices (Bundesinstitut für Arzneimittel und  
172 Medizinprodukte (BfArM); Supplemental Figure S3). The majority of AgPOCTs  
173 available were nasal swab tests with the exception of BTNX, Ritter, Joinstar, Realy  
174 (#11-14) among the tests for professional use and Sanicom, Hygisun, fameditec  
175 (#30-32) among the self tests, which are all saliva spit tests, as well as Watmind  
176 (#29), which is a saliva swab test.

**Table 1: AgPOCTs investigated in this study.** For each AgPOCT supplier, name, reference and LOT number are indicated. If tests obtained a temporary license for self-testing in Germany the corresponding BfArM GZ number is given as well. In addition, sample type and professional (pro) versus layman (lay) use is indicated. In the last column the type of distributor where AgPOCTs were purchased is noted.

#	Supplier	AgPOCT name	Specifications	Sample type	Use	Distributor
1	<b>Abbott</b> Rapid Diagnostics Jena GmbH	Panbio COVID-19 Ag Rapid test device (nasal)	REF: 41FK11 LOT: 41ADG244A	Nasal swab	pro	Online trade
2	<b>Healgen</b> Scientific Limited Liability Company	Coronavirus Ag Rapid Test Cassette (Swab)	REF: GCCOV-502a LOT: 2012650	Nasopharyngeal swab	pro	Online trade
3	<b>RapiGEN</b> , INC.	Biocredit COVID-19 Ag – One step Rapid Test	REF: G61RHA20 LOT: H073097SD	Nasopharyngeal swab	pro	Online trade
4	Beijing <b>Beier</b> Bioengineering Co., Ltd	COVID-19 Antigen Rapid Test Kit	REF: not specified LOT: 20210201	Nasopharyngeal swab	pro	Online trade
5	<b>möLab</b> GmbH	mö-screen Testkit Corona Antigen	REF: 0230005B1 LOS: 2104072	Nasal/ Nasopharyngeal swab	pro	Online trade
6	<b>Biomerica</b> , Inc.	COVID-19 Antigen Rapid Test	REF: 1509A-25I LOT: COV6686	Nasopharyngeal swab	pro	Online trade
7	<b>Joysbio</b> (Tianjin) Biotechnology Co., Ltd	JOYSBIO SARS-CoV-2 Antigen Rapid Test Kit (Colloidal Gold)	REF: G10313 LOT: 2021011607	Nasopharyngeal swab	pro	Online trade



8	<b>Safecare</b> Biotech (Hangzhou) Co., Ltd	COVID-19 Antigen Rapid Test Kit (Swab)	REF: COV Ag-6012 LOT: COV21040606	Nasopharyngeal swab	pro	Online trade
9	Hangzhou <b>Testsea</b> Biotechnology Co., Ltd	Testsealabs COVID-19 Antigen Test Cassette	REF: 2020013 vB/10 LOT: TL1C05	Nasal swab	pro	Online trade
10	<b>ACON</b> Biotech (Hangzhou) Co., Ltd	Flowflex SARS-Cov-2-Antigen- Schnelltest (Selbsttest)	REF: L031-11855 LOT: COV1030052	Nasal swab	pro	Online trade
11	<b>BTNX</b> Inc.	Rapid Response COVID-19 Antigen Rapid Test Cassette	REF: COV-2C25B LOT: COVG21030089	Saliva (spit)	pro	Online trade
12	Joysbio (Tianjin) Biotechnology Co., Ltd/ <b>Ritter</b>	Easy Check Spit test SARS- CoV-2 Antigen Rapid Test Kit (Colloidal Gold)	REF: COV-AG-20/ G10313 LOT: 20210202	Saliva (spit)	pro	Online trade
13	<b>Joinstar</b> Biomedical Technology Co., Ltd.	COVID-19 Antigen Rapid Test (Latex)	REF: RPBH12360 LOT: COV2103002L	Saliva/ sputum (spit), stool	pro	Online trade
14	Hangzhou <b>Realy</b> Tech Co., Ltd	Novel Coronavirus (SARS- CoV-2) Antigen Rapid Test Device (Saliva)	REF: K590516D LOT: 202101022	Saliva (spit)	pro	Online trade
15	<b>nal von minden</b> GmbH	NADAL COVID-19 Ag Test	REF: 243103N-20H LOT: 175363 BfArM GZ: 5640-S-045/21	Nasal swab	lay	Online trade

16	<b>SD Biosensor</b>	SARS-CoV-2 Rapid Antigen Test	REF: 9901-NCOV-01G LOT: QCO390092I BfArM GZ: 5640-S-025/21	Nasal swab	lay	Online trade
17	Beijing <b>Hotgen</b> Biotech Co., Ltd	Coronavirus (2019-nCoV)-Antigentest	REF: 4260220532859 LOT: W2021032500/ W2021032602/ 1500 BfArM GZ: 5640-S-057/21	Nasal swab	lay	Supermarket Pharmacy
18	Guangzhou <b>Wondfo</b> Biotech Co., Ltd.	2019-nCoV Antigen Test (Lateral Flow Method)	REF: W634P0021 LOT: W634104116 BfArM GZ: 5640-S-179/21	Nasal swab	lay	Supermarket
19	<b>Teda</b> Laukoetter Technology GmbH	COVID-19 Antigen Schnelltest (kolloidales Gold) ANBIO Corona Antigen Nasentupfer	REF: A6061214 LOT: 2021046133/ 461310/036138 BfArM GZ: 5640-S-079/21	Nasal swab	lay	Drug store
20	Beijing <b>Lepu Medical</b> Technology Co., Ltd	NASOCHECKcomofort SARS-CoV-2 Antigen-Schnelltest	REF: CG2701N LOT: 21CG2720X/ 18X BfArM GZ: 5640-S-104/21	Nasal swab	lay	Drug store
21	Hangzhou <b>Clongene</b> Biotech Co., Ltd	COVID-19 Antigen Rapid Test	REF 6950921302636 LOT: 2021030161 BfArM GZ: 5640-S-168/21	Nasal swab	lay	Online trade
22	Hangzhou <b>Laihe</b> Biotech Co., Ltd	LYHER Novel Coronavirus (COVID-19) Antigen Test Kit (Colloidal Gold) NASAL	REF: 303036 LOT: 2103049/47/ 89-01 BfArM GZ: 5640-S-009/21	Nasal swab	lay	Pharmacy

23	<b>MP Biomedicals</b> Germany GmbH	Rapid SARS-Cov-2 Antigen Test Card	REF: 07AG6001BS LOT: 21033003 BrArM GZ: 5640-S-076/21	Nasal swab	lay	Supermarket
24	Xiamen <b>Boson</b> Biotech Co., Ltd	Rapid SARS-CoV-2 Antigen Test Card	REF: 1N40C5-4 LOT: 21040609 BfArM GZ: 5640-S-007/21	Nasal swab	lay	Supermarket
25	<b>NanoRepro</b> AG	VIROMED for the detection of SARS-Cov-2 from anterior nasal swab	REF: B60500 LOT: 20210401B BrArM GZ: 5640-S-096/21	Nasal swab	lay	Drug store
26	Anhui <b>Deepblue</b> Medical Technology Co., Ltd	COVID-19 (SARS-CoV-2) Antigentestkit (kolloidales Gold)	REF: SL030101N-5 LOT: ST210405 BfArM GZ: 5640-S-086/21	Nasal swab	lay	Online trade
27	<b>OFM</b> GmbH	Deni COVID-19 Antigen Test – Selbsttest für Zuhause	REF: OFM-LSYBT-NS-1 LOT: P202103003 BfArM GZ: 5640-S-140/21	Nasal swab	lay	Drug store
28	<b>Medice</b> Arzneimittel Pütter GmbH & Co. KG	Medicovid-AG SARS-CoV-2 Antigen Selbsttest 5 NASE	REF: 1N40C5-4 LOT: 21041002 BfArM GZ: 5640-S-128/21	Nasal swab	lay	Online trade
29	Shenzhen <b>Watmind</b> Medical Co., Ltd	SARS-CoV-2 Antigen Schnelltest zur Eigenanwendung (kolloidales Gold)	REF: LFA0401-5N LOT: 21040904/ 21040704 BfArM GZ: 5640-032/21	Saliva (swab)	lay	Supermarket

30	MR <b>Sanicom</b> GmbH	COVID-19 Antigen Schnelltest zur Eigenanwendung (Speichel-/ Spucktest)	Barcode no: 4260729310002 LOT: CAG2104021G BfArM GZ: 5640-S-147/21	Saliva (spit)	lay	Drug store
31	<b>Hygisun</b> Anbio (Xiamen) Biotechnology Co., Ltd.	COVID-19 Antigen Schnelltest (kolloidales Gold)	REF: A6061213 LOT: 2021046132/ 2021036136/ 2021036137 BfArM GZ: 5640-S-058/21	Saliva (spit)	lay	Drug store
32	<b>fameditec</b>	CORA Check-19 Comfort	REF: K590516D/ LOT: 2021022019 BfArM GZ: 5640-S-154/21	Saliva (collected with sponge)	lay	Online trade

## 177 **Results**

### 178 **Generation of test samples for standardized AgPOCT evaluation**

179 In the present study, we sought to establish a standardized procedure to rapidly  
180 assess the sensitivities of a large number of SARS-COV-2 AgPOCTs. To this end,  
181 we generated a collection of test samples from pooled nasopharyngeal swabs from  
182 SARS-CoV-2 positive tested and negative tested individuals. Ct values of the SARS-  
183 CoV-2 positive pools were determined by RT-qPCR and test samples were prepared  
184 accordingly. The test sample collection comprised four SARS-CoV-2 positive pools  
185 with defined viral loads (Ct16, Ct21, Ct25, Ct28) and one SARS-CoV-2 negative pool.  
186 Per test sample, >200 aliquots with 120 µl sample volume each were prepared,  
187 allowing a quick and standardized evaluation of the analytical sensitivities of a large  
188 number of different AgPOCTs.

189 We estimated that our test sample collection covers a range from  $\sim 7.0 \times 10^8$  (Ct=16) to  
190  $\sim 1.7 \times 10^5$  (Ct=28) SARS-CoV-2 genome copies per ml (Supplemental Table S4). We  
191 qualitatively validated our test sample collection using the LumiraDx SARS-CoV-2 Ag  
192 Test device, which was shown to have a high analytical sensitivity (Krüger *et al.*,  
193 2021). We used 50 µl of test sample for the LumiraDx analysis as well as for all  
194 AgPOCTs evaluated in this study, as described before (Corman *et al.*, 2021;  
195 Puyskens *et al.*, 2021). All four SARS-CoV-2 positive test samples tested positive for  
196 SARS-CoV-2, while the negative test sample was recognized as negative in the  
197 LumiraDx analysis.

## 198 **Quantitative and qualitative assessment of AgPOCT analytical sensitivity**

199 We tested a total of 32 AgPOCTs (Table 1). 12 AgPOCTd were purchased from local  
200 resellers (pharmacies, drugstores, supermarkets). Another 20 tests were purchased  
201 online. We performed the tests over 10 days, with the help of four students, during  
202 the course of four weeks. Freshly thawed aliquots of the Ct21, Ct25, and Ct28 test  
203 samples as well as the negative sample were used. We conducted two to four  
204 replicates per product, and acquired images of each of the tests at the time points  
205 specified by the manufacturers. The Ct16 test sample was only used for AgPOCTs  
206 that had low performance with the Ct21 test sample. For quantitative evaluation,  
207 signal intensities of the test and the control bands were measured and the ratio of  
208 these values (T/C ratio) was determined (Figure 1A). In addition, we scored a binary  
209 (positive or negative) test result using visual inspection of the images by four different  
210 persons (Figure 1B).

211 For 31 of 32 investigated AgPOCTs, an average  $T/C_{Ct25} > 0$  was determined for all  
212 virus-containing samples and not for the negative control sample (Figure 1A). This  
213 indicates that the digital quantification detects test band signals for 31 AgPOCTs  
214 using the Ct25 test sample, albeit sometimes with extremely weak signal intensities.  
215 Only for Jointstar, one replicate of the negative test sample resulted in a false-  
216 positive test band indicated by a  $T/C_{Neg.} > 0$ . In contrast to the more sensitive digital  
217 quantification, visual inspection did only score a positive result for 28 of 31 AgPOCTs  
218 with a  $T/C_{Ct25} > 0$ . This also holds true for the visual assessment of the results of  
219 technical replicates, e.g. for Jointstar, the negative sample with a  $T/C_{Neg.} > 0$  scored  
220 negative in the visual inspection. We could not establish a specific T/C value  
221 threshold to explain the results of the visual assessment, indicating that these ratios  
222 are AgPOCT-specific. This can be explained by different dyes and dye-systems, and

223 by the fact that the visual assessment was conducted using color vision, while for T/C  
224 quantification grayscale images were used. We also observed a large coefficient of  
225 variation for some of the tests, in particular for samples with very small T/C ratios,  
226 emphasizing weak signals close to the detection limit of the digital quantification  
227 (Supplemental Figure S1).

228 We grouped the tested AgPOCT into categories with low (Group III), medium (Group  
229 II) and high (Group I) sensitivity based on the reliability to detect a given SARS-CoV-  
230 2 positive sample. A sample was considered reliably detected by a given AgPOCT  
231 when all or the majority of replicates (at least two out of three or three out of four  
232 replicates) of a given sample were scored positive. If none or the minority of  
233 replicates of a given sample was detected by the corresponding AgPOCT, reliability  
234 requirements were not met.

235 One exception was Lepu Medical, which did not fulfill the requirements for any of  
236 these groups. For Group III with lowest sensitivity the minimum criterion was to  
237 reliably detect the Ct21 sample and Lepu medical did not even reliably score positive  
238 with the Ct16 sample ( $\sim 7.0 \cdot 10^8$  copies/ ml). To investigate this product further and  
239 exclude a possible interference of the components in the dilution buffer with AgPOCT  
240 performance we used individual unprocessed nasal/ nasopharyngeal swab samples  
241 in comparison to the Ct16 test sample (pool) on this AgPOCT. Ct values of  
242 unprocessed samples ranged from Ct13,3 to Ct18,4. Comparison of the  
243 corresponding results obtained for the Ct16 test sample to results obtained for  
244 unprocessed samples confirmed that components of the dilution buffer do not impact  
245 on AgPOCT performance compared to unprocessed samples in VTM (Supplemental  
246 Figure S2). As unprocessed samples with higher viral loads (Ct $\sim$ 13) induced more  
247 visible test bands with Lepu medical (Supplemental Figure S2A), this product does

248 not seem completely non-functional, but rather largely insensitive.  
249 AgPOCTs in Group III only reliably detected the Ct21 sample ( $\sim 2.2 \times 10^7$  copies/ml)  
250 and include Hygisun, Joinstar and Ritter. Of note is that all of them are saliva based  
251 spit tests (Table 1), which are provided with a considerably larger amount of lysis  
252 buffer (500-1000  $\mu$ l lysis buffer; Figure 1C) than most other AgPOCTs resulting in an  
253 increased dilution of the sample compared to tests for nasal samples, which are  
254 provided on average with 320  $\mu$ l lysis buffer (Figure 1C). Therefore, their low  
255 performance in this AgPOCT evaluation study needs to be interpreted with caution.  
256 The large majority of the investigated AgPOCTs (23 out of 32) delivered visible  
257 positive results with the Ct25 sample ( $\sim 1.4 \times 10^6$  copies/ml, Group II). Among these  
258 23 AgPOCTs, positive scoring was fully reproducible in all replicates for 17  
259 AgPOCTs. AgPOCTs intended for professional use (sorted ascending according to  
260 T/C<sub>Ct25</sub>: Safecare, Realy, Healgen, ACON, Beier, Testsea, BTNX and Biomerica)  
261 largely cluster in the upper half of the T/C<sub>Ct25</sub> ranking, while tests licensed for self-  
262 testing largely cluster in the lower half (sorted ascending according to T/C<sub>Ct25</sub>:  
263 Sanicom, fameditec, OFM, Deepblue, NanoRepro, nal von minden, Teda, Laihe and  
264 Boson). Interestingly, among both tests for professional and for layman use, saliva  
265 spit tests (Realy, Sanicom, fameditec) appear largely inferior compared to nasal  
266 swab tests with the exception of BTNX, which is the sixth highest ranked AgPOCT  
267 among all investigated tests. Six AgPOCTs in Group II (sorted ascending according  
268 to T/C<sub>Ct25</sub>: Joysbio, RapiGEN, Hotgen, SD Biosensor, Abbott and Wondfo) failed in  
269 one out of three to four replicates to detect the Ct25 sample, which is represented by  
270 a large coefficient of variation (Supplemental Figure S1).  
271 Using the Ct28 test sample ( $\sim 1.7 \times 10^5$  copies/ml), 14 out of 32 AgPOCTs yielded a  
272 T/C<sub>Ct28</sub>>0, however, only five reliably scored positive in the visual investigation  
273 (Group I). These include (sorted in ascending order according to T/C<sub>Ct25</sub>) möLab,



274 Medice, MP, Clongene and Watmind, three of which are temporarily licensed for self-  
275 testing (Table 1, Supplemental Figure S3). All, except möLäb delivered a positive  
276 visual result in all three replicates.

277 Taken together, the data presented here demonstrate that the different SARS-CoV-2  
278 AgPOCTs available deviate largely in the analytical sensitivity of the lateral flow test  
279 stripes and provided buffer systems, corresponding more than two orders of  
280 magnitude of viral genome copies per ml ( $7.0 \cdot 10^8$  to  $1.7 \cdot 10^5$  ).

281

## 282 **Discussion**

283 We developed a straight-forward strategy to evaluate the technical sensitivity of  
284 AgPOCTs for SARS-CoV-2. Using a set of four SARS-CoV-2 positive reference  
285 samples spanning the relevant dynamic range of the typical sensitivity of AgPOCTs  
286 ( $\sim 1.7 \cdot 10^5$  to  $\sim 2.2 \cdot 10^7$  SARS-CoV-2 genome copies per ml) we were able to group 32  
287 commercially available products into AgPOCT groups with high, average and low  
288 sensitivity (Group I-III). Most importantly, we identified one product that did not detect  
289 any of the test samples and therefore is considered not suitable for SARS-CoV-2  
290 diagnostics.

291 The majority of tests investigated in this study reliably detected the Ct25 test sample  
292 as SARS-CoV-2 positive (Group II). Some of these AgPOCTs have been thoroughly  
293 characterized, including Abbott, RapiGEN, Healgen, nal von minden and SD  
294 Biosensor by Corman and colleagues (Corman *et al.*, 2021) among others (Strömer  
295 *et al.*, 2021; Stokes *et al.*, 2021; Merino *et al.*, 2021; Schildgen *et al.*, 2021;  
296 Seynaeve *et al.*, 2021; Nordgren *et al.*; Puyskens *et al.*, 2021; Scheiblaue *et al.*,  
297 2021; Kohmer *et al.*, 2021; Wagenhäuser *et al.*, 2021; Berger *et al.*, 2021;

298 Jegerlehner *et al.*, 2021; Iglò *et al.*, 2021; Bekliz *et al.*, 2021; Cubas-Atienzar *et al.*,  
299 2021, Haage *et al.*, 2021 and more). Corman and colleagues determined 95% limits  
300 of detection for each AgPOCT using 138 SARS-CoV-2 positive clinical samples with  
301 viral loads ranging from  $1.9 \cdot 10^4$  to  $1.8 \cdot 10^9$  genome copies per ml. Among the  
302 AgPOCTs also tested in this study, Healgen was found to be most sensitive closely  
303 followed by Abbott, SD Biosensor and nal von minden - all with a 95% limit of  
304 detection between  $2.3 - 9.3 \cdot 10^6$  SARS-COV-2 genomes per swab. In contrast, for  
305 RapiGEN a 95% limit of detection more than three orders of magnitudes lower was  
306 found. This discrepancy in performance between RapiGEN and the above mentioned  
307 products is supported by other studies (Brümmer *et al.*, 2021). In our analysis, this  
308 trend is also reflected even though we cannot resolve the limits of detection in such  
309 great detail: For Healgen and nal von minden, detection of the Ct25 sample  
310 ( $\sim 1.4 \cdot 10^6$  copies/ ml) was robust with all replicates being positively scored. For  
311 RapiGEN, Ct25 test sample detection was less reliable and based on the  $T/C_{Ct25}$ , this  
312 product is ranked in the lowest quarter among all AgPOCTs investigated.

313 Among the 32 investigated AgPOCTs, we identified four reliably well performing  
314 AgPOCTs, which detected the Ct28 sample ( $\sim 1.7 \cdot 10^5$  copies/ ml) as SARS-CoV-2  
315 positive in all replicates (Group I). These include in ascending order (based on  
316  $T/C_{Ct25}$ ) Medice, MP, Clongene and Watmind. The latter represents the test winner in  
317 our study and is also among the best three AgPOCTs out of 122 tested products with  
318 a sensitivity of 82 % in samples with Ct values ranging from 17 to 35 corresponding  
319 to viral loads of  $>10^8$  to  $10^3$  SARS-CoV-2 genome copies per ml (Scheiblauer *et al.*,  
320 2021).

321 Group III includes AgPOCTs with low performance as these only detected the Ct21  
322 test sample as SARS-CoV-2 positive. For Joinstar, using Latex beads for

323 visualisation, evidence provided by Scheiblaue and colleagues (2021) suggests that  
324 this test is non-functional with 0% sensitivity for all sample panels supporting the low  
325 ranking of Joinstar in this study. In our analysis we detected very weak bands for the  
326 Ct21 and Ct16 test samples, however, these were considerably weaker than for all  
327 other tests suggesting the possibility that latex beads used for visualisation do fail to  
328 produce a strong signal. Besides Joinstar, Ritter and Hygisun, both saliva spit tests  
329 similar to Joinstar, also showed low sensitivity in our studies. While we could not find  
330 independent evaluation studies for these products, both can be found on the BfArM  
331 list (as of July 23, 2021; Supplemental Figure S3). Among the low ranked AgPOCTs,  
332 the sensitivity of Lepu medical was exceptionally low as this AgPOCT failed to deliver  
333 a visible positive test result in most replicates, even for the Ct16 sample. In addition  
334 to its poor performance in SARS-CoV-2 diagnostics, out of 20 performed Lepu  
335 medical tests three tests technically failed, indicated by the absence of the control  
336 band. Importantly, this last test is a very popular product in the area where this study  
337 was conducted, available at many drugstores and supermarket chains. Of note is  
338 also that Lepu medical differs from other AgPOCTs in its design and sample  
339 application. Technical failure did not occur in any of the other AgPOCTs, in which the  
340 immunochromatography paper is embedded in the common plastic cassettes.

341 Taken together, comparison with published data for some of the investigated  
342 products confirmed our results. Therefore, we provide evidence that a rapid  
343 assessment of the sensitivity of SARS-CoV-2 AgPOCTs is feasible.

344 It is important to mention that the volume of the lysis buffer provided with each  
345 AgPOCT varies between tests of different manufacturers resulting in a 2.6- to 20-fold  
346 dilution of the test samples during the procedure (Figure 1C). In this study, test  
347 results were not corrected for these different dilution factors, because the sample

348 dilution is an internal property of each test. Additionally, it is important to note that by  
349 using the same sample volume for each AgPOCT potential differences in swab  
350 properties, such as absorption volume, which affect the diagnostic sensitivity of  
351 AgPOCTs, are neglected. However, we note that for tests based on nasal swabs the  
352 used volume of 50 ul approximates the quantity absorbed by these swabs (Corman  
353 *et al.*, 2021). Furthermore, there are AgPOCT-specific instructions for self-sampling,  
354 which can also influence the diagnostic sensitivity of a test. In light of these  
355 considerations we want to emphasize that this evaluation method only and  
356 exclusively focuses on comparing the technical sensitivity of the lateral flow test  
357 strips from different test manufacturers, in combination with the provided lysis  
358 buffers.

359 Currently, there are more than 500 different products available for SARS-CoV-2  
360 diagnostics, many of which lack independent assessment of their performance. In  
361 most cases the clinical sensitivity values provided by the manufacturer (e.g. in Figure  
362 1C) are far >90%, however, detailed information on the used specimen collection and  
363 viral loads are usually not provided rendering these values largely inconclusive.  
364 Considering that individual products use different antibodies in varying amounts with  
365 different specificities and affinities sometimes recognizing different proteins in the  
366 viral particle with differing abundances, and diverse staining methods, these  
367 conspicuously similar values for clinical sensitivity given by the manufacturer are also  
368 unlikely. Therefore, an independent, rapid and critical evaluation of AgPOCTs  
369 available is required in order to determine the realistic performance of AgPOCT and  
370 especially to identify poor performing products. Given the huge number of products  
371 available for rapid SARS-CoV-2 diagnostics, in-depth studies evaluating the quality of  
372 AgPOCTs in a time-intensive procedure will not be available any time soon for all  
373 products available. Here we identify a non-functional product (Lepu medical) for

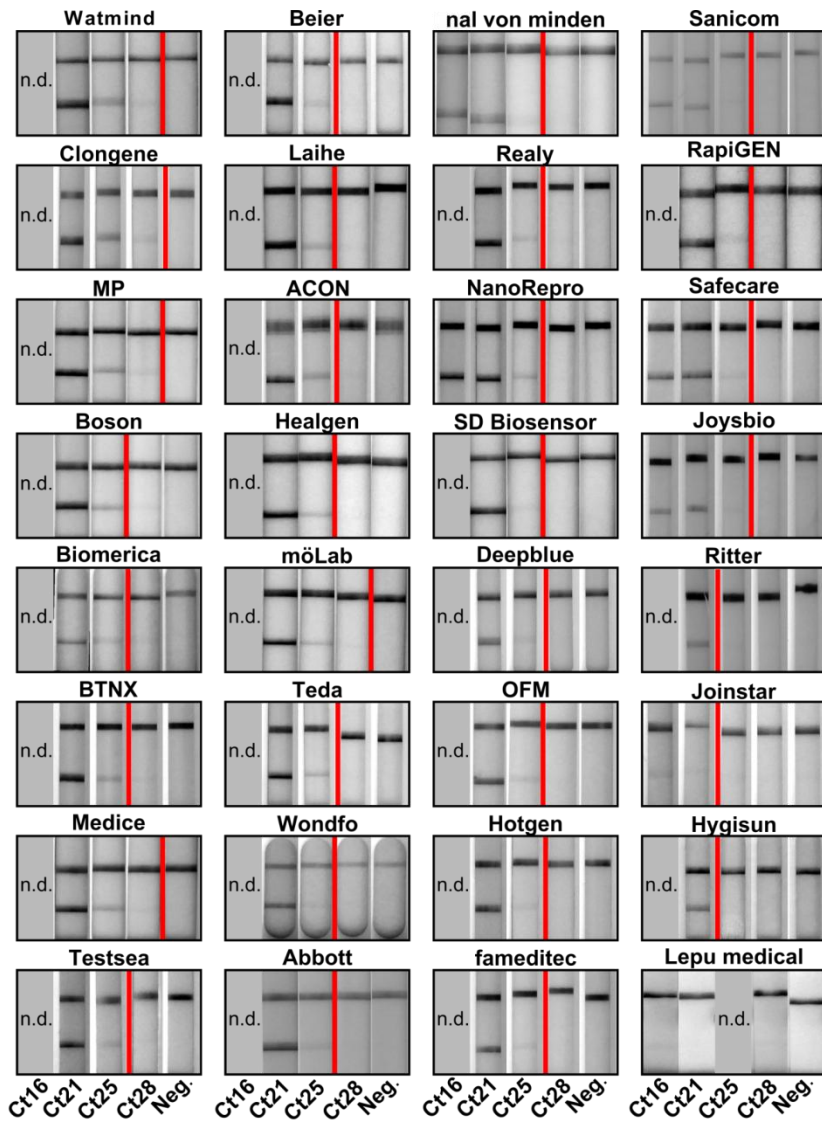
374 SARS-CoV-2 diagnostics, which was and still is (as of July 26, 2021) widely present  
375 in the region of Heidelberg, Germany, emphasizing the urgent need for AgPOCT  
376 products to undergo better and especially faster producer-independent quality  
377 control. The procedure presented here involving a reduced test sample collection and  
378 minimal labor represents a feasible strategy for prompt evaluation of available  
379 AgPOCTs for their usability in SARS-CoV-2 diagnostics. We provide a useful  
380 estimation of the limits of detection for the investigated AgPOCTs as the dimensions  
381 and trends are comparable to results from much more laborious in-depth studies.  
382 Therefore, we suggest this procedure as a rapid alternative to investigate Covid-19  
383 AgPOCs in the absence of reliable data that validate the performance of a specific  
384 product.

A	Means of T/C ratios					B	Pos. scores/ replicas					C	Additional information			
	Ct16	Ct21	Ct25	Ct28	Neg.		Ct16	Ct21	Ct25	Ct28	Neg.		n	Sensitivity	Lysis buffer [µl]	Dil. factor
Watmind	n.d.	1,81	0,51	0,08	0,00	n.d.	3/3	4/4	3/3	0/2	2-4	90,45	300	6		
Clongene	n.d.	1,38	0,48	0,10	0,00	n.d.	3/3	4/4	4/4	0/3	3-4	91,4	300	6		
MP	n.d.	1,08	0,28	0,04	0,00	n.d.	3/3	3/3	3/3	0/2	2-3	96,19	250	5		
Boson	n.d.	1,05	0,22	0,02	0,00	n.d.	3/3	5/5	1/2	0/2	2-5	96,19	200	4		
Biomerica	n.d.	0,78	0,22	0,06	0,00	n.d.	3/3	3/3	1/3	0/3	3	94,7	300	6		
BTNX	n.d.	1,04	0,21	0,01	0,00	n.d.	3/3	3/3	0/3	0/3	3	90,6	300	6		
Medice	n.d.	0,92	0,20	0,03	0,00	n.d.	2/2	2/2	2/2	0/2	2	96,19	250	5		
Testsea	n.d.	0,79	0,16	0,01	0,00	n.d.	3/3	3/3	0/3	0/3	3	97,6	300	6		
Beier	n.d.	1,75	0,15	0,00	0,00	n.d.	2/2	2/2	0/2	0/2	2	96,5	450	9		
Laihe	n.d.	1,03	0,15	0,01	0,00	n.d.	3/3	4/4	1/3	0/2	2-4	95	300	6		
ACON	n.d.	0,94	0,15	0,02	0,00	n.d.	3/3	3/3	1/3	0/3	3	97,1	350	7		
Healgen	n.d.	0,93	0,13	0,01	0,00	n.d.	4/4	4/4	1/3	0/4	3-4	96,72	300	6		
möLab	n.d.	0,76	0,12	0,02	0,00	n.d.	2/2	3/3	2/3	0/2	2-3	97,25	300	6		
Teda	n.d.	0,87	0,12	0,00	0,00	n.d.	4/4	4/4	0/3	0/4	3-4	93,87	350	7		
Wondfo	n.d.	0,98	0,11	0,00	0,00	n.d.	2/2	2/3	0/2	0/2	2-3	97,83	400	8		
Abbott	n.d.	1,20	0,09	0,00	0,00	n.d.	4/4	3/4	0/3	0/4	3-4	98,1	300	6		
nal von minden	0,48	0,50	0,09	0,01	0,00	2/2	4/4	4/4	0/3	0/4	2-4	94,1	350	7		
Realy	n.d.	0,89	0,09	0,01	0,00	n.d.	2/2	3/3	0/3	0/2	2-3	92,9	130	2,6		
NanoRepro	0,77	0,56	0,08	0,00	0,00	2/2	3/3	3/3	0/3	0/2	2-4	97,33	500	10		
SD Biosensor	n.d.	1,12	0,07	0,00	0,00	n.d.	4/4	3/4	0/3	0/4	3-4	83,3	300	6		
Deepblue	n.d.	0,67	0,07	0,00	0,00	n.d.	2/2	3/3	0/3	0/2	2-3	96,4	300	6		
OFM	n.d.	0,92	0,07	0,00	0,00	n.d.	3/3	3/3	0/3	0/2	2-3	96,8	400	8		
Hotgen	n.d.	0,68	0,06	0,00	0,00	n.d.	3/3	3/4	0/3	0/3	3-4	95,37	300	6		
fameditec	n.d.	0,51	0,06	0,00	0,00	n.d.	3/3	3/3	0/2	0/2	2-3	96,3	250	5		
Sanicom	1,10	0,63	0,06	0,00	0,00	2/2	3/3	3/3	0/3	0/2	2-4	96,1	1000	20		
RapiGEN	n.d.	0,99	0,05	0,00	0,00	n.d.	3/3	2/3	0/3	0/3	3	96	350	7		
Safecare	0,52	0,43	0,05	0,00	0,00	3/3	3/3	3/3	0/3	0/3	3	97,04	350	7		
Joysbio	0,30	0,31	0,03	0,00	0,00	2/2	3/3	2/3	0/3	0/3	2-3	98,13	350	7		
Ritter	n.d.	0,16	0,02	0,00	0,00	n.d.	2/2	0/3	0/3	0/2	2-3	95,1	500	10		
Joinstar	0,10	0,09	0,02	0,00	0,01	2/2	3/3	1/3	0/3	0/3	2-3	92,2	1000	20		
Hygisun	n.d.	0,36	0,01	0,00	0,00	n.d.	3/3	1/3	0/3	0/3	3	98,94	1000	20		
Lepu Medical	0,07	0,00	0,00	n.d.	0,00	3/7	1/8	0/1	n.d.	0/2	1-8	95,06	150	3		

**Figure 1: Quantitative and qualitative evaluation of 32 SARS-CoV-2 AgPOCTs in a rapid sensitivity assessment approach.** (A) Investigated AgPOCT are listed with the means of T/C ratios (test band (T) intensity to control (C) band intensity) for each Ct test sample. T/C ratios are color-coded in shades of red (highest values with most intensive red). Blue color highlights zeros indicating the absence of measurable signal at the test band position. Ct16 test sample was only used on AgPOCTs with exceptionally low performance in detection of the Ct21 sample. AgPOCTs are ranked according to their T/C<sub>Ct25</sub> ratio. (B) Scoring results of visual inspection for all replicates. Full reproducibility of positive scores in all replicates is highlighted in green, positive scores in the majority of replicates in yellow, positive scores in the minority of replicates in orange and no positive scores in any replicate is light red. n.d. = not determined (grey). Double line indicates the limit of reliable detection of SARS-CoV-2 positive samples (reliability defined by reproducibility of positive scores in all or

most replicates of a given Ct test sample). (C) Additional information on investigated AgPOCTs: Sensitivities of AgPOCTs according to the corresponding manufacturer's package insert, volumes of provided lysis buffer and the resulting dilution factor for the Ct test samples ( $V = 50 \mu\text{l}$ ) are given.





**Figure 2: Representative images of SARS-CoV-2 AgPOCTs lateral flow test stripes treated with corresponding Ct test samples.** Contrast settings were optimized for each AgPOCT example image set in order to ensure best visibility of the test bands. AgPOCT example images are arranged (from left top to right bottom) according to the ranking presented in Figure 1. Red line indicates the limit of reliable detection (see Figure 1A, B).



## 386 References

- 387 **Bekliz**, M., Adea, K., Essaidi-Laziosi, M., Sacks, J. A., Escadafal, C., Kaiser, L., &  
388 Eckerle, I. (2021). Analytical comparison of nine SARS-CoV-2 antigen-detecting  
389 rapid diagnostic tests for emerging SARS-CoV-2 variants. *MedRxiv*, 114(June),  
390 e00146. Retrieved from <https://doi.org/10.1016/j.sciaf.2019.e00146>
- 391 **Berger**, A., Nsoga, M. T. N., Perez-Rodriguez, F. J., Aad, Y. A., Sattonnet-Roche, P.,  
392 Gayet-Ageron, A., ... Eckerle, I. (2021). Diagnostic accuracy of two commercial  
393 SARSCoV- 2 antigen-detecting rapid tests at the point of care in community-based  
394 testing centers. *PLoS ONE*, 16(3 March 2021), 1–12.  
395 <https://doi.org/10.1371/journal.pone.0248921>
- 396 **Brümmer**, L. E., Katzenschlager, S., Gaeddert, M., Erdmann, C., Schmitz, S., Bota,  
397 M., ... Denkinger, C. M. (2021). The accuracy of novel antigen rapid diagnostics for  
398 SARS-CoV-2: a living systematic review and meta-analysis. *MedRxiv*,  
399 2021.02.26.21252546. Retrieved from <https://doi.org/10.1101/2021.02.26.21252546>
- 400 **Corman**, V. M., Haage, V. C., Bleicker, T., Schmidt, M. L., Mühlemann, B.,  
401 Zuchowski, M., ... Drosten, C. (2021). Comparison of seven commercial SARS-CoV-  
402 2 rapid point-of-care antigen tests: a single-centre laboratory evaluation study. *The*  
403 *Lancet Microbe*, 5247(21), 1–9. [https://doi.org/10.1016/S2666-5247\(21\)00056-2](https://doi.org/10.1016/S2666-5247(21)00056-2)
- 404 **Cubas-Atienzar**, A. I., Kontogianni, K., Edwards, T., Buist, K., Thompson, C. R.,  
405 Williams, C. T., ... Adams, R. (2021). Limit of detection in different matrices of  
406 nineteen commercially available rapid antigen tests for the detection of SARS-CoV-2  
407 Liverpool School of Tropical Medicine , Centre for Drugs and Diagnostics , Liverpool ,  
408 L3 5QA , UK Liverpool School of Tropical. Retrieved from  
409 <https://www.medrxiv.org/content/10.1101/2021.03.19.21253950v1.full.pdf>
- 410 **Dinnes**, J., Deeks, J. J., Adriano, A., Berhane, S., Davenport, C., Dittrich, S., ... Van  
411 den Bruel, A. (2020). Rapid, point-of-care antigen and molecular-based tests for  
412 diagnosis of SARS-CoV-2 infection. *Cochrane Database of Systematic Reviews*,  
413 2020(8). <https://doi.org/10.1002/14651858.CD013705>
- 414 **Federal Institute for Drugs and Medical Devices** (Bundesinstitut für Arzneimittel  
415 und Medizinprodukte (BfArM)). Antigen-Tests zum direkten Erregernachweis des  
416 Coronavirus.  
417 <https://antigentest.bfarm.de/ords/f?p=110:100:16622641307467:::~&tz=2:00>
- 418 **Iglò**, Z., Velzing, J., Van Beek, J., Van de Vijver, D., Aron, G., Ensing, R., ...  
419 Molenkamp, R. (2021). Clinical evaluation of roche sd biosensor rapid antigen test for  
420 sars-cov-2 in municipal health service testing site, the netherlands. *Emerging*  
421 *Infectious Diseases*, 27(5), 1323–1329. <https://doi.org/10.3201/eid2705.204688>
- 422 **Jegerlehner**, S., Suter-riniker, F., Jent, P., Bittel, P., & Nagler, M. (2021). Diagnostic  
423 accuracy of a SARS-CoV-2 rapid antigen test in real-life clinical settings. *International*  
424 *Journal of Infectious Diseases*, 109, 118–122.  
425 <https://doi.org/10.1016/j.ijid.2021.07.010>

- 426 **Kohmer**, N., Toptan, T., Pallas, C., Karaca, O., Pfeiffer, A., Westhaus, S., ...  
427 Rabenau, H. F. (2021). The Comparative Clinical Performance of Four SARS-CoV-2  
428 Rapid Antigen Tests and Their Correlation to Infectivity In Vitro. *Journal of Clinical*  
429 *Medicine*, 10(2), 328. <https://doi.org/10.3390/jcm10020328>
- 430 **Krüger**, L. J., Klein, J. A. F., Tobian, F., Gaeddert, M., Lainati, F., Klemm, S., ...  
431 Jones, T. C. (2021). Evaluation of accuracy, exclusivity, limit-of-detection and ease-  
432 of-use of LumiraDx™ Antigen-detecting point-of-care device for SARS-CoV-2.  
433 *MedRxiv*, 1–37.
- 434 **Merino**, P., Guinea, J., Munoz-Gallego, I., González-Donapetry, P., Galán, J. C.,  
435 Antona, N., ... Group, the S. P. T. C.-19 validation. (2021). Multicenter evaluation of  
436 the Panbio™ COVID-19 rapid antigen- detection test for the diagnosis of SARS-  
437 CoV-2 infection. *Clinical Microbiology and Infection*, 27(January), 758–761.
- 438 **Nordgren**, J., Sharma, S., Olsson, H., Jämtberg, M., Falkeborn, T., Svensson, L., &  
439 Hagbom, M. (2021). SARS-CoV-2 rapid antigen test : High sensitivity to detect  
440 infectious virus. *Journal of Clinical Virology*, 140(January).
- 441 **Paul Ehrlich Institute** (PEI), Federal Institute for Vaccines and Biomedicines (12  
442 July, 2021). Vergleichende Evaluierung der Sensitivität von SARS-CoV-2  
443 Antigenschnelltests.  
444 [https://www.pei.de/SharedDocs/Downloads/DE/newsroom/dossiers/evaluierung-](https://www.pei.de/SharedDocs/Downloads/DE/newsroom/dossiers/evaluierung-sensitivitaet-sars-cov-2-antigentests-04-12-2020.pdf?__blob=publicationFile&v=48)  
445 [sensitivitaet-sars-cov-2-antigentests-04-12-2020.pdf?\\_\\_blob=publicationFile&v=48](https://www.pei.de/SharedDocs/Downloads/DE/newsroom/dossiers/evaluierung-sensitivitaet-sars-cov-2-antigentests-04-12-2020.pdf?__blob=publicationFile&v=48)
- 446 **Puyskens**, A., Krause, E., Michel, J., Nübling, M., Scheiblaue, H., Bourquain, D., ...  
447 Nitsche, A. (2021). Establishment of an evaluation panel for the decentralized  
448 technical evaluation of the sensitivity of 31 rapid detection tests for SARS-CoV-2  
449 diagnostics. *MedRxiv*.
- 450 **Scheiblaue**, H., Filomena, A., Nitsche, A., Puyskens, A., Corman, V. M., Drosten,  
451 C., ... Nübling, C. M. (2021). Comparative sensitivity evaluation for 122 CE-marked  
452 SARS-CoV-2 antigen rapid tests. *MedRxiv*, 2021.05.11.21257016. Retrieved from  
453 <http://medrxiv.org/content/early/2021/05/12/2021.05.11.21257016.abstract>
- 454 **Schildgen**, V., Demuth, S., Lüsebrink, J., & Schildgen, O. (2021). Limits and  
455 opportunities of sars-cov-2 antigen rapid tests: An experienced-based perspective.  
456 *Pathogens*, 10(1), 1–7. <https://doi.org/10.3390/pathogens10010038>
- 457 **Seynaeve**, Y., Heylen, J., Fontaine, C., Maclot, F., Meex, C., Diep, A. N., ... Descy,  
458 J. (2021). Evaluation of Two Rapid Antigenic Tests for the Detection of SARS-CoV-2  
459 in Nasopharyngeal Swabs. *Journal of Clinical Medicine*, (M), 1–9.
- 460 **Stokes**, W., Berenger, B. M., Portnoy, D., Scott, B., Szelewicki, J., Singh, T., ...  
461 Tipples, G. (2021). Clinical performance of the Abbott Panbio with nasopharyngeal,  
462 throat, and saliva swabs among symptomatic individuals with COVID-19. *European*  
463 *Journal of Clinical Microbiology and Infectious Diseases*, 3–8.  
464 <https://doi.org/10.1007/s10096-021-04202-9>
- 465 **Strömer**, A., Rose, R., Schäfer, M., Schön, F., Vollersen, A., Lorentz, T., ...  
466 Krumbholz, A. (2021). Performance of a point-of-care test for the rapid detection of

- 467 sars-cov-2 antigen. *Microorganisms*, 9(1), 1–11.  
468 <https://doi.org/10.3390/microorganisms9010058>
- 469 **Wagenhäuser**, I., Knies, K., Rauschenberger, V., Eisenmann, M., McDonogh, M.,  
470 Petri, N., ... Krone, M. (2021). Clinical performance evaluation of SARS-CoV-2 rapid  
471 antigen testing in point of care usage in comparison to RT-qPCR. *EBioMedicine*, 69,  
472 103455. <https://doi.org/10.1016/j.ebiom.2021.103455>
- 473 **World Health Organization** (WHO; 11 September 2020). Antigen-detection in the  
474 diagnosis of SARS-CoV-2 infection using rapid immunoassays: Interim guidance.  
475 [WHO/2019-nCoV/Antigen\\_Detection/2020](https://www.who.int/publications/i/item/WHO/2019-nCoV/Antigen_Detection/2020).

476 **Acknowledgements**

477 We thank Helena Kettern, Vincent T. Jaschinski and Larissa Karl for their flexible  
478 help with AgPOCT image acquisition. Furthermore, we thank M. Krogemann for help  
479 with AgPOCT result scoring. Additionally, we thank M. Meurer for helpful discussions.