

# Identification and functional characterisation of a rare *MTTP* variant underlying hereditary non-alcoholic fatty liver disease.

Grove, J.I. et al.

Supporting Information

Supplemental Methods

## Table of Primers Used:

Variant	Primer Pair
rs745447480	<i>MTTP</i> -F1: 5'- TCTTAACGGCCTCAGCCTAG <i>MTTP</i> -R1: 5'- CAGAGTTACCAGTCATGGACTC
rs1800591	<i>MTTP</i> -F2: 5'- GGCTTGCTAGTGTGCTAATGACAG <i>MTTP</i> -R2: 5'- GAGTGACCCTCTTCAGAACCTGC
rs2306986 and rs3816873	<i>MTTP</i> -F5: 5'- AAGGTAGAATAGGGCAGGGGTCC <i>MTTP</i> -R5: 5'- CTAATCTCAGTTGGATCATTTCAGTCTC
rs3792683	<i>MTTP</i> -F6: 5'- GTTACAGGTAGAGAACATGCTGACATG <i>MTTP</i> -R6: 5'- CCTCCATGGTACAGTGGTGCAC
rs2306985	<i>MTTP</i> -F7: 5'- CAGTCACAGAGTCCTACCCAGG <i>MTTP</i> -R7: 5'- GAGACTGCTGTCATCACA ACTCTGTG
rs738409	PNPLA3-6R: 5'- CAGCTGTGGCTACTCTGTCTG PNPLA3-4F: 5'-TGGAGAAAGCTTATGAAGGATCAG
rs1260326	GCKR-2F: 5'- GGGTCTTAGGGTACCTGCTCAGAGG GCKR-2R: 5'- GGTAACCCATGACCTTGCCCAGC
rs58542926	TM6SF2-2F: 5'- CCAAATGTTGGGATTACAGG TM6SF2-2R: 5'- ACAGATGTCCAGCAGGGTTC

**Genotyping:** For analysis of *MTTP* alleles in family members, the sequence of PCR products generated using the primers listed was determined using Sanger sequencing. PCR-RFLP genotyping of Indian cohort for rs745447480 used primers *MTTP*-F1 and *MTTP*-R1 followed by restriction digestion with Hpy166II. PCR-RFLP was used for genotyping rs738409 (FokI), rs58542926 (MspI) and rs58542926 (Hpy188I).

**Table of Antibodies Used:**

Antibody	Source
MTTP	Abcam
OCT3/4	Santa Cruz Biotechnology
NANOG	R&D Systems
MESP1	Abcam
GATA-4	R&D Systems
Nestin	Merck
SOX2	Novus Biologicals
ALB	R&D Systems
CYP2A6	OriGene Technologies
A1AT	Abcam
GST-pi	Enzo Life Sciences
Donkey Anti-Mouse AF 488 (1/400 dilution)	Invitrogen
Donkey Anti-Rabbit AF 647 (1/400 dilution)	Invitrogen
Donkey Anti-Goat AF 647 (1/400 dilution)	Invitrogen

**Microscopy:** Cells were fixed in 4% paraformaldehyde (PFA; VMR) for 20 min at 4°C. Fixed cells were stained with 0.5 µg/ml DAPI (Sigma), 5 µg/ml Hoechst 33342 (Invitrogen) in 1% FBS-PBST for 5 min to counter-stain nuclei, or 30µM Nile Red in methanol (Invitrogen) for 15min in the dark or Oil-Red-O. For immunocytochemistry, blocking and membrane permeabilization of fixed cells was done using 10% foetal bovine serum (FBS; Gibco) and 0.1% TritonX-100 (Thermo Scientific) in PBS (Gibco) for 30min. Cells were incubated overnight at 4°C in a combination of primary antibodies diluted in 1% FBS-PBST solution. The next day, cells were incubated with fluorescent-labelled secondary antibodies for 1h at ambient temperature, followed by nuclei-counterstaining using 0.5 µg/ml DAPI (Sigma) in 1% FBS-PBST for 5min. Images were acquired using the Operetta high content image analyser and analysed with Columbus system (both PerkinElmer).

## Supplemental Tables

**Supplemental Table 1.** Clinical characteristics of other individuals investigated.

MTTP genotype: MTP residue 564 (variant=T)	Sex	Liver Disease Diagnosis (method)	T2D	BMI	Hypertension	Liver biochemistry (LFTs) & lipid blood analyses at diagnosis
IT	M	NASH (USS)	x	<25	x	Elevated ALT, Elevated lipids TE<7.9kPa CAP>302
IT	M	FL (USS)	x	<25	x	Normal LFTs, Normal Lipids;
IT	M	FL (USS)	x	<30	x	Elevated ALT, Elevated lipids TE<7.9kPa CAP>302
IT	F	healthy (USS)	x	<25	x	Normal LFTs, Normal Lipids TE<7.9kPa CAP<302
IT	M	healthy (TE)	x	<30	x	Normal Lipids; TE<7.9kPa
IT	M	healthy (USS)	x	<25	x	Normal LFTs, Normal lipids,
IT	F	healthy (USS)	x	<25	x	Normal LFTs, Normal lipids, TE<7.9kPa CAP<302
IT	F	healthy (USS)	x	<25	x	Normal LFTs, Normal Lipids;
IT <sup>2</sup>	F	healthy (USS)	x	<25	x	Normal LFTs, Normal lipids, TE<7.9kPa CAP<302
IT <sup>2</sup>	M	healthy (USS)	x	<30	x	Normal LFTs, Normal lipids, TE<7.9kPa CAP<302
IT	M	healthy (USS)	x	<30	x	Normal LFTs (ALT=14), Normal lipids, TE<7.9kPa CAP<302
IT	F	FL (USS)	x	<25	x	Normal LFTs, Elevated lipids, TE<7.9kPa CAP>302
		healthy (USS)				Recovered. TE<7.9kPa CAP<302
IT	M	FL (USS)	x	<30	x	Normal LFTs, Normal Lipids
		healthy (USS)				Recovered. TE<7.9kPa CAP<302
II <sup>3</sup>	M	FL (USS)	x	<25	x	Normal LFTs, Normal Lipids
		healthy (USS)				Recovered. TE<7.9kPa CAP<302
II <sup>3</sup>	F	healthy (USS)	x	<25	x	Normal LFTs, Normal lipids, TE<7.9kPa CAP<302
II <sup>3</sup>	F	healthy (USS)	x	<30	x	Normal LFTs, Normal Lipids

<sup>1</sup>MTTP I564T novel variant (mutant allele nucleotide C results in threonine residue 564 (T)); <sup>2</sup> likely heterozygote as parent was MTP564-TT. F: female; M: male; USS: abdominal ultrasonographic steatosis score; NASH: non-alcoholic steatohepatitis; FL: fatty liver; T2D: Type 2 diabetes mellitus; LFTs: liver function tests; ALT: alanine transaminase U/L; TE: transient elastography; CAP: Controlled Attenuation Parameter dB/m. Further clinical details are available upon request to the corresponding author.

**Supplemental Table 2. *MTTP* genotyping**

Family member	MTTP p.I564T rs745447480 (T>C)	PNPLA3 p.I148M rs738409 (C>G)	TM6SF2 p.E167K rs58542926 (C>T)	MTTP -493 rs1800592 (G>T)	MTTP p.I128T rs3816873 (T>C)	MTTP Q297H rs2306985 (G>C)
B ♀	<b>IT</b> (TC)	<b>MM</b> (GG)	<b>EK</b> (CT)	TT	<b>TT</b> (CC)	<b>HH</b> (CC)
C ♀	<b>TT</b> (CC)	<b>IM</b> (CG)	<b>EE</b> (CC)	TT	<b>TT</b> (CC)	<b>HH</b> (CC)
D ♂	<b>TT</b> (CC)	<b>IM</b> (CG)	<b>EE</b> (CC)	TT	<b>TT</b> (CC)	<b>HH</b> (CC)
E ♂	<b>IT</b> (TC)	<b>IM</b> (CG)	<b>EE</b> (CC)	TT	X	<b>HH</b> (CC)
F ♂	<b>TT</b> (CC)	<b>IM</b> (CG)	<b>EK</b> (CT)	TT	<b>TT</b> (CC)	<b>HH</b> (CC)
G ♂	X	X	X	X	X	X
H ♂	<b>TT</b> (CC)	<b>IM</b> (CG)	<b>EK</b> (CT)	TT	<b>TT</b> (CC)	X
I ♀	<b>II</b> (TT)	<b>IM</b> (CG)	<b>EE</b> (CC)	TG	<b>TT</b> (CC)	<b>HH</b> (CC)
J ♀ -	<b>TT</b> (CC)	<b>IM</b> (CG)	<b>EE</b> (CC)	TT	<b>TT</b> (CC)	<b>HH</b> (CC)
K ♀	<b>IT</b> (TC)	<b>IM</b> (CG)	<b>EK</b> (CT)	TG	X	<b>HH</b> (CC)
L ♀	<b>TT</b> (CC)	<b>IM</b> (CG)	<b>EE</b> (CC)	TT	<b>TT</b> (CC)	<b>HH</b> (CC)
M ♂	<b>II</b> (TT)	<b>II</b> (CC)	<b>EK</b> (CT)	TG	<b>IT</b> (TC)	<b>QH</b> (GC)
N ♂	<b>IT</b> (TC)	<b>IM</b> (CG)	<b>EK</b> (CT)	TG	X	<b>QH</b> (GC)
O ♂	<b>IT</b> (TC)	<b>II</b> (CC)	<b>EK</b> (CT)	TT	<b>IT</b> (TC)	<b>QH</b> (GC)
Q ♂	<b>IT</b> (TC)	<b>MM</b> (GG)	<b>EE</b> (CC)	TG	<b>IT</b> (TC)	<b>HH</b> (CC)

Family pedigree showing relationship between family members is available on request from the corresponding author. The genotype allele is shown in parentheses; light grey indicates heterozygote; dark grey indicates homozygous for effect allele. Blue letters are amino acids encoded. For E98D rs2306986 (C): all tested were GG; For N166S rs3792683 (G): all tested were AA. X = not determined.

**Supplemental Table 3.** Characteristics of study participants included in meal response analysis.

Family member studied		Matched healthy volunteer		Matched NAFLD patient	
Person ID-Family	Description	Person ID-Healthy Volunteer	Description	Person ID-NAFLD case	Description
<b>F</b>	♂ BMI <25, <b>MTP564-TT</b> cirrhosis, PNPLA3-IM TM6SF2-EK	<b>1</b>	♂ BMI <30, PNPLA3-IM TM6SF2-EE	<b>2</b>	♂ BMI ≥30, NASH + fibrosis PNPLA3-IM TM6SF2-EK
				<b>3</b>	♂ BMI <30, NASH + fibrosis PNPLA3-IM <b>TM6SF2-KK</b>
<b>J</b>	♀ BMI <25, <b>MTP564-TT</b> healthy transplanted PNPLA3-IM TM6SF2-EE	<b>4</b>	♀ BMI <30, <b>PNPLA3-MM</b> TM6SF2-EE	<b>5</b>	♀ BMI <30, NASH no fibrosis, PNPLA3-II TM6SF2-EE
<b>K</b>	♀ BMI <25, MTP564-IT fatty liver PNPLA3-IM TM6SF2-EK	<b>6</b>	♀ BMI <30, PNPLA3-II TM6SF2-EE	<b>7</b>	♀ BMI ≥30, NASH + fibrosis, <b>PNPLA3-MM</b> TM6SF2-EE
<b>M</b>	♂ BMI <30, MTP564-II healthy PNPLA3-II TM6SF2-EK	<b>8</b>	♂ BMI <30, PNPLA3 CC TM6SF2 CT	<b>9</b>	♂ BMI ≥30, NASH + fibrosis, diabetic PNPLA3-II TM6SF2-EE
<b>Q</b>	♂ BMI <25, MTP564-IT healthy <b>PNPLA3-MM</b> TM6SF2-EE	<b>10</b>	♂ BMI <30, PNPLA3-II TM6SF2-EE	<b>11</b>	♂ BMI ≥30, NASH + fibrosis <b>PNPLA3-MM</b> TM6SF2-EK

Participants were gender matched to family members and age matched within 9 years. Patients had NAFLD diagnosis on liver biopsy. Skin biopsy samples from participants J and 1 were used to derive cell lines used for analysis. *MTTP* mutation C encodes MTP-564T. *PNPLA3* C>G rs738408 and *TM6SF2* C>T rs58542926 genotype is shown. *PNPLA3* G is the effect allele encoding 148M; *TM6SF2* T is the effect allele encoding 167K. Bold indicates homozygous effect alleles.

**Supplemental Table 4.** All RNA-seq and CHIP-seq Sample Search Space (ARCHS4) tissue type and cell type predictions for hIPSC-derived hepatocyte-like cells.

Index	MTP564-II wild type hIPSC derived hepatocyte-like cells					MTP564-TT variant hIPSC derived hepatocyte-like cells					
	Name	P-value	Adjusted P-value	Odds ratio	Combined Score	Name	P-value	Adjusted P-value	Odds ratio	Combined Score	
Tissue Type Prediction	1	Liver (bulk tissue)	6.662e-163	7.194e-161	2.72	1017.19	Liver (bulk tissue)	2.363e-171	2.552e-169	2.74	1075.07
	2	Hepatocyte	3.025e-118	1.633e-116	2.44	661.17	Hepatocyte	4.413e-123	2.383e-121	2.45	689.05
	3	Small intestine (bulk tissue)	1.268e-78	4.564e-77	2.15	385.83	Small intestine (bulk tissue)	4.644e-82	1.672e-80	2.16	403.60
	4	Gastric epithelial cell	9.568e-70	2.583e-68	2.08	330.09	Ileum (bulk tissue)	4.053e-68	1.094e-66	2.04	316.85
	5	Ileum (bulk tissue)	4.833e-67	1.044e-65	2.05	313.59	Lung (bulk tissue)	1.365e-61	2.948e-60	1.99	278.23
	6	Lung (bulk tissue)	5.792e-58	1.042e-56	1.97	259.88	Gastric epithelial cell	1.754e-59	3.158e-58	1.97	266.04
	7	Colon (bulk tissue)	1.893e-53	2.921e-52	1.93	234.18	Colon (bulk tissue)	2.340e-53	3.610e-52	1.91	231.44
	8	Gastric tissue (bulk)	4.762e-46	6.428e-45	1.85	193.58	Gastric tissue (bulk)	3.668e-47	4.952e-46	1.85	197.74
	9	Omentum	3.685e-39	4.422e-38	1.78	157.60	Omentum	6.260e-45	7.512e-44	1.83	185.93
	10	Amniotic fluid	1.454e-23	1.570e-22	1.59	83.40	Skin (bulk tissue)	5.090e-28	5.497e-27	1.63	102.71
Cell Type Prediction	1	HEPG2	9.067e-83	1.133e-80	2.16	407.91	HEPG2	1.419e-75	1.774e-73	2.08	358.54
	2	HUH7	5.774e-52	3.609e-50	1.90	223.63	HUH7	5.473e-42	3.421e-49	1.87	216.27
	3	HEP3B	1.702e-41	7.091e-40	1.79	168.03	HEP3B	9.101e-42	3.754e-40	1.78	167.99
	4	CFPAC1	1.049e-38	3.278e-37	1.76	153.90	CFPAC1	2.518e-38	7.870e-37	1.74	150.72
	5	CAPAN1	5.244e-36	1.311e-34	1.73	140.51	MCF10	2.035e-33	5.088e-32	1.69	126.93
	6	A549	1.156e-29	2.409e-28	1.65	110.23	CAPAN1	3.661e-32	7.626e-31	1.67	121.00
	7	BXPC3	7.111e-28	1.270e-26	1.63	102.00	A549	7.477e-32	1.335e-30	1.67	119.54
	8	MCF10	2.724e-25	4.257e-24	1.60	90.38	BXPC3	4.377e-27	6.840e-26	1.61	97.69
	9	RT4	1.230e-23	1.709e-22	1.58	83.09	RT4	1.444e-24	2.006e-23	1.58	86.55
	10	HT29	2.676e-22	3.345e-21	1.56	77.31	HNSCC	1.740e-23	2.175e-22	1.56	81.86

**Supplemental Table 5.** Gene set analysis showing terms for all genes differentially expressed between MTP564-II wild type and MTP564-TT variant hIPSC-derived hepatocyte-like cells.

source	term_name	term_id	adjusted_p_value	negative_log10_of_adjusted_p_value
REAC	Extracellular matrix organization	REAC:R-HSA-1474244	4.87E-07	6.312667258
GO:CC	extracellular matrix	GO:0031012	2.85941E-06	5.543723748
REAC	Degradation of the extracellular matrix	REAC:R-HSA-1474228	2.43072E-05	4.614264431
GO:BP	extracellular matrix organization	GO:0030198	0.000831626	3.080071732
GO:BP	extracellular structure organization	GO:0043062	0.000894227	3.048552438
REAC	Collagen formation	REAC:R-HSA-1474290	0.003136295	2.503583115
GO:BP	digestion	GO:0007586	0.004959299	2.304579689
GO:CC	collagen-containing extracellular matrix	GO:0062023	0.00516165	2.287211438
KEGG	Protein digestion and absorption	KEGG:04974	0.006978005	2.156268728
REAC	Collagen biosynthesis and modifying enzymes	REAC:R-HSA-1650814	0.014030082	1.852939779
KEGG	ECM-receptor interaction	KEGG:04512	0.014057765	1.852083733
REAC	ECM proteoglycans	REAC:R-HSA-3000178	0.016110075	1.792902441
TF	Factor: slug; motif: NRCAGGTGCR; match class: 1	TF:M12259_1	0.027606305	1.558991718

**Supplemental Table 6.** Gene set analysis showing terms for genes upregulated in MTP564-II wild type hIPSC derived hepatocyte-like cells compared to MTP564-TT variant hIPSC-derived hepatocyte-like cells.

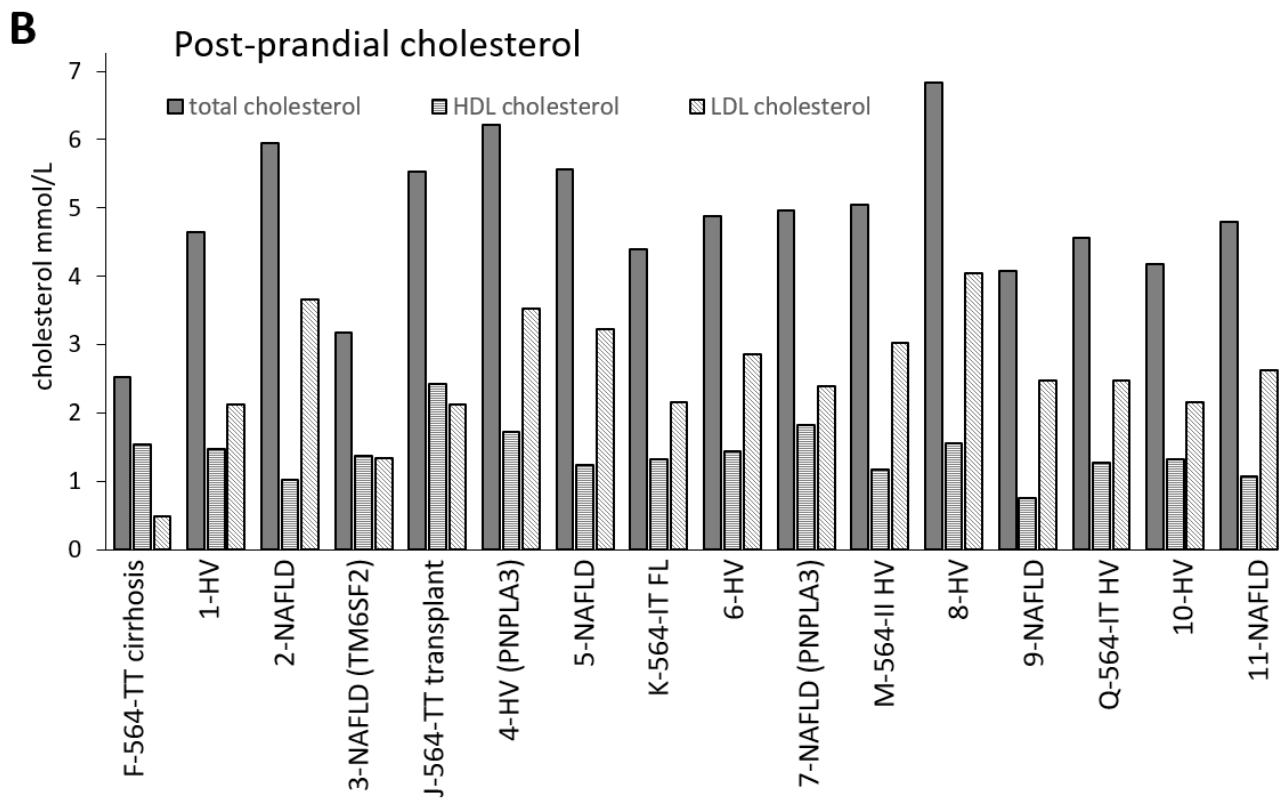
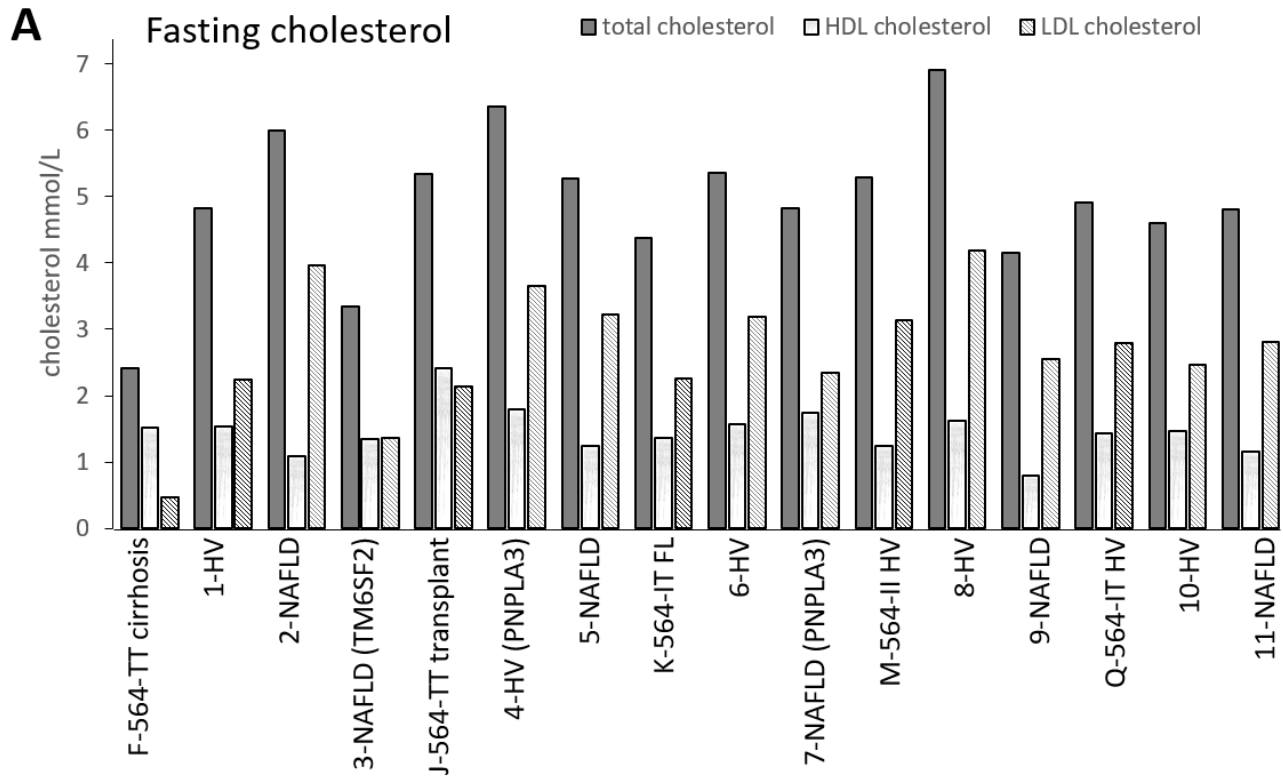
source	term_name	term_id	adjusted_p_value	negative_log10_of_adjusted_p_value
GO:CC	midbody	GO:0030496	0.014234541	1.846656538
REAC	Resolution of Sister Chromatid Cohesion	REAC:R-HSA-2500257	0.018667177	1.728921362
REAC	Amplification of signal from unattached kinetochores via a MAD2 inhibitory signal	REAC:R-HSA-141444	0.023621746	1.626688011
REAC	Amplification of signal from the kinetochores	REAC:R-HSA-141424	0.023621746	1.626688011
GO:CC	spindle	GO:0005819	0.026656468	1.5741974

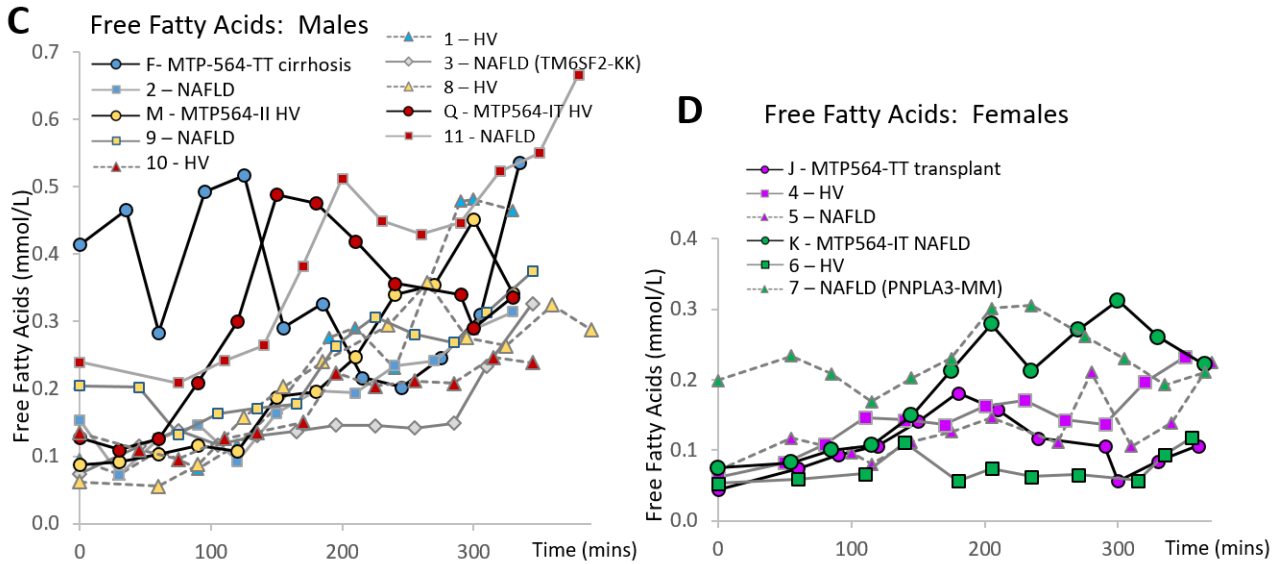


**Supplemental Table 7.** Gene set analysis showing terms for genes upregulated in MTP564-TT variant hIPSC derived hepatocyte-like cells compared to MTP564-II wild type hIPSC-derived hepatocyte-like cells.

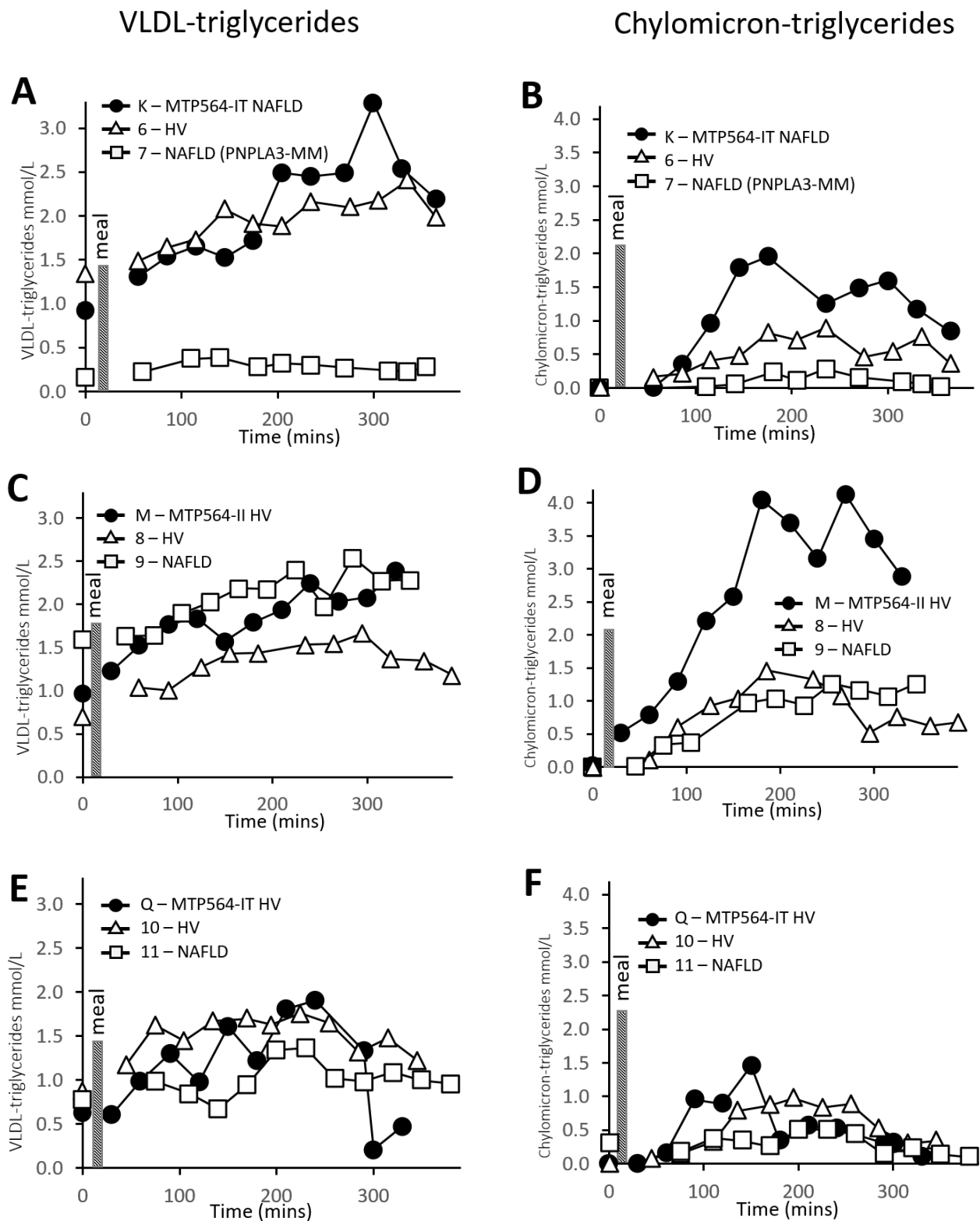
source	term_name	term_id	adjusted_p_value	negative_log10_of_adjusted_p_value
REAC	Extracellular matrix organization	REAC:R-HSA-1474244	0.000145038	3.838517822
REAC	Degradation of the extracellular matrix	REAC:R-HSA-1474228	0.000353562	3.451534414
REAC	ECM proteoglycans	REAC:R-HSA-3000178	0.002952027	2.529879617
GO:BP	extracellular matrix organization	GO:0030198	0.008885339	2.051326005
GO:BP	extracellular structure organization	GO:0043062	0.009318155	2.030670061
HP	Abnormal cardiovascular system physiology	HP:0011025	0.014922899	1.826146793
KEGG	ECM-receptor interaction	KEGG:04512	0.01921473	1.71636572
KEGG	Focal adhesion	KEGG:04510	0.027077396	1.567393098
WP	Focal Adhesion	WP:WP306	0.030961443	1.509178802
HP	Osteoporosis	HP:0000939	0.038409054	1.415566389
HP	Abnormality of skin physiology	HP:0011122	0.043372457	1.362785975
HP	Abnormality of humoral immunity	HP:0005368	0.043717346	1.35934621
HP	Abnormal vascular physiology	HP:0030163	0.04508747	1.345944131

# Supplemental Figures

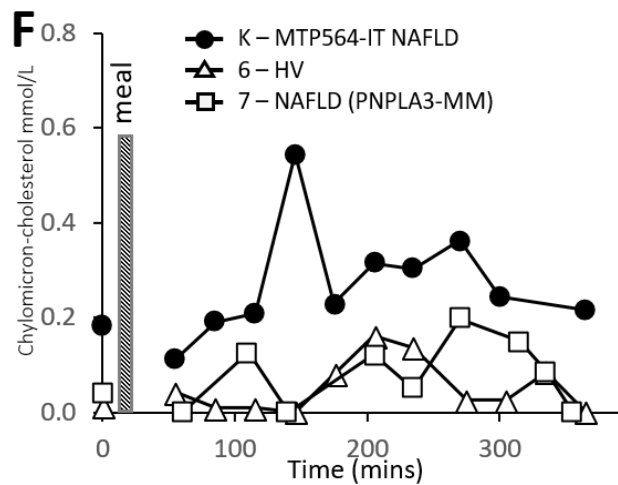
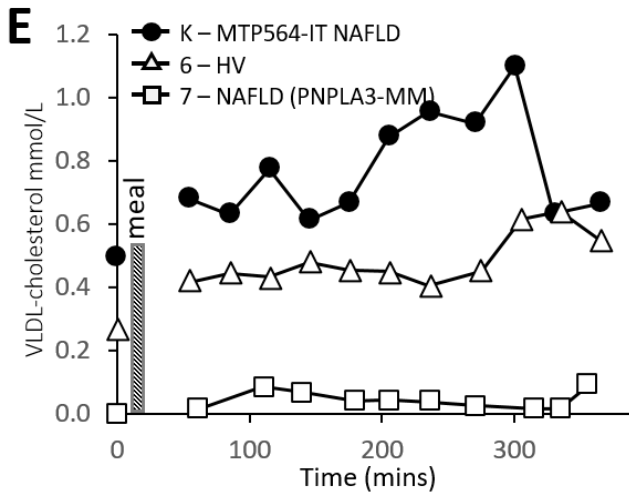
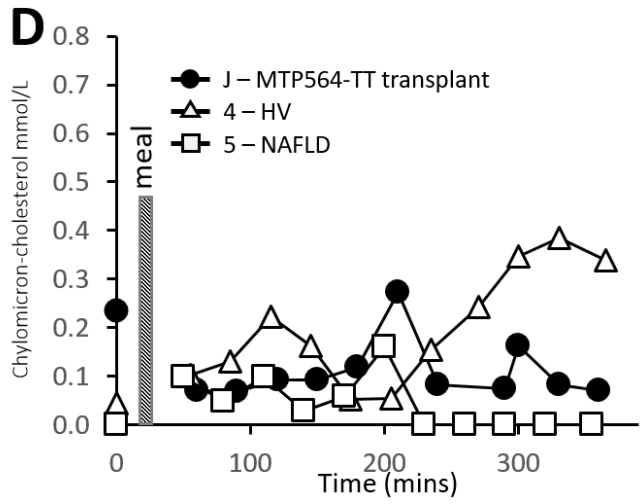
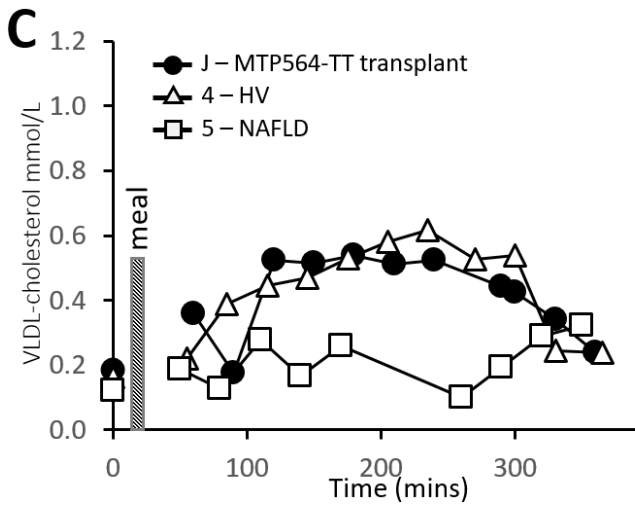
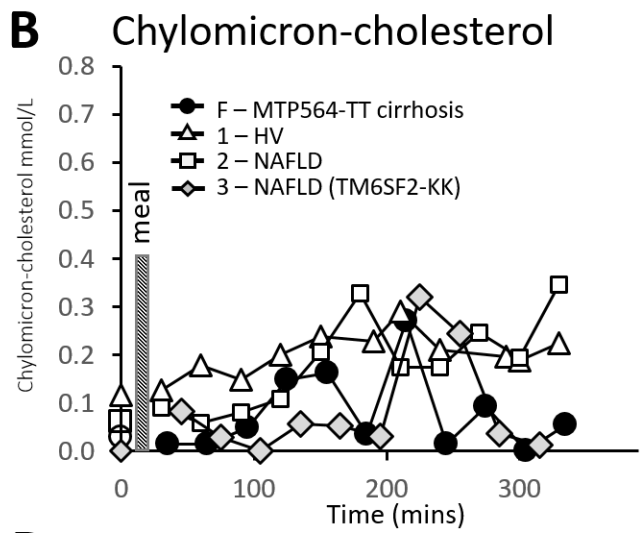
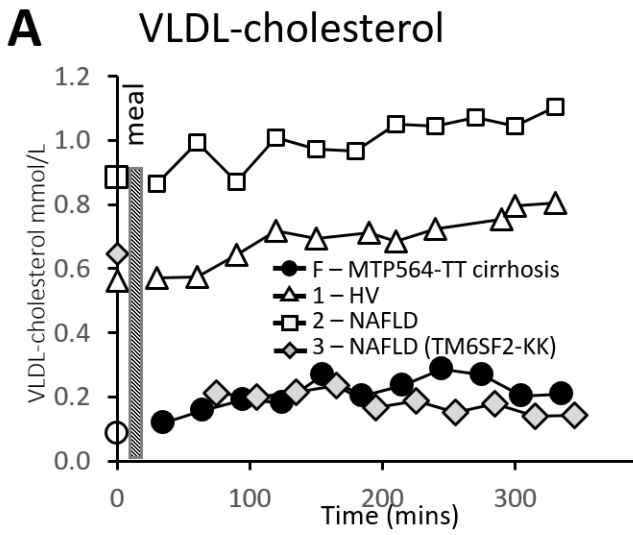


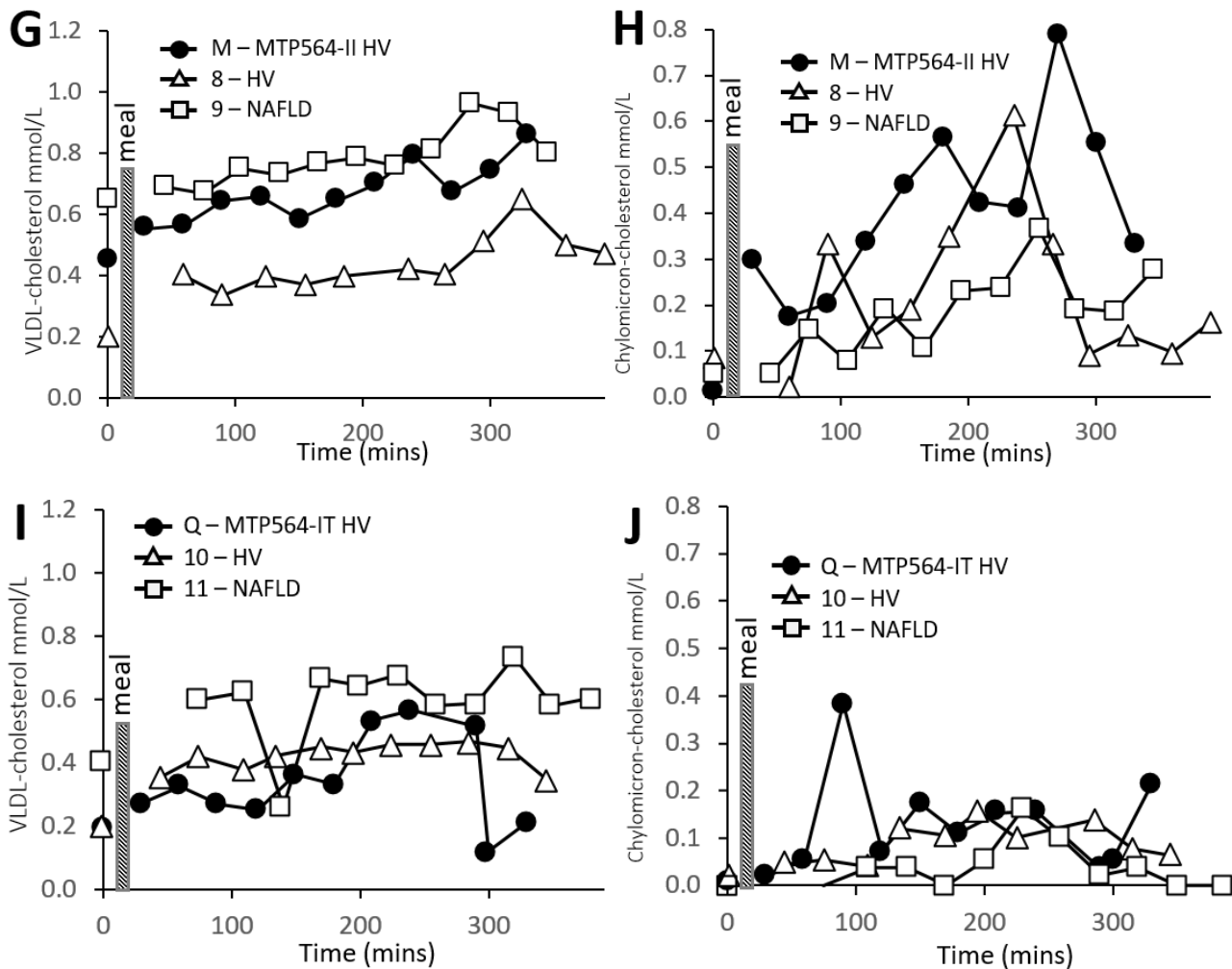


**Supplementary Figure 1. Serum cholesterol levels and free fatty acid levels in study participants.** Participants grouped according to age and gender matching with family member (Fig. 1a and Supplemental Table 3). Genes are shown in parentheses where participant is homozygous for other effect alleles: *PNPLA3* rs738409; *TM6SF2* rs58542926). **A** Fasting cholesterol. **B** Cholesterol level approx. 2h after eating standard study meal. **C** Free fatty acid levels in males. **D** Free fatty acid levels in females. NAFLD= non-alcoholic fatty liver disease; HV=healthy volunteer; FL=fatty liver. *PNPLA3* (rs738409) variant homozygotes (148-MM) and *TM6SF2* (rs58542926) variant homozygotes (128-KK) are indicated.



**Supplementary Figure 2. Lipoprotein-associated triglyceride levels in study participants before and after a fatty meal.** Participants are described in Supplemental Table 1. **A** Serum VLDL-triglycerides in MTP564-IT family member K and matched control participants: 6 (HV) and 7 (NAFLD patient). **B** Chylomicron-triglycerides in participants K, 6 and 7. **C** VLDL-triglyceride in MTP564-II (wild type) family member M and matched control participants: 8 (HV) and 9 (NAFLD patient). **D** Chylomicron-triglycerides in participants M, 8 and 9. **E** VLDL-triglycerides in MTP564-IT family member Q and matched control participants: 10 (HV) and 11 (NAFLD patient). **F** Chylomicron-triglycerides in participants Q, 10 and 11. *PNPLA3* (rs738409) variant homozygote (148-MM) is indicated. HV=healthy volunteer; NAFLD=non-alcoholic fatty liver disease.

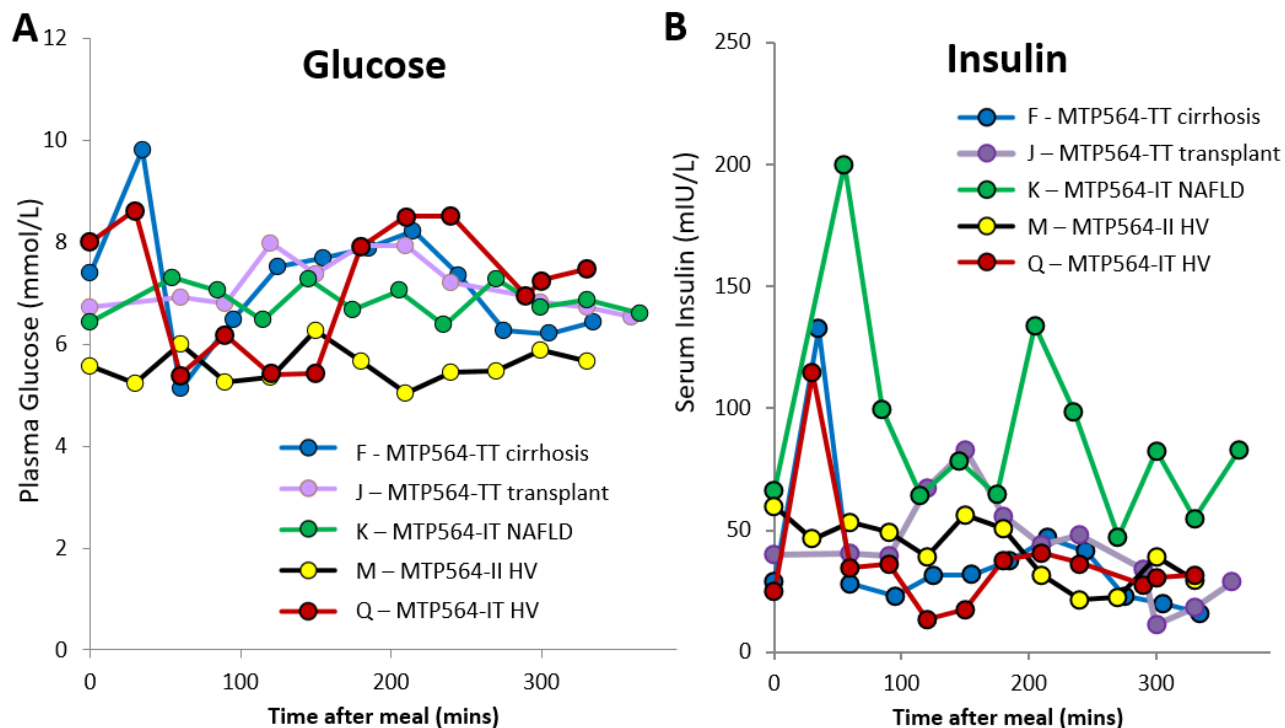




### Supplementary Figure 3. Lipoprotein-associated cholesterol levels in study

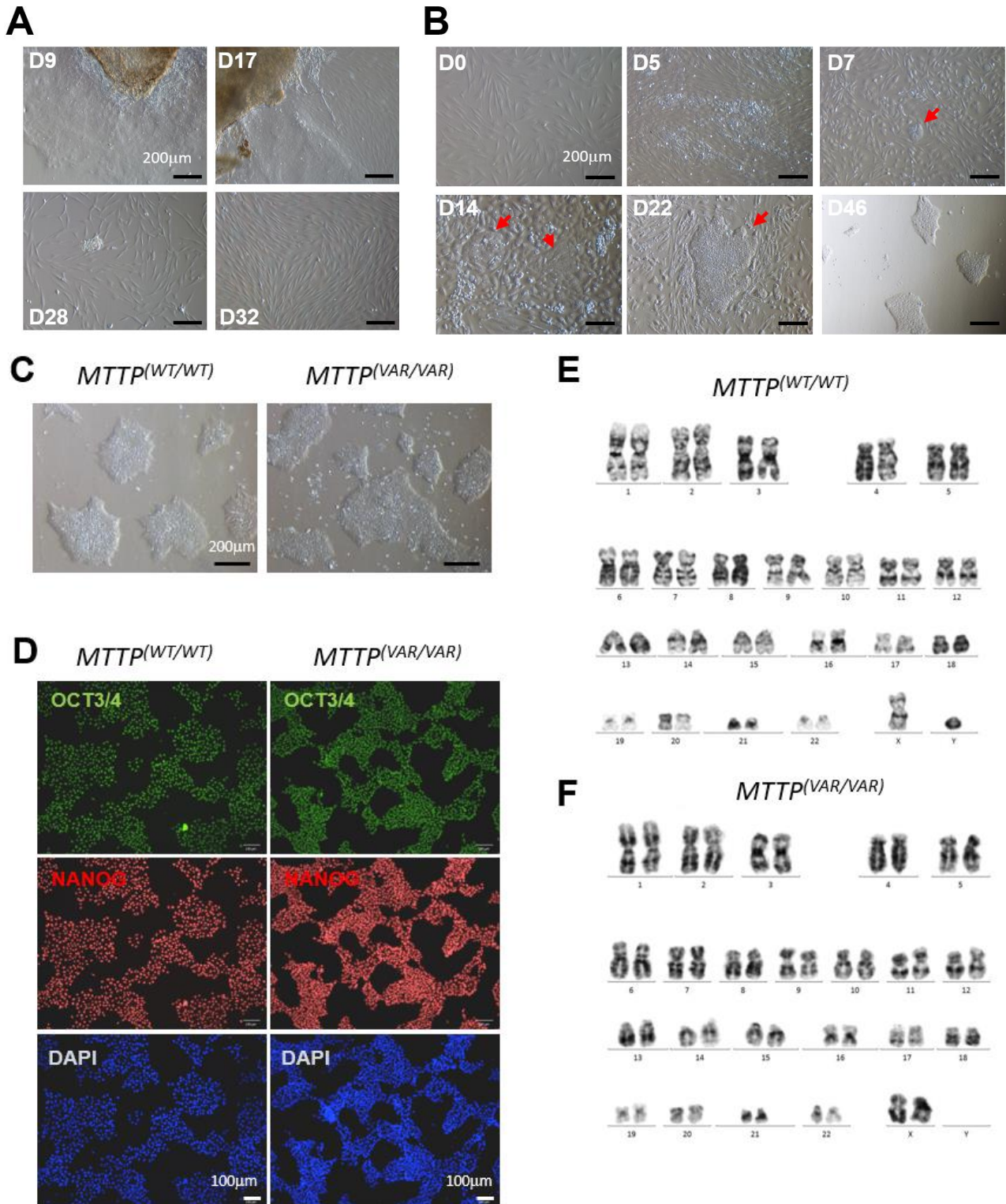
**participants before and after a high fat meal.** Participants are described in Supplemental Table 1. **A** VLDL-associated cholesterol levels in MTP564-TT family member F with cirrhosis and matched control participants: 1 (HV), 2 and 3 (NAFLD patients). **B** Chylomicron-associated cholesterol in participants F, 1, 2 and 3. **C** VLDL-cholesterol in MTP564-TT family member J with liver transplant and matched control participants: 4 (HV) and 5 (NAFLD patient). **D** Chylomicron-associated cholesterol in participants J, 4 and 5. **E** VLDL-associated cholesterol levels in MTP564-IT family member K with NAFLD and matched control participants: 6 (HV) and 7 (NAFLD patient). **F** Chylomicron-associated cholesterol in participants K, 6 and 7. **G** VLDL-associated cholesterol levels in MTP564-II (wild type) family member M and matched control participants 8 (HV) and 9 (NAFLD patient). **H** Chylomicron-associated cholesterol in participants M, 8 and 9. **I** VLDL-associated cholesterol levels in MTP564-IT family member Q and matched control participants 10 (HV) and 11 (NAFLD patient). **J** Chylomicron-associated cholesterol in participants Q, 10 and 11.

*TM6SF2* (rs58542926) variant homozygote (128-KK) and *PNPLA3* (rs738409) variant homozygotes (148-MM) are indicated. HV=healthy volunteer; NAFLD=non-alcoholic fatty liver disease.



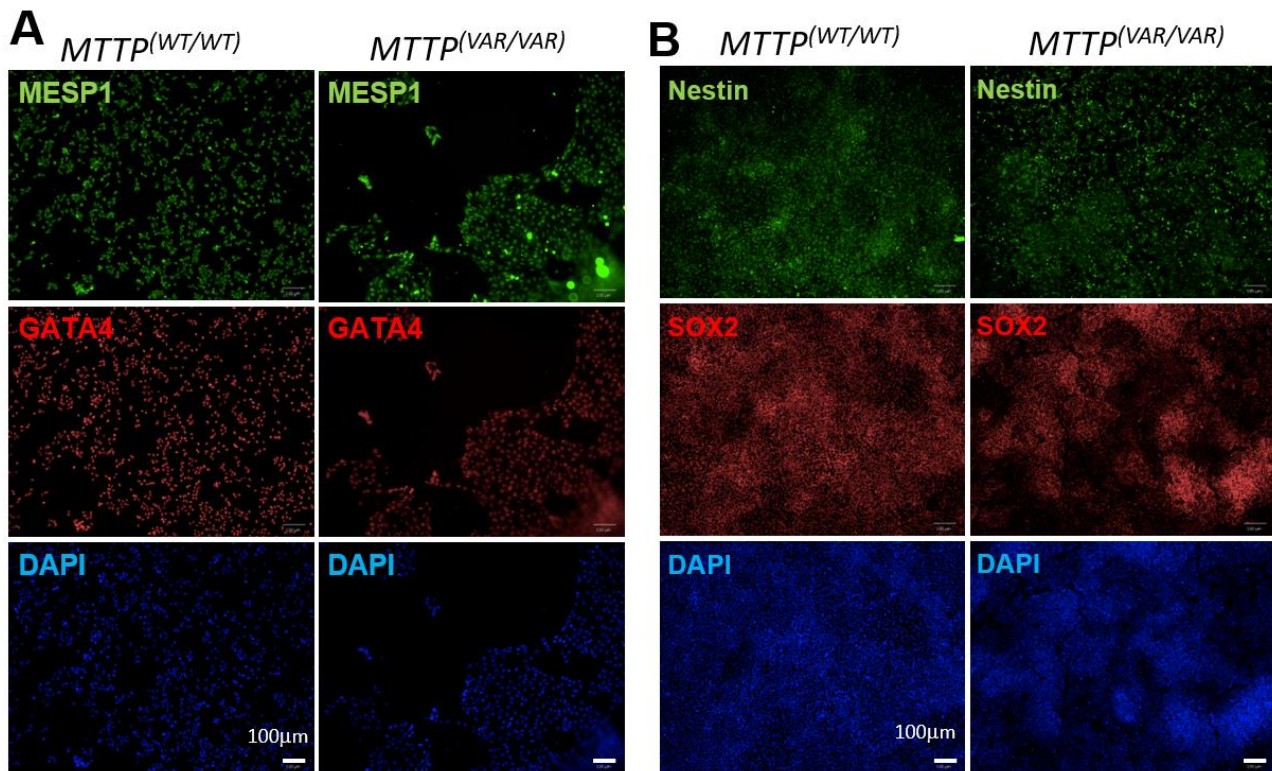
**Supplementary Figure 4 Blood biomarker levels in family members after consuming a fatty meal. A Fasting blood glucose. B Insulin levels.**

*PNPLA3* (rs738409) variant homozygotes (148-MM) and *TM6SF2* (rs58542926) variant homozygotes (128-KK) are indicated. HV=healthy volunteer; NAFLD=non-alcoholic fatty liver disease.

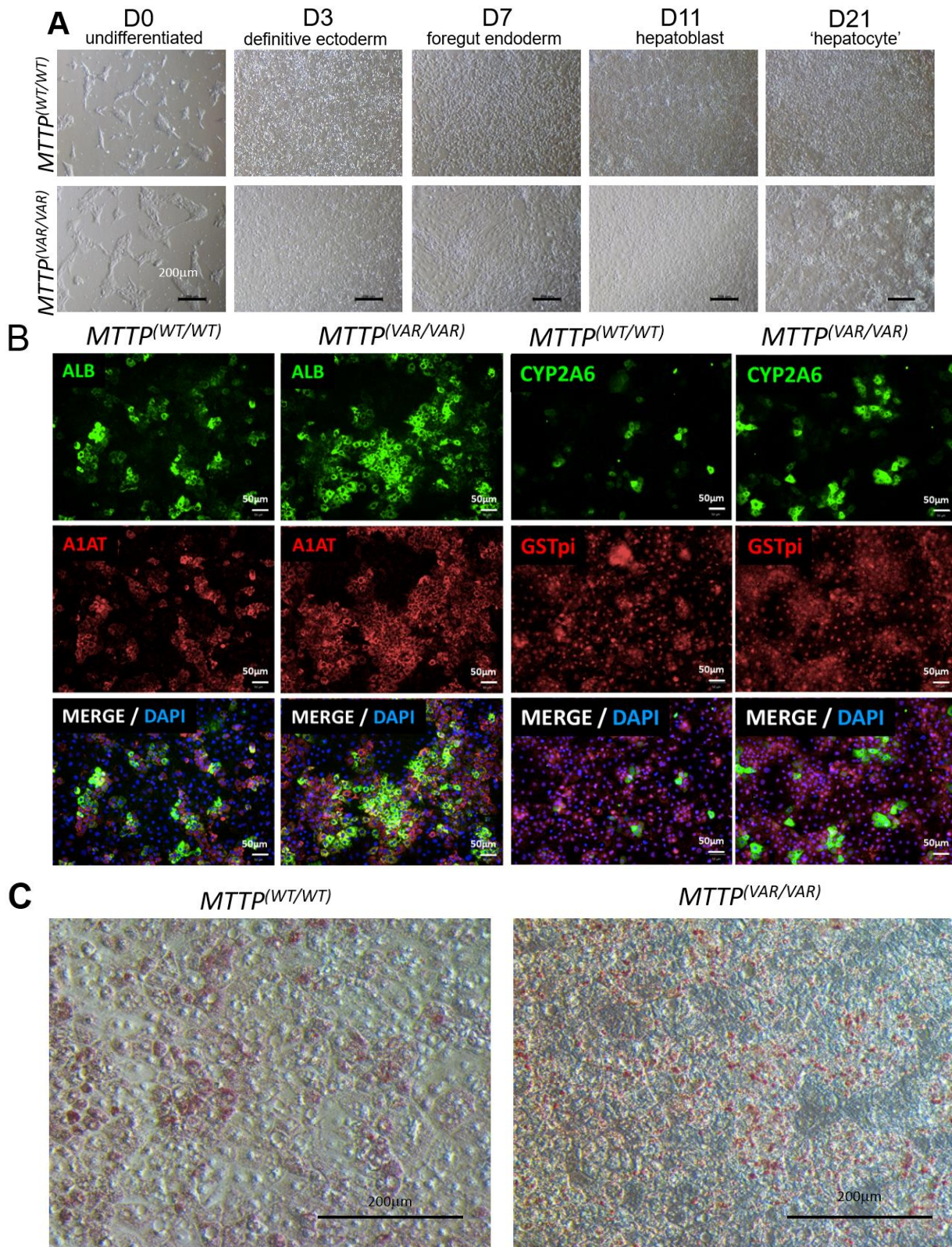


**Supplementary Figure 5. Characteristics of hiPSCs derived from donor skin biopsy. a,** Light microscopy showing representative skin biopsy fibroblast outgrowth at day 9, 17, 28 and 32. **b,** Light microscopy showing representative images of fibroblast reprogramming at day 0, 5, 7, 14, 22 and 46 post viral transduction. Red arrows indicate emerging hiPSC colonies. **c,** Light microscopy showing representative pictures of reprogrammed *MTTP*<sup>(WT/WT)</sup> and *MTTP*<sup>(VAR/VAR)</sup> hiPSC cultures. **d,** Immunocytochemistry showing expression of pluripotency markers in *MTTP*<sup>(WT/WT)</sup> and *MTTP*<sup>(VAR/VAR)</sup> hiPSCs. **e,** Karyotype of *MTTP*<sup>(WT/WT)</sup>. **f,** Karyotype of *MTTP*<sup>(VAR/VAR)</sup> hiPSCs.





**Supplementary Figure 6. Differentiation of  $MTTP^{(WT/WT)}$  and  $MTTP^{(VAR/VAR)}$  hiPSCs into multiple germ layers.** **A** Expression of mesoderm genes following mesoderm differentiation of  $MTTP^{(WT/WT)}$  and  $MTTP^{(VAR/VAR)}$  hiPSCs by immunocytochemistry with MESP1, GATA4 and DAPI staining. **B** Expression of ectoderm genes following ectoderm differentiation of  $MTTP^{(WT/WT)}$  and  $MTTP^{(VAR/VAR)}$  hiPSCs by immunocytochemistry with Nestin, SOX2 and DAPI staining.



**Supplementary Figure 7. Differentiation of *MTTP*<sup>(WT/WT)</sup> and *MTTP*<sup>(VAR/VAR)</sup> hiPSCs into mature HLCs. **A** Representative light microscopy images of *MTTP*<sup>(WT/WT)</sup> and *MTTP*<sup>(VAR/VAR)</sup> hiPSCs as they differentiate into HLCs including undifferentiated cells (Day 0), definitive endoderm (Day 3), foregut endoderm (Day 7), hepatoblast (Day 11) and 'hepatocytes' (Day 21). **B** Immunocytochemistry showing expression of hepatocyte markers in *MTTP*<sup>(WT/WT)</sup> and *MTTP*<sup>(VAR/VAR)</sup> hiPSC derived HLCs. **C** Light microscopy of Oil-Red-O stained *MTTP*<sup>(WT/WT)</sup> and *MTTP*<sup>(VAR/VAR)</sup> HLCs.**