

Obesity, Ethnicity, and Covid-19 Mortality: A population-based cohort study of 12.6 Million Adults in England

Supplementary Material

Contents

eTable 1: Included covariates.	2
eTable 2. Comparison of demographic and medical characteristics by those with and without valid body mass index data.	6
eFigure 1. Flow diagram of cohort.	10
eFigure 2. Percentage of missing BMI data in each ethnic group by region.	11
eFigure 3. Association of BMI with COVID-19 mortality by ethnicity in women.	12
eFigure 4. Association of BMI with COVID-19 mortality by ethnicity in men.	13
eFigure 5. Association of BMI with COVID-19 mortality by ethnicity: individuals 70 years or greater.	14
eFigure 6. Association of BMI with COVID-19 by ethnicity: individuals younger than 70 years.	15
eFigure 7. Association of BMI with COVID-19 mortality across ten ethnic categories.	16

eTable 1: Included covariates.

Variable	Coding	Model included
Geographical variables		
Region	Dummy variables representing region of residence within England (South East, London, North West, East of England, West Midlands, South West, Yorkshire and the Humber, East Midlands, North East)	1,2
Population density of Lower Super Output Area (see table note)	Second-order polynomial, allowing for a different slope beyond the 99 th percentile of the distribution to account for extreme values	1,2
Rural urban classification	Rural hamlets and isolated dwellings, Rural hamlets and isolated dwellings in a sparse setting, Rural town and fringe, Rural town and fringe in a sparse setting, Rural village, Rural village in a sparse setting, Urban city and town, Urban city and town in a sparse setting, Urban major conurbation, Urban minor conurbation	1,2
Socio-economic variables		
Index of Multiple Deprivation (IMD)	Dummy variables representing deciles of deprivation – from 1 (most deprived) to 10 (least deprived)	1,2
Household deprivation (see table note)	Not deprived, deprived in one dimension, deprived in two dimensions, deprived in three dimensions, deprived in four dimensions	1,2
Household tenure	Own outright, own with mortgage, social rented, private rented, other	1,2
Approximate Social Grade of the household reference person (see table note)	AB Higher and intermediate managerial/administrative/professional; C1 Supervisory, clerical, junior managerial/administrative/professional; C2 Skilled manual workers; D Semi-skilled and unskilled manual workers; E On state benefit, unemployed, lowest grade workers (Based on household tenure for people aged 75 or over)	1,2

Level of highest qualification	Degree, A-level or equivalent, GCSE or equivalent, no qualification	1,2
Household variables		
Household size	1-2 people, 3-4 people, 5-6 people, 7+ people	1,2
Multigenerational household	Dummy for households with at least one person 65+ and someone at least 20 years younger	1,2
Household with children	At least one child aged 9 to 18	1,2
Occupational exposure variables (see table note)		
Key worker type	Education & childcare, food & necessity goods, health & social care, public services, national & local government, public safety & national security, transport, utilities & communication, not a key worker	1,2
Key worker in the household	Yes, no	1,2
Exposure to disease	Score ranging from 0 (no exposure) to 100 (maximum exposure), derived from O*NET data [12]	1,2
Proximity to others	Score ranging from 0 (no exposure) to 100 (maximum exposure), derived from O*NET data [12]	1,2
Household exposure to disease	Maximum 'exposure to disease' score within each household	1,2
Household proximity to others	Maximum of 'proximity to others' score within each household	1,2
Health-related variables		

Chronic kidney disease (CKD)	No CKD, CKD3, CKD4, CKD5	2
Learning disability	No learning disability, Down's Syndrome, other learning disability	2
		2
Cancer and immunosuppression	Dummies for blood cancer, solid organ transplant , Prescribed immunosuppressant medication by GP , Prescribed leukotriene or long-acting beta blockers, Prescribed regular prednisolone ,	2
Other conditions	Diabetes, Chronic obstructive pulmonary disease (COPD), Asthma , Rare pulmonary diseases , Pulmonary hypertension or pulmonary fibrosis , Coronary heart disease , Stroke , Atrial Fibrillation , Congestive cardiac failure , Venous thromboembolism , Peripheral vascular disease , Congenital heart disease , Dementia , Parkinson's disease , Epilepsy , Rare neurological conditions , Cerebral palsy , Severe mental illness (bipolar disorder, schizophrenia, severe depression), Osteoporotic fracture , Rheumatoid arthritis or Systemic lupus erythematosus , Cirrhosis of the liver	2

Table information: There are 32,844 Lower Super Output Area (LSOA) areas in England, with a mean population of 1500 and a minimum of 1000. We calculated density as LSOA population divided by LSOA area. Household deprivation is defined across four dimensions: employment (at least one household member is unemployed or with long-term sickness, not including full-time students); education (no household member has at least Level 2 education, and no one aged 16-18 years is a full-time student); health and disability (at least one household member reported their health status as being 'bad'/'very bad' or has a long-term health problem); and housing (the household's accommodation is overcrowded, with an occupancy rating -1 or less, or is in a shared dwelling, or has no central heating). Approximate Social Grade is a socio-economic classification based on the occupation, employment, qualification, and tenure of the household reference person. Key worker type is defined based on the occupation and industry code. 'Exposure to disease' and 'proximity to others' are derived from the O*NET database [1], which collects a range of information about individual working conditions and the day-to-day employment roles. To calculate the proximity and exposure measures, the questions asked were: i) How physically close to other people are you when you perform your current job? ii) How often does your current job require that you be exposed to diseases or infection? Scores ranging from 0 (no exposure) to 100 (maximum exposure) were calculated based on these questions [1]

1. Office for National Statistics. Which occupations have the highest potential exposure to the coronavirus (COVID-19)? 2020.
<https://www.ons.gov.uk/employmentandlabourmarket/peopleinwork/employmentandempl>

[oyetypes/articles/whichoccupationshavethehighestpotentialexposuretothecoronaviruscovid19/2020-05-11](#) (11 August 2020, date last accessed)

eTable 2. Comparison of demographic and medical characteristics by those with and without valid body mass index data.

Variable	Value	Cases without BMI	Cases with BMI
Ethnicity (%)	Black	209,977 (1.84)	416,542 (3.31)
	Other	319,432 (2.79)	478,196 (3.80)
	South Asian	442,014 (3.87)	621,691 (4.94)
	White	10,464,547 (91.51)	11,074,708 (87.96)
Age (yr) (mean [SD])		60.85 (13.33)	61.16 (13.37)
Sex (%)	Male	5,506,657 (48.15)	5,837,712 (46.36)
	Female	5,929,313 (51.85)	6,753,425 (53.64)
Region (%)	East	2,245,903 (19.64)	568,218 (4.51)
	East Midlands	1,856,050 (16.23)	323,279 (2.57)
	London	714,638 (6.25)	2,207,266 (17.53)
	North East	731,420 (6.40)	491,378 (3.90)
	North West	533,380 (4.66)	2,649,450 (21.04)
	South East	1,284,037 (11.23)	2,833,140 (22.50)
	South West	1,581,588 (13.83)	1,050,868 (8.35)
	West Midlands	564,979 (4.94)	1,951,047 (15.50)
	Yorkshire and the Humber	1,923,975 (16.82)	516,491 (4.10)
	Urban Rural classification (%)	Rural hamlets and isolated dwellings	415,515 (3.63)
Rural hamlets and isolated dwellings in a sparse setting		38,287 (0.33)	38,875 (0.31)
Rural town and fringe		1,280,199 (11.19)	973,801 (7.73)
Rural town and fringe in a sparse setting		55,457 (0.48)	40,312 (0.32)
Rural village		783,065 (6.85)	690,128 (5.48)
Rural village in a sparse setting		42,543 (0.37)	45,093 (0.36)
Urban city and town		5,594,085 (48.92)	4,951,885 (39.33)
Urban city and town in a sparse setting		21,287 (0.19)	23,398 (0.19)
Urban major conurbation		2,551,576 (22.31)	5,186,497 (41.19)
Urban minor conurbation		653,956 (5.72)	200,047 (1.59)
Population density (mean [SD])		3,668.58 (3,936.75)	4,426.54 (4,514.81)
Household deprivation (%)	Not deprived in any dimension	5,485,531 (47.97)	5,969,378 (47.41)
	Deprived in 1 dimension	3,574,785 (31.26)	3,922,351 (31.15)
	Deprived in 2 dimensions	1,714,038 (14.99)	1,931,019 (15.34)
	Deprived in 3 dimensions	482,235 (4.22)	568,061 (4.51)
	Deprived in 4 dimensions	44,150 (0.39)	55,324 (0.44)

	No code	135,231 (1.18)	145,004 (1.15)
IMD decile (%)	1 (most deprived)	862,777 (7.54)	1,089,312 (8.65)
	2	902,810 (7.89)	1,161,973 (9.23)
	3	1,008,728 (8.82)	1,187,139 (9.43)
	4	1,112,875 (9.73)	1,192,315 (9.47)
	5	1,188,222 (10.39)	1,239,581 (9.84)
	6	1,252,507 (10.95)	1,260,369 (10.01)
	7	1,290,824 (11.29)	1,305,370 (10.37)
	8	1,296,152 (11.33)	1,338,068 (10.63)
	9	1,299,601 (11.36)	1,364,608 (10.84)
	10 (least deprived)	1,221,474 (10.68)	1,452,402 (11.54)
Approximate social grade (%)	AB	2,551,383 (22.31)	3,019,706 (23.98)
	C1	3,308,971 (28.93)	3,716,288 (29.52)
	C2	2,571,883 (22.49)	2,645,724 (21.01)
	D	2,620,394 (22.91)	2,737,636 (21.74)
	E	340,823 (2.98)	422,077 (3.35)
	No code	42,516 (0.37)	49,706 (0.39)
Highest educational attainment (%)	No qualifications	2,598,176 (22.72)	2,816,570 (22.37)
	1-4 GCSE/O-levels	1,632,648 (14.28)	1,690,715 (13.43)
	5+ GCSE/O-levels	1,647,767 (14.41)	1,732,403 (13.76)
	Apprenticeship	487,068 (4.26)	481,385 (3.82)
	2+ A Levels or equivalent	1,179,788 (10.32)	1,255,709 (9.97)
	Degree or above	3,262,677 (28.53)	3,881,513 (30.83)
	Other	627,846 (5.49)	732,842 (5.82)
Household tenancy (%)	Owned: owned outright	3,805,386 (33.28)	4,176,836 (33.17)
	Owned: owned with a mortgage or loan	4,813,630 (42.09)	5,184,751 (41.18)
	Shared ownership	69,778 (0.61)	80,666 (0.64)
	Social rented from council	817,907 (7.15)	869,315 (6.90)
	Other social rented	618,705 (5.41)	832,543 (6.61)
	Private rented	1,165,317 (10.19)	1,287,594 (10.23)
	Living rent free	102,731 (0.90)	109,726 (0.87)
	No code required	42,516 (0.37)	49,706 (0.39)
Type of accommodation (%)	Detached	3,451,424 (30.18)	3,346,919 (26.58)
	Semi-detached	3,936,483 (34.42)	4,280,589 (34.00)

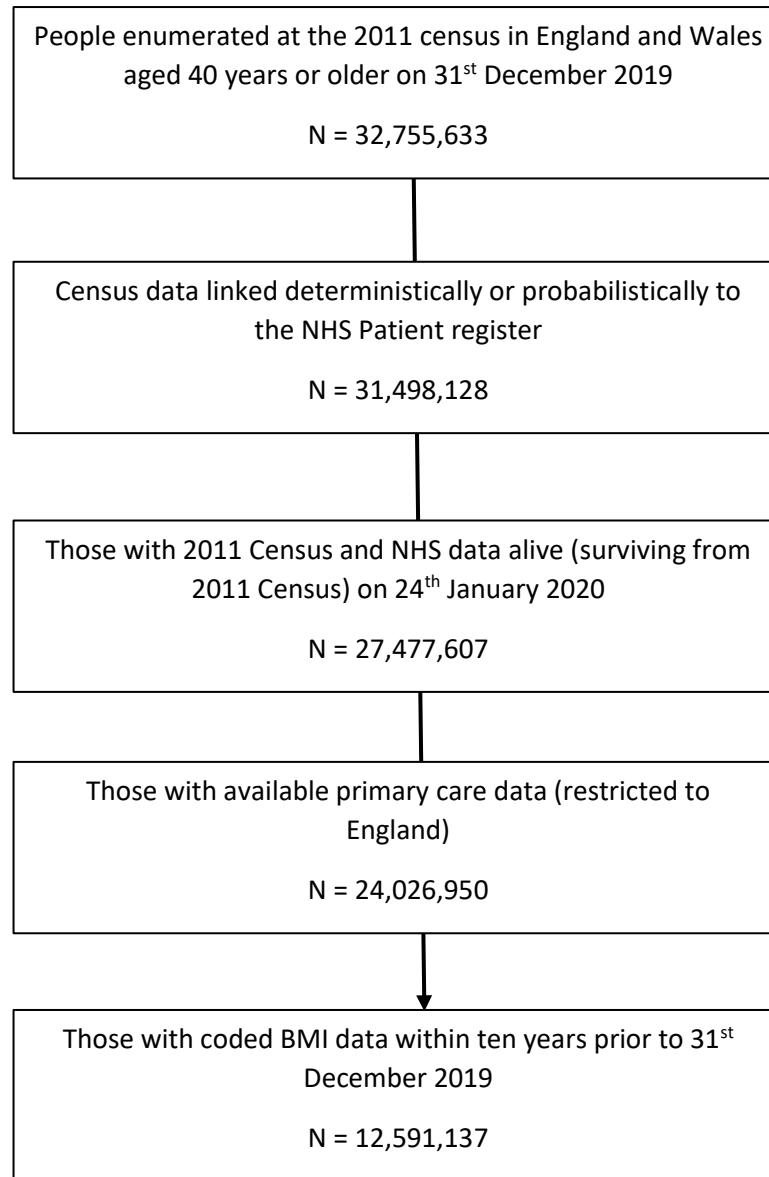
	Terraced	2,647,830 (23.15)	3,045,169 (24.19)
	Flat (purpose built)	927,016 (8.11)	1,311,511 (10.42)
	Flat (converted)	234,296 (2.05)	341,713 (2.71)
	Flat (commercial building)	66,691 (0.58)	79,581 (0.63)
	Other	36,999 (0.32)	40,651 (0.32)
	No code	135,231 (1.18)	145,004 (1.15)
Household size (%)	1-2	7,277,431 (63.64)	7,908,032 (62.81)
	3-4	3,576,237 (31.27)	3,985,460 (31.65)
	5-6	403,703 (3.53)	495,756 (3.94)
	7+	43,368 (0.38)	56,885 (0.45)
	Missing	135,231 (1.18)	145,004 (1.15)
Multigenerational household (%)	No	10,054,231 (87.92)	10,963,173 (87.07)
	Yes	1,246,508 (10.90)	1,482,960 (11.78)
	No code	135,231 (1.18)	145,004 (1.15)
Household with children (%)	Yes	2,232,421 (19.52)	2,497,492 (19.84)
Overcrowded (%)	Yes	648,996 (5.68)	875,471 (6.95)
Key worker type (%)	Education and childcare	708,038 (6.19)	811,577 (6.45)
	Food and necessary goods	92,675 (0.81)	76,209 (0.61)
	Health and social care	856,170 (7.49)	952,736 (7.57)
	Key public services	173,130 (1.51)	205,401 (1.63)
	National and Local Government	93,822 (0.82)	112,471 (0.89)
	Not keyworker	9,061,425 (79.24)	9,947,345 (79.00)
	Public safety and national security	163,166 (1.43)	168,198 (1.34)
	Transport	139,617 (1.22)	142,941 (1.14)
	Utilities and communication	147,927 (1.29)	174,259 (1.38)
Key worker in household (%)	No code	135,231 (1.18)	145,004 (1.15)
	No	7,411,170 (64.81)	8,142,092 (64.67)
	Yes	3,889,569 (34.01)	4,304,041 (34.18)
Proximity to others* (mean [SD])		58.49 (19.41)	58.01 (20.02)
Exposure to disease* (mean [SD])		19.16 (21.12)	19.24 (21.2)
Chronic Kidney disease (%)	None, CKD 1-2	11,267,353 (98.53)	12,259,694 (97.37)
	CKD 3	146,007 (1.28)	287,774 (2.29)
	CKD 4	14,677 (0.13)	30,230 (0.24)

	CKD 5	7,933 (0.07)	13,439 (0.11)
Learning disability (%)	No	11,307,924 (98.88)	12,439,251 (98.79)
	Learning disability	125,410 (1.10)	147,678 (1.17)
	Down's syndrome	2,636 (0.02)	4,208 (0.03)
Cancer and immunosuppression (%)	Blood cancer	145,712 (1.27)	166,064 (1.32)
	Respiratory cancer	4,309 (0.04)	5,163 (0.04)
	Taking immunosuppressants	3,377 (0.03)	3,501 (0.03)
	Taking anti-leukotriene or long acting beta2-agonists	941,990 (8.24)	1,103,917 (8.77)
	Taking oral steroids in the last 6 months	179,500 (1.57)	202,123 (1.61)
Other comorbidities (%)	Cerebral Palsy	1,574 (0.01)	1,939 (0.02)
	Asthma	1,227,304 (10.73)	1,534,364 (12.19)
	Atrial Fibrillation	497,090 (4.35)	590,033 (4.69)
	Coronary heart disease	703,165 (6.15)	839,975 (6.67)
	COPD	479,764 (4.20)	567,190 (4.50)
	Cystic fibrosis or bronchiectasis or alveolitis	155,800 (1.36)	195,170 (1.55)
	Dementia	194,006 (1.70)	220,041 (1.75)
	Diabetes	1,268,015 (11.09)	1,584,898 (12.59)
	Epilepsy	121,092 (1.06)	151,120 (1.20)
	Heart failure	248,579 (2.17)	290,160 (2.30)
	Liver cirrhosis	35,152 (0.31)	43,515 (0.35)
	Neurological disease	11,339 (0.10)	13,601 (0.11)
	Parkinson's disease	51,350 (0.45)	61,893 (0.49)
	Peripheral vascular disease	137,143 (1.20)	164,803 (1.31)
	Fracture of hip, wrist, spine or humerus	10,999 (0.10)	18,031 (0.14)
	Rheumatoid arthritis or SLE	133,379 (1.17)	165,112 (1.31)
	Severe mental illness	2,220,379 (19.42)	2,413,101 (19.17)
	Solid organ transplant	1,296 (0.01)	1,527 (0.01)
	Stroke or TIA	407,668 (3.56)	483,295 (3.84)
	Thrombosis or pulmonary embolus	2,458 (0.02)	3,172 (0.03)

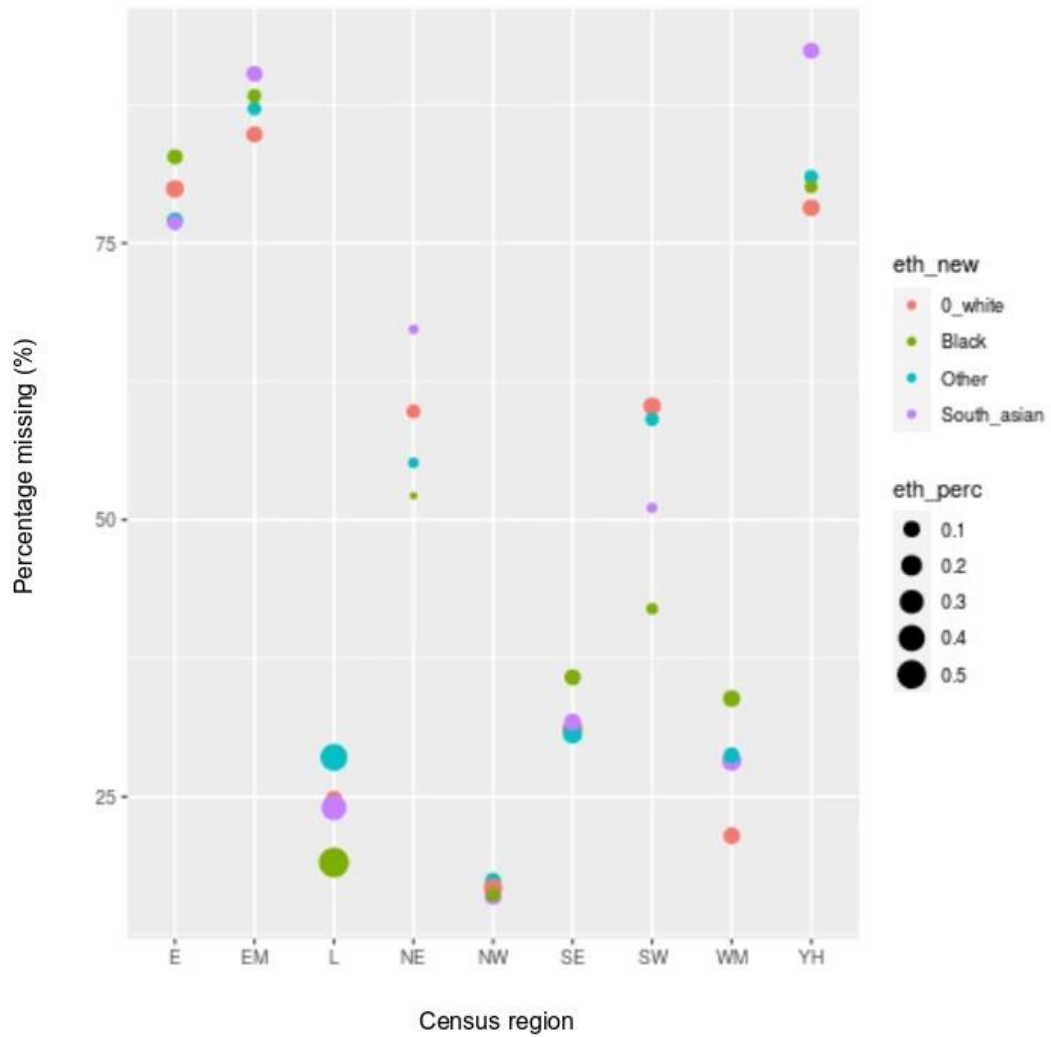
Data as number (column %) or mean (SD).

* = score from 0 (no exposure) to 100 (maximum exposure).

eFigure 1. Flow diagram of cohort.



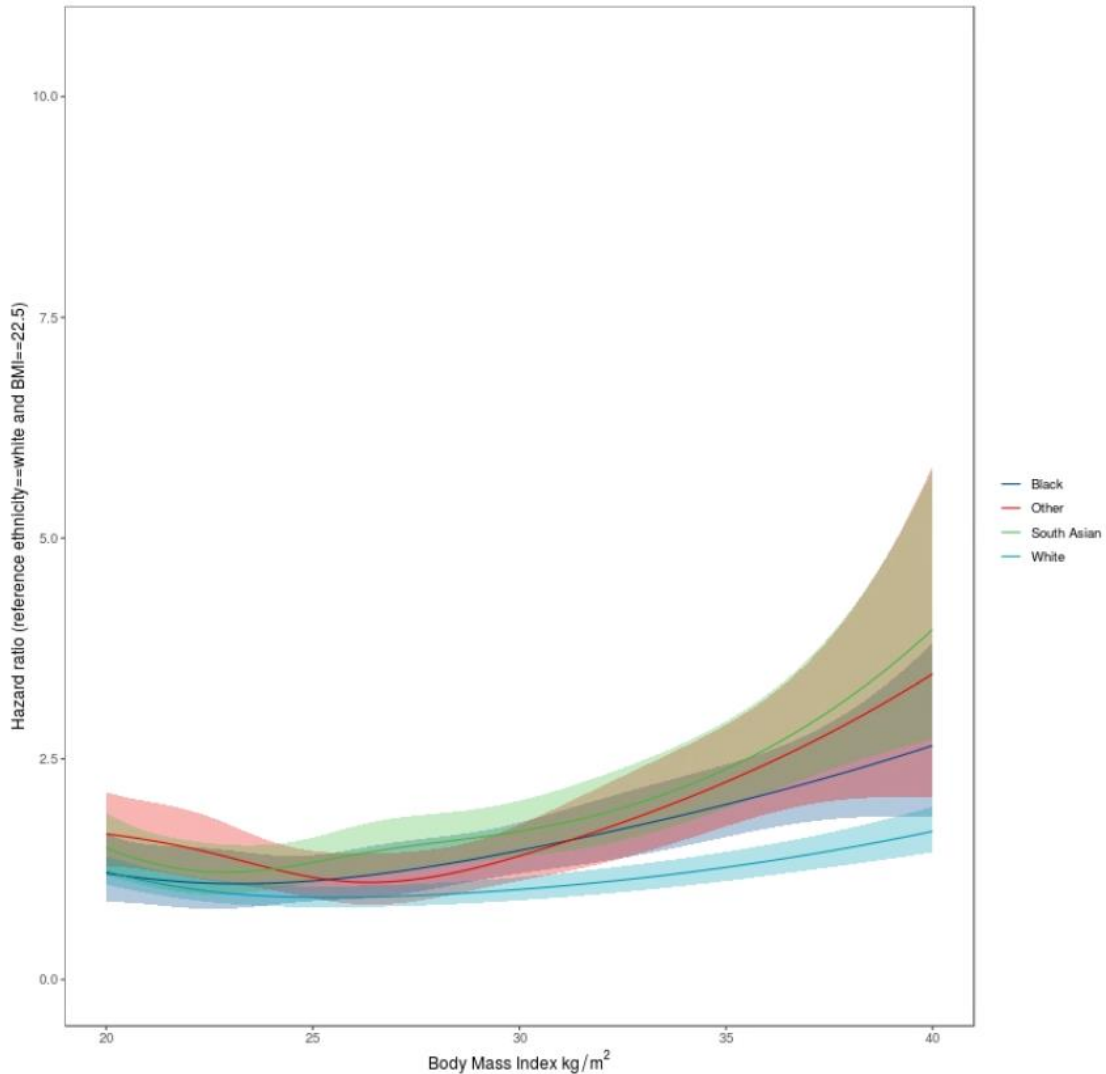
eFigure 2. Percentage of missing BMI data in each ethnic group by region.



E: East of England; EM: East Midlands; L: London; NE: North East; NW: North West; SE: South East; SW: South West; WM: West Midlands; YH: Yorkshire and Humber.

The size of dot is proportional to the number of people within that specific ethnic group across all nine regions (proportion = 1).

eFigure 3. Association of BMI with COVID-19 mortality by ethnicity in women.

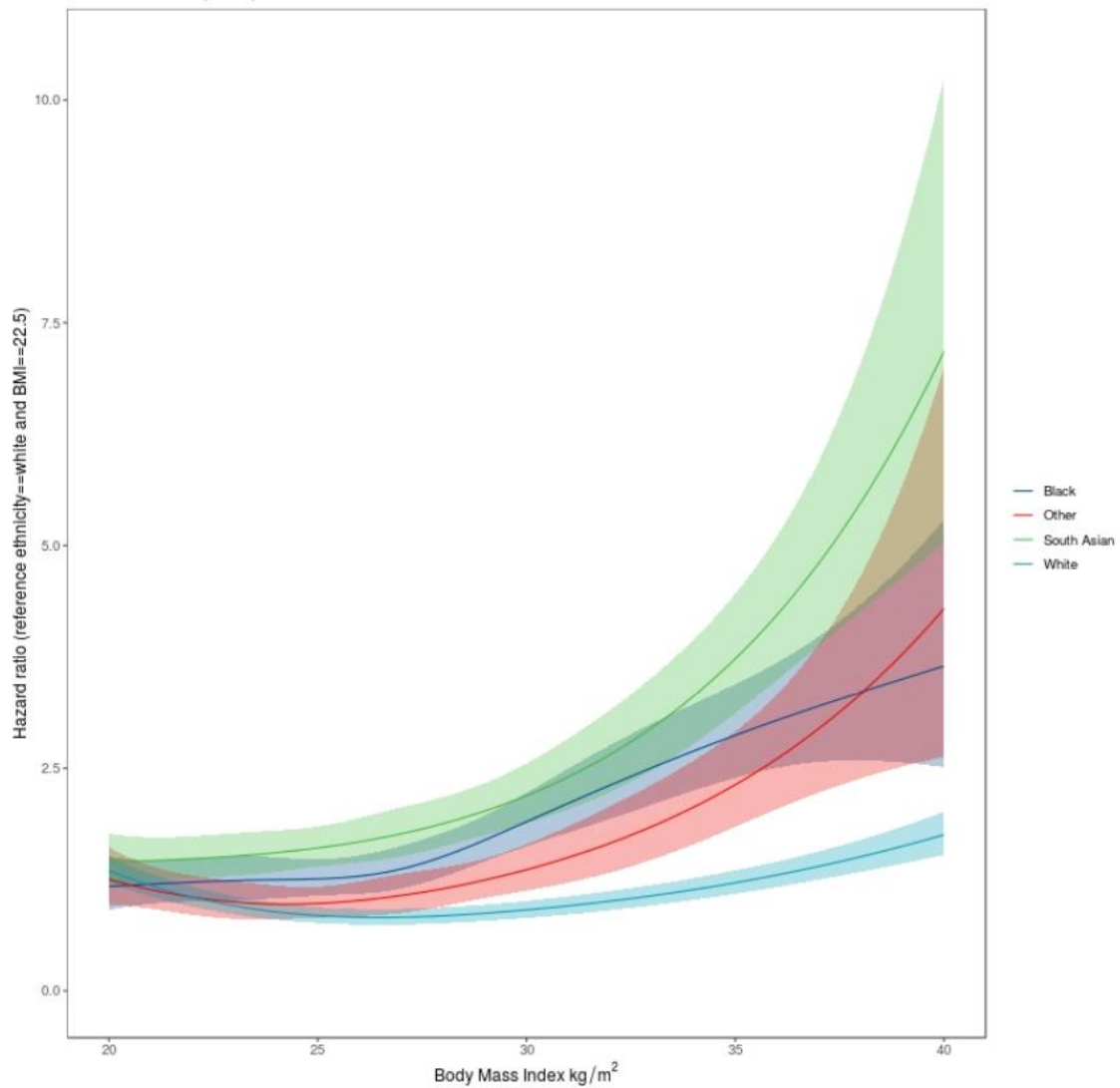


Association of body mass index (BMI) with COVID-19 mortality in white, black, South Asian and 'other' ethnicity women. Hazard ratio (HR) for COVID-19 mortality with BMI stratified by ethnic groups.

Reference (HR 1) were placed at BMI of 22.5 kg/m² for white individuals. HR (lines) and confidence intervals (CI; areas) are plotted across continuous BMI values (x axes) between the 2.5th (20 kg/m²) and 97.5th (40 kg/m²) centile of the distribution. Shaded area as 95% CI.

Analysis adjusted for: age, sex, region and sociodemographic factors (Model 1 – detailed in Supplementary eTable 1).

eFigure 4. Association of BMI with COVID-19 mortality by ethnicity in men.

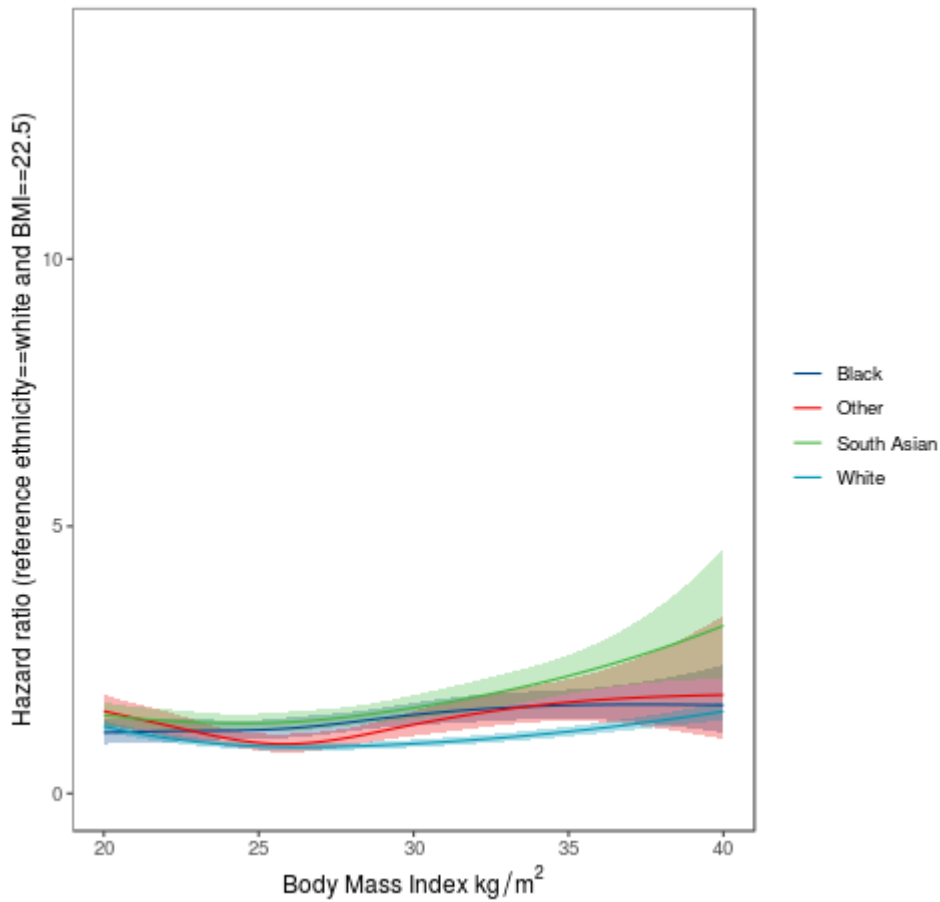


Association of body mass index (BMI) with COVID-19 mortality in white, black, South Asian and 'other' ethnicity men. Hazard ratio (HR) for COVID-19 mortality with BMI stratified by ethnic groups.

Reference (HR 1) were placed at BMI of 22.5 kg/m² for white individuals. HR (lines) and confidence intervals (CI; areas) are plotted across continuous BMI values (x axes) between the 2.5th (20 kg/m²) and 97.5th (40 kg/m²) centile of the distribution. Shaded area as 95% CI.

Analysis adjusted for: age, sex, region and sociodemographic factors (Model 1 –detailed in Supplementary eTable 1).

eFigure 5. Association of BMI with COVID-19 mortality by ethnicity: individuals 70 years or greater.

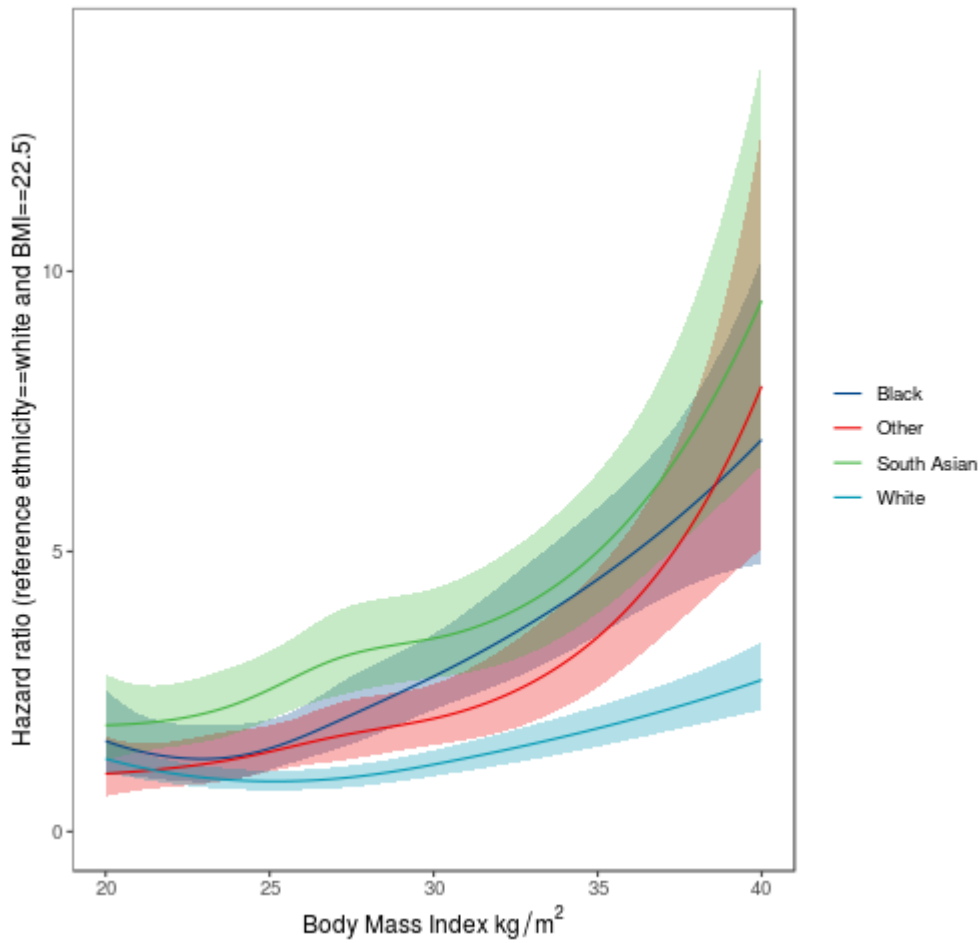


Association of body mass index (BMI) with COVID-19 mortality in white, black, South Asian and 'other' ethnicity individuals. Hazard ratio (HR) for COVID-19 mortality with BMI stratified by ethnic groups.

Reference (HR 1) were placed at BMI of 22.5 kg/m² for white individuals. HR (lines) and confidence intervals (CI; areas) are plotted across continuous BMI values (x axes) between the 2.5th (20 kg/m²) and 97.5th (40 kg/m²) centile of the distribution. Shaded area as 95% CI.

Analysis adjusted for: age, sex, region and sociodemographic factors (Model 1 –detailed in Supplementary eTable 1).

eFigure 6. Association of BMI with COVID-19 by ethnicity: individuals younger than 70 years.

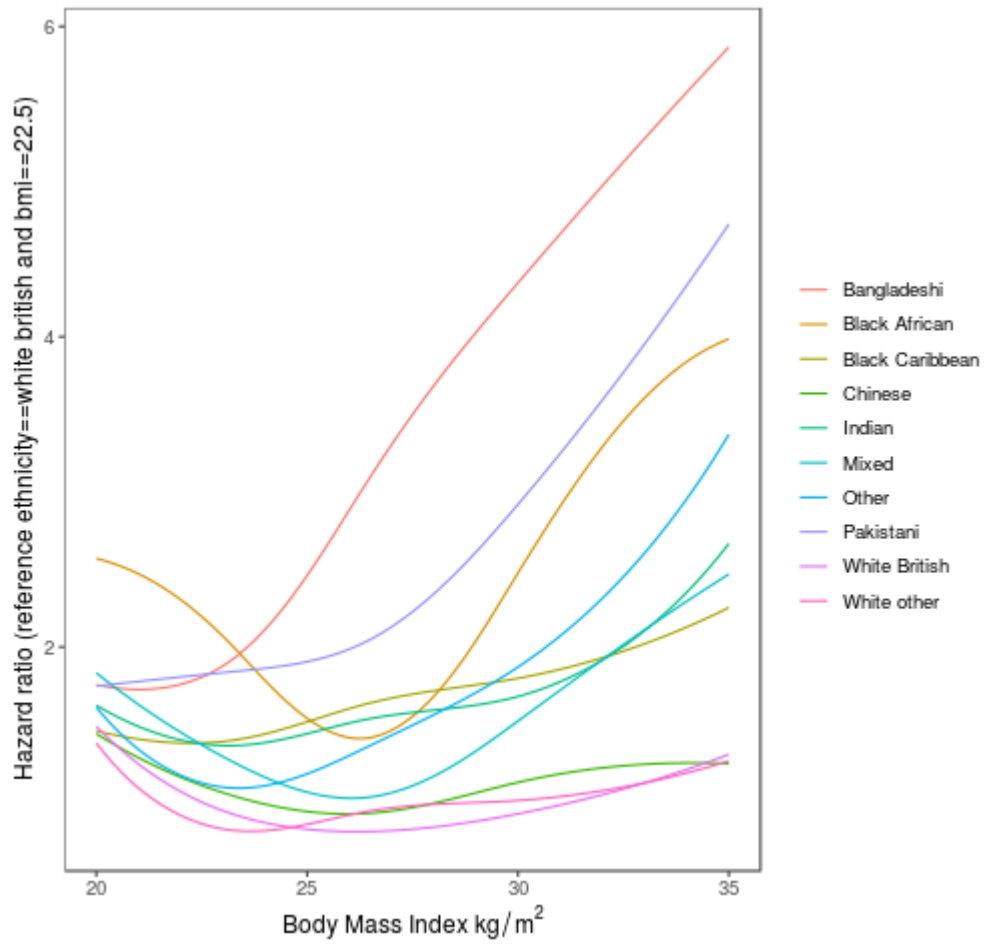


Association of body mass index (BMI) with COVID-19 mortality in white, black, South Asian and 'other' ethnicity individuals. Hazard ratio (HR) for COVID-19 mortality with BMI stratified by ethnic groups.

Reference (HR 1) were placed at BMI of 22.5 kg/m² for white individuals. HR (lines) and confidence intervals (CI; areas) are plotted across continuous BMI values (x axes) between the 2.5th (20 kg/m²) and 97.5th (40 kg/m²) centile of the distribution. Shaded area as 95% CI.

Analysis adjusted for: age, sex, region and sociodemographic factors (Model 1 – detailed in Supplementary eTable 1)

eFigure 7. Association of BMI with COVID-19 mortality across ten ethnic categories.



Analysis adjusted for: age, sex, region and sociodemographic factors (Model 1: detailed in Supplementary eTable 1)