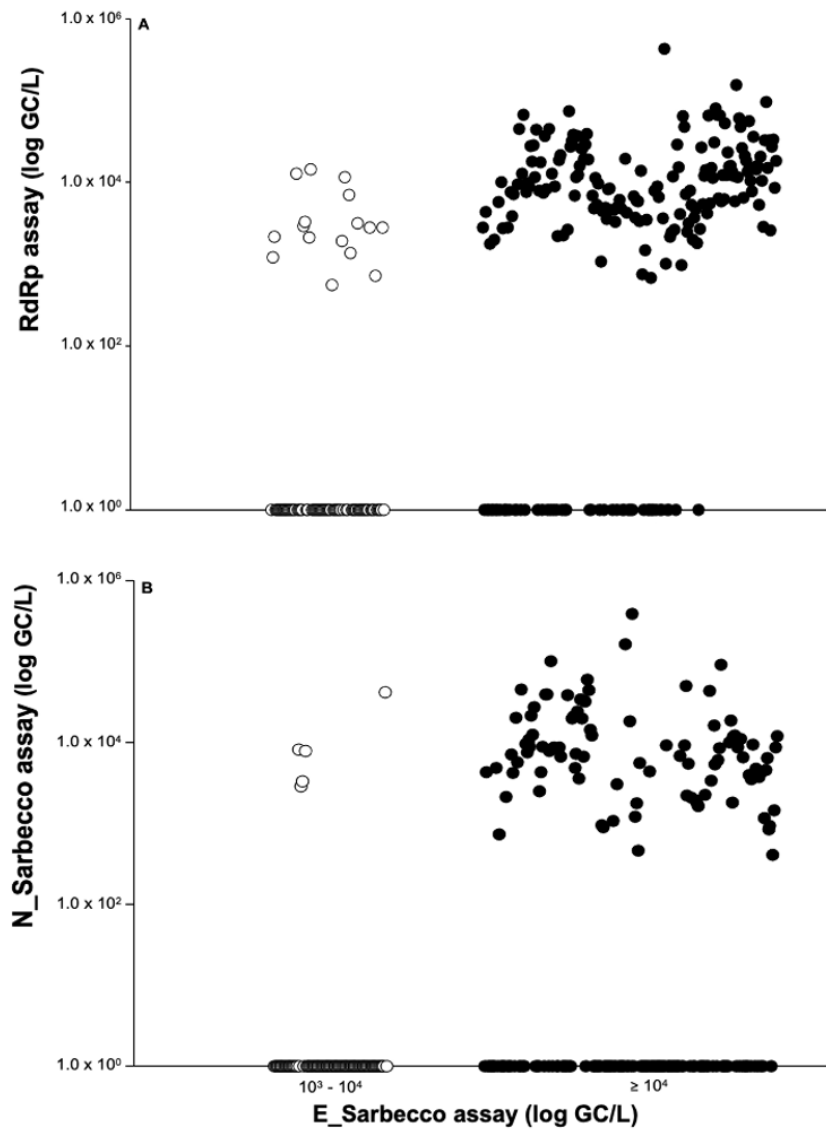


**Table S1.** Description of the WWTPs sampled in this study.

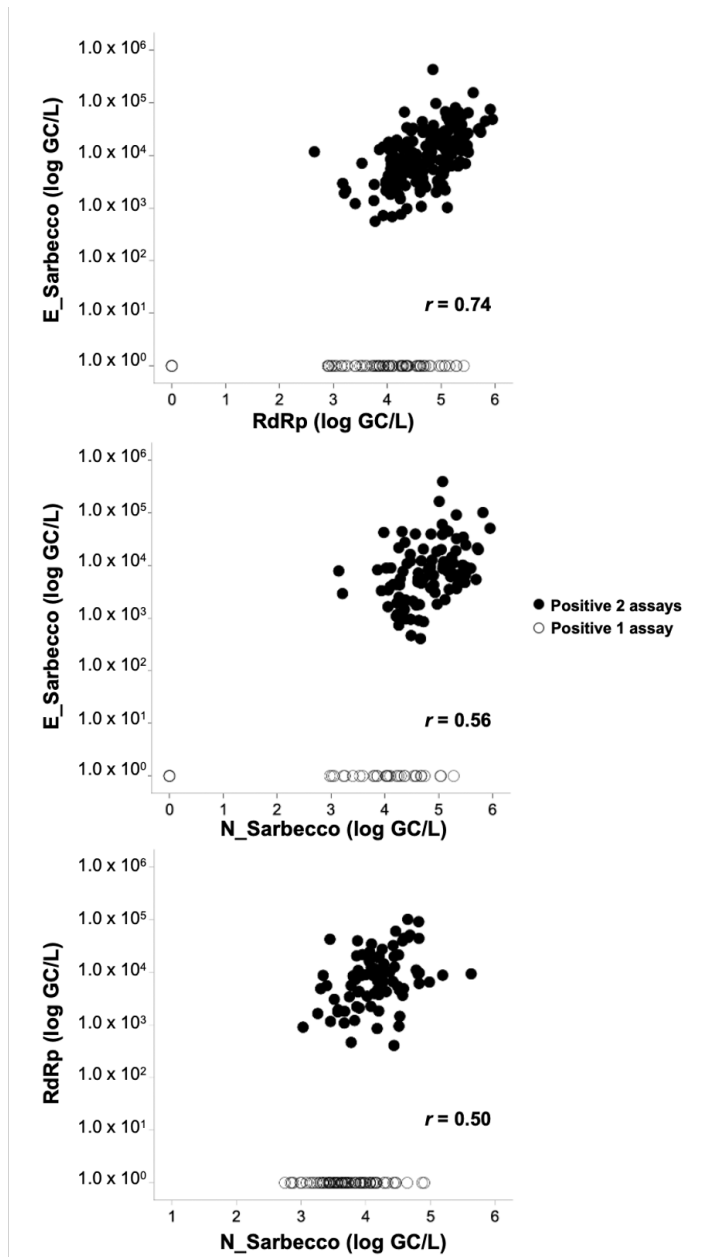
WWTP	Projected Flow (m <sup>3</sup> /day)	Mean Flow (m <sup>3</sup> /day)	Estimated Population served	Municipalities served (% of population served by WWTP)
Alcântara	181,453	122,127	756,000	Amadora (45%) Lisbon (55%) Oeiras (19%)
Beirolas	54,500	36,746	213,510	Lisbon (12%) Loures (46%)
Guia	172,800	185,235	903,000	Amadora (46%) Cascais (98%) Oeiras (64%) Sintra (89%)
Gaia Litoral	66,700	36,845	300,000	Vila Nova de Gaia (57%)
Serzedelo	25,577	18,778	180,548	Guimarães (50%) Póvoa do Lanhoso (3%) Vila Nova de Famalicão (1%)



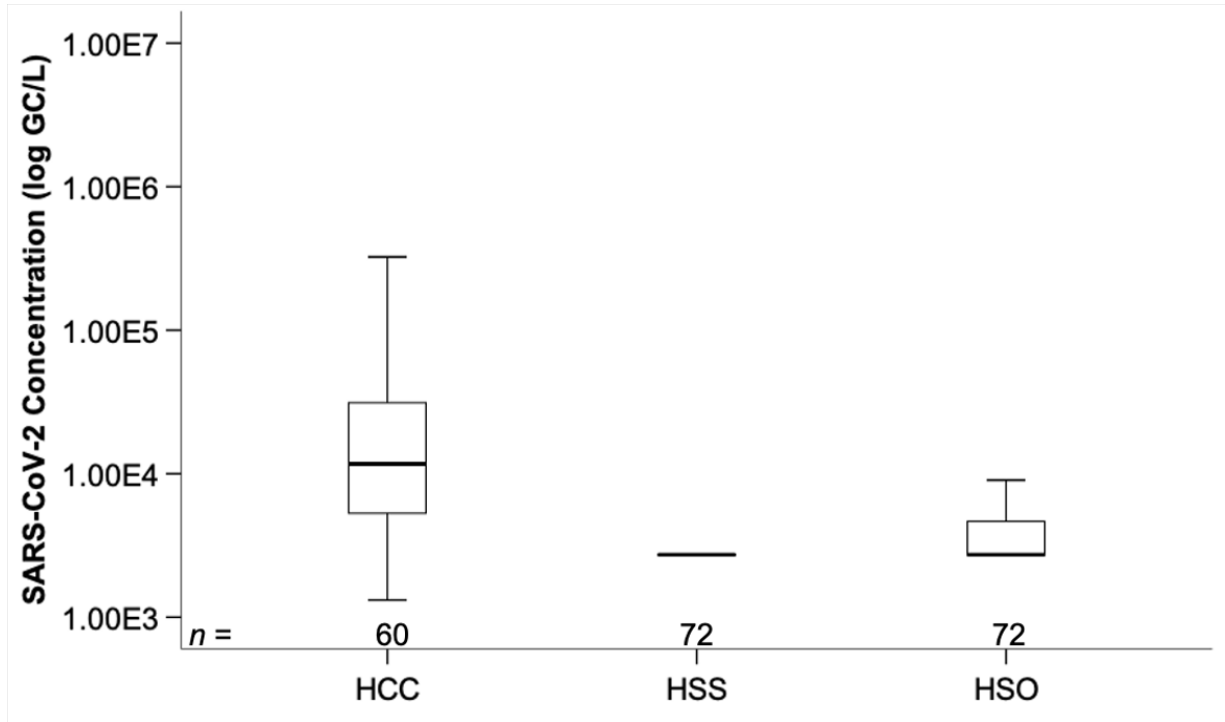
**Fig. S1.** Sampling location of the five WWTPs (bullets) and three COVID-19 hospitals (stars) monitored in this study.



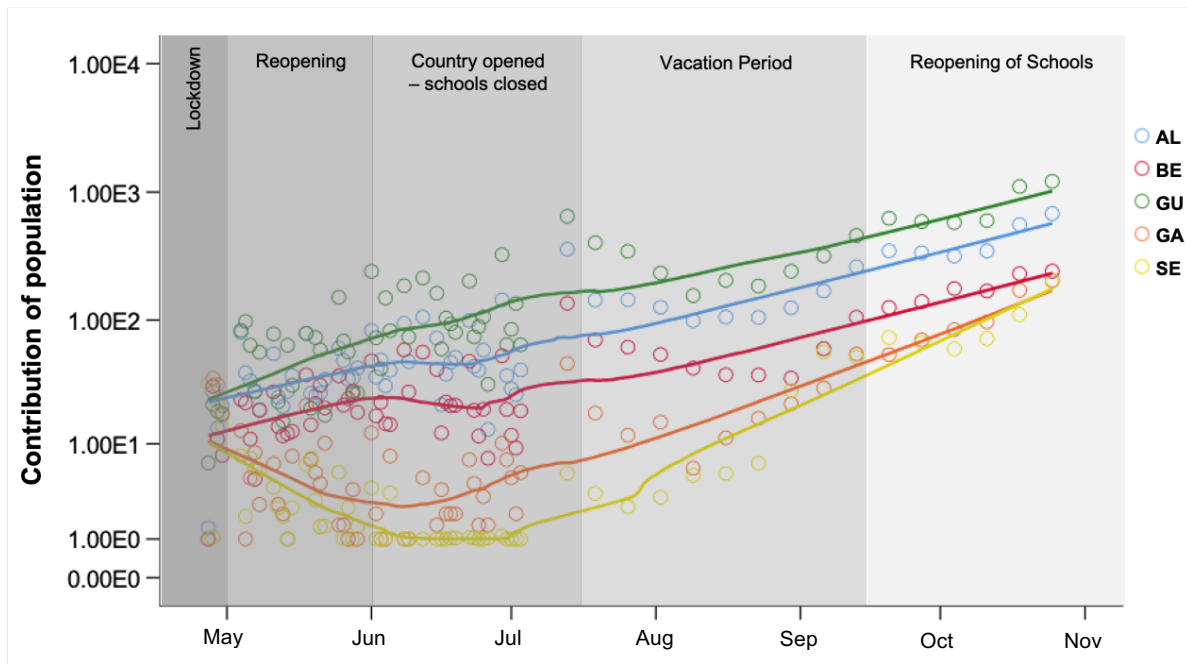
**Fig. S2.** Relationship between SARS-CoV-2 RNA concentration as detected by the E\_Sarbeco assay and the levels of detection for the (A) RdRp assay and (B) N\_Sarbeco assay. White dots represent samples positive for both assays, with E\_Sarbeco assay concentration varying between  $10^3$ - $10^4$  GC/L, while black dots represent samples positive for both assays at concentrations above  $10^4$  GC/L as measured by the E\_Sarbeco assay.



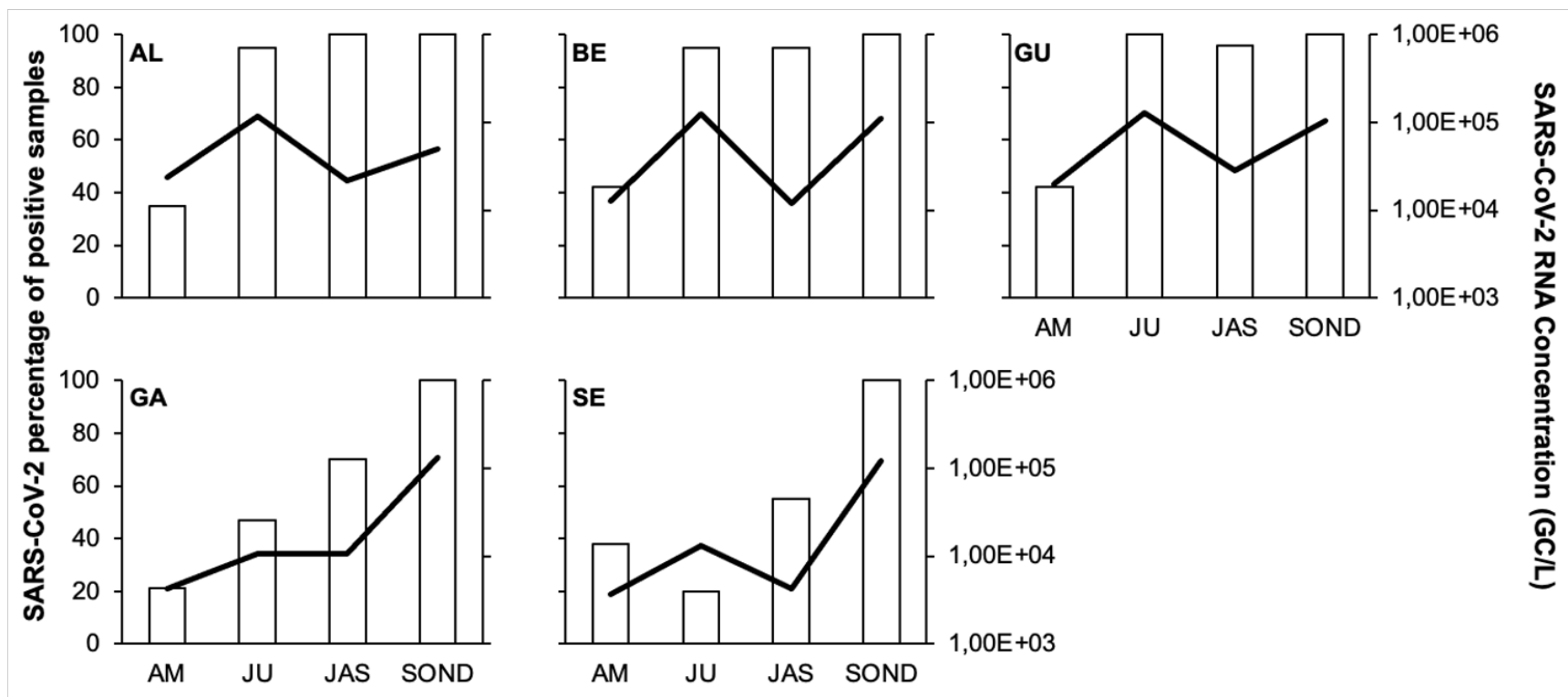
**Fig. S3.** Quantitative relationship of: E\_Sarbeco assay vs RdRp assay (A), E\_Sarbeco assay vs N\_Sarbeco assay (B), and RdRp assay vs N\_Sarbeco assay (C). Black dots correspond to samples positive for both assays, and white dots correspond to samples positive for a single assay. The coefficients for Spearman rank correlation order are given in the figure



**Fig. S4.** Concentration of SARS-CoV-2 RNA determined at the three tested reference COVID-19 hospitals. HCC – Hospital Curry Cabral, HSS – Hospital Santos Silva, HSO -Hospital Sra. Oliveira.



**Fig. S5.** Contribution of population to each WWTPs. The incidence rate at each WWTP was calculated by using the daily number of cases at each service area and using the percentage contribution (%) from each town to the WWTP. ALC – Alcântara; BE – Beirolas; GU – Guia; GA – Gaia Litoral; SE - Serzedelo



**Fig. S6.** Percentage of raw wastewater samples positive for SARS-CoV-2 and SARS-CoV-2 RNA geometric mean concentration in each WWTP (non-detected values and positive samples below the LoD were substituted by the LoD). AM- April-May; JU – June; JAS – July-August- until mid-September; SON – mid-September until the end of the study.

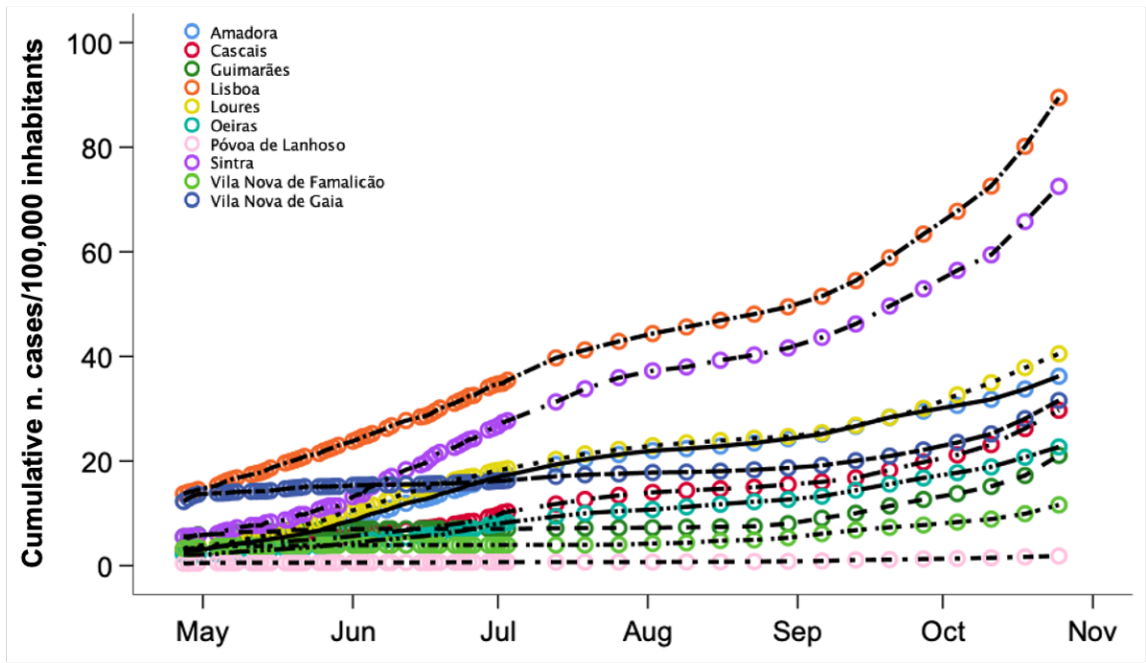


Fig. S7. Cumulative number of COVID-19 cases standardized by 100,000 population for the study period.