

1 **Typically asymptomatic but with robust**
2 **antibody formation: Children’s unique humoral**
3 **immune response to SARS-CoV-2:**

4 **Supplementary Appendix**

5

6 **Supplementary Contents**

7	List of investigators	2
8	Supplementary Methods	4
9	Supplementary Figures	10
10	Supplementary Tables	28
11	Supplementary References	32

12

13 **List of investigators**

14 Hanna Renk MD^{1*}, Alex Dulovic Dr.rer.nat^{2*}, Matthias Becker M.Sc², Dorit Fabricius MD³,
15 Maria Zernickel³, Daniel Junker M.Sc², Alina Seidel M.Sc⁴, Rüdiger Groß M.Sc⁴, Alexander
16 Hilger M.Sc⁵, Sebastian Bode MD³, Linus Fritsch⁵, Pauline Frieh⁵, Anneke Haddad DPhil⁵,
17 Tessa Görne⁵, Jonathan Remppis MD¹, Tina Ganzemueller MD⁷, Andrea Dietz Dr.biol.hum⁶,
18 Daniela Huzly MD⁸, Hartmut Hengel MD⁸, Klaus Kaier PhD⁹, Susanne Weber PhD⁹, Eva-
19 Maria Jacobsen PhD³, Philipp D. Kaiser Dr.rer.nat², Bjoern Traenkle Dr.rer.nat², Ulrich
20 Rothbauer Dr.rer.nat², Maximilian Stich MD¹⁰, Burkhard Tönshoff¹⁰, Georg F. Hoffmann¹⁰,
21 Barbara Müller PhD^{10,11}, Carolin Ludwig^{12,13,14}, Bernd Jahrsdörfer MD^{12,13,14}, Hubert
22 Schrezenmeier MD^{12,13,14}, Andreas Peter MD¹⁵, Sebastian Hörber MD¹⁵, Thomas Iftner PhD⁷,
23 Jan Münch PhD⁴, Thomas Stamminger MD⁶, Hans-Jürgen Groß MD¹⁶, Martin Wolkewitz
24 PhD⁹, Corinna Engel Dr.biol.hum^{1,17}, Marta Rizzi MD¹⁸, Philipp Henneke MD^{5,19}, Axel R.
25 Franz MD^{1,17}, Klaus-Michael Debatin MD³, Nicole Schneiderhan-Marra Dr.rer.nat², Ales
26 Janda MD^{3,#} and Roland Elling MD^{5,19,#,†}

27 1 – University Children’s Hospital Tübingen, Tübingen, Germany

28 2 – NMI Natural and Medical Sciences Institute at the University of Tübingen, Reutlingen,
29 Germany

30 3 – Department of Pediatrics and Adolescent Medicine, Ulm University Medical Center, Ulm
31 University, Ulm, Germany

32 4 – Institute of Molecular Virology, Ulm University, Ulm, Germany

33 5 – Center for Pediatrics and Adolescent Medicine, Medical Center Freiburg, Germany and
34 Faculty of Medicine, University of Freiburg, Freiburg, Germany

35 6 – Institute of Virology, Ulm University Medical Center, Ulm, Germany

36 7 – Institute for Medical Virology and Epidemiology of Viral Diseases, University Hospital
37 Tübingen, Tübingen, Germany

38 8 – Institute of Virology, University Medical Center Freiburg, Germany and Faculty of
39 Medicine, University of Freiburg, Freiburg, Germany

40 9 – Institute of Medical Biometry and Statistics, Faculty of Medicine and Medical Center,
41 University of Freiburg, Freiburg, Germany

42 10 – Department of Pediatrics I, University Children’s Hospital Heidelberg, Heidelberg,
43 Germany

44 11 - Department of Infectious Diseases, Virology, Heidelberg University, Heidelberg,
45 Germany

46 12 – Department of Transfusion Medicine, Ulm University, Ulm, Germany

47 13 – Institute for Clinical Transfusion Medicine and Immunogenetics

48 14– German Red Cross Blood Transfusion Service, Baden-Württemberg, Germany

49 15 – Institute for Clinical Chemistry and Pathobiochemistry, University Hospital Tübingen,
50 Tübingen, Germany

51 16 – Institute of Clinical Chemistry, Ulm University, Ulm, Germany

52 17 – Center for Pediatric Clinical Studies, University Hospital Tübingen, Tübingen, Germany

53 18 - Department of Rheumatology and Clinical Immunology, Freiburg University Medical
54 Center, Faculty of Medicine, University of Freiburg, Freiburg, Germany

55 19 – Institute for Immunodeficiency, University Medical Center Freiburg, Freiburg, Germany

56

57 *indicates shared first authorship

58 #indicates shared last authorship

59 †indicates corresponding author

60

61 **Supplementary Methods**

62 Study Design

63 We did a secondary analysis of a non-interventional, prospective observational national
64 multi-center cohort study, including 548 children and 717 adults within 328 households with
65 at least one SARS-CoV-2 RT-PCR-confirmed or one seropositive, symptomatic individual.
66 Due to restrictions in obtaining a SARS-CoV-2 RT-PCR test during the first wave (children
67 and asymptomatic contacts of an index case were not tested routinely), serological assays
68 were the only means to identify previous infection. This study was initiated by the four
69 University Children's Hospitals of Freiburg, Heidelberg, Tübingen and Ulm and approved by
70 the independent ethics committees of each center. Sera and data for this substudy were
71 collected at the study sites in Freiburg, Tübingen and Ulm. Participants were asked to fill a
72 questionnaire at time point 1 (May– August 2020) and follow-up time point 2 (February-
73 March 2021).

74

75 Study Participants and Eligibility Criteria

76 Families were identified during the first wave of the pandemic between May and August
77 2020 in the region of Baden-Württemberg, Germany.

78

79 Inclusion and exclusion criteria were as follows:

80 Subjects were eligible for enrolment if they met the following inclusion criteria:

- 81 (i) Children (male or female) aged 1 to 18 years,
- 82 (ii) parents and other adults (male or female) living in the same household with the
83 investigated children (without age limit),
- 84 (iii) residency in the state of Baden-Württemberg,
- 85 (iv) written consent to the study.

86

87

88 Key exclusion criteria were

89 (i) severe congenital diseases (e.g. infantile cerebral palsy, severe congenital malformations)

90 (ii) congenital or acquired immunodeficiencies,

91 (iii) insufficient comprehension of German.

92

93 Data Collection

94 Children and adults within eligible households completed a questionnaire containing
95 demographic information (date of birth, gender, height, weight, smoking), the presence of
96 symptoms (fever, cough, dysgeusia or diarrhea) in plausible temporal association (max. 2
97 weeks prior or later) with the onset of the SARS-CoV-2 infection within the household or
98 around the time of a positive SARS-CoV-2 RT-PCR, and symptom duration. They
99 additionally provided serum samples for immunological analysis at time point 1 and at follow-
100 up time point 2 after the SARS-CoV-2 infection within the household. Data on vaccination
101 and potential re-infection within the household were collected at time point 2. We
102 investigated all invited households with at least one child to avoid selection bias.
103 Questionnaires were checked for missing or inadequate data and inconsistencies; where
104 possible, these points were clarified retrospectively with the families. To predetermine the
105 sample size, we used a one-factor variance analysis design. Assuming 1.5 children per
106 household participating in the study and 3 different age ranges, we aimed at a sample size of
107 approximately 200 households to reveal small effect sizes of about 0.1 at a significance level
108 of 5% and a test strength of 80%.

109

110 Data variables

111 Samples were defined as being “symptomatic” on the basis of having at least one of four
112 (fever, cough, diarrhea and dysguesia) symptoms, in addition to a positive serology result.
113 “Asymptomatic” samples were defined as those without any of the above symptoms and a
114 positive serology result. For some households (n=272) an “index case” was defined. This is
115 the first household member to test positive for SARS-CoV-2 by RT-PCR. No index was

116 defined for households where additional household members tested positive by RT-PCR
117 within 48 hours of the first positive test or where infection was identified by the combination
118 of positive serology and symptoms only. If a household had a defined index case, then all
119 other household members were considered “exposed”. “Time post symptom onset” within a
120 household was calculated as the number of days between the first date of symptom onset in
121 any seropositive individual within a household and the sampling date at T1 and T2
122 respectively.

123

124 Blood Sample Collection

125 Blood samples were collected by venipuncture from all consenting adults and children within
126 the study. Serum was separated on the same day by centrifugation, aliquoted and frozen at -
127 80°C until used.

128

129 EuroImmune Anti-SARS-CoV-2 ELISA

130 The EuroImmune Anti-SARS-CoV-2 ELISA (IgA and IgG) was performed as the
131 manufacturer’s instructions to detect IgG or IgA antibodies against the S1 domain of the
132 SARS-CoV-2 spike protein. All 2236 samples used in the final analysis were measured with
133 this assay. All samples were processed with the specified controls and calibrators.
134 Serological analysis was performed blinded for all clinical covariables.

135

136 Siemens Healthineers SARS-CoV-2 IgG (sCOVG)

137 The Siemens sCOVG assay was performed as per the manufacturer’s instructions on an
138 Advia Centaur XPT platform to detect IgG antibodies against the receptor-binding-domain
139 (RBD) of the SARS-CoV-2 spike protein. All 2236 samples used in the final analysis were
140 measured with this assay. All samples were processed with the specified controls and
141 calibrators. Serological analysis was performed blinded for all clinical covariables.

142

143 Roche Elecsys Electrochemiluminescence immunoassay (ECLIA)

144 The Roche Elecsys ECLIA was performed as per the manufacturer's instruction on a Cobas
145 e411 or e811 platform to detect IgG, IgA and IgM antibodies against the nucleocapsid of
146 SARS-CoV-2. All 2236 samples used in the final analysis were measured with this assay. All
147 samples were processed with the specified controls and calibrators. Serological analysis was
148 performed blinded for all clinical covariables.

149

150 MULTICOV-AB™

151 All 2236 samples used in the final analysis were analyzed using MULTICOV-AB™¹, a bead-
152 based multiplex immunoassay that simultaneously analyzes 23 antigens from SARS-CoV-2
153 (including RBDs from variants of concern and endemic human coronaviruses)¹. A full list of
154 antigens used in this study can be found in **Table S3**. Samples were measured in 384-well
155 plates, with all pipetting steps performed using a Beckmann Coulter i7 pipetting robot.
156 Antigens were coupled by EDC/s-NHS or Anteo coupling to spectrally distinct populations of
157 MagPlex beads (Luminex Technology). Samples were diluted in assay buffer (1:4 Low Cross
158 Buffer (Candor Bioscience GmbH) in CBS (1x PBS + 1% BSA) + 0.05% Tween20) and
159 added to bead mix to a final dilution factor of 1:400, before being incubated for 2 hours at
160 21°C on a thermomixer (1500rpm). Unbound antibodies were then removed by washing with
161 Wash buffer (1x PBS, 0.05% Tween20). Bound antibodies were detected using RPE-
162 conjugated human IgG (3 µg/mL) and IgA (5 µg/mL) (both Biozol) by incubation for 45 mins
163 at 21°C, 1800 rpm on a thermomixer. Following a further washing step, beads were
164 resuspended in 80µL of washing buffer and shaken briefly for 3 mins at 1500 rpm. Plates
165 were then measured using a FLEXMAP-3D (Luminex Technology) instrument with the
166 following settings: 60 µL, 80 s timeout, 35 events, Gate 7500-15000 and Reporter Gain:
167 Standard PMT. As quality control, three QC samples with known Median Fluorescence
168 Intensity (MFI) values were included on each plate.^{2,3} Eight wells for each QC sample plus 8
169 blank wells (negative control) were included on each 384-well plate. Additionally, control
170 beads coupled with human IgG, goat-anti-human IgG, human IgA and goat-anti-human IgA
171 were included in each well to act as controls for both sample addition and signal system

172 addition. To pass QC, each sample had to meet the minimum threshold for number of beads
173 per ID (35), have a sample and signal system control bead value within normal range and
174 pass plate-by-plate QC sample controls. Any plate or sample that failed QC was re-
175 measured (83/2390). Normalization values for each antigen were generated by dividing the
176 raw median fluorescence intensity (MFI) value by the mean plate-by-plate MFI of QC2 (IgG)
177 or QC3 (IgA). For SARS-CoV-2, normalization values >1 for the trimeric spike and wild-type
178 RBD indicate positivity. To reduce analytical variations, all samples were analyzed in the
179 same run. Serological analysis was performed blinded for all clinical covariables. Technical
180 questions regarding the MULTICOV-AB™ assay should be directed to
181 nicole.schneiderhan@nmi.de.

182

183 Surrogate SARS-CoV-2 Neutralization Test

184 A subset of 385 samples were analyzed for neutralization with the surrogate SARS-CoV-2
185 neutralization test (GenScript) as per the manufacturer's instructions and as published
186 previously⁴. Briefly, samples and controls were incubated with an HRP-conjugated RBD
187 fragment. Following this, the mixture was added to wells of a capture plate coated with
188 human ACE2 protein. The plate was then washed three times to remove any complexes or
189 non-bound antibodies. TMB was added and then stopped with the addition of a stop reagent.
190 The plate was then read by a microtiter plate reader at 450 nm. The absorbance of the
191 sample is inversely correlated with the amount of SARS-CoV-2 neutralizing antibodies.
192 Positive and negative controls served as internal assay quality controls. The test was
193 considered valid only if the OD450 for each control fell within the respective range
194 (OD450negative control > 1.0, OD450positive control < 0.3). For final interpretation, inhibition
195 rates were calculated as follows: Inhibition score (%) = $(1 - \frac{\text{OD value sample}}{\text{OD value negative control}}) \times 100\%$. Scores < 30% were considered
196 negative, scores $\geq 30\%$ were considered positive.

198

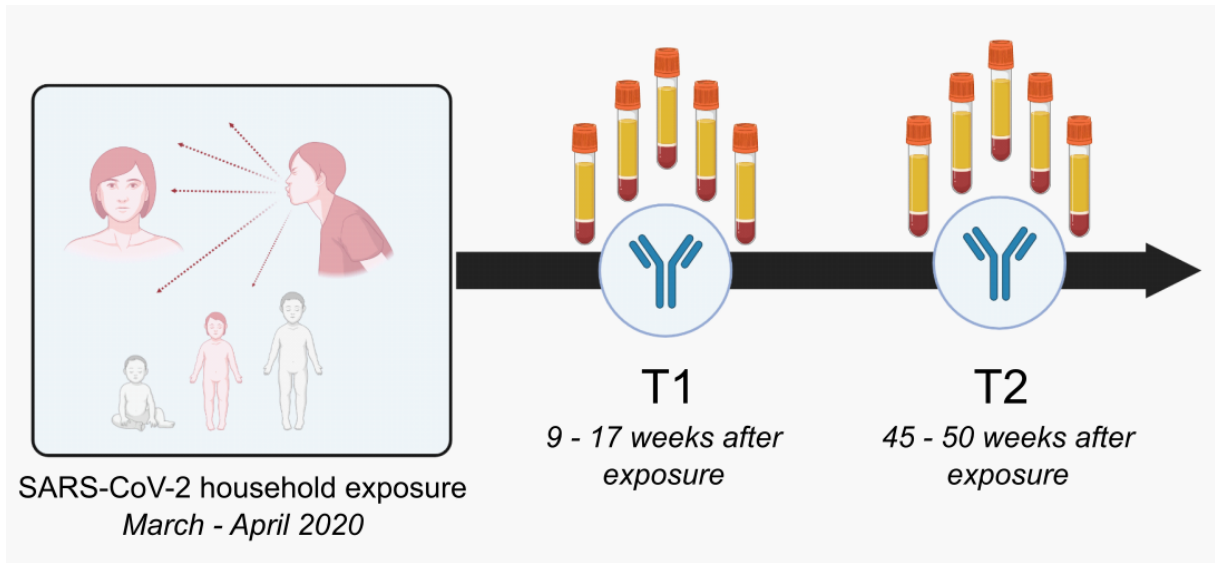
199

200 Data Analysis

201 Initial data collection was done using Microsoft Excel and Access. Formal data analysis was
202 performed on RStudio (Version 1.2.5001, running R 3.6.1) with the following additional
203 packages: “RColorBrewer”, “beeswarm”, “gplots”, “VennDiagram”, all of which were used
204 solely for data depiction and not statistical analysis. Figures were generated in RStudio and
205 then edited for clarity in Inkscape (Inkscape 0.92.4). Only samples for which full data for
206 MULTICOV-AB was available were included in the analysis. Furthermore, only samples from
207 time point 1 were used for all non-longitudinal analyses. For longitudinal analyses, only those
208 participants for whom both T1 and T2 samples were available were included and all
209 participants who were vaccinated prior to T2 were excluded. For analysis of potential cross-
210 protection though endemic coronaviruses, only households with a known index case were
211 used and the index case itself was excluded. Statistical analyses performed are described in
212 the figure legends. For comparison of signal distribution between sample groups, Mann-
213 Whitney-U tests were performed using the “wilcox.test” function from R’s “stats” library. For
214 correlation analysis, Spearman’s rank was calculated using the “cor” function from R’s “stats”
215 library. p-values <0.01 were considered to be significant.

216

217 **Supplementary Figures**



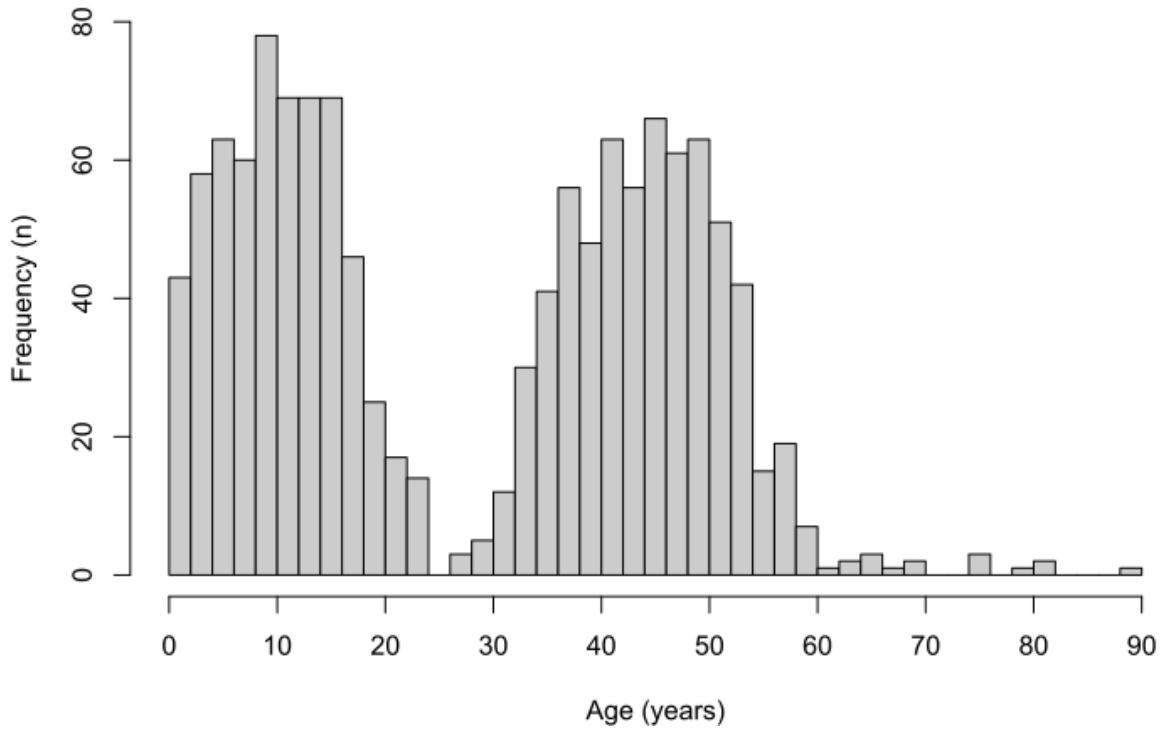
218

219 **Figure S1: Overview of the time points within the study population.** Illustration of study
220 design, from exposure to study participation time points. Times shown are the IQR for each
221 time point.

222

223

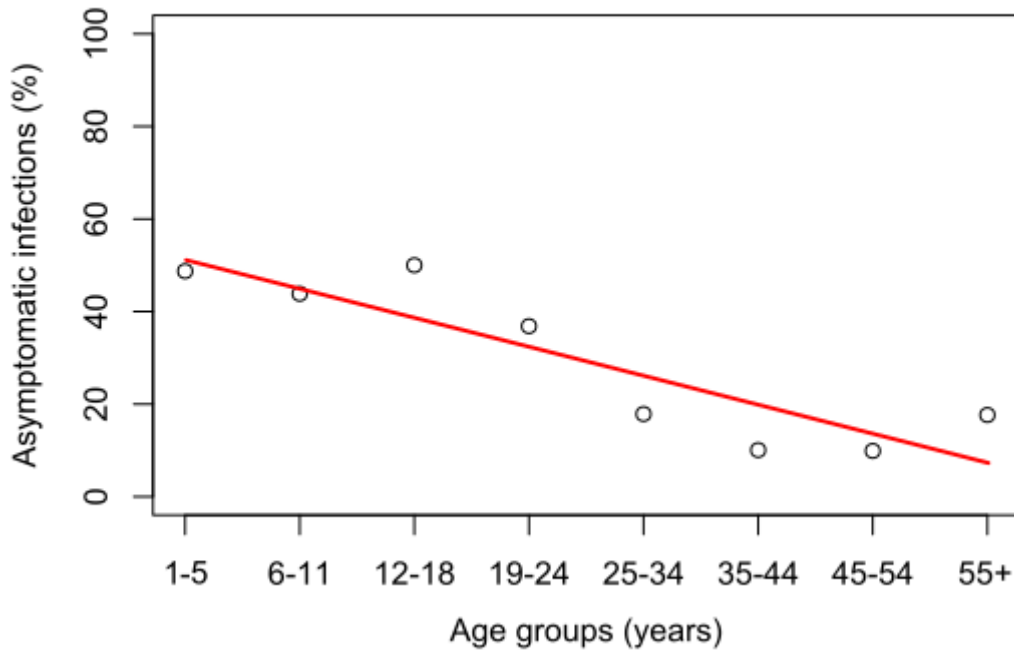
224



225

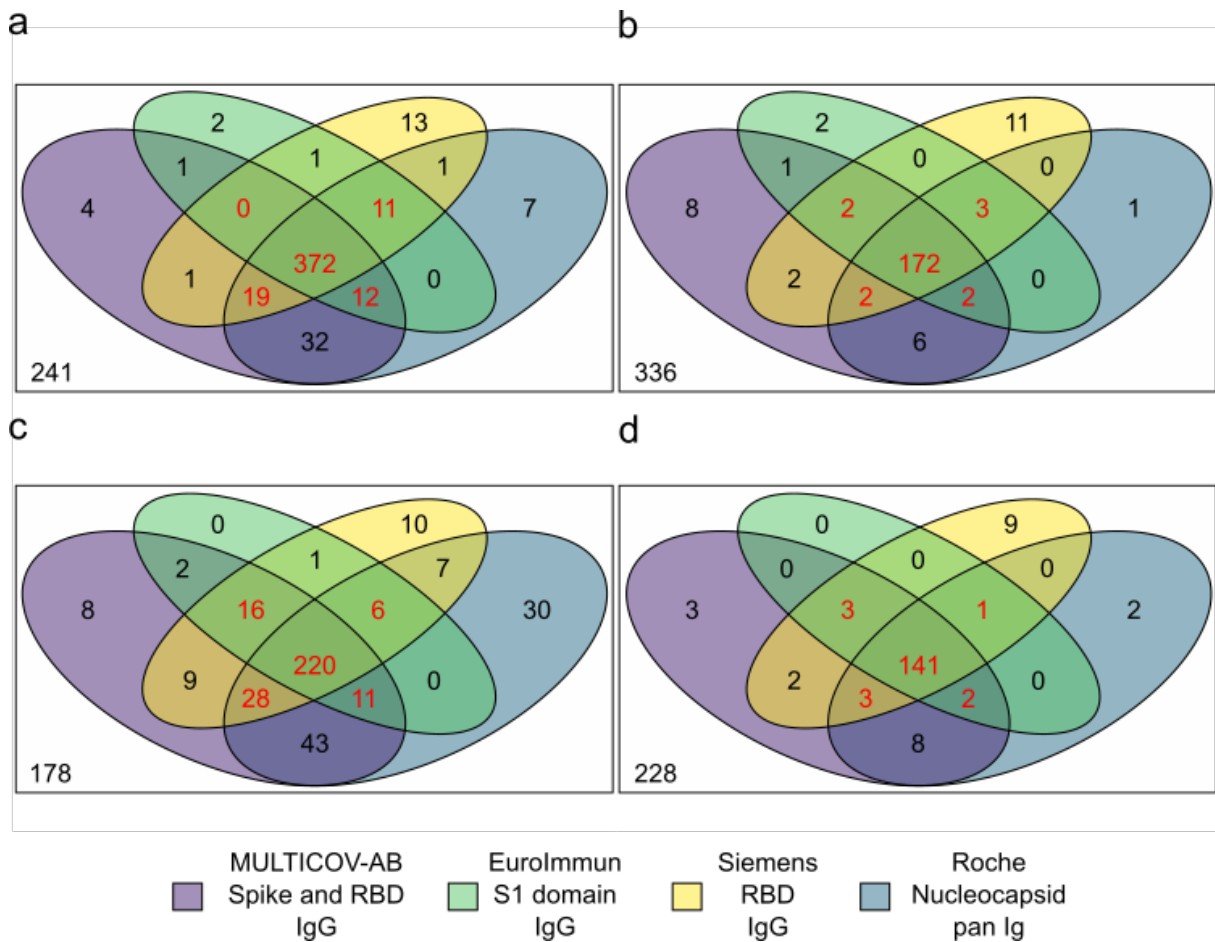
226 Figure S2 – **Study population age distribution.** Histogram showing age distribution within
227 the study population at T1 (n=1265).

228



230

231 Figure S3 – **Proportion of asymptomatic infections decreases with age.** Line graph
232 demonstrating the decrease in the proportion of asymptomatic infections with increasing age
233 across age-group. Red line indicates line of best fit. Only samples at T1 were included in this
234 analysis (n=1265).



235

236 **Figure S4 – Comparative performance of the different serology assays used in this**

237 **study.** 4-way Venn diagrams showing how each assay classified samples as being

238 seropositive for T1 (a and b) and T2 (c and d) for adults (a and c) and children (b and d).

239 Samples were classified as being positive if three or more assays classified them as being

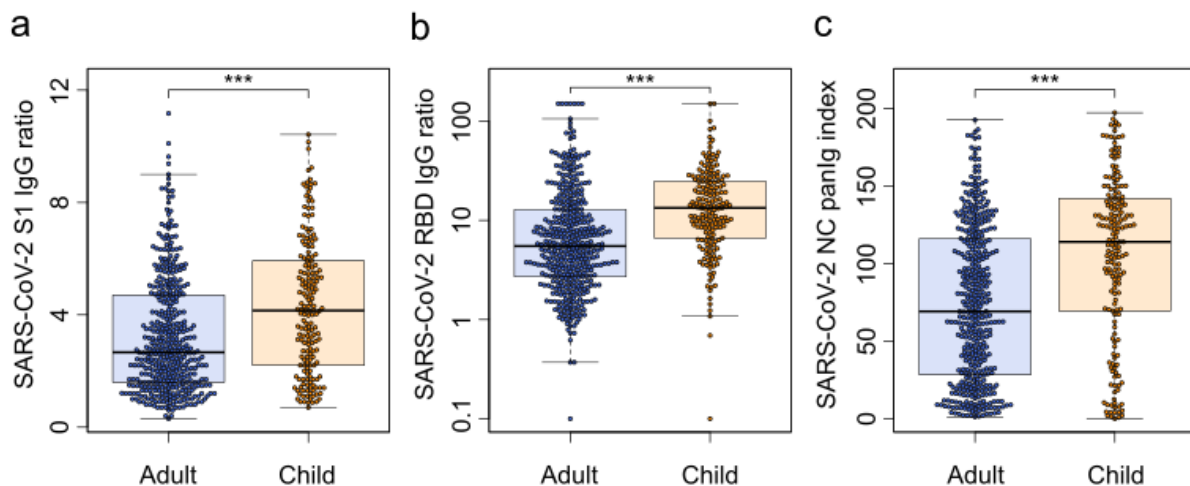
240 positive (shown in red). Assays are color-coded as defined by the key including the

241 manufacturer or name of the assay, which antigen it uses as a target and which Ig-isotype it

242 measures.

243

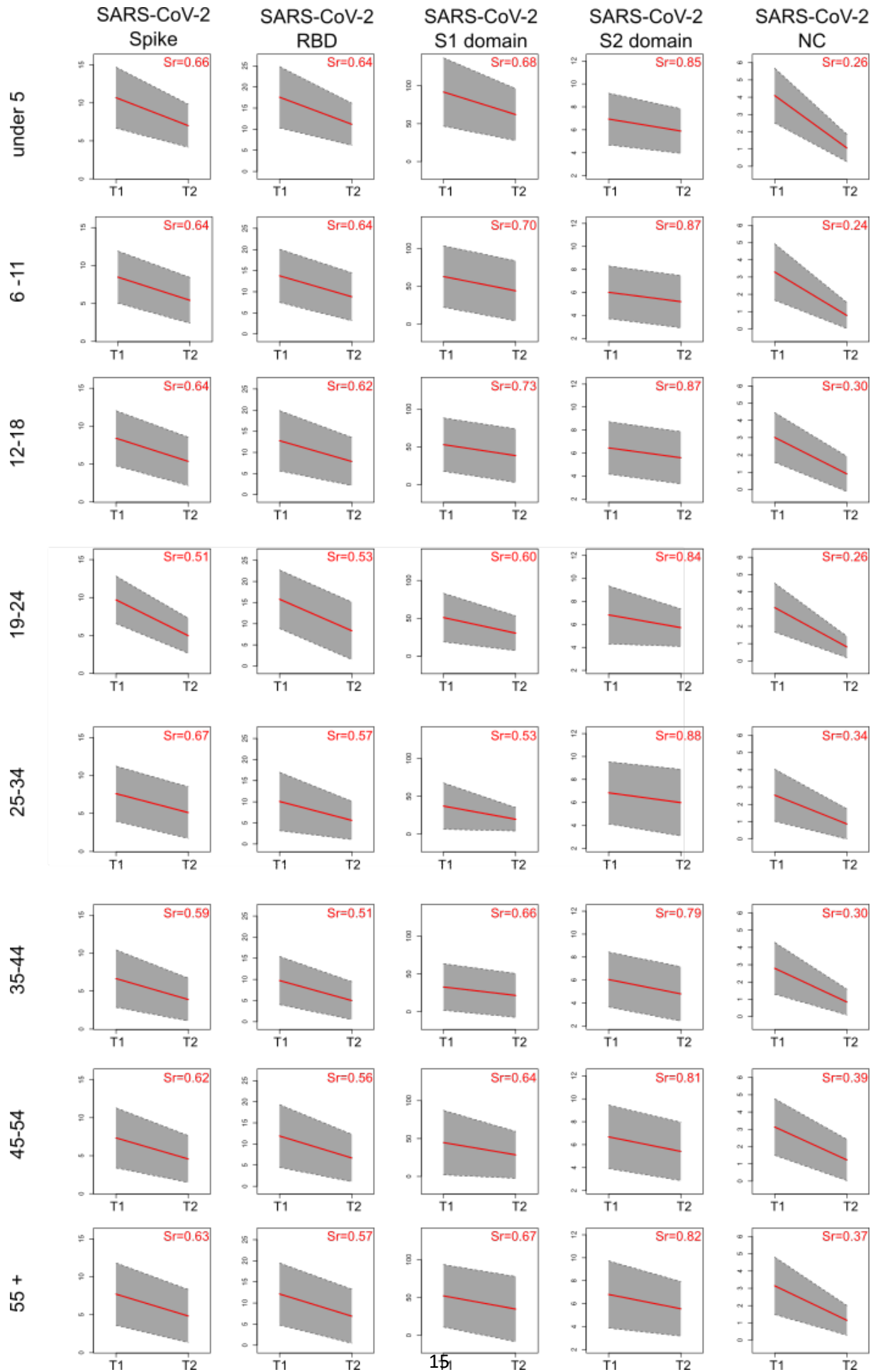
244



245

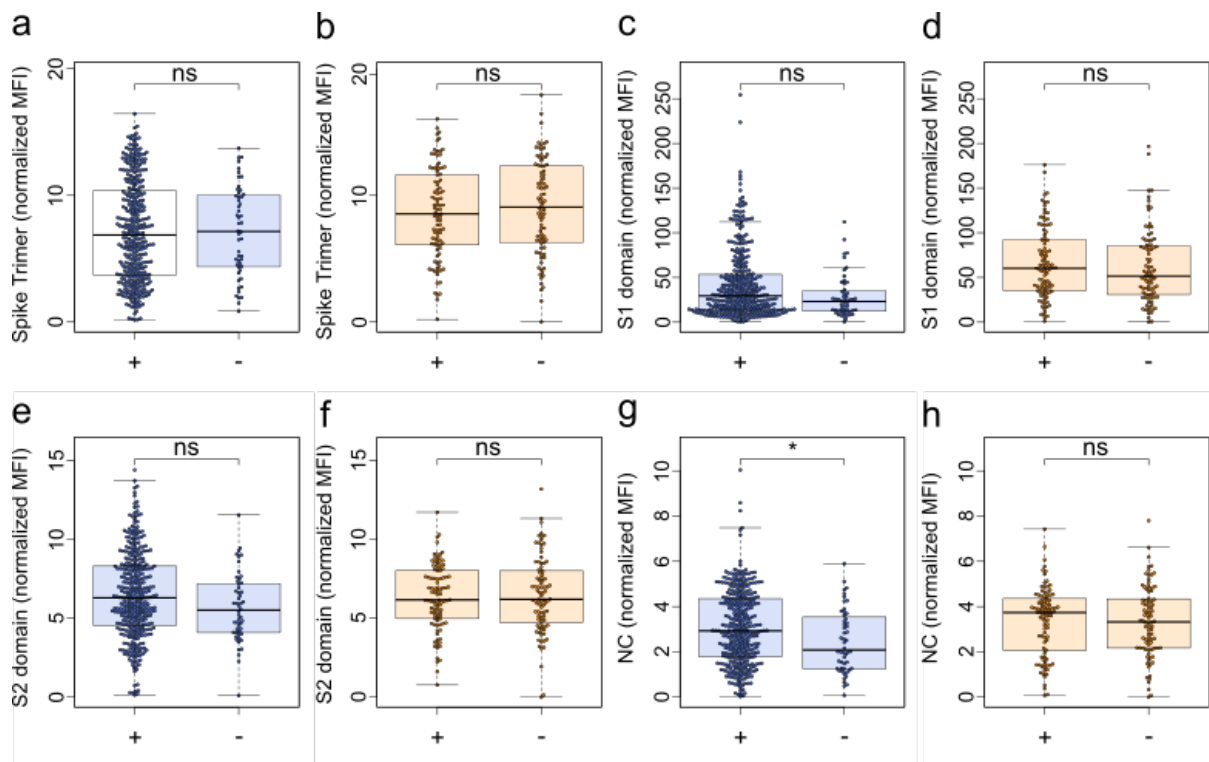
246 **Figure S5 – Children have higher antibody responses than adults.** Seropositive children
247 (orange, n=181) had significantly higher IgG antibody titres against S1 (a, $p < 0.001$), RBD (b,
248 $p < 0.001$) and nucleocapsid (NC) (c, $p < 0.001$) than seropositive adults (blue, n=414) as
249 determined using the commercial EuroImmun (a), Siemens (b) and Roche (c) assays at T1.
250 Seropositive adults and children were identified using the multi-assay definition of
251 seropositivity explained in the Method section. Box and whisker plots with the box
252 representing the median, 25th and 75th percentiles, while whiskers show the largest and
253 smallest non-outlier values. Outliers were identified using upper/lower quartile ± 1.5 times
254 IQR. Statistical significance was calculated by Mann-Whitney-U (two-sided) with ***
255 indicating a p-value < 0.001 .

256



258 Figure S6 – **Seroreversion occurs at the same rate in adults and children.** Longitudinal
259 comparison of T1 and T2 samples using MULTICOV-AB to determine the rate of
260 seroreversion. The IgG antibodies against spike trimer, RBD, S1 domain, S2 domain and
261 nucleocapsid (NC) of SARS-CoV-2 are shown. Samples are separated into distinct age
262 groups: under 5 years old (n=28), 6-11 (n=61), 12-18 (n=68), 19-24 (n=14), 25-34 (n=21), 35-
263 44 (n=117), 45-54 (n=148) and over 55 years old (n=31). All y-axis show the normalized MFI.
264 Red lines indicate mean rates of decrease; grey boxes indicate ± 1 standard deviation. Sr
265 indicates proportion of signal remaining, calculated as the ratio of the mean MFI at T2
266 compared to the mean MFI at T1.

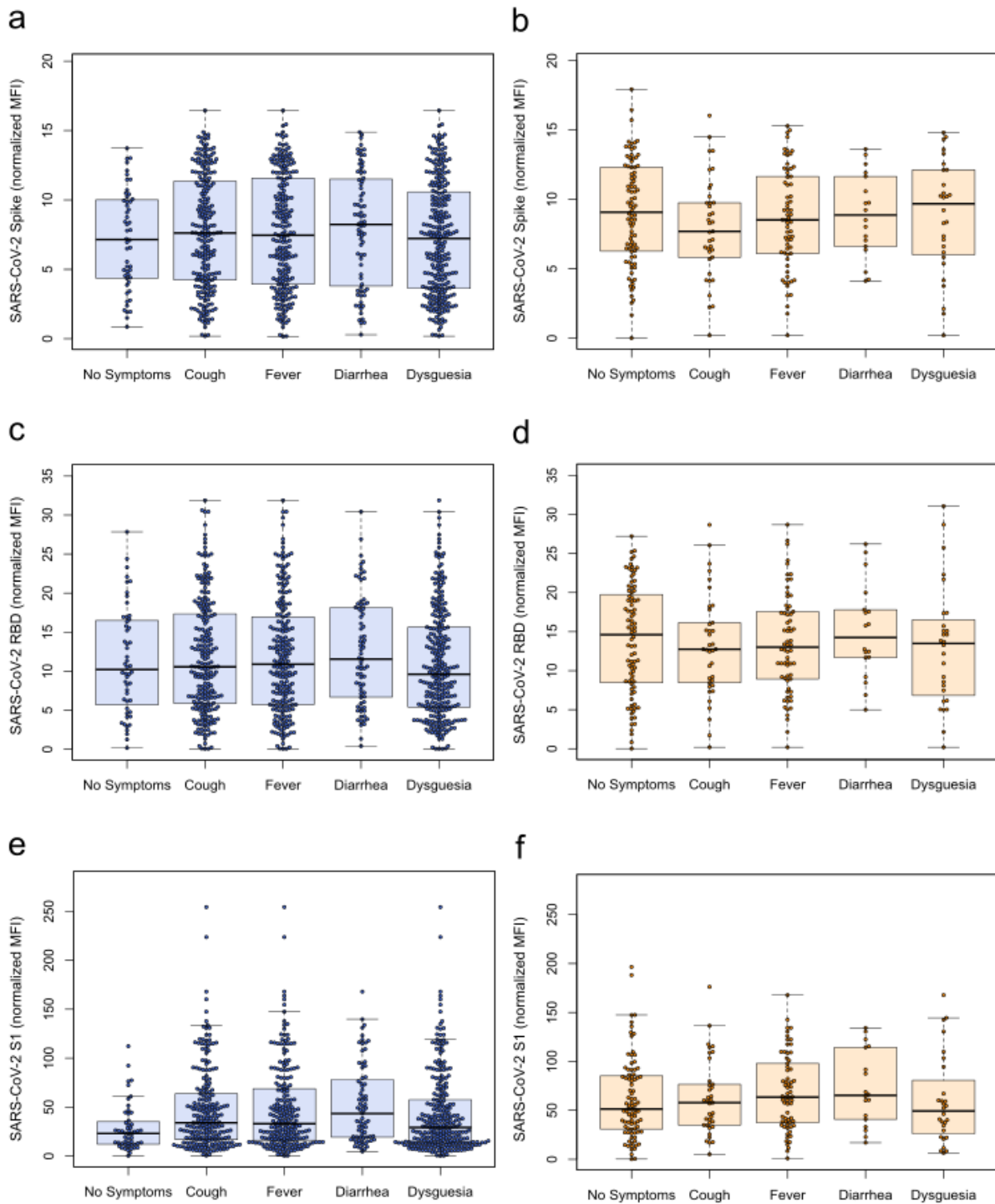
267



269

270 **Figure S7 – There is no difference in antibody response between asymptomatic and**
 271 **symptomatic infections in children.** Box and whisker plots with the box representing the
 272 median, 25th and 75th percentiles, while whiskers show the largest and smallest non-outlier
 273 values. Outliers were identified using upper/lower quartile ± 1.5 times IQR. Statistical
 274 significance was calculated by Mann-Whitney-U (two-sided) with * indicating a p-value < 0.01 .
 275 and ns indicating a non-significant p-value > 0.01 . “+” indicates a symptomatic infection while
 276 “-” indicates an asymptomatic infection. There were no significant differences between
 277 symptomatic and asymptomatic seropositive children (orange, n=185) in terms of antibody
 278 response for the spike trimer (b, p=0.43), S1 domain (d, p=0.34), S2 domain (f, p=0.87) or
 279 nucleocapsid (h, p=0.78). Symptomatic and asymptomatic seropositive adults (blue, n=415)
 280 showed no significant difference for the spike trimer (a, p=0.94), S1 domain (c, p=0.03) and
 281 S2 domain (e, p=0.05), though there was a small significant difference for the nucleocapsid
 282 (g, p=0.01).

283

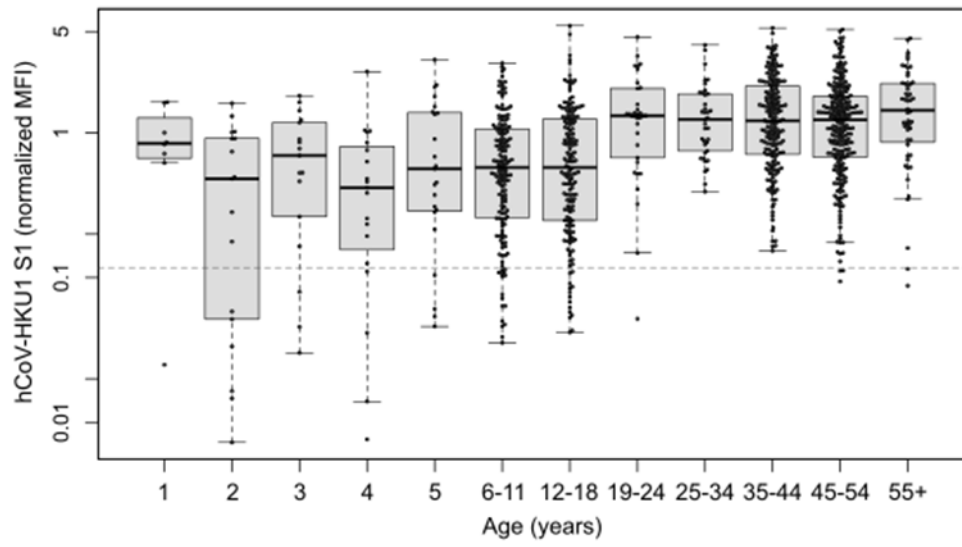
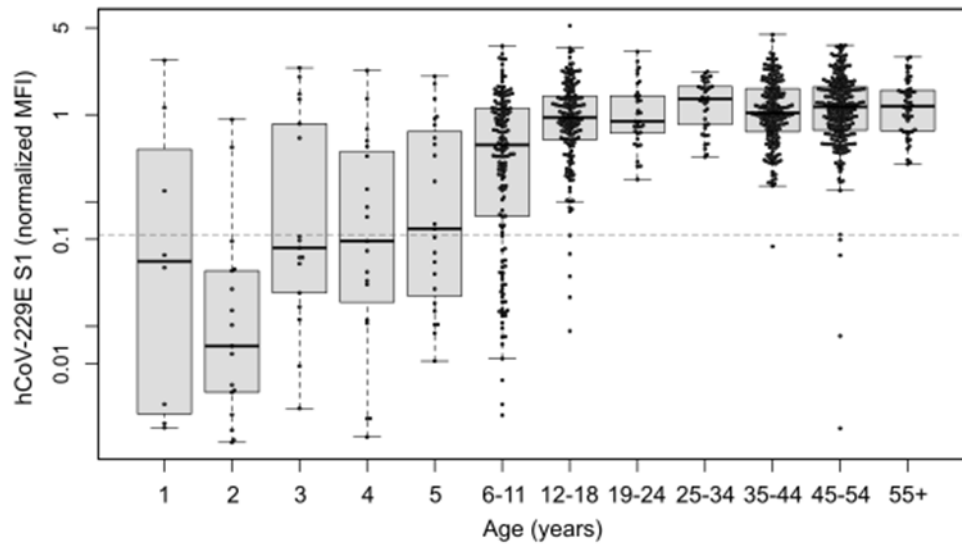
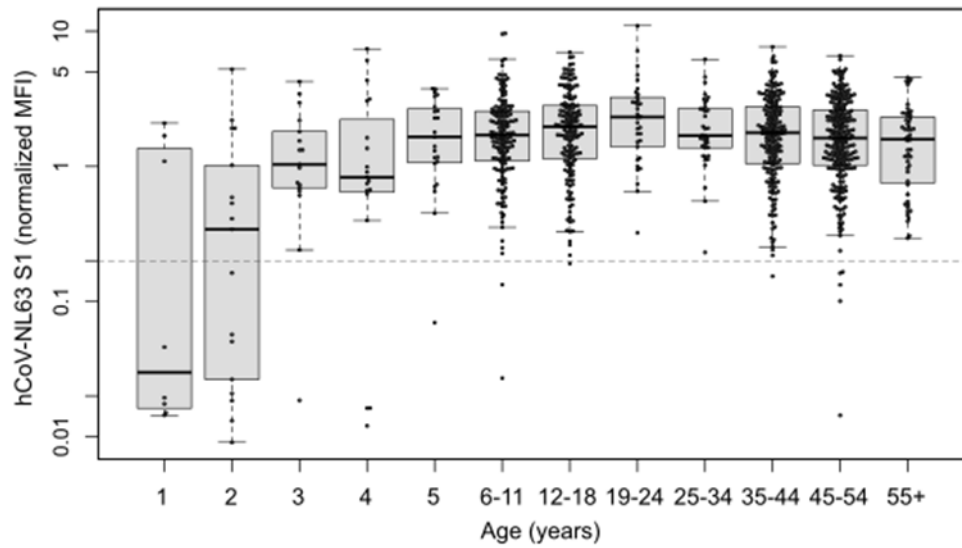


285

286 **Figure S8 – Symptoms do not moderate antibody response amongst seropositive**
 287 **individuals after mild COVID-19.** Box and whisker plots with the box representing the
 288 median, 25th and 75th percentiles, while whiskers show the largest and smallest non-outlier
 289 values. Outliers were identified using upper/lower quartile ± 1.5 times IQR. Within the
 290 seropositive subgroups, neither adults (a, c, e) nor children (b, d, f) showed any difference in

291 response based on presence of symptoms for either the spike trimer (a and b), RBD (c and
292 d) or S1 domain (e and f) of SARS-CoV-2. Symptom group sizes: no symptoms – adults
293 n=36, children n=83, cough – adults n=221, children n=37, fever – adults n=217, children
294 n=66, diarrhea – adults n=75, children n=18, dysgeusia – adults n=266, children n=28.

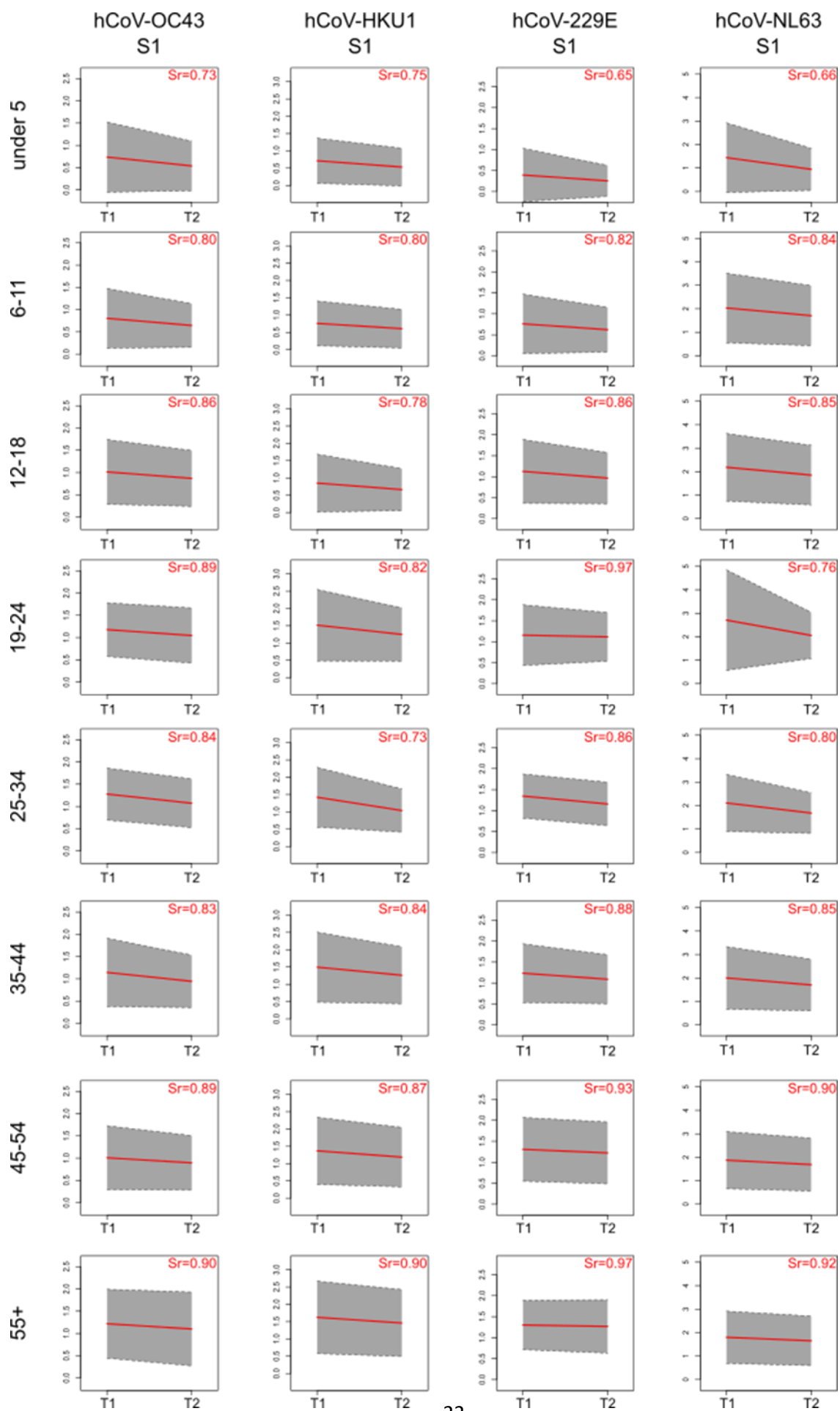
295

a**b****c**

297 **Figure S9 – Initial HCoV infection often occurs during the first five years of life.** Box and
298 whisker plots with the box representing the median, 25th and 75th percentiles, while
299 whiskers show the largest and smallest non-outlier values. Outliers were identified using
300 upper/lower quartile ± 1.5 times IQR. Single ages from 1 to 5 are shown (1 – n=8, 2 – n=17, 3
301 – n=17, 4 – n=19, 5 – n=23) with age then grouped into: 6-11 (n=160), 12-18 (n=163), 19-24
302 (n=34), 25-34 (n=37), 35-44 (n=195), 45-54 (n=346) and over 55 years olds (n=52). For all
303 HCoVs (a – HKU1, b – 229E, c – NL63), the majority of naïve samples are children. Dashed
304 line indicates one-tenth of the mean response of all samples. All samples below the dashed
305 line are considered to be naïve.

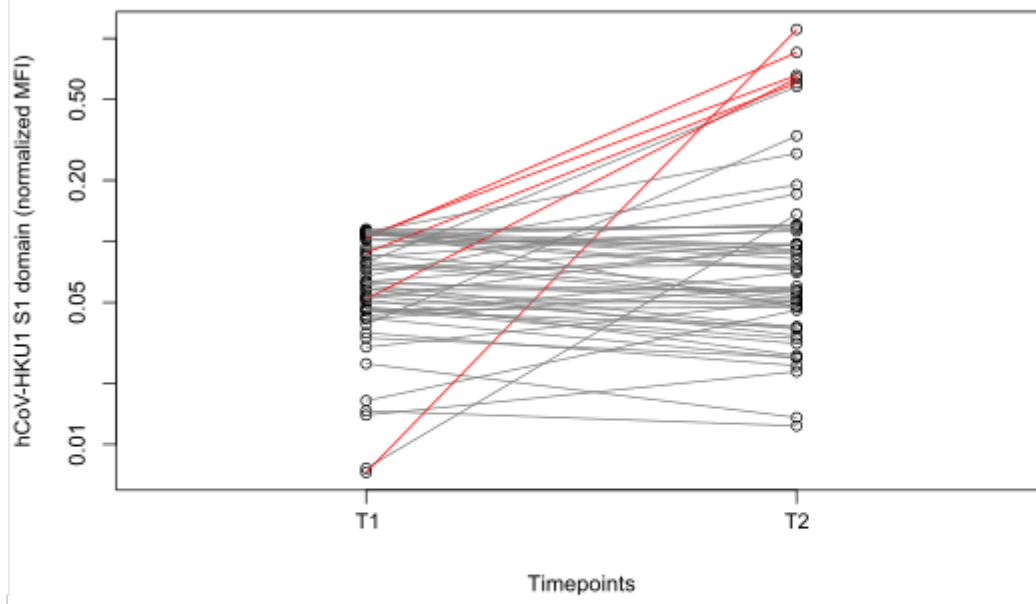
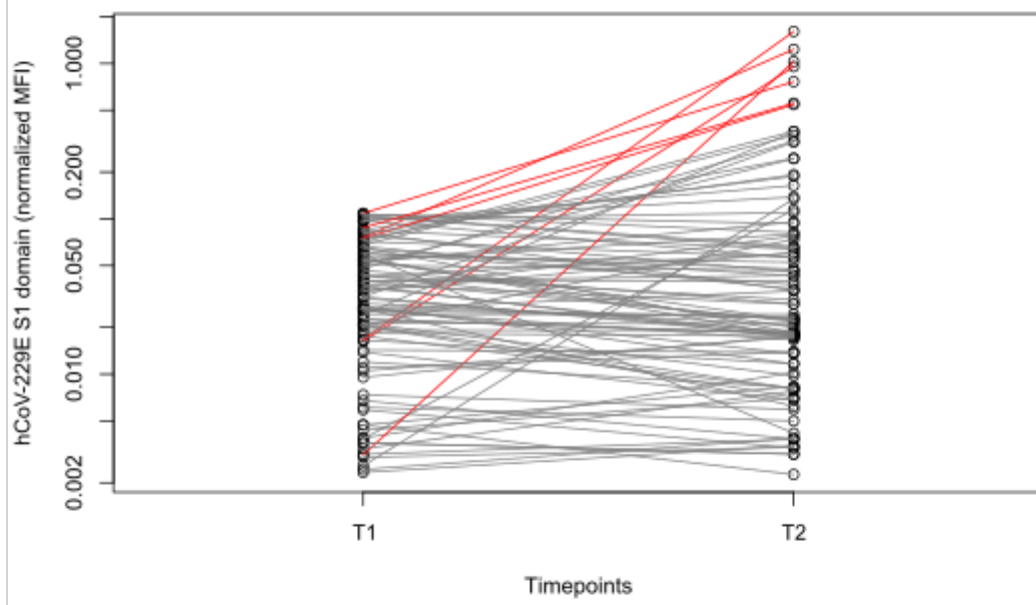
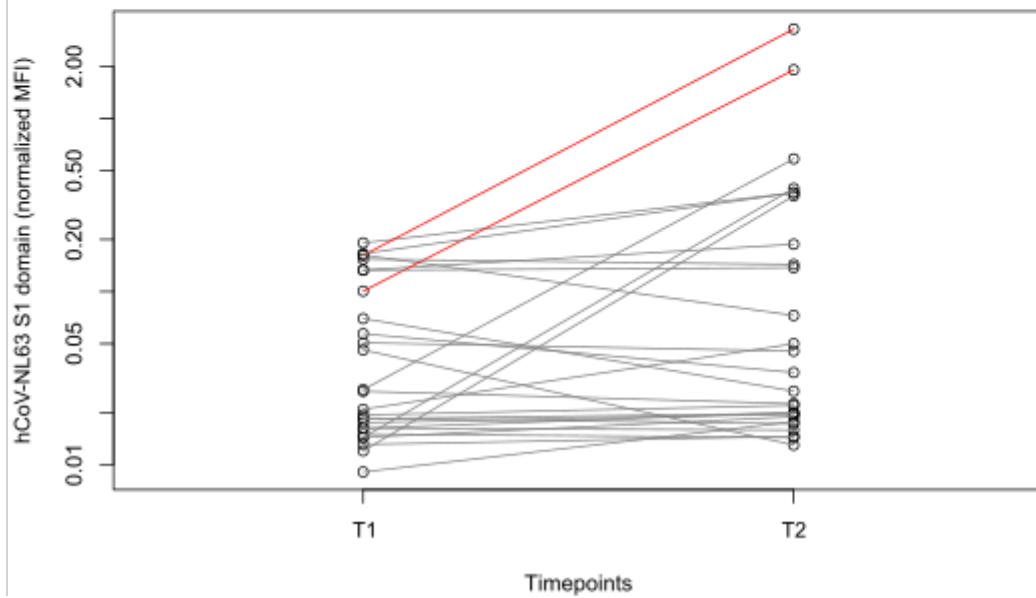
306

307



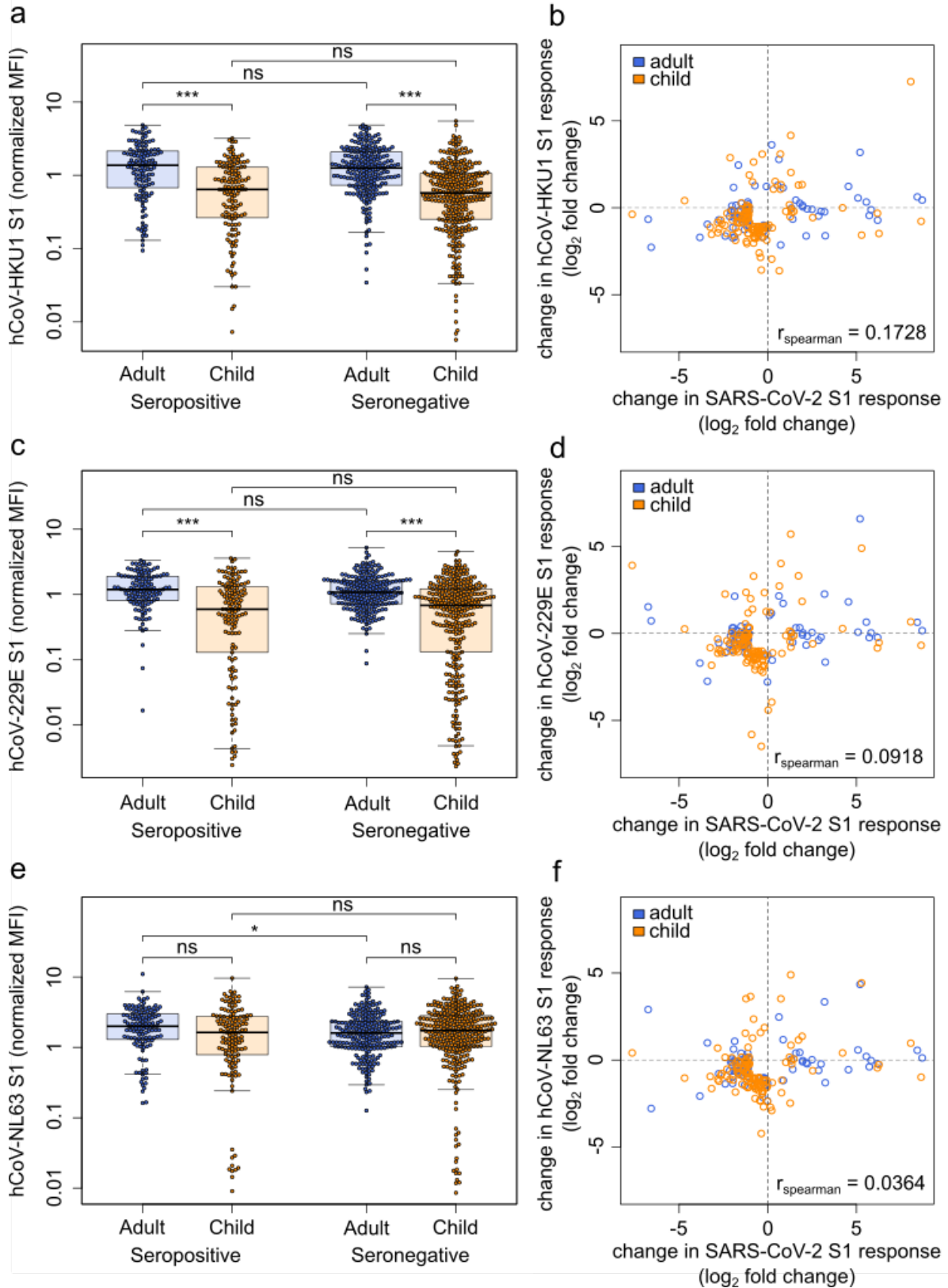
309 Figure S10 – **Children serorevert faster for HCoVs than adults.** Longitudinal comparison
310 of T1 and T2 samples using MULTICOV-AB to determine the rate of seroreversion. The S1
311 domain of HCoV-OC43, HCoV-HKU1, HCoV-229E and HCoV-NL63 are shown. Samples are
312 separated into distinct age groups: five years old and under (n=84), 6-11 (n=160), 12-18
313 (n=162), 19-24 (n=32), 25-34 (n=36), 35-44 (n=182), 45-54 (n=228) and over 55 years old
314 (n=48). Red lines indicate mean rate of decrease; grey boxes indicate ± 1 standard deviation.
315 Sr indicates the proportion of signal remaining, calculated as the ratio of the mean MFI at T2
316 compared to the mean MFI at T1.

317

a**b****c**

319 **Figure S11 – Naïve samples are present within the study, although endemic**
320 **coronavirus infections persisted during the SARS-CoV-2 pandemic.** Line graphs
321 showing longitudinal antibody response from T1 to T2 for samples defined as naïve at T1.
322 Individuals who remain naïve are shown in grey, individuals who seroconvert between T1
323 and by T2 are shown in red. Not all individuals who show increased HCoV antibody levels at
324 T2 compared to T1 are considered to have been infected, as some remain within the
325 negative range for the assay at T2. Normalized MFI is shown on a logscale for clarity.
326 Although there is variation in the number of naïve samples between the different HCoVs (a –
327 HKU1, b – 229E, c – NL63), new HCoV infections are seen across all HCoVs.

328



330

331 Figure S12 – HCoVs offer no cross protection towards SARS-CoV-2, nor do they show
 332 a boost-back antibody response following SARS-CoV-2 infection. Samples from
 333 households with a known index case were examined with MULTICOV-AB to determine

334 whether the antibody response to endemic coronaviruses (HCoV) provides any protection
335 against SARS-CoV-2. (a, c and e) Box and whisker plots demonstrating no significant
336 difference between SARS-CoV-2 seropositive and seronegative adults (n=440) or children
337 (n=436) in terms of HCoV-HKU1 (a, adult p=0.67, child p=0.47) or HCoV-229E (c, adult
338 p=0.14, child p=0.99). For HCoV-NL63, there was a small significant difference for adults
339 only (e, adults p=0.009, children p=0.35). Boxes represent the median, 25th and 75th
340 percentiles, and whiskers show the largest and smallest non-outlier values. Outliers were
341 identified using upper/lower quartile \pm 1.5 times IQR. Statistical significance was calculated
342 by Mann-Whitney-U (two-sided) with *** indicating a p-value <0.001, * indicating a p-value
343 <0.01 and ns indicating a p-value >0.01 (b, d and f). When comparing paired samples
344 longitudinally within the SARS-CoV-2 seropositive subgroup, there was no association
345 between change in SARS-CoV-2 antibody level and change in HCoV antibody level for
346 HCoV-HKU1 (b), HCoV-229E (d) or HCoV-NL63 (f) and in either adults (b - n=79, d - n=74,
347 f - n=80) or children (b -n=117, d - n=114, f - n=118). Change in response is presented as
348 log₂-fold change from T1 to T2 and only samples with a log₂-fold change > 1 or < -1 are
349 shown. Spearman's rank was used to calculate correlations between the changes in HCoV
350 antibody level and change in SARS-CoV-2 antibody level.

351 **Supplementary Tables**

352 **Table S1 – Comparative seroprevalence between different assays used in the study**

Assay	Seropositive	Seronegative	Total	% of Seropositive
Eurolmmun S1 IgG	991	1245	2236	44.32
Roche Elecsys N pan Ig	1149	1087	2236	51.39
Siemens RBD IgG	1067	1169	2236	47.72
MULTICOV S and RBD IgG	1142	1094	2236	51.07

353

354 Only samples that were measured with all four assays are considered. For each assay, the

355 manufacturer or name of the assay is stated, as well as the target antigen and Ig-isotype

356 detected.

357

Table S2 – Symptom frequency and diagnostic performance in children under 18

		Age group						All children	
		Under 5		6 to 11		12 to 18			
<i>Symptom</i>	Present or Absent	n (%)	Seropositive (PPV, 95% CI)	n (%)	Seropositive (PPV, 95% CI)	n (%)	Seropositive (PPV, 95% CI)	n (%)	Seropositive (PPV, 95% CI)
Fever	Present	37 (28.03)	17 (0.46, 0.33-0.59)	46 (21.70)	28 (0.61, 0.48-0.72)	28 (13.40)	21 (0.75, 0.57-0.87)	111 (20.07)	66 (0.59, 0.51-0.67)
	Absent	95 (71.97)	23 (0.24, 0.19-0.30)	166 (78.30)	45 (0.27, 0.24-0.31)	181 (86.60)	53 (0.29, 0.27-0.32)	442 (79.93)	121 (0.27, 0.25-0.29)
Cough	Present	28 (21.21)	9 (0.32, 0.19-0.48)	43 (20.28)	14 (0.33, 0.21-0.46)	28 (13.40)	14 (0.50, 0.34-0.66)	99 (17.90)	37 (0.37, 0.29-0.46)
	Absent	104 (78.79)	31 (0.30, 0.25-0.35)	169 (79.72)	59 (0.35, 0.31-0.38)	181 (86.60)	60 (0.33, 0.30-0.36)	454 (82.10)	150 (0.33, 0.31-0.35)
Diarrhea	Present	8 (6.06)	3 (0.38, 0.13-0.71)	17 (8.02)	11 (0.65, 0.41-0.83)	8 (3.83)	4 (0.50, 0.20-0.80)	33 (5.97)	18 (0.55, 0.38-0.70)
	Absent	124 (93.94)	37 (0.30, 0.27-0.32)	195 (91.98)	62 (0.32, 0.30-0.34)	201 (96.17)	70 (0.35, 0.33-0.36)	520 (94.03)	169 (0.33, 0.31-0.34)
Dysguesia	Present	1 (0.76)	1 (1.00, n/a)	7 (3.30)	6 (0.86, 0.42-0.98)	24 (11.48)	21 (0.88, 0.68-0.96)	32 (5.79)	28 (0.88, 0.71-0.95)
	Absent	131 (99.24)	39 (0.30, 0.29-0.30)	205 (69.70)	67 (0.33, 0.32-0.34)	185 (88.52)	53 (0.29, 0.27-0.31)	521 (94.21)	159 (0.31, 0.30-0.31)

The frequency of each symptom within the study population, shown number of individuals (n, also as %) either with (present) or without (absent) this symptom, and the number of individuals (n, also as %) within these groups who were seropositive for SARS-CoV-2. Children are split into three groups: under 5-year olds (n=132), 6- to 11-year olds (n=212) and 12- to 18-year olds (n=209). Positive Predictive Value (PPV) for seropositivity in the presence or absence of each symptom, 95% Confidence Intervals (CI) are the standard logit confidence intervals calculated as given by Mercaldo et al. 2007⁵.

Table S3 – List of antigens used in MULTICOV-AB

Disease	Antigen	Manufacturer	Cat. No.
SARS-CoV-2	Spike Trimer	NMI	-
SARS-CoV-2	RBD	NMI	-
SARS-CoV-2	S1 domain	NMI	-
SARS-CoV-2	S2 domain	Sino	40590
SARS-CoV-2	Nucleocapsid	Aalto	6404-b
SARS-CoV-2	Nucleocapsid N-terminal domain	NMI	-
SARS-CoV-2	RBD alpha variant	NMI	-
SARS-CoV-2	RBD beta variant	NMI	-
hCoV-OC43	S1 domain	NMI	-
hCoV-OC43	Nucleocapsid	NMI	-
hCoV-OC43	Nucleocapsid N-terminal domain	NMI	-
hCoV-HKU1	S1 domain	NMI	-
hCoV-HKU1	Nucleocapsid	NMI	-
hCoV-HKU1	Nucleocapsid N-terminal domain	NMI	-
hCoV-NL63	S1 domain	NMI	-
hCoV-NL63	Nucleocapsid	NMI	-
hCoV-NL63	Nucleocapsid N-terminal domain	NMI	-
hCoV-229E	S1 domain	NMI	-
hCoV-229E	Nucleocapsid	NMI	-
hCoV-229E	Nucleocapsid N-terminal domain	NMI	-
CONTROL	Human IgG	NMI	-
CONTROL	Goat-anti-human IgG	NMI	-
CONTROL	Human IgA	NMI	-
CONTROL	Goat-anti-human IgA	NMI	-

List of antigens included in MULTICOV-AB in this study, including information about their manufacturer, and if available, their category number. Full information on the NMI produced antigens were used as previously published^{1,2}.

Supplementary References

1. Becker M, Dulovic A, Junker D, et al. Immune response to SARS-CoV-2 variants of concern in vaccinated individuals. *Nat Commun* 2021;12(1):3109.
2. Becker M, Strengert M, Junker D, et al. Exploring beyond clinical routine SARS-CoV-2 serology using MultiCoV-Ab to evaluate endemic coronavirus cross-reactivity. *Nat Commun* 2021;12(1):1152.
3. Planatscher H, Rimmele S, Michel G, Pötz O, Joos T, Schneiderhan-Marra N. Systematic reference sample generation for multiplexed serological assays. *Sci Rep* 2013;3:3259.
4. Jahrsdörfer B, Groß R, Seidel A, et al. Characterization of the SARS-CoV-2 Neutralization Potential of COVID-19–Convalescent Donors. *J Immunol* 2021;206(11):2614–22.
5. Mercaldo ND, Lau KF, Zhou XH. Confidence intervals for predictive values with an emphasis to case-control studies. *Stat Med* 2007;26(10):2170–83.