

1 Supplementary Materials and Methods

2 Transmission dynamic models

3 Mathematical models were used to reproduce the annual RSV epidemics before the COVID-19 pandemic based on the inpatient data of
4 New York (2005-2014) and California (2003-2011). Parameters to produce biennial RSV epidemics were taken from models fit to similar datasets
5 from Colorado (1989–2009). This model assumes infants are born with transplacentally-acquired antibodies against RSV infections from their
6 mothers (M). As transplacentally-acquired protective antibodies wanes, infants become susceptible to infection (S_0). Following each infection (I_i),
7 individuals gain partial immunity that lowers both their susceptibility to subsequent infections and the duration and infectiousness of subsequent
8 infections (see Figure S1). The force of infection for a specific age group a , $\lambda_a(t)$, for time t is defined as:

$$\lambda_a(t) = \left(1 + b_1 \cos\left(\frac{2\pi t - \phi}{12}\right)\right) \sum_k \beta_{a,k} (I_{1,k}(t) + \rho_1 I_{2,k}(t) + \rho_2 I_{3,k}(t) + \rho_2 I_{4,k}(t)) / N_k(t)$$

9

10 Seasonality in the force of infection is represented by $(1 + b_1 \cos(\frac{2\pi t - \phi}{12}))$, where b_1 is the amplitude of seasonality and ϕ is the seasonal offset.
11 The chance of susceptible individuals in age group a being infected is influenced by their contacts with infectious individuals in the entire
12 population. $\beta_{a,k}$ is the transmission rate from age group k to age group a . The proportion of infected individuals and their relative infectiousness at
13 time t is denoted by $(I_{1,k}(t) + \rho_1 I_{2,k}(t) + \rho_2 I_{3,k}(t) + \rho_2 I_{4,k}(t)) / N_k(t)$, where $I_{1,k}$ is the number of infectious individuals of age k during their
14 first infection; $I_{2,k}$, $I_{3,k}$ and $I_{4,k}$ are the number of infectious individuals who have been infected two, three and four or more times, respectively; ρ_1
15 and ρ_2 denote the relative infectiousness of the second and subsequent infections; and N_k is the total population of age k .

16 The transmission parameter $\beta_{a,k}$ can be further decomposed into the age-specific contact probability between age group a and k per unit
17 time ($C_{a,k}$) and the probability of transmission given contact between an infectious and a susceptible individual (q). Age-specific mixing patterns
18 were obtained from several previous studies, including detailed contact patterns for infants under 1 year of age and location-specific contact
19 patterns.¹⁻³ Age was stratified into thirteen groups: infants younger than 3 months, 3-5 months, 6-8 months, 9-11 months, 1 year, 2 years, 3 years, 4
20 years, 5-9 years, 10-19 years, 20-39 years, 40-59 years, and ≥ 60 years.

21 The disease transmission process is linked to observation-level information. The probabilities of developing lower respiratory tract disease
22 and being hospitalized upon RSV infection are informed by cohort studies conducted in the US and Kenya.^{1,4-14} The number of lower respiratory
23 tract infections (LRI) due to RSV is given by:

$$D_a(t) = \lambda_a(t) (S_{0,a}(t) d_{1,a} + \sigma_1 S_{1,a}(t) d_{2,a} + \sigma_2 S_{2,a}(t) d_{3,a} + \sigma_3 S_{3,a}(t) d_{3,a})$$

24 while the number of hospitalizations is given by:

$$H_a(t) = \lambda_a(t)(S_{0,a}(t)h_{1,a} + \sigma_1 S_{1,a}(t)h_{2,a} + \sigma_2 S_{2,a}(t)h_{3,a} + \sigma_3 S_{3,a}(t)h_{3,a})$$

25 where $\lambda_a(t)$ is the force of infection for a specific age group a at time t (as defined above). $S_{0,a}$ is the number of fully susceptible individuals of
 26 age a ; $S_{1,a}$, $S_{2,a}$ and $S_{3,a}$ are the number of susceptible individuals who have been infected once, twice and more times, respectively. σ_1 , σ_2 and σ_3
 27 denote the relative risk of infection following the first, second, and more infections. $h_{1,a}$, $h_{2,a}$ and $h_{3,a}$ are the proportion of the first, second, and
 28 more infections that are hospitalized.

29 The average age of hospitalization among children under 5 in month t is given by:¹⁵

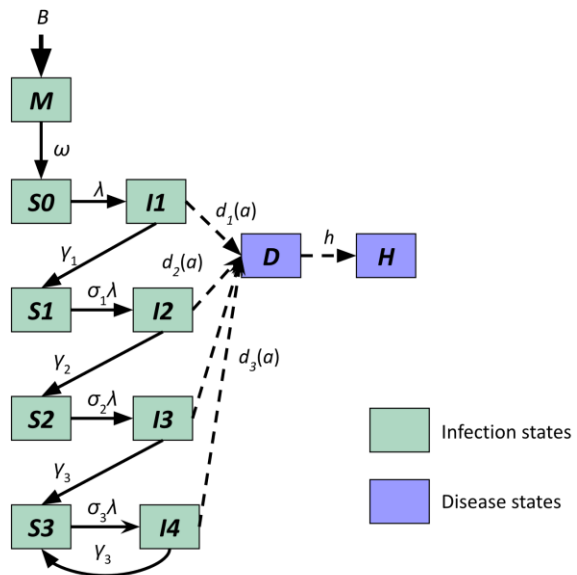
$$A(t) = \frac{\sum P_a \lambda_a(t)(S_{0,a}(t)h_{1,a} + \sigma_1 S_{1,a}(t)h_{2,a} + \sigma_2 S_{2,a}(t)h_{3,a} + \sigma_3 S_{3,a}(t)h_{3,a})}{\sum \lambda_a(t)(S_{0,a}(t)h_{1,a} + \sigma_1 S_{1,a}(t)h_{2,a} + \sigma_2 S_{2,a}(t)h_{3,a} + \sigma_3 S_{3,a}(t)h_{3,a})}$$

30 where the weight P_a is the midpoint of age group a .

31 Several model parameters were fixed based on data from previous cohort and modeling studies.^{1,4-14} We used Bayesian inference to
 32 estimate the average duration of transplacentally-acquired immunity, age-specific probability of hospitalization in the 40-59 year and >60 year age
 33 groups, the transmissibility coefficient, and seasonal parameters by fitting the model to the hospitalization data from New York and California.^{16,17}
 34 We identified the best-fit parameter sets by maximum a posteriori estimation.¹⁸ The likelihood was calculated by assuming the observed number
 35 of hospitalizations in the entire population was Poisson-distributed with a mean equal to the model-predicted number of hospitalization, and that
 36 the observed age distribution was multinomial-distributed with probabilities equal to the model-predicted distribution of RSV hospitalizations in
 37 each age group.

38 To validate our model predictions, we fitted the transmission model to the inpatient data for California from 2003 to 2011; we then
 39 compared the model predictions with data on the percent of clinical specimens positive for RSV from a separate sentinel surveillance database
 40 from 2012 to 2018. We rescaled the percent positive data by calculating a scaling factor based on overlaying the surveillance data and inpatient
 41 data from 2009 to 2011 (see Figure S3).

42 We initialized the transmission models with 1 infectious individual in each age group (except for infants under 6 months) in July 1981 and
 43 used a burn-in period of 24 years and 22 years in New York and California, respectively. We also performed a sensitivity analysis around what re-
 44 emergence might look like in a state with a biennial pattern of epidemics, using parameters fitted to earlier data from Colorado as an example and
 45 assuming a linearly declining birth rate (from 17 to 10 births per 1,000 people per year). We used the same number of infectious individuals to
 46 initialize transmission model, and a burn-in period of 40 or 41 years starting from 1971 or 1970 to allow for greater incidence in even or odd years.



47

48 **Figure S1. Transmission dynamic model for RSV.** The green boxes represent infection states in the model, while purple boxes represent diseased states
 49 (RSV lower respiratory illness, D, and RSV hospitalizations, H).

50

51 **Table S1 Shared transmission dynamic model parameters.**

Parameter description	Symbol	Parameter value	Reference for fixed or prior value	Note
Duration of transplacentally-acquired antibodies against RSV infections in infants from their mothers	$1/\Omega$	112 days	[19]	Fitted for NY and CA using maximum a posteriori estimation, assuming a Gamma(10,11) prior distribution
Duration of infectiousness			[20]	
First infection	$1/\gamma_1$	10 days		
Second infection	$1/\gamma_2$	7 days		
Subsequent infection	$1/\gamma_3$	5 days		
Relative risk of infection following			[4,8,9,21]	
First infection	σ_1	0.76		
Second infection	σ_2	0.6		
Subsequent infection	σ_3	0.4		
Relative infectiousness				
Second infections	ρ_1	0.75	[4,8,10]	
Subsequent infections	ρ_2	0.51	[22]	
Proportion of RSV infections leading to lower respiratory tract infection			[5] $\Pr(LRI I_s)$ [23] $\Pr(I_s I)$	The probability of lower respiratory infection (LRI) given infection was estimated as the product of LRI given symptomatic infection (I_s) times the probability of symptoms given infection: $\Pr(LRI I) = \Pr(LRI I_s) * \Pr(I_s I)$
First infection,				
0-2 months old	$d_{p,0-2}$	0.44*0.9		
3-5 months old	$d_{p,3-5}$	0.43*0.9		
6-8 months old	$d_{p,6-8}$	0.23*0.9		
9-11 months old	$d_{p,9-11}$	0.22*0.9		
1-2 years old	$d_{p,1}$	0.21*0.8		
2-4 years old	$d_{p,2}$	0.2*0.8		
≥ 5 years old	$d_{p,adults}$	0.05	[24]	
Second infection	$d_{s,a}$	$0.5*d_{p,a}$	[8]	
Third+ infection	$d_{t,a}$	$0.7*d_{s,a}$	[8]	
Proportion of RSV infections leading to hospitalization			[10,25,26]	
First infection,	$h_{p,0-2}$	$0.20*d_{p,0-2}$	[27,28]	

<3 months old				
3-5 months old	$h_{p,3-5}$	$0.08*d_{p,3-5}$		
6-8 months old	$h_{p,6-8}$	$0.07*d_{p,6-8}$		
9-11 months old	$h_{p,9-11}$	$0.06*d_{p,9-11}$		
1-2 years old	$h_{p,1}$	$0.06*d_{p,1}$		
2-4 years old	$h_{p,2}$	$0.05*d_{p,2-4}$		
≥ 5 years old	$h_{p,adults}$	$0.02*d_{p,adults}$		
Second infection	$h_{s,a}$	$0.4*H_{p,a}$	[8]	
Third infection	$h_{t,a}$	0 except for the elderly		Fitted for the elderly using maximum a posteriori estimation, assuming priors follow a uniform distribution U(0,1)
Scenarios for the impact of mitigation measures				
Reduction in RSV transmission		10%-25%	[29]	
Decrease in non-household contacts		82%	[30]	
Increase in household contacts		10%	[31]	
External seeding during control period		100%-40%	[32]	

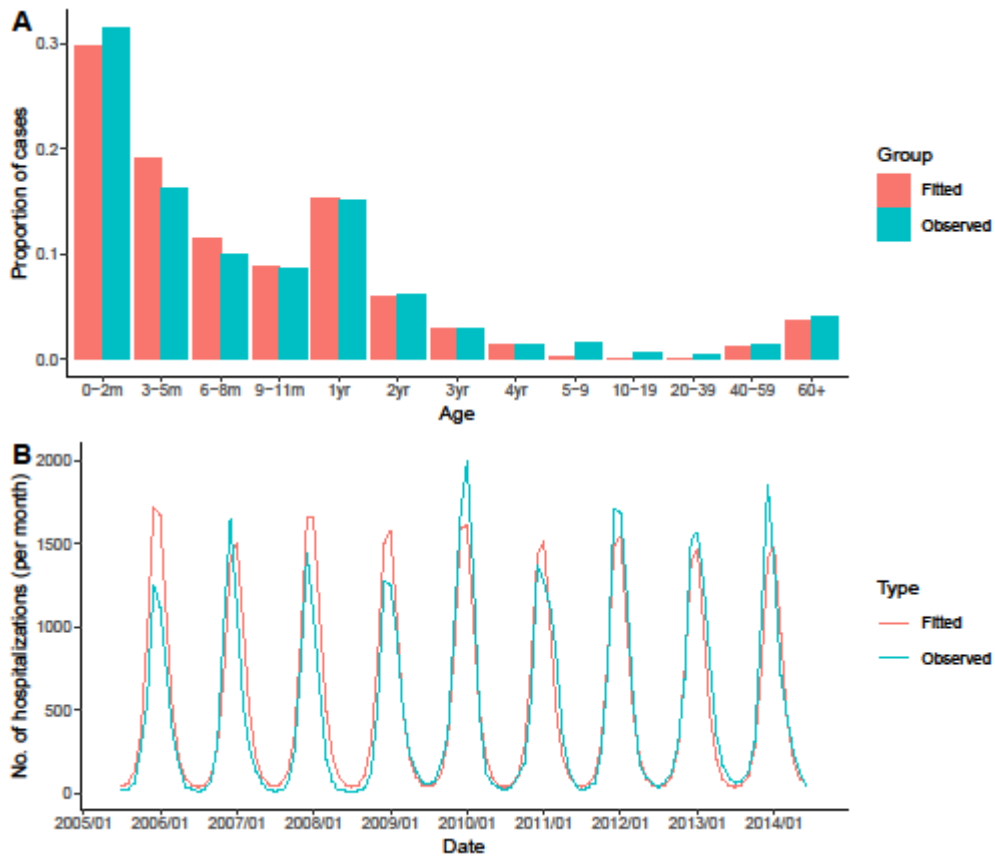
52

53

54 **Table S2 State-specific estimated transmission dynamic model parameters.**

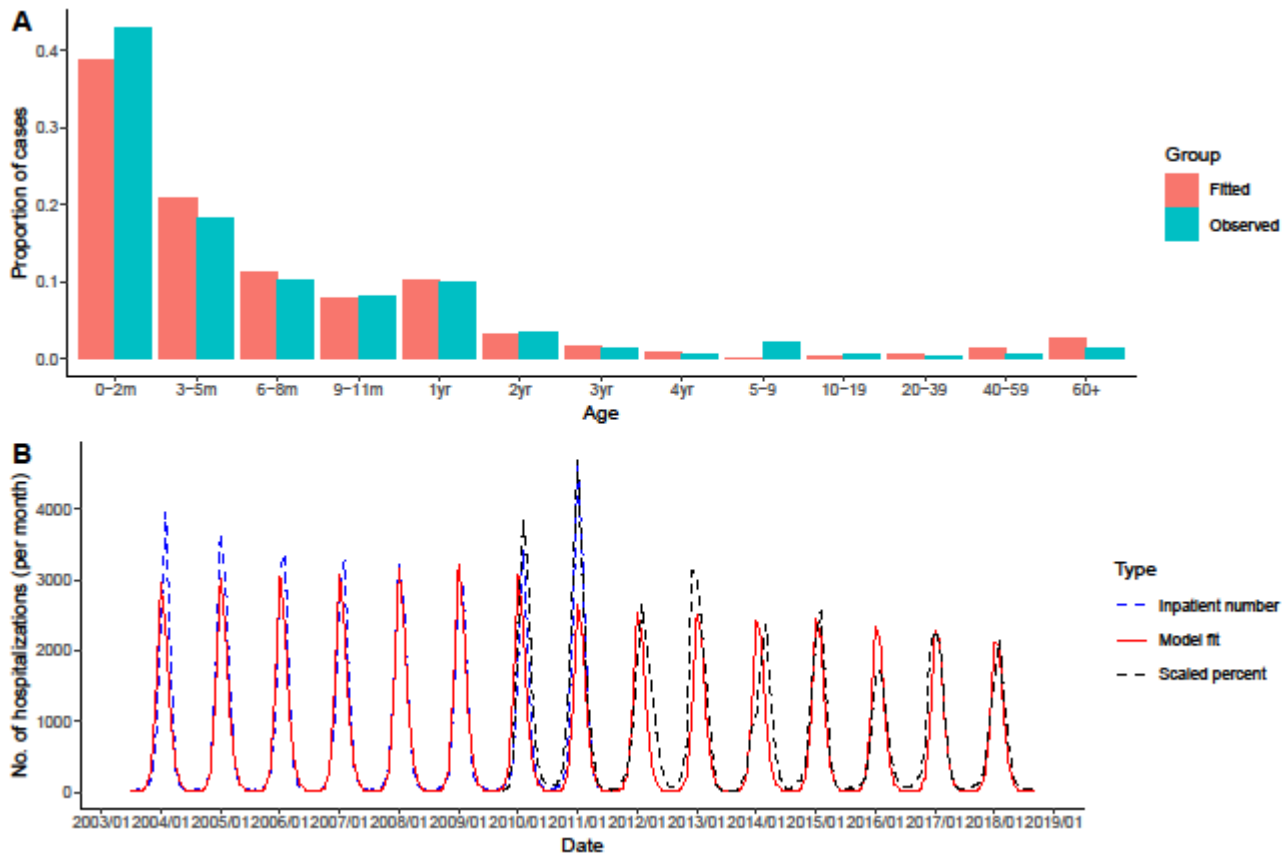
	New York	California	Colorado
Duration of maternal immunity	116.05	76	112
Basic reproductive number*	9.00	8.88	8.91
Amplitude of seasonality	0.16	0.25	0.24
Timing of seasonality	0.54	0.44	0.49
Reporting fraction	1	0.60	1

55 *The basic reproductive number (R_0) was estimated from $R_0 = \frac{\det(\beta_{a,k})}{\gamma_1} = \frac{\det(qC_{a,k})}{\gamma_1}$, using the next-generation matrix method; the parameter q was fitted to the data.



56

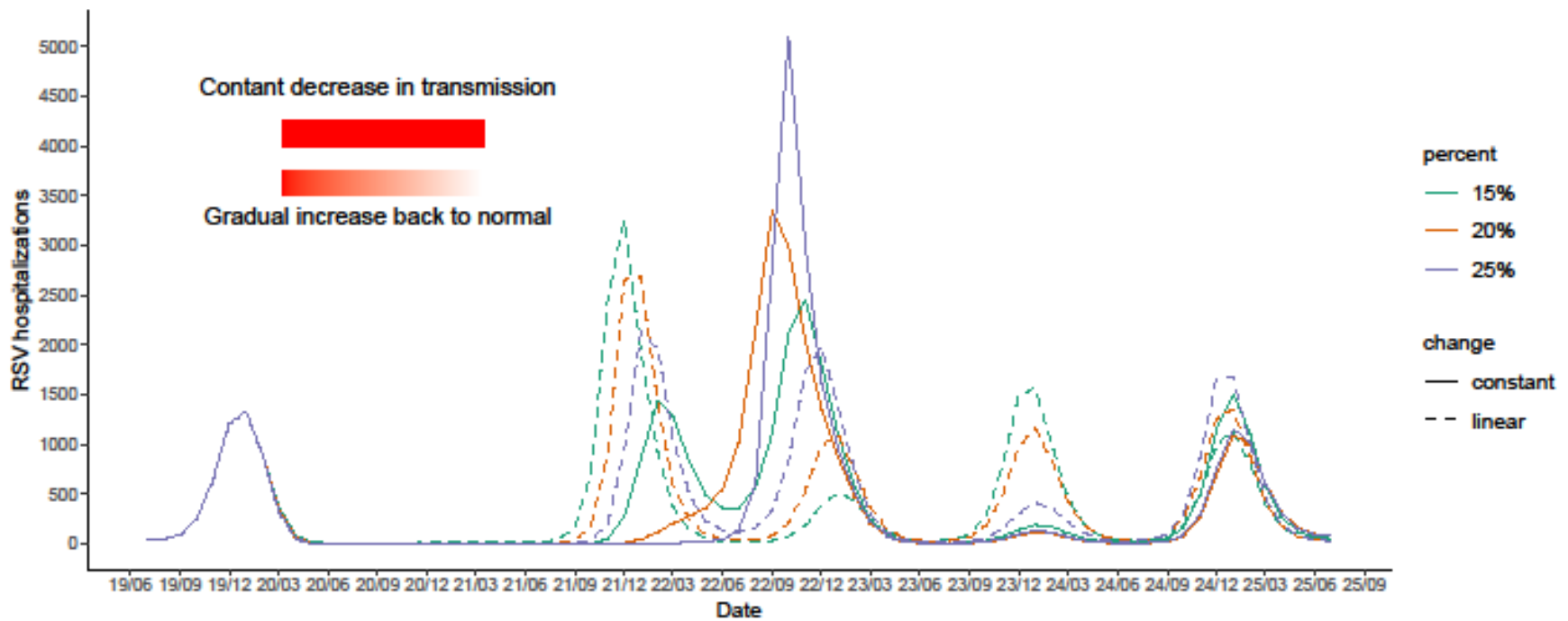
57 **Figure S2 Model fit to monthly RSV hospitalization data for New York.** The ICD9-CM coded hospitalization data is shown in
 58 blue and the fitted models are shown in red.



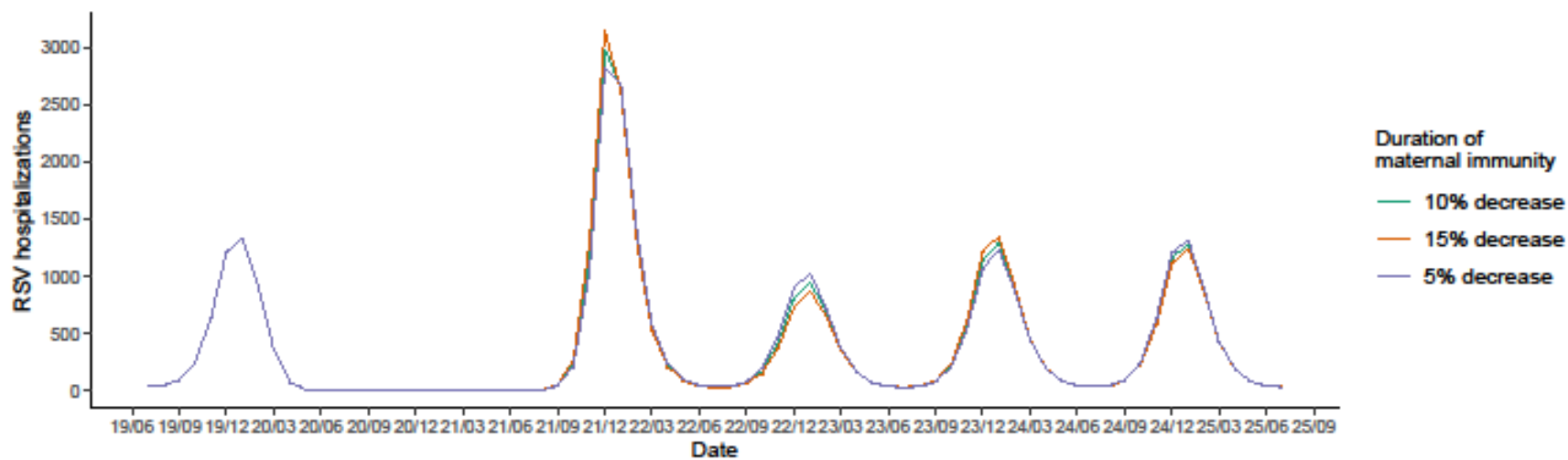
59

60 **Figure S3 Model fit to monthly RSV hospitalization data for California.** The ICD9-CM coded hospitalization data is shown in
 61 blue, the rescaled RSV positive percent data is shown in black, and the fitted models are shown in red.

62



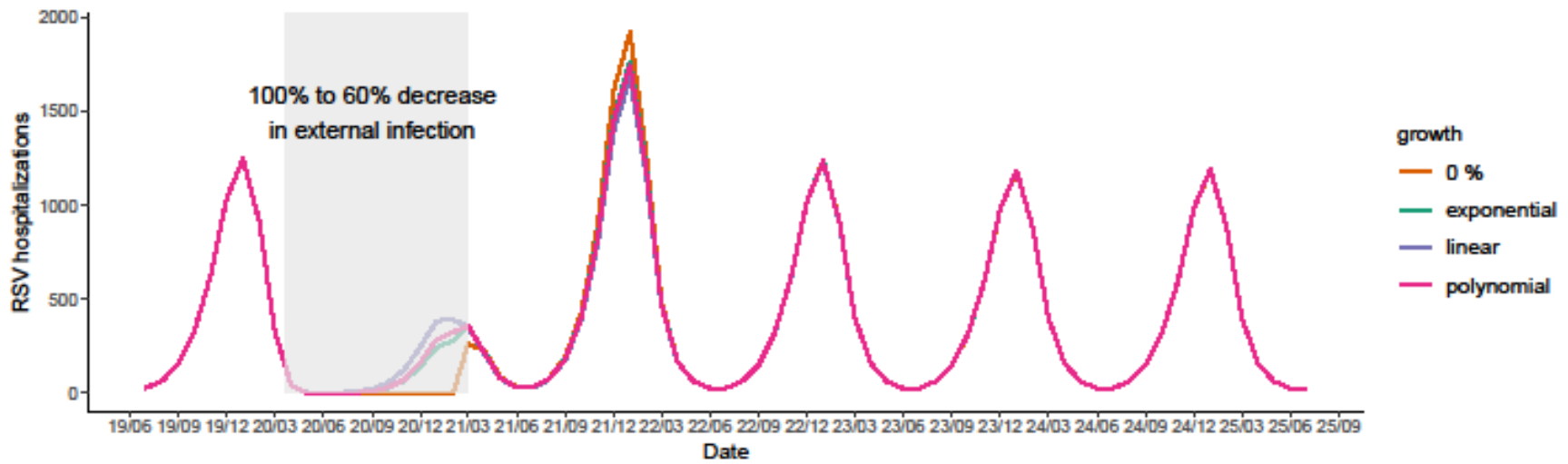
63
 64 **Figure S4. Expected RSV hospitalizations under different stringency of mitigation measures.** The color lines indicate the
 65 percentage decrease under either constant decrease or linear change scenario. The solid lines represent a constant decrease in transmission. The dash lines represent the RSV
 66 hospitalization incidence under the assumption that mitigation measures are most strict at the beginning and are gradually relaxed. The solid red rectangle and the gradient red
 67 rectangle indicate the length of the change period is from March 2020 to March 2021.



68
69

70 **Figure S5. The duration of transplacentally-acquired immunity in infants on RSV epidemics.** The colors of the lines show
71 different percentage decrease in the duration of transplacentally-acquired immunity in infants as a result of lack of boosting in pregnant women.

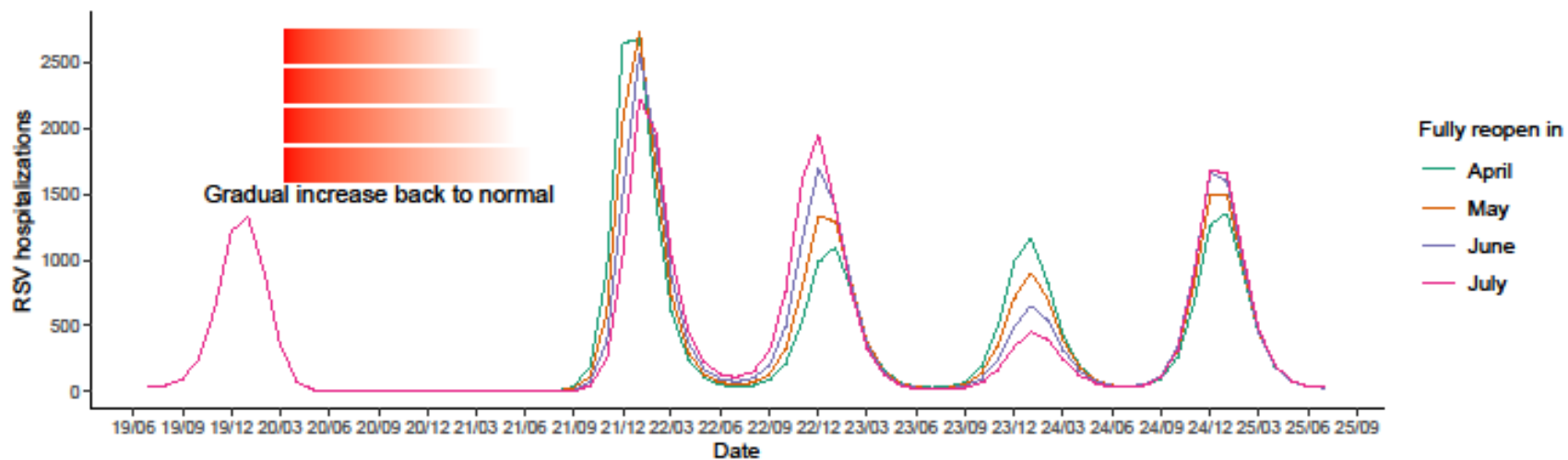
72



73
74

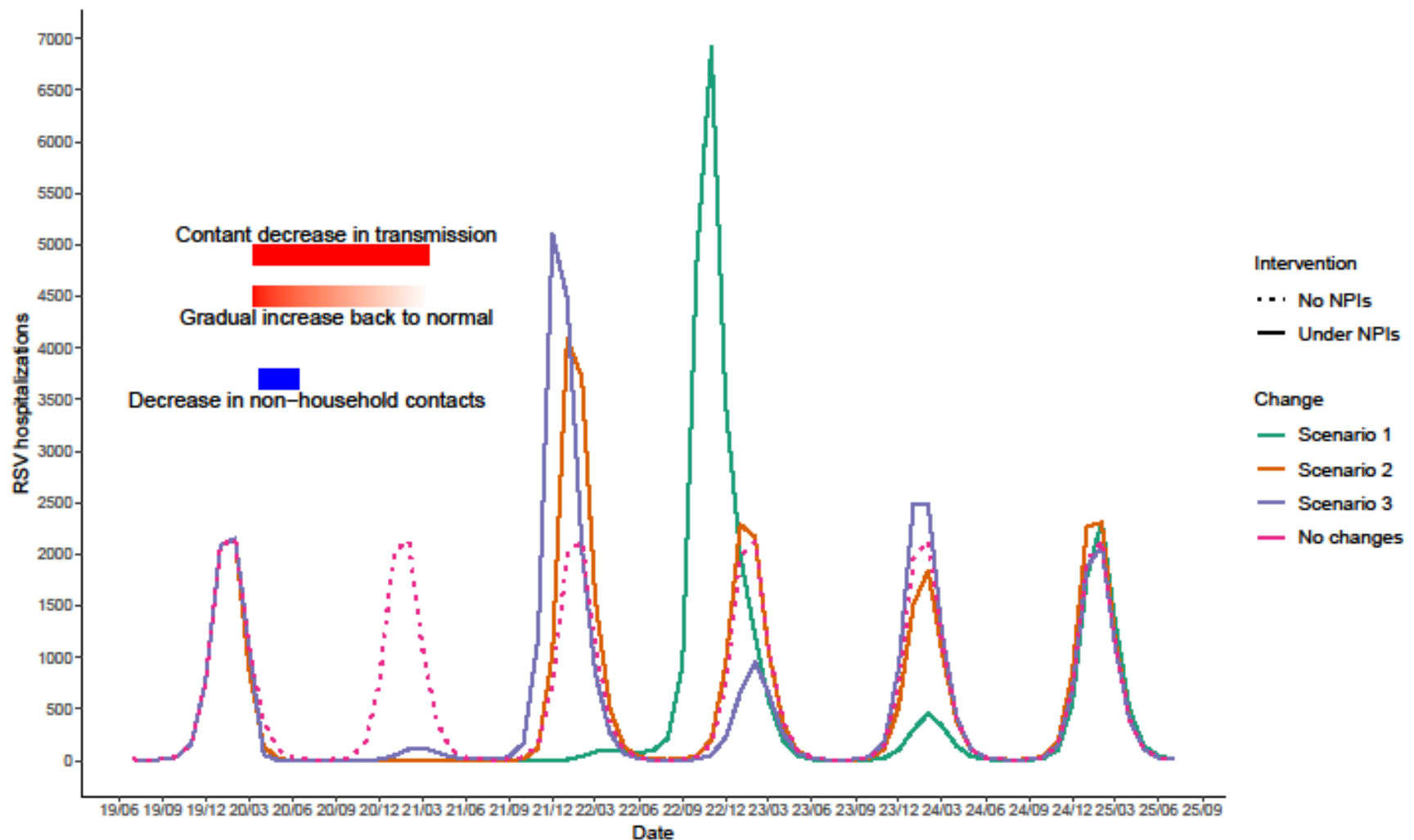
75 **Figure S6. External introduction of RSV infections on RSV epidemics.** This plot assumed a 5/100000 background external infections each
 76 month. The grey area indicates decreased external infections because of mitigation measures. The orange line shows the RSV epidemics if there were not external infections during
 77 April 1, 2020 to March 1, 2021. The green line, purple line and pink line indicate a sudden decrease in external infections at the beginning and a gradual increase with different growth
 78 rates.

79



80

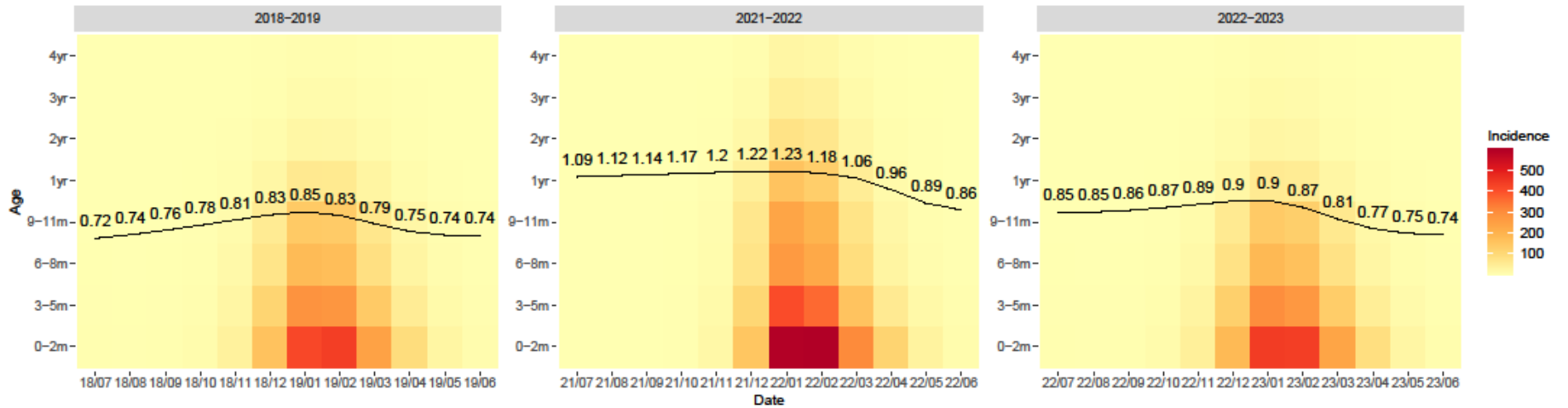
81 **Figure S7. The length of mitigation measures on RSV epidemics.** The colors of the lines show the expected RSV epidemics with different
 82 reopening dates in 2021 (first day of the month).



83
84

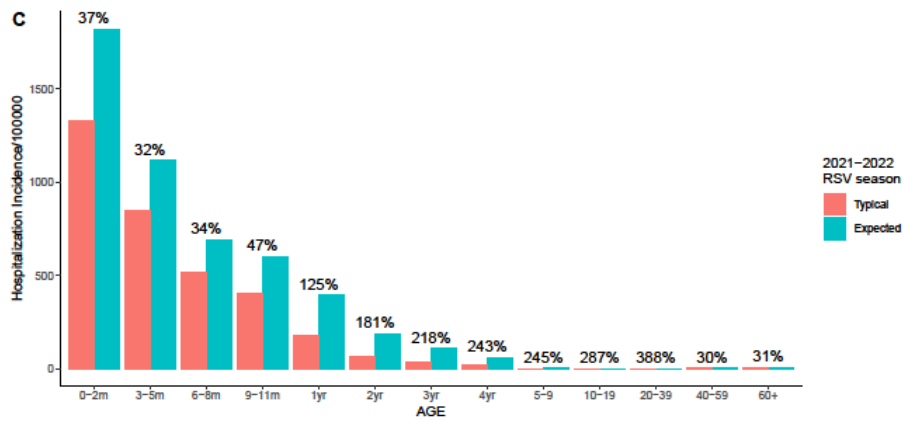
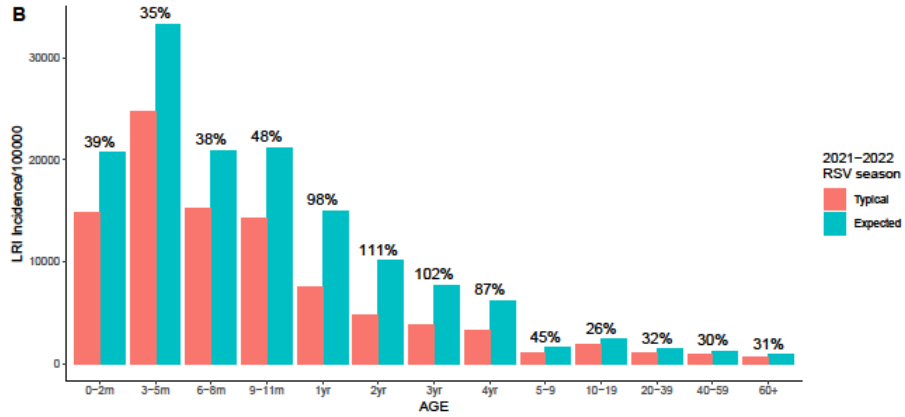
85 **Figure S8. Expected RSV hospitalizations under different scenarios, California, 2019–2025.** The dotted dark pink line shows the
 86 counterfactual scenario that there is no COVID-19 pandemic and no mitigation measures in place. The solid lines show three scenarios of stringency of mitigation measures. The
 87 green line represents Scenario 1: 20% constant decreased transmission from March 2020 to March 2021. The orange line represents Scenario 2: a sudden 20% decrease in RSV
 88 transmission in March 2020 followed by a linear increase back to normal. The purple line represents Scenario 3: 82% decreased non-household contacts and 10% increased

89 household contacts between April and July 2020. The red rectangle on the top, the gradient red rectangle in the middle and the blue rectangle on the bottom indicate the length and
90 the stringency of Scenario 1, Scenario 2 and Scenario 3, respectively.

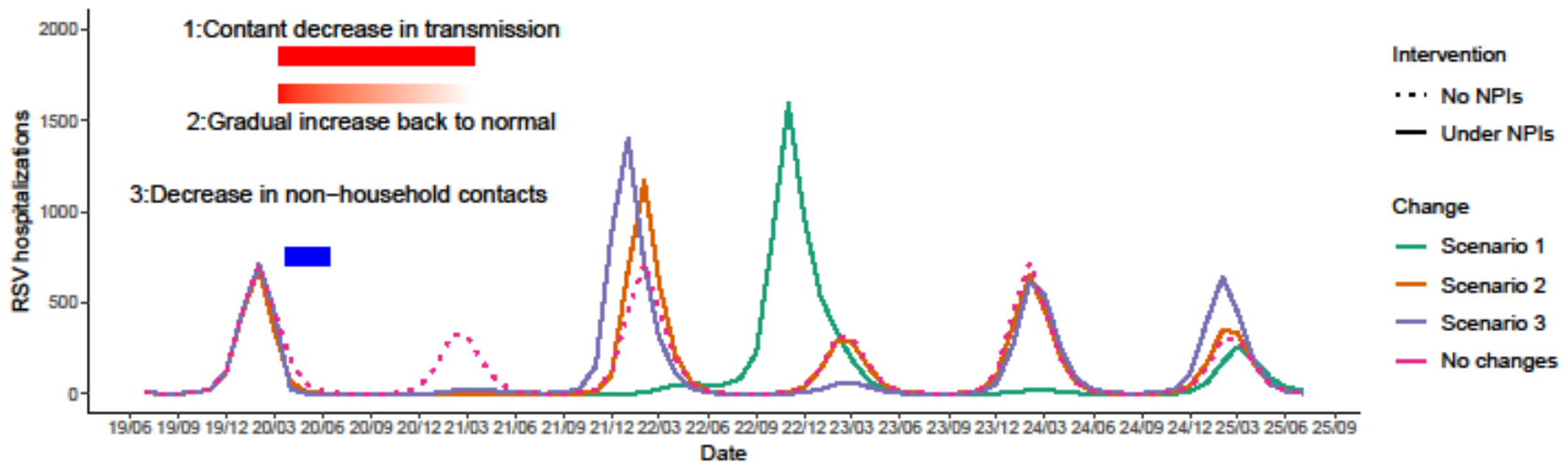


91
92

93 **Figure S9. The average age of hospitalization among children under 5 under Scenario 2, California.** The background color
94 represents the incidence of RSV hospitalization in each age group in each month. The darker color suggests a higher incidence. The black line and value indicate the average age of
95 hospitalization varies with time.



97 **Figure S10. Age distribution of RSV infections, LRIs and hospitalizations, California, 2021-2022 RSV season.** Panel A
98 to C correspond to RSV infections, RSV LRIs and RSV hospitalizations. The red color bars show the counterfactual incidence of RSV cases during 2021 to 2022 RSV season if there
99 was no COVID-19 pandemic and no mitigation measures in place. The blue color bars show the expected incidence of RSV cases under Scenario 2 during 2021 to 2022 RSV season.
100 The numbers on the top show the percentage difference between the expected incidence and the counterfactual incidence in each age group.

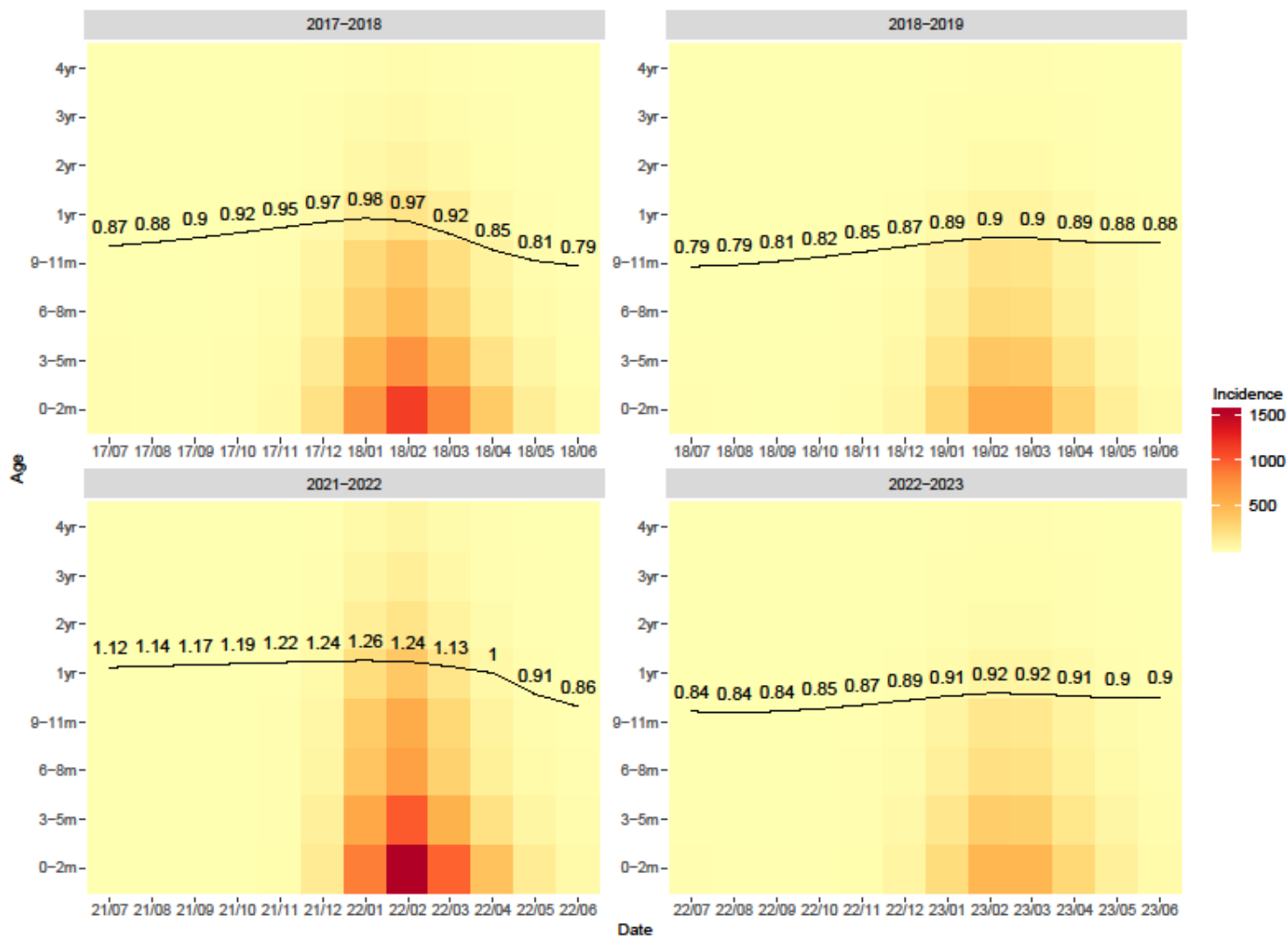


101
102

103 **Figure S11. Expected RSV hospitalizations under different scenarios for biennial epidemics peaking in even**

104 **years, 2019–2025.** The dotted dark pink line shows the counterfactual scenario that there is no COVID-19 pandemic and no mitigation measures in place. The solid lines
 105 show three scenarios of stringency of mitigation measures. The green line represents Scenario 1: 20% constant decreased transmission from March 2020 to March 2021. The orange
 106 line represents Scenario 2: a sudden 20% decrease in RSV transmission in March 2020 followed by a linear increase back to normal. The purple line represents Scenario 3: 82%
 107 decreased non-household contacts and 10% increased household contacts between April and July 2020. The red rectangle on the top, the gradient red rectangle in the middle and the
 108 blue rectangle on the bottom indicate the length and the stringency of Scenario 1, Scenario 2 and Scenario 3, respectively.

109

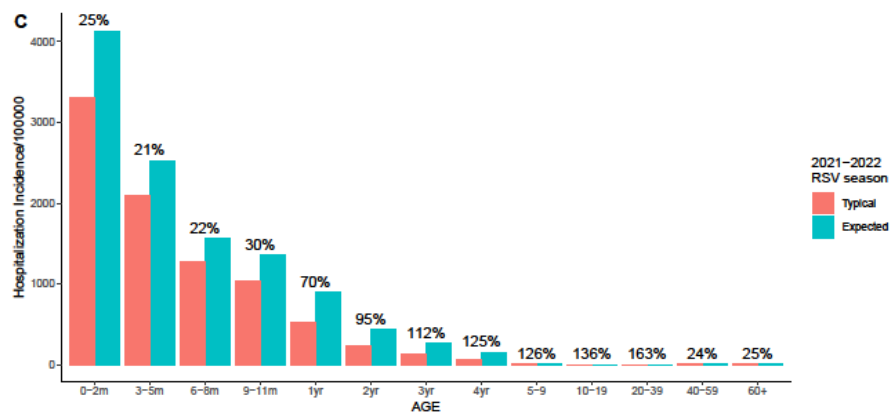
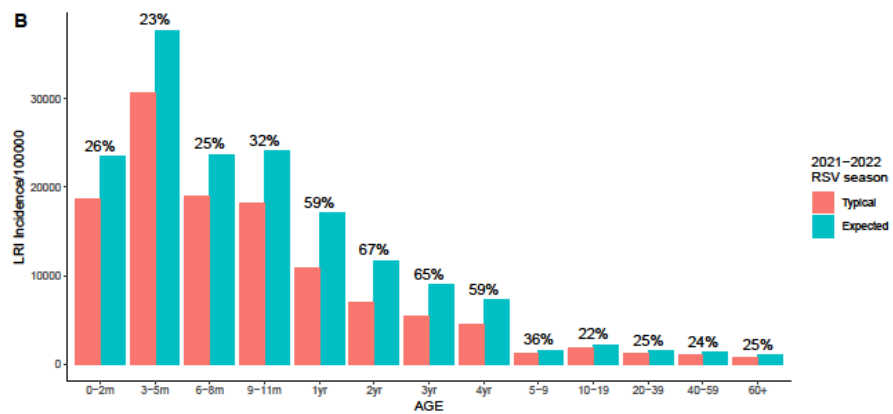
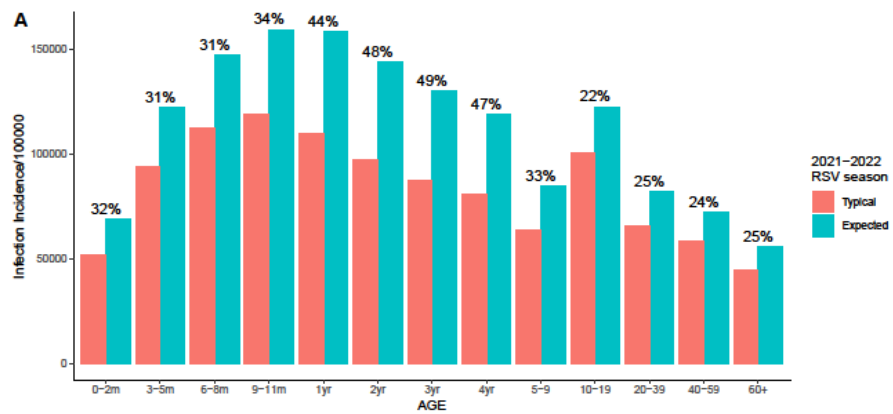


110

111 **Figure S12. The average age of RSV hospitalization for biennial epidemics peaking in even years among children**

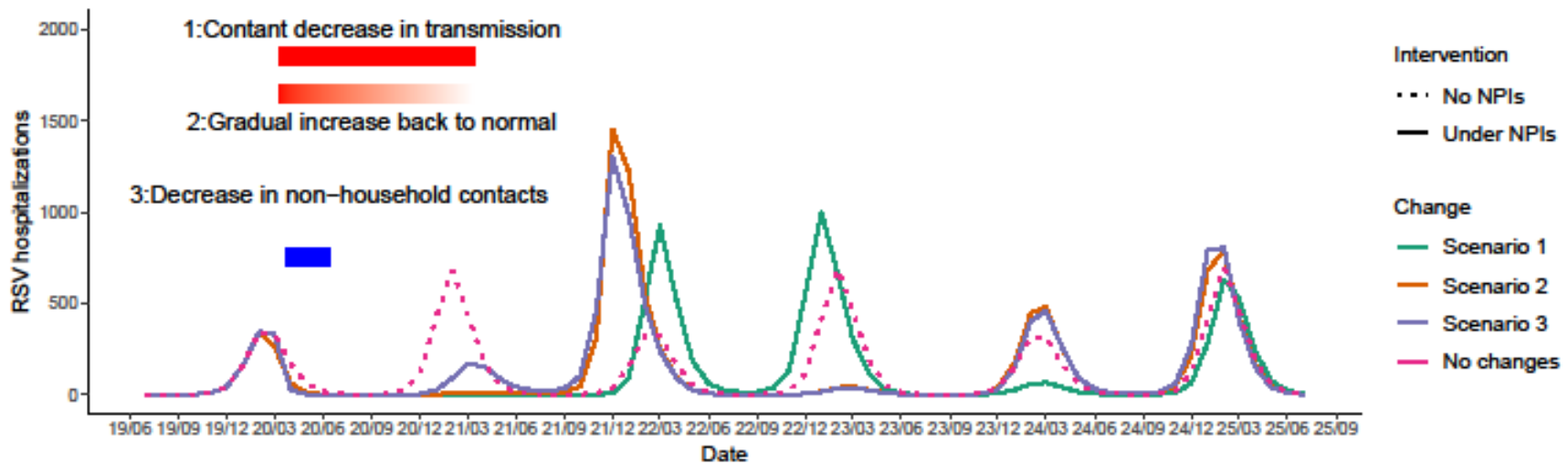
112 **under 5.** The background color represents the incidence of RSV hospitalization in each age group in each month. The darker color suggests a higher incidence. The black line

113 and value indicate the average age of hospitalization varies with time.



115 **Figure S13. Age distribution of RSV infections, LRIs and hospitalizations under the assumption that biennial**
116 **epidemics are greater in even years, 2021-2022 RSV season.** Panel A to C correspond to RSV infections, RSV LRIs and RSV hospitalizations. The
117 red color bars show the counterfactual incidence of RSV cases during 2021 to 2022 RSV season if there was no COVID-19 pandemic and no mitigation measures in place. The blue
118 color bars show the expected incidence of RSV cases under Scenario 2 during 2021 to 2022 RSV season. The numbers on the top show the percentage difference between the
119 expected incidence and the counterfactual incidence in each age group.

120



121
122

123 **Figure S14. Expected RSV hospitalizations under different scenarios for biennial epidemics peaking in odd years,**
 124 **2019–2025.** The dotted dark pink line shows the counterfactual scenario that there is no COVID-19 pandemic and no mitigation measures in place. The solid lines show three
 125 scenarios of stringency of mitigation measures. The green line represents Scenario 1: 20% constant decreased transmission from March 2020 to March 2021. The orange line
 126 represents Scenario 2: a sudden 20% decrease in RSV transmission in March 2020 followed by a linear increase back to normal. The purple line represents Scenario 3: 82%
 127 decreased non-household contacts and 10% increased household contacts between April and July 2020. The red rectangle on the top, the gradient red rectangle in the middle and the
 128 blue rectangle on the bottom indicate the length and the stringency of Scenario 1, Scenario 2 and Scenario 3, respectively.

129

130



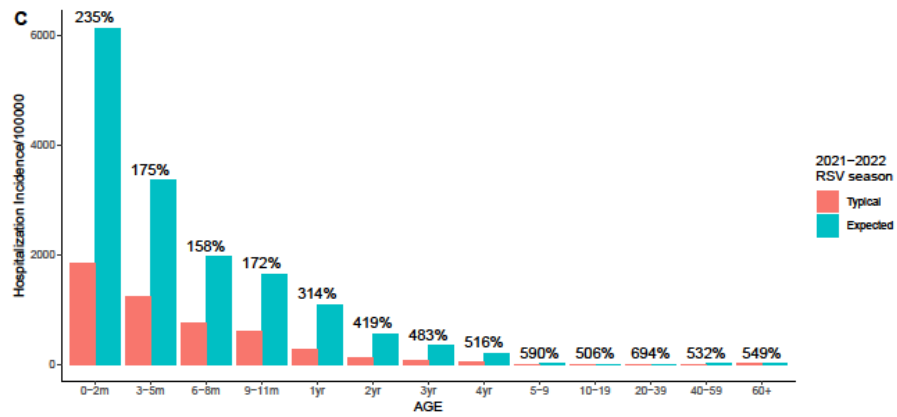
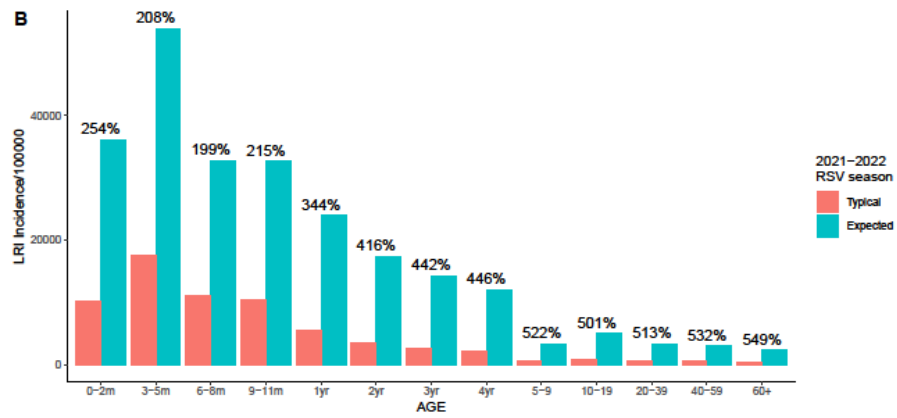
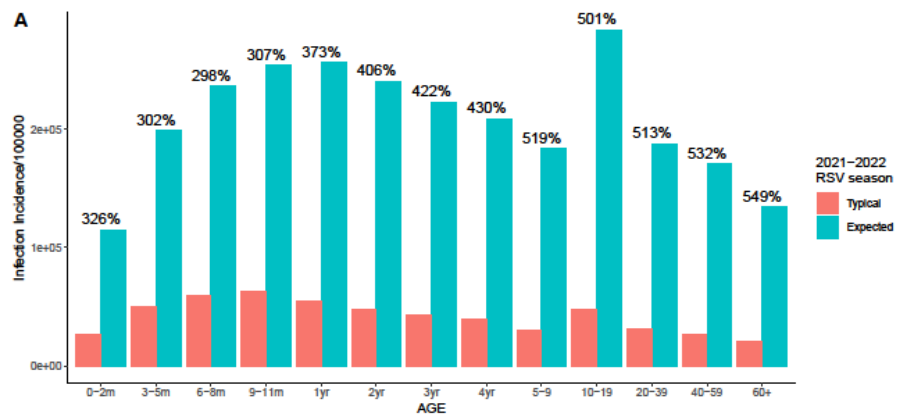
131

132 **Figure S15. The average age of RSV hospitalization for biennial epidemics peaking in odd years among children**

133 **under 5.** The background color represents the incidence of RSV hospitalization in each age group in each month. The darker color suggests a higher incidence. The black line

134 and value indicate the average age of hospitalization varies with time.

135



137 **Figure S16. Age distribution of RSV infections, LRIs and hospitalizations under the assumption that biennial**
138 **epidemics are greater in odd years, 2021-2022 RSV season.** Panel A to C correspond to RSV infections, RSV LRIs and RSV hospitalizations. The
139 red color bars show the counterfactual incidence of RSV cases during 2021 to 2022 RSV season if there was no COVID-19 pandemic and no mitigation measures in place. The blue
140 color bars show the expected incidence of RSV cases under Scenario 2 during 2021 to 2022 RSV season. The numbers on the top show the percentage difference between the
141 expected incidence and the counterfactual incidence in each age group.
142

143 **Reference:**

- 144 1. Prem K, Cook AR, Jit M. Projecting social contact matrices in 152 countries using contact surveys and demographic data. *PLoS Comput*
145 *Biol.* 2017;13(9):e1005697.
- 146 2. van Hoek AJ, Andrews N, Campbell H, Amirthalingam G, Edmunds WJ, Miller E. The social life of infants in the context of infectious
147 disease transmission; social contacts and mixing patterns of the very young. *PLoS one.* 2013;8(10):e76180.
- 148 3. Wallinga J, Teunis P, Kretzschmar M. Using data on social contacts to estimate age-specific transmission parameters for respiratory-
149 spread infectious agents. *American journal of epidemiology.* 2006;164(10):936-944.
- 150 4. Glezen WP, Taber LH, Frank AL, Kasel JA. Risk of Primary Infection and Reinfection With Respiratory Syncytial Virus. *American Journal of*
151 *Diseases of Children.* 1986;140(6):543-546.
- 152 5. Ohuma EO, Okiro EA, Ochola R, et al. The natural history of respiratory syncytial virus in a birth cohort: the influence of age and previous
153 infection on reinfection and disease. *American journal of epidemiology.* 2012;176(9):794-802.
- 154 6. Hacimustafaoglu M, Celebi S, Aynaci E, et al. The progression of maternal RSV antibodies in the offspring. *Archives of disease in*
155 *childhood.* 2004;89(1):52-53.
- 156 7. Jans J, Wicht O, Widjaja I, et al. Characteristics of RSV-Specific Maternal Antibodies in Plasma of Hospitalized, Acute RSV Patients under
157 Three Months of Age. *PLoS one.* 2017;12(1):e0170877.
- 158 8. Henderson FW, Collier AM, Clyde WA, Jr., Denny FW. Respiratory-syncytial-virus infections, reinfections and immunity. A prospective,
159 longitudinal study in young children. *The New England journal of medicine.* 1979;300(10):530-534.
- 160 9. Hall CB, Geiman JM, Biggar R, Kotok DI, Hogan PM, Douglas GR, Jr. Respiratory syncytial virus infections within families. *The New England*
161 *journal of medicine.* 1976;294(8):414-419.
- 162 10. Nokes DJ, Okiro EA, Ngama M, et al. Respiratory syncytial virus infection and disease in infants and young children observed from birth in
163 Kilifi District, Kenya. *Clinical infectious diseases : an official publication of the Infectious Diseases Society of America.* 2008;46(1):50-57.
- 164 11. Wright PF, Gruber WC, Peters M, et al. Illness severity, viral shedding, and antibody responses in infants hospitalized with bronchiolitis
165 caused by respiratory syncytial virus. *The Journal of infectious diseases.* 2002;185(8):1011-1018.
- 166 12. Walsh EE, Peterson DR, Kalkanoglu AE, Lee FE, Falsey AR. Viral shedding and immune responses to respiratory syncytial virus infection in
167 older adults. *The Journal of infectious diseases.* 2013;207(9):1424-1432.
- 168 13. Takeyama A, Hashimoto K, Sato M, Kawashima R, Kawasaki Y, Hosoya M. Respiratory syncytial virus shedding by children hospitalized
169 with lower respiratory tract infection. *Journal of medical virology.* 2016;88(6):938-946.
- 170 14. Munywoki PK, Koech DC, Agoti CN, et al. Influence of age, severity of infection, and co-infection on the duration of respiratory syncytial
171 virus (RSV) shedding. *Epidemiology and infection.* 2015;143(4):804-812.
- 172 15. Pitzer VE, Lipsitch M. Exploring the relationship between incidence and the average age of infection during seasonal epidemics. *J Theor*
173 *Biol.* 2009;260(2):175-185.
- 174 16. Menzies NA, Soeteman DI, Pandya A, Kim JJ. Bayesian Methods for Calibrating Health Policy Models: A Tutorial. *Pharmacoeconomics.*
175 2017;35(6):613-624.

- 176 17. Alkema L, Raftery AE, Brown T. Bayesian melding for estimating uncertainty in national HIV prevalence estimates. *Sex Transm Infect.*
177 2008;84 Suppl 1:i11-i16.
- 178 18. contributors W. Maximum a posteriori estimation.
179 https://en.wikipedia.org/w/index.php?title=Maximum_a_posteriori_estimation&oldid=932761908. Accessed 30 March 2020 03:24 UTC.
- 180 19. Ochola R, Sande C, Fegan G, et al. The level and duration of RSV-specific maternal IgG in infants in Kilifi Kenya. *PloS one.*
181 2009;4(12):e8088.
- 182 20. Hall CB, Douglas RG, Jr., Geiman JM. Respiratory syncytial virus infections in infants: quantitation and duration of shedding. *The Journal*
183 *of pediatrics.* 1976;89(1):11-15.
- 184 21. Monto AS, Bryan ER, Rhodes LM. The Tecumseh study of respiratory illness. VII. Further observations on the occurrence of respiratory
185 syncytial virus and Mycoplasma pneumoniae infections. *American journal of epidemiology.* 1974;100(6):458-468.
- 186 22. Pitzer VE, Viboud C, Alonso WJ, et al. Environmental Drivers of the Spatiotemporal Dynamics of Respiratory Syncytial Virus in the United
187 States. *PLOS Pathogens.* 2015;11(1):e1004591.
- 188 23. Munywoki PK, Koech DC, Agoti CN, et al. Frequent Asymptomatic Respiratory Syncytial Virus Infections During an Epidemic in a Rural
189 Kenyan Household Cohort. *The Journal of infectious diseases.* 2015;212(11):1711-1718.
- 190 24. Hall CB, Long CE, Schnabel KC. Respiratory syncytial virus infections in previously healthy working adults. *Clinical infectious diseases : an*
191 *official publication of the Infectious Diseases Society of America.* 2001;33(6):792-796.
- 192 25. Tong S, Amand C, Kieffer A, Kyaw MH. Incidence of respiratory syncytial virus related health care utilization in the United States. *J Glob*
193 *Health.* 2020;10(2):020422.
- 194 26. Takashima MD, Grimwood K, Sly PD, et al. Epidemiology of respiratory syncytial virus in a community birth cohort of infants in the first 2
195 years of life. *European journal of pediatrics.* 2021.
- 196 27. Fisher RG, Gruber WC, Edwards KM, et al. Twenty years of outpatient respiratory syncytial virus infection: a framework for vaccine
197 efficacy trials. *Pediatrics.* 1997;99(2):E7.
- 198 28. Stranak Z, Saliba E, Kosma P, et al. Predictors of RSV LRTI Hospitalization in Infants Born at 33 to 35 Weeks Gestational Age: A Large
199 Multinational Study (PONI). *PloS one.* 2016;11(6):e0157446.
- 200 29. Baker RE, Park SW, Yang W, Vecchi GA, Metcalf CJE, Grenfell BT. The impact of COVID-19 nonpharmaceutical interventions on the future
201 dynamics of endemic infections. *Proc Natl Acad Sci U S A.* 2020;117(48):30547-30553.
- 202 30. Feehan DM, Mahmud AS. Quantifying population contact patterns in the United States during the COVID-19 pandemic. *Nat Commun.*
203 2021;12(1):893.
- 204 31. Yan Y, Malik AA, Bayham J, Fenichel EP, Couzens C, Omer SB. Measuring voluntary and policy-induced social distancing behavior during
205 the COVID-19 pandemic. *Proc Natl Acad Sci U S A.* 2021;118(16).
- 206 32. Air Travel - Total - Seasonally Adjusted. U.S. Department of Transportation. Bureau of Transportation Statistics. February 2021;
207 <https://data.bts.gov/Research-and-Statistics/Air-Travel-Total-Seasonally-Adjusted/gmwv-css9>. Accessed May 5, 2021.