

1 **Antibody responses to BNT162b2 vaccination in Japan: Monitoring vaccine**  
2 **efficacy by measuring IgG antibodies against the receptor binding domain of**  
3 **SARS-CoV-2**

4  
5 **Running title: Determining vaccine efficacy by serological assay**

6  
7 Hidetsugu Fujigaki<sup>1,12\*</sup>, Yasuko Yamamoto<sup>1,12\*</sup>, Takenao Koseki<sup>2,3</sup>, Sumi Banno<sup>3</sup>,  
8 Tatsuya Ando<sup>4</sup>, Hiroyasu Ito<sup>4</sup>, Takashi Fujita<sup>4</sup>, Hiroyuki Naruse<sup>5</sup>, Tadayoshi Hata<sup>5</sup>,  
9 Saya Moriyama<sup>6</sup>, Yoshimasa Takahashi<sup>6</sup>, Tadaki Suzuki<sup>7</sup>, Takahiro Murakami<sup>8</sup>,  
10 Yukihiro Yoshida<sup>8</sup>, Yo Yagura<sup>8</sup>, Takayoshi Oyamada<sup>9</sup>, Masao Takemura<sup>1</sup>,  
11 Masashi Kondo<sup>3,10</sup>, Mitsunaga Iwata<sup>11</sup>, Kuniaki Saito<sup>1</sup>

12  
13 <sup>1</sup>Department of Advanced Diagnostic System Development, Fujita Health University  
14 Graduate School of Health Sciences, Toyoake, Aichi, Japan.

15 <sup>2</sup>Department of Clinical Pharmacy, Fujita Health University School of Medicine, Toyoake,  
16 Aichi, Japan.

17 <sup>3</sup>Center for Clinical Trial and Research Support, Fujita Health University School of  
18 Medicine, Toyoake, Aichi, Japan.

19 <sup>4</sup>Department of Clinical Laboratory, Fujita Health University Hospital, Toyoake, Aichi,  
20 Japan.

21 <sup>5</sup>Department of Medical Laboratory Science, Fujita Health University Graduate School of

22 Health Sciences, Toyoake, Aichi, Japan.

23 <sup>6</sup>Reserch Center for Drug and Vaccine Development, National Institute of Infectious  
24 Diseases, Tokyo, Japan.

25 <sup>7</sup>Department of Pathology, National Institute of Infectious Diseases, Tokyo, Japan.

26 <sup>8</sup>Diagnostics Research Laboratories, Diagnostics Technical Service & Research  
27 Operations, Diagnostics Division, FUJIFILM Wako Pure Chemical Corporation,  
28 Amagasaki, Hyogo, Japan.

29 <sup>9</sup>In Vitro Diagnostics Division, FUJIFILM Corporation, Tokyo, Japan.

30 <sup>10</sup>Department of Respiratory Medicine, Fujita Health University School of Medicine,  
31 Toyoake, Aichi, Japan.

32 <sup>11</sup>Department of Emergency and General Internal Medicine, Fujita Health University  
33 School of Medicine, Toyoake, Aichi, Japan.

34 <sup>12</sup>These authors contributed equally.

35

36 \*Corresponding author: Hidetsugu Fujigaki and Yasuko Yamamoto

37 Department of Advanced Diagnostic System Development,

38 Fujita Health University Graduate School of Health Sciences,

39 1-98 Dengakugakubo, Kutsukake-cho, Toyoake, Aichi 470-1192, Japan

40 Tel: +81-562-93-2543

41 Fax: +81-562-93-4595

42 E-mail: fujigaki@fujita-hu.ac.jp, yama-y@fujita-hu.ac.jp

43

44 **Key words:** COVID-19; SARS-CoV-2; Vaccine; BNT162b2; Serological assay

45

46 **Abbreviations:** SARS-CoV-2, severe acute respiratory syndrome coronavirus 2;

47 COVID-19, coronavirus disease 2019; RBD, receptor binding domain; CLEIA,

48 chemiluminescent enzyme immunoassay; S, spike; N, nucleocapsid; RBD-IgG, IgG

49 against RBD; PBS-T, Phosphate buffered saline containing 0.1% Tween 20; MNT,

50 microneutralization test titre

51

52 **Abstract**

53 **BACKGROUND:** To fight severe acute respiratory syndrome coronavirus 2  
54 (SARS-CoV-2), which causes coronavirus disease 2019 (COVID-19), mass vaccination  
55 has begun in many countries. To investigate the usefulness of a serological assay to  
56 predict vaccine efficacy, we analyzed the levels of IgG, IgM, and IgA against the receptor  
57 binding domain (RBD) of SARS-CoV-2 in the sera from BNT162b2 vaccinated  
58 individuals in Japan.

59 **METHODS:** This study included 219 individuals who received two doses of BNT162b2.  
60 The levels of IgG, IgM, and IgA against RBD were measured by enzyme-linked  
61 immunosorbent assay before and after the first and second vaccination, respectively.  
62 The relationship between antibody levels and several factors including age, gender, and  
63 hypertension were analyzed. Virus-neutralizing activity in sera was measured to  
64 determine the correlation with the levels of antibodies. A chemiluminescent enzyme  
65 immunoassay (CLEIA) method to measure IgG against RBD was developed and  
66 validated for the clinical setting.

67 **RESULTS:** The levels of all antibody isotypes were increased after vaccination. Among  
68 them, RBD-IgG was dramatically increased after the second vaccination. The IgG levels  
69 in females were significantly higher than in males. There was a negative correlation  
70 between age and IgG levels in males. The IgG levels significantly correlated with the  
71 neutralizing activity. The CLEIA assay measuring IgG against RBD showed a reliable  
72 performance and a high correlation with neutralizing activity.

73 **CONCLUSIONS:** Monitoring of IgG against RBD is a powerful tool to predict the efficacy  
74 of SARS-CoV-2 vaccination and provides useful information in considering a

75 personalized vaccination strategy for COVID-19.

76

## 77 **Introduction**

78           Coronavirus disease 2019 (COVID-19) is caused by severe acute respiratory  
79 syndrome coronavirus 2 (SARS-CoV-2) infection (1). Since the initial outbreak in Wuhan,  
80 China in late 2019, a health emergency with social and economic disruptions has spread  
81 worldwide. Efforts to develop a vaccine against SARS-CoV-2 to control the global  
82 COVID-19 pandemic became a global effort and resulted in the emergency approval of  
83 several vaccines (2-6).

84           One of the first approved COVID-19 vaccines, BNT162b2 (Pfizer/BioNTech), has  
85 shown promising efficacy in clinical trials (7, 8). BNT162b2 is an mRNA vaccine that  
86 expresses the full prefusion spike (S) glycoprotein of SARS-CoV-2. A two-dose regimen  
87 of BNT162b2 was found to be safe with 95% efficacy in preventing symptomatic  
88 COVID-19 in persons 16 years of age or older (8). Following the authorization of  
89 COVID-19 vaccines for emergency use by the U.S. Food and Drug Administration on  
90 December 11<sup>th</sup>, 2020, a mass vaccination campaign began throughout the world.

91           Now that it has been demonstrated that the COVID-19 vaccines can induce a  
92 humoral response thereby protecting individuals from symptomatic COVID-19, several  
93 studies attempted to use serological assays to detect antibody production following  
94 COVID-19 vaccination (9-13). To monitor the efficacy of vaccines, antibody titer can be  
95 used to predict protection against SARS-CoV-2, which is already done as a routine  
96 laboratory testing for many viruses, such as measles morbillivirus, rubella virus, and  
97 hepatitis virus.

98           There is consensus that serological assays are helpful for predicting vaccine  
99 efficacy; however, a variety of antigens used to detect antibodies and a variety of  
100 antibody isotypes measured in these assays may cause issues with interpreting the

101 results (14, 15). Also, to monitor the efficacy of a vaccine by measuring antibodies  
102 against SARS-CoV-2 in the clinical laboratory, it is necessary to measure antibodies that  
103 are highly correlated with the serum neutralizing activity. A previous study from our group  
104 determined the kinetics and neutralizing activity of various antigen-specific antibody  
105 isotypes against SARS-CoV-2 in the serum of patients with COVID-19 (16). This study  
106 used enzyme-linked immunosorbent assay (ELISA) to measure IgG, IgM, and IgA for  
107 various antigens, including the full-length S, S1, receptor binding domain (RBD), and  
108 nucleocapsid (N) proteins. As a result, the measurement of IgG against the RBD  
109 (RBD-IgG) not only showed good clinical performance for diagnosing SARS-CoV-2  
110 infection, but also exhibited a high correlation with serum neutralizing activity. Therefore,  
111 monitoring RBD-IgG may be the best indicator to quantifying the immunogenicity of  
112 vaccines.

113 To evaluate the usefulness of measuring anti-SARS-CoV-2 antibodies to monitor  
114 vaccination efficacy, we analyzed antibody responses including RBD-IgG, -IgM, and -IgA  
115 after the first and second dose of the BNT162b2 vaccine in a well-defined cohort of  
116 employees in Japan. We also analysed how the antibody response changes in  
117 correlation with several factors such as age, gender, and hypertension. Furthermore, we  
118 examined which antibody isotypes against RBD were strongly correlated with the  
119 neutralization titer. Finally, we developed and validated a chemiluminescent enzyme  
120 immunoassay (CLEIA) method to measure RBD-IgG for clinical settings. This study not  
121 only provides valuable information with respect to antibody responses after BNT162b2  
122 vaccination in the Japanese population, but also the usefulness of RBD-IgG for  
123 monitoring vaccine efficacy in clinical laboratories.

124 **Materials and Methods**

125 ***Ethics statement, participants, and sample processing***

126 This study was approved by the Ethics Committee for Clinical Research of the  
127 Center for Research Promotion and Support at Fujita Health University (authorization  
128 number HM20-526 and HM21-167). The study was carried out with accordance to  
129 Declaration of Helsinki. All participants provided written informed consent before  
130 undergoing any study procedure.

131 The study included a series of 219 employees at Fujita Health University, who  
132 received two doses of BNT162b2 at Fujita Health University Hospital. The demographic  
133 and clinical characteristics of the participants are presented in Table 1. No participant  
134 had a history of SARS-CoV-2 infection. Blood samples were collected from all  
135 participants 3 times; 1) before the first vaccination, 2) an average of 14.6 days after the  
136 first vaccination, and 3) an average of 14.3 days after the second vaccination. Serum  
137 was obtained by centrifugation for 15 min at 1,500 g at room temperature, aliquoted and  
138 stored at  $-80^{\circ}\text{C}$  until use.

139 To compare the hypertension and control groups, we selected 45 samples (18  
140 hypertension subjects and 27 age-matched controls) from this cohort. The subjects in  
141 the hypertension group were selected according to the following criteria: subjects  
142 diagnosed with hypertension, regardless of uses of antihypertensive medications. The  
143 subjects in the control group were selected according to the following criteria: no current  
144 medications. To compare the allergy and control groups, we selected 174 samples (101  
145 allergy subjects and 73 age-matched controls) from this cohort. The subjects in the  
146 allergy group were selected according to the following criteria: subjects diagnosed with



147 allergy regardless of uses of anti-allergy medications. Those in the control group were  
148 selected according to the following criteria: no current medications.

149 For correlation analysis between antibody titers and neutralization activity using  
150 COVID-19 patient sera, we used 53 residual serum samples from 38 patients who were  
151 admitted to Fujita Health University Hospital from 28 February 2020 to 16 September  
152 2020.

153

### 154 ***Measurement of RBD-IgG, IgM, and IgA by ELISA***

155 RBD-IgG was measured using an ELISA kit from FUJIFILM Wako Pure  
156 Chemical Corporation. All procedures were performed in accordance with the  
157 manufacturer's instructions. IgM and IgA in serum samples were measured using ELISA  
158 assays that were developed in the previous study (16). Briefly, 96-well plates (Thermo  
159 Fisher Scientific) were coated with 250 ng of recombinant RBD protein (Acro  
160 Biosystems) and used for ELISA assays. Fifty microliter of each serum sample, which  
161 were diluted 1:201 for IgA assays or 1:2010 for IgM assays in PBS containing 2% bovine  
162 serum albumin, were added per well and incubated at room temperature for 60 min. The  
163 plates were washed three times with PBS containing 0.1% Tween 20 (PBS-T),  
164 peroxidase-labelled anti-human IgM or IgA antibody (Midrand Bioproducts) was added  
165 as secondary antibody and incubated at room temperature for 60 min. After incubation,  
166 the plates were washed five times with PBS-T and substrate solution (TMB/H<sub>2</sub>O<sub>2</sub>)  
167 (FUJIFILM Wako Pure Chemical) was added and incubated at room temperature for 10  
168 min. The reaction was stopped by the addition of 1 M HCl and the absorbance was  
169 measured at 450 nm using a 620 nm reference filter using a microplate reader

170 (Molecular Devices). Serially diluted pooled serum from 10 patients with COVID-19 who  
171 had strong IgA positivity and 5 patients who had strong IgM positivity were used to  
172 prepare a standard curve. The OD450 of the standard of 0.015 was converted to 1 U/mL  
173 and these values were fitted onto a line graph using linear regression analysis. The  
174 antibody units in the test serum samples were then calculated from their OD450 values  
175 using the parameters estimated from the standard curve.

176

### 177 ***SARS-CoV-2 neutralizing assay***

178 The neutralizing assay was conducted according to the method described in a  
179 previous report with minor modifications (16, 17). Briefly, serum samples were  
180 heat-inactivated at 56°C for 30 min and then serially diluted with Dulbecco's Modified  
181 Eagle medium (FUJIFILM Wako Pure Chemical) supplemented with 2% fetal bovine  
182 serum (Biowest), 100 U/mL penicillin and 100 mg/mL streptomycin (Thermo Fisher  
183 Scientific). The mixture of diluted sera and 100 tissue culture infectious dose 50  
184 hCoV-19/Japan/TY-WK-521/2020 strain (EPI\_ISL\_408667) were incubated at 37°C and  
185 5% CO<sub>2</sub>. On day 5, the plates were fixed with 20% formalin (FUJIFILM Wako Pure  
186 Chemical) and stained with crystal violet solution (Sigma-Aldrich) to evaluate the  
187 cytopathic effect. The index of the highest serum dilution factor with cytopathic effect  
188 inhibition was defined as the microneutralization test titer (MNT).

189

### 190 ***Measurement of RBD-IgG by CLEIA***

191 We utilized another laboratory test kit (18) for the Accuraseed automated  
192 immunoassay system (FUJIFILM Wako Pure Chemical Corporation) to develop a CLEIA

193 method to measure RBD-IgG in serum samples. Principle and procedures of RBD-IgG  
194 measurement by Accuraceed is shown in Fig. S1. A 10  $\mu$ L serum sample and 140  $\mu$ L of  
195 an immune reaction buffer were added to 12.5  $\mu$ g of recombinant SARS-CoV-2  
196 RBD-bound particles and incubated at 37°C for 3 min. After the bound and free fractions  
197 were separated, 50  $\mu$ L of peroxidase-labelled anti-human IgG antibody was added and  
198 incubated at 37°C for 3 min, followed by separation of the bound and free fractions.  
199 Finally, 100  $\mu$ L of the substrate solution and 100  $\mu$ L of the hydrogen peroxide solution  
200 were added, and the amount of light emitted per unit time was measured. Using pooled  
201 serum from the patients with COVID-19 described above in the ELISA assay, a standard  
202 curve was generated, and the sample luminescence was applied to the calibration curve  
203 to calculate the RBD-IgG antibody units in the serum samples. The basic performance of  
204 the assay such as limit of quantification, limit of detection, accuracy and precision are  
205 provided in the supplementary information (Fig. S2–S4, Table S1–S3).

206

### 207 ***Statistical analysis***

208 Statistical analysis was performed using GraphPad Prism version 8.4.3 for  
209 windows (GraphPad Software). Quantitative data were analyzed by a two-tailed  
210 Mann–Whitney U test and  $p < 0.05$  was considered statistically significant. Correlation  
211 analysis was performed using Spearman's correlation test. Linear regression was  
212 performed to assess the correlation of RBD-IgG levels between Accuraseed and ELISA.

213

## 214 **Results**

215           Volunteers (n = 219) that participated in this study were vaccinated with two  
216 doses of BNT162b2 mRNA vaccine. The characteristics of the subjects are shown in  
217 Table 1. Serum was collected 3 times according to the following time points: before the  
218 first vaccination, after the first vaccination, and after the second vaccination. The  
219 antibody titer of RBD-IgG, IgM and IgA were measured by ELISA assay. All antibody titer  
220 increased after the first and second vaccinations compared with before the first  
221 vaccination, but dramatically increased after the second vaccination (Fig. 1). The IgG  
222 titers in the serum of all subjects ranged between 0.0 and 1.8 U/mL with a mean of  $0.1 \pm$   
223  $0.2$  U/mL before the first vaccination, between 0.0 and 100.9 U/mL with a mean of  $11.8 \pm$   
224  $12.8$  U/mL after the first vaccination and between 17.2 and 762.4 U/mL with a mean of  
225  $246.6 \pm 153.6$  U/mL after the second vaccination (Fig. 1A). The average titer after the  
226 second vaccination increased more than 20 times from the average titer after the first  
227 vaccination ( $p < 0.01$ ). In serum after the second vaccination, IgM titers in all subjects  
228 ranged between 0.7 and 146.8 U/mL with a mean of  $8.7 \pm 13.1$  U/mL and IgA titers  
229 ranged between 2.1 and 127.5 U/mL with a mean of  $34.1 \pm 21.5$  U/mL (Fig. 1B and C).

230           The antibody titers showed differences between genders. Each antibody titer  
231 was compared between males and females. The IgG titer after the second vaccination of  
232 females was significantly higher compared with that of males ( $p < 0.05$ ) (Fig. 1D). The  
233 average antibody titer was  $263.6 \pm 158.0$  U/mL for females and was  $209.9 \pm 137.6$  U/mL  
234 for males. Previous data showed that age was also an important factor of antibody titer  
235 after vaccination (9). Therefore, correlations were established between age and each  
236 antibody titer. In males, age correlates negatively with RBD-IgG ( $r = -0.410$ ) and IgM ( $r$

237 = -0.283) (Fig. 2A and B, upper panel). In contrast, each antibody titer did not show a  
238 correlation with age for females (Fig. 2, lower panel). Several diseases, such as cancer,  
239 chronic kidney disease, hypertension, and diabetes, have been reported to be  
240 associated with the severity of COVID-19. The IgG titers of hypertensive subjects were  
241 significantly decreased compared to control subjects in male, but there was no difference  
242 in female (Fig. 3A). Antibody titer did not show differences between those with allergies  
243 and no medical treatment controls (Fig. 3B).

244 For the protection against COVID-19 infection, whether the antibody exhibits  
245 neutralizing activity produced by vaccination is the most important factor. Among 219  
246 serum samples collected from subjects after the second vaccination, 30 samples were  
247 selected considering the distribution of antibody levels and virus-neutralizing activity was  
248 assessed. The correlation between antibody titer of IgG, IgM, and IgA and  
249 virus-neutralizing activity was examined in the serum of subjects after the second  
250 vaccination. Neutralizing activity correlated positively with IgG, IgM, and IgA titer (Fig. 4).  
251 Among the isotypes, IgG showed a higher correlation with neutralizing activity ( $r =$   
252 0.896).

253 A rapid and accurate method to monitor antibody titers is a useful tool to  
254 investigate the efficacies of vaccination in clinical laboratories. Therefore, we developed  
255 a new CLEIA method using a two-step sandwich method to measure anti-SARS-CoV-2  
256 antibody with the Accuraseed automated immunoassay system. This method measured  
257 antibody titers within about 10 minutes (Fig. S1). To validate the CLEIA assay, the limit of  
258 blank, limit of detection and limit of quantification, repeatability (intra-day precision) and  
259 linearity within assay range were established (Fig. S2–S4, Table S1–S3). To assess this

260 new method, we examined the relationship between RBD-IgG levels measured by ELISA  
261 and that of the CLEIA assay. The correlation was determined between RBD-IgG levels  
262 by ELISA and RBD-IgG levels by CLEIA assay ( $R = 0.979$ ,  $y = 0.92x - 0.27$ ) (Fig. 5A).  
263 Furthermore, the levels of the RBD-IgG by CLEIA assay correlated with the  
264 virus-neutralizing activity ( $r = 0.869$ ) (Fig. 5B). Increasing evidence suggests that  
265 disease severity is positively correlated with higher antibodies, of which IgG subclasses  
266 exhibited a weakly negative correlation with viral load. We compared the RBD-IgG levels  
267 by CLEIA assay with virus-neutralizing activity in patients with COVID-19. RBD-IgG  
268 levels determined by CLEIA assay in patients with COVID-19 showed a good correlation  
269 with neutralizing activity ( $r = 0.723$ ) (Fig. S5). These data indicate that the CLEIA assay  
270 is a useful tool to validate the efficiency of vaccination and monitor the severity of  
271 COVID-19 in patients.  
272

## 273 **Discussion**

274           This study investigated the antibody response produced by the SARS-CoV-2  
275 vaccination in a well-defined cohort of employees in Japan. In all enrolled subjects, the  
276 levels of RBD-IgG, IgM and IgA antibody increased after vaccination compared to before  
277 the first vaccination. The levels of RBD-IgG in serum after the second vaccination  
278 showed a higher correlation with the virus-neutralizing activity compared with that of the  
279 other isotypes. A previous study which used COVID-19 patient serum showed that the  
280 levels of RBD-IgG were useful markers for diagnosing SARS-CoV-2 infection and  
281 neutralizing activity (16). These data indicate that the second dose vaccination  
282 potentiates neutralizing activity against COVID-19.

283           Persons who have been infected with SARS-CoV-2 are thought to have  
284 protective immunity and memory responses (19). IgM antibodies against SARS-CoV-2  
285 are the first isotype to be generated against the novel antigen and can be detected as  
286 early as day 3 post COVID-19 symptoms (20). IgA antibodies also plays an important  
287 role in mucosal immunity. IgA is the most important immunoglobulin for fighting infectious  
288 pathogens in the respiratory and digestive systems at the point of pathogen entry. As an  
289 immune barrier, secretory IgA can neutralize SARS-CoV-2 before it reaches and bind to  
290 epithelial cells (20). The present data show that the antibody titer of IgG, IgM, and IgA  
291 significantly increased after the second vaccination compared with before the first  
292 vaccination (Fig. 1). In some subjects, the levels of IgA or IgM antibody increased  
293 immediately after the first vaccination and decreased after the second vaccination (Fig.  
294 1B and C). Further studies are needed to monitor the effects of isotype differences  
295 during SARS-CoV-2 infection, but our data suggest that two doses of vaccine is valuable

296 to protect from the infection of SARS-CoV-2 because the titer of all isotypes increased in  
297 all subjects after the second dose of vaccine.

298 The RBD-IgG levels after the second vaccination of males were significantly  
299 lower compared with those of females (Fig. 1D). Several studies suggest that there are  
300 many differences between males and females with respect to the immune response to  
301 SARS-CoV-2 infection and inflammatory diseases (21). Females generally produce  
302 higher levels of antibodies which remain in the circulation longer. The activation of  
303 immune cells is higher in females than males, and it correlates with the trigger of TLR7  
304 and the production of interferon. Therefore, women with COVID-19 show a better  
305 outcome than men with the infection (22). These studies support our findings that  
306 females have a higher antibody-producing ability than males following the vaccination.

307 In the present study, elderly males had a lower RBD-IgG antibody-producing  
308 ability than their younger counterparts (Fig. 2A). Previous data have shown that there are  
309 age-related differences in antibody responses raised after BNT162b2 vaccination, in  
310 particular, lower frequencies of neutralizing antibodies in the elderly group (12). These  
311 data suggest that the vaccination is effective for all ages, but it is important to continue  
312 preventive measures for COVID-19, especially in elderly males at least until more  
313 longitudinal real-world data emerges.

314 Several diseases, such as cancer, chronic kidney disease, hypertension and  
315 diabetes, have been reported to be associated with the severity of COVID-19. The  
316 present results show that the antibody titers of hypertensive subjects in male were  
317 significantly lower compared with control subjects, but there was no statistical difference  
318 in females. Also, our analysis showed that there was no correlation between antibody



319 titer and allergies. A previous study using a cohort of 248 health care workers in Italy  
320 reported that age and gender were statistically associated with differences in antibody  
321 response after vaccination, which is consistent with our results, whereas body mass  
322 index and hypertension had no statistically significant association. Further studies are  
323 needed to investigate what factors influence antibody responses from SARS-CoV-2  
324 vaccination using a larger cohort.

325 We developed and validated a new method for measuring RBD-IgG using an  
326 automated CLEIA method. RBD-IgG measured by Accuraseed is a rapid, accurate and  
327 precise method that strongly correlates with neutralizing activity (Fig. 5, Fig. S2–S5,  
328 Tables S1–S3). Since monitoring antibody response that correlates with neutralizing  
329 activity after SARS-CoV-2 vaccination is highly advisable for predicting protection  
330 against SARS-CoV-2, this method may become a useful tool to monitor the efficacy of  
331 vaccination in clinical laboratories.

332 In conclusion, this study demonstrated that IgG, IgM, and IgA antibodies against  
333 RBD were produced after BNT162b2 vaccination in all subjects. Among these antibodies,  
334 RBD-IgG correlated best with neutralizing activity. These results suggest that monitoring  
335 of RBD-IgG is a powerful tool to predict efficacy of SARS-CoV-2 vaccination. The level of  
336 RBD-IgG after the second vaccination was affected by gender and age, which provide  
337 useful information to consider a personalized vaccination strategies for COVID-19.

338

### 339 **Acknowledgments**

340 We thank all the participants for participating in this study. We also thank the support  
341 from medical technologists and clinical research coordinators at the Fujita Health

342 University Hospitals. We acknowledge Aika Kosuge, Nao Sueda, Rika Sakai, Hitomi  
343 Kurahashi, Yumika Sugawara, Masaya Hasegawa, Honomi Ando, and Maki Namikawa  
344 for collecting the samples, and Dr. Yohei Doi for proofreading the manuscript.

345

#### 346 **Funding**

347 This study was supported by the Japan Agency for Medical Research and Development  
348 (JP19fk0108110, JP20fk0108534, and JP20he1122003) and the FUJIFILM Wako Pure  
349 Chemical Corp.

350

#### 351 **Author Contributions**

352 H. Fujigaki, Y. Yamamoto, H. Ito, Y. Takahashi, T. Suzuki, Y. Yagura, T. Oyamada, M.  
353 Takemura, and K. Saito conceived and planned the experiments. H. Fujigaki, Y.  
354 Yamamoto, T. Ando, S. Moriyama, T. Murakami, and Y. Yoshida contributed to data  
355 acquisition and analysis. H. Fujigaki and Y. Yamamoto wrote the manuscript. T. Koseki, S.  
356 Banno, H. Ito, T. Fujita, H. Naruse, T. Hata, M. Kondo, and M. Iwata contributed to the  
357 recruitment of subjects and sample processing. H. Fujigaki, Y. Yamamoto, T. Koseki, H.  
358 Ito, Y. Takahashi, T. Suzuki, T. Murakami, Y. Yoshida, Y. Yagura, and K. Saito contributed  
359 to interpretation of the results.

360

#### 361 **Conflict of Interest**

362 T. Murakami, Y. Yoshida, and Y. Yagura are employees of FUJIFILM Wako Pure  
363 Chemical Corp. T. Oyamada is an employee of FUJIFILM Corp. The other authors have  
364 no financial conflicts of interest.

## 365 **References**

- 366 1. Zhu N, Zhang D, Wang W, Li X, Yang B, Song J, Zhao X, et al. A Novel  
367 Coronavirus from Patients with Pneumonia in China, 2019. *N Engl J Med* 2020  
368 Feb 20;382 8:727-33. Epub 2020/01/25 as doi: 10.1056/NEJMoa2001017.
- 369 2. Zhu FC, Li YH, Guan XH, Hou LH, Wang WJ, Li JX, Wu SP, et al. Safety,  
370 tolerability, and immunogenicity of a recombinant adenovirus type-5 vectored  
371 COVID-19 vaccine: a dose-escalation, open-label, non-randomised,  
372 first-in-human trial. *Lancet* 2020 Jun 13;395 10240:1845-54. Epub 2020/05/26 as  
373 doi: 10.1016/S0140-6736(20)31208-3.
- 374 3. Sahin U, Muik A, Derhovanessian E, Vogler I, Kranz LM, Vormehr M, Baum A, et  
375 al. COVID-19 vaccine BNT162b1 elicits human antibody and TH1 T cell  
376 responses. *Nature* 2020 Oct;586 7830:594-9. Epub 2020/10/01 as doi:  
377 10.1038/s41586-020-2814-7.
- 378 4. Mulligan MJ, Lyke KE, Kitchin N, Absalon J, Gurtman A, Lockhart S, Neuzil K, et  
379 al. Phase I/II study of COVID-19 RNA vaccine BNT162b1 in adults. *Nature* 2020  
380 Oct;586 7830:589-93. Epub 2020/08/14 as doi: 10.1038/s41586-020-2639-4.
- 381 5. Ewer KJ, Barrett JR, Belij-Rammerstorfer S, Sharpe H, Makinson R, Morter R,  
382 Flaxman A, et al. T cell and antibody responses induced by a single dose of

- 383 ChAdOx1 nCoV-19 (AZD1222) vaccine in a phase 1/2 clinical trial. Nat Med 2021  
384 Feb;27 2:270-8. Epub 2020/12/19 as doi: 10.1038/s41591-020-01194-5.
- 385 6. Yang J, Wang W, Chen Z, Lu S, Yang F, Bi Z, Bao L, et al. A vaccine targeting the  
386 RBD of the S protein of SARS-CoV-2 induces protective immunity. Nature 2020  
387 Oct;586 7830:572-7. Epub 2020/07/30 as doi: 10.1038/s41586-020-2599-8.
- 388 7. Walsh EE, Frenck RW, Jr., Falsey AR, Kitchin N, Absalon J, Gurtman A, Lockhart  
389 S, et al. Safety and Immunogenicity of Two RNA-Based Covid-19 Vaccine  
390 Candidates. N Engl J Med 2020 Dec 17;383 25:2439-50. Epub 2020/10/15 as doi:  
391 10.1056/NEJMoa2027906.
- 392 8. Polack FP, Thomas SJ, Kitchin N, Absalon J, Gurtman A, Lockhart S, Perez JL, et  
393 al. Safety and Efficacy of the BNT162b2 mRNA Covid-19 Vaccine. N Engl J Med  
394 2020 Dec 31;383 27:2603-15. Epub 2020/12/11 as doi:  
395 10.1056/NEJMoa2034577.
- 396 9. Pellini R, Venuti A, Pimpinelli F, Abril E, Blandino G, Campo F, Conti L, et al. Initial  
397 observations on age, gender, BMI and hypertension in antibody responses to  
398 SARS-CoV-2 BNT162b2 vaccine. EClinicalMedicine 2021 Jun;36:100928. Epub  
399 2021/06/11 as doi: 10.1016/j.eclinm.2021.100928.
- 400 10. Padoan A, Dall'Olmo L, Rocca FD, Barbaro F, Cosma C, Basso D, Cattelan A, et

- 401 al. Antibody response to first and second dose of BNT162b2 in a cohort of  
402 characterized healthcare workers. Clin Chim Acta 2021 Aug;519:60-3. Epub  
403 2021/04/16 as doi: 10.1016/j.cca.2021.04.006.
- 404 11. Herishanu Y, Avivi I, Aharon A, Shefer G, Levi S, Bronstein Y, Morales M, et al.  
405 Efficacy of the BNT162b2 mRNA COVID-19 vaccine in patients with chronic  
406 lymphocytic leukemia. Blood 2021 Jun 10;137 23:3165-73. Epub 2021/04/17 as  
407 doi: 10.1182/blood.2021011568.
- 408 12. Muller L, Andree M, Moskorz W, Drexler I, Walotka L, Grothmann R, Ptok J, et al.  
409 Age-dependent immune response to the Biontech/Pfizer BNT162b2 COVID-19  
410 vaccination. Clin Infect Dis 2021 Apr 27. Epub 2021/04/28 as doi:  
411 10.1093/cid/ciab381.
- 412 13. Salvagno GL, Henry BM, Pighi L, De Nitto S, Gianfilippi GL, Lippi G. Monitoring of  
413 the immunogenic response to Pfizer BNT162b2 mRNA COVID-19 vaccination in  
414 healthcare workers with Snibe SARS-CoV-2 S-RBD IgG chemiluminescent  
415 immunoassay. Clin Chem Lab Med 2021 Jun 23. Epub 2021/06/24 as doi:  
416 10.1515/cclm-2021-0687.
- 417 14. Lustig Y, Sapir E, Regev-Yochay G, Cohen C, Fluss R, Olmer L, Indenbaum V, et  
418 al. BNT162b2 COVID-19 vaccine and correlates of humoral immune responses

- 419 and dynamics: a prospective, single-centre, longitudinal cohort study in  
420 health-care workers. *Lancet Respir Med* 2021 Jul 2. Epub 2021/07/06 as doi:  
421 10.1016/S2213-2600(21)00220-4.
- 422 15. Fujigaki H, Takemura M, Osawa M, Sakurai A, Nakamoto K, Seto K, Fujita T, et al.  
423 Reliability of serological tests for COVID-19: comparison of three  
424 immunochromatography test kits for SARS-CoV-2 antibodies. *Heliyon* 2020 Sep;6  
425 9:e04929. Epub 2020/09/29 as doi: 10.1016/j.heliyon.2020.e04929.
- 426 16. Fujigaki H, Inaba M, Osawa M, Moriyama S, Takahashi Y, Suzuki T, Yamase K, et  
427 al. Comparative Analysis of Antigen-Specific Anti-SARS-CoV-2 Antibody Isotypes  
428 in COVID-19 Patients. *J Immunol* 2021 May 15;206 10:2393-401. Epub  
429 2021/05/05 as doi: 10.4049/jimmunol.2001369.
- 430 17. Matsuyama S, Nao N, Shirato K, Kawase M, Saito S, Takayama I, Nagata N, et al.  
431 Enhanced isolation of SARS-CoV-2 by TMPRSS2-expressing cells. *Proc Natl*  
432 *Acad Sci U S A* 2020 Mar 31;117 13:7001-3. Epub 2020/03/14 as doi:  
433 10.1073/pnas.2002589117.
- 434 18. Ozeki Y, Tanimura Y, Nagai S, Nomura T, Kinoshita M, Shibuta K, Matsuda N, et al.  
435 Development of a New Chemiluminescent Enzyme Immunoassay Using a  
436 Two-Step Sandwich Method for Measuring Aldosterone Concentrations.

437           Diagnostics (Basel) 2021 Mar 4;11 3. Epub 2021/04/04 as doi:  
438           10.3390/diagnostics11030433.

439 19. Dan JM, Mateus J, Kato Y, Hastie KM, Yu ED, Faliti CE, Grifoni A, et al.  
440           Immunological memory to SARS-CoV-2 assessed for up to 8 months after  
441           infection. Science 2021 Feb 5;371 6529. Epub 2021/01/08 as doi:  
442           10.1126/science.abf4063.

443 20. Chao YX, Rotzschke O, Tan EK. The role of IgA in COVID-19. Brain Behav  
444           Immun 2020 Jul;87:182-3. Epub 2020/05/27 as doi: 10.1016/j.bbi.2020.05.057.

445 21. Takahashi T, Ellingson MK, Wong P, Israelow B, Lucas C, Klein J, Silva J, et al.  
446           Sex differences in immune responses that underlie COVID-19 disease outcomes.  
447           Nature 2020 Dec;588 7837:315-20. Epub 2020/08/28 as doi:  
448           10.1038/s41586-020-2700-3.

449 22. Conti P, Younes A. Coronavirus COV-19/SARS-CoV-2 affects women less than  
450           men: clinical response to viral infection. J Biol Regul Homeost Agents 2020  
451           March-April;34 2:339-43. Epub 2020/04/08 as doi: 10.23812/Editorial-Conti-3.

452

453

454

455 **Table 1. Characteristics of subjects in this cohort.**

		Number	Age	
Total subjects		219	45.6 ± 11.0	
Gender	Male	69	47.2 ± 12.3	
	Female	150	44.8 ± 10.3	
Age	Male	20-39yr	18	31.6 ± 6.3
		40-49yr	18	43.5 ± 3.2
		50-59yr	20	53.8 ± 3.0
		> 60yr	13	63.8 ± 4.3
	Female	20-39yr	43	31.6 ± 5.6
		40-49yr	55	45.1 ± 2.7
		50-59yr	43	54.2 ± 2.6
		> 60yr	9	61.3 ± 1.7
Hypertension	Male	12	59.1 ± 5.0	
	Female	6	52.2 ± 5.3	
Allergies	Male	26	43.1 ± 13.7	
	Female	75	43.0 ± 11.1	

456

457



458 **Figure Captions**

459

460 **Figure 1. Antibody responses of IgG (A), IgM (B), and IgA (C) in all the subjects**  
461 **induced by BNT162b2 vaccination and differences of IgG (D), IgM (E), and IgA (F)**  
462 **levels between males and females after the second vaccination**

463 Serum samples were collected before vaccination, after the first vaccination, and after  
464 the second vaccination (A-C). Antibody levels after the second vaccination were  
465 compared between males and females (D-F). The horizontal solid lines indicate the  
466 mean of antibody levels. Statistical analysis was done by a two-tailed Mann–Whitney  
467 test (\* $p < 0.05$ , \*\* $p < 0.01$ , ns: not significant).

468

469 **Figure 2. Correlation between age and IgG (A), IgM (B), and IgA (C) levels of males**  
470 **(upper panel) and females (lower panel) after second vaccination**

471 Correlation analysis was calculated using a Spearman's correlation coefficient. The  
472 values of Spearman's  $r$  and  $p$  are presented in each figure.

473

474 **Figure 3. Levels of RBD-IgG of subjects who have hypertension (A) and allergy (B)**

475 (A) Subjects diagnosed with hypertension with or without antihypertensive medications  
476 (12 males and 6 females) were selected as hypertension group and compared to  
477 age-matched control group (11 males and 16 females). (B) Subjects who have allergies  
478 (26 males and 75 females) were selected as allergy group and compared to  
479 age-matched control group (21 males and 52 females). The horizontal solid lines  
480 indicate the mean of antibody levels. Statistical analysis was done by a two-tailed

481 Mann–Whitney test (\*p < 0.05, ns: not significant).

482

483 **Figure 4. Correlation between virus neutralizing activity and IgG (A), IgM (B), and**  
484 **IgA (C) levels after second vaccination**

485 Antibody measurement by ELISA and neutralization assays were performed using sera  
486 from 30 subjects after the second vaccination. The index of the highest sera dilution  
487 factor with cytopathic effect inhibition was defined as the microneutralization test titer  
488 (MNT). Correlation was calculated using Spearman's correlation coefficient. The values  
489 of Spearman's r and p are presented in each figure.

490

491 **Figure 5. (A) Relationship between RBD-IgG levels measured by ELISA and that of**  
492 **the CLEIA assay. (B) Correlation between virus neutralizing activity and RBD-IgG**  
493 **obtained by Accuraseed.**

494 (A) RBD-IgG levels in serum samples from all subjects (total 657 samples) were  
495 measured by both ELISA and Accuraseed. Correlation R were calculated by Pearson's  
496 correlation. (B) Antibody measurement by Accuraseed and neutralization assays were  
497 performed using sera from 30 subjects after the second vaccination. The index of the  
498 highest sera dilution factor with cytopathic effect inhibition was defined as the  
499 microneutralization test titer (MNT). Correlation was calculated using Spearman's  
500 correlation coefficient. The values of Spearman's r and p are presented.

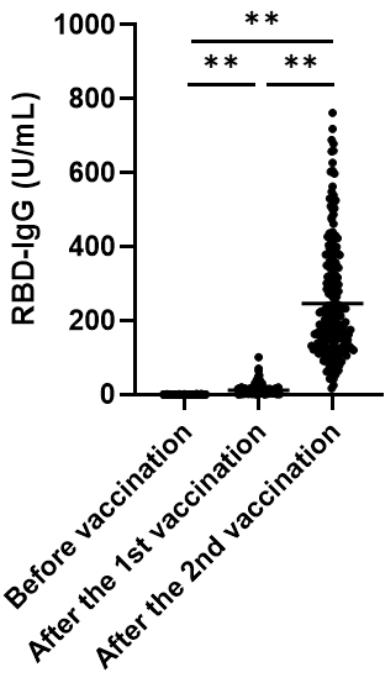
501

502

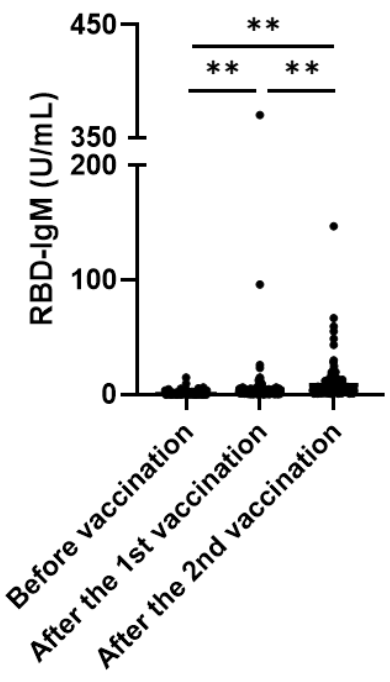
503

Figure 1.

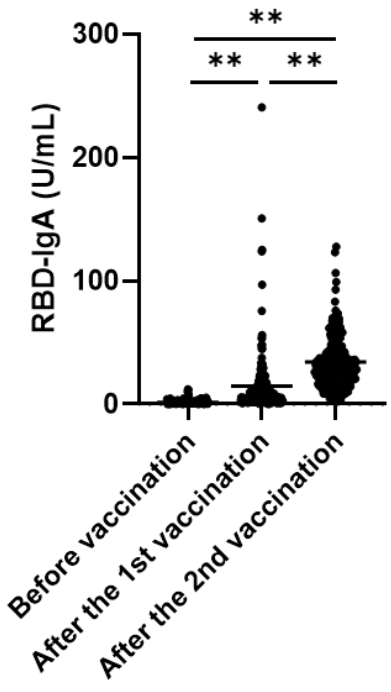
A. IgG



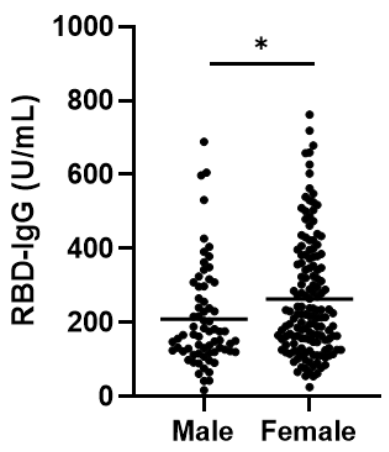
B. IgM



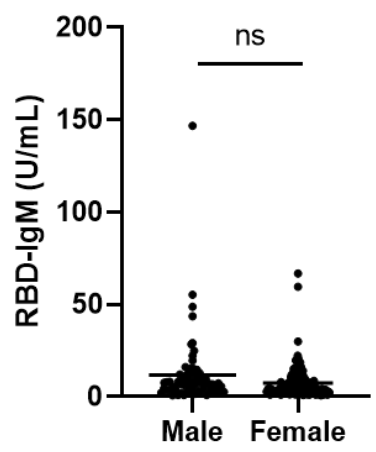
C. IgA



D. IgG



E. IgM



F. IgA

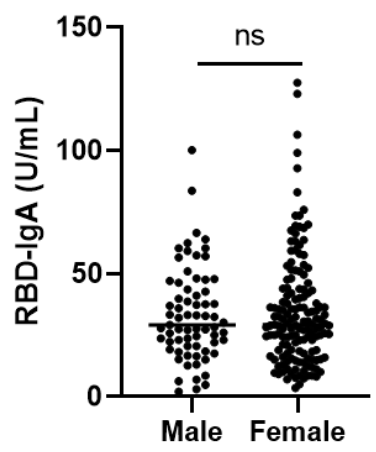
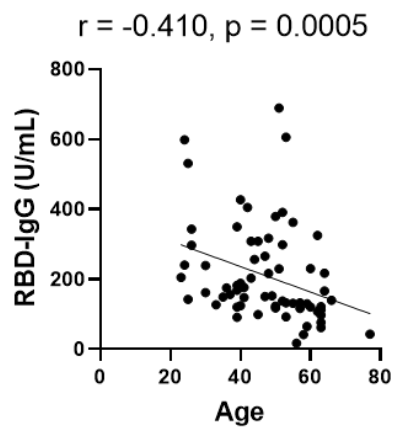
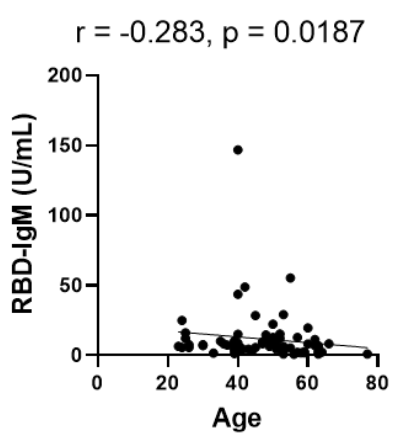


Figure 2.

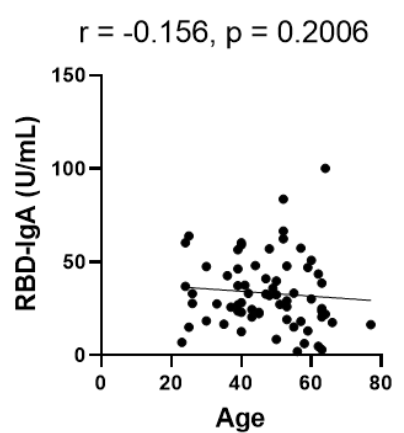
A. IgG



B. IgM



C. IgA



Female

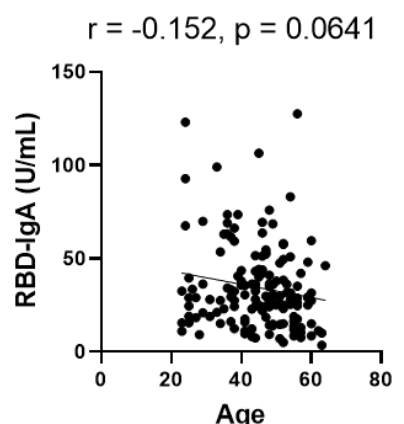
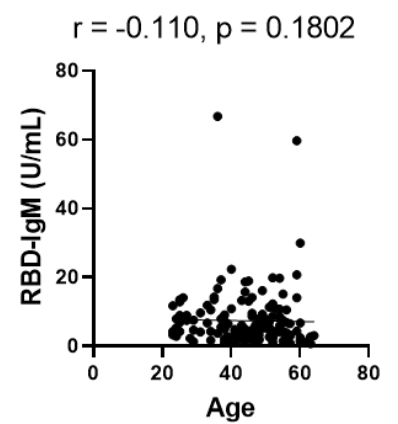
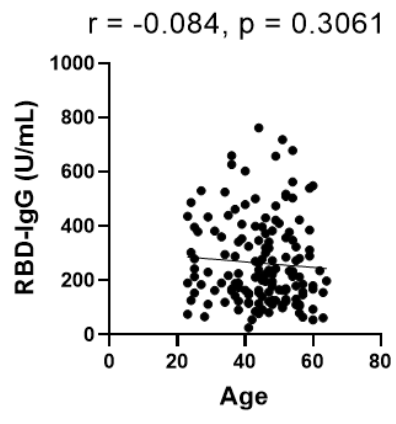


Figure 3.

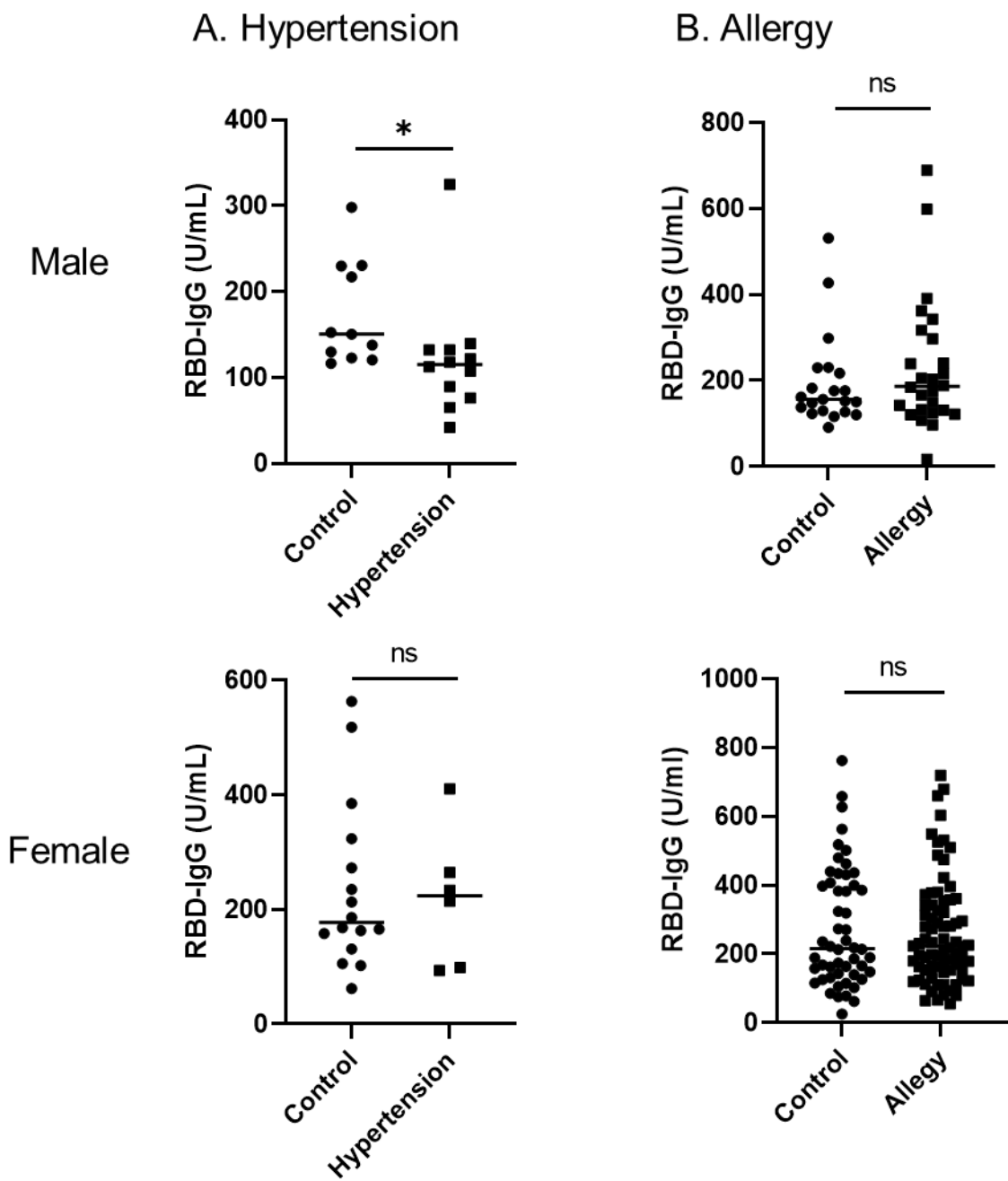
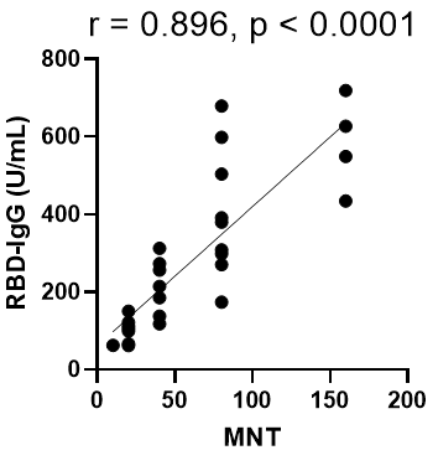
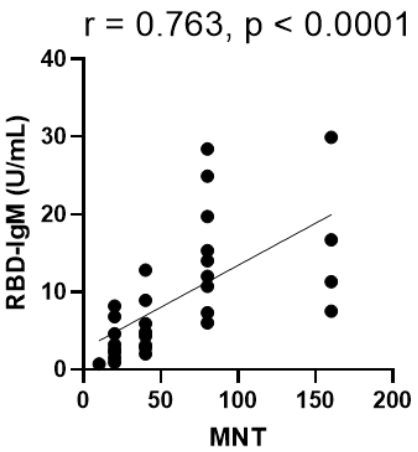


Figure 4.

A. IgG



B. IgM



C. IgA

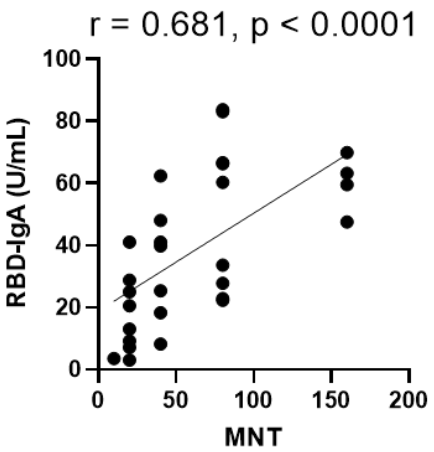
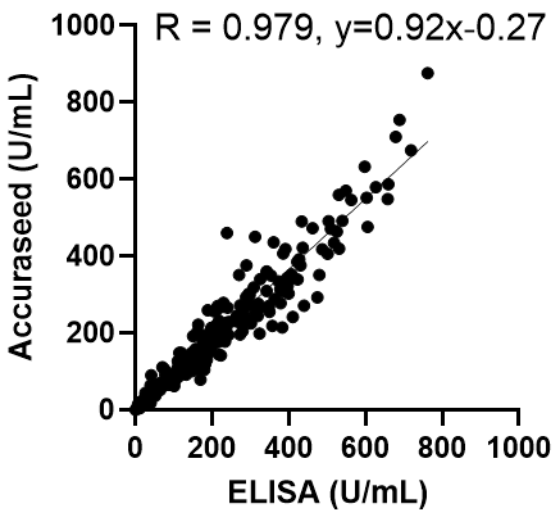


Figure 5.

A



B

