

# Supporting Information for “The required size of cluster randomized trials of non-pharmaceutical interventions in epidemic settings”

Justin K. Sheen<sup>1</sup>, Johannes Haushofer<sup>2,3,4,5</sup>, C. Jessica E. Metcalf<sup>1,6</sup>, and Lee Kennedy-Shaffer<sup>7\*</sup>

<sup>1</sup>Department of Ecology and Evolutionary Biology, Princeton University, Princeton, NJ, USA

<sup>2</sup>Department of Economics, Stockholm University, Stockholm, Sweden

<sup>3</sup>Research Institute of Industrial Economics, Stockholm, Sweden

<sup>4</sup>Max Planck Institute for Collective Goods, Bonn, Germany

<sup>5</sup>Jain Family Institute, New York, USA

<sup>6</sup>School of Public and International Affairs, Princeton University, Princeton, NJ, USA

<sup>7</sup>Department of Mathematics and Statistics, Vassar College, Poughkeepsie, NY, USA

\*Correspondence: Lee Kennedy-Shaffer, lkennedyshaffer@vassar.edu

July 2021

# Appendix 1. Approximate Variance Derivations

## A. Approximation Under Full Testing

Suppose there are  $N_1$  intervention and  $N_0$  control clusters. For simplicity, we assume that each cluster has  $n$  individuals. At time  $t$  (immediately before the intervention occurs) and  $t + 1$  (one generation interval after beginning the intervention), we sample  $m_1$  individuals from each cluster and record whether they test positive. Denote the number of individuals who test positive in cluster  $j$  at times  $t$  and  $t + 1$  by  $Y_{j,t}$  and  $Y_{j,t+1}$ , respectively. Let  $I_t$  and  $I_{t+1}$  be random variables representing the proportion of individuals infected at times  $t$  and  $t + 1$ , respectively, in a randomly-chosen cluster.

Assume that each cluster has time-varying effective reproductive number  $R_t^i$  at time  $t$  (looking forward) and overdispersion parameter  $k^i$ , where  $i = 0$  for clusters in the control arm and  $i = 1$  for clusters in the intervention arm. Then  $I_{t+1}$  and  $I_t$  are related by:

$$I_{j,t+1}|I_{j,t} = \frac{1}{n} \sum_{\ell=1}^{nI_{j,t}} Q_{j,\ell}, \text{ where}$$

$$Q_{j,\ell} \sim \text{NegBin}(R_t^i, k^i) \forall \ell.$$

First, assume that we test the full population within each cluster at both time  $t$  and  $t + 1$ , so that  $m_1 = n$ . Then  $Y_{j,t+1} = nI_{j,t+1}$  and  $Y_{j,t} = nI_{j,t}$ . For each cluster  $j$  we can then calculate the expectation and approximate the variance of the statistic  $\frac{Y_{j,t+1}}{Y_{j,t}}$ . For any cluster  $j$  in arm  $i$ :

$$E[I_{j,t+1}|I_{j,t}] = I_t R_t^i.$$

$$\text{Var}(I_{j,t+1}|I_{j,t}) = \frac{I_t}{n} R_t^i \left( 1 + \frac{R_t^i}{k^i} \right).$$

$$E[Y_{j,t+1}|Y_{j,t}] = nE \left[ I_{j,t+1}|I_{j,t} = \frac{Y_{j,t}}{n} \right]$$

$$= n \frac{Y_{j,t}}{n} R_t^i = Y_{j,t} R_t^i.$$

$$\text{Var}(Y_{j,t+1}|Y_{j,t}) = n^2 \text{Var} \left( I_{j,t+1}|I_{j,t} = \frac{Y_{j,t}}{n} \right)$$

$$= n^2 \frac{Y_{j,t}}{n^2} R_t^i \left( 1 + \frac{R_t^i}{k^i} \right)$$

$$= Y_{j,t} R_t^i \left( 1 + \frac{R_t^i}{k^i} \right).$$

Now, turning to the test statistic:

$$\begin{aligned}
E \left[ \frac{Y_{j,t+1}}{Y_{j,t}} \right] &= E \left[ E \left[ \frac{Y_{j,t+1}}{Y_{j,t}} \middle| Y_{j,t} \right] \right] \\
&= E \left[ \frac{Y_{j,t} R_t^i}{Y_{j,t}} \right] = E[R_t^i]. \\
\text{Var} \left( \frac{Y_{j,t+1}}{Y_{j,t}} \right) &= E \left[ \text{Var} \left( \frac{Y_{j,t+1}}{Y_{j,t}} \middle| Y_{j,t} \right) \right] + \text{Var} \left( E \left[ \frac{Y_{j,t+1}}{Y_{j,t}} \middle| Y_{j,t} \right] \right) \\
&= E \left[ \frac{R_t^i (1 + R_t^i / k^i)}{Y_{j,t}} \right] + \text{Var}(R_t^i) \\
&= R_t^i \left( 1 + \frac{R_t^i}{k^i} \right) E \left[ \frac{1}{Y_{j,t}} \right],
\end{aligned}$$

under the assumption that  $R_t^i$  and  $k^i$  are equal across clusters within arm  $i$  (but may vary across arms). Now, using a Taylor series for  $\frac{1}{Y_{j,t}}$  around  $\frac{1}{E[Y_{j,t}]}$ , we can approximate  $E \left[ \frac{1}{Y_{j,t}} \right]$  by:

$$\begin{aligned}
E \left[ \frac{1}{Y_{j,t}} \right] &= E \left[ \frac{1}{E[Y_{j,t}]} - \frac{Y_{j,t} - E[Y_{j,t}]}{E[Y_{j,t}]^2} + \frac{(Y_{j,t} - E[Y_{j,t}])^2}{E[Y_{j,t}]^3} - \dots \right] \\
&= \frac{1}{E[Y_{j,t}]} - 0 + \frac{\text{Var}(Y_{j,t})}{E[Y_{j,t}]^3} - \dots
\end{aligned}$$

And thus we can bound the expectation  $E \left[ \frac{1}{Y_{j,t}} \right]$  by:

$$\frac{1}{E[Y_{j,t}]} \leq E \left[ \frac{1}{Y_{j,t}} \right] \leq \frac{1}{E[Y_{j,t}]} + \frac{\text{Var}(Y_{j,t})}{E[Y_{j,t}]^3}.$$

So we can bound the variance in each cluster  $j$  in arm  $i$  by:

$$\begin{aligned}
R_t^i \left( 1 + \frac{R_t^i}{k^i} \right) \frac{1}{E[Y_{j,t}]} &\leq \text{Var} \left( \frac{Y_{j,t+1}}{Y_{j,t}} \right) \\
&\leq R_t^i \left( 1 + \frac{R_t^i}{k^i} \right) \left( \frac{1}{E[Y_{j,t}]} + \frac{\text{Var}(Y_{j,t})}{E[Y_{j,t}]^3} \right). \tag{1}
\end{aligned}$$

Equivalently, using  $I_{j,t}$  and  $I_{j,t+1}$ :

$$\begin{aligned}
R_t^i \left( 1 + \frac{R_t^i}{k^i} \right) \frac{1}{nE[I_{j,t}]} &\leq \text{Var} \left( \frac{Y_{j,t+1}}{Y_{j,t}} \right) \\
&\leq R_t^i \left( 1 + \frac{R_t^i}{k^i} \right) \left( \frac{1}{nE[I_{j,t}]} + \frac{\text{Var}(I_{j,t})}{nE[I_{j,t}]^3} \right). \tag{2}
\end{aligned}$$

## B. Approximate Variance Accounting for Sampling

Here we use the same notation and epidemic spread assumptions as the previous section, but we now take  $m_1$  to be small relative to  $n$  (i.e., we have random sampling and ignore any finite population correction).

For any cluster  $j$  in intervention arm  $i$ , we can find the mean and variance of  $Y_{j,t+1}$ :

$$\begin{aligned}
Y_{j,t+1}|I_{j,t+1} &\sim \text{Bin}(m, I_{j,t+1}). \\
E[Y_{j,t+1}|I_{j,t}] &= E[E[Y_{j,t+1}|I_{j,t}, I_{j,t+1}]|I_{j,t}] \\
&= E[m_1 I_{j,t+1}|I_{j,t}] = m_1 E\left[\frac{1}{n} \sum_{\ell=1}^{nI_{j,t}} Q_{j,\ell}|I_{j,t}\right] \\
&= m_1 \frac{1}{n} (nI_{j,t}) R_t^i = m_1 I_{j,t} R_t^i.
\end{aligned}$$

$$\begin{aligned}
\text{Var}(Y_{j,t+1}|I_{j,t}) &= E[\text{Var}(Y_{j,t+1}|I_{j,t+1})|I_{j,t}] + \text{Var}(E[Y_{j,t+1}|I_{j,t+1}]|I_{j,t}) \\
&= E[m_1 I_{j,t+1}(1 - I_{j,t+1})|I_{j,t}] + \text{Var}(m_1 I_{j,t+1}|I_{j,t}) \\
&= m_1 (E[I_{j,t+1}|I_{j,t}] - E[I_{j,t+1}^2|I_{j,t}]) + m_1^2 \text{Var}(I_{j,t+1}|I_{j,t}) \\
&= m_1 (E[I_{j,t+1}|I_{j,t}] - \text{Var}(I_{j,t+1}|I_{j,t}) - E[I_{j,t+1}|I_{j,t}]^2) + m_1^2 \text{Var}(I_{j,t+1}|I_{j,t}) \\
&= m_1 E[I_{j,t+1}|I_{j,t}](1 - E[I_{j,t+1}|I_{j,t}]) + m_1(m_1 - 1) \text{Var}(I_{j,t+1}|I_{j,t}) \\
&= m_1 I_{j,t} R_t^i (1 - I_{j,t} R_t^i) + m_1(m_1 - 1) \frac{I_{j,t}}{n} R_t^i (1 + R_t^i/k^i).
\end{aligned}$$

$$\begin{aligned}
E[Y_{j,t+1}] &= m_1 R_t^i E[I_{j,t}]. \\
\text{Var}(Y_{j,t+1}) &= \text{Var}(E[Y_{j,t+1}|I_{j,t}]) + E[\text{Var}(Y_{j,t+1}|I_{j,t})] \\
&= m_1^2 (R_t^i)^2 \text{Var}(I_{j,t}) + m_1 R_t^i E[I_{j,t}(1 - I_{j,t} R_t^i)] + \frac{m_1(m_1 - 1) R_t^i (1 + R_t^i/k^i)}{n} E[I_{j,t}] \\
&= m_1 R_t^i \left[ (m_1 - 1) R_t^i \text{Var}(I_{j,t}) - R_t^i E[I_{j,t}]^2 + E[I_{j,t}] \left( 1 + \frac{m_1 - 1}{n} \left[ 1 + \frac{R_t^i}{k^i} \right] \right) \right].
\end{aligned}$$

Suppose that we sampled everyone in the cluster at time  $t$ . Then we could use the statistic  $\frac{Y_{j,t+1}/m_1}{I_{j,t}}$  to estimate  $R_t^i$  in cluster  $j$  in arm  $i$ .

$$\begin{aligned}
E\left[\frac{Y_{j,t+1}}{m_1 I_{j,t}}\right] &= E\left[\frac{E[Y_{j,t+1}|I_{j,t}]}{m_1 I_{j,t}}\right] = E[R_t^i] = R_t^i. \\
\text{Var}\left(\frac{Y_{j,t+1}}{m_1 I_{j,t}}\right) &= E\left[\frac{\text{Var}(Y_{j,t+1}|I_{j,t})}{m_1^2 I_{j,t}^2}\right] + \text{Var}\left(\frac{E[Y_{j,t+1}|I_{j,t}]}{m_1 I_{j,t}}\right) \\
&= E\left[\frac{R_t^i(1 - I_{j,t} R_t^i)}{m_1 I_{j,t}} + \frac{m_1 - 1}{m_1} \frac{1}{n I_{j,t}} R_t^i (1 + R_t^i/k^i)\right] + \text{Var}(R_t^i) \\
&= \frac{R_t^i}{m_1} E\left[\frac{1}{I_{j,t}}\right] - \frac{(R_t^i)^2}{m_1} + \frac{m_1 - 1}{m_1} \frac{R_t^i (1 + R_t^i/k^i)}{n} E\left[\frac{1}{I_{j,t}}\right].
\end{aligned}$$

Similar to the previous section, by a Taylor series, we can bound  $E\left[\frac{1}{I_{j,t}}\right]$ :

$$\frac{1}{E[I_{j,t}]} \leq E\left[\frac{1}{I_{j,t}}\right] \leq \frac{1}{E[I_{j,t}]} + \frac{\text{Var}(I_{j,t})}{E[I_{j,t}]^3}.$$

So we can bound the variance for any cluster  $j$  in intervention arm  $i$  by:

$$\begin{aligned}
& \frac{R_t^i}{m_1} \left\{ \left[ 1 + \frac{m_1 - 1}{n} \left( 1 + \frac{R_t^i}{k^i} \right) \right] \left[ \frac{1}{E[I_{j,t}]} \right] - R_t^i \right\} \\
& \leq \text{Var} \left( \frac{Y_{j,t+1}}{m_1 I_{j,t}} \right) \\
& \leq \frac{R_t^i}{m_1} \left\{ \left[ 1 + \frac{m_1 - 1}{n} \left( 1 + \frac{R_t^i}{k^i} \right) \right] \left[ \frac{1}{E[I_{j,t}]} + \frac{\text{Var}(I_{j,t})}{E[I_{j,t}]^3} \right] - R_t^i \right\}. \tag{3}
\end{aligned}$$

In fact, we will sample  $m_0$  people in each cluster at time  $t$  and can denote the number of individuals who test positive at time  $t$  in cluster  $j$  by  $Y_{j,t}$ . Again assuming  $m_0$  is small relative to  $n$ ,  $Y_{j,t} \sim \text{Bin}(m_0, I_{j,t})$  and so  $Y_{j,t}/m_0$  estimates  $I_{j,t}$ .

Conditional on  $I_t$ ,  $Y_{j,t}$  has expectation  $m_1 I_{j,t}$  and variance  $m_1 I_{j,t}(1 - I_{j,t})$ . So the estimator  $\frac{Y_{j,t+1}/m_1}{Y_{j,t}/m_0}$  approximately has expectation  $R_t^i$  and has variance greater than that given above.

## Appendix 2. Simulation Algorithms

---

**Algorithm 1:** Create Simulations For a Combination of Parameters

---

**Result:** List of simulations with and without intervention,  $L_1, L_0$   
Input  $n, E[I_t], R_0, \Delta, k, I_0$   
Initialize  $L_\beta, L_d, L_0, L_1, P \leftarrow list()$   
**Solve for transmission rate,  $\beta$ :**  
**for** 1 to 500 **do**  
    Create graph,  $G$ , overdispersed by  $k$ , size  $n$   
    Initialize transmission rate,  $b \leftarrow 0.04$   
    **while**  $R_0$  of  $G$  with  $b \geq R_0$  **do**  
         $b \leftarrow b - 0.0001$   
    Add  $b$  to  $L_\beta$   
 $\beta \leftarrow \text{median}(L_\beta)$   
**Solve for day of intervention,  $t$ :**  
**for** 1 to 1000 **do**  
    Create graph,  $G$ , overdispersed by  $k$ , size  $n$   
    Run simulation,  $s$ , for 200 days, transmission  $\beta$ , initial prevalence  $I_0$   
     $I(d) \leftarrow$  prevalence of infectious persons,  $I$ , for each day,  $d$ , of  $s$   
    Add  $I(d)$  to  $L_d$   
 $t \leftarrow \min d \{ \langle I(d) \text{ in } L_d | I(d) \neq 0 \rangle \geq E[I_t] \text{ and } |I(d) \text{ in } L_d| \geq 100 \}$   
**Create 3000 simulations:**  
**for** 1 to 3000 **do**  
    Create graph,  $G$  overdispersed by  $k$ , size  $n$   
    Run simulation until  $t$ , transmission  $\beta$ , initial prevalence  $I_0$   
    Run simulation for one generation with transmission rate,  $\beta$ , and with  
        transmission rate,  $(1-\Delta) \times \beta$   
    Add simulation with transmission rate,  $\beta$ , and with transmission rate,  $(1-\Delta) \times \beta$   
        to  $L_0, L_1$ , respectively  
**return**  $L_0, L_1$

---

---

**Algorithm 2:** Find Sufficient Number of Clusters Per Arm,  $C_S$ , for Two-Sample Welch's t-test, One Generation after Intervention

---

**Result:**  $C_S$  when  $\alpha = 5\%$ , power  $\approx 80\%$

Input  $L_0, L_1, m$

Initialize  $P \leftarrow list()$

Initialize  $C_{min} \leftarrow 1, C_{max} \leftarrow 1000$

**Binary Search**( $L_1, L_0, C_{min}, C_{max}, m$ ):

$C \leftarrow \text{ceiling}(\frac{C_{min} + C_{max}}{2})$

**for** 1 to 10000 **do**

    Randomly choose  $C$  clusters from  $L_0$  and  $C$  clusters from  $L_1$

    Sample  $m$  from each cluster at time of intervention,  $t$

$Y_t \leftarrow$  number of sampled infectious individuals at  $t$

    Sample  $m$  from each cluster one generation after intervention

$Y_{t+1} \leftarrow$  number of sampled infectious individuals at  $t + 1$

    Add p-value of two-sample Welch's t-test of  $\log((Y_{t+1} + 1)/(Y_t + 1))$  to  $P$

Calculate power of  $C$ ,  $C_p \leftarrow$  proportion of  $P$  with p-value  $\leq 0.05$

**if**  $C_{max} - C_{min} = 1$  or  $C_p$  within 0.5% of 80% **then**

**return**  $C$

**else**

**if**  $C_p < 80\%$  **then**

$C_{max} \leftarrow C$

**else**

$C_{min} \leftarrow C$

**Binary Search**( $L_1, L_0, C_{min}, C_{max}, m$ )

---

Note: The binary search of Algorithm 2 is terminated if the power at first iteration (which tests 501 clusters per arm) is less than 40% or if the power at second iteration (which tests 751 clusters per arm) is less than 60%. We assume that if either of these conditions are true, Algorithm 2 will not be able to solve for a sufficient number of clusters,  $C_S, \leq 1000$ .

## Stability of Simulation Algorithm

Solving for the required sample size first requires that we create a stable set of 3000 simulations for each parameter combination, which is done with Algorithm 1. Algorithm 1 is made up of three parts: (1) solve for the transmission rate, (2) solve for the day of intervention, and (3) create 3000 simulations using the solved for transmission rate and day of intervention. To check the stability of (1) we plot the distribution of absolute differences in  $\beta$  across two reruns in Figure S1A and find that the average absolute difference across all parameter combinations is  $9.7 \times 10^{-5}$  (less than one step of the algorithm,  $1 \times 10^{-4}$ ). To check the stability of (2) we plot the distribution of absolute differences in  $t$  across two reruns in Figure S1B and find that the average absolute difference across all parameter combinations is 1.41 days. We have assumed that the 3000 simulations of (3) capture the majority of the possibilities that a single recruited cluster could experience. More specifically, these 3000 simulations are assumed to account for variance in creation of the cluster’s contact network, as well as variance in the transmission of the epidemic through a given cluster’s contact network.

Algorithm 2, will return the first number of clusters it encounters within 0.5% of 80% (i.e. a window of 0.5%), or will return the result when the difference between the minimum and maximum clusters bounds of the recursive call is 1. For a given tested sample size, the power is assumed to have very small variance. This may lead to a suboptimal sample size if (1) the window of 0.5% is too wide, leading the algorithm to return the first cluster size it encounters within this window when there is a smaller cluster size that also satisfies this window, or (2) if the window of 0.5% is too narrow compared to the variance in the power for a given sample size (i.e. the variance is not small), allowing for the possibility for Algorithm 2 to miss the optimal sample size stochastically. (2) will potentially lead to a solved for number of clusters that is outside of the 0.5% window. We assume the window of 0.5% is narrow enough to be stable against (1). We plot the distribution of power values for parameter sets (two-sample Welch’s t-test, one generation after sampling; one-sample t-test on differences when matching on susceptible individuals; one-sample t-test on differences when matching on non-infectious individuals) with solved number of clusters from Algorithm 2 in Figure S1C and find 106/110 parameter sets are within the 0.5% window of 80% power. Furthermore, for those 4 parameter sets outside the 0.5% window, the maximum difference from 80% is 1.1%. Both points show stability against (2).



### Appendix 3. Supplementary Tables and Figures

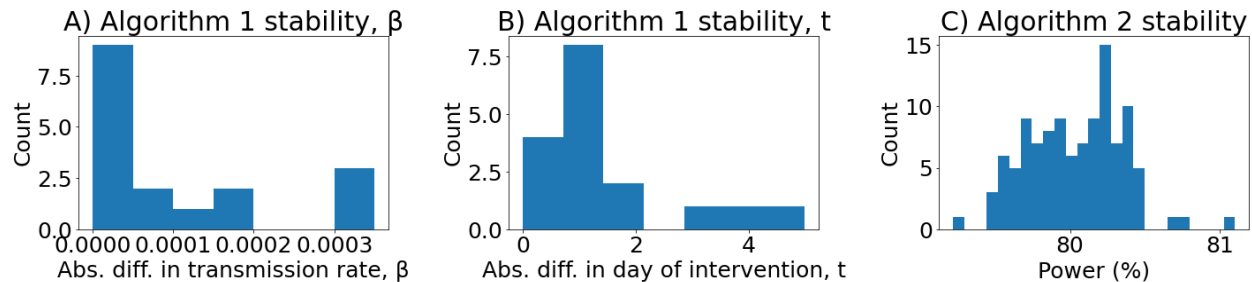


Figure S1: **Distributions from stability analysis of algorithms 1 and 2.** (A) Distribution of absolute differences in transmission rates between two runs of Algorithm 1 for all parameter combinations. (B) Distribution of absolute differences in days of intervention between two runs of Algorithm 1 for all parameter combinations. (C) Distribution of powers for parameter sets with solved number of clusters from Algorithm 2.

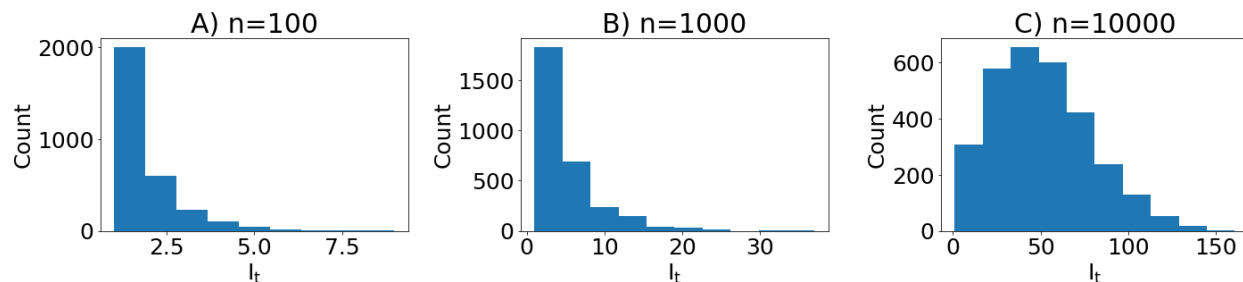


Figure S2: **The distribution of the number of infectious individuals per cluster at time of intervention has large variance.** (A)  $n = 100$ . (B)  $n = 1000$ . (C)  $n = 10000$ . 3000 simulations.  $R_0 = 1.5$ ,  $k = 0.7$ , targeted  $E[I_t] = 2\%$  for  $n = 100$  and  $E[I_t] = 0.5\%$  for  $n = 1000, 10000$ . This variance is accounted for in the simulations but not in the approximations.

$R_0$	$k$	$\Delta$	$t$	$E[R_t^0]$	$Var[R_t^0]$	$E[R_t^1]$	$Var[R_t^1]$	$E[I_t]$	$Var[I_t]$	$E[I_{t+1}^0]$	$Var[I_{t+1}^0]$	$E[I_{t+1}^1]$	$Var[I_{t+1}^1]$	$m$	$C_S$
1.5	0.7	0.2	11	1.13	1.87	0.91	1.32	0.018	1.51E-04	0.02	4.98E-04	0.016	3.80E-04	10	$\geq 1000$
														50	845
														100	408
		0.4	9	1.06	1.74	0.72	1.04	0.016	9.58E-05	0.017	4.08E-04	0.011	2.47E-04	10	$\geq 1000$
														50	299
														100	131
0.4	0.2	0.2	9	0.94	1.67	0.78	1.27	0.015	9.28E-05	0.015	3.93E-04	0.012	3.06E-04	10	$\geq 1000$
														50	$\geq 1000$
														100	658
		0.4	10	0.95	1.64	0.65	0.81	0.016	1.20E-04	0.016	4.45E-04	0.011	2.20E-04	10	$\geq 1000$
														50	361
														100	166
0.1	0.2	0.2	8	0.53	1.11	0.45	0.79	0.013	5.04E-05	0.008	2.37E-04	0.007	1.59E-04	10	$\geq 1000$
														50	$\geq 1000$
														100	$\geq 1000$
		0.4	11	0.65	1.16	0.45	0.63	0.015	1.15E-04	0.011	2.82E-04	0.008	1.65E-04	10	$\geq 1000$
														50	611
														100	248
2	0.7	0.2	8	1.51	2.98	1.25	2.3	0.017	1.33E-04	0.026	7.89E-04	0.021	6.22E-04	10	$\geq 1000$
														50	814
														100	426
		0.4	8	1.53	3.02	0.95	1.42	0.017	1.24E-04	0.026	8.16E-04	0.016	3.92E-04	10	549
														50	151
														100	76
0.4	0.2	0.2	7	1.21	2.53	1	1.91	0.015	8.77E-05	0.019	6.10E-04	0.016	4.62E-04	10	$\geq 1000$
														50	$\geq 1000$
														100	564
		0.4	8	1.28	2.57	0.84	1.38	0.016	1.22E-04	0.022	6.62E-04	0.014	3.68E-04	10	876
														50	228
														100	115
0.1	0.2	0.2	8	0.79	1.85	0.7	1.46	0.014	8.79E-05	0.013	4.20E-04	0.011	3.43E-04	10	$\geq 1000$
														50	$\geq 1000$
														100	$\geq 1000$
		0.4	9	0.86	1.81	0.58	0.94	0.015	1.24E-04	0.014	4.38E-04	0.01	2.68E-04	10	$\geq 1000$
														50	449
														100	213

Table S1: **Full Simulation Results for  $n = 100$ , Two-Sample Welch's t-test One Generation After Intervention.**  $R_0$  = target  $R_0$ .  $k$  = overdispersion.  $\Delta$  = % reduction in transmission.  $t$  = day of intervention.  $R_t^0 = R_t$  without treatment.  $R_t^1 = R_t$  with treatment.  $I_t$  = proportion of infectious persons at day of intervention.  $I_{t+1}^0$  = proportion of infectious persons at time of sampling without treatment.  $I_{t+1}^1$  = proportion of infectious persons at time of sampling with treatment.  $m$  = number of persons sampled from each cluster.  $C_S$  = number of clusters needed for each arm from simulations.

$R_0$	$k$	$\Delta$	$t$	$E[R_t^0]$	$Var[R_t^0]$	$E[R_t^1]$	$Var[R_t^1]$	$E[I_t]$	$Var[I_t]$	$E[I_{t+1}^0]$	$Var[I_{t+1}^0]$	$E[I_{t+1}^1]$	$Var[I_{t+1}^1]$	$m$	$C_S$
1.5	0.7	0.2	27	1.5	1.71	1.18	1.1	0.0049	1.91E-05	0.0067	3.89E-05	0.0054	2.77E-05	100	969
		0.4	26	1.47	1.61	0.96	0.84	0.0048	1.87E-05	0.0064	3.81E-05	0.0042	1.83E-05	100	142
														100	295
	0.4	0.2	28	1.32	1.59	1.13	1.14	0.0047	1.78E-05	0.0057	3.02E-05	0.0049	2.33E-05	1000	43
														100	$\geq 1000$
														1000	322
		0.4	28	1.33	1.48	0.91	0.79	0.0047	1.78E-05	0.0057	3.04E-05	0.004	1.54E-05	100	420
														1000	63
	0.1	0.2	36	1.16	1.26	0.97	0.93	0.0043	1.19E-05	0.0043	1.46E-05	0.0036	1.01E-05	100	$\geq 1000$
														1000	283
		0.4	32	1.21	1.41	0.85	0.78	0.0041	1.14E-05	0.0044	1.51E-05	0.0031	8.50E-06	100	611
														1000	68
2	0.7	0.2	16	2.08	3.5	1.65	2.35	0.0046	1.73E-05	0.009	7.55E-05	0.0071	4.94E-05	100	626
														1000	158
	0.4	0.4	18	2.1	3.21	1.29	1.32	0.0054	2.48E-05	0.0102	8.83E-05	0.0065	3.96E-05	100	158
														1000	36
	0.4	0.2	18	1.91	2.97	1.5	2.01	0.0046	1.83E-05	0.0082	6.44E-05	0.0065	4.38E-05	100	658
														1000	146
		0.4	19	1.92	2.92	1.2	1.15	0.0049	2.02E-05	0.0085	6.46E-05	0.0055	2.98E-05	100	197
														1000	42
	0.1	0.2	22	1.55	2.2	1.29	1.63	0.0045	1.49E-05	0.0065	3.27E-05	0.0054	2.43E-05	100	$\geq 1000$
														1000	263
		0.4	21	1.56	2.28	1.01	1.02	0.0042	1.46E-05	0.0061	3.09E-05	0.0041	1.64E-05	100	330
														1000	55

Table S2: **Full Simulation Results for  $n = 1000$ , Two-Sample Welch's t-test One Generation After Intervention.**

$R_0$  = target  $R_0$ .  $k$  = overdispersion.  $\Delta$  = % reduction in transmission.  $t$  = day of intervention.  $R_t^0 = R_t$  without treatment.  $R_t^1 = R_t$  with treatment.  $I_t$  = proportion of infectious persons at day of intervention.  $I_{t+1}^0$  = proportion of infectious persons at time of sampling without treatment.  $I_{t+1}^1$  = proportion of infectious persons at time of sampling with treatment.  $m$  = number of persons sampled from each cluster.  $C_S$  = number of clusters needed for each arm from simulations.

$R_0$	$k$	$\Delta$	$t$	$E[R_t^0]$	$Var[R_t^0]$	$E[R_t^1]$	$Var[R_t^1]$	$E[I_t]$	$Var[I_t]$	$E[I_{t+1}^0]$	$Var[I_{t+1}^0]$	$E[I_{t+1}^1]$	$Var[I_{t+1}^1]$	$m$	$C_s$
1.5	0.7	0.2	49	1.36	0.17	1.13	0.15	0.0049	7.27E-06	0.0063	1.03E-05	0.0053	7.46E-06	100	$\geq 1000$
		0.4	50	1.36	0.14	0.92	0.08	0.005	7.76E-06	0.0065	1.08E-05	0.0044	5.44E-06	100	178
		0.4	73	1.16	0.17	0.98	0.12	0.0052	7.11E-06	0.0056	6.16E-06	0.0047	4.58E-06	1000	41
	0.4	0.2	68	1.21	0.24	0.83	0.1	0.0049	7.06E-06	0.0054	6.71E-06	0.0038	3.72E-06	100	$\geq 1000$
2	0.7	0.2	24	2.09	0.22	1.66	0.13	0.0051	5.62E-06	0.0104	1.99E-05	0.0083	1.31E-05	1000	236
		0.4	24	2.08	0.21	1.28	0.08	0.0052	6.07E-06	0.0104	2.03E-05	0.0065	8.85E-06	100	470
		0.4	30	1.93	0.32	1.55	0.19	0.0051	8.26E-06	0.0092	2.00E-05	0.0075	1.42E-05	1000	55
		0.4	30	1.93	0.36	1.23	0.15	0.0052	8.51E-06	0.0094	2.05E-05	0.0061	9.68E-06	100	501
	0.1	0.2	56	1.28	0.61	1.05	0.24	0.0044	5.28E-06	0.0047	4.08E-06	0.004	3.13E-06	1000	88
		0.4	55	1.3	0.52	0.89	0.2	0.0044	5.54E-06	0.0048	4.38E-06	0.0034	2.48E-06	100	126
														1000	21
														100	658
														1000	107
														100	162
														1000	26
														100	$\geq 1000$
														1000	283
														100	568
														1000	66

Table S3: **Full Simulation Results for  $n = 10000$ , Two-Sample Welch's t-test One Generation After Intervention.**  $R_0$  = target  $R_0$ .  $k$  = overdispersion.  $\Delta$  = % reduction in transmission.  $t$  = day of intervention.  $R_t^0 = R_t$  without treatment.  $R_t^1 = R_t$  with treatment.  $I_t$  = proportion of infectious persons at day of intervention.  $I_{t+1}^0$  = proportion of infectious persons at time of sampling without treatment.  $I_{t+1}^1$  = proportion of infectious persons at time of sampling with treatment.  $m$  = number of persons sampled from each cluster.  $C_s$  = number of clusters needed for each arm from simulations.

$R_0$	$k$	$\Delta$	$E[R_t^0]$	$Var[R_t^0]$	$E[R_t^0]$	$Var[R_t^0]$	$E[I_t]$	$Var[I_t]$	$E[I_{t+1}^0]$	$Var[I_{t+1}^0]$	$E[I_{t+1}^0]$	$Var[I_{t+1}^0]$	$m$	$C_S$
1.5	0.7	0.2	1.04	1.25	0.92	1.02	5.03E-04	0.027	5.57E-04	0.023	4.45E-04	10	$\geq 1000$	
			1.06	1.24	0.77	0.75	4.84E-04	0.027	5.26E-04	0.02	3.75E-04	50	$\geq 1000$	
			0.98	1.05	0.86	0.88	4.33E-04	0.024	4.43E-04	0.021	3.76E-04	100	689	
			1.03	1.2	0.71	0.68	4.23E-04	0.024	4.56E-04	0.018	2.98E-04	50	275	
	0.4	0.2	0.98	1.05	0.86	0.88	4.33E-04	0.024	4.43E-04	0.021	3.76E-04	10	$\geq 1000$	
			1.03	1.2	0.71	0.68	4.23E-04	0.024	4.56E-04	0.018	2.98E-04	50	275	
			0.79	0.96	0.67	0.73	2.58E-04	0.016	2.69E-04	0.013	2.12E-04	100	123	
			0.76	0.85	0.55	0.56	2.73E-04	0.015	2.56E-04	0.011	1.68E-04	50	592	
	2	0.7	0.2	1.2	1.46	1.01	0.98	9.02E-04	0.04	8.26E-04	0.035	6.79E-04	10	$\geq 1000$
				1.23	1.38	0.88	0.76	8.53E-04	0.041	8.06E-04	0.03	5.36E-04	50	494
				1.18	1.51	1	1.06	7.65E-04	0.035	6.57E-04	0.03	5.49E-04	100	205
				1.14	1.41	0.79	0.66	7.34E-04	0.034	6.74E-04	0.026	4.46E-04	10	$\geq 1000$
0.4	0.2	0.78	0.95	0.69	0.76	3.77E-04	0.018	3.19E-04	0.016	2.73E-04	50	220		
		0.78	0.96	0.61	0.63	3.83E-04	0.018	3.08E-04	0.014	2.33E-04	100	111		
		0.78	0.96	0.61	0.63	3.83E-04	0.018	3.08E-04	0.014	2.33E-04	10	$\geq 1000$		
		0.78	0.96	0.61	0.63	3.83E-04	0.018	3.08E-04	0.014	2.33E-04	50	751		

Table S4: **Full Simulation Results for  $n = 100$ , Two-Sample Welch's t-test One Generation After Intervention, Day of Intervention  $t=28$**   $R_0 =$  target  $R_0$ .  $k =$  overdispersion.  $\Delta =$  % reduction in transmission.  $R_t^0 = R_t$  without treatment.  $R_t^1 = R_t$  with treatment.  $I_t =$  number of infectious persons at day of intervention.  $I_{t+1}^0 =$  number of infectious persons at time of sampling without treatment.  $I_{t+1}^1 =$  number of infectious persons at time of sampling with treatment.  $m =$  number of persons sampled from each cluster.  $C_S =$  number of clusters needed for each arm from simulations.

$R_0$	$k$	$\Delta$	$E[R_t^0]$	$Var[R_t^0]$	$E[R_t^1]$	$Var[R_t^1]$	$E[I_t]$	$Var[I_t]$	$E[I_{t+1}^0]$	$Var[I_{t+1}^0]$	$E[I_{t+1}^1]$	$Var[I_{t+1}^1]$	$m$	$C_s$
1.5	0.7	0.2	1.45	1.63	1.19	1.15	0.0052	2.12E-05	0.0069	4.17E-05	0.0056	2.79E-05	100	$\geq 1000$
		0.4	1.44	1.79	0.92	0.73	0.0051	2.13E-05	0.0066	3.94E-05	0.0044	1.99E-05	1000	188
													100	295
	0.4	0.2	1.36	1.71	1.09	1.03	0.0046	1.67E-05	0.0057	2.96E-05	0.0046	2.03E-05	1000	43
													100	$\geq 1000$
													1000	189
	0.4	0.4	1.41	1.76	0.94	0.77	0.0046	1.64E-05	0.0058	2.93E-05	0.004	1.52E-05	100	384
													1000	54
	0.1	0.2	1.22	1.51	1.01	1.13	0.0037	9.31E-06	0.0041	1.48E-05	0.0034	1.16E-05	100	$\geq 1000$
													1000	259
	0.4	0.4	1.21	1.47	0.83	0.77	0.0037	9.62E-06	0.0041	1.54E-05	0.0028	8.09E-06	100	568
													1000	72
2	0.7	0.2	1.98	2.11	1.6	1.52	0.0101	7.72E-05	0.0164	1.48E-04	0.0135	1.07E-04	100	470
		0.4	1.93	2.2	1.23	0.87	0.0101	7.78E-05	0.0162	1.51E-04	0.0108	7.75E-05	1000	103
													100	123
	0.4	0.2	1.78	2.06	1.45	1.3	0.0085	5.54E-05	0.0126	9.28E-05	0.0104	6.85E-05	100	25
													1000	642
	0.4	0.4	1.78	1.98	1.15	0.88	0.0083	5.36E-05	0.0123	9.17E-05	0.0083	4.74E-05	1000	136
													100	169
	0.1	0.2	1.55	1.7	1.28	1.3	0.0062	2.52E-05	0.0079	3.48E-05	0.0066	2.67E-05	1000	31
													100	$\geq 1000$
	0.4	0.4	1.59	2.12	1.04	1	0.0061	2.54E-05	0.0078	3.50E-05	0.0053	1.94E-05	1000	174
													100	267
													1000	39

Table S5: **Full Simulation Results for  $n = 1000$ , Two-Sample Welch's t-test One Generation After Intervention, Day of Intervention  $t=28$**   $R_0 =$  target  $R_0$ .  $k =$  overdispersion.  $\Delta =$  % reduction in transmission.  $R_t^0 = R_t$  without treatment.  $R_t^1 = R_t$  with treatment.  $I_t =$  number of infectious persons at day of intervention.  $I_{t+1}^0 =$  number of infectious persons at time of sampling without treatment.  $I_{t+1}^1 =$  number of infectious persons at time of sampling with treatment.  $m =$  number of persons sampled from each cluster.  $C_s =$  number of clusters needed for each arm from simulations.

$R_0$	$k$	$\Delta$	$t$	$E[R_t^0]$	$Var[R_t^0]$	$E[R_t^1]$	$Var[R_t^1]$	$E[I_t]$	$Var[I_t]$	$E[I_{t+1}^0]$	$Var[I_{t+1}^0]$	$E[I_{t+1}^1]$	$Var[I_{t+1}^1]$	$m$	$C_S$	$C_S^0 - C_S$	$1 - \frac{C_S^0}{C_S}, \%$
1.5	0.7	0.2	11	1.17	2.77	0.8	1.56	0.018	1.51E-04	0.019	5.53E-04	0.014	3.61E-04	10	$\geq 1000$	-	-
														50	353	492	58.22
		0.4	9	1.15	2.83	0.52	1.03	0.016	9.58E-05	0.017	5.21E-04	0.008	1.88E-04	100	182	226	55.39
														10	424	-	-
		0.4	0.2	9	0.93	2.45	1.51	0.015	9.28E-05	0.014	4.37E-04	0.011	2.83E-04	50	99	200	66.89
														100	49	82	62.6
														10	$\geq 1000$	-	-
														50	736	-	-
		0.4	10	0.94	2.33	0.48	0.9	0.016	1.20E-04	0.015	4.24E-04	0.008	1.79E-04	100	392	266	40.43
														50	720	-	-
														100	162	199	55.12
		0.1	0.2	8	0.44	1.03	0.73	0.013	5.04E-05	0.006	1.69E-04	0.005	1.28E-04	100	74	92	55.42
														10	$\geq 1000$	-	-
														50	$\geq 1000$	-	-
		0.4	11	0.53	1.15	0.29	0.53	0.015	1.15E-04	0.008	1.97E-04	0.005	1.00E-04	100	$\geq 1000$	-	-
														50	400	211	34.53
2	0.7	0.2	8	1.91	5.82	1.36	3.72	0.017	1.33E-04	0.03	1.09E-03	0.022	7.35E-04	100	138	110	44.35
														10	845	-	-
														50	261	553	67.94
		0.4	8	1.92	5.9	0.9	1.9	0.017	1.24E-04	0.03	1.03E-03	0.015	3.93E-04	100	166	260	61.03
														10	228	321	58.47
		0.4	0.2	7	1.46	4.64	1.06	3	8.77E-05	0.022	8.37E-04	0.016	5.26E-04	50	68	83	54.97
														100	42	34	44.74
														10	$\geq 1000$	-	-
														50	424	-	-
		0.4	8	1.57	4.99	0.71	1.49	0.016	1.22E-04	0.024	8.41E-04	0.011	2.97E-04	100	275	289	51.24
														10	299	577	65.87
														50	84	144	63.16
		0.1	0.2	8	0.73	1.97	1.34	0.014	8.79E-05	0.011	3.29E-04	0.008	2.34E-04	100	49	66	57.39
														10	$\geq 1000$	-	-
														50	$\geq 1000$	-	-
		0.4	9	0.76	1.96	0.41	0.79	0.015	1.24E-04	0.012	3.27E-04	0.007	1.55E-04	100	580	-	-
														10	$\geq 1000$	-	-
														50	281	168	37.42
														100	123	90	42.25

Table S6: Full Simulation Results for  $n = 100$ , Two-Sample Welch's t-test Two Generations After Intervention.  $R_0 =$  target  $R_0$ .  $k =$  overdispersion.  $\Delta =$  % reduction in transmission.  $t =$  day of intervention.  $R_t^0 = R_t$  without treatment.  $R_t^1 = R_t$  with treatment.  $I_t =$  proportion of infectious persons at day of intervention.  $I_{t+1}^0 =$  proportion of infectious persons at time of sampling without treatment.  $I_{t+1}^1 =$  proportion of infectious persons at time of sampling with treatment.  $m =$  number of persons sampled from each cluster.  $C_S =$  number of clusters needed for each arm from simulations.  $C_S^0 =$  number of clusters needed from simulations using a two-sample Welch's t-test in Table S1.

$R_0$	$k$	$\Delta$	$t$	$E[R_t^0]$	$Var[R_t^0]$	$E[R_t^1]$	$Var[R_t^1]$	$E[I_t]$	$Var[I_t]$	$E[I_{t+1}^0]$	$Var[I_{t+1}^0]$	$E[I_{t+1}^1]$	$Var[I_{t+1}^1]$	$m$	$C_S$	$C_S^0 - C_S$	$1 - \frac{C_S}{C_S^0}, \%$
1.5	0.7	0.2	27	1.96	4.98	1.2	2.01	0.0049	1.91E-05	0.008	5.56E-05	0.0053	2.81E-05	100	244	725	74.82
		0.4	26	1.95	4.53	0.77	1.08	0.0048	1.87E-05	0.0078	5.41E-05	0.0032	1.28E-05	1000	59	83	58.45
		0.4	28	1.66	4.17	1.12	1.98	0.0047	1.78E-05	0.0064	3.70E-05	0.0045	2.11E-05	1000	16	27	62.79
		0.4	28	1.59	3.5	0.71	1.01	0.0047	1.78E-05	0.0063	3.60E-05	0.0029	1.04E-05	100	94	228	70.81
		0.1	26	1.16	2.36	0.8	1.19	0.0043	1.19E-05	0.0038	1.32E-05	0.0028	7.70E-06	1000	23	40	63.49
		0.4	32	1.27	2.72	0.58	0.83	0.0041	1.14E-05	0.004	1.41E-05	0.0019	5.14E-06	1000	126	157	55.48
2	0.7	0.2	16	3.77	15.62	2.42	7.55	0.0046	1.73E-05	0.0146	1.59E-04	0.0095	7.84E-05	100	138	488	77.96
		0.4	18	3.77	15.89	1.37	2.23	0.0054	2.48E-05	0.0159	1.58E-04	0.0064	3.72E-05	1000	64	94	59.49
		0.4	18	3.2	12.7	1.99	5.41	0.0046	1.83E-05	0.0119	1.06E-04	0.0078	5.67E-05	1000	14	22	61.11
		0.4	19	3.14	11.11	1.21	2.11	0.0049	2.02E-05	0.0122	9.99E-05	0.0051	2.61E-05	1000	64	82	56.16
		0.1	22	2.04	5.67	1.42	2.98	0.0045	1.49E-05	0.0073	3.70E-05	0.0052	2.11E-05	1000	16	26	61.9
		0.4	21	2.16	6.85	0.9	1.53	0.0042	1.46E-05	0.0072	3.74E-05	0.0032	1.19E-05	1000	103	160	60.84
														100	88	242	73.33
														1000	21	34	61.82

Table S7: Full Simulation Results for  $n = 1000$ , Two-Sample Welch's t-test Two Generations After Intervention.  $R_0$  = target  $R_0$ .  $k$  = overdispersion.  $\Delta$  = % reduction in transmission.  $t$  = day of intervention.  $R_t^0 = R_t$  without treatment.  $R_t^1 = R_t$  with treatment.  $I_t$  = proportion of infectious persons at day of intervention.  $I_{t+1}^0$  = proportion of infectious persons at time of sampling without treatment.  $I_{t+1}^1$  = proportion of infectious persons at time of sampling with treatment.  $m$  = number of persons sampled from each cluster.  $C_S$  = number of clusters needed for each arm from simulations.  $C_S^0$  = number of clusters needed for each arm from simulations using a two-sample Welch's t-test in Table S2.



$R_0$	$k$	$\Delta$	$t$	$E[R_t^0]$	$Var[R_t^0]$	$E[R_t^1]$	$Var[R_t^1]$	$E[I_t]$	$Var[I_t]$	$E[I_{t+1}^0]$	$Var[I_{t+1}^0]$	$E[I_{t+1}^1]$	$Var[I_{t+1}^1]$	$m$	$C_S$	$C_S^0 - C_S$	$1 - \frac{C_S^0}{C_S^1}, \%$
1.5	0.7	0.2	49	1.73	0.5	1.15	0.26	0.0049	7.27E-06	0.0076	1.13E-05	0.0051	6.08E-06	100	251	-	-
		0.4	50	1.71	0.48	0.72	0.13	0.005	7.76E-06	0.0077	1.21E-05	0.0033	2.87E-06	1000	39	139	78.09
	0.4	0.2	73	1.26	0.55	0.87	0.28	0.0052	7.11E-06	0.0055	5.14E-06	0.0039	2.79E-06	1000	11	30	77.2
														100	470	-	73.17
	0.4	0.2	68	1.38	0.91	0.6	0.14	0.0049	7.06E-06	0.0056	5.66E-06	0.0026	1.57E-06	1000	61	175	74.15
2	0.7	0.2	24	3.7	1.21	2.35	0.49	0.0051	5.62E-06	0.0175	3.57E-05	0.0113	1.81E-05	100	84	417	73.83
		0.4	24	3.67	1.16	1.36	0.17	0.0052	6.07E-06	0.0175	3.71E-05	0.0067	8.19E-06	1000	20	68	72.73
	0.4	0.2	30	3.11	1.91	2.02	0.72	0.0051	8.26E-06	0.0134	2.52E-05	0.009	1.43E-05	1000	6	15	81.75
														1000	28	79	71.43
	0.4	0.2	30	3.13	2.25	1.22	0.27	0.0052	8.51E-06	0.0137	2.44E-05	0.0057	6.52E-06	1000	33	129	80.85
														1000	7	19	73.83
	0.1	0.2	56	1.5	2.56	1	0.84	0.0044	5.28E-06	0.0044	3.12E-06	0.0032	1.79E-06	100	689	-	79.63
														1000	103	180	73.08
	0.4	0.2	55	1.54	2.55	0.67	0.33	0.0044	5.54E-06	0.0045	3.19E-06	0.0022	1.02E-06	100	182	386	-
														1000	24	42	63.6
																	67.96
																	63.64

Table S8: **Full Simulation Results for  $n = 10000$ , Two-Sample Welch's t-test Two Generations After Intervention.**  $R_0 =$  target  $R_0$ .  $k =$  overdispersion.  $\Delta = \%$  reduction in transmission.  $t =$  day of intervention.  $R_t^0 = R_t$  without treatment.  $R_t^1 = R_t$  with treatment.  $I_t =$  proportion of infectious persons at day of intervention.  $I_{t+1}^0 =$  proportion of infectious persons at time of sampling without treatment.  $I_{t+1}^1 =$  proportion of infectious persons at time of sampling with treatment.  $m =$  number of persons sampled from each cluster.  $C_S =$  number of clusters needed for each arm from simulations.  $C_S^0 =$  number of clusters needed for each arm from simulations using a two-sample Welch's t-test in Table S3.

$R_0$	$k$	$\Delta$	$t$	$E[R_t^0]$	$Var[R_t^0]$	$E[R_t^1]$	$Var[R_t^1]$	$E[I_t]$	$Var[I_t]$	$E[I_{t+1}^0]$	$Var[I_{t+1}^0]$	$E[I_{t+1}^1]$	$Var[I_{t+1}^1]$	$m$	$C_S$	$C_S^0 - C_S$	$1 - \frac{C_S^0}{C_S}, \%$
1.5	0.7	0.2	11	0.98	2.62	0.61	1.45	0.018	1.51E-04	0.015	4.38E-04	0.01	2.66E-04	10	$\geq 1000$	-	-
														50	297	548	64.85
		0.4	9	0.99	2.97	0.35	0.69	0.016	9.58E-05	0.014	4.38E-04	0.005	1.15E-04	100	146	262	64.22
														10	408	-	-
		0.4	9	0.75	1.99	0.5	1.13	0.015	9.28E-05	0.011	3.21E-04	0.007	1.98E-04	50	97	202	67.56
														100	45	86	65.65
		0.4	9	0.75	1.93	0.3	0.53	0.016	1.20E-04	0.011	3.13E-04	0.005	1.02E-04	10	$\geq 1000$	-	-
														50	611	-	-
		0.4	10	0.75	1.93	0.3	0.53	0.016	1.20E-04	0.011	3.13E-04	0.005	1.02E-04	100	299	359	54.56
														10	736	-	-
		0.1	8	0.28	0.63	0.23	0.46	0.013	5.04E-05	0.004	9.32E-05	0.003	6.95E-05	50	158	203	56.23
														100	68	98	59.04
		0.4	11	0.33	0.72	0.16	0.28	0.015	1.15E-04	0.005	1.11E-04	0.002	5.04E-05	10	$\geq 1000$	-	-
														50	793	-182	-29.79
		0.4	8	1.81	6.01	1.15	3.26	0.017	1.33E-04	0.026	8.70E-04	0.018	5.74E-04	100	236	12	4.84
														10	697	-	-
		0.4	8	1.75	5.84	0.69	1.58	0.017	1.24E-04	0.026	8.48E-04	0.011	2.95E-04	50	197	617	75.8
														100	123	303	71.13
		0.4	7	1.28	4.28	0.89	2.52	0.015	8.77E-05	0.018	6.36E-04	0.013	3.99E-04	10	213	336	61.2
														50	60	91	60.26
		0.4	8	0.46	1.07	0.37	0.85	0.014	8.79E-05	0.007	1.63E-04	0.005	1.28E-04	100	35	41	53.95
														10	$\geq 1000$	-	-
		0.4	8	1.32	4	0.52	1.18	0.016	1.22E-04	0.019	5.82E-04	0.008	2.09E-04	50	470	-	-
														100	275	289	51.24
		0.4	9	0.48	1.13	0.25	0.44	0.015	1.24E-04	0.007	1.74E-04	0.004	8.49E-05	10	322	554	63.24
														50	82	146	64.04
		0.4	8	0.46	1.07	0.37	0.85	0.014	8.79E-05	0.007	1.63E-04	0.005	1.28E-04	100	43	72	62.61
														10	$\geq 1000$	-	-
		0.4	9	0.48	1.13	0.25	0.44	0.015	1.24E-04	0.007	1.74E-04	0.004	8.49E-05	50	$\geq 1000$	-	-
														100	775	-	-
		0.4	9	0.48	1.13	0.25	0.44	0.015	1.24E-04	0.007	1.74E-04	0.004	8.49E-05	10	$\geq 1000$	-	-
														50	501	-52	-11.58
		0.4	9	0.48	1.13	0.25	0.44	0.015	1.24E-04	0.007	1.74E-04	0.004	8.49E-05	100	175	38	17.84

Table S9: **Full Simulation Results for  $n = 100$ , Two-Sample Welch's t-test Three Generations After Intervention.**  $R_0 =$  target  $R_0$ .  $k =$  overdispersion.  $\Delta =$  % reduction in transmission.  $t =$  day of intervention.  $R_t^0 = R_t$  without treatment.  $R_t^1 = R_t$  with treatment.  $I_t =$  proportion of infectious persons at day of intervention.  $I_{t+1}^0 =$  proportion of infectious persons at time of sampling without treatment.  $I_{t+1}^1 =$  proportion of infectious persons at time of sampling with treatment.  $m =$  number of persons sampled from each cluster.  $C_S =$  number of clusters needed for each arm from simulations.  $C_S^0 =$  number of clusters needed for each arm from simulations using a two-sample Welch's t-test in Table S1.

$R_0$	$k$	$\Delta$	$t$	$E[R_t^0]$	$Var[R_t^0]$	$E[R_t^1]$	$Var[R_t^1]$	$E[I_t]$	$Var[I_t]$	$E[I_{t+1}^0]$	$Var[I_{t+1}^0]$	$E[I_{t+1}^1]$	$Var[I_{t+1}^1]$	$m$	$C_S$	$C_S^0 - C_S$	$1 - \frac{C_S}{C_S^0}, \%$
1.5	0.7	0.2	27	2.31	8.81	1.16	2.63	0.0049	1.91E-05	0.0086	6.09E-05	0.0048	2.65E-05	100	126	843	87
		0.4	26	2.33	9.03	0.6	0.94	0.0048	1.87E-05	0.0085	6.08E-05	0.0024	8.97E-06	1000	37	105	73.94
		0.4	28	1.89	7.01	1.02	2.32	0.0047	1.78E-05	0.0066	3.88E-05	0.0038	1.69E-05	1000	43	252	85.42
		0.4	28	1.76	6.01	0.51	0.89	0.0047	1.78E-05	0.0063	3.70E-05	0.002	6.76E-06	100	193	31	72.09
		0.4	36	1.06	2.73	0.63	1.13	0.0043	1.19E-05	0.0032	1.15E-05	0.002	5.93E-06	1000	53	269	83.54
		0.1	32	1.17	3.29	0.37	0.53	0.0041	1.14E-05	0.0034	1.19E-05	0.0012	2.83E-06	100	68	352	83.81
		0.4	16	5.6	38.41	3.11	15.48	0.0046	1.73E-05	0.0189	1.89E-04	0.0111	9.27E-05	1000	15	48	76.19
		0.4	18	5.4	40.05	1.39	3.76	0.0054	2.48E-05	0.0195	1.75E-04	0.0058	3.34E-05	1000	22	46	67.65
		0.4	18	4.26	26.31	2.35	10.52	0.0046	1.83E-05	0.0138	1.14E-04	0.0081	5.54E-05	100	70	556	88.82
		0.4	19	4.25	24.94	1.13	2.77	0.0049	2.02E-05	0.0142	1.08E-04	0.0043	2.11E-05	1000	43	115	72.78
		0.1	22	2.21	9.39	1.37	4.07	0.0045	1.49E-05	0.0068	3.05E-05	0.0045	1.81E-05	100	19	139	87.97
		0.4	21	2.4	11.21	0.71	1.42	0.0042	1.46E-05	0.0068	3.28E-05	0.0024	7.91E-06	1000	10	26	72.22
														100	92	566	86.02
														1000	46	100	68.49
														100	25	172	87.31
														1000	11	31	73.81
														100	291	-	-
														1000	78	185	70.34
														100	65	265	80.3
														1000	16	39	70.91

Table S10: **Full Simulation Results for  $n = 1000$ , Two-Sample Welch's t-test Three Generations After Intervention.**  $R_0$  = target  $R_0$ .  $k$  = overdispersion.  $\Delta$  = % reduction in transmission.  $t$  = day of intervention.  $R_t^0 = R_t$  without treatment.  $R_t^1 = R_t$  with treatment.  $I_t$  = proportion of infectious persons at day of intervention.  $I_{t+1}^0$  = proportion of infectious persons at time of sampling without treatment.  $I_{t+1}^1$  = proportion of infectious persons at time of sampling with treatment.  $m$  = number of persons sampled from each cluster.  $C_S$  = number of clusters needed for each arm from simulations.  $C_S^0$  = number of clusters needed for each arm from simulations using a two-sample Welch's t-test in Table S2.

$R_0$	$k$	$\Delta$	$t$	$E[R_t^0]$	$Var[R_t^0]$	$E[R_t^0]$	$Var[R_t^0]$	$E[I_t]$	$Var[I_t]$	$E[I_{t+1}^0]$	$Var[I_{t+1}^0]$	$E[I_{t+1}^0]$	$Var[I_{t+1}^0]$	$m$	$C_S$	$C_S^0 - C_S$	$1 - \frac{C_S^0}{C_S}$ , %
1.5	0.7	0.2	49	2.06	1.26	1.11	0.36	0.0049	7.27E-06	0.0084	1.05E-05	0.0047	4.37E-06	100	115	-	-
		0.4	50	2.02	1.27	0.55	0.18	0.005	7.76E-06	0.0085	1.07E-05	0.0024	1.50E-06	1000	20	158	88.76
	0.4	0.2	73	1.33	1.54	0.75	0.42	0.0052	7.11E-06	0.0051	4.38E-06	0.003	1.75E-06	1000	37	270	87.95
														1000	6	35	85.37
	0.4	0.2	73	1.33	1.54	0.75	0.42	0.0052	7.11E-06	0.0051	4.38E-06	0.003	1.75E-06	100	267	-	-
														1000	37	199	84.32
	0.4	0.4	68	1.49	1.9	0.43	0.16	0.0049	7.06E-06	0.0053	4.59E-06	0.0017	7.46E-07	100	76	394	83.83
														1000	10	45	81.82
2	0.7	0.2	24	5.31	4.94	2.95	1.23	0.0051	5.62E-06	0.0233	2.89E-05	0.0135	1.65E-05	100	41	460	91.82
														1000	13	75	85.23
	0.4	0.4	24	5.25	4.61	1.36	0.26	0.0052	6.07E-06	0.0232	2.99E-05	0.0065	6.29E-06	100	12	114	90.48
														1000	4	17	80.95
	0.4	0.2	30	4.17	8.89	2.36	2	0.0051	8.26E-06	0.0157	1.70E-05	0.0094	9.95E-06	1000	69	589	89.51
														1000	20	87	81.31
	0.4	0.4	30	4.14	8.63	1.13	0.48	0.0052	8.51E-06	0.0159	1.60E-05	0.0049	3.91E-06	100	19	143	88.27
														1000	6	20	76.92
	0.1	0.2	56	1.64	7.41	0.93	1.83	0.0044	5.28E-06	0.0037	2.80E-06	0.0024	1.33E-06	100	549	-	-
														1000	92	191	67.49
	0.4	0.4	55	1.71	7.89	0.5	0.42	0.0044	5.54E-06	0.0038	2.86E-06	0.0014	5.39E-07	100	150	418	73.59
														1000	22	44	66.67

Table S11: **Full Simulation Results for  $n = 10000$ , Two-Sample Welch's t-test Three Generations After Intervention.**  $R_0$  = target  $R_0$ .  $k$  = overdispersion.  $\Delta$  = % reduction in transmission.  $t$  = day of intervention.  $R_t^0 = R_t$  without treatment.  $R_t^1 = R_t$  with treatment.  $I_t$  = proportion of infectious persons at day of intervention.  $I_{t+1}^0$  = proportion of infectious persons at time of sampling without treatment.  $I_{t+1}^1$  = proportion of infectious persons at time of sampling with treatment.  $m$  = number of persons sampled from each cluster.  $C_S$  = number of clusters needed for each arm from simulations.  $C_S^0$  = number of clusters needed for each arm from simulations using a two-sample Welch's t-test in Table S3.

$R_0$	$k$	$\Delta$	$t$	$E[R_t^0]$	$Var[R_t^0]$	$E[R_t^1]$	$Var[R_t^1]$	$E[I_t]$	$Var[I_t]$	$E[I_{t+1}^0]$	$Var[I_{t+1}^0]$	$E[I_{t+1}^1]$	$Var[I_{t+1}^1]$	$m$	$C_S$	$C_S^0 - C_S$	$1 - \frac{C_S^0}{C_S}$ , %
1.5	0.7	0.2	11	1.13	1.87	0.91	1.32	0.018	1.51E-04	0.02	4.98E-04	0.016	3.80E-04	10	$\geq 1000$	-	-
														50	814	31	3.67
														100	357	51	12.5
	0.4	0.4	9	1.06	1.74	0.72	1.04	0.016	9.58E-05	0.017	4.08E-04	0.011	2.47E-04	10	$\geq 1000$	-	-
														50	283	16	5.35
														100	111	20	15.27
	0.4	0.2	9	0.94	1.67	0.78	1.27	0.015	9.28E-05	0.015	3.93E-04	0.012	3.06E-04	10	$\geq 1000$	-	-
														50	$\geq 1000$	-	-
														100	533	125	19
		0.4	10	0.95	1.64	0.65	0.81	0.016	1.20E-04	0.016	4.45E-04	0.011	2.20E-04	10	$\geq 1000$	-	-
														50	345	16	4.43
														100	143	23	13.86
	0.1	0.2	8	0.53	1.11	0.45	0.79	0.013	5.04E-05	0.008	2.37E-04	0.007	1.59E-04	10	$\geq 1000$	-	-
														50	$\geq 1000$	-	-
														100	$\geq 1000$	-	-
	0.4	0.4	11	0.65	1.16	0.45	0.63	0.015	1.15E-04	0.011	2.82E-04	0.008	1.65E-04	10	$\geq 1000$	-	-
														50	533	78	12.77
														100	199	49	19.76
2	0.7	0.2	8	1.51	2.98	1.25	2.3	0.017	1.33E-04	0.026	7.89E-04	0.021	6.22E-04	10	$\geq 1000$	-	-
														50	775	39	4.79
														100	322	104	24.41
	0.4	0.4	8	1.53	3.02	0.95	1.42	0.017	1.24E-04	0.026	8.16E-04	0.016	3.92E-04	10	501	48	8.74
														50	142	9	5.96
														100	61	15	19.74
	0.4	0.2	7	1.21	2.53	1	1.91	0.015	8.77E-05	0.019	6.10E-04	0.016	4.62E-04	10	$\geq 1000$	-	-
														50	985	-	-
														100	376	188	33.33
	0.4	0.4	8	1.28	2.57	0.84	1.38	0.016	1.22E-04	0.022	6.62E-04	0.014	3.68E-04	10	814	62	7.08
														50	220	8	3.51
														100	88	27	23.48
	0.1	0.2	8	0.79	1.85	0.7	1.46	0.014	8.79E-05	0.013	4.20E-04	0.011	3.43E-04	10	$\geq 1000$	-	-
														50	$\geq 1000$	-	-
														100	$\geq 1000$	-	-
	0.4	0.4	9	0.86	1.81	0.58	0.94	0.015	1.24E-04	0.014	4.38E-04	0.01	2.68E-04	10	$\geq 1000$	-	-
														50	384	65	14.48
														100	142	71	33.33

Table S12: **Full Simulation Results for  $n = 100$ , One-Sample t-test With Matching On Sampled Susceptible Individuals.**  $R_0 =$  target  $R_0$ .  $k =$  overdispersion.  $\Delta =$  % reduction in transmission.  $t =$  day of intervention.  $R_t^0 = R_t$  without treatment.  $R_t^1 = R_t$  with treatment.  $I_t =$  proportion of infectious persons at day of intervention.  $I_{t+1}^0 =$  proportion of infectious persons at time of sampling without treatment.  $I_{t+1}^1 =$  proportion of infectious persons at time of sampling with treatment.  $m =$  number of persons sampled from each cluster.  $C_S =$  number of clusters needed for each arm from simulations.  $C_S^0 =$  number of clusters needed for each arm from simulations using a two-sample Welch's t-test in Table S1.

$R_0$	$k$	$\Delta$	$t$	$E[R_t^0]$	$Var[R_t^0]$	$E[R_t^0]$	$Var[R_t^0]$	$E[R_t^0]$	$Var[R_t^0]$	$E[I_{t+1}^0]$	$Var[I_{t+1}^0]$	$E[I_{t+1}^0]$	$Var[I_{t+1}^0]$	$m$	$C_S$	$C_S^0 - C_S$	$1 - \frac{C_S^0}{C_S}, \%$
1.5	0.7	0.2	27	1.5	1.71	1.18	1.1	0.0049	1.91E-05	0.0067	3.89E-05	0.0054	2.77E-05	100	938	31	3.2
		0.4	26	1.47	1.61	0.96	0.84	0.0048	1.87E-05	0.0064	3.81E-05	0.0042	1.83E-05	1000	138	4	2.82
		0.4	28	1.32	1.59	1.13	1.14	0.0047	1.78E-05	0.0057	3.02E-05	0.0049	2.33E-05	1000	283	12	4.07
		0.4	28	1.33	1.48	0.91	0.79	0.0047	1.78E-05	0.0057	3.04E-05	0.004	1.54E-05	100	42	1	2.33
		0.1	36	1.16	1.26	0.97	0.93	0.0043	1.19E-05	0.0043	1.46E-05	0.0036	1.01E-05	100	$\geq 1000$	-	-
		0.4	32	1.21	1.41	0.85	0.78	0.0041	1.14E-05	0.0044	1.51E-05	0.0031	8.50E-06	1000	319	3	0.93
2	0.7	0.2	16	2.08	3.5	1.65	2.35	0.0046	1.73E-05	0.009	7.55E-05	0.0071	4.94E-05	100	408	12	2.86
		0.4	18	2.1	3.21	1.29	1.32	0.0054	2.48E-05	0.0102	8.83E-05	0.0065	3.96E-05	1000	62	1	1.59
		0.4	18	1.91	2.97	1.5	2.01	0.0046	1.83E-05	0.0082	6.44E-05	0.0065	4.38E-05	100	$\geq 1000$	-	-
		0.4	19	1.92	2.92	1.2	1.15	0.0049	2.02E-05	0.0085	6.46E-05	0.0055	2.98E-05	1000	283	0	0
		0.1	22	1.55	2.2	1.29	1.63	0.0045	1.49E-05	0.0065	3.27E-05	0.0054	2.43E-05	100	595	16	2.62
		0.4	21	1.56	2.28	1.01	1.02	0.0042	1.46E-05	0.0061	3.09E-05	0.0041	1.64E-05	1000	70	-2	-2.94
														100	619	7	1.12
														1000	138	20	12.66
														1000	158	0	0
														1000	33	3	8.33
														100	658	0	0
														1000	119	27	18.49
														100	197	0	0
														1000	39	3	7.14
														100	$\geq 1000$	-	-
														1000	220	43	16.35
														100	322	8	2.42
														1000	45	10	18.18

Table S13: **Full Simulation Results for  $n = 1000$ , One-Sample t-test With Matching On Sampled Susceptible Individuals.**  $R_0 =$  target  $R_0$ .  $k =$  overdispersion.  $\Delta = \%$  reduction in transmission.  $t =$  day of intervention.  $R_t^0 = R_t$  without treatment.  $R_t^1 = R_t$  with treatment.  $I_t =$  proportion of infectious persons at day of intervention.  $I_{t+1}^0 =$  proportion of infectious persons at time of sampling without treatment.  $I_{t+1}^1 =$  proportion of infectious persons at time of sampling with treatment.  $m =$  number of persons sampled from each cluster.  $C_S =$  number of clusters needed for each arm from simulations.  $C_S^0 =$  number of clusters needed for each arm from simulations using a two-sample Welch's t-test in Table S2.

$R_0$	$k$	$\Delta$	$t$	$E[R_t^0]$	$Var[R_t^0]$	$E[R_t^1]$	$Var[R_t^1]$	$E[I_t]$	$Var[I_t]$	$E[I_{t+1}^0]$	$Var[I_{t+1}^0]$	$E[I_{t+1}^1]$	$Var[I_{t+1}^1]$	$m$	$C_S$	$C_S^0 - C_S$	$1 - \frac{C_S^0}{C_S}, \%$
1.5	0.7	0.2	49	1.36	0.17	1.13	0.15	0.0049	7.27E-06	0.0063	1.03E-05	0.0053	7.46E-06	100	$\geq 1000$	-	-
		0.4	50	1.36	0.14	0.92	0.08	0.005	7.76E-06	0.0065	1.08E-05	0.0044	5.44E-06	1000	174	4	2.25
														1000	299	8	2.61
	0.4	0.2	73	1.16	0.17	0.98	0.12	0.0052	7.11E-06	0.0056	6.16E-06	0.0047	4.58E-06	100	41	0	0
														1000	$\geq 1000$	-	-
		0.4	68	1.21	0.24	0.83	0.1	0.0049	7.06E-06	0.0054	6.71E-06	0.0038	3.72E-06	100	228	8	3.39
														1000	455	15	3.19
	2	0.7	24	2.09	0.22	1.66	0.13	0.0051	5.62E-06	0.0104	1.99E-05	0.0083	1.31E-05	100	55	0	0
														100	494	7	1.4
														1000	88	0	0
		0.4	24	2.08	0.21	1.28	0.08	0.0052	6.07E-06	0.0104	2.03E-05	0.0065	8.85E-06	100	126	0	0
														1000	22	-1	-4.76
	0.4	0.2	30	1.93	0.32	1.55	0.19	0.0051	8.26E-06	0.0092	2.00E-05	0.0075	1.42E-05	100	626	32	4.86
														1000	103	4	3.74
		0.4	30	1.93	0.36	1.23	0.15	0.0052	8.51E-06	0.0094	2.05E-05	0.0061	9.68E-06	100	159	3	1.85
														1000	27	-1	-3.85
	0.1	0.2	56	1.28	0.61	1.05	0.24	0.0044	5.28E-06	0.0047	4.08E-06	0.004	3.13E-06	100	$\geq 1000$	-	-
														1000	251	32	11.31
		0.4	55	1.3	0.52	0.89	0.2	0.0044	5.54E-06	0.0048	4.38E-06	0.0034	2.48E-06	100	533	35	6.16
														1000	61	5	7.58

Table S14: **Full Simulation Results for  $n = 10000$ , One-Sample t-test With Matching On Sampled Susceptible Individuals.**  $R_0 =$  target  $R_0$ .  $k =$  overdispersion.  $\Delta = \%$  reduction in transmission.  $t =$  day of intervention.  $R_t^0 = R_t$  without treatment.  $R_t^1 = R_t$  with treatment.  $I_t =$  proportion of infectious persons at day of intervention.  $I_{t+1}^0 =$  proportion of infectious persons at time of sampling without treatment.  $I_{t+1}^1 =$  proportion of infectious persons at time of sampling with treatment.  $m =$  number of persons sampled from each cluster.  $C_S =$  number of clusters needed for each arm from simulations.  $C_S^0 =$  number of clusters needed for each arm from simulations using a two-sample Welch's t-test in Table S3.

$R_0$	$k$	$\Delta$	$t$	$E[R_t^0]$	$Var[R_t^0]$	$E[R_t^1]$	$Var[R_t^1]$	$E[I_t]$	$Var[I_t]$	$E[I_{t+1}^0]$	$Var[I_{t+1}^0]$	$E[I_{t+1}^1]$	$Var[I_{t+1}^1]$	$m$	$C_S$	$C_S^0 - C_S$	$1 - \frac{C_S^0}{C_S}, \%$	$1 - \frac{C_S^M}{C_S}, \%$
1.5	0.7	0.2	11	1.13	1.87	0.91	1.32	0.018	1.51E-04	0.02	4.98E-04	0.016	3.80E-04	10	$\geq 1000$	-	-	-
														50	611	234	27.69	24.94
														100	408	0	0	-14.29
	0.4	0.4	9	1.06	1.74	0.72	1.04	0.016	9.58E-05	0.017	4.08E-04	0.011	2.47E-04	10	720	-	-	-
														50	205	94	31.44	27.56
														100	132	-1	-0.76	-18.92
	0.4	0.2	9	0.94	1.67	0.78	1.27	0.015	9.28E-05	0.015	3.93E-04	0.012	3.06E-04	10	$\geq 1000$	-	-	-
														50	969	-	-	-
														100	626	32	4.86	-17.45
	0.4	10		0.95	1.64	0.65	0.81	0.016	1.20E-04	0.016	4.45E-04	0.011	2.20E-04	10	783	-	-	-
														50	259	102	28.25	24.93
	0.1	0.2	8	0.53	1.11	0.45	0.79	0.013	5.04E-05	0.008	2.37E-04	0.007	1.59E-04	100	169	-3	-1.81	-18.18
														10	$\geq 1000$	-	-	-
														50	$\geq 1000$	-	-	-
														100	$\geq 1000$	-	-	-
	0.4	11		0.65	1.16	0.45	0.63	0.015	1.15E-04	0.011	2.82E-04	0.008	1.65E-04	10	$\geq 1000$	-	-	-
														50	388	223	36.5	27.2
														100	244	4	1.61	-22.61
2	0.7	0.2	8	1.51	2.98	1.25	2.3	0.017	1.33E-04	0.026	7.89E-04	0.021	6.22E-04	10	$\geq 1000$	-	-	-
														50	642	172	21.13	17.16
														100	424	2	0.47	-31.68
	0.4	8		1.53	3.02	0.95	1.42	0.017	1.24E-04	0.026	8.16E-04	0.016	3.92E-04	10	349	200	36.43	30.34
														50	115	36	23.84	19.01
	0.4	0.2	7	1.21	2.53	1	1.91	0.015	8.77E-05	0.019	6.10E-04	0.016	4.62E-04	100	78	-2	-2.63	-27.87
														10	$\geq 1000$	-	-	-
														50	814	-	-	17.36
														100	549	15	2.66	-46.01
	0.4	8		1.28	2.57	0.84	1.38	0.016	1.22E-04	0.022	6.62E-04	0.014	3.68E-04	10	529	347	39.61	35.01
														50	170	58	25.44	22.73
	0.1	0.2	8	0.79	1.85	0.7	1.46	0.014	8.79E-05	0.013	4.20E-04	0.011	3.43E-04	100	115	0	0	-30.68
														10	$\geq 1000$	-	-	-
														50	$\geq 1000$	-	-	-
														100	$\geq 1000$	-	-	-
	0.4	9		0.86	1.81	0.58	0.94	0.015	1.24E-04	0.014	4.38E-04	0.01	2.68E-04	10	985	-	-	-
														50	314	135	30.07	18.23
														100	205	8	3.76	-44.37

Table S15: **Full Simulation Results for  $n = 100$ , One-Sample t-test With Matching On Sampled Non-Infectious Individuals.**  $R_0$  = target  $R_0$ .  $k$  = overdispersion.  $\Delta$  = % reduction in transmission.  $t$  = day of intervention.  $R_t^0 = R_t$  without treatment.  $R_t^1 = R_t$  with treatment.  $I_t$  = proportion of infectious persons at day of intervention.  $I_{t+1}^0$  = proportion of infectious persons at time of sampling without treatment.  $I_{t+1}^1$  = proportion of infectious persons at time of sampling with treatment.  $m$  = number of persons sampled from each cluster.  $C_S$  = number of clusters needed for each arm from simulations.  $C_S^0$  = number of clusters needed for each arm from simulations using a two-sample Welch's t-test in Table S1.  $C_S^M$  = number of clusters needed for each arm from simulations using a two-sample Welch's t-test in Table S12.



$R_0$	$k$	$\Delta$	$t$	$E[R_t^0]$	$Var[R_t^0]$	$E[R_t^1]$	$Var[R_t^1]$	$E[I_t]$	$Var[I_t]$	$E[I_{t+1}^0]$	$Var[I_{t+1}^0]$	$E[I_{t+1}^1]$	$Var[I_{t+1}^1]$	$m$	$C_S$	$C_S^0 - C_S$	$1 - \frac{C_S}{C_S^0}, \%$	$1 - \frac{C_S^1}{C_S^0}, \%$
1.5	0.7	0.2	27	1.5	1.71	1.18	1.1	0.0049	1.91E-05	0.0067	3.89E-05	0.0054	2.77E-05	100	689	280	28.9	26.55
		0.4	26	1.47	1.61	0.96	0.84	0.0048	1.87E-05	0.0064	3.81E-05	0.0042	1.83E-05	100	138	4	2.82	0
	0.4	0.2	28	1.32	1.59	1.13	1.14	0.0047	1.78E-05	0.0057	3.02E-05	0.0049	2.33E-05	100	≥1000	-	-	-
		0.4	28	1.33	1.48	0.91	0.79	0.0047	1.78E-05	0.0057	3.04E-05	0.004	1.54E-05	100	330	-8	-2.48	-3.45
	0.1	0.2	36	1.16	1.26	0.97	0.93	0.0043	1.19E-05	0.0043	1.46E-05	0.0036	1.01E-05	100	≥1000	-	-	-
		0.4	32	1.21	1.41	0.85	0.78	0.0041	1.14E-05	0.0044	1.51E-05	0.0031	8.50E-06	100	283	0	0	0
2	0.7	0.2	16	2.08	3.5	1.65	2.35	0.0046	1.73E-05	0.009	7.55E-05	0.0071	4.94E-05	100	70	-2	-2.94	0
		0.4	18	2.1	3.21	1.29	1.32	0.0054	2.48E-05	0.0102	8.83E-05	0.0065	3.96E-05	100	158	0	0	20.19
	0.4	0.2	18	1.91	2.97	1.5	2.01	0.0046	1.83E-05	0.0082	6.44E-05	0.0065	4.38E-05	100	36	0	0	-14.49
		0.4	19	1.92	2.92	1.2	1.15	0.0049	2.02E-05	0.0085	6.46E-05	0.0055	2.98E-05	100	125	33	20.89	20.89
	0.1	0.2	22	1.55	2.2	1.29	1.63	0.0045	1.49E-05	0.0065	3.27E-05	0.0054	2.43E-05	100	36	0	0	-9.09
		0.4	21	1.56	2.28	1.01	1.02	0.0042	1.46E-05	0.0061	3.09E-05	0.0041	1.64E-05	100	517	141	21.43	21.43
														100	142	4	2.74	-19.33
														100	150	47	23.86	23.86
														1000	42	0	0	-7.69
														100	969	-	-	-
														1000	251	12	4.56	-14.09
														100	228	102	30.91	29.19
														1000	53	2	3.64	-17.78

Table S16: **Full Simulation Results for  $n = 1000$ , One-Sample t-test With Matching On Sampled Non-Infectious Individuals.**  $R_0 =$  target  $R_0$ .  $k =$  overdispersion.  $\Delta = \%$  reduction in transmission.  $t =$  day of intervention.  $R_t^0 = R_t$  without treatment.  $R_t^1 = R_t$  with treatment.  $I_t =$  proportion of infectious persons at day of intervention.  $I_{t+1}^0 =$  proportion of infectious persons at time of sampling without treatment.  $I_{t+1}^1 =$  proportion of infectious persons at time of sampling with treatment.  $m =$  number of persons sampled from each cluster.  $C_S =$  number of clusters needed for each arm from simulations.  $C_S^0 =$  number of clusters needed for each arm from simulations using a two-sample Welch's t-test in Table S2.  $C_S^M =$  number of clusters needed for each arm from simulations using a two-sample Welch's t-test in Table S13.

$R_0$	$k$	$\Delta$	$t$	$E[R_t^0]$	$Var[R_t^0]$	$E[R_t^0]$	$Var[R_t^0]$	$E[R_t]$	$Var[R_t]$	$E[I_{t+1}^0]$	$Var[I_{t+1}^0]$	$E[I_{t+1}^1]$	$Var[I_{t+1}^1]$	$m$	$C_S$	$C_S^0 - C_S$	$1 - \frac{C_S}{C_S^0}, \%$	$1 - \frac{C_S}{C_S^M}, \%$
1.5	0.7	0.2	49	1.36	0.17	1.13	0.15	0.0049	7.27E-06	0.0063	1.03E-05	0.0053	7.46E-06	100	799	-	-	-
		0.4	50	1.36	0.14	0.92	0.08	0.005	7.76E-06	0.0065	1.08E-05	0.0044	5.44E-06	100	142	32	20.22	18.39
		0.4	73	1.16	0.17	0.98	0.12	0.0052	7.11E-06	0.0056	6.16E-06	0.0047	4.58E-06	1000	189	110	38.44	36.79
		0.4	68	1.21	0.24	0.83	0.1	0.0049	7.06E-06	0.0054	6.71E-06	0.0038	3.72E-06	100	33	8	19.51	19.51
		0.4	24	2.09	0.22	1.66	0.13	0.0051	5.62E-06	0.0104	1.99E-05	0.0083	1.31E-05	100	$\geq 1000$	-	-	-
2	0.7	0.2	24	2.08	0.21	1.28	0.08	0.0052	6.07E-06	0.0104	2.03E-05	0.0065	8.85E-06	1000	178	50	24.58	21.93
		0.4	24	2.08	0.21	1.28	0.08	0.0052	6.07E-06	0.0104	2.03E-05	0.0065	8.85E-06	100	271	184	42.34	40.44
		0.4	30	1.93	0.32	1.55	0.19	0.0051	8.26E-06	0.0092	2.00E-05	0.0075	1.42E-05	100	44	11	20	20
		0.4	30	1.93	0.36	1.23	0.15	0.0052	8.51E-06	0.0094	2.05E-05	0.0061	9.68E-06	100	345	149	31.14	30.16
		0.1	56	1.28	0.61	1.05	0.24	0.0044	5.28E-06	0.0047	4.08E-06	0.004	3.13E-06	100	66	22	25	25
		0.4	55	1.3	0.52	0.89	0.2	0.0044	5.54E-06	0.0048	4.38E-06	0.0034	2.48E-06	1000	88	38	30.16	30.16
		0.4	55	1.3	0.52	0.89	0.2	0.0044	5.54E-06	0.0048	4.38E-06	0.0034	2.48E-06	100	17	5	19.05	22.73
		0.4	55	1.3	0.52	0.89	0.2	0.0044	5.54E-06	0.0048	4.38E-06	0.0034	2.48E-06	100	439	187	33.28	29.87
		0.4	55	1.3	0.52	0.89	0.2	0.0044	5.54E-06	0.0048	4.38E-06	0.0034	2.48E-06	100	86	17	19.63	16.5
		0.4	55	1.3	0.52	0.89	0.2	0.0044	5.54E-06	0.0048	4.38E-06	0.0034	2.48E-06	100	110	49	32.1	30.82
		0.4	55	1.3	0.52	0.89	0.2	0.0044	5.54E-06	0.0048	4.38E-06	0.0034	2.48E-06	100	22	5	15.38	18.52
		0.4	55	1.3	0.52	0.89	0.2	0.0044	5.54E-06	0.0048	4.38E-06	0.0034	2.48E-06	100	$\geq 1000$	-	-	-
		0.4	55	1.3	0.52	0.89	0.2	0.0044	5.54E-06	0.0048	4.38E-06	0.0034	2.48E-06	1000	189	62	33.22	24.7
		0.4	55	1.3	0.52	0.89	0.2	0.0044	5.54E-06	0.0048	4.38E-06	0.0034	2.48E-06	100	314	219	44.72	41.09
		0.4	55	1.3	0.52	0.89	0.2	0.0044	5.54E-06	0.0048	4.38E-06	0.0034	2.48E-06	1000	48	13	27.27	21.31

Table S17: **Full Simulation Results for  $n = 10000$ , One-Sample t-test With Matching On Sampled Non-Infectious Individuals.**  $R_0 = R_t$  = target  $R_0$ .  $k =$  overdispersion.  $\Delta = \%$  reduction in transmission.  $t =$  day of intervention.  $R_t^0 = R_t$  without treatment.  $R_t^1 = R_t$  with treatment.  $I_t =$  proportion of infectious persons at day of intervention.  $I_{t+1}^0 =$  proportion of infectious persons at time of sampling without treatment.  $I_{t+1}^1 =$  proportion of infectious persons at time of sampling with treatment.  $m =$  number of persons sampled from each cluster.  $C_S =$  number of clusters needed for each arm from simulations.  $C_S^0 =$  number of clusters needed for each arm from simulations using a two-sample Welch's t-test in Table S3.  $C_S^M =$  number of clusters needed for each arm from simulations using a two-sample Welch's t-test in Table S14.