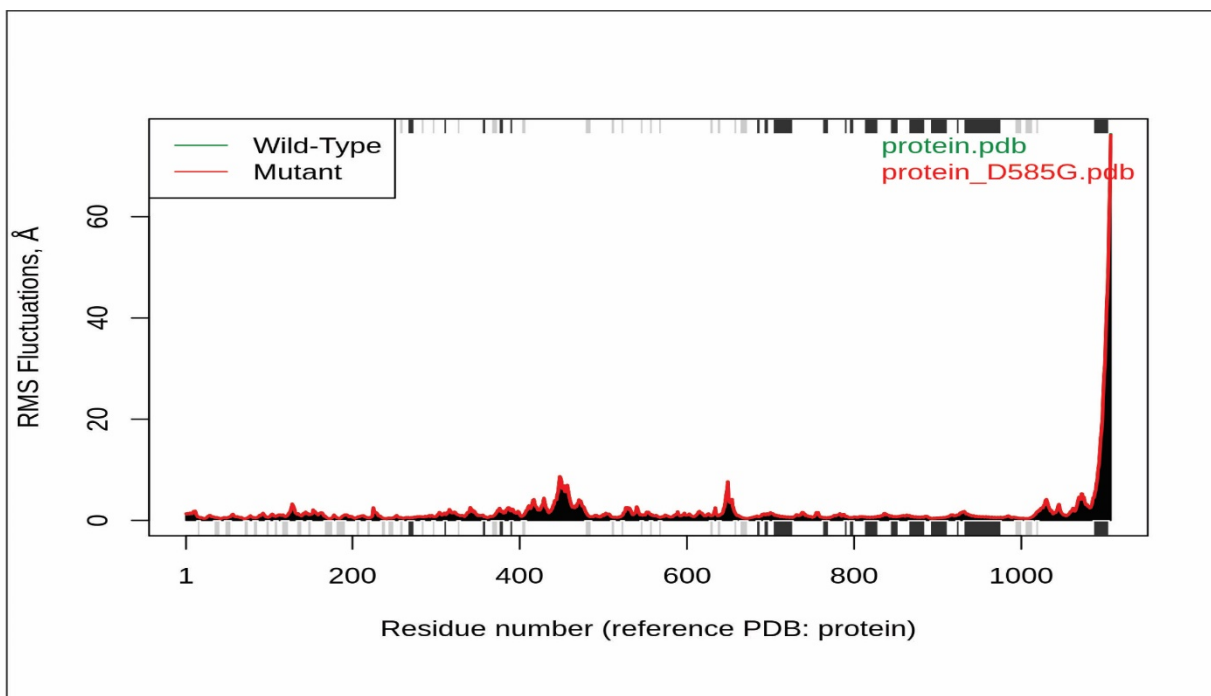
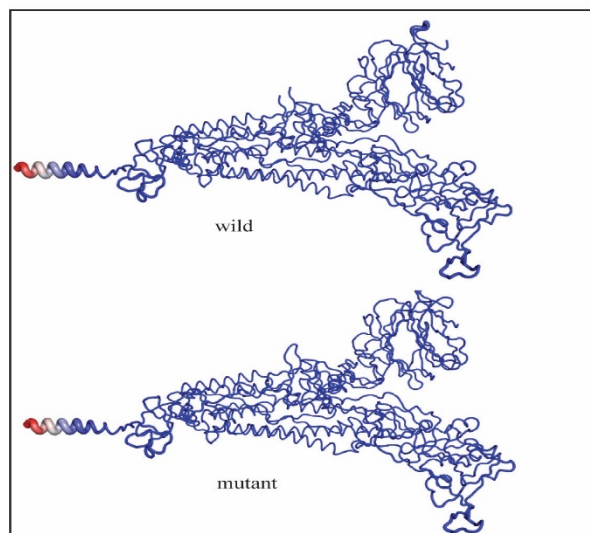


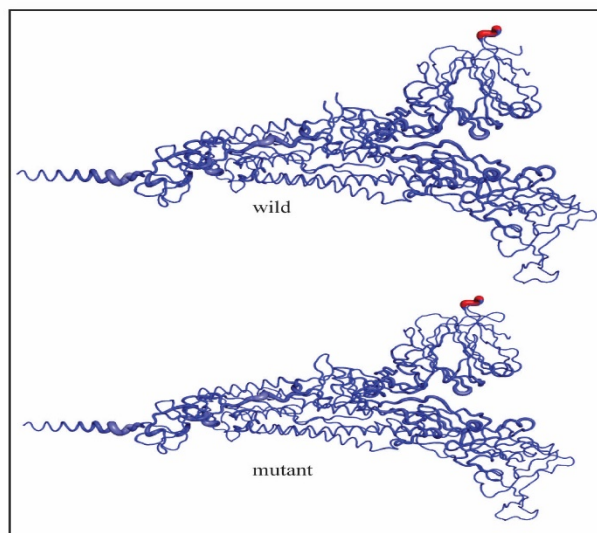
Supplementary Figure 1. Secondary structure prediction of (a) S protein, (b) ORF3a, (c) N protein, and (d) RdRp. The wild and mutant type was presented for each protein. Here we focused on the mutation position in the protein. The red and blue colors in the upper bar means helix and strand structures where the blue and yellow colors represent exposed and buried region, respectively. The blank space means loop and intermediate region.



a

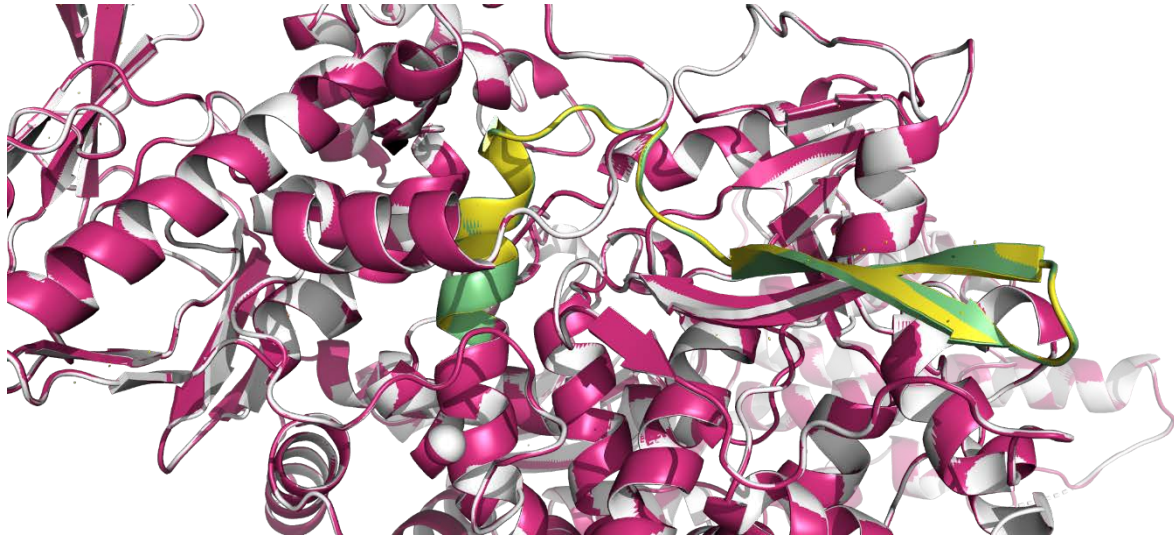


b

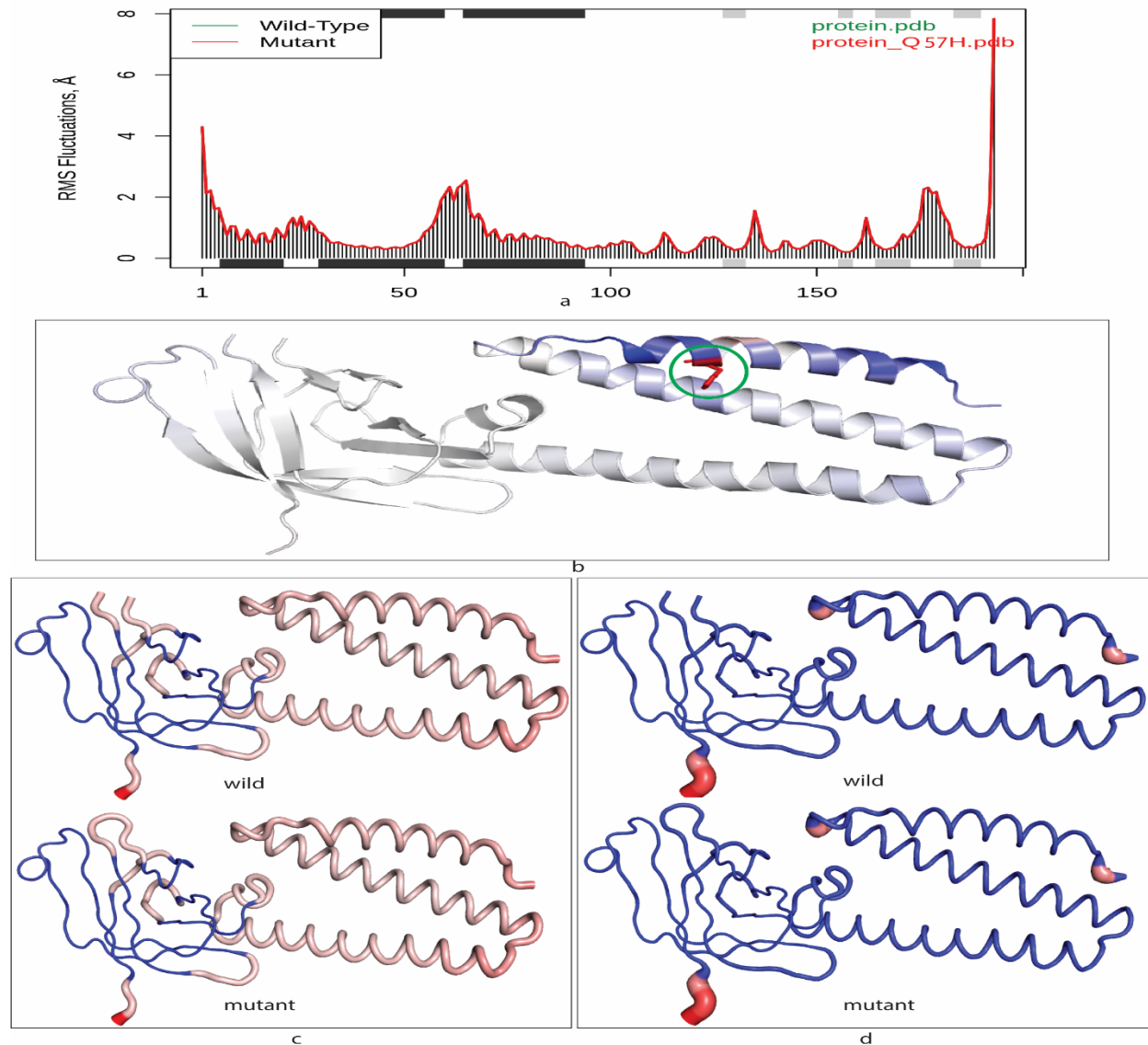


c

Supplementary Figure 2. Deformation and Fluctuations comparison between wild and mutant S proteins. (a) Ensemble normal mode analysis of wild (D_{614}) and mutant (G_{614}) types based on respective 3D structures and then aligned to compare the root-mean square (RMS) fluctuations in angstrom ($^{\circ}\text{A}$). Helices and strands are shown in both top and bottom of the images in gray and black colors, respectively. (b) Atomic fluctuation and (c) deformation energy provide the amplitude of the absolute atomic motion and a measure for the amount of local flexibility in the proteins where the magnitude is represented by thin to thick tube colored blue (low), white (moderate) and red (high). We found no variation in the fluctuation and deformation energy between the wild (D_{614}) and mutant (G_{614}) types.



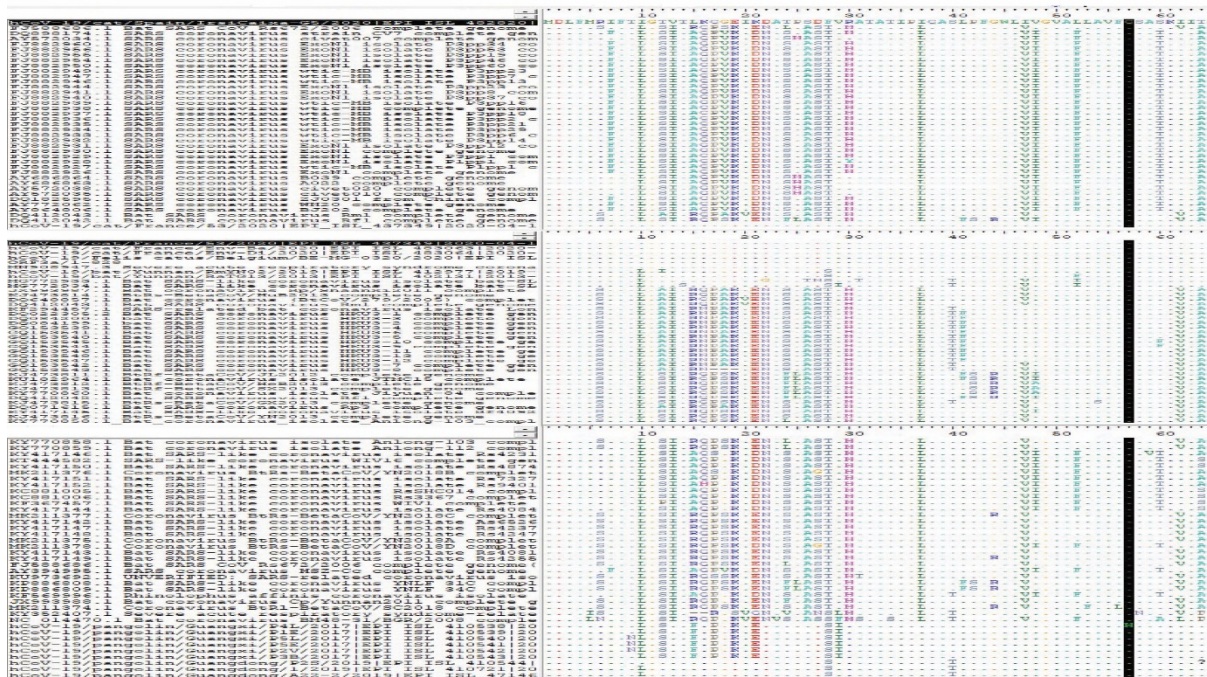
Supplementary Figure 3. Superimposition of wild type (P₃₂₃) RdRp on mutant protein (L₃₂₃). The overlapping of wild on the mutant RdRp showed no structural deviation. The wild and mutant RdRp were shown gray and pink colors where the specific region (310-340 amino acids) of the P₃₂₃ and L₃₂₃ were colored in yellow and green, respectively.



Supplementary Figure 4. Deformation, Fluctuations, and Vibrational Entropy Energy change between wild and mutant ORF3a proteins. (a) Ensemble normal mode analysis of wild (Q₅₇) and mutant (H₅₇) types based on respective 3D structures and then aligned to compare the root-mean square (RMS) fluctuations in angstrom (°Å). Helices and strands are shown in both top and bottom of the images in gray and black colors, respectively. **(b)** The vibrational entropy change upon mutation where blue color mutation site represents a rigidification or stability of the ORF3a mutant protein structure. The amino acid H⁵⁷ and its surrounding region showed higher stability (less flexibility). **(c)** Atomic fluctuation and **(d)** deformation energy provide the amplitude of the absolute atomic motion and a measure for the amount of local flexibility in the proteins where the magnitude is represented by thin to thick tube colored blue (low), white (moderate) and red (high). We found no variation in the fluctuation and deformation energy between the wild (Q₅₇) and mutant (H₅₇).

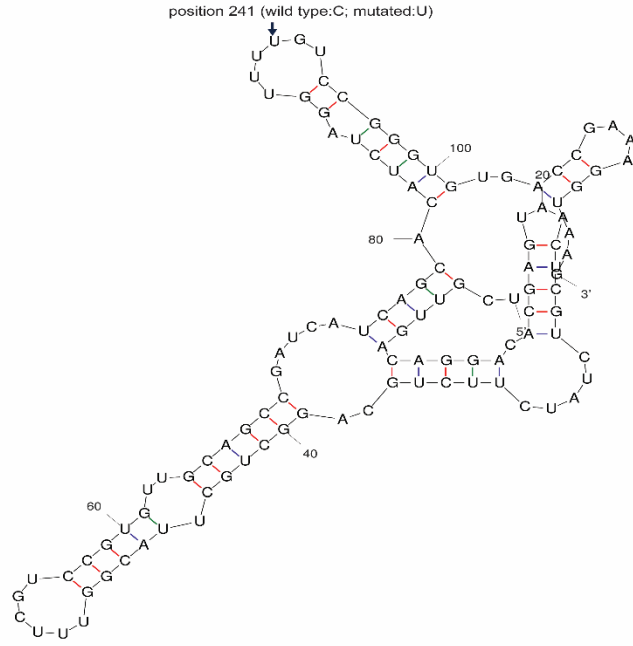
Species/Abbrv	G					*	*	*	*	*	*	*	*	*	*	*	*	*	*	*	*								
1. ORF3a/1-828_SARS-COV-2	I	P	I	Q	A	S	L	P	F	G	W	L	I	V	G	V	A	L	L	A	V	F	Q	S	A	S	K	I	I
2. hCoV-19/pangolin/Guangxi/P4L/2017[EPI_ISL_410538 2017/1-2	I	P	I	Q	A	S	L	P	F	G	W	L	I	V	G	V	A	L	L	A	V	F	H	S	A	S	K	I	I
3. hCoV-19/pangolin/Guangxi/P1E/2017[EPI_ISL_410539 2017/1-2	I	P	I	Q	A	S	L	P	F	G	W	L	I	V	G	V	A	L	L	A	V	F	Q	S	A	S	K	I	I
4. hCoV-19/pangolin/Guangxi/P5L/2017[EPI_ISL_410540 2017/1-2	I	P	I	Q	A	S	L	P	F	G	W	L	I	V	G	V	A	L	L	A	V	F	Q	S	A	S	K	I	I
5. hCoV-19/pangolin/Guangxi/P5E/2017[EPI_ISL_410541 2017/1-2	I	P	I	Q	A	S	L	P	F	G	W	L	I	V	G	V	A	L	L	A	V	F	Q	S	A	S	K	I	I
6. hCoV-19/pangolin/Guangxi/P2V/2017[EPI_ISL_410542 2017/1-2	I	P	I	Q	A	S	L	P	F	G	W	L	I	V	G	V	A	L	L	A	V	F	Q	S	A	S	K	I	I
7. hCoV-19/pangolin/Guangxi/P3B/2017[EPI_ISL_410543 2017/1-2	I	P	I	Q	A	S	L	P	F	G	W	L	I	V	G	V	A	L	L	A	V	F	Q	S	A	S	K	I	I
8. hCoV-19/pangolin/Guangdong/P2S/2019[EPI_ISL_410544 2019	I	P	I	Q	A	T	L	P	F	G	W	L	I	V	G	V	A	L	L	A	V	F	Q	S	A	S	K	I	I
9. hCoV-19/pangolin/Guangdong/1/2019[EPI_ISL_410721 2019(2)	I	P	I	Q	A	T	L	P	F	G	W	L	I	V	G	V	A	L	L	A	V	F	Q	S	A	S	K	I	I
10. hCoV-19/pangolin/Guangdong/A22-2/2019[EPI_ISL_471467 20	I	P	I	Q	A	T	L	P	F	G	W	L	I	V	G	V	A	L	L	A	V	F	Q	S	A	S	K	I	I
11. hCoV-19/pangolin/Guangdong/FM45-9/2019[EPI_ISL_471468	I	P	I	Q	A	T	L	P	F	G	W	L	I	V	G	V	A	L	L	A	V	F	Q	S	A	S	K	I	I
12. hCoV-19/pangolin/Guangdong/SM44-9/2019[EPI_ISL_471469	I	P	I	Q	A	T	L	P	F	G	W	L	I	V	G	V	A	L	L	A	V	F	Q	S	A	S	K	I	I
13. hCoV-19/pangolin/Guangdong/SM79-9/2019[EPI_ISL_471470	?	?	?	?	?	?	?	P	F	G	W	L	I	V	G	V	A	L	L	A	V	F	Q	S	A	S	K	I	I
14. hCoV-19/pangolin/Guangdong/1/2019[EPI_ISL_410721 2019/1	I	P	I	Q	A	T	L	P	F	G	W	L	I	V	G	V	A	L	L	A	V	F	Q	S	A	S	K	I	I

a



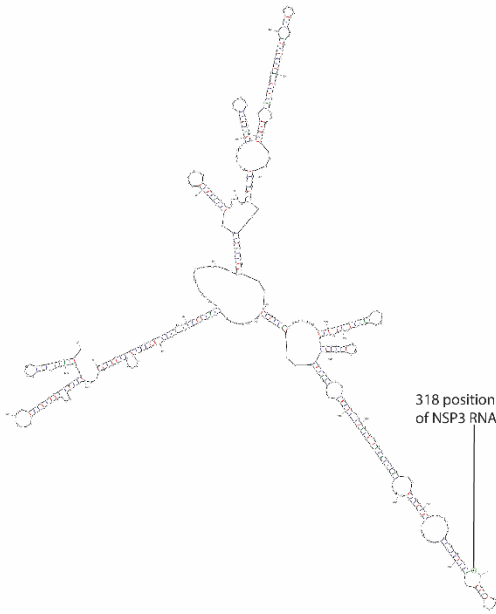
b

Supplementary Figure 5. Mutation analysis showing the transmembrane region 1 (41-LPGWLIVGVALLAVFQSASKII-63 amino acids) of SARS-CoV-2 and other related viruses of sarbecovirus lineages. (a) The pangolin coronavirus ORF3a protein alignment with the SARS-CoV-2 showed that only P4L strain from Guangxi, China in 2017 has the H⁵⁷ mutation. Other amino acids of TM1 are not changed for pangolin viruses. **(b)** Nine out of 23 amino acids of ORF3a are conserved for the sarbecovirus lineage. These are: F(43), W(45), L(46), G(49), V(50), A(51), V(55), K(61), and I(63). The black color line along the column showed 57 position.



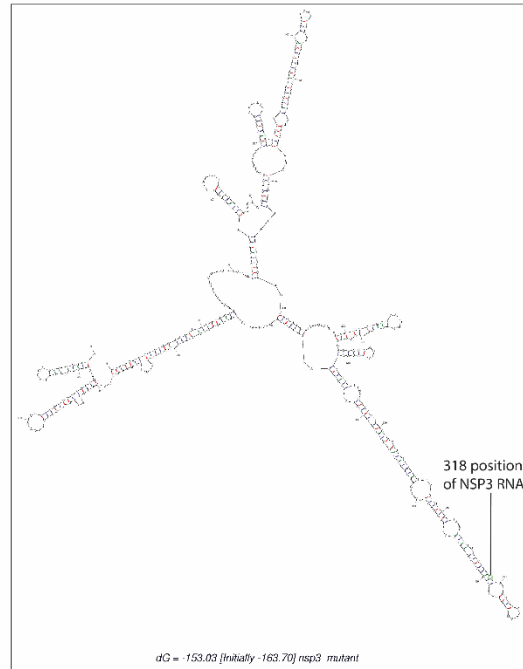
dG = -39.13 [Initially -39.80] 20Jul19-15-48-08

(a) 5' UTR mutant type structure



dG = -151.63 [Initially -162.90] 20Jul21-17-21-38

(b) Wild NSP3 RNA



dG = -153.03 [Initially -163.70] nsp3 mutant

(c) Mutant NSP3 RNA

Supplementary Figure 7. RNA secondary structures of mutant 5'-UTR (241T) and NSP3s. (a) RNA secondary structure of 5'-UTR (151-267 positions) was determined by the Mfold web server. The changing position at 241 (91 in this image) showed 'U' instead of 'C' as found in wild-type. The change has no impact

upon native secondary structure of stem-loop region 5B (SLR5B). **(b)** RNA secondary structure of NSP3 (1-500 positions) was presented in the figure. The mutated position is at 318, and there is a change from loop to stem due to this mutation (C>T) from wild type. From thermodynamic point of view, we found that the wild and mutant RNA structure have -151.63 and -153.03 Kcal/Mol stating the superior stability of the mutated type.

Week	No. of Cas	No. of Dea	Death rate	G group (%)	GH Group	GR Group	GV group (%)
Week 1		0		0.00%	0.00%	0.00%	0.00%
Week 2		0		0.00%	0.00%	0.00%	0.00%
Week 3		0		0.00%	0.00%	0.00%	0.00%
Week 4		0		0.00%	0.00%	0.00%	0.00%
Week 5	1732	0	12.99%	1.45%	0.00%	0.00%	0.00%
Week 6	11759	225	3.84%	2.88%	0.00%	0.00%	0.00%
Week 7	20167	451	3.76%	4.73%	1.78%	0.00%	0.00%
Week 8	11303	759	6.08%	0.00%	4.13%	0.83%	0.00%
Week 9	7382	687	4.86%	8.26%	3.21%	0.46%	0.00%
Week 10	7806	359	6.93%	22.01%	3.75%	16.89%	0.00%
Week 11	16638	541	11.58%	23.89%	13.80%	23.02%	0.00%
Week 12	43940	1926	14.06%	19.69%	31.85%	13.49%	0.00%
Week 13	124627	6177	12.34%	20.78%	34.91%	15.65%	0.04%
Week 14	301883	15382	9.83%	22.58%	30.87%	21.43%	0.00%
Week 15	440476	29678	8.71%	23.49%	32.85%	24.81%	0.01%
Week 16	485632	38358	8.42%	25.06%	27.54%	30.70%	0.00%
Week 17	468694	40899	7.65%	25.46%	27.22%	32.85%	0.00%
Week 18	490175	35863	8.15%	25.23%	29.17%	33.01%	0.02%
Week 19	471590	39960	7.37%	24.30%	31.36%	35.25%	0.00%
Week 20	481472	34757	5.92%	23.44%	31.49%	35.88%	0.00%
Week 21	519240	28503	4.98%	21.38%	30.57%	38.74%	0.03%
Week 22	585687	25840	4.29%	17.70%	31.76%	41.28%	0.10%
Week 23	630164	25137	4.16%	17.27%	39.34%	37.76%	0.00%
Week 24	741860	26222	3.61%	18.68%	29.34%	46.40%	0.08%
Week 25	759708	26773	3.97%	12.94%	21.11%	61.80%	0.02%
Week 26	884719	30174	3.39%	15.35%	29.38%	51.97%	0.05%
Week 27	982742	30020	2.88%	19.80%	34.25%	43.44%	0.05%
Week 28	1103844	28291	2.65%	13.83%	27.77%	56.64%	0.00%
Week 29	1224975	29277	2.52%	17.23%	20.04%	60.67%	0.08%
Week 30	1274869	30929	2.85%	11.71%	15.17%	71.37%	0.10%
Week 31	1436783	36325	2.38%	10.42%	12.50%	74.69%	0.60%
Week 32	1546074	34253	2.30%	12.94%	14.37%	70.84%	1.59%
Week 33	1543530	35582	2.53%	13.34%	18.03%	64.37%	3.87%
Week 34	1821055	39100	2.15%	14.92%	18.72%	60.28%	4.85%
Week 35	1742152	39240	2.19%	13.31%	22.38%	53.13%	9.85%
Week 36	1782811	38088	2.11%	13.87%	21.14%	47.69%	16.57%
Week 37	1886643	37559	2.15%	14.06%	23.92%	42.11%	19.16%
Week 38	1844959	40656	1.99%	11.49%	20.69%	39.70%	27.66%
Week 39	1998897	36764	1.82%	13.93%	18.82%	32.39%	34.61%
Week 40	2006967	36475	1.95%	13.15%	14.98%	31.32%	40.52%
Week 41	2026073	39079	1.94%	12.71%	17.31%	29.23%	40.54%
Week 42	2268892	39228	1.61%	10.86%	14.22%	24.24%	50.41%
Week 43	2443594	36547	1.63%	12.01%	13.97%	22.69%	51.27%
Week 44	2884604	39712	1.56%	11.02%	14.49%	19.53%	54.93%
Week 45	3355265	45051	1.63%	14.33%	14.65%	16.52%	54.44%
Week 46	3690495	54835	1.62%	11.62%	14.47%	17.17%	56.64%
Week 47	3977223	59699	1.69%	11.32%	12.95%	14.36%	61.30%
Week 48	4060891	67221	1.72%	12.26%	16.25%	14.74%	56.66%
Week 49	3935330	69916	1.87%	15.96%	17.86%	13.08%	52.94%
Week 50	3970427	73396	1.89%	17.47%	17.73%	11.11%	52.93%
Week 51	4329927	75038	1.82%	11.99%	12.73%	10.05%	65.14%
Week 52	4612790	79001	1.58%	18.86%	17.73%	10.08%	53.07%
Week 53	4068632	72761	1.87%	24.45%	14.08%	8.07%	53.40%
Week 54	4035226	76017	2.12%	20.48%	41.64%	11.60%	26.17%

Table S2: aa change in N protein SR rich region where the frequency is >300.

<u>WildtypeAA</u>	<u>Position</u> ↑	<u>MutatedAA</u>	<u>Frequency</u> ↑
S	194	L	1401
S	197	L	1001
S	188	L	822
S	193	I	583
S	202	N	310