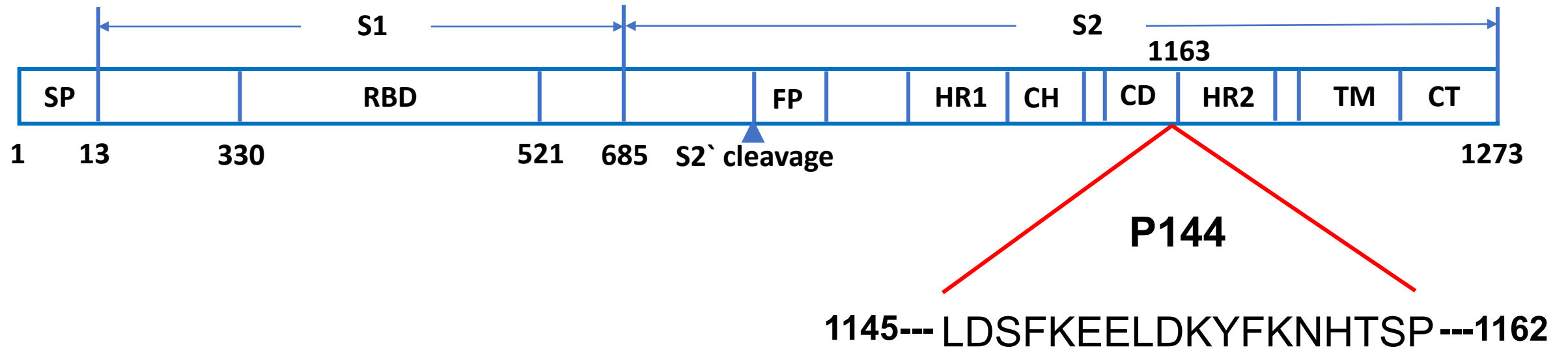
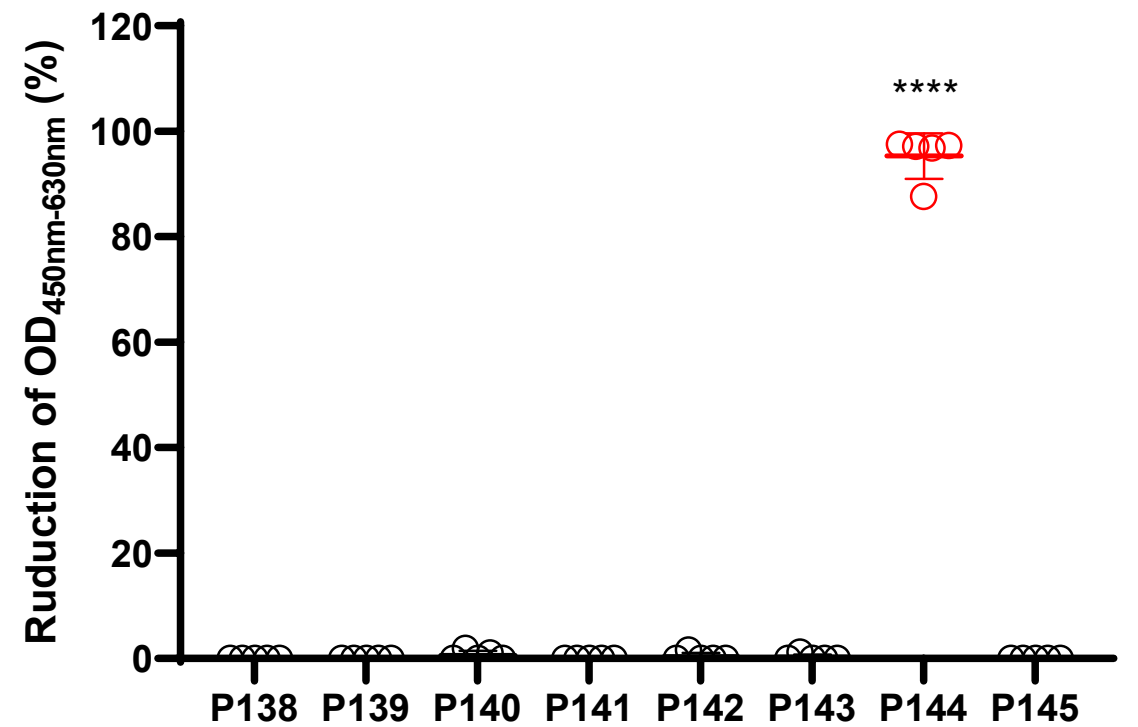
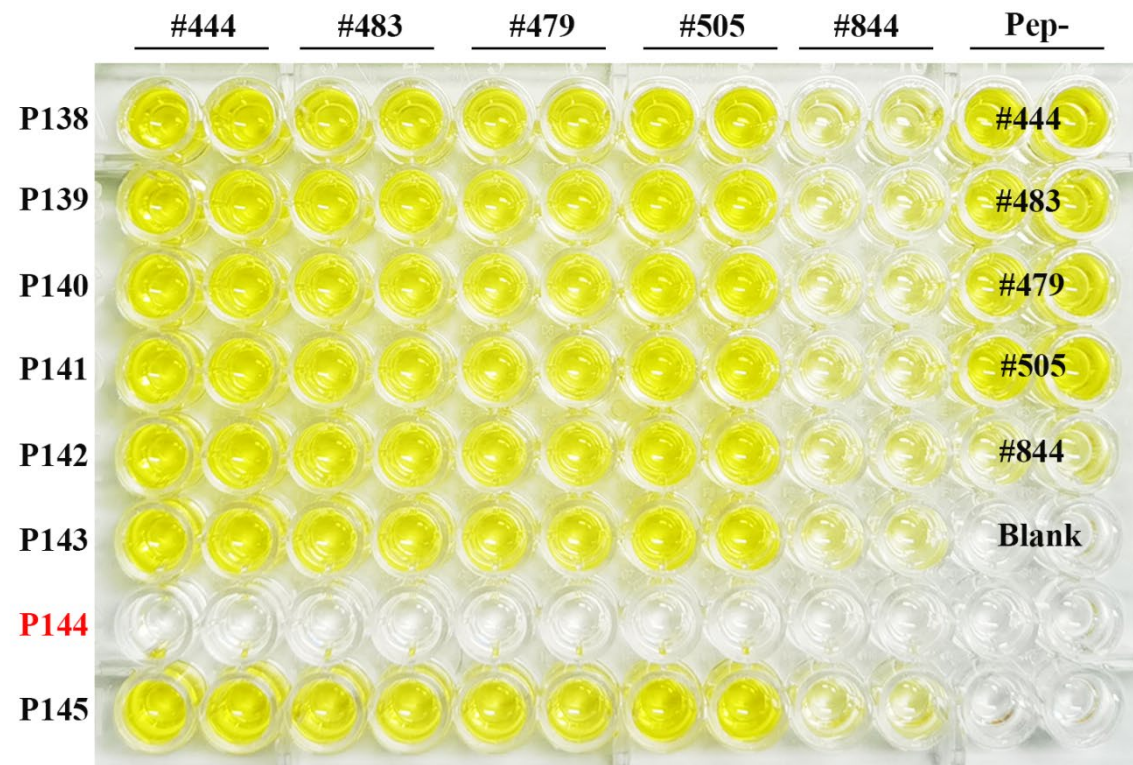


Supplementary Figure 1 A dominant linear epitope recognized by pre-existing antibodies was identified on the connector domain adjacent to the N terminal of HR2 region

A

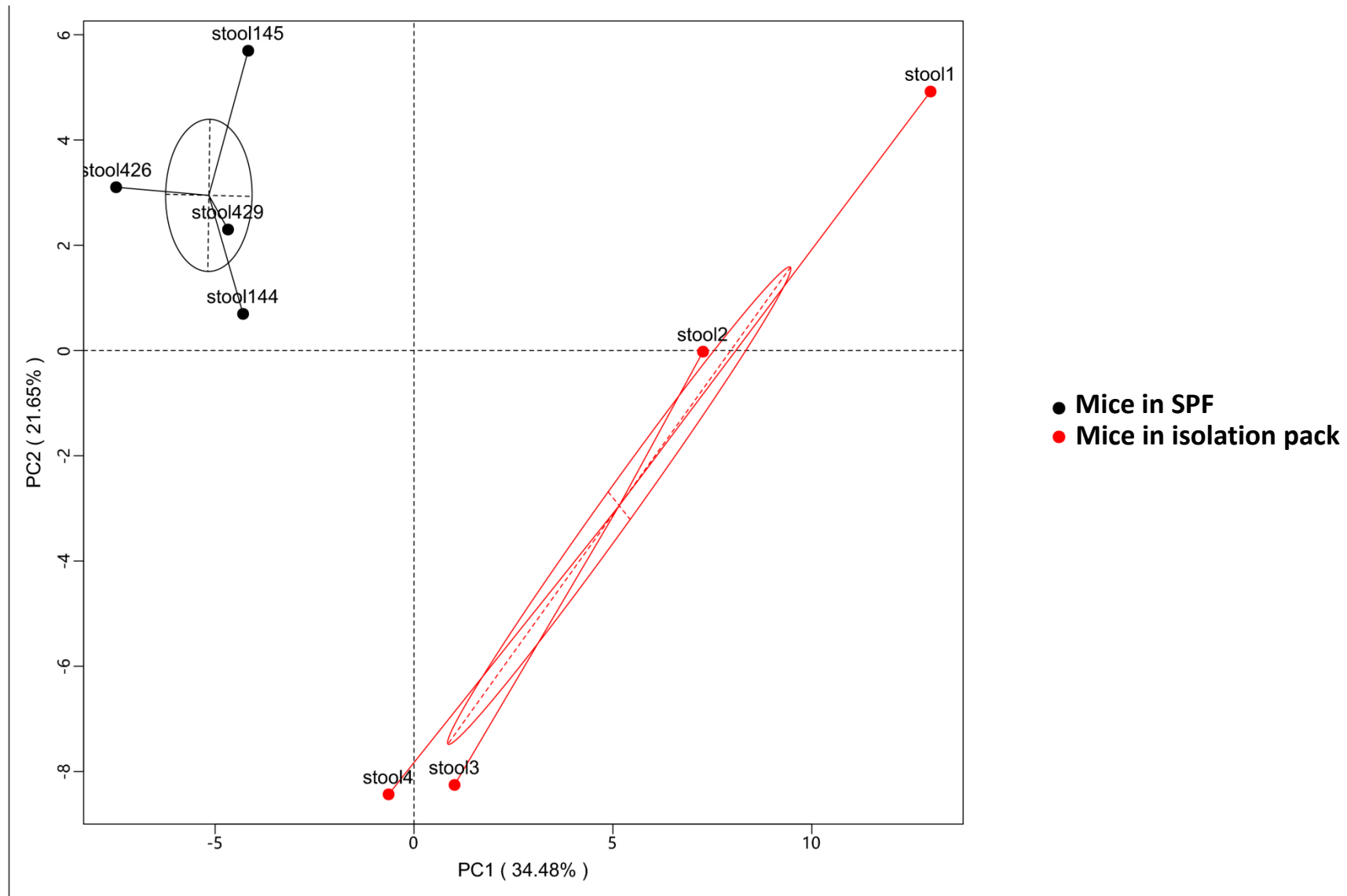


B

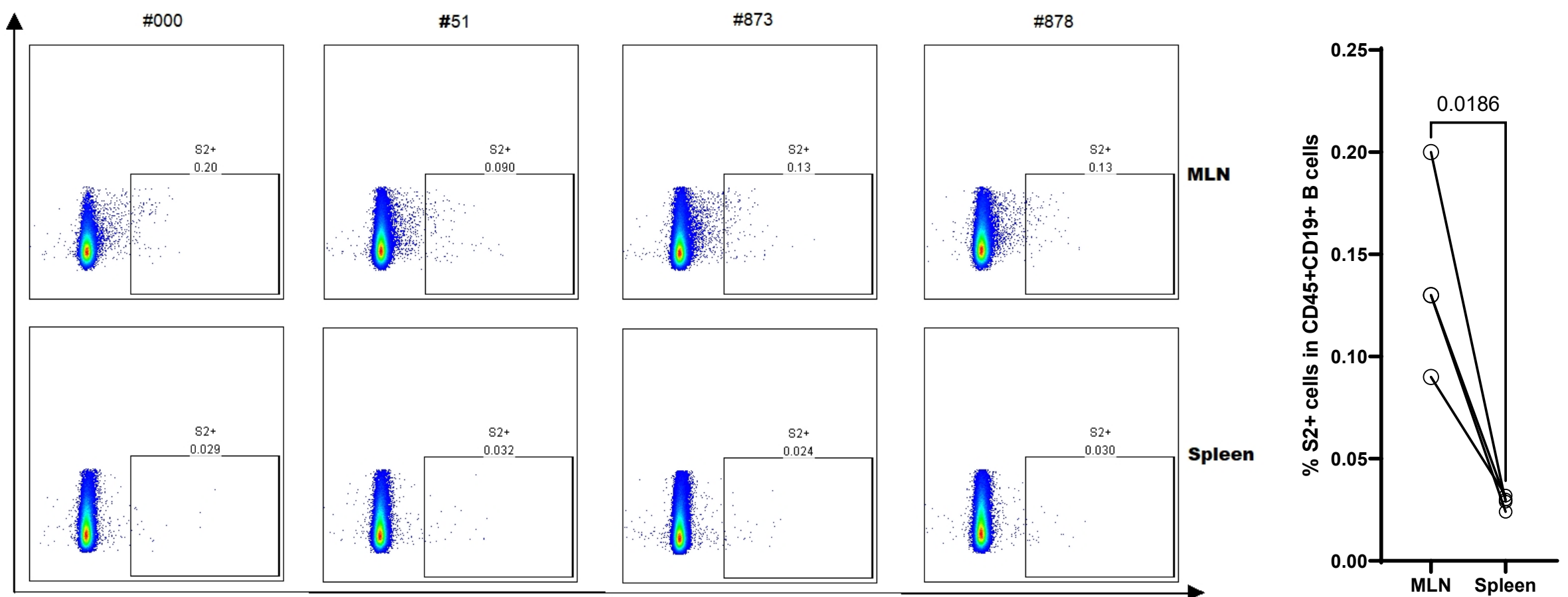


Supplementary Figure 2 The pre-existing cross-reactive antibodies might be induced by exposure to certain gut microbial antigens

A

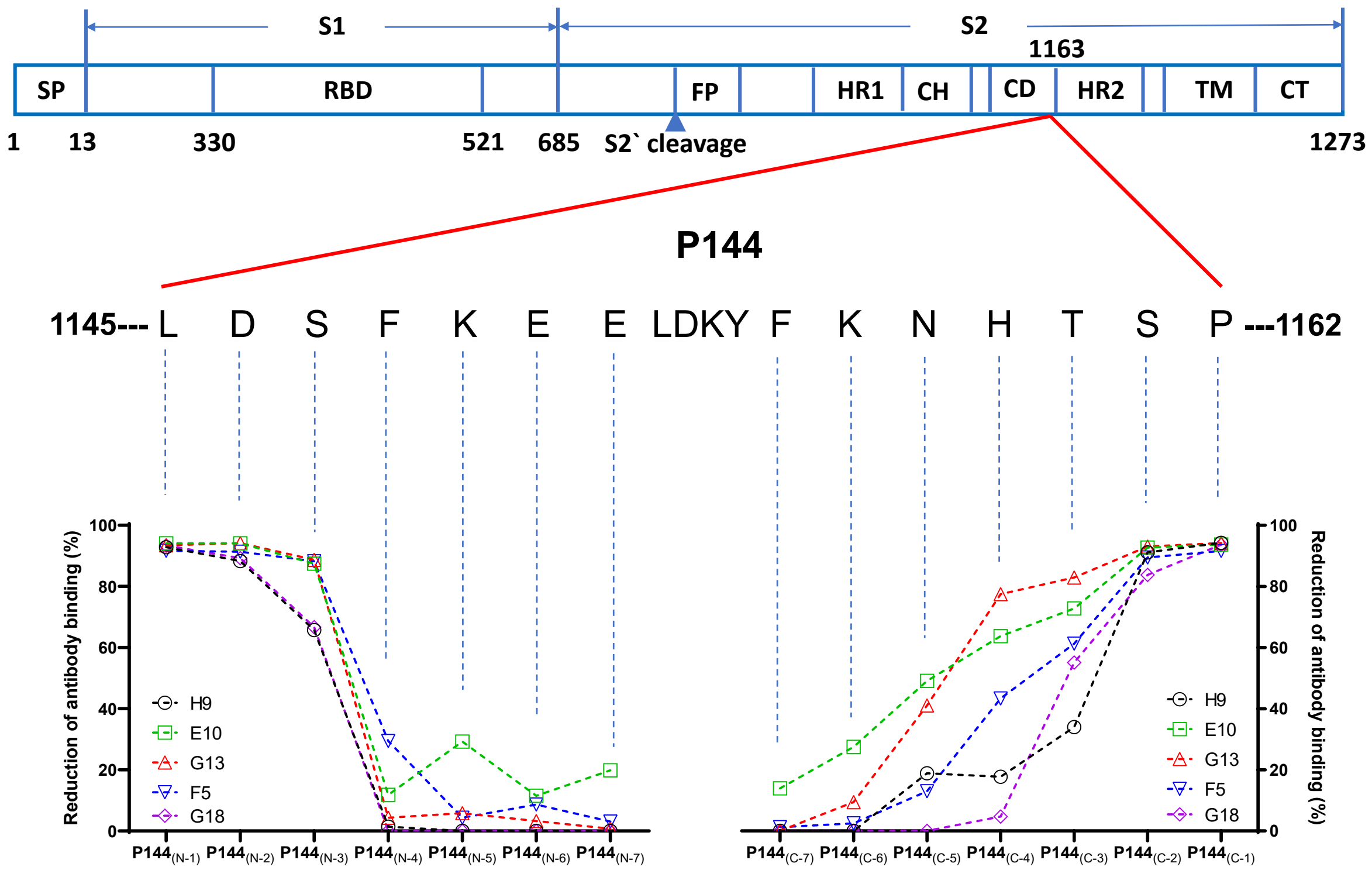


B

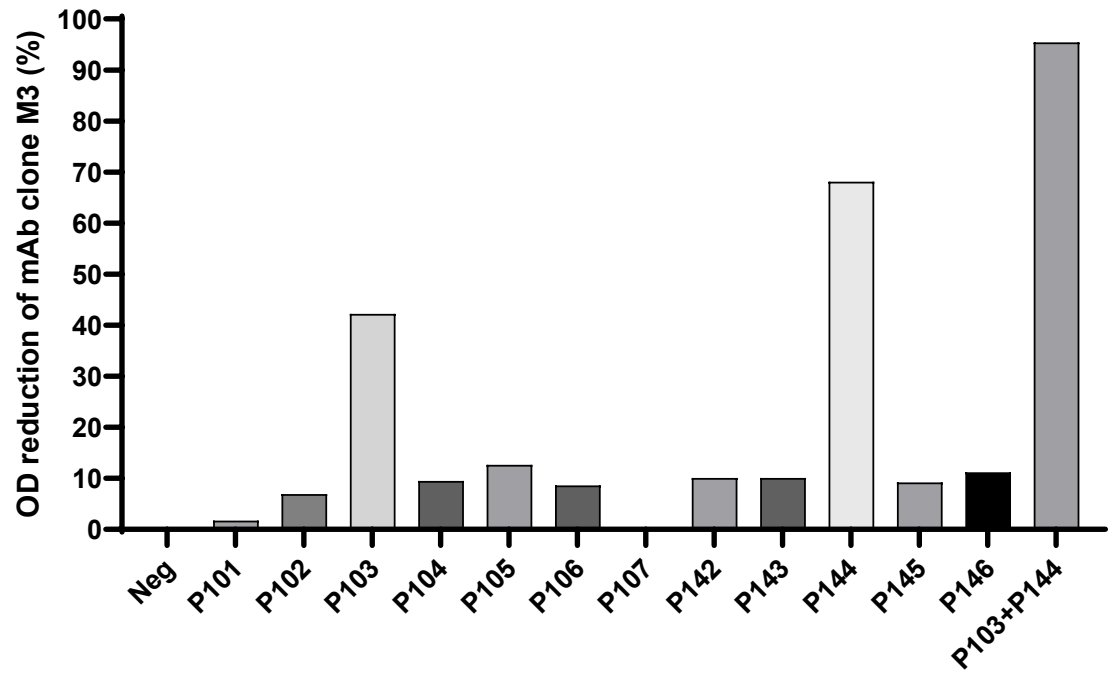


Supplementary Figure 3 Characterizations of the minimal epitope recognitions for the 6 monoclonal antibodies isolated from naïve mice

A



B



P144: 1145- LDSFKEELDKYFKNHTSP -1162

P103: 817- FIEDLLFNKVTLDAGFI -834

Supplementary Figure 4 Neutralizing activities of the purified monoclonal antibodies as measured using a pseudo virus neutralization assay

