

## Supplemental data

**Supplemental Table 1.** Treatment capsule allocation and timing of administration.

Treatment	Delayed release capsule <sup>1</sup> (1100h, T = 0)	Standard capsule <sup>2</sup> (1130h, T = 30)
Gastric	2x Vehicle control (125 mg oil <sup>3</sup> /capsule)	2x Amarasate (250 mg extract <sup>4</sup> /capsule)
Duodenum	2x Amarasate (250 mg extract <sup>4</sup> /capsule)	2x Vehicle control (125 mg oil <sup>3</sup> /capsule)
Placebo	2x Vehicle control (125 mg oil <sup>3</sup> /capsule)	2x Vehicle control (125 mg oil <sup>3</sup> /capsule)

<sup>1</sup>Delayed-release HPMC capsules (size 0, DRCaps™, Capsugel); <sup>2</sup>Standard HPMC capsules (size 0, VCaps™, Capsugel); <sup>3</sup>Canola oil; <sup>4</sup>Amarasate®, a bitter supercritical CO<sub>2</sub> extract of hops (*Humulus lupulus*).

**Supplemental Table 2.** Nutritional composition of the standard breakfast and *ad libitum* lunch and snack meals<sup>1</sup>.

	Weight (g)	Energy (kJ)	CHO (g)	CHO en%	Fat (g)	Fat en%	Protein (g)	Protein en%
<b>Standard breakfast (250 g serving, 2 MJ)</b>								
Puffed rice cereal	50	815	43	88	0.6	3	3.7	8
Milk, low fat	120	232	5.8	40	1.7	27	4.2	31
White bread	55	550	23.7	72	1.3	9	5	15
Margarine, spread	10	240	0	0	6.5	100	0	0
Berry jam	15	170	9.7	95	0	1	0.1	1
<b>Ad lib lunch: pasta &amp; meat sauce (2145 g serving, 8.9 MJ)</b>								
Pasta, spirals, boiled	981	5668	270	81	5.4	4	44	13
Meat sauce, beef and tomato	1164	3242	46	24	33	37	69	36
<b>Ad lib snack: ham sandwich (348 g serving, 3.2 MJ)</b>								
White bread	204	2051	88	72	5	9	19	15
Margarine, spread	24	626	0	0	17	100	0	0
Ham, sliced	120	528	2	7	6	43	16	50

<sup>1</sup>Ad lib, *ad libitum*; CHO, carbohydrate; Prot, protein; En%, energy percentage.

16 **Supplemental Table 3.** Visual analogue scale questions and their left and right anchor statements used  
 17 to access subjective ratings of the factors appetite, vitality, gastrointestinal discomfort and meal  
 18 palatability.  
 19

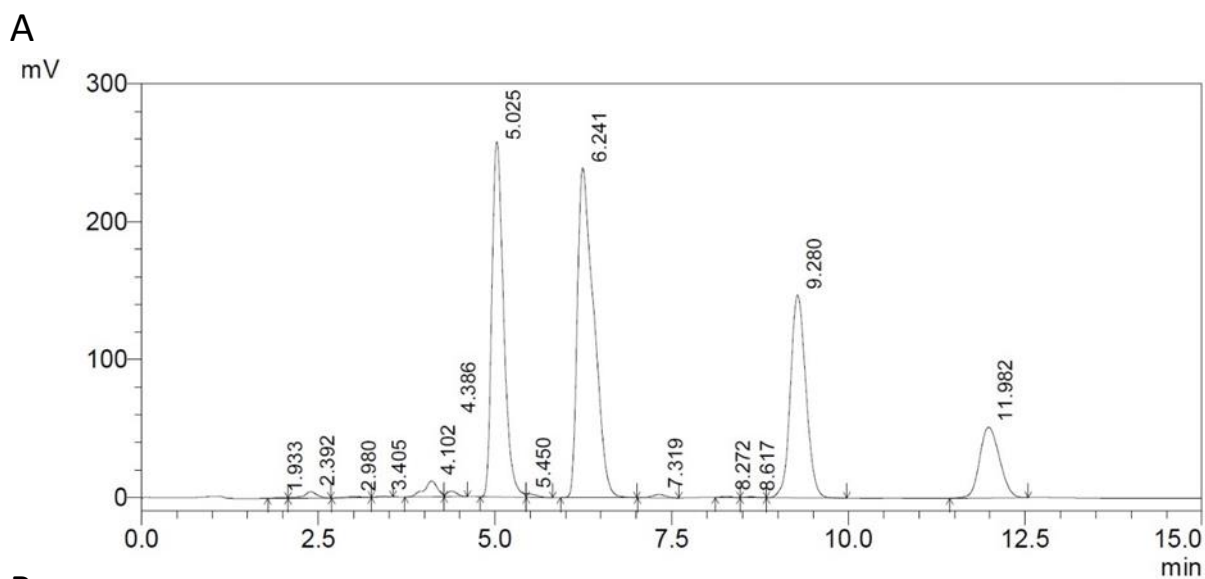
<b>Factors</b>	<b>Question</b>	<b>Left Anchor</b>	<b>Right Anchor</b>
<b>Appetite</b>			
Hunger	How hungry do you feel?	I am not hungry at all	I am as hungry as I've ever been
Fullness	How full do you feel?	I am not full at all	I am totally full
Satiety	How satisfied do you feel?	I am completely empty	I cannot eat another bite
Prospective Consumption	How much do you think you can eat now?	Nothing at all	A large amount
Thirst	How thirsty do you feel?	I'm not thirsty at all	I am as thirsty as I've ever been
<b>Vitality</b>			
Energetic	How energetic do you feel?	I do not feel energetic at all	I am as energetic as I have ever been
Relaxation	How relaxed do you feel?	I do not relaxed at all	I am as relaxed as I have ever been
<b>Gastrointestinal Discomfort</b>			
Urge to vomit	Do you have the urge to vomit?	Nothing at all	A large amount
Nauseous	Do you feel sick or nauseous?	Not at all	Very nauseous
Bloating	Do you feel bloated?	Not at all	A large amount
Abdominal discomfort	Do you have abdominal cramp or discomfort?	Nothing at all	A large amount
Heartburn	Do you have any heartburn?	Nothing at all	A large amount
<b>Meal palatability</b>			
Pleasantness	How pleasant was the meal?	Not at all pleasant	As pleasant as I have ever tasted
Visual Appeal	How did the meal look?	Bad	Good
Smell	How did the meal smell?	Bad	Good
Taste	How did the meal taste?	Bad	Good
Aftertaste	How much aftertaste was there?	None	Much
Overall Palatability	How appealing was the meal?	Bad	Good

21 **Supplemental Table 4.** Immunoassay quality control values for the Magpix multiplexed magnetic bead  
 22 assays<sup>1</sup> and the Cholecystokinin (CCK) radioimmunoassay<sup>2</sup>.

	Ghrelin (active) (pg/mL)	GIP (pg/mL)	GLP-1 (active) (pg/mL)	Insulin (pg/mL)	PP (pg/mL)	PYY (pg/mL)	CCK (pM)
Standard curve	13.7–10,000	1.4–1000	2.7–2000	137– 100,000	2.7–2000	13.7–10000	0.78–50
Min DC	13.6	0.7	1.4	58.9	1.8	11.4	0.63
Max DC	11956	2398	4595	231314	4094	6846	181
Interassay %CV	5.3	4.7	8.1	3.9	4.4	4.9	9.2
Intraassay %CV	2.5	3.4	3.9	3.1	3.8	6.3	4.1

23 <sup>1</sup>Plasma active ghrelin, active glucagon-like peptide-1 (GLP-1), total peptide YY (PYY), insulin, total glucose-  
 24 dependent insulinotropic polypeptide (GIP) and pancreatic polypeptide (PP) concentrations were measured using  
 25 a multiplexed magnetic bead assay (HMHMAG-34K; Merck-Millipore, Massachusetts USA). Cholecystokinin was  
 26 measured using a commercial radioimmunoassay kit (EURIA-CCK, Eurodiagnostica). Minimal detectable  
 27 concentration (Min DC), maximal detectable concentration (Max DC).

28

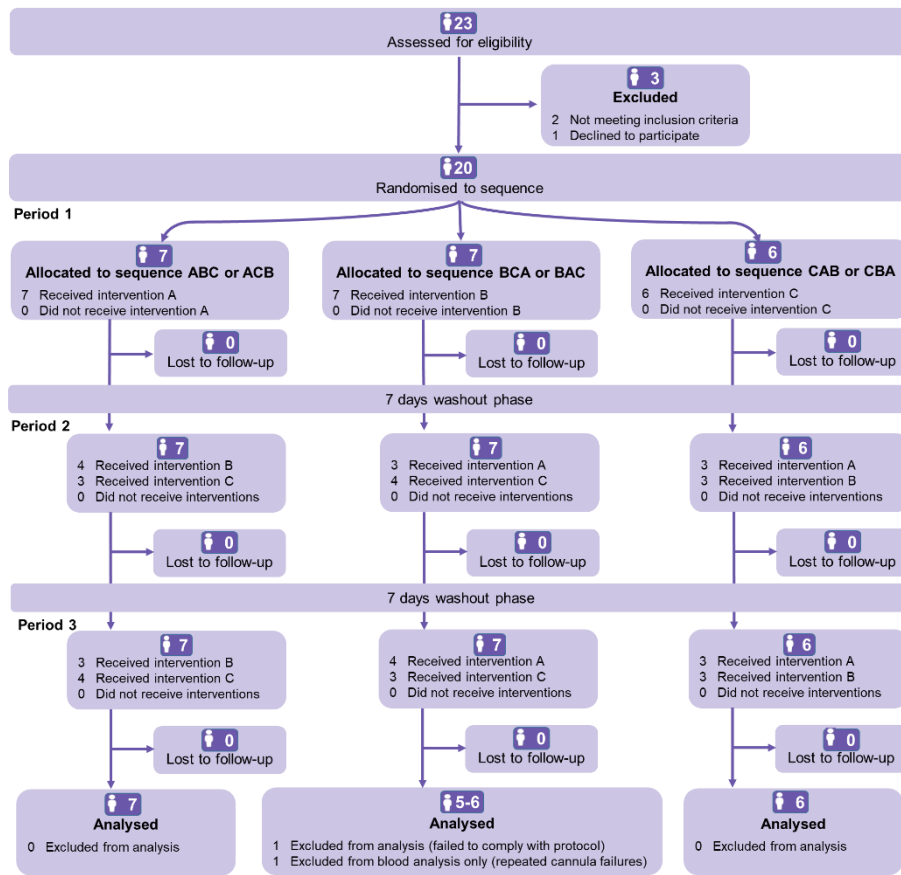


**B**

Compound	Retention Time (RT)	Percentage
Xanthohumol	2.392	0.07
Cohumulone	5.025	20.03
Adhumulone/humulone	6.241	30.96
Colupulone	9.280	20.25
Adlupulone/lupulone	11.982	9.20
Total $\alpha$ -Acid		50.99
Total $\beta$ -Acid		29.45

29 **Supplemental Figure 1.** HPLC UV chromatogram (A) of the supercritical CO<sub>2</sub> hops extract used in the  
 30 formulation of the Amarasate® treatments. Peak identifications, retention time and relative  
 31 concentration expressed as percentages are listed in the included table (B).

32



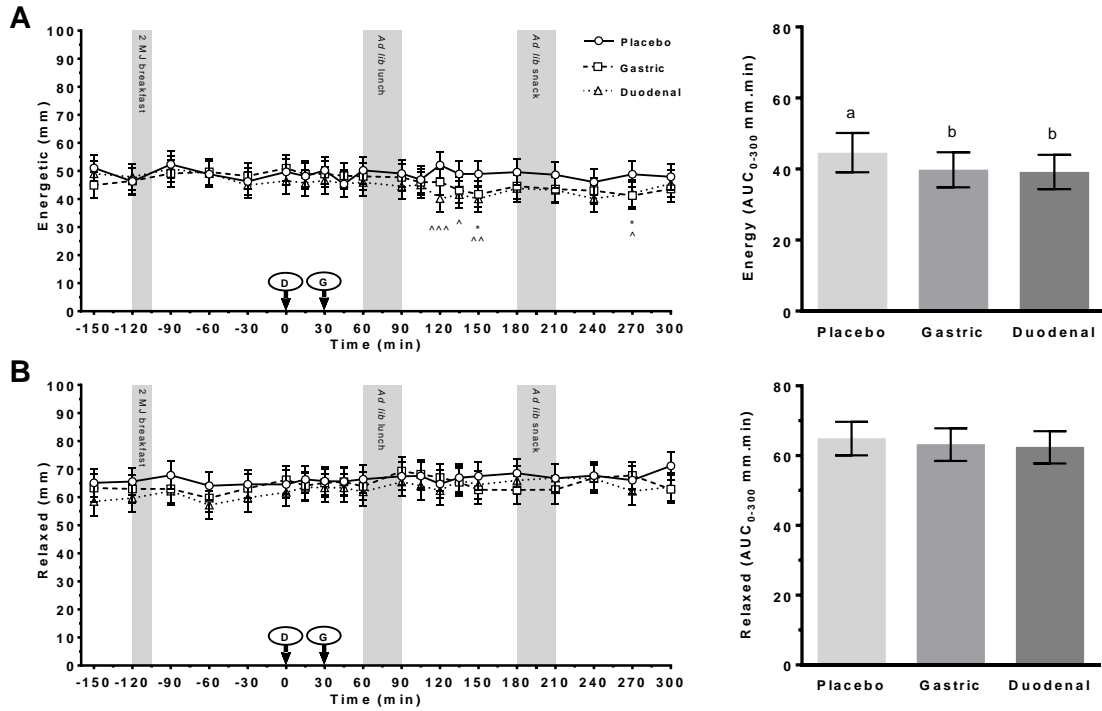
33

34

35

36 **Supplemental Figure 2.** CONSORT flow diagram showing the flow of participants through the process  
 37 of recruitment, randomization to the six possible treatment sequences, exclusions and data analysis.  
 38 Treatments are (A) duodenal and (B) gastric delivery of a hops extract or (C) placebo (vehicle control).  
 39 Figure is based on the recommendations of the CONSORT extension to randomized crossover trials  
 40 (105).

41



42

43

44

45

46

47

48

49

50

51

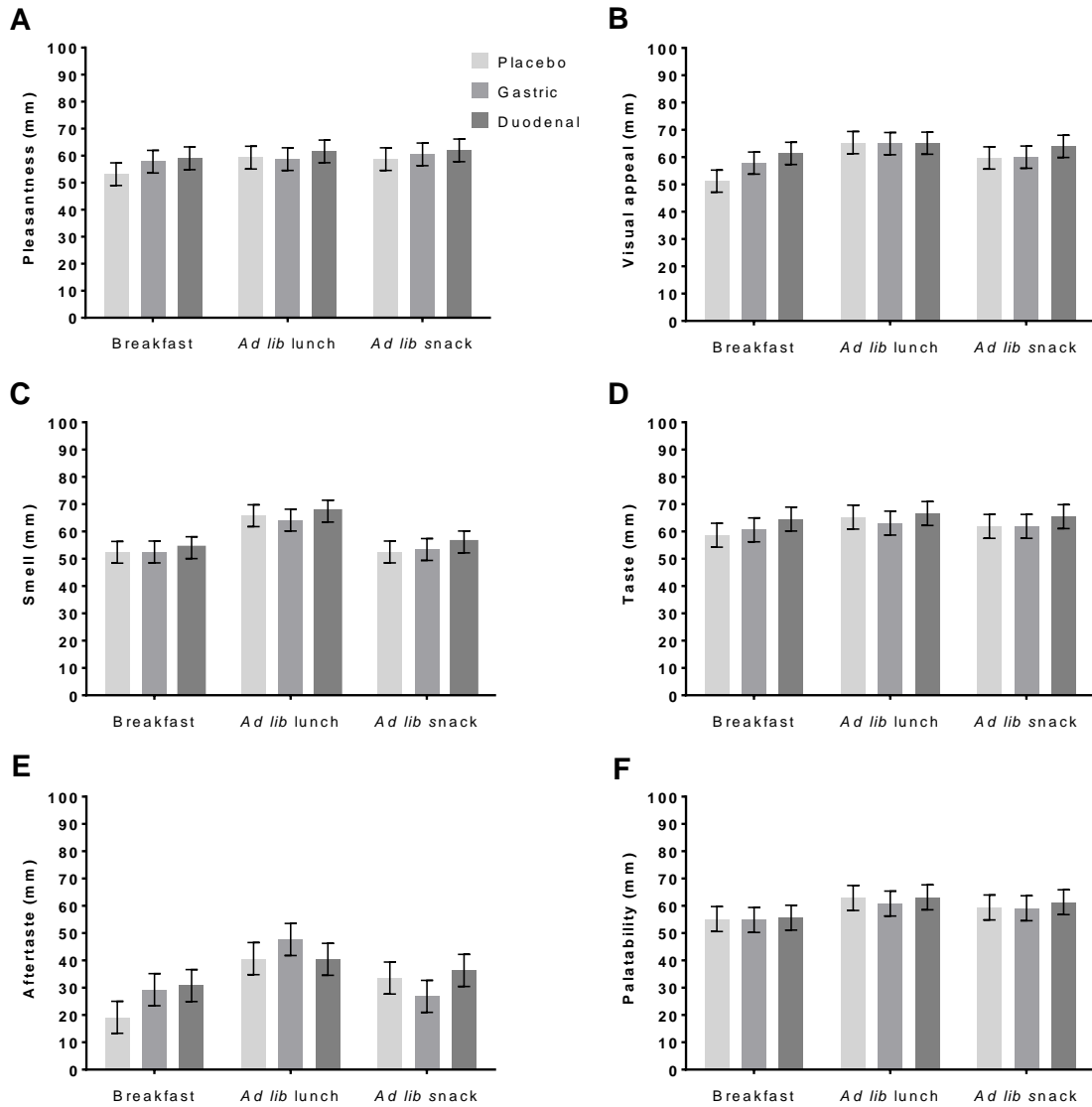
52

53

54

55

**Supplemental Figure 3** VAS ratings of (A) energetic and (B) relaxed following administration of a control (Placebo) or Amarasate® targeted to either the small intestine (Duodenal) or stomach (Gastric) using delayed-release or standard capsules, respectively. Arrows indicate capsule administration; grey bars indicate the time allowed for the 2 MJ fixed energy breakfast and the *ad libitum* lunch and snack. Analysis was conducted using the mixed procedure (SAS 9.4) with treatment, time, visit number and treatment order as factors. A significant effect of treatment ( $p < 0.05$ ) was observed for energetic. Fisher's LSD *post hoc* pairwise comparisons: gastric v placebo ( $*p < 0.05$ ); duodenal v placebo ( $^{\wedge}p < 0.05$ ,  $^{\wedge\wedge}p < 0.01$ ,  $^{\wedge\wedge\wedge}p < 0.001$ ). Histograms show effect of treatment on VAS AUC<sub>0-300 min</sub> for each vitality scale from 0 to 300 min. Analysis was conducted using the mixed procedure (SAS 9.4) with treatment, visit number and treatment order as factors. A significant effect of treatment was observed for energetic ( $p = 0.017$ ), with letters denoting significantly ( $p < 0.05$ ) different means. Values are means  $\pm$  SEM;  $n = 19$ . *Ad lib*, *ad libitum*

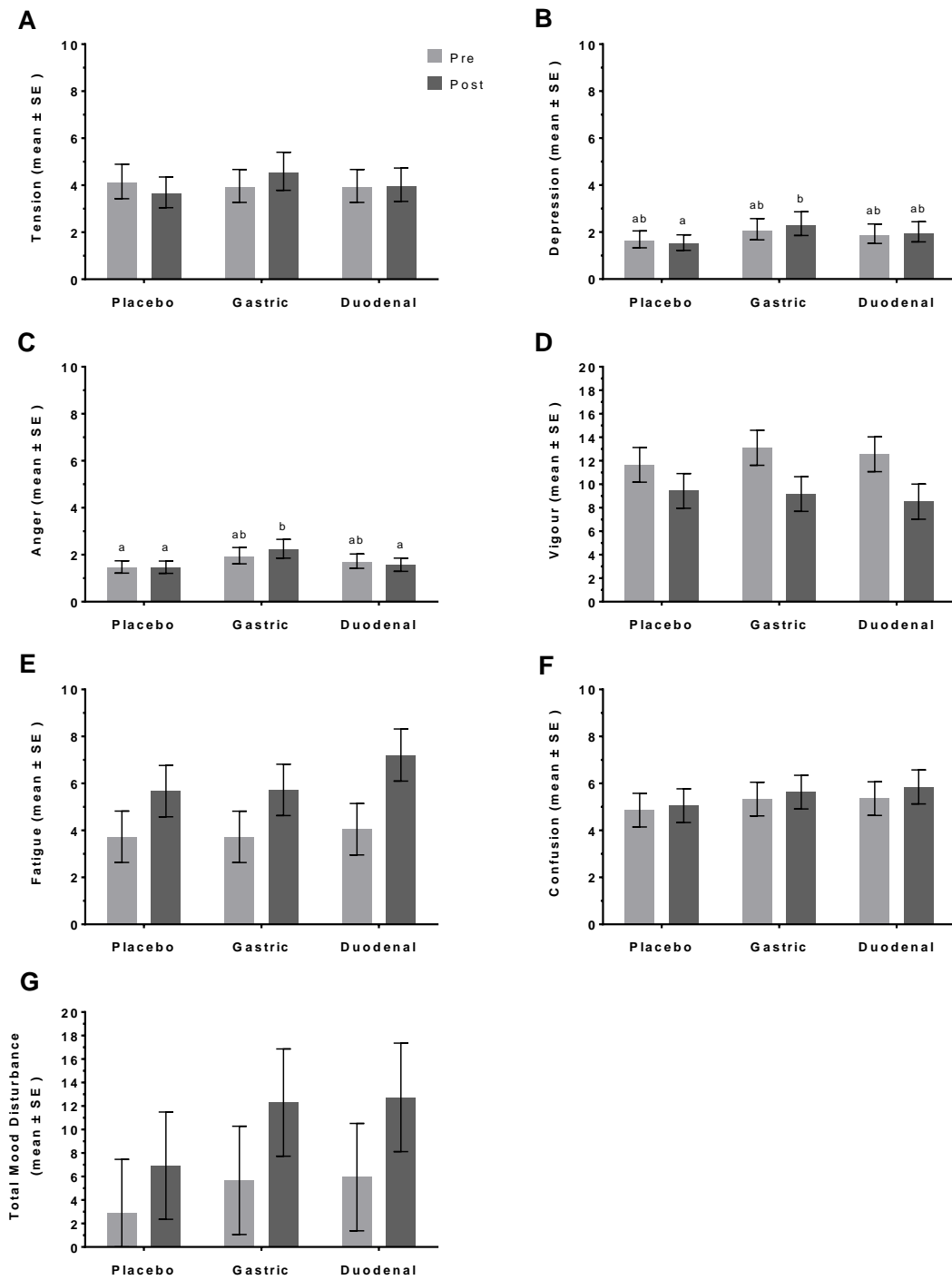


56  
 57 **Supplemental Figure 4** VAS ratings of (A) pleasantness, (B) visual appeal, (C) smell, (D) taste, (E)  
 58 aftertaste, and (F) overall palatability obtained after the 2 MJ fixed energy breakfast (Breakfast) and the  
 59 *ad libitum* lunch (*Ad lib lunch*) or snack (*Ad lib snack*). Treatments comprised administration of a vehicle  
 60 control (Placebo) or Amarasate® targeted to either the small intestine (Duodenal) or stomach (Gastric)  
 61 using delayed-release or standard capsules, respectively. Analysis was conducted using the mixed  
 62 procedure (SAS 9.4) with treatment, visit number and meal (breakfast, *ad lib lunch* and *ad lib snack*) as  
 63 factors. No significant effect of treatment was seen for any measure. Values are means  $\pm$  SEM; n = 19. *Ad*  
 64 *lib, ad libitum*.

65

66

67



68  
69  
70  
71  
72  
73  
74  
75  
76  
77  
78  
79

**Supplemental Figure 5** Effect of treatment on changes in mood state assessed using the Profile of Mood States (POMS) questionnaire subscales (A) Tension-Anxiety, (B) Depression-Dejection, (C) Anger-Hostility, (D) Vigor-Activity, (E) Fatigue-Inertia, (F) Confusion-Bewilderment, and the computed (G) total mood disturbance. Participants were asked to rate “how are you feeling right now?”. The questionnaire was administered 1 h before (Pre, T = -60 min) receiving the treatment and repeated at T = 270 min (Post). Treatments comprised administration of a vehicle control (Placebo) or Amarasate® targeted to either the small intestine (Duodenal) or stomach (Gastric) using delayed-release or standard capsules, respectively. Analysis was conducted using the mixed procedure (SAS 9.4) with treatment, visit number and time (pre/post) as factors. A significant effect of treatment was observed for B and C ( $p < 0.05$ ) only. Letters denote significantly ( $p < 0.05$ ) different means using Fisher’s LSD *post hoc* pairwise comparisons. Values are means ± SEM; n = 19.