

Appendix S1, Supplemental material for the manuscript:

“COVID-19 Due to Wild-Type SARS-CoV-2 More Prevalent in Adolescents and Youth than in Older Adults Based on 19 US States in Fall 2020 Prior to Vaccine Availability”

by B. Romain, M. Schneiderman, A. Geliebter

### **Methodological Details**

This supplementary material is provided by the authors to give readers additional source information about the data used in this study.

#### **S1.1. Case Data by State Websites:**

(i) Alaska: <https://experience.arcgis.com/experience/2d19dc2b5c7e4b399ff6495a8950493d/>

[Retrieved Nov. 1, 2020]

(ii) Colorado: <https://covid19.colorado.gov/data> [Retrieved Oct. 23, 2020]

(iii) Michigan: <https://www.mistartmap.info/compare/age-group> [Retrieved Nov. 18, 2020]

(iv) Montana: <https://dphhs.mt.gov/publichealth/cdepi/diseases/coronavirusmt/demographics>

[Retrieved Oct. 24, 2020]

(v) Nevada: <https://nvhealthresponse.nv.gov> [Retrieved Oct. 31, 2020]

(vi) New Mexico: <https://cvprovider.nmhealth.org/public-dashboard.html#> [Retrieved Oct. 24, 2020]

(vii) North Dakota: <https://www.health.nd.gov/diseases-conditions/coronavirus/north-dakota-coronavirus-cases> [Retrieved October 24, 2020]

(viii) Oregon:

<https://public.tableau.com/app/profile/oregon.health.authority.covid.19/viz/OregonCOVID-19CaseDemographicsandDiseaseSeverityStatewide/DemographicData> [Retrieved Oct. 31, 2020]

(ix) Pennsylvania: <https://experience.arcgis.com/experience/ed2def13f9b045eda9f7d22dbc9b500e>  
[Retrieved Oct. 31, 2020]

(x) South Carolina: <https://scdhec.gov/covid19/south-carolina-county-level-data-covid-19>  
[Retrieved May 15, 2021]

(xi) South Dakota: <https://doh.sd.gov/news/coronavirus.aspx> [Retrieved Oct. 24, 2020]

*Appendix S1, Supplement to: COVID-19 Due to Wild-Type SARS-CoV-2*

(xii) Tennessee: <https://www.tn.gov/content/tn/health/cedep/ncov/data.html> [Retrieved Nov. 12, 2020]

(xiii) Wisconsin: <https://www.dhs.wisconsin.gov/covid-19/cases.htm#by%20age> [Retrieved Oct. 24, 2020]

(xiv) Alabama: <https://bamatracker.com/chart/caseages> [Retrieved Nov. 14, 2020]

(xv) Florida: <https://floridahealthcovid19.gov/> [Retrieved November 13, 2020]

(xvi) Oklahoma: [https://coronavirus.health.ok.gov/sites/g/files/gmc786/f/2020.10.23\\_weekly\\_epi\\_report.pdf](https://coronavirus.health.ok.gov/sites/g/files/gmc786/f/2020.10.23_weekly_epi_report.pdf) [Retrieved Oct. 23, 2020]

(xvii) Rhode Island: <https://ri-department-of-health-covid-19-case-data-rihealth.hub.arcgis.com/#age> [Retrieved October 25, 2020]

(xviii) Minnesota: <https://www.health.state.mn.us/diseases/coronavirus/situation.html#ageg1> [Retrieved Oct. 24, 2020]

(xix) Missouri: <https://health.mo.gov/living/healthcondiseases/communicable/novel-coronavirus/data/public-health/demographics.php> [Retrieved Oct. 24, 2020]

**S1.2. Demographic Data by Age and by State websites:**

(i) Alaska: <https://live.laborstats.alaska.gov/pop/>

<https://demography.dola.colorado.gov/population/data/sya-regions/>

(ii) Colorado: Colorado State Demography Office, Colorado Department of Local Affairs,

<https://demography.dola.colorado.gov/population/data/sya-regions/>

(iii) Michigan: <https://censusreporter.org/profiles/04000US26-michigan/>

(iv) Montana: <https://censusreporter.org/profiles/04000US30-montana/>

(v) Nevada: <https://censusreporter.org/profiles/04000US32-nevada/>

(vi) New Mexico:

[https://censusreporter.org/data/table/?table=B01001&geo\\_ids=04000US35&primary\\_geo\\_id=04000US35](https://censusreporter.org/data/table/?table=B01001&geo_ids=04000US35&primary_geo_id=04000US35)

(vii) North Dakota: <https://censusreporter.org/profiles/04000US38-north-dakota/>

(viii) Oregon: <https://censusreporter.org/profiles/04000US41-oregon/>

(ix) Pennsylvania: <https://censusreporter.org/profiles/04000US42-pennsylvania/>

- (x) South Carolina <https://censusreporter.org/profiles/04000US45-south-carolina/>
- (xi) South Dakota: <https://www.sdstate.edu/sociology-rural-studies/census-data-center/population-change>
- (xii) Tennessee: <https://www.tn.gov/content/dam/tn/health/documents/population/TN-Population-by-AgeGrp-Sex-Race-Ethnicity-2019.pdf>
- (xiii) Wisconsin: <https://censusreporter.org/profiles/04000US55-wisconsin/>
- (xiv) Alabama: <https://censusreporter.org/profiles/04000US01-alabama/>
- (xv) Florida: [http://edr.state.fl.us/Content/populationdemographics/data/Pop\\_Census\\_Day.pdf](http://edr.state.fl.us/Content/populationdemographics/data/Pop_Census_Day.pdf)
- (xvi) Oklahoma: <https://censusreporter.org/profiles/04000US40-oklahoma/>
- (xvii) Rhode Island: <https://censusreporter.org/profiles/04000US44-rhode-island/>
- (xviii) Minnesota: <https://censusreporter.org/profiles/04000US27-minnesota/>
- (xix) Missouri: <https://healthapps.dhss.mo.gov/MoPhims/QueryBuilder?qbc=PNM&q=1&m=1>

**S1.3. New York Times Websites Indicating Surges by State:**

- <https://www.nytimes.com/interactive/2021/us/alaska-covid-cases.html>
- <https://www.nytimes.com/interactive/2021/us/colorado-covid-cases.html>
- <https://www.nytimes.com/interactive/2021/us/michigan-covid-cases.html>
- <https://www.nytimes.com/interactive/2021/us/montana-covid-cases.html>
- <https://www.nytimes.com/interactive/2021/us/nevada-covid-cases.html>
- <https://www.nytimes.com/interactive/2021/us/new-mexico-covid-cases.html>
- <https://www.nytimes.com/interactive/2021/us/north-dakota-covid-cases.html>
- <https://www.nytimes.com/interactive/2021/us/oregon-covid-cases.html>
- <https://www.nytimes.com/interactive/2021/us/pennsylvania-covid-cases.html>
- <https://www.nytimes.com/interactive/2021/us/south-carolina-covid-cases.html>
- <https://www.nytimes.com/interactive/2020/us/south-dakota-coronavirus-cases.html>

<https://www.nytimes.com/interactive/2020/us/tennessee-coronavirus-cases.html>

<https://www.nytimes.com/interactive/2021/us/wisconsin-covid-cases.html>

<https://www.nytimes.com/interactive/2021/us/alabama-covid-cases.html>

<https://www.nytimes.com/interactive/2020/us/florida-coronavirus-cases.html>

<https://www.nytimes.com/interactive/2021/us/oklahoma-covid-cases.html>

<https://www.nytimes.com/interactive/2021/us/rhode-island-covid-cases.html>

<https://www.nytimes.com/interactive/2021/us/minnesota-covid-cases.html>

<https://www.nytimes.com/interactive/2020/us/missouri-coronavirus-cases.html>

Since the data on the websites above are updated on a daily basis, we are including below in S1.4 the tables of the data the way they appeared on the websites when we accessed them. These provide the numbers we used in our calculations.

#### **S1.4. List of Supplemental Tables.**

- 1) Table A. Alaska COVID-19 Cases by Age (as of October 31, 2020)
- 2) Table B. Colorado COVID-19 Cases by Age (as of Oct. 22, 2020)
- 3) Table C. Michigan COVID-19 Cases by Age (as of Nov. 17, 2020)
- 4) Table D. Montana COVID-19 Cases by Age (as of Oct. 23, 2020)
- 5) Table E. Nevada COVID-19 Cases by Age (as of October 30, 2020)
- 6) Table F. New Mexico COVID-19 Cases by Age (as of Oct. 23, 2020)
- 7) Table G. North Dakota COVID-19 Cases by Age (as of October 23, 2020)
- 8) Table H. Oregon COVID-19 Cases by Age (as of October 30, 2020)
- 9) Table I. Pennsylvania COVID-19 Cases by Age (as of October 30, 2020)
- 10) Table J. South Carolina COVID-19 Cases by Age (as of Dec. 5, 2020)
- 11) Table K. South Dakota COVID-19 Cases by Age (as of Oct. 23, 2020)
- 12) Table L. Tennessee COVID-19 Cases by Age (as of November 11, 2020)
- 13) Table M. Wisconsin COVID-19 Cases by Age (as of Oct. 23, 2020)
- 14) Table N. Alabama COVID-19 Cases by Age (as of November 13, 2020)
- 15) Table O. Florida COVID-19 Cases by Age (as of Nov. 12, 2020)

*Appendix S1, Supplement to: COVID-19 Due to Wild-Type SARS-CoV-2*

16) Table P. Oklahoma COVID-19 Cases by Age (as of Oct. 22, 2020)

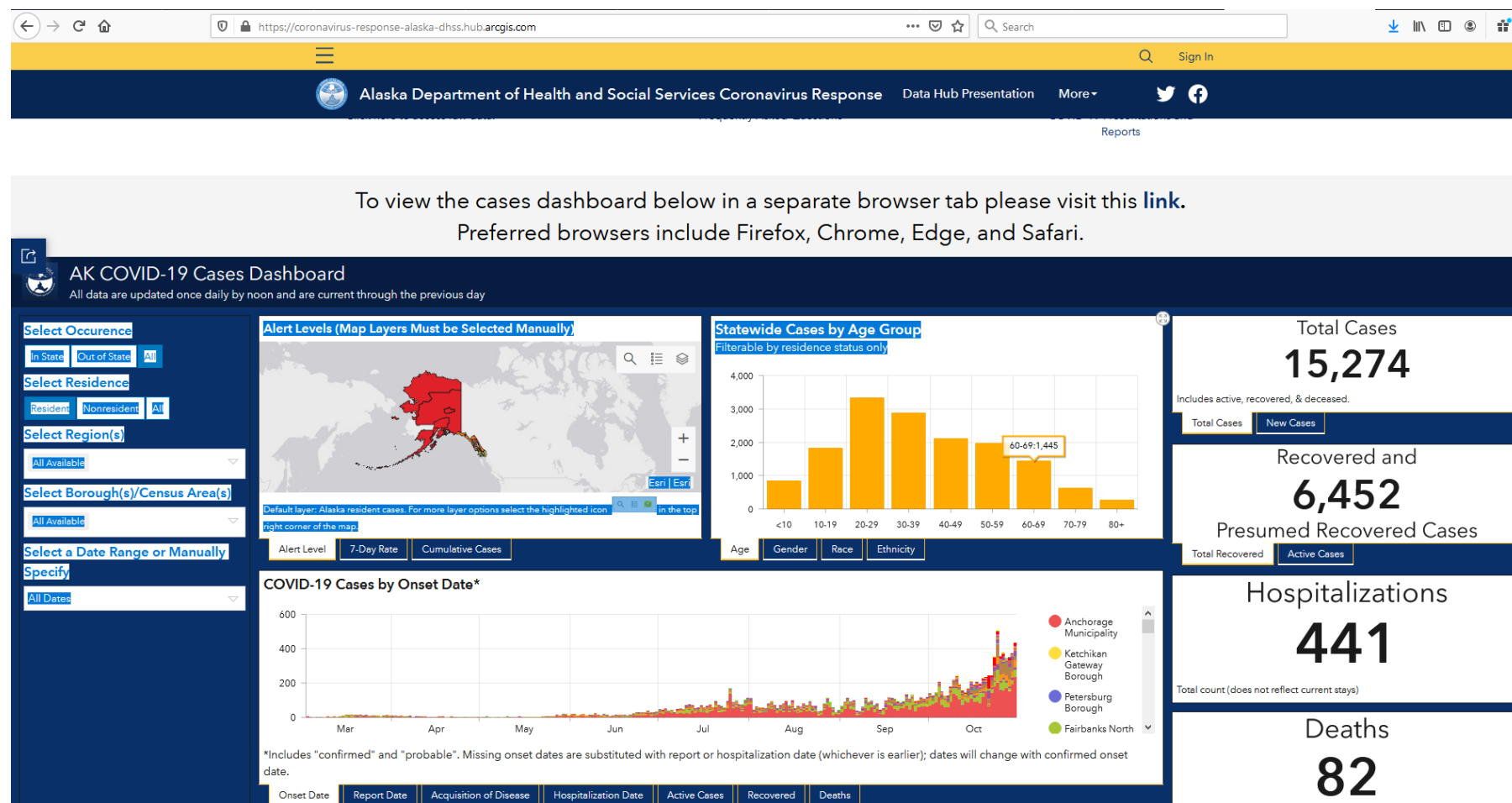
17) Table Q. Rhode Island COVID-19 Cases by Age (as of October 24, 2020)

18) Table R. Minnesota COVID-19 Cases by Age (as of Oct. 23, 2020)

19) Table S. Missouri COVID-19 Cases by Age (as of Oct. 23, 2020)

Appendix S1, Supplement to: COVID-19 Due to Wild-Type SARS-CoV-2

**Table A. Alaska COVID-19 Cases by Age (as of October 31, 2020)**



Source: Alaska Department of Health and Social Services Coronavirus Response Hub, AK COVID—19 Cases Dashboard <https://experience.arcgis.com/experience/2d19dc2b5c7e4b399ff6495a8950493d/>

**Table B. Colorado COVID-19 Cases by Age as of 10/22/2020**

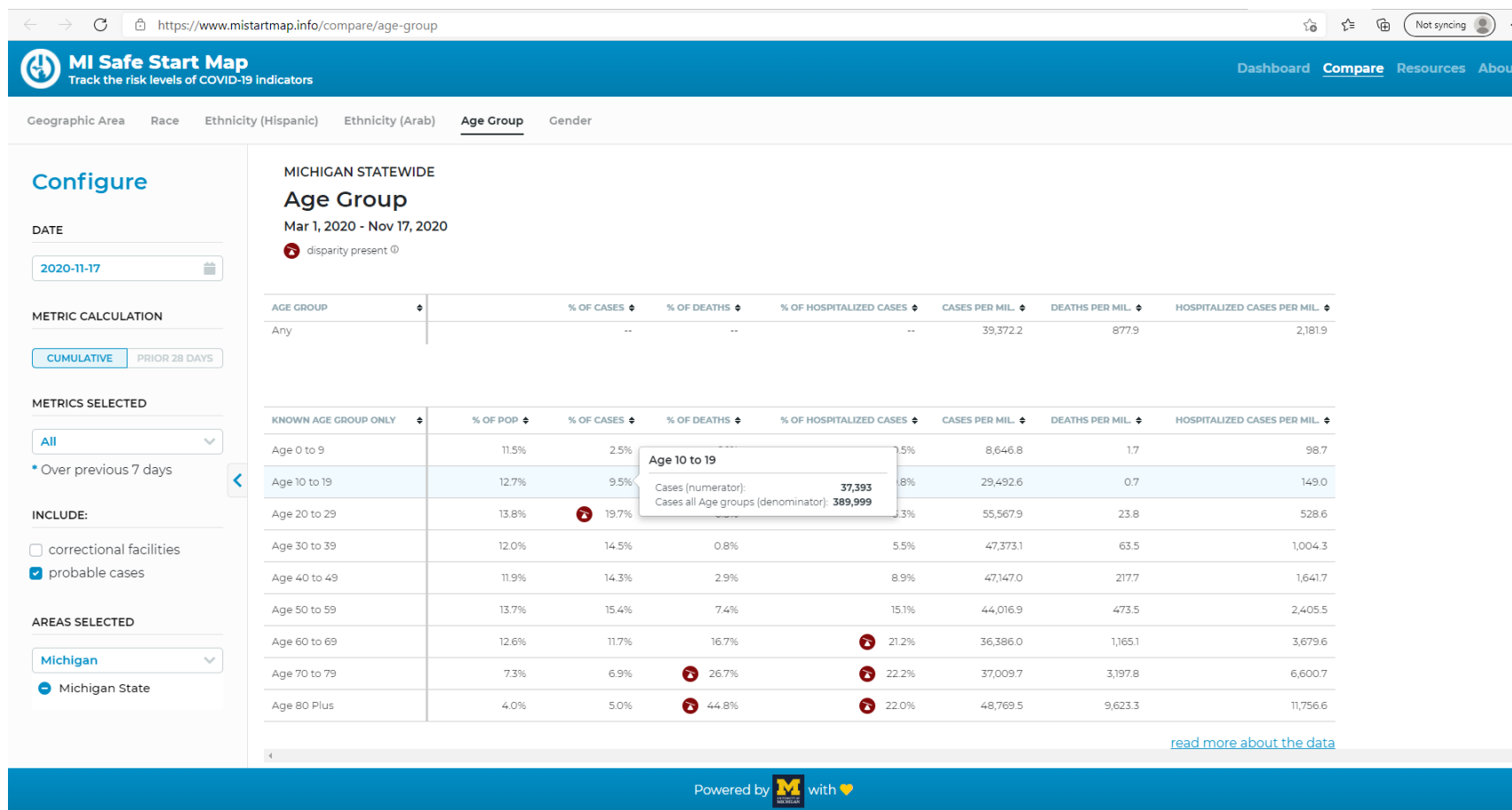
Age	Proportion of Cases	Total Case Count
0-9	0.038	3480
10-19	0.108	9890
20-29	0.223	20421
30-39	0.175	16025
40-49	0.154	14102
50-59	0.133	12179
60-69	0.085	7784
70-79	0.046	4212
80+	0.038	3480

Total cumulative cases: 91,572

Source: Colorado Department of Public Health and Environment, “CDPHE COVID19 State-Level Expanded Case Data” (as of 10/22/2020)

<https://covid19.colorado.gov/data>

**Table C. Michigan COVID-19 Cases by Age (as of Nov. 17, 2020)**



Source: MI Safe Start Map, University of Michigan

<https://www.mistartmap.info/compare/age-group>



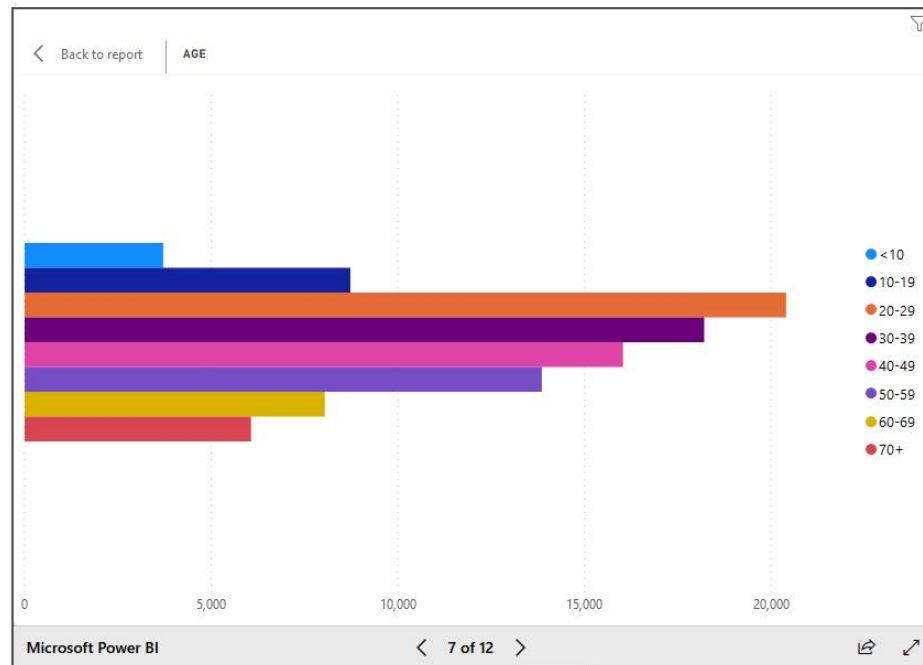
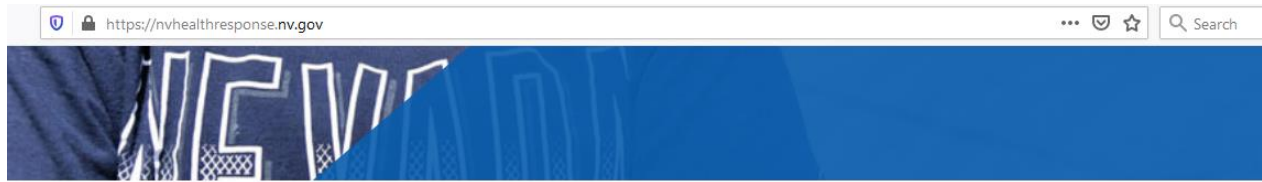
**Table D. Montana COVID-19 Cases by Age (as of 10/23/2020)**

<u>Age Group</u>	<u>Number of Cases</u> (percent of total)
0-9 years	1,148 (4%)
10-19 years	3,001 (11%)
20-29 years	5,452 (21%)
30-39 years	4,263 (16%)
40-49 years	3,514 (13%)
50-59 years	3,457 (13%)
60-69 years	2,883 (11%)
70-79 years	1,714 (6%)
80-89 years	796 (3%)
90-99 years	257 (1%)
100+	18 (<1%)
Total Cases:	26,503

Source: Montana Department of Public Health and Human Services

<https://dphhs.mt.gov/publichealth/cdepi/diseases/coronavirusmt/demographics>

**Table E. Nevada COVID-19 Cases by Age (as of October 30, 2020)**



Total cases: 101,235

The comparison of interest is between the 10-19-year-olds (8727 cases) and the older adults (60-69-year-olds: 8042 cases; 70+ year olds: 6065 cases).

Source: Nevada Department of Health  
<https://nvhealthresponse.nv.gov>

**Table F. New Mexico COVID-19 Cases by Age (as of 10/23/2020)**

**Statewide Age Breakdown**

<b>Age</b>	<b>Number of Cases</b>
0-9	2120
10-19	4513
20-29	7987
30-39	7290
40-49	6145
50-59	5339
60-69	3594
70-79	1810
80-89	975
90+	347
Total:	4012

Source: New Mexico Department of Health  
<https://cvprovider.nmhealth.org/public-dashboard.html#>

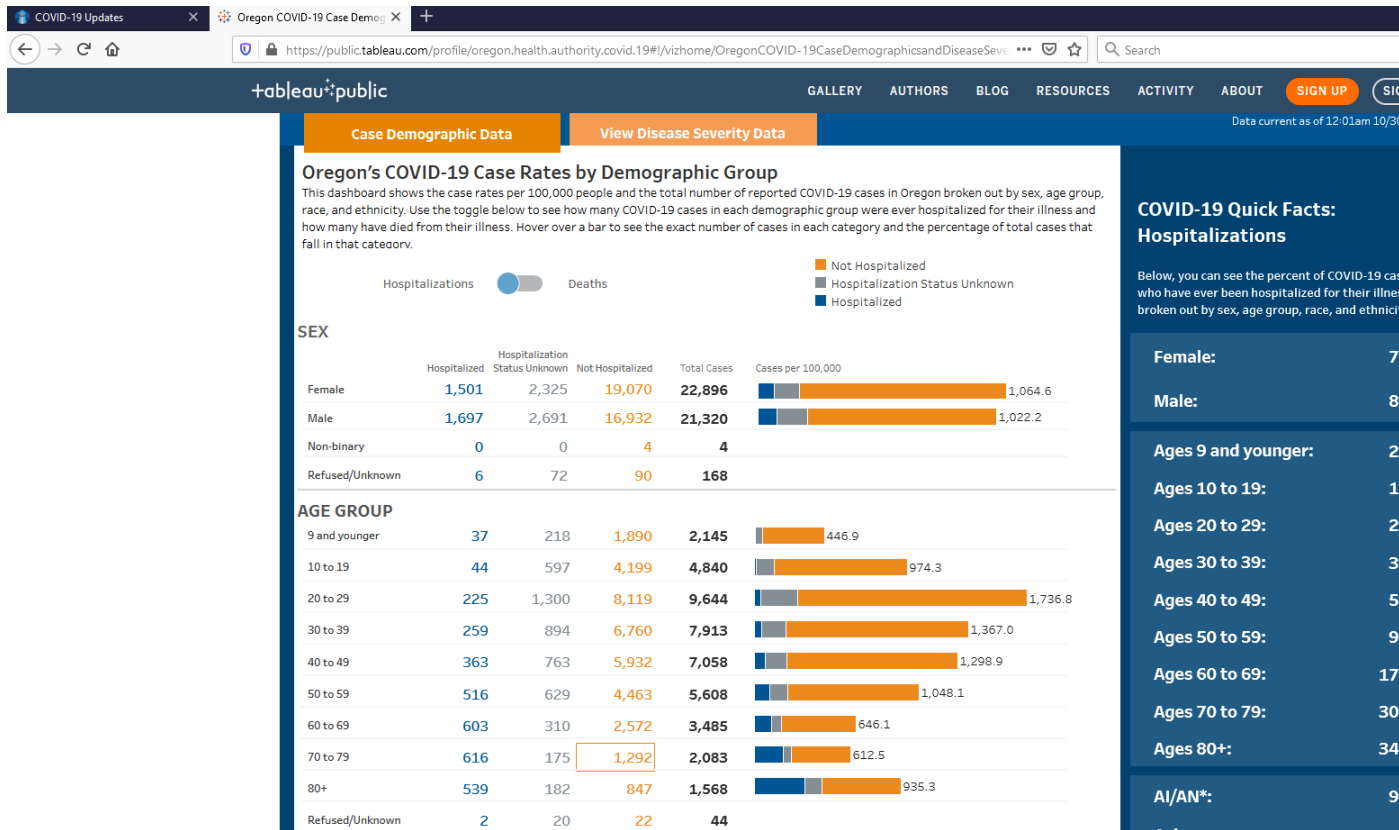
**Table G. North Dakota COVID-19 Cases by Age (as of October 23, 2020)**

Age	Total Cases
0-9	1549
10-19	4658
20-29	8814
30-39	5932
40-49	4486
50-59	4292
60-69	3490
70-79	1859
80+	1794
Total	35,080

Source: North Dakota Department of Health

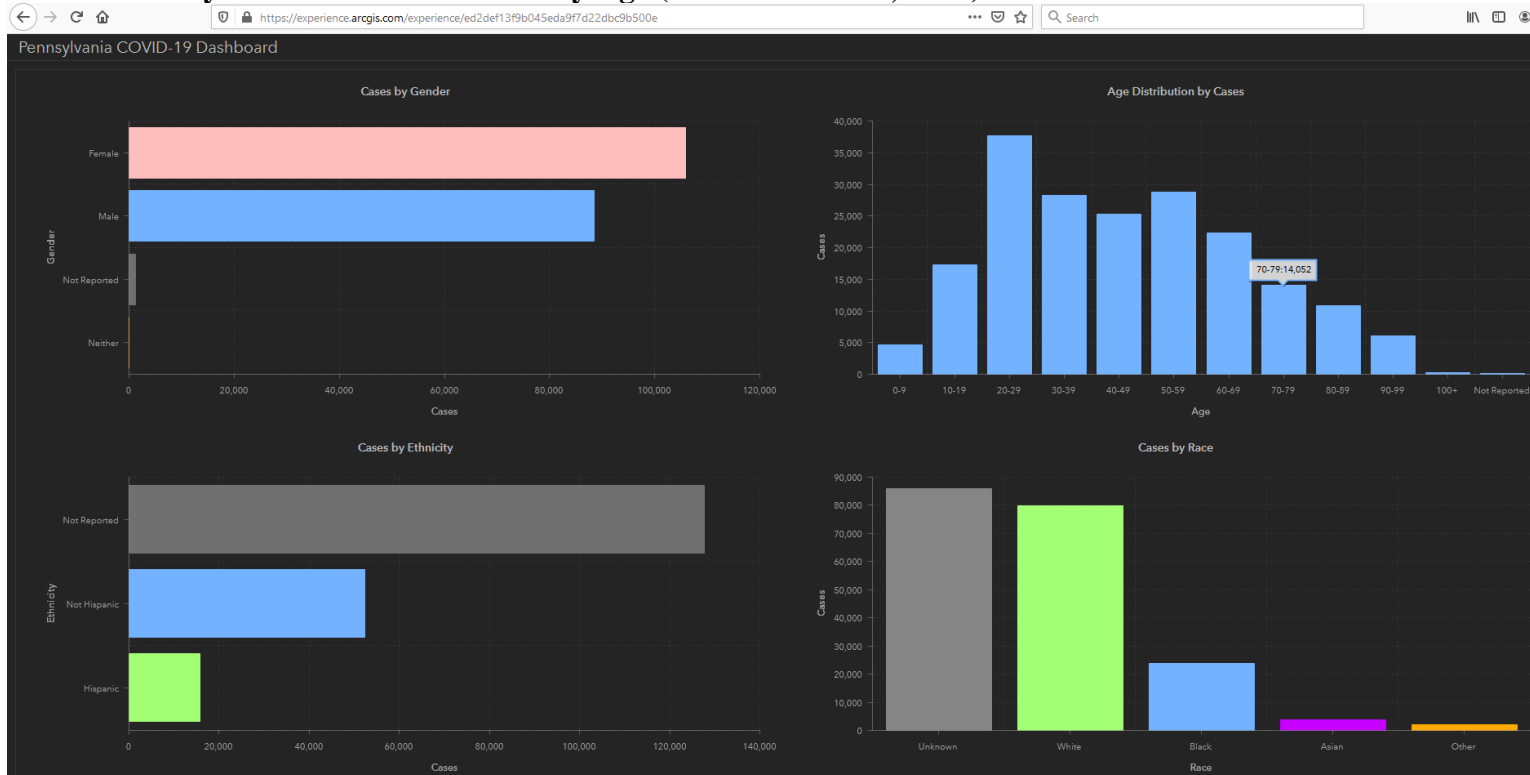
<https://www.health.nd.gov/diseases-conditions/coronavirus/north-dakota-coronavirus-cases>

**Table H. Oregon COVID-19 Cases by Age (as of October 30, 2020)**



Source: Oregon Health Authority (OHA) and the OHA Public Health Division  
<https://public.tableau.com/app/profile/oregon.health.authority.covid.19/viz/OregonCOVID-19CaseDemographicsandDiseaseSeverityStatewide/DemographicData>

**Table I. Pennsylvania COVID-19 Cases by Age (as of October 30, 2020)**



← → ↻ <https://data.pa.gov/Health/COVID-19-Aggregate-Cases-Current-Daily-County-Heal/f72v-r42c/data>

**opendataPA** Commonwealth of Pennsylvania

Home Data Catalog governor.pa.gov COVID-19 Spatial Data Other

COVID-19 Aggregate Cases Current Daily County Health

Based on [COVID-19 Aggregate Cases Current Daily County Health](#)

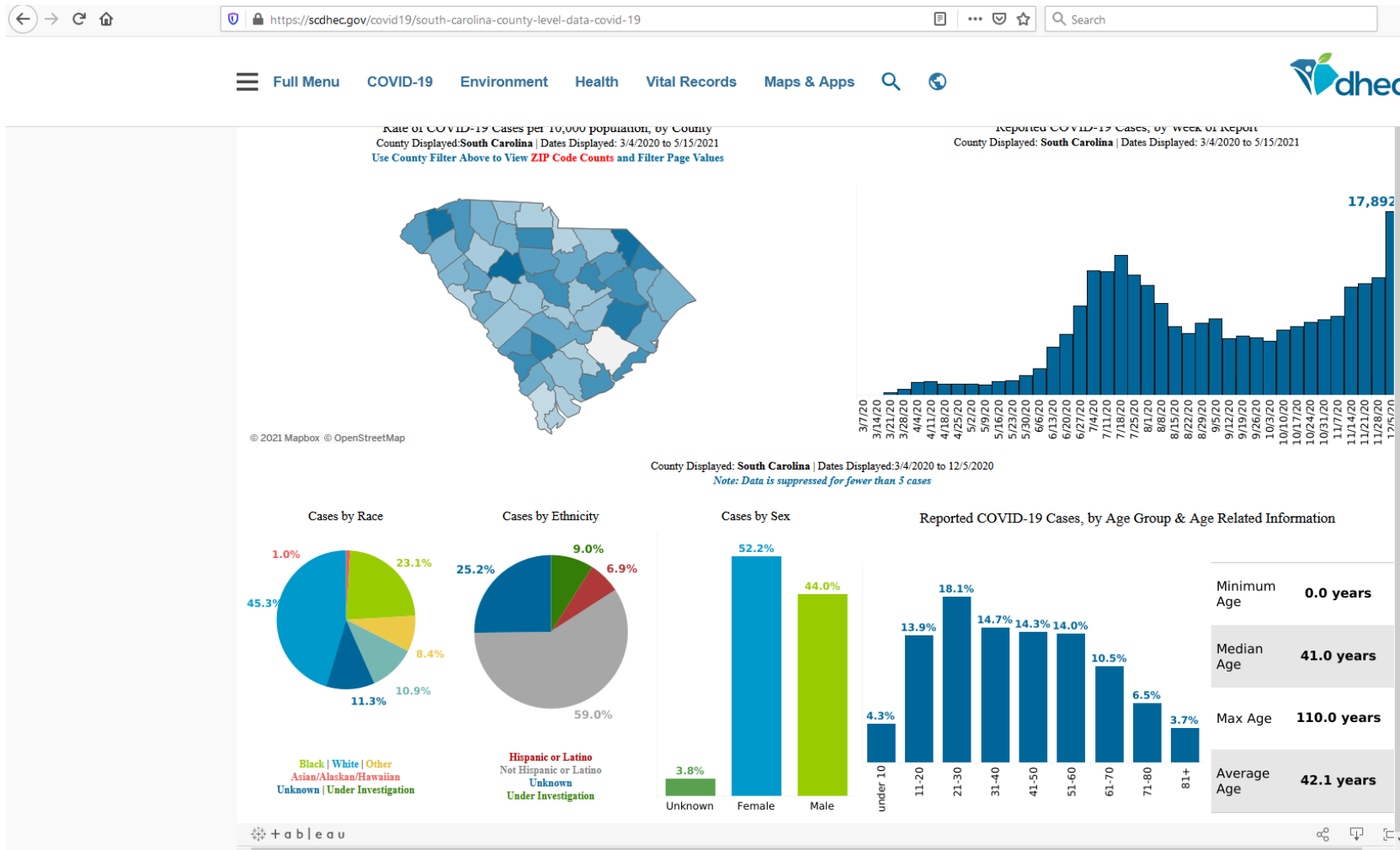
This dataset contains aggregate COVID-19 case counts and rates by date of first report for all counties in Pennsylvania and for the state as a whole. Counts

Jurisdiction	Date	New Cases	7-day Averag...	Cumulative c...	Population (...	New Case Rate	7-Day Averag...	Cumulative ...	County FIPS ...	Longitude	Latitude	Georeferenc...
Pennsylvania	10/30/2020	2,691	2,226.3	209,822	12,801,989	21	17.4	1,639	42000	-75.167756	39.346129	POINT (-75.16775...

Total cases 209,822.

Source: Pennsylvania Department of Health, <https://experience.arcgis.com/experience/ed2def13f9b045eda9f7d22dbc9b500e>

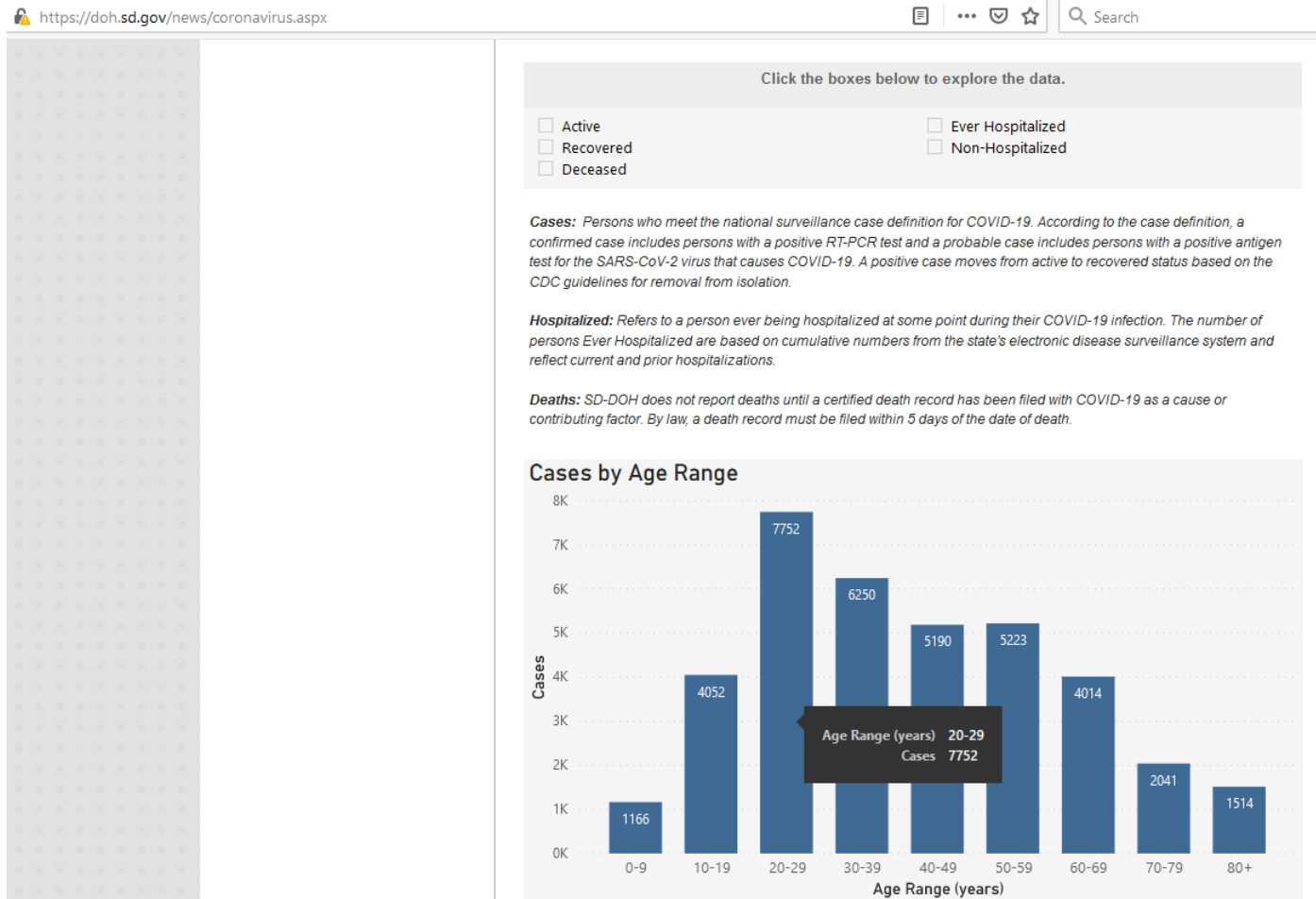
**Table J. South Carolina COVID-19 Cases by Age (as of Dec. 5, 2020)**



Total cases: 17,892

Source: South Carolina Department of Health and Environmental Control <https://scdhec.gov/covid19/south-carolina-county-level-data-covid-19>

**Table K. South Dakota COVID-19 Cases by Age (as of Oct. 23, 2020)**



Total cases: 37,262

Source: South Dakota Department of health  
<https://doh.sd.gov/news/coronavirus.aspx>



**Table L. Tennessee COVID-19 Cases by Age (as of November 11, 2020)**

Age	Total Cases
0-10	14,363
11-20	38,925
21-30	57,829
31-40	46,794
41-50	43,426
51-60	39,243
61-70	27,287
71-80	16,316
81+	8,801
Pending	397
Total	293,381

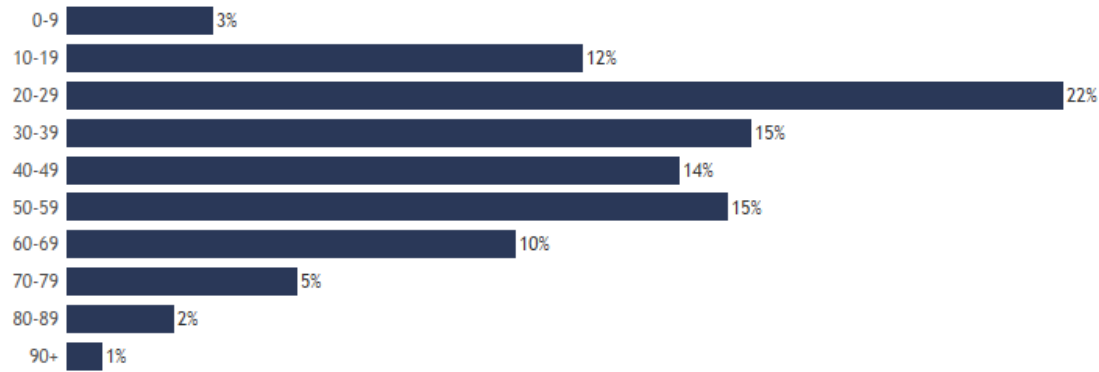
Source: Tennessee Department of Health, “Age Dataset” in <https://www.tn.gov/health/cedep/ncov/data/downloadable-datasets.html>

**Table M. Wisconsin COVID-19 Cases by Age (as of Oct. 23, 2020)**

Percent of confirmed COVID-19 cases by age group

Updated: 10/23/2020 (Total: 190,478)

- View cases by:
- Age group (years)
  - Gender
  - Race
  - Ethnicity
  - Region
- Select case confirmation status:
- Confirmed
  - Probable
  - Confirmed and probable



Source: Wisconsin Department of Health Services  
<https://www.dhs.wisconsin.gov/covid-19/cases.htm#by%20age>

**Table N. Alabama COVID-19 Cases by Age (as of November 13, 2020)**



Age	Cumulative Cases
0-4	3,519
5-17	15,316
18-24	25,413
25-49	68,497
50-64	37,344
65+	30,186

Source: Alabama Department of Public Health COVID-19 Dashboard Hub  
<https://bamatracker.com/chart/caseages>

Table O. Florida COVID-19 Cases by Age (as of Nov. 12, 2020)

## COVID-19: characteristics of 858,585 Florida resident cases

Data through Nov 12, 2020 verified as of Nov 13, 2020 at 09:25 AM

Data in this report are provisional and subject to change.

Age group	Cases	Hospitalizations	Deaths	Gender	Cases
0-4 years	14,429   2%	336   1%	0   0%	Female	441,752   51%
5-14 years	39,056   5%	310   1%	5   0%	Male	412,389   48%
15-24 years	140,515   16%	1,376   3%	32   0%	Unknown	4,444   1%
25-34 years	156,421   18%	2,870   6%	101   1%	<b>Total</b>	<b>858,585</b>
35-44 years	135,609   16%	4,282   8%	302   2%		
45-54 years	133,416   16%	6,404   12%	714   4%		
55-64 years	111,472   13%	9,001   17%	1,920   11%		
65-74 years	67,147   8%	10,310   20%	3,726   21%		
75-84 years	38,283   4%	9,751   19%	5,096   29%		
85+ years	21,217   2%	6,895   13%	5,549   32%		
Unknown	1,020   0%	7   0%	0   0%		
<b>Total</b>	<b>858,585</b>	<b>51,542</b>	<b>17,445</b>		

Ethnicity	Cases	Hospitalizations	Deaths
Hispanic	254,865   30%	14,431   28%	4,418   25%
Non-Hispanic	384,010   45%	34,293   67%	11,754   67%
Unknown	219,710   26%	2,818   5%	1,273   7%
<b>Total</b>	<b>858,585</b>	<b>51,542</b>	<b>17,445</b>

Race and ethnicity	Cases	Hospitalizations	Deaths
White	418,331   49%	31,824   62%	12,233   70%
Hispanic	168,168   20%	10,125   20%	3,513   20%
Non-Hispanic	223,614   26%	20,647   40%	8,124   47%
Unknown	26,549   3%	1,052   2%	596   3%
Black	125,921   15%	11,771   23%	3,245   19%
Hispanic	6,239   1%	493   1%	128   1%
Non-Hispanic	109,768   13%	10,963   21%	2,990   17%
Unknown	9,914   1%	315   1%	127   1%
Other race	117,325   14%	6,293   12%	1,384   8%
Hispanic	59,750   7%	3,460   7%	658   4%
Non-Hispanic	40,638   5%	2,526   5%	592   3%
Unknown	16,937   2%	307   1%	134   1%
Unknown race	197,008   23%	1,654   3%	583   3%
Hispanic	20,708   2%	353   1%	119   1%
Non-Hispanic	9,990   1%	157   0%	48   0%
Unknown	166,310   19%	1,144   2%	416   2%
<b>Total</b>	<b>858,585</b>	<b>51,542</b>	<b>17,445</b>

**Hospitalization** counts include anyone who was hospitalized at some point during their illness. It does not reflect the number of people currently hospitalized. **Other race** includes any person with a race of American Indian/Alaskan native, Asian, native Hawaiian/Pacific Islander, or other.

Source: Florida Department of Health, <https://Floridahealthcovid19.gov/>

**Table P. Oklahoma COVID-19 Cases by Age (as of Oct. 22, 2020)**

[https://coronavirus.health.ok.gov/sites/g/files/gmc786/f/2020.10.23\\_weekly\\_epi\\_report.pdf](https://coronavirus.health.ok.gov/sites/g/files/gmc786/f/2020.10.23_weekly_epi_report.pdf)

Automatic Zoom

**DEMOGRAPHIC INFORMATION as of October 22, 2020**

	Cases count (%) <sup>1</sup>		Deaths count (%) <sup>1</sup>		Cumulative Incidence Rate <sup>2</sup>	Cumulative Mortality Rate <sup>2</sup>
<b>Oklahoma</b>	<b>112,483</b>		<b>1221</b>		<b>2,852.7</b>	<b>31.0</b>
<b>Gender</b>						
Male	53,835	(47.9)	680	(55.7)	2,756.5	34.8
Female	58,648	(52.1)	541	(44.3)	2,947.1	27.2
<b>Age group</b>						
Under 1- 4	2,126	(1.9)	0	(0.0)	816.3	0.0
5-14	6,392	(5.7)	1	(0.1)	1,188.3	0.2
15-24	22,499	(20.0)	2	(0.2)	4,183.3	0.4
25-34	19,221	(17.1)	11	(0.9)	3,538.4	2.0
35-44	17,855	(15.9)	19	(1.6)	3,641.0	3.9
45-54	15,456	(13.7)	56	(4.6)	3,357.7	12.2
55-64	13,080	(11.6)	150	(12.3)	2,650.8	30.4
65-74	8,698	(7.7)	324	(26.5)	2,425.2	90.3
75-84	4,771	(4.2)	333	(27.3)	2,541.7	177.4
85+	2,384	(2.1)	325	(26.6)	3,257.0	444.0
Unknown	1	(0.0)				
<b>Race</b>						
American Indian or Alaska Native	11,056	(9.8)	113	(9.3)	3,599.2	36.8
Asian or Pacific Islander	3,229	(2.9)	25	(2.0)	3,646.4	28.2
Black or African American	7,734	(6.9)	76	(6.2)	2,688.4	26.4
Multiracial/Other	4,435	(3.9)	38	(3.1)	1,071.9	9.2
White	65,252	(58.0)	879	(72.0)	2,292.8	30.9
Unknown	20,777	(18.5)	90	(7.4)		
<b>Ethnicity</b>						
Hispanic or Latino	17,450	(15.5)	78	(6.4)	4,066.9	18.2
Not Hispanic or Latino	71,241	(63.3)	994	(81.4)	2,027.3	28.3
Unknown	23,792	(21.2)	149	(12.2)		

1. Percentages may not add up to 100 due to rounding.  
2. Rate per 100,000 population

COVID-19 Weekly Epidemiology Report / October 16 – October 22, 2020 / Updated October 22, 2020

Page 11 of 23

Source: Oklahoma State Department of Health

[https://coronavirus.health.ok.gov/sites/g/files/gmc786/f/2020.10.23\\_weekly\\_epi\\_report.pdf](https://coronavirus.health.ok.gov/sites/g/files/gmc786/f/2020.10.23_weekly_epi_report.pdf)

**Table Q. Rhode Island COVID-19 Cases by Age (as of October 24, 2020)**

Age	Cumulative Cases
0-4	480
5-9	531
10-14	656
15-18	1174
19-24	3522
25-29	2655
30-39	4658
40-49	4125
50-59	4175
60-69	2880
70-79	1773
80+	2364

Total cases 28,993

Source: Rhode Island Department of Health (RIDOH) Salesforce COVID-19 Case Dataset  
<https://ri-department-of-health-covid-19-case-data-rihealth.hub.arcgis.com/#age>

**Table R. Minnesota COVID-19 Cases by Age (as of Oct. 23, 2020)**

<b>Age Group</b>	<b>Number of Cases</b>
<b>0-4 years</b>	2,536
<b>5-9 years</b>	2,624
<b>10-14 years</b>	3,988
<b>15-19 years</b>	11,769
<b>20-24 years</b>	16,429
<b>25-29 years</b>	12,611
<b>30-34 years</b>	11,466
<b>35-39 years</b>	10,447
<b>40-44 years</b>	9,371
<b>45-49 years</b>	8,916
<b>50-54 years</b>	8,893
<b>55-59 years</b>	8,242
<b>60-64 years</b>	6,536
<b>65-69 years</b>	4,415
<b>70-74 years</b>	3,393
<b>75-79 years</b>	2,561
<b>80-84 years</b>	2,066
<b>85-89 years</b>	1,754
<b>90-94 years</b>	1,209
<b>95-99 years</b>	524
<b>100+ years</b>	95
<b>Unknown/missing</b>	18
<b>Total</b>	<b>129,863</b>

Source: <https://www.health.state.mn.us/diseases/coronavirus/situation.html#ageg1>

**Table S. Missouri COVID-19 Cases by Age (as of Oct. 23, 2020)**

<b>Age</b>	<b>Number of Cases</b>
0-9	3054
10-19	13637
20	3596
21	3512
22	2831
23	2655
24	2403
25	2316
26	2260
27	2243
28	2181
29	2114
30	2006
31	1942
32	1893
33	1762
34	1769
35	1761
36	1659
37	1761
38	1736
39	1761
40	1752
41	1554
42	1589
43	1659
44	1579
45	1654
46	1556
47	1620
48	1678
49	1783
50	1686
51	1704
52	1616



<b>Age</b>	<b>Number of Cases</b>
53	1619
54	1579
55	1655
56	1633
57	1677
58	1619
59	1608
60	1519
61	1477
62	1361
63	1394
64	1308
65	1188
66	1100
67	1028
68	1031
69	976
70	950
71	886
72	908
73	844
74	731
75	707
76	679
77	746
78	627
79	574
80-84	2410
85-89	1918
90+	1975
Unknown	289
Total cases: 120,298	

Source: Missouri Department of Health and Senior Services

<https://health.mo.gov/living/healthcondiseases/communicable/novel-coronavirus/cases-by-age.php>