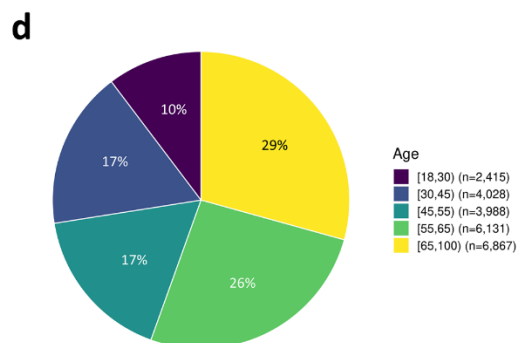
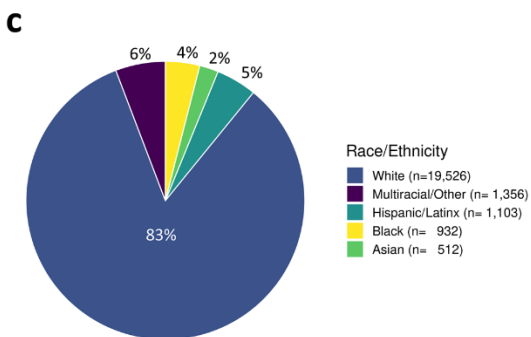
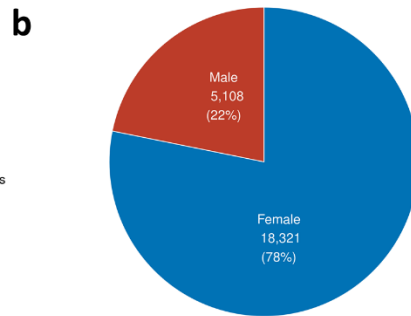
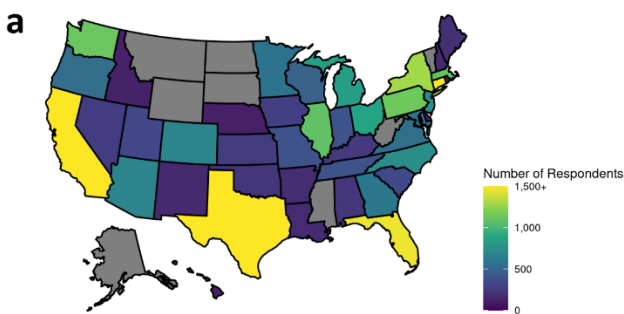


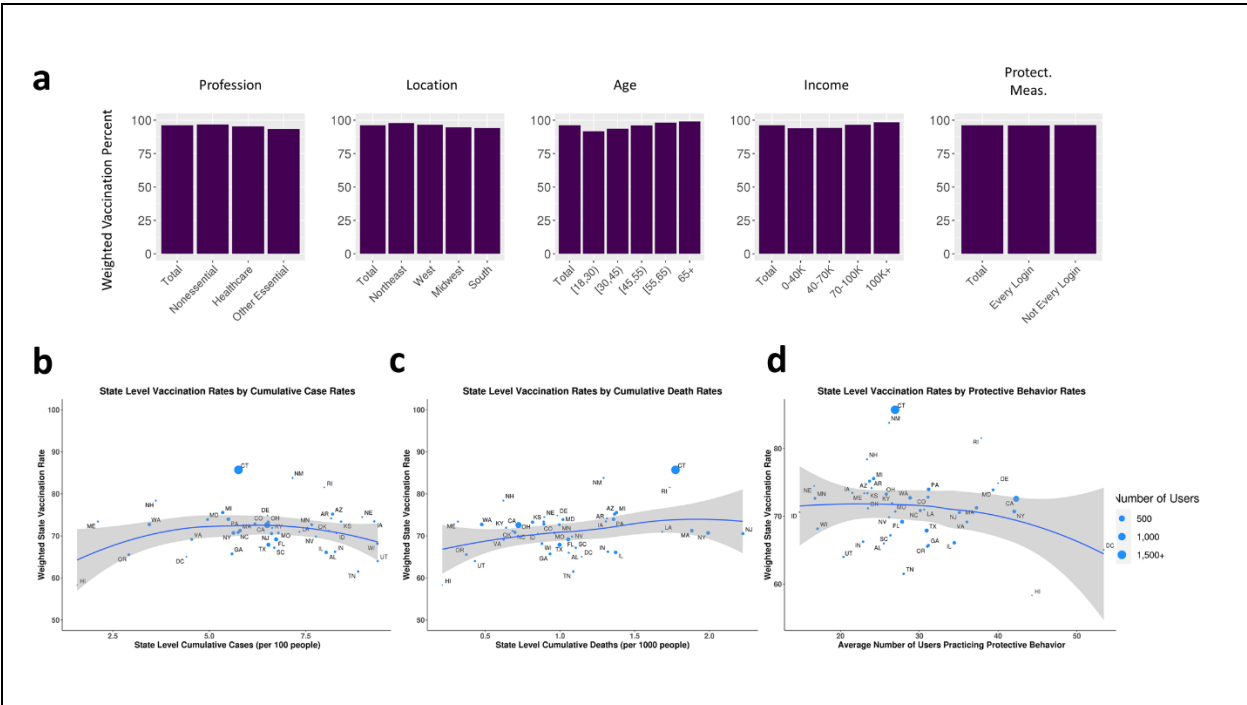
Supplementary Figure 1, HWF Vaccine Intent Demographic Distributions : Demographic break down of the HWF user base that responded to the vaccine intent question by **(a)** state, **(b)** sex, **(c)** race and **(d)** age.



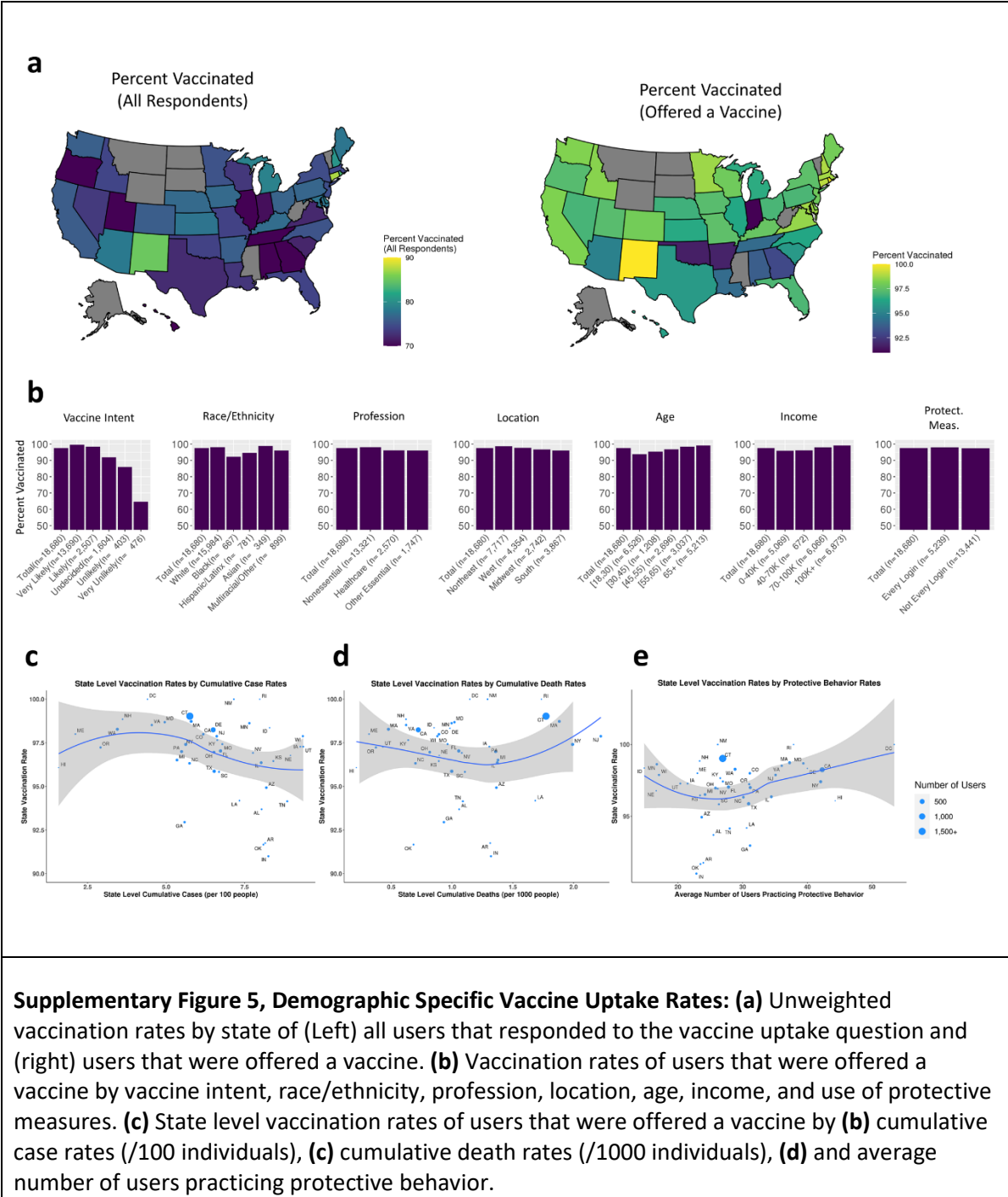
Supplementary Figure 2, Unweighted vaccine intent responses: (a) Unweighted statewide (Left) acceptance and (Right) undecided rates. **(b)** Unweighted vaccine responses across several demographic characteristics. State level hesitancy rates estimated using the HowWeFeel data by **(c)** cumulative case (per 100 individuals) and **(d)** death (per 1000 individuals) rates reported in USA Facts and **(e)** average number of users practicing protective behavior.

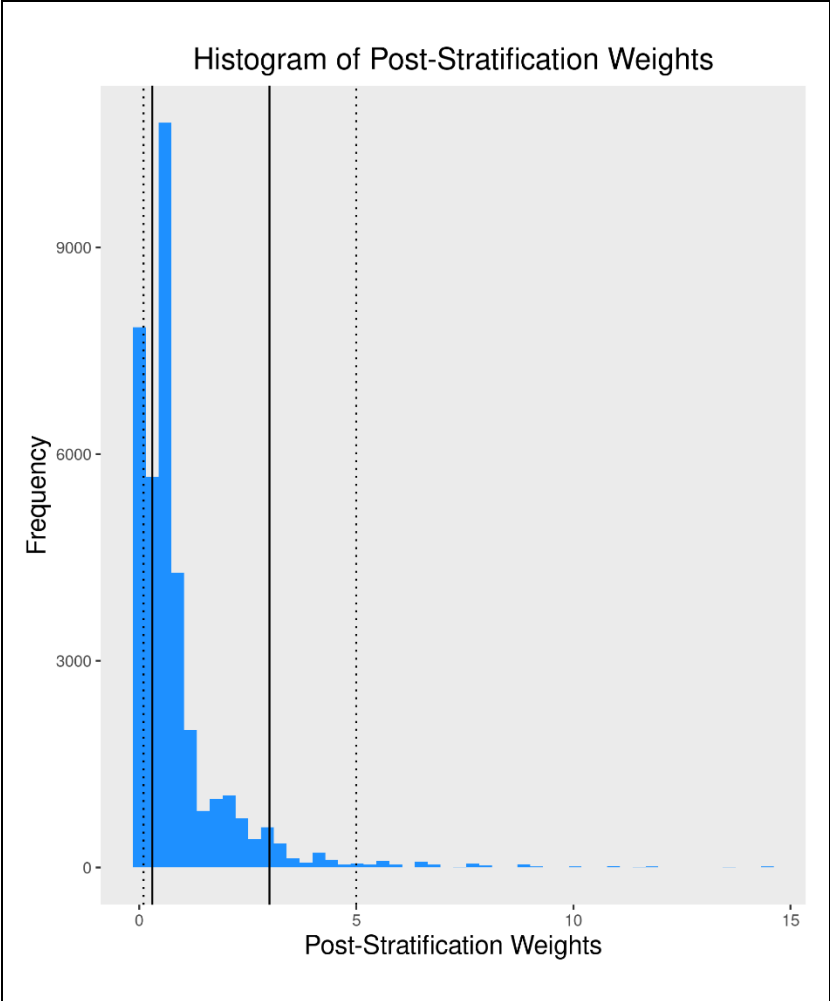


Supplementary Figure 3, HWF Vaccine Uptake Demographic Distributions : Demographic break down of the HWF user base that responded to the vaccine uptake question by **(a)** state, **(b)** sex, **(c)** race and **(d)** age.



Supplementary Figure 4, Demographic specific weighted vaccine uptake rates: (a) Weighted vaccination rates of users that were offered a vaccine by profession, location, age, income, and use of protective measures. State level weighted vaccination rates of users that were offered a vaccine by **(c)** cumulative case rates (/100 individuals), **(d)** cumulative death rates (/1000 individuals), **(e)** and average number of users practicing protective behavior.





Supplementary Figure 6, Post-Stratification Weights: Histogram of post-stratification weights adjusted for census location, race, age, and sex. Solid lines indicate the trimming threshold and the dotted line indicates the trimming threshold for the sensitivity analysis.