

## Supplemental Information

### Dimeric IgA is a specific biomarker of recent SARS-CoV-2 infection

#### Author List:

Heidi E Drummer<sup>1,2,3</sup>,  
Huy Van<sup>1</sup>,  
Ethan Klock,<sup>4</sup>  
Zihui Wei<sup>1</sup>,  
Shuning Zheng<sup>1</sup>,  
Irene Boo<sup>1</sup>,  
Rob J Center<sup>1,3</sup>  
Fan Li<sup>1</sup>  
Purnima Bhat<sup>5</sup>  
Rosemary Ffrench<sup>6</sup>  
Jillian SY Lau<sup>7,10</sup>  
James McMahan<sup>7</sup>  
Oliver Laeyendecker<sup>4,8</sup>  
Reinaldo E. Fernandez<sup>4</sup>  
Yukari C. Manabe<sup>4,9</sup>  
Sabra L. Klein<sup>9</sup>  
Thomas C. Quinn<sup>4,8</sup>  
David Anderson<sup>1</sup>

1 Burnet Institute, 85 Commercial Rd Melbourne, 3004

2 Department of Microbiology, Monash University, Clayton, 3168

3 Department of Microbiology at The Peter Doherty Institute for Infection and Immunity, The University of Melbourne, Parkville, 3052

4 Division of Infectious Diseases, Department of Medicine, Johns Hopkins School of Medicine, Baltimore, MD, USA

5 Australian National University

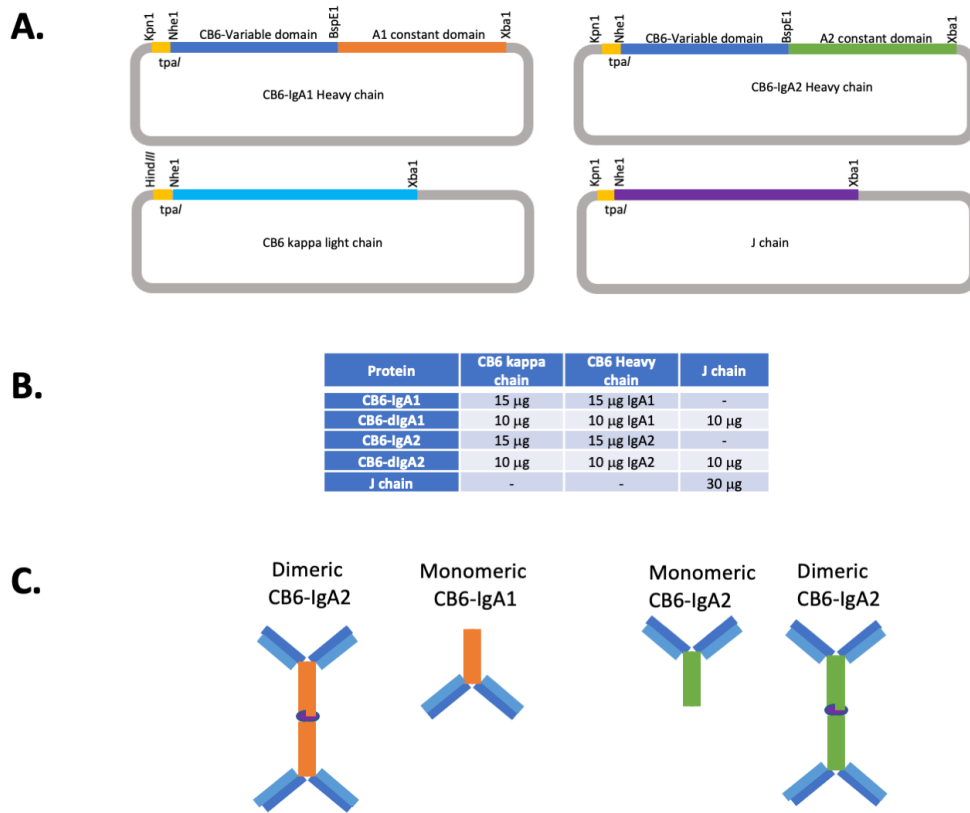
6 National Serum Reference Laboratory

7 Department of Infectious Diseases, The Alfred Hospital and Central Clinical School, Monash University

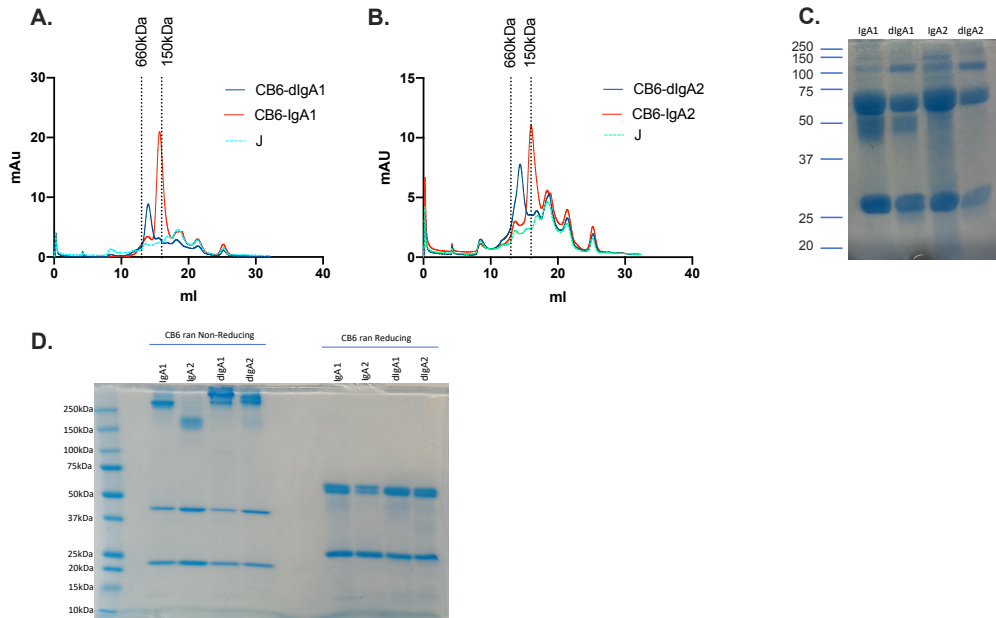
8 Division of Intramural Research, National Institute of Allergy and Infectious Diseases, National Institutes of Health, Bethesda, MD, USA

9 W. Harry Feinston Department of Molecular Microbiology and Immunology, Johns Hopkins Bloomberg School of Public Health, Baltimore, MD, USA

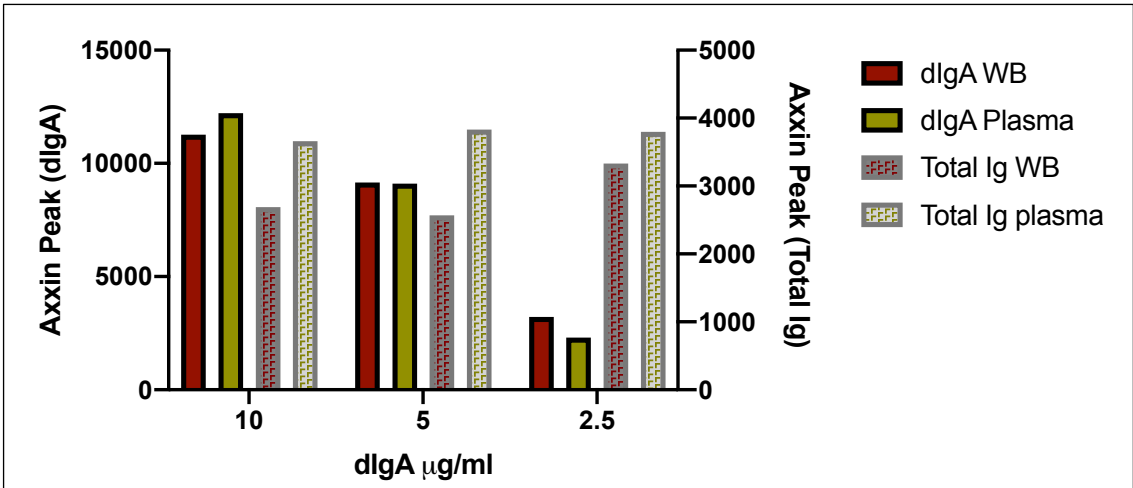
10 Department of Infectious Diseases, Eastern Health



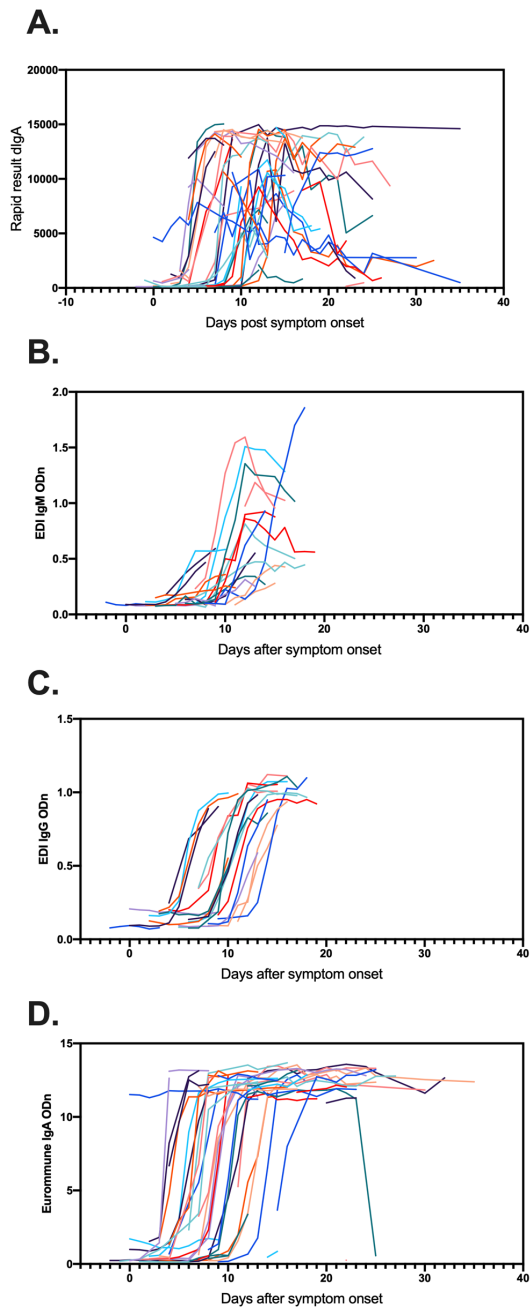
**Figure S1.** A. Schematic of vectors encoding chimerized DNA sequences for the expression of CB6-IgA1, CB6-IgA2, CB6-dIgA1 and CB6-dIgA2 immunoglobulins. B. Transfection conditions for expression in 293 Expi cells at 30 ml scale. C. Schematic of IgA species used to validate lateral flow test.



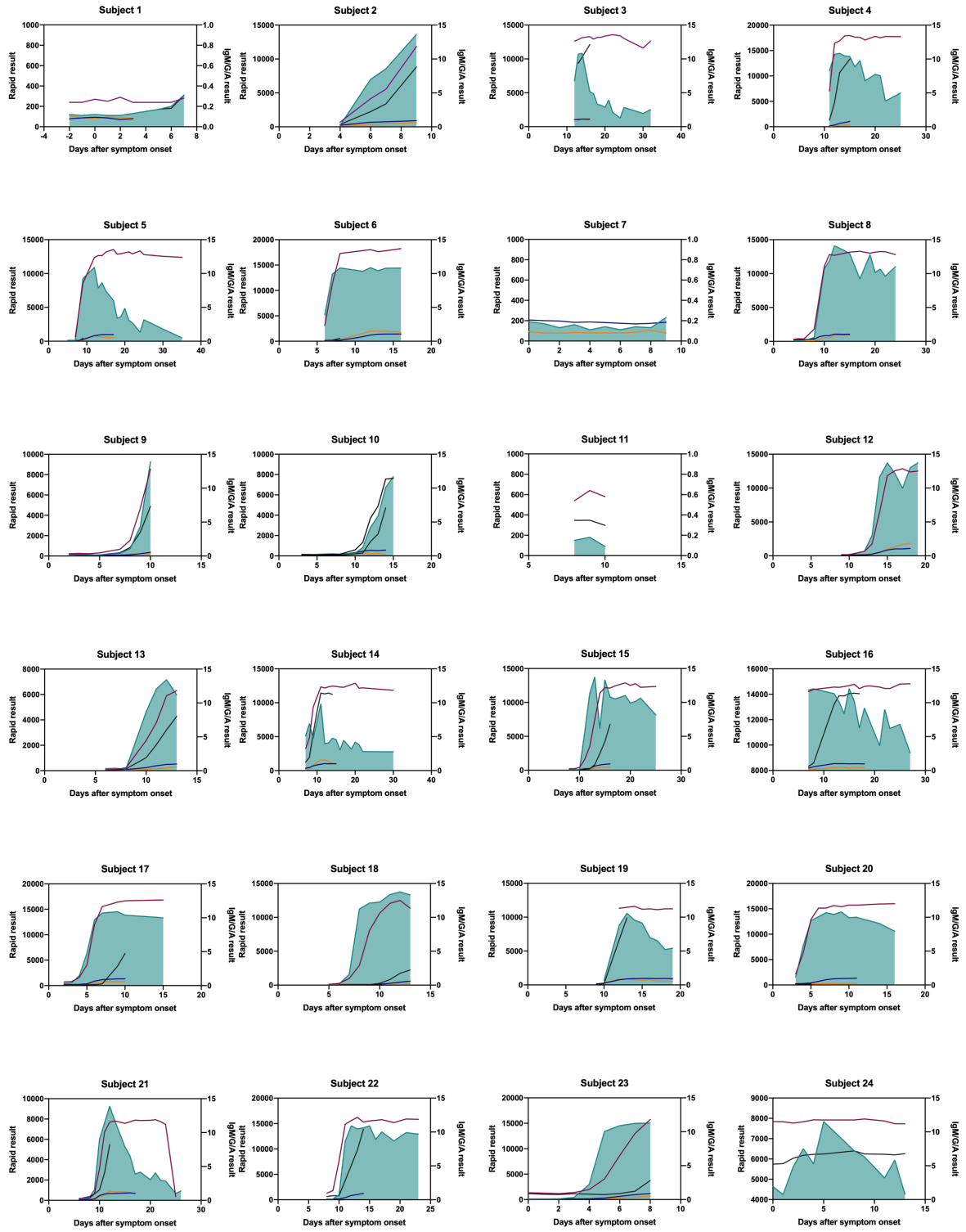
**Figure S2.** Purification of IgA and dIgA species. Ammonium sulfate precipitated CB6-dIgA1 and monomeric CB6-IgA1 (A) and CB6-dIgA2 and monomeric CB6-IgA2 (B) were buffer exchanged by dialysis into PBS and proteins purified by size exclusion chromatography on a Superose 6 10/30GL column. Peaks corresponding to the predicted size of dIgA1/2 and monomeric IgA1/2 were collected, concentrated and examined in SDS-PAGE (C). Protein L purified IgA species were affinity purified using Protein L and examined by 8-15% SDS/PAGE either non-reduced or reduced.

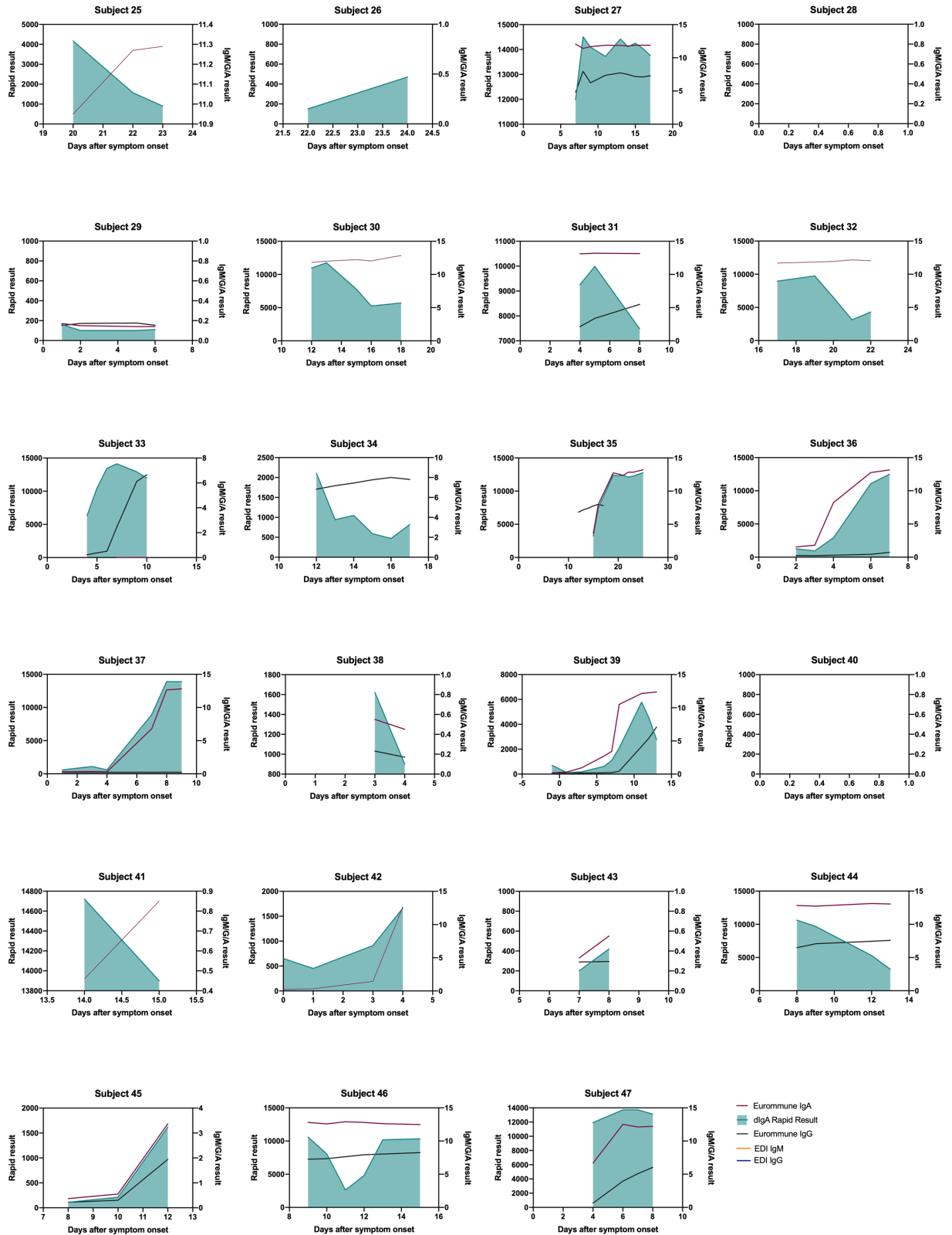


**Figure S3.** Quantitation of dIgA and total Ig levels in whole blood or plasma using the dimeric IgA LFA. Samples shown in Figure 1J were quantitated in an Axxin reader.



**Figure S4.** Analysis of dIgA in lateral flow assay (A), IgM using EDI ELISA (B), IgG using EDI ELISA (C) and IgA using EUROIMMUN ELISA (D). Plasma samples obtained at various times post symptom onset from 45 subjects were examined for the presence of each antibody type.





**Figure S5.** Subject by subject analysis of longitudinal dIgA, IgM, IgA and IgG responses towards SARS-CoV-2 antigens. Sera from available time points were analysed using the Rapid dIgA test, EDI IgG, EDI IgM and EUROIMMUN IgG and IgA test.

**Table S1.** Characteristics of the 22 non-SARS-CoV-2 coronavirus panel

Sample ID	EDI-IgM Result	Rhinovirus/Enterovirus	Influenza	PCR result				Parainfluenza	HIV	IgG result				
				229E	HKU1	NL63	OC43			229E	HKU1	NL63	OC43	dIgA
86	-	+	-	-	-	-	-	-	-	+	+	+	+	+
85	-	+	-	-	-	-	-	-	-	+	+	+	+	-
69	-	+	-	-	-	-	-	-	-	-	+	+	+	-
68	-	+	-	-	-	-	-	-	-	-	+	+	+	-
67	-	+	-	-	-	-	-	-	-	-	+	+	+	-
93	-	+	-	-	-	-	-	-	-	+	+	-	-	-
73	-	+	-	-	-	-	-	+	+	+	+	+	+	-
82	+	-	-	+	-	-	-	-	-	+	+	+	+	-
44	-	-	-	-	-	+	-	-	+	+	+	+	+	-
95	-	+	-	-	-	-	-	-	-	+	+	+	+	-
84	-	+	-	-	-	-	-	-	-	+	+	+	+	-
83	-	+	-	-	-	-	-	-	+	+	+	+	+	-
57	-	+	-	-	-	-	-	-	-	+	+	+	+	-
60	-	+	-	-	-	-	-	-	-	-	+	-	-	-
100	-	+	-	-	-	-	-	-	-	+	-	+	+	-
58	-	+	-	-	-	-	-	-	-	-	+	+	-	-
80	-	-	-	-	-	-	+	-	+	+	+	+	+	-
81	-	-	-	-	-	-	+	-	-	+	+	+	+	-
55	-	+	-	-	-	-	-	-	-	-	+	+	-	-
91	-	+	-	-	-	-	-	-	-	+	+	+	+	-
61	-	+	-	-	-	-	-	-	-	+	+	+	+	-
98	-	+	-	-	-	-	-	-	+	+	+	+	+	-