

Figure i. Abundance of microbial kingdom in all sputum samples. Bacteria were the most dominant Kingdom/Division in the sputum samples' microbiota.

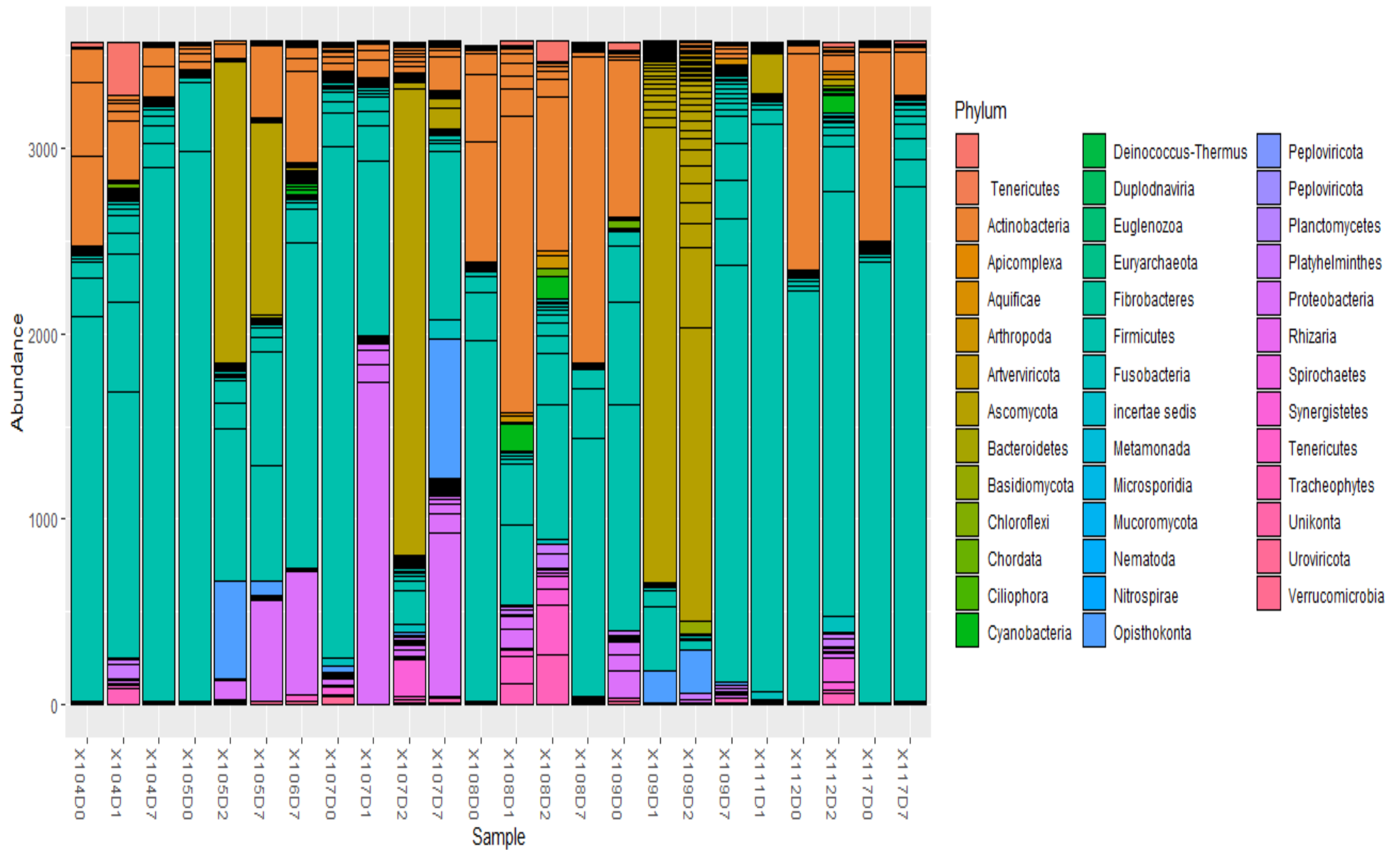


Figure ii. Abundance of microbial phyla in all sputum samples. Firmicutes, Actinobacteria, Bacteroidetes, Ascomycota, and Proteobacteria were common phyla in the microbiota.

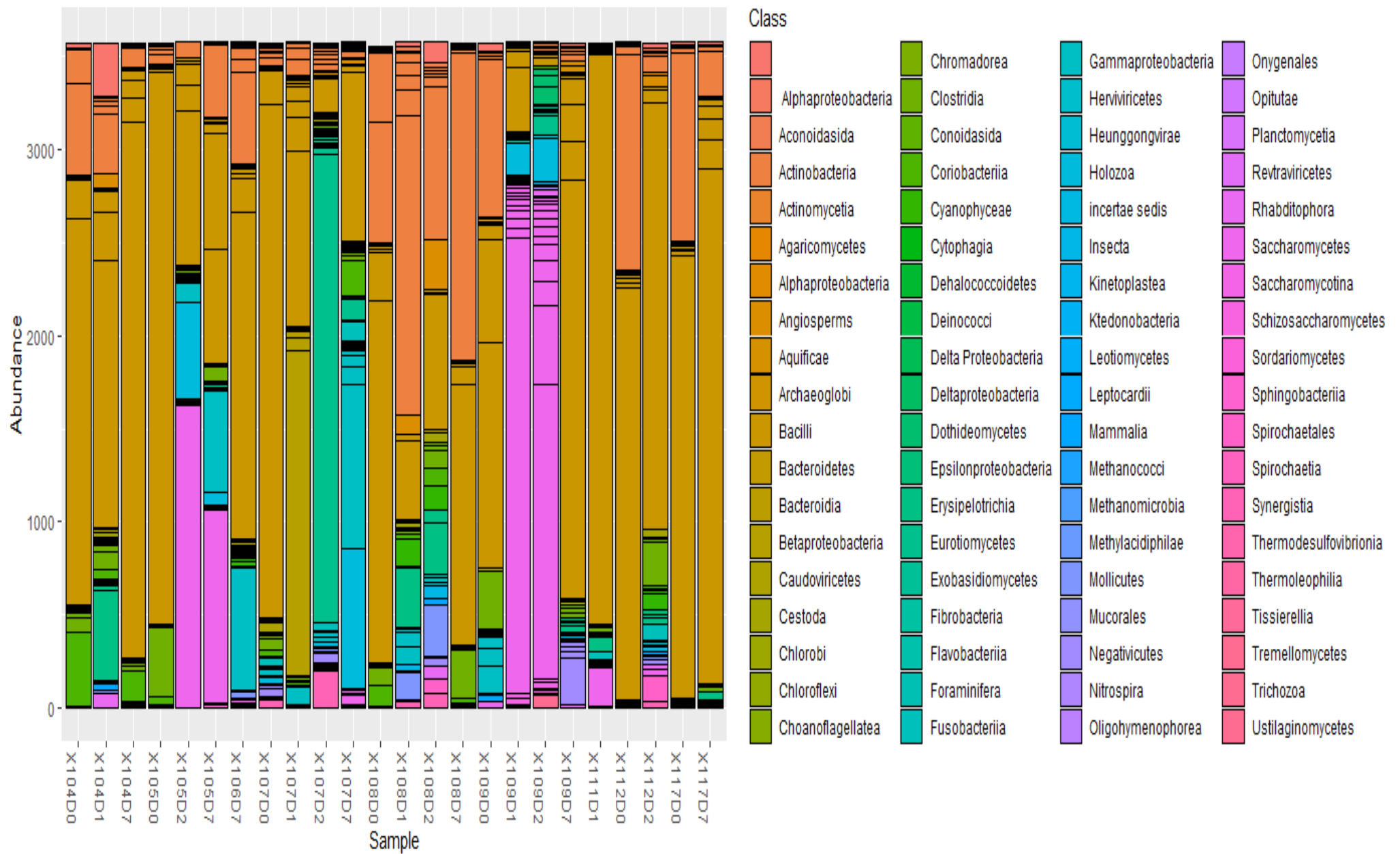


Figure iii. Abundance of microbial class in all sputum samples.

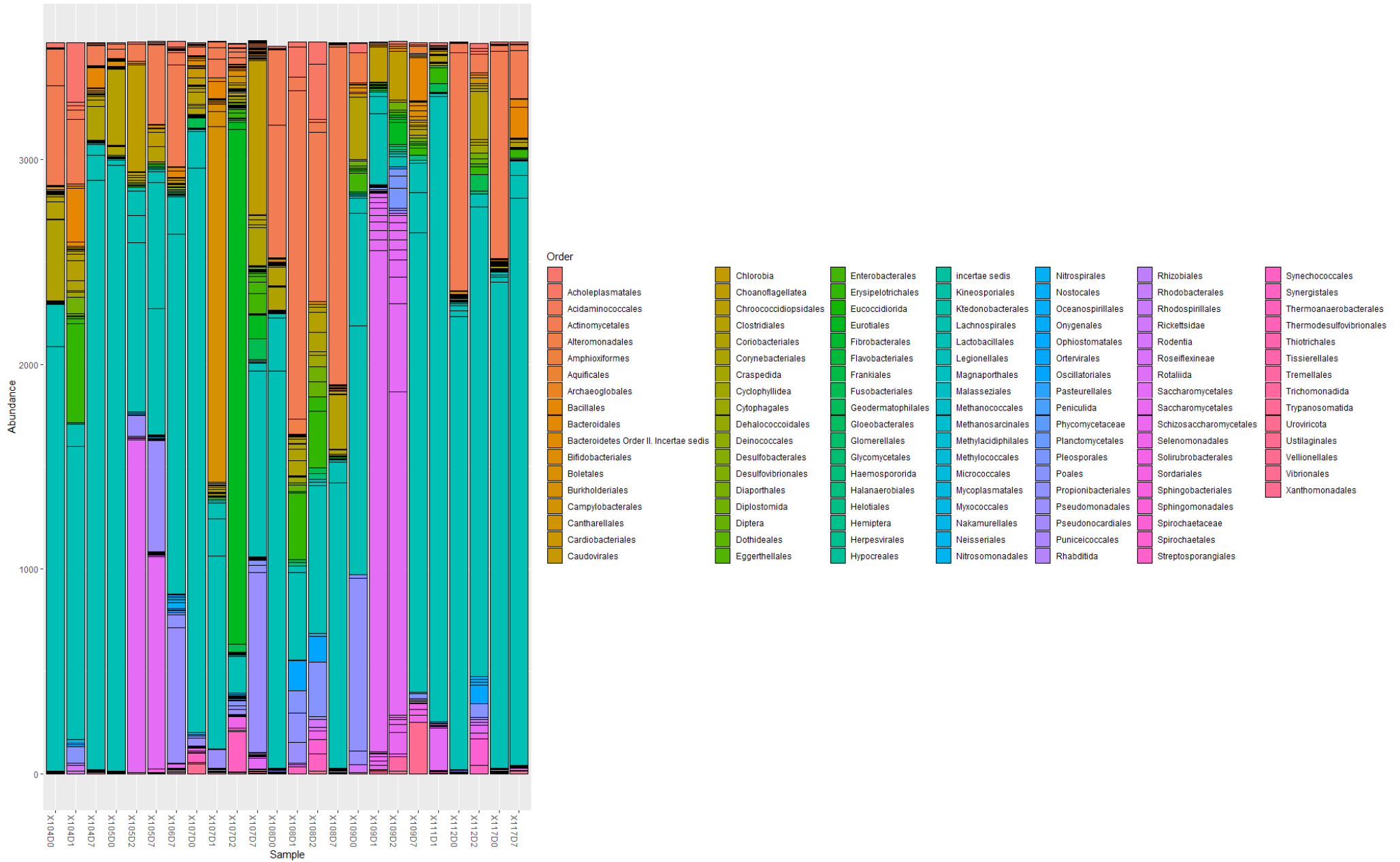


Figure iv. Abundance of microbial order in all sputum samples

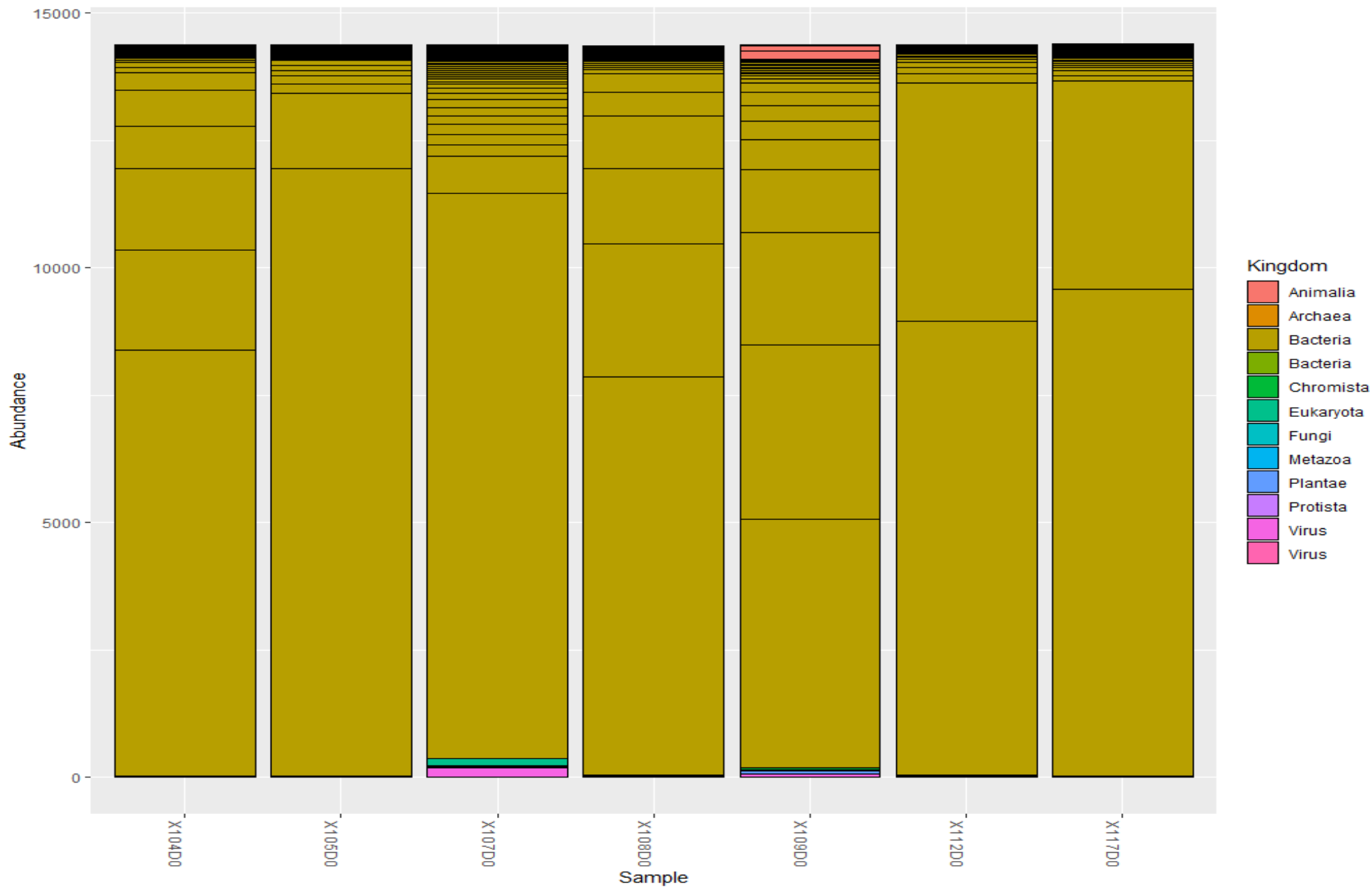


Figure vii. Abundance of microbial Kingdoms in baseline samples. Bacteria were the most abundant Kingdom/Division in the baseline sputum samples.

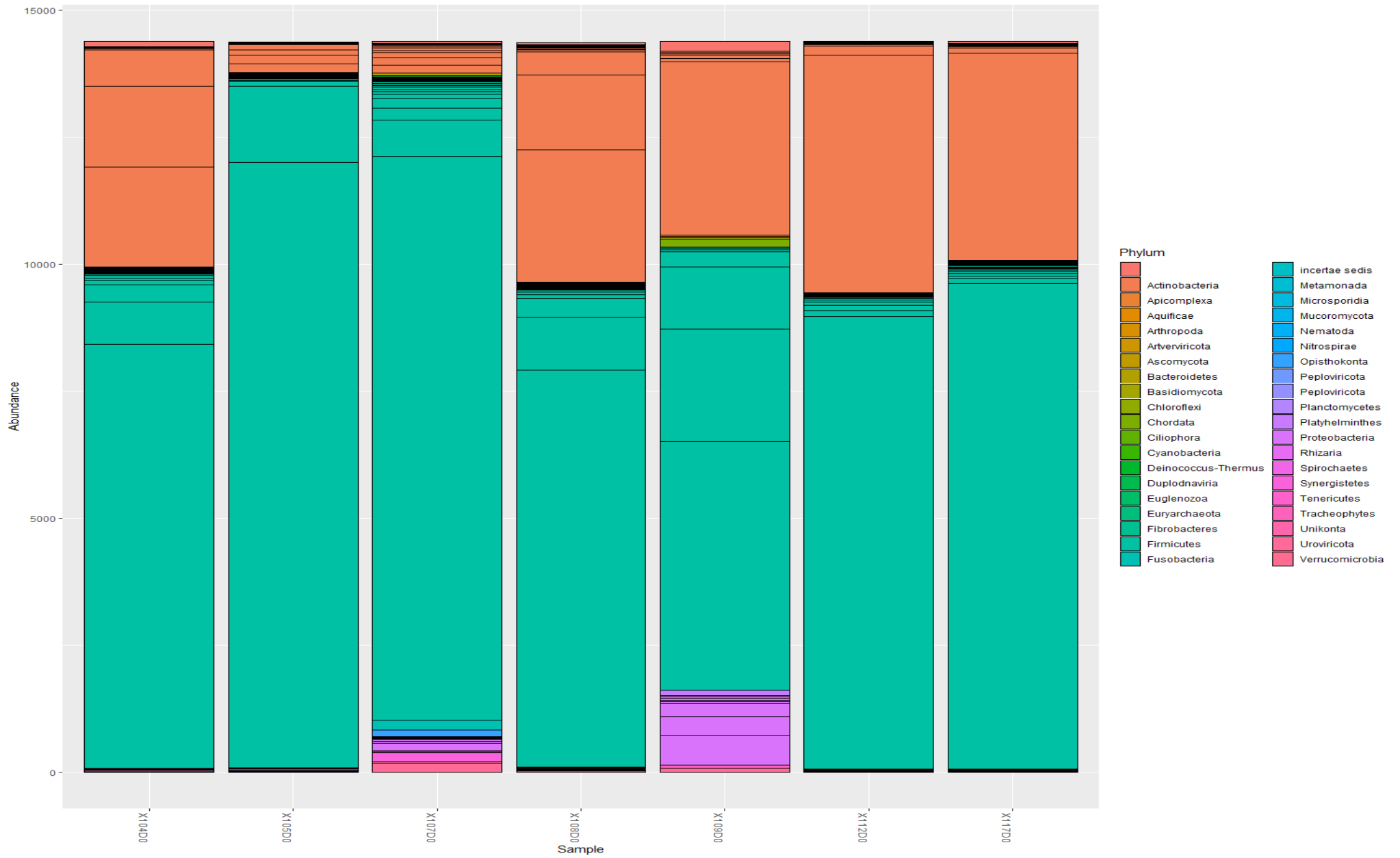


Figure viii. Abundance of microbial Phyla in baseline samples. Actinobacteria and Firmicutes were the major phyla in the baseline samples.

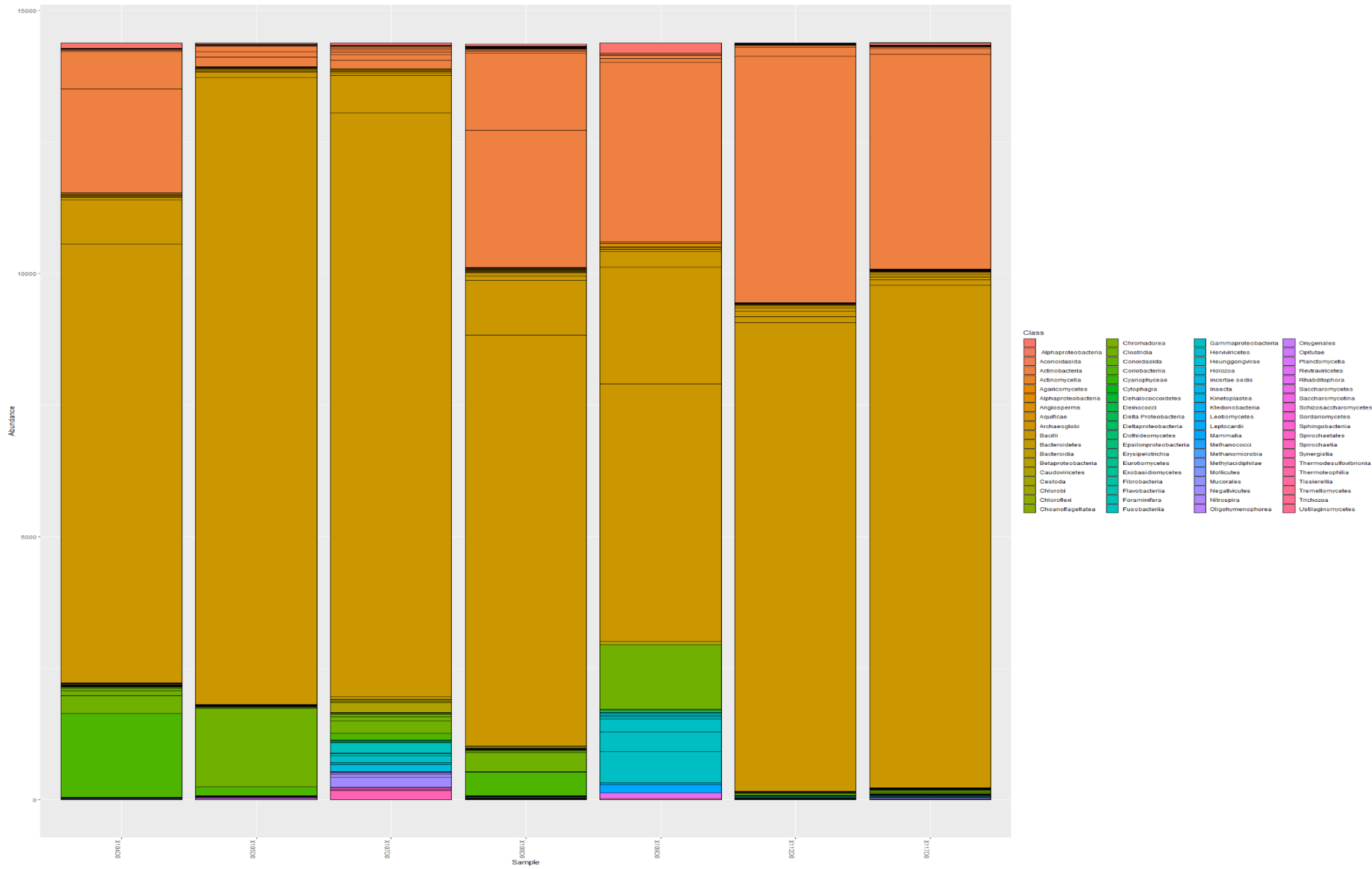


Figure ix. Abundance of microbial classes in baseline sputum samples. Bacilli and Actinobacteria were common phyla.

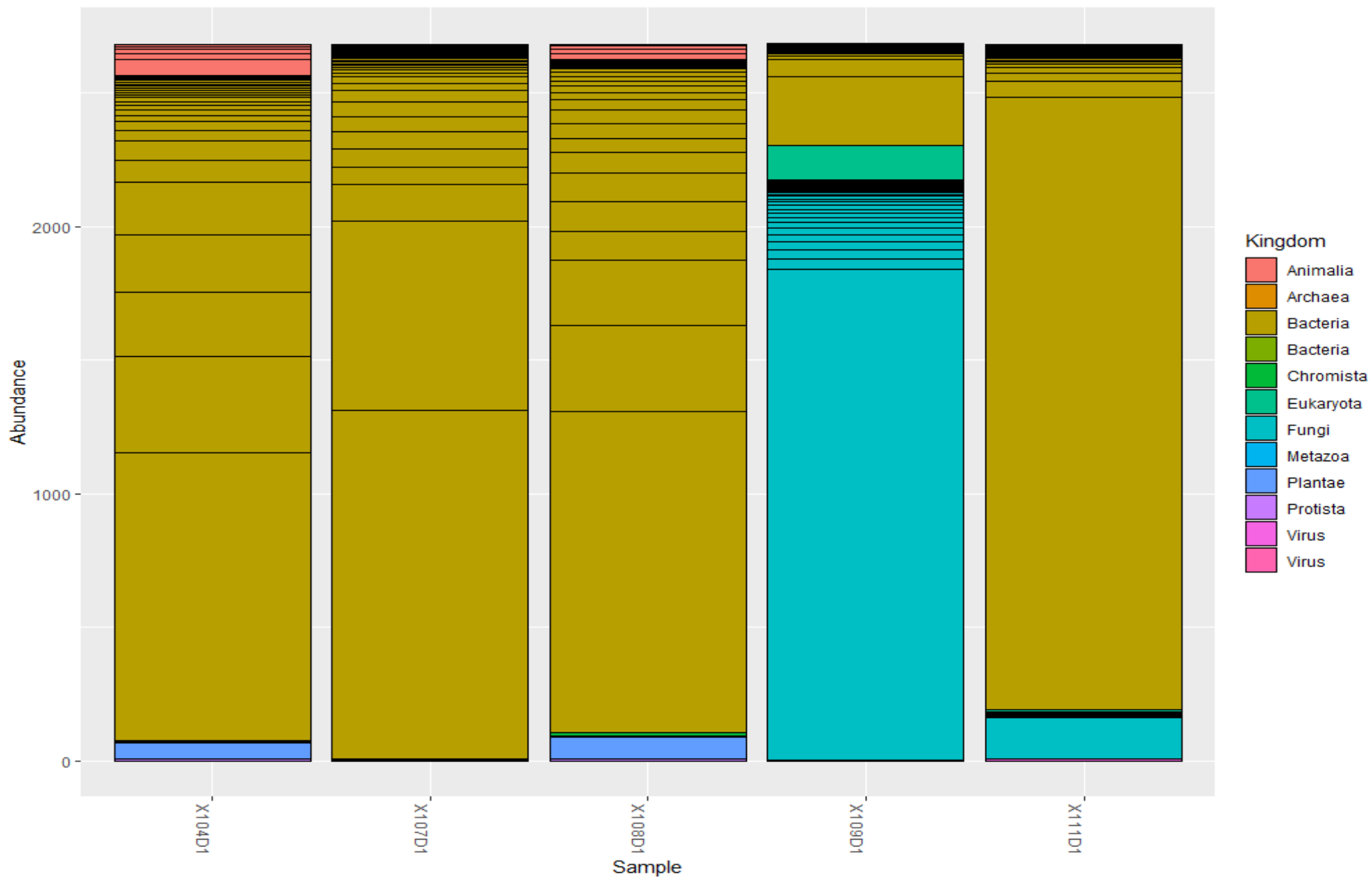


Figure xiii. Abundance of microbial kingdom in day 1 sputum samples

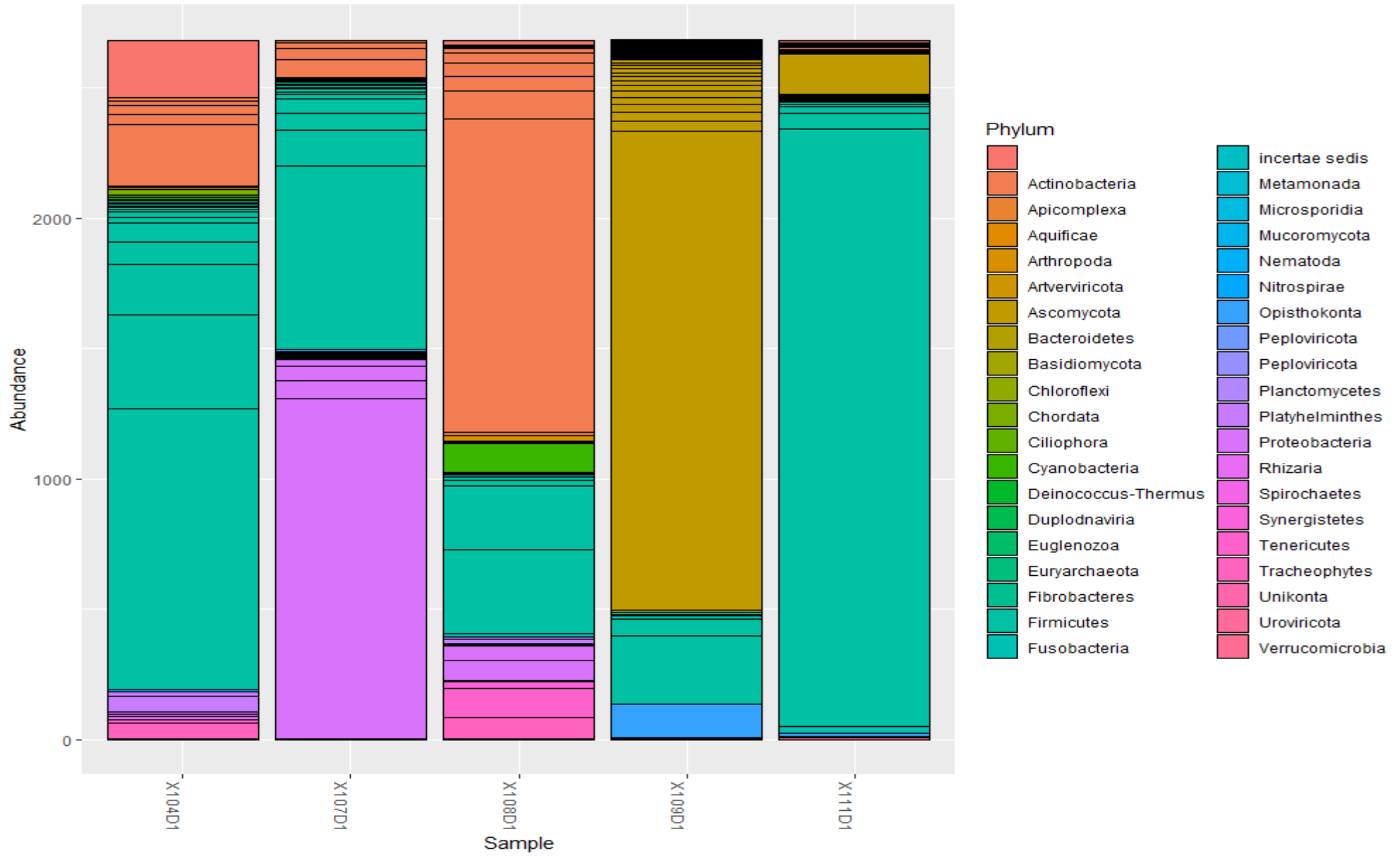


Figure xiv. Abundance of microbial phylum in day 1 sputum samples

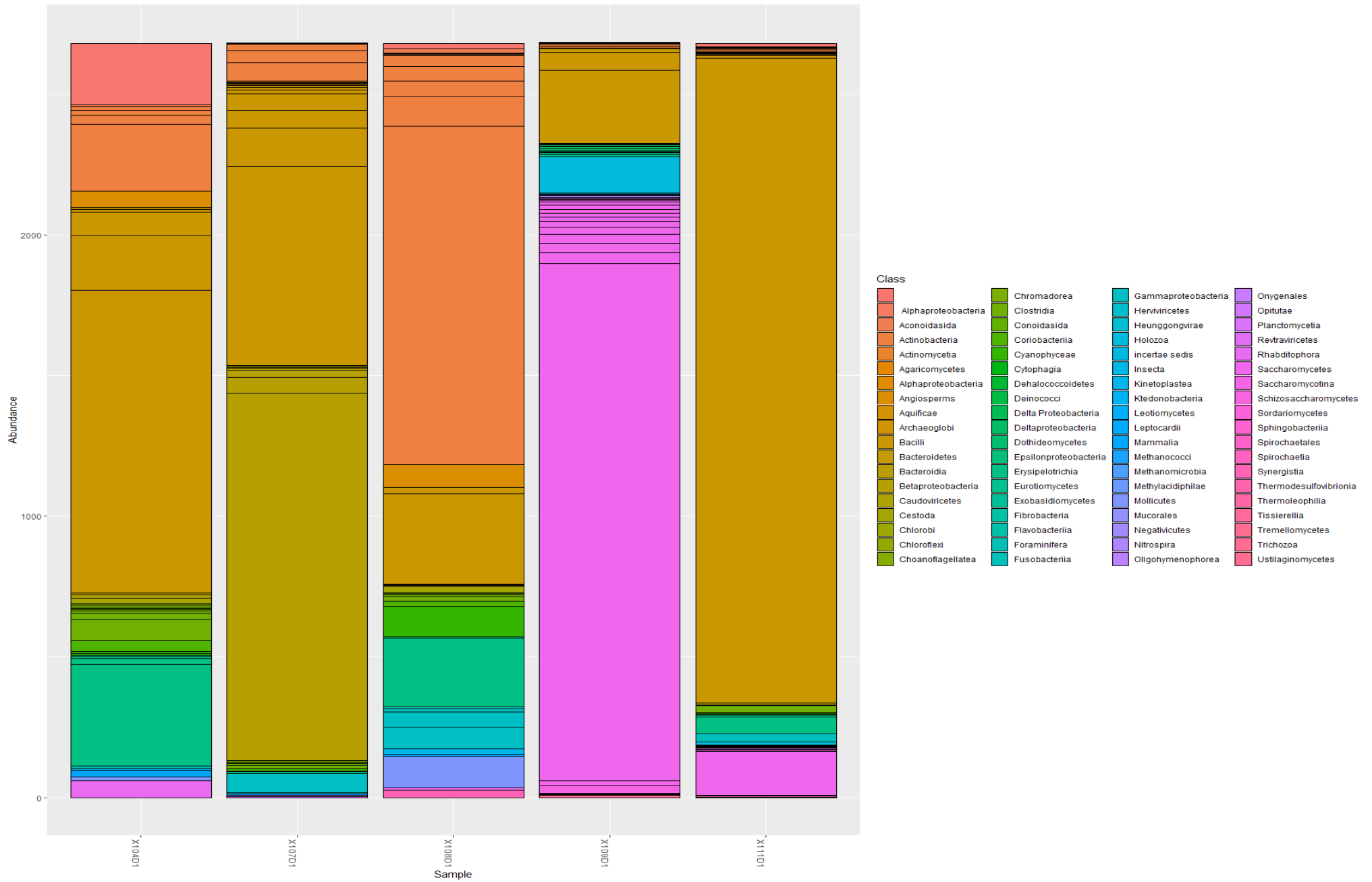


Figure xv. Abundance of microbial classes in day 1 sputum samples

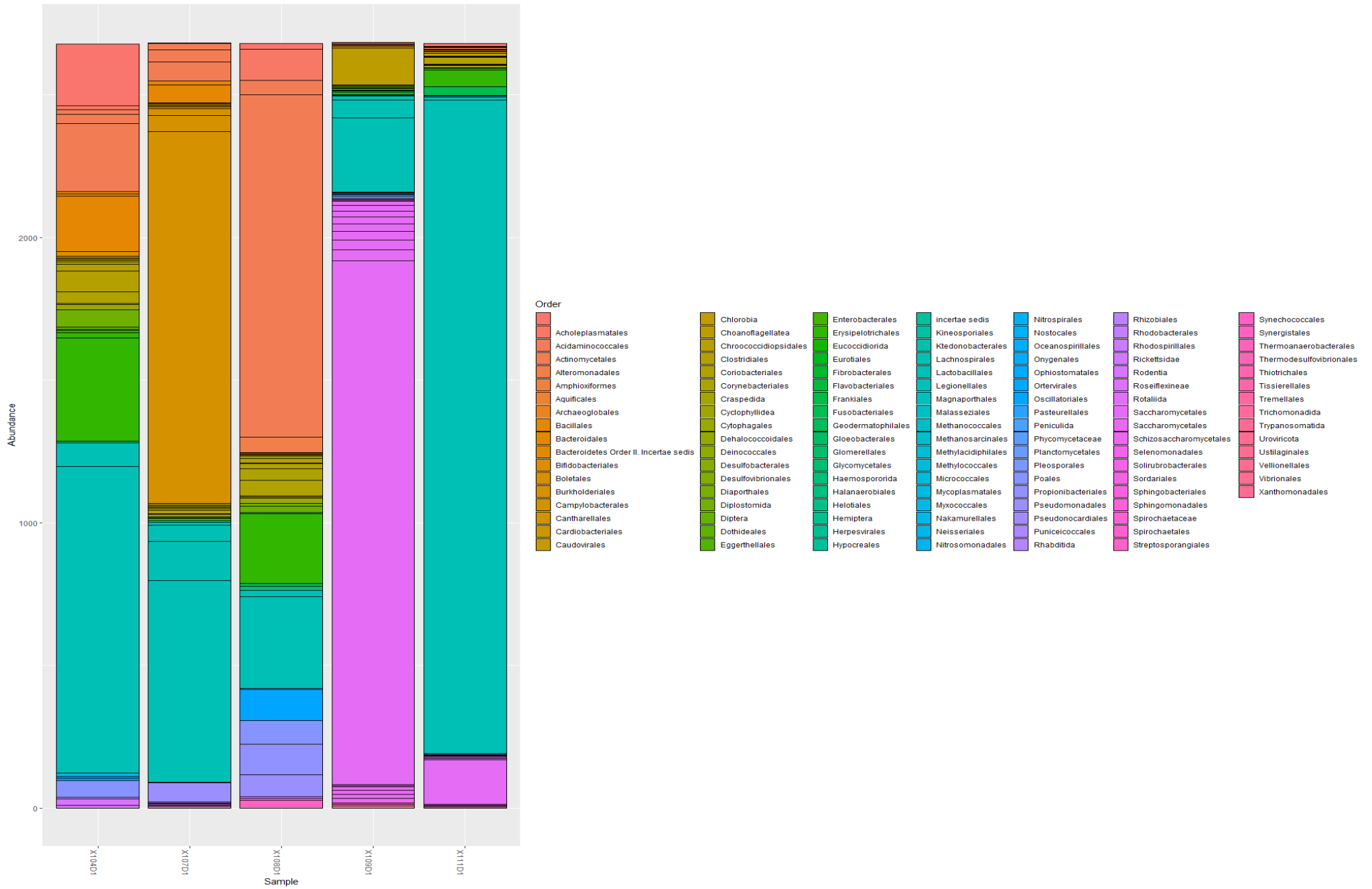


Figure xvi. Abundance of microbial orders in day 1 sputum samples

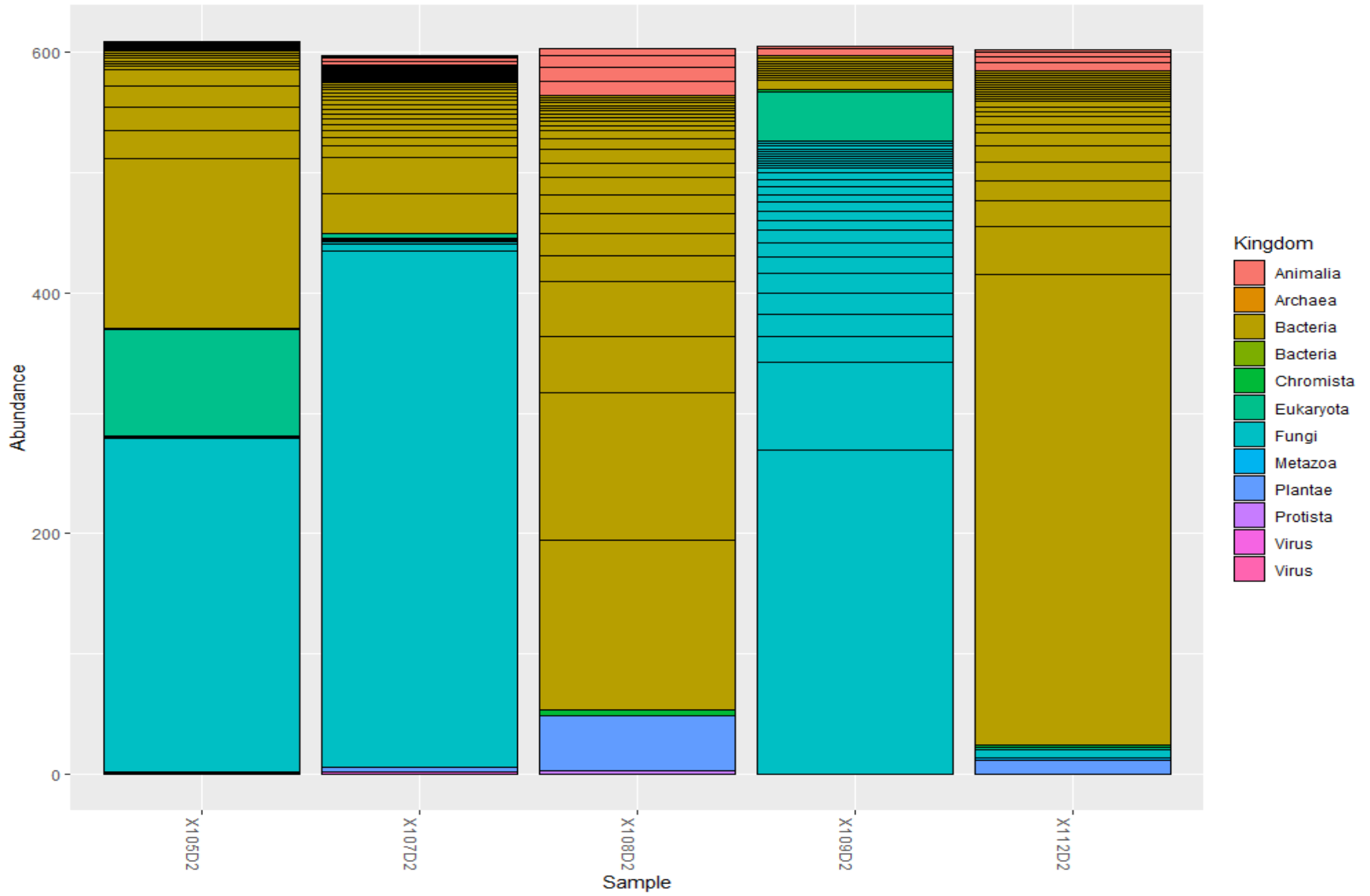


Figure xix. Abundance of microbial Kingdoms in day 2 sputum samples.

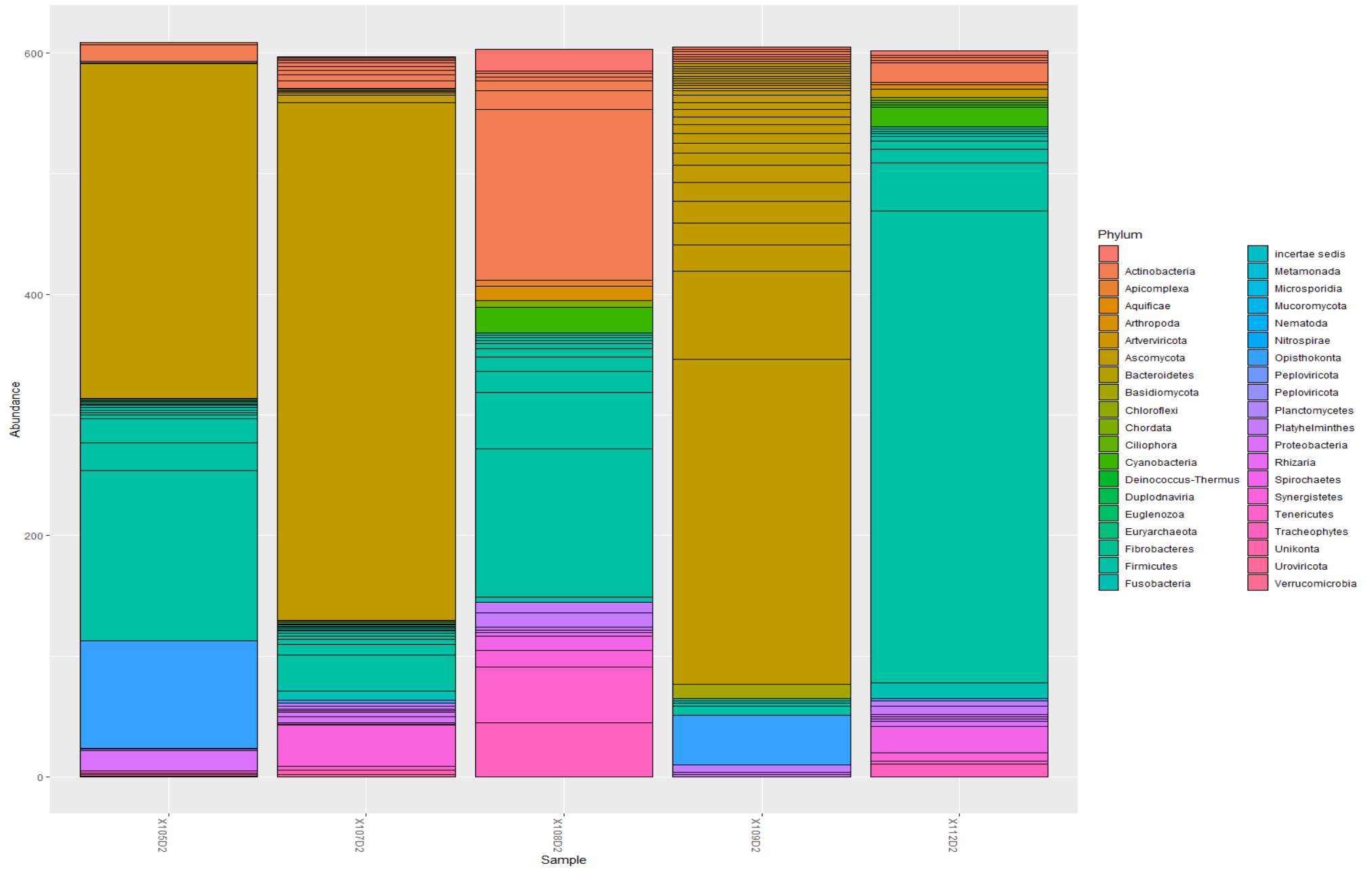


Figure xx. Abundance of microbial Phyla in day 2 sputum samples.

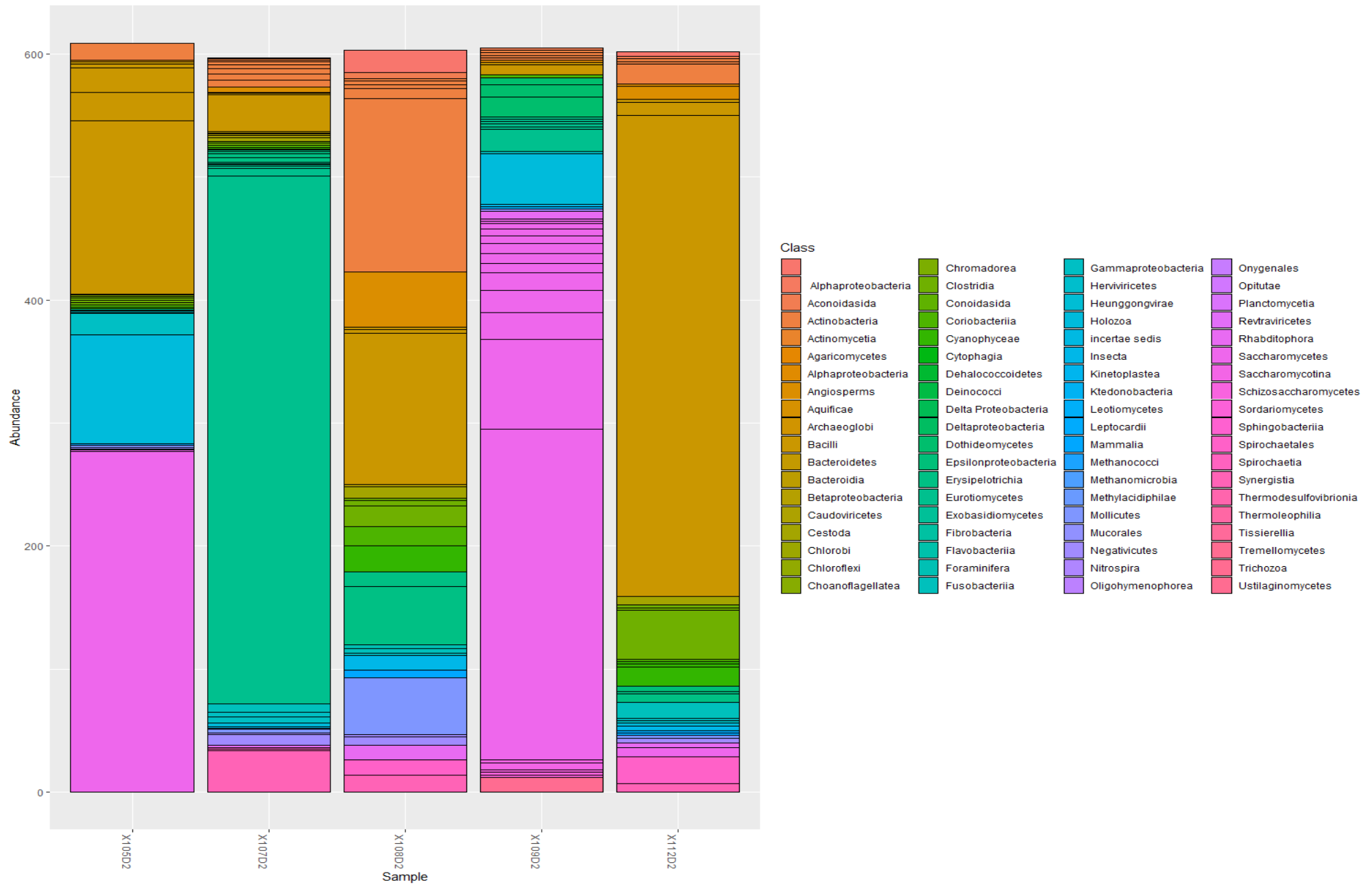


Figure xxi. Abundance of microbial classes in day 2 sputum samples.

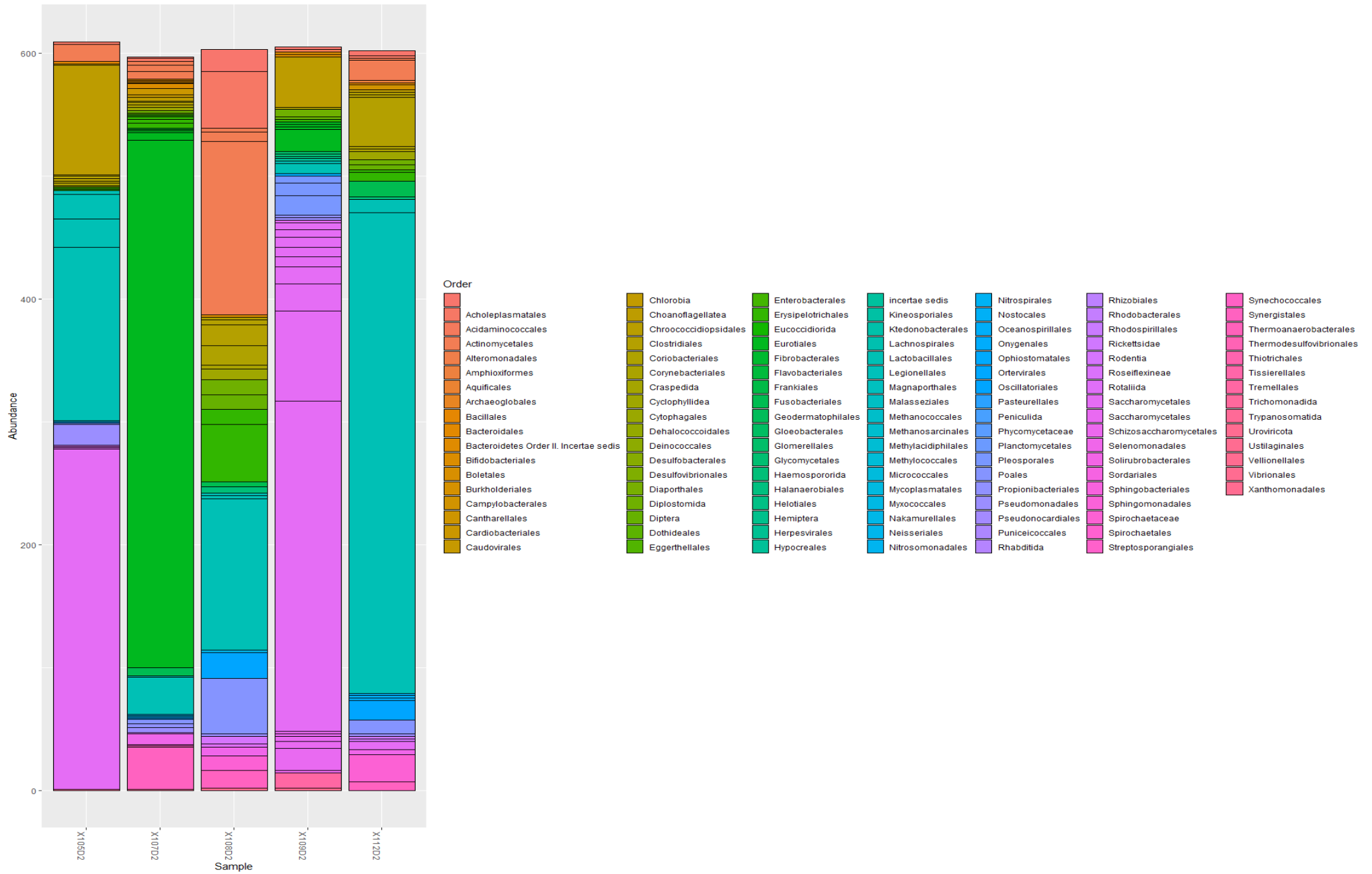
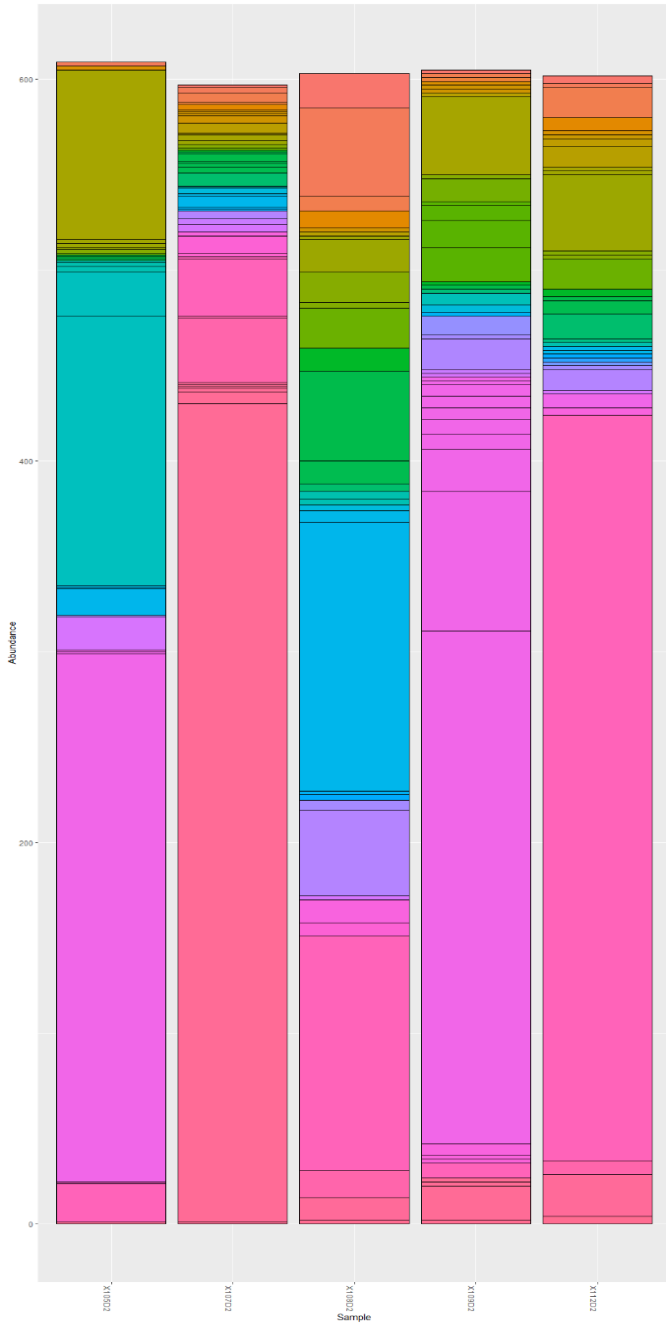


Figure xxii. Abundance of microbial order in day 2 sputum samples.



Family										
Enteroclostridiidae	Aspergillaceae	Chlorobacteraceae	Dinhalococcoidia	Fusobacteriaceae	Legionellaceae	Mycobacteriaceae	Pasturellaceae	Pseudobacteroidaceae	Sagittariaceae	Tischneriaceae
Acaryochloridaceae	Aureimonadaceae	Chloroflexellales	Deinococcaceae	Geodermatophilaceae	Leptospirillaceae	Nitrospirillaceae	Pectobacteriaceae	Pseudococcaceae	Selenomonadaceae	Tischneromastix
Acholeplasmataceae	Bacillaceae	Clostridiales Family XI Incertae Sedis	Dermatobacteriaceae	Gloeobacteriaceae	Leuconostocaceae	Nitrospiroplasmaceae	Peptobacteriales	Pseudomonadaceae	Shewanellaceae	Typanosomatidae
Acidimicrobiaceae	Beutenbergiaceae	Codonomonadaceae	Desulfotomobacteriaceae	Gomphonellaceae	Listeriaceae	Nitrospiraceae	Peptoniphilaceae	Pseudonocardaceae	Siphonolaceae	Turkibacteriaceae
Actinomyces	Bifidobacteriaceae	Comamonadaceae	Dietziaceae	Gordoniaceae	Magnaporthaceae	Nitrosomonadaceae	Peptoniphilus	Punicococcaceae	Springobacteriaceae	Ustilaginaceae
Actinosynnemataceae	Bifidobacteriaceae	Comamonadaceae	Dipodascaceae	Halanaerobacteriaceae	Malaissiacaceae	Nitrospiroplasmaceae	Phaeosphaeriaceae	Rhodococcaceae	Springomonadaceae	Vibrionellaceae
Aerococcaceae	Bradyrhizobiaceae	Comamonadaceae	Droserophilidae	Halomonadaceae	Methanococcaceae	Nocardiaceae	Phrymomyces	Rhodobacteriaceae	Sporosinusaceae	Xanthomonadaceae
Aleellomyces	Brevibacteriaceae	Coriobacteriaceae	Eggerthellaceae	Helicobacteriaceae	Methanorhizobiaceae	Nocardiothraupaceae	Planctomycetaceae	Rhodospirillales incertae sedis	Staphylococcaceae	Yersiniaceae
Alcaligenaceae	Brucellaceae	Coriobacteriaceae	Enterobacteriaceae	Herpesoviridae	Methylobacteriaceae	Nonionidae	Plasmodiidae	Rhodothermaceae	Staphylococcaceae	
Allycyclobacteriaceae	Burkholderiaceae	Corynebacteriaceae	Enterococcaceae	Herpesoviridae	Methylobacteriaceae	Nostocaceae	Plectosphaerellaceae	Rhodothermaceae	Streptococcaceae	
Alteromonadaceae	Campylobacteriaceae	Corynebacteriaceae	Eristaceae	Microsporangiaceae	Methylobacteriaceae	Oscillatoriales	Pectiniporaceae	Ruminococcaceae	Streptomyces	
Anaeromyxobacteriaceae	Caritburteriaceae	Cyphomonadaceae	Erythrobacteriaceae	Myxococcaceae	Methylobacteriaceae	Oxycoccoidae	Proteaceae	Saccharomyces	Streptomyces	
Aneliovividae	Cardiobacteriaceae	Cryptococcaceae	Erythrobacteriaceae	Myxococcaceae	Methylobacteriaceae	Onygenaceae	Pedovividae	Saccobacteriaceae	Smergillaceae	
Anoplocephalidae	Carobacteriaceae	Cryptosporidiidae	Erythrobacteriaceae	Myxococcaceae	Methylobacteriaceae	Oxycoccoidae	Porphyromonadaceae	Sanguibacteriaceae	Thermoaerobacteriaceae	
Aphanizomenonaceae	Caulimicrobiaceae	Cyanoflexellales	Eubacteriaceae	Klebsiellaceae	Micromonosporaceae	Oxylotomataceae	Prevotellaceae	Sarcocystidae	Thermodesulfobacteriaceae	
Aquificaceae	Cellulomonadaceae	Cyctobacteriaceae	Eubacteriaceae	Kyloccaceae	Moraxellaceae	Oxylotomataceae	Prevotellaceae	Schistosomatidae	Thiobacillaceae	
Archaeoglobaceae	Chloroflexellales	Cyphomonadaceae	Eubacteriaceae	Planctomycetaceae	Morganellaceae	Parabacteriaceae	Prophionibacteriaceae	Schistosachromyces	Thiodiaphaceae	
Archaeomicrobiaceae	Chloroflexellales	DeBarymycetaceae	Frankiaceae	Planctomycetaceae	Lactobacteriaceae	Parameciidae	Propionibacteriales	Sclerotiniaceae	Trichonema	

Figure xxiii. Abundance of microbial families in day 2 sputum samples.

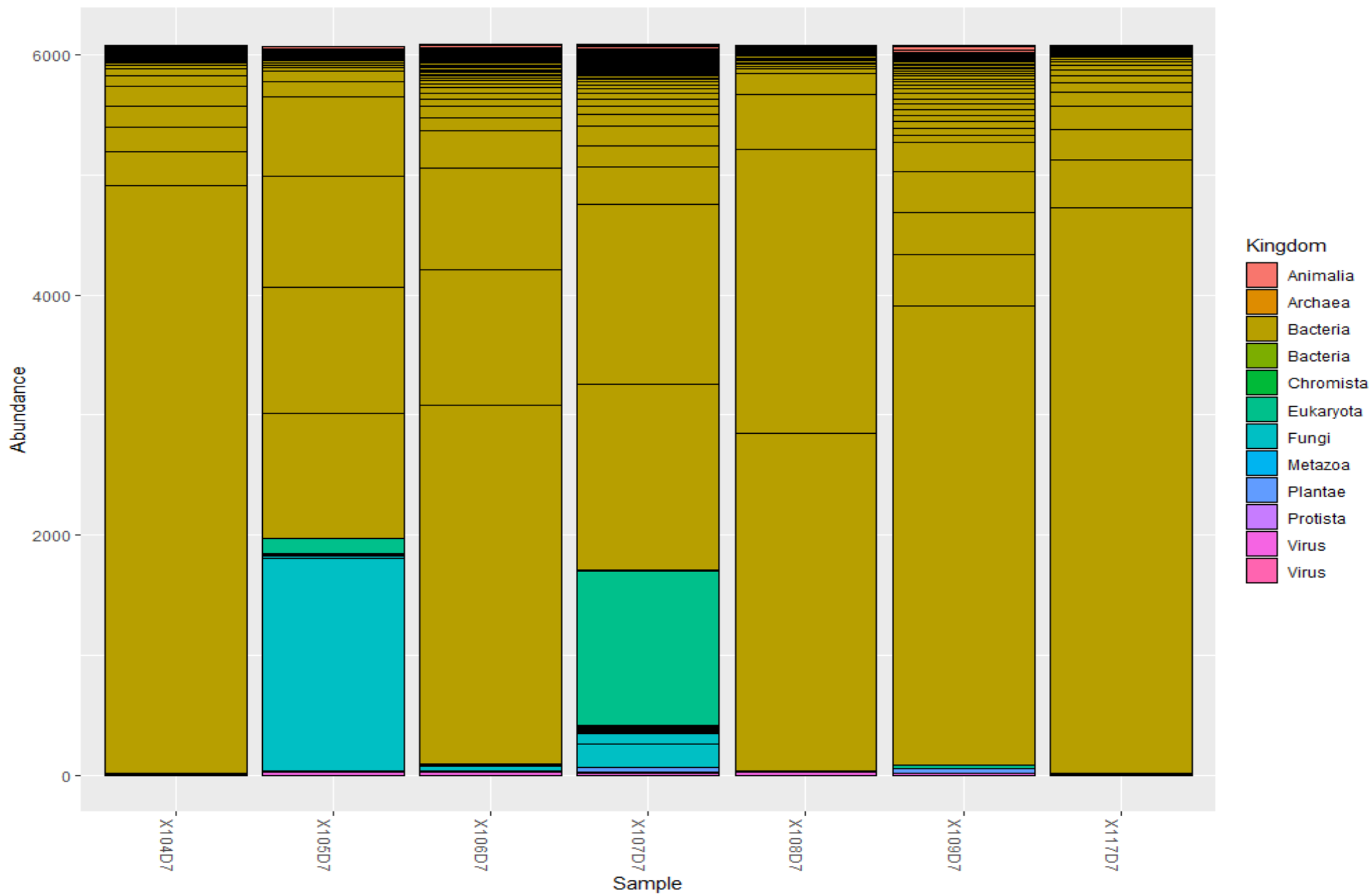


Figure xxv. Abundance of microbial kingdom in day 7 sputum samples.

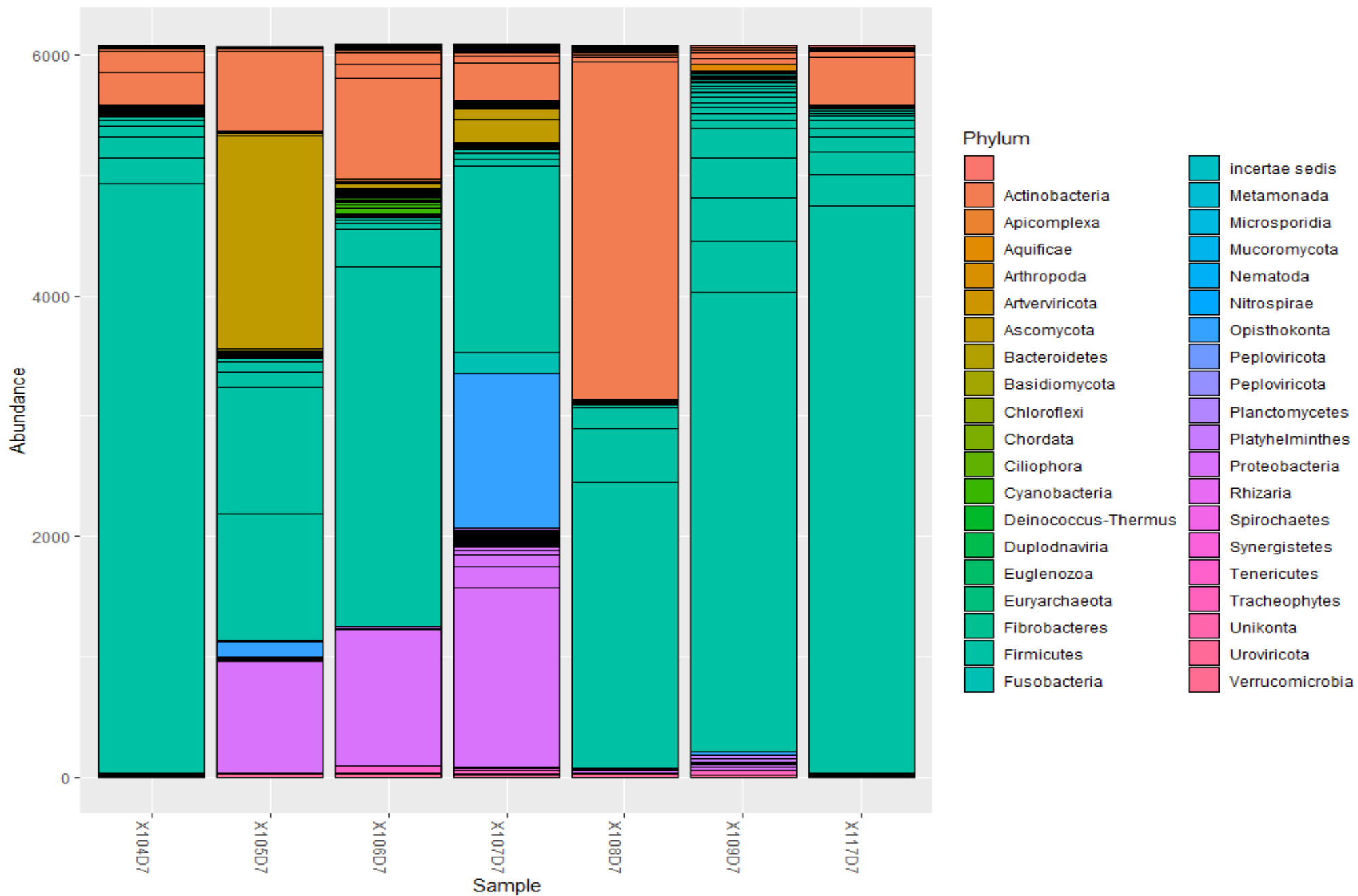


Figure xxvi. Abundance of microbial phyla in day 7 sputum samples.

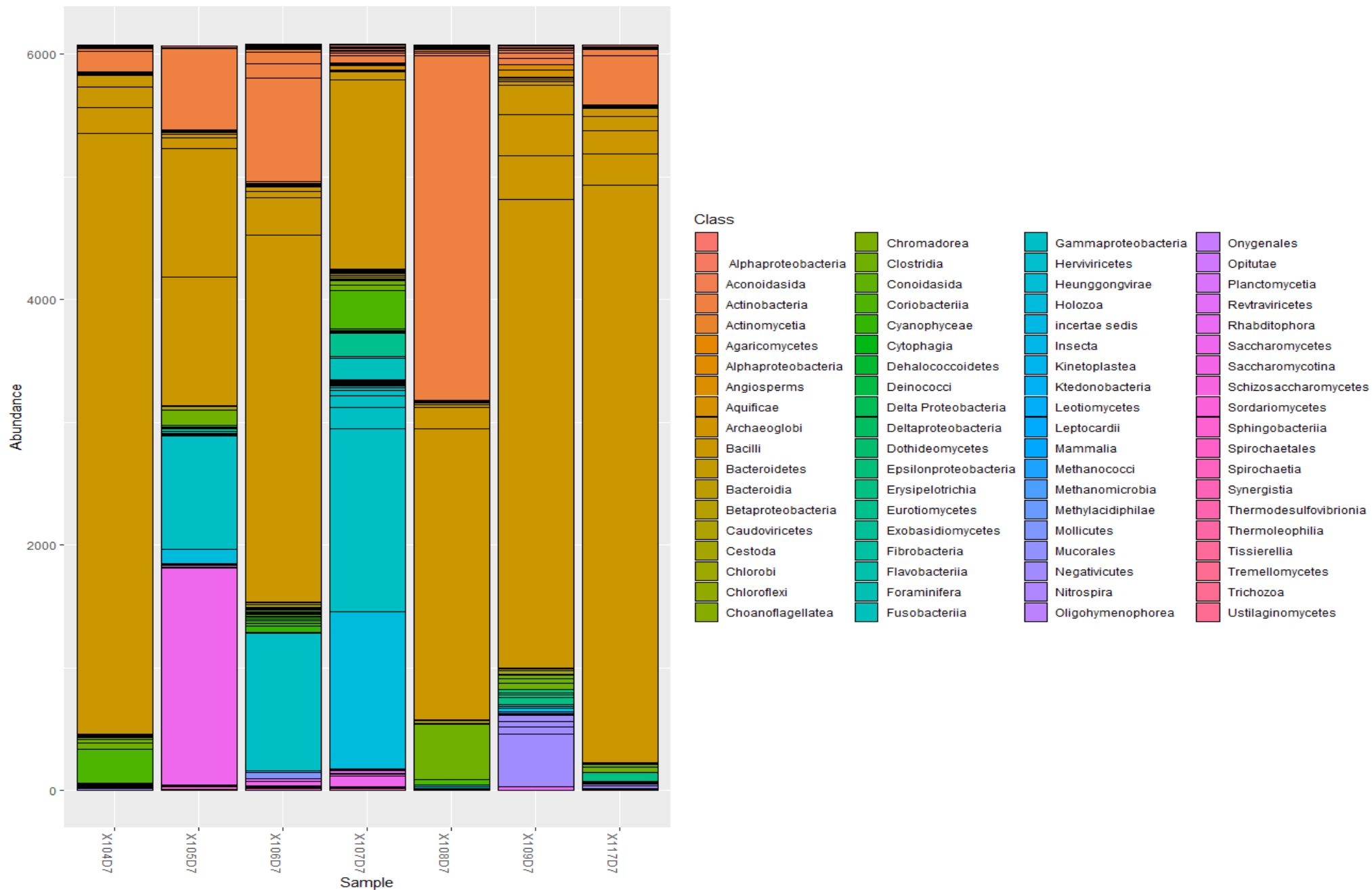


Figure xxvii. Abundance of microbial classes in day 7 sputum samples.



Figure xxviii. Abundance of microbial orders in day 7 sputum samples.

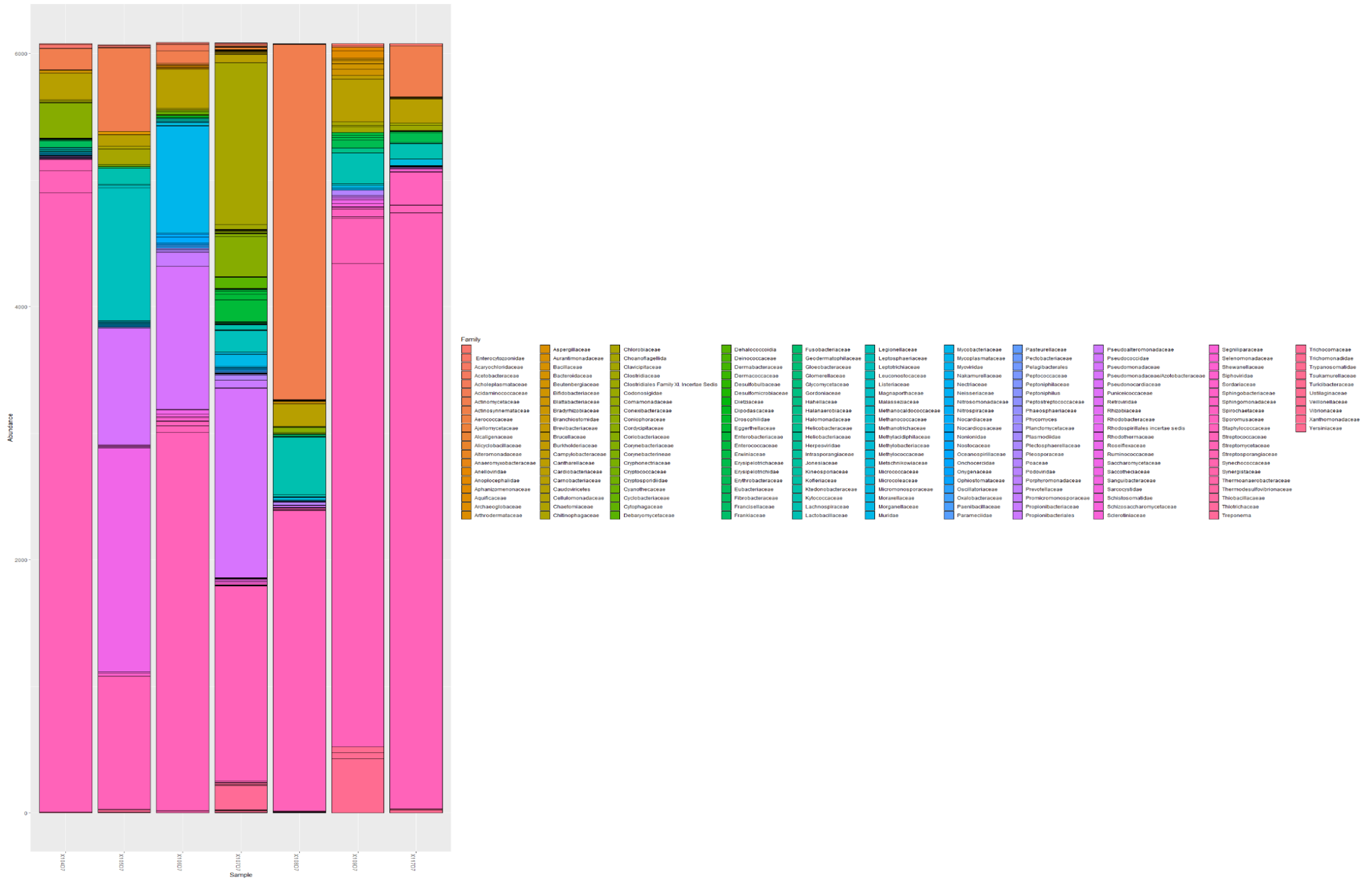


Figure xxix. Abundance of microbial families in day 7 sputum samples.

