

# 1 **Long-term course of humoral and cellular immune responses in outpatients after SARS-** 2 **CoV-2 infection**

3  
4 Julia Schiffner<sup>1,2†</sup>, Insa Backhaus<sup>3†</sup>, Jens Rimmele<sup>2</sup>, Sören Schulz<sup>2</sup>, Till Möhlenkamp<sup>2</sup>, Julia Maria Klemens<sup>4</sup>,  
5 Dorinja Zapf<sup>4</sup>, Werner Solbach<sup>1,2††</sup>, Alexander Mischnik<sup>2††\*</sup>

6  
7 <sup>1</sup> University of Luebeck, Center for Infection and Inflammation Research, Luebeck, Germany; German Center for  
8 Infection Research (DZIF), Standort Hamburg-Borstel-Luebeck-Riems

9 <sup>2</sup> Health Protection Authority, Luebeck, Germany

10 <sup>3</sup> Institute of Medical Sociology, Centre for Health and Society, Medical Faculty and University Hospital,  
11 Heinrich-Heine-University, Düsseldorf, Germany

12 <sup>4</sup> Institute for Experimental Immunology, affiliated to EUROIMMUN Medizinische Labordiagnostika AG,  
13 Luebeck, Germany

14  
15 † These authors have contributed equally to this work and share first authorship

16 †† These authors have contributed equally to this work and share last authorship

## 17 18 **Correspondence**

19 Alexander Mischnik, M. D.

20 Health Protection Authority, Sophienstr. 2-8, D-23560 Luebeck, Germany

21 E-Mail: alexander.mischnik@luebeck.de

## 22 23 **Competing interests**

24 All authors declare no conflict of interest (including financial, commercial, political or personal).

## 25 26 **Acknowledgment**

27 The authors would like to thank all participants for sharing their data and all personnel contributing to obtaining  
28 the results.

## 29 30 **Funding statement**

31 The study was funded by the City of Luebeck and EUROIMMUN AG

## 32 33 **Ethical statement**

34 The ethical committee of the University of Luebeck approved the study (ref. 20-339)

## 35 36 **Keywords**

37 COVID-19, SARS-CoV-2, immunoglobulin, IgG, seroprevalence, interferon-gamma release assay, IGRA

## 38 39 **Abbreviations**

40 COVID-19: coronavirus disease 19; CI: confidence interval; ELISA: Enzyme-linked Immunosorbent Assay; IgG:  
41 immunoglobulin G; IGRA: Interferon-Gamma-Release Assay; rt-PCR: real-time polymerase chain reaction;  
42 SARS-CoV-2: Severe acute respiratory syndrome coronavirus 2

43 **Abstract**

44 Characterisation of the naturally acquired B and T cell immune responses to SARS-CoV-2 is important for the  
45 development of public health and vaccination strategies to manage the burden of COVID-19 disease. We  
46 conducted a prospective, longitudinal analysis in COVID-19 recovered patients at various time points over a 10-  
47 month period in order to determine how circulating antibody levels and interferon-gamma (IFN- $\gamma$ ) release by  
48 peripheral blood cells change over time following natural infection.

49 From March 2020 till January 2021, we enrolled 412 adults mostly with mild or moderate disease course. At each  
50 study visit, subjects donated peripheral blood for testing of anti-SARS-CoV-2 IgG antibodies and IFN- $\gamma$  release  
51 after SARS-CoV-2 S-protein stimulation. Anti-SARS-CoV-2 IgG antibodies were identified in 316/412 (76.7%)  
52 of the patients and 215/412 (52.2%) had positive neutralizing antibody levels. Likewise, in 274/412 (66.5 %)  
53 positive IFN- $\gamma$  release and IgG antibodies were detected. With respect to time after infection, both IgG antibody  
54 levels and IFN- $\gamma$  concentrations decreased by about half within three hundred days. Statistically, IgG and IFN- $\gamma$   
55 production were closely associated, but on an individual basis we observed patients with high antibody titres but  
56 low IFN- $\gamma$  levels and vice versa.

57 Our data suggest that immunological reaction is acquired in most individuals after infection with SARS-CoV-2  
58 and is sustained in the majority of patients for at least 10 months after infection. Since no robust marker for  
59 protection against COVID-19 exists so far, we recommend utilizing both, IgG and IFN- $\gamma$  release for an individual  
60 assessment of immunity status.

## 61 Introduction

62 Infection with severe acute respiratory syndrome coronavirus 2 (SARS-CoV-2) leads to various symptoms,  
63 including cough, fever, cold, and loss of smell and taste. The course of the disease varies in symptoms and severity,  
64 from asymptomatic infections to severe pneumonia with lung failure and death. Manifestation indices are  
65 estimated to be 55-85%<sup>1</sup>. About 48 % of patients are women, and 52 % are men. In Germany, 2.6 % of all persons  
66 with confirmed SARS-CoV-2 infections died in connection with a COVID-19 illness. The main risk factors for  
67 death are age and comorbidities like diabetes or obesity. The diagnosis is based on clinical grounds and proven by  
68 virus detection through RT-PCR in respiratory samples.

69 SARS-CoV-2 infects human cells by using the viral spike (S) protein, which binds to the angiotensin converting  
70 enzyme-2 (ACE-2) receptor on host cells<sup>2</sup>. The S-Protein is the immunodominant epitope that induces B and T-  
71 cell responses upon natural infection<sup>3,4</sup> and vaccination<sup>5</sup>. Antibodies target the virus and can block infection and,  
72 thus, are an essential correlate of protection<sup>6,7</sup>. Likewise, T-lymphocytes contribute to protection through specific  
73 interactions with B-cells and cytokine responses<sup>8</sup>.

74 In the present study, we analysed the long-term course of the immune response with respect to serum IgG  
75 antibodies and the capacity of peripheral blood cells to produce interferon-gamma (IFN- $\gamma$ ) upon viral S-Protein  
76 specific stimulation. Based on previous experience of our group<sup>9</sup> with the low diagnostic significance of IgA and  
77 IgM antibodies in the long-term course of infection, we deliberately determined only IgG antibodies.

78 The study was performed from May 2020 until January 2021. None of the study participants had received a  
79 COVID-19 vaccine.

80

81

## 82 Materials and Methods

### 83 Study area

84 The study was performed on patients which were notified as index cases to the Health Protection Authority of the  
85 City of Luebeck/Germany (approx. 220,000 inhabitants, population density approx. 1,000/sqm). With the  
86 exception of two major outbreak-related periods in December 2020 and mid-January 2021 the city has mostly been  
87 a low-incidence region, when compared to Germany as a whole (Fig. 1).

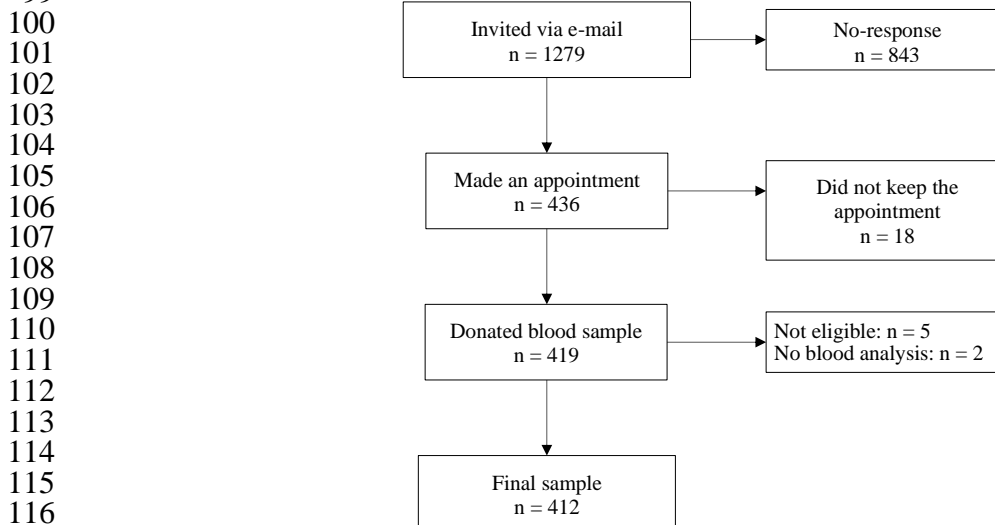
88

### 89 Study population

90 The data presented here were obtained from the sera of patients that were notified to the local Health Protection  
91 Authority as being SARS-CoV-2 positive by PCR irrespective of the clinical manifestation. All of them recovered  
92 from the disease without hospitalization. In total, 1,279 patients were invited by e-mail to participate. 111 of these  
93 were first infected in the “first wave” of the pandemic between February 27, and July 31, 2020. The results of the  
94 initial antibody profiling from these patients have been published elsewhere.<sup>15</sup> The remaining 1,168 patients that  
95 were invited were diagnosed by SARS-CoV-2 PCR between August 1, 2020 and December 31, 2021. From the  
96 invited patients, 436 responded to the invitation and, finally, 412 of them donated blood for analysis after having  
97 given written informed consent (see flowchart).

98

99



118

119

At the study visit, a questionnaire was filled in to determine clinical comorbidities (such as obesity, diabetes, autoimmune diseases, hypertension).

120 COVID-19 disease severity was categorized based on the RKI severity definitions (RKI: klinische Klassifikation  
121 der COVID-19 Infektion adaptiert nach WHO Therapeutics and COVID-19: living  
122 guideline, [https://www.rki.de/DE/Content/Kommissionen/Stakob/Stellungnahmen/Stellungnahme-Covid-  
123 19\\_Therapie\\_Diagnose.pdf?\\_\\_blob=publicationFile](https://www.rki.de/DE/Content/Kommissionen/Stakob/Stellungnahmen/Stellungnahme-Covid-19_Therapie_Diagnose.pdf?__blob=publicationFile)) and an additional category for patients that did not  
124 experience any symptoms of COVID-19 during the infection:

- 125 - asymptomatic
- 126 - mild (absence of pneumonia)
- 127 - moderate (signs of non-severe pneumonia)
- 128 - severe (severe pneumonia, defined as fever and bilateral pulmonary infiltrates and either respiratory rate >  
129 30/min, severe respiratory distress or SpO<sub>2</sub> < 90-94 % on room air)
- 130 - critical (acute respiratory distress syndrome; hyperinflammation in conjunction with sepsis or septic  
131 shock and multiple organ failure)

### 132 133 **Test procedures**

#### 134 *Detection of SARS-CoV-2*

135 Nasopharyngeal swabs were taken from suspected COVID-19 cases by trained personnel either in general practice  
136 (GP) or in a “drive-in” swab centre run by the Health Protection Authority between March 2020 and December  
137 2020. Swabs were stored in stabilization media and laboratory-processed within 4 hours. SARS-CoV-2 RNA was  
138 detected by using an automated one step real-time rt-PCR (RIDA<sup>®</sup>GENE SARS-CoV-2 RUO Test; R-Biopharm  
139 AG, Darmstadt, Germany; E-gene amplification) run on a RIDA<sup>®</sup>CYCLER according to the manufacturer’s  
140 instruction.

#### 141 142 *Detection of anti-SARS-CoV-2 S1-Protein IgG antibodies*

143 Serum Anti-SARS-CoV-2 IgG were detected by automated Enzyme-linked Immunosorbent Assay (product EI  
144 2606-9601 G; EUROIMMUN; <https://www.euroimmun.com>) according to the manufacturer’s instructions.  
145 Signal-to-cut-off (SCO) ratio was calculated as extinction value (450 nm) of patient sample divided by extinction  
146 level of calibrator. A ratio between 0 and <0.8 was considered as negative, ≥ 0.8 to < 1.1 as borderline and a ratio  
147 ≥ 1.1 as positive. Assay specificity using pre-COVID-19 samples was calculated by the manufacturer as 100 %.

#### 148 149 *Detection of neutralizing antibodies*

150 For detection of neutralizing antibodies, a semi-quantitative surrogate virus neutralization test (NeutraLISA from  
151 Euroimmun, Product No. 2606-4) was applied, through which the binding of SARS-CoV-2 S1/receptor-binding-  
152 domain RBD to ACE2 receptors of the recombinant human host cells is determined. In the first reaction step,  
153 samples and controls are incubated with soluble biotinylated ACE. If neutralizing antibodies are present in the  
154 sample, they compete with the ACE-receptor for the binding site of the SARS-CoV-2 S1/RBD proteins. Unbound  
155 ACE is removed through washing. To detect the bound ACE, a second incubation step with peroxidase-labeled  
156 streptavidin is performed, which catalyzes a color reaction. The intensity of the formed color is inversely  
157 proportional to the concentration of neutralizing antibodies in the sample. The inhibition (% IH) is calculated to  
158 the formula: % IH = 100-(extinction of patient sample x 100/extinction of blank). Values below 20 are considered  
159 negative, ≥ 20 to < 35 as borderline and ≥ 35 as positive. According to the manufacturer, sensitivity and specificity  
160 are calculated as 95.9% and 99.7%, respectively.

#### 161 162 *Detection of T-cell-activity*

163 Besides B cells and antibodies, T lymphocytes and cytokines are instrumental for the shaping of the specific acute  
164 and memory immune response to SARS-CoV-2<sup>10</sup>. We sought for an easy-to-perform test that may be used as a  
165 marker for T cell responses by determining the capacity to release Interferon-gamma (IFN-γ) upon specific  
166 stimulation. 7 mL blood was collected in heparinized blood collection tubes. Within 6 hours 0.5 mL of the blood  
167 was transferred into three different tubes. One positive control tube (containing a mitogen), one SARS-CoV-2  
168 specific stimulation tube (coated with antigens based on the SARS-CoV-2 spike protein) and one blank tube  
169 without antigens to measure one’s individual IFN-γ background (product ET 2606-3003,  
170 <https://www.euroimmun.com>). After 20 to 24 hours of incubation at 37 °C, the tubes were centrifuged at 12.000  
171 rfc for 10 minutes. IFN-γ concentrations were measured in the supernatants by IFN-γ ELISA according to the  
172 manufacturer’s instructions (product EQ 6841-9601, EUROIMMUN; <https://www.euroimmun.com>). When the  
173 positive control tube shows a reaction (to confirm sufficient quantity and viability of immune cells) the IFN-γ  
174 concentration from the specific stimulation tube (after subtracting the IFN-γ background) was used to quantify  
175 specific T cell responses. Values ≥ 100 mIU/mL were interpreted as borderline, ≥ 200 mIU/mL as positive. It has  
176 to be mentioned that all IFN-γ concentrations above the measurement range were replaced by the numerical value  
177 of 2500 mIU/ml. A further quantification was not possible.

178 *Statistical analysis*

179 We used standard descriptive statistics to summarize data. Categorical data were presented as frequencies and  
180 percentages and continuous variables were expressed as the mean with  $\pm$  standard deviation (SD). Categorical  
181 variables were compared using Fisher's exact test and continuous variables were compared using the Mann-  
182 Whitney U test. Pearson's correlation coefficient (Pearson's  $R$ ) and p-value were calculated to evaluate the  
183 correlation between variables, where a Person's  $R$  between 0-0.19 is regarded as very weak, 0.2-0.39 as weak,  
184 0.40-0.59 as moderate, 0.6-0.79 as strong and 0.8-1 as very strong correlation<sup>11</sup>. To identify potential factors  
185 associated with SARS-CoV-2 seropositivity (yes/no), a binary logistic regression analysis using the logitem  
186 command in Stata (StataCorp, College Station, TX, version 15) to correct for the test's specificity and sensitivity  
187 was performed. We estimated the models with the following explanatory variables: comorbidity, COVID-19  
188 disease course and time since the positive COVID-19 test by rt-PCR. Two separate models were run to account  
189 for potential confounding. Model 1 included an unadjusted analysis and Model 2 included age and sex-adjusted  
190 analysis. Confounding occurs in epidemiological research when the relationship between a given exposure and a  
191 specific outcome (i.e., seropositivity) is distorted (confused) by the influence of a third variable or group of  
192 variables (confounders). In the present analysis, age and sex were considered confounders if they changed the  
193 coefficient of the significant variables by  $>10\%$ . 95% confidence intervals for odds ratios were calculated and a p-  
194 value of 0.05 was considered significant. Statistical analyses using were conducted using Stata version 15.0.

195

196

197 **Results**

198 *Sociodemographic characteristics of the study participants*

199 The age of the patients was between 16 and 83 years with a mean age of 44.5 years (SD:  $\pm 16$ ); (Fig. 2a). 235  
200 patients (57 %) were female and 177 (43 %) were male (Fig. 2b). Approx. 40 % of the patients reported at least  
201 one comorbidity such as obesity, diabetes, autoimmune diseases or hypertonus (Fig. 2c). Around 90 % of the  
202 participants reported symptoms during the infection time, 8.9 % had no symptoms. About half of the patients were  
203 classified as having had mild disease, 36 % as moderate and only 15 patients (3.6 %) had severe disease, but no  
204 requirement for hospitalization (Fig. 2d). At the study time in January 2021, 41.5 % of the patients about three  
205 months after infection reported still to have everyday life restricting symptoms such as fatigue (21 %), disturbance  
206 of smell and/or taste (12.5%) and lack of concentration (8 %). Nearly 13 % of respondents described more than  
207 one persisting symptom (data not shown).

208

209 *IgG antibodies over time*

210 There was a wide inter-individual variation in the antibody levels, supporting the observation from our earlier  
211 study<sup>9</sup>. Seropositivity was detected 16 days after the confirmed SARS-CoV-2 diagnosis by PCR (Fig. 3). Given  
212 that antibody ratios  $\geq 1.1$  are defined as positive, it is noteworthy that 16 % (66/412) of the participants did not  
213 develop humoral antibodies, despite SARS-CoV-2 detection by PCR. Clinically, the seronegative patients were  
214 either asymptomatic, in category 1 (mild) or 2 (moderate). The antibodies had S-protein neutralizing capacity.  
215 Most of the sera from the 346 IgG-positive patients (ratio  $\geq 1.1$ ), had neutralizing capacity (Inhibition index  $\geq 20$ )  
216 215/346 (62.1%) participants were neutralizing antibody positive (Inhibition index  $\geq 20$ ) and 88 (25.4%)  
217 participants showed borderline results.

218

219 Fig. 3 shows the antibody levels for IgG in relation to the days after PCR-positivity for the entire sample (n=412).  
220 It can be clearly seen that the antibody levels decline over time. There was a moderate but significant negative  
221 linear relationship between IgG ratio and the time passed since the positive SARS-CoV-2 diagnosis ( $r = -0.3$ ,  $p <$   
222  $0.001$ ) (Fig. 3).

223 When we sought for factors that were associated with the presence of antibodies, it became clear that disease  
224 severity was positively associated, whereas reported comorbidities had no impact on antibody development (Model  
225 I; OR: 1.69, 95% CI: 1.10 – 2.84; Table 2). As could be seen in Fig. 3, we also found a significant association  
226 between the elapsed time of PCR testing and SARS-CoV-2 seropositivity. The likelihood to be seropositive  
227 weaned over time with an odds ratio (OR) of 0.38 in the time period of 60 - 119 days since PCR-positivity. The  
228 probability further decreased after 120 days to an OR of 0,19 (Model I; OR: 0.19, 95%CI: 0.09 – 0.37) (Table 2).  
229 After adjusting for age and sex as potential confounders, the variables (i.) moderate to severe disease course (Model  
230 II; OR: 1.77, 95% CI: 1.04 – 3.01) and (ii.) time of diagnosis remained significantly associated with being  
231 seropositive (Model II; OR: 0.18, 95%CI: 0.09 – 0.37). Furthermore, the estimates did not significantly change  
232 when adjusting for sex and age. Thus, in the present analysis both age and sex are not confounders. Although not  
233 statistically significant, a tendency for a greater odd of being seropositive were seen among participants having at  
234 least one comorbidity (Model II; OR: 1.07, 95% CI: 0.63 – 1.85) or were of advanced age (Model II; OR: 2.91,  
235 95% CI: 0.60 – 9.65). For female participants the odds ratio for being seropositive was almost equal to males  
236 (Model II; OR, 1.05, 95%CI: 0.64 – 1.73), suggesting that being seropositive is equally likely to occur in both  
237 female and male participants.

238 The odds of having antibodies with neutralizing capacity were almost two-fold higher in participants who had a  
239 moderate to severe COVID-19 disease course as compared to those with none or mild disease (Model I; OR. 1.96,  
240 95% CI: 1.18 – 2.27; Table 3). Similar to IgG SARS-CoV-2 antibodies, elapsed time since the confirmed COVID-  
241 19 diagnosis was inversely associated with the probability of expressing neutralizing antibodies with a clear  
242 weaning after 60 to 119 days and even more after 120 days (Model I, OR. 0.15, 95% CI: 0.08 – 0.31). Individuals  
243 for which the time since SARS-CoV-2 testing was more than 120 days ago were less likely to have neutralizing  
244 antibodies (OR: 0.14; 95% CI: 0.07 – 0.28) compared to those with a diagnosis made between 0-59 days apart  
245 from the time of the serological survey. For female participants, although not statistically significant, the odds ratio  
246 for having neutralizing antibodies was slightly decreased (Model II; OR, 0.94; 95% CI: 0.58 – 1.52). The odds  
247 ratios in Model II did not significantly change when adjusting for age and sex, suggesting that both variables are  
248 not confounding the association between disease course, time since rt-PCR testing and having SARS-CoV-2  
249 neutralizing antibodies.

250 The mean antibody ratio was highest in the first 1-3 months in patients with a severe disease course. In  
251 asymptomatic or mild symptomatic patients, the highest mean antibody level, although at a lower level, was also  
252 observed 1-3 months post COVID-19 infection, with a declining trend in the subsequent time windows (Table 4.)  
253 The data thus clearly show that antibody expression is related to the severity of disease and that antibody levels  
254 fade continuously within approx. 300 days (Fig. 3, Table 4).

#### 255 256 *T-cell-activity over time*

257 Since T-cells are instrumental for the development of the S-protein reactive B cell activity, we determined T-  
258 lymphocyte activity. We chose to determine the induction and release of IFN- $\gamma$  upon S-protein specific stimulation.  
259 This assay reflects an easy-to-perform summarized image of T-lymphocytes-activity without considering all  
260 subgroups of T-lymphocytes or other IFN- $\gamma$  producing cells. As can be seen in Fig. 4, 315/412 (81 %) of the PCR-  
261 positive patients had a positive IGRA test result ( $\geq 200$  mIU/ml). 62 (15 %) of the patients were negative. Like it  
262 was seen with the antibody analysis, there was strong relationship between the IFN- $\gamma$  levels and the time elapsed  
263 since the positive SARS-CoV-2 diagnosis by PCR ( $r = 0.6$ ,  $p < 0.001$ ).

264 Looking at the correlation between antibody levels and IFN- $\gamma$  concentrations, a heterogeneous picture emerged  
265 (Fig. 5). While in most cases both values were concordant, there were a considerable number of cases with high  
266 to very high IFN- $\gamma$  levels and low antibody levels and vice versa. Looking at the cloud of dots, it is striking that  
267 there appears to be a population of patients whose cells produce extremely high levels of IFN- $\gamma$  ( $> 2,500$  mIU/ml),  
268 regardless of the antibody response (Fig. 4) or the time post SARS-CoV-2 diagnosis (Fig. 3).

269  
270 In summary, in our SARS-CoV-2 PCR-positive cohort, the antibody profile was heterogeneous. In most cases,  
271 antibodies could be detected between 16 and 73 days after the determination of a SARS-CoV-2 infection via PCR  
272 from a nasopharyngeal swab. The antibody levels continuously decreased over time.

273 In 90/412 patients (22 %) no significant antibody levels could be detected in 2 up to 4 consecutive analyses between  
274 day 16 and 73. As far as the IFN- $\gamma$  release is concerned, a similar picture emerged. The levels were heterogeneous  
275 and decreased over time. Noteworthy, a significant part of the patients produced very high levels of IFN- $\gamma$   
276 irrespective of the concentration of antibodies measured.

#### 277 278 279 **Discussion**

280 In the present study, we determined the development of specific humoral and cellular immune responses in  
281 outpatients recovered from SARS-CoV-2 infection, mostly with mild to moderate disease (Fig. 2). Therefore, we  
282 chose to determine serum IgG antibodies and IFN- $\gamma$  release in response to the viral spike (S) glycoprotein in view  
283 of the time that had passed since the infection.

284 In the present study about 22 % of the patients had no detectable antibodies. These data substantiate our previous  
285 finding from the first wave of the pandemic in early 2020<sup>9</sup>. On a population basis, the clinical severity of the  
286 disease was positively correlated with the level of SARS-CoV-2 neutralising antibodies (Tables 3, 4), as had been  
287 shown previously by others<sup>12</sup>. On an individual level, there was a great variability between patients. Thus, the  
288 individual level of antibodies is not of diagnostic value, for example for the assessment of patients with long-  
289 COVID syndrome, which is often associated with chronic fatigue<sup>13</sup>. As expected, in many cases the antibody levels  
290 faded over time. When compared to the first three months after infection, the mean antibody levels decayed steadily  
291 and approximately halved within 300 days (Fig. 3). Although our data do not allow a meaningful calculation of  
292 the half-life, the finding is in accordance with reports from others<sup>14, 15</sup>, who calculated the half-life of neutralizing  
293 IgG antibodies with 140 to 220 days.

294 Interestingly, after COVID vaccination neutralisation capacity was different from natural infection<sup>16</sup>.

295 Very few published data sets compare antigen-specific B-cell and T-cell immunity. We therefore examined  
296 interrelationships between IgG antibody levels and IFN- $\gamma$  release. Like with the antibody kinetics, the IFN- $\gamma$  values  
297 decayed over time after infection with similar kinetics (Fig. 4) which is in line with other works<sup>17</sup>. Unexpectedly,  
298 however, we saw a substantial number of patients with low antibody levels and extremely high IFN- $\gamma$  levels and

299 vice versa (Fig. 5). Although unlikely, it cannot be completely ruled out, that the observed T-cell reactivity was  
300 due to pre-existing memory T-cells recognizing the common cold coronaviruses, as has been described before<sup>18</sup>  
301 <sup>19</sup>. Existing T cells might be an explanation for cross reactions in an IGRA assay which could also be seen in our  
302 study<sup>20</sup>. To explain this dichotomy, a longitudinal in-depth analysis of the precise numbers and types of IFN- $\gamma$   
303 producing cells will be necessary, especially the characterization of T memory cells.  
304 Since our data and those from others show that determination of antibodies alone is not predictive for protection  
305 against SARS-CoV-2 disease, simultaneous determination of IFN- $\gamma$  may be a valuable adjunct and may also  
306 predict the time-point for possibly necessary booster vaccinations on an individual basis.  
307

### 308 *Strengths and limitations*

309 The current study has few limitations. Longitudinal data for each subject, with at least three time points per subject,  
310 would be required for more precise understanding of the kinetics of durability of SARS-CoV-2-specific  
311 antibodies. Nevertheless, the current cross-sectional data describe well the dynamics of spike-specific antibodies  
312 over 10 months and IFN- $\gamma$  release by blood T-lymphocytes at one study point. This study was not sufficiently  
313 powered to control for many variables simultaneously.  
314

### 315 **Conclusion**

316 This study shows that on average 9.8 months after detection of SARS-CoV-2 in nasopharyngeal specimen, the  
317 mean serum IgG antibodies against the viral S-protein approximately dropped to 50 % of the initial values. Most  
318 of the patients showed robust IFN- $\gamma$  production after S-protein stimulation of peripheral blood cells, indicating the  
319 importance of T lymphocytes for shaping the protective immune reaction. However, in a substantial proportion of  
320 our samples, we found low antibody levels accompanied with high IFN- $\gamma$  levels and vice versa. For future  
321 assessment of protection and possible vaccination strategies, both, determination of antibodies and IFN- $\gamma$  is  
322 recommended.  
323

### 324 **Authors' contributions**

325 J.S., I.B., JR., A.M. and W.S. wrote the article. J.S., I.B., D.Z., J.M.K. and W.S. were responsible for data analysis.  
326 S.S., T.M. and J.R. were responsible for patient recruitment, data collection and contributed to data analysis. A.M.  
327 and W.S. designed the study. All authors approved the final version of the manuscript.  
328  
329

### 330 **References**

- 331 1. Oran DP, Topol EJ. (2020). Prevalence of Asymptomatic SARS-CoV-2 Infection : A Narrative Review.  
332 *Ann Intern Med.* 173, 362-367. doi: 10.7326/M20-3012
- 333 2. Hoffmann M, Kleine-Weber H, Schroeder S, Kruger N, Herrler T, Erichsen S et al. (2020). SARS-CoV-  
334 2 Cell Entry Depends on ACE2 and TMPRSS2 and Is Blocked by a Clinically Proven Protease Inhibitor. *Cell.*  
335 181, 271-280 e278. doi: 10.1016/j.cell.2020.02.052
- 336 3. Long QX, Liu BZ, Deng HJ, Wu GC, Deng K, Chen YK et al. (2020). Antibody responses to SARS-  
337 CoV-2 in patients with COVID-19. *Nat Med.* 26, 845-848. doi: 10.1038/s41591-020-0897-1
- 338 4. Piccoli L, Park YJ, Tortorici MA, Czudnochowski N, Walls AC, Beltramello M et al. (2020). Mapping  
339 Neutralizing and Immunodominant Sites on the SARS-CoV-2 Spike Receptor-Binding Domain by Structure-  
340 Guided High-Resolution Serology. *Cell.* 183, 1024-1042 e1021. doi: 10.1016/j.cell.2020.09.037
- 341 5. Sahin U, Muik A, Derhovanessian E, Vogler I, Kranz LM, Vormehr M et al. (2020). COVID-19 vaccine  
342 BNT162b1 elicits human antibody and TH1 T cell responses. *Nature.* 586, 594-599. doi: 10.1038/s41586-020-  
343 2814-7
- 344 6. Kreer C, Zehner M, Weber T, Ercanoglu MS, Gieselmann L, Rohde C et al. (2020). Longitudinal Isolation  
345 of Potent Near-Germline SARS-CoV-2-Neutralizing Antibodies from COVID-19 Patients. *Cell.* 182, 843-854  
346 e812. doi: 10.1016/j.cell.2020.06.044
- 347 7. Zohar T, Alter G. (2020). Dissecting antibody-mediated protection against SARS-CoV-2. *Nat Rev*  
348 *Immunol.* 20, 392-394. doi: 10.1038/s41577-020-0359-5
- 349 8. Li J, Wang J, Kang AS, Sacitharan PK. (2020). Mapping the T cell response to COVID-19. *Signal*  
350 *Transduct Target Ther.* 5, 112. doi: 10.1038/s41392-020-00228-1
- 351 9. Solbach W, Schiffner J, Backhaus I, Burger D, Staiger R, Tiemer B et al. (2020). Antibody Profiling of  
352 COVID-19 Patients in an Urban Low-Incidence Region in Northern Germany. *Front Public Health.* 8, 570543.  
353 doi: 10.3389/fpubh.2020.570543
- 354 10. Chen Z, John Wherry E. (2020). T cell responses in patients with COVID-19. *Nat Rev Immunol.* 20, 529-  
355 536. doi: 10.1038/s41577-020-0402-6
- 356 11. Akoglu H. (2018). User's guide to correlation coefficients. *Turk J Emerg Med.* 18, 91-93. doi:  
357 10.1016/j.tjem.2018.08.001

- 358 12. Henss L, Scholz T, von Rhein C, Wieters I, Borgans F, Eberhardt FJ et al. (2021). Analysis of Humoral  
359 Immune Responses in Patients With Severe Acute Respiratory Syndrome Coronavirus 2 Infection. *J Infect Dis.*  
360 223, 56-61. doi: 10.1093/infdis/jiaa680
- 361 13. Godeau D, Petit A, Richard I, Roquelaure Y, Descatha A. (2021). Return-to-work, disabilities and  
362 occupational health in the age of COVID-19. *Scand J Work Environ Health.* doi: 10.5271/sjweh.3960
- 363 14. Dan JM, Mateus J, Kato Y, Hastie KM, Yu ED, Faliti CE et al. (2021). Immunological memory to SARS-  
364 CoV-2 assessed for up to 8 months after infection. *Science.* 371. doi: 10.1126/science.abf4063
- 365 15. De Giorgi V, West KA, Henning AN, Chen LN, Holbrook MR, Gross R et al. (2021). Naturally acquired  
366 SARS-CoV-2 immunity persists for up to 11 months following infection. *J Infect Dis.* doi: 10.1093/infdis/jiab295
- 367 16. Anichini G, Terrosi C, Gandolfo C, Gori Savellini G, Fabrizi S, Miceli GB et al. (2021). SARS-CoV-2  
368 Antibody Response in Persons with Past Natural Infection. *N Engl J Med.* doi: 10.1056/NEJMc2103825
- 369 17. Murugesan K, Jagannathan P, Pham TD, Pandey S, Bonilla HF, Jacobson K et al. (2020). Interferon-  
370 gamma release assay for accurate detection of SARS-CoV-2 T cell response. *Clin Infect Dis.* doi:  
371 10.1093/cid/ciaa1537
- 372 18. Mateus J, Grifoni A, Tarke A, Sidney J, Ramirez SI, Dan JM et al. (2020). Selective and cross-reactive  
373 SARS-CoV-2 T cell epitopes in unexposed humans. *Science.* 370, 89-94. doi: 10.1126/science.abd3871
- 374 19. Schulien I, Kemming J, Oberhardt V, Wild K, Seidel LM, Killmer S et al. (2021). Characterization of  
375 pre-existing and induced SARS-CoV-2-specific CD8(+) T cells. *Nat Med.* 27, 78-85. doi: 10.1038/s41591-020-  
376 01143-2
- 377 20. Le Bert N, Tan AT, Kunasegaran K, Tham CYL, Hafezi M, Chia A et al. (2020). SARS-CoV-2-specific  
378 T cell immunity in cases of COVID-19 and SARS, and uninfected controls. *Nature.* 584, 457-462. doi:  
379 10.1038/s41586-020-2550-z

380  
381

## 382 **Figures**

383 Figure 1.: COVID-19-incidence in the city of Luebeck in comparison to Germany

384

385 Figure 2.: Sociodemographic characteristics of the study participants (n=412)

386

387 Figure 3: Correlation between anti-SARS-CoV-2-neutralising antibodies and time after COVID-19 infection

388

389 Figure 4: Correlation between IGRA and time after COVID-19 infection

390

391 Figure 5: IgG antibodies versus Interferon-gamma-Release

392

393 Figure 6: Dual axis scatter plot for IgG ratios and IGRA values

394

395

## 396 **Tables**

397 Table 1. Sample characteristics (n=412)

398

399 Table 2. Factors associated with the presence of SARS-CoV-2 IgG antibodies (n=412)

400

401 Table 3. Factors associated with the presence of SARS-CoV-2 neutralizing antibodies (n=412)

402

403 Table 4. Mean antibody ratio since confirmed COVID-19 diagnosis and disease severity



**Figure 1.: COVID-19-incidence in the city of Luebeck in comparison to Germany**

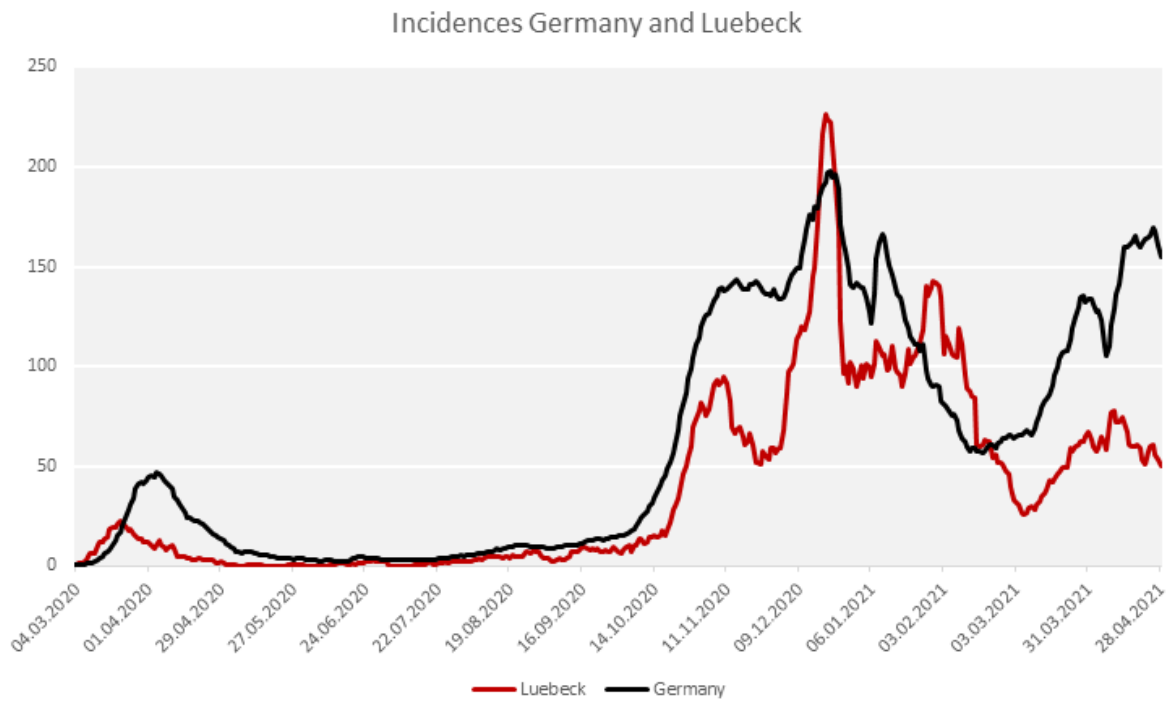


Fig. 2.

**Figure 2.:** Sociodemographic characteristics of the study participants (n=412)

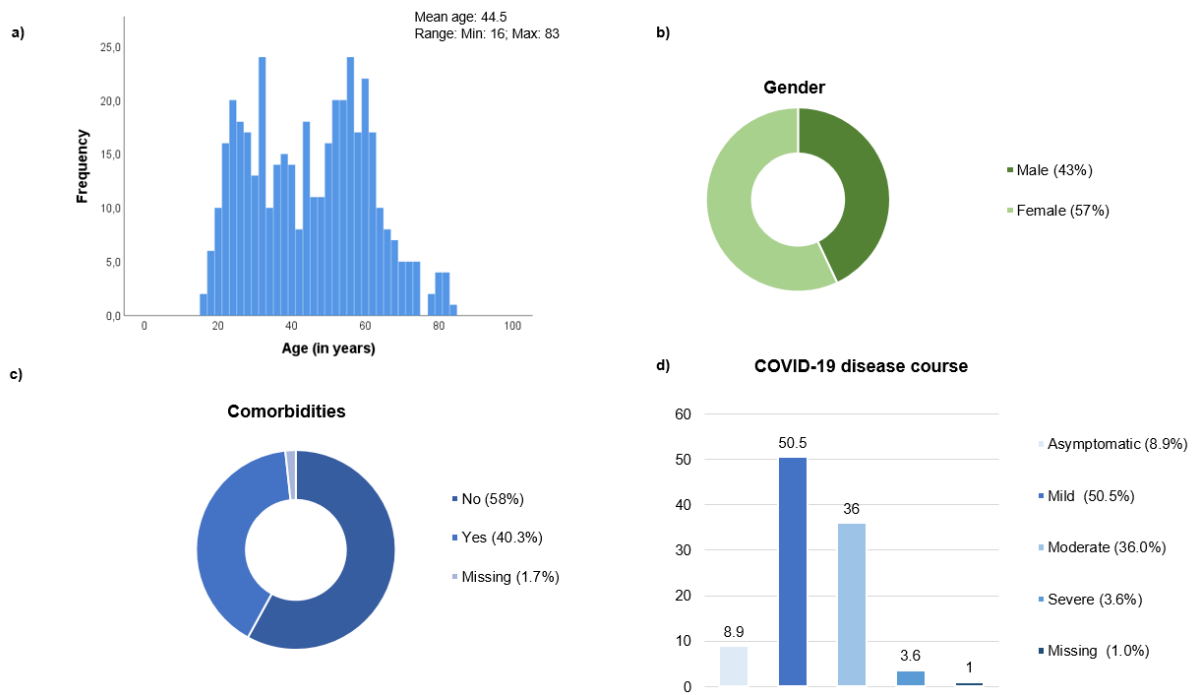
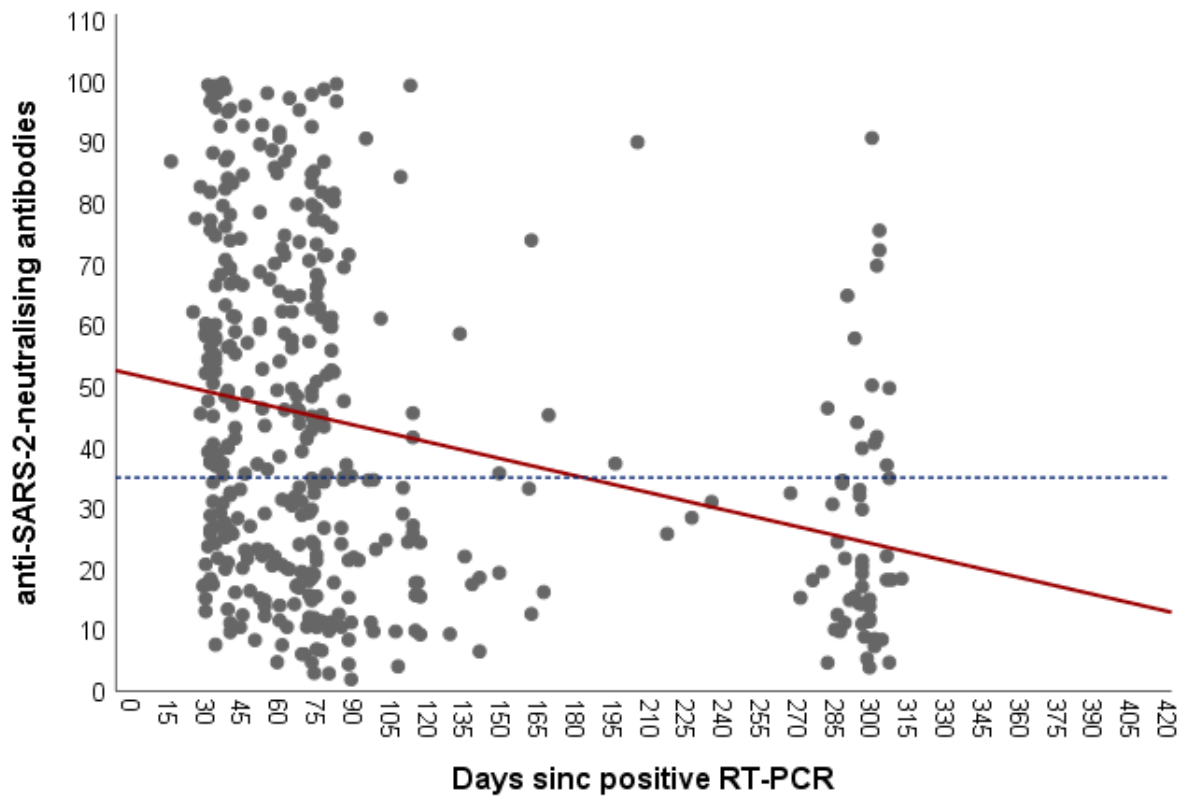


Fig. 3.

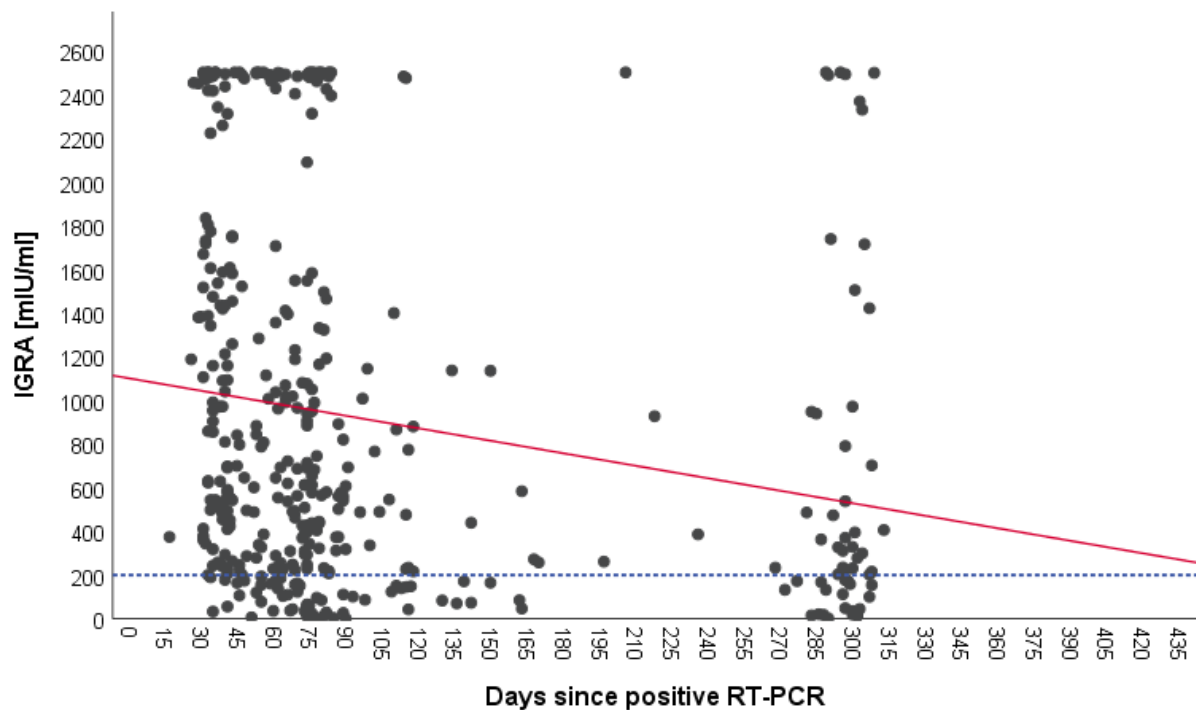
**Figure 3.: Correlation between anti-SARS-CoV-2-neutralising antibodies and time after COVID-19 infection**



**Legend:** Scatter plot for anti-SARS-CoV-2-neutralising levels at different time points. Each black dot represents one participant and the anti-SARS-CoV-2-neutralising levels. The redline represents the interpretation line, which shows the negative linear association between the anti-SARS-CoV-2-neutralising level and the days passed since the COVID-19 diagnosis. The dotted line represents reference line for the cut-off for having anti-SARS-CoV-2-neutralising antibodies, which is set at 35.

Fig. 4

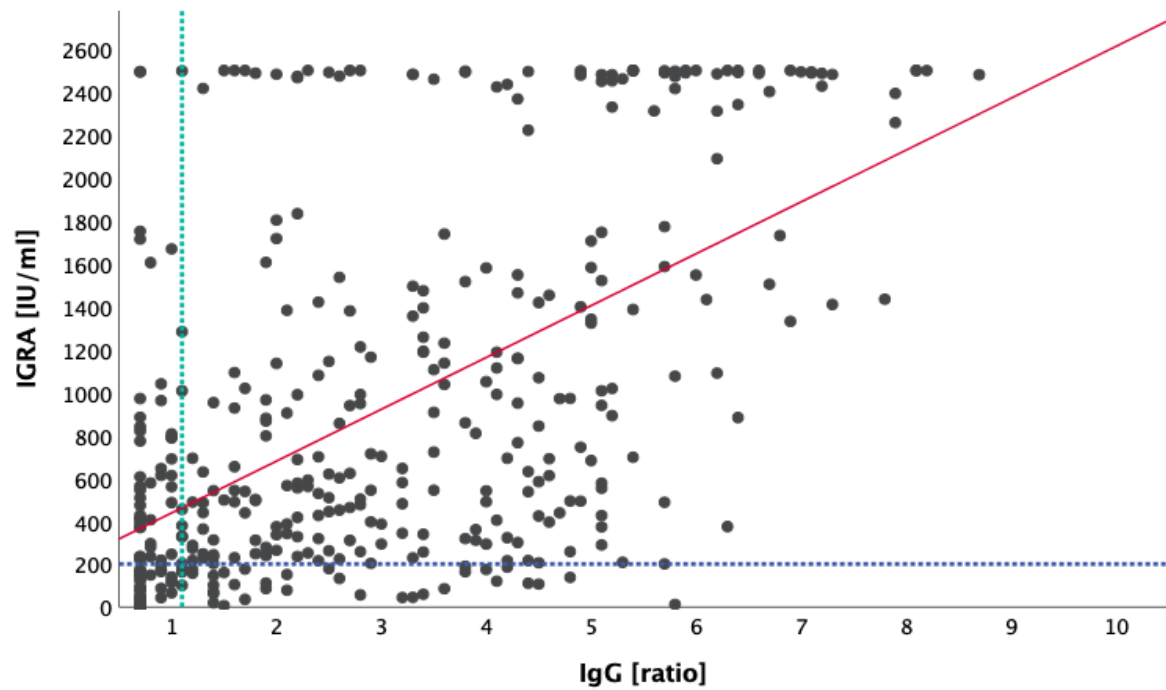
Figure 4.: Correlation between IGRA and time after COVID-19 infection



**Legend:** Scatter plot for IGRA values at different time points. Each black dot represents one participant and the IGRA mIU/ml and the redline represent the interpretation line, which shows the negative linear association between IGRA values and the days passed since the COVID-19 diagnosis. The dotted line represents the cut-off of IGRA values at 200 mIU/ml.

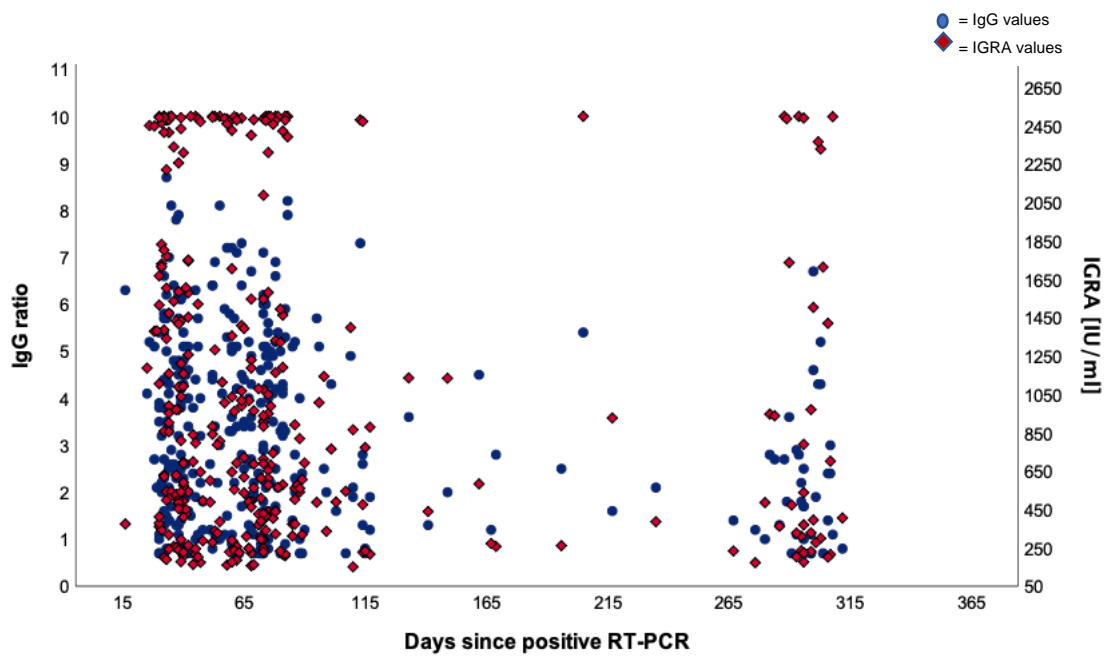
Fig. 5.

**Figure 5.: IgG antibodies versus IGRA**



**Legend:** Scatter plot for IGRA values and IgG values. Each black dot represents one participant and the respective IgG and IGRA value. The dotted line represents the cut-off for positive IgG values at 1.1 (vertical line) and for IGRA values at 200 mIU/ml (horizontal line). The red line shows the significant positive correlation between IgG and IGRA values ( $r = 0.6$ ,  $p < 0.001$ ).

**Figure 6: Dual axis scatter plot for IgG ratios and IGRA values**



Legend: The dots represent participants and their positive IgG values (cut-off at 1.1) and the diamonds represent participants and their positive IGRA values (cut-off at 200 mIU/ml).

Table 1.

<b>Table 1. Sample characteristics (n=412)</b>	
<b>Characteristics</b>	<b>N (%)</b>
<b>Gender</b>	
Male	177 (43.0)
Female	235 (57.0)
<b>Mean Age (<math>\pm</math>SD)</b>	44.5 (16.0)
<b>Comorbidity</b>	
Yes	166 (40.3)
No	239 (58.0)
Missing	7 (1.7)
<b>COVID-19 disease course</b>	
Asymptomatic	36 (8.7)
Mild disease course	209 (50.7)
Moderate disease course (fever, cough, trouble breathing)	148 (35.9)
Severe disease course	15 (3.6)
Missing	4 (1.0)
<b>SARS-CoV-2 IgG antibodies</b>	
Negative	65 (15.8)
Borderline	31 (7.5)
Positive	316 (76.7)
<b>SARS-CoV-2 neutralizing antibodies</b>	
Negative	109 (26.5)
Borderline	88 (21.4)
Positive	215 (52.2)
<b>IGRA and IgG antibodies positive</b>	274 (66.5)
<b>IGRA positive and IgG antibodies negative</b>	46 (11.2)
<b>IgG antibodies positive and IGRA negative</b>	42 (10.2)

**Table 2.**

**Table 2. Factors associated with the presence of SARS-CoV-2 IgG antibodies (n=412)**

	<b>Model I Crude OR [95% CI]</b>	<b>Model II Adjusted OR [95% CI]</b>
<b>Disease course</b>		
Asymptomatic/Mild	1.0	1.0
Moderate/Severe	<b>1.69 [1.10 – 2.84]</b>	<b>1.77 [1.04 – 3.01]</b>
<b>Comorbidity</b>		
Yes	1.0	1.0
No	1.06 [0.64 – 1.75]	1.07 [0.63 – 1.85]
<b>Time since positive RT-PCR</b>		
0-59 days	1.0	1.0
60-119 days	<b>0.38 [0.21 – 0.69]</b>	<b>0.35 [0.19 – 0.65]</b>
120 days and more	<b>0.19 [0.09 – 0.37]</b>	<b>0.18 [0.09 – 0.37]</b>
<b>Sex</b>		
Male	-	1.0
Female	-	1.05 [0.64 – 1.73]
<b>Age group</b>		
16-29 years	-	1.0
30-49 years	-	1.20 [0.63 – 2.32]
50-69 years	-	0.99 [0.44 – 1.64]
70 years and older	-	2.91 [0.60 – 9.65]

**Legend:** 1.0 = reference category; OR: Odd Ratio; CI: Confidential Interval; Table 2 presents the unadjusted (Model I) and the age and sex-adjusted odds ratio (OR) (Model II) of seropositivity (Yes/No) by participant characteristics. The odds ratio was calculated to describe the risk of different groups in positive ELISA serums compared with non-positive ELISA sera. n = 412.



Table 3

**Table 3. Factors associated with the presence of SARS-CoV-2 neutralizing antibodies (n=412)**

	<b>Model I Crude OR [95% CI]</b>	<b>Model II Adjusted OR [95% CI]</b>
<b>Disease course</b>		
Asymptomatic/Mild	1.0	1.0
Moderate/Severe	<b>1.96 [1.18 – 2.27]</b>	<b>2.07 [1.23 - 3.47]</b>
<b>Comorbidity</b>		
Yes	1.0	1.0
No	1.39 [0.85 – 2.28]	1.34 [0.79 – 2.27]
<b>Time since positive RT-PCR</b>		
0-59 days		1.0
60-119 days	<b>0.39 [0.22 – 0.70]</b>	<b>0.35 [0.14 – 0.63]</b>
120 days and more	<b>0.15 [0.08 – 0.31]</b>	<b>0.14 [0.07 – 0.28]</b>
<b>Sex</b>		
Male		1.0
Female		0.94 [0.58 – 1.52]
<b>Age group</b>		
16-29 years		1.0
30-49 years		1.02 [0.55 – 1.89]
50-69 years		0.93 [0.53 – 1.78]
70 years and older		2.56 [0.84 – 10.11]

**Legend:** 1.0 = reference category; OR: Odd Ratio; CI: Confidential Interval; Table 3 presents the unadjusted (Model I) and the age and sex-adjusted odds ratio (OR) (Model II) of having neutralizing antibodies (Yes/No) by participant characteristics. The odds ratio was calculated to describe the factors of different groups in positive neutralizing antibody assays compared with negative neutralizing antibody assays.

Table 4.

**Table 4. Mean antibody ratio since confirmed COVID-19 diagnosis and disease severity**

<b>Disease course</b>	<b>Days since confirmed COVID-19 diagnosis</b>	
	<b>1-3 months</b>	<b>3 and more months</b>
	<b>Mean (<math>\pm</math>SD)</b>	<b>Mean (<math>\pm</math>SD)</b>
Asymptomatic/ Mild	3.38 (2.56)	1.78 (1.53)
Moderate/Severe	4.28 (2.22)	2.26 (1.87)