

Supplemental Material

Table of Contents

<i>Supplemental Methods</i>	1
<i>Supplemental Results</i>	4
Supplemental Figure Legends	4
Supplemental Figure 1	5
Supplemental Figure 2	7
Supplemental Figure 3	8
Supplemental Figure 4	9
Supplemental Figure 5	10
Supplemental Figure 6	11
Supplemental Figure 7	12
Supplemental Table 1	13
Supplemental Table 2	14
Supplemental Table 3	15
Supplemental Table 4	16
Supplemental Table 5	18
<i>Supplemental Acknowledgements</i>	19
<i>References</i>	22

Supplemental Methods

TOPMed Studies

The TOPMed study population consisted of participants from 9 NHLBI cohorts: Atherosclerosis Risk in Communities Study (ARIC), Genetics of Cardiometabolic Health in the Amish Study (Amish), Mount Sinai BioMe Biobank (BioMe), Cleveland Family Study (CFS), Cardiovascular Health Study (CHS), Framingham Heart Study (FHS), Jackson Heart Study (JHS), Multi-Ethnic Study of Atherosclerosis (MESA) and Women’s Health Initiative (WHI). All participants provided written informed consent, and all participating studies obtained study approval from their local institutional review boards. Details pertaining to the local institutional review boards, ethical statements and institutional review board approval status are summarized in the table below.

TOPMed Parent Study	Principal Investigators	TOPMed Accession Number	Parent Study Consent Groups	Ethics statement	Review Status
Amish	Braxton D. Mitchell	phs000956	Amish:HMB-IRB-MDS	All study protocols were approved by the institutional review board at the University of Maryland Baltimore. Informed consent was obtained from each study participant.	Approved
ARIC	Eric Boerwinkle	phs001211	ARIC:DS-CVD-IRB/ ARIC:HMB-IRB	The ARIC study has been approved by the Institutional Review Boards (IRB) of all participating institutions, including the IRBs of the University of Minnesota, Johns Hopkins University, University of North Carolina, University of Mississippi Medical Center, and Wake Forest University. All participants gave written informed consent in each one of the study visits.	Approved
BioMe	Ruth J.F. Loos	phs001644	BioMe:HMB-NPU	The BioMe cohort was approved by the Institutional Review Board at the Icahn School of Medicine at Mount Sinai. All BioMe participants provided written, informed consent for genomic data sharing.	Approved

CFS	Susan Redline	phs000954	CFS:DS-HLBS-IRB-NPU	Cleveland Family Study was approved by the Institutional Review Board (IRB) of Case Western Reserve University and Mass General Brigham (formerly Partners HealthCare). Written informed consent was obtained from all participants.	Approved
CHS	Bruce Psaty	phs001368	CHS:DS-CVD-MDS/ CHS:DS-CVD-NPU-MDS/ CHS:HMB-MDS/ CHS:HMB-NPU-MDS	All CHS participants provided informed consent, and the study was approved by the Institutional Review Board [or ethics review committee] of University Washington.	Approved
FHS	Vasan S. Ramachandran	phs000974	FHS:HMB-IRB-MDS/ FHS:HMB-IRB-NPU-MDS	The Framingham Heart Study was approved by the Institutional Review Board of the Boston University Medical Center. All study participants provided written informed consent.	Approved
JHS	Adolfo Correa	phs000964	JHS:DS-FDO-IRB/ JHS:DS-FDO-IRB-NPU/ JHS:HMB-IRB/ JHS:HMB-IRB-NPU	The JHS study was approved by Jackson State University, Tougaloo College, and the University of Mississippi Medical Center IRBs, and all participants provided written informed consent.	Approved
MESA	Jerome I Rotter	phs001416	MESA:HMB/ MESA:HMB-NPU	All MESA participants provided written informed consent, and the study was approved by the Institutional Review Boards at The Lundquist Institute (formerly Los Angeles BioMedical Research Institute) at Harbor-UCLA Medical Center, University of Washington, Wake Forest School of Medicine, Northwestern University, University of Minnesota, Columbia University, and Johns Hopkins University.	Approved
WHI	Charles Kooperberg	phs001237	WHI:HMB-IRB/ WHI:HMB-IRB-NPU	All WHI participants provided informed consent and the study was approved by the Institutional Review Board (IRB) of the Fred Hutchinson Cancer Research Center.	Approved

QT Interval Measurement

In the UKBB, QT intervals were obtained from resting 12-lead ECGs or 3-lead ECGs obtained 15 seconds prior to exercise in individuals who underwent bicycle exercise testing. For every TOPMed substudy, QT intervals were extracted from resting 12-lead ECGs obtained closest to the time of DNA collection. Heart rate corrected QT intervals were calculated using the Bazett formula, defined as $QTc = \frac{QT(ms)}{\sqrt{RR}(s)}$.

Rare Variant Annotation in TOPMed

WGS quality control was performed on TOPMed data included in Freeze 6. Details on sequencing methods, variant calling and initial sequencing data quality control have been previously described by the TOPMed Informatics Research Center.¹ Briefly, WGS was performed at 30X sequencing depth, reads were aligned to human genome build GRCh38, genotype calling was performed jointly across studies, and followed by initial sample quality control. Additional local variant quality control was also performed for this analysis. Briefly, variants within low complexity regions, and variants with Hardy Weinberg Equilibrium p-value $\leq 1 \times 10^{-6}$, as calculated within each genetically defined ancestry, were removed.

After sample and variant QC, we annotated variants with minor allele frequency (MAF) < 0.01 using the Loss-Of-Function Transcript Effect Estimator (LOFTEE)² and dbNSFP³ to identify high-confidence loss-of-function (LOF) variants in canonical transcripts. We further subset to variants within genes that comprise the Invitae LQTS clinical genetic testing panel: *ANK2*, *CACNA1C*, *CALM1*, *CALM2*, *CALM3*, *CAV3*, *KCNE1*, *KCNE2*, *KCNH2*, *KCNJ2*, *KCNQ1*, *SCN5A* and *TRDN*.⁴ LOF variants within *SCN5A* were excluded as they are mechanistically not expected to be associated with prolongation of the QT interval.

We also identified carriers of pathogenic or likely pathogenic variants using the ClinVar database.⁵ ClinVar is a public archive of reports of human sequence variation and their relationships with phenotypes. We downloaded entries from <https://ftp.ncbi.nlm.nih.gov/pub/clinvar/> on 11/28/2020, and subset to variants submitted by commercial genetic testing laboratories with most recent assertions after 2015. Entries in ClinVar classify variants as “Pathogenic”, “Likely Pathogenic”, “Uncertain Significance”, “Likely Benign” and “Benign” in accordance with the American College of Medical Genetics and Genomics and Association for Molecular Pathology guidelines.⁶ Variants with MAF < 0.01 were annotated with the ClinVar dataset to identify pathogenic or likely pathogenic variants within the TOPMed dataset. Again, we subset to variants in canonical transcripts within the genes listed above.

Supplemental Results

Supplemental Figure Legends

Supplemental Figure 1 A. United Kingdom Biobank Flow Chart. B. TOPMed Flow Chart. AV: atrioventricular; WGS: whole genome sequencing.

Supplemental Figure 2. Quantile-Quantile Plot for QTc Interval GWAS.

Supplemental Figure 3. Association of QTc Polygenic Risk Score with QTc Interval in the TOPMed Cohort.

Supplemental Figure 4. (A) Variation in the Predicted QTc Across Percentiles of the Polygenic Risk Score stratified by Putative Pathogenic Rare Variant Carrier Status in all long QT Syndrome genes Excluding Heterozygous Carriers of *TRDN* Rare Variants. (B) Multivariable Association of Putative Pathogenic Rare Variant Carrier Status Excluding Heterozygous Carriers of *TRDN* Rare Variants Across Tertiles of QTc Polygenic Risk Score. Low, intermediate and high PRS strata reflect first, second and third tertiles of the PRS in the study sample, respectively.

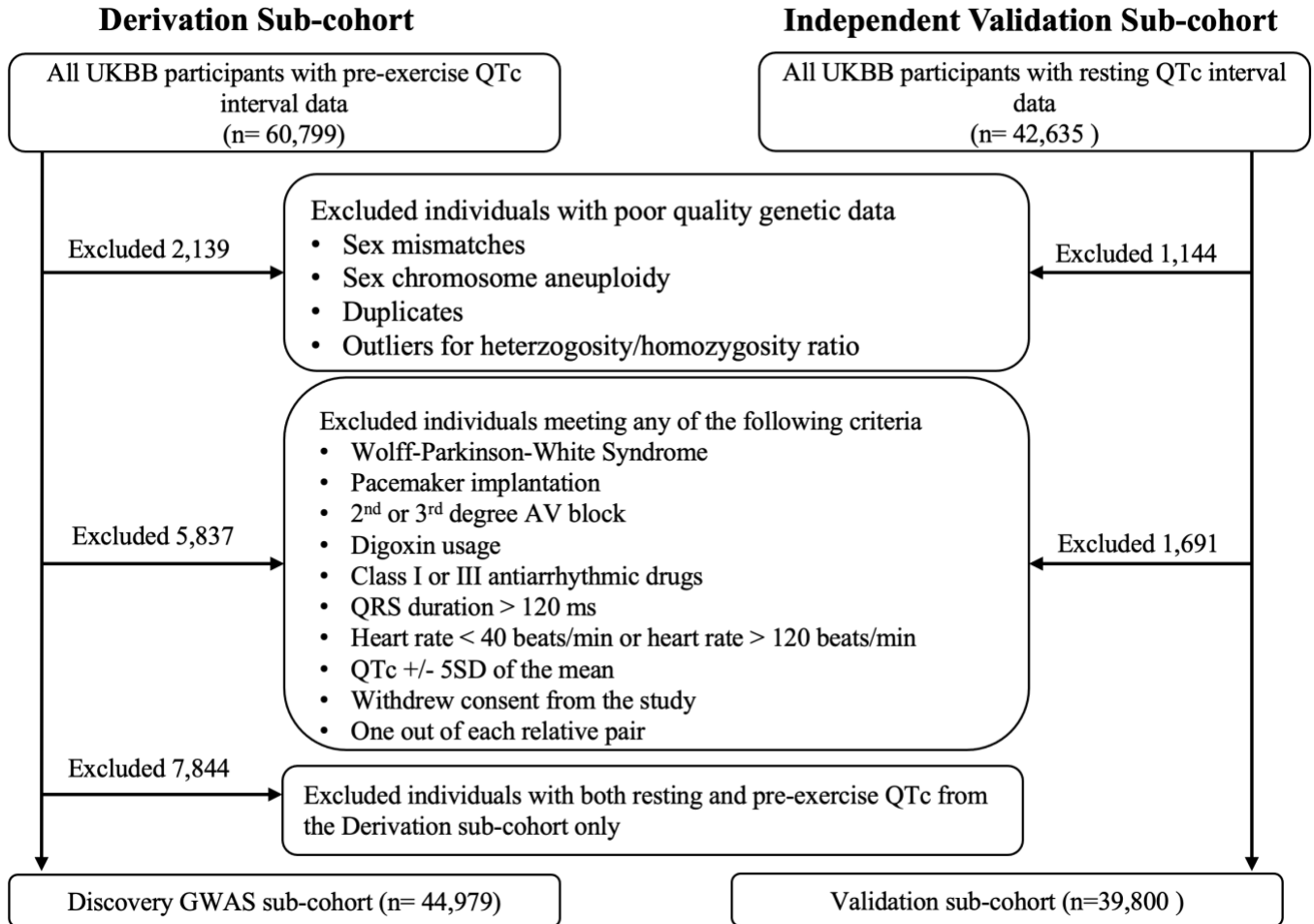
Supplemental Figure 5. Multivariable Association of Putative Pathogenic Rare Variant Carrier Status Across Tertiles of QTc Polygenic Risk Score. (A) PRS Excluding Common Variants in *NOS1AP* and *KCNE2*; (B) PRS Excluding Common Variants within ± 1 MB of Long QT Syndrome Genes; (C) PRS Excluding Common Variants of Strong Effect Size (top 10% of common variants by effect size). Low, intermediate and high PRS strata reflect first, second and third tertiles of the PRS in the study sample, respectively.

Supplemental Figure 6. Distribution of Putative Pathogenic Rare Variant Carriers in Long QT Syndrome Genes Across the Spectrum of QTc Polygenic Risk Score. Each point represents a carrier of a rare variant in the corresponding gene.

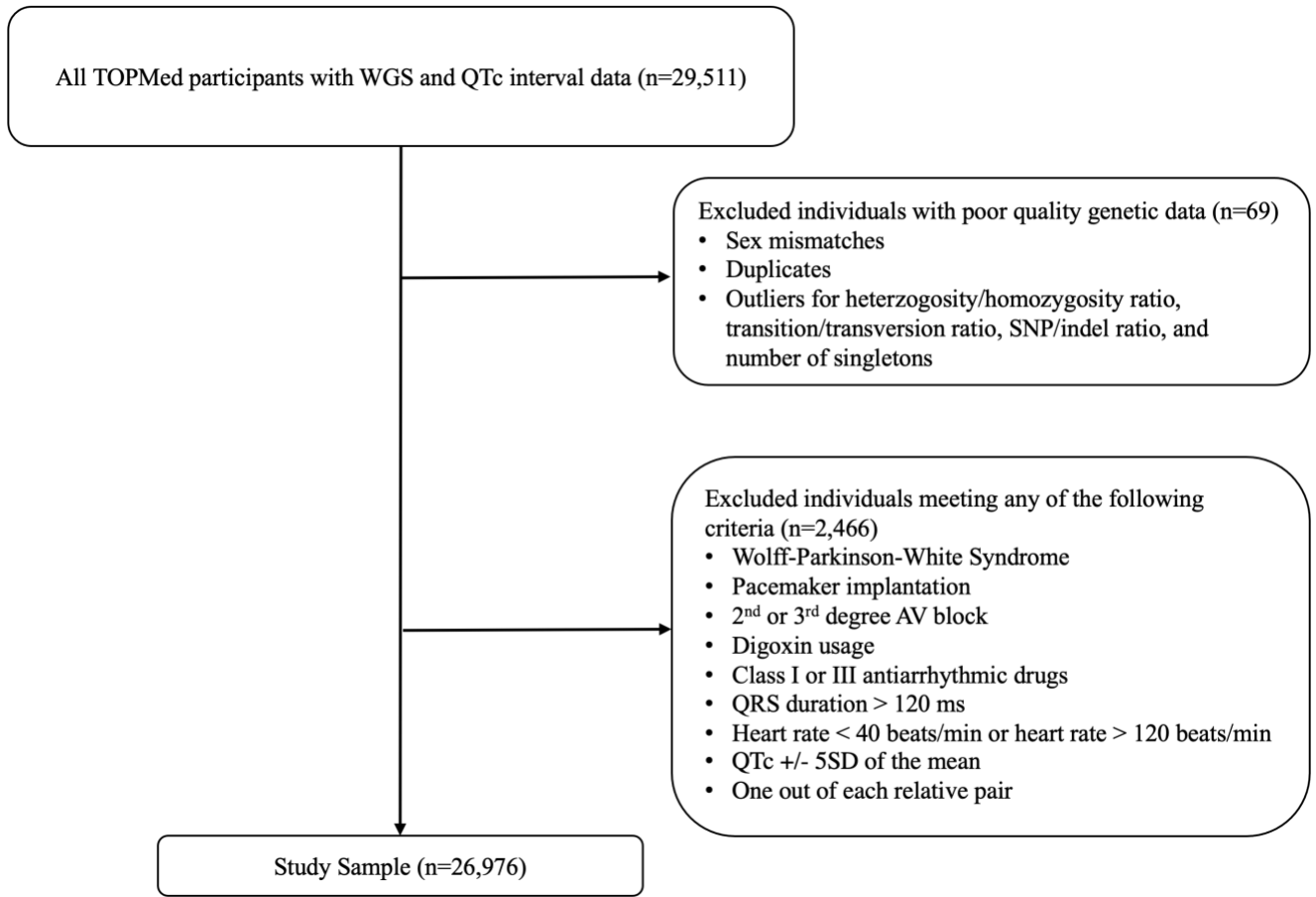
Supplemental Figure 7. Variation in the Predicted QTc Across Percentiles of the Polygenic Risk Score stratified by Putative Pathogenic Rare Variant Carrier Status in European Ancestry (A) and non-European Ancestry (B) Sub-cohorts.

Supplemental Figure 1

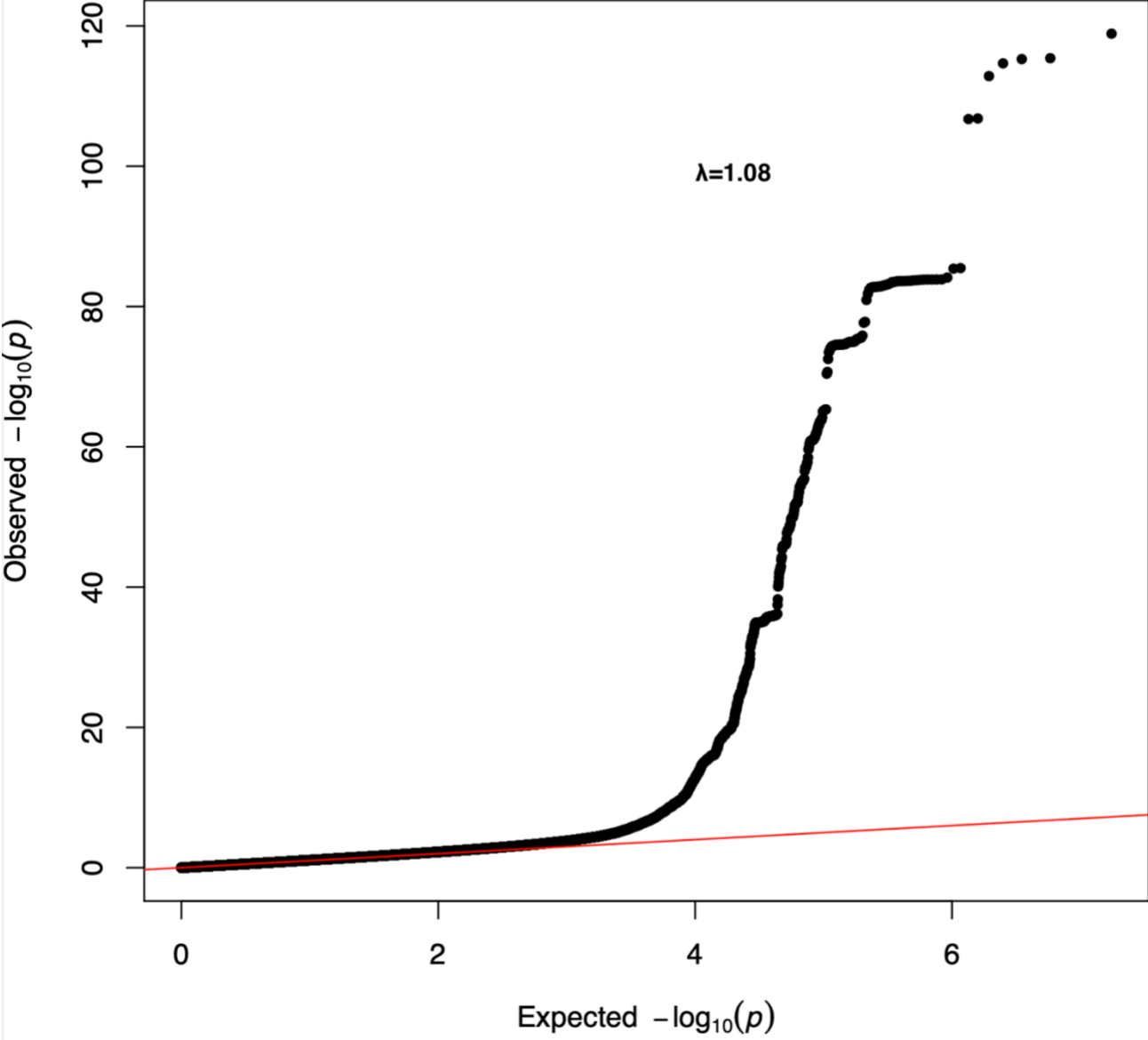
A



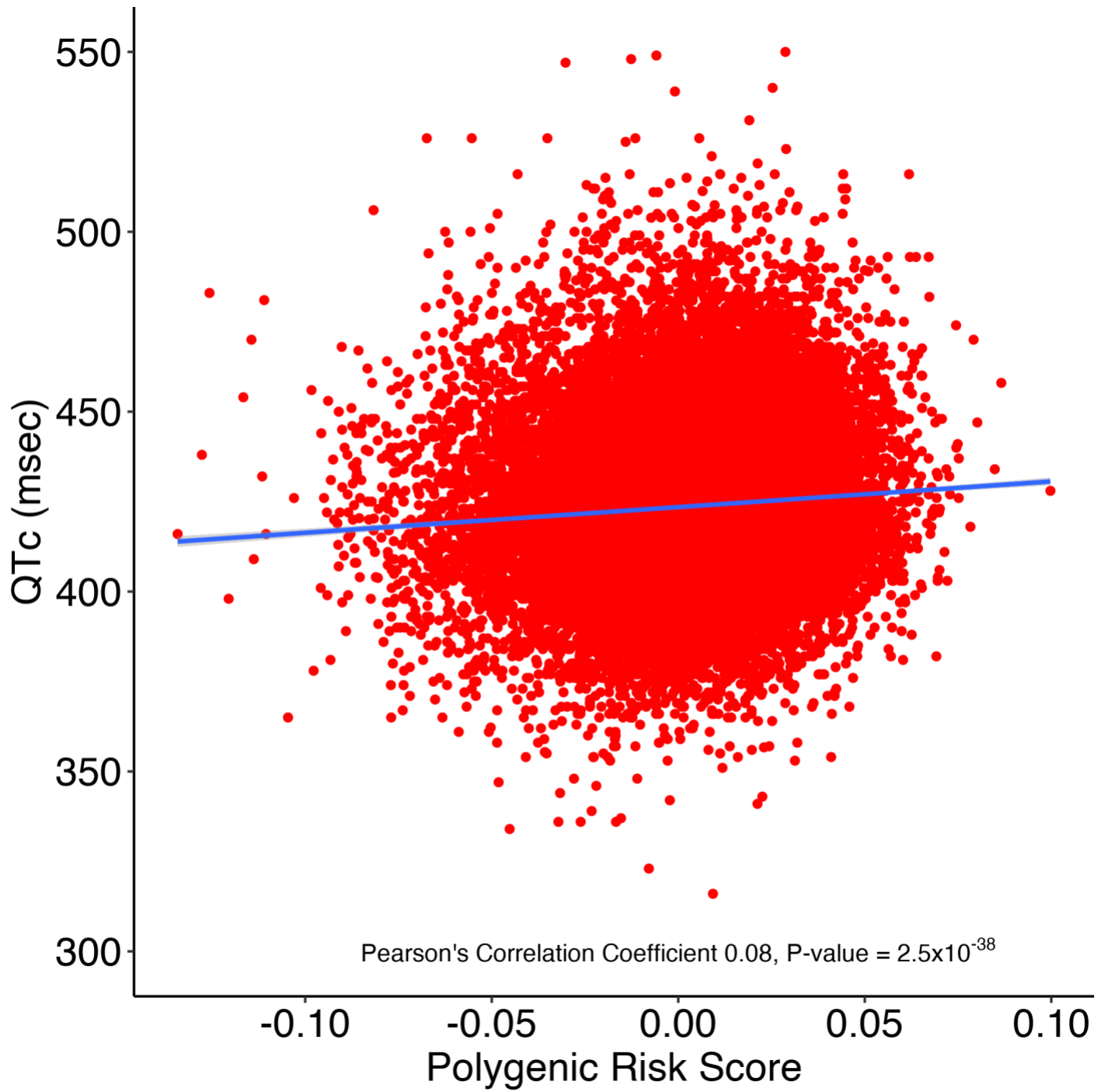
B



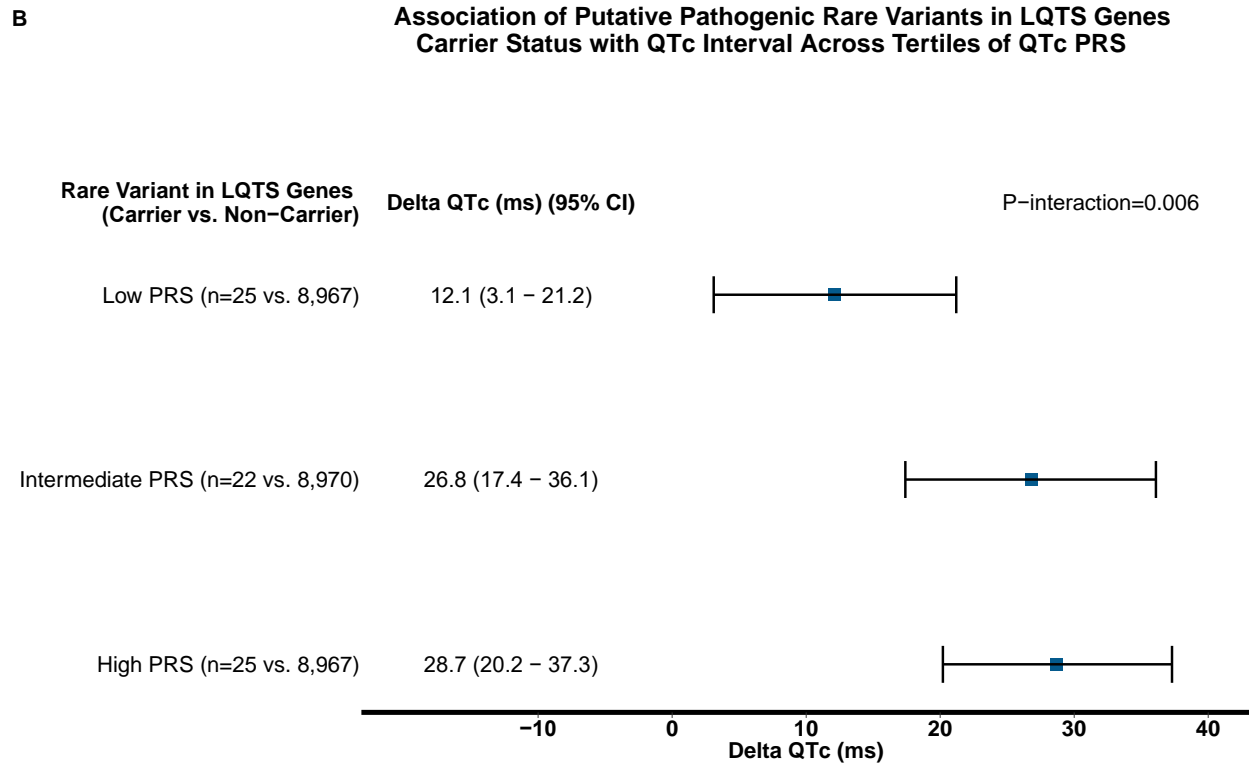
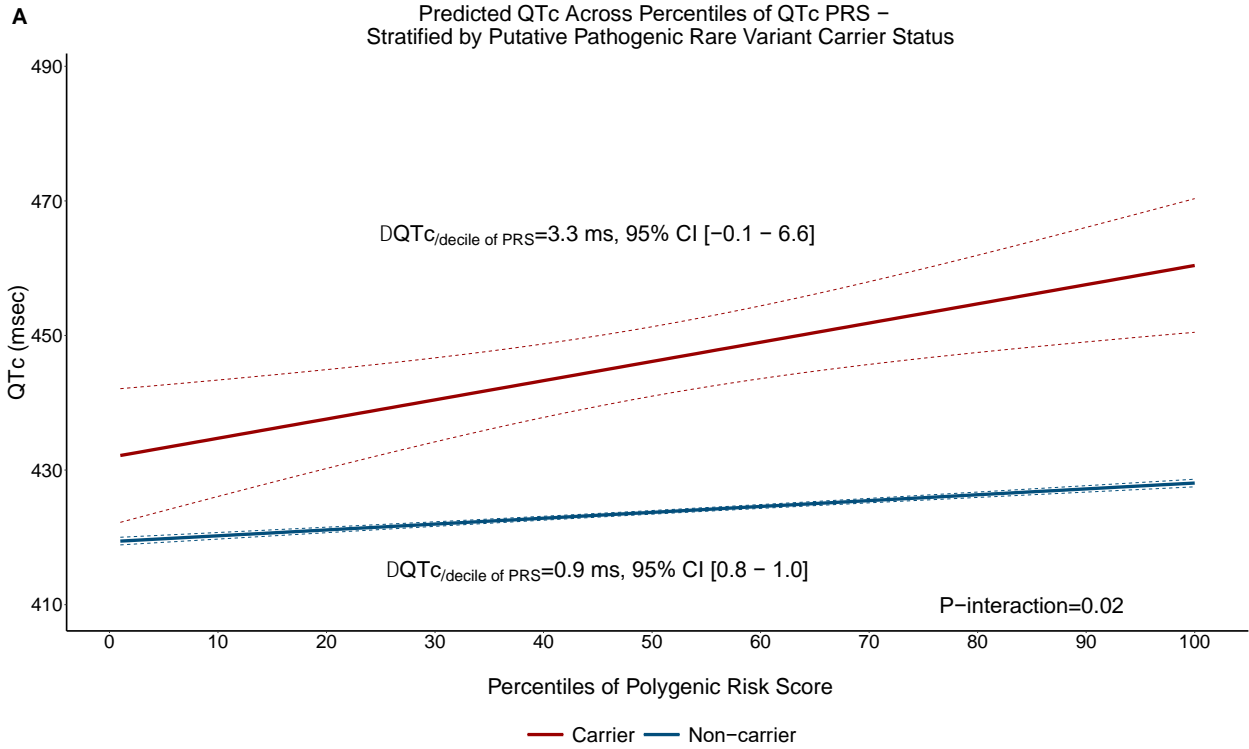
Supplemental Figure 2



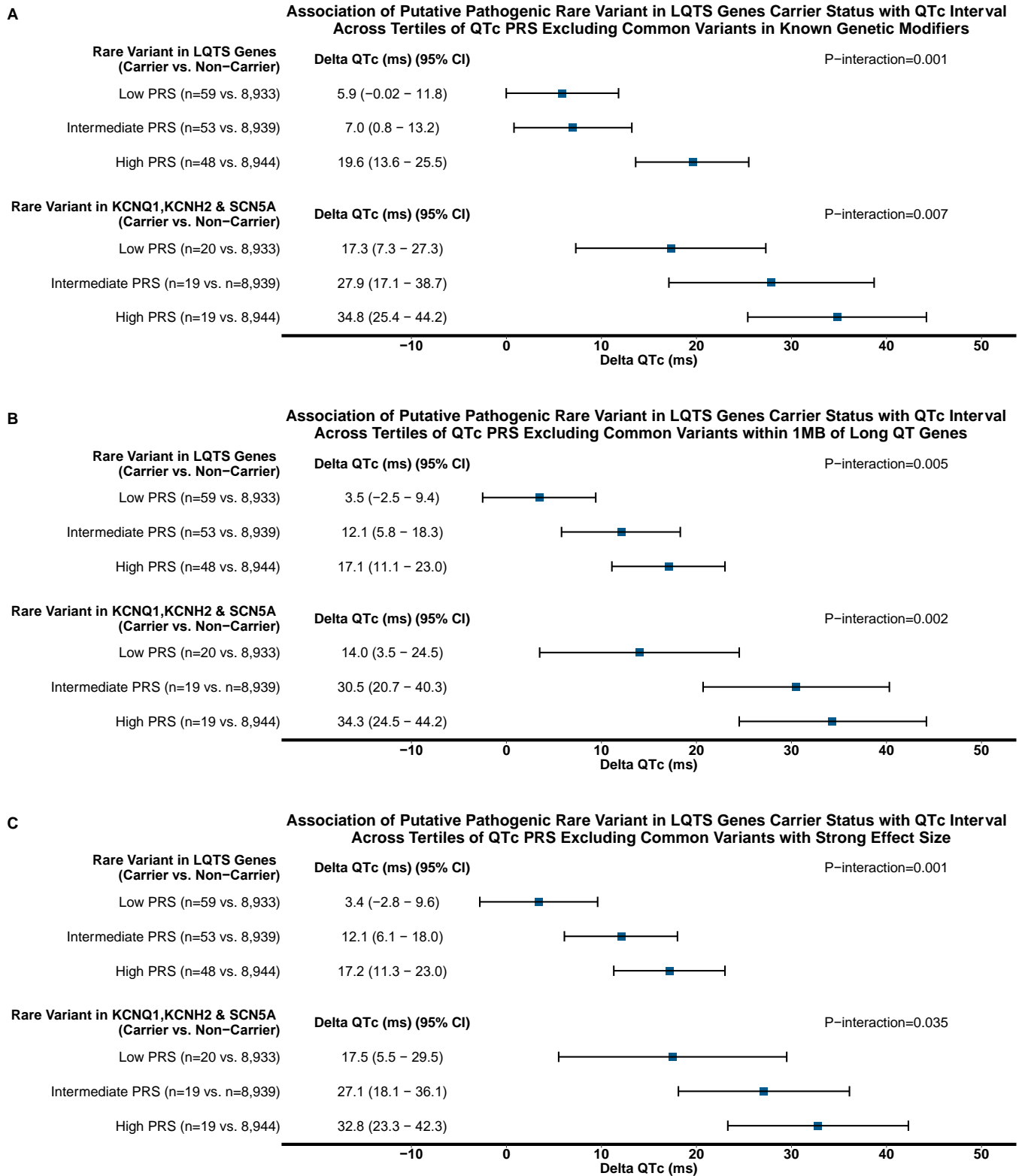
Supplemental Figure 3



Supplemental Figure 4

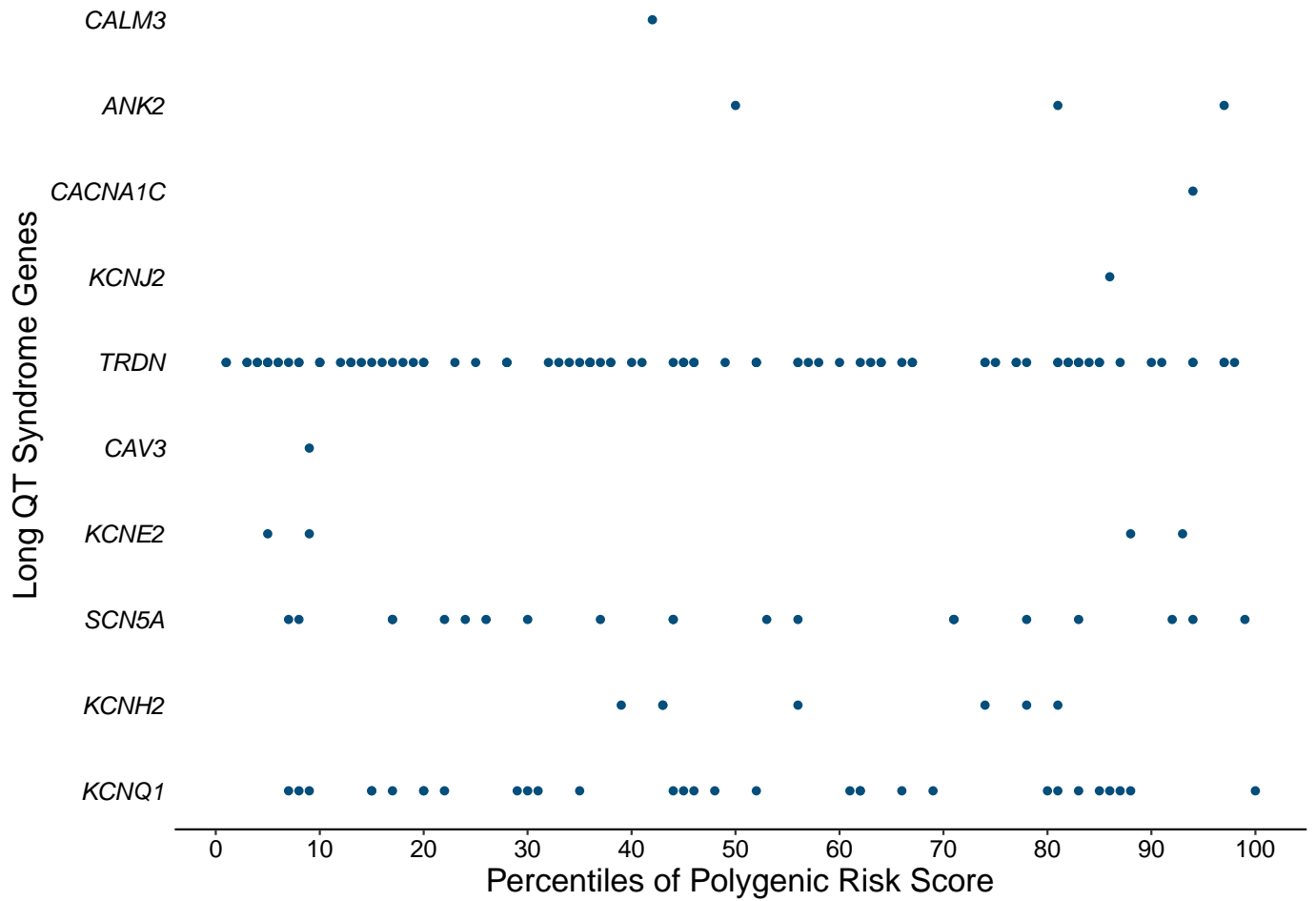


Supplemental Figure 5

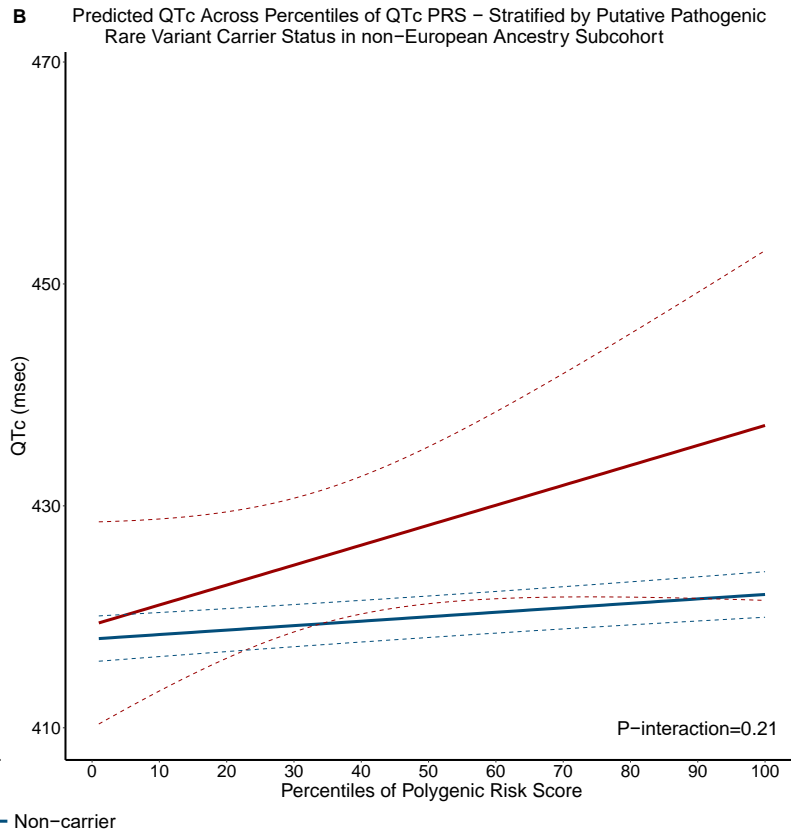
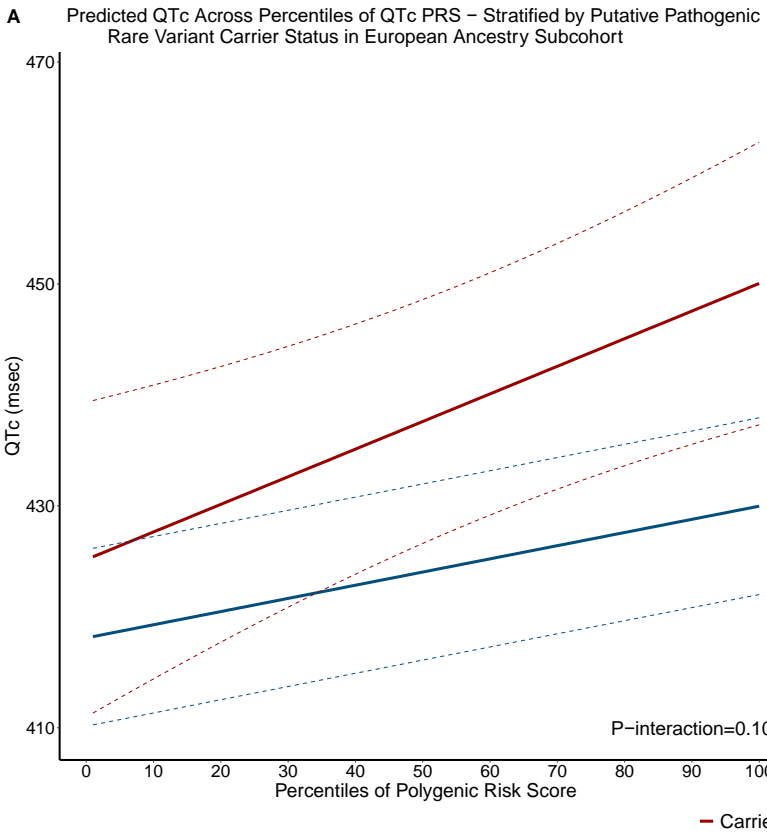


Supplemental Figure 6

Distribution of Putative Pathogenic Rare Variant Carriers in LQTS Genes Across the Spectrum of QTc Polygenic Risk Score



Supplemental Figure 7



Supplemental Table 1. Summary Statistics of Genome-Wide Significant Loci in the QTc Interval GWAS

Chr	Position (hg19)	RSID	Nearest Gene	Ref	Alt	MAF	BETA	p-value	Previously Reported	
1	6272137	rs709208	<i>RNF207</i>	A	G	0.32	0.07	1.11 E-16	Yes- PMID 24952745	
1	41305072	rs55815755	<i>KCNQ4</i>	C	A	0.02	-0.14	5.46 E-09	Yes- PMID 32527199	
1	162033890	rs12143842	<i>NOS1AP</i>	C	T	0.25	0.18	9.49 E-98	Yes- PMID 24952745	
1	169122617	rs17345156	<i>NME7</i>	C	T	0.11	-0.10	4.00 E-19	Yes- PMID 29213071	
2	29232894	rs20049388	<i>TOGARAM2</i>	GGTG	TGTGT	G	0.63	-0.04	3.02 E-08	novel
2	40719482	rs20049388	<i>SLC8A1</i>	C	T	0.07	-0.10	2.10 E-11	Yes- PMID 24952745	
2	179757948	rs5836663	<i>TTN</i>	C	CT	0.64	-0.07	2.81 E-18	Yes- PMID 24952745	
3	38687369	rs7373492	<i>SCN5A</i>	T	C	0.98	-0.21	2.88 E-15	Yes- PMID 24952745	
4	72115860	rs5859257	<i>SLC4A4</i>	T	TA	0.86	-0.08	2.41 E-12	Yes- PMID 24952745	
5	137287666	rs11637214	<i>FAM13B</i>	G	A	0.12	-0.07	1.56 E-10	novel	
6	118789259	rs78757409	<i>CEP85L</i>	C	T	0.46	0.06	1.65 E-14	Yes- PMID 19305408, 23166209	
7	150655624	rs758891	<i>KCNH2</i>	T	C	0.34	0.07	1.75 E-17	Yes- PMID 24952745	
11	2484803	rs2074238	<i>KCNQ1</i>	T	C	0.91	0.20	4.29 E-56	Yes- PMID 24952745	
15	93570723	rs13759	<i>CHD2</i>	T	C	0.39	-0.04	1.07 E-08	novel	
16	14392641	rs246181	<i>MKL2</i>	C	T	0.37	0.05	1.30 E-10	Yes- PMID 24952745	
16	58578091	rs37039	<i>CNOT1</i>	C	T	0.25	-0.09	1.29 E-28	Yes- PMID 24952745	
17	64306133	rs9909004	<i>PRKCA</i>	C	T	0.58	0.05	4.27 E-10	Yes- PMID 24952745	
17	68451507	rs11658767	<i>KCNJ2</i>	T	C	0.21	-0.05	4.46 E-09	Yes- PMID 24952745	
19	7581244	rs11339417	<i>ZNF358</i>	C	A	0.61	0.04	7.40 E-09	novel	
21	35821680	rs1805128	<i>KCNE1</i>	C	T	0.01	0.29	2.65 E-20	Yes- PMID 24952745	

Supplemental Table 2. Genome Wide Significant Novel Loci

	rsID			
	2:29232894_ GGTGTGTGT_ G	rs116372144	rs13759	rs113394178
Genomic Coordinates (hg19)	Chr2:29232894	Chr5:137287666	Chr15:93570723	Chr19:7581244
Location	Intronic	Intronic	3' UTR	Intronic
Closest Gene	<i>TOGARAM2</i>	<i>FAM13B</i>	<i>CHD2</i>	<i>ZNF358</i>
EQTL Gene in Left Ventricle	<i>PPP1CB</i>	<i>FAM13B, RP11-325L7.1, REEP2</i>	--	<i>ZNF358</i>
Other Relevant Nearby Genes (+/- 500kb from GWAS locus)	--	<i>MYOT, KLHL3</i>	--	<i>CAMSAP3, PNPLA6, PCP2</i>
Cardiovascular Effect of Gene Knockout	--	<i>FAM13B</i> knock-out in iPSC derived cardiomyocytes results in decreased expression of <i>SCN2B</i> and increased late sodium channel current density (bioRxiv doi: https://doi.org/10.1101/719914). <i>KLHL3</i> knockout mice develop pseudohypoaldosteronism type 2 like physiology with associated hypertension, hyperkalemia and metabolic acidosis (PubMed ID:28052936).	--	--

UTR: Untranslated region

Supplemental Table 3. TOPMed Replication Results of Genome-Wide Significant Loci Identified in UKBB QTc Interval GWAS

Chr	UKBB Variant RSID	Position (hg38)	TOPMed Variant RSID	Nearest Gene	Ref	Alt	MAF	BETA	P
2	2:29232894_ GGTGTGT GT_G	29010028	2:29232894_ GGTGT_G*	TOGARAM2	G	GGTG T	0.0004	-2.85	0.54
5	rs116372144	137735355	rs17171584 [†]	<i>KLHL3/FAM13B</i>	C	T	0.08	-0.67	0.054
15	rs13759	93027493	rs13759	<i>CHD2</i>	T	C	0.34	-0.21	0.30
19	rs113394178	7516358	rs113394178	<i>ZNF358</i>	C	A	0.45	1.00	3.69x10 ⁻⁷

* This variant in TOPMed represents an indel at the same genomic location as the UKBB variant, however the base-pair length of the insertion varies. [†]rs116372144 was not found in TOPMed, hence a proxy variant rs17171584 (LD=0.87 using 1000G multiancestry data) is presented. The TOPMed study sample size was 26,976.

Supplemental Table 4. Comparative Assessment of 30 Candidate PRS

Linear Regression Model	PRS tuning parameters			Linear Regression Model Fit	
	LD measure (r^2)	P-value	Number of Variants	R^2	Improvement in R^2 over clinical model
clinical model: QTc ~ age + sex + beta blocker use + calcium channel blocker use + history of MI + history of HF + PCs 1-12	-	-	-	0.083	-
clinical model + PRS1	0.05	5×10^{-8}	35	0.106	0.023
clinical model + PRS2	0.05	5×10^{-6}	56	0.103	0.020
clinical model + PRS3	0.05	5×10^{-4}	296	0.098	0.015
clinical model + PRS4	0.05	0.05	53,057	0.089	0.006
clinical model + PRS5	0.05	0.5	246,907	0.089	0.006
clinical model + PRS6	0.05	1	338,479	0.089	0.006
clinical model + PRS7	0.2	5×10^{-8}	53	0.107	0.024
clinical model + PRS8	0.2	5×10^{-6}	88	0.103	0.019
clinical model + PRS9	0.2	5×10^{-4}	357	0.103	0.020
clinical model + PRS10	0.2	0.05	68,585	0.093	0.010
clinical model + PRS11	0.2	0.5	410,869	0.091	0.008
clinical model + PRS12	0.2	1	601,719	0.091	0.008
clinical model + PRS13	0.4	5×10^{-8}	78	0.107	0.024
clinical model + PRS14	0.4	5×10^{-6}	129	0.103	0.020
clinical model + PRS15	0.4	5×10^{-4}	442	0.107	0.024
clinical model + PRS16	0.4	0.05	82,161	0.096	0.013
clinical model + PRS17	0.4	0.5	574,172	0.093	0.010
clinical model + PRS18	0.4	1	907,150	0.093	0.010
clinical model + PRS19	0.6	5×10^{-8}	147	0.108	0.025

clinical model + PRS20	0.6	5×10^{-6}	192	0.103	0.020
clinical model + PRS21	0.6	5×10^{-4}	565	0.110	0.027
clinical model + PRS22	0.6	0.05	289,266	0.098	0.015
clinical model + PRS23	0.6	0.5	734,462	0.094	0.011
clinical model + PRS24	0.6	1	1,237,946	0.094	0.011
clinical model + PRS25	0.8	5×10^{-8}	338	0.101	0.018
clinical model + PRS26	0.8	5×10^{-6}	528	0.098	0.015
clinical model + PRS27	0.8	5×10^{-4}	1,450	0.102	0.019
clinical model + PRS28	0.8	0.05	232,648	0.095	0.012
clinical model + PRS29	0.8	0.5	1,873,276	0.092	0.009
clinical model + PRS30	0.8	1	3,334,992	0.092	0.009

HF: heart failure; MI: myocardial infarction; PRS: polygenic risk score.

Supplemental Table 5. Multivariable Association of Putative Pathogenic Rare Variants in Long QT Syndrome Genes with the QTc Interval

Rare Variants Collapsed by Gene	Δ QTc (ms)*	P-value
<i>KCNQ1</i> (N=31)	30.0 (22.2 - 37.8)	6.0x10 ⁻¹⁴
<i>KCNH2</i> (N=7)	55.5 (39.2 - 71.9)	4.0x10 ⁻¹¹
<i>SCN5A</i> (N=20) [†]	9.2 (-1.0 - 19.4)	0.08
<i>KCNJ2</i> (N=1) [‡]	78.7 (35.4 - 122.0)	4.0x10 ⁻⁴
<i>KCNE2</i> (N=4)	13.5 (-8.1 - 35.2)	0.22
<i>CACNA1C</i> (N=2)	6.3 (-37.0 - 49.6)	0.76
<i>CAV3</i> (N=1)	-1.5 (-44.8 - 41.8)	0.95
<i>TRDN</i> (N=90) [§]	0.8 (-3.8 - 5.4)	0.73
<i>CALM3</i> (N=1)	15.7 (-27.6 - 59.0)	0.48
<i>ANK2</i> (N=3)	8.8 (-16.2 - 33.8)	0.49
All genes (N=160)	10.9 (7.4 - 14.4)	1.1x10 ⁻⁹
<i>KCNQ1</i> , <i>KCNH2</i> , <i>SCN5A</i> (N=58)	26.5 (20.7 - 32.3)	4.7x10 ⁻¹⁹
All genes Excluding Heterozygous <i>TRDN</i> Rare Variant Carriers (N=72)	22.7 (17.5 - 27.9)	1.2 x 10 ⁻¹⁷

* Models were adjusted for age, sex, beta blocker use, calcium channel blocker use and principal components 1-12 of ancestry. Non-carriers of rare variants in Long QT syndrome genes within the TOPMed cohort (N=26,816) constituted the reference group. [†] Only pathogenic/likely pathogenic variants were included for *SCN5A*. [‡] Only one carrier of a rare variant in *KCNJ2* was present in the study sample, hence statistically significant associations should be cautiously interpreted. [§] Of 90 carriers of putative pathogenic rare variants in *TRDN* only 2 were compound heterozygous. No putative pathogenic rare variant carriers carried variants in more than one LQTS gene.

Supplemental Acknowledgements

NHLBI TOPMed: Genetics of Cardiometabolic Health in the Amish (Amish)

The TOPMed component of the Amish Research Program was supported by NIH grants R01 HL121007, U01 HL072515, and R01 AG18728.

NHLBI TOPMed: Atherosclerosis Risk in Communities Study VTE cohort (ARIC)

The Atherosclerosis Risk in Communities study has been funded in whole or in part with Federal funds from the National Heart, Lung, and Blood Institute, National Institutes of Health, Department of Health and Human Services (contract numbers HHSN268201700001I, HHSN268201700002I, HHSN268201700003I, HHSN268201700004I and HHSN268201700005I). The authors thank the staff and participants of the ARIC study for their important contributions.

NHLBI TOPMed: Mount Sinai BioMe Biobank (BioMe)

The Mount Sinai BioMe Biobank has been supported by The Andrea and Charles Bronfman Philanthropies and in part by Federal funds from the NHLBI and NHGRI (U01HG00638001; U01HG007417; X01HL134588). We thank all participants in the Mount Sinai Biobank. We also thank all our recruiters who have assisted and continue to assist in data collection and management and are grateful for the computational resources and staff expertise provided by Scientific Computing at the Icahn School of Medicine at Mount Sinai.

NHLBI TOPMed: Cleveland Family Study - WGS Collaboration (CFS)

The Cleveland Family Study has been supported in part by National Institutes of Health grants [R01-HL046380, KL2-RR024990, R35-HL135818, and R01-HL113338].

NHLBI TOPMed: Cardiovascular Health Study (CHS)

Cardiovascular Health Study: This research was supported by contracts HHSN268201200036C, HHSN268200800007C, HHSN268201800001C, N01HC55222, N01HC85079, N01HC85080, N01HC85081, N01HC85082, N01HC85083, N01HC85086, 75N92021D00006, and grants U01HL080295 and U01HL130114 from the National Heart, Lung, and Blood Institute (NHLBI), with additional contribution from the National Institute of Neurological Disorders and Stroke (NINDS). Additional support was provided by R01AG023629 from the National Institute on Aging (NIA). A full list of principal CHS investigators and institutions can be found at CHS-NHLBI.org. The content is solely the responsibility of the authors and does not necessarily represent the official views of the National Institutes of Health.

NHLBI TOPMed: Framingham Heart Study (FHS)

The Framingham Heart Study (FHS) acknowledges the support of contracts NO1-HC-25195, HHSN268201500001I and 75N92019D00031 from the National Heart, Lung and Blood Institute and grant supplement R01 HL092577-06S1 for this research. We also acknowledge the dedication of the FHS study participants without whom this research would not be possible. Dr. Vasani is supported in part by the Evans Medical Foundation and the Jay and Louis Coffman Endowment from the Department of Medicine, Boston University School of Medicine.

NHLBI TOPMed: Jackson Heart Study (JHS)

The Jackson Heart Study (JHS) is supported and conducted in collaboration with Jackson State University (HHSN268201800013I), Tougaloo College (HHSN268201800014I), the Mississippi State Department of Health (HHSN268201800015I) and the University of Mississippi Medical Center (HHSN268201800010I, HHSN268201800011I and HHSN268201800012I) contracts from the National Heart, Lung, and Blood Institute

(NHLBI) and the National Institute on Minority Health and Health Disparities (NIMHD). The authors also wish to thank the staffs and participants of the JHS.

NHLBI TOPMed: Multi-Ethnic Study of Atherosclerosis (MESA)

Whole genome sequencing (WGS) for the Trans-Omics in Precision Medicine (TOPMed) program was supported by the National Heart, Lung and Blood Institute (NHLBI). WGS for “NHLBI TOPMed: Multi-Ethnic Study of Atherosclerosis (MESA)” (phs001416.v1.p1) was performed at the Broad Institute of MIT and Harvard (3U54HG003067-13S1). Centralized read mapping and genotype calling, along with variant quality metrics and filtering were provided by the TOPMed Informatics Research Center (3R01HL-117626-02S1, contract HHSN268201800002I). Phenotype harmonization, data management, sample-identity QC, and general study coordination, were provided by the TOPMed Data Coordinating Center (3R01HL-120393; U01HL-120393; contract HHSN268180001I). The MESA project is conducted and supported by the National Heart, Lung, and Blood Institute (NHLBI) in collaboration with MESA investigators. Support for MESA is provided by contracts 75N92020D00001, HHSN268201500003I, N01-HC-95159, 75N92020D00005, N01-HC-95160, 75N92020D00002, N01-HC-95161, 75N92020D00003, N01-HC-95162, 75N92020D00006, N01-HC-95163, 75N92020D00004, N01-HC-95164, 75N92020D00007, N01-HC-95165, N01-HC-95166, N01-HC-95167, N01-HC-95168, N01-HC-95169, UL1-TR-000040, UL1-TR-001079, and UL1-TR-001420. Also supported in part by the National Center for Advancing Translational Sciences, CTSI grant UL1TR001881, and the National Institute of Diabetes and Digestive and Kidney Disease Diabetes Research Center (DRC) grant DK063491 to the Southern California Diabetes Endocrinology Research Center.

NHLBI TOPMed: Women's Health Initiative (WHI)

The WHI program is funded by the National Heart, Lung, and Blood Institute, National Institutes of Health, U.S. Department of Health and Human Services through contracts 75N92021D00001, 75N92021D00002, 75N92021D00003, 75N92021D00004, 75N92021D00005.

TOPMed Omics Support Acknowledgements

TOPMed Accession Number	TOPMed Project	Parent Study	TOPMed Phase	Omics Center	Omics Support	Omics Type
phs000956	Amish	Amish	1	Broad Genomics	3R01HL121007-01S1	WGS
phs001211	AFGen	ARIC AFGen	1	Broad Genomics	3R01HL092577-06S1	WGS
phs001211	VTE	ARIC	2	Baylor	3U54HG003273-12S2 / HHSN268201500015C	WGS
phs001644	AFGen	BioMe AFGen	2.4	MGI	3UM1HG008853-01S2	WGS
phs001644	BioMe	BioMe	3	Baylor	HHSN268201600033I	WGS
phs001644	BioMe	BioMe	3	MGI	HHSN268201600037I	WGS
phs000954	CFS	CFS	1	NWGC	3R01HL098433-05S1	WGS
phs000954	CFS	CFS	3.5	NWGC	HHSN268201600032I	WGS
phs001368	CHS	CHS	3	Baylor	HHSN268201600033I	WGS
phs001368	VTE	CHS VTE	2	Baylor	3U54HG003273-12S2 / HHSN268201500015C	WGS
phs000974	AFGen	FHS AFGen	1	Broad Genomics	3R01HL092577-06S1	WGS
phs000974	FHS	FHS	1	Broad Genomics	3U54HG003067-12S2	WGS
phs000964	JHS	JHS	1	NWGC	HHSN268201100037C	WGS
phs001416	AA_CAC	MESA AA_CAC	2	Broad Genomics	HHSN268201500014C	WGS
phs001416	MESA	MESA	2	Broad Genomics	3U54HG003067-13S1	WGS
phs001237	WHI	WHI	2	Broad Genomics	HHSN268201500014C	WGS

ARIC: Atherosclerosis Risk in Communities, Amish: Genetics of Cardiometabolic Health in the Amish, Baylor: Baylor College of Medicine Human Genome Sequencing Center, BioMe: Mount Sinai BioMe Biobank, Broad Genomics: Broad Institute Genomics Platform, CFS: Cleveland Family Study, CHS: Cardiovascular Health Study, FHS: Framingham Heart Study, JHS: Jackson Heart Study, MESA: Multi-Ethnic Study of Atherosclerosis, MGI: McDonnell Genome Institute, NWGC: Northwest Genomics Center, TOPMed: Transomics for Precision Medicine, WGS: Whole Genome Sequencing, WHI: Women's Health Initiative

References

1. ToPMed. Available from: <https://www.nhlbiwgs.org/topmed-whole-genome-sequencing-methods-freeze-6>
2. Karczewski KJ, Francioli LC, Tiao G, et al.: The mutational constraint spectrum quantified from variation in 141,456 humans. *Nature* 2020; 581:434–443.
3. Liu X, Wu C, Li C, Boerwinkle E: dbNSFP v3.0: A One-Stop Database of Functional Predictions and Annotations for Human Nonsynonymous and Splice-Site SNVs. *Hum Mutat* 2016; 37:235–241.
4. Invitae Long QT Syndrome Panel [Internet]. Available from: <https://www.invitae.com/en/physician/tests/02211/>
5. Landrum MJ, Lee JM, Benson M, et al.: ClinVar: public archive of interpretations of clinically relevant variants. *Nucleic Acids Res* 2016; 44:D862-868.
6. Richards S, Aziz N, Bale S, et al.: Standards and guidelines for the interpretation of sequence variants: a joint consensus recommendation of the American College of Medical Genetics and Genomics and the Association for Molecular Pathology. *Genet Med* 2015; 17:405–424.