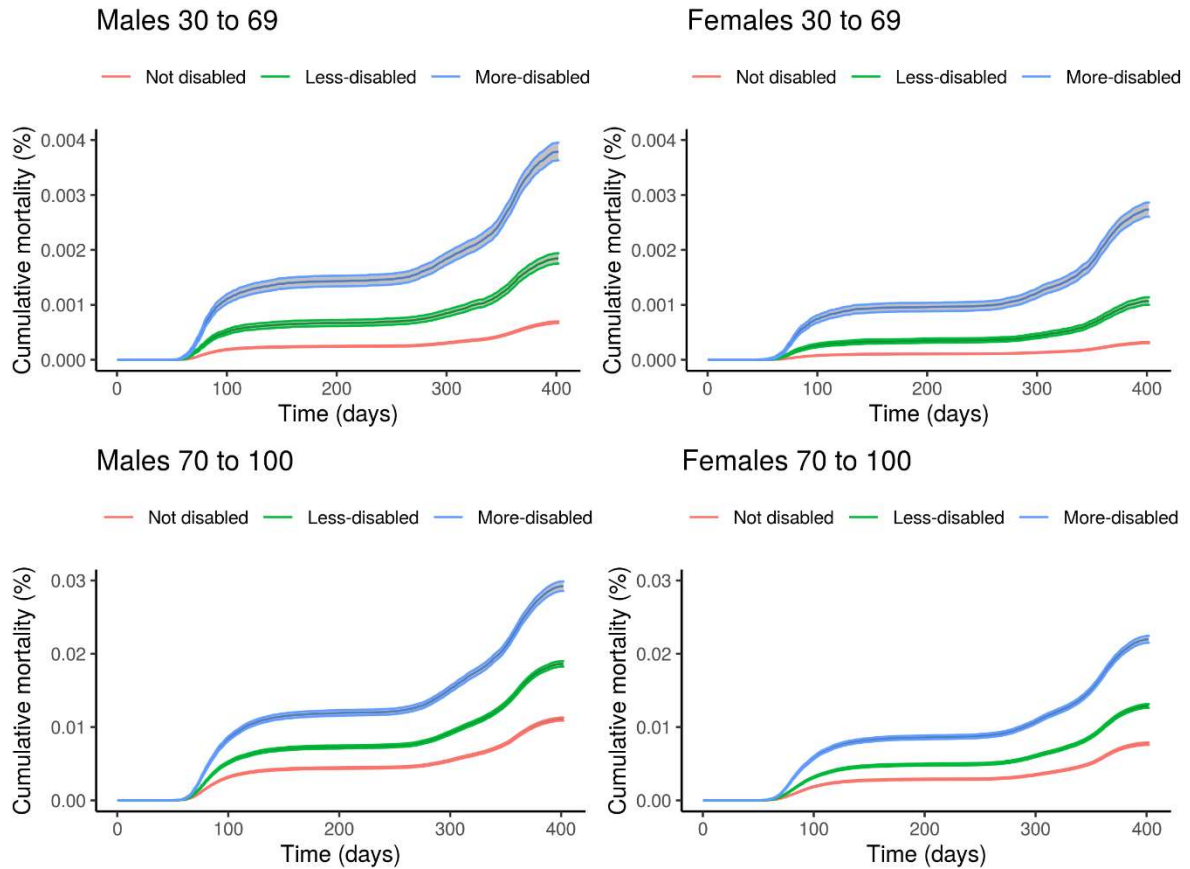


**Table S1.** Standardised differences comparing people with and without disability for all the covariates included in the modelling

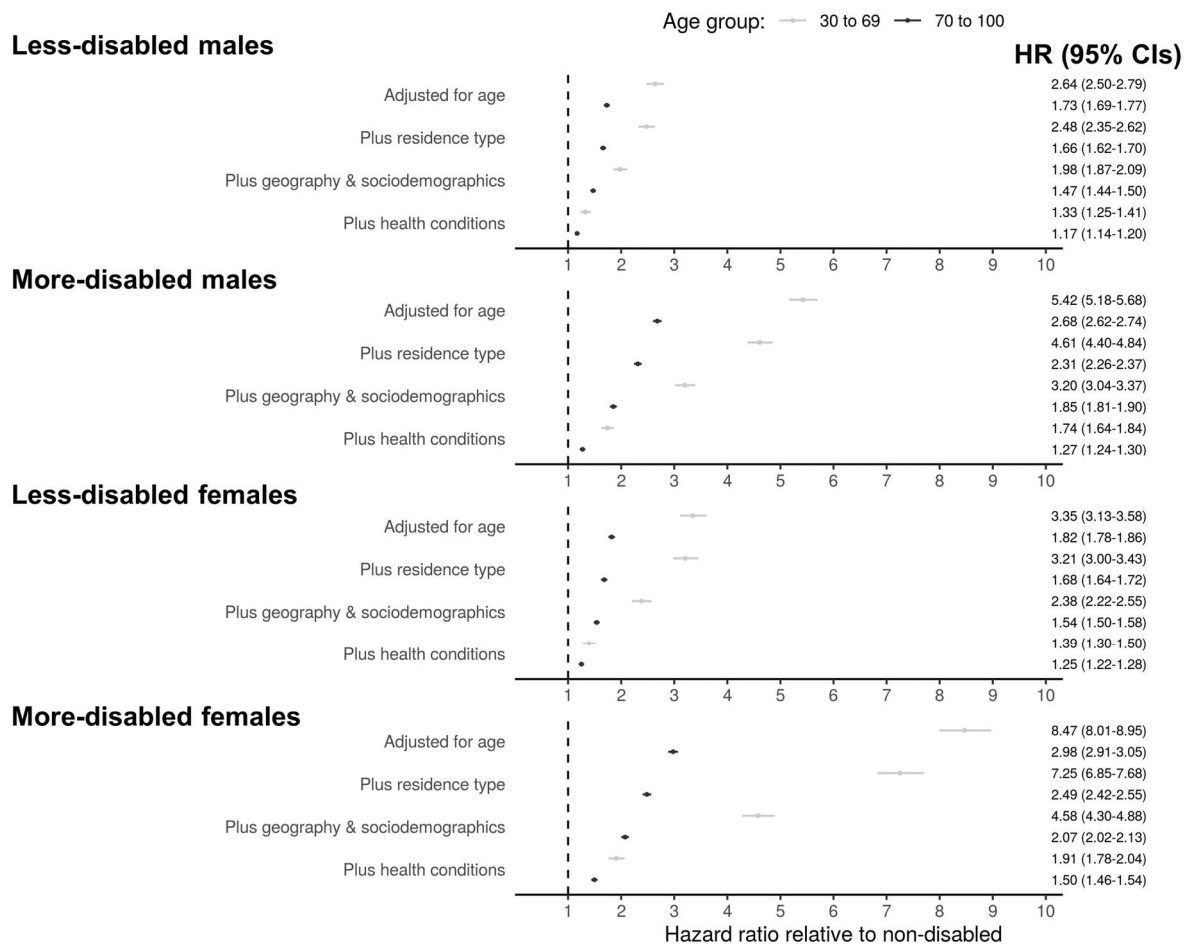
Variable	Level	<i>d</i>
Age (years)	Mean	0.82
Place of residence	Private household	0.16
	Care home	0.16
	Other communal establishments	0.03
Ethnicity	Bangladeshi	0.01
	Black African	0.06
	Black Caribbean	0.01
	Chinese	0.05
	Indian	0.02
	Mixed	0.02
	Other	0.02
	Pakistani	0.01
	White British	0.08
	White other	0.08
Level of highest qualification	No qualification	0.48
	1-4 GCSE/O-levels	0.05
	5+ GCSE/O-levels	0.10
	Apprenticeship	0.02
	2+ A-levels or equivalent	0.16
	Degree or above	0.33
	Other	0.02
Keyworker type	Not keyworker	0.10
	Education & childcare	0.09
	Food & necessary goods	0.02
	Health & social care	0.03
	Key public services	0.04
	National & local government	<0.01
	Public safety & national security	0.03
	Transport	0.02
	Utilities & communication	0.07
	Individual exposure to disease score (0-100)	Mean
Individual proximity to others score (0-100)	Mean	0.19
Number of admissions to Admitted Patient Care in past 3 years	0	0.39
	1	0.06
	2-3	0.21
	4-5	0.18
	6-9	0.16
	10+	0.11
Number of days spent in Admitted Patient Care in past 3 years	0	0.26
	1	0.14
	2-4	0.14
	5-9	0.10
	10-19	0.08
	20-39	0.05
	40-69	0.03
	70+	0.02

<b>Variable</b>	<b>Level</b>	<b>d</b>
Body mass index (kg/m <sup>2</sup> )	< 18.5	0.05
	18.5 to 25	0.09
	25 to 30	0.01
	>= 30	0.18
	Unknown	0.09
Chronic kidney disease (CKD)	No CKD	0.15
	Stage 3 CKD	0.13
	Stage 4 CKD	0.06
	Stage 5 CKD	0.04
Cancer & immunosuppression	Blood cancer	0.07
	Respiratory cancer	0.03
	Solid organ transplant	0.02
	Prescribed immunosuppressants	0.01
	Prescribed antileukotriene or long-acting beta2-agonists	0.29
	Prescribed regular prednisolone	0.15
Other health conditions	Asthma	0.14
	Atrial fibrillation	0.22
	Chronic obstructive pulmonary disease	0.26
	Cirrhosis of the liver	0.06
	Congestive cardiac failure	0.19
	Coronary heart disease	0.29
	Dementia	0.17
	Diabetes	0.32
	Epilepsy	0.13
	Osteoporotic fracture	0.04
	Parkinson's disease	0.08
	Peripheral vascular disease	0.14
	Pulmonary hypertension or pulmonary fibrosis	0.09
	Rare pulmonary diseases	0.12
	Rare neurological conditions	0.03
	Rheumatoid arthritis or systemic lupus erythematosus	0.14
	Mental illness	0.25
	Stroke or transient ischaemic attack	0.21
Venous thromboembolism	0.02	
Region	East of England	0.04
	East Midlands	0.01
	London	0.04
	North East	0.05
	North West	0.06
	South East	0.08
	South West	0.01
	West Midlands	0.03
	Yorkshire and the Humber	0.02
Population density (people per square kilometre)	Mean	0.05
Index of Multiple Deprivation	Decile 1 (most deprived)	0.14
	Decile 2	0.09
	Decile 3	0.05
	Decile 4	0.02
	Decile 5	0.01
	Decile 6	0.04

<b>Variable</b>	<b>Level</b>	<b>d</b>
	Decile 7	0.06
	Decile 8	0.08
	Decile 9	0.10
	Decile 10 (least deprived)	0.14
National Statistics Socio-Economic Classification (NS-SEC) of household reference person	Higher managerial and professional occupations	0.41
	Intermediate occupations	0.15
	Routine and manual occupations	<0.01
	Never worked or long-term unemployed	0.13
	Not applicable	0.41
Tenure of household	Owned outright	0.19
	Owned with a mortgage	0.42
	Shared ownership	0.02
	Social rented from council	0.21
	Other social rented	0.18
	Private rented	0.14
	Living rent free	0.03
Household size	1-2 people	0.27
	3-4 people	0.31
	5-6 people	0.09
	7+ people	0.02
Family status	Not in a family	0.20
	In a couple family	0.24
	In a lone parent family	0.02
Household composition	Single-adult household	0.30
	Two-adult household	0.01
	Multi-generational household	0.02
	Other 3+ adults	0.17
	Child in household	0.34
Keyworker in household	Yes	0.16
	No	0.11
Household exposure to disease score	0.0 - 20.0	0.04
	20.1 – 40.0	0.03
	40.1 – 60.0	0.02
	60.1 – 80.0	0.06
	80.1 – 100	0.06
Household proximity to others score	0.0 - 20.0	0.14
	20.1 – 40.0	0.02
	40.1 – 60.0	0.03
	60.1 – 80.0	0.01
	80.1 – 100	0.10



**Figure S1.** Age-adjusted cumulative COVID-19 related mortality during the outcome period (24 January 2020 to 28 February 2021) with bootstrapped 95% confidence intervals by disability status, stratified by age group (30 to 69 years and 70 to 100 years) and sex.



**Figure S2.** Hazard ratios for COVID-19 related mortality for less-disabled and more-disabled people compared with non-disabled people in people aged 30 to 69 years or 70 to 100 years in 2020, stratified by sex. Results obtained from Cox proportional hazards regression models adjusted for; i) age, ii) plus residence type, iii) plus local authority district, population density, area deprivation, socioeconomic status (excluding NS-SEC as this only applies to people under 75 years), ethnicity, household composition, and occupational exposure, and iv) pre-existing conditions. Error bars represent 95% confidence intervals of the hazard ratios.