

Supplementary Material

Single-dose mRNA vaccine effectiveness against SARS-CoV-2, including P.1 and B.1.1.7 variants: a test-negative design in adults 70 years and older in British Columbia, Canada

Supplementary Material S1 Genetic characterization of SARS-CoV-2 viruses	2
Supplementary Table S1	3
Supplementary Figure S1.....	4
Supplementary Figure S2 Summary of contributing specimens.....	5
Supplementary Table S2 Single-dose VE by approach for test-negative control selection.....	6
Supplementary Table S3 Single-dose VE by age subgroup.....	7
Supplementary Table S4 Single-dose VE by sex.....	8
Supplementary Table S5 Single-dose VE by epidemiological week (bi-weekly)	9
Supplementary Table S6 Single-dose VE by mRNA vaccine type	10
Supplementary Table S7 Single-dose VE by VOC status: non-VOC, B.1.1.7 and P.1	11
Supplementary Table S8 Single-dose VE: P.1 sensitivity analysis	12

Supplementary Material S1 Genetic characterization of SARS-CoV-2 viruses

To understand the mix of SARS-CoV-2 viruses underpinning vaccine effectiveness (VE) findings and to support variant-specific VE estimates, we attempted to genetically characterize all viruses collected from the 1,226 cases ≥ 70 years old who contributed to VE analyses.

Viruses were genetically grouped based upon: (a) whole genome sequencing (WGS) and/or (b) real-time reverse transcription polymerase chain reaction (RT-PCR) screening assays targeting signature mutations of particular variants of concern (VOC)^{1,2} Where WGS and screening RT-PCR assays were discordant, WGS results were accepted. Where uncertainty remained, specimens were excluded.

Whole genome sequencing

WGS was performed at the British Columbia Centre for Disease Control Public Health Laboratory (BCCDC PHL). In brief, SARS-CoV-2 RNA was extracted using the Applied BioSystems MagMax™ Express 96 Nucleic Acid Extractor and the MagMax Viral/Pathogen Nucleic Acid Isolation Kit (Thermo Fisher). Viral RNA was reverse transcribed into cDNA using Thermo SuperScript IV. A 1200bp tiled amplicon scheme³ was used to amplify the entire SARS-CoV-2 genome⁴. DNA libraries were prepared using DNA Prep Library Preparation Kit (Illumina) and sequenced on a MiSeq or NextSeq 2000 instrument (Illumina, San Diego). SARS-CoV-2 whole genome consensus sequences were generated using a modified Nextflow pipeline for running the ARTIC network's⁵ field bioinformatics tools⁶. Lineages were assigned using Pangolin (version 2.4.2, pangoleARN 2021-05-19)⁷ and sequencing quality control metrics and mutational profiles used nCoV-tools from the Simpson Lab⁸.

Screening RT-PCR

Four VOC screening RT-PCR assays were used at the BCCDC PHL and various hospital-based laboratories across the province including (1) a laboratory-developed N501Y single nucleotide polymorphism (SNP) PCR at the Victoria General Hospital located within Vancouver Island Health Authority⁹; (2) a laboratory-developed N501Y and E484K dual SNP PCR at the BCCDC PHL; (3) a laboratory developed sequential deletion and SNP PCR including N501Y and K417T at the St. Paul's Hospital Laboratory located within Vancouver Coastal Health Authority¹⁰; and (4) the commercial Seegene Allplex™ SARS-CoV-2 Variant I Assay (Seegene, Seoul, South Korea) targeting N501Y and E484K at the Kelowna General Hospital Microbiology Laboratory in the Interior Health Authority.

Based on the above, viruses were categorized as follows:

¹ Government of Canada. SARS-CoV-2 variants: National definitions, classifications and public health actions. [Accessed 2 June 2021]. Available: <https://www.canada.ca/en/public-health/services/diseases/2019-novel-coronavirus-infection/health-professionals/testing-diagnosing-case-reporting/sars-cov-2-variants-national-definitions-classifications-public-health-actions.html>

² World Health Organization. Tracking SARS-CoV-2 variants. [Accessed 2 June 2021]. Available: <https://www.who.int/en/activities/tracking-SARS-CoV-2-variants/>

³ Freed NE, Vlková M, Faisal MB, Silander OK. Rapid and inexpensive whole-genome sequencing of SARS-CoV-2 using 1200 bp tiled amplicons and Oxford Nanopore Rapid Barcoding. *Biol Methods Protoc.* 2020 Jul 18;5(1):bpaa014.

⁴ Galloway SE, Paul P, MacCannell DR, et al. Emergence of SARS-CoV-2 B.1.1.7 Lineage - United States, December 29, 2020-January 12, 2021. *MMWR Morb Mortal Wkly Rep.* 2021 Jan 22;70(3):95-9.

⁵ <https://artic.network/ncov-2019>

⁶ <https://github.com/BCCDC-PHL/ncov2019-artic-nf>

⁷ Rambaut A, Holmes EC, O'Toole A, et al. A dynamic nomenclature proposal for SARS-CoV-2 lineages to assist genomic epidemiology. *Nature Microbiology* 2020;5:1403-07. Available: <https://www.nature.com/articles/s41564-020-0770-5>

⁸ <https://github.com/jts/ncov-tools>

⁹ Horgan CA, Sbihi H, Jassem A, et al. Optimizing SARS-CoV-2 variant of concern screening: experience from British Columbia, Canada, Early 2021. *MedRxiv* 2021.03.23.21253520; (Pre-print) doi: <https://www.medrxiv.org/content/10.1101/2021.03.23.21253520v1>

¹⁰ Matic N, Lowe CF, Ritchie G, et al. Rapid detection of SARS-CoV-2 variants of concern, including B.1.1.28/P.1, British Columbia, Canada. 2021;27(6):1673-1676. doi:10.3201/eid2706.210532. https://wwwnc.cdc.gov/eid/article/27/6/21-0532_article

Non-VOC

WGS = non-VOC or

Screening RT-PCR = Negative for N501Y (presumptive)

B.1.1.7

WGS = B.1.1.7 or

Screening RT-PCR = Positive for N501Y and positive for 69/70 deletion or positive for N501Y and negative for E484K (presumptive)

B.1.351*

WGS = B.1.351 or

Screening RT-PCR = Positive for N501Y and negative for K417T (presumptive)

P.1*

WGS = P.1 or

Screening RT-PCR = Positive for N501Y and positive for K417T (presumptive)

B.1.617.1/2

WGS = B.1.617.1/2

Screening RT-PCR = Not established

*Both B.1.351 and P.1 bear the E484K substitution and cannot be distinguished on that basis by RT-PCR screening.

The above algorithm resulted in VOC classification of **1,131/1,226 (92%)** case viruses¹ as shown in the [Table S1](#) below and showing comparable distribution by participant subgroup in [Figure S1](#) below:

Table S1: Tally of classified VOC and non-VOC case viruses, by genetic sub-grouping

	Non-VOC	B.1.1.7	P.1 and B.1.351				B.1.617.1/2 ¹	Total
			P.1	501Y + 417T +	501Y + and 484K +, 417 SNP not available	B.1.351 ¹		
WGS	65	142	280	-	-	4	16	510
Screening RT-PCR	211	367	-	34	12	-	-	626
Total	276	509	326			4	16	1,131

¹ Excluded from variant-specific VE analyses owing to small sample size

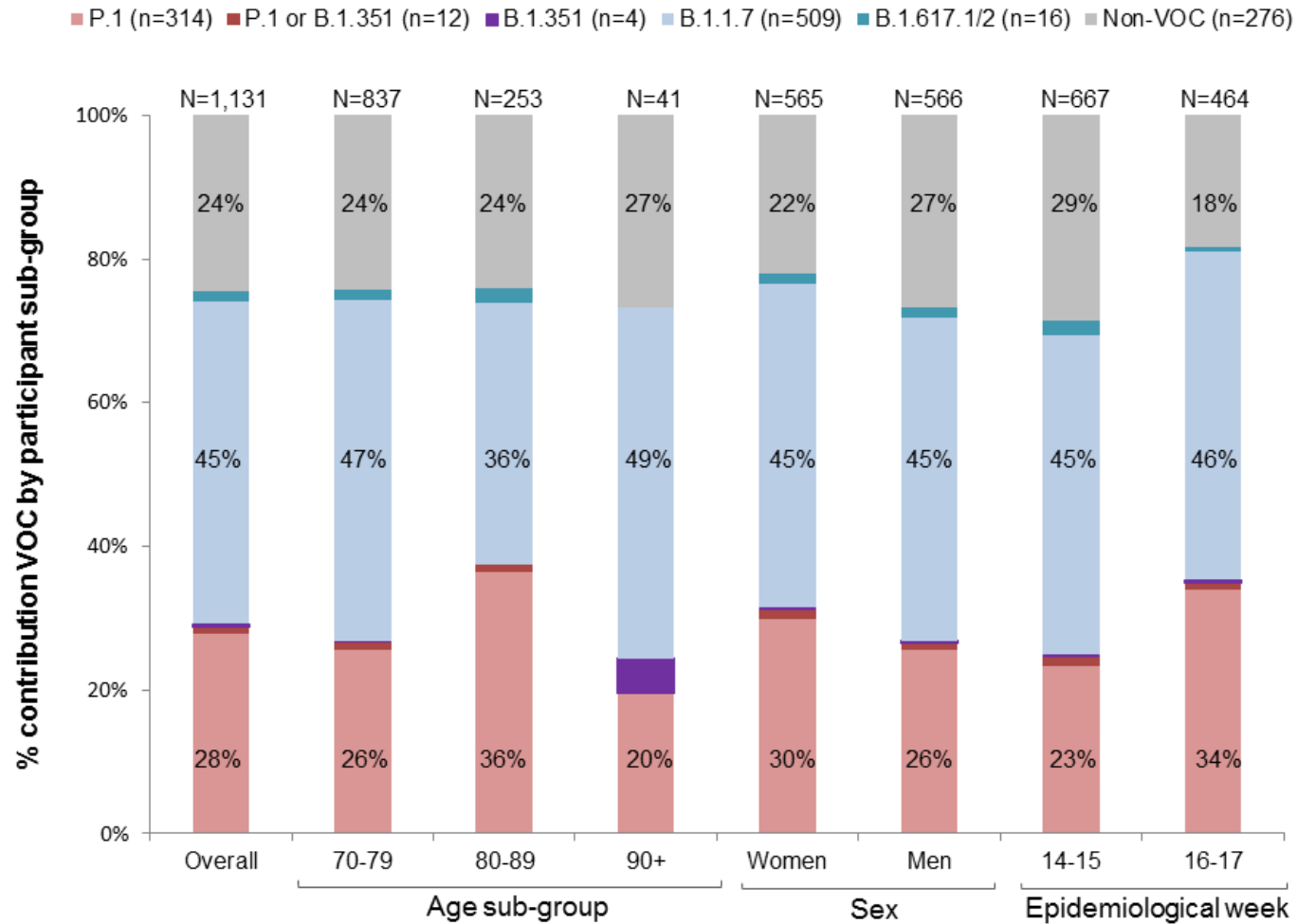
Variant-specific VE for P.1 was assessed in three ways:

- (1) Confirmed and presumptive P.1 *all* (n=326): defined by WGS (n=280) and screening assay positivity for 501Y and 417T (n=34), also including specimens that were 501Y+484K positive but for which the 417 SNP was unavailable (n=12), the latter presumptively assigned P.1 given a paucity of B.1.351 otherwise detected in BC;
- (2) Confirmed and presumptive P.1 *subset* (n=314), defined as above but excluding specimens for which the 417 SNP was not available [NOTE: this group forms the basis of our primary P.1-specific analysis];
- (3) Confirmed P.1 (n=280), defined by WGS only.

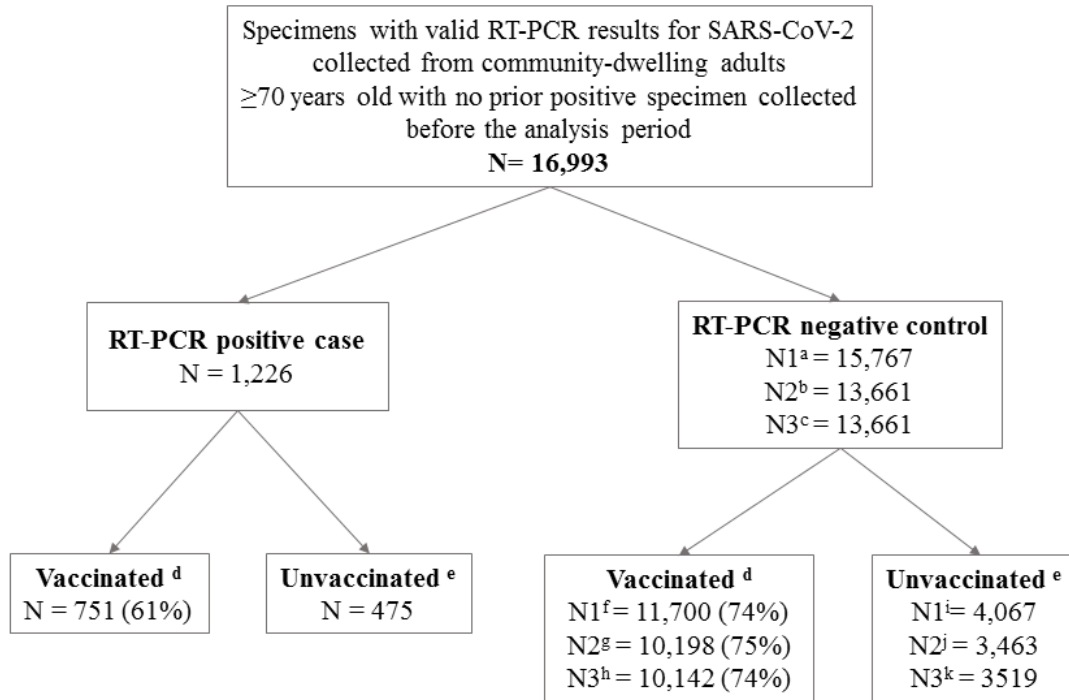
VE estimates were similar for all three definitions of P.1 (see [Supplement Table S7](#) and [Supplement Table S8](#)). We therefore present definition 2 (n=314 cases) as the primary P.1-specific VE analysis.

¹ Of the 95 case viruses excluded from VOC classification, 6 were subjected to WGS and 89 were not. Of the 6 excluded viruses that were subjected to WGS, 5 were non-VOC that were 484K positive on screening RT-PCR (including 3 designated B.1.525), and one was a presumptive B.1.1.7 on screening RT-PCR not reinforced by WGS (B.1.1). Of the 89 viruses that were not subjected to WGS, screening RT-PCR showed that 2 were 501Y negative (presumptive non-VOC) but 484K positive; 4 were 501Y positive but results for the 417 and 484 SNP were not available; and 85 lacked information on the 501 SNP required for presumptive VOC classification.

Figure S1: Distribution of variants of concern (VOC) as identified among genetically characterized viruses contributing to vaccine effectiveness (VE) analyses, adults ≥ 70 years old, British Columbia (BC), Canada, epidemiological weeks 14-17



Supplementary Figure S2. Specimens from community-dwelling adults ≥ 70 years old included in vaccine effectiveness (VE) analyses, April 4 (week 14) to May 1 (week 17), 2021, British Columbia (BC), Canada



- a. Approach 1 for control selection: all negative specimens collected from individuals before the end of the analysis period or becoming a case, whichever occurs first
- b. Approach 2 for control selection: one negative specimen (the latest) collected per individual before the end of the analysis period or becoming a case, whichever occurs first
- c. Approach 3 for control selection: one randomly selected specimen collected per individual before the end of the analysis period or becoming a case, whichever occurs first
- d. Vaccinated on or before the date of specimen collection
- e. Not vaccinated on or before the date of specimen collection
- f. Vaccinated controls selected as per approach 1
- g. Vaccinated controls selected as per approach 2
- h. Vaccinated controls selected as per approach 3
- i. Unvaccinated controls selected as per approach 1
- j. Unvaccinated controls selected as per approach 2
- k. Unvaccinated controls selected as per approach 3

Supplementary Table S2. Single-dose mRNA vaccine effectiveness by approach for test-negative control selection, adults ≥70 years, BC, Canada

Interval (DSV)	Case status	By approach for selecting among repeat test-negative control specimens											
		Approach 1 (all test-negative controls)				Approach 2 (single latest test-negative control)				Approach 3 (single random test-negative control)			
		Vacc N (%)	Unvacc N	Crude VE % (95% CI)	Adjusted ¹ VE % (95% CI)	Vacc N (%)	Unvacc N	Crude VE % (95% CI)	Adjusted ¹ VE % (95% CI)	Vacc N (%)	Unvacc N	Crude VE % (95% CI)	Adjusted ¹ VE % (95% CI)
Without excluding test-negative specimens collected within three weeks prior to a test-positive specimen													
0-13	Case	345 (42%)	475	4	14	345 (42%)	475	6	16	345 (42%)	475	7	16
	Control	3078 (43%)	4067	(-11, 17)	(0, 26)	2666 (43%)	3463	(-9, 19)	(2, 28)	2740 (44%)	3519	(-8, 20)	(3, 28)
14-20	Case	163 (26%)	475	39	43	163 (26%)	475	41	44	163 (26%)	475	40	45
	Control	2301 (36%)	4067	(27, 50)	(30, 53)	2014 (37%)	3463	(29, 51)	(32, 54)	2029 (37%)	3519	(28, 51)	(33, 54)
21-27	Case	110 (19%)	475	57	57	110 (19%)	475	58	59	110 (19%)	475	57	59
	Control	2192 (35%)	4067	(47, 65)	(47, 66)	1912 (36%)	3463	(48, 66)	(48, 67)	1909 (35%)	3519	(47, 66)	(49, 68)
28-34	Case	61 (11%)	475	71	69	61 (11%)	475	71	70	61 (11%)	475	70	70
	Control	1790 (31%)	4067	(62, 78)	(59, 77)	1557 (31%)	3463	(62, 78)	(59, 77)	1529 (30%)	3519	(61, 78)	(59, 77)
35-41	Case	30 (6%)	475	78	75	30 (6%)	475	78	75	30 (6%)	475	77	75
	Control	1180 (22%)	4067	(68, 85)	(63, 83)	1016 (23%)	3463	(69, 85)	(63, 83)	983 (22%)	3519	(67, 84)	(63, 83)
≥42	Case	42 (8%)	475	69	63	42 (8%)	475	70	64	42 (8%)	475	67	63
	Control	1150 (22%)	4067	(57, 77)	(48, 74)	1024 (23%)	3463	(59, 78)	(48, 75)	945 (21%)	3519	(54, 76)	(47, 74)
≥21	Case	243 (34%)	475	67	65	243 (34%)	475	68	66	243 (34%)	475	66	66
	Control	6321 (61%)	4067	(61, 72)	(58, 71)	5518 (61%)	3463	(62, 73)	(59, 72)	5373 (60%)	3519	(61, 71)	(59, 72)
Excluding negative specimens collected within three weeks prior to a test-positive specimen													
0-13	Case	345 (42%)	475	4	13	345 (42%)	475	6	16	345 (42%)	475	6	16
	Control	3050 (43%)	4033	(-11, 17)	(-1, 26)	2640 (43%)	3434	(-10, 18)	(2, 28)	2694 (44%)	3499	(-9, 19)	(2, 28)
14-20	Case	163 (26%)	475	40	43	163 (26%)	475	41	44	163 (26%)	475	41	45
	Control	2289 (36%)	4033	(27, 50)	(31, 53)	2002 (37%)	3434	(29, 51)	(32, 54)	2018 (37%)	3499	(28, 51)	(33, 55)
21-27	Case	110 (19%)	475	57	58	110 (19%)	475	58	59	110 (19%)	475	58	59
	Control	2186 (35%)	4033	(47, 66)	(47, 66)	1906 (36%)	3434	(48, 66)	(48, 67)	1913 (35%)	3499	(47, 66)	(49, 68)
28-34	Case	61 (11%)	475	71	69	61 (11%)	475	72	70	61 (11%)	475	70	70
	Control	1785 (31%)	4033	(62, 78)	(59, 77)	1552 (31%)	3434	(63, 78)	(60, 78)	1520 (30%)	3499	(61, 78)	(60, 78)
35-41	Case	30 (6%)	475	78	75	30 (6%)	475	79	76	30 (6%)	475	77	75
	Control	1177 (23%)	4033	(69, 85)	(63, 83)	1013 (23%)	3434	(69, 85)	(63, 84)	972 (22%)	3499	(67, 84)	(63, 83)
≥42	Case	42 (8%)	475	69	63	42 (8%)	475	70	64	42 (8%)	475	67	63
	Control	1141 (22%)	4033	(57, 77)	(48, 74)	1017 (23%)	3434	(59, 78)	(48, 75)	950 (21%)	3499	(55, 76)	(47, 74)
≥21	Case	243 (34%)	475	67	66	243 (34%)	475	68	66	243 (34%)	475	67	66
	Control	6298 (61%)	4033	(62, 72)	(59, 71)	5497 (62%)	3434	(62, 73)	(59, 72)	5362 (61%)	3499	(61, 72)	(59, 72)

DSV = Days since vaccination, the interval in days between the date of receipt of the first mRNA dose and the date of specimen collection
 Vacc = vaccinated; Unvacc = Unvaccinated; VE = vaccine effectiveness; 95% CI = 95% confidence interval

¹ VE estimates adjusted for age group (70-79, 80-89, 90+ years); sex (men, women); epidemiological week (14, 15, 16, or 17); and health authority (HA) (Fraser HA, Interior HA, Northern HA, Vancouver Coastal HA, Vancouver Island HA).

Supplementary Table S3. Single-dose mRNA vaccine effectiveness by age subgroup, adults ≥70 years, British Columbia, Canada

Interval (DSV)	Case status	By age subgroup											
		70-79 years				80-89 years				≥80 years			
		Vacc N (%)	Unvacc N	Crude VE % (95% CI)	Adjusted ¹ VE % (95% CI)	Vacc N (%)	Unvacc N	Crude VE % (95% CI)	Adjusted ¹ VE % (95% CI)	Vacc N (%)	Unvacc N	Crude VE % (95% CI)	Adjusted ² VE % (95% CI)
0-13	Case	296 (44%)	384	7	16	45 (36%)	80	11	6	49 (35%)	91	2	5
	Control	2492 (45%)	3003	(-9, 21)	(1, 28)	523 (39%)	825	(-30, 39)	(-41, 38)	586 (36%)	1064	(-40, 32)	(-41, 35)
14-20	Case	116 (23%)	384	40	46	43 (35%)	80	36	39	47 (34%)	91	29	36
	Control	1522 (34%)	3003	(26, 52)	(32, 57)	692 (46%)	825	(6, 56)	(9, 59)	779 (42%)	1064	(-2, 51)	(6, 56)
21-27	Case	64 (14%)	384	56	61	39 (33%)	80	54	54	46 (34%)	91	49	50
	Control	1127 (27%)	3003	(42, 66)	(47, 71)	880 (52%)	825	(32, 69)	(32, 70)	1065 (50%)	1064	(27, 65)	(27, 66)
28-34	Case	23 (6%)	384	75	77	31 (28%)	80	62	64	38 (29%)	91	58	59
	Control	734 (20%)	3003	(62, 84)	(64, 85)	838 (50%)	825	(42, 75)	(44, 77)	1056 (50%)	1064	(38, 71)	(39, 73)
35-41	Case	13 (3%)	384	70	73	15 (16%)	80	75	75	17 (16%)	91	77	76
	Control	335 (10%)	3003	(47, 83)	(51, 85)	626 (43%)	825	(57, 86)	(55, 86)	845 (44%)	1064	(60, 86)	(59, 86)
≥42	Case	17 (4%)	384	60	63	18 (18%)	80	65	66	25 (22%)	91	64	64
	Control	329 (10%)	3003	(33, 75)	(38, 78)	526 (39%)	825	(40, 79)	(39, 81)	821 (44%)	1064	(44, 77)	(39, 78)
≥21	Case	117 (23%)	384	64	67	103 (56%)	80	63	65	126 (58%)	91	61	62
	Control	2530 (46%)	3003	(55, 71)	(59, 74)	2873 (78%)	825	(50, 73)	(52, 75)	3791 (78%)	1064	(49, 71)	(49, 72)

DSV = Days since vaccination, the interval in days between the date of receipt of the first mRNA dose and the date of specimen collection
 Vacc = vaccinated; Unvacc = Unvaccinated; VE = vaccine effectiveness; 95% CI = 95% confidence interval

¹ VE estimates adjusted for sex (men, women); epidemiological week (14, 15, 16, or 17); and health authority (HA) (Fraser HA, Interior HA, Northern HA, Vancouver Coastal HA, Vancouver Island HA).

² VE estimates adjusted for age group (80-89, 90+ years); sex (men, women); epidemiological week (14, 15, 16, or 17); and health authority (HA) (Fraser HA, Interior HA, Northern HA, Vancouver Coastal HA, Vancouver Island HA).

Supplementary Table S4. Single-dose mRNA vaccine effectiveness by sex, adults ≥70 years, British Columbia, Canada

Interval (DSV)	Case status	By sex							
		Women				Men			
		Vaccinated N (%)	Unvaccinated N	Crude VE % (95% CI)	Adjusted ¹ VE % (95% CI)	Vaccinated N (%)	Unvaccinated N	Crude VE % (95% CI)	Adjusted ¹ VE % (95% CI)
0-13	Case	163 (40%)	247	8	16	182 (44%)	228	0	10
	Control	1475 (42%)	2054	(-13, 25)	(-4, 32)	1603 (44%)	2013	(-23, 18)	(-11, 28)
14-20	Case	83 (25%)	247	41	44	80 (26%)	228	37	40
	Control	1175 (36%)	2054	(24, 55)	(28, 57)	1126 (36%)	2013	(18, 52)	(20, 54)
21-27	Case	48 (16)	247	65	66	62 (21%)	228	48	47
	Control	1129 (35%)	2054	(51, 74)	(52, 75)	1063 (35%)	2013	(31, 61)	(28, 62)
28-34	Case	37 (13%)	247	68	67	24 (10%)	228	74	72
	Control	960 (32%)	2054	(54, 77)	(52, 78)	830 (29%)	2013	(61, 83)	(55, 82)
35-41	Case	16 (6%)	247	79	77	14 (6%)	228	78	72
	Control	627 (23%)	2054	(65, 87)	(60, 87)	553 (22%)	2013	(61, 87)	(50, 85)
≥42	Case	18 (7%)	247	76	72	24 (10%)	228	60	53
	Control	619 (23%)	2054	(61, 85)	(52, 83)	531 (21%)	2013	(39, 74)	(23, 71)
≥21	Case	119 (33%)	247	70	70	124 (35%)	228	63	60
	Control	3341 (62%)	2054	(63, 76)	(61, 76)	2980 (60%)	2013	(54, 71)	(48, 70)

DSV = Days since vaccination, the interval in days between the date of receipt of the first mRNA dose and the date of specimen collection

VE = vaccine effectiveness; 95% CI = 95% confidence interval

¹ VE estimates adjusted for: age group (70-79, 80-89, 90+ years); epidemiological week (14, 15, 16, or 17); and health authority (HA) (Fraser HA, Interior HA, Northern HA, Vancouver Coastal HA, Vancouver Island HA).

Supplementary Table S5. Single-dose mRNA vaccine effectiveness by epidemiological week, adults ≥ 70 years, British Columbia, Canada

Interval (DSV)	Case status	By epidemiological week (bi-weekly)							
		Weeks 14-15				Weeks 16-17			
		Vaccinated N (%)	Unvaccinated N	Crude VE % (95% CI)	Adjusted ¹ VE % (95% CI)	Vaccinated N (%)	Unvaccinated N	Crude VE % (95% CI)	Adjusted ² VE % (95% CI)
0-13	Case	228 (41%)	327	9	18	117 (44%)	148	-8	2
	Control	2101 (43%)	2738	(-9, 24)	(2, 32)	977 (42%)	1329	(-39, 17)	(-28, 26)
14-20	Case	85 (21%)	327	41	41	78 (35%)	148	35	45
	Control	1216 (31%)	2738	(25, 54)	(23, 55)	1085 (45%)	1329	(14, 51)	(25, 59)
21-27	Case	42 (11%)	327	63	59	68 (31%)	148	51	56
	Control	945 (26%)	2738	(48, 73)	(42, 71)	1247 (48%)	1329	(34, 64)	(41, 68)
28-34	Case	24 (7%)	327	66	60	37 (20%)	148	72	75
	Control	583 (18%)	2738	(47, 77)	(37, 75)	1207 (48%)	1329	(60, 81)	(63, 83)
35-41	Case	6 (2%)	327	84	81	24 (14%)	148	75	73
	Control	305 (10%)	2738	(63, 93)	(56, 92)	875 (40%)	1329	(62, 84)	(57, 83)
≥ 42	Case	5 (2%)	327	74	72	37 (20%)	148	66	63
	Control	163 (6%)	2738	(37, 90)	(29, 89)	987 (43%)	1329	(51, 77)	(45, 75)
≥ 21	Case	77 (19%)	327	68	64	166 (53%)	148	66	67
	Control	1997 (42%)	2738	(58, 75)	(52, 73)	4324 (76%)	1329	(57, 73)	(58, 74)

DSV = Days since vaccination, the interval in days between the date of receipt of the first mRNA dose and the date of specimen collection

VE = vaccine effectiveness; 95% CI = 95% confidence interval

¹ VE estimates adjusted for age group (70-79, 80-89, 90+ years); sex (men, women); epidemiological week (14, 15); and health authority (HA) (Fraser HA, Interior HA, Northern HA, Vancouver Coastal HA, Vancouver Island HA).

² VE estimates adjusted for age group (70-79, 80-89, 90+ years); sex (men, women); epidemiological week (16,17); and health authority (HA) (Fraser HA, Interior HA, Northern HA, Vancouver Coastal HA, Vancouver Island HA).

Supplementary Table S6. Single-dose mRNA vaccine effectiveness by mRNA product, adults ≥70 years, British Columbia, Canada

Interval (DSV)	Case status	By mRNA product (Pfizer-BioNTech; Moderna)							
		Pfizer-BioNTech				Moderna			
		Vaccinated N (%)	Unvaccinated N	Crude VE % (95% CI)	Adjusted ¹ VE % (95% CI)	Vaccinated N (%)	Unvaccinated N	Crude VE % (95% CI)	Adjusted VE % (95% CI)
0-13	Case	288 (38)	475 (62)	4	14	57 (11)	475 (89)	3	11
	Control	2575 (39)	4067 (61)	(-12, 18)	(-1, 26)	503 (11)	4067 (89)	(-30, 27)	(-20, 34)
14-20	Case	143 (23)	475 (77)	37	42	20 (4)	475 (96)	53	49
	Control	1940 (32)	4067 (68)	(23, 48)	(28, 52)	361 (8)	4067 (92)	(25, 70)	(19, 68)
21-27	Case	102 (18)	475 (82)	53	54	8 (2)	475 (98)	79	78
	Control	1864 (31)	4067 (69)	(42, 62)	(41, 63)	328 (7)	4067 (93)	(58, 90)	(55, 89)
28-34	Case	53 (10)	475 (90)	71	69	8 (2)	475 (98)	71	68
	Control	1555 (28)	4067 (72)	(61, 78)	(58, 77)	235 (5)	4067 (95)	(41, 86)	(34, 85)
35-41	Case	25 (5)	475 (95)	78	75	5 (1)	475 (99)	78	75
	Control	983 (19)	4067 (81)	(67, 86)	(61, 84)	197 (5)	4067 (95)	(47, 91)	(39, 90)
≥42	Case	35 (7)	475 (93)	70	66	7 (1)	475 (99)	60	42
	Control	1001 (20)	4067 (80)	(58, 79)	(51, 77)	149 (4)	4067 (96)	(14, 81)	(-28, 74)
≥21	Case	215 (31)	475 (69)	66	64	28 (6)	475 (94)	74	71
	Control	5408 (57)	4067 (43)	(60, 71)	(57, 71)	913 (18)	4067 (82)	(61, 82)	(56, 81)

¹ VE estimates adjusted for age group (70-79, 80-89, 90+ years); sex (men, women); epidemiological week (14, 15, 16, or 17); and health authority (HA) (Fraser HA, Interior HA, Northern HA, Vancouver Coastal HA, Vancouver Island HA).

Supplementary Table S7. Single-dose mRNA vaccine effectiveness by variant of concern (VOC) status: non-VOC, B.1.1.7 and P.1, adults ≥70 years, British Columbia, Canada

Interval (DSV)	Case Status	Non-VOC ¹ (n=276 cases)				B.1.1.7 ¹ (n=509 cases)				P.1 ^{1,2} (n=314 cases)			
		Vaccinated N (%)	Unvaccinated N	Crude VE % (95% CI)	Adjusted ³ VE % (95% CI)	Vaccinated N (%)	Unvaccinated N	Crude VE % (95% CI)	Adjusted ² VE % (95% CI)	Vaccinated N (%)	Unvaccinated N	Crude VE % (95% CI)	Adjusted ² VE % (95% CI)
0-13	Case	84 (40%)	126	12	17	140 (41%)	200	8	18	81 (43%)	109	2	11
	Control	3078 (43%)	4067	(-17, 33)	(-10, 38)	3078 (43%)	4067	(-15, 26)	(-3, 34)	3078 (43%)	4067	(-31, 27)	(-19, 34)
14-20	Case	24 (16%)	126	66	63	66 (25%)	200	42	48	53 (33%)	109	14	24
	Control	2301 (36%)	4067	(48, 78)	(42, 77)	2301 (36%)	4067	(23, 56)	(30, 61)	2301 (36%)	4067	(-20, 38)	(-7, 46)
21-27	Case	15 (11%)	126	78	74	52 (21%)	200	52	55	30 (22%)	109	49	52
	Control	2192 (35%)	4067	(62, 87)	(55, 85)	2192 (35%)	4067	(34, 65)	(37, 67)	2192 (35%)	4067	(23, 66)	(26, 69)
28-34	Case	12 (9%)	126	78	70	22 (10%)	200	75	76	18 (14%)	109	62	66
	Control	1790 (31%)	4067	(61, 88)	(43, 84)	1790 (31%)	4067	(61, 84)	(62, 85)	1790 (31%)	4067	(38, 77)	(42, 80)
35-41	Case	9 (7%)	126	75	65	11 (5%)	200	81	81	9 (8%)	109	72	68
	Control	1180 (22%)	4067	(51, 88)	(27, 83)	1180 (22%)	4067	(65, 90)	(64, 90)	1180 (22%)	4067	(44, 86)	(35, 85)
≥42	Case	6 (5%)	126	83	72	18 (8%)	200	68	67	14 (11%)	109	55	53
	Control	1150 (22%)	4067	(62, 93)	(33, 88)	1150 (22%)	4067	(48, 80)	(44, 81)	1150 (22%)	4067	(20, 74)	(12, 75)
≥21	Case	42 (25%)	126	79	72	103 (34%)	200	67	67	71 (39%)	109	58	61
	Control	6321 (61%)	4067	(70, 85)	(58, 81)	6321 (61%)	4067	(58, 74)	(57, 75)	6321 (61%)	4067	(43, 69)	(45, 72)

DSV = Days since vaccination, the interval in days between the date of receipt of the first mRNA dose and the date of specimen collection
 VOC = variant of concern; VE = vaccine effectiveness; 95% CI = 95% confidence interval

¹ Defined as in [Supplementary Material S1](#).

² Confirmed and presumptive P.1 subset (n=314) defined by whole genome sequencing (WGS) (n=280) and screening real-time reverse transcriptase polymerase chain reaction (RT-PCR) assay positivity for 501Y and 417T (n=34), excluding specimens that were 501Y positive and 484K positive but for which the 417 SNP was not available (n=12). See [Supplementary Material S1](#).

³ VE estimates adjusted for age group (70-79, 80-89, 90+ years); sex (men, women); epidemiological week (14, 15, 16, or 17); and health authority (HA) (Fraser HA, Interior HA, Northern HA, Vancouver Coastal HA, Vancouver Island HA).

Supplementary Table S8. Single-dose mRNA vaccine effectiveness: P.1 sensitivity analysis, adults ≥70 years, British Columbia, Canada

Interval (DSV)	Case Status	Confirmed and presumptive P.1 (n=326 P.1 cases) ¹				Confirmed P.1 only (n=280 P.1 cases) ²			
		Vacc N (%)	Unvacc N	Crude VE % (95% CI)	Adjusted ³ VE % (95% CI)	Vacc N (%)	Unvacc N	Crude VE % (95% CI)	Adjusted ⁴ VE % (95% CI)
0-13	Case	85 (43%)	112	0	9	72 (42%)	98	3	10
	Control	3078 (43%)	4067	(-33, 25)	(-22, 32)	3078 (43%)	4067	(-32, 29)	(-23, 34)
14-20	Case	56 (33%)	112	12	22	47 (32%)	98	15	25
	Control	2301 (36%)	4067	(-22, 36)	(-9, 44)	2301 (36%)	4067	(-20, 40)	(-7, 48)
21-27	Case	31 (22%)	112	49	51	24 (20%)	98	55	59
	Control	2192 (35%)	4067	(23, 66)	(25, 68)	2192 (35%)	4067	(29, 71)	(35, 75)
28-34	Case	19 (15%)	112	61	65	18 (16%)	98	58	64
	Control	1790 (31%)	4067	(37, 76)	(40, 79)	1790 (31%)	4067	(31, 75)	(39, 79)
35-41	Case	9 (7%)	112	72	69	8 (8%)	98	72	71
	Control	1180 (22%)	4067	(45, 86)	(35, 85)	1180 (22%)	4067	(42, 86)	(37, 87)
≥42	Case	14 (11%)	112	56	53	13 (12%)	98	53	54
	Control	1150 (22%)	4067	(23, 75)	(13, 75)	1150 (22%)	4067	(16, 74)	(13, 76)
≥21	Case	73 (40%)	112	58	60	63 (39%)	98	59	63
	Control	6321 (61%)	4067	(44, 69)	(44, 72)	6321 (61%)	4067	(43, 70)	(47, 74)

DSV = Days since vaccination, the interval in days between the date of receipt of the first mRNA dose and the date of specimen collection
Vacc = vaccinated; Unvacc = Unvaccinated; VE = vaccine effectiveness; 95% CI = 95% confidence interval

¹ Confirmed and all presumptive P.1 (n=326) defined by whole genome sequencing (WGS) (n=280) and screening real-time reverse transcription polymerase chain reaction (RT-PCR) assay positivity for 501Y and 417T (n=34), and also including specimens that were 501Y positive and 484K positive but for which the 417 SNP was not available (n=12) on the added assumption they are most likely P.1 (rather than B.1.351). See [Supplementary Material S1](#).

² Confirmed P.1 (n=280), defined by WGS only. See [Supplementary Material S1](#).

³ VE estimates adjusted for age group (70-79, 80-89, 90+ years); sex (men, women); epidemiological week (14, 15, 16, or 17); and health authority (HA) (Fraser HA, Interior HA, Northern HA, Vancouver Coastal HA, Vancouver Island HA).