

1 Insecticide resistance outpaces behavioural adaptation, as a response to Long-Lasting
2 Insecticidal Net distribution, in malaria vectors in Burkina Faso.

3

4 Antoine Sanou^{1, 2*}; Luca Nelli¹; W. Moussa Guelbéogo²; Fatoumata Cissé²; Michel M. Tapsoba²;
5 Pierre Ouédraogo²; N'falé Sagnon²; Hilary Ranson³, Jason Matthiopoulos¹; Heather M.
6 Ferguson¹.

7

8 ¹University of Glasgow, Institute of Biodiversity, Animal Health and Comparative Medicine,
9 Graham Kerr Building, G12 8QQ /United Kingdom

10 ²Centre National de Recherche et de Formation sur le Paludisme ; PO Box 2208, Av. Kunda
11 Yonré /Burkina Faso

12 ³Liverpool School of Tropical Medicine, L3 5QA, Pembroke Place/United Kingdom

13 *Corresponding author: saantoinebf@gmail.com

14 Email addresses: AS- saantoinebf@gmail.com / a.sanou.1@research.gla.ac.uk ;

15 LN- Luca.Nelli@glasgow.ac.uk ; WMG- guelbeogo.cnrfp@fasonet.bf ;

16 FC- fatimciss94@gmail.com ; TMM- tapsmichel@yahoo.fr ; PO- ouedpierre@yahoo.fr;

17 SNF- n.fale.cnlp@fasonet.bf ; HR- Hilary.Ranson@lstmed.ac.uk;

18 JM- Jason.Matthiopoulos@glasgow.ac.uk; HMF- Heather.Ferguson@glasgow.ac.uk .

19

20

21 **Abstract**

22 The decline in malaria across Africa has been largely attributed to vector control using Long-
23 Lasting Insecticidal Nets (LLINs). However, this intervention has prompted widespread
24 insecticide resistance (IR) and been associated with changes in mosquito behaviour that reduce
25 their contact with LLINs. The relative importance and rate at which IR and behavioural
26 adaptations emerge are poorly understood. We conducted surveillance of mosquito behaviour
27 and IR at 12 sites in Burkina Faso to assess the magnitude and temporal dynamics of insecticide
28 and behavioural resistance in vectors in the 2-year following mass LLIN distribution. Insecticide
29 resistance was present in all vector populations and increased rapidly over the study. In
30 contrast, no longitudinal shifts in LLIN-avoidance behaviours (earlier or outdoor biting and
31 resting) were detected. There was a moderate shift in vector species composition from
32 *Anopheles coluzzii* to *Anopheles gambiae* which coincided with a reduction in the proportion
33 of bites preventable by LLINs; possibly driven by between-species variation in behaviour. These
34 findings indicate that adaptations based on insecticide resistance arise and intensify more
35 rapidly than behavioural shifts within mosquito vectors. However, longitudinal shifts in
36 mosquito vector species composition were evident within 2 years following a mass LLIN
37 distribution. This ecological shift was characterized by a relative increase in the moderately
38 more exophagic species (*An. gambiae*) and coincided with a predicted decline in the degree of
39 protection expected from LLINs. Although human exposure fell through the study period due
40 to reducing vector densities and infection rates, such ecological shifts in vector species along
41 with insecticide resistance were likely to have eroded the efficacy of LLINs. While both
42 adaptations impact malaria control, the rapid increase of the former indicates it is the most
43 rapid strategy but interventions targeting both will be needed.

44 **Keywords:** *Anopheles gambiae* s.l., biting behaviours, Burkina Faso, insecticide resistance,
45 mosquito vectors, species composition.

46 Introduction

47 Long-lasting Insecticidal nets (LLINs) and Indoor Residual Spraying (IRS) are the main malaria
48 vector controls tools [1, 2] recommended by the World Health Organisation (WHO) [3]. Both
49 interventions have had a significant impact on malaria control in Africa; with LLINs being
50 primarily responsible for the >50% reduction in prevalence since 2000 [4]. The success of these
51 interventions rely on their ability to exploit innate aspects of malaria vector behaviour including
52 a preference for feeding on humans (anthropophagy), inside houses (endophagy), during
53 sleeping hours, and to rest inside houses (endophily) after feeding [5, 6]. Consequently, LLINs
54 and IRS are expected to work best against anthropophilic, endophilic and endophagic vectors
55 that have high susceptibility to insecticides [7, 8]. Historically, most of the major malaria
56 vectors in Africa (members of the *An. gambiae* s.l. complex) were described as having highly
57 anthropophilic [9, 10] and endophilic resting behaviour [11], characterized by late night-biting
58 [11, 12]. This combination of traits is thought to account for the early success of current vector
59 control approaches in Africa [13].

60 However global progress on malaria control has stalled since 2015 [14], with a slowing of
61 decline in cases and deaths, and even an increase in some settings. This stagnation has been
62 most pronounced within a small group of high-burden countries including ten in Africa plus
63 India. This slowdown is hypothesized to be driven by the widespread emergence of insecticide
64 resistance (IR) in malaria vectors that has now been documented in almost all African countries
65 [15]. Resistance has been facilitated by the reliance of almost all LLIN products on a single class
66 of insecticides (pyrethroids). Vectors have developed a range of resistance mechanisms against
67 pyrethroids including target site mutations [16], cuticular resistance [17] and metabolic
68 resistance [18]. Additionally, there are reports of vectors shifting key behaviours that
69 predispose them to LLINs including their host choice [19], biting time [7, 20] and location
70 (indoor versus outdoors, [21]) and resting [22]. Such shifts can arise either through ecological
71 changes in vector species composition (with more zoophilic, exophagic and exophilic species
72 being favoured; [23, 24]) or evolutionary adaptations reflected by behavioural changes within
73 species. Examples of within species behavioural changes include the apparent switch in biting
74 time from late night to morning in *An. funestus* in Benin [25] and from indoor to outdoor resting
75 in *An. arabiensis* in Tanzania [19]. Such ecological and adaptive changes have been
76 documented in several settings [26, 27]. Regardless of how changes in vector behaviour arise,

77 they are expected to erode LLIN effectiveness, with outdoor biting alone estimated as being
78 responsible for over 10 million malaria cases in Africa [28].

79 Ecological shifts and evolutionary adaptations in mosquito behaviour could both reduce
80 malaria control by enabling mosquitoes to avoid contact with LLINs. In contrast, IR allows
81 mosquitoes to tolerate contact with LLINs by avoiding immediate mortality. Understanding the
82 relative capacity of mosquito vectors to mount IR and behavioural avoidance in response to
83 LLINs is necessary to estimate the risk posed by each process to malaria control and highlight
84 where mitigation efforts should be prioritized. For instance, rapid emergence of behavioural
85 avoidance mandates incorporation of interventions that target mosquitoes outside homes
86 (e.g. spatial repellents, endectocides, larvicides etc [29]). In contrast, the rapid emergence of
87 insecticide resistance in vectors who continue to feed and rest indoors indicates that switching
88 to alternative insecticide classes in indoor-based interventions (e.g. next generation nets or
89 using non-insecticidal methods inside the home (house screening [30, 31]) may have greater
90 impact.

91 Burkina Faso is amongst the 10 high burden malaria countries in Africa where prevalence
92 appears to be rising despite several rounds of mass LLIN distribution [32]. The *Anopheles*
93 *gambiae* (*An. arabiensis*, *An. coluzzii* and *An. gambiae*) and *An. funestus* species groups are the
94 primary vectors in this country [33, 34]. Resistance to insecticides (DDT and Dieldrin) was first
95 detected in Burkina Faso in the late 1960s [35, 36]. Over the past two decades IR has intensified
96 in vector populations in Burkina Faso [15, 37] with levels being amongst the highest in Africa
97 [38]. This high rate of IR is hypothesized to be responsible for the limited impact of LLINs in
98 Burkina Faso [39], but less is known about the potential of additional impacts of mosquito
99 behavioural adaptations and changes in vector species composition. In the current study we
100 estimated the potential epidemiological impact of temporal shifts in vector abundance,
101 insecticide resistance and behaviour in two ways. First, we estimated expected human
102 exposure to infected mosquitoes in term of the “Entomological Inoculation Rate “(“EIR”)
103 between study years. The EIR is considered to be one of the most direct estimates of human
104 exposure to malaria and has a relatively good correlation with human epidemiological
105 outcomes such as malaria incidence [40, 41]. Additionally, we estimated the degree of
106 protection expected to be obtained from use of an effective LLIN during typical sleeping hours,

107 as a function of the time and location of mosquito biting [42]. In combination this information
108 will enable assessment of malaria transmission and the expected impact of current control
109 tools as vector behavioural and physiological resistance rises.

110 Much of the knowledge on malaria vector behaviours in Burkina Faso comes from before the
111 period of mass LLIN distribution [43-45] and showed that that > 50% of *An. gambiae* s.l. bite
112 indoors and biting activity was concentrated late at night (01 h – 06 h), with only few studies
113 thereafter [46, 47]. We conducted an observational study to measure the intensity and rate of
114 change in insecticide and behavioural resistance traits within malaria vector populations over
115 2 years following a mass LLIN distribution in Burkina Faso. Aims were to (1) update information
116 on vector ecology and behaviour in a high burden African country, (2) quantify and compare
117 the magnitude and rate of change in insecticide and behavioural resistance traits, and malaria
118 vector species composition and (3) estimate the potential impact of changes in these ecological
119 and physiological traits on malaria transmission and LLIN effectiveness

120 Results

121 A total of 49,482 mosquitoes (both female and male) were caught in HLC, of which most were
122 female *An. gambiae* s.l. (N = 40,220; Table 1). A total of 927 mosquitoes were collected from
123 the RBTs of which 584 were female *An. gambiae* s.l. (Table 2). Within the subset (~20 % of
124 total) of *An. gambiae* s.l. collected in HLC that were identified to species level, 53.2% were *An.*
125 *coluzzii*, 45.9% were *An. gambiae* and 0.28% were *An. arabiensis*. Within the 449 resting female
126 *An. gambiae* s.l. identified by PCR, *An. coluzzii* was dominant (61.25%) followed by *An. gambiae*
127 (38.08%), *An. arabiensis* (n=2, 0.45%) and one hybrid between *An. coluzzii* and *An. gambiae*
128 (0.22). Due to the low number of *An. arabiensis*, this species was not included in statistical
129 analysis of species-specific differences.

130 **Table 1:** Total number of female Anophelines caught using Human Landing Catches in 12 villages of southwestern Burkina Faso, from October 2016 to December
 131 2018. Results are displayed by trapping location (IN = indoor and OUT = outdoor) and village.

Village	<i>An. coustani</i>		<i>An. funestus</i>		<i>An. gambiae s.l.</i>		<i>An. nili</i>		<i>An. obscurus</i>		<i>An. pharoensis</i>		<i>An. rufipes</i>		<i>An. zeimani</i>		Total
	IN	OUT	IN	OUT	IN	OUT	IN	OUT	IN	OUT	IN	OUT	IN	OUT	IN	OUT	
Dangouindougou	0	4	3	3	788	786	0	1	0	0	11	14	1	0	0	0	1,611
Gouera	0	0	0	5	762	867	0	3	0	0	1	4	0	0	0	0	1,642
Nianiagara	0	0	1	0	451	522	4	0	0	0	2	4	0	0	0	0	984
Nofesso	0	0	1	0	340	540	0	0	0	0	0	0	0	0	0	0	881
Ouangolodougou	0	0	0	0	265	409	0	0	0	0	1	0	0	0	0	0	675
Sitiena	31	12	1	1	2,549	2,589	160	306	5	8	25	34	0	0	1	0	5,722
Tengrela	49	88	4	3	4,579	4,598	25	47	1	0	63	152	2	5	2	3	9,621
Tiefora	1	2	4	2	3,917	4,754	14	24	0	0	52	119	0	0	0	0	8,889
Timperba	0	1	0	1	445	413	0	1	0	0	0	0	0	0	0	0	861
Tondoura	0	0	1	0	1,121	1,096	2	5	0	0	1	1	0	0	0	0	2,227
Toumouseni	0	2	2	2	2,670	3,056	8	17	0	0	14	29	0	0	0	0	5,800
Yendere	2	1	0	4	1,272	1,431	5	9	0	0	9	9	0	0	0	0	2,742
Total	83	110	17	21	19,159	21 061	218	413	6	8	179	366	3	5	3	3	41,655

132

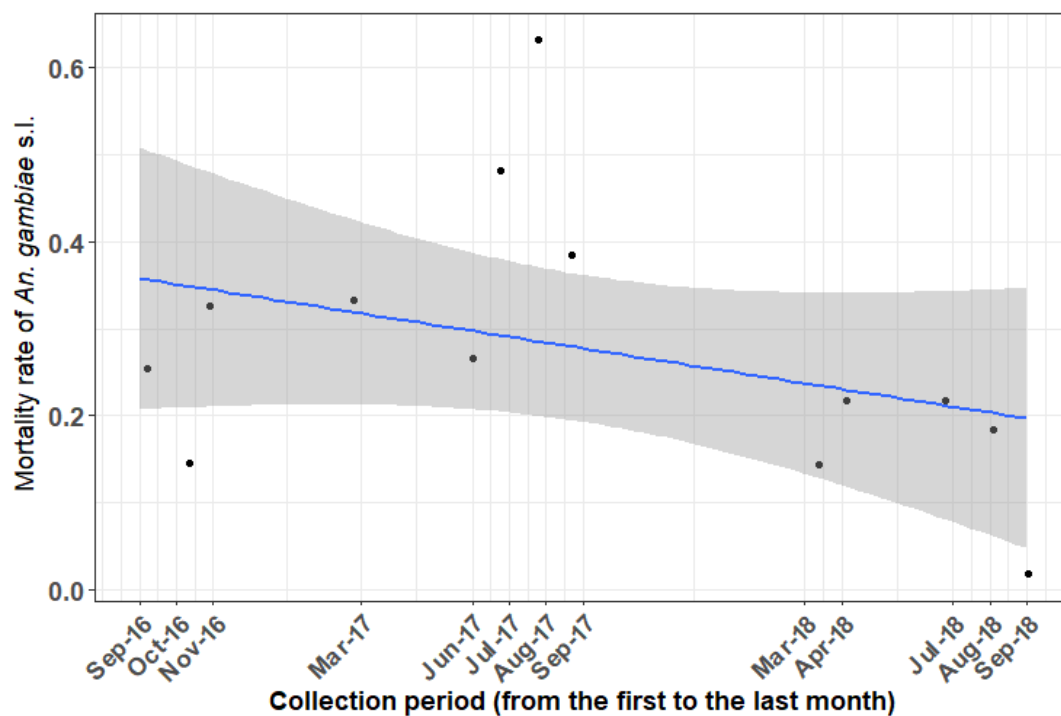
133

134 **Table 2:** Total number of female Anophelines caught using Resting Bucket Traps in 12 villages of southwestern Burkina Faso, from October 2016 to December
 135 2018. Results are displayed by trapping location (IN = indoor and OUT = outdoor) and village.

	<i>An. coustani</i>		<i>An. funestus</i>		<i>An. gambiae s.l.</i>		<i>An. nili</i>		<i>An. pharoensis</i>		<i>An. rufipes</i>		Total
	IN	OUT	IN	OUT	IN	OUT	IN	OUT	IN	OUT	IN	OUT	
Dangouindougou	0	0	0	1	2	4	0	0	0	0	0	1	8
Gouera	0	0	0	4	11	25	0	0	0	0	0	11	51
Nianiagara	0	0	0	0	8	6	0	0	0	0	0	0	14
Nofesso	0	0	0	0	1	2	0	0	0	0	0	0	3
Ouangolodougou	0	0	0	0	4	0	0	0	0	0	0	0	4
Sitiena	0	0	0	0	22	19	0	0	0	0	0	0	41
Tengrela	0	2	2	1	142	101	0	2	1	1	5	0	256
Tiefora	0	0	0	2	58	73	0	1	0	0	0	0	134
Timperba	0	0	0	0	2	1	0	0	0	0	0	0	3
Tondoura	0	0	0	0	12	11	0	0	0	0	0	0	23
Toumousseni	0	0	0	0	32	40	0	0	0	0	0	0	72
Yendere	0	0	0	0	6	2	0	0	0	0	0	0	8
Total	0	2	2	8	300	284	0	3	1	1	5	12	618

137 Insecticide Resistance

138 The overall mortality of *An. gambiae* s.l. in the 24 hours following exposure to the DD was
139 23.33% [95%CI: 14.63 – 32.05%], indicating a resistant population according to WHO criteria.
140 The mortality of *An. gambiae* s.l. following exposure to the DD of deltamethrin declined
141 significantly over the study period, falling from ~38% at the beginning (October 2016) to ~17%
142 toward the end (September 2018, Figure 1). As expected, mortality 24 hour post-exposure
143 generally rose with increased concentration of deltamethrin ((0.25%: 64.14% [95% CI: 55.27 –
144 73.0]; 0.5%: 86.03 [95% CI: 81.87 – 90.2%]; 0.75%: 87.48% [95% CI: 81.52 – 92.43%]). The
145 predicted reduction in post-exposure mortality over time as observed with the DD was also
146 detected at 15X the DD (Supplementary Table 1). Long-term increases in IR were evident after
147 controlling for statistically significant variation between villages (all concentrations) and season
148 (only detected in bioassays using the DD; Supplementary Table 1).

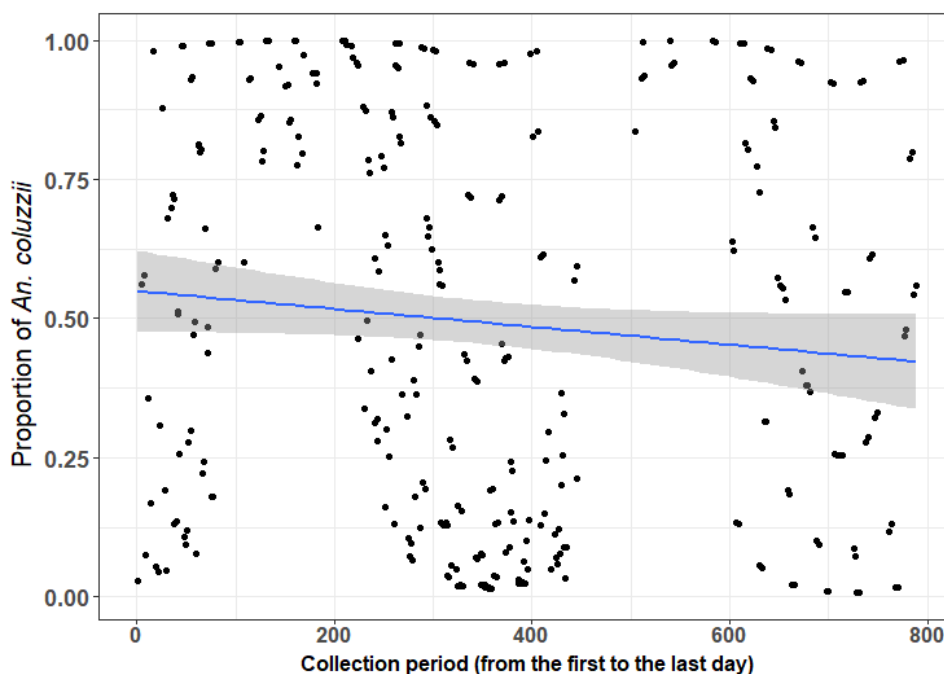


149
150 Figure 1: Mean predicted longer-term trend in the mortality of *Anopheles gambiae* s.l. 24 hours
151 following exposure to a diagnostic dose of deltamethrin across the study period. Black dots indicate
152 mean predicted mortality at each study month between September 2016 to September 2018 across 9
153 villages in southwestern Burkina Faso. The blue line indicates the predicted linear change in *An.*

154 *gambiae* s.l. across the study period based on the final model, with the grey-shaded areas around them
155 indicate 95% confidence intervals.

156 The human biting rate and *Anopheles gambiae* s.l. species composition:

157 Across the whole study period and pooling across sites, the mean HBR of *An. gambiae* s.l. was
158 ~17 bites per person, per night (bppn). After controlling for seasonal and spatial variation,
159 there was evidence of a 39 % longitudinal reduction in HBR (supplementary Table 2) from the
160 beginning to end of the study period. Similarly, after controlling for variation due to season and
161 village there was also evidence of 23% decline in the proportion of *An. coluzzii* relative to *An.*
162 *gambiae* over the study period (Supplementary Table 2, Figure 2).



163
164 **Figure 2:** Mean predicted long-term trends in *Anopheles coluzzii* proportion within the *An. gambiae* s.l.
165 complex from 12 villages in southwestern Burkina Faso. The blue curve and line represent the predicted
166 regressions from models accounting for additional variation due to village and trapping location (inside
167 and outdoors houses), with the grey-shaded area around them indicating the 95% confidence intervals.

168 *Anopheles gambiae* s.l. behaviours (biting and resting) and host choice

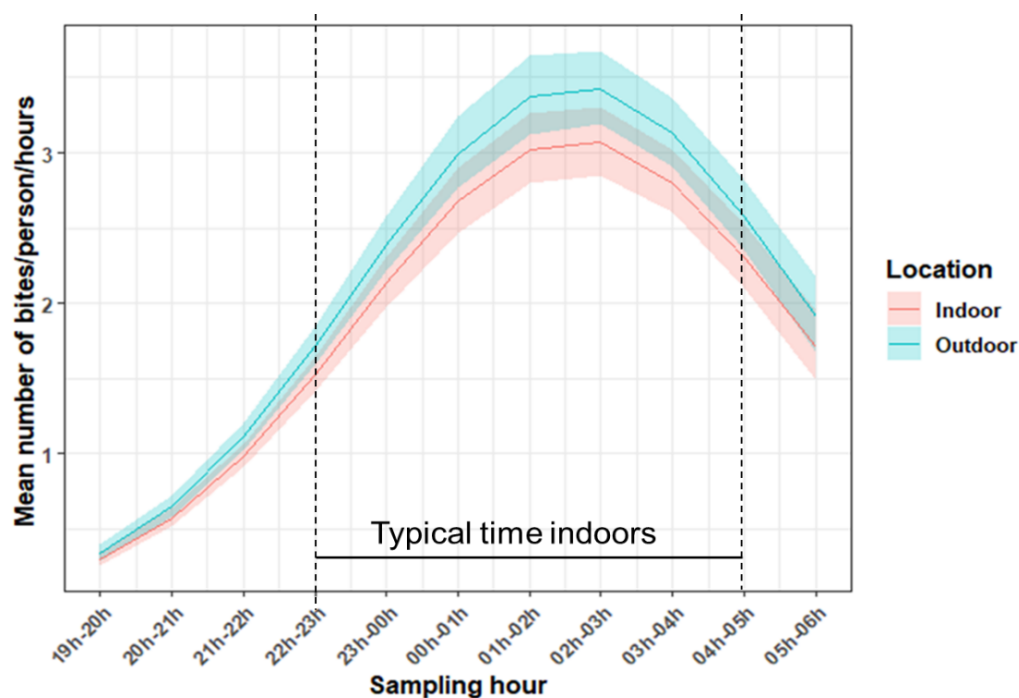
169 Overall, *Anopheles gambiae* s.l. biting activity started very low earlier in the evening (7 – 8 pm)
170 and steadily reached to a peak between 00 h and 04 h with the median biting time between
171 01 h and 02 h. Overall, about 54% [95% CI: ~51 – 57%] of *An. gambiae* complex members were
172 collected host-seeking outdoors. However, there was no long-term change in the biting

173 location across the study (Supplementary Table 2). Further analysis of the subset of *An.*
174 *gambiae* s.l. that were individually identified to species level indicated that the proportion of
175 outdoor biting varied between *An. gambiae* and *An. coluzzii* ($df = 1$, $\chi^2 = 6.82$, $p = 0.009$). In
176 addition, results here indicate that these vectors were less abundant in the indoor compare to
177 the outdoor environment. Though, *An. gambiae* was somehow host-seeking more outdoor
178 (54.73%, [95% CI: 52.35 - 57.12] compare to *An. coluzzii* [51.4%, 95% CI: 48.9 – 53.9%]).

179 The host-seeking activity showed there was similar patterns between the indoor and outdoor
180 environment (Figure 3). Although, the peak of biting occurred around mid-night, some *An.*
181 *gambiae* s.l. were caught still biting around 6 am (Figure 3). No longitudinal change in median
182 biting time was observed (Supplementary Table 2). Further analysis of the subsample of *An.*
183 *gambiae* s.l. identified to species level indicated there was difference in the median biting time
184 between *An. coluzzii* and *An. gambiae* (Supplementary Table2). *An. coluzzii* was found to bite
185 earlier (11 pm – 01 am) compared to *An. gambiae* (00 pm – 02 am). Additionally, the overall
186 proportion of *An. gambiae* s.l. females resting outdoors was ~46.97%. After controlling for the
187 effect of season there was no evidence of a longer-term change in the proportion of female
188 *An. gambiae* s.l. resting outdoors over the study period ($df = 1$, $\chi^2 = 2.67$, $p = 0.32$). Of the 94
189 *An. gambiae* s.l. females from which blood-meals could be identified, 52% were from human
190 only, 35.11% were cattle only, and 12.77% contained a mixture of cattle and human blood
191 (Table 3) resulting in an HBI of 64.9%.

192 **Table 3:** Total numbers of blood-fed female *An. gambiae* s.l. caught using Resting Bucket Traps in the
 193 12 villages, from October 2016 to December 2018 (RBT) and display by species and trapping location
 194 pool over villages, according to the blood source. HBI indicate the proportion of mosquito that blood-
 195 fed on human.

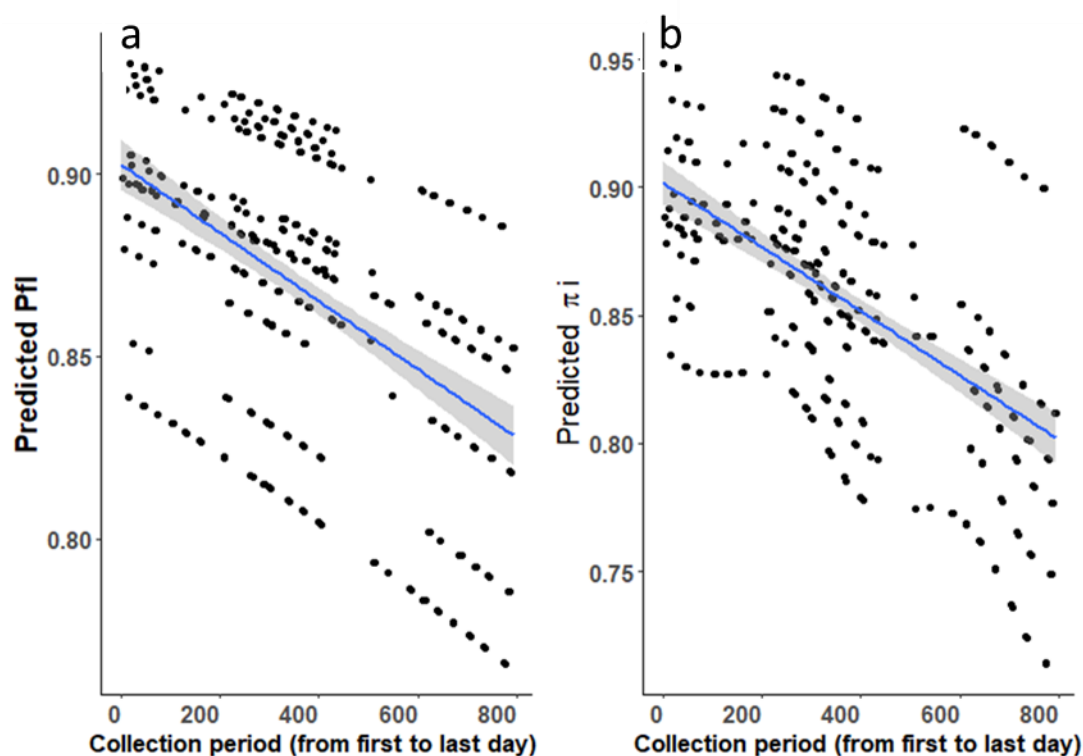
Species	Location	Cattle	Human	Human – cattle	Total	HBI
<i>An. arabiensis</i>	Indoor	1	0	0	1	0
	Outdoor	1	0	0	1	0
<i>An. coluzzii</i>	Indoor	18	23	4	45	0.6
	Outdoor	2	7	2	11	0.82
<i>An. gambiae</i>	Indoor	7	11	6	24	0.71
	Outdoor	4	8	0	12	0.67
Total		33	49	12	94	0.65



196
 197 **Figure 3:** Mean number of *An. gambiae* s.l. biting per hour (as assessed from Human Landing Catches)
 198 in 12 villages in southwestern Burkina Faso, from October 2016 to December 2018. Data are pooled
 199 over village and collection period. The period between the red vertical dashed lines indicate period-
 200 time coinciding when most people are inside their dwellings. The blue and red full lines indicate the
 201 predicted number biting in outdoor and indoor settings, respectively; with the shaded areas around
 202 them indicating the 95% confidence intervals.

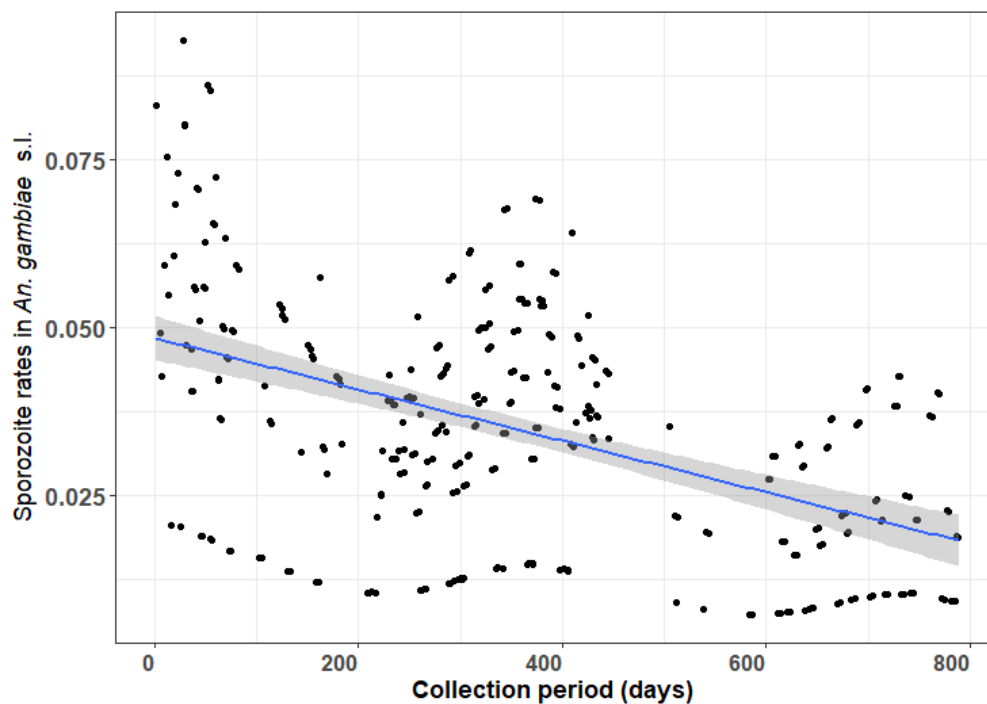
203 Malaria transmission and LLIN effectiveness

204 Overall, 86.81% [95% CI: 83.6 – 90.02%] of *An. gambiae s.l.* was caught biting between 10 pm
205 and 5 am (corresponding to time when most people are indoors, P_{fi}). Furthermore, results
206 showed that 85.45% [95% CI: 80.64 – 90.26%] of human exposure occurred when people are
207 assumed to be indoors (π_i). Thus, under the simplifying assumption that people remain under
208 an LLIN between 10 pm - 5 am [48], ~85% of exposure to *An. gambiae s.l.* could be preventable
209 by LLINs. Taking into account the variations due to village and season, results suggested that
210 there was a modest but consistent decline (for ~7%) in the proportion of biting taking place
211 when people are supposed to be indoors (Supplementary Table 3, P_{fi} : $z = -3.14$, $p = 0.002$,
212 Figure 4a) over the study period. Similarly, there was also ~10% decrease in the proportion of
213 human exposure (Supplementary Table 3, π_i : $z = -3.72$, $p = 0.0002$, Figure 4b).



214
215 **Figure 4:** Predicted mean of **a) P_{fi}** = the proportion of *An. gambiae s.l.* bites occurring when most people
216 are inside their dwellings and likely asleep (e.g. between 10 pm - 5 am; P_{fi}), **b) π_i** = total human exposure
217 to *An. gambiae s.l.* bites occurring indoors (π_i) based on Human Landing Catch from 6 villages over 2
218 years (Oct 1st, 2016 to Dec 4th, 2018) in southwestern Burkina Faso. Dots represents the predicted
219 values (P_{fi} and π_i) at each sampling night. The blue line represents the regression line from the model
220 and the grey-shaded area the 95% confidence intervals.

221 Overall, in the study area, the mean sporozoite rate (SR) was 3.48% [95%CI: 1.51 – 5.26%] in
222 *An. gambiae* s.l. Though, after taking into account, the seasonal and spatial variation, results
223 suggested that the mean SR declined from ~5% to ~2% over the study period ($z = -2.5$, $p = 0.01$,
224 Supplementary Table 4, Figure 5). However, no significant difference in this SR was found
225 between species (*An. coluzzii* and *An. gambiae*) or host-seeking location (indoor versus
226 outdoor, Supplementary Table 4). Further, the Entomological Inoculation Rate (EIR) was
227 calculated to estimate the potential epidemiological impact of temporal changes in vector
228 abundance and sporozoite rate. This was done based only on data from the subset villages (06)
229 monitored in both year 1 (Oct 2016 - Sept 2017) and year 2 (Oct 2017-Sept 2018). Here, the
230 annual EIR was considerably higher in year 1 (289.25 infective bites per person per year)
231 compare to that from year 2 (94.81 infective bites per person per year). This decline was in
232 accordance with that of the human biting rate and SR. Despite this decline, residents were still
233 predicted to be exposed to 29 infective bites per person per year after adjustment for the
234 proportion of bites (~85%) that can be prevented through effective use of LLINs.



235
236 **Figure 5:** Mean predicted longer-term trend in sporozoite infection rates in *An. gambiae* s.l. (dots). Data
237 are from 12 villages in southwestern Burkina Faso using Human Landing Catches from October 2016 to
238 December 2018. The curve blue and line indicate the regression curve and line respectively and the
239 grey-shaded areas around them indicate 95% confidence intervals.

240 Discussion

241 Here we tested for evidence of systematic changes in insecticide and behavioural resistance
242 traits in malaria vectors over 2.5 years following a mass LLIN distribution in Burkina Faso.
243 Consistent with expectation, there was a high prevalence of insecticide resistance (IR) within
244 these malaria vector populations, which further intensified over the period of the study, with
245 post-exposure mortality falling by $\sim 50\%$ (from 38% at the start to 17% at the end). In contrast,
246 although baseline levels of “behavioural avoidance” traits were higher than expected (e.g. $>$
247 50% outdoor biting and resting), behavioural phenotypes were relatively stable across the
248 study period. There was however a reduction in *An. gambiae* s.l. abundance (Human biting
249 rate) and a shift in vector species composition across the study period; with a moderate
250 reduction in the proportion of *An. coluzzii* relative to *An. gambiae*. The potential
251 epidemiological impacts of these ecological changes are diverse. On one hand, there was a
252 significant drop in the Entomological Inoculation Rate between years, indicating a fall in human
253 exposure and malaria transmission. On the other, the proportion of exposure to *An. gambiae*
254 s.l. expected to be preventable by LLIN use also fell over the study period (π_i , $\sim 7\%$ fall);
255 indicating a moderate erosion of protection from residual transmission through time. We
256 hypothesize that the fall in π_i was due to a shift in vector species composition, with the slightly
257 more exophilic *An. gambiae* increasing relative to *An. coluzzii* through time. Thus, we
258 hypothesize that while both IR and avoidance behaviours are contributing to the limited impact
259 of LLINs in this setting, behavioural traits appearing to be responding more slowly to selection
260 from LLIN.

261 The rise in IR across this study is in line with similar increases observed over short time periods
262 in other African settings [49, 50]. This acceleration in IR appears to be a relatively recent
263 phenomenon; with the post-exposure mortality of *An. gambiae* s.l. to the DD in this setting
264 being relatively similar in the 1970s when synthetic pyrethroid were first introduced for pest
265 control ($\sim 95\%$, [51]) to that reported in the 2010s [52]. The intensification of IR over the last
266 decade is likely due to the initiation of mass LLIN distribution programmes in 2010. For
267 example, post-exposure mortality of *An. gambiae* s.l. to the DD in one of our study sites
268 (Tiefora) was $\sim 39\%$ [53] in 2014 compared to only $\sim 15\%$ reported here (2016-18). Additionally,
269 in Tengrela (another study village), post exposure mortality to DD declined from $\sim 92\%$ to $\sim 19\%$
270 between 2011 and 2013 [37]. Considering the rapid rise in IR, the government of Burkina Faso

271 has recently switched 2019 to new net products that combine pyrethroids with other
272 insecticide classes (e.g. Interceptor G2: alpha-cypermethrin and chlorfenapyr; PBO-LLINs:
273 deltamethrin and the synergist piperonyl butoxide).

274 While insecticide resistance increased significantly over the study, mosquito vector behaviours
275 were generally static. However, some mosquito behavioural traits observed here differ
276 substantially from historical reports in the study area; raising the possibility of more gradual
277 long-term changes that may not be detectable over a few years. For example, previous studies
278 from the Central, Plateau Central and West regions (2001-2015) of Burkina Faso reported *An.*
279 *gambiae* s.l. was more likely to bite indoors than outdoors [43, 54], or had an even split
280 between indoor and outdoor biting [46]. In contrast, here *An. gambiae* s.l. was more likely to
281 host seek outdoors [$\sim 54\%$; 95% CI: $\sim 51 - 57\%$]. Additionally, a recent review of *An. gambiae*
282 s.l. biting behaviour from a range of African countries that concluded in general $> 80\%$ of vector
283 bites occur indoors [28]; substantially higher than observed here. *Anopheles gambiae* s.l. were
284 also found in indoor and outdoor resting traps with relatively similar frequency (53% versus
285 47%); in contrast to earlier studies in south western Burkina Faso where indoor resting was
286 more common ($\sim 67\%$; [55]). The Human Blood Index ($\sim 65\%$) of these *An. gambiae* s.l.
287 populations was also lower than previously reported in Burkina Faso ($> 77\%$; [56]) and Benin
288 ($> 90\%$, [57]). Thus, although there was no clear evidence of mosquito behavioural change
289 across the two years of this study, comparison with historical and wider regional data suggest
290 that lower acting adaptations may be ongoing in tandem with more rapid insecticide
291 resistance.

292 LLINs have also been hypothesized to generate selection on mosquito biting times; with
293 vectors shifting to bite earlier in the evening before people go to bed [58] to avoid this
294 intervention. Here, *An. gambiae* s.l. still exhibited the characteristic “late night” pattern of
295 biting, with no evidence of a shift over the study. The biting pattern observed here is consistent
296 with early work on *An. gambiae* s.l. before mass LLIN use which also found biting rates peaked
297 around 00 h [12, 59]. Similarly, a study in western Kenya found *An. gambiae* s.l. and *An.*
298 *funestus* continued biting late in the night even in presence of LLINs [60]. However, other
299 studies have detected substantial shifts in malaria vector biting times in association with
300 interventions, including a recent report from Senegal of *An. funestus*, biting earlier morning

301 and into daylight hours [61]. Adaptations in biting time may arise more rapidly in other settings
302 due to variation in local ecology and background levels of IR.

303 Some previous studies that have reported shifts in malaria vector behaviour (e.g.[27, 62]), did
304 not identify to species level, thus preventing interpretation of whether changes were due to
305 within species adaptations or ecological shifts in species composition. While behavioural
306 phenotypes remained relatively fixed within vector species in this study, there was an evidence
307 of a longitudinal shift in malaria vector species composition characterized by a reduction in *An.*
308 *coluzzii* relative to *An. gambiae*. The proportion of outdoor biting was slightly higher in *An.*
309 *gambiae* (55%) than *An. coluzzii* (51%), thus the relative decline in *An. coluzzii* is consistent with
310 the prediction that LLINs will have a greater impact on endophagic vector species. For example,
311 highly anthropophagic and endophagic vector species like *An. gambiae* [63] and *An.*
312 *quadriannulatus* [64] have decline more significantly than the more zoophagic and exophagic
313 *An. arabiensis* following ITN introduction in East Africa. This adds to the growing body of
314 evidence from across Africa showing that LLINs can provoke shifts in malaria vector species
315 communities. Such ecological shifts may occur more rapidly than longer-term behavioural
316 adaptations within species.

317 Taken in combination, these results suggest that IR may be the first line of defence to ITNs
318 compare to behavioural change in mosquito vectors given most human hosts are indoors,
319 and/or that behavioural phenotypes have less capacity for adaptation than those involved with
320 IR. Differences in the rate of change in IR and mosquito behavioural traits also likely reflect
321 their genetic basis. Mosquito behaviours are likely complex multigenic traits [65], governed by
322 many genes (some possibly antagonistic) that may limit capacity to respond quickly to
323 selection. There is some evidence that behaviours like human host choice [65] and
324 outdoor/indoor biting or resting [66] have a genetic basis in African malaria vectors. The
325 genetic basis of IR traits is well established [18, 67], with some IR mechanisms linked to a single
326 point mutation (e.g. Knock-down resistance [16] ; indicating this type of resistance may
327 respond rapidly and efficiently to selection. It is known that vector population in Burkina Faso
328 evolved high frequency of target site mutation (e.g. frequency of the L1014F type > 0.8 [68])
329 that may explain why they may be able to adapt quicker.

330 The potential epidemiological impacts of the vector adaptations observed here are complex.
331 On one hand, results indicate that LLINs can still effectively prevent the bulk of human
332 exposure to malaria vectors (~85%) in this setting. Additionally, vector abundance, malaria
333 infection rates and the associated Entomological Inoculation Rate fell across the study;
334 suggesting a transmission decline. However, this degree of protection expected from LLIN use
335 (85%) is somewhat lower than estimated from other parts of Burkina Faso (90%, in 2002-2004),
336 and Africa (95 – 99%; [69]). Furthermore, the longitudinal changes in vector populations
337 described here can further diminish LLIN impact. First, the intensification of IR is likely to
338 erode the community protection, afforded to non-net users. Second the proportion of
339 exposure preventable by using LLINs (π_i) was predicted to decline over the study period. Even
340 if the proportion of human exposure preventable by LLIN use remained at current levels, high
341 levels of residual transmission will persist because of the relatively high abundance and malaria
342 infection rates in these vector populations. People in this area are estimated to be exposed to
343 between ~215 infective bites per person per year even if they sleep under an LLIN between 10
344 pm – 5 am. The small shifts in P_{fl} and π_i observed through time could further increase this
345 exposure. Interventions that tackle both insecticide resistant and outdoor biting mosquitoes
346 will thus be needed to tackle residual transmission.

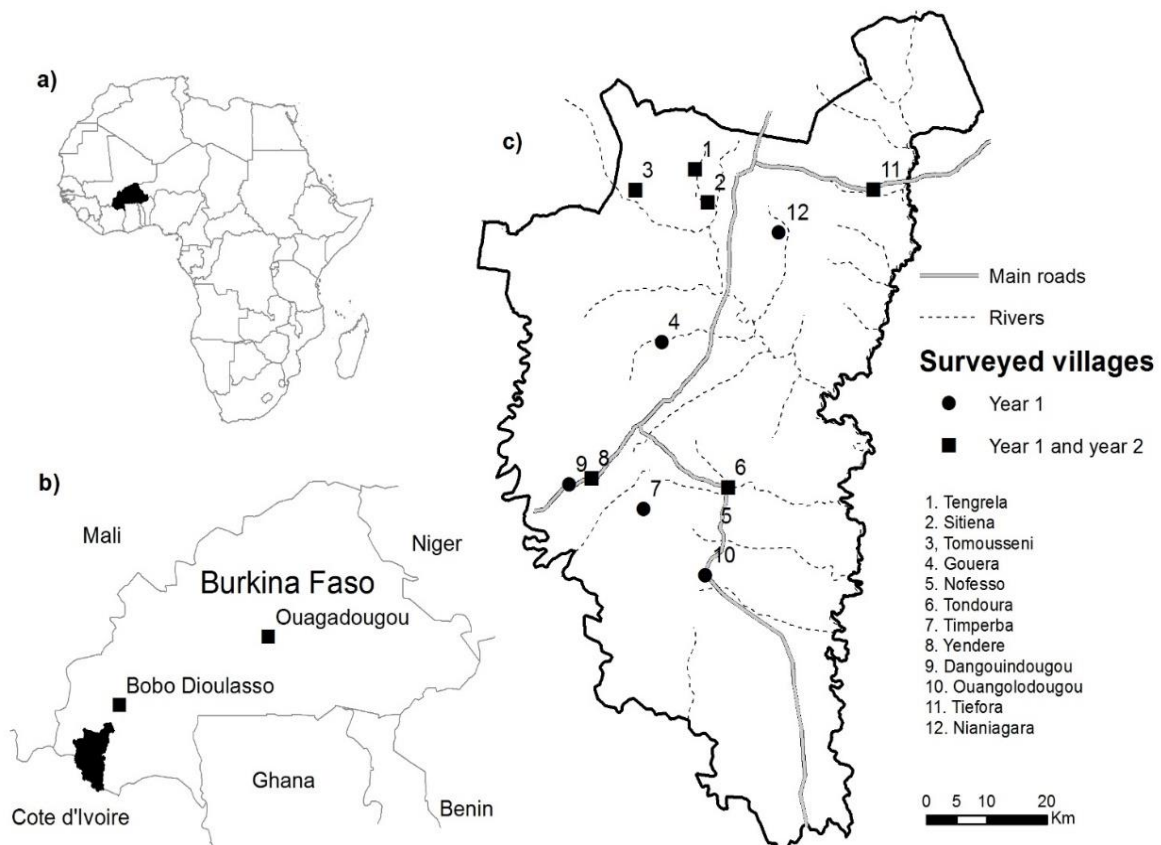
347 **Conclusions**

348 Both insecticide resistance and behavioural avoidance strategies in *An. gambiae* s.l. are
349 contributing to the erosion of malaria vector control impact across Africa. In a longitudinal
350 study in Burkina Faso, we show that IR increases more rapidly than behavioural adaptations
351 following the mass distribution of insecticidal nets. Although mosquito behaviours stayed
352 relatively stable over the study, baseline traits indicated a higher capacity for ‘behavioural
353 avoidance’ of nets (through outdoor biting and resting) than historical data. This highlights the
354 possibility that behavioural traits are adapting but at a more gradual rate than physiological
355 resistance. As most human exposure to infected mosquitoes still occurs indoors in this and
356 other African settings, effective indoor interventions must still be prioritized including the use
357 of novel insecticide classes on nets and sprays and non-insecticidal approaches. However, the
358 proportion of exposure occurring outdoors is notable and increasing. Supplementary measures
359 tackling human exposure in and outdoors will thus be required to reclaim progress and tackle
360 residual transmission in this and other high burden African settings.

361 **Methods**

362 **Study site**

363 This study was conducted in 12 villages within the Banfora District, in the Cascades Region,
364 south-western Burkina Faso (Supplementary Table 5, Figure 6). In 2018, the population size of
365 the region was 822,445 [70]. The region has a humid savannah climate characterized by a rainy
366 (May to October) and dry season (November to April). Annual rainfall ranges from 600-900
367 mm; with a mean temperature of ~26 °C [15.7 °C - 38.84 °C] and humidity of ~62% [15.11 -
368 99.95%] during the study. Malaria is endemic in the region, with an incidence of Plasmodium
369 falciparum being ~3 episodes per child of 6 - 14 years old over the six month annual
370 transmission season [32].



371

372 Figure 6: Map of the 12 study villages. **a)** location of Burkina Faso within Africa, **b)** study area in the
373 Cascades Region in Burkina Faso, and **c)** villages where mosquito collection took place. Circles represent
374 the villages sampled for 18 months and squares represent the villages that were part of the longer-
375 term study site and where sampling was extended to 26 months.

376 **Insecticide resistance monitoring**

377 We aimed to measure IR in all 12 original study sites at least once during the wet and dry
378 season of each year. Due to the limited availability of larval habitats in some villages and
379 months (especially during the dry season), IR monitoring was only possible in 9 villages
380 (Supplementary Table 6 & 7). Larvae were collected from aquatic habitats and reared to
381 adulthood under standard conditions [71]. Insecticide resistance assays were performed by
382 exposing groups of 22 - 27 adult female *An. gambiae s.l.* to the World Health Organization
383 discriminating dose for deltamethrin (DD = 0.05%, a concentration that can kill 99.9% of a
384 susceptible population [72]), 5 times (0.25%), 10 times (0.5%) and 15 times (0.75%) the DD
385 respectively (Supplementary Table 6). Mosquitoes were exposed to insecticide-treated papers
386 obtained from WHO / Vector Control Research Unit, University Sains Malaysia [73], following
387 WHO guidelines for Tube bioassays [72].

388 **Assessment of human biting rate and behaviours**

389 Vector surveillance was conducted to measure human biting rates (HBR) and mosquito resting
390 behaviours bi-monthly at all 12 sites for the 16 months (Oct 2016 -Feb 2018, Figure 6).
391 Additionally, surveillance continued for a further 10 months (Feb- Dec 2018) in a subset of 6
392 villages to generate longer-term data. The longer-term study villages were selected to achieve
393 a relatively broad spatial distribution.

394 Host-seeking mosquitoes were sampled twice a month in each village from 2 different
395 households per day using Human Landing Catches (HLC). Here, men collected mosquitoes
396 landing on their exposed leg using a mouth aspirator and flash torches [74]. Collection took
397 place both inside houses and outdoors (the peridomestic area) from 7 pm to 6am each night.
398 During each hour of collection, participants caught mosquitoes for 45 minutes, followed by a
399 15-minute rest break. Participants involved in mosquito collections rotated between indoor
400 and outdoor trapping stations each hour to avoid confounding location with individual
401 differences in attractiveness to mosquitoes.

402 In addition, Resting Box Traps (RBTs) were placed in and outside houses [75] to sample resting
403 mosquitoes. These RBTs were made locally using 20 L plastic buckets, with their inner surface
404 covered with moistened black cotton cloth to create a high contrast and humid environment.

405 On each night of collections, two RBTs were placed in the same households where HLCs took
406 place (set within different houses in the compound). Inside houses, RBTs were placed on the
407 floor in a relatively shaded corner of the sitting room. Two RBTs were also set outdoors at ~8
408 metres from houses to capture outdoor resting mosquitoes. RBTs were set up at approximately
409 7 pm and emptied the following morning (~5 am) using electrical aspirators.

410 **Mosquito processing**

411 Mosquitoes collected in HLCs and RBTs were transferred to an insectary in Banfora town and
412 sorted to species complex level using morphological keys [76]. Of those identified as belonging
413 to the malaria vector group *An. gambiae* s.l., a subset of 7852 females (~20 % of total) were
414 selected to provide a representative sample from each month, village, trapping location
415 (indoor vs outdoor) for identification to species level by PCR [77]. The subsampling strategy is
416 described elsewhere [78]. Furthermore, malaria infection in mosquitoes was assessed by
417 testing for the presence of *Plasmodium falciparum* circumsporozoite protein (CSP) in their
418 head and thoraxes using a monoclonal sandwich Enzyme Linkage Immuno-Sorbent Assay
419 (ELISA) developed by [79]. Additionally, female *An. gambiae* s.l. from the RBT collections were
420 visually graded according to their repletion status (abdominal condition) into categories of
421 blood-fed, unfed, gravid, and half gravid [80]. Blood-meal identification was carried out on
422 blood-fed *An. gambiae* s.l. to determine the origin of their blood-meal (human, cattle or both
423 [81]) using a direct Enzyme Linkage Immuno-Sorbent Assay (ELISA; [82]). The degree of
424 “anthrophagy” in vectors was estimated in terms of the “human blood index” (HBI) [83],
425 defined as the proportion of identified blood meals taken from humans. In ELISA tests (for
426 sporozoite and blood meal source identification), two technical replicates of each sample were
427 run in two different microplates at the same time and retested in cases where the first result
428 was ambiguous. The absorbance of the solutions/reactions at the end of each ELISA was
429 measured using microplate reader (Elx808; Bio-Tek) at 450 nm. To avoid any false positives
430 (due to background noise), a sample was considered positive for an assay when its optical
431 density (OD) was 2-fold higher than the average of the OD of both negative controls. Positive
432 controls were also used in all ELISAs to ensure the procedure was working.

433 Data analysis

434 Statistical analysis was conducted with the aim of testing for “longitudinal shifts” (over 26
435 months) in key indicators of vector demography, species composition, IR and behaviour using
436 Generalized Additive Mixed-Models (GAMMs) in the R statistical software (version 3.6.1 of
437 2019-07-05) [84]. Insecticide resistance was measured in terms of mosquito mortality 24 hours
438 after exposure to deltamethrin (different doses). Long-term trends in all ecological,
439 behavioural and insecticide resistance variables were assessed after controlling for spatial
440 (between-village) and environmental (season, temperature and humidity) variation. The key
441 response variables were: (i) the proportion of mosquitoes dying within 24 hours of DD
442 exposure, (ii) Human biting rate and species composition (proportion of *An. coluzzii* in *An.*
443 *gambiae s.l.*), (iii) proportion of outdoor biting and resting, (iv) median biting time, (v)
444 proportion of human exposure to bites, vi) the sporozoite rate and the vii) the entomological
445 inoculation rates. To assess longer-term trends occurring over the 26 months of the study, a
446 temporal variable was created by assigning a continuous value to each day of collections from
447 the first (1 October 2016) until the last (4 December 2018), hereafter called “Longer_term”
448 (Supplementary Table 8). This was incorporated into models as a continuous covariate to test
449 for evidence of a consistent temporal rise or decline after accounting for seasonal and spatial
450 variation. Seasonality was incorporated by fitting a smoothing spline where each day of the
451 year was classified on a scale running from 1 (set as January 1st) to 365 (December 31st)
452 hereafter called “Season” (Supplementary Table 8), and spatial variation by fitting village as a
453 fixed effect. The mean nightly temperature and humidity at collection households were
454 derived from hourly values (7 pm - 6 am) obtained from data loggers and included as additional
455 explanatory variables (Supplementary Table 8).

456 Data on the time and location of biting were combined for estimating two metrics of human
457 exposure to bites from *An. gambiae s.l.*: the proportion of *An. gambiae s.l.* caught during hours
458 when typically, $\geq 50\%$ of people were indoors and likely to be in bed (P_{fi}). Based on visual
459 surveys described in [78] over 672 households, we estimated that $> 50\%$ of residents were
460 indoors between 10 pm and 5 am consistently across the study period; although more recent,
461 detailed anthropological investigation indicates time indoors may vary substantially between
462 individuals and seasons and be lower assumed here [48]. The P_{fi} was estimated following [42]
463 by dividing the total number of *An. gambiae s.l.* collected indoors and outdoors when $\geq 50\%$ of

464 people were indoors (10 pm to 5 am) by the total number collected that night. The proportion
465 of human exposure to bites that occur indoors (π_i) was then calculated by dividing the number
466 of *An. gambiae* s.l. collected indoors between 10 pm – 5 am by itself plus those collected
467 outdoors when >50% of residents were outdoors and thus unprotected by LLINs (between 7 –
468 10 pm and 5 – 6 am (Supplementary Table 8). Within the R statistical software [84] GAMMs
469 within the ‘mgcv package’ [85] augmented with the lme4 package [86] known as GAMM4 were
470 used to test for associations between IR, all vector ecological and behavioural metrics and
471 explanatory variables of village, season, “longer-term” trend and environmental factors.
472 Details of fixed and random effects and distribution are given in Supplementary Table 8. Due
473 to the low number of mosquitoes caught in RBTs, it was not possible to test for spatial and
474 long-term variation in the abundance of resting mosquitoes. Instead, the proportion of *An.*
475 *gambiae* s.l. resting outdoors across the whole study period was assessed. Mosquito host
476 choice was assessed in terms of the HBI, the proportion of blood-fed *An. gambiae* s.l. tested
477 positive for human blood out of the total from which blood-meals were identified (N = 94).
478 Furthermore, the EIR defined as the average number of infective bites a person (ibppn) would
479 expect to receive from *An. gambiae* s.l. in a given location per year. This EIR was calculated as
480 the product of the mean nightly human biting rate (*ma*) and vector sporozoite infection rates
481 (SR) multiplied by 365 days [41] for the six villages that were monitored over two years.

482 ***Ethical approval***

483 Ethical clearance was obtained from the Ethical Committee for research in Health of the
484 Ministry of Health of Burkina Faso (EC V3.0_CERS N°2016-09-097) and the Institutional
485 Bioethical Committee of the local research institution (National Malaria Research and Training
486 Centre, CNRFP) under EC V3.0_ N°2016-026/MS/SG/CNRFP/CIB) and the Liverpool School of
487 Tropical Medicine (Certificate 16-038). Prior to starting the research, the project aims, and
488 objectives were explained to community leaders in each village. Signed informed consent was
489 also obtained from all household owners where mosquitoes were collected, and volunteers
490 who took part in mosquito collections by HLC. We confirm that all methods were performed in
491 accordance with the relevant guidelines and regulations.

492 ***Data accessibility***

493 All data are provided as Figures and Supplementary materials

494 ***Author's contributions***

495 AS designed the study, conducted the field data collection, did the molecular analysis,
496 performed the data analysis, interpreted the results, and drafted the manuscript. WMG, NFS,
497 HR and HMF contributed to the design of the study and the sampling protocol and provided
498 comments upon the manuscript. HMF was a major contributor in writing this manuscript.
499 MMT, FC and PO contributed to the molecular analysis in the labs. LN, JM, contributed to the
500 data analysis. All authors read and approved the final version of the manuscript.

501 **Competing interests**

502 We declare we have no competing interests

503 **Funding**

504 This work was supported by the Wellcome Trust under grant agreement number
505 [200222/Z/15/Z] MiRA through the “Improving the efficacy of malaria prevention in an
506 insecticide resistant Africa (MiRA)”.

507 **Acknowledgements**

508 We thank all the head of the villages, all the communities, household owners and the
509 volunteers for their collaboration and help in data collection. Thank also to all the field and
510 lab teams for the great job in the data collection and processing.

511 **References**

- 512 1. Lengeler, C., *Insecticide-treated bed nets and curtains for preventing malaria*, in *Cochrane*
513 *Database Syst Rev.* 2004.
- 514 2. Pluess, B., et al., *Indoor residual spraying for preventing malaria (Review)*, in *Cochrane Review*.
515 2010.
- 516 3. WHO, *Guidelines for malaria vector control*. 2019,
517 <https://www.who.int/malaria/publications/atoz/9789241550499/en/> , accessed 08
518 Septembe 2019: Geneva: World Health Organization.

- 519 4. Bhatt, S., et al., *The effect of malaria control on Plasmodium falciparum in Africa between*
520 *2000 and 2015*. Nature, 2015. **526**(7572): p. 207-211.
- 521 5. Killeen, G.F., et al., *Made-to-measure malaria vector control strategies: rational design based*
522 *on insecticide properties and coverage of blood resources for mosquitoes*. Malaria Journal,
523 2014. **13**(1): p. 146.
- 524 6. Waite, J.L., et al., *Increasing the potential for malaria elimination by targeting zoophilic*
525 *vectors*. Scientific Reports, 2017. **7**: p. 40551.
- 526 7. Cooke, M.K., et al., *A bite before bed': exposure to malaria vectors outside the times of net use*
527 *in the highlands of western Kenya*. Malaria Journal, 2015. **14**(1): p. 259.
- 528 8. Milali, M.P., M.T. Sikulu-Lord, and N.J. Govella, *Bites before and after bedtime can carry a high*
529 *risk of human malaria infection*. Malaria Journal, 2017. **16**(1): p. 91.
- 530 9. Pates, H., et al., *Differential behaviour of Anopheles gambiae sensu stricto (Diptera: Culicidae)*
531 *to human and cow odours in the laboratory*. Bulletin of entomological research, 2001. **91**(4):
532 p. 289-296.
- 533 10. Costantini, C., et al., *Odor-mediated host preferences of West African mosquitoes, with*
534 *particular reference to malaria vectors*. The American journal of tropical medicine and
535 hygiene, 1998. **58**(1): p. 56-63.
- 536 11. Gillies, M.T. and B. DeMeillon, *The Anophelinae of Africa South of the Sahara (Ethiopian*
537 *zoogeographical region)*. 1968, Johannesburg: South African Institute for Medical Research.
- 538 12. Hamon, J. *Les moustiques anthropophiles de la région de Bobo-Dioulasso (République de*
539 *Haute-Volta): cycles d'agressivité et variations saisonnières*. in *Annales de la Societe*
540 *Entomologique de France*. 1963.
- 541 13. Nyarango, P.M., et al., *A steep decline of malaria morbidity and mortality trends in Eritrea*
542 *between 2000 and 2004: the effect of combination of control methods*. Malaria journal, 2006.
543 **5**(1): p. 33.
- 544 14. WHO, *World malaria report 2019*, in *Licence: CC BY-NC-SA 3.0 IGO*,
545 <https://www.who.int/news-room/feature-stories/detail/world-malaria-report-2019>
546 *[accessed on 17.12.2019]*, G.W.H.O. 2019., Editor. 2019.
- 547 15. Hancock, P.A., et al., *Mapping trends in insecticide resistance phenotypes in African malaria*
548 *vectors*. PLoS biology, 2020. **18**(6): p. e3000633.
- 549 16. Martinez-Torres, D., et al., *Molecular characterization of pyrethroid knockdown resistance*
550 *(kdr) in the major malaria vector Anopheles gambiae ss*. Insect Molecular Biology, 1998. **7**(2):
551 p. 179-184.

- 552 17. Balabanidou, V., et al., *Cytochrome P450 associated with insecticide resistance catalyzes*
553 *cuticular hydrocarbon production in Anopheles gambiae*. Proc Natl Acad Sci U S A, 2016.
554 **113**(33): p. 9268-73.
- 555 18. Edi, C.V., et al., *CYP6 P450 enzymes and ACE-1 duplication produce extreme and multiple*
556 *insecticide resistance in the malaria mosquito Anopheles gambiae*. PloS Genet, 2014. **10**(3): p.
557 e1004236.
- 558 19. Kreppel, K., et al., *Emergence of behavioural avoidance strategies of malaria vectors in areas*
559 *of high LLIN coverage in Tanzania*. Scientific reports, 2020. **10**(1): p. 1-11.
- 560 20. Moiroux, N., et al., *Human exposure to early morning Anopheles funestus biting behavior and*
561 *personal protection provided by long-lasting insecticidal nets*. PloS One, 2014. **9**.
- 562 21. Reddy, M.R., et al., *Outdoor host seeking behaviour of Anopheles gambiae mosquitoes*
563 *following initiation of malaria vector control on Bioko Island, Equatorial Guinea*. Malaria
564 journal, 2011. **10**(1): p. 184-184.
- 565 22. Rozendaal, J., et al., *Behavioral responses of Anopheles darlingi in Suriname to DDT residues*
566 *on house walls*. Journal of the American Mosquito Control Association, 1989. **5**(3): p. 339-350.
- 567 23. Mwangangi, J.M., et al., *Shifts in malaria vector species composition and transmission*
568 *dynamics along the Kenyan coast over the past 20 years*. Malaria journal, 2013. **12**(1): p. 1.
- 569 24. Sougoufara, S., et al., *Shift in species composition in the Anopheles gambiae complex after*
570 *implementation of long-lasting insecticidal nets in Dielmo, Senegal*. Medical and Veterinary
571 Entomology, 2016. **30**(3): p. 365-368.
- 572 25. Moiroux, N., et al., *Changes in Anopheles funestus biting behaviour following universal*
573 *coverage of long-lasting insecticidal nets in Benin*. J Infect Dis, 2012. **206**.
- 574 26. Matowo, N.S., et al., *Using a new odour-baited device to explore options for luring and killing*
575 *outdoor-biting malaria vectors: a report on design and field evaluation of the Mosquito*
576 *Landing Box*. Parasites & Vectors, 2013. **6**(1): p. 1-16.
- 577 27. Russell, T.L., et al., *Increased proportions of outdoor feeding among residual malaria vector*
578 *populations following increased use of insecticide-treated nets in rural Tanzania*. Malaria
579 Journal, 2011. **10**.
- 580 28. Sherrard-Smith, E., et al., *Mosquito feeding behavior and how it influences residual malaria*
581 *transmission across Africa*. Proceedings of the National Academy of Sciences, 2019. **116**(30):
582 p. 15086-15095.
- 583 29. Dambach, P., et al., *Reduction of malaria vector mosquitoes in a large-scale intervention trial*
584 *in rural Burkina Faso using Bti based larval source management*. Malaria Journal, 2019. **18**(1):
585 p. 311.

- 586 30. Bayili, K., et al., *Evaluation of efficacy of Interceptor (R) G2, a long-lasting insecticide net*
587 *coated with a mixture of chlorfenapyr and alpha-cypermethrin, against pyrethroid resistant*
588 *Anopheles gambiae s.l. in Burkina Faso*. Malaria Journal, 2017. **16**: p. 9.
- 589 31. Oumbouke, W.A., et al., *Evaluation of an alpha-cypermethrin + PBO mixture long-lasting*
590 *insecticidal net VEERALIN® LN against pyrethroid resistant Anopheles gambiae s.s.: an*
591 *experimental hut trial in M'bé, central Côte d'Ivoire*. Parasites & Vectors, 2019. **12**(1): p. 544.
- 592 32. Yaro, J.B., et al., *A cohort study to identify risk factors for Plasmodium falciparum infection in*
593 *Burkinabe children: implications for other high burden high impact countries*. Malaria Journal,
594 2020. **19**(1): p. 371.
- 595 33. Dabire, K., et al., *Anopheles funestus (Diptera: Culicidae) in a humid savannah area of western*
596 *Burkina Faso: bionomics, insecticide resistance status, and role in malaria transmission*.
597 Journal of medical entomology, 2007. **44**(6): p. 990-997.
- 598 34. Badolo, A., et al., *Three years of insecticide resistance monitoring in Anopheles gambiae in*
599 *Burkina Faso: resistance on the rise?* Malaria Journal, 2012. **11**(1): p. 1.
- 600 35. Hamon, J., et al., *Présence dans le Sud-Ouest de la Haute-Volta d'une population d'Anopheles*
601 *gambiae" A" résistante au DDT*. 1968, Genève: Organisation mondiale de la Santé.
- 602 36. Hamon, J., et al., *Présence dans le Sud-Ouest de la Haute-Volta de populations d'Anopheles*
603 *funestus Giles résistantes à la dieldrine*. Médecine Tropicale, 1968. **28**(2): p. 222-226.
- 604 37. Toe, H., *Characterisation of insecticide resistance in Anopheles gambiae from Burkina Faso*
605 *and its impact on current malaria control strategies*. 2015, University of Liverpool.
- 606 38. Namountougou, M., et al., *Insecticide resistance mechanisms in Anopheles gambiae complex*
607 *populations from Burkina Faso, West Africa*. Acta Tropica, 2019. **197**: p. 105054.
- 608 39. Toe, K.H., et al., *Increased pyrethroid resistance in malaria vectors and decreased bed net*
609 *effectiveness, Burkina Faso*. Emerg Infect Dis, 2014. **20**.
- 610 40. Beier, J.C., G. Killeen, and J.I. Githure, *Entomologic inoculation rates and Plasmodium*
611 *falciparum malaria prevalence in Africa*. Am J Trop Med Hyg, 1999. **61**.
- 612 41. Smith, D.L., et al., *The entomological inoculation rate and Plasmodium falciparum infection in*
613 *African children*. Nature, 2005. **438**.
- 614 42. Killeen, G.F., et al., *Quantifying behavioural interactions between humans and mosquitoes:*
615 *Evaluating the protective efficacy of insecticidal nets against malaria transmission in rural*
616 *Tanzania*. BMC Infect Dis, 2006. **6**.
- 617 43. Huho, B., et al., *Consistently high estimates for the proportion of human exposure to malaria*
618 *vector populations occurring indoors in rural Africa*. International journal of epidemiology,
619 2013. **42**(1): p. 235.

- 620 44. Robert, V. and P. Carnevale, *Influence of deltamethrin treatment of bed nets on malaria*
621 *transmission in the Kou valley, Burkina Faso*. Bulletin of the World Health Organization, 1991.
622 **69**(6): p. 735.
- 623 45. Dabire, K., et al., *Year to year and seasonal variations in vector bionomics and malaria*
624 *transmission in a humid savannah village in west Burkina Faso*. Journal of Vector Ecology,
625 2008. **33**(1): p. 70-75.
- 626 46. Epopa, P.S., et al., *Seasonal malaria vector and transmission dynamics in western Burkina*
627 *Faso*. Malaria Journal, 2019. **18**(1): p. 113.
- 628 47. Dambach, P., et al., *Nightly Biting Cycles of Anopheles Species in Rural Northwestern Burkina*
629 *Faso*. Journal of Medical Entomology, 2018. **55**(4): p. 1027-1034.
- 630 48. Guglielmo, F., et al., *Quantifying variation in exposure risk to mosquito bites at the individual*
631 *level in Burkina Faso* Malaria Journal, 2020, accepted
- 632 49. Edi, C.A., et al., *Long-term trends in Anopheles gambiae insecticide resistance in Côte d'Ivoire*.
633 Parasites & vectors, 2014. **7**(1): p. 500.
- 634 50. Fuseini, G., et al., *Evaluation of the residual effectiveness of Fludora™ fusion WP-SB, a*
635 *combination of clothianidin and deltamethrin, for the control of pyrethroid-resistant malaria*
636 *vectors on Bioko Island, Equatorial Guinea*. Acta Tropica, 2019. **196**: p. 42-47.
- 637 51. Rongsriyam, Y. and J. Busvine, *Cross-resistance in DDT-resistant strains of various mosquitoes*
638 *(Diptera, Culicidae)*. Bulletin of Entomological Research, 1975. **65**(3): p. 459-471.
- 639 52. Chandre, F., et al., *Status of pyrethroid resistance in Anopheles gambiae sensu lato*. Bulletin of
640 the World Health Organization, 1999. **77**(3): p. 230-234.
- 641 53. Bagi, J., et al., *When a discriminating dose assay is not enough: measuring the intensity of*
642 *insecticide resistance in malaria vectors*. Malaria journal, 2015. **14**(1): p. 210.
- 643 54. Robert, V., et al., *Etude des taux de parturité et d'infection du complexe Anopheles gambiae*
644 *dans la rizière de la vallée du Kou, Burkina Faso*. Le paludisme en Afrique de l'Ouest, 1991: p.
645 17.
- 646 55. Pombi, M., et al., *The Sticky Resting Box, a new tool for studying resting behaviour of*
647 *Afrotropical malaria vectors*. Parasites & vectors, 2014. **7**(1): p. 247.
- 648 56. Gnémé, A., et al., *Anopheline occurrence and the risk of urban malaria in the city of*
649 *Ouagadougou, Burkina Faso*. 2019.
- 650 57. Akogbéto, M.C., et al., *Blood feeding behaviour comparison and contribution of Anopheles*
651 *coluzzii and Anopheles gambiae, two sibling species living in sympatry, to malaria transmission*
652 *in Alibori and Donga region, northern Benin, West Africa*. Malaria Journal, 2018. **17**(1): p. 307.

- 653 58. Wamae, P.M., et al., *Early biting of the Anopheles gambiae s.s. and its challenges to vector*
654 *control using insecticide treated nets in western Kenya highlands*. Acta Tropica, 2015. **150**: p.
655 136-142.
- 656 59. Gillies, M., *Age-groups and the biting cycle in Anopheles gambiae. A preliminary investigation*.
657 Bulletin of Entomological Research, 1957. **48**(3): p. 553-559.
- 658 60. Bayoh, M., et al., *Persistently high estimates of late night, indoor exposure to malaria vectors*
659 *despite high coverage of insecticide treated nets*. Parasit Vectors, 2014. **7**.
- 660 61. Sougoufara, S., et al., *Biting by Anopheles funestus in broad daylight after use of long-lasting*
661 *insecticidal nets: a new challenge to malaria elimination*. Malaria Journal, 2014. **13**.
- 662 62. Meyers, J.I., et al., *Increasing outdoor host-seeking in Anopheles gambiae over 6 years of*
663 *vector control on Bioko Island*. Malaria Journal, 2016. **15**(1): p. 1.
- 664 63. Bayoh, M.N., et al., *Anopheles gambiae: historical population decline associated with regional*
665 *distribution of insecticide-treated bed nets in western Nyanza Province, Kenya*. Malaria
666 Journal, 2010. **9**(1): p. 62.
- 667 64. Chinula, D., et al., *Proportional decline of Anopheles quadriannulatus and increased*
668 *contribution of An. arabiensis to the An. gambiae complex following introduction of indoor*
669 *residual spraying with pirimiphos-methyl: an observational, retrospective secondary analysis*
670 *of pre-existing data from south-east Zambia*. Parasites & vectors, 2018. **11**(1): p. 544.
- 671 65. Main, B.J., et al., *The genetic basis of host choice and resting behavior in the major African*
672 *malaria vector, Anopheles arabiensis*. bioRxiv, 2016: p. 044701.
- 673 66. Coluzzi, M., et al., *Behavioral divergences between mosquitos with different inversion*
674 *karyotypes in polymorphic populations of Anopheles gambiae complex*. Nature, 1977. **266**: p.
675 832-3.
- 676 67. Elanga-Ndille, E., et al., *The G119S Acetylcholinesterase (Ace-1) Target Site Mutation Confers*
677 *Carbamate Resistance in the Major Malaria Vector Anopheles gambiae from Cameroon: A*
678 *Challenge for the Coming IRS Implementation*. Genes, 2019. **10**(10): p. 790.
- 679 68. Toé, K.H., et al., *The recent escalation in strength of pyrethroid resistance in Anopheles coluzzi*
680 *in West Africa is linked to increased expression of multiple gene families*. BMC genomics, 2015.
681 **16**(1): p. 146.
- 682 69. Finda, M.F., et al., *Linking human behaviours and malaria vector biting risk in south-eastern*
683 *Tanzania*. PloS One, 2019. **14**(6): p. e0217414.
- 684 70. INSD. *Annuaire sttistique 2018* Burkina Faso: Institut national de la statistique et de la
685 *démographie 2019 09/012/2019*]].

- 686 71. Benedict, M.Q., *Care and maintenance of anopheline mosquito colonies*, in *The molecular*
687 *biology of insect disease vectors*. 1997, Springer. p. 3-12.
- 688 72. WHO, *Test procedures for insecticide resistance monitoring in malaria vector mosquitoes - 2nd*
689 *edition*. Geneva, World Health Organization 2016, <http://www.who.int/malaria> 2016. **Upated**
690 **June 2018**.
- 691 73. WHO, *Supplies for monitoring insecticide resistance in disease vectors*. Geneva: World Health
692 Organization: Parasitic Diseases and Vector Control (PVC)/Communicable Disease Control,
693 Prevention and Eradication (CPE), 2001. **16**.
- 694 74. Service, M.W., *Mosquito ecology field sampling methods*. 1993, Barking, Essex, UK: Elsevier
695 Science Publishers.
- 696 75. Kreppel, K.S., et al., *Comparative evaluation of the Sticky-Resting-Box-Trap, the standardised*
697 *resting-bucket-trap and indoor aspiration for sampling malaria vectors*. *Parasites & vectors*,
698 2015. **8**(1): p. 1-5.
- 699 76. Gillies, M. and M. Coetzee, *A supplement to the Anophelinae of Africa south of the Sahara*
700 *(Afrotropical region)*. 1987.
- 701 77. Fanello, C., F.d. Santolamazza, and A. Della Torre, *Simultaneous identification of species and*
702 *molecular forms of the Anopheles gambiae complex by PCR-RFLP*. *Medical and veterinary*
703 *entomology*, 2002. **16**(4): p. 461-464.
- 704 78. Sanou, A., et al., *Evaluation of mosquito electrocuting traps as a safe alternative to the human*
705 *landing catch for measuring human exposure to malaria vectors in Burkina Faso*. *Malaria*
706 *Journal*, 2019. **18**(1): p. 386.
- 707 79. Wirtz, R., et al., *ELISA method for detecting Plasmodium falciparum circumsporozoite*
708 *antibody*. *Bulletin of the World Health Organization*, 1989. **67**(5): p. 535.
- 709 80. WHO, *Manual on Practical Entomology in Malaria. Part II. Methods and Techniques*. WHO
710 Division of Malaria and other Parasitic Diseases, 1975: p. 84-85.
- 711 81. Garrett-Jones, C., *The human blood index of malaria vectors in relation to epidemiological*
712 *assessment*. *Bulletin of the World Health Organization*, 1964. **30**(2): p. 241.
- 713 82. Beier, J.C., et al., *Bloodmeal identification by direct enzyme-linked immunosorbent assay*
714 *(ELISA), tested on Anopheles (Diptera: Culicidae) in Kenya*. *Journal of medical entomology*,
715 1988. **25**(1): p. 9-16.
- 716 83. Kiszewski, A., et al., *A global index representing the stability of malaria transmission*. *The*
717 *American Journal of Tropical Medicine and Hygiene*, 2004. **70**(5): p. 486-498.
- 718 84. Team, R.C., *R: A language and environment for statistical computing*. R Foundation for
719 Statistical Computing, Vienna, Austria. URL <https://www.R-project.org/>, 2018.

- 720 85. Wood, S. and M.S. Wood, *The mgcv package*. [www. r-project. org](http://www.r-project.org), 2007.
- 721 86. Bates, D., et al., *Fitting linear mixed-effects models using lme4*. arXiv preprint arXiv:1406.5823,
- 722 2014.
- 723