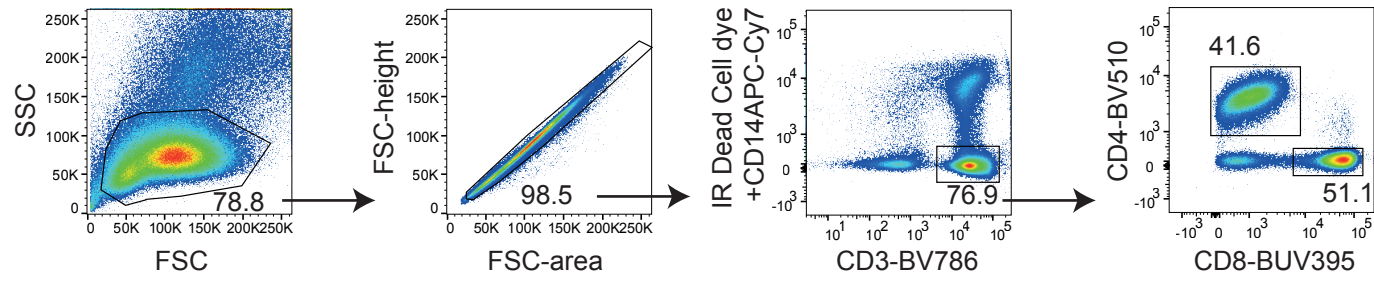


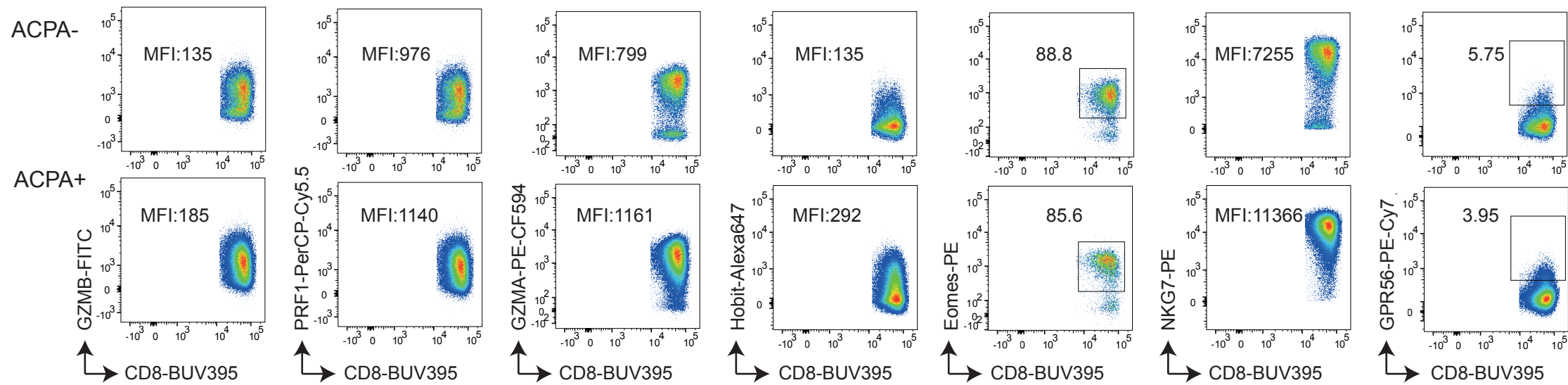
Supplementary Fig. 1



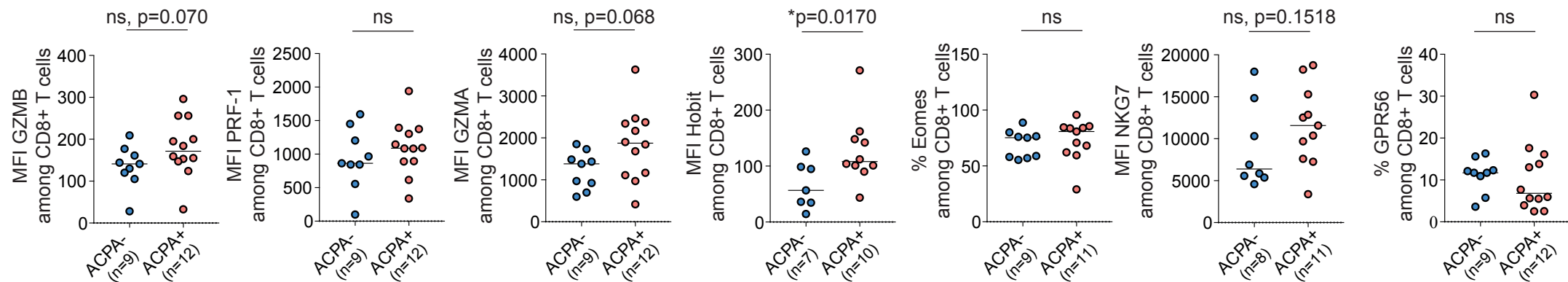
Supplementary Fig. 1. Facs gating strategy for Figure 1 included lymphocyte gating (based on forward and side scatter) followed by doublets, CD14+ and dead cells exclusion. CD4+ or CD8+ T cells were further selected among CD3+ T cells.

Supplementary Fig. 2

a



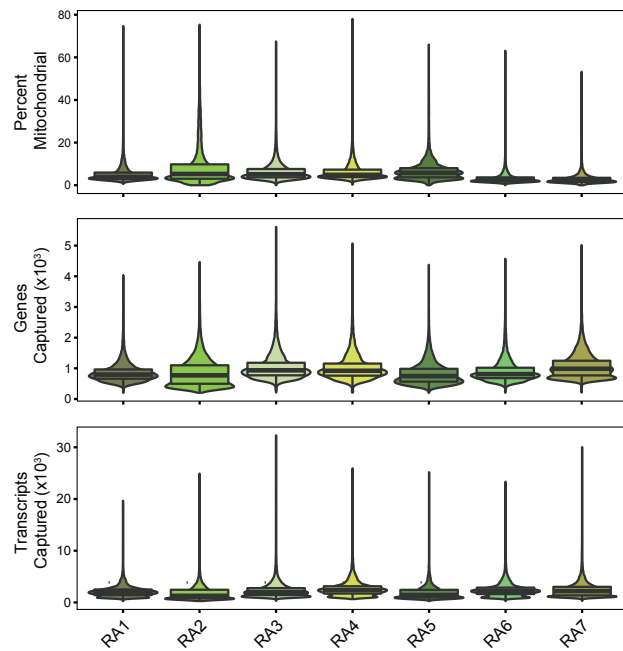
b



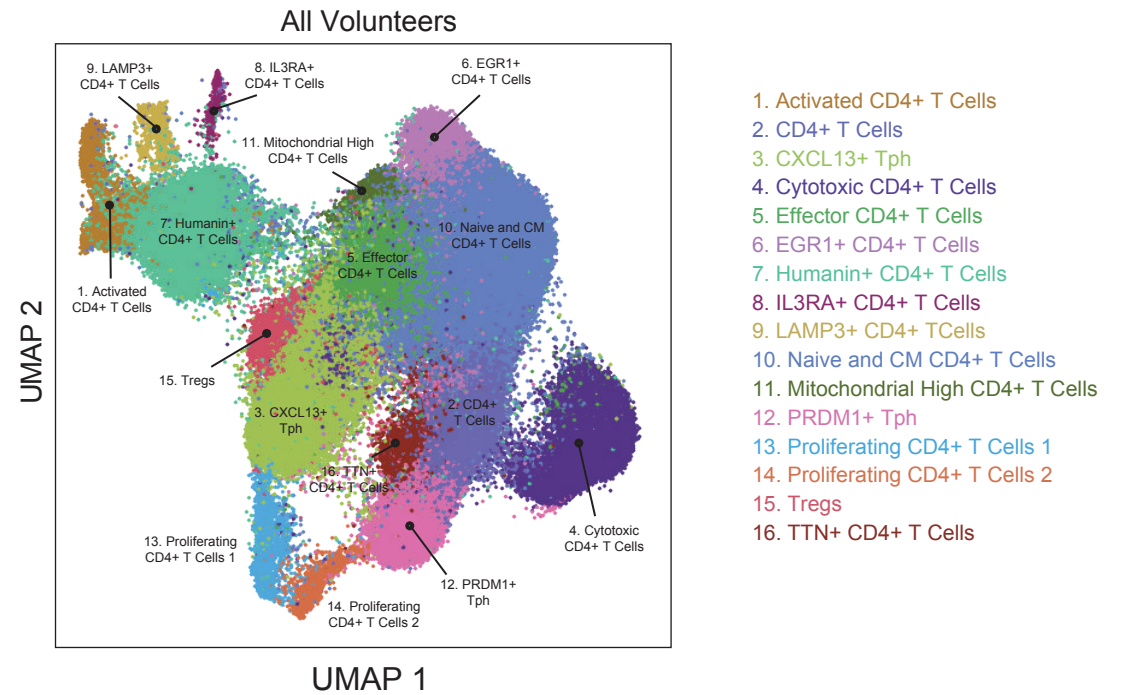
Supplementary Fig. 2. Cytotoxic markers in CD8+ T cells in SF of RA patients. a) Representative flow cytometry dot plot staining of effector molecules, receptors and transcription factors associated with cytotoxic functions in CD8+ T cells from synovial fluid (SF) from ACPA- (upper panel) and ACPA+ (lower panel) RA patients quantified in **b**), (ACPA-, n=7-9) (ACPA+, n=10-12). Line represents median, Mann-Whitney U test, ns: not significant. Data are from a pool of nine independent experiments where a circle is a single replicate. Blue dots indicate ACPA- RA SF and red dots indicate ACPA+ RA SF.

Supplementary Fig. 3

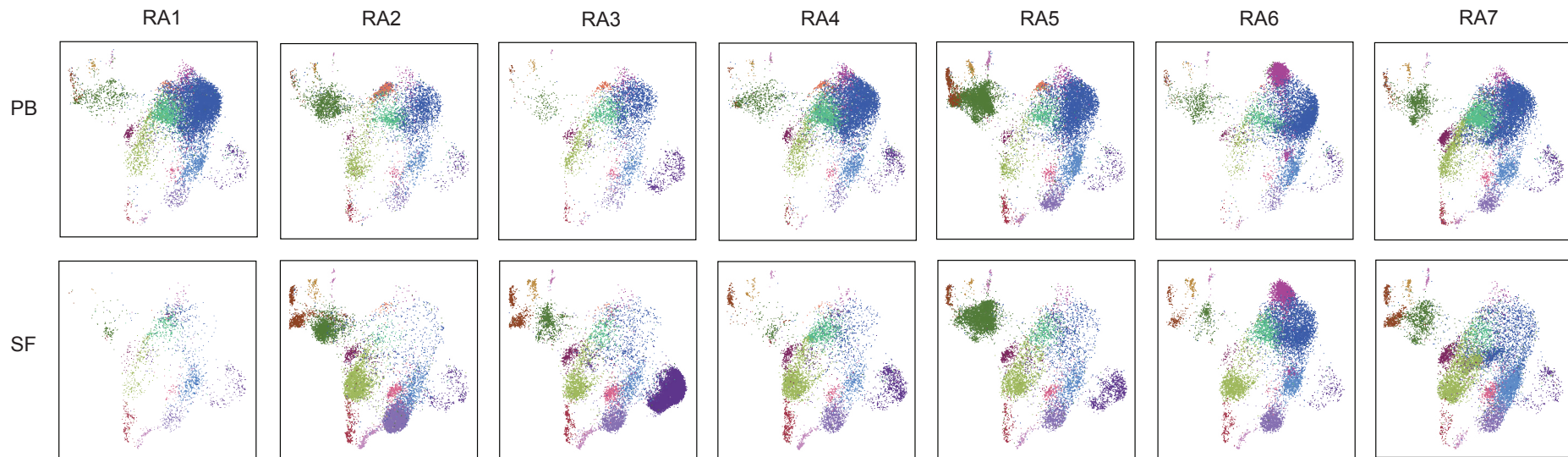
a



b



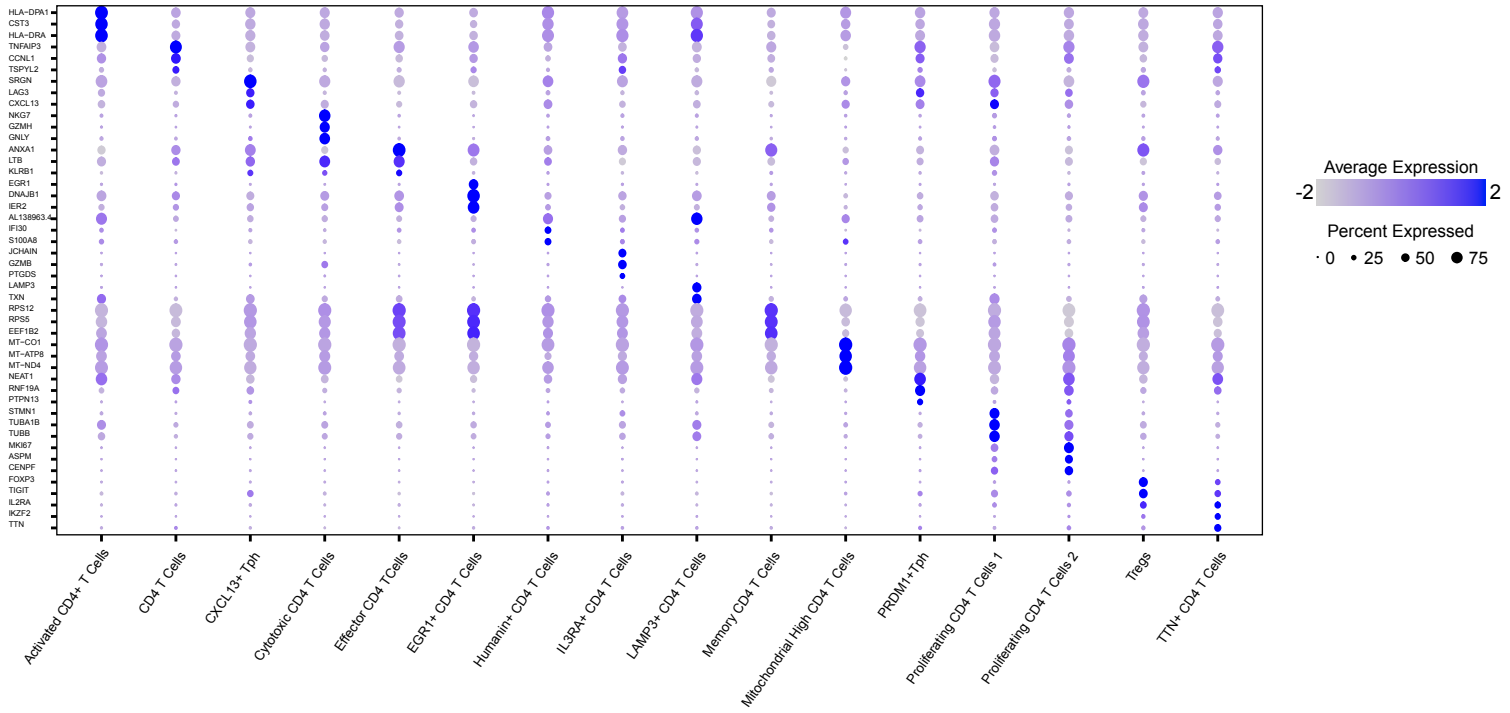
1. Activated CD4+ T Cells
2. CD4+ T Cells
3. CXCL13+ Tph
4. Cytotoxic CD4+ T Cells
5. Effector CD4+ T Cells
6. EGR1+ CD4+ T Cells
7. Humanin+ CD4+ T Cells
8. IL3RA+ CD4+ T Cells
9. LAMP3+ CD4+ T Cells
10. Naive and CM CD4+ T Cells
11. Mitochondrial High CD4+ T Cells
12. PRDM1+ Tph
13. Proliferating CD4+ T Cells 1
14. Proliferating CD4+ T Cells 2
15. Tregs
16. TTN+ CD4+ T Cells



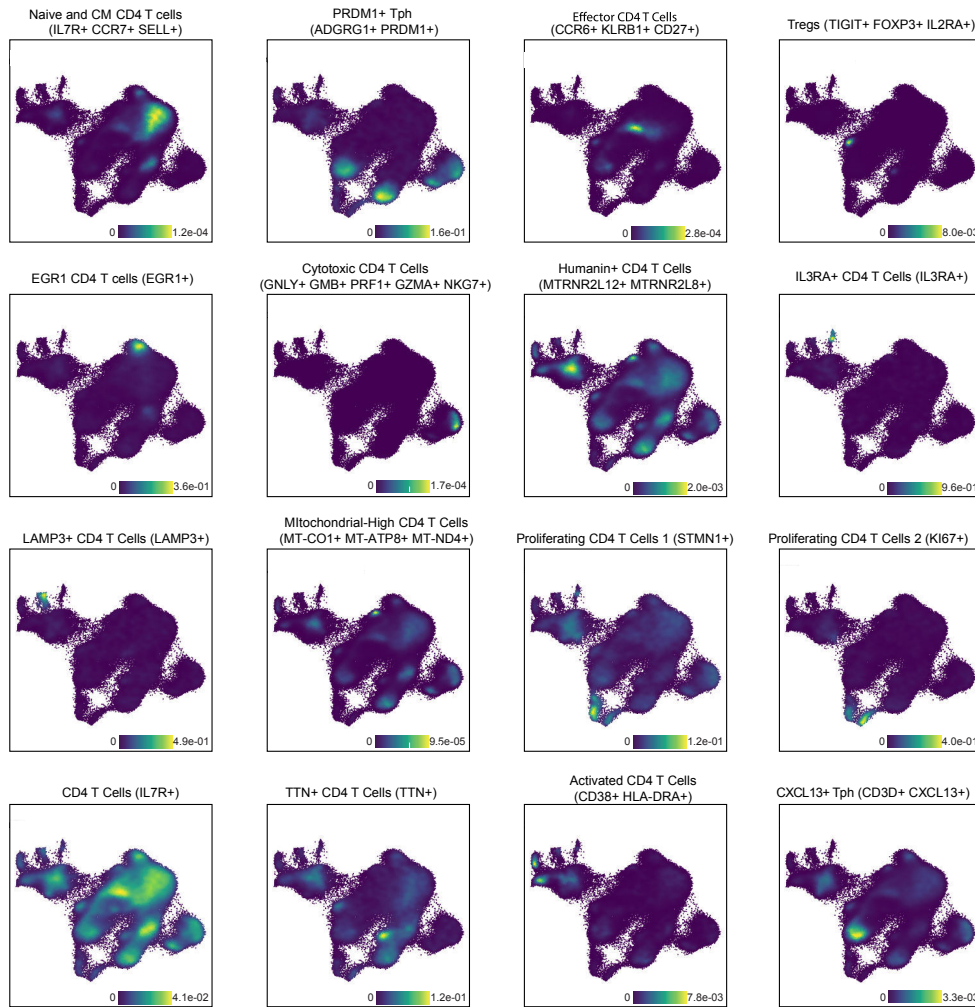
Supplementary Fig 3. Single cell RNA sequencing of CD4+ T cells from SF and PB of ACPA+ RA patients. a) Violin plots showing the frequency of mitochondrial genes (upper panel), the number of genes captured (middle panel) and the total number of transcripts (lower panel) per patient. b) UMAP plot of 135,733 cells colored by cell type cluster split by patients and compartments: PB-only (upper panel) and SF-only (lower panel).

Supplementary. Fig. 4

a



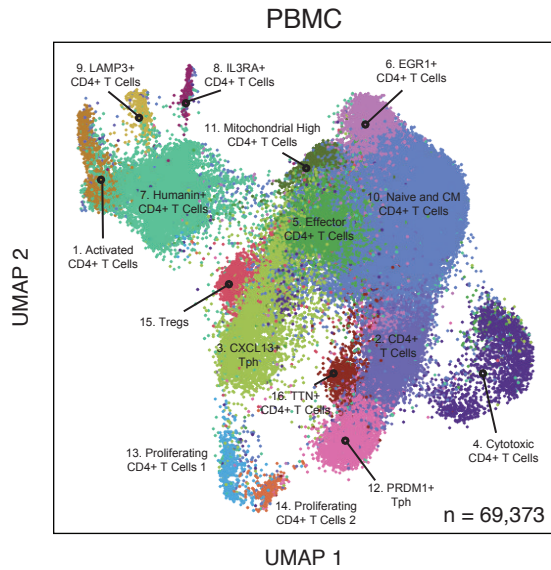
b



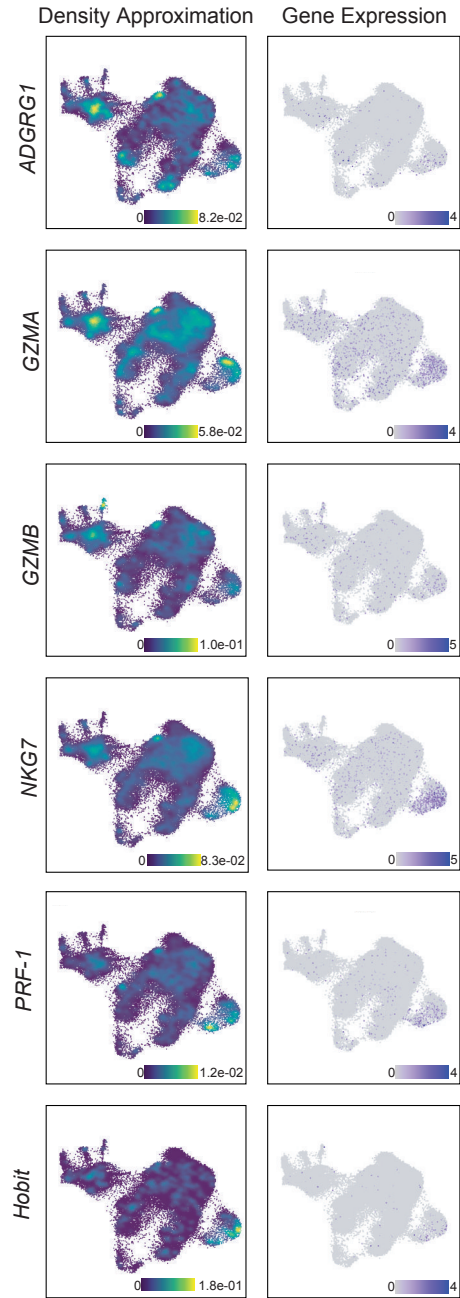
Supplementary Fig. 4. Differentially expressed (DE) genes in CD4+ T-cell clusters in combined PB and SF single cell data from 7 ACPA+ RA patients. a) 2-D dot plots showing the expression of the top 3 DE genes in each cluster (circle size indicates cell frequency, color intensity indicates average expression) b) Nebulosa density plots showing key genes used to annotate the clusters.

Supplementary Fig. 5

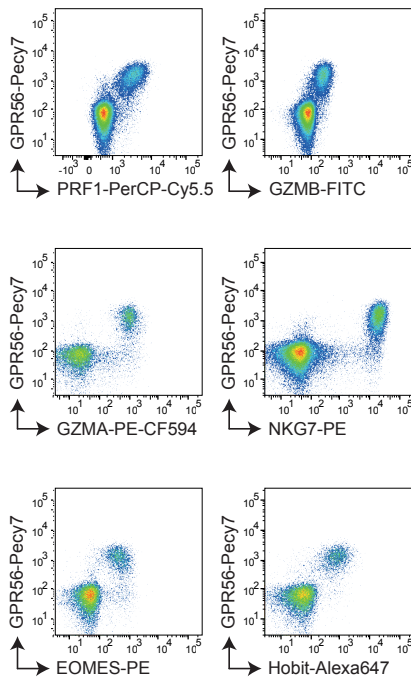
a



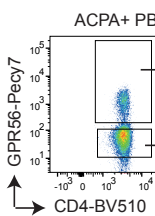
b



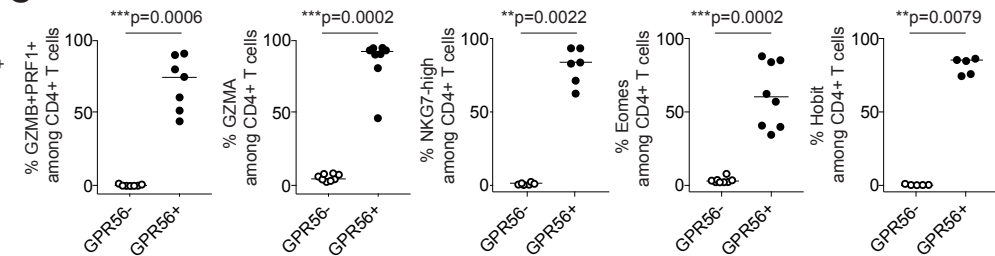
c



d



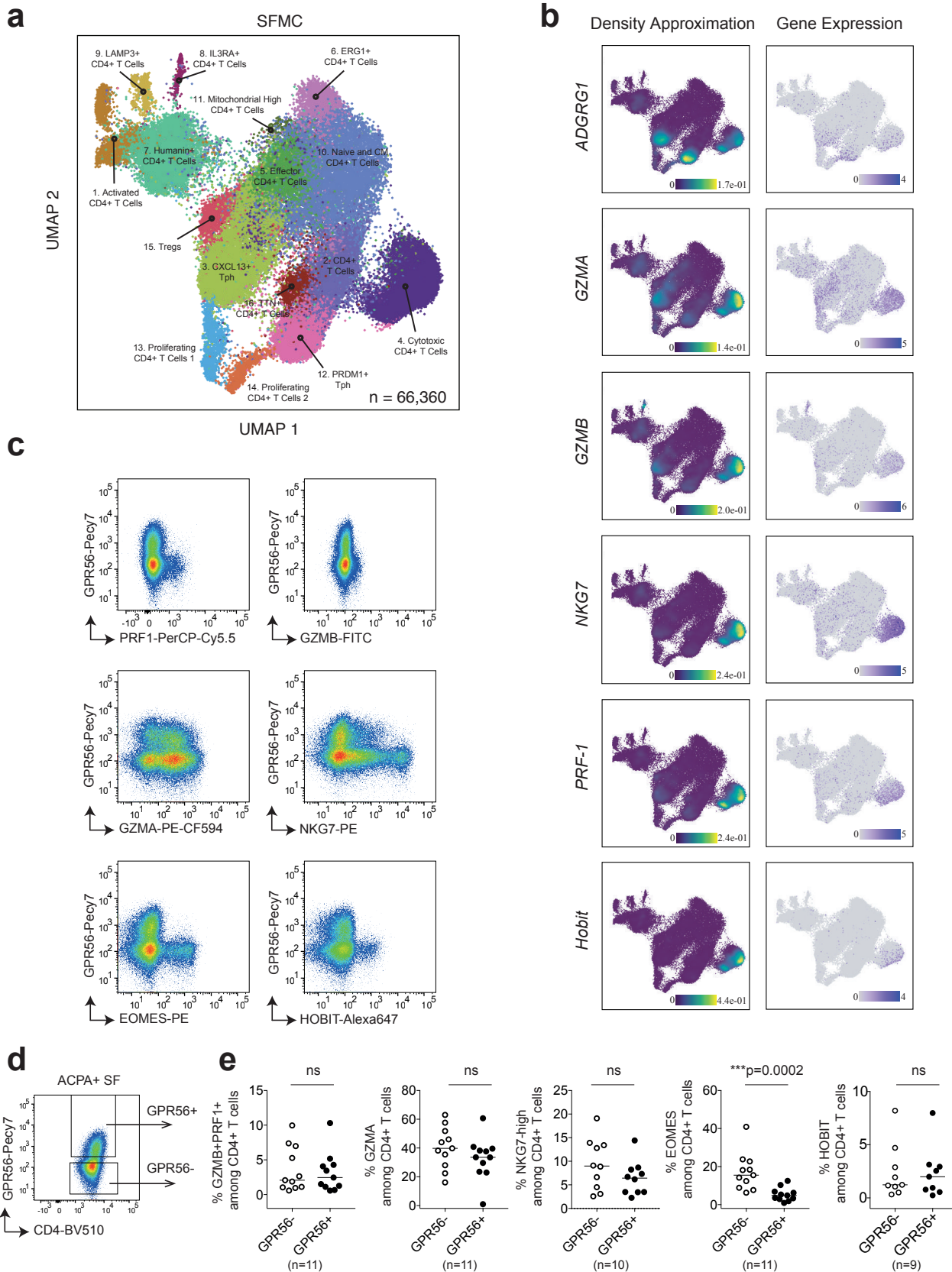
e



Supplementary Fig. 5. Cytotoxic CD4+ T cells and GPR56 expression in PB from ACPA+ RA patients.

a) UMAP displaying 16 CD4+ T-cell clusters in PB in 7 ACPA+ RA patients. **(b)** Nebulosa density plots showing cytotoxic effector molecules and transcription factors in PB from 7 ACPA+ RA patients. **(c)** Representative flow cytometry dot plots showing the expression of effector molecules, receptors and transcription factors associated with cytotoxic functions in CD4+ T cells in ACPA+ RA PB **(d-e)** Frequency of GZMB, GZMA, NKG7, Eomes and Hobit in GPR56-negative and positive CD4+ T cells in ACPA+ RA PB (n=5-8). Line represents median, Mann-Whitney U test. Data are from a pool of seven independent experiments where a circle is a single replicate. White dots indicate GPR56- CD4+ T cells and black dots indicate GPR56+ CD4+ T cells.

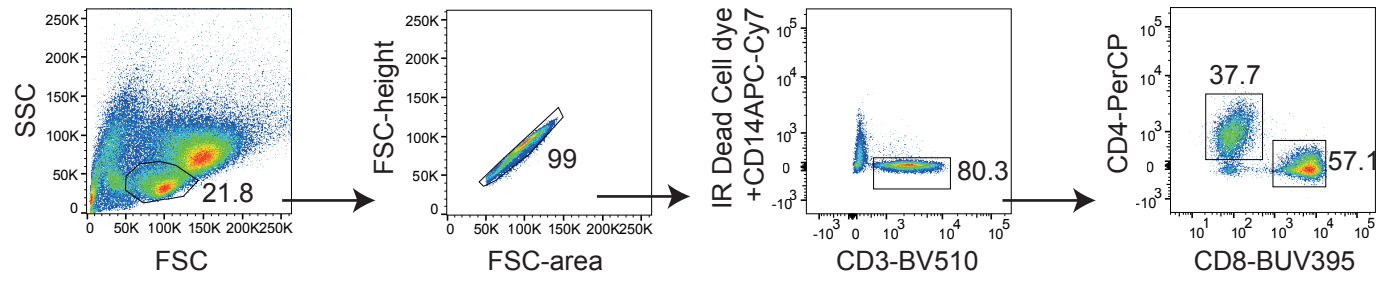
Supplementary Fig. 6



Supplementary Fig. 6. Cytotoxic CD4+ T cells and GPR56 expression in SF from ACPA+ RA patients.

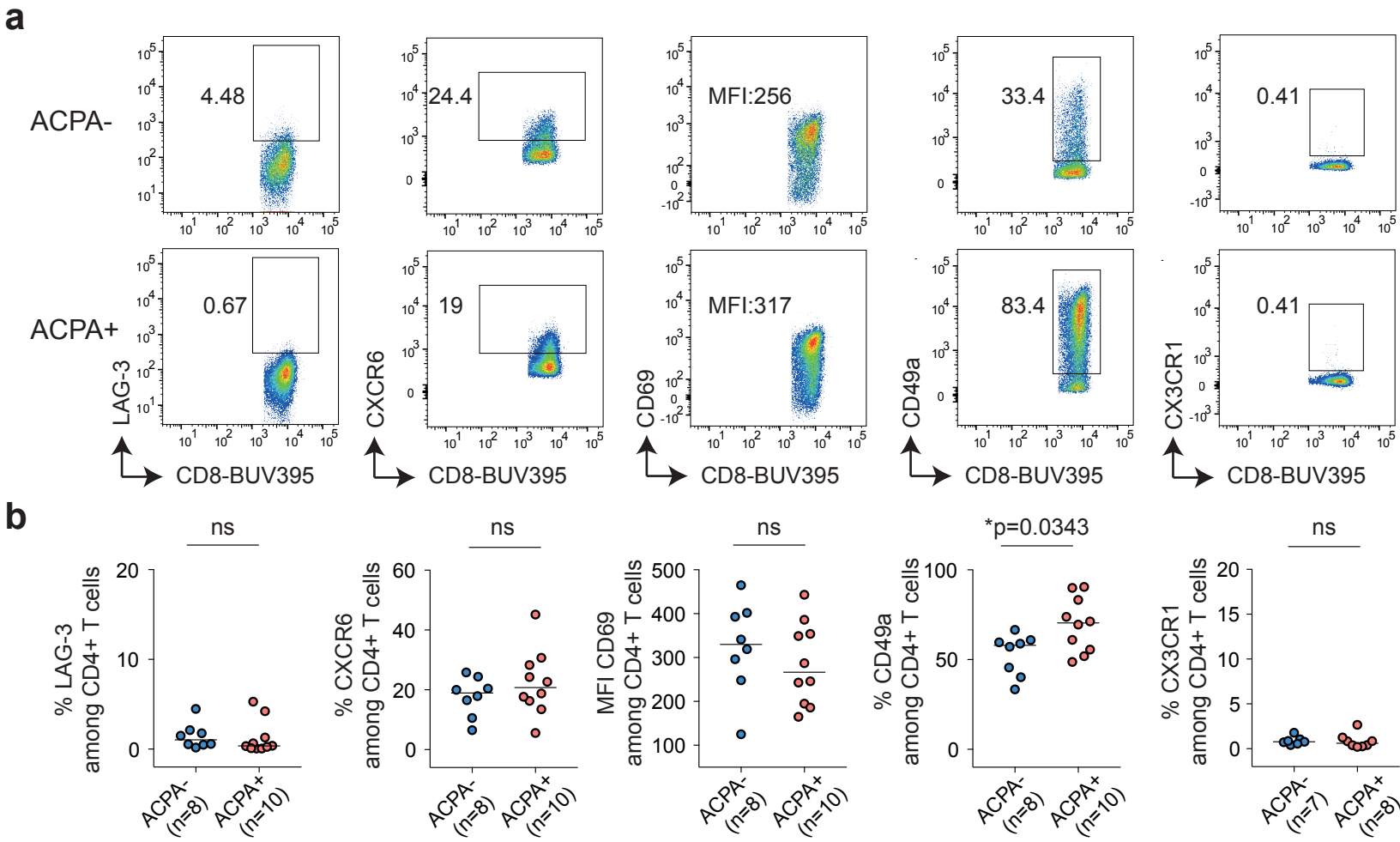
a UMAP displaying 16 CD4+ T-cell clusters in PB in 7 ACPA+ RA patients. **(b)** Nebulosa density plots showing cytotoxic effector molecules and transcription factors in SF from 7 ACPA+ RA patients. **(c)** Representative flow cytometry dot plots showing the expression of effector molecules, receptors and transcription factors associated with cytotoxic functions in CD4+ T cells in SF ACPA+ RA SF **(d-e)** Frequency of GZMB, GZMA, NKG7, Eomes and Hobit in GPR56-negative and positive CD4+ T cells in ACPA+ RA SF (n=9-11). Line represents median, Mann-Whitney U test. Data are from a pool of nine independent experiments where a circle is a single replicate. White dots indicate GPR56- CD4+ T cells and black dots indicate GPR56+ CD4+ T cells.

Supplementary Fig. 7



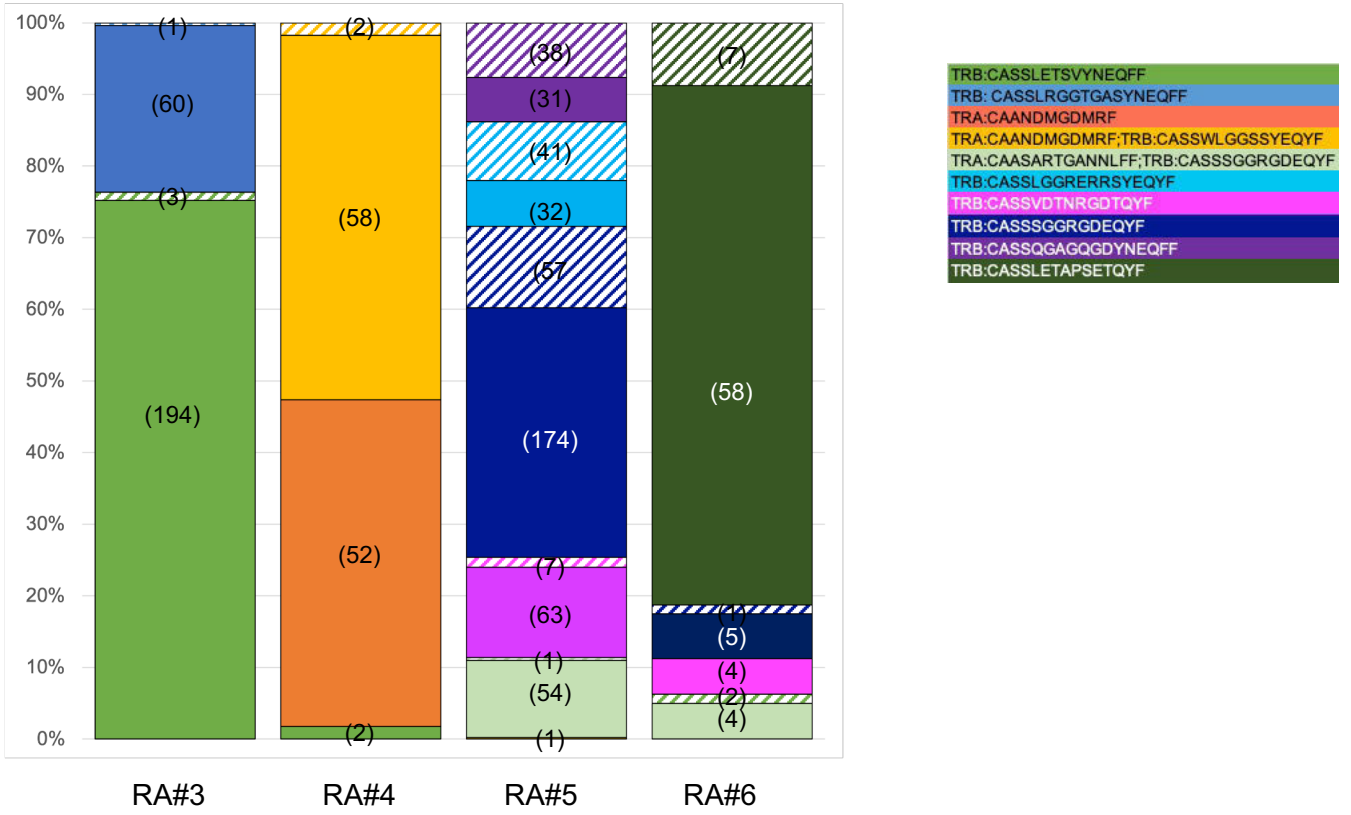
Supplementary Fig. 7. FACS gating strategy for Figure 4 and supp Fig 8 included lymphocyte gating (based on forward and side scatter) followed by doublets, CD14+ and dead cells exclusion. CD4+ or CD8+ T cells were further selected among CD3+ T cells.

Supplementary Fig. 8



Supplementary Fig. 8. Tissue-resident memory markers on CD8+ T cells in SF from RA patients. a) Representative flow cytometry dot plots showing the expression of LAG-3, CXCR6, CD69, CD49a and CX3CR1 in ACPA- and ACPA+ SF CD8+ T cells, quantified in (b) (ACPA- n=7-8; ACPA+ n=8-10). Line represents median, Mann-Whitney U test. Data are from a pool of eight independent experiments where a circle is a single replicate. Blue dots indicate ACPA- RA SF and red dots indicate ACPA+ RA SF.

Supplementary Fig. 9



Supplementary Fig 9. Top 10 expanded CD4⁺ T-cell clones. Stacked barplots displaying the frequency of the top 10 expanded CD4⁺ T-cell clones in ACPA+ RA patients. Striped quadrants clones are from PBMC, full quadrants clones are from SFMC. Each color represents a clone. Numbers in parenthesis indicate absolute numbers.

Supplementary Table 1. Patients characteristics

RA nr	Age ^a	Sex	anti-CCP titers*	RF	Disease duration	Methotrexate	Biologics	Corticosteroids (dose)	Other synthetic DMARDS	Shared Epitope	HLA-DRB1	10X single cell sequencing PB and SF	Flow cytometry SF	Flow cytometry PB
RA1	60-65	F	890	+	6	Y	N	N	N	N	*09/*09	Y	Y	
RA2	60-65	M	1620	+	21	N	abatacept (last infusion 4 months before)	Prednisolone 5mg	N	Y	*0101/*09	Y	Y	Y
RA3	50-55	F	1360	+	24	N	anti-CD20 (4 months before)	Prednisolone 10mg	N	N	*07/*15	Y	Y	
RA4	55-60	M	790	+	md	Y	N	N	N	md	md	Y	Y	Y
RA5	70-75	F	610	md	53	N (stopped 3 months before)	N (abatacept discontinued 3 months before)	N	N	Y	*09/*10	Y	Y	Y
RA6	35-40	F	1160	-	7	N (stopped 3 months before)	anti-TNF	Prednisolone 5mg	N	N	*07/*09	Y	Y	Y
RA7	60-65	F	160	+	43	N	N	Prednisolone 5mg	N	Y	*04/*15	Y	Y	
RA8	65-70	F	1780	-	14	Y	N	Prednisolone 2.5mg	N	Y	*01/*14		Y	Y
RA9	70-75	F	4200	+	29	N	abatacept (last infusion 2 weeks before)	N	N	Y	*03/*0401		Y	Y
RA10	60-65	F	1510	+	1	N	N	Prednisolone 10mg	N	Y	*01/*14		Y	
RA11	70-75	F	580	+	2	N (stopped 4 weeks before)	N	Prednisolone 10mg	N	N	*07/*13		Y	Y
RA12	45-50	F	210	+	25	Y	anti-TNF	N	N	Y	*03/*0404		Y	Y
RA13	35-40	F	neg	-	12	Y	N	N	Y	md	md		Y	Y
RA14	50-55	F	neg	-	22	Y	anti-TNF	N	N	Y	*01/*07		Y	
RA15	55-60	M	neg	-	6	N	N	Prednisolone 10mg (stopped 2 weeks before)	N	Y	*0404/*15		Y	Y
RA16	60-65	F	neg	-	23	Y	anti-TNF	Prednisolone 7.5mg	N	N	*0406/*11		Y	Y
RA17	45-50	F	neg	-	26	N	abatacept (last infusion 2 weeks before)	Prednisolone 5mg	N	Y	*0101/*08		Y	Y
RA18	60-65	F	neg	+	3	N	anti-IL-6R	Prednisolone 5mg	N	N	*03/*13		Y	Y
RA19	55-60	M	neg	-	29	Y	anti-interleukin-17A	Prednisolone 10mg	N	Y	*01/*03		Y	Y
RA20	45-50	M	neg	-	21	Y	N (anti-TNF stopped 4 months before)	No	N	Y	*01/*03		Y	Y
RA21	60-65	F	neg	-	4	N	anti-IL-6R	Prednisolone 5 mg	N	N	*11/*13		Y	Y

*cut-off for CCP = 25AU/ml
md: missing data
CCP: cyclic citrullinated peptide
RF: rheumatoid factor

Supplementary Table 2. Cell type composition (Frequencies)

PBMC

RA patients	RA1	RA2	RA3	RA4	RA5	RA6	RA7	Median
1. Activated CD4+ T Cells	0,62	0,63	0,61	0,42	5,43	0,48	0,96	0,62
2. CD4+ T Cells	6,76	6,25	8,35	6,50	7,21	7,39	6,72	6,76
3. CXCL13+ Tph	6,38	10,69	11,65	7,13	3,83	3,71	9,59	7,13
4. Cytotoxic CD4+ T Cells	2,00	2,82	10,72	3,75	1,95	1,78	2,38	2,38
5. Effector CD4+ T Cells	11,68	10,88	12,26	15,74	5,14	6,66	14,56	11,68
6. EGR1+ CD4+ T Cells	2,44	1,88	3,02	3,85	1,74	22,94	2,22	2,44
7. Humanin+ CD4+ T Cells	5,16	20,78	4,32	7,05	28,06	6,11	8,21	7,05
8. IL3RA+ CD4+ T Cells	0,20	0,21	0,17	0,24	0,92	0,29	0,17	0,21
9. LAMP3+ CD4+ T Cells	0,37	0,89	0,72	0,28	1,25	0,24	0,44	0,44
10. Naïve and CM CD4+ T Cells	58,83	27,92	35,84	48,62	34,16	46,49	44,08	44,08
11. Mitochondrial High CD4+ T Cells	0,68	9,85	2,68	1,52	1,47	0,15	0,13	1,47
12. PRDM1+ Tph	1,92	3,00	3,61	1,51	4,55	1,93	4,00	3,00
13. Proliferating CD4+ T Cells 1	0,32	1,55	1,31	0,46	1,47	0,20	1,07	1,07
14. Proliferating CD4+ T Cells 2	0,25	0,20	0,40	0,20	0,65	0,23	0,57	0,25
15. Tregs	1,65	1,22	2,41	1,93	0,93	0,89	3,63	1,65
16. TTN+ CD4+ T Cells	0,74	1,25	1,94	0,80	1,25	0,50	1,26	1,25

SFMC

RA patients	RA1	RA2	RA3	RA4	RA5	RA6	RA7	Median
1. Activated CD4+ T Cells	0,19	7,43	3,62	2,82	1,80	1,83	4,52	2,82
2. CD4+ T Cells	18,75	7,27	3,72	6,64	6,34	8,20	16,73	7,27
3. CXCL13+ Tph	13,25	21,36	8,40	27,61	15,27	13,13	23,50	15,27
4. Cytotoxic CD4+ T Cells	11,81	3,10	55,05	12,63	8,77	1,86	3,51	8,77
5. Effector CD4+ T Cells	14,60	1,51	2,45	11,42	5,40	8,76	5,01	5,40
6. EGR1+ CD4+ T Cells	2,27	0,51	0,48	1,00	1,09	16,58	1,18	1,09
7. Humanin+ CD4+ T Cells	4,87	18,40	4,97	3,39	34,72	2,89	9,09	4,97
8. IL3RA+ CD4+ T Cells	0,00	0,42	0,41	0,30	0,80	0,39	1,20	0,41
9. LAMP3+ CD4+ T Cells	0,14	1,04	1,05	1,02	0,51	1,25	0,83	1,02
10. Naïve and CM CD4+ T Cells	11,04	5,49	4,96	8,33	9,30	32,48	17,91	9,30
11. Mitochondrial High CD4+ T Cells	0,19	0,36	0,24	0,46	0,10	0,15	0,11	0,19
12. PRDM1+ Tph	8,39	22,72	7,00	11,07	7,30	8,69	6,97	8,39
13. Proliferating CD4+ T Cells 1	6,41	2,44	1,53	4,76	1,60	1,63	0,95	1,63
14. Proliferating CD4+ T Cells 2	3,23	2,30	1,42	2,45	1,07	0,82	0,73	1,42
15. Tregs	2,31	2,73	2,21	4,29	3,70	0,82	4,85	2,73
16. TTN+ CD4+ T Cells	2,55	2,92	2,48	1,78	2,24	0,52	2,89	2,48

Supplementary Table 3. Flow cytometry antibodies

Antibody	Fluorochrome	Clone	Source
CD14	APC-H7	MφP-9	BD Biosciences
CD3	BV786	UCHT1	BD Biosciences
CD3	BV510	UCHT-1	BD Biosciences
CD4	BV510	SK3	BD Biosciences
CD4	PerCP	RPA-T4	Biologend
CD8	BUV395	RPA-T8	BD Biosciences
PD-1	BV421	EH12.1	BD Biosciences
PD-1	BB515	EH12.1	BD Biosciences
HLA-DR	BV711	G46-6	BD Biosciences
GPR56	PE-Cy7	CG4	Biologend
CXCR6	Alexa Fluor 647	K041E5	Biologend
LAG3	BV421	11C3C65	Biologend
CD49a	PE	TS2/7	Biologend
CD69	BV786	FN50	BD Biosciences
CX3CR1	FITC	2A9-1	Biologend
GZMB	FITC	GB11	BD Biosciences
GZMA	Alexa Fluor 594	CB9	Biologend
PRF1	PercP/Cyanine5.5	B-D48	Biologend
Hobit	Alexa Fluor 647	Sanquin-Hobit/1	BD Biosciences
NKG7	PE	2G9	Beckman Coulter
Eomes	PE	WD1928	eBioscience

Supplementary Table 4. Flow cytometry panels

Panel 1	Fluorochrome	Clone	Source
Viability dye	Near infra-red	L34975	ThermoFischer Scientific
CD14	APC-H7	MφP-9	BD Biosciences
CD3	BV786	UCHT1	BD Biosciences
CD4	BV510	SK3	BD Biosciences
CD8	BUV395	RPA-T8	BD Biosciences
PD-1	BV421	EH12.1	BD Biosciences
HLA-DR	BV711	G46-6	BD Biosciences
GPR56	PE-Cy7	CG4	Biolegend
GZMA	Alexa Fluor 594	CB9	Biolegend
PRF1	PercP/Cyanine5.5	B-D48	Biolegend
Hobit	Alexa Fluor 647	Sanquin-Hobit/1	BD Biosciences
Eomes	PE	WD1928	eBioscience

Panel 2	Fluorochrome	Clone	Source
Viability dye	Near infra-red	L34975	ThermoFischer Scientific
CD14	APC-H7	MφP-9	BD Biosciences
CD3	BV786	UCHT1	BD Biosciences
CD4	BV510	SK3	BD Biosciences
CD8	BUV395	RPA-T8	BD Biosciences
PD-1	BV421	EH12.1	BD Biosciences
GPR56	PE-Cy7	CG4	Biolegend
GZMB	FITC	GB11	BD Biosciences
GZMA	Alexa Fluor 594	CB9	Biolegend
PRF1	PercP/Cyanine5.5	B-D48	Biolegend
Hobit	Alexa Fluor 647	Sanquin-Hobit/1	BD Biosciences
NKG7	PE	2G9	Beckman Coulter

Panel 3	Fluorochrome	Clone	Source
Viability dye	Near infra-red	L34975	ThermoFischer Scientific
CD14	APC-H7	MφP-9	BD Biosciences
CD3	BV510	UCHT-1	BD Biosciences
CD4	PerCP	RPA-T4	Biolegend
CD8	BUV395	RPA-T8	BD Biosciences
PD-1	BB515	EH12.1	BD Biosciences
HLA-DR	BV711	G46-6	BD Biosciences
GPR56	PE-Cy7	CG4	Biolegend
CXCR6	Alexa Fluor 647	K041E5	Biolegend
LAG3	BV421	11C3C65	Biolegend
CD49a	PE	TS2/7	Biolegend
CD69	BV786	FN50	BD Biosciences

Panel 4	Fluorochrome	Clone	Source
Viability dye	Near infra-red	L34975	ThermoFischer Scientific
CD14	APC-H7	MφP-9	BD Biosciences
CD3	BV786	UCHT1	BD Biosciences
CD4	BV510	SK3	BD Biosciences
CD8	BUV395	RPA-T8	BD Biosciences
PD-1	BV421	EH12.1	BD Biosciences
HLA-DR	BV711	G46-6	BD Biosciences
GPR56	PE-Cy7	CG4	Biolegend
CXCR6	Alexa Fluor 647	K041E5	Biolegend
CD49a	PE	TS2/7	Biolegend
CX3CR1	FITC	2A9-1	Biolegend