

Clinical validation of colorimetric RT-LAMP, a fast, highly sensitive and specific COVID-19 molecular diagnostic tool that is robust to detect SARS-CoV-2 variants of concern

Pedro A. Alves^{1,2*}, Ellen G. de Oliveira¹, Ana Paula M. Franco-Luiz¹, Letícia T. Almeida¹; Amanda B. Gonçalves¹, Iara A. Borges¹, Flávia de S. Rocha¹; Raissa P. Rocha², Matheus F. Bezerra³; Pâmella Miranda⁴; Flávio D. Capanema⁵; Henrique R. Martins^{6,7}; Gerald Weber⁴; Santuza M. R. Teixeira², Gabriel Luz Wallau⁸; Rubens L. do Monte-Neto^{1*}

¹Instituto René Rachou – Fundação Oswaldo Cruz, Belo Horizonte, 30190-009, Minas Gerais, Brasil;

²Centro de Tecnologia em Vacinas, Belo Horizonte, 31310-260, Minas Gerais, Brasil

³Departamento de Microbiologia, Instituto Aggeu Magalhães – Fundação Oswaldo Cruz, Recife, 50670-420, Pernambuco, Brasil

⁴Departamento de Física, Universidade Federal de Minas Gerais, Belo Horizonte, 31270-901, Minas Gerais, Brasil

⁵Núcleo de Inovação Tecnológica – Fundação Hospitalar do Estado de Minas Gerais, Belo Horizonte, 30150-260, Minas Gerais, Brasil

⁶Visuri Equipamentos e Serviços, Belo Horizonte, Minas Gerais, 31330-070, Minas Gerais Brasil

⁷Departamento de Engenharia Elétrica – Universidade Federal de Minas Gerais, Belo Horizonte, 31270-901, Minas Gerais, Brasil

⁸Departamento de Entomologia e Núcleo de Bioinformática, Instituto Aggeu Magalhães – Fundação Oswaldo Cruz, Recife, 50670-420, Pernambuco, Brasil

*Corresponding authors: rubens.monte@fiocruz.br; pedro.alves@fiocruz.br

Supplementary material

Table S1 – SARS-CoV-2-targeting primers showing their melting reference temperatures and coverages. Some N and E genes-targeting primers presented cross-reactivity with SARS-CoV genomes.

Primer ID	T _m (°C)	Coverage (%)		
		SARS-CoV-2	SARS-CoV	non-SARS-CoV
SARS-CoV-2 N Set1 B1c	69.2	98.0	-	-
SARS-CoV-2 N Set1 B2	60.6	99.7	-	-
SARS-CoV-2 N Set1 B3	62.5	99.6	-	-
SARS-CoV-2 N Set1 F1c	68.1	99.6	-	-
SARS-CoV-2 N Set1 F2	61.9	98.1	-	-
SARS-CoV-2 N Set1 F3	61.6	99.5	9	-
SARS-CoV-2 N Set1 LB	64.2	99.5	9	-
SARS-CoV-2 N Set1 LF	69.3	99.7	-	-
SARS-CoV-2 N Set2 B1c	70.1	99.8	-	-
SARS-CoV-2 N Set2 B2	62.9	99.6	-	-

SARS-CoV-2 N Set2 B3	64.6	99.3	-	-
SARS-CoV-2 N Set2 F1c	69.4	99.7	10	-
SARS-CoV-2 N Set2 F2	62.8	97.1	-	-
SARS-CoV-2 N Set2 F3	61.7	99.7	-	-
SARS-CoV-2 N Set2 LB	67.6	99.7	10	-
SARS-CoV-2 N Set2 LF	66.4	99.6	1	-
SARS-CoV-2 E Set1 B1c	62.5	99.6	9	-
SARS-CoV-2 E Set1 B2	59.7	98.7	-	-
SARS-CoV-2 E Set1 B3	59.5	99.7	10	-
SARS-CoV-2 E Set1 F1c	68.6	99.9	9	-
SARS-CoV-2 E Set1 F2	60.8	95.0	-	-
SARS-CoV-2 E Set1 F3	61.3	99.6	-	-
SARS-CoV-2 E Set1 LB	70.6	99.3	-	-
SARS-CoV-2 E Set1 LF	66.9	99.6	-	-
SARS-CoV-2 RdRp Set1 B1c	63.4	99.6	-	-
SARS-CoV-2 RdRp Set1 B2	64.6	99.5	-	-
SARS-CoV-2 RdRp Set1 B3	60.2	99.4	-	-
SARS-CoV-2 RdRp Set1 F1c	65.7	99.9	-	-
SARS-CoV-2 RdRp Set1 F2	56.6	99.9	-	-
SARS-CoV-2 RdRp Set1 F3	62.4	99.7	-	-
SARS-CoV-2 RdRp Set1 LB	63.8	99.3	-	-
SARS-CoV-2 RdRp Set1 LF	60.2	99.9	-	-

The RT-LAMP primer sets were aligned to 3364 SARS-CoV-2 genomes and 323 genomes belonging to other coronaviruses being 10 SARS-CoV-related and 313 non-SARS-CoV ones. Melting temperatures were calculated based on mesoscopic model considering up to three mismatches (1). FIP = F1c+F2; BIP = B1c+B2. N: SARS-CoV-2 Nucleocapsid protein coding sequence; E: SARS-CoV-2 Envelope protein coding sequence and RdRp: SARS-CoV-2 RNA-dependent RNA polymerase coding sequence

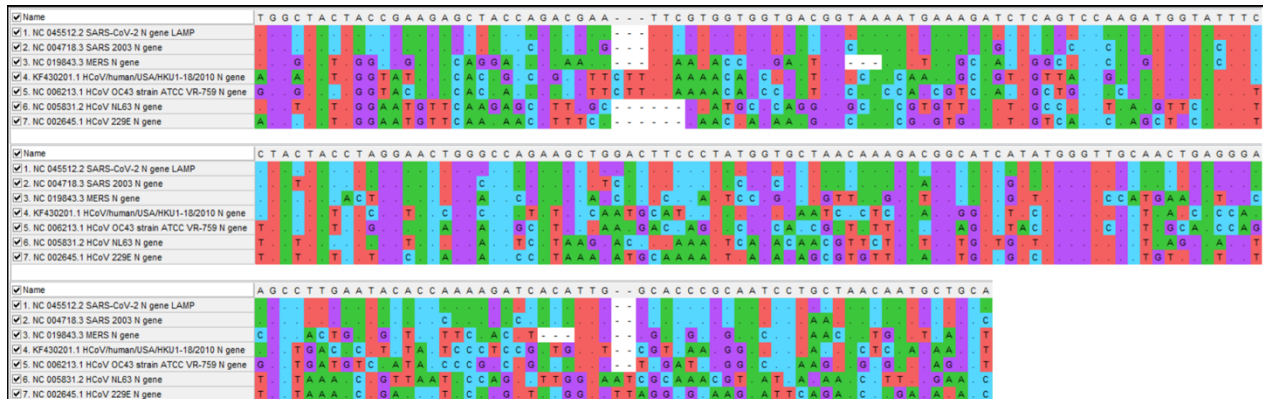


Figure S1 – Multiple sequence alignment of partial SARS-CoV-2 N gene compared to other human coronaviruses.

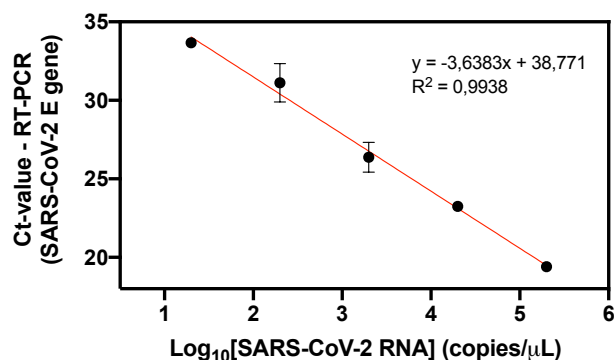


Figure S2 – Primer efficiency or calibration curve used for analytical sensitivity quantification. RT-qPCR was performed using SARS-CoV-2 E gene as target (Charité/Berlin protocol) using the SARS-CoV-2 E gene-harboring plasmid (2×10^5 copies/ μ L) (Biogene COVID-19 PCR, Bioclin/Quibasa #K228-1; Lot: 0007). Linear regression was used to calculate the limit of detection.

Table S2 – Comparative colorimetric RT-LAMP using two distinct set of primers targeting N gene on low viral load, nasopharyngeal RNA extracted samples.

RT-qPCR Ct value (E gene)	RT-qPCR Status	RT-LAMP - SARS-CoV-2		
		N gene_Set1	N gene_Set2	Multiplex N gene_Set1/Set2
31.85	Positive	Negative	ND	Positive
32.07	Positive	Positive	Positive	Positive
32.1	Positive	Negative	Positive	Positive
32.56	Positive	Negative	ND	Positive
32.59	Positive	Negative	Positive	Positive
32.98	Positive	Positive	Positive	Positive
33.18	Positive	Negative	ND	Negative
33.35	Positive	Negative	Positive	Positive
33.6	Positive	Negative	Positive	Positive
34.31	Positive	Positive	Positive	Positive
35.2	Positive	Negative	ND	Positive
36.19	Positive	Positive	Positive	Positive

Table S3 – Clinical SARS-CoV-2 sequenced samples isolated in Pernambuco State, Brazilian Northeast, depicting the lineage or variant identified.

Lineage/Variant	Isolated at (City, State)
P.1	Jaboatão dos Guararapes, Pernambuco
P.1	Recife, Pernambuco
P.2	Poção, Pernambuco
P.2	Recife, Pernambuco
B.1.1.374	Cabo de Santo Agostinho, Pernambuco
B.1.1	Recife, Pernambuco
B.1.1.28	Igarassu, Pernambuco
B.1.1.371	Recife, Pernambuco

SARS-CoV-2 RNA was reversely transcribed into cDNA and sequenced by NGS (Illumina) according to the previous work by (2). Variant of concern/interest monitoring are being currently monitored by Sanger sequencing of specific polymorphic regions, such as Spike-RBD coding portion (K417N/T, E484K, N501Y, A570D) (3). SARS-CoV-2 lineages and variants nomenclature follows the PANGO lineages proposal (<https://cov-lineages.org/>)(4). SARS-CoV-2 variant genomes were deposited on GISAID according to the following accession IDs: EPI_ISL_2221860, EPI_ISL_2221850, EPI_ISL_2221873, EPI_ISL_2221890, EPI_ISL_2221902, EPI_ISL_2221885, EPI_ISL_2221844, EPI_ISL_2221866

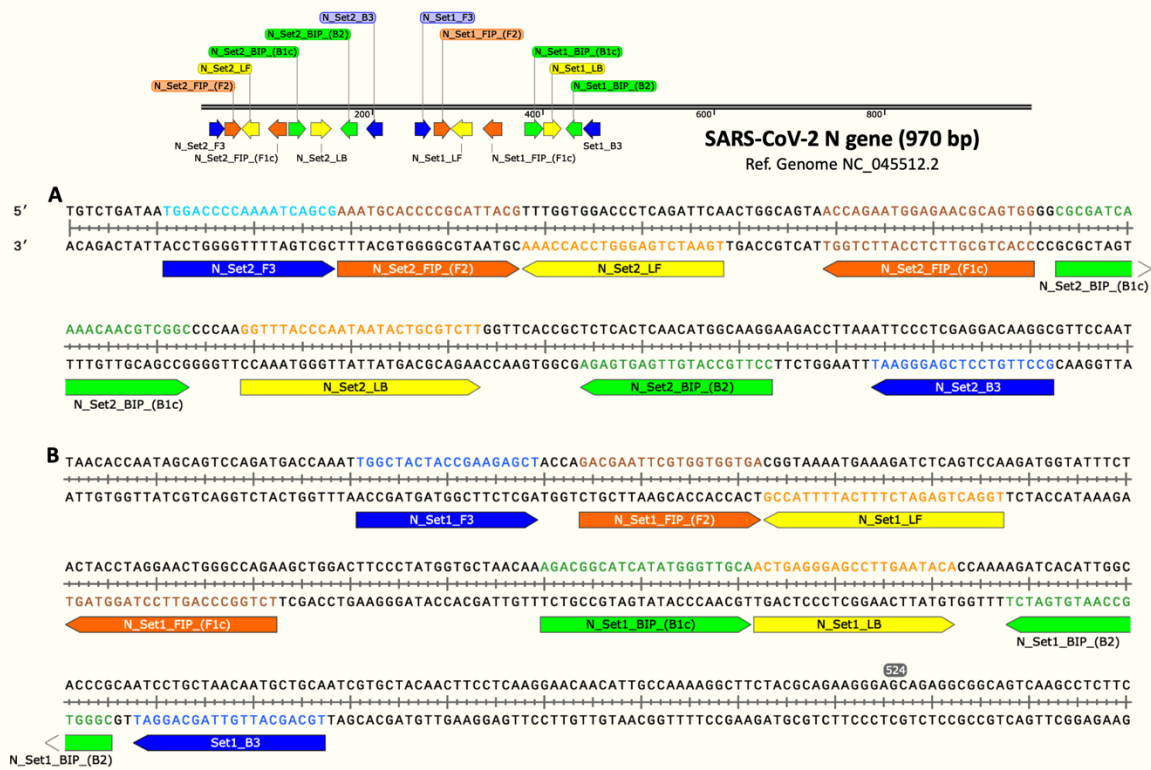


Figure S3 – SARS-CoV-2 specific N gene set of LAMP primers aligned to their respective target region for Set1 (A) and Set2 (B). The upper scheme represents the zoomed out region on SARS-CoV-2 reference genome NC_045512.2. Primers were designed using PrimerExplorer V5 or NEB LAMP primer designer softwares. F3/B3: outer primers; FIP/BIP: inner primers and LF/LB: loop primers. Created on SnapGene Viewer

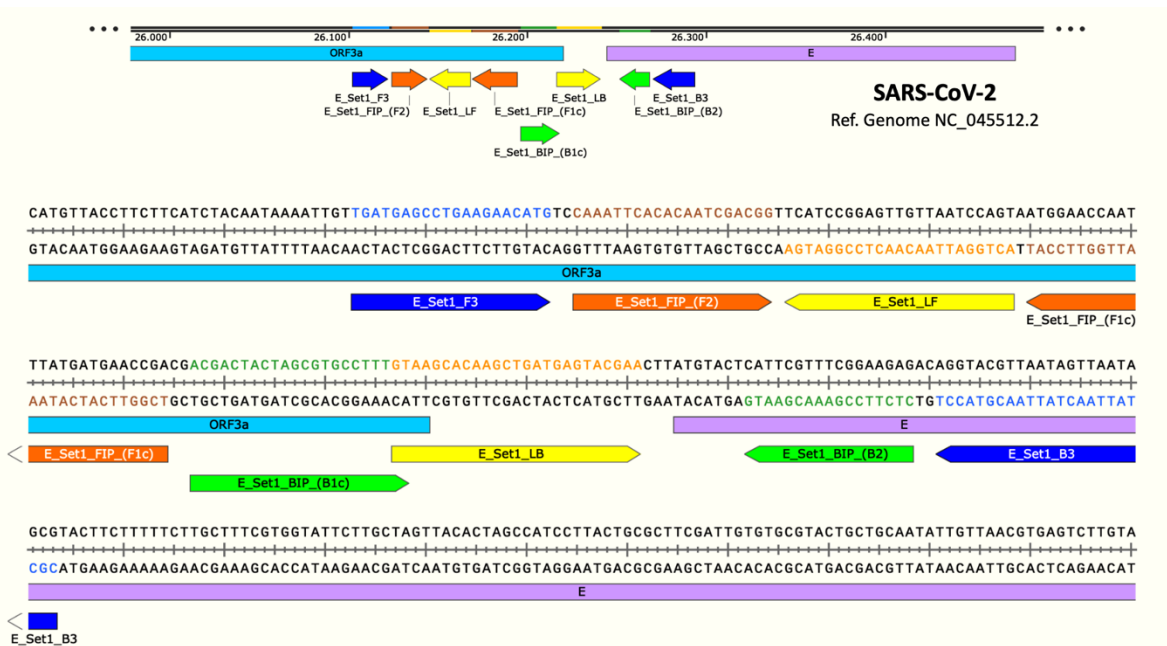


Figure S4 – SARS-CoV-2 E gene set of LAMP primers aligned to their respective target region, designed based on NC_045512.2 reference genome. F3/B3: outer primers; FIP/BIP: inner primers and LF/LB: loop primers. E: envelope protein-coding sequence. Created on SnapGene Viewer

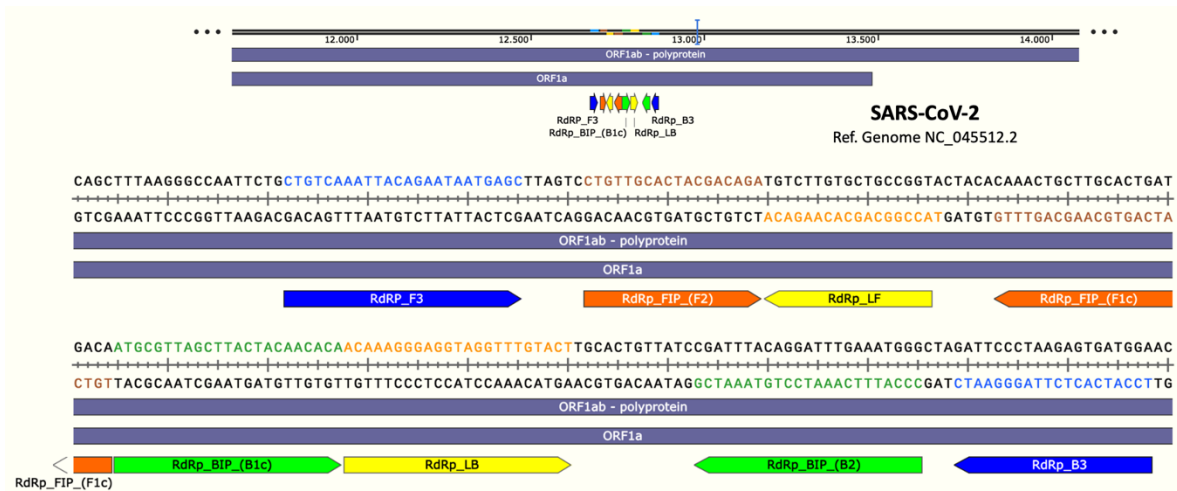


Figure S5 – SARS-CoV-2 RdRp gene set of LAMP primers aligned to their respective target region, designed based on NC_045512.2 reference genome. F3/B3: outer primers; FIP/BIP: inner primers and LF/LB: loop primers. RdRp: viral RNA-dependent RNA polymerase-coding sequence. Created on SnapGene Viewer

References

1. Miranda P, Weber G. 2021. Thermodynamic evaluation of the impact of DNA mismatches in PCR-type SARS-CoV-2 primers and probes. *Molecular and Cellular Probes* 56:101707.
2. Paiva MHS, Guedes DRD, Docena C, Bezerra MF, Dezordi FZ, Machado LC, Krovovsky L, Helvecio E, da Silva AF, Vasconcelos LRS, Rezende AM, da Silva SJR, Sales KG da S, de Sá BSLF, da Cruz DL, Cavalcanti CE, Neto A de M, da Silva CTA, Mendes RPG, da Silva MAL, Gräf T, Resende PC, Bello G, Barros M da S, do Nascimento WRC, Arcoverde RML, Bezerra LCA, Filho SPB, Ayres CFJ, Wallau GL. 2020. Multiple Introductions Followed by Ongoing Community Spread of SARS-CoV-2 at One of the Largest Metropolitan Areas of Northeast Brazil. *Viruses* 12.
3. Bezerra MF, Machado LC, Carvalho V do CV de, Docena C, Brandão-Filho SP, Ayres CFJ, Paiva MHS, Wallau GL. 2021. A Sanger-based approach for scaling up screening of SARS-CoV-2 variants of interest and concern. *medRxiv* 2021.03.20.21253956.
4. Rambaut A, Holmes EC, O'Toole Á, Hill V, McCrone JT, Ruis C, du Plessis L, Pybus OG. 2020. A dynamic nomenclature proposal for SARS-CoV-2 lineages to assist genomic epidemiology. 11. *Nature Microbiology* 5:1403–1407.