

Supplementary appendix

Supplement to de Figueiredo A, Larson HJ, and Reicher S. The potential impact of vaccine passports on inclination to accept COVID-19 vaccinations in the United Kingdom: evidence from a large cross-sectional survey and modelling study

Supplementary methods

Multilevel regression and poststratification to estimate $P_{Y,Z}(Y, Z)$ and establish socio-demographic determinants of $Y|Z$ and Z

We wish to estimate the joint distribution $P_{Y,Z}(Y, Z)$, where Y denotes change in vaccination inclination if vaccine passports were introduced for use domestically for social events (or, using the same notation but an independent model implementation, for international use) and Z denotes each individuals' baseline intent to accept a COVID-19 vaccine. Both Y and Z are modelled as ordinal random variables. We want to obtain the posterior predictive distribution $P_{Y',Z'|Y,Z}(Y', Z'|Y, Z) = \mathbb{E}_S P_{Y'|Y,Z,S}(Y'|Y, Z, S) P_{Z'|X}(Z'|S)$, where S is an index variable that represents one of the $N_S = 370,440$ unique census strata (12 regions \times 2 sexes \times 7 age groups \times 3 education levels \times 7 work statuses \times 7 religious affiliations \times 5 ethnicities \times 3 primary languages). Thus,

$$P_{Y',Z'}(Y', Z'|Y, Z) = \sum_{s=1}^{N_S} P_{Y'|Y,Z,S}(Y'|Y, Z, S = s) P_{Z'|X}(Z'|S = s) P_S(S = s). \quad (1)$$

The first two elements on the right-hand side of equation (1) are estimated via posterior predictive distributions,

$$P_{Y'|Y,Z,S}(Y'|Y, Z, S) = \int P_{Y|Z,S,\theta}(Y'|Z, S, \theta) P_{\theta|Z,S,Y}(\theta|Z, S, Y) d\theta \quad (2)$$

$$P_{Z'|Z,S}(Z'|Z, S) = \int P_{Z'|Z,S}(\tilde{Z}'|Z, S, \tilde{\theta}) P_{\tilde{\theta}|Z,S}(\tilde{\theta}|Z, Y) d\tilde{\theta} \quad (3)$$

obtained from two separate multilevel regressions, where both regression models deploy ordinal logistic regressions (see below) and where $P_{\theta|Z,S,Y}(\theta|Z, S, Y)$ and $P_{\tilde{\theta}|Z,S}(\tilde{\theta}|Z, Y)$ denote posterior distributions over all model parameters θ . The last term of equation (1) simply counts the number of unique strata in the UK census records and divides by the total number of individuals, $P_S(S = s) = \#(S = s)/N$. That is, this final term implements post-stratification according to UK census microdata records.

Multilevel ordinal logistic regression is used to model $Y|Z, S$,

$$Y_j(i)|Z_j(i), S_j(i) \sim \text{OrderedLogistic}(\beta_Z \sum_{i=1}^{Z_j(i)-1} \delta_{ij} + f(S_j(i); \boldsymbol{\beta}_j); \tau_1, \tau_2, \tau_3, \tau_4) \quad (5)$$

where $Y_j(i) \in \{1,2,3,4,5\}$ denotes the change in inclination for individual i in sub-national region j (where, as a reminder, 1=much less likely and 5=much more likely, see main text table 1); $S_j(i)$ denotes individuals' socio-demographic characteristics; the term $\beta_Z \sum_{i=1}^{Z_j(i)-1} \delta_{ij}$ models that $Z_j(i) \in \{1,2,3,4\}$ is an ordinal covariate⁴¹; and where $\delta_{ij} \geq 0$ and $\sum_{i=1}^4 \delta_{ij} = 1 \forall j$, $-\infty < \tau_1 < \tau_2 < \tau_3 < \tau_4 < \infty$. We use the ordered logistic distribution for k ordered outcomes specified by $Y \sim \text{OrderedLogistic}(\beta; \tau_1, \tau_2, \dots, \tau_{k-1})$, where $P_Y(Y \leq k) = \sigma(\tau_k - \beta)$ and $\sigma(x) = 1/(1 + e^{-x})$ is the standard logistic sigmoid function. This definition is equivalent to the proportional-odds assumption, wherein the difference in the log of cumulative odds ratios between successive categories is independent of the slope β . The function $f(S_j(i); \boldsymbol{\beta}_j) = \beta_{sex(i),j} + \beta_{age(i),j} + \beta_{edu(i),j} + \beta_{rel(i),j} + \beta_{wrk(i),j} + \beta_{eth(i),j} + \beta_{lan(i),j}$, where $\forall d \in D = \{sex, age, edu, rel, wrk, eth, lan\}$, $d(i)$ corresponds to the category to which i belongs and $\beta_{d(i)} = 0$ if $d(i)$ is a baseline group (male, aged 18-24, with level 1-3 education, a Christian, in full-time employment, White ethnicity, and speaks English/Welsh/Scottish as a first language—see main text table 1 for full definitions).

Regularising priors are placed on all socio-demographic fixed-effect parameters $\beta_{k,j} \sim N(\gamma_k, p_k)$ (where $p_k = \frac{1}{\sigma_k^2}$ is the precision) and $p_k \sim \text{Gamma}(1, .1)$ places a relatively uniform prior over corresponding values for $\sigma_i > 1$, with less prior mass assigned as σ_i decreases from 1 towards 0. (Here k indexes over all random-effect parameters d .) $\gamma_k \sim N(0, 10^{-1}) \forall k$, which places a semi-informative prior over fixed-effect parameters with variance equal to 10.

In addition, the second term in equation (1) is modelled as,

$$Z_j(i)|S_j(i) \sim \text{OrderedLogistic}(f(S_j(i); \boldsymbol{\beta}'_j); \tau'_1, \tau'_2, \tau'_3, \tau'_4), \quad (6)$$

with the same conditions on the τ parameters in the ordered logistic function as specified above and with $f(S_j(i); \boldsymbol{\beta}'_j) = \beta'_{sex(i),j} + \beta'_{age(i),j} + \beta'_{edu(i),j} + \beta'_{rel(i),j} + \beta'_{wrk(i),j} + \beta'_{eth(i),j} + \beta'_{lan(i),j}$. This multilevel ordinal logistic regression

estimates the relationship between socio-demographic factors and baseline intent to accept a COVID-19 vaccine. The prime notation distinguishes the parameters from those in equation (5). The same prior distributions are used as for the fixed- and random-effect parameters for equation (5).

We also estimate the determinants of change in vaccination inclination directly (that is, without controlling for baseline vaccination intent) via,

$$Y_j(i) | S_j(i) \sim \text{OrderedLogistic}(f(S_j(i); \boldsymbol{\beta}''_j); \tau''_1, \tau''_2, \tau''_3, \tau''_4), \quad (7)$$

where all parameters and respective priors are as defined above, but the double primed notation differentiates parameters between models.

Multilevel regression and poststratification to estimate responses to the seven-item battery on vaccinations and societal freedoms

Multilevel regression and poststratification is also used to estimate national-level sentiment and the socio-demographic determinants of the seven questions outlined in the main text. Seven individual MRP models are implemented to simultaneously estimate national attitudes to these statements and to explore their socio-demographic determinants. These models follow the same process as per equation (1), but instead we estimate $P_{Z_q}(Z'_q | Z_q)$, where Z_q denotes the response to one of the seven statements: (1) Proof of vaccination via a vaccine certificate or passport for social events infringes on personal liberties; (2) I wish to be free to reject a vaccine without consequences on my ability to attend public or social events; (3) Individuals who reject a vaccine should not be allowed to attend social events; (4) Private companies should have the right to reject individuals if they have not received a vaccine; (5) Private companies should have the right not to employ unvaccinated staff; (6) Overall, I think vaccine passports are a good idea; (7) Requiring vaccine certificates or passports for social events is the same as requiring me to get vaccinated.

Estimating age-stratified intention to accept a COVID-19 vaccine using data from October 2020

In October 2020, a nationally representative survey of 16,820 UK adults conducted in October 2020 asked respondents 'If a new coronavirus (COVID-19) vaccine became available, would you accept the vaccine for yourself?' with the same four possible responses as provided in this study (that is, 'yes, definitely', 'unsure, but leaning towards yes', 'unsure, but leaning towards no', and 'no, definitely not'). These data are used in the main text discussion to assess whether age-specific intent recorded in October 2020 matched uptake among individuals over 55, to thus establish whether a possible key limitation of the study—social desirability biases—may play a strong limiting factor in our analysis.

Intent to accept a COVID-19 vaccine in October 2020 in the UK is estimated for each of three birth cohorts who have all been offered a COVID-19 vaccine at the time of the study. These birth cohorts are: 55-64 (n=2,059), 65-79 (n=2,623), and 80+ year-olds (n=157). Uptake intent (as measured in October 2020) is estimated using the model, $Y_c \sim \text{Multinom}(\boldsymbol{\pi}_c, n_c)$, with $\boldsymbol{\pi}_c \sim \text{Dirichlet}(1,1,1,1)$, where $Y = (Y_1, Y_2, Y_3, Y_4)$ is the number of respondents falling into each of the four categories (1 = 'No, definitely not', 2='Unsure, but leaning towards no', 3='Unsure, but leaning towards yes', 4='Yes, definitely').

Supplementary figures and tables

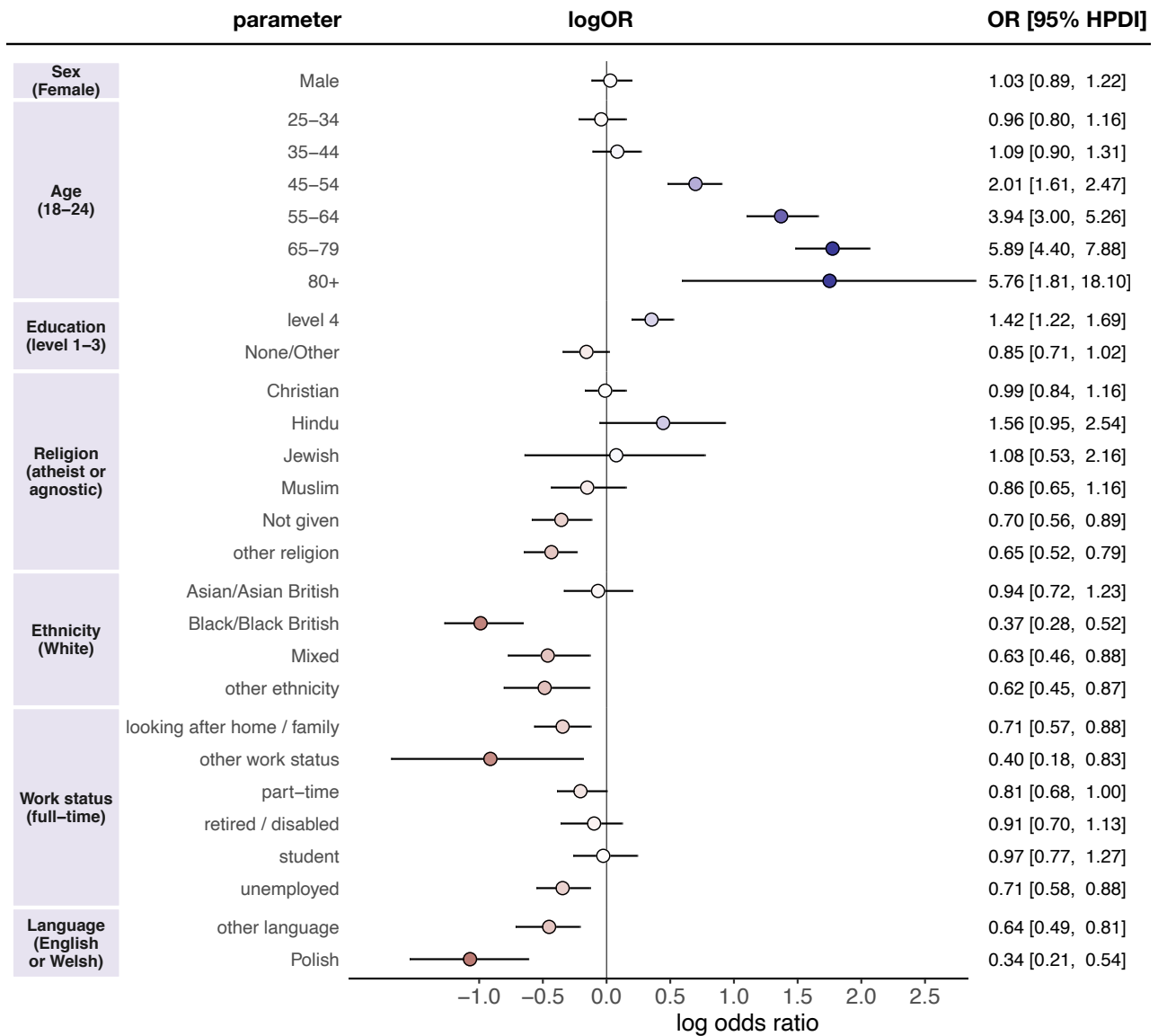


Figure 1 | Socio-demographic determinants of baseline vaccination intent, z . Multilevel regression fixed-effect parameter log odds ratios are plotted with corresponding 95% highest posterior density intervals. Log odds ratios are coloured by effect magnitude and direction, where blues (reds) signify that the group is more (less) inclined than the baseline group to accept a COVID-19 vaccine and the darker the colour the stronger the association. For each factor, the baseline group is provided in parentheses on the left. Odds ratios with 95% HPDIs are shown on the right for each parameter.

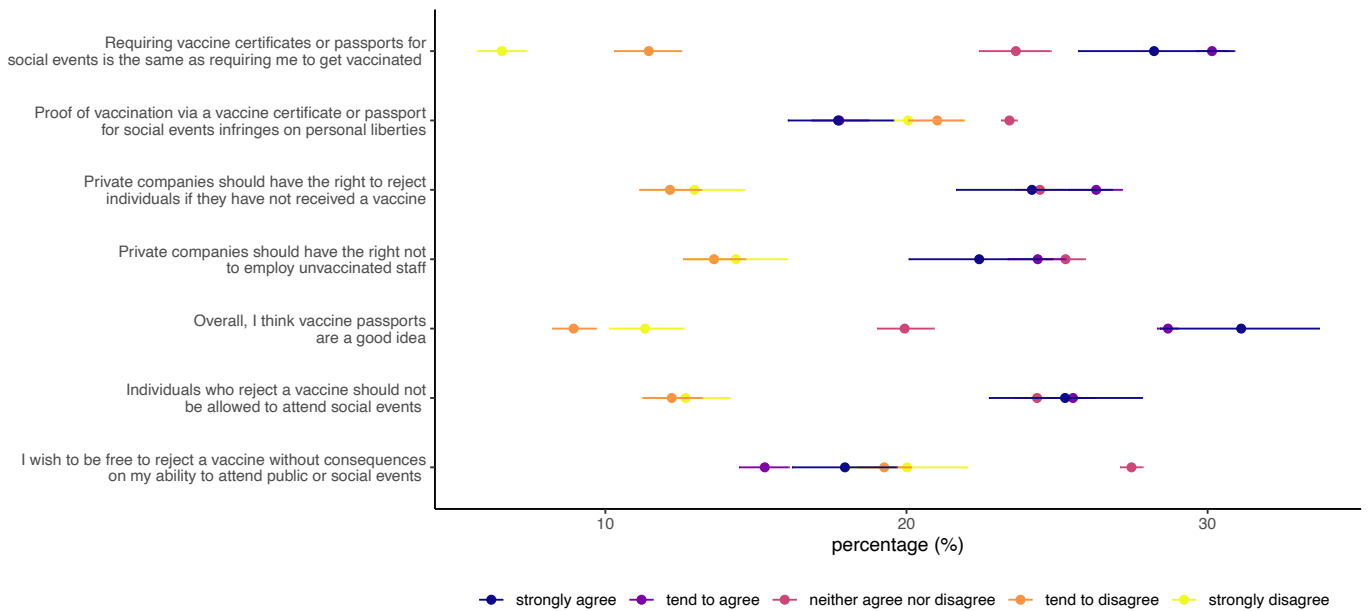


Figure 2 | MRP estimates of seven-item battery on attitudes to vaccinations, passports, and societal freedoms
 Percentage of the UK population who have not yet received both doses who agree to seven statements on vaccinations, passports, and societal freedoms. Horizontal bars denote 95% highest posterior density intervals. Overall agreement (disagreement)—that is the sum of ‘strongly agree’ (‘strongly disagree’) and ‘tend to agree’ (‘tend to disagree’)—to the seven statements is as follows: Requiring vaccine certificates or passports for social events is the same as requiring me to get vaccinated (agree: 35.5% [32.9 to 38.3]; disagree: 41.1% [38.2 to 43.8]); I wish to be free to reject a vaccine without consequences on my ability to attend public or social events (agree: 33.2% [30.7 to 35.8]; disagree: 39.3% [36.6 to 42.1]); Individuals who reject a vaccine should not be allowed to attend social events (agree: 50.8% [47.4 to 54.0]; disagree: 24.9% [22.4 to 27.3]); Private companies should have the right to reject individuals if they have not received a vaccine (agree: 50.5% [47.0 to 53.9]; disagree: 25.1% [22.6 to 27.8]); Private companies should have the right not to employ unvaccinated staff (agree: 46.8% [43.5 to 50.11]; disagree: 27.9% [25.3 to 30.7]); Overall, I think vaccine passports are a good idea (agree: 59.8% [56.8 to 62.6]; disagree: 20.3% [18.3 to 22.3]); Requiring vaccine certificates or passports for social events is the same as requiring me to get vaccinated (agree 58.4% [55.3 to 61.6]; disagree 18.0% [16.0 to 19.9]).

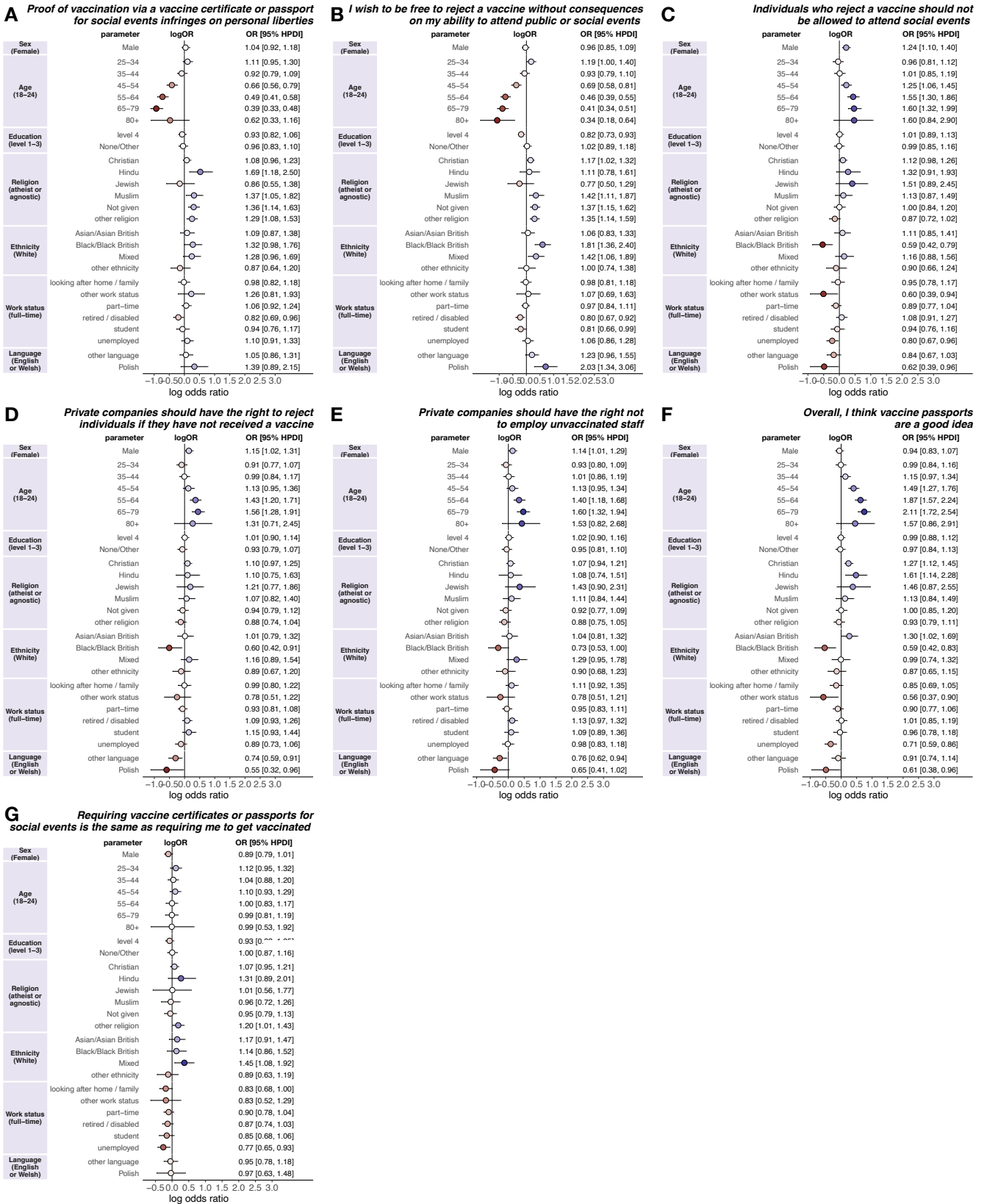


Figure 3 | Socio-demographic determinants of the seven-item battery on attitudes to vaccinations, passports, and societal freedoms Multilevel regression fixed-effect parameter log odds ratios are plotted with corresponding 95% highest posterior density intervals. Log odds ratios are coloured by effect magnitude and direction, where blues (reds) signify that the group is more (less) inclined than the baseline group to accept a COVID-19 vaccine and the darker the colour the stronger the association. For each factor, the baseline group is provided in parentheses on the left. Odds ratios with 95% HPDIs are shown on the right for each parameter.

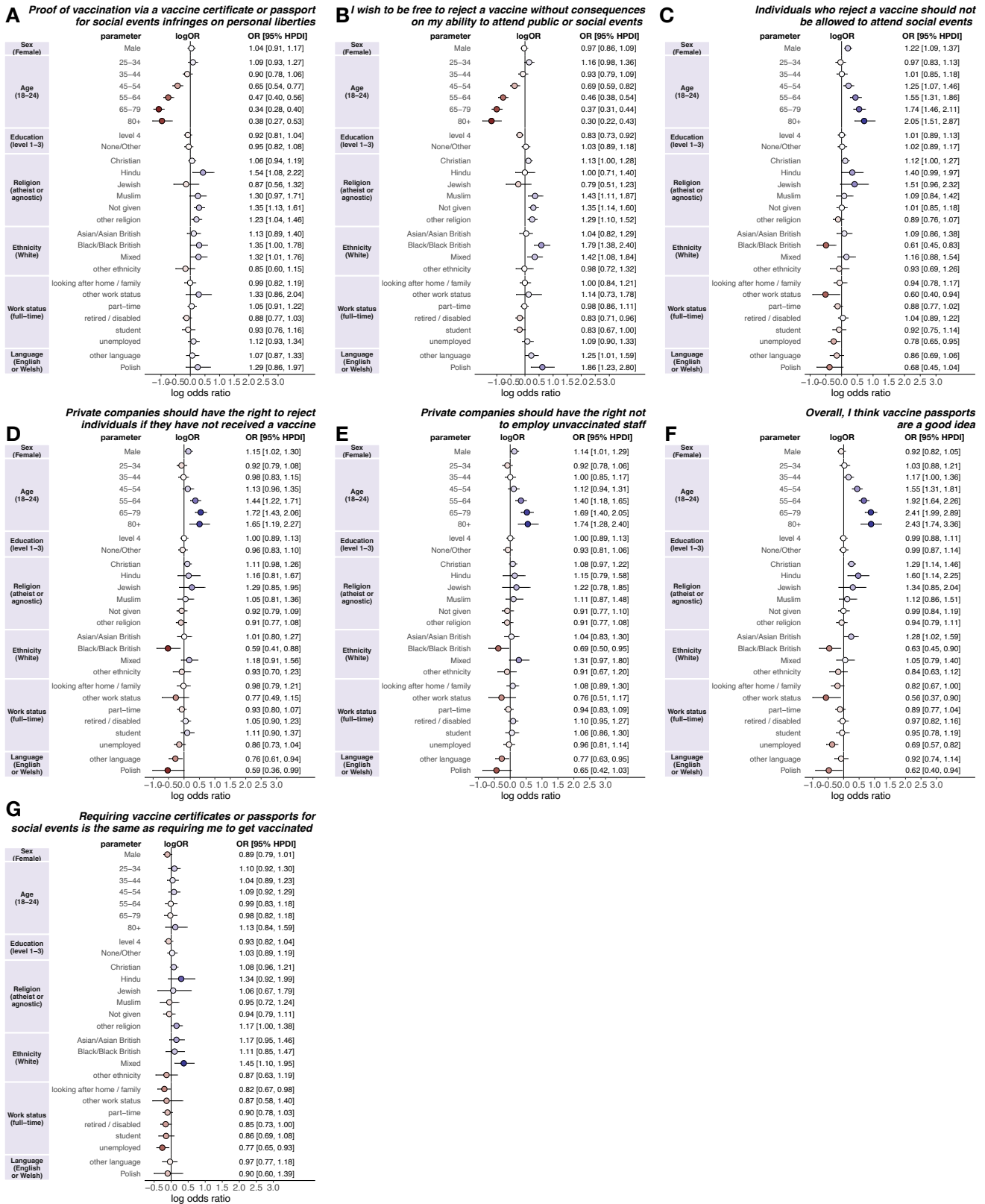


Figure 4 | Socio-demographic determinants of the seven-item battery on attitudes to vaccinations, passports, and societal freedoms (sensitivity analysis) Figures are as described in appendix, figure 3. All individuals are included in these regressions, but individuals who were previously removed for stating that they ‘prefer not to say’ (appendix, figure 3) are instead recoded to ‘neither agree nor disagree’. The results are quantitatively similar.

		If a coronavirus (COVID-19) vaccine was required to attend social events in the UK (such as sports events, theatres, pubs, or restaurants), would you be more or less inclined to accept a coronavirus (COVID-19) vaccine?										If a coronavirus (COVID-19) vaccine was required for international travel, would you be more or less inclined to accept a coronavirus (COVID-19) vaccine?										
		Much less likely		Somewhat less likely		Neither more nor less likely		Somewhat more likely		Much more likely		Much less likely		Somewhat less likely		Neither more nor less likely		Somewhat more likely		Much more likely		
		n	%	n	%	n	%	n	%	n	%	n	%	n	%	n	%	n	%	n	%	
Baseline vaccination intent	No, definitely not	632	312	49.4	27	4.3	249	39.4	28	4.4	16	2.5	282	44.6	31	4.9	257	40.7	34	5.4	28	4.4
	Unsure but lean no	741	171	23.1	81	10.9	369	49.8	101	13.6	19	2.6	137	18.5	79	10.7	344	46.4	124	16.7	57	7.7
	Unsure, but lean yes	1717	134	7.8	170	9.9	786	45.8	431	25.1	196	11.4	110	6.4	143	8.3	727	42.3	429	25	308	17.9
	Yes, definitely	11453	267	2.3	290	2.5	5507	48.1	1645	14.4	3744	32.7	245	2.1	293	2.6	4875	42.6	1619	14.1	4421	38.6
Sex	Female	7555	449	5.9	273	3.6	3615	47.9	1172	15.5	2046	27.1	397	5.2	273	3.6	3195	42.3	1184	15.7	2506	33.2
	Male	6988	435	6.2	295	4.2	3296	47.2	1033	14.8	1929	27.6	377	5.4	273	3.9	3008	43	1022	14.6	2308	33
Age	18-24	1797	161	9	153	8.5	647	36	369	20.5	467	26	145	8.1	161	9	601	33.4	346	19.2	544	30.3
	25-34	2579	204	7.9	184	7.1	1109	43	464	18	618	24	178	6.9	170	6.6	996	38.6	475	18.4	760	29.5
	35-44	2686	195	7.3	94	3.5	1328	49.4	478	17.8	591	22	162	6	90	3.4	1192	44.4	477	17.8	765	28.5
	45-54	2687	156	5.8	71	2.6	1312	48.8	395	14.7	753	28	143	5.3	66	2.5	1207	44.9	346	12.9	925	34.4
	55-64	2314	98	4.2	44	1.9	1186	51.2	244	10.5	742	32.1	76	3.3	29	1.2	1055	45.6	284	12.3	870	37.6
	65-79	2445	70	2.9	21	0.9	1310	53.6	251	10.3	793	32.4	70	2.9	28	1.1	1137	46.5	270	11	940	38.5
	80+	35	0	0	1	2.9	19	54.3	4	11.4	11	31.4	0	0	2	5.7	15	42.9	8	22.9	10	28.6
Education	level 1-3	6461	401	6.2	288	4.5	2926	45.3	960	14.9	1886	29.2	374	5.8	264	4.1	2697	41.7	947	14.7	2179	33.7
	level 4	6008	331	5.5	217	3.6	2999	49.9	969	16.1	1492	24.8	260	4.3	215	3.6	2619	43.6	960	16	1954	32.5
	none/other	2074	152	7.3	63	3	986	47.5	276	13.3	597	28.8	140	6.8	67	3.2	887	42.8	299	14.4	681	32.8
	Atheist or agnostic	4331	211	4.9	146	3.4	2292	52.9	635	14.7	1047	24.2	179	4.1	107	2.5	2134	49.3	609	14.1	1302	30.1
Religious affiliation	Christian	7097	414	5.8	245	3.5	3204	45.1	1060	14.9	2174	30.6	366	5.2	252	3.5	2803	39.5	1052	14.8	2624	37
	Hindu	195	17	8.7	16	8.2	54	27.7	48	24.6	60	30.8	13	6.7	18	9.2	54	27.7	41	21	69	35.4
	Jewish	88	5	5.7	2	2.3	36	40.9	7	8	38	43.2	6	6.8	7	8	27	30.7	8	9.1	40	45.5
	Muslim	611	44	7.2	53	8.7	240	39.3	133	21.8	141	23.1	38	6.2	68	11.1	189	30.9	137	22.4	179	29.3
	not given	954	75	7.9	46	4.8	478	50.1	144	15.1	211	22.1	68	7.1	46	4.8	438	45.9	158	16.6	244	25.6
	other religion	1267	118	9.3	60	4.7	607	47.9	178	14.1	304	24	104	8.2	48	3.8	558	44	201	15.9	356	28.1
Ethnicity	Asian/Asian British	936	58	6.2	73	7.8	366	39.1	178	19	261	27.9	54	5.8	73	7.8	289	30.9	188	20.1	332	35.5
	Black/Black British	394	58	14.7	37	9.4	146	37.1	79	20	74	18.8	49	12.4	36	9.1	119	30.2	74	18.8	116	29.4
	Mixed	301	26	8.6	31	10.3	107	35.5	56	18.6	81	26.9	24	8	28	9.3	101	33.5	63	20.9	85	28.2
	White	12645	716	5.7	415	3.3	6160	48.7	1846	14.6	3508	27.7	619	4.9	396	3.1	5580	44.1	1837	14.5	4213	33.3
	other ethnicity	267	26	9.7	12	4.5	132	49.4	46	17.2	51	19.1	28	10.5	13	4.9	114	42.7	44	16.5	68	25.5
Work status	full-time	6380	436	6.8	315	4.9	2790	43.7	1084	17	1755	27.5	370	5.8	299	4.7	2491	39	1081	16.9	2139	33.5
	looking after home/family	886	36	4.1	27	3	501	56.5	114	12.9	208	23.5	43	4.8	26	2.9	458	51.7	117	13.2	242	27.3
	part-time	2532	172	6.8	116	4.6	1203	47.5	407	16.1	634	25	141	5.6	101	4	1084	42.8	396	15.6	810	32
	retired / disabled	3105	113	3.6	29	0.9	1676	54	316	10.2	971	31.3	104	3.4	36	1.2	1496	48.2	337	10.8	1132	36.5
	student	710	46	6.5	39	5.5	292	41.1	137	19.3	196	27.6	41	5.8	50	7	244	34.4	140	19.7	235	33.1
	unemployed	845	67	7.9	38	4.5	406	48	136	16.1	198	23.4	63	7.5	28	3.3	389	46	126	14.9	239	28.3
other work status	85	14	16.5	4	4.7	43	50.6	11	12.9	13	15.3	12	14.1	6	7.1	41	48.2	9	10.6	17	20	
Language	English or Welsh	13664	795	5.8	492	3.6	6542	47.9	2049	15	3786	27.7	705	5.2	472	3.5	5914	43.3	2042	14.9	4531	33.2
	Polish	93	14	15.1	13	14	39	41.9	16	17.2	11	11.8	11	11.8	8	8.6	40	43	17	18.3	17	18.3
	other language	786	75	9.5	63	8	330	42	140	17.8	178	22.6	58	7.4	66	8.4	249	31.7	147	18.7	266	33.8

Table 1 | Cross-tabulation of change in inclination to accept a COVID-19 vaccine against baseline vaccination intent and socio-demographic status

Table 2 | Fixed-effect regression parameters from multilevel ordinal logistic regression model $Y|Z$ where Y is change in vaccination inclination due to vaccine passports for domestic use. Parameters associated with the effect of Y on Z are not shown, but all effects' 95% HPD exclude zero for all 12 UK regions.

group	variable	region	odds ratio
Education	Level 4 (versus level 1-3)	North West	0.84 [0.70, 1.00]
	Level 4 (versus level 1-3)	Yorkshire and the Humber	0.82 [0.68, 0.99]
	Level 4 (versus level 1-3)	East Midlands	0.74 [0.61, 0.91]
	Level 4 (versus level 1-3)	South East	0.73 [0.62, 0.86]
	Level 4 (versus level 1-3)	Scotland	0.82 [0.69, 0.99]
Ethnicity	Asian/Asian British (versus White)	West Midlands	1.43 [1.03, 2.05]
	Asian/Asian British (versus White)	London	1.31 [1.01, 1.71]
Religion	Christian (versus atheist/agnostic)	Yorkshire and the Humber	1.23 [1.03, 1.52]
	Christian (versus atheist/agnostic)	West Midlands	1.42 [1.15, 1.70]
	Christian (versus atheist/agnostic)	East of England	1.28 [1.07, 1.55]
	Jewish (versus atheist/agnostic)	London	1.96 [1.13, 3.54]
	Christian (versus atheist/agnostic)	South East	1.26 [1.07, 1.49]
	Christian (versus atheist/agnostic)	Wales	1.36 [1.09, 1.71]
	Christian (versus atheist/agnostic)	Northern Ireland	1.34 [1.03, 1.78]
Sex	Male (versus female)	East Midlands	0.80 [0.66, 0.98]
	Male (versus female)	London	0.82 [0.70, 0.96]
	Male (versus female)	South East	0.79 [0.67, 0.91]
	Male (versus female)	Scotland	0.83 [0.70, 1.00]
Work status	unemployed (versus full-time)	Yorkshire and the Humber	0.68 [0.47, 0.99]
	part-time (versus full-time)	London	0.79 [0.64, 0.96]
	student (versus full-time)	London	1.55 [1.12, 2.16]
	retired / disabled (versus full-time)	South West	0.72 [0.55, 0.94]
	looking after home / family (versus full-time)	Scotland	0.67 [0.48, 0.94]

Table 3 | Fixed-effect regression parameters from multilevel ordinal logistic regression model $Y|Z$ where Y is change in vaccination inclination due to vaccine passports for international travel.

Parameters associated with the effect of Y on Z are not shown, but all effects' 95% HPD exclude zero for all 12 UK regions.

group	variable	region	odds ratio
Age	55-64 (versus 18-24)	North West	1.35 [1.01, 1.72]
	65-79 (versus 18-24)	Yorkshire and the Humber	1.40 [1.03, 1.86]
	45-54 (versus 18-24)	East Midlands	1.38 [1.04, 1.82]
	65-79 (versus 18-24)	East Midlands	1.36 [1.00, 1.87]
	55-64 (versus 18-24)	South West	1.41 [1.04, 1.85]
	65-79 (versus 18-24)	South West	1.36 [1.02, 1.86]
Education	Level 4 (versus level 1-3)	East Midlands	0.80 [0.65, 0.99]
	Level 4 (versus level 1-3)	London	1.22 [1.02, 1.45]
Ethnicity	Asian/Asian British (versus White)	North West	1.47 [1.03, 2.08]
	Asian/Asian British (versus White)	Yorkshire and the Humber	1.48 [1.02, 2.16]
	Asian/Asian British (versus White)	West Midlands	1.57 [1.12, 2.18]
	Asian/Asian British (versus White)	East of England	1.68 [1.14, 2.47]
	Asian/Asian British (versus White)	London	1.40 [1.09, 1.79]
	Asian/Asian British (versus White)	Scotland	1.62 [1.08, 2.52]
Language	Other (versus English / Welsh)	South East	1.88 [1.22, 2.89]
Religion	Christian (versus atheist/agnostic)	North East	1.32 [1.04, 1.67]
	Christian (versus atheist/agnostic)	Yorkshire and the Humber	1.22 [1.00, 1.46]
	Christian (versus atheist/agnostic)	West Midlands	1.30 [1.06, 1.58]
	Christian (versus atheist/agnostic)	London	1.18 [1.00, 1.40]
	Christian (versus atheist/agnostic)	South East	1.29 [1.09, 1.52]
	Christian (versus atheist/agnostic)	South West	1.28 [1.06, 1.55]
	Christian (versus atheist/agnostic)	Northern Ireland	1.32 [1.01, 1.74]
Sex	Male (versus female)	West Midlands	0.81 [0.68, 0.99]
	Male (versus female)	London	0.85 [0.72, 0.99]
	Male (versus female)	South East	0.84 [0.72, 1.00]
	Male (versus female)	Wales	0.70 [0.56, 0.90]
	Male (versus female)	Scotland	0.78 [0.66, 0.93]
Work status	looking after home / family (versus full-time)	North West	0.72 [0.53, 0.98]
	student (versus full-time)	London	1.44 [1.08, 1.99]
	looking after home / family (versus full-time)	South East	0.72 [0.55, 0.97]
	looking after home / family (versus full-time)	South West	0.68 [0.48, 0.97]
	looking after home / family (versus full-time)	Scotland	0.59 [0.42, 0.81]

Table 4 | First COVID-19 doses administered by age and sex Data for the number of first-dose COVID-19 vaccinations administered provided by NHS England (<https://coronavirus.data.gov.uk/details/vaccinations>, accessed 30 April 2021) and 2019 ONS mid-year population estimates from <https://www.ons.gov.uk/peoplepopulationandcommunity/populationandmigration/populationestimates> (accessed 30 April 2021)

Age	Doses administered (NHS England)		Population estimate (ONS)		Doses administered per population estimate (%)	
	Male	Female	Male	Female	Male	Female
45-49	1,236,456	1,361,695	1,839,293	1,876,519	67.2	72.6
50-54	1,721,858	1,758,450	1,926,928	1,980,533	89.4	88.8
55-59	1,730,833	1,755,668	1,809,613	1,861,038	95.6	94.3
60-64	1,507,365	1,533,599	1,527,238	1,584,597	98.7	96.8
65-69	1,285,168	1,350,404	1,352,800	1,443,940	95.0	93.5
70-74	1,292,381	1,409,747	1,330,150	1,449,176	97.2	97.3
75-80	924,404	1,059,725	900,710	1,039,976	102.6	101.9
80+	1,104,100	1,593,389	1,152,541	1,684,423	95.8	94.6

Questionnaire

DEM We will begin by asking you some questions about yourself

JS

DEMA GENUM How old are you?

▼ 18 (1) ... 100 (83)



DEMREG Which UK region do you live in?

▼ East Midlands (1) ... Other (for example, Jersey, Guernsey, Isle of Man) (13)

DEMSEX I am

- Male (1)
- Female (2)
- Other (3)

DEMEDU What is the highest level of education you have completed? (Select the response that best applies)

- No academic qualifications (1)
- 0-4 GCSE, O-levels, or equivalents (2)
- 5+ GCSE, O-levels, 1 A level, or equivalents (3)
- Apprenticeship (4)
- 2+ A levels or equivalents (5)
- Undergraduate or postgraduate degree, or other professional qualification (6)
- Other (e.g. vocational, foreign qualifications) (7)
- Do not know (8)
- Do not wish to answer (9)

DEMWRK Which of the following best describes your work status 6 months ago?

- Working full-time (including self-employed) (1)
 - Working part-time (including self-employed) (2)
 - Unemployed (3)
 - Student (4)
 - Looking after the home (5)
 - Retired (6)
 - Unable to work (including, for example, a short- or long-term disability) (9)
 - Do not wish to answer (8)
-

DEMREL Do you consider yourself

- Christian (1)
- Hindu (2)
- Muslim (3)
- Jewish (4)
- Buddhist (5)
- Atheist or agnostic (6)
- Other (7)
- Do not wish to answer (8)

DEMETH Which best describes your ethnicity (select the response that best applies)

- White: English/Welsh/Scottish/Northern Irish/British (1)
 - White: Irish (2)
 - White: Other white background (3)
 - White and Black Caribbean (4)
 - White and Black African (5)
 - White and Asian or White and Asian British (6)
 - Black, African, Caribbean or Black British (12)
 - Asian or Asian British: Indian (7)
 - Asian or Asian British: Pakistani (8)
 - Asian or Asian British: Chinese (10)
 - Asian or Asian British: Other (11)
 - Gypsy or Irish traveller (16)
 - Other (13)
 - Do not wish to answer (14)
 - Roma (15)
-

DEMLAN What is your main language

- English or Welsh (1)
 - Polish (2)
 - Punjabi (3)
 - Urdu (4)
 - Bengali (5)
 - Other (6)
 - Do not wish to answer (7)
-

DEMINC What is your total household income in GBP (£) from all sources before tax?

- Under £15,000 (1)
 - £15,000 to £24,999 (2)
 - £25,000 to £34,999 (3)
 - £35,000 to £44,999 (4)
 - £45,000 to £54,999 (5)
 - £55,000 to £64,999 (6)
 - £65,000 to £99,999 (7)
 - Over £100,000 (8)
 - Do not wish to answer (9)
-

COV_INTRO We will now ask you some questions about coronavirus (COVID-19) and new COVID-19 vaccines.

COV_INV Have you received an invitation to receive a coronavirus (COVID-19) vaccine?

- Yes (1)
- No (2)
- Do not know (3)

COV_DOSE Have you had at least one dose of a coronavirus (COVID-19) vaccine?

- Yes, I have had one dose (1)
- Yes, I have had both doses (2)
- No (3)

COV_DOSE_2 Do you intend on receiving your second dose?

- Yes, definitely (1)
- Unsure, but leaning towards yes (2)
- Unsure, but leaning towards no (3)
- No, definitely not (4)

COV_VAC_1 Do you intend on accepting a coronavirus (COVID-19) vaccine?

- Yes, definitely (1)
- Unsure, but leaning towards yes (3)
- Unsure, but leaning towards no (4)
- No, definitely not (2)

COV_APT Have you booked an appointment to receive a coronavirus (COVID-19) vaccine?

- Yes (1)
- No (2)

VAC_PASS_UK If a coronavirus (COVID-19) certificate or passport was required to attend social events in the UK (such as sports events, theatres, pubs, or restaurants), would you be more or less inclined to accept a coronavirus (COVID-19) vaccine?

- Much less inclined (1)
 - Somewhat less inclined (2)
 - Neither more nor less inclined (7)
 - Somewhat more inclined (8)
 - Much more inclined (5)
 - Do not know / prefer not to say (6)
-

VAC_PASS_INT If a coronavirus (COVID-19) certificate or passport was required for international travel, would you be more or less inclined to accept a coronavirus (COVID-19) vaccine?

- Much less inclined (1)
- Somewhat less inclined (2)
- Neither more nor less inclined (3)
- Somewhat more inclined (4)
- Much more inclined (5)
- Do not know / prefer not to say (6)