

The novel cardiokine GDF3 predicts adverse fibrotic remodeling post-myocardial infarction

Nihar Masurkar ^{a†} PhD, Marion Bouvet ^{a†} PhD, Damien Logeart ^b MD PhD, Olivier Claude ^a PhD, Maguelonne Roux ^c PhD, Clément Delacroix ^a PhD, Damien Bergerot ^d Msc, Jean-Jacques Mercadier ^e MD PhD, Marc Sirof ^b MD PhD, Barnabas Gellen MD PhD ^f, Marine Livrozet ^d MD PhD, Antoine Fayol ^d MD, Estelle Robidel ^a MsC, David-Alexandre Trégouët ^g PhD, Giovanna Marazzi ^a MD PhD, David Sassoon ^a PhD, Mariana Valente ^a PhD, and Jean-Sébastien Hulot ^{a,d*} MD PhD.

SUPPLEMENTAL MATERIAL

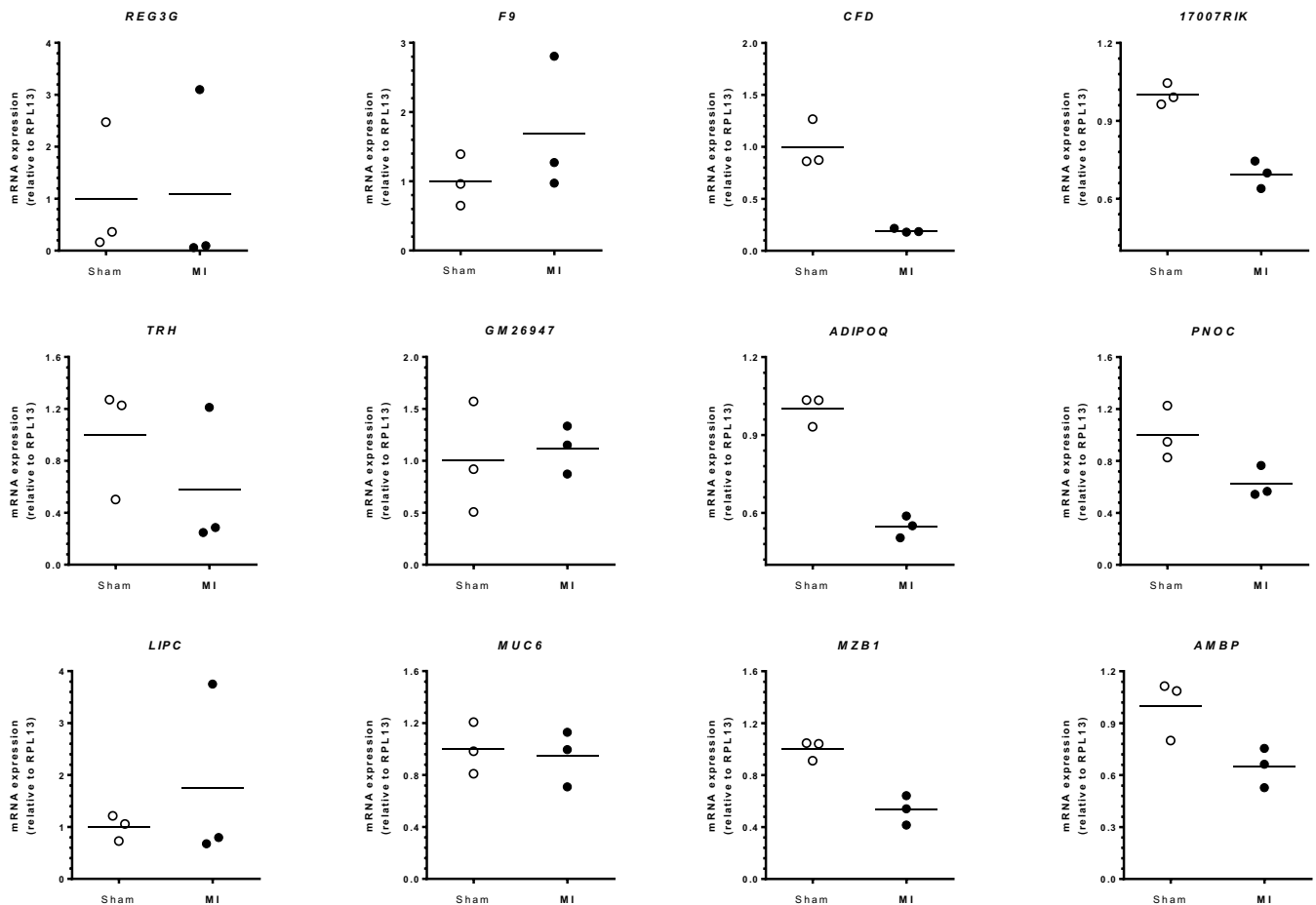
Supplemental Tables : 1

Supplemental Figures : 5

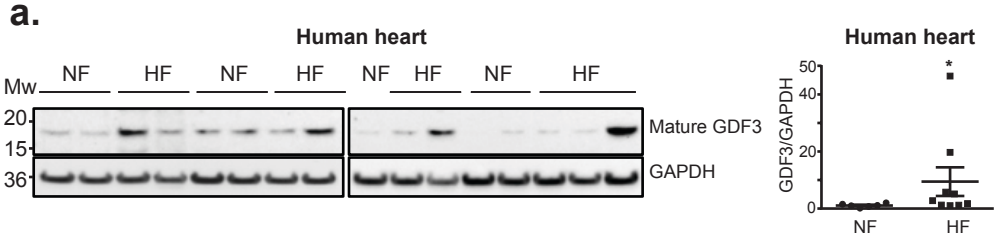
Supplemental Table 1. PCR primers

GENE	FORWARD PRIMER (5' TO 3')	REVERSE PRIMER (5' TO 3')
<i>CCL8</i>	TCTACGCAGTGCTTCTTTGCC	AAGGGGGATCTTCAGCTTTAGTA
<i>PRTN3</i>	ATGGCTGGAAGCTACCCATC	TGCCACCTACAATCTTGGAG
F10	AGGACTCGGAGGGCAAACCT	TCACGGACCTCTTCATAAGAACA
SAA3	TGCCATCATTCTTTGCATCTTGA	CCGTGAACTTCTGAACAGCCT
APOC4	TGTTCTTGGTCAGCTTTGTAGC	AGGCTGTGGGTCTTGTTTAGG
APOC2	ATGGGGTCTCGGTTCTTCCT	GTCTTCTGGTACAGGTCTTTGG
PROK2	TTGCGACAAGGACTCTCAGT	CCCATAGGTCAGATCCT
CIQTNF3	GCTGGTAAACATAGGTGGCG	GCGGTTCTTCATCAGCTTCA
CELA1	GGGGCTCCTCTGTGAAGAAT	AGCATACTGACCGTTCACCA
GDF3	TTCAGCTTCTCCAGACCAG	CCTTTTCTTTGATGGCAGACAAG
DMKN	CGGGAGTCACACCTTCATCT	AACTTCAGCCACTTCAGCAG
NDP	AGTCTGAGAAGAAGGAGCCC	GCTTCTTTCACTTGCAACCG
RPL13	GGGTGGCCAGCTTAAGTTCT	GAGGAGGCGAAACAAGTCCA

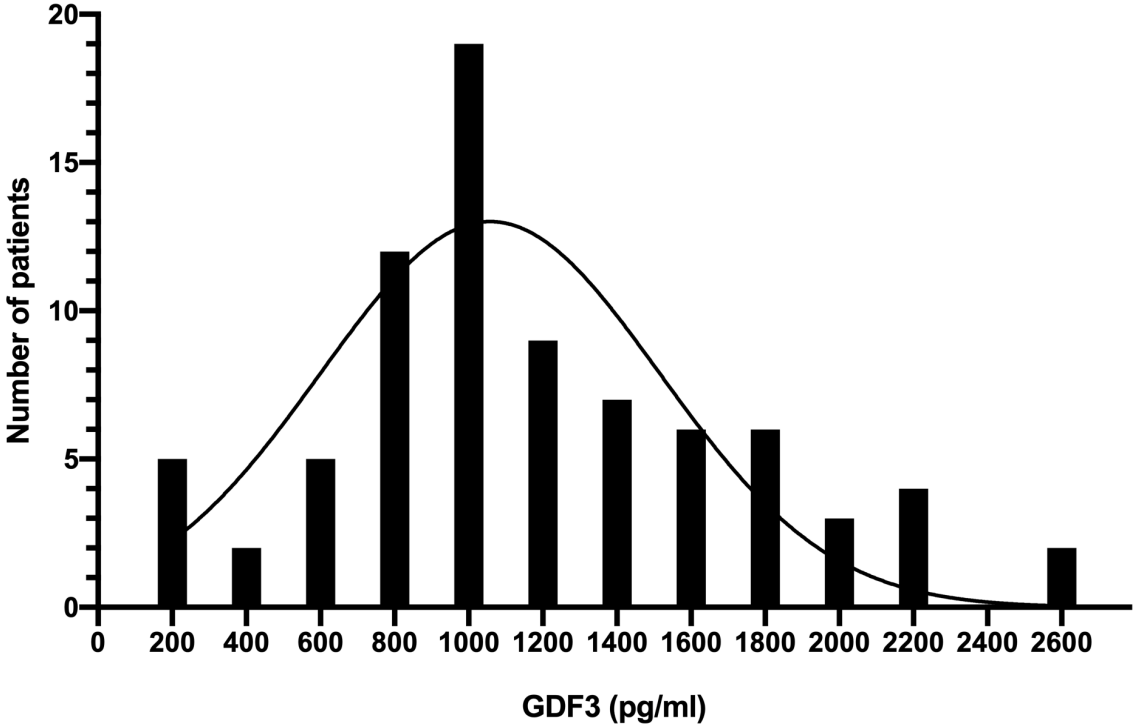
Online Figure 1. Expression of candidates that were not increased in the ischemic heart. qPCR evaluation of *REG3G*, *F9*, *CFD*, *17007RIK*, *TRH*, *GM26947*, *ADIPOQ*, *PNOG*, *LIPC*, *MUC6*, *MZB1*, and *AMB P* expression in the infarcted area of MI hearts and the corresponding area of sham hearts (N = 3). Statistical significance was determined by Mann-Whitney test, *P < 0.05, **P < 0.01 and ***P < 0.001.



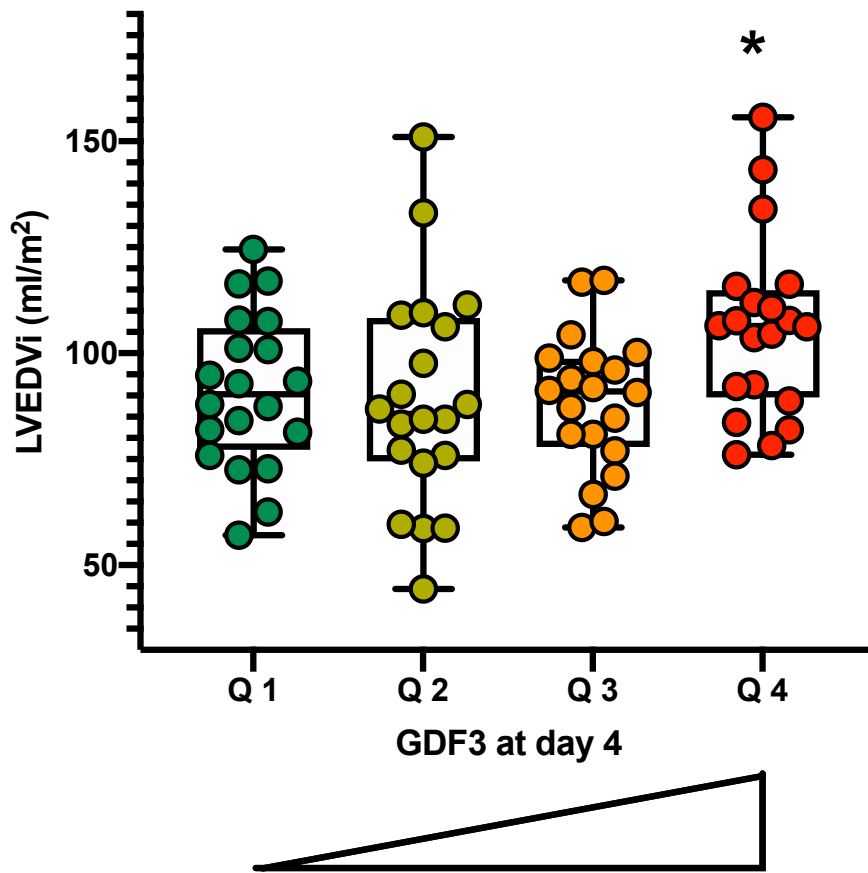
Online Figure 2. Expression of GDF3 in human hearts. Representative Western blots and quantification of mature GDF3 in non-failing (NF) (n = 6) and failing hearts (HF) (n = 9) of patients. *P < 0.05 as determined by Mann Whitney test



Online Figure 3. Distribution of plasma GDF3 levels. GDF3 was measured by ELISA in human plasmas collected at day 4±2 post-PCI.

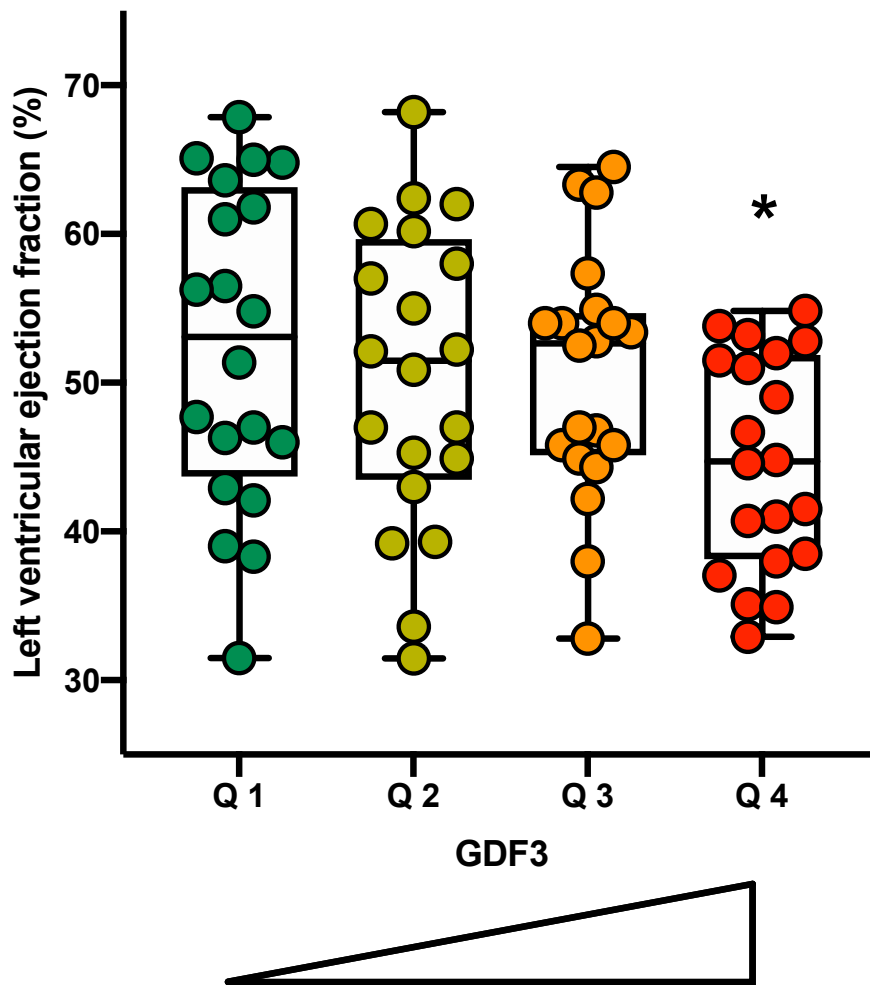


Online Figure 4. Left ventricular end-diastolic volume indexed for body surface area measured on cardiac MRI 6 months after MI, according to GDF3 quartiles. GDF3 was measured by ELISA in human plasmas collected at day 4±2 post-PCI and patients were classified into 4 quartiles according to GDF3 levels. Statistical significance was determined by one way ANOVA followed by comparison tests, *P < 0.05



	GDF3 levels (pg/mL)			
	Quartile 1 [150-807]	Quartile 2 [825-1040]	Quartile 3 [1050-1510]	Quartile 4 [1550-2570]
LVEDVi (ml/m²) Mean	91.0	89.1	88.3	105.9
SD	18.2	25.9	16.3	20.9

Online Figure 5. Left ventricular ejection fraction measured on cardiac MRI 6 months after MI, according to GDF3 quartiles. GDF3 was measured by ELISA in human plasmas collected at day 4±2 post-PCI and patients were classified into 4 quartiles according to GDF3 levels. Statistical significance was determined by one way ANOVA followed by comparison tests, *P < 0.05



	GDF3 levels (pg/mL)			
	Quartile 1 [150-807]	Quartile 2 [825-1040]	Quartile 3 [1050-1510]	Quartile 4 [1550-2570]
LVEF (%)				
Mean	52.4	50.5	50.6	44.7
SD	10.7	10.1	8.3	7.2