

1 **Supplementary Text:**

2 Details of mechanistic model

3 Each infected host (who developed symptoms) was assumed to progress through latent (E),
4 presymptomatic infectious (P) and symptomatic infectious (I) stages. We denote the
5 infectiousness of hosts in the P and I stages by β_P and β_I , respectively, and define the ratio
6 $\alpha_P = \beta_P/\beta_I$. The duration of each stage, denoted $y_{E/P/I}$, was assumed to be gamma
7 distributed:

8
$$y_E \sim \text{Gamma}(k_E, 1/(k_{inc}\gamma)),$$

9
$$y_P \sim \text{Gamma}(k_P, 1/(k_{inc}\gamma)),$$

10
$$y_I \sim \text{Gamma}(k_I, 1/(k_I\mu)),$$

11 where we write $X \sim \text{Gamma}(a, b)$ for a gamma distributed random variable with shape
12 parameter a and scale parameter b . We assumed that $k_E + k_P = k_{inc}$, so that the incubation
13 period, $\tau_{inc} = y_E + y_P$, was gamma distributed, with

14
$$\tau_{inc} \sim \text{Gamma}(k_{inc}, 1/(k_{inc}\gamma)).$$

15 Here, the parameters k_{inc} and $1/\gamma$ (which represent the shape parameter of the incubation
16 period distribution and the reciprocal of the mean incubation period, respectively) were fixed
17 in order to obtain the specified incubation period distribution (the exact values that we
18 assumed are given in Table S1).

19

20 For simplicity, we assumed that $k_I = 1$, so the symptomatic infectious period was
21 exponentially distributed. The parameters k_E (the shape parameter of the latent (E) period
22 distribution), $1/\mu$ (the mean symptomatic infectious (I) period) and α_P (the ratio between the
23 transmission rates of hosts in the P and I stages) were estimated when we fitted the model to
24 the household transmission data.

25

26 Hosts who remained asymptomatic throughout infection were assumed to follow the same
 27 *E/P/I* stages, although in this case the distinction between the *P* and *I* stages has no
 28 epidemiological meaning. Stage durations, as well as the value of α_P , were assumed to be
 29 identical for entirely asymptomatic hosts and those who developed symptoms, so that the
 30 generation time distribution was the same for all hosts.

31

32 *Conditional infectiousness*

33 For a host who develops symptoms, conditional on incubation period τ_{inc} , the expected
 34 infectiousness at time since infection τ is [1]

$$35 \quad \beta(\tau | \tau_{inc}) = \begin{cases} \alpha_P C(\beta_0/n)(1 - F_{Beta}(1 - \tau/\tau_{inc}; k_P, k_E)), & 0 < \tau < \tau_{inc}, \\ C(\beta_0/n)(1 - F_I(\tau - \tau_{inc})), & \tau > \tau_{inc}. \end{cases}$$

36 Here, β_0 is the overall infectiousness parameter (see Methods in the main text), n is the
 37 household size, $F_I(y)$ is the cumulative distribution of the duration of the *I* stage,
 38 $F_{Beta}(x; a, b)$ is the cumulative distribution of a beta distributed random variable with shape
 39 parameters a and b , and

$$40 \quad C = \frac{k_{inc}\gamma\mu}{\alpha_P k_P \mu + k_{inc}\gamma}.$$

41

42 The cumulative conditional infectiousness can therefore be calculated to be

$$43 \quad B(\tau | \tau_{inc}) = \int_0^\tau \beta(\tilde{\tau} | \tau_{inc}) d\tilde{\tau}$$

$$44 \quad = \begin{cases} (\tau - \tau_{inc})\beta(\tau | \tau_{inc}) + \frac{\alpha_P C \beta_0}{n} \left[\frac{k_P \tau_{inc}}{k_{inc}} (1 - F_{Beta}(1 - \tau/\tau_{inc}; k_P + 1, k_E)) \right], & 0 \leq \tau < \tau_{inc}, \\ (\tau - \tau_{inc})\beta(\tau | \tau_{inc}) + \frac{C \beta_0}{n} \left[\frac{\alpha k_P \tau_{inc}}{k_{inc}} + \frac{1}{\mu} F_{Gamma}(\tau - \tau_{inc}; k_I + 1, \frac{1}{k_I \mu}) \right], & \tau \geq \tau_{inc}, \end{cases}$$

45 where $F_{Gamma}(x; a, b)$ is the cumulative distribution of a gamma distributed random variable
 46 with shape parameter a and scale parameter b . The total force of infection on each household
 47 member (over the course of infection) is then

48
$$B(\infty | \tau_{inc}) = \frac{\beta_0}{n} \left(\frac{\alpha k_P \gamma \mu \tau_{inc} + k_{inc} \gamma}{\alpha k_P \mu + k_{inc} \gamma} \right).$$

49 The mean of this expression over the incubation period distribution is then β_0/n .

50

51 For hosts who remained asymptomatic throughout infection, conditional on the combined
 52 duration of the E and P stages, $\tau_{inc} = y_E + y_P$, the infectiousness, $\beta(\tau | \tau_{inc})$, was given by
 53 α_A times the corresponding expression for those who developed symptoms. We note that in
 54 this case, τ_{inc} has no epidemiological interpretation, but this conditional infectiousness was
 55 useful when fitting parameters (see ‘‘Parameter fitting’’ below).

56

57 *Generation time distribution*

58 The generation time, τ_{gen} , can be written as

59
$$\tau_{gen} = y_E + y^*,$$

60 where y_E is the length of the latent (E) stage, and y^* is the time from the start of the
 61 presymptomatic infectious (P) stage to the transmission occurring. As shown in [1], y^* has
 62 density

63
$$f^*(y^*) = C \left(\alpha_P (1 - F_P(y^*)) + \int_0^{y^*} (1 - F_I(y^* - y_P)) f_P(y_P) dy_P \right).$$

64 Using this density, it can be shown that the moments of this distribution are

65
$$E[(y^*)^m] = \frac{C}{m+1} (\alpha_P E[y_P^{m+1}] + E[(y_P + y_I)^{m+1} - y_P^{m+1}]).$$

66 In particular, we have

67
$$E[y^*] = \frac{C}{2} (\alpha_P E[y_P^2] + 2E[y_P]E[y_I] + E[y_I^2]),$$

68
$$\text{Var}[y^*] = \frac{C}{3} (\alpha_P E[y_P^3] + 3E[y_P^2]E[y_I] + 3E[y_P]E[y_I^2] + E[y_I^2]) - (E[y^*])^2.$$

69 Note that for a gamma distributed random variable, $X \sim \text{Gamma}(a, b)$, we have

70
$$E[X^m] = \frac{\Gamma(a+m)}{\Gamma(a)} b^m = a(a+1) \dots (a+(m-1))b^m.$$

71 Therefore, for gamma distributed stage durations, explicit expressions can be obtained for the
72 mean and variance of the generation time distribution,

73
$$E[\tau_{gen}] = E[y_E] + E[y^*],$$

74
$$\text{Var}[\tau_{gen}] = \text{Var}[y_E] + \text{Var}[y^*],$$

75 since y_E and y^* are assumed to be independent.

76

77 *Proportion of presymptomatic transmissions*

78 Among infectors who develop symptoms, the proportion of transmissions occurring prior to
79 symptom onset is given by [1]

80
$$q_P = \frac{\left(\frac{\beta_P k_P}{k_{inc} \gamma}\right)}{\left(\frac{\beta_P k_P}{k_{inc} \gamma} + \frac{\beta_I}{\mu}\right)} = \frac{\alpha_P k_P \mu}{\alpha_P k_P \mu + k_{inc} \gamma}.$$

81

82 *Parameter fitting*

83 The vector of model parameters,

84
$$\theta = (k_E/k_{inc}, 1/\mu, \alpha_P, \beta_0),$$

85 was estimated by fitting the mechanistic model to the household transmission data.

86

87 We assumed independent prior distributions for each entry of θ . Lognormal priors were
88 assumed for $1/\mu$, α_P and β_0 . Since α_P represents the ratio between the transmission rate of
89 hosts in the P and I stages, a prior with median 0 was used to ensure equal prior probabilities
90 of values above and below 1. This prior was also chosen to limit the prior probability of
91 extreme values, with a prior 95% credible interval of [0.2,5]. A beta prior was used for
92 k_E/k_{inc} (which was constrained to lie between 0 and 1), and was chosen to restrict the prior

93 probability of values very close to either 0 or 1. The exact priors we used are given in Table
94 S3.

95

96 A slightly amended version of the parameter fitting algorithm described in the main text for
97 the independent transmission and symptoms model was used. In particular, we augmented the
98 observed data with:

99 i. The infection time, t_j , of each infected host.

100 ii. The time, $t_{s,j}$, at which each infected host transitioned from the P to I stage.

101 Note that for hosts who developed symptoms, the time of entry into the I stage corresponds to
102 the symptom onset time. The data were also augmented with this transition time for entirely
103 asymptomatic infected hosts because the conditional infectiousness, $\beta(\tau | t_{s,j} - t_j)$, was
104 relatively easy to calculate compared to $\beta(\tau)$.

105

106 In each step of the chain, we carried out (in turn) one of the following:

107 1. Propose new values for the vector of model parameters, θ , using a multivariate
108 normal proposal distribution (around the value of θ in the previous step of the
109 chain; a correlation of 0.5 was used between the proposal distributions of
110 k_E/k_{inc} and α_P , and between those of $1/\mu$ and α_P). Accept the proposed
111 parameters, θ_{prop} , with probability

112
$$\min\left(\frac{L(\theta_{prop}; \mathbf{t})\pi(\theta_{prop})}{L(\theta_{old}; \mathbf{t})\pi(\theta_{old})}, 1\right),$$

113 where θ_{old} denotes the vector of parameter values from the previous step of
114 the chain, and where the augmented data, \mathbf{t} , remain unchanged in this step.

115 2. Propose new values for the precise symptom onset times of each symptomatic
116 infected host, using independent uniform proposal distributions (within the

117 day of symptom of onset for each host). For each household, m , accept the
 118 proposed augmented data, $\mathbf{t}_{prop}^{(m)}$, from that household with probability

$$119 \quad \min \left(\frac{L^{(m)}(\theta; \mathbf{t}_{prop}^{(m)})}{L^{(m)}(\theta; \mathbf{t}_{old}^{(m)})}, 1 \right),$$

120 where $\mathbf{t}_{old}^{(m)}$ denotes the corresponding augmented data from the previous step
 121 of the chain, and where the model parameters, θ , remain unchanged in this
 122 step (i.e., proposed times are accepted/rejected independently for each
 123 household, according to the likelihood contribution from that household).

124 3. Propose new values for the infection time of one randomly chosen infected
 125 host in each household (either symptomatic or asymptomatic), using
 126 independent normal proposal distributions (around the equivalent times in the
 127 previous step of the chain). For each household, m , accept the proposed
 128 augmented data, $\mathbf{t}_{prop}^{(m)}$, from that household with probability

$$129 \quad \min \left(\frac{L^{(m)}(\theta; \mathbf{t}_{prop}^{(m)})}{L^{(m)}(\theta; \mathbf{t}_{old}^{(m)})}, 1 \right).$$

130 4. Propose new values for both the infection time, t , and the time of the start of
 131 the I stage, t_s , holding $t_s - t$ constant, for one randomly chosen asymptomatic
 132 infected host in each household (in households where there was at least one),
 133 using independent normal proposal distributions (around the equivalent times
 134 in the previous step of the chain). For each household, m , accept the proposed
 135 augmented data, $\mathbf{t}_{prop}^{(m)}$, from that household with probability

$$136 \quad \min \left(\frac{L^{(m)}(\theta; \mathbf{t}_{prop}^{(m)})}{L^{(m)}(\theta; \mathbf{t}_{old}^{(m)})}, 1 \right).$$

137

138 Relationship between generation time, TOST and serial interval

139 Here, we consider a randomly chosen infector-infectee pair (in which both the infector and
140 the infectee develop symptoms) within a large, well-mixed population. In that setting, the
141 observed distribution of generation times is equal to the normalised infectiousness profile,
142 which will not be true within a household (cf. Figure 1 and Figure S4). We define:

143 $\tau_{inc,1}$ = (incubation period of the infector),

144 $\tau_{inc,2}$ = (incubation period of the infectee),

145 τ_{gen} = (generation time),

146 x_{tost} = (time from onset of symptoms (of infector) to transmission (TOST)),

147 x_{ser} = (serial interval),

148 where we use τ for time intervals relative to the time of infection and x for those relative to
149 the time of symptom onset. We denote the probability density functions of these time periods
150 by $f_{inc,1}$, $f_{inc,2}$, f_{gen} , f_{tost} and f_{ser} , respectively. Note that we have

151
$$x_{tost} = \tau_{gen} - \tau_{inc,1},$$

152 and

153
$$x_{ser} = x_{tost} + \tau_{inc,2},$$

154 so that

155
$$x_{ser} = \tau_{gen} + \tau_{inc,2} - \tau_{inc,1}.$$

156

157 In the independent transmission and symptoms model, τ_{gen} and $\tau_{inc,1}$ are assumed to be
158 independent, and the incubation periods of the infector and infectee are assumed to be drawn
159 independently from the population incubation period distribution, $f_{inc} = f_{inc,1} = f_{inc,2}$.

160 Therefore, the TOST distribution is given by the convolution

161
$$f_{tost}(x_{tost}) = \int_0^\infty f_{gen}(x_{tost} + \tau) f_{inc}(\tau) d\tau. \quad (1)$$

162 We also assume that x_{tost} and $\tau_{inc,2}$ are independent, so the serial interval distribution can be
 163 calculated from the TOST distribution as

$$164 \quad f_{ser}(x_{ser}) = \int_0^{\infty} f_{tost}(x_{ser} - \tau) f_{inc}(\tau) d\tau. \quad (2)$$

165 Note that

$$166 \quad E[x_{ser}] = E[\tau_{gen}] + E[\tau_{inc,2}] - E[\tau_{inc,1}] = E[\tau_{gen}],$$

167 i.e., the generation time and serial interval distributions have the same mean.

168

169 For the mechanistic model, we still have $f_{inc,2} = f_{inc}$, and the serial interval distribution can
 170 be calculated from the TOST distribution using equation (2). On the other hand, τ_{gen} and
 171 $\tau_{inc,1}$ are not independent, so equation (1) connecting the TOST and generation time
 172 distributions for the independent transmission and symptoms model does not hold for the
 173 mechanistic model. As shown in [1], the TOST distribution for the mechanistic model is,
 174 instead, given by

$$175 \quad f_{tost}(x_{tost}) = \begin{cases} \alpha_p C(1 - F_p(-x_{tost})), & x_{tost} < 0, \\ C(1 - F_I(x_{tost})), & x_{tost} \geq 0. \end{cases}$$

176

177 Further, under the mechanistic model, the expected number of presymptomatic transmissions
 178 generated by an infected host is dependent on their incubation period. As a result, the
 179 infector's incubation period does not follow the same distribution as that of the infectee. In
 180 particular, by Bayes' theorem, we have

$$181 \quad f_{inc,1}(\tau_{inc,1}) = p(\tau_{inc,1} | 1 \rightarrow 2) = \frac{p(1 \rightarrow 2 | \tau_{inc,1}) f_{inc}(\tau_{inc,1})}{p(1 \rightarrow 2)},$$

182 where we write $1 \rightarrow 2$ to denote the occurrence of the transmission from the infector to the
 183 infectee. Because we are here considering a large population, the probability of the

184 transmission occurring is proportional to the overall infectiousness of the infector (integrated
 185 over the course of infection), $B(\infty)$, so we have

$$186 \quad f_{inc,1}(\tau_{inc,1}) = \frac{B(\infty | \tau_{inc})f_{inc}(\tau_{inc,1})}{B(\infty)} = \left(\frac{\alpha_p k_p \gamma \mu \tau_{inc,1} + k_{inc} \gamma}{\alpha_p k_p \mu + k_{inc} \gamma} \right) f_{inc}(\tau_{inc,1}).$$

187 The expected incubation period of the infector is then

$$188 \quad E[\tau_{inc,1}] = \frac{1}{\gamma} + \frac{\alpha_p k_p \mu}{k_{inc} \gamma (\alpha_p k_p \mu + k_{inc} \gamma)} = E[\tau_{inc,2}] + \frac{q_p}{k_{inc} \gamma},$$

189 where q_p is the proportion of transmissions occurring prior to symptom onset.

190

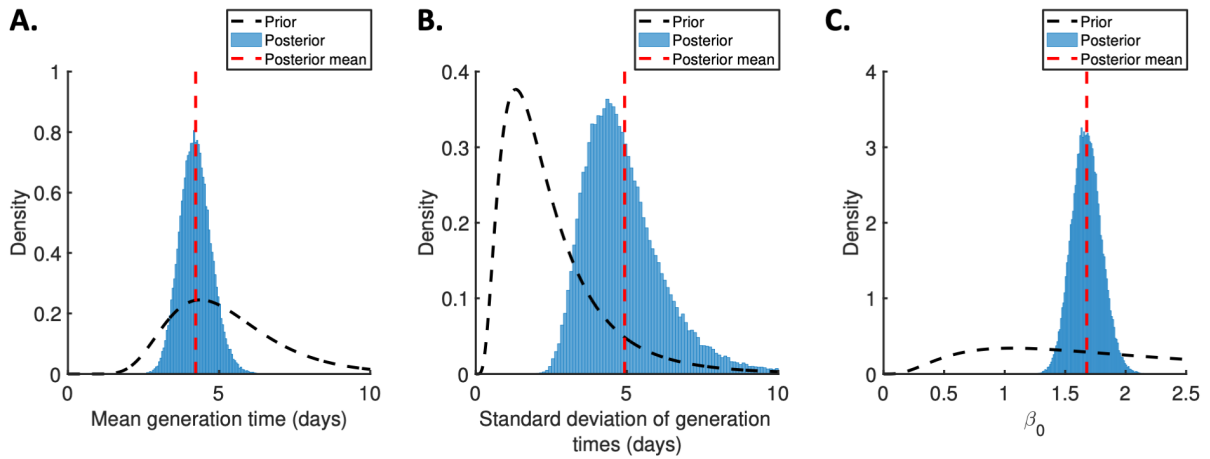
191 As a result of the above, the expected values of the generation time and serial interval in the
 192 mechanistic model are not equal. Instead, we have

$$193 \quad E[x_{ser}] = E[\tau_{gen}] - \frac{q_p}{k_{inc} \gamma}.$$

194 Under the values of k_{inc} and γ that we assumed (Table S1), this gives a mean generation time
 195 that is approximately $(1.6 \times q_p)$ days longer than the mean serial interval.

196

197 **Supplementary Figures:**



198

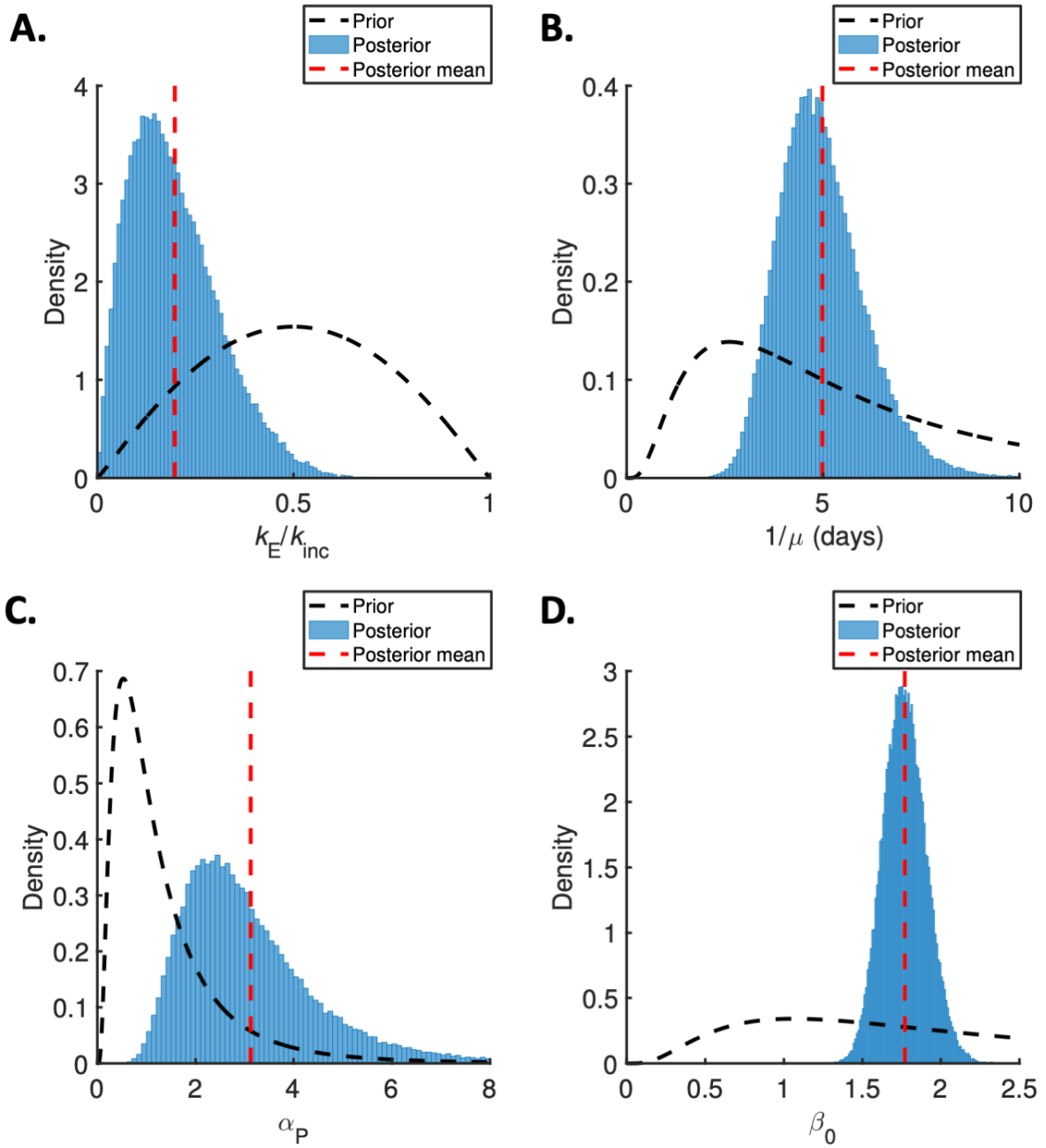
199 **Figure S1. Posterior distributions for the independent transmission and symptoms model. Prior**

200 distributions (black dotted lines), posterior distributions (blue bars), and posterior means (vertical red dotted

201 lines) for fitted parameters in the independent transmission and symptoms model. A. Mean generation time. B.

202 Standard deviation of generation times. C. Overall infectiousness, β_0 .

203



204

205 **Figure S2. Posterior distributions for the mechanistic model.** Prior distributions (black dotted lines),

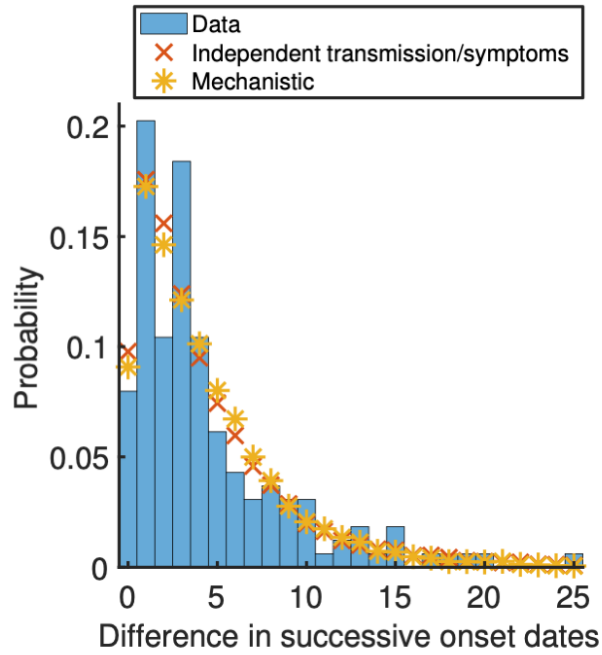
206 posterior distributions (blue bars), and posterior means (vertical red dotted lines) for fitted parameters in the

207 mechanistic model. A. Ratio of mean durations of the latent (E) and incubation (E+P) periods, k_E/k_{inc} . B.

208 Mean symptomatic infectious (I) period, $1/\mu$. C. Ratio of transmission rates in the P and I stages, α_P . D. Overall

209 infectiousness, β_0 .

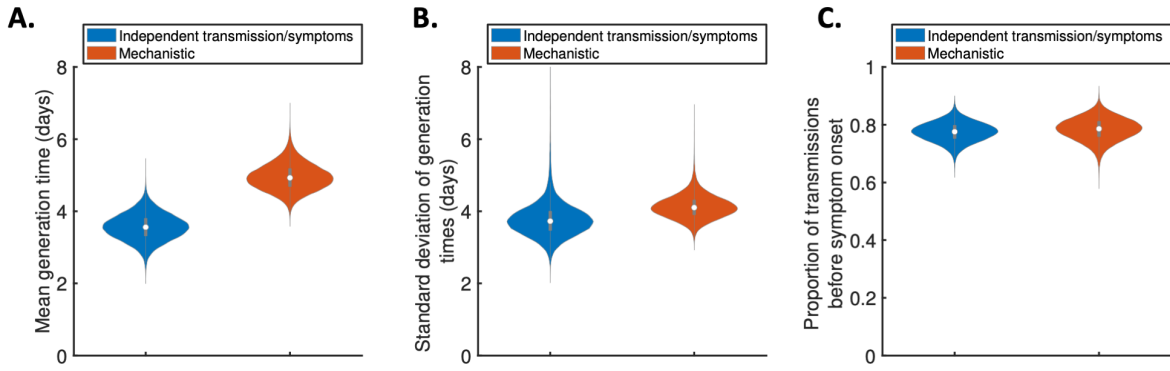
210



211

212 **Figure S3. Observed and model-predicted distributions of intervals between successive symptom onset**
 213 **dates.** Using posterior mean parameter estimates, we predicted the distribution of the difference in successive
 214 symptom onset dates (this differs from the serial interval because an infected individual may not have been
 215 infected by the previous household member to develop symptoms) under the fitted independent transmission
 216 and symptoms model (red crosses) and mechanistic model (yellow stars). These distributions were compared to
 217 the UK household data (blue bars). The distributions for the fitted models were obtained by generating synthetic
 218 data from 16,700 households using the same distribution of household sizes as in the UK data.

219



220

221

Figure S4. Generation times within study households. Violin plots indicating posterior distributions of the

222

mean (A) and standard deviation (B) of realised generation times in the study households, and the proportion of

223

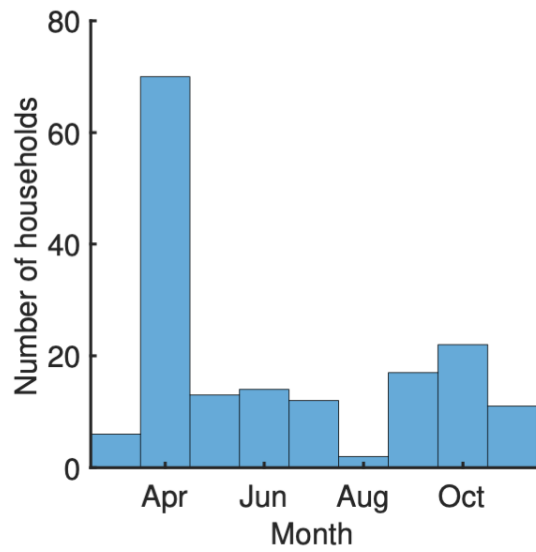
transmissions occurring prior to symptom onset (C), for the independent transmission and symptoms model

224

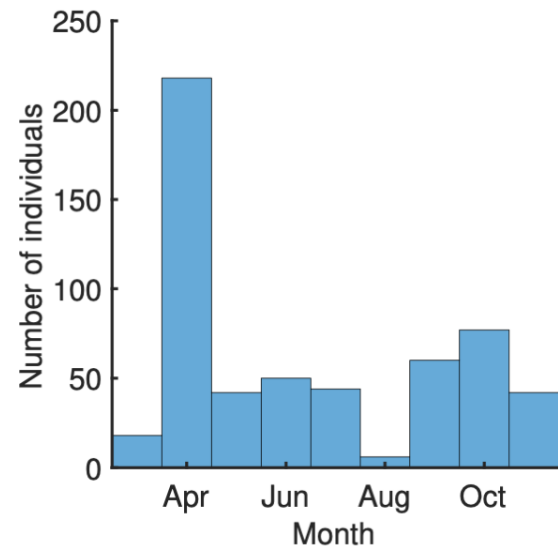
(blue) and mechanistic model (red).

225

A.



B.



226

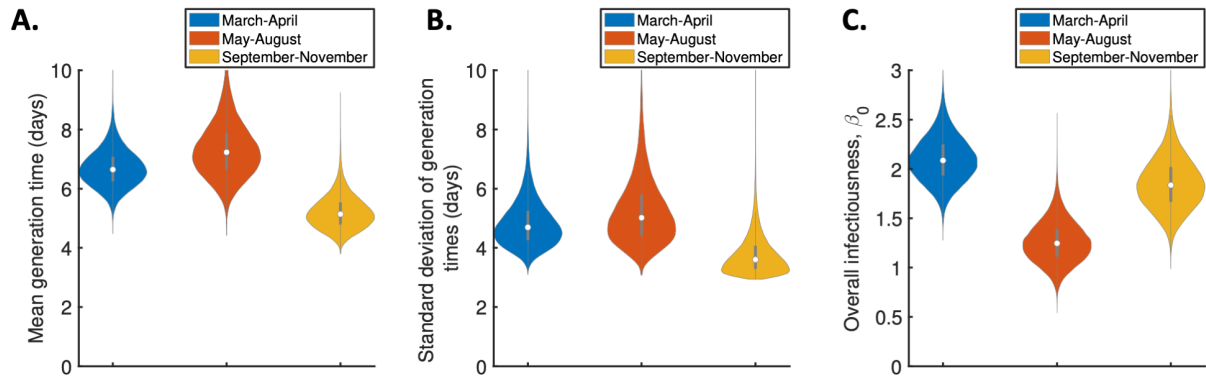
227 **Figure S5. Number of study households and household members by recruitment month.** A. Bars indicating

228 the number of households recruited each month into the study from which we obtained the household

229 transmission data used in our analyses, from March to November 2020. B. Equivalent panel showing the total

230 number of individuals within the households recruited each month.

231



232

233

Figure S6. Temporal changes in the generation time distribution for the mechanistic model. Violin plots

234

indicating posterior distributions of the mean generation time (A), standard deviation of generation times (B),

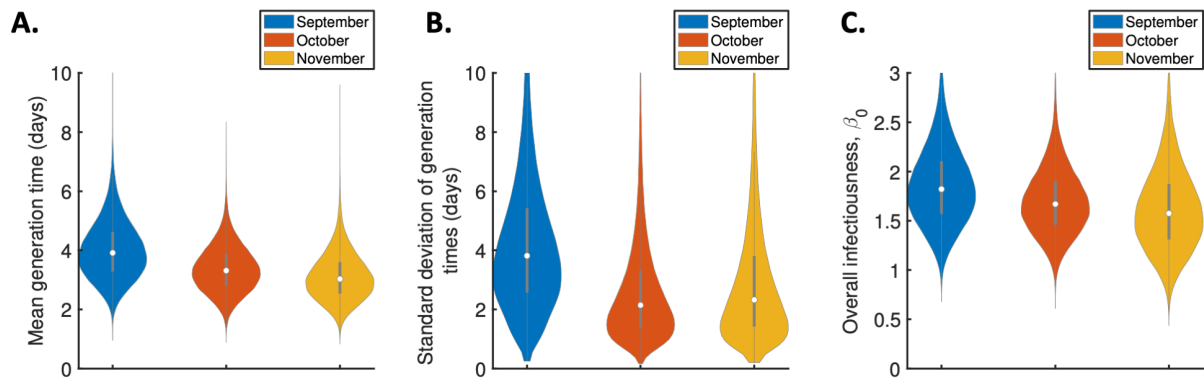
235

and overall infectiousness parameter, β_0 (C), for the mechanistic model fitted to data from March-April (blue),

236

May-August (red) or September-November 2020 (orange).

237



238

239

Figure S7. Monthly changes in the generation time distribution from September-November 2020. Violin

240

plots indicating posterior distributions of the mean generation time (A), standard deviation of generation times

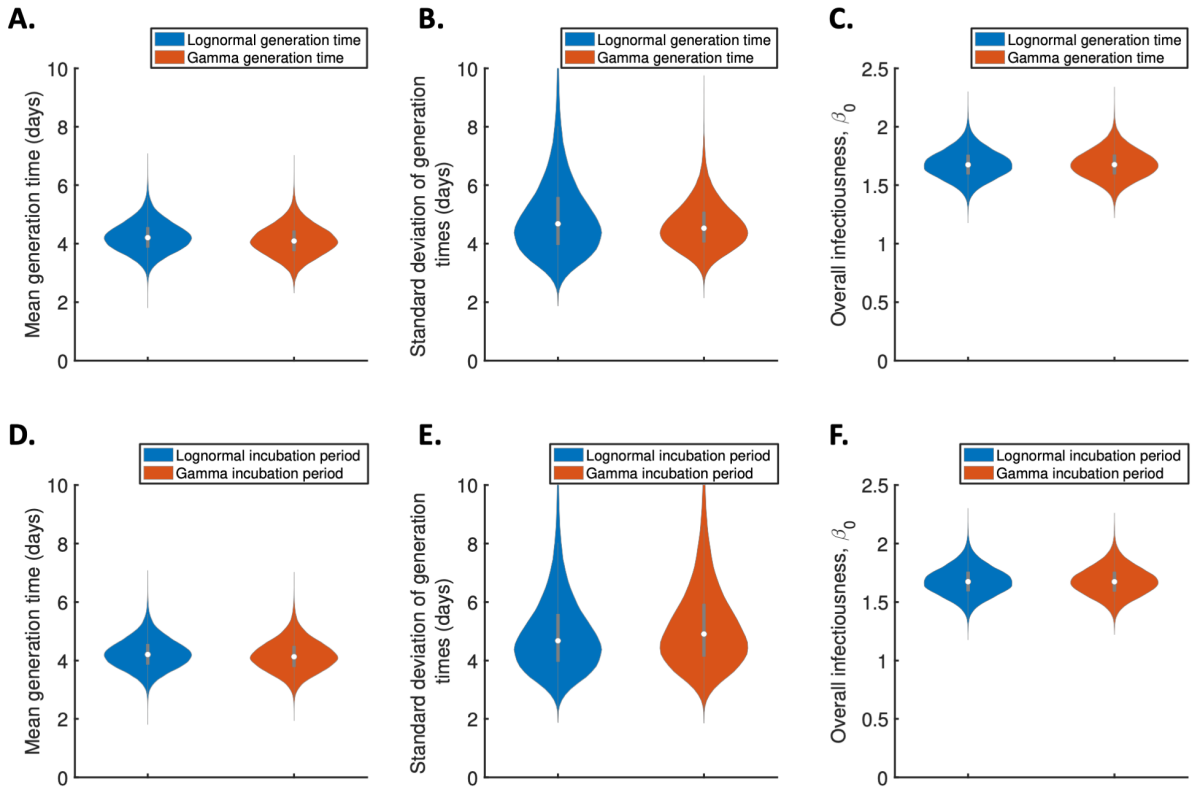
241

(B), and overall infectiousness parameter, β_0 (C), for the independent transmission and symptoms model fitted

242

to data from September (blue), October (red) or November 2020 (orange).

243



244

245

Figure S8. Sensitivity of results to the functional forms of the generation time and incubation period

246

distributions for the independent transmission and symptoms model. A-C. Violin plots indicating posterior

247

distributions of the mean generation time (A), standard deviation of generation times (B), and overall

248

infectiousness parameter, β_0 (C), for the independent transmission and symptoms model, when the generation

249

time was assumed to follow either a lognormal (blue, as in the main text) or a gamma (red) distribution, and the

250

incubation period distribution followed a lognormal distribution (as in the main text). D-F. Equivalent panels to

251

A-C, instead comparing cases where the incubation period was assumed to follow either a lognormal

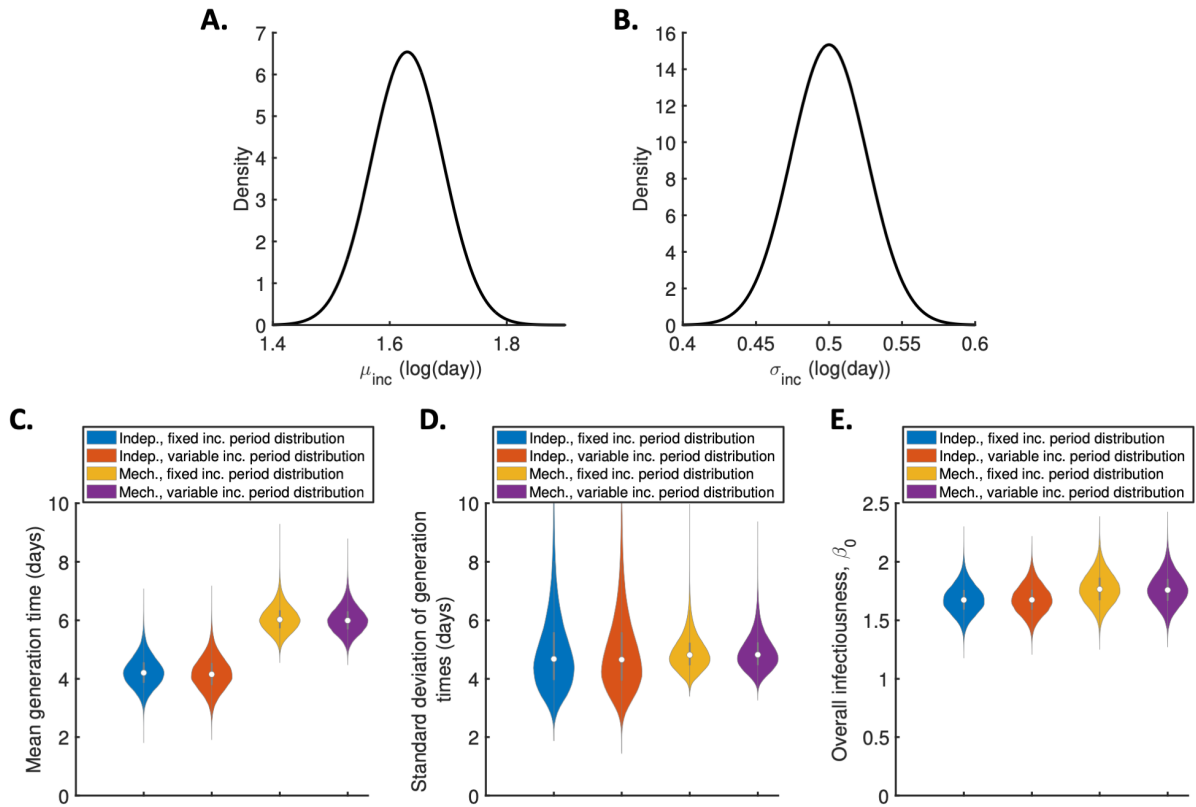
252

distribution (blue, as in the main text) or a gamma distribution with the same mean and standard deviation (red),

253

and the generation time followed a lognormal distribution (as in the main text).

254



255

256 **Figure S9. Sensitivity of the results to the incubation period distribution.** A-B. Uncertainty in the incubation

257 period distribution was accounted for by updating the parameters, μ_{inc} and σ_{inc} , of a lognormal incubation

258 period distribution (these parameters represent the mean and standard deviation of the natural logarithm of the

259 incubation period distribution, respectively) alongside unknown model parameters in the MCMC procedure.

260 Independent normal prior distributions (truncated at zero) consistent with the 95% confidence intervals obtained

261 in [2] were assumed for μ_{inc} (prior mean 1.63 log(day), standard deviation 0.061, 95% CrI 1.51-1.75; panel A)

262 and σ_{inc} (prior mean 0.5 log(day), standard deviation 0.026, 95% CrI 0.45-0.55; panel B). This incubation

263 period was used directly when evaluating the likelihood in the independent transmission and symptoms model.

264 In the mechanistic model, we assumed a gamma distributed incubation period with the same mean and standard

265 deviation as a lognormal distribution with parameters μ_{inc} and σ_{inc} . C-E. Violin plots indicating posterior

266 distributions of the mean generation time (C), standard deviation of generation times (D), and overall

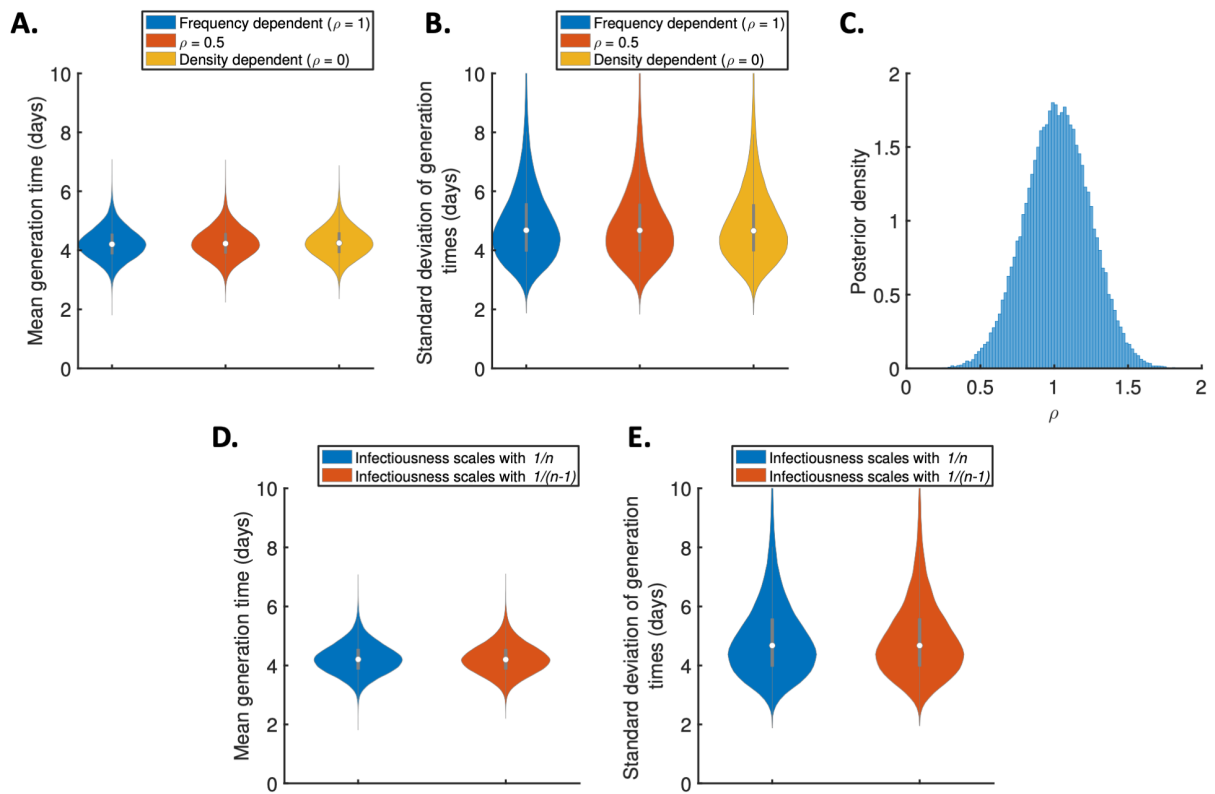
267 infectiousness parameter, β_0 (E), for the independent transmission and symptoms model with either a fixed (as

268 in the main text; blue) or variable (i.e., accounting for uncertainty in μ_{inc} and σ_{inc} as described above; red)

269 incubation period distribution, and for the mechanistic model with a fixed (orange) or variable (purple)

270 incubation period distribution.

271



272

273 **Figure S10. Sensitivity of the results to the dependency of transmission on the household size.** A-B. Violin

274 plots indicating the posterior distributions of the mean generation time (A) and standard deviation of generation

275 times (B), for the independent transmission and symptoms model under different assumptions about the

276 dependency of transmission on the household size. In these panels, infectiousness is assumed to scale with $n^{-\rho}$,

277 where n is the household size, for $\rho = 1$ (frequency-dependent transmission, blue), $\rho = 0.5$ (red), $\rho = 0$

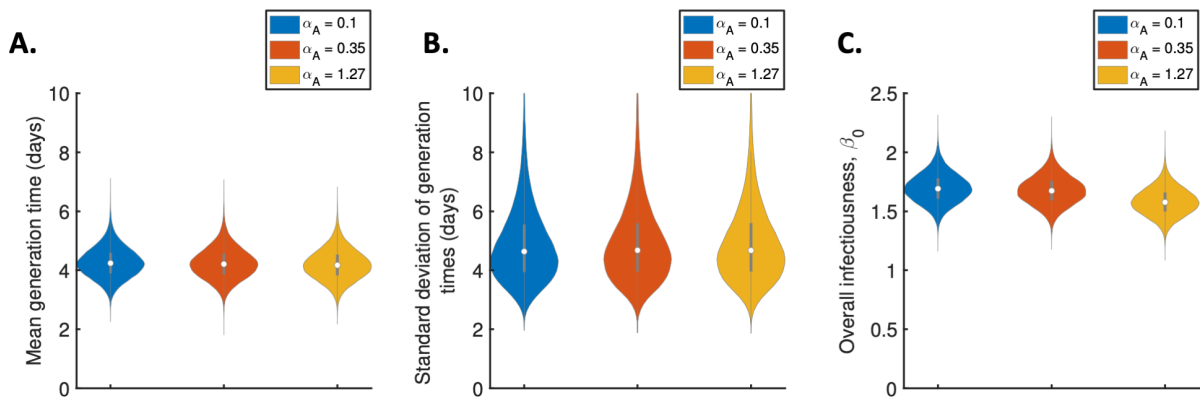
278 (density-dependent transmission, orange). C. Posterior distribution of the dependency, ρ , when it was fitted to

279 the data (alongside other model parameters), assuming a uniform prior for ρ . D-E. Equivalent panels to A-B,

280 when infectiousness was instead assumed to scale with either $1/n$ (blue) or $1/(n-1)$ (red).

281

282



283

284 **Figure S11. Sensitivity of the results to the relative infectiousness of entirely asymptomatic infected hosts.**

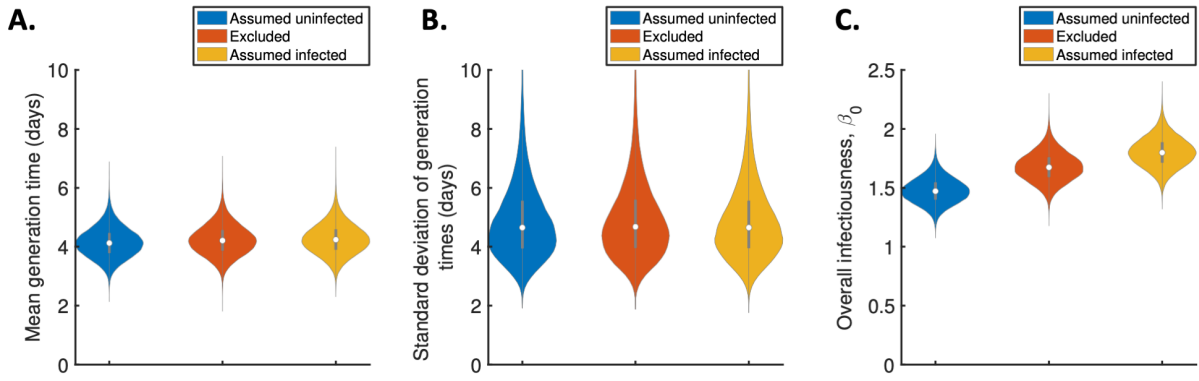
285 Violin plots indicating posterior distributions of the mean generation time (A), standard deviation of generation

286 times (B), and overall infectiousness parameter, β_0 (C), for the independent transmission and symptoms model,

287 when the relative infectiousness of asymptomatic hosts (compared to a host who develops symptoms, at the

288 same time since infection) was $\alpha_A = 0.1$ (blue), $\alpha_A = 0.35$ (red) and $\alpha_A = 1.27$ (orange).

289



290

291

Figure S12. Sensitivity of the results to the exclusion of hosts with unknown infection status. A-C. Violin

292

plots indicating the posterior distributions of the mean generation time (A), standard deviation of generation

293

times (B), and overall infectiousness parameter, β_0 (C), for the independent transmission and symptoms model,

294

when hosts with unknown infection status were assumed all uninfected (blue), excluded (red), or assumed all

295

infected (orange).

296

297 **Supplementary Tables:**

Parameter	Model	Interpretation	Value	Justification
α_A	Both	Relative infectiousness of entirely asymptomatic hosts	0.35	Taken from [3] (other values considered in sensitivity analyses)
Mean of natural logarithm of the incubation period	Independent transmission and symptoms	Parameter of lognormal incubation period distribution	1.63 log(day)	Taken from [2] (uncertainty in this value considered in sensitivity analyses)
Standard deviation of natural logarithm of the incubation period	Independent transmission and symptoms	Parameter of lognormal incubation period distribution	0.50 log(day)	Taken from [2] (uncertainty in this value considered in sensitivity analyses)
k_{inc}	Mechanistic	Shape parameter of gamma incubation period distribution	3.5	Consistent with mean and standard deviation in [2]
$1/\gamma$	Mechanistic	Mean incubation period	5.8 days	Consistent with mean and standard deviation in [2]
k_I	Mechanistic	Shape parameter of (gamma) symptomatic infectious period distribution	1	Assumed

298

299 **Table S1.** Assumed (not fitted) parameter values used for the two models that we considered.

Parameter	Prior	Posterior mean (95% CrI)
Mean generation time	Lognormal(1.6,0.35) [prior median 5.0 days, 95% CI 2.5-9.8 days]	4.2 days (3.3-5.3 days)
Standard deviation of generation times	Lognormal(0.7,0.65) [prior median 2.0 days, 95% CI 0.6-7.2 days]	4.9 days (3.0-8.3 days)
Overall infectiousness parameter, β_0	Lognormal(0.7,0.8) [prior median 2.0, 95% CI 0.4-9.7]	1.7 (1.4-1.9)

300

301 **Table S2.** Fitted parameters in the independent transmission and symptoms model, the prior distributions used,

302 and the posterior means and 95% credible intervals obtained.

303

Parameter	Prior	Posterior mean (95% CrI)
Ratio of mean durations of the latent (<i>E</i>) and incubation (<i>E+P</i>) periods, k_E/k_{inc}	Beta(2.1,2.1) [prior median 0.5, 95% CI 0.1-0.9]	0.2 (0.03-0.5)
Mean symptomatic infectious (<i>I</i>) period, $1/\mu$	Lognormal(1.6,0.8) [prior median 5.0 days, 95% CI 1.0-23.8 days]	5.0 days (3.2-7.5 days)
Ratio of transmission rates in the <i>P</i> and <i>I</i> stages, α_P	Lognormal(0,0.8) [prior median 1.0, 95% CI 0.2-4.8]	3.1 (1.2-6.9)
Overall infectiousness parameter, β_0	Lognormal(0.7,0.8) [prior median 2.0, 95% CI 0.4-9.7]	1.8 (1.5-2.1)

304

305 **Table S3.** Fitted parameters in the mechanistic model, the prior distributions used, and the posterior means and

306 95% credible intervals obtained.

307

308 **References:**

- 309 [1] Hart WS, Maini PK, Thompson RN. High infectiousness immediately before COVID-
310 19 symptom onset highlights the importance of continued contact tracing. *eLife* 2021;
311 10: e65534.
- 312 [2] McAloon C, Collins Á, Hunt K, et al. Incubation period of COVID-19: a rapid
313 systematic review and meta-analysis of observational research. *BMJ Open* 2020; 10:
314 e039652.
- 315 [3] Buitrago-Garcia D, Egli-Gany D, Counotte MJ, et al. Occurrence and transmission
316 potential of asymptomatic and presymptomatic SARS-CoV-2 infections: A living
317 systematic review and meta-analysis. *PLOS Med* 2020; 17: e1003346.

318