

A Randomized Placebo-Controlled Trial of Sarilumab in Hospitalized Patients with COVID-19

SUPPLEMENTARY APPENDIX

Table of Contents

Study Sites and Investigators.....	3
Regeneron Sarilumab-COVID-19 Study Team	5
Supplementary Methods	6
Inclusion and Exclusion Criteria.....	6
Dose Preparation.....	10
Definitions of Disease Severity Strata	11
Study Drug Administration and Data Collection	12
Summary of Key Protocol Amendments and Study Adaptations	13
Clinical Status Scale	15
Safety End Points	16
Study Oversight	17
Statistical Methods	18
Human Genetic Studies Methods	24
Phase 2 Study Results	25
Phase 2: Flow Diagram	25
Phase 2: Demographics and Baseline Characteristics (ITT Population)	26
Phase 2: Primary Efficacy End Point (mITT population).....	27
Phase 2: Summary of Selected Secondary End Points (ITT Population)	28
Phase 2: Overview of Adverse Events (Safety Population)	30
Phase 2: Treatment-Emergent Serious Adverse Events and Adverse Events of Special Interest Occurring in ≥5% of Patients in Any Group (Safety Population)	31
Phase 3 (Cohort 2) Study Results	32
Phase 3 (Cohort 2): Flow Diagram	32
Phase 3 (Cohort 2): Demographics and Baseline Characteristics (ITT Population) ..	33
Phase 3 (Cohort 2): Overview of Adverse Events (Safety Population).....	34
Phase 3 (Cohort 2): Treatment-Emergent Serious Adverse Events and Adverse Events of Special Interest Occurring in ≥5% of Patients in Any Group (Safety Population)	35

Phase 3 (Cohort 3) Study Results	37
Phase 3 (Cohort 3): Flow Diagram	37
Phase 3 (Cohort 3): Demographics and Baseline Characteristics (ITT Population) ..	38
Phase 3 (Cohort 3): Overview of Adverse Events (Safety Population)	39
Phase 3 (Cohort 3): Treatment-Emergent Serious Adverse Events and Adverse Events of Special Interest Occurring in $\geq 5\%$ of Patients in Any Group (Safety Population)	40
Supplementary Figures	41
Figure S1. Schematic Overview of the Study Design (Phase 2 and Phase 3).....	41
Figure S2. Phase 3 (Cohort 1): Flow Diagram.....	42
Figure S3. Phase 3 (Cohort 1): CRP Over Time in Critical Patients (Safety Population)	43
Supplementary Tables	45
Table S1. Summary of Analysis Populations by Disease Severity Strata	45
Table S2. Phase 3 (Cohort 1) – Severe and MSOD Strata: Demographics and Baseline Characteristics (EITT Population)	47
Table S3. Integrated Phase 2/3 Population: Demographics and Baseline Characteristics (ITT Population)	49
Table S4. Phase 3 (Cohort 1): Summary of Primary and Selected Secondary Efficacy End Points in Critical Strata	50
Table S5. Phase 3 (Cohort 1): Summary of Primary and Selected Secondary Efficacy End Points in Severe and MSOD Strata	52
Table S6. Phase 3 (Cohort 1) – Critical Stratum: Overview of Adverse Events (Safety Population)	54
Table S7. Phase 3 (Cohort 1) – Severe and MSOD Strata: Overview of Adverse Events (Safety Population)	56
Table S8. Phase 3 (Cohort 1) – Severe and MSOD Strata: Treatment-Emergent Serious Adverse Events and Adverse Events of Special Interest Occurring in $\geq 5\%$ of Patients in Any Group (Safety Population)	57
Table S9. Association Between the <i>IL6R</i> Shedding Variant rs2228145:C and COVID- 19 Outcomes	58
Appendix References	59

Study Sites and Investigators

Name of Principal Investigator	Site Name, State
Judith Aberg	Mt. Sinai – Morningside, NY Mt. Sinai – West, NY Mt. Sinai – Beth Israel, NY Mt. Sinai – Icahn School of Medicine, NY
Timothy Albertson	University of California Davis, CA
Danny Branstetter	Wellstar Kennestone, GA
Mark Brantly	University of Florida, FL
Daniel Brotman	Johns Hopkins University, MD
Samuel M. Brown	Intermountain Medical Center, UT
Thomas Campbell	University of Colorado, Denver, CO
Steven Chang	UCLA Division of Pulmonary and Critical Care, CA
Donald Chen	Westchester Medical Center, NY
Geoffrey Chupp	Yale New Haven Hospital, CT
Gerard J. Criner	Lewis Katz School of Medicine at Temple University, PA
Marjolein de Wit	Virginia Commonwealth, VA
George Diaz	Providence – Everett Regional Medical Center, WA
Svetolik Djurkovic	Inova Fairfax Medical Campus, VA
Christian Engell	Newark Beth Israel Medical Center, NJ
Jay Finigan	National Jewish Health – Denver, CO
Bettina Fries	Stony Brook University, NY
Dahlene Fusco	Tulane, LA
Marshall Glesby	Cornell Weill Medical Center, NY
Michelle Gong	Montefiore – Weiler Hospital, NY Montefiore – Moses, NY
Robert Gottlieb	Baylor University Medical Center, TX
Kevin Gregg	University of Michigan, MI
Negin Hajizadeh	Northwell Health – Lenox Hill, NY Northwell Health, Northshore University Hospital, Manhasset, NY Northwell Health, Long Island Jewish Hospital, New Hyde Park, NY
Robert Hallowell	Beth Israel Deaconess Medical Center, MA
Teresa Hammond	Providence – St. Johns, CA
Akram Khan	Oregon Health & Science University, OR
Kami Kim	University of South Florida, FL
Andreas Klein	Tufts Medical Center, MA
Jerry Krishnan	University of Illinois at Chicago, IL
Yu Shia Lin	Maimonides Medical Center, NY
Edward Liu	Hackensack Meridian School of Medicine and Jersey Shore University Medical Center, NJ
George Marshall Lyon	Emory University Hospital, GA
Anuj Malik	Ascension St. John Hospital, OK
Jain Mamta	UT South Western, TX
Michael K. Mansour	Massachusetts General Hospital, MA
Vidya Menon	Lincoln Medical Center, NY
Amay Parikh	Florida Hospital, Orlando, AdventHealth, FL
William Park	UW Medicine/Valley Medical Center, WA
Igor Puzanov	Roswell Park – Buffalo, NY
Farbod Raiszadeh	Harlem Hospital, NY
Raymond Razonable	Mayo Clinic, MN

Fariborz Rezai	Saint Barnabas Medical Center – RWJBarnabas Health, NJ
Ruxana Sadikot	Atlanta VA Medical Center, GA
Suraj Sagar	Holy Name Medical Center, NJ
Carlos Salama	Elmhurst Hospital, NY
John Sensakovic	Hackensack Meridian School of Medicine and JFK Hospital, NJ
Paul Simonelli	Geisinger – Medical Center, PA Geisinger – Community Medical Center, PA Geisinger – Wyoming Valley, PA
Magdalena Sobieszczyk	Columbia University, NY
Steven Sperber	Hackensack Meridian School of Medicine and Hackensack University Medical Center – Hackensack, NJ
David Stein	Jacobi Medical Center, NY
Daniel Sterman	New York University, NY
Stephen Walsh	Brigham and Women’s Hospital, MA
Jason Wells	Providence Health and Services, Portland, OR
Eric Whitman	Atlantic Center for Research, NJ
Glenn Wortmann	MedStar (Washington Hospital Center), Washington, DC
Richard G. Wunderink	Northwestern University, IL
Daniel Kett	University of Miami, UMMG Infection Control, FL

Regeneron Sarilumab-COVID-19 Study Team

Moetaz Albizem, Gayatri Anand, Dhanalakshmi Barron, Georgia Bellingham, Alison Brown, Colby Burk, Wilson Caldwell, Michael N. Cantor, S. Balachandra Dass, John Davis, Ajla Dupljak, Haitao Gao, Evelyn Gasparino, Lori Geisler, Ruchin Gorawala, Ingeborg Heirman, Olga Herrera, Matthew Houghton, Susan Irvin, Denise Kennedy, Yasmin Khan, Carol Lee, Kelly Lewis-Amezcuca, Qin Li, Leah Lipsich, Adnan Mahmood, Marco Mancini, Jutta Miller, Michael Partridge, Christina Perry, Valancia Reddick, Arsalan Shabbir, Nirav Shah, Kenneth Turner, Dana Wolken, Joseph Wolken, Sonia Yanes, and Jeannie Yo.

Supplementary Methods

Inclusion and Exclusion Criteria

Inclusion Criteria

A patient must meet the following criteria to be eligible for inclusion in the study:

- 1) Male or female adult ≥ 18 years of age at time of enrollment
- 2) Hospitalized (or documentation of a plan to admit to the hospital if the patient is in an emergency department) with illness of any duration with evidence of pneumonia by chest radiograph, chest computed tomography or chest auscultation (rales, crackles), requires supplemental oxygen and/or assisted ventilation and meets 1 of the following criteria:

Phase 2 and Phase 3 Cohort 1: must meet at least 1 of the following at baseline (patients meeting more than one criterion will be categorized in the most severely affected category):

- **Severe disease**
 - Requires supplemental oxygen administration by nasal cannula, simple face mask, or other similar oxygen delivery device (i.e., above pre-COVID-19 baseline requirement, if any, by the patient)
- **Critical disease**
 - Requires supplemental oxygen delivered by non-rebreather mask or high-flow nasal cannula, OR
 - Use of invasive or non-invasive ventilation, OR
 - Requiring treatment in an intensive care unit

- **Multi-system organ dysfunction**

- Multi-system organ dysfunction: use of vasopressors, extracorporeal life support, or renal replacement therapy

Note: patients receiving vasopressors for reasons other than circulatory shock (e.g., related to sedation or mechanical ventilation) may be randomized into the critical stratum

- **Immunocompromised**

- Immunocompromised patients (or on immunosuppressant treatments)

1. Laboratory-confirmed SARS-CoV-2 infection as determined by a polymerase chain reaction (PCR) result from any specimen (or other commercial or public health assay) within 2 weeks prior to randomization and no alternative explanation for current clinical condition
2. Willing and/or able to comply with study-related procedures/assessments
3. Provide informed consent signed by study patient or legally acceptable representative

Exclusion Criteria

A patient who meets any of the following criteria will be excluded from the study:

1. In the opinion of the investigator, not expected to survive for more than 48 hours from screening

2. Presence of any of the following abnormal laboratory values at screening: absolute neutrophil count $<2000 \text{ mm}^3$, aspartate aminotransferase or alanine aminotransferase $>5x$ upper limit of normal, platelets $<50,000$ per mm^3
3. Treatment with anti-IL-6, anti-IL-6R antagonists, or with Janus kinase inhibitors (JAKi) in the past 30 days or plans to receive during the study period
4. Current treatment with the simultaneous combination of leflunomide and methotrexate
5. Exclusion criteria related to tuberculosis (TB)
 - a. Known active TB or a history of incompletely treated TB
 - b. Suspected or known extrapulmonary TB
6. Patients with suspected or known active systemic bacterial or fungal infections
Note: Patients with a history of positive bacterial or fungal cultures but on enrollment do not have suspected or known active systemic bacterial or fungal infections may be enrolled
7. Participation in a double-blind clinical research study evaluating an investigational product or therapy within 3 months and less than 5 half-lives of investigational product prior to the screening visit
Exception: The use of remdesivir, hydroxychloroquine, or other treatments being used for COVID-19 treatments in the context of an open-label study, emergency use authorization, compassionate use protocol, or open-label use is permitted
8. Any physical examination findings, and/or history of any illness, concomitant medications, or recent live vaccines that, in the opinion of the study investigator,

might confound the results of the study or pose an additional risk to the patient by their participation in the study

9. Known systemic hypersensitivity to sarilumab or the excipients of the drug product

Dose Preparation

Sarilumab (Kevzara®) was provided in a 200 mg pre-filled syringe containing 175 mg/mL of active drug and was administered intravenously (IV) over 1-hour via bags containing 100 mL of 0.9% sodium chloride solution, followed by flush with 0.9% sodium chloride for an additional 15 minutes.

The infusion was stored at room temperature prior to administration and was administered within 4 hours of preparation. Infusion through either central or peripheral lines was allowed. Direct mixing of sarilumab with other drug(s) was prohibited. When it was needed to administer sarilumab concomitantly with other drug(s) (i.e., if a common IV infusion set or central catheter [central line] was used), appropriate steps (e.g., flush before and after administration of sarilumab) was recommended to prevent sarilumab from mixing with other drug(s) while in the infusion set or central catheter.

Definitions of Disease Severity Strata

Severe stratum was defined as patients receiving low-flow supplemental oxygen.

Critical stratum was defined as requiring supplemental oxygen by nonrebreather mask or high-flow nasal device, noninvasive ventilation, invasive mechanical ventilation (MV), or management in an intensive care unit (ICU). Multi-system organ dysfunction (MSOD) stratum was defined as use of vasopressors, extracorporeal life support, or renal replacement therapy.

Study Drug Administration and Data Collection

Sarilumab 200 mg, 400 mg, or normal saline (used as placebo for sarilumab) were administered intravenously over 1 hour. An unmasked pharmacist was responsible for preparation of all study interventions. Patients, care providers, outcome assessors, and investigators remained masked to assigned intervention throughout the study. Study drug was administered on day 1 (baseline). Following protocol amendment 4 (April 6, 2020), patients were eligible to be re-dosed for clinical worsening at 24 hours and weekly for up to four doses. Data were collected daily from baseline until day 29 or hospital discharge, and at the end of the study (day 60).

Summary of Key Protocol Amendments and Study Adaptations

Key amendments to the study in the course of adapting the phase 3 design based on phase 2 results.

Protocol Amendment (Date)	Key Study Design Update
Initial Study Design (March 15, 2020)	<ul style="list-style-type: none"> • Phase 2/3 study. Patients randomized 2:2:1 to sarilumab 400 mg IV, sarilumab 200 mg IV, or placebo • Phase 2 primary end point: time to resolution of fever
Protocol Amendment 1 (March 19, 2020)	<ul style="list-style-type: none"> • Aligned safety objectives and end points with adverse events of special interest • Updated from a 6-point clinical status scale to a 7-point clinical status scale • Updated inclusion criteria to accept a positive PCR result within 2 weeks of randomization • Nasopharyngeal swab added as an acceptable method to collect virus based on emerging guidelines for SARS-CoV-2 testing
Protocol Amendment 2	<ul style="list-style-type: none"> • Withdrawn and not implemented
Protocol Amendment 3 (March 28, 2020)	<ul style="list-style-type: none"> • Phase 2 primary end point changed to percent reduction in C-reactive protein (CRP) • Reduced number of patients for phase 2 • Removed the requirement for a documented fever at randomization • Removed exclusion criteria that previously prohibited patients who received immunosuppressive therapies from participating in this study
Protocol Amendment 4 (April 6, 2020)	<ul style="list-style-type: none"> • Re-dosing permitted after 24 hours of dosing if no clinical response is observed • Phase 2 sample size increased • Removal of exclusion for immunocompromised patients
Protocol Amendment 5 (May 9, 2020)	<ul style="list-style-type: none"> • Based on feedback from the Independent Data Monitoring Committee (IDMC), patients will no longer receive sarilumab 200 mg or be eligible for repeat dosing of 200 mg, and patients in the severe and Multi-System Organ Dysfunction (MSOD) stratum will no longer receive sarilumab 400 mg or placebo

	<ul style="list-style-type: none"> • Cohort 1 of phase 3 will complete enrollment after ~170 patients on a ventilator at baseline have been randomized in the critical stratum. Cohort 2 of phase 3, in which patients are randomized to receive sarilumab 800 mg or placebo, will start enrolling patients upon the completion of enrollment in cohort 1.
<p>Protocol Amendment 6 (May 16, 2020)</p>	<p>Based on regulatory authority feedback:</p> <ul style="list-style-type: none"> • As part of the phase 3 adaptation, two additional independently powered cohorts were added to evaluate sarilumab 800 mg versus placebo in patients on mechanical ventilation at baseline (cohort 2) and in patients not on mechanical ventilation but on high-intensity oxygen therapy without mechanical ventilation at baseline (cohort 3) • Key secondary end point of all-cause mortality changed from • Day 60 to day 29
<p>Protocol Amendment 7 (June 11, 2020)</p>	<p>Based on feedback from the IDMC, the following changes were made to the protocol:</p> <ul style="list-style-type: none"> • In phase 3 cohort 1, only patients receiving mechanical ventilation will be re-dosed • In phase 3 cohort 2, patients will only receive study drug while receiving mechanical ventilation • In phase 3 cohort 3, no additional patients will be enrolled and patients on study will not be re-dosed

Clinical Status Scale

The 7-point ordinal scale is an assessment of the clinical status. The scale is as follows:

- 1, Death
- 2, Hospitalized, requiring invasive mechanical ventilation or extracorporeal membrane oxygenation
- 3, Hospitalized, requiring non-invasive ventilation or high-flow oxygen devices
- 4, Hospitalized, requiring supplemental oxygen
- 5, Hospitalized, not requiring supplemental oxygen – requiring ongoing medical care (COVID-19–related or otherwise)
- 6, Hospitalized, not requiring supplemental oxygen – no longer requires ongoing medical care
- 7, Not hospitalized

Safety End Points

Safety outcomes included treatment emergent serious adverse events (SAEs) and the following adverse events of special interest (AESIs): grade 4 neutropenia (absolute neutrophil count $<500/\text{mm}^3$); confirmed invasive bacterial or fungal infections; elevations in alanine aminotransferase (ALT) or aspartate aminotransferase (AST) $\geq 3\text{X}$ ULN (for patients with normal baseline) or $>3\text{X}$ ULN and at least 2-fold increase from baseline values (for patients with abnormal baseline); and grade 2 or higher hypersensitivity or infusion-related reactions.

Study Oversight

The protocol was developed by the sponsor (Regeneron Pharmaceuticals Inc.). Data were collected by the study investigators and analyzed by the sponsor. The local institutional review board or ethics committee at each study center oversaw trial conduct. All patients provided written informed consent before participating in the trial. The trial was overseen by an IDMC.

Ethics declaration

Ethics approval was obtained from the following ethics review boards: WCG IRB, Puyallup, WA (IRB00000533); Oregon Health & Science University, Portland, OR (MOD00027616); Institutional Review Board University of Florida, Gainesville, FL (IRB202000779); Columbia University, Human Research Protection Office and IRBs, New York, NY (IRB-AAAS9615); Johns Hopkins Medicine, Office of Human Subjects Research, IRB, Baltimore, MD (IRB00246576/CIR00058074); NYU School Of Medicine, New York, NY (I20-00351_MOD03); Northwestern University IRB, Chicago, IL (STU00212239-MOD0012); Westchester Medical Center, NY Medical College, Office of Research Administration, Valhalla, NY (IRBReg#00000428); Portland Health and Services IRB Providence – St. Johns, Portland, OR (MOD2020001024); Cornell Weill Medicine IRB, New York, NY (IRB00009419); Providence St. Joseph IRB, Renton, WA (MOD2020001029); Providence Health and Services IRB, Portland, OR (MOD2020000519); Ascension St. John Hospital, Tulsa, OK (IRB#00001980); Geisinger IRB, Danville, PA (IRB#0008345).

Statistical Methods

All analyses and tabulations were performed either using the Statistical Analysis Software (SAS) Version 9.4 or R language.

Adaptive Phase 2/3 Study Design

This randomized controlled clinical trial in hospitalized patients with COVID-19 across various disease severity stages followed a phase 2/3 adaptive design. Randomization was stratified by disease severity: 1) severe, 2) critical, 3) multi-system organ dysfunction (MSOD), and 4) immunocompromised, and by use of systemic corticosteroids. Due to the novel nature of COVID-19, efficacy end points at the time of study design were not well established. The phase 2/3 adaptive design of the study allowed for identification of early signs of clinical efficacy in the phase 2 data (e.g., reduction in C-reactive protein, and estimation of effects on clinical status measured on an ordinal scale). Interim phase 2 data analysis allowed adaptation of the phase 3 study design, including: 1) selection of clinical outcome end points in phase 3 (e.g., well-defined end points based on clinical status assessment of patients), 2) confirmation of the phase 3 population, 3) evaluation of further doses of sarilumab and 4) sample size adjustment for phase 3.

Although enrollment in the phase 2 and phase 3 portions of the study was seamless, the analyses of phase 2 and phase 3 portions of the study were kept separate. Each phase of the study was powered for separate objectives. No patients from phase 2 were included in the analysis of phase 3.

Sample Size Calculations in Phase 3 Portion of the Study

Based on the phase 2 interim data which included ~460 patients randomized (2:2:1) and stratified by disease severity and use of systemic corticosteroids manner to sarilumab 400 mg IV, sarilumab 200 mg IV, or placebo. Based on IDMC recommendations, the phase 3 design was adapted to allow continued enrollment of patients in the critical disease severity stratum only with the sarilumab 400-mg dose and placebo groups. Enrollment in other disease severity categories and in the sarilumab 200-mg group was halted.

In the phase 2 portion of the study, in a subgroup analysis of the critical stratum based on being on a mechanical ventilator at baseline, in the mechanical ventilator group, approximately 17% of patients treated with placebo (i.e., standard of care) and 57% of patients treated with sarilumab 400 mg (on top of standard of care) achieved ≥ 1 -point improvement by day 22. Therefore, the sample size for phase 3 cohort 1 was recalculated using the chosen phase 2 end point of the proportion of patients with ≥ 1 -point improvement in clinical status on the ordinal scale at day 22 in patients in the critical stratum who were on mechanical ventilation at baseline. With a 2:1 randomization ratio (sarilumab 400 mg IV:placebo), an effect size the same as that observed in phase 2, and 170 patients in the critical stratum on mechanical ventilation, the comparison between sarilumab 400 mg IV (n~113) and placebo (n~57) would have >99% power. Assuming the rate on placebo is 17% and the rate on sarilumab 400 mg is 37% (i.e., a difference in proportions is one-half that observed in phase 2), then the

sample size of 170 would provide approximately 80% power to detect this reduced difference. These calculations assumed $\alpha=0.045$, allowing for an interim analysis at the 0.005 level. Therefore, this study planned to enroll approximately 450 critical patients to have approximately 170 patients within the critical stratum who are on mechanical ventilation and randomized to 400 mg IV or placebo.

Note that the total number of patients enrolled in phase 3 is larger than that to account for the patients who had been randomized to the severe stratum, MSOD stratum, or to the 200 mg IV dose group before the IDMC decision to discontinue further enrollment into those strata and dose groups. In addition, phase 3 adaptations also included two new cohorts of patients randomized 1:1 to sarilumab 800 mg IV (higher dose) or placebo, namely, cohort 2 consisting of patients who were on mechanical ventilation at baseline and cohort 3 consisting of patients not on mechanical ventilation but on high intensity oxygen therapy at baseline. These cohorts did not begin enrollment until after cohort 1 enrollment was completed and are not included in this analysis.

Analysis Populations

1) Intention-to-Treat (ITT) Population

The intention-to-treat (ITT) population included all randomized patients who received at least one dose of the study drug. Analysis of the ITT population was done according to the initial treatment assigned to the patient (as randomized).

The ITT population was the primary analysis population for phase 3. For phase 3, the specific primary population was the subset of patients in the critical stratum who were

on mechanical ventilation (without extracorporeal membrane oxygenation [ECMO]) at baseline and randomized to sarilumab 400 mg or placebo. Demographics, baseline characteristics, and patient disposition was summarized in the ITT population.

2) Safety Population

The safety population (SAF) included all randomized patients who received at least one dose of the study drug. Analysis of the SAF population was done according to the treatment received (as treated). Determination of “as treated” will be based on the actual study drug received on day 1. The SAF population was used for analysis of all safety data, treatment exposure, medical history, and medication use.

Analysis of Primary Efficacy Variable and Secondary Efficacy Variables

Post adaptations to the phase 3 study design, the main focus of the efficacy analysis was pairwise comparison between sarilumab 400 mg and placebo in cohort 1 critical patients with mechanical ventilation without ECMO at baseline, in terms of the efficacy variable of proportion of patients with ≥ 1 -point improvement in clinical status from baseline to day 22 using the 7-point ordinal scale. The primary analysis population was ITT.

Hypothesis test of superiority of sarilumab (400 mg) versus placebo was planned to be done using the stratified Cochran-Mantel-Haenszel (CMH) test for two proportions. Stratification factor was use of steroids at baseline (yes/no). Estimation of the treatment effect was provided as differences in proportions and confidence intervals calculated

using the strata-adjusted confidence intervals from CMH method. P values and confidence intervals were reported with overall Type 1 error controlled at 0.05 (2-sided).

The statistical methods used for the key secondary efficacy variables were the same as the methods described for the primary efficacy variable.

These key secondary end points for the phase 3 cohort 1 portion of the study were to be tested sequentially in a hierarchical manner, while preserving the overall significance level at 0.05 (2-sided).

1. Proportion of patients with at least 1-point improvement in clinical status assessment from baseline to day 22 in patients with critical COVID-19
2. Proportion of patients who recover (discharged, or alive without supplemental oxygen use or at pre-COVID oxygen use) by day 22 in patients with critical COVID-19 receiving mechanical ventilation without ECMO at baseline
3. Proportion of patients who die through day 29 in patients with critical COVID-19 receiving mechanical ventilation without ECMO at baseline
4. Proportion of patients who die through day 29 in patients with critical COVID-19

Other secondary efficacy variables such as time-to-event end points were summarized with Kaplan-Meier estimates of medians and 95% confidence intervals on medians.

Confidence intervals for hazard ratios comparing treatment groups were to be reported using Cox proportional hazards model with stratification factors mentioned earlier.

Cumulative incidence rates were plotted with comparisons between groups to be descriptively tested using log-rank test.

Adjustment for Multiple Comparisons

Analysis of phase 2 data was strictly separately done from phase 3. No patients from phase 2 were used in the phase 3 analyses. Multiplicity control in phase 3 for testing primary and key secondary end points using a hierarchical testing order was pre-specified in the Statistical Analysis Plan. Overall type 1 error was controlled within each cohort at 0.05 (2-sided) level.

Human Genetic Studies Methods

Studies

We report association analyses from the COVID-19 Host Genetics Initiative (January 18, 2021, release, downloaded from <https://www.covid19hg.org/results/>).¹

Definition of COVID-19 Outcomes

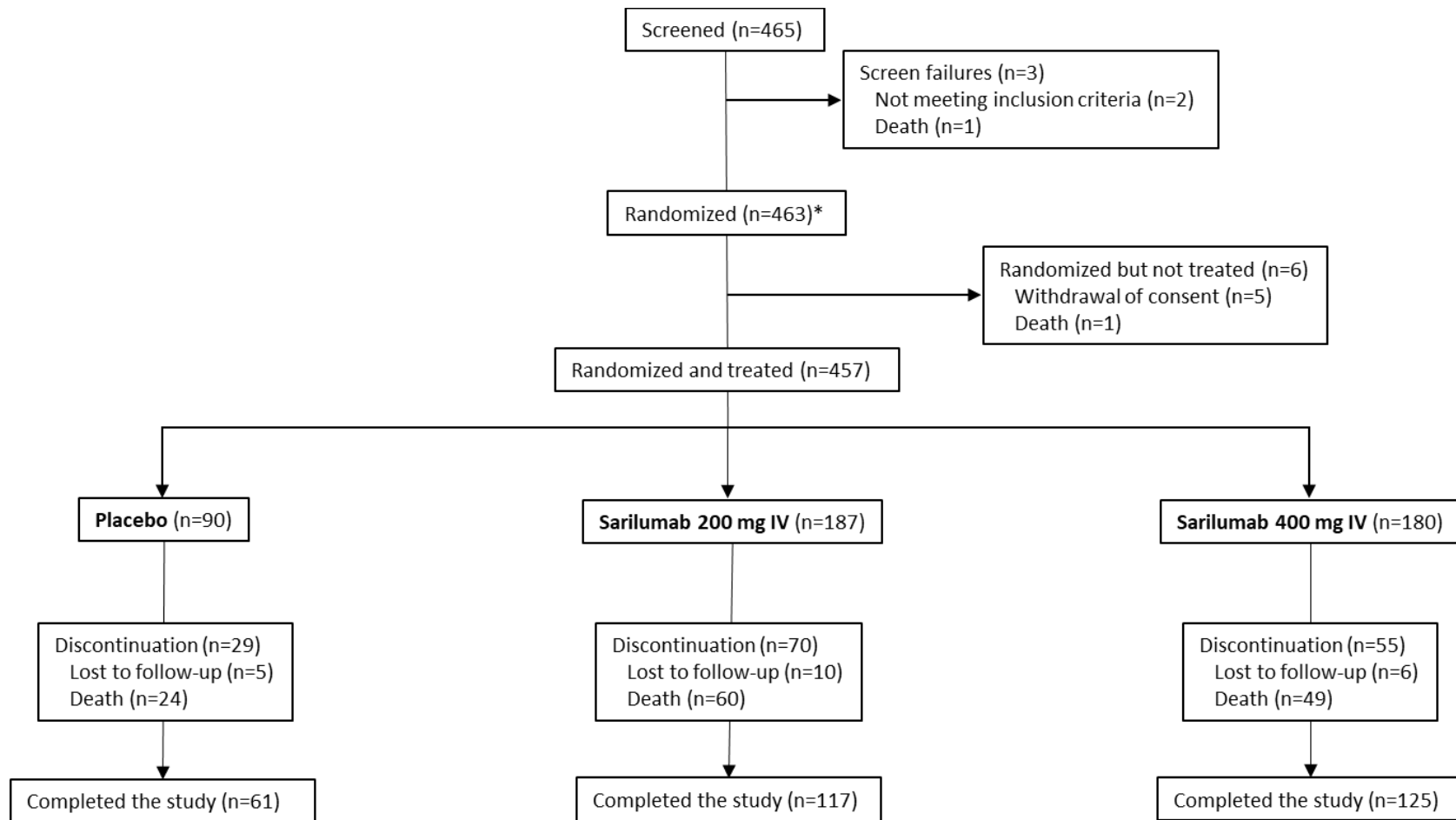
Risk of hospitalization was analyzed among RNA polymerase chain reaction (PCR)–confirmed SARS-CoV-2 positive cases (N=12,888) and controls who were either PCR-negative or not tested (N=1,295,966 population controls). Risk of severe COVID-19 was analyzed among individuals with a PCR-confirmed SARS-CoV-2 infection and record of mechanical ventilation or death due to COVID-19 (N=5,780) and population controls (N=1,115,203).

Association Analyses

The association between each phenotype and imputed variants was performed as described (<https://www.covid19hg.org/results/r5/>) with SAIGE v0.8² separately for each study and ancestry, with age, age², sex, age-by-sex, and 10 ancestry-informative principal components included as covariates. Association results were combined across studies and ancestries with an inverse-variance meta-analysis using METAL.³

Phase 2 Study Results

Phase 2: Flow Diagram



*Includes 1 screen failure that was randomized.

Phase 2: Demographics and Baseline Characteristics (ITT Population)*

	Severe Patients				Critical Patients				MSOD/Immunocompromised Patients			
	Placebo Group (N=25)	Sarilumab 200 mg IV Group (N=50)	Sarilumab 400 mg IV Group (N=51)	Total (N=126)	Placebo Group (N=44)	Sarilumab 200 mg IV Group (N=94)	Sarilumab 400 mg IV Group (N=88)	Total (N=226)	Placebo Group (N=21)	Sarilumab 200 mg IV Group (N=43)	Sarilumab 400 mg IV Group (N=41)	Total (N=105)
Median age— years (Q1:Q3)	61.0 (55.0:68.0)	56.5 (42.0:69.0)	55.0 (43.0:68.0)	57.0 (46.0:68.0)	59.0 (48.5:67.5)	61.0 (50.0:66.0)	54.5 (43.5:65.5)	58.5 (46.0:66.0)	71.0 (53.0:73.0)	60.0 (48.0:66.0)	64.0 (49.0:70.0)	61.0 (50.0:72.0)
Male sex — no. (%)	15 (60.0)	34 (68.0)	38 (74.5)	87 (69.0)	37 (84.1)	62 (66.0)	70 (79.5)	169 (74.8)	17 (81.0)	28 (65.1)	30 (73.2)	75 (71.4)
Ethnicity — no. (%)												
Hispanic or Latino	4 (16.0)	13 (26.0)	9 (17.6)	26 (20.6)	7 (15.9)	29 (30.9)	20 (22.7)	56 (24.8)	5 (23.8)	12 (27.9)	11 (26.8)	28 (26.7)
Not Hispanic or Latino	16 (64.0)	29 (58.0)	34 (66.7)	79 (62.7)	30 (68.2)	44 (46.8)	49 (55.7)	123 (54.4)	13 (61.9)	25 (58.1)	22 (53.7)	60 (57.1)
Not reported	4 (16.0)	3 (6.0)	7 (13.7)	14 (11.1)	4 (9.1)	8 (8.5)	8 (9.1)	20 (8.8)	2 (9.5)	2 (4.7)	2 (4.9)	6 (5.7)
Unknown	1 (4.0)	5 (10.0)	1 (2.0)	7 (5.6)	3 (6.8)	13 (13.8)	11 (12.5)	27 (11.9)	1 (4.8)	4 (9.3)	6 (14.6)	11 (10.5)
Race — no. (%)												
White	15 (60.0)	22 (44.0)	22 (43.1)	59 (46.8)	16 (36.4)	37 (39.4)	29 (33.0)	82 (36.3)	8 (38.1)	11 (25.6)	13 (31.7)	32 (30.5)
Black or African American	4 (16.0)	8 (16.0)	8 (15.7)	20 (15.9)	6 (13.6)	14 (14.9)	16 (18.2)	36 (15.9)	5 (23.8)	10 (23.3)	7 (17.1)	22 (21.0)
Asian	1 (4.0)	7 (14.0)	6 (11.8)	14 (11.1)	6 (13.6)	9 (9.6)	10 (11.4)	25 (11.1)	2 (9.5)	4 (9.3)	5 (12.2)	11 (10.5)
American Indian or Alaska Native	0	0	0	0	0	0	0	0	0	0	0	0
Native Hawaiian or Pacific Islander	0	0	1 (2.0)	1 (0.8)	0	0	0	0	0	0	0	0
Not reported	3 (12.0)	8 (16.0)	7 (13.7)	18 (14.3)	9 (20.5)	22 (23.4)	24 (27.3)	55 (24.3)	3 (14.3)	13 (30.2)	13 (31.7)	29 (27.6)
Other	2 (8.0)	5 (10.0)	7 (13.7)	14 (11.1)	7 (15.9)	12 (12.8)	9 (10.2)	28 (12.4)	3 (14.3)	5 (11.6)	3 (7.3)	11 (10.5)
Mean weight — kg	86.63±21.14	91.32±22.14	89.97±24.53	89.81±22.82	93.59±20.73	89.96±22.10	90.79±18.88	90.97±20.56	88.50±18.21	96.09±31.29	90.38±22.92	92.32±25.88
Body-mass index†	29.93±6.12	31.36±7.82	30.58±7.90	30.77±7.50	31.37±6.83	31.76±7.91	30.78±5.47	31.30±6.80	30.14±5.30	33.74±8.88	32.94±12.67	32.65±9.95
CRP, mg/l, n‡, median (min:max)	25, 122.000 (5.10:335.23)	48, 105.190 (14.70:296.70)	49, 111.230 (1.00:517.01)	122, 111.816 (1.00:517.01)	42, 195.700 (11.10:603.01)	92, 182.252 (5.00:819.94)	84, 179.902 (8.68:662.00)	218, 182.902 (5.00:819.94)	20, 188.502 (52.50:564.81)	40, 245.967 (37.50:654.66)	38, 249.252 (28.00:589.71)	98, 229.100 (28.00:654.66)
IL-6, pg/ml, n‡, median (min:max)	22, 75.265 (9.59:328.77)	43, 53.350 (9.10:323.83)	45, 71.480 (9.10:2771.49)	110, 67.105 (9.10:2771.49)	42, 118.705 (9.10:2176.98)	87, 127.530 (9.10:1597.06)	82, 141.190 (9.10:21545.37)	211, 131.900 (9.10:21545.37)	18, 338.160 (23.89:2193.05)	37, 208.800 (9.10:4058.18)	33, 301.180 (23.29:9900.13)	88, 254.945 (9.10:9900.13)
Comorbidities — no. (%)												
Hypertension	9 (36.0)	20 (40.0)	26 (51.0)	55 (43.7)	24 (54.5)	38 (40.4)	36 (40.9)	98 (43.4)	14 (66.7)	20 (46.5)	25 (61.0)	59 (56.2)
Diabetes	5 (20.0)	5 (10.0)	7 (13.7)	17 (13.5)	13 (29.5)	22 (23.4)	12 (13.6)	47 (20.8)	6 (28.6)	14 (32.6)	14 (34.1)	34 (32.4)
Obesity§	9 (36.0)	23 (46.0)	18 (35.3)	50 (39.7)	20 (45.5)	41 (43.6)	41 (46.6)	102 (45.1)	10 (47.6)	25 (58.1)	17 (41.5)	52 (49.5)
Systemic corticosteroid use — no. (%)	3 (12.0)	6 (12.0)	6 (11.8)	15 (11.9)	7 (15.9)	21 (22.3)	16 (18.2)	44 (19.5)	4 (19.0)	7 (16.3)	6 (14.6)	17 (16.2)

*Plus—minus values are means ±SD. CRP denotes C-reactive protein, IL-6 interleukin-6, IV intravenous, MSOD multi-system organ dysfunction, SD standard deviation, Q quartile.

†The body-mass index is the weight in kilograms divided by the square of the height in meters.

‡Patients with available data.

§BMI >30 kg/m².

Phase 2: Primary Efficacy End Point (mITT population)*†

	Percent Change From Baseline to day 4 in CRP Levels		
	Placebo Group (N=80)	Sarilumab 200 mg IV Group (N=152)	Sarilumab 400 mg IV Group (N=153)
Mean change from baseline — log scale	-0.18±0.78	-1.41±0.72	-1.47±0.93
LS mean difference vs. placebo — log scale	-	-1.25	-1.30
95% CI	-	-1.456 to -1.035	-1.511 to -1.090
P value	-	<0.0001	<0.0001
LS mean percent reduction from baseline — raw scale	20.0%	77.0%	78.0%
95% CI	3.5%–34.0%	73.2%–80.3%	74.6%–81.3%

*Phase 2 mITT population includes all randomized patients who received at least one dose of the study drug and have high baseline IL-6 levels (above upper limit of normal). Plus–minus values are means ±SD. CI denotes confidence interval, IV intravenous, LS least-squares, mITT modified intention-to-treat, SD standard deviation.

†All disease severities.

Phase 2: Summary of Selected Secondary End Points (ITT Population)

A. “Time to event” end points

Outcome	Severe Patients		Critical Patients		MSOD/Immunocompromised Patients	
	Sarilumab 200 mg IV Group (N=50) HR (95% CI)	Sarilumab 400 mg IV Group (N=51) HR (95% CI)	Sarilumab 200 mg IV Group (N=94) HR (95% CI)	Sarilumab 400 mg IV Group (N=88) HR (95% CI)	Sarilumab 200 mg IV Group (N=43) HR (95% CI)	Sarilumab 400 mg IV Group (N=41) HR (95% CI)
Time to improvement (≥2 points) in clinical status	1.17 (0.71–1.93)	0.74 (0.44–1.25)	1.24 (0.73–2.08)	1.64 (0.98–2.74)	0.91 (0.42–1.97)	0.90 (0.42–1.95)
Time to improvement (≥1 point) in clinical status	1.16 (0.70–1.92)	0.77 (0.46–1.30)	1.14 (0.68–1.90)	1.55 (0.94–2.56)	0.96 (0.44–2.06)	0.92 (0.43–1.98)
Time to resolution of fever for 48 hours without antipyretics or until discharge, in febrile patients at baseline	1.27 (0.66–2.43)	0.74 (0.39–1.41)	1.61 (0.76–3.40)	2.10 (1.01–4.40)	0.98 (0.32–3.05)	0.83 (0.25–2.71)
Time to improvement in oxygenation (increase in SpO ₂ /FiO ₂ of 50 or greater) for at least 48 hours or until discharge	0.87 (0.52–1.47)	0.50 (0.29–0.88)	0.76 (0.48–1.21)	1.09 (0.69–1.72)	0.81 (0.40–1.66)	1.01 (0.50–2.02)
Time to saturation ≥94% on room air	0.32 (0.11–0.94)	0.38 (0.14–1.05)	1.22 (0.70–2.14)	0.83 (0.46–1.51)	0.74 (0.36–1.52)	0.71 (0.35–1.47)
Time to discharge or NEWS2 ≤2 for 24 hours	0.97 (0.59–1.59)	0.65 (0.39–1.09)	1.23 (0.73–2.09)	1.91 (1.14–3.20)	0.97 (0.43–2.17)	0.94 (0.42–2.10)
Time to all-cause mortality	NA*	NA*	1.21 (0.66–2.21)	0.70 (0.37–1.35)	1.15 (0.52–2.53)	1.02 (0.45–2.30)
Time to discharge	1.18 (0.71–1.95)	0.74 (0.44–1.25)	1.12 (0.65–1.95)	1.51 (0.88–2.59)	0.92 (0.39–2.20)	0.56 (0.22–1.45)

*Hazard ratio could not be calculated, as the number of events was too small.

Blue = key secondary end point.

B. Categorical end points.*

Outcome	Severe Patients					Critical Patients					MSOD/Immunocompromised Patients				
	Placebo Group (N=25)	Sarilumab 200 mg IV Group (N=50)	Sarilumab 400 mg IV Group (N=51)	Risk difference sarilumab 200 mg IV vs placebo	Risk difference sarilumab 400 mg IV vs placebo	Placebo Group (N=44)	Sarilumab 200 mg IV Group (N=94)	Sarilumab 400 mg IV Group (N=88)	Risk difference sarilumab 200 mg IV vs placebo	Risk difference sarilumab 400 mg IV vs placebo	Placebo (N=21)	Sarilumab 200 mg IV Group (N=43)	Sarilumab 400 mg IV Group (N=41)	Risk difference sarilumab 200 mg IV vs placebo	Risk difference sarilumab 400 mg IV vs placebo
	no. (%) [95% CI]	no. (%) [95% CI]	no. (%) [95% CI]	[95% CI]	[95% CI]	no. (%) [95% CI]	no. (%) [95% CI]	no. (%) [95% CI]	[95% CI]	[95% CI]	no. (%) [95% CI]	no. (%) [95% CI]	no. (%) [95% CI]	[95% CI]	[95% CI]
Proportion with 1-point improvement (day 22)	23 (92.0%) [81.4–100.0]	46 (92.0%) [84.5–99.5]	35 (68.6%) [55.9–81.4]	0.0% [-13.0–13.0]	-23.4% [-40.0–6.8]	15 (34.1%) [20.1–48.1]	45 (47.9%) [37.8–58.0]	53 (60.2%) [50.0–70.5]	13.8% [-3.5–31.0]	26.1% [8.8–43.5]	10 (47.6%) [26.3–69.0]	17 (39.5%) [24.9–54.1]	18 (43.9%) [28.7–59.1]	-8.1% [-34.0–17.8]	-3.7% [-29.9–22.5]
Proportion who recover (day 22)	23 (92.0%) [81.4–100.0]	46 (92.0%) [84.5–99.5]	35 (68.6%) [55.9–81.4]	0.0% [-13.0–13.0]	-23.4% [-40.0–6.8]	15 (34.1%) [20.1–48.1]	39 (41.5%) [31.5–51.4]	46 (52.3%) [41.8–62.7]	7.4% [-9.8–24.6]	18.2% [0.7–35.6]	7 (33.3%) [13.2–53.5]	13 (30.2%) [16.5–44.0]	10 (24.4%) [11.2–37.5]	-3.1% [-27.5–21.3]	-8.9% [-33.0–15.1]

IV denotes intravenous.

Phase 2: Overview of Adverse Events (Safety Population)*

	Severe Patients			Critical Patients			MSOD/Immunocompromised Patients		
	Placebo Group (N=25)	Sarilumab 200 mg IV Group (N=50)	Sarilumab 400 mg IV Group (N=51)	Placebo Group (N=44)	Sarilumab 200 mg IV Group (N=94)	Sarilumab 400 mg IV Group (N=88)	Placebo Group (N=21)	Sarilumab 200 mg IV Group (N=43)	Sarilumab 400 mg IV Group (N=41)
TEAEs – total no.	11	32	47	81	145	141	40	84	83
SAEs – total no.	4	7	27	62	95	96	24	57	49
AESIs – total no.	7	27	26	34	61	53	17	37	46
Serious AESIs – total no.	0	2	6	15	11	8	1	10	12
Patients with any TEAE – no. (%)	7 (28.0)	19 (38.0)	25 (49.0)	28 (63.6)	69 (73.4)	56 (63.6)	16 (76.2)	35 (81.4)	33 (80.5)
Patients with any SAE – no. (%)	1 (4.0)	5 (10.0)	16 (31.4)	26 (59.1)	56 (59.6)	41 (46.6)	12 (57.1)	29 (67.4)	27 (65.9)
Patients with any AESI – no. (%)	7 (28.0)	17 (34.0)	16 (31.4)	17 (38.6)	38 (40.4)	37 (42.0)	11 (52.4)	22 (51.2)	23 (56.1)
Patients with any serious AESI – no. (%)	0	2 (4.0)	4 (7.8)	10 (22.7)	8 (8.5)	7 (8.0)	1 (4.8)	8 (18.6)	8 (19.5)
Patients with any TEAE leading to death – no. (%)	0	2 (4.0)	8 (15.7)	14 (31.8)	37 (39.4)	22 (25.0)	9 (42.9)	20 (46.5)	15 (36.6)
Patients with any TEAE leading to withdrawal from the study drug – no. (%)	0	0	0	0	0	0	0	0	1 (2.4)
Patients with any TEAE leading to study infusion interruption – no. (%)	0	0	0	0	1 (1.1)	1 (1.1)	0	0	0
Related TEAEs – total no.	2	17	14	5	20	30	6	18	22
Related SAEs – total no.	0	2	3	0	2	8	0	5	7
Related AESIs – total no.	2	17	14	5	20	25	6	17	21
Related serious AESIs – total no.	0	2	3	0	2	3	0	4	6
Patients with related TEAE – no. (%)	2 (8.0)	13 (26.0)	9 (17.6)	4 (9.1)	13 (13.8)	19 (21.6)	5 (23.8)	11 (25.6)	11 (26.8)
Patients with related SAE – no. (%)	0	2 (4.0)	2 (3.9)	0	1 (1.1)	7 (8.0)	0	4 (9.3)	4 (9.8)
Patients with related AESI – no. (%)	2 (8.0)	13 (26.0)	9 (17.6)	4 (9.1)	13 (13.8)	18 (20.5)	5 (23.8)	10 (23.3)	10 (24.4)
Patients with related serious AESI – no. (%)	0	2 (4.0)	2 (3.9)	0	1 (1.1)	3 (3.4)	0	3 (7.0)	3 (7.3)

*AESI denotes adverse event of special interest, IV intravenous, TEAE treatment-emergent adverse event, SAE serious adverse event.

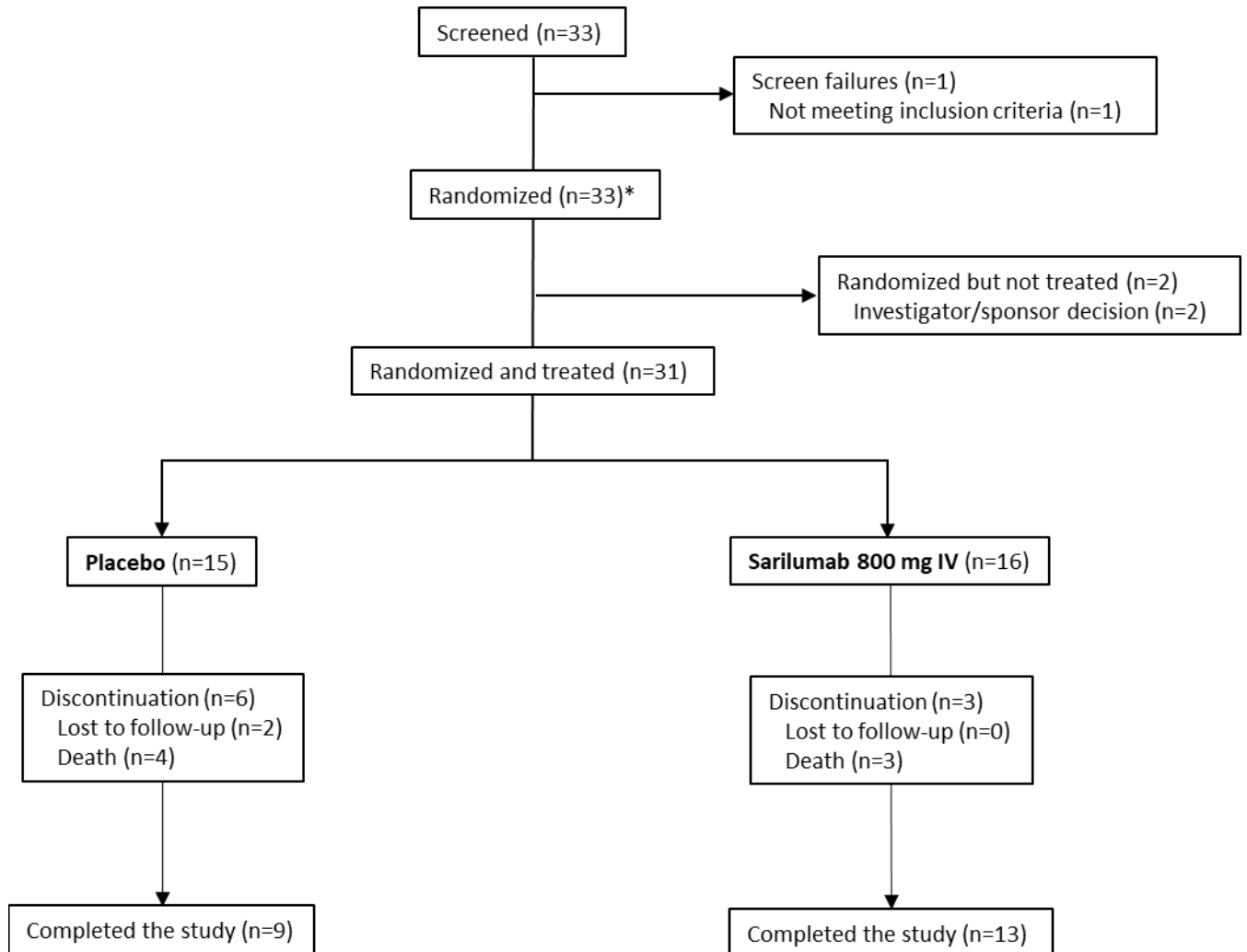
Phase 2: Treatment-Emergent Serious Adverse Events and Adverse Events of Special Interest Occurring in ≥5% of Patients in Any Group (Safety Population)*

System Organ Class Preferred Term	Severe Patients			Critical Patients			MSOD/Immunocompromised Patients		
	Placebo Group (N=25)	Sarilumab 200 mg IV Group (N=50)	Sarilumab 400 mg IV Group (N=51)	Placebo Group (N=44)	Sarilumab 200 mg IV Group (N=94)	Sarilumab 400 mg IV Group (N=88)	Placebo Group (N=21)	Sarilumab 200 mg IV Group (N=43)	Sarilumab 400 mg IV Group (N=41)
SAEs									
SAEs — no.	4	7	27	62	95	96	24	57	49
Patients with ≥1 SAE — no. (%)	1 (4.0)	5 (10.0)	16 (31.4)	26 (59.1)	56 (59.6)	41 (46.6)	12 (57.1)	29 (67.4)	27 (65.9)
Vascular disorders — no. (%)									
Deep vein thrombosis	1 (4.0)	0 (0)	2 (3.9)	0 (0.0)	3 (3.2)	5 (5.7)	0 (0.0)	1 (2.3)	2 (4.9)
Cardiac disorders — no. (%)									
Cardiac arrest	0 (0.0)	0 (0.0)	2 (3.9)	0 (0.0)	6 (6.4)	8 (9.1)	3 (14.3)	3 (7.0)	6 (14.6)
Cardio-respiratory arrest	0 (0.0)	1 (2.0)	2 (3.9)	4 (9.1)	9 (9.6)	4 (4.5)	2 (9.5)	1 (2.3)	2 (4.9)
Infections and infestations — no. (%)									
Staphylococcal infection	0 (0.0)	0 (0.0)	0 (0.0)	3 (6.8)	0 (0.0)	2 (2.3)	0 (0.0)	0 (0.0)	2 (4.9)
COVID-19	0 (0.0)	0 (0.0)	1 (2.0)	2 (4.5)	7 (7.4)	1 (1.1)	1 (4.8)	6 (14.0)	3 (7.3)
Investigations — no. (%)									
Transaminases increased	0 (0.0)	0 (0.0)	0 (0.0)	1 (2.3)	2 (2.1)	1 (1.1)	0 (0.0)	4 (9.3)	0 (0.0)
Respiratory, thoracic, and mediastinal disorders — no. (%)									
Respiratory failure	0 (0.0)	1 (2.0)	6 (11.8)	5 (11.4)	11 (11.7)	4 (4.5)	1 (4.8)	3 (7.0)	2 (4.9)
Acute respiratory failure	0 (0.0)	0 (0.0)	0 (0.0)	6 (13.6)	7 (7.4)	3 (3.4)	1 (4.8)	1 (2.3)	1 (2.4)
Renal and urinary disorders — no. (%)									
Acute kidney injury	0 (0.0)	1 (2.0)	0 (0.0)	5 (11.4)	4 (4.3)	6 (6.8)	0 (0.0)	4 (9.3)	3 (7.3)
Renal failure	0 (0.0)	0 (0.0)	0 (0.0)	1 (2.3)	1 (1.1)	2 (2.3)	0 (0.0)	3 (7.0)	0 (0.0)
AESIs									
AESIs — no.	7	27	26	34	61	53	17	37	46
Patients with ≥1 AESI — no. (%)	7 (28.0)	17 (34.0)	16 (31.4)	17 (38.6)	38 (40.4)	37 (42.0)	11 (52.4)	22 (51.2)	23 (56.1)
Investigations — no. (%)									
Alanine aminotransferase increased	2 (8.0)	14 (28.0)	10 (19.6)	9 (20.5)	18 (19.1)	19 (21.6)	4 (19.0)	8 (18.6)	4 (9.8)
Aspartate aminotransferase increased	2 (8.0)	7 (14.0)	7 (13.7)	7 (15.9)	14 (14.9)	14 (15.9)	6 (28.6)	11 (25.6)	12 (29.3)
Transaminases increased	1 (4.0)	1 (2.0)	3 (5.9)	1 (2.3)	6 (6.4)	4 (4.5)	1 (4.8)	4 (9.3)	0 (0.0)
Infections and infestations — no. (%)									
Enterococcal bacteremia	0 (0.0)	0 (0.0)	0 (0.0)	0 (0.0)	0 (0.0)	0 (0.0)	0	0	3 (7.3)
Pneumonia	0 (0.0)	0 (0.0)	0 (0.0)	0 (0.0)	2 (2.1)	1 (1.1)	1 (4.8)	0	3 (7.3)
Staphylococcal bacteremia	0 (0.0)	0 (0.0)	0 (0.0)	0 (0.0)	0 (0.0)	0 (0.0)	1 (4.8)	0	3 (7.3)
Staphylococcal infection	0 (0.0)	0 (0.0)	0 (0.0)	4 (9.1)	0	2 (2.3)	1 (4.8)	0	3 (7.3)

*AESI denotes adverse event of special interest, IV intravenous SAE serious adverse event.

Phase 3 (Cohort 2) Study Results

Phase 3 (Cohort 2): Flow Diagram



*Includes 1 screen failure that was randomized.

Phase 3 (Cohort 2): Demographics and Baseline Characteristics (ITT Population)*

	Placebo Group (N=15)	Sarilumab 800 mg IV Group (N=16)
Median age — years (Q1:Q3)	49 (41.0:58.0)	48.5 (41.5:65.0)
Male sex — no. (%)	11 (73.3)	11 (68.8)
Ethnicity — no. (%)		
Hispanic or Latino	5 (33.3)	10 (62.5)
Not Hispanic or Latino	5 (33.3)	6 (37.5)
Not reported	1 (6.7)	0
Unknown	4 (26.7)	0
Race — no. (%)		
White	7 (46.7)	8 (50.0)
Black or African American	3 (20.0)	3 (18.8)
Asian	0	0
American Indian or Alaska Native	0	0
Native Hawaiian or Pacific Islander	0	0
Not reported	5 (33.3)	1 (6.3)
Other	0	4 (25.0)
Mean weight – kg	97.72±25.01	104.23±31.94
Body-mass index [†]	33.83±8.15	50.71±58.82
CRP, mg/L, n [‡] , median (min:max)	13, 185.904 (91.70:445.01)	15, 184.000 (64.00:405.00)
IL-6, pg/mL, n [‡] , median (min:max)	14, 115.475 (9.59:882.96)	15, 164.730 (9.59:1689.34)
Comorbidities — no. (%)		
Hypertension	5 (33.3)	8 (50.0)
Diabetes	2 (13.3)	7 (43.8)
Obesity [§]	10 (66.7)	12 (75.0)
Systemic corticosteroid use — no. (%)	10 (66.7)	7 (43.8)

*Plus-minus values are means ±SD. CRP denotes C-reactive protein, ITT intention-to-treat, IV intravenous, SD standard deviation.

[†]The body-mass index is the weight in kilograms divided by the square of the height in meters.

[‡]Patients with available data.

[§]Body-mass index >30 kg/m².

Phase 3 (Cohort 2): Overview of Adverse Events (Safety Population)*

	Placebo Group (N=15)	Sarilumab 800 mg IV Group (N=16)
TEAEs — no.	28	20
SAEs — no.	21	12
AESIs — no.	11	11
Serious AESIs — no.	4	3
Patients with any TEAE — no. (%)	11 (73.3)	9 (56.3)
Patients with any SAE — no. (%)	10 (66.7)	5 (31.3)
Patients with any AESI — no. (%)	7 (46.7)	8 (50.0)
Patients with any serious AESI — no. (%)	3 (20.0)	2 (12.5)
Patients with any TEAE leading to death — no. (%)	3 (20.0)	2 (12.5)
Patients with any TEAE leading to withdrawal from the study drug — no. (%)	0	1 (6.3)
Patients with any TEAE leading to study infusion interruption — no. (%)	1 (6.7)	1 (6.3)
Related TEAEs — no.	9	7
Related SAEs — no.	4	2
Related AESIs — no.	8	7
Related serious AESIs — no.	3	2
Patients with related TEAE — no. (%)	5 (33.3)	6 (37.5)
Patients with related SAE — no. (%)	3 (20.0)	1 (6.3)
Patients with related AESI — no. (%)	5 (33.3)	6 (37.5)
Patients with related serious AESI — no. (%)	2 (13.3)	1 (6.3)

*AESI denotes adverse event of special interest, IV intravenous, TEAE treatment-emergent adverse event, SAE serious adverse event.

Phase 3 (Cohort 2): Treatment-Emergent Serious Adverse Events and Adverse Events of Special Interest Occurring in ≥5% of Patients in Any Group (Safety Population)*

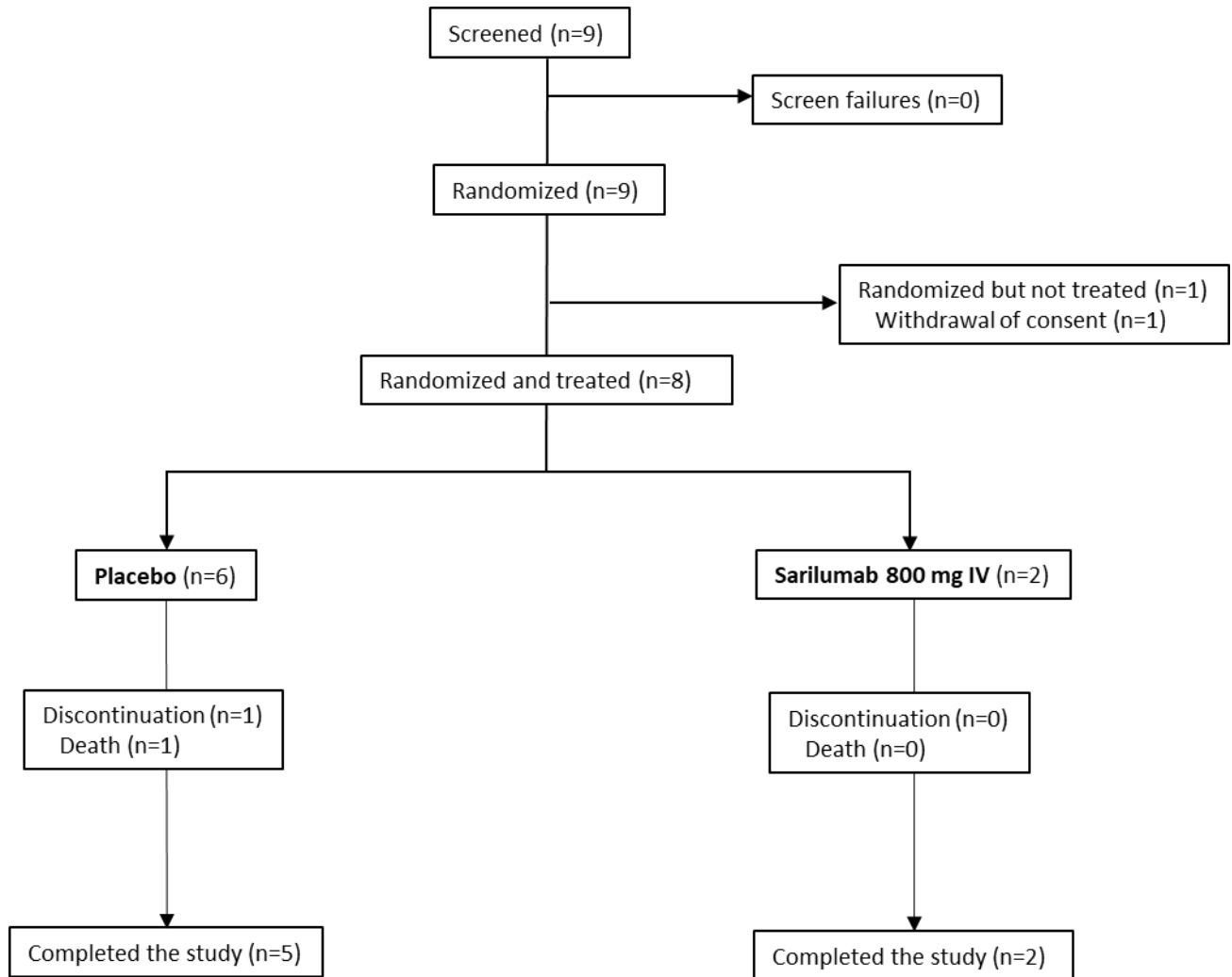
System Organ Class Preferred Term	Placebo Group (N=15)	Sarilumab 800 mg IV Group (N=16)
SAEs		
SAEs — no.	21	12
Patients with ≥1 SAE — no. (%)	10 (66.7)	5 (31.3)
Blood and lymphatic system disorders — no. (%)	4 (26.7)	1 (6.3)
Anemia	3 (20.0)	1 (6.3)
Thrombocytopenia	1 (6.7)	0
Cardiac disorders — no. (%)	0	1 (6.3)
Cardio-respiratory arrest	0	1 (6.3)
Cardiogenic shock	0	1 (6.3)
Hepatobiliary disorders — no. (%)	1 (6.7)	0
Cholecystitis	1 (6.7)	0
Infections and infestations — no. (%)	6 (40.0)	3 (18.8)
Bacteremia	1 (6.7)	1 (6.3)
COVID-19	1 (6.7)	0
COVID-19 pneumonia	2 (13.3)	1 (6.3)
Pneumonia	1 (6.7)	0
Pneumonia bacterial	2 (13.3)	0
Septic shock	0	2 (12.5)
Investigations — no. (%)	1 (6.7)	1 (6.3)
Liver function test increased	1 (6.7)	0
Transaminases increased	0	1 (6.3)
Metabolism and nutrition disorders — no. (%)	1 (6.7)	0
Acidosis	1 (6.7)	0
Hypokalemia	1 (6.7)	0
Nervous system disorders — no. (%)	2 (13.3)	1 (6.3)
Alcoholic seizure	0	1 (6.3)
Cerebrovascular accident	1 (6.7)	0
Seizure like phenomena	1 (6.7)	0
Renal and urinary disorders — no. (%)	2 (13.3)	0
Acute kidney injury	2 (13.3)	0
Respiratory, thoracic, and mediastinal disorders — no. (%)	2 (13.3)	2 (12.5)
Acute respiratory distress syndrome	0	1 (6.3)
Pneumothorax	0	1 (6.3)
Respiratory acidosis	1 (6.7)	0
Respiratory failure	1 (6.7)	0
Vascular disorders	0	1 (6.3)
Hypertension	0	1 (6.3)
AESIs		
AESIs — no.	11	11
Patients with ≥1 AESI — no. (%)	7 (46.7)	8 (50.0)
Blood and lymphatic system disorders — no. (%)	0	1 (6.3)
Neutropenia	0	1 (6.3)
Infections and infestations— no. (%)	3 (20.0)	4 (25.0)
Acinetobacter infection	1 (6.7)	0

Bacteremia	2 (13.3)	2 (12.5)
Pneumonia	1 (6.7)	1 (6.3)
Pneumonia bacterial	1 (6.7)	0
Septic shock	0	1 (6.3)
Staphylococcal infection	0	1 (6.3)
Urinary tract infection	1 (6.7)	0
Investigations — no. (%)	3 (20.0)	5 (31.3)
Alanine aminotransferase increased	1 (6.7)	0
Aspartate aminotransferase increased	1 (6.7)	2 (12.5)
Hepatic enzyme increased	0	1 (6.3)
Liver function test increased	2 (13.3)	1 (6.3)
Transaminases increased	0	1 (6.3)
Nervous system disorders — no. (%)	1 (6.7)	0
Seizure like phenomena	1 (6.7)	0

* AESI denotes adverse event of special interest, IV intravenous, SAE serious adverse event.

Phase 3 (Cohort 3) Study Results

Phase 3 (Cohort 3): Flow Diagram



Phase 3 (Cohort 3): Demographics and Baseline Characteristics (ITT Population)*

	Placebo Group (N=6)	Sarilumab 800 mg IV Group (N=2)
Median age — years (Q1:Q3)	59.0 (55.0:69.0)	66.0 (61.0:71.0)
Male sex — no. (%)	3 (50.0)	2 (100.0)
Ethnicity — no. (%)		
Hispanic or Latino	2 (33.3)	1 (50.0)
Not Hispanic or Latino	3 (50.0)	0
Not reported	0	1 (50.0)
Unknown	1 (16.7)	0
Race — no. (%)		
White	2 (33.3)	1 (50.0)
Black or African American	2 (33.3)	0
Asian	0	0
American Indian or Alaska Native	0	0
Native Hawaiian or Pacific Islander	0	0
Not reported	2 (33.3)	0
Other	0	1 (50.0)
Mean weight — kg	99.02±13.53	91.60±4.53
Body-mass index [†] ,	34.14±3.68	33.05±0.92
CRP, mg/l, n [‡] , median (min:max)	6, 162.500 (89.00:325.00)	2, 258.081 (116.16:400.00)
IL-6, pg/ml, n [‡] , median (min:max)	5, 45.590 (9.59:270.21)	1, 124.260 (124.26:124.26)
Comorbidities — no. (%)		
Hypertension	4 (66.7)	1 (50.0)
Diabetes	1 (16.7)	2 (100.0)
Obesity [§]	4 (66.7)	2 (100.0)
Systemic corticosteroid use — no. (%)	3 (50.0)	0

*Plus-minus values are means ±SD. CRP denotes C-reactive protein, ITT intention-to-treat, IV intravenous, SD standard deviation.

[†]The body-mass index is the weight in kilograms divided by the square of the height in meters.

[‡]Patients with available data.

[§]BMI >30 kg/m².

Phase 3 (Cohort 3): Overview of Adverse Events (Safety Population)*

	Placebo Group (N=6)	Sarilumab 800 mg IV Group (N=2)
TEAEs — total no.	8	3
SAEs — total no.	7	1
AESIs — total no.	1	2
Serious AESIs — total no.	0	0
Patients with any TEAE — no. (%)	1 (16.7)	2 (100.0)
Patients with any SAE — no. (%)	1 (16.7)	1 (50.0)
Patients with any AESI — no. (%)	1 (16.7)	2 (100.0)
Patients with any serious AESI — no. (%)	0	0
Patients with any TEAE leading to death — no. (%)	1 (16.7)	0
Patients with any TEAE leading to withdrawal from the study drug — no. (%)	0	0
Patients with any TEAE leading to study infusion interruption — no. (%)	0	1 (50.0)
Related TEAEs — no.	1	1
Related SAEs — no.	0	0
Related AESIs — no.	1	1
Related serious AESIs — no.	0	0
Patients with related TEAE — no. (%)	1 (16.7)	1 (50.0)
Patients with related SAE — no. (%)	0	0
Patients with related AESI — no. (%)	1 (16.7)	1 (50.0)
Patients with related serious AESI — no. (%)	0	0

*AESI denotes adverse event of special interest, IV intravenous, TEAE treatment-emergent adverse event, SAE serious adverse event.

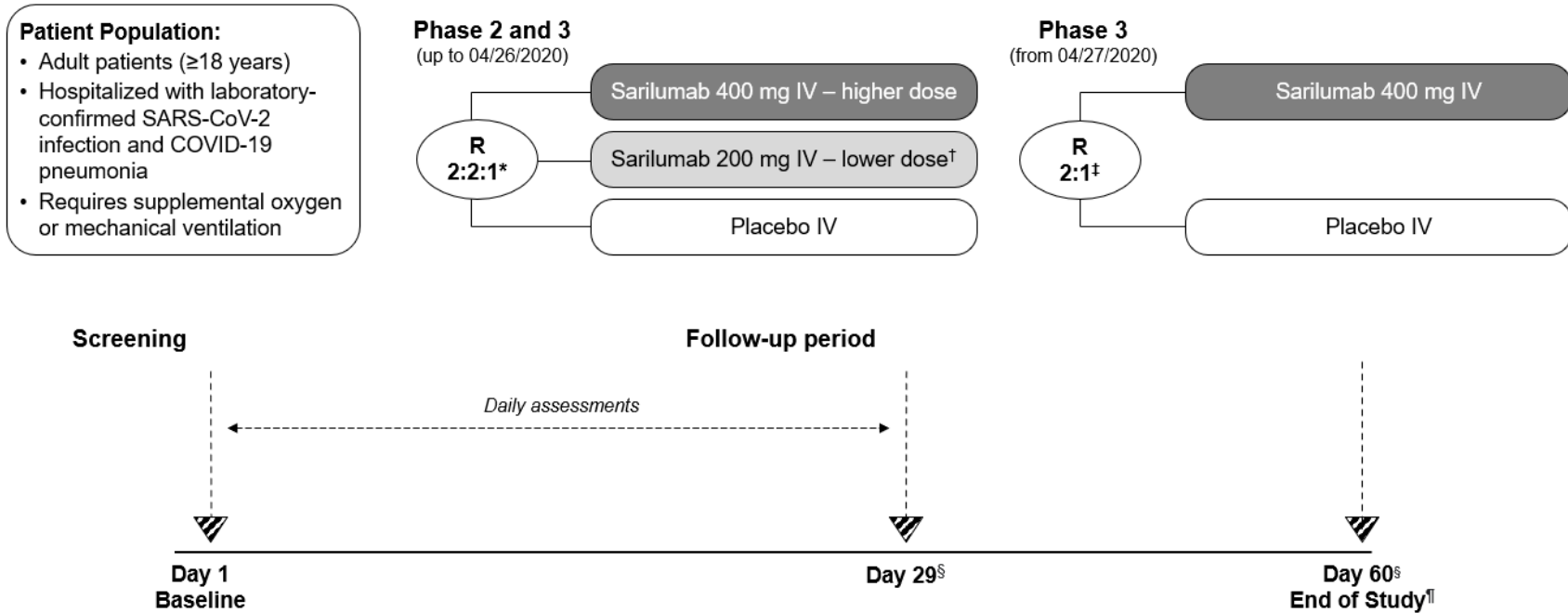
Phase 3 (Cohort 3): Treatment-Emergent Serious Adverse Events and Adverse Events of Special Interest Occurring in $\geq 5\%$ of Patients in Any Group (Safety Population)*

System Organ Class Preferred Term	Placebo Group (N=6)	Sarilumab 800 mg IV Group (N=2)
SAEs		
SAEs — no.	7	1
Patients with ≥ 1 SAE — no. (%)	1 (16.7)	1 (50.0)
Cardiac disorders — no. (%)	1 (16.7)	0
Atrial fibrillation	1 (16.7)	0
Pulseless electrical activity	1 (16.7)	0
Infections and infestations — no. (%)	1 (16.7)	0
Septic shock	1 (16.7)	0
Renal and urinary disorders — no. (%)	1 (16.7)	0
Acute kidney injury	1 (16.7)	0
Respiratory, thoracic, and mediastinal disorders — no. (%)	1 (16.7)	1 (50.0)
Acute respiratory failure	1 (16.7)	1 (50.0)
Vascular disorders — no. (%)	1 (16.7)	0
Deep vein thrombosis	1 (16.7)	0
AESIs		
AESIs — no.	1	2
Patients with ≥ 1 AESI — no. (%)	1 (16.7)	2 (100.0)
Infections and infestations — no. (%)	1 (16.7)	1 (50.0)
Staphylococcal bacteremia	1 (16.7)	0
Staphylococcal infection	0	1 (50.0)
Respiratory, thoracic, and mediastinal disorders — no. (%)	0	1 (50.0)
Dyspnea	0	1 (50.0)

*AESI denotes adverse event of special interest, IV intravenous, SAE serious adverse event.

Supplementary Figures

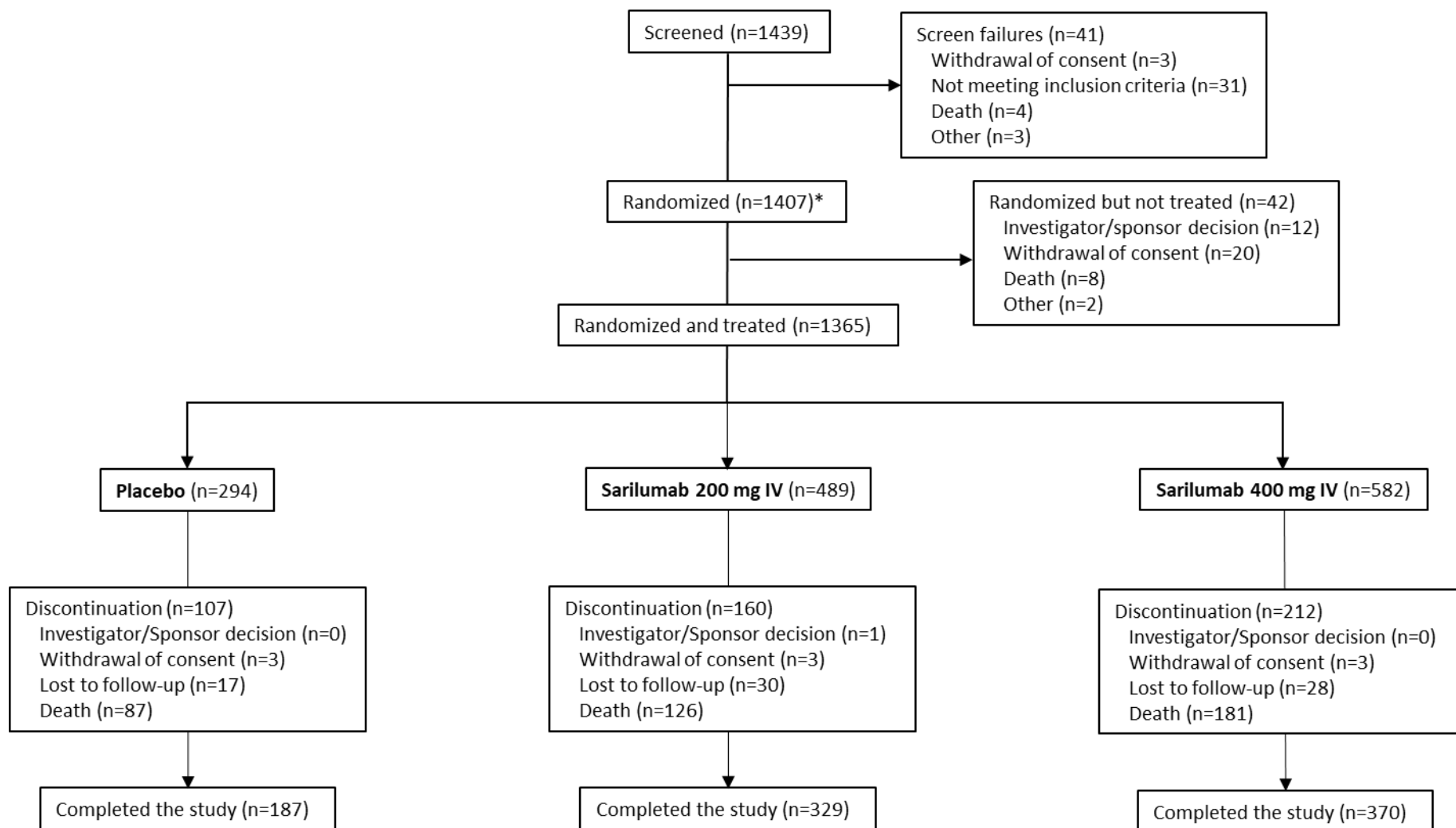
Figure S1. Schematic Overview of the Study Design (Phase 2 and Phase 3)



*Stratified by corticosteroid use and disease severity; [†]Following Phase 2 interim analysis, the IDMC recommended to eliminate the sarilumab 200 mg group and restrict future enrolment to critical patients; [‡]Critical stratum only; [§]If the patient has been discharged from the hospital before day 29 or 60 the study site staff will contact the patient for a follow-up phone call; [¶]The End of Study will be on day 60 or day of death, whichever comes first.

IDMC, Independent Data Monitoring Committee; IV, intravenous; R, randomized.

Figure S2. Phase 3 (Cohort 1): Flow Diagram

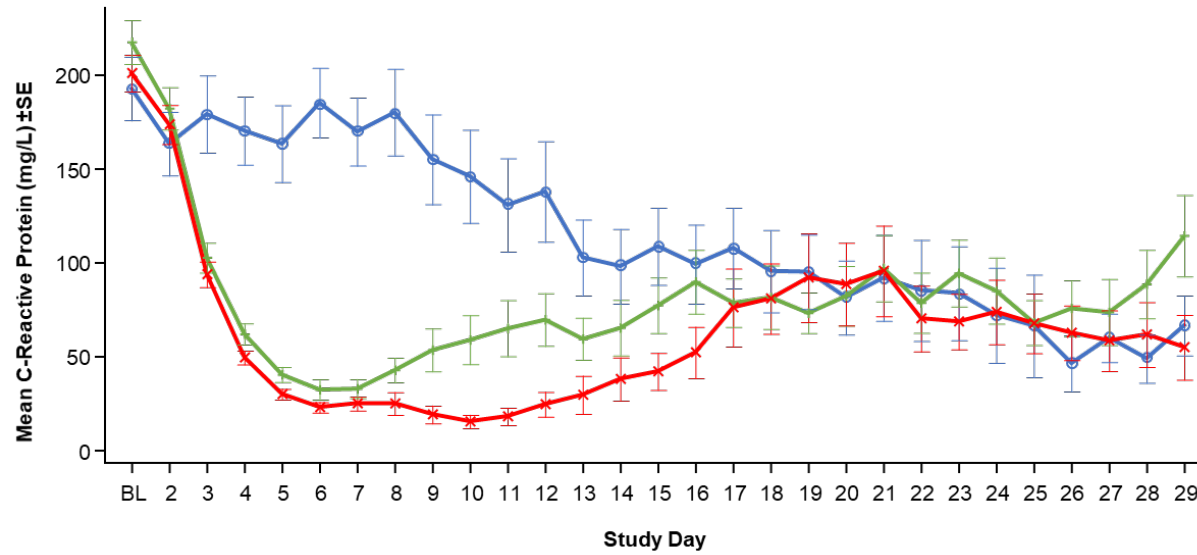


*Includes 9 screen failures that were randomized.

Figure S3. Phase 3 (Cohort 1): CRP Over Time in Critical Patients (Safety Population)

A. Critical patients receiving mechanical ventilation at baseline

Treatment — Placebo (N=62) — Sarilumab 200 mg IV (N=104) — Sarilumab 400 mg IV (N=132)

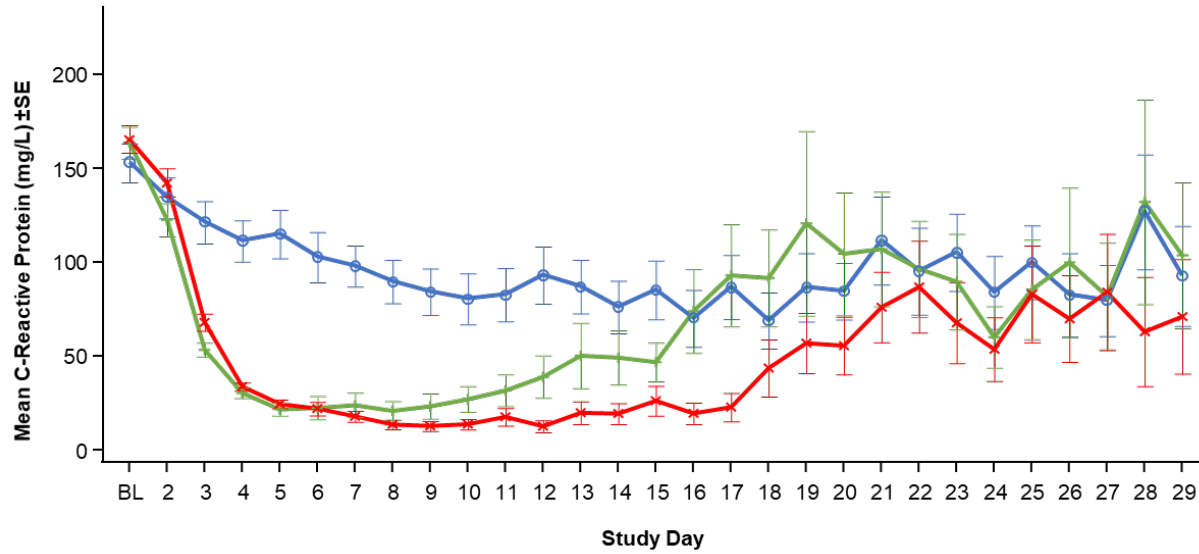


Number of patients on each study day

	BL	2	3	4	5	6	7	8	9	10	11	12	13	14	15	16	17	18	19	20	21	22	23	24	25	26	27	28	29
Placebo (N=62)	59	44	40	53	39	37	40	30	26	29	24	23	23	22	29	18	18	17	15	14	16	14	16	13	11	9	11	11	11
Sarilumab 200 mg IV (N=104)	100	81	73	90	73	62	74	59	51	49	39	43	39	32	38	31	32	29	27	26	22	25	22	23	20	17	20	21	18
Sarilumab 400 mg IV (N=132)	121	101	100	115	90	84	101	78	73	67	60	52	43	42	54	37	26	31	28	30	25	26	27	23	20	20	15	17	16

B. Critical patients **not** receiving mechanical ventilation at baseline

Treatment — Placebo (N=108) — Sarilumab 200 mg IV (N=138) — Sarilumab 400 mg IV (N=204)



Number of patients on each study day

Placebo (N=108)	103	81	84	92	80	69	76	66	53	45	48	36	41	33	33	26	28	25	24	23	19	20	21	20	20	16	14	9	12
Sarilumab 200 mg IV (N=138)	123	101	87	109	83	71	81	57	52	42	38	40	28	28	33	16	19	19	12	16	15	15	17	13	9	6	8	7	10
Sarilumab 400 mg IV (N=204)	192	167	141	166	132	112	138	97	77	66	68	62	48	51	50	40	37	34	31	31	27	26	24	25	19	17	14	12	11

Supplementary Tables

Table S1. Summary of Analysis Populations by Disease Severity Strata*

	Placebo Group	Sarilumab 200 mg IV Group	Sarilumab 400 mg IV Group
Phase 2			
Intention-to-treat — no. [†]			
All disease severity	90	187	180
Severe [‡]	25	50	51
Critical	44	94	88
MSOD/Immunocompromised [‡]	21	43	41
Modified intention-to-treat — no. [§]			
All disease severity	80	152	153
Severe	21	37	42
Critical	41	80	78
MSOD/Immunocompromised	18	35	33
Safety population — no. [¶]			
All disease severity	90	187	180
Severe	25	50	51
Critical	44	94	88
MSOD/Immunocompromised	21	43	41
Phase 3 – Cohort 1			
Intention-to-treat — no. [†]			
Severe	70	140	137
Critical	170	242	338
Critical receiving mechanical ventilation at baseline [#]	62	104	132
Critical <u>not</u> receiving mechanical ventilation at baseline	108	138	204
MSOD/Immunocompromised	54	107	107
Safety population — no. [¶]			
Severe	70	140	137
Critical	170	242	338
Critical receiving mechanical ventilation at baseline [#]	62	104	132
Critical <u>not</u> receiving mechanical ventilation at baseline	108	138	204
MSOD/Immunocompromised	54	107	107

Integrated Phase (Phase 2 and Phase 3 [Cohort 1])

Intention-to-treat — no.†			
Severe	95	190	188
Critical	214	335	423
Critical receiving mechanical ventilation at baseline#	80	164	179
Critical <u>not</u> receiving mechanical ventilation at baseline	134	171	244

*IV denotes intravenous, MSOD multiple system organ dysfunction.

†Intention-to-treat population includes all randomized patients who received at least one dose of the study drug.

‡Severe, MSOD, and immunocompromised populations were considered exploratory based on the statistical analysis plan.

§Modified intention-to-treat population includes randomized patients who received at least one dose of the study drug and had high baseline IL-6 levels.

¶Safety population includes all randomized patients who received at least one dose of the study drug.

#Pre-specified primary end point.

Table S2. Phase 3 (Cohort 1) – Severe and MSOD Strata: Demographics and Baseline Characteristics (EITT Population)*

	Severe Patients				MSOD Patients			
	Placebo (N=70)	Sarilumab 200 mg IV Group (N=140)	Sarilumab 400 mg IV Group (N=137)	Total (N=347)	Placebo (N=46)	Sarilumab 200 mg IV Group (N=95)	Sarilumab 400 mg IV Group (N=92)	Total (N=233)
Median age — years (Q1:Q3)	63.5 (49.0:72.0)	62.5 (50.0:72.0)	63.0 (54.0:74.0)	63.0 (51.0:73.0)	60.5 (49.0:71.0)	61.0 (53.0:67.0)	64.5 (53.5:71.5)	62.0 (53.0:69.0)
Male sex — no. (%)	45 (64.3)	81 (57.9)	86 (62.8)	212 (61.1)	25 (54.3)	54 (56.8)	58 (63.0)	137 (58.8)
Ethnicity— no. (%)								
Hispanic or Latino	19 (27.1)	30 (21.4)	30 (21.9)	79 (22.8)	12 (26.1)	27 (28.4)	21 (22.8)	60 (25.8)
Not Hispanic or Latino	40 (57.1)	80 (57.1)	88 (64.2)	208 (59.9)	26 (56.5)	46 (48.4)	47 (51.1)	119 (51.1)
Not reported	7 (10.0)	20 (14.3)	13 (9.5)	40 (11.5)	7 (15.2)	16 (16.8)	16 (17.4)	39 (16.7)
Unknown	4 (5.7)	10 (7.1)	6 (4.4)	20 (5.8)	1 (2.2)	6 (6.3)	8 (8.7)	15 (6.4)
Race — no. (%)								
White	28 (40.0)	45 (32.1)	49 (35.8)	122 (35.2)	11 (23.9)	29 (30.5)	25 (27.2)	65 (27.9)
Black or African American	10 (14.3)	35 (25.0)	25 (18.2)	70 (20.2)	8 (17.4)	23 (24.2)	23 (25.0)	54 (23.2)
Asian	2 (2.9)	6 (4.3)	13 (9.5)	21 (6.1)	5 (10.9)	3 (3.2)	2 (2.2)	10 (4.3)
American Indian or Alaska Native	0	2 (1.4)	0	2 (0.6)	1 (2.2)	0	0	1 (0.4)
Native Hawaiian or Pacific Islander	1 (1.4)	1 (0.7)	1 (0.7)	3 (0.9)	0	0	1 (1.1)	1 (0.4)
Not reported	17 (24.3)	36 (25.7)	25 (18.2)	78 (22.5)	15 (32.6)	34 (35.8)	30 (32.6)	79 (33.9)
Other	12 (17.1)	15 (10.7)	24 (17.5)	51 (14.7)	6 (13.0)	6 (6.3)	11 (12.0)	23 (9.9)
Mean weight — kg	87.31±21.57	92.55±23.90	88.40±21.72	89.84±22.64	92.51±24.00	102.34±38.81	88.94±22.41	95.21±31.01
Body-mass index [†] ,	31.83±8.85	32.59±7.80	30.68±6.90	31.68±7.72	32.54±8.50	35.20±12.64	31.14±7.32	33.13±10.22

CRP, mg/l, n [‡] , median (min:max)	64, 96.201 (4.00:382.80)	133, 105.502 (7.00:999.00)	114, 103.400 (3.00:1260.00)	311, 102.00 (3.00:1260.00)	44, 179.004 (21.00:475.00)	89, 195.404 (10.17:2626.00)	86, 216.00 (16.00:723.00)	219, 210.604 (10.17:2626.00)
IL-6, pg/ml, n [‡] , median (min:max)	64, 53.570 (9.10:571.26)	126, 52.585 (9.10:1713.25)	117, 54.240 (9.10:696.18)	307, 54.240 (9.10:1713.25)	36, 179.765 (9.59:32374.39)	74, 226.755 (9.59:17047.47)	76, 306.430 (9.59:9488.14)	186, 243.165 (9.59:32374.39)
Comorbidities — no. (%)								
Hypertension	37 (52.9)	73 (52.1)	74 (54.0)	184 (53.0)	26 (56.5)	55 (57.9)	45 (48.9)	126 (54.1)
Diabetes	14 (20.0)	33 (23.6)	26 (19.0)	73 (21.0)	8 (17.4)	15 (15.8)	17 (18.5)	40 (17.2)
Obesity [§]	34 (48.6)	75 (53.6)	57 (41.6)	166 (47.8)	24 (52.2)	60 (63.2)	39 (42.2)	123 (52.8)
Systemic corticosteroid use — no. (%)	23 (32.9)	47 (33.6)	44 (32.1)	114 (32.9)	14 (30.4)	30 (31.6)	29 (31.5)	73 (31.3)

*Plus-minus values are means \pm SD. CRP denotes C-reactive protein, EITT exploratory intention-to-treat, IL-6 interleukin-6, IV intravenous, SD standard deviation, Q quartile.

[†]The body-mass index is the weight in kilograms divided by the square of the height in meters.

[‡]Patients with available data.

[§]Body-mass index >30 kg/m².

Table S3. Integrated Phase 2/3 Population: Demographics and Baseline Characteristics (ITT Population)*

	Severe Patients				Critical Patients Receiving Mechanical Ventilation at Baseline				Critical Patients <u>Not</u> Receiving Mechanical Ventilation at Baseline				All Critical Patients			
	Placebo Group (N=95)	Sarilumab 200 mg IV Group (N=190)	Sarilumab 400 mg IV Group (N=188)	Total (N=473)	Placebo Group (N=60)	Sarilumab 200 mg IV Group (N=164)	Sarilumab 400 mg IV Group (N=179)	Total (N=423)	Placebo Group (N=134)	Sarilumab 200 mg IV Group (N=171)	Sarilumab 400 mg IV Group (N=244)	Total (N=549)	Placebo Group (N=214)	Sarilumab 200 mg IV Group (N=335)	Sarilumab 400 mg IV Group (N=423)	Total (N=972)
Median age — years (Q1-Q3)	63.0 (50.0;71.0)	61.0 (48.0;71.0)	61.0 (50.0;72.0)	61.0 (50.0;72.0)	58.5 (48.5;69.0)	59.0 (49.5;67.0)	60.0 (50.0;70.0)	59.0 (49.0;69.0)	60.5 (52.0;71.0)	59.0 (50.0;69.0)	62.5 (51.0;71.0)	61.0 (51.0;70.0)	60.0 (50.0;69.0)	59.0 (50.0;68.0)	62.0 (51.0;71.0)	60.0 (50.0;69.0)
Male sex — no. (%)	60 (63.2)	115 (60.5)	124 (66.0)	299 (63.2)	59 (73.8)	109 (66.5)	123 (68.7)	291 (68.8)	89 (66.4)	127 (74.3)	173 (70.9)	389 (70.9)	148 (69.2)	236 (70.4)	296 (70.0)	680 (70.0)
Ethnicity — no. (%)																
Hispanic or Latino	23 (24.2)	43 (22.6)	39 (20.7)	105 (22.2)	28 (35.0)	51 (31.1)	52 (29.1)	131 (31.0)	38 (28.4)	55 (32.2)	83 (34.0)	176 (32.1)	66 (30.8)	106 (31.6)	135 (31.9)	307 (31.6)
Not Hispanic or Latino	56 (58.9)	109 (57.4)	122 (64.9)	287 (60.7)	37 (46.3)	79 (48.2)	98 (54.7)	214 (50.6)	80 (59.7)	83 (48.5)	111 (45.5)	274 (49.9)	117 (54.7)	162 (48.4)	209 (49.4)	488 (50.2)
Not reported	11 (11.6)	23 (12.1)	20 (10.6)	54 (11.4)	6 (7.5)	14 (8.5)	17 (9.5)	37 (8.7)	11 (8.2)	21 (12.3)	29 (11.9)	61 (11.1)	17 (7.9)	35 (10.4)	46 (10.9)	98 (10.1)
Unknown	5 (5.3)	15 (7.9)	7 (3.7)	27 (5.7)	9 (11.3)	20 (12.2)	12 (6.7)	41 (9.7)	5 (3.7)	12 (7.0)	21 (8.6)	38 (6.9)	14 (6.5)	32 (9.6)	33 (7.8)	79 (8.1)
Race — no. (%)																
White	43 (45.3)	67 (35.3)	71 (37.8)	181 (38.3)	38 (47.5)	66 (40.2)	71 (39.7)	175 (41.4)	52 (38.8)	60 (35.1)	84 (34.4)	196 (35.7)	90 (42.1)	126 (37.6)	155 (36.6)	371 (38.2)
Black or African American	14 (14.7)	43 (22.6)	33 (17.6)	90 (19.0)	7 (8.8)	26 (15.9)	38 (21.2)	71 (16.8)	22 (16.4)	7 (4.1)	41 (16.8)	89 (16.2)	29 (13.6)	52 (15.5)	79 (18.7)	160 (16.5)
Asian	3 (3.2)	13 (6.8)	19 (10.1)	35 (7.4)	8 (10.0)	11 (6.7)	10 (5.6)	29 (6.9)	11 (8.2)	8 (4.7)	8 (3.3)	27 (4.9)	19 (8.9)	19 (5.7)	18 (4.3)	56 (5.8)
American Indian or Alaska Native	0	2 (1.1)	0	2 (0.4)	0	1 (0.6)	0	1 (0.2)	1 (0.7)	0	1 (0.4)	2 (0.4)	1 (0.5)	1 (0.3)	1 (0.2)	3 (0.3)
Native Hawaiian or Pacific Islander	1 (1.1)	1 (0.5)	2 (1.1)	4 (0.8)	0	0	0	0	0	1 (0.6)	0	1 (0.2)	0	1 (0.3)	0	1 (0.1)
Not reported	20 (21.1)	44 (23.2)	32 (17.0)	96 (20.3)	20 (25.0)	44 (26.8)	42 (23.5)	106 (25.1)	24 (17.9)	46 (26.9)	76 (31.1)	146 (26.6)	44 (20.6)	90 (26.9)	118 (27.9)	252 (25.9)
Other	14 (14.7)	20 (10.5)	31 (16.5)	65 (13.7)	7 (8.8)	16 (9.8)	18 (10.1)	41 (9.7)	24 (17.9)	30 (17.5)	34 (13.9)	88 (16.0)	31 (14.5)	46 (13.7)	52 (12.3)	129 (13.3)
Mean weight — kg	87.13±21.34	92.22±23.39	88.83±22.47	89.83±22.66	87.43±20.27	90.26±21.85	95.25±27.61	91.90±24.40	90.48±22.75	89.13±22.60	88.81±23.23	89.32±22.89	89.35±21.86	89.69±22.21	91.61±25.4	90.46±23.59
Body-mass index†	31.33±8.23	32.26±7.80	30.65±7.16	31.44±7.67	30.58±6.70	31.68±7.21	32.73±8.66	31.93±7.82	31.48±7.57	30.85±7.60	31.33±7.06	31.22±7.34	31.14±7.25	31.26±7.41	31.94±7.82	31.53±7.56
CRP, mg/L, n, median (min,max)	89, 102.000 (4.00;382.80)	181, 105.480 (7.00;399.00)	163, 108.202 (1.00;1260.00)	433, 105.000 (1.00;1260.00)	77, 193.780 (9.00;603.01)	158, 198.320 (5.00;591.00)	167, 185.700 (8.68;662.00)	402, 193.890 (5.00;692.00)	127, 141.503 (1.70;476.81)	156, 157.102 (5.00;819.94)	230, 163.900 (1.20;454.21)	513, 152.000 (1.20;819.94)	204, 152.500 (1.70;603.01)	314, 180.122 (5.00;819.94)	397, 173.803 (1.20;652.00)	915, 173.003 (1.20;819.94)
IL-6, pg/ml, n, median (min,max)	86, 61.585 (9.10;571.26)	169, 53.350 (9.10;1713.25)	162, 58.250 (9.10;2771.49)	417, 58.360 (9.10;2771.49)	73, 163.860 (9.10;2324.82)	143, 169.540 (9.59;6531.58)	156, 164.385 (9.59;21545.37)	372, 164.695 (9.10;21545.37)	127, 67.760 (9.59;2176.98)	150, 67.795 (6.82;1436.60)	213, 95.210 (9.10;1032.44)	490, 77.790 (6.82;2176.98)	200, 85.610 (9.10;2324.82)	293, 116.140 (6.82;6531.58)	369, 125.990 (9.10;21545.37)	862, 114.375 (6.82;21545.37)
Comorbidities — no. (%)																
Hypertension	46 (48.4)	93 (48.9)	100 (53.2)	239 (50.5)	36 (45.0)	69 (42.1)	88 (49.2)	193 (45.6)	80 (59.7)	82 (48.0)	132 (54.1)	294 (53.6)	116 (54.2)	151 (45.1)	220 (52.0)	487 (50.1)
Diabetes	19 (20.0)	38 (20.0)	33 (17.6)	90 (19.0)	12 (15.0)	38 (23.2)	27 (15.1)	77 (18.2)	32 (23.9)	36 (21.1)	41 (16.8)	109 (19.9)	44 (20.6)	74 (22.1)	68 (16.1)	186 (19.1)
Obesity‡	43 (45.3)	98 (51.6)	75 (39.9)	216 (45.7)	36 (45.0)	71 (43.3)	96 (53.6)	203 (48.0)	61 (45.5)	67 (39.2)	116 (47.5)	244 (44.4)	97 (45.3)	138 (41.2)	212 (50.1)	447 (46.0)
Systemic corticosteroid use — no. (%)	26 (27.4)	53 (27.9)	50 (26.6)	129 (27.3)	22 (27.5)	37 (22.6)	50 (27.9)	109 (25.8)	47 (35.1)	57 (33.3)	87 (35.7)	191 (34.8)	69 (32.2)	94 (28.1)	137 (32.4)	300 (30.9)

*Plus-minus values are means ±SD. CRP denotes C-reactive protein, EITT exploratory intention-to-treat, IL-6 interleukin-6, IV intravenous, SD standard deviation, Q quartile.

†The body-mass index is the weight in kilograms divided by the square of the height in meters.

‡Patients with available data.

§BMI >30 kg/m².

Table S4. Phase 3 (Cohort 1): Summary of Primary and Selected Secondary Efficacy End Points in Critical Strata*

Outcome	Critical Patients Receiving Mechanical Ventilation at Baseline (ITT)					Critical Patients <u>Not</u> Receiving Mechanical Ventilation at Baseline (ITT)					All Critical Patients (ITT)				
	Placebo Group (N=62)	Sarilu mab 200 mg IV Group (N=104)	Sarilu mab 400 mg IV Group (N=132)	Risk difference Sarilu mab 200 mg IV vs placebo	Risk difference Sarilu mab 400 mg IV vs placebo	Placebo Group (N=108)	Sarilu mab 200 mg IV Group (N=138)	Sarilu mab 400 mg IV Group (N=204)	Risk difference Sarilu mab 200 mg IV vs placebo	Risk difference Sarilu mab 400 mg IV vs placebo	Placebo Group (N=170)	Sarilu mab 200 mg IV Group (N=242)	Sarilu mab 400 mg IV Group (N=338)	Risk difference Sarilu mab 200 mg IV vs placebo	Risk difference Sarilu mab 400 mg IV vs placebo
	n (%) [95% CI]	n (%) [95% CI]	n (%) [95% CI]	[95% CI]	[95% CI]	n (%) [95% CI]	n (%) [95% CI]	n (%) [95% CI]	[95% CI]	[95% CI]	n (%) [95% CI]	n (%) [95% CI]	n (%) [95% CI]	[95% CI]	[95% CI]
Proportion with 1-point improvement (day 22)	22 (35.5%) [23.6, 47.4]	45 (43.3%) [33.7, 52.8]	57 (43.2%) [34.7, 51.6]	+7.1% [-8.4, 21.7]	+7.5% [-7.4, 21.3]†	70 (64.8%) [55.8, 73.8]	92 (66.7%) [58.8, 74.5]	117 (57.4%) [50.6, 64.1]	+2.0% [-9.7, 13.9]	-7.5% [-18.3, 3.9]	92 (54.1%) [46.6, 61.6]	137 (56.6%) [50.4, 62.9]	174 (51.5%) [46.2, 56.8]	+2.7% [-7.0, 12.4]	-2.6% [-11.7, 6.5]
Proportion who died (day 29)	26 (41.9%) [29.7, 54.2]	35 (33.7%) [24.6, 42.7]	48 (36.4%) [28.2, 44.6]	-7.7% [-22.8, 7.2]	-5.5% [-20.2, 8.7]	17 (15.7%) [8.9, 22.6]	25 (18.1%) [11.7, 24.5]	54 (26.5%) [20.4, 32.5]	+2.3% [-7.5, 11.5]	+10.7% [0.9, 19.3]	43 (25.3%) [18.8, 31.8]	60 (24.8%) [19.4, 30.2]	103 (30.5%) [25.6, 35.4]	-0.6% [-9.3, 7.7]	+5.2% [-3.3, 13.0]
Proportion who died (day 60)	32 (51.6%) [39.2, 64.1]	39 (37.5%) [28.2, 46.8]	52 (39.4%) [31.1, 47.7]	-13.3% [-28.2, 2.3]	-11.9% [-26.4, 2.9]	27 (25.0%) [16.8, 33.2]	31 (22.5%) [15.5, 29.4]	61 (29.9%) [23.6, 36.2]	-2.6% [-13.5, 7.9]	+4.8% [-5.8, 14.6]	59 (34.7%) [27.6, 41.9]	70 (28.9%) [23.2, 34.6]	114 (33.7%) [28.7, 38.8]	-5.8% [-15.0, 3.2]	-1.0% [-9.8, 7.6]
Proportion who	16 (25.8%)	32 (30.8%)	42 (31.8%)	+5.2% [-9.4, 18.6]	+5.7% [-8.4, 18.2]	69 (63.9%)	88 (63.8%)	111 (54.4%)	+0.1% [-11.7, 12.2]	-9.5% [-20.4, 2.0]	85 (50.0%)	120 (49.6%)	153 (45.3%)	+0.2% [-9.5, 9.9]	-4.7% [-13.8, 4.4]

recover (day 22)*	[14.9, 36.7]	[21.9, 39.6]	[23.9, 39.8]			[54.8, 72.9]	[55.7, 71.8]	[47.6, 61.2]			[42.5, 57.5]	[43.3, 55.9]	[40.0, 50.6]		
Proportion alive not requiring MV/ECMO (day 22)	22 (35.5%) [23.6, 47.4]	48 (46.2%) [36.6, 55.7]	59 (44.7%) [36.2, 53.2]	+9.8% [-5.8, 24.3]	+8.8% [-6.1, 22.6]	78 (72.2%) [63.8, 80.7]	106 (76.8%) [69.8, 83.9]	130 (63.7%) [57.1, 70.3]	+4.8% [-6.0, 15.9]	-8.6% [-18.8, 2.4]	100 (58.8%) [51.4, 66.2]	154 (63.6%) [57.6, 69.7]	189 (55.9%) [50.6, 61.2]	+5.2% [-4.3, 14.7]	-2.9% [-11.8, 6.2]
Proportion with 2-point improvement (day 22)	21 (33.9%) [22.1, 45.7]	40 (38.5%) [29.1, 47.8]	53 (40.2%) [31.8, 48.5]	+4.1% [-11.2, 18.5]	+5.9% [-8.9, 19.5]	68 (63.0%) [53.9, 72.1]	87 (63.0%) [55.0, 71.1]	108 (52.9%) [46.1, 59.8]	+0.3% [-11.6, 12.4]	-10.1% [-21.1, 1.4]	89 (52.4%) [44.8, 59.9]	127 (52.5%) [46.2, 58.8]	161 (47.6%) [42.3, 53.0]	+0.5% [-9.2, 10.2]	-4.7% [-13.8, 4.5]
Proportion discharged alive (day 22)	14 (22.6%) [12.2, 33.0]	28 (26.9%) [18.4, 35.4]	35 (26.5%) [19.0, 34.0]	+4.5% [-9.7, 17.3]	+3.7% [-10.0, 5.6]	67 (62.0%) [52.9, 71.2]	87 (63.0%) [55.0, 71.1]	109 (53.4%) [46.6, 60.3]	+1.2% [-10.8, 13.3]	-8.6% [-19.6, 3.0]	81 (47.6%) [40.1, 55.2]	115 (47.5%) [41.2, 53.8]	144 (42.6%) [37.3, 47.9]	+0.4% [-9.3, 10.1]	-5.0% [-14.1, 4.1]

*ECMO denotes extracorporeal membrane oxygenation, IV intravenous, MV mechanical ventilation.

*Discharged, or alive without supplemental oxygen us or at pre-COVID-19 oxygen use.

†P value = 0.3261

Green = primary end point; blue = key secondary end point; orange = other secondary end points.

Positive risk differences indicate an effect favoring sarilumab for all end points except for the proportion who die by day 29 or day 60.

Table S5. Phase 3 (Cohort 1): Summary of Primary and Selected Secondary Efficacy End Points in Severe and MSOD Strata*

Outcome	Severe patients (EITT)					MSOD patients (EITT)				
	Placebo Group (N=70)	Sarilumab 200 mg IV Group (N=140)	Sarilumab 400 mg IV Group (N=137)	Risk difference Sarilumab 200 mg IV vs placebo	Risk difference Sarilumab 400 mg IV vs placebo	Placebo Group (N=46)	Sarilumab 200 mg IV Group (N=95)	Sarilumab 400 mg IV Group (N=92)	Risk difference Sarilumab 200 mg IV vs placebo	Risk difference Sarilumab 400 mg IV vs placebo
	no. (%) [95% CI]	no. (%) [95% CI]	no. (%) [95% CI]	[95% CI]	[95% CI]	no. (%) [95% CI]	no. (%) [95% CI]	no. (%) [95% CI]	[95% CI]	[95% CI]
Proportion with 1-point improvement (day 22)	58 (82.9%) [74.0–91.7]	116 (82.9%) [76.6–89.1]	108 (78.8%) [72.0–85.7]	-0.0% [-10.1–11.7]	-4.0% [-14.4–8.0]	16 (34.8%) [21.0–48.5]	36 (37.9%) [28.1–47.7]	30 (32.6%) [23.0–42.2]	+3.1% [-14.0–18.8]	-2.2% [-19.1–13.6]
Proportion who died (day 29)	8 (11.4%) [4.0–18.9]	11 (7.9%) [3.4–12.3]	16 (11.7%) [6.3–17.1]	-3.6% [-13.7–4.4]	+0.3% [-10.2–8.8]	13 (28.3%) [15.2–41.3]	36 (37.9%) [28.1–47.7]	38 (41.3%) [31.2–51.4]	+9.6% [-7.3–24.5]	+13.0% [-4.2–28.0]
Proportion who died (day 60)	9 (12.9%) [5.0–20.7]	12 (8.6%) [3.9–13.2]	21 (15.3%) [9.3–21.4]	-4.3% [-14.7–4.1]	+2.6% [-8.4–11.7]	16 (34.8%) [21.0–48.5]	40 (42.1%) [32.2–52.0]	40 (43.5%) [33.3–53.6]	+7.3% [-10.0–23.0]	+8.6% [-8.7–24.5]
Proportion who recover (day 22) [†]	59 (84.3%) [75.8–92.8]	117 (83.6%) [77.4–89.7]	109 (79.6%) [72.8–86.3]	-0.8% [-10.5–10.8]	-4.7% [-14.8–7.1]	11 (23.9%) [11.6–36.2]	29 (30.5%) [21.3–39.8]	22 (23.9%) [15.2–32.6]	+6.6% [-9.7–20.8]	-0.1% [-16.1–13.8]
Proportion alive not requiring MV/ECMO (day 22)	60 (85.7%) [77.5–93.9]	126 (90.0%) [85.0–95.0]	115 (83.9%) [77.8–90.1]	+4.2% [-4.6–15.1]	-1.8% [-11.3–9.5]	17 (37.0%) [23.0–50.9]	38 (40.0%) [30.1–49.9]	32 (34.8%) [25.1–44.5]	+3.0% [-14.2–19.0]	-2.3% [-19.3–13.8]

Proportion with 2-point improvement (day 22)	57 (81.4%) [72.3–90.5]	114 (81.4%) [75.0–87.9]	108 (78.8%) [72.0–85.7]	-0.1% [-10.4–12.0]	-2.6% [-13.2–9.6]	14 (30.4%) [17.1–43.7]	33 (34.7%) [25.2–44.3]	28 (30.4%) [21.0, 39.8]	+4.3% [-12.6–19.5]	-0.0% [-16.7–15.2]
Proportion discharged alive (day 22)	58 (82.9%) [74.0–91.7]	115 (82.1%) [75.8–88.5]	108 (78.8%) [72.0–85.7]	-0.8% [-10.8–11.1]	-4.0% [-14.4–8.0]	11 (23.9%) [11.6–36.2]	24 (25.3%) [16.5–34.0]	16 (17.4%) [9.6–25.1]	+1.3% [-14.6–15.3]	-6.7% [-22.1–6.8]

*Positive risk differences indicate an effect favoring sarilumab for all end points except for the proportion who die by day 29 or day 60. ECMO denotes extracorporeal membrane oxygenation, IV intravenous, MV mechanical ventilation.

†Discharged, or alive without supplemental oxygen use or at pre-COVID-19 oxygen use.

Table S6. Phase 3 (Cohort 1) – Critical Stratum: Overview of Adverse Events (Safety Population)*

	Critical patients receiving mechanical ventilation at baseline			Critical patients <u>not</u> receiving mechanical ventilation at baseline			All critical patients		
	Placebo Group (N=62)	Sarilumab 200 mg IV Group (N=104)	Sarilumab 400 mg IV Group (N=132)	Placebo Group (N=108)	Sarilumab 200 mg IV Group (N=138)	Sarilumab 400 mg IV Group (N=204)	Placebo Group (N=170)	Sarilumab 200 mg IV Group (N=242)	Sarilumab 400 mg IV Group (N=338)
TEAEs — total no.	139	217	259	130	176	280	269	393	544
SAEs — total no.	103	143	174	96	114	183	199	257	359
AESIs — total no.	61	102	128	49	89	124	110	191	255
Serious AESIs — total no.	25	28	43	15	27	27	40	55	70
Patients with any TEAE — no. (%)	51 (82.3)	81 (77.9)	106 (80.3)	57 (52.8)	76 (55.1)	125 (61.3)	108 (63.5)	157 (64.9)	233 (68.9)
Patients with any SAE — no. (%)	44 (71.0)	65 (62.5)	88 (66.7)	45 (41.7)	54 (39.1)	93 (45.6)	89 (52.4)	119 (49.2)	183 (54.1)
Patients with any AESI — no. (%)	31 (50.0)	56 (53.8)	71 (53.8)	30 (27.8)	51 (37.0)	77 (37.7)	61 (35.9)	107 (44.2)	150 (44.4)
Patients with any serious AESI — no. (%)	14 (22.6)	21 (20.2)	32 (24.2)	10 (9.3)	16 (11.6)	19 (9.3)	24 (14.1)	37 (15.3)	51 (15.1)
Patients with any TEAE leading to death — no. (%)	32 (51.6)	38 (36.5)	50 (37.9)	27 (25.0)	31 (22.5)	59 (28.9)	59 (34.7)	69 (28.5)	110 (32.5)
Patients with any TEAE leading to withdrawal from the study drug — no. (%)	2 (3.2)	5 (4.8)	4 (3.0)	4 (3.7)	0	3 (1.5)	6 (3.5)	5 (2.1)	7 (2.1)
Patients with any TEAE leading to study infusion interruption — no. (%)	5 (8.1)	5 (4.8)	13 (9.8)	2 (1.9)	3 (2.2)	5 (2.5)	7 (4.1)	8 (3.3)	18 (5.3)
Related TEAEs — total no.	25	57	77	36	42	71	61	99	150
Related SAEs — total no.	8	21	24	14	10	28	22	31	53
Related AESIs — total no.	24	43	69	27	41	63	51	84	133
Related serious AESIs — total no.	7	7	16	5	9	20	12	16	36
Patients with related TEAE — no. (%)	17 (27.4)	31 (29.8)	46 (34.8)	21 (19.4)	26 (18.8)	48 (23.5)	38 (22.4)	57 (23.6)	96 (28.4)
Patients with related SAE — no. (%)	8 (12.9)	13 (12.5)	18 (13.6)	9 (8.3)	7 (5.1)	19 (9.3)	17 (10.0)	20 (8.3)	38 (11.2)

Patients with related AESI — no. (%)	16 (25.8)	28 (26.9)	44 (33.3)	17 (15.7)	25 (18.1)	45 (22.1)	33 (19.4)	53 (21.9)	90 (26.6)
Patients with related serious AESI — no. (%)	7 (11.3)	6 (5.8)	15 (11.4)	3 (2.8)	6 (4.3)	14 (6.9)	10 (5.9)	12 (5.0)	29 (8.6)

*AESI denotes adverse event of special interest, IV intravenous, TEAE treatment-emergent adverse event, SAE serious adverse event.

Table S7. Phase 3 (Cohort 1) – Severe and MSOD Strata: Overview of Adverse Events (Safety Population)*

	Severe Patients			MSOD Patients		
	Placebo Group (N=70)	Sarilumab 200 mg IV Group (N=140)	Sarilumab 400 mg IV Group (N=137)	Placebo Group (N=46)	Sarilumab 200 mg IV Group (N=95)	Sarilumab 400 mg IV Group (N=92)
TEAEs — total no.	28	58	100	86	187	181
SAEs — total no.	22	38	71	39	125	117
AESIs — total no.	8	24	45	54	81	90
Serious AESIs — total no.	2	4	16	7	19	26
Patients with any TEAE — no. (%)	14 (20.0)	36 (25.7)	47 (34.3)	37 (80.4)	74 (77.9)	73 (79.3)
Patients with any SAE — no. (%)	11 (15.7)	23 (16.4)	30 (21.9)	27 (58.7)	67 (70.5)	58 (63.0)
Patients with any AESI — no. (%)	5 (7.1)	20 (14.3)	31 (22.6)	28 (60.9)	45 (47.4)	51 (55.4)
Patients with any serious AESI — no. (%)	1 (1.4)	3 (2.1)	10 (7.3)	7 (15.2)	14 (14.7)	21 (22.8)
Patients with any TEAE leading to death — no. (%)	9 (12.9)	12 (8.6)	19 (13.9)	16 (34.8)	40 (42.1)	39 (42.4)
Patients with any TEAE leading to withdrawal from the study drug — no. (%)	1 (1.4)	0	0	3 (6.5)	2 (2.1)	1 (1.1)
Patients with any TEAE leading to study infusion interruption — no. (%)	0	0	1 (0.7)	0	1 (1.1)	3 (3.3)
Related TEAEs — total no.	2	23	18	30	36	40
Related SAEs — total no.	0	9	6	2	11	14
Related AESIs — total no.	2	14	16	30	33	36
Related serious AESIs — total no.	0	0	4	2	8	10
Patients with related TEAE — no. (%)	2 (2.9)	13 (9.3)	15 (10.9)	17 (37.0)	23 (24.2)	24 (26.1)
Patients with related SAE — no. (%)	0	3 (2.1)	5 (3.6)	2 (4.3)	7 (7.4)	10 (10.9)
Patients with related AESI — no. (%)	2 (2.9)	11 (7.9)	14 (10.2)	17 (37.0)	23 (24.2)	23 (25.0)
Patients with related serious AESI — no. (%)	0	0	3 (2.2)	2 (4.3)	6 (6.3)	9 (9.8)

*AESI denotes adverse event of special interest, IV intravenous, TEAE treatment-emergent adverse event, SAE serious adverse event.

Table S8. Phase 3 (Cohort 1) – Severe and MSOD Strata: Treatment-Emergent Serious Adverse Events and Adverse Events of Special Interest Occurring in ≥5% of Patients in Any Group (Safety Population)*

System Organ Class Preferred Term	Severe Patients			MSOD Patients		
	Placebo Group (N=70)	Sarilumab 200 mg IV Group (N=140)	Sarilumab 400 mg IV Group (N=137)	Placebo Group (N=46)	Sarilumab 200 mg IV Group (N=95)	Sarilumab 400 mg IV Group (N=92)
SAEs						
SAEs — no.	22	38	71	39	125	117
Patients with ≥1 SAE — no. (%)	11 (15.7)	23 (16.4)	30 (21.9)	27 (58.7)	67 (70.5)	58 (63.0)
Infections and infestations — no. (%)						
Covid-19	0 (0.0)	2 (1.4)	5 (3.6)	5 (10.9)	12 (12.6)	9 (9.8)
Septic shock	0 (0.0)	1 (0.7)	2 (1.5)	0 (0.0)	4 (4.2)	5 (5.4)
Cardiac disorders — no. (%)						
Cardiac arrest	2 (2.9)	4 (2.9)	3 (2.2)	6 (13.0)	9 (9.5)	9 (9.8)
Respiratory, thoracic, and mediastinal disorders — no. (%)						
Respiratory failure	2 (2.9)	5 (3.6)	4 (2.9)	2 (4.3)	10 (10.5)	7 (7.6)
Acute respiratory failure	1 (1.4)	4 (2.9)	4 (2.9)	1 (2.2)	3 (3.2)	2 (2.2)
Vascular disorders — no. (%)						
Hypotension	0 (0.0)	0 (0.0)	1 (0.7)	0 (0.0)	2 (2.1)	5 (5.4)
AESIs						
AESIs — no. (%)	8	24	45	54	81	90
Patients with ≥1 AESI — no. (%)	5 (7.1)	20 (14.3)	31 (22.6)	28 (60.9)	45 (47.4)	51 (55.4)
Investigations — no. (%)						
Alanine aminotransferase increased	1 (1.4)	5 (3.6)	11 (8.0)	9 (19.6)	8 (8.4)	14 (15.2)
Aspartate aminotransferase increased	3 (4.3)	6 (4.3)	8 (5.8)	12 (26.1)	13 (13.7)	14 (15.2)
Transaminases increased	1 (1.4)	3 (2.1)	4 (2.9)	4 (8.7)	6 (6.3)	3 (3.3)
Liver function test increased	0 (0.0)	2 (1.4)	1 (0.7)	3 (6.5)	2 (2.1)	5 (5.4)
Infections and infestations — no. (%)						
Bacteremia	0 (0.0)	1 (0.7)	2 (1.5)	3 (6.5)	4 (4.2)	4 (4.3)
Pneumonia	0 (0.0)	0 (0.0)	4 (2.9)	0	5 (5.3)	3 (3.3)
Staphylococcal infection	0 (0.0)	0 (0.0)	0 (0.0)	3 (6.5)	6 (6.3)	3 (3.3)
Pneumonia klebsiella	0 (0.0)	0 (0.0)	0 (0.0)	4 (8.7)	3 (3.2)	2 (2.2)

*AESI denotes adverse event of special interest, IV intravenous, SAE serious adverse event.

Table S9. Association Between the *IL6R* Shedding Variant rs2228145:C and COVID-19 Outcomes*

Phenotype	Study	Cases (no.)	Controls (no.)	Odds ratio (LCI, UCI)	P value
SARS-CoV-2–positive and hospitalized vs. population controls	COVID-19 Host Genetics Initiative Meta-Analysis	12,888	1,295,966	0.96 (0.93, 0.99)	0.007
SARS-CoV-2–positive and hospitalized vs. not hospitalized	COVID-19 Host Genetics Initiative Meta-Analysis	5,773	15,497	0.96 (0.90, 1.01)	0.130
SARS-CoV-2–positive and with severe disease vs. population controls	COVID-19 Host Genetics Initiative Meta-Analysis	5,780	1,115,203	0.97 (0.92, 1.02)	0.190

*LCI denotes lower confidence interval, UCI upper confidence interval.

We also considered two severity phenotypes, 1) hospitalization among PCR-confirmed SARS-CoV-2–infected individuals and 2) ventilation or death among SARS-CoV-2–infected individuals as compared with population controls, but these had less statistical power to detect associations. We found numerically lower odds of hospitalization among SARS-CoV-2–infected individuals (N=5773) compared with SARS-CoV-2–infected controls who were not hospitalized (N=15,497; TOR 0.96; 95% CI, 0.90 to 1.01; P=0.13) and lower odds of severe Covid-19 among SARS-CoV-2–infected individuals who required ventilation or died (N=5780) compared with population-level controls (OR 0.97; 95% CI, 0.92 to 1.02; P=0.19). These results were not statistically significant, suggesting larger sample sizes may be required. Altogether, these genetic findings are consistent with approximately 3% to 4% risk reduction for hospitalization and severe disease and provide support for IL-6 signaling blockade in Covid-19 management.

Appendix References

1. The COVID-19 Host Genetics Initiative. The COVID-19 Host Genetics Initiative, a global initiative to elucidate the role of host genetic factors in susceptibility and severity of the SARS-CoV-2 virus pandemic. *Eur J Hum Genet* 2020;28:715-8.
2. Zhou W, Nielsen JB, Fritsche LG, et al. Efficiently controlling for case-control imbalance and sample relatedness in large-scale genetic association studies. *Nat Genet* 2018;50:1335-41.
3. Willer CJ, Li Y, Abecasis GR. METAL: fast and efficient meta-analysis of genomewide association scans. *Bioinformatics* 2010;26:2190-1.