

**Title:** Risk factors associated with severe outcomes of COVID-19: An updated rapid review to inform national guidance on vaccine prioritization in Canada

**Authors:** Michelle Gates, PhD<sup>1</sup> ([mgates1@ualberta.ca](mailto:mgates1@ualberta.ca)); Jennifer Pillay, MSc<sup>1</sup>; Aireen Wingert, MPH<sup>1</sup>; Samantha Guitard, MSc<sup>1</sup>; Sholeh Rahman, MSc<sup>1</sup>; Bernadette Zakher, MD<sup>1</sup>; Allison Gates, PhD<sup>1</sup>; Lisa Hartling, PhD<sup>1</sup>.

<sup>1</sup> Alberta Research Centre for Health Evidence, University of Alberta, Edmonton, Alberta, Canada

**Funding statement:** This study was completed under contract to the Public Health Agency of Canada, contract #4600001536. LH is supported by a Tier 1 Canada Research Chair in knowledge synthesis and translation.

**Declaration of competing interests:** The authors have no competing interests to declare.

## ABSTRACT

**Background:** To inform vaccine prioritization guidance in Canada, we reviewed evidence on the magnitude of association between risk factors and severe outcomes of COVID-19.

**Methods:** We updated our existing review by searching online databases and websites for cohort studies providing multivariate adjusted associations. One author screened studies and extracted data. Two authors estimated the magnitude of association between exposures and outcomes as little-to-no (odds, risk, or hazard ratio <2.0, or >0.50 for reduction), large (2.0-3.9, or 0.50-0.26 for reduction), or very large ( $\geq 4.0$ , or  $\leq 0.25$  for reduction), and rated the evidence certainty using GRADE.

**Results:** Of 11,734 unique records we included 135 reports. There is probably (moderate certainty) at least a large increase in mortality from COVID-19 among people aged 60-69 vs. <60 years (11 studies, n=517,217), with  $\geq 2$  vs. no comorbidities (4 studies, n=189,608), and for people with (vs. without): Down syndrome (1 study, n>8 million), type 1 and 2 diabetes (1 study, n>8 million), end-stage kidney disease (1 study, n>8 million), epilepsy (1 study, n>8 million), motor neuron disease, multiple sclerosis, myasthenia gravis, or Huntington's disease (as a grouping; 1 study, n>8 million). The magnitude of association with mortality is probably very large for Down syndrome and may (low certainty) be very large for age 60-69 years, and diabetes. There is probably little-to-no increase in severe outcomes with several cardiovascular and respiratory conditions, and for adult males vs. females.

**Interpretation:** Future research should focus on risk factors where evidence is limited in quantity (i.e., no or few small studies) or quality. This may include social factors, some rare conditions, the pediatric population, combinations of comorbidities that increase risk, and long-term outcomes.

**Systematic review registration:** PROSPERO #CRD42021230185.

## INTRODUCTION

The novel coronavirus disease 2019 (COVID-19) became a worldwide public health concern in early 2020 [1]. About 20% of affected people will experience severe disease (e.g., requiring hospitalization), and some may have long-lasting medical complications [2]. In late 2020, Health Canada approved two vaccines for the prevention of COVID-19 (Pfizer-BioNTech COVID-19 Vaccine and Moderna COVID-19 Vaccine); this has been followed by the approval of others and continued review of emerging vaccine candidates [3]. As anticipated, vaccine distribution has been constrained by logistical challenges and limited supply [4-6], necessitating prioritization of populations for vaccination [5, 6].

The National Advisory Committee on Immunization (NACI) developed preliminary vaccine prioritization guidance in late 2020 *“for the efficient, effective and equitable allocation of safe, efficacious severe acute respiratory syndrome coronavirus 2 (SARS-CoV-2) vaccines in the context of staggered arrival of vaccines”* [5, 6]. In addition to reviewing evidence on the burden of illness and vaccine characteristics, NACI used its Ethics, Equity, Feasibility and Acceptability (EEFA) framework [7] and evidence-informed Equity Matrix [8] to achieve the goal of their prioritization guidance. The Equity Matrix considers biological and social risk factors (termed P<sup>2</sup>ROGRESS And Other Factors, informed by the PROGRESS-Plus model [9]) that may result in inequitable health outcomes across a population. The findings of a rapid review of risk factors for severe outcomes of COVID-19 conducted by our research group [10] helped populate the Equity Matrix, and informed NACI’s guidance. This initial review found increasing age (>60 years and particularly >70 years) to be among the strongest risk factors for severe outcomes of COVID-19 [10]. Since this time, numerous relevant primary studies have been published. To inform subsequent [11, 12] and future guidance statements, we performed an updated rapid review to determine the magnitude of association between P<sup>2</sup>ROGRESS And Other Factors and severe outcomes of COVID-19.

## METHODS

### Review Approach

Detailed methods are in our pre-defined protocol (PROSPERO #CRD42021230185), and described briefly herein. We followed traditional systematic review methods [13] with modifications to accommodate the expedited timeline needed to inform NACI’s guidance. Single experienced reviewers selected studies and extracted data, with piloting to maintain rigour. We restricted the scope to large, good quality studies with high relevance to Canada.

The eligibility criteria were informed by stakeholders at NACI and the Public Health Agency of Canada; these individuals were not involved in review conduct. This review is reported according to the Preferred Reporting Items for Systematic Reviews and Meta-Analyses (PRISMA) statement [14].

### **Eligibility criteria**

Table 1 details our eligibility criteria. We included published (or accepted for publication) cohort studies reporting multivariate adjusted associations between P<sup>2</sup>ROGRESS And Other Factors and severe outcomes of COVID-19 among: the general population; people with COVID-19; people hospitalized with COVID-19; people with severe COVID-19 (as defined by study authors); children in any of the aforementioned populations. Canadian reports of any design with any analysis type were eligible. For social risk factors, we included only Canadian reports because these were considered as most relevant by NACI.

We applied criteria at the selection stage to include only the most informative, good quality studies. Studies needed to take place in Organization for Economic Cooperation and Development (OECD) countries and include ≥1,000 participants (i.e., sufficiently powered for multivariate adjustment). Adjustment by age and sex was required in all studies, except Canadian reports. Findings for age and/or sex required adjustment for at least one pre-existing condition, and findings for most pre-existing conditions required adjustment for body mass index (BMI). After screening, we loosened our selection criteria for studies among children, requiring a sample size of ≥300 participants and adjustment by age and sex (but not BMI), as limited evidence was available for this population.

When no primary studies were located on a risk factor of high relevance to NACI, we included systematic reviews with broader selection criteria.

### **Literature search and study selection**

Full details of the literature search are in Appendix 1. A research librarian searched online databases (Ovid Medline® ALL 1946-, Epistemonikos COVID-19 in L-OVE Platform for individual predictors of outcomes; 2-3 December 2020) and websites suggested by NACI (6 January - 3 February, 2021). We updated the Medline and website searches in April 2021 for the pediatric population, immune compromise, and autoimmune conditions, to further inform NACI's guidance for risk factors. We exported records to Endnote X9 (Clarivate Analytics, Philadelphia, PA), removed duplicates and pre-

prints, then uploaded the records to Covidence systematic review platform (<https://www.covidence.org/>). After piloting, a single experienced reviewer screened each record by title and abstract, then by full text. A second reviewer was consulted as needed.

Following screening, gaps in evidence (i.e., no study meeting our criteria) were apparent for asplenia/splenic dysfunction, cystic fibrosis, sickle cell disease,  $\beta$ -thalassemia, and learning disability (potentially important based on inclusion in priority lists from other jurisdictions [15-18]). To locate evidence for these, we scanned all studies excluded based on sample size (<1,000 participants), preprints, and systematic reviews that we had located during our scoping exercises (September, 2020) using Smart Searches in Endnote. On 18 February 2021, we conducted targeted searches in Ovid Medline® ALL 1946- for studies and reviews on these risk factors.

### **Data extraction**

After piloting, a single reviewer extracted data from each study into Excel (v. 2016; Microsoft Corporation, Redmond, WA): study and population characteristics, exposures, covariates, outcomes and their definitions, findings for multivariate associations. We held regular team meetings to troubleshoot and ensure consistency. Because we attempted to include only good quality studies, we did not formally assess their quality, but recorded potential risk of bias concerns (Appendix 2) for consideration during assessment of the certainty of evidence.

### **Synthesis and drawing conclusions**

Appendix 2 details our approach to synthesis and drawing conclusions. Results from the Canadian studies, none of which met the criteria of having sufficiently adjusted analysis, were not included in the main synthesis and are reported separately. We did not pool findings statistically for any outcome, due to large heterogeneity in comparisons and measures of association, and at least some overlap in populations across studies. Instead, two reviewers reached consensus on a best estimate of the magnitude of association for each outcome (based on adjusted odds [aOR], risk, or hazard ratios): little-to-no (<2.0, or >0.5 for reduction), large (2.0-3.9, or 0.5-0.26 for reduction), or very large ( $\geq 4.0$ , or  $\leq 0.25$  for reduction). Two reviewers assessed the certainty of evidence for each exposure-outcome association, informed by elements of the Grading of Recommendations, Assessment, Development and Evaluations approach [19].

## Ethics approval

Ethics approval was not required.

## RESULTS

### Included studies

Of 11,734 unique records identified, we included 135 reports (Figure 1) [20-154]. Full text exclusions are listed at [<https://doi.org/10.7939/DVN/VDELOG>]. We included one systematic review of case series for  $\beta$ -thalassemia [119]. No studies or reviews were located with relevant findings for asplenia/splenic dysfunction, cystic fibrosis, sickle cell disease, or learning disability. No study reported on long-term outcomes. Table 2 shows a summary of the characteristics of the studies presenting multivariate adjusted findings that were included in the main synthesis (n=124) [20-121, 131-152]; full details by study, including 11 Canadian reports [122-130, 153, 154], are in Appendix 3. The studies contributing multivariate associations originated primarily from the United States (n=55), the United Kingdom (n=15), and Mexico (n=13), and included more than 76 million participants (median 5,327; range 34 to 61,414,470).

### Associations between risk factors and outcomes

Based on stakeholder input, we considered people with confirmed COVID-19 to be the population of highest relevance, thus have focused on these in our presentation of findings. When no data were available from the COVID-19 population for a risk factor-outcome comparison, we relied on findings from the general population. Table 3 summarizes the risk factors showing large or very large multivariate-adjusted associations with severe outcomes. Appendix 2 includes findings for all risk factors and populations investigated in the review. Data supporting the conclusions are available at [<https://doi.org/10.7939/DVN/VDELOG>].

The certainty of evidence was moderate for at least a large increase in mortality from COVID-19 for people aged 60-69 years versus <60 years (11 studies, n=517,217) [24, 48, 63, 68, 71, 84, 92, 93, 98, 101, 106, 113], people with two or more versus no comorbidities (4 studies, n=189,608) [48, 59, 101, 105], and for people with (versus without): Down syndrome (1 study, n>8 million) [35], type 1 and 2 diabetes (1 study, n>8 million) [35], end-stage kidney disease (1 study, n>8 million) [35]; epilepsy (1 study, n>8 million) [35]; motor neuron disease, multiple sclerosis, myasthenia gravis, or Huntington's disease (as a

grouping; 1 study, n>8 million) [35]. The magnitude of association with mortality is probably (moderate certainty) very large for Down syndrome, and may (low certainty) be very large for age 60-69 years, and diabetes. We located no evidence on the combination of conditions that would place people with two or more comorbidities at increased risk.

The certainty of evidence was low for a large increase in mortality or hospitalization among: people with cerebral palsy (1 study, n>8 million); major psychiatric disorder (schizophrenia, schizoaffective disorder, or bipolar disorder, with drug use for the condition in the past 6 months; 1 study, n=11,122) [105]; obesity class III (BMI  $\geq 40$  kg/m<sup>2</sup>) versus normal weight (1 study, n=1,612) [113]; Parkinson's disease (1 study, n>8 million) [35]; sickle cell disease or severe immunodeficiency (1 study, n>8 million) [35]; solid organ transplant (2 studies, n=18,038 for mortality [105, 113]); transplant of any type (3 studies, n=24,227 for hospitalization [49, 64, 105]); kidney transplant (1 study, n>8 million) [35]; recent bone marrow or stem cell transplant (1 study, n>8 million) [35]; metastatic cancer among those <70 years (2 studies, n=38,377) [58, 113]; current or recent (past year) chemotherapy or radiotherapy (past 6 months; 1 study, n>8 million); vasculitis (1 study, n=4,543,249) [135]; pregnancy (any stage; 1 study, n=409,462) [34]; frailty (2 studies, n=404,079) [77, 95]. The magnitude of association with mortality may (low certainty) be very large for recent chemotherapy. There was moderate certainty for a large increase in hospitalization with previous cerebrovascular accident (2 studies, n=12,376) [49, 115].

Among children, there was evidence of moderate certainty for a large increase in hospitalization among those having two or more versus no chronic conditions (1 study, n=804) [137], and evidence of low certainty for a large increase in mortality and hospitalization for children of Black versus White non-Hispanic race/ethnicity (1 study, n=12,198) [146]. There was low certainty for a large reduction in hospitalization for children 0-19 years versus adults aged 50-59 years (1 study, n=2,199) [105], and a large increase in hospitalization for children with one versus no chronic conditions (1 study, n=790) [137], and specifically for children with versus without immunodeficiency or immunosuppression (2 studies, n=21,875) [82, 138], and hypertension (1 study, n=21,116) [82]. Additionally, there was evidence of low certainty for a large increase in severe outcomes (ICU admission, mechanical ventilation, or 'severe disease') among children with versus without: one or more chronic conditions (1 study, n=759 for mechanical ventilation and severe disease [138]; 2 studies, n=1,341 for ICU admission), asthma (1 study, n=21,116) [82], endocrine conditions (1 study, n=5,374) [133], metabolic conditions (1 study, n=5,374) [133], and malignancy (1 study, n=5,374) [133].

There were several risk factors with moderate certainty evidence for little-to-no association with increased severity of COVID-19, for example many pre-existing conditions (notably several cardiovascular and respiratory conditions), and for adult males versus females (Appendix 2).

Table 4 shows the risk factors identified in Canadian reports and potential associations with severe outcomes of COVID-19. All data collected from these studies are in Appendix 2. This evidence was used primarily to draw conclusions about social factors, and was often descriptive and lacking adjustment for important covariates. These studies showed the potential for a large increase in mortality among people living in long-term care (6 reports, n≈2 million) [122, 123, 125, 127, 128], visible minority groups (mainly South Asian, Chinese, Black, Filipino, Latin American, Arab, Southeast Asian, West Asian, Korean, Japanese; 1 report, n=8,796) [129], and people living in the general population (off-reserve) versus First Nations people living on-reserve (1 report, n=9,715) [124].

## **INTERPRETATION**

This review provides a methodologically rigorous synthesis of a large volume of emerging evidence on factors associated with severe outcomes of COVID-19. There is now strong (moderate certainty) evidence of at least a large increase in mortality from COVID-19 among people aged 60 to 69 versus <60 years (and over 70 years from our previous review [117]), people having two or more versus no comorbidities, and for people affected by (versus unaffected): Down syndrome; type 1 and type 2 diabetes; end-stage kidney disease; epilepsy; motor neuron disease, multiple sclerosis, myasthenia gravis, or Huntington's disease.

Our earlier review suggested a potentially large increase in severe outcomes among males versus females, and for people with some pre-existing conditions (heart failure, dementia, liver disease) [10]. The current evidence no longer supports this increased risk, underscoring the importance of interpreting low certainty evidence cautiously, and of continually reviewing emerging data to support vaccine prioritization guidance. There is now relatively strong evidence for little-to-no increase in severe outcomes for several pre-existing diseases, notably many cardiovascular and respiratory conditions. In contrast, many jurisdictions have identified people with these conditions as priorities for vaccination [15-18]. The reason for this is not fully clear, because the evidence on which prioritization decisions are made is often not publically available, and such decisions are informed by multiple considerations (e.g.,



local epidemiology, ethics, risk-benefit analyses, vaccine characteristics and availability [5, 6, 155]) and varying levels of evidence.

A large reliance on unadjusted data may provide some explanation [156]. The data synthesized within this review have the advantage of accounting for the impact of multiple co-existing conditions, social and demographic factors. For example, in a large study (n=418,794) of the general population in the United Kingdom [94], a large increase in hospitalization among people with heart failure (OR 2.24) and chronic obstructive pulmonary disease (OR 2.67) was observed. Following adjustment for age, sex, social factors, BMI, and other chronic conditions, these associations were substantially attenuated to the range of little-to-no association (aOR 1.09 and 1.51, respectively) [94]. We observed similar relationships in other studies. The thresholds of magnitude used to define ‘large’ and ‘very large’ increases in severe outcomes may also impact the conditions prioritized. Finally, there are some rare conditions (e.g., thalassemia, splenic dysfunction) for which to our knowledge, no large and well-adjusted studies have been published. In these cases, governing bodies may need to rely on evidence available for other infectious diseases, or from smaller cohorts suggesting the potential for increased risk [18, 157-160].

The findings of this review, among other considerations, have informed NACI’s vaccine prioritization guidance. Emerging data should continue to be synthesized to improve on the certainty of evidence for some populations and outcomes. Though children seem to be at reduced risk of severe outcomes of COVID-19 compared to adults [161], there are few large, well-adjusted analyses available for children. Therefore, the current evidence about risk factors within this population is of low certainty. However, data is beginning to accumulate; we located six new eligible studies in our April 2021 update search to help inform NACI’s guidance [133, 137, 138, 146, 150, 154]. As we did not locate data to inform the combination of comorbidities that may place a person at increased risk of severe outcomes, a focus on this in future research would be valuable. Information from the development of risk prediction models may also provide insight [162]. Finally, while we looked for studies examining a range of factors based on the “P<sup>2</sup>ROGRESS And Other Factors” framework, the majority of studies focused on medical comorbidities. High quality research on P<sup>2</sup>ROGRESS And Other Factors would allow for a more nuanced approach to optimize vaccine rollout [155].

## **Limitations**

Because we used a rapid approach, there is a small possibility of undetected errors in study selection or data extraction. We mitigated this through piloting and engaging experienced reviewers. Though the findings are most applicable to OECD countries, we often relied on data largely from the United States and other countries without universal healthcare systems. We located no evidence relevant to long-term outcomes.

## **Conclusion**

There is strong evidence to support at least a large increase in mortality from COVID-19 among older adults aged 60 to 69 years versus <60 years; people having two or more versus no comorbidities; and for people affected by Down syndrome; type 1 and 2 diabetes; end-stage kidney disease; epilepsy; and motor neuron disease, multiple sclerosis, myasthenia gravis, or Huntington's disease (as a grouping). Future research should focus on risk factors where evidence remains limited (no studies) or of low quality, the pediatric population, combinations of comorbidities that may increase risk, and long-term outcomes.

## **ACKNOWLEDGMENTS**

We thank Kelsey Young, Kelly Farrah, Shainoor Ismail, and Matthew Tunis from the NACI Secretariat for expert input into the review's scope and eligibility criteria, and for reviewing the initial draft of the manuscript; Sharon Bartholomew, Louise McRae, Anne-Marie Robert, Samina Aziz, Alain Demers, Catherine Pelletier, Cynthia Robitaille, Larry Shaver, Helene Gardiner, and Dianne Zakaria from the Public Health Agency of Canada for input into the necessary adjustment variables for analyses of chronic diseases; Elizabeth Dennett and Erica Wright for developing and running literature searches; Andrew Beck for assistance with screening; and Mackinna Hauff for article retrieval and document formatting.

## **CONTRIBUTOR'S STATEMENT**

MG contributed to the conception and design of the work, selection of studies, data extraction, analysis and interpretation of data, and drafted the initial version of the manuscript. JP contributed to the conception and design of the work, analysis and interpretation of data, and revised versions of the manuscript. AW, SG, SR, BZ, and AG contributed to the selection of studies, data extraction, organizing data for analysis, and revised versions of the manuscript. LH contributed to the conception and design of the work, methodological oversight, interpretation of findings, and revised versions of the manuscript.

All authors approved of the final version of the manuscript submitted and agree to be accountable for all aspects of the work.

## **ROLE OF FUNDERS**

The funders had no role in the conduct of the study nor decision to submit for publication.

## **DATA AVAILABILITY**

The data pertaining to the conclusions are available on reasonable request using the following link:

<https://doi.org/10.7939/DVN/VDELOG>.

## **REFERENCES**

1. World Health Organization. Coronavirus Disease 2019 (COVID-19): Situation Report - 51. Geneva, Switzerland: World Health Organization; 2020. Available from: <https://www.who.int/docs/default-source/coronaviruse/situation-reports/20200311-sitrep-51-covid-19.pdf>
2. World Health Organization. What we know about long-term effects of COVID-19: the latest on the COVID-19 global situation & long-term sequelae; update 36. Geneva, Switzerland: World Health Organization; 2020. Available from: [https://www.who.int/docs/default-source/coronaviruse/risk-comms-updates/update-36-long-term-symptoms.pdf?sfvrsn=5d3789a6\\_2](https://www.who.int/docs/default-source/coronaviruse/risk-comms-updates/update-36-long-term-symptoms.pdf?sfvrsn=5d3789a6_2).
3. Government of Canada. Drug and vaccine authorizations for COVID-19: List of applications received. Ottawa, Canada: Government of Canada; 2021. Available from: <https://www.canada.ca/en/health-canada/services/drugs-health-products/covid19-industry/drugs-vaccines-treatments/authorization/applications.html>.
4. Health Canada. What you need to know about the COVID-19 vaccine for Canada 2020. Ottawa, Canada: Health Canada; 2020. Available from: <https://www.canada.ca/en/public-health/services/diseases/2019-novel-coronavirus-infection/awareness-resources/know-vaccine.html>.
5. National Advisory Committee on Immunization. Preliminary guidance on key populations for early COVID-19 immunization 2020. Ottawa, Canada; National Advisory Committee on Immunization; 2020. Available from: <https://www.canada.ca/en/public-health/services/immunization/national-advisory-committee-on-immunization-naci/guidance-key-populations-early-covid-19-immunization.html>.

6. Ismail SJ, Zhao L, Tunis MC, Deeks SL, Quach C. Key populations for early COVID-19 immunization: preliminary guidance for policy. *CAMJ*. 2020;192(48):E1620.
7. Ismail SJ, Hardy K, Tunis MC, Young K, Sicard N, Quach C. A framework for the systematic consideration of ethics, equity, feasibility, and acceptability in vaccine program recommendations. *Vaccine*. 2020;38(36):5861-76.
8. Ismail S, Tunis M, Zhao L, Quach C. Navigating inequities: a roadmap out of the pandemic. *BMJ* 2021;6:e004087.
9. Evans T, Brown H. Road traffic crashes: operationalizing equity in the context of health sector reform. *Inj Control Saf Promot*. 2003;10(1-2):11-2.
10. Wingert A, Pillay J, Gates M, Guitard S, Rahman S, Beck A, et al. Risk factors for severity of COVID-19: a rapid review to inform vaccine prioritization in Canada. *BMJ Open* (in press).
11. National Advisory Committee on Immunization. Guidance on the prioritization of key populations for COVID-19 immunization (February 12, 2021). Ottawa, Canada; National Advisory Committee on Immunization; 2021. Available from: <https://www.canada.ca/en/public-health/services/immunization/national-advisory-committee-on-immunization-naci/guidance-prioritization-key-populations-covid-19-vaccination.html>.
12. National Advisory Committee on Immunization. Recommendations on the use of COVID-19 vaccines (May 3, 2021). Ottawa, Canada; National Advisory Committee on Immunization; 2021. Available from: <https://www.canada.ca/content/dam/phac-aspc/documents/services/immunization/national-advisory-committee-on-immunization-naci/recommendations-use-covid-19-vaccines/recommendations-use-covid-19-vaccines-en.pdf>.
13. Higgins J, Thomas J, Chandler J, Cumpston M, Li T, Page M, et al. *Cochrane Handbook for Systematic Reviews of Interventions*, 2nd Edition. Chichester, UK: John Wiley & Sons; 2019.
14. Page MJ, McKenzie JE, Bossuyt PM, Boutron I, Hoffmann TC, Mulrow CD, et al. The PRISMA 2020 statement: an updated guideline for reporting systematic reviews. *BMJ*. 2021;372:n71.
15. Centres for Disease Control and Prevention. People at increased risk and other people who need to take extra precautions 2020; 2020. Available from: <https://www.cdc.gov/coronavirus/2019-ncov/need-extra-precautions/index.html>.
16. Government of the United Kingdom Department of Health and Social Care. Joint Committee on Vaccination and Immunisation: advice on priority groups for COVID-19 vaccination 2021; 2021. Available from: <https://www.gov.uk/government/publications/priority-groups-for-coronavirus->

- covid-19-vaccination-advice-from-the-jcvi-30-december-2020/joint-committee-on-vaccination-and-immunisation-advice-on-priority-groups-for-covid-19-vaccination-30-december-2020.
17. Australian Government Department of Health. Advice for people at risk of coronavirus (COVID-19) 2021; 2021. Available from: <https://www.health.gov.au/news/health-alerts/novel-coronavirus-2019-ncov-health-alert/advice-for-people-at-risk-of-coronavirus-covid-19>.
  18. Centers for Disease Control and Prevention. Science Brief: Evidence used to update the list of underlying medical conditions that increase a person's risk of severe illness from COVID-19 2021; 2021. Available from: <https://www.cdc.gov/coronavirus/2019-ncov/hcp/clinical-care/underlying-evidence-table.html>.
  19. Murad MH, Mustafa RA, Schünemann HJ, Sultan S, Santesso N. Rating the certainty in evidence in the absence of a single estimate of effect. *Evid Based Med*. 2017;22(3):85-7.
  20. Adrish M, Chilimuri S, Mantri N, Sun H, Zahid M, Gongati S, et al. Association of smoking status with outcomes in hospitalised patients with COVID-19. *BMJ Open Res*. 2020;7(1):e000716.
  21. Alkhouli M, Nanjundappa A, Annie F, Bates MC, Bhatt DL. Sex differences in case fatality rate of COVID-19: Insights from a multinational registry. *Mayo Clin Proc*. 2020;95(8):1613-20.
  22. Altschul DJ, Unda SR, Benton J, de la Garza Ramos R, Cezayirli P, Mehler M, et al. A novel severity score to predict inpatient mortality in COVID-19 patients. *Sci Rep*. 2020;10(1):16726.
  23. Alvarez-Garcia J, Lee S, Gupta A, Cagliostro M, Joshi AA, Rivas-Lasarte M, et al. Prognostic impact of prior heart failure in patients hospitalized with COVID-19. *J Am Coll Cardiol*. 2020;76(20):2334-48.
  24. An C, Lim H, Kim D-W, Chang JH, Choi YJ, Kim SW. Machine learning prediction for mortality of patients diagnosed with COVID-19: a nationwide Korean cohort study. *Sci Rep*. 2020;10(1):18716.
  25. Anderson MR, Geleris J, Anderson DR, Zucker J, Nobel YR, Freedberg D, et al. Body mass index and risk for intubation or death in SARS-CoV-2 infection: a retrospective cohort study. *Ann Intern Med*. 2020;173(10):782-90.
  26. Attaway AA, Zein J, Hatipoglu US. SARS-CoV-2 infection in the COPD population is associated with increased healthcare utilization: An analysis of Cleveland clinic's COVID-19 registry. *EClinicalMedicine*. 2020;26:100515.
  27. Azar KMJ, Shen Z, Romanelli RJ, Lockhart SH, Smits K, Robinson S, et al. Disparities in outcomes among COVID-19 patients in a large health care system in California. *Health Aff*. 2020;39(7):1253-62.

28. Barron E, Bakhai C, Kar P, Weaver A, Bradley D, Ismail H, et al. Associations of type 1 and type 2 diabetes with COVID-19-related mortality in England: A whole-population study. *Lancet Diabetes Endocrinol.* 2020;8(10):813-22.
29. Berenguer J, Ryan P, Rodriguez-Bano J, Jarrin I, Carratala J, Pachon J, et al. Characteristics and predictors of death among 4035 consecutively hospitalized patients with COVID-19 in Spain. *Clin Microbiol Infect.* 2020;26(11):1525-36.
30. Bowe B, Cai M, Xie Y, Gibson AK, Maddukuri G, Al-Aly Z. Acute kidney injury in a national cohort of hospitalized US veterans with COVID-19. *Clin J Am Soc Nephrol.* 2020.
31. Bravi F, Flacco ME, Carradori T, Volta CA, Cosenza G, De Togni A, et al. Predictors of severe or lethal COVID-19, including angiotensin converting enzyme inhibitors and angiotensin II receptor blockers, in a sample of infected Italian citizens. *PloS One.* 2020;15(6):e0235248.
32. Carter B, Collins JT, Barlow-Pay F, Rickard F, Bruce E, Verduri A, et al. Nosocomial COVID-19 infection: Examining the risk of mortality. The COPE-Nosocomial Study (COVID in Older PEople). *J Hosp Infect.* 2020;106(2):376-84.
33. Chan L, Chaudhary K, Saha A, Chauhan K, Vaid A, Zhao S, et al. AKI in Hospitalized Patients with COVID-19. *J Am Soc Nephrol.* 2020;106(2):376-384.
34. Chhiba KD, Patel GB, Vu THT, Chen MM, Guo A, Kudlaty E, et al. Prevalence and characterization of asthma in hospitalized and nonhospitalized patients with COVID-19. *J Allergy Clin Immunol.* 2020;146(2):307-14.e4.
35. Clift AK, Coupland CAC, Keogh RH, Hemingway H, Hippisley-Cox J. COVID-19 mortality risk in Down syndrome: Results from a cohort study Of 8 million adults. *Ann Intern Med.* 2020;M20-4986.
36. Cummings MJ, Baldwin MR, Abrams D, Jacobson SD, Meyer BJ, Balough EM, et al. Epidemiology, clinical course, and outcomes of critically ill adults with COVID-19 in New York City: a prospective cohort study. *Lancet.* 2020;395(10239):1763-70.
37. Czernichow S, Beeker N, Rives-Lange C, Guerot E, Diehl JL, Katsahian S, et al. Obesity doubles mortality in patients hospitalized for SARS-CoV-2 in Paris hospitals, France: a cohort study on 5795 patients. *Obesity.* 2020;28(12):2282-9.
38. de Azambuja E, Brandao M, Wildiers H, Laenen A, Aspeslagh S, Fontaine C, et al. Impact of solid cancer on in-hospital mortality overall and among different subgroups of patients with COVID-19: a nationwide, population-based analysis. *ESMO Open.* 2020;5(5):e000947.

39. Dennis JM, Mateen BA, Sonabend R, Thomas NJ, Patel KA, Hattersley AT, et al. Type 2 diabetes and COVID-19-related mortality in the critical care setting: a national cohort study in England, March-July 2020. *Diabetes care*. 2021;44(1):50-7.
40. Denova-Gutiérrez E, Lopez-Gatell H, Alomia-Zegarra JL, López-Ridaaura R, Zaragoza-Jimenez CA, Dyer-Leal DD, et al. The association between obesity, type 2 diabetes, and hypertension with severe COVID-19 on admission among Mexicans. *Obesity*. 2020;28(10):1826-32.
41. Docherty AB, Harrison EM, Green CA, Hardwick HE, Pius R, Norman L, et al. Features of 20 133 UK patients in hospital with COVID-19 using the ISARIC WHO Clinical Characterisation Protocol: prospective observational cohort study. *BMJ*. 2020;369:m1985.
42. Ellington S, Strid P, Tong VT, Woodworth K, Galang R, Zambrano LD, et al. Characteristics of women of reproductive age with laboratory-confirmed SARS-CoV-2 infection by pregnancy status — United States, January 22–June 7, 2020. *Obstet Gynecol Surv*. 2020;75(11):664-6
43. Esmé M, Koca M, Dikmeer A, Balci C, Ata N, Dogu BB, et al. Older adults with coronavirus disease 2019; a nationwide study in Turkey. *J Gerontol*. 2021. 76(3):e68-75.
44. Fond G, Pauly V, Leone M, Llorca P-M, Orleans V, Loundou A, et al. Disparities in intensive care unit admission and mortality among patients with schizophrenia and COVID-19: a national cohort study. *Schizophr Bull*. 2020;sba158.
45. Fresan U, Guevara M, Elia F, Albeniz E, Burgui C, Castilla J, et al. Independent role of morbid obesity as a risk factor for COVID-19 hospitalization: a Spanish population-based cohort study. *Obesity*. 2021;29(1):29-37.
46. Geretti AM, Stockdale AJ, Kelly SH, Cevik M, Collins S, Waters L, et al. Outcomes of COVID-19 related hospitalization among people with HIV in the ISARIC WHO Clinical Characterization Protocol (UK): a prospective observational study. *Clin Infect Dis*. 2020;ciaa1605.
47. Giannouchos TV, Sussman RA, Mier JM, Poulas K, Farsalinos K. Characteristics and risk factors for COVID-19 diagnosis and adverse outcomes in Mexico: an analysis of 89,756 laboratory-confirmed COVID-19 cases. *Eur Respir J*. 2020;2002144.
48. Giorgi Rossi P, Marino M, Formisano D, Venturelli F, Vicentini M, Grilli R, et al. Characteristics and outcomes of a cohort of COVID-19 patients in the Province of Reggio Emilia, Italy. *PLoS One*. 2020;15(8):e0238281.
49. Gottlieb M, Sansom S, Frankenberger C, Ward E, Hota B. Clinical course and factors associated with hospitalization and critical illness among COVID-19 patients in Chicago, Illinois. *Acad Emerg Med*. 2020;27(10):963-73.

50. Götzinger F, Santiago-Garcia B, Noguera-Julian A, Lanaspa M, Lancella L, Calo Carducci FI, et al. COVID-19 in children and adolescents in Europe: a multinational, multicentre cohort study. *Lancet Child Adolesc Health*. 2020;4(9):653-61.
51. Grasselli G, Greco M, Zanella A, Albano G, Antonelli M, Bellani G, et al. Risk factors associated with mortality among patients with COVID-19 in intensive care units in Lombardy, Italy. *JAMA Intern Med*. 2020;180(10):1345-55.
52. Guerrero-Torres L, Caro-Vega Y, Crabtree-Ramirez B, Sierra-Madero JG. Clinical characteristics and mortality of healthcare workers with SARS-CoV-2 infection in Mexico City. *Clin Infect Dis*. 2020;ciaa1465.
53. Gupta S, Hayek SS, Wang W, Chan L, Mathews KS, Melamed ML, et al. Factors associated with death in critically ill patients with coronavirus disease 2019 in the US. *JAMA Intern Med*. 2020;180(11):1436-46.
54. Gupta S, Coca SG, Chan L, Melamed ML, Brenner SK, Hayek SS, et al. AKI treated with renal replacement therapy in critically ill patients with COVID-19. *J Am Soc Nephrol*. 2020;32(1):161-76.
55. Hajifathalian K, Krisko T, Mehta A, Kumar S, Schwartz R, Fortune B, et al. Gastrointestinal and hepatic manifestations of 2019 novel coronavirus disease in a large cohort of infected patients from New York: clinical implications. *Gastroentero*. 2020;159(3):1137-1140.e2.
56. Hamer M, Gale CR, Kivimaki M, Batty GD. Overweight, obesity, and risk of hospitalization for COVID-19: A community-based cohort study of adults in the United Kingdom. *Proc Natl Acad Sci USA*. 2020;117(35):21011-3.
57. Hamer M, Kivimaki M, Gale CR, David Batty G. Lifestyle risk factors, inflammatory mechanisms, and COVID-19 hospitalization: A community-based cohort study of 387,109 adults in UK. *Brain Behv Immun*. 2020;87:184-7.
58. Harrison SL, Fazio-Eynullayeva E, Lane DA, Underhill P, Lip GYH. Comorbidities associated with mortality in 31,461 adults with COVID-19 in the United States: A federated electronic medical record analysis. *PLoS Med*. 2020;17(9):e1003321.
59. Hernández-Vásquez A, Azañedo D, Vargas-Fernández R, Bendezu-Quispe G. Association of comorbidities with pneumonia and death among COVID-19 patients in Mexico: a nationwide cross-sectional study. *J Prev Med Public Health*. 2020;53(4):211-9.
60. Hirsch JS, Ng JH, Ross DW, Sharma P, Shah HH, Barnett RL, et al. Acute kidney injury in patients hospitalized with COVID-19. *Kidney Int*. 2020;98(1):209-18.



61. Huh K, Lee R, Ji W, Kang M, Hwang IC, Lee DH, et al. Impact of obesity, fasting plasma glucose level, blood pressure, and renal function on the severity of COVID-19: A matter of sexual dimorphism? *Diabetes Res Clin Pract.* 2020;170:108515.
62. Iaccarino G, Grassi G, Borghi C, Ferri C, Salvetti M, Volpe M, et al. Age and multimorbidity predict death among COVID-19 patients: results of the SARS-RAS study of the Italian Society of Hypertension. *Hypertension.* 2020;76(2):366-72.
63. Ioannou GN, Locke E, Green P, Berry K, O'Hare AM, Shah JA, et al. Risk factors for hospitalization, mechanical ventilation, or death among 10131 US veterans With SARS-CoV-2 infection. *JAMA Netw Open.* 2020;3(9):e2022310.
64. Izzy S, Tahir Z, Cote DJ, Al Jarrah A, Roberts MB, Turbett S, et al. Characteristics and outcomes of Latinx patients with COVID-19 in comparison with other ethnic and racial groups. *Open Forum Infect Dis.* 2020;7(10):ofaa401.
65. Jakob CEM, Borgmann S, Duygu F, Behrends U, Hower M, Merle U, et al. First results of the "Lean European Open Survey on SARS-CoV-2-Infected Patients (LEOSS)". *Infection.* 2021;49(1):63-73.
66. Ji W, Huh K, Kang M, Hong J, Bae GH, Lee R, et al. Effect of underlying comorbidities on the infection and severity of COVID-19 in Korea: a nationwide case-control study. *J Korean Med Sci.* 2020;35(25):e237.
67. Jiménez E, Fontán-Vela M, Valencia J, Fernandez-Jimenez I, Álvaro-Alonso EA, Izquierdo-García E, et al. Characteristics, complications and outcomes among 1549 patients hospitalised with COVID-19 in a secondary hospital in Madrid, Spain: a retrospective case series study. *BMJ Open.* 2020;10(11):e042398.
68. Kabarriti R, Brodin NP, Maron MI, Guha C, Kalnicki S, Garg MK, et al. Association of race and ethnicity with comorbidities and survival among patients with COVID-19 at an urban medical center in New York. *JAMA Netw Open.* 2020;3(9):e2019795.
69. Kim L, Garg S, O'Halloran A, Whitaker M, Pham H, Anderson EJ, et al. Risk Factors for intensive care unit admission and in-hospital mortality among hospitalized adults identified through the U.S. Coronavirus Disease 2019 (COVID-19)-Associated Hospitalization Surveillance Network (COVID-NET). *Clin Infect Dis.* 2020;ciaa1012.
70. Kim T, Roslin M, Wang JJ, Kane J, Hirsch JS, Ji Kim E, et al. Body mass index as a risk factor for clinical outcomes in patients hospitalized with COVID-19 in New York. *Obesity.* 2020;29(2):279-284.

71. King JT Jr., Yoon JS, Rentsch CT, Tate JP, Park LS, Kidwai-Khan F, et al. Development and validation of a 30-day mortality index based on pre-existing medical administrative data from 13,323 COVID-19 patients: The Veterans Health Administration COVID-19 (VACO) Index. *PloS One*. 2020;15(11):e0241825.
72. Klang E, Kassim G, Soffer S, Freeman R, Levin MA, Reich DL. Morbid obesity as an independent risk factor for covid-19 mortality in hospitalized patients younger than 50. *Obesity*. 2020;28(9):1595-9.
73. Ko JY, Danielson ML, Town M, Derado G, Greenlund KJ, Daily Kirley P, et al. Risk factors for COVID-19-associated hospitalization: COVID-19-associated hospitalization surveillance network and behavioral risk factor surveillance system. *Clin Infect Dis*. 2020;ciaa1419.
74. Kolhe NV, Fluck RJ, Selby NM, Taal MW. Acute kidney injury associated with COVID-19: A retrospective cohort study. *PLoS Med*. 2020;17(10):e1003406.
75. Kragholm K, Andersen MP, Gerds TA, Butt JH, Ostergaard L, Polcwiartek C, et al. Association between male sex and outcomes of Coronavirus Disease 2019 (Covid-19) - a Danish nationwide, register-based study. *Clin Infect Dis*. 2020;ciaa924.
76. Kummer BR, Klang E, Stein LK, Dhamoon MS, Jette N. History of stroke is independently associated with in-hospital death in patients with COVID-19. *Stroke*. 2020;51(10):3112-4.
77. Kundi H, Cetin EHO, Canpolat U, Aras S, Celik O, Ata N, et al. The role of frailty on adverse outcomes among older patients with COVID-19. *J Infect*. 2020;81(6):944-51.
78. Lassale C, Gaye B, Hamer M, Gale CR, Batty GD. Ethnic disparities in hospitalisation for COVID-19 in England: The role of socioeconomic factors, mental health, and inflammatory and pro-inflammatory factors in a community-based cohort study. *Brain Behav Immun*. 2020;88:44-9.
79. Lee S-G, Park GU, Moon YR, Sung K. Clinical characteristics and risk factors for fatality and severity in patients with coronavirus disease in korea: a nationwide population-based retrospective study using the Korean Health Insurance Review and Assessment Service (HIRA) Database. *Int J Environ Res Public Health*. 2020;17(22):8559.
80. Lee SH, Park S-Y, Seon J-Y, Jeon W-H, Nam S-I, Park J-H, et al. Intensive care unit capacity and its associated risk factors during the COVID-19 surge in the Republic of Korea: analysis using nationwide health claims data. *Risk Manag Healthc Policy*. 2020;13:2571-81.
81. Lee SW, Yang JM, Moon SY, Yoo IK, Ha EK, Kim SY, et al. Association between mental illness and COVID-19 susceptibility and clinical outcomes in South Korea: a nationwide cohort study. *Lancet Psych*. 2020;7(12):1025-31.

82. Leon-Abarca JA. Obesity and immunodeficiencies are the main pre-existing conditions associated with mild to moderate COVID-19 in children. *Pediatr Obes.* 2020;15(12):e12713.
83. Loffi M, Piccolo R, Regazzoni V, Di Tano G, Moschini L, Robba D, et al. Coronary artery disease in patients hospitalised with Coronavirus disease 2019 (COVID-19) infection. *Open Heart.* 2020;7(2).
84. Lunski MJ, Burton J, Tawagi K, Maslov D, Simenson V, Barr D, et al. Multivariate mortality analyses in COVID-19: comparing patients with cancer and patients without cancer in Louisiana. *Cancer.* 2021;127(2):266-74.
85. Mallow PJ, Belk KW, Topmiller M, Hooker EA. Outcomes of hospitalized COVID-19 patients by risk factors: results from a United States hospital claims database. *J Health Econ Outcomes Res.* 2020;7(2):165-74.
86. Mikami T, Miyashita H, Yamada T, Harrington M, Steinberg D, Dunn A, et al. Risk factors for mortality in patients with COVID-19 in New York City. *J Gen Intern Med.* 2020;36:17-26.
87. Miller J, Fadel RA, Tang A, Perrotta G, Herc E, Soman S, et al. The impact of sociodemographic factors, comorbidities and physiologic response on 30-day mortality in COVID-19 patients in Metropolitan Detroit. *Clin Infect Dis.* 2020;ciaa1420.
88. Misra-Hebert AD, Jehi L, Ji X, Nowacki AS, Gordon S, Terpeluk P, et al. Impact of the COVID-19 pandemic on healthcare workers' risk of infection and outcomes in a large, integrated health system. *J Gen Intern Med.* 2020;35(11):3293-301.
89. Molnar MZ, Bhalla A, Azhar A, Tsujita M, Talwar M, Balaraman V, et al. Outcomes of critically ill solid organ transplant patients with COVID-19 in the United States. *Am J Transplant.* 2020;20(11):3061-71.
90. Nachtigall I, Lenga P, Jozwiak K, Thurmann P, Meier-Hellmann A, Kuhlén R, et al. Clinical course and factors associated with outcomes among 1904 patients hospitalized with COVID-19 in Germany: an observational study. *Clin Microbiol Infect.* 2020;26(12):1663-9.
91. Ng JH, Hirsch JS, Wanchoo R, Sachdeva M, Sakhiya V, Hong S, et al. Outcomes of patients with end-stage kidney disease hospitalized with COVID-19. *Kidney Int.* 2020;98(6):1530-9.
92. Parra-Bracamonte GM, Lopez-Villalobos N, Parra-Bracamonte FE. Clinical characteristics and risk factors for mortality of patients with COVID-19 in a large data set from Mexico. *Ann Epidemiol.* 2020;52:93-8.e2.
93. Parra-Bracamonte GM, Parra-Bracamonte FE, Lopez-Villalobos N, Lara-Rivera AL. Chronic kidney disease is a very significant comorbidity for high risk of death in patients with COVID-19 in Mexico. *Nephrol.* 2020. 26(3):248-51.

94. Patel AP, Paranjpe MD, Kathiresan NP, Rivas MA, Khera AV. Race, socioeconomic deprivation, and hospitalization for COVID-19 in English participants of a national biobank. *Int J Equity Health*. 2020;19(1):114.
95. Petermann-Rocha F, Hanlon P, Gray SR, Welsh P, Gill JMR, Foster H, et al. Comparison of two different frailty measurements and risk of hospitalisation or death from COVID-19: findings from UK Biobank. *BMC Med*. 2020;18(1):355.
96. Petrilli CM, Jones SA, Yang J, Rajagopalan H, O'Donnell L, Chernyak Y, et al. Factors associated with hospital admission and critical illness among 5279 people with coronavirus disease 2019 in New York City: prospective cohort study. *BMJ*. 2020;369:m1966.
97. Pinto C, Berselli A, Mangone L, Damato A, Iachetta F, Foracchia M, et al. SARS-CoV-2 positive hospitalized cancer patients during the Italian outbreak: the cohort study in Reggio Emilia. *Biology*. 2020;9(8):181.
98. Poletti P, Tirani M, Cereda D, Trentini F, Guzzetta G, Marziano V, et al. Age-specific SARS-CoV-2 infection fatality ratio and associated risk factors, Italy, February to April 2020. *Euro Surveill*. 2020;25(31):2001383.
99. Polverino F, Stern DA, Ruocco G, Balestro E, Bassetti M, Candelli M, et al. Comorbidities, cardiovascular therapies, and COVID-19 mortality: a nationwide, Italian observational study (ItaliCO). *Front Cardiovasc Med*. 2020;7:585866.
100. Portolés J, Marques M, López-Sánchez P, de Valdenebro M, Muñoz E, Serrano ML, et al. Chronic kidney disease and acute kidney injury in the COVID-19 Spanish outbreak. *Nephrol Dial Transplant*. 2020;35(8):1353-61.
101. Poulson M, Geary A, Annesi C, Allee L, Kenzik K, Sanchez S, et al. National disparities in COVID-19 outcomes between Black and White Americans. *J Natl Med Assoc*. 2020; in press.
102. Prado-Galbarro FJ, Sanchez-Piedra C, Gamino-Arroyo AE, Cruz-Cruz C. Determinants of survival after severe acute respiratory syndrome coronavirus 2 infection in Mexican outpatients and hospitalised patients. *Pub Health*. 2020;189:66-72.
103. Price-Haywood EG, Burton J, Fort D, Seoane L. Hospitalization and mortality among black patients and white patients with Covid-19. *N Engl J Med*. 2020;382:2534-43.
104. Rapp J, Lieberman-Cribbin W, Tuminello S, Taioli E. Male sex, severe obesity, older age, and chronic kidney disease are associated with COVID-19 severity and mortality in New York City. *Chest*. 2020;159(1):112-5.

105. Reilev M, Kristensen KB, Pottegard A, Lund LC, Hallas J, Ernst MT, et al. Characteristics and predictors of hospitalization and death in the first 11 122 cases with a positive RT-PCR test for SARS-CoV-2 in Denmark: a nationwide cohort. *Int J Epidemiol.* 2020;49(5):1468-81.
106. Rentsch CT, Kidwai-Khan F, Tate JP, Park LS, King JT, Jr., Skanderson M, et al. Patterns of COVID-19 testing and mortality by race and ethnicity among United States veterans: A nationwide cohort study. *PLoS Med.* 2020;17(9):e1003379.
107. Rey JR, Caro-Codón J, Rosillo SO, Iniesta AM, Castrejon-Castrejon S, Marco-Clement I, et al. Heart failure in COVID-19 patients: prevalence, incidence and prognostic implications. *Eur J Heart Fail.* 2020:101002/ejhf.1990.
108. Ríos-Silva M, Murillo-Zamora E, Mendoza-Cano O, Trujillo X, Huerta M. COVID-19 mortality among pregnant women in Mexico: A retrospective cohort study. *J Glob Health.* 2020;10(2):020512.
109. Rodilla E, Saura A, Jiménez I, Mendizábal A, Pineda-Cantero A, Lorenzo-Hernández E, et al. Association of Hypertension with all-cause mortality among hospitalized patients with COVID-19. *J Clin Med.* 2020;9(10):3136.
110. Sapey E, Gallier S, Mainey C, Nightingale P, McNulty D, Crothers H, et al. Ethnicity and risk of death in patients hospitalised for COVID-19 infection in the UK: an observational cohort study in an urban catchment area. *BMJ Open Res.* 2020;7(1):e000644.
111. Shah ASV, Wood R, Gribben C, Caldwell D, Bishop J, Weir A, et al. Risk of hospital admission with coronavirus disease 2019 in healthcare workers and their households: nationwide linkage cohort study. *BMJ.* 2020;371:m3582.
112. Shah V, Ko Ko T, Zuckerman M, Vidler J, Sharif S, Mehra V, et al. Poor outcome and prolonged persistence of SARS-CoV-2 RNA in COVID-19 patients with haematological malignancies; King's College Hospital experience. *Br J Haematol.* 2020;190(5):279-82.
113. Tartof SY, Qian L, Hong V, Wei R, Nadjafi RF, Fischer H, et al. Obesity and mortality among patients diagnosed with COVID-19: results from an integrated health care organization. *Ann Intern Med.* 2020;173(10):773-81.
114. Valenzuela RG, Michelen Y, Bracey A, Cruz P, Fombonne B, Fries BC, et al. Outcomes in Hispanics With COVID-19 are similar to those of Caucasian patients in suburban New York. *Acad Emerg Med.* 2020;27(12):1260-9.
115. van Gerwen M, Alsen M, Little C, Barlow J, Genden E, Naymagon L, et al. Risk factors and outcomes of COVID-19 in New York City; a retrospective cohort study. *J Med Virol.* 2020;93(2):917-15.

116. van Gerwen M, Alsen M, Little C, Barlow J, Naymagon L, Tremblay D, et al. Outcomes of patients with hypothyroidism and COVID-19: a retrospective cohort study. *Front Endocrinol*. 2020;11:565.
117. Wang Z, Zheutlin A, Kao Y-H, Ayers K, Gross S, Kovatch P, et al. Hospitalised COVID-19 patients of the Mount Sinai Health System: a retrospective observational study using the electronic medical records. *BMJ Open*. 2020;10(10):e040441.
118. Yehia BR, Winegar A, Fogel R, Fakih M, Ottenbacher A, Jesser C, et al. Association of race with mortality among patients hospitalized with Coronavirus Disease 2019 (COVID-19) at 92 US hospitals. *JAMA Netw Open*. 2020;3(8):e2018039.
119. Zafari M, Rad MTS, Mohseni F, Nikbakht N.  $\beta$ -Thalassemia Major and boronavirus-19, mortality and morbidity: a systematic review study. *Hemoglobin*. 2020:1-8.
120. Zambrano LD, Ellington S, Strid P, Galang RR, Oduyebo T, Tong VT, et al. Update: characteristics of symptomatic women of reproductive age with laboratory-confirmed SARS-CoV-2 infection by pregnancy status - United States, January 22-October 3, 2020. *MMWR Morb Mortal Wkly Rep*. 2020;69(44):1641-7.
121. Zhu Z, Hasegawa K, Ma B, Fujiogi M, Camargo CA, Liang L. Association of obesity and its genetic predisposition with the risk of severe COVID-19: analysis of population-based cohort data. *Metabolism*. 2020;112:154345.
122. Fisman DN, Bogoch I, Lapointe-Shaw L, McCready J, Tuite AR. Risk factors associated with mortality among residents with Coronavirus Disease 2019 (COVID-19) in long-term care facilities in Ontario, Canada. *JAMA Netw Open*. 2020;3(7):e2015957.
123. Fisman DN, Greer AL, Hillmer M, Tuite R. Derivation and validation of clinical prediction rules for COVID-19 mortality in Ontario, Canada. *Open Forum Infect Dis*. 2020;7(11):ofaa463.
124. Indigenous Services Canada. Confirmed cases of COVID-19. Ottawa ON: Indigenous Services Canada; 2021. Available from: <https://www.sac-isc.gc.ca/eng/1598625105013/1598625167707>.
125. Liu M, Maxwell CJ, Armstrong P, Schwandt M, Moser A, McGregor MJ, et al. COVID-19 in long-term care homes in Ontario and British Columbia. *CMAJ*. 2020;192(47):E1540-E6.
126. O'Brien J, Du KY, Peng C. Incidence, clinical features, and outcomes of COVID-19 in Canada: impact of sex and age. *J Ovarian Res*. 2020;13(1):137.
127. O'Brien K, St-Jean M, Wood P, Willbond S, Phillips O, Currie D, et al. COVID-19 death comorbidities in Canada. Ottawa, Canada: Statistics Canada; 2020. Available from: <https://www150.statcan.gc.ca/n1/en/pub/45-28-0001/2020001/article/00087-eng.pdf?st=Tj531x2z>

128. Public Health Agency of Canada COVID-19 Surveillance and Epidemiology Team. Descriptive epidemiology of deceased cases of COVID-19 reported during the initial wave of the epidemic in Canada, January 15 to July 9, 2020. *Canada Communicable Disease Report (CCDR)*. 2020;46(10):344-8.
129. Subedi R, Greenberg G, Turcotte M. COVID-19 mortality rates in Canada's ethno-cultural neighbourhoods. Ottawa, Canada: Statistics Canada; 2020. Available from: <https://www150.statcan.gc.ca/n1/pub/45-28-0001/2020001/article/00079-eng.htm>
130. Wang L, Ma H, Yiu KCY, Calzavara A, Landsman D, Luong L, et al. Heterogeneity in testing, diagnosis and outcome in SARS-CoV-2 infection across outbreak settings in the Greater Toronto Area, Canada: an observational study. *CMAJ Open*. 2020;8(4):E627-E36.
131. Ahlström B, Frithiof R, Hultstrom M, Larsson I-M, Strandberg G, Lipcsey M. The Swedish covid-19 intensive care cohort: Risk factors of ICU admission and ICU mortality. *Acta Anesthesiol Scand*. 2021. 65(4):525-33.
132. Anantharaman A, Dusendang JR, Schmittiel JA, Harzstark AL. SARS-CoV-2 Clinical outcomes in patients with cancer in a large integrated health care system in Northern California. *Oncologist*. 2021;26(3):e500-e4.
133. Bailey LC, Razzaghi H, Burrows EK, Bunnell HT, Camacho PEF, Christakis DA, et al. Assessment of 135794 pediatric patients tested for severe acute respiratory syndrome coronavirus 2 across the United States. *JAMA Pediatrics*. 2021;175(2):176-84.
134. Bennett KE, Mullooly M, O'Loughlin M, Fitzgerald M, O'Donnell J, O'Connor L, et al. Underlying conditions and risk of hospitalisation, ICU admission and mortality among those with COVID-19 in Ireland: A national surveillance study. *Lancet Regional Health*. 2021;5(100097).
135. Cordtz R, Lindhardsen J, Soussi BG, Vela J, Uhrenholt L, Westermann R, et al. Incidence and severeness of COVID-19 hospitalisation in patients with inflammatory rheumatic disease: a nationwide cohort study from Denmark. *Rheumatol*. 2020; keaa897.
136. D'Silva KM, Jorge A, Cohen A, McCormick N, Zhang Y, Wallace ZS, et al. COVID-19 Outcomes in Patients with systemic autoimmune rheumatic diseases (SARDs) compared to the general population: A US multi-center comparative cohort study. *Arthritis Rheumatol*. 2020. doi: 10.1002/art.41619
137. Floyd GC, Dudley JW, Xiao R, Feudtner C, Taquechel K, Miller K, et al. Prevalence of asthma in hospitalized and non-hospitalized children with COVID-19. *J Allergy Clin Immunol Pract*. 2021. 9(5):2077-9.e2.



138. Garazzino S, Lo Vecchio A, Pierantoni L, Calo Carducci FI, Marchetti F, Meini A, et al. Epidemiology, Clinical Features and Prognostic Factors of Pediatric SARS-CoV-2 Infection: Results From an Italian Multicenter Study. *Front Pediatr*. 2021;9:649358.139.
139. Izurieta HS, Graham DJ, Jiao Y, Hu M, Lu Y, Wu Y, et al. Natural History of Coronavirus Disease 2019: Risk Factors for Hospitalizations and Deaths Among >26 Million US Medicare Beneficiaries. *J Infect Dis*. 2021;223(6):945-56.
140. Kaeuffer C, Le Hyaric C, Fabacher T, Mootien J, Dervieux B, Ruch Y, et al. Clinical characteristics and risk factors associated with severe COVID-19: prospective analysis of 1,045 hospitalised cases in North-Eastern France, March 2020. *Euro Surveill*. 2020;25(48):2000895.
141. Kjeldsen J, Nielsen J, Ellingsen T, Knudsen T, Nielsen RG, Larsen MD, et al. Outcome of COVID-19 in hospitalized patients with chronic inflammatory diseases. A population based national register study in Denmark. *J Autoimmun*. 2021;120:102632.
142. Ludvigsson JF, Axelrad J, Halfvarson J, Khalili H, Larsson E, Lochhead P, et al. Inflammatory bowel disease and risk of severe COVID-19: A nationwide population-based cohort study in Sweden. *United European Gastroenterol J*. 2021. 9(2):177-92.
143. Mancilla-Galindo J, Vera-Zertuche JM, Navarro-Cruz AR, Segura-Badilla O, Reyes-Velazquez G, Tepepa-Lopez FJ, et al. Development and validation of the patient history COVID-19 (PH-Covid19) scoring system: a multivariable prediction model of death in Mexican patients with COVID-19. *Epidemiol Infect*. 2020;148:e286.
144. Martinez-Portilla RJ, Smith ER, He S, Torres-Torres J, Espino-Y-Sosa S, Solis-Paredes JM, et al. Young pregnant women are also at an increased risk of mortality and severe illness due to coronavirus disease 2019: analysis of the Mexican National Surveillance Program. *Am J Obstet Gynecol*. 2021;224(4):404-7.
145. Martinez-Portilla RJ, Sotiriadis A, Chatzakis C, Torres-Torres J, Espino Y Sosa S, Sandoval-Mandujano K, et al. Pregnant women with SARS-CoV-2 infection are at higher risk of death and pneumonia: propensity score matched analysis of a nationwide prospective cohort (COV19Mx). *Ultrasound Obstet Gynecol*. 2021;57(2):224-31.
146. Moreira A, Chorath K, Rajasekaran K, Burmeister F, Ahmed M, Moreira A. Demographic predictors of hospitalization and mortality in US children with COVID-19. *Eur J Pediatr*. 2021;180(5):1659-63.
147. Murillo-Zamora E, Hernandez-Suarez CM. Survival in adult inpatients with COVID-19. *Public health*. 2021;190:1-3.



148. Nair V, Jandovitz N, Hirsch JS, Abate M, Satapathy SK, Roth N, et al. An early experience on the effect of solid organ transplant status on hospitalized COVID-19 patients. *Am J Transplant*. 2020. doi: 10.1111/ajt.16460.
149. Nijman G, Wientjes M, Ramjith J, Janssen N, Hoogerwerf J, Abbink E, et al. Risk factors for in-hospital mortality in laboratory-confirmed COVID-19 patients in the Netherlands: A competing risk survival analysis. *PLoS One*. 2021;16(3):e0249231.
150. Preston LE, Chevinsky JR, Kompaniyets L, Lavery AM, Kimball A, Boehmer TK, et al. Characteristics and disease severity of US children and adolescents diagnosed with COVID-19. *JAMA Netw Open*. 2021;4(4):e215298.
151. Samuels S, Niu J, Sareli C, Eckardt P. The epidemiology and predictors of outcomes among confirmed COVID-19 cases in a large community healthcare system in South Florida. *J Community Health*. 2021. doi: 10.1007/s10900-020-00957-y
152. Ungaro RC, Agrawal M, Park S, Hirten R, Colombel J-F, Twyman K, et al. Autoimmune and chronic inflammatory disease patients with COVID-19. *ACR Open Rheumatol*. 2021;3(2):111-5.
153. Money D. Canadian surveillance of covid-19 in pregnancy: Epidemiology, maternal and infant outcomes. Vancouver, Canada: University of British Columbia; 2021.
154. Panetta L, Proulx C, Drouin O, Autmizguine J, Luu TM, Quach C, et al. Clinical Characteristics and Disease Severity Among Infants With SARS-CoV-2 Infection in Montreal, Quebec, Canada. *JAMA Netw Open*. 2020;3(12):e2030470.
155. McAlister FA, Bushnik T, Leung AA, Saxinger L. Informing COVID-19 vaccination priorities based on the prevalence of risk factors among adults in Canada. *CMAJ*. 2021:cmaj.210529.
156. Jordan RE, Adab P, Cheng KK. COVID-19: risk factors for severe disease and death. *BMJ*. 2020;368:m1198.
157. Arlet J-B, de Luna G, Khimoud D, Odièvre M-H, de Montalembert M, Joseph L, et al. Prognosis of patients with sickle cell disease and COVID-19: a French experience. *Lancet Haematol*. 2020;7(9):e632-e4.
158. de Sanctis V, Canatan D, Corrons JLV, Karimi M, Daar S, Kattamis C, et al. Preliminary data on COVID-19 in patients with hemoglobinopathies: A multicentre ICET-A study. *Mediterr J Hematol Infect Dis*. 2020;12(1):e2020046-e.
159. Lenti MV, Aronico N, Pellegrino I, Boveri E, Giuffrida P, Borrelli de Andreis F, et al. Depletion of circulating IgM memory B cells predicts unfavourable outcome in COVID-19. *Sci Rep*. 2020;10(1):20836.

160. McClenaghan E, Cosgriff R, Brownlee K, Ahern S, Burgel P-R, Byrnes CA, et al. The global impact of SARS-CoV-2 in 181 people with cystic fibrosis. *J Cyst Fibros*. 2020;19(6):868-71.
161. Ludvigsson JF. Systematic review of COVID-19 in children shows milder cases and a better prognosis than adults. *Acta Paediatr*. 2020;109(6):1088-95.
162. Wynants L, Van Calster B, Collins GS, Riley RD, Heinze G, Schuit E, et al. Prediction models for diagnosis and prognosis of covid-19: systematic review and critical appraisal. *BMJ*. 2020;369:m1328.

**Table 1.** Eligibility criteria for inclusion of studies in the review <sup>a</sup>

|                     | <b>Inclusion and exclusion criteria</b>   |
|---------------------|---|
| <b>Study design</b> | <p><b>Include:</b></p> <ul style="list-style-type: none"> <li>– Prospective and retrospective cohort studies, including registry-based studies (may be published as a letter); government reports; pre-prints that have been accepted for publication</li> <li>– Canadian reports of any design</li> <li>– Systematic reviews, only for risk factors of high relevance to NACI where no primary studies are found</li> </ul> <p><b>Exclude:</b> Pre-prints that have not been accepted by a peer-reviewed journal, commentaries, editorials</p>   |
| <b>Sample size</b>  | <p>Primary studies were required to include at least 1,000 participants (≥300 for studies of children). There was no sample size requirement for systematic reviews.</p>  |
| <b>Population</b>   | <p><b>Include:</b> People of any age in the general population; with COVID-19 infection (laboratory-confirmed or epidemiologically linked); hospitalized with COVID-19; with severe COVID-19 (as defined by study authors); children in any of the aforementioned populations.</p> <p><b>Exclude:</b> Populations with other pandemic-related infections, if data for COVID-19 cannot be isolated. People with COVID-19 that is not laboratory-confirmed or epidemiologically linked. When unclear, we included studies if it appeared that the large majority (ie., ≥90%) would be confirmed cases.</p>  |
| <b>Exposure</b>     | <p><b>Include:</b> Any P<sup>2</sup>ROGRESS And Other Factors including but not limited to age; gender identity or sex; disease/condition or disability; number of comorbidities; social factors (place/state of residence; race, ethnicity, immigrant/refugee status, Indigenous identity, culture, language; occupation; religion, belief system; education, literacy; socioeconomic status; social capital); other (e.g., health behaviours).</p> <p><b>Exclude:</b> Exposures that constitute laboratory findings, vital signs, or symptoms occurring after COVID-19 infection; any other exposures not of interest to NACI.</p>  |
| <b>Comparator</b>   | <p><b>Include:</b> (a) no exposure to the P<sup>2</sup>ROGRESS And Other Factors; (b) the same P<sup>2</sup>ROGRESS And Other Factors experienced differently or to a different extent (e.g., different age group). When included, systematic reviews did not require a comparator.</p> <p><b>Exclude:</b> Variations in disease severity within the pre-existing disease/condition or disability category (i.e., only interested in presence/absence of this risk factor); studies without a comparator.</p>   |
| <b>Outcome</b>      | <p><b>Include:</b> Epidemiologic or analytic data from Canadian reports; from all other studies, magnitude of association (based on multivariate analysis adjusting for at minimum age and sex)<sup>*</sup> between the exposure and any of hospitalization; in-hospital length of stay; ICU admission; ICU length of stay; mechanical ventilation; mortality (all-cause or case fatality); severe disease (composite outcomes as defined by study authors); need for rehabilitation; stroke; kidney, liver, or cardiac injury; generic functionality and/or disability (composite scores of validated scales); generic quality of life (composite scores of validated scales).</p> <p><sup>*</sup>Only age and sex adjustment required for studies of children. Age and sex needed to be adjusted for at least one pre-existing condition. Pre-existing conditions (except immunocompromised, autoimmune, neurologic, mental health, frailty) needed to be adjusted for body mass index. <sup>b</sup></p> <p><b>Exclude:</b> All other outcomes; disease-specific functionality, disability, or quality of life; crude / unadjusted associations; studies where the focus is symptoms, biomarkers, clinical variables collected after disease onset.</p> |
| <b>Timing</b>       | Any length of follow-up; at least 28 days for mortality   |
| <b>Setting</b>      | <ul style="list-style-type: none"> <li>– For social risk factors among adults, only Canadian studies</li> <li>– For all other risk factors, Organization for Economic Cooperation and Development countries: <a href="https://www.oecd.org/about/document/list-oecd-member-countries.htm">https://www.oecd.org/about/document/list-oecd-member-countries.htm</a></li> <li>– Systematic reviews could include studies from any country</li> </ul>  |
| <b>Language</b>     | English or French   |

<sup>a</sup> The main scope differences versus the original review were: addition of a sample size requirement; inclusion of Canadian reports of any design; addition of children as an important population; inclusion of Canadian reports only for social factors; requirement of adjustment for more than age and sex for some risk factors; addition of organ injury and long-term outcomes of relevance to NACI.

<sup>b</sup> Decisions for adjustment by body mass index were informed by the findings of our previous review and expert input from the Public Health Agency of Canada.

**Table 2.** Summary of study characteristics for the studies contributing to the main synthesis, n=124 <sup>a</sup>

| Characteristics   | Number of studies        | Proportion of studies (%) |
|---|--------------------------|---------------------------|
| <b>STUDIES</b>  |                          |                           |
| <b>Design</b>   |                          |                           |
| Retrospective cohort                                    | 93                       | 75.0                      |
| Prospective cohort                                      | 29                       | 23.4                      |
| Nested case-control                                     | 1                        | 0.8                       |
| Systematic review <sup>b</sup>                          | 1                        | 0.8                       |
| <b>Setting</b>  |                          |                           |
| United States   | 55                       | 44.4                      |
| United Kingdom  | 15                       | 12.1                      |
| Mexico  | 13                       | 10.5                      |
| Italy   | 9                        | 7.3                       |
| Korea   | 6                        | 4.8                       |
| Spain   | 6                        | 4.8                       |
| Denmark   | 4                        | 3.2                       |
| France  | 3                        | 2.4                       |
| Other <sup>c</sup>                                      | 16                       | 12.9                      |
| <b>Funding source</b>                                   |                          |                           |
| Non-industry  | 59                       | 47.5                      |
| Industry  | 3                        | 2.4                       |
| No funding  | 28                       | 22.6                      |
| Not reported  | 36                       | 29.0                      |
| <b>PARTICIPANTS <sup>d</sup></b>                        |                          |                           |
| Number of participants, median (range)                  | 5,327 (34 to 61,414,470) |                           |
| Mean or median age in years, median (range)             | 61.6 (5.0 to 78.6)       |                           |
| Sex/gender, median % male (range)                       | 49.9 (0 to 94.0)         |                           |
| <b>Population analyzed</b>                              |                          |                           |
| General population                                      | 10                       | 8.1                       |
| People with COVID-19                                    | 60                       | 48.4                      |
| Hospitalized with COVID-19                              | 63                       | 50.8                      |
| With severe disease (in ICU or mechanically ventilated) | 9                        | 7.3                       |
| <b>COVID-19 ascertainment</b>                           |                          |                           |
| RT-PCR  | 95                       | 76.6                      |
| Laboratory confirmed (unspecified test)                 | 25                       | 20.2                      |
| Antigen test  | 3                        | 2.4                       |
| Nucleic acid test                                       | 2                        | 1.6                       |
| Rapid antibody test                                     | 2                        | 1.6                       |
| <b>EXPOSURES</b>  |                          |                           |
| Pre-existing conditions                                 | 96                       | 77.4                      |
| Gender identity/sex                                     | 71                       | 57.3                      |
| Age (60-69 versus <60 years)                            | 42                       | 33.9                      |
| Other (health behaviours)                               | 27                       | 21.8                      |
| Number of comorbidities                                 | 22                       | 17.7                      |
| Children  | 11                       | 8.9                       |
| Exposure - occupation                                   | 4                        | 3.2                       |
| Pregnancy   | 4                        | 3.2                       |
| <b>OUTCOMES</b>   |                          |                           |
| Hospitalization   | 37                       | 29.8                      |

| <b>Characteristics</b>     | <b>Number of studies</b> | <b>Proportion of studies (%)</b> |
|----------------------------|--------------------------|----------------------------------|
| In-hospital length of stay | 4                        | 3.2                              |
| ICU admission              | 27                       | 21.8                             |
| ICU length of stay         | 1                        | 0.8                              |
| Mechanical ventilation     | 22                       | 17.7                             |
| Acute kidney injury        | 8                        | 6.5                              |
| Ischemic stroke            | 1                        | 0.8                              |
| Severe disease             | 28                       | 22.6                             |
| Mortality                  | 89                       | 71.8                             |

COVID-19=novel coronavirus disease 2019; ICU=intensive care unit; RT-PCR=reverse transcription polymerase chain reaction

<sup>a</sup> Categories do not all add to 100%, as it is possible for studies to report on more than one category (e.g., used more than one COVID-19 ascertainment method, analyzed more than one population).

<sup>b</sup> Included for  $\beta$ -thalassemia as no primary studies meeting the selection criteria were located.

<sup>c</sup> Includes Belgium (n=1), , Germany (n=2), Ireland (n=1), multi-country (n=3), Netherlands (n=1), Sweden (n=2), Turkey (n=2), UK and Italy (n=1).

<sup>d</sup> 24 studies did not report on patient mean or median age, one study in children did not report on patient sex/gender.

**Table 3.** Risk factors identified that have large or very large associations with severe outcomes of COVID-19 and the corresponding level of certainty in the association

| Risk factor (among people with COVID-19 unless otherwise specified)                                    | Outcome of interest        | Magnitude of association <sup>a</sup> (certainty in association) <sup>b</sup> |
|--|----------------------------|---|
| <b>Age</b>   |                            |   |
| 60-69 vs. <60 years  | Hospitalization            | Large (moderate)  |
|  | Mechanical ventilation     | Large (low)   |
|  | Severe disease             | Large to very large (low)   |
|  | Mortality                  | Large/very large (moderate/low)   |
| <b>Pre-existing conditions</b>   |                            |   |
| 2 or more vs. no comorbidities   | Hospitalization            | Large (moderate)  |
|  | ICU admission              | Large (low)   |
|  | Mechanical ventilation     | Large (low)   |
|  | Mortality                  | Large (moderate)  |
| Down syndrome <sup>c</sup>   | Hospitalization            | Large/very large (moderate/low)   |
|  | Mortality                  | Very large (moderate)   |
| Type 1 diabetes <sup>c</sup>   | Mortality                  | Large/very large (moderate/low)   |
| Type 2 diabetes <sup>c</sup>   | Mortality                  | Large/very large (moderate/low)   |
| End-stage kidney disease <sup>c</sup>  | Mortality                  | Large (moderate)  |
| Epilepsy <sup>c</sup>  | Mortality                  | Large (moderate)  |
| Motor neuron disease, multiple sclerosis, myasthenia gravis, or Huntington's disease <sup>c,d</sup>    | Mortality                  | Large (moderate)  |
| Chemotherapy in the past 12 months (Grade A-C) <sup>c,e</sup>  | Mortality                  | Large/very large (low)  |
| Radiotherapy in the past 6 months <sup>c</sup>   | Mortality                  | Large (low)   |
| Among people <70 years, metastatic cancer  | Mortality                  | Large (low)   |
| Parkinson's disease <sup>c</sup>   | Mortality                  | Large (low)   |
| Sickle cell disease or severe immunodeficiency <sup>c</sup>  | Mortality                  | Large (low)   |
| Solid organ transplant   | Mortality                  | Large (low)   |
| Transplant (any, including solid organ)  | Hospitalization            | Large (low)   |
| Kidney transplant (due to stage 5 kidney disease) <sup>c</sup>   | Mortality                  | Large (low)   |
| Recent bone marrow or stem cell transplant <sup>c</sup>  | Mortality                  | Large (low)   |
| Vasculitis <sup>c</sup>  | Hospitalization            | Large (low)   |
| Major psychiatric disorder (schizophrenia, schizoaffective disorder, or bipolar disorder) <sup>f</sup> | Mortality                  | Large (low)   |
|  | Hospitalization            | Large (low)   |
| Cerebral palsy <sup>c</sup>  | Mortality                  | Large (low)   |
| Diabetes (any type) in females   | Mortality                  | Large (low)   |
| Obesity class III vs. normal weight  | Mortality                  | Large (low)   |
| Previous cerebrovascular accident  | Hospitalization            | Large (moderate)  |
| Obesity (all classes) vs. normal weight <sup>c</sup>   | Hospitalization            | Large (low)   |
| Obesity class III vs. lower body mass index  | Hospitalization            | Large (low)   |
| Obesity hypoventilation syndrome   | Mechanical ventilation     | Large (low)   |
| Pregnancy (any stage)  | Hospitalization            | Large (low)   |
|  | ICU admission              | Large (low)   |
|  | Severe disease (pneumonia) | Large (low)   |
| Frailty <sup>c,g</sup>   | Hospitalization            | Large (low)   |
| Chronic kidney disease   | Hospitalization            | Approaching large (low)   |
| Diabetes (any)   | Hospitalization            | Approaching large (low)   |

| <b>Risk factor (among people with COVID-19 unless otherwise specified)</b> | <b>Outcome of interest</b> | <b>Magnitude of association<sup>a</sup> (certainty in association)<sup>b</sup></b> |
|--|----------------------------|--|
| <b>Children (as defined by individual studies)</b>                         |                            |  |
| Children (0-19 years) vs. adults (50-59 years)                             | Hospitalization            | Large reduction (low)  |
| Age <1 month vs. >1 month  | ICU admission              | Large (low)  |
| Immunodeficiency or immunosuppression (unspecified reason)                 | Mortality                  | Large to very large (low)  |
|  | Hospitalization            | Large (low)  |
| Hypertension   | Hospitalization            | Large (low)  |
| 2 or more vs. no chronic conditions <sup>h</sup>                           | Hospitalization            | Large (moderate)   |
| 1 vs. no chronic conditions <sup>h</sup>                                   | Hospitalization            | Large (low)  |
| 1 or more vs. no chronic conditions <sup>i</sup>                           | ICU admission              | Large (low)  |
|  | Mechanical ventilation     | Large (low)  |
|  | Severe disease             | Large (low)  |
| Asthma   | ICU admission              | Large (low)  |
| Endocrine condition <sup>j</sup>   | Severe disease             | Large (low)  |
| Metabolic condition <sup>j</sup>   | Severe disease             | Large (low)  |
| Malignancy <sup>j</sup>  | Severe disease             | Large (low)  |
| Black race/ethnicity vs. White non-Hispanic                                | Mortality                  | Large (low)  |
|  | Hospitalization            | Large (low)  |
| <b>Risk of exposure - occupation</b>                                       |                            |  |
| Healthcare workers (vs. non-healthcare workers)                            | Hospitalization            | Large reduction (low)  |
|  | ICU admission              | Large reduction (low)  |

ICU=intensive care unit; vs.=versus

<sup>a</sup> Magnitude of associations are shown as large (OR or RR  $\geq 2.00$ , or  $\leq 0.5$  for reduction) or very large (OR or RR  $\geq 4.00$ ).

<sup>b</sup> Confidence in the magnitude of the associations was determined by considering primarily consistency in findings across studies, directness of the setting and risk factors (e.g., type of healthcare system, uncertainty about risk factor clearly matching review criteria), precision (e.g., confidence intervals indicating possibility of little to no association), and potential risk of bias. Low confidence indicates that there may be an association and moderate means that the evidence indicates that there probably is an association of the magnitude stated.

<sup>c</sup> The denominator for these risk factors is the general population. These were included when findings for the risk factor-outcome comparison were not available from studies of populations with COVID-19.

<sup>d</sup> These conditions were grouped within a single study; evidence for the individual conditions is either unavailable or of lower certainty.

<sup>e</sup> There was evidence of a large to very large increase in mortality with grades B and C chemotherapy from one large study. However, the stages of chemotherapy were not defined, and could not be ascertained from the study's authors. In the absence of adequate information, we have grouped all stages of chemotherapy (A, B, and C) together for analysis.

<sup>f</sup> Defined by hospital discharge diagnosis, in combination with drug use (filled a prescription) for the condition in the past 6 months.

<sup>g</sup> General population sample that may include community and non-community dwelling people. Measured on scales that include items such as weight loss, exhaustion, physical activity, walking speed, grip strength, overall health, disability, presence of disease, dementia, falls, mental wellbeing.

<sup>h</sup> Includes congenital malformations, asthma, epilepsy, complex genetic syndromes, endocrine disorders, cancers, hematologic diseases, rheumatic diseases, autoimmune disease, autism or neurologic development impairment, gastrointestinal diseases, liver disease, renal disease, genitourinary diseases, cystic fibrosis or other chronic lung diseases, metabolic disorders, hydrocephalus, severe obesity, hypertension, otolaryngologic diseases, pregnancy, and 'complex chronic conditions'.

<sup>i</sup> Includes congenital malformations, asthma, epilepsy, complex genetic syndromes, endocrine disorders, cancers, hematologic diseases, rheumatic diseases, autism or neurologic development impairment, gastrointestinal diseases, genitourinary diseases, renal disease, cystic fibrosis or other chronic lung diseases, metabolic disorders, hydrocephalus, severe obesity, otolaryngologic diseases.

<sup>j</sup> Categorizations according to ICD-10-CM codes and the Pediatric Medical Complexity Algorithm.



**Table 4.** Risk factors identified in Canadian reports and potential associations with severe outcomes of COVID-19

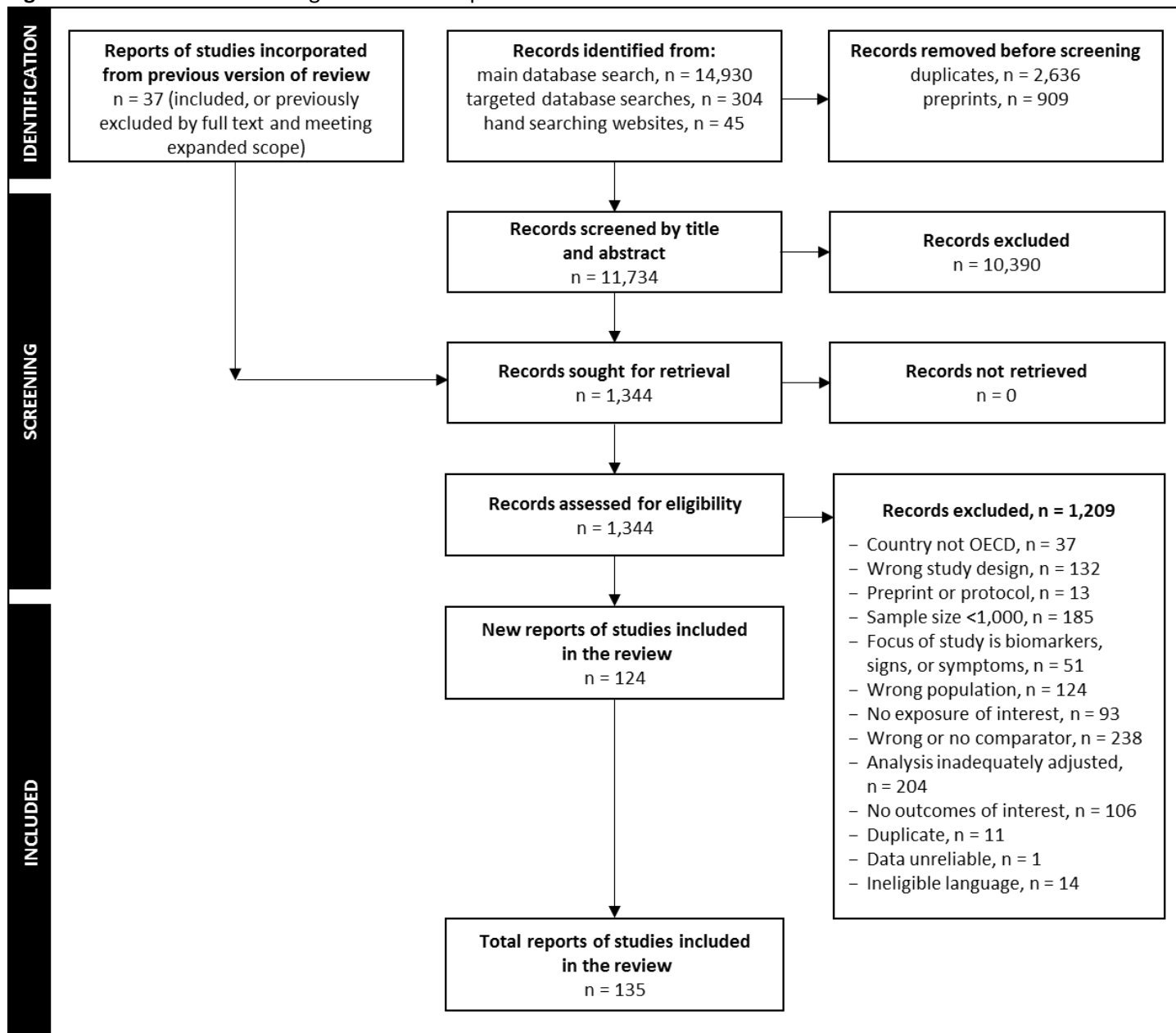
| Risk factor  | Reports (participants) | Conclusion   |
|--|------------------------|--|
| <b>Social factors</b>                                    |                        |  |
| Living in long-term care                                 | 6 (≈2 million)         | Probably associated with a large increase in mortality; the association may be very large for those in their 60s and 70s.  |
| Being part of a visible minority population <sup>a</sup> | 1 (8,796)              | May be associated with increased mortality; magnitude uncertain and findings rely on ecological data and did not account for important covariates.   |
| Living on a First Nations reserve                        | 1 (9,715)              | Rates of hospitalization and mortality appear lower compared to living off-reserve. The evidence does not account for potentially important covariates such as age.  |
| Being a healthcare worker                                | 2 (23,101)             | Among those aged 30-70 years, may be associated with a large reduction in hospitalization, ICU admission, and mortality. Among healthcare workers, males appear to have higher rates of hospitalization, ICU admission, and mortality than females. Analyses did not account for important covariates.   |
| Homelessness   | 2 (18,224)             | Very uncertain about associations with mortality.  |
| Being a homeless shelter worker                          | 1 (1,734)              | Very uncertain about associations with mortality.  |
| <b>Age and gender identity/sex</b>                       |                        |  |
| Age 60-69 vs. <60 years                                  | 5 (235,481)            | May be associated with a large increase in hospitalization, ICU admission, and mortality. For mortality there may also be a large association when compared to 50-59 years. The magnitude of association appears to account for pre-existing medical conditions and seems similar between sexes, though absolute rates are high among men in all age groups, particularly among those not residing in long-term care or delivering healthcare. Findings for hospitalization and ICU admission may be most applicable to those living outside of long-term care as there has been limited transfer to hospital and ICU from this setting. |
| Male vs. female  | 2 (11,259)             | Rates of hospitalization and ICU admission appear to be lower among females >30 years; after excluding health care workers, long-term care residents, and school/daycare workers and attendees, the reduction in hospitalization and ICU admission was only observed in those >50 years. Case fatality appears to be lower among females than males in the same age group.   |
| <b>Pre-existing conditions</b>                           |                        |  |
| One vs. no comorbidities                                 | 2 (15,875)             | In all age groups, may have little-to-no association with mortality.   |
| Two or more vs. <2 comorbidities                         | 1 (6,350)              | Among people aged 60-79 years, may be associated with a large increase in mortality. Study data were not adjusted for important covariates like residing in long-term care. Findings for people <60 years were limited by small sample size.   |
| Compromised immunity                                     | 1 (1,734)              | May be associated to some extent with an increase in mortality; the magnitude of association is uncertain due to a wide confidence interval. This association was adjusted for age, long-term care residency, smoking, renal disease, diabetes, and chronic obstructive pulmonary disease.   |
| Malignancy   | 2 (11,259)             | May be associated to some extent with an increase in mortality; the magnitude of association is uncertain due to lack of adjustment for important covariates.  |

| <b>Risk factor</b>                          | <b>Reports (participants)</b> | <b>Conclusion</b>  |
|---|-------------------------------|--|
| Pre-existing chronic conditions             | 2 (11,259)                    | Chronic obstructive pulmonary disease, diabetes, and renal disease may be associated with a large increase in mortality; these findings lacked adjustment for sex, BMI, or social factors, which may be important confounders. Other pre-existing conditions that are common among COVID-19 deaths include dementia and Alzheimer’s disease, pneumonia, hypertension, ischemic heart disease, respiratory failure, renal failure, chronic lower respiratory disease, nervous system disorders, and cancer. These findings are from epidemiologic data and not adjusted for important covariates. |
| <b>Special populations</b>                  |                               |  |
| Pregnancy                                   | 1 (137,901)                   | Among females of childbearing age with COVID-19, pregnancy may be associated with a large-to-very large increase in hospitalization and ICU admission. The findings were not adjusted for important covariates.  |
| <b>Children and young adults</b>            |                               |  |
| Pre-existing disease in young people        | 1 (9,525)                     | Among young adults, adolescents, and children, mortality from COVID-19 may be associated with having at least one comorbidity. This finding is not adjusted for important covariates.  |
| Pre-existing disease in infants <1 year old | 1 (27)                        | Among a small sample of infants with COVID-19, few (20%) who were hospitalized had a comorbid condition. The findings were not adjusted for any covariates.  |
| Age in infants <1 year old                  | 1 (27)                        | There appeared to be little-to-no difference in severe outcomes by age. The findings were not adjusted for any covariates.   |
| Sex/gender in infants <1 year old           | 1 (27)                        | Among a small sample of infants with COVID-19, half of those hospitalized were male and half were female. The findings were not adjusted for any covariates.   |

COVID-19=novel coronavirus disease 2019; BMI=body mass index; ICU=intensive care unit

<sup>a</sup> Defined as “Persons, other than Aboriginal peoples, who are non-Caucasian in race or non-white in colour.” Includes mainly South Asian, Chinese, Black, Filipino, Latin American, Arab, Southeast Asian, West Asian, Korean, Japanese.

**Figure 1.** Flow of records through the selection process



OECD=Organization for Economic Cooperation and Development