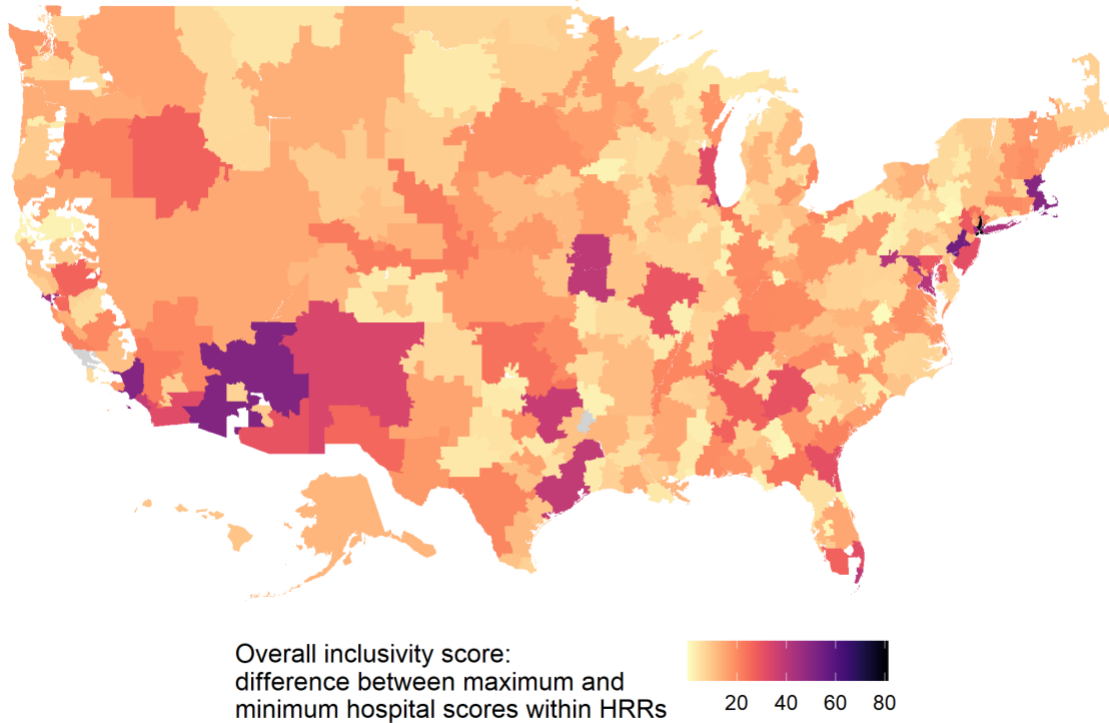


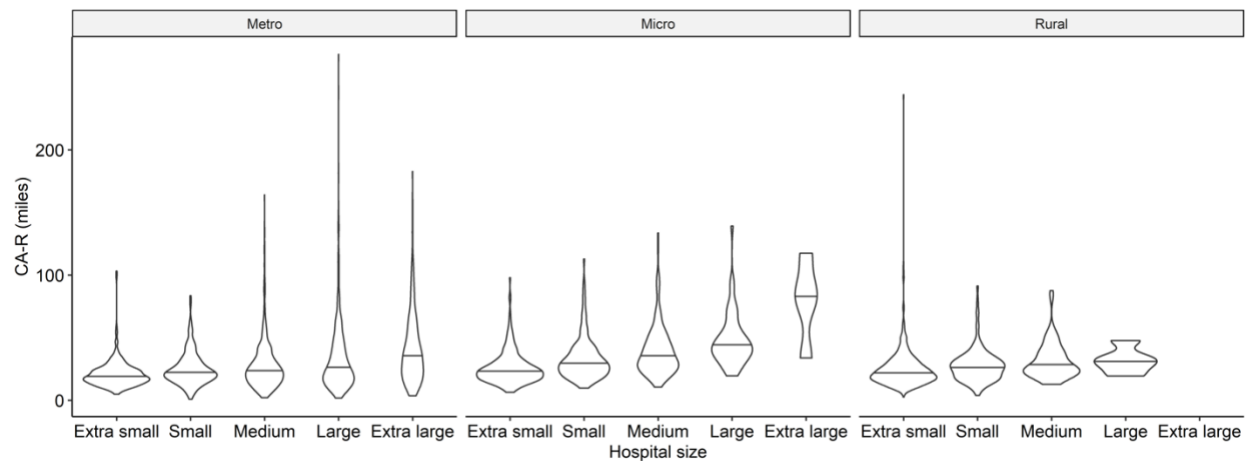
Online supplement



eFigure 1. The range of composite inclusivity scores within each HRR. (The Maximum - Minimum Inclusivity Scores x 100)

eTable 1. Summary statistics of the total hospital patients included within Community Area Radius (CA-R) by core-based statistical area (CBSA).

	Patients within CA-R (%)	
	Median (IQR)	Mean (SD)
All hospitals (N = 3,548)	90.1 (84.9, 93.2)	87.6 (8.7)
CBSA		
Metropolitan (N = 2,207)	89.4 (83.6, 93.0)	86.6 (9.7)
Micropolitan	92.0 (88.6, 94.4)	90.5 (5.8)
Rural	89.9 (85.5, 92.9)	88.4 (6.8)

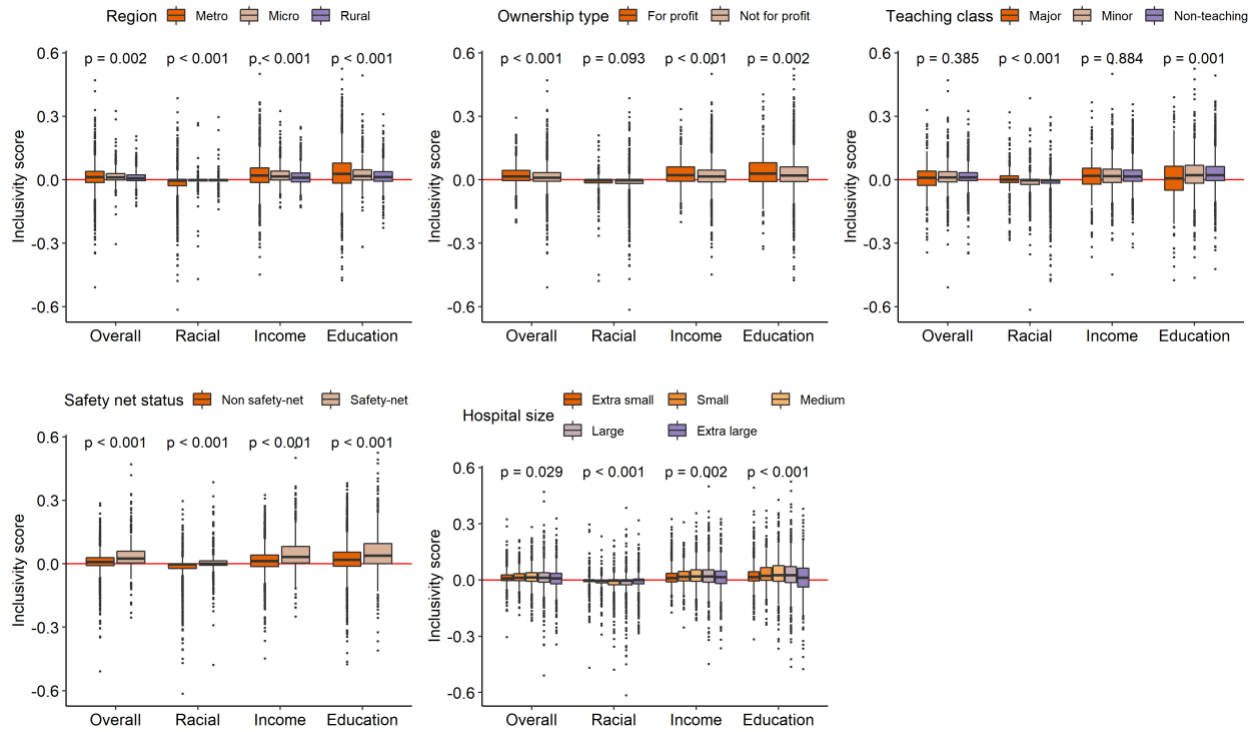


eFigure 2. Community Area Radius across core-based statistical area and hospital size. Density of results are represented by violin plots, with the median result for each group shown by the horizontal line.

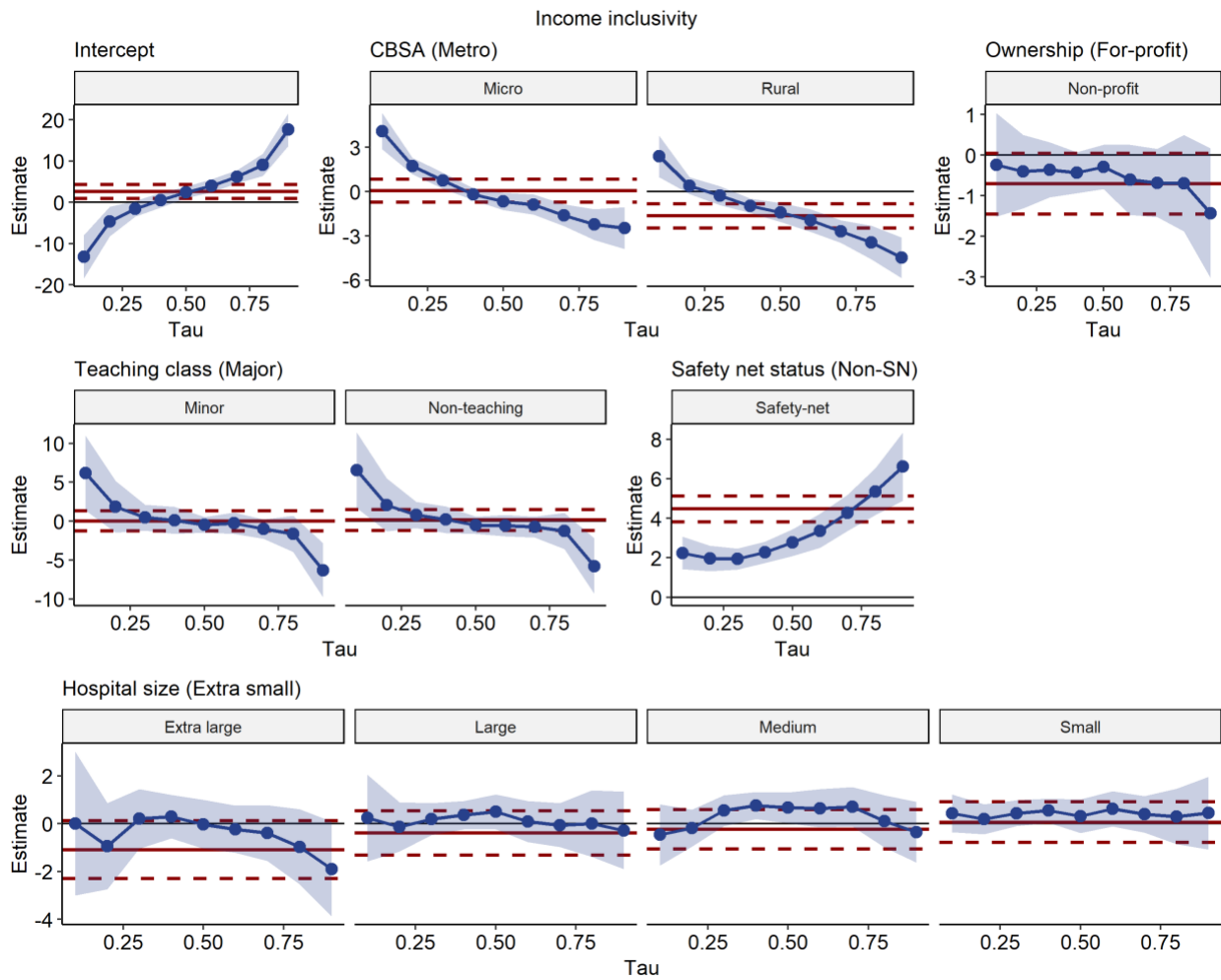
eTable 2. Community area and hospital estimates of education levels, median income, and percentage of different racial groups based on data from zip code-level American Community survey data.

Value	Community area scores			Hospital scores		
	Median (IQR)	Mean (SD)	Range	Median (IQR)	Mean (SD)	Range
Education level	3.9 (3.6, 4.1)	3.9 (0.4)	1.7, 5.4	3.8 (3.6, 4.1)	3.9 (0.4)	1.8, 5.6
Median income (\$)	43,416 (38,268, 50,107)	44,787 (9,651)	20,654, 100,507	42,144 (36,987, 48,644)	43,919 (10,529)	18,922, 109,680
American Indian persons (%)	0.3 (0.1, 0.5)	0.6 (1.7)	0.0, 62.8	0.3 (0.1, 0.6)	0.7 (2.3)	0.0, 67.9
Asian persons (%)	1.0 (0.4, 2.4)	2.9 (6.0)	0.0, 70.5	0.8 (0.3, 2.1)	2.6 (5.9)	0.0, 69.6
Black or African American persons (%)	3.8 (0.7, 11.6)	8.4 (11.2)	0.0, 80.7	2.7 (0.5, 9.9)	8.0 (12.6)	0.0, 89.3
Hispanic persons (%)	1.9 (0.9, 6.4)	6.4 (11.3)	0.0, 99.0	1.7 (0.8, 5.6)	6.1 (11.7)	0.0, 98.3

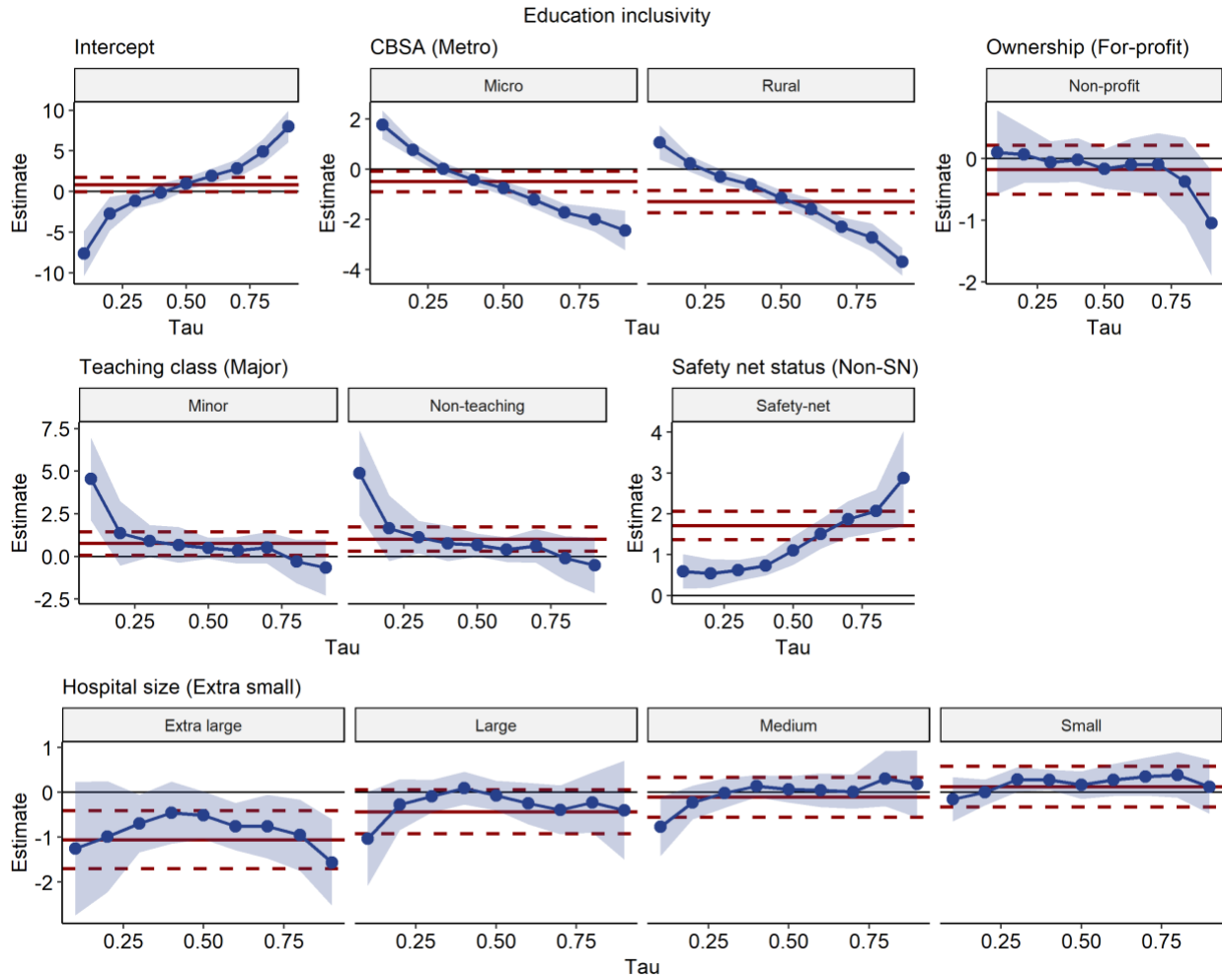
Value	Community area scores			Hospital scores		
	Median (IQR)	Mean (SD)	Range	Median (IQR)	Mean (SD)	Range
Other race reported (%)	0.4 (0.1, 1.5)	1.5 (2.8)	0.0, 30.5	0.3 (0.1, 1.2)	1.4 (3.0)	0.0, 36.6
Native Hawaiian or Pacific Islander persons (%)	0.0 (0.0, 0.0)	0.1 (0.3)	0.0, 9.4	0.0 (0.0, 0.0)	0.1 (0.4)	0.0, 10.7
Two or more races reported (%)	0.8 (0.5, 1.2)	1.0 (0.9)	0.0, 14.5	0.8 (0.5, 1.3)	1.0 (1.0)	0.0, 14.8
White, non-Hispanic persons (%)	87.1 (72.7, 95.4)	81.0 (18.6)	1.0, 100.0	89.3 (74.3, 96.1)	81.8 (19.6)	1.5, 100.0



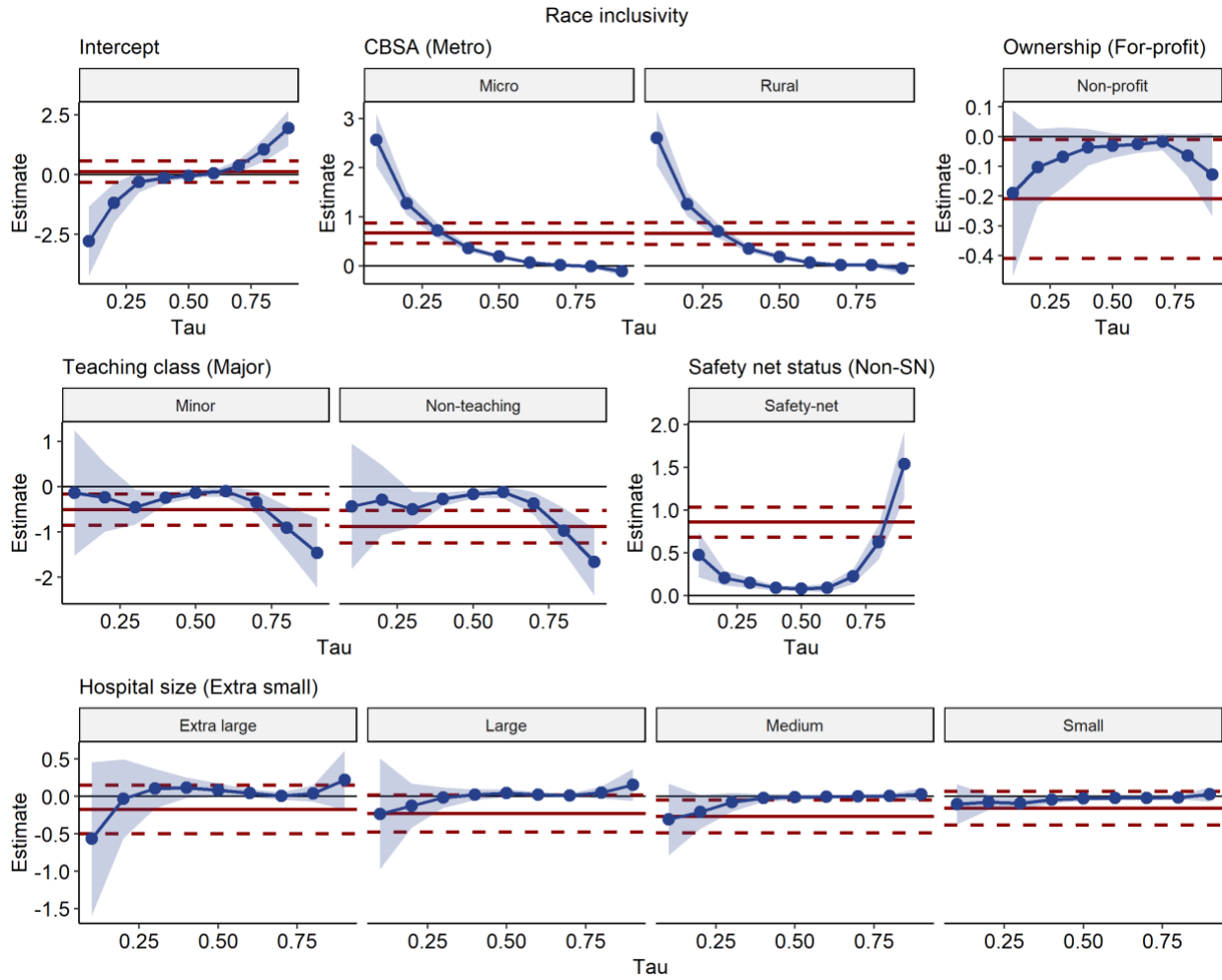
eFigure 3. Box plots of the three inclusivity scores (race, income and education) by hospital characteristics. CBSA: core-based statistical area.



eFigure 4. Quantile regression results for income inclusivity scores.



eFigure 5. Quantile regression results for education inclusivity scores.



eFigure 6. Quantile regression results for racial inclusivity scores.

eTable 3. Comparison of inclusivity scores of safety net versus non-safety net hospitals in rural areas

Characteristic	Non-safety net hospitals, N = 535	Safety net hospitals, N = 201	p-value ¹
Overall inclusivity			0.001
Median (IQR)	0.4 (-0.6, 2.1)	1.1 (-0.1, 2.8)	
Mean (SD)	0.8 (3.0)	1.6 (2.9)	
Racial inclusivity			0.4
Median (IQR)	0.0 (-0.2, 0.0)	0.0 (-0.2, 0.0)	
Mean (SD)	-0.1 (1.0)	0.0 (0.9)	
Income inclusivity			0.002
Median (IQR)	0.7 (-1.7, 3.6)	2.0 (-0.3, 5.1)	
Mean (SD)	1.3 (5.1)	2.6 (5.3)	
Education inclusivity			0.007
Median (IQR)	0.5 (-0.4, 1.7)	0.9 (-0.1, 2.3)	
Mean (SD)	0.7 (2.6)	1.3 (2.5)	

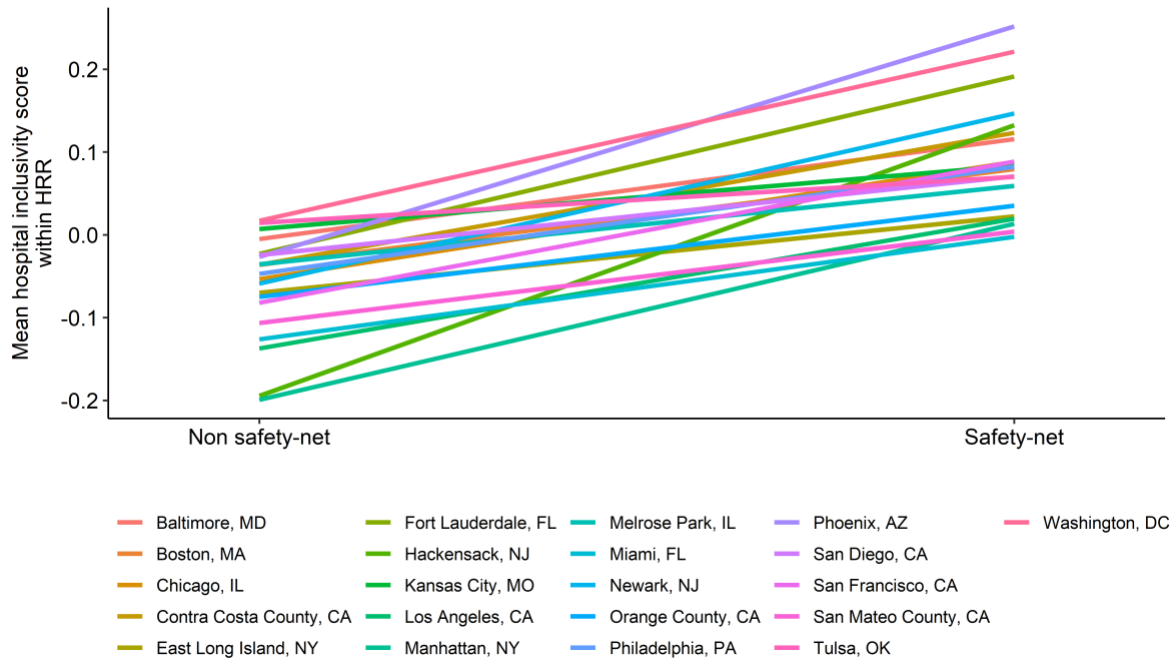
¹Welch Two Sample t-test

eTable 4. The unadjusted and adjusted 10th, 50th and 90th percentile inclusivity score estimates.

Hospital characteristic	10 th percentile		50 th percentile		90 th percentile	
	Unadjusted	Adjusted (CI)	Unadjusted	Adjusted (CI)	Unadjusted	Adjusted (CI)
Overall inclusivity score						
Hospital size						
Extra small	-1.8	-3.8 (-5.4, -2.2)	0.8	1.7 (1.2, 2.1)	5.2	9.2 (7.8, 10.6)
Small	-2.4	-3.7 (-5.3, -2.1)	1.1	1.8 (1.3, 2.2)	6.2	9.6 (8.2, 11)
Medium	-4.4	-4.1 (-5.8, -2.3)	1.3	1.8 (1.4, 2.3)	7.4	9.1 (7.8, 10.4)
Large	-6.2	-5.0 (-6.8, -3.1)	1.2	1.7 (1.2, 2.2)	7.7	8.8 (7.4, 10.3)
Extra large	-8.7	-5.3 (-8.2, -2.4)	0.8	1.4 (0.9, 1.9)	7.1	7.6 (6.1, 9)
CBSA type						
Metro	-6.1	-6.4 (-7.8, -5.0)	1.2	2.0 (1.7, 2.4)	7.7	10.2 (9.1, 11.4)
Micro	-1.3	-3.0 (-4.4, -1.6)	1.1	1.8 (1.3, 2.2)	5.5	8.8 (7.5, 10.1)
Rural	-1.8	-3.7 (-5.1, -2.2)	0.6	1.2 (0.8, 1.7)	4.2	7.6 (6.2, 8.9)
Ownership						
For-profit	-4.0	-4.4 (-5.9, -2.8)	1.5	1.8 (1.4, 2.3)	8.3	9.3 (7.9, 10.8)
Non-profit	-3.9	-4.3 (-5.6, -3.1)	0.9	1.5 (1.2, 1.9)	6.3	8.4 (7.3, 9.5)
Teaching class						
Major	-10.9	-7.5 (-11.5, -3.6)	1.0	1.7 (0.8, 2.6)	9.6	11.5 (8.7, 14.4)
Minor	-5.1	-2.8 (-3.8, -1.8)	1.0	1.7 (1.4, 2.0)	7.3	7.7 (6.7, 8.7)
Non-teaching	-3.0	-2.7 (-3.6, -1.8)	1.0	1.6 (1.4, 1.9)	6.0	7.3 (6.5, 8.1)
Safety net status						
Non-safety net	-4.4	-5.2 (-6.5, -3.8)	0.8	0.8 (0.5, 1.1)	5.5	6.5 (5.4, 7.6)
Safety net	-1.9	-3.6 (-4.9, -2.2)	2.5	2.6 (2.1, 3.1)	10.4	11.2 (9.7, 12.7)
Income inclusivity score						
Hospital size						
Extra small	-3.7	-5.7 (-7.6, -3.8)	1.2	2.6 (2.0, 3.3)	9.6	13.9 (11.9, 15.8)
Small	-3.6	-5.3 (-7.3, -3.3)	2.0	2.9 (2.2, 3.7)	10.8	14.3 (12.2, 16.4)
Medium	-6.3	-6.2 (-8.2, -4.2)	2.4	3.3 (2.6, 3.9)	12.1	13.5 (11.6, 15.4)
Large	-6.5	-5.5 (-7.6, -3.4)	2.4	3.1 (2.4, 3.8)	11.9	13.6 (11.7, 15.5)
Extra large	-9.5	-5.7 (-8.3, -3.2)	1.9	2.6 (1.8, 3.3)	11.9	12.0 (10.0, 14.0)

Hospital characteristic	10 th percentile		50 th percentile		90 th percentile	
	Unadjusted	Adjusted (CI)	Unadjusted	Adjusted (CI)	Unadjusted	Adjusted (CI)
CBSA type						
Metro	-7.2	-7.9 (-9.6, -6.1)	2.3	3.6 (3.1, 4.1)	12.6	15.8 (14.2, 17.4)
Micro	-2.3	-3.8 (-5.5, -2.0)	1.8	2.9 (2.3, 3.6)	9.4	13.3 (11.4, 15.2)
Rural	-3.8	-5.5 (-7.3, -3.6)	1.1	2.2 (1.5, 2.8)	7.6	11.3 (9.3, 13.3)
Ownership						
For-profit	-5.2	-5.6 (-7.3, -3.8)	2.6	3.1 (2.3, 3.8)	13.0	14.2 (12.2, 16.2)
Non-profit	-5.4	-5.8 (-7.5, -4.2)	1.8	2.8 (2.3, 3.2)	10.5	12.7 (11.2, 14.3)
Teaching class						
Major	-13.0	-9.9 (-14.8, -5.0)	2.2	3.2 (2.2, 4.3)	14.8	17.5 (13.7, 21.2)
Minor	-6.6	-3.8 (-5.0, -2.6)	2.0	2.8 (2.2, 3.3)	11.6	11.2 (9.8, 12.6)
Non-teaching	-4.4	-3.4 (-4.1, -2.6)	1.9	2.7 (2.3, 3.2)	10.6	11.7 (10.5, 12.9)
Safety net status						
Non-safety net	-6.0	-6.8 (-8.5, -5.1)	1.5	1.5 (1.1, 2)	9.3	10.2 (8.7, 11.6)
Safety net	-2.9	-4.6 (-6.3, -2.8)	3.9	4.3 (3.6, 5)	16.6	16.8 (14.6, 18.9)
Education inclusivity score						
Hospital size						
Extra small	-1.4	-3.2 (-4.2, -2.1)	0.8	1.2 (0.8, 1.6)	5.0	6.5 (5.6, 7.4)
Small	-1.7	-3.3 (-4.4, -2.3)	1.2	1.4 (1, 1.7)	5.9	6.6 (5.7, 7.5)
Medium	-2.7	-3.9 (-5.0, -2.9)	1.3	1.3 (0.9, 1.6)	6.9	6.7 (5.7, 7.7)
Large	-3.9	-4.2 (-5.4, -3.0)	1.3	1.1 (0.7, 1.5)	6.9	6.1 (4.9, 7.3)
Extra large	-5.4	-4.4 (-5.7, -3.1)	0.6	0.7 (0.2, 1.1)	5.8	4.9 (3.9, 6.0)
CBSA type						
Metro	-3.8	-4.7 (-5.7, -3.8)	1.4	1.8 (1.5, 2.1)	6.9	8.2 (7.5, 8.9)
Micro	-1.0	-3.0 (-4.0, -2.0)	0.9	1.0 (0.7, 1.3)	4.8	5.8 (4.8, 6.8)
Rural	-1.4	-3.7 (-4.7, -2.7)	0.6	0.6 (0.3, 1.0)	3.4	4.5 (3.7, 5.4)
Ownership						
For-profit	-3.0	-3.9 (-4.9, -2.8)	1.4	1.2 (0.8, 1.6)	7.1	6.7 (5.8, 7.6)
Non-profit	-2.7	-3.7 (-4.7, -2.8)	1.0	1 (0.8, 1.3)	5.8	5.7 (4.9, 6.4)
Teaching class						
Major	-8.4	-6.9 (-9.7, -4.2)	0.3	0.7 (0.1, 1.4)	6.6	6.6 (5.2, 8)

Hospital characteristic	10 th percentile		50 th percentile		90 th percentile	
	Unadjusted	Adjusted (CI)	Unadjusted	Adjusted (CI)	Unadjusted	Adjusted (CI)
Minor	-3.7	-2.4 (-3, -1.9)	1.1	1.2 (0.9, 1.5)	6.7	5.9 (5.1, 6.7)
Non-teaching	-2.0	-2 (-2.5, -1.6)	1.1	1.4 (1.2, 1.6)	5.9	6.0 (5.3, 6.7)
Safety net status						
Non-safety net	-3.0	-4.1 (-5, -3.2)	0.9	0.6 (0.3, 0.8)	5.4	4.7 (4.2, 5.3)
Safety net	-1.6	-3.5 (-4.5, -2.5)	1.9	1.7 (1.3, 2.1)	8.7	7.6 (6.4, 8.8)
Racial inclusivity score						
Hospital size						
Extra small	-1.1	-1.1 (-1.8, -0.4)	0.0	0 (0, 0)	0.2	1.6 (1.3, 1.8)
Small	-1.6	-1.2 (-1.9, -0.5)	-0.1	0 (-0.1, 0)	0.2	1.6 (1.3, 1.9)
Medium	-2.8	-1.4 (-2.1, -0.8)	-0.1	0 (-0.1, 0)	0.5	1.6 (1.3, 1.9)
Large	-3.2	-1.3 (-2.1, -0.6)	-0.1	0 (0, 0.1)	0.9	1.7 (1.4, 2)
Extra large	-3.6	-1.7 (-2.7, -0.6)	0.0	0.1 (0, 0.1)	1.6	1.8 (1.4, 2.1)
CBSA type						
Metro	-3.5	-3.1 (-3.7, -2.4)	-0.2	-0.1 (-0.1, -0.1)	0.8	1.7 (1.4, 2)
Micro	-0.6	-0.5 (-1.1, 0.1)	0.0	0.1 (0.1, 0.1)	0.2	1.6 (1.3, 1.8)
Rural	-0.6	-0.5 (-1.1, 0.1)	0.0	0.1 (0.0, 0.1)	0.2	1.6 (1.4, 1.9)
Ownership						
For-profit	-2.0	-1.3 (-1.9, -0.6)	-0.1	0.0 (0.0, 0.1)	0.9	1.7 (1.4, 2)
Non-profit	-2.4	-1.4 (-2, -0.9)	-0.1	0.0 (0.0, 0.0)	0.5	1.6 (1.3, 1.8)
Teaching class						
Major	-3.2	-1.2 (-2.9, 0.6)	0.0	0.1 (0.1, 0.2)	2.3	2.7 (2.2, 3.2)
Minor	-2.8	-1.3 (-1.6, -1.0)	-0.1	0.0 (-0.1, 0.0)	0.8	1.2 (1.0, 1.5)
Non-teaching	-2.0	-1.6 (-1.9, -1.3)	-0.1	0.0 (-0.1, 0.0)	0.3	1.0 (0.8, 1.2)
Safety net status						
Non-safety net	-2.6	-1.6 (-2.2, -1.0)	-0.1	0.0 (-0.1, 0.0)	0.3	0.9 (0.7, 1.0)
Safety net	-1.2	-1.1 (-1.7, -0.5)	0.0	0.1 (0.0, 0.1)	2.0	2.4 (2.0, 2.8)



eFigure 7. The mean overall inclusivity scores for safety net hospitals and non-safety net hospitals for selected hospital referral regions (HRR). These are the HRRs where there was a significant slope coefficient for safety net status in a multi-level regression with HRR as a random effect.

Results of Quantile Regression for Each Inclusivity Measure

Income Inclusivity

At the 90th percentile of income inclusivity scores (eFigure 4) major teaching versus non-teaching was 4.2 points greater (adjusted 5.9, CI: 1.4 to 10.2; $p = 0.006$) and 3.2 points greater (adjusted 6.3, CI: 1.4 to 10.2; $p = 0.002$) versus minor teaching hospitals. Hospitals at the lowest 10th percentile of income inclusivity scores tended to be metro-area and major teaching hospitals. The 10th percentile score difference was -8.6 points for non-teaching (adjusted -6.6, CI: -12.7 to -0.5; $p = 0.032$) and -6.4 points for minor teaching (adjusted -6.2, CI: -12.3 to -0.1; $p = 0.044$) hospitals.

Education Inclusivity

For education inclusivity (eFigure 5), the hospitals with the highest 90th percentile scores were metro-area, for-profit and safety net. The difference in the 90th percentile education score for for-profit versus non-profit hospitals was 1.3 points (adjusted 1.0, CI: 0.3 to 1.8, $p = 0.004$). The hospitals with the lowest 10th percentile education inclusivity scores were metro-area, non-safety net hospitals and major teaching hospitals. The difference in the 10th percentile education inclusivity score for major teaching hospitals versus minor was -4.8 points (adjusted -4.5, CI: -7.9 to -1.2 points; $p = 0.004$) and was -6.4 points (-4.9, CI: -8.3 to -1.5; $p = 0.002$) for non-teaching hospitals.

Racial Inclusivity

Safety net hospitals and major teaching hospitals were prominent at the highest 90th percentile of scores for racial inclusivity (eFigure 6).

Unlike the income and education scores, at the 90th percentile scores for race, there were no differences between metro micro or rural areas. There were differences in racial inclusivity by teaching status at the

90th percentile: major teaching hospitals were 1.5 points higher than minor teaching hospitals (adjusted 1.5, CI: 0.8 to 2.1; $p < 0.001$), and 2.0 points higher than non-teaching hospitals (adjusted 1.7, CI: 1.1 to 2.3; $p = 0.025$).

The hospitals with the lowest 10th percentile racial inclusivity scores were metro-area hospitals and non-safety net hospitals. The difference in the 10th percentile score for metro- versus rural area hospitals was -2.9 points (adjusted -2.6, CI: -3.2 to -2.0; $p < 0.001$), and versus micro-area hospitals was -2.9 points (adjusted -2.6, CI: -3.1 to -2.0; $p < 0.001$).