

## Supplementary Materials for

### Single-dose SARS-CoV-2 vaccine in a prospective cohort of Covid-19 patients

Marit J. van Gils<sup>1</sup>, Hugo D. van Willigen<sup>1#</sup>, Elke Wynberg<sup>1,2#</sup>, Alvin X. Han<sup>1</sup>, Karlijn van der Straten<sup>1,3</sup>, Anouk Verveen<sup>4</sup>, Romy Lebbink<sup>2</sup>, Maartje Dijkstra<sup>2,3</sup>, Judith A. Burger<sup>1</sup>, Melissa Oomen<sup>1</sup>, Khadija Tejjani<sup>1</sup>, Joey H. Bouhuijs<sup>1</sup>, Brent Appelman<sup>5</sup>, Ayesha H.A. Lavell<sup>6</sup>, Meliawati Poniman<sup>1</sup>, Tom G. Caniels<sup>1</sup>, Ilja Bontjer<sup>1</sup>, Lonneke A. van Vught<sup>5,7</sup>, Alexander P.J. Vlaar<sup>7</sup>, Jonne J. Sikkens<sup>6</sup>, Marije K. Bomers<sup>6</sup>, Rogier W. Sanders<sup>1,8</sup>, Neeltje A. Kootstra<sup>9</sup>, Colin Russell<sup>1</sup>, Maria Prins<sup>2,3</sup>, Godelieve J. de Bree<sup>3‡</sup>, Menno D. de Jong<sup>1‡</sup>, RECOVERED Study Group\*

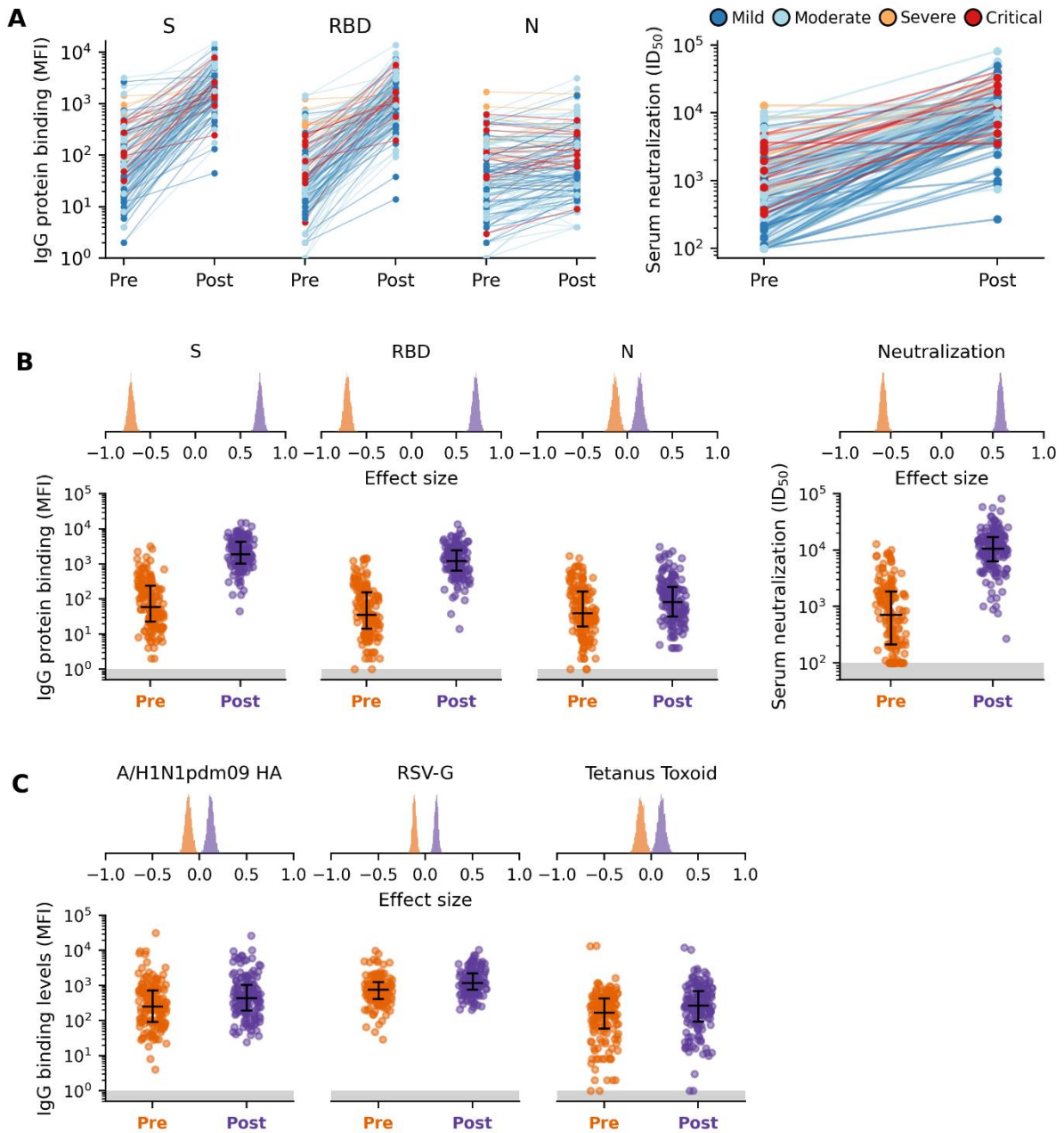
Correspondence to: [m.d.dejong@amsterdamumc.nl](mailto:m.d.dejong@amsterdamumc.nl); [g.j.debree@amsterdamumc.nl](mailto:g.j.debree@amsterdamumc.nl)

**This PDF file includes:**

Figure S1 to S4

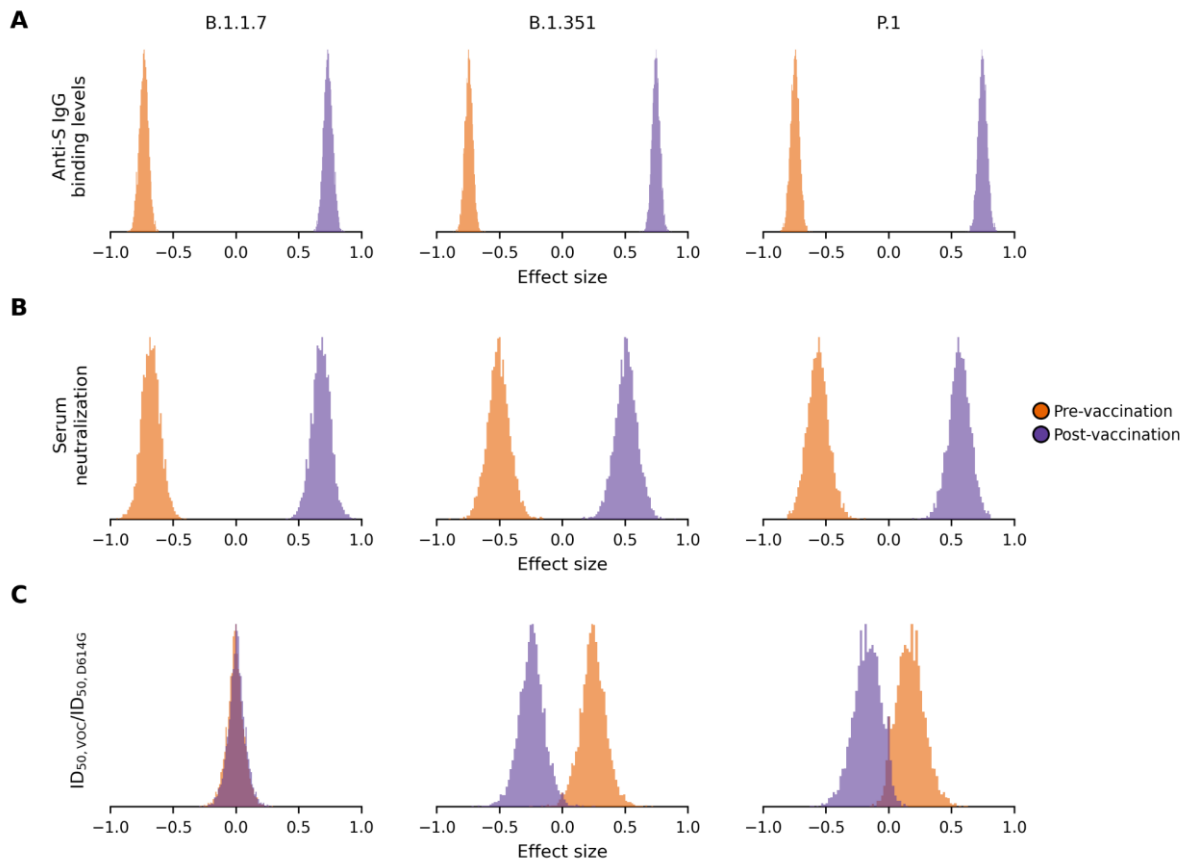
Table S1 to S6

Supplementary Methods



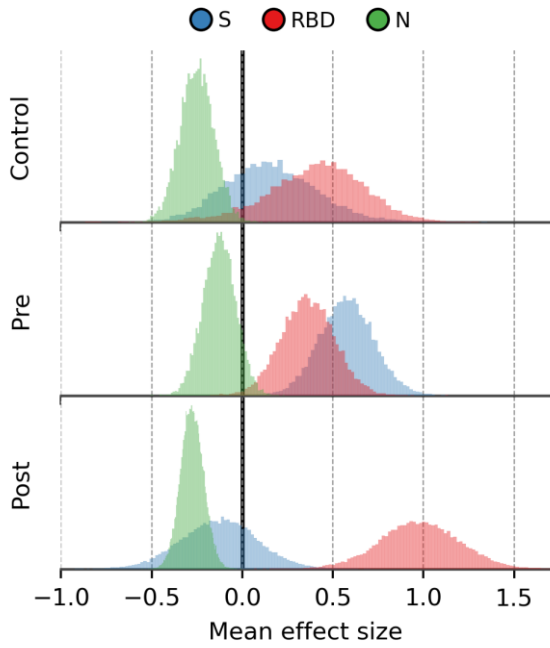
**Figure S1: Anti-SARS-CoV-2 antibody responses after mRNA vaccination**

(A) Paired pre- and post-vaccination IgG binding levels to S, RBD and N protein (left panel) and serum neutralization levels to WT SARS-CoV-2 (right panel). Each line between pre- and post-vaccination data points show the changes in binding levels for a study participant (colored by disease severity). (B) Pre- (orange) and post-vaccination (purple) distributions of IgG binding levels to S, RBD and N (left panel) and serum neutralization of SARS-CoV-2 (right panel). (C) Pre- and post-vaccination distributions of IgG binding levels to other human pathogens including influenza A/H1N1pdm09 haemagglutinin (HA) protein, respiratory syncytial virus glycoprotein (RSV-G) and Tetanus toxoid. The corresponding distribution of mean effect size estimates (Table S3) using a Bayesian ANOVA model is shown above each response distribution plot for (B) and (C).



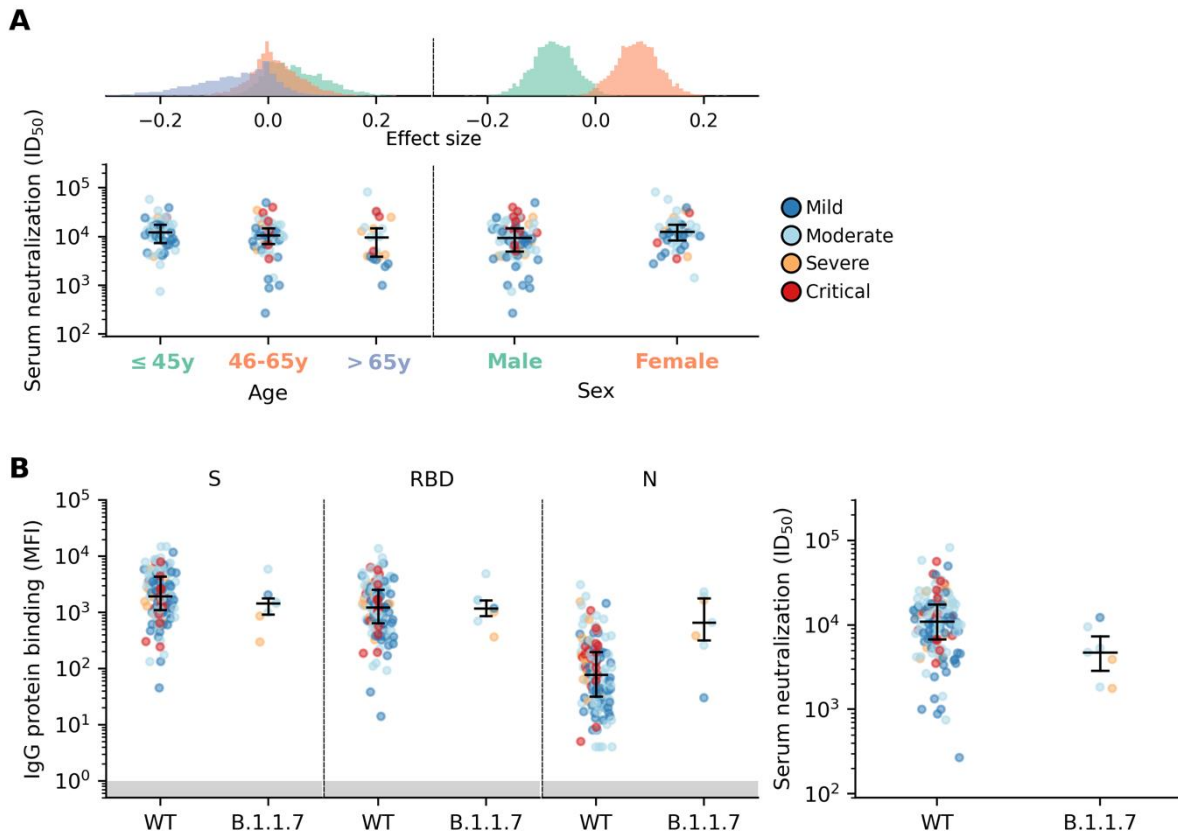
**Figure S2: Effect size estimates of pre- and post-vaccination antibody response after mRNA vaccination**

Pre- (orange) and post-vaccination (purple) distributions of mean effect size estimates (Table S4) using a Bayesian ANOVA model for **(A)** anti-S IgG binding, **(B)** serum neutralization levels and **(C)** ratio of neutralization against VOC to WT (D614G) for lineage B.1.1.7, B.1.351 and P.1.



**Figure S3: Joint contributions of IgG binding to different SARS-CoV-2 antigens on control pre- and post-vaccination serum neutralization levels.**

The mean effects across study participants were estimated using a Bayesian multilevel model. All continuous predictors were mean-centered and scaled such that effect sizes shown can be compared on a common scale. S, spike protein; RBD, receptor binding domain protein; N, nucleocapsid protein



**Figure S4: Anti-SARS-CoV-2 antibody responses after mRNA vaccination stratified by age, sex and infection by lineage B.1.1.7.**

(A) Distributions of mean effect size estimates using a Bayesian ANOVA model (top) and post-vaccination serum neutralization levels (bottom) of study participants stratified according to age and sex. (B) Distributions of post-vaccination serum IgG binding and neutralization levels of study participants stratified according to the lineage of the infecting virus (wild-type (WT) or B.1.1.7).

**Table S1: Analyses performed using the Bayesian multilevel joint-contribution model**

Analysis	Observed variable	Predictor variable
Correlating pre-vaccination neutralization titers to anti-SARS-CoV-2 IgG binding levels	Pre-vaccination neutralization titers	Pre-vaccination IgG binding levels to spike, RBD and nucleoprotein (all continuous)
Correlating post-vaccination neutralization titers to anti-SARS-CoV-2 IgG binding levels	Post-vaccination neutralization titers	Post-vaccination IgG binding levels to spike, RBD and nucleoprotein (all continuous)
Correlating post-vaccination neutralization titers to participant-specific meta variables	Post-vaccination neutralization titers	Age (categorical; ≥45years, 46-65years, >65years) Sex (binary, male or female) Severity (categorical; mild, moderate, severe / critical) Time since symptom onset (categorical; ≥6 months, 7-12 months, >12 months) Pre-vaccination neutralization titers (continuous) Comorbidities (i.e. cancer, cardiovascular diseases, chronic respiratory disease, diabetes mellitus, obesity; binary, presence or absence) Participant infected with the B.1.1.7 lineage variant (i.e. binary, presence or absence)

**Table S2: Symptoms post-vaccination**

Side effects	No. of participants (%)
Local	
Injection site pain	130 (83.9%)
Injection site redness	8 (5.2%)
Injection site swollen	19 (12.3%)
Systemic	
Fatigue	75 (48.4%)
Fever	31 (20.0%)
Headache	55 (35.5%)
Cold shivers	34 (21.9%)
Myalgia	41 (26.5%)
Arthralgia	13 (8.4%)
Nausea/vomiting	10 (6.5%)
Diarrhoea	6 (3.9%)

**Table S3: Bayesian ANOVA regression results: IgG binding**

IgG binding levels (MFI)				Bayesian ANOVA results				
Variable	Interquartile range			Variable	95% credible interval		ESS	$\hat{R}$
	Median	Lower	Upper		Lower	Upper		
Anti-S IgG against WT SARS-CoV-2								
Control	887.3	479.9	1649.6	Control	0.14	0.33	962	1.00
Pre	60.0	23.0	242.0	Pre	-0.91	-0.74	956	1.00
Post	1888.0	1028.0	4233.0	Post	0.52	0.67	954	1.00
				Diff (Post-Control)	0.23	0.51		
				Diff (Pre-Control)	-1.24	-0.91		
Fold change (Post-Pre/Pre)	29.4	9.1	92.1	Diff (Post-Pre)	<b>1.30</b>	<b>1.55</b>		
Anti-RBD IgG against WT SARS-CoV-2								
Control	1406.4	725.1	2543.1	Control	0.40	0.59	1041	1.01
Pre	36.0	14.5	158.0	Pre	-1.05	-0.87	1040	1.01
Post	1217.0	643.0	2457.0	Post	0.40	0.55	1035	1.01
				Diff (Post-Control)	-0.17	0.12		
				Diff (Pre-Control)	-1.64	-1.29		
Fold change (Post-Pre/Pre)	27.6	10.3	70.8	Diff (Post-Pre)	<b>1.29</b>	<b>1.57</b>		
Anti-N IgG against WT SARS-CoV-2								
Control	5.5	3.1	9.4	Control	-0.78	-0.62	799	1.01
Pre	40.0	16.5	164.0	Pre	0.12	0.30	788	1.01
Post	83.0	32.0	224.0	Post	0.41	0.57	791	1.01
				Diff (Post-Control)	1.05	1.32		
				Diff (Pre-Control)	0.76	1.06		
Fold change (Post-Pre/Pre)	0.9	0.0	2.5	Diff (Post-Pre)	<b>0.14</b>	<b>0.43</b>		
Tetanus toxoid								
Pre	168.0	60.0	435.0	Pre	-0.19	-0.03	763	1.01
Post	272.0	95.0	703.0	Post	0.03	0.19	757	1.01
Fold change (Post-Pre/Pre)	0.6	-0.1	2.7	Diff (Post-Pre)	<b>0.05</b>	<b>0.37</b>		
RSV G								
Pre	771.0	421.0	1255.5	Pre	-0.16	-0.07	771	1.01
Post	1192.0	776.0	2252.0	Post	0.07	0.16	765	1.01
Fold change (Post-Pre/Pre)	0.6	-0.1	2.4	Diff (Post-Pre)	<b>0.15</b>	<b>0.31</b>		
A/H1N1pdm09 HA								
Pre	252.0	92.0	730.0	Pre	-0.19	-0.05	982	1.00
Post	446.0	198.0	1052.0	Post	0.05	0.19	990	1.00
Fold change (Post-Pre/Pre)	0.7	-0.1	2.6	Diff (Post-Pre)	<b>0.10</b>	<b>0.37</b>		



Anti-S IgG against B.1.1.7							
Pre	36.0	13.0	147.0	Pre	-0.81	-0.67	1227 1.00
Post	1212.0	654.0	2582.0	Post	0.67	0.81	1251 1.00
Fold change (Post-Pre/Pre)	31.2	11.0	93.8	Diff (Post-Pre)	<b>1.33</b>	<b>1.62</b>	
Anti-S IgG against B.1.351							
Pre	38.0	14.0	138.5	Pre	-0.81	-0.69	1271 1.00
Post	1276.0	736.0	2844.0	Post	0.69	0.81	1277 1.00
Fold change (Post-Pre/Pre)	36.6	10.5	104.5	Diff (Post-Pre)	<b>1.37</b>	<b>1.62</b>	
Anti-S IgG against P.1							
Pre	25.0	9.0	89.5	Pre	-0.81	-0.68	1048 1.00
Post	824.0	469.0	1917.0	Post	0.68	0.81	1052 1.00
Fold change (Post-Pre/Pre)	31.0	10.9	103.9	Diff (Post-Pre)	<b>1.35</b>	<b>1.63</b>	

\*ESS = Effective sample size

**Table S4: Bayesian ANOVA regression results: Serum neutralization**

Serum neutralization (ID <sub>50</sub> )				Bayesian ANOVA results				
Variable	Median	Interquartile range		Variable	95% credible interval		ESS	$\hat{R}$
		Lower	Upper		Lower	Upper		
WT (D614G) SARS-CoV-2 - entire cohort								
Control	1863.0	1321.0	3020.0	Control	-0.16	-0.02	852	1.00
Pre	714.0	213.0	1866.5	Pre	-0.61	-0.46	855	1.00
Post	10635.0	6312.0	17128.0	Post	0.56	0.67	856	1.00
				Post-Control	0.59	0.81		
				Pre-Control	-0.59	-0.33		
Fold change (Post-Pre/Pre)	12.5	5.2	39.6	Diff (Post-Pre)	<b>1.05</b>	<b>1.27</b>		
WT (D614G) SARS-CoV-2 - randomly selected 20 participants								
Pre	489.5	211.4	1753.3	Pre	-0.78	-0.49	1025	1.00
Post	12902.0	7674.0	17982.8	Post	0.49	0.78	1027	1.00
Fold change (Post-Pre/Pre)	23.4	9.5	37.0	Diff (Post-Pre)	<b>0.98</b>	<b>1.56</b>		
B.1.1.7								
Pre	398.4	100.0	1068.8	Pre	-0.82	-0.52	1171	1.00
Post	8261.5	7052.5	11410.8	Post	0.52	0.82	1159	1.00
Fold change (Post-Pre/Pre)	29.8	7.2	70.4	Diff (Post-Pre)	<b>1.05</b>	<b>1.64</b>		
B.1.351								
Pre	190.4	100.0	885.3	Pre	-0.69	-0.33	1069	1.00
Post	3297.5	1767.0	7220.0	Post	0.33	0.69	1050	1.00
Fold change (Post-Pre/Pre)	9.1	6.4	21.2	Diff (Post-Pre)	<b>0.67</b>	<b>1.37</b>		
P.1								
Pre	438.8	105.9	1364.0	Pre	-0.73	-0.39	1465	1.00
Post	7099.5	3940.3	11111.8	Post	0.39	0.73	1481	1.00
Fold change (Post-Pre/Pre)	10.5	5.7	36.8	Diff (Post-Pre)	<b>0.78</b>	<b>1.46</b>		
WT(D614G) v. B.1.1.7 (Pre-vaccination)								
WT	489.5	211.4	1753.3	WT	-0.08	0.25	1011	1.01
VOC	398.4	100.0	1068.8	VOC	-0.25	0.08	1002	1.01
				Diff (VOC-WT)	-0.50	0.16		
WT(D614G) v. B.1.351 (Pre-vaccination)								
WT	489.5	211.4	1753.3	WT	-0.07	0.28	956	1.00
VOC	190.4	100.0	885.3	VOC	-0.28	0.07	945	1.00
				Diff (VOC-WT)	-0.56	0.13		
WT(D614G) v. P.1 (Pre-vaccination)								
WT	489.5	211.4	1753.3	WT	-0.11	0.21	465	1.01
VOC	438.8	105.9	1364.0	VOC	-0.21	0.11	471	1.01
				Diff (VOC-WT)	-0.42	0.23		

WT(D614G) v. B.1.1.7 (Post-vaccination)							
WT	12902.0	7674.0	17982.8	WT	-0.04	0.14	688 1.01
VOC	8261.5	7052.5	11410.8	VOC	-0.14	0.04	698 1.01
				Diff (VOC-WT)	-0.28	0.07	
WT(D614G) v. B.1.351 (Post-vaccination)							
WT	12902.0	7674.0	17982.8	WT	0.12	0.38	1065 1.00
VOC	3297.5	1767.0	7220.0	VOC	-0.38	-0.12	1076 1.01
				Diff (VOC-WT)	<b>-0.76</b>	<b>-0.23</b>	
WT(D614G) v. P.1 (Post-vaccination)							
WT	12902.0	7674.0	17982.8	WT	-0.01	0.24	976 1.00
VOC	7099.5	3940.3	11111.8	VOC	-0.24	0.01	978 1.00
				Diff (VOC-WT)	-0.48	0.02	
B.1.1.7/WT ratio							
Pre	0.82	0.56	1.06	Pre	-0.14	0.14	738 1.00
Post	0.73	0.58	1.02	Post	-0.14	0.14	676 1.00
				Diff (Post-Pre)	-0.28	0.28	
B.1.351/WT ratio							
Pre	0.85	0.53	1.00	Pre	0.04	0.45	937 1.00
Post	0.36	0.20	0.44	Post	-0.45	-0.04	895 1.01
				Diff (Post-Pre)	<b>-0.90</b>	<b>-0.08</b>	
P.1/WT ratio							
Pre	0.90	0.69	1.36	Pre	-0.03	0.38	742 1.00
Post	0.59	0.44	0.80	Post	-0.38	0.03	737 1.00
				Diff (Post-Pre)	-0.76	0.05	

\*ESS = Effective sample size

**Table S5: Characteristics of study participants included in vaccine response - meta variables regression analysis**

	No. of participants (%)
Total	139
Age (median = 50y. range = (22y. 80y))	
≥45 y	53 (38.1%)
46-65 y	63 (45.3%)
>65 y	23 (16.5%)
Sex	
Female	53 (38.1%)
Male	86 (61.9%)
Severity	
Mild	49 (35.3%)
Moderate	62 (44.6%)
Severe	13 (9.4%)
Critical	15 (10.8%)
Time between symptom onset and vaccination (median = 9 months; range = (1 month. 15 months))	
≥6 months	47 (33.8%)
7-12 months	58 (41.7%)
>12 months	34 (24.5%)
Comorbidities	
Cancer	8 (5.8%)
Cardiovascular disease	23 (16.5%)
Chronic respiratory disease	19 (13.7%)
Diabetes Mellitus	10 (7.2%)
Obesity	25 (18.0%)

**Table S6: Bayesian multilevel regression results: Post-vaccination neutralization titers v. participants' metadata.**

Variable	With B.1.1.7				Without B.1.1.7			
	95% credible interval		ESS*	$\hat{R}$	95% credible interval		ESS	$\hat{R}$
Lower	Upper	Lower			Upper			
Age	-0.29	-0.05	5758	1.00	-0.29	-0.04	6872	1.00
Sex	0.04	0.32	4732	1.00	0.03	0.32	6387	1.00
Severity	-0.02	0.17	4242	1.00	-0.01	0.17	6681	1.00
Time since symptom onset	-0.07	0.15	4148	1.00	-0.09	0.13	6196	1.00
Pre-vaccination neutralization	0.16	0.45	2258	1.00	0.18	0.47	3359	1.00
Cancer	-0.48	0.21	3667	1.00	-0.48	0.19	7007	1.00
Cardiovascular disease	-0.18	0.27	3959	1.00	-0.19	0.27	5622	1.00
Chronic respiratory disease	-0.32	0.12	1540	1.00	-0.31	0.12	5602	1.00
Diabetes Mellitus	-0.48	0.1	5077	1.00	-0.49	0.08	7814	1.00
Obesity	-0.14	0.23	6954	1.00	-0.12	0.25	7814	1.00
B.1.1.7 infection	-0.88	0.06	4479	1.00				

\*ESS = Effective sample size

## Supplementary Methods

To identify and estimate the effect size of different predictor variables on the observed pseudovirus SARS-CoV-2 neutralization data, we used a Bayesian hierarchical model that partially pooled effect size estimates across all study participants  $l$ . We assumed a linear correlation between the mean-centered predicted log neutralization values  $\langle Y \rangle$  and predictor variables  $X_i$ :

$$\langle Y \rangle = \beta_{l,0} + \sum_i \beta_{l,i} X_i$$

where  $\beta_{l,i}$  is the normalized effects of variable  $i$  for participant  $l$  and  $\beta_{l,0}$  is the participant-specific intercept.

We assumed that the observed mean-centered and scaled neutralization values  $Y$  follow a Student-T distribution about the predicted  $\langle Y \rangle$  with error-term standard deviation  $\sigma_Y$  with  $\nu_Y$  degrees of freedom:

$$Y \sim T(\nu_Y, \langle Y \rangle, \sigma_Y)$$

We assumed that  $\nu$  is exponentially distributed with a mean of 30 such that high prior probability was allocated over parameter values that describe the range from normal to heavy-tailed data under the Student-T distribution (Kruschke, 2011):

$$\nu \sim \text{Exp}\left(\frac{1}{30}\right)$$

The intercepts  $\beta_{l,0}$  were assumed to be normally distributed about a common mean intercept  $\langle \beta_0 \rangle$  with standard deviation  $\sigma_{\beta_0}$ :

$$\beta_{l,0} \sim N(\langle \beta_0 \rangle, \sigma_{\beta_0})$$

The participant-specific effect sizes  $\beta_{l,i}$  of variable  $i$  were assumed to be normally distributed about a common mean effect size  $\langle \beta_i \rangle$  with a predictor-specific standard deviation  $\sigma_{\beta_i}$ :

$$\beta_{l,i} \sim N(\langle \beta_i \rangle, \sigma_{\beta_i})$$

Weakly informative priors were placed on all standard deviation terms to constrain parameter inferences within biologically and mathematically plausible values (Gelman, 2006):

$$\sigma_Y \sim \text{Half-Normal}(0.1)$$

$$\sigma_{\beta_0} \sim \text{Half-Normal}(0.1)$$

$$\sigma_{\beta_i} \sim \text{Half-Normal}(0.1)$$

A weakly informative Gaussian prior was also placed for the mean intercept  $\langle \beta_0 \rangle$  while a weakly informative Student-T prior was placed on the mean effect size  $\langle \beta_i \rangle$  for each predictor  $i$ :

$$\langle \beta_0 \rangle \sim N(0.1)$$

$$\langle \beta_i \rangle \sim T(3, 0, 2.5)$$

We performed three different analyses with the aforementioned model correlating different predictors to mean-centered log neutralisation values (Table S1).

We also implemented a Bayesian hierarchical generalisation of the one-way ANOVA model to estimate the bounds on the effects of individual groups  $j$  of a nominal predictor  $i$  on an observed metric variable. We assumed that the predicted mean-centered metric variable  $\langle Y_i \rangle$  is given by:

$$\langle Y_i \rangle = \beta_{i,0} + \sum_j \beta_{i,j} x_{i,j}$$

where  $x_{i,j}$  is a Boolean variable denoting if an individual belongs to subgroup  $j$  for the nominal predictor  $i$ .

We assumed that the observed metric data ( $Y_i$ ) can be described by the Student-t distribution with  $\nu$  degrees of freedom. the predicted location  $\langle Y_i \rangle$  and heterogenous variances for individual groups  $\sigma_{i,[j]}$ :

$$Y \sim T(\nu, \langle Y_i \rangle, \sigma_{i,[j]})$$

The intercept  $\beta_{i,0}$  was again placed with a weakly informative Gaussian prior:

$$\beta_{i,0} \sim N(0,1)$$

We placed Student-T prior on the effect size  $\beta_{i,j}$  for each subgroup  $j$  of nominal predictor  $i$  centered around zero. with weakly-informative gamma prior on  $\nu_\beta$  degrees of freedom and positive-constrained half-normal prior on the standard deviation error-term  $\sigma_\beta$ :

$$\begin{aligned} \beta_{i,j} &\sim T(\nu_\beta, 0, \sigma_\beta) \\ \nu_\beta &\sim \text{Gamma}(2, 0.1) \\ \sigma_\beta &\sim \text{Half-Normal}(0.1) \end{aligned}$$

Following Kruschke (Kruschke, 2011). we assumed that  $\nu$  is exponentially distributed with a mean of 30 such that high prior probability was allocated over parameter values that describe the range from normal to heavy-tailed data under the Student-T distribution:

$$\nu \sim \text{Exp}\left(\frac{1}{30}\right)$$

As mentioned earlier. we assumed a heterogenous scale term  $\sigma_{i,j}$  for each subgroup  $j$  that follows a gamma distribution with mode  $\omega$  and standard deviation  $\sigma_\sigma$ . We placed vague gamma priors on both  $\omega$  and  $\sigma_\sigma$  that are broad on the scale of the data by estimating the shape ( $k$ ) and scale ( $\theta$ ) of the priors such that the mode and standard deviation equal to  $\frac{\sigma_{Y_{obs}}}{2}$  and  $2\sigma_{Y_{obs}}$  respectively:

$$\begin{aligned} \sigma_{i,j} &\sim \text{Gamma}\left(k = 1 + \frac{\omega}{\theta}, \theta = \frac{2\sigma_\sigma^2}{\omega + \sqrt{\omega^2 + 4\sigma_\sigma^2}}\right) \\ \omega \text{ or } \sigma_\sigma &\sim \text{Gamma}\left(k = 1 + \frac{\sigma_{Y_{obs}}}{2\theta}, \theta = \frac{2(2\sigma_{Y_{obs}})^2}{\frac{\sigma_{Y_{obs}}}{2} + \sqrt{\left(\frac{\sigma_{Y_{obs}}}{2}\right)^2 + 4(2\sigma_{Y_{obs}})^2}}\right) \end{aligned}$$

We fitted all Bayesian models using Markov Chain Monte carlo (MCMC) with pymc3 (Salvatier et al., 2016). implementing a no-u-turn sampler. Four MCMC chains were ran with at least 4000 burn-in steps and 2000 saved posterior samples. Convergence for all parameters were

verified by checking trace plots. ensuring their  $\hat{R}$  values were  $< 1.05$  with sufficient effective sample size ( $>200$ ).

## References

- Gelman A. 2006. Prior distributions for variance parameters in hierarchical models (comment on article by Browne and Draper). *Bayesian Anal* **1**:515–534. doi:10.1214/06-BA117A
- Kruschke JK. 2011. Doing Bayesian data analysis : a tutorial with R and BUGS. Academic Press.
- Salvatier J. Wiecki T V. Fonnesbeck C. 2016. Probabilistic programming in Python using PyMC3. *PeerJ Comput Sci* **2**:e55. doi:10.7717/peerj-cs.55