

The Impact of Management on Hospital Performance - supplementary appendix

Asaria, Miqdad ^{*1,2}, Gershlick, Benjamin^{2,3}, McGuire, Alistair¹ and Street, Andrew¹

¹Department of Health Policy, London School of Economics and Political Science

²Health Foundation, London

³NHSE/I, London

Contents

1	Data	3
1.1	Data sources	3
1.2	Staff survey questions	3
1.3	List of non-specialist NHS hospital trusts in analysis	4
2	Descriptive statistics	9
2.1	Change in number of managers over time in NHS	9
2.2	Distribution of management, control and outcome variables	10
2.3	Mediators between management input and outcomes	13
3	Examining between and within variation in data	16
3.1	Comparison of variation in management measures, controls and outcomes between hospitals versus within hospitals over time	16
3.2	Exploring the between and within variation in the relationship between management and outcomes	17
4	Alternative specifications of mediation regressions	19
4.1	Number of managers (M_1)	19
4.2	Number of managers (M_3)	20
4.3	Spend on managers in £ million (M_4)	21
5	Mediation of effect of management quantity on outcomes through NHS staff survey management score	22
5.1	Number of managers (M_1)	22
5.2	Number of managers (M_3)	22
5.3	Spend on managers in £ million (M_4)	22

*Contact Author. Email: m.asaria@lse.ac.uk

6	Alternative specifications of management regressions	23
6.1	Net financial position (£ million)	23
6.1.1	Number of managers (M_1)	23
6.1.2	Quality of management (M_2)	24
6.1.3	Number of managers (M_3)	25
6.1.4	Spend on managers in £ million (M_4)	26
6.2	Elective waiting time target met (%)	27
6.2.1	Number of managers (M_1)	27
6.2.2	Quality of management (M_2)	28
6.2.3	Number of managers (M_3)	29
6.2.4	Spend on managers in £ million (M_4)	30
6.3	A&E waiting time target met (%)	31
6.3.1	Number of managers (M_1)	31
6.3.2	Quality of management (M_2)	32
6.3.3	Number of managers (M_3)	33
6.3.4	Spend on managers in £ million (M_4)	34
6.4	Total inpatient admissions	35
6.4.1	Number of managers (M_1)	35
6.4.2	Quality of management (M_2)	36
6.4.3	Number of managers (M_3)	37
6.4.4	Spend on managers in £ million (M_4)	38
6.5	Summary Hospital-level Mortality Indicator	39
6.5.1	Number of managers (M_1)	39
6.5.2	Quality of management (M_2)	40
6.5.3	Number of managers (M_3)	41
6.5.4	Spend on managers in £ million (M_4)	42
7	Impact of responses to individual questions within the NHS staff survey on outcomes	43
7.1	Net financial position (£ million)	43
7.2	Elective waiting time target met (%)	44
7.3	A&E waiting time target met (%)	45
7.4	Total inpatient admissions	46
7.5	Summary Hospital-level Mortality Indicator	47

1 Data

1.1 Data sources

Table 1: Data Sources

Data	Source	URL
Inpatient admissions	NHS Digital	https://digital.nhs.uk/data-and-information/publications/statistical/hospital-admitted-patient-care-activity/2018-19
Accident and emergency target	NHS Digital	https://digital.nhs.uk/data-and-information/publications/statistical/hospital-accident-emergency-activity/2018-19
Inpatient admissions referral to treatment target	NHS England	https://www.england.nhs.uk/statistics/statistical-work-areas/rtt-waiting-times/rtt-data-2018-19/
NHS staff survey management scores	NHS survey coordination centre	https://www.nhsstaffsurveys.com/Page/1064/Latest-Results/2018-Results/
NHS workforce statistics (ESR)	NHS Digital	https://digital.nhs.uk/data-and-information/publications/statistical/nhs-workforce-statistics/september-2018
Summary Hospital-level Mortality Indicator (SHMI)	NHS Digital	https://digital.nhs.uk/data-and-information/publications/clinical-indicators/shmi/
Care quality commission rating	Care quality commission	https://www.cqc.org.uk/about-us/transparency/using-cqc-data
Financial performance of NHS trusts	NHS Improvement	https://improvement.nhs.uk/resources/nhs-providers-trust-accounts-consolidation-tac-data-201718/
Bed Availability and Occupancy Data Ð Overnight	NHS England	https://www.england.nhs.uk/statistics/statistical-work-areas/bed-availability-and-occupancy/bed-data-overnight/

1.2 Staff survey questions

Table 2: Staff Survey Management Questions

7) My immediate manager:	8) Senior managers:
a. encourages those who work for her/him to work as a team	a. I know who the senior managers are here
b. can be counted on to help me with a difficult task at work	b. Communication between senior management and staff is effective
c. gives me clear feedback on my work	c. Senior managers here try to involve staff in important decisions
d. asks for my opinion before making decisions that affect my work	d. Senior managers act on staff feedback
e. is supportive in a personal crisis	
f. takes a positive interest in my health and well-being	
g. values my work	

1.3 List of non-specialist NHS hospital trusts in analysis

Table 3: List of 129 Acute NHS Trusts included in analysis presented in paper with data for 2018/19

Trust Name	Organisation Code	Managers (% of all staff)	Managers (FTE)	Spend on Management (£ millions)	Staff Survey Management Score
Aintree University Hospital	REM	3.27	148.3	8.89	63.7
Airedale	RCF	3.39	85	5.06	67.1
Ashford and St. Peter's Hospitals	RTK	2.44	79.5	5.39	64.2
Barking, Havering and Redbridge University Hospitals	RF4	2.57	149.2	11.51	63.3
Barnsley Hospital	RFF	2.52	74.4	4.09	65.6
Barts Health	R1H	2.07	302.1	19.76	64.2
Basildon and Thurrock University Hospitals	RDD	3.16	133.3	8.68	64.0
Bedford Hospital	RC1	2.34	58.5	3.75	64.0
Blackpool Teaching Hospitals	RXL	4.64	288.4	15.05	64.5
Bolton	RMC	1.73	88.5	5.74	68.4
Bradford Teaching Hospitals	RAE	2.19	112.8	7.39	65.3
Brighton and Sussex University Hospitals	RXH	2.63	192.7	11.47	64.4
Buckinghamshire Healthcare	RXQ	3.88	197.7	11.39	66.2
Calderdale and Huddersfield	RWY	2.42	125.1	6.69	63.0
Cambridge University Hospitals	RGT	2.84	262.8	16.36	66.6
Chelsea and Westminster Hospital	RQM	4.83	261.7	16.06	65.7
Chesterfield Royal Hospital	RFS	1.91	67.1	3.81	65.7
City Hospitals Sunderland	RLN	2.46	112.4	6.61	65.3
Colchester Hospital University	RDE	2.84	230.8	14.27	60.5
Countess of Chester Hospital	RJR	3.11	107.1	5.89	63.9
County Durham and Darlington	RXP	3.03	186.6	10.52	62.8
Croydon Health Services	RJ6	4.31	139.1	8.15	62.2
Dartford and Gravesham	RN7	4.83	139.4	7.87	65.5
Derby Teaching Hospitals	RTG	2.81	289.3	16.63	64.2
Doncaster and Bassetlaw Teaching Hospitals	RP5	3.26	173.7	9.42	61.7

Table 3 continued from previous page

Trust Name	Organisation	Managers	Managers	Spend on Management	Staff Survey
	Code	(% of all staff)	(FTE)	(£ millions)	Management Score
Dorset County Hospital	RBD	3.99	90.1	5.28	66.1
Dudley Group	RNA	1.3	56.1	3.43	62.8
East and North Hertfordshire	RWH	1.45	72.3	5.32	61.9
East Cheshire	RJN	3.64	80.9	4.67	67.5
East Kent Hospitals University	RVV	1.73	132.8	8.44	60.5
East Lancashire Hospitals	RXR	3.24	238.6	13.36	67.7
East Sussex Healthcare	RXC	2.64	159.3	9.62	64.8
Epsom and St Helier University Hospitals	RVR	5.67	252.5	14.94	61.4
Frimley Health	RDU	2.21	177	11.3	68.3
Gateshead Health	RR7	3.2	124.6	7.36	67.8
George Eliot Hospital	RLT	2.67	53.4	3.45	62.1
Gloucestershire Hospitals	RTE	2.16	140.8	8.45	62.7
Great Western Hospitals	RN3	2.32	90.7	5.82	63.9
Guy's and St Thomas'	RJ1	3.71	536.9	35.62	67.1
Hampshire Hospitals	RN5	2.9	151	9.22	61.9
Harrogate and District	RCD	2.58	94.5	5.48	67.0
Hillingdon Hospitals	RAS	4.33	126.2	7.83	62.9
Homerton University Hospital	RQX	3.12	105.3	6.64	67.9
Hull and East Yorkshire Hospitals	RWA	3.6	259.4	14.42	65.4
Imperial College Healthcare	RYJ	4.56	465.5	27.69	62.6
James Paget University Hospitals	RGP	3.45	91.6	5.46	63.4
Kettering General Hospital	RNQ	3.64	125.6	7.1	65.0
King's College Hospital	RJZ	2.63	298.3	19.7	61.7
Kingston Hospital	RAX	3.37	96.8	6.77	66.9
Lancashire Teaching Hospitals	RXN	2.19	151.8	9.36	63.2
Leeds Teaching Hospitals	RR8	1.57	237.3	15.77	68.2
Lewisham and Greenwich	RJ2	3.56	197.8	12.36	65.7
London North West Healthcare	R1K	4.44	337.2	20.51	62.5

Table 3 continued from previous page

Trust Name	Organisation	Managers	Managers	Spend on Management	Staff Survey
	Code	(% of all staff)	(FTE)	(£ millions)	Management Score
Luton and Dunstable University Hospital	RC9	4.25	158.1	9.33	67.3
Maidstone and Tunbridge Wells	RWF	3.4	167.2	9.78	62.8
Medway	RPA	2.43	89	5.8	56.5
Mid Cheshire Hospitals	RBT	2.77	102.8	5.98	65.4
Mid Essex Hospital Services	RQ8	2.73	109.1	6.71	62.7
Mid Yorkshire Hospitals	RXF	3.35	237.5	13.19	63.3
Milton Keynes University Hospital	RD8	4.51	133.5	7.99	64.2
Newcastle Upon Tyne Hospitals	RTD	1.34	170.2	9.08	66.6
Norfolk and Norwich University Hospitals	RM1	1.97	133.7	8.46	61.6
North Bristol	RVJ	4	280.8	16.18	62.3
North Cumbria University Hospitals	RNL	3.04	106.9	6.24	56.8
North Middlesex University Hospital	RAP	6.1	181.7	9.92	64.5
North Tees and Hartlepool	RVW	3.1	140.2	8.11	66.4
North West Anglia	RGN	4.01	214.1	11.69	63.3
Northampton General Hospital	RNS	3.83	164	8.67	63.5
Northern Devon Healthcare	RBZ	4.38	111.4	6.48	68.2
Northern Lincolnshire and Goole	RJL	4.91	256.5	13.82	59.4
Northumbria Healthcare	RTF	4.54	310.1	17.66	68.0
Nottingham University Hospitals	RX1	3.63	472.8	26.36	65.2
Oxford University Hospitals	RTH	2.97	314	18.56	63.8
Pennine Acute Hospitals	RW6	3.37	295.7	17.12	62.3
Plymouth Hospitals	RK9	2.28	141.8	8.99	66.4
Poole Hospital	RD3	2.92	98.2	5.66	65.4
Portsmouth Hospitals	RHU	7.78	493.2	24.63	65.6
Princess Alexandra Hospital	RQW	5.64	168.3	10.05	66.4
Queen Elizabeth Hospital King's Lynn	RCX	3.96	110	6.29	58.7
Rotherham	RFR	3.13	115.1	6.88	62.2
Royal Berkshire	RHW	2.94	136.9	7.93	66.5

Table 3 continued from previous page

Trust Name	Organisation	Managers	Managers	Spend on Management	Staff Survey
	Code	(% of all staff)	(FTE)	(£ millions)	Management Score
Royal Bournemouth and Christchurch Hospitals	RDZ	2.98	118.4	7.23	69.7
Royal Cornwall Hospitals	REF	2.42	114	7.37	61.2
Royal Devon and Exeter	RH8	2.42	167.1	9.61	66.4
Royal Free London	RAL	1.6	132.9	10.05	65.2
Royal Liverpool and Broadgreen University Hospitals	RQ6	5	314.7	17.3	65.4
Royal Surrey County Hospital	RA2	4.15	149.2	9.2	66.5
Royal United Hospitals Bath	RD1	4	177.1	10	64.0
Royal Wolverhampton	RL4	1.83	133	8.5	66.4
Salford Royal	RM3	3.94	285	17.4	64.8
Salisbury	RNZ	2.82	81.2	4.67	65.1
Sandwell and West Birmingham Hospitals	RXK	3.2	190.2	11.92	65.6
Sheffield Teaching Hospitals	RHQ	2.26	315.1	19.57	65.9
Sherwood Forest Hospitals	RK5	4.54	186	10.55	67.0
Shrewsbury and Telford Hospital	RXW	4.84	241	12.75	61.6
South Tees Hospitals	RTR	2.11	156.6	9.2	59.4
South Tyneside	RE9	2.1	58.4	3.19	63.4
South Warwickshire	RJC	3.4	133.4	7.55	66.1
Southend University Hospital	RAJ	0.26	9.8	1.03	65.4
Southport and Ormskirk Hospital	RVY	1.9	47.8	3.33	59.1
St George's University Hospitals	RJ7	2.19	176	11.94	61.4
St Helens and Knowsley Hospitals	RBN	3.23	168.2	12.78	69.7
Stockport	RWJ	3.61	162.9	9.59	63.1
Surrey and Sussex Healthcare	RTP	2.81	102.7	6.85	70.8
Tameside and Glossop Integrated Care	RMP	2.82	95.2	6.02	64.6
Taunton and Somerset	RBA	2.57	102.7	6.11	66.0
Torbay and South Devon	RA9	3.21	163.4	9.63	64.8
United Lincolnshire Hospitals	RWD	2.26	144.8	8.84	58.5
University College London Hospitals	RRV	6.2	493	30.31	65.4

Table 3 continued from previous page

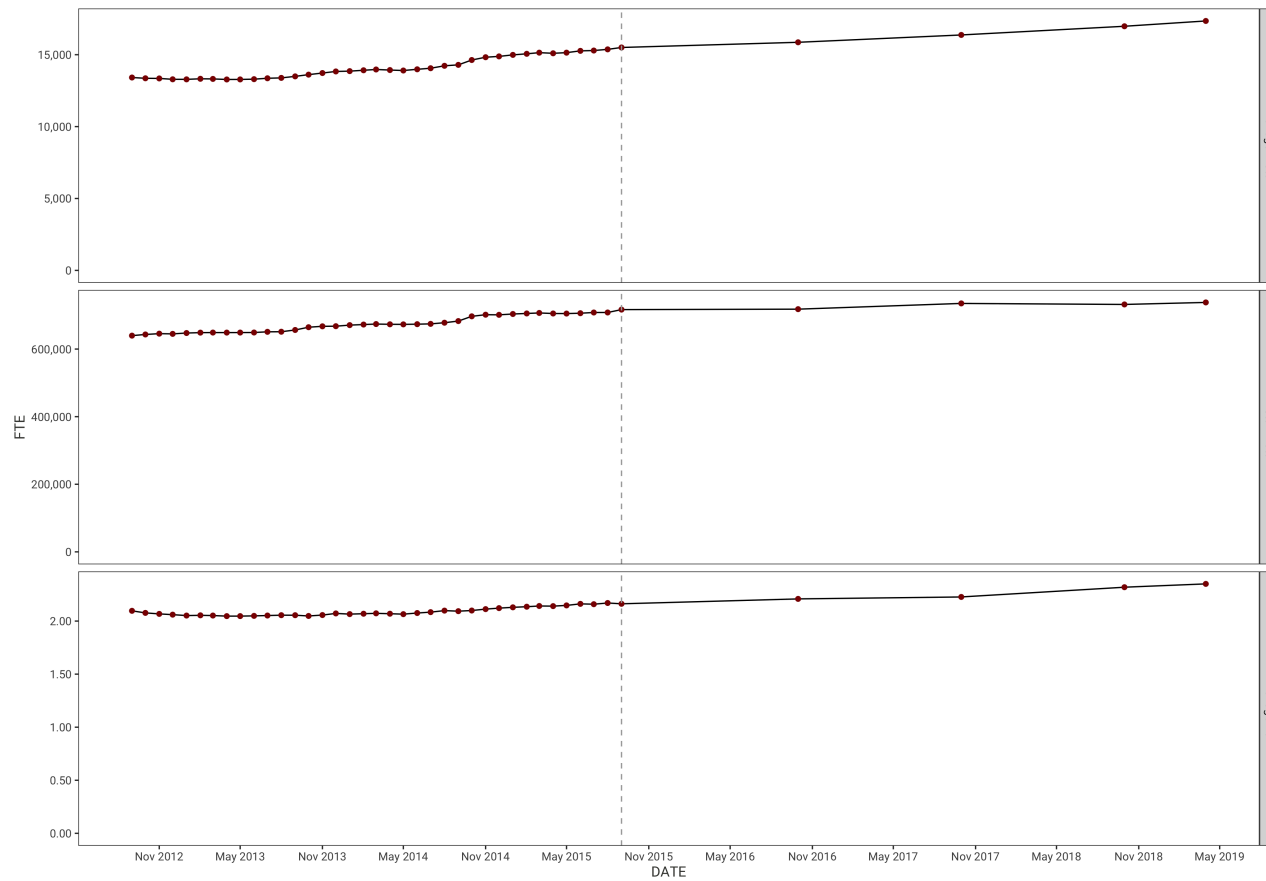
Trust Name	Organisation Code	Managers (% of all staff)	Managers (FTE)	Spend on Management (£ millions)	Staff Survey Management Score
University Hospital Southampton	RHM	5.84	563.3	28.49	67.9
University Hospitals Birmingham	RRK	1.85	327.9	20.13	63.3
University Hospitals Bristol	RA7	2.35	187.7	11.98	65.4
University Hospitals Coventry and Warwickshire	RKB	4.54	322.7	17.82	65.9
University Hospitals of Leicester	RWE	1.5	193.3	12.79	63.0
University Hospitals of Morecambe Bay	RTX	3.39	178.6	10.23	65.4
University Hospitals of North Midlands	RJE	2.36	220.5	12.97	61.7
Walsall Healthcare	RBK	2.78	101.2	5.67	63.5
Warrington and Halton Hospitals	RWW	5.16	180.3	9.96	66.2
West Hertfordshire Hospitals	RWG	4.02	170.6	10.08	67.4
West Suffolk	RGR	4.75	156	8.55	67.5
Western Sussex Hospitals	RYR	2.04	118.1	8.18	66.1
Weston Area Health	RA3	1.06	15.2	1.03	59.2
Whittington Hospital	RKE	4.43	162.8	9.68	64.5
Wirral University Teaching Hospital	RBL	3.39	176.3	9.63	60.8
Worcestershire Acute Hospitals	RWP	2.45	125.1	7.91	60.0
Wrightington, Wigan and Leigh	RRF	3.68	159.7	9.35	64.0
Wye Valley	RLQ	4.2	110.7	6.07	62.2
Yeovil District Hospital	RA4	4.04	79.1	4.69	68.3
York Teaching Hospital	RCB	3.14	220.1	12.4	64.4

∞

2 Descriptive statistics

2.1 Change in number of managers over time in NHS

Figure 1: Managers time series in acute NHS hospital trusts using basic management definition (M_1)



2.2 Distribution of management, control and outcome variables

Figure 2: Distribution of key variables across 129 acute NHS hospital trusts in 2016/17

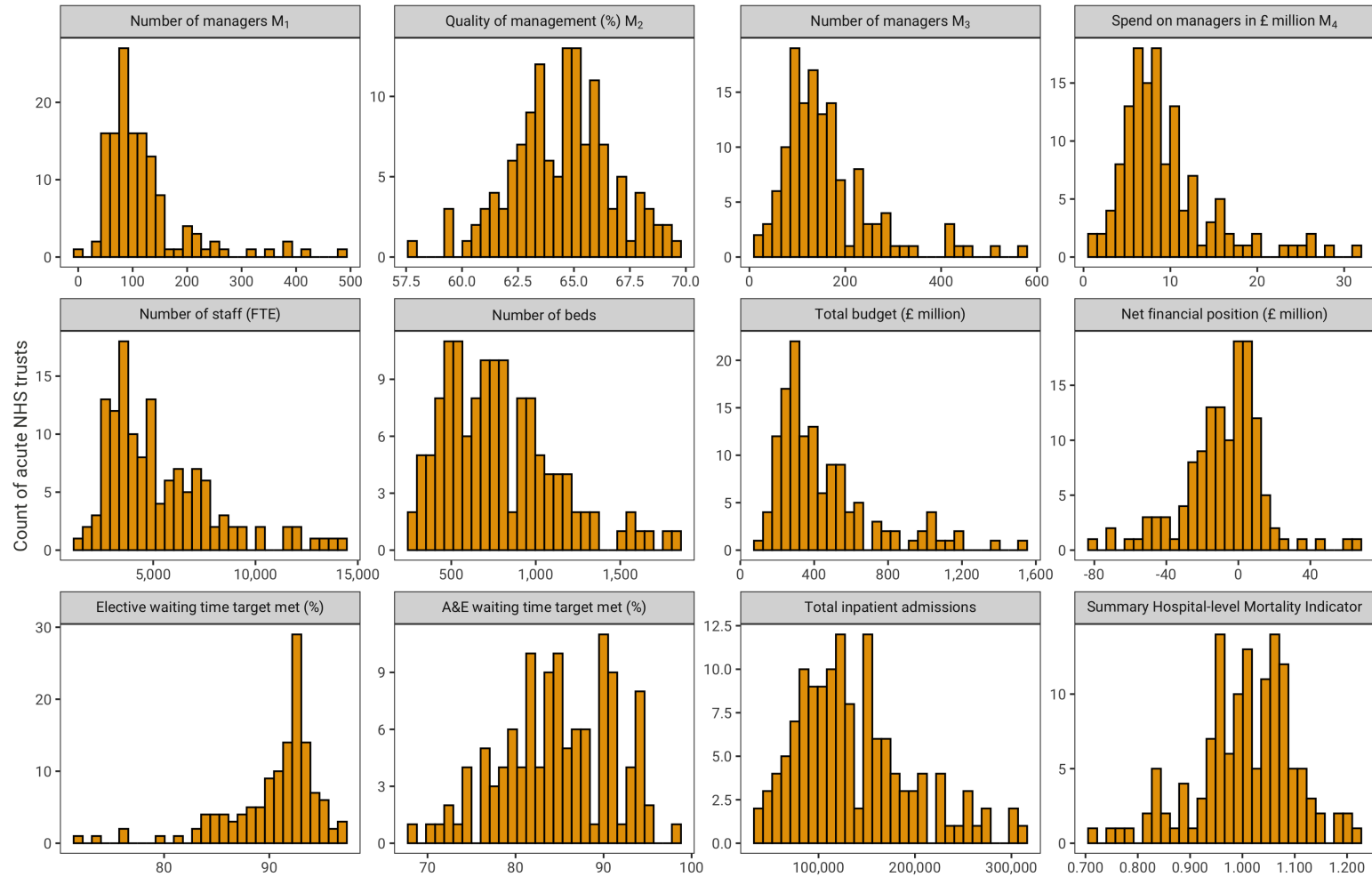


Figure 3: Distribution of key variables across 129 acute NHS hospital trusts in 2017/18

11

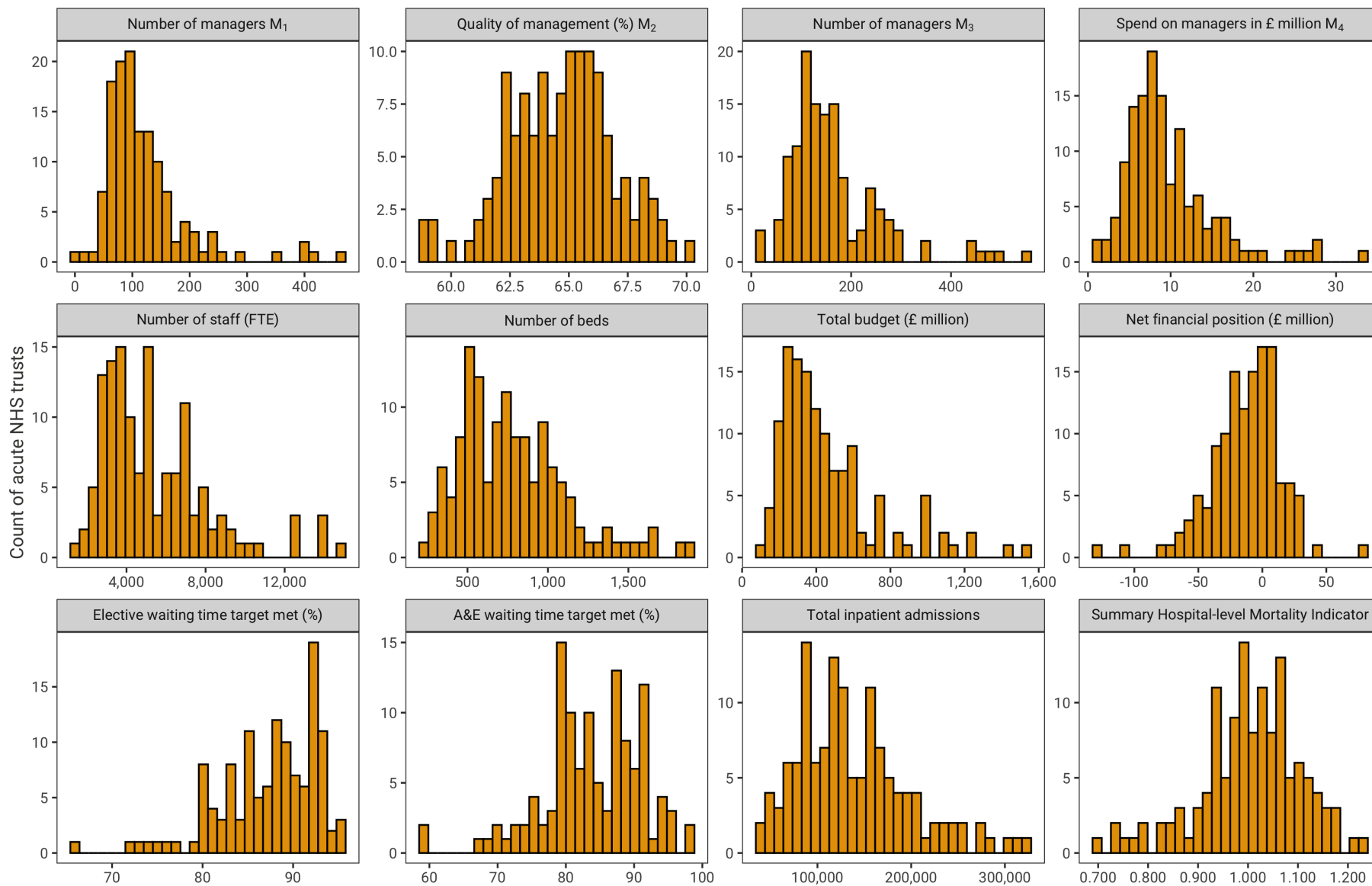
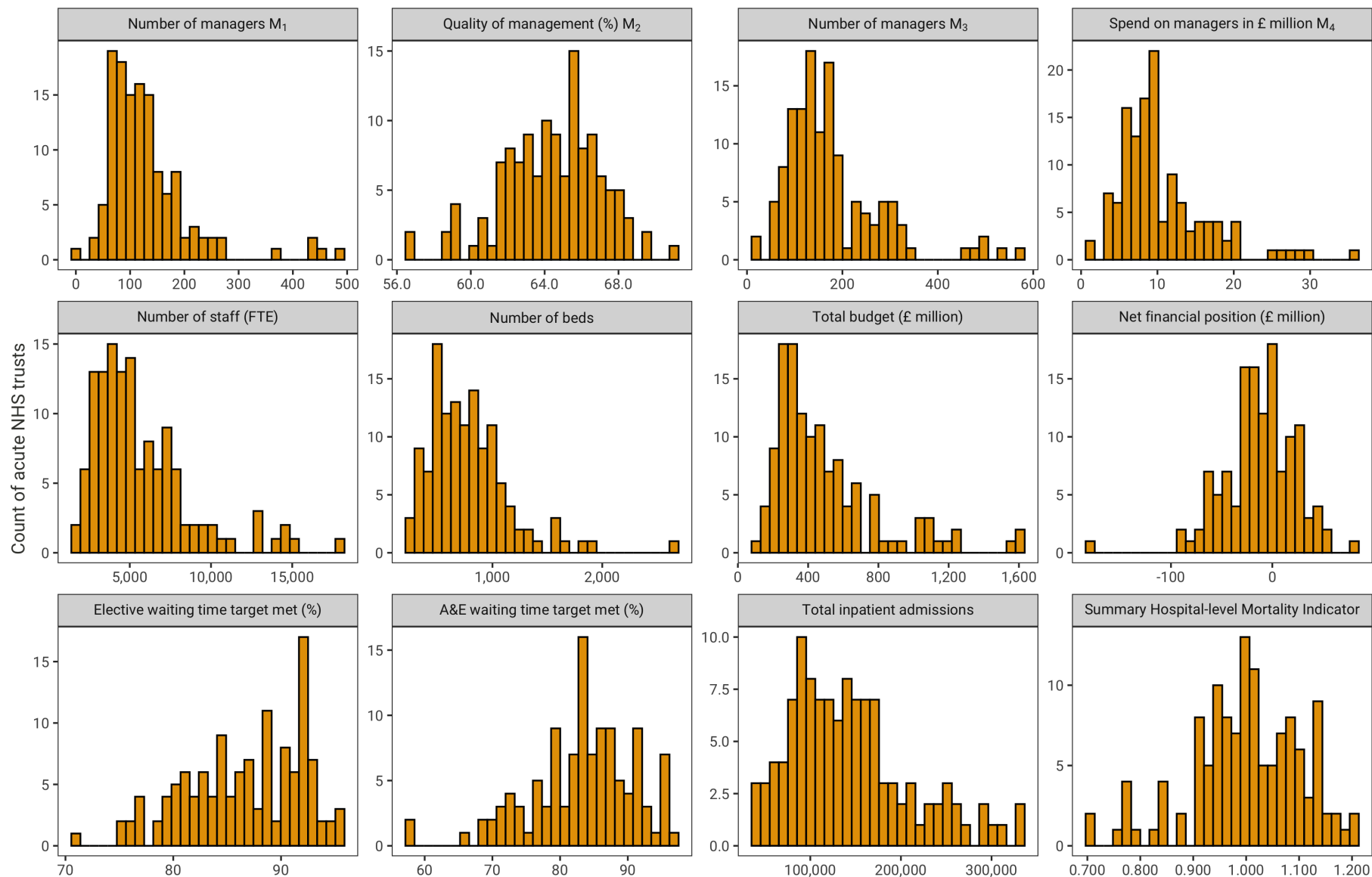


Figure 4: Distribution of key variables across 129 acute NHS hospital trusts in 2018/19



2.3 Mediators between management input and outcomes

Figure 5: Relationship between management input (%) and resources to be managed across 129 acute NHS hospital trusts in 2012/13

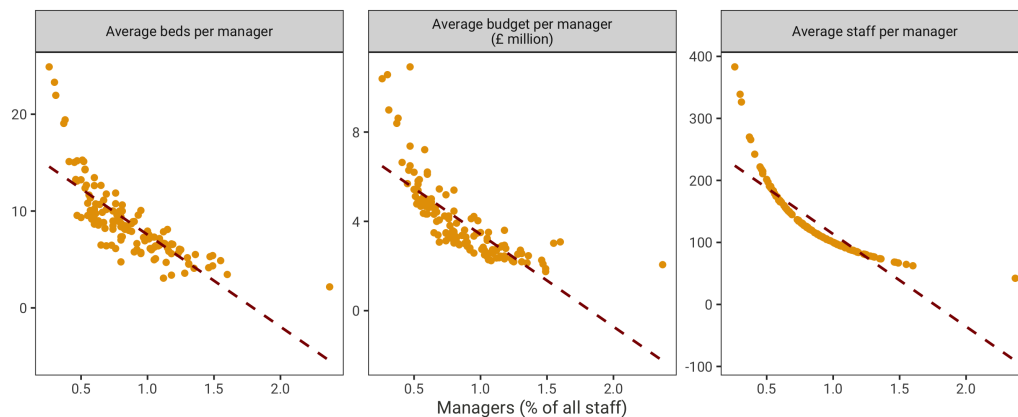


Figure 6: Relationship between management input (%) and resources to be managed across 129 acute NHS hospital trusts in 2013/14

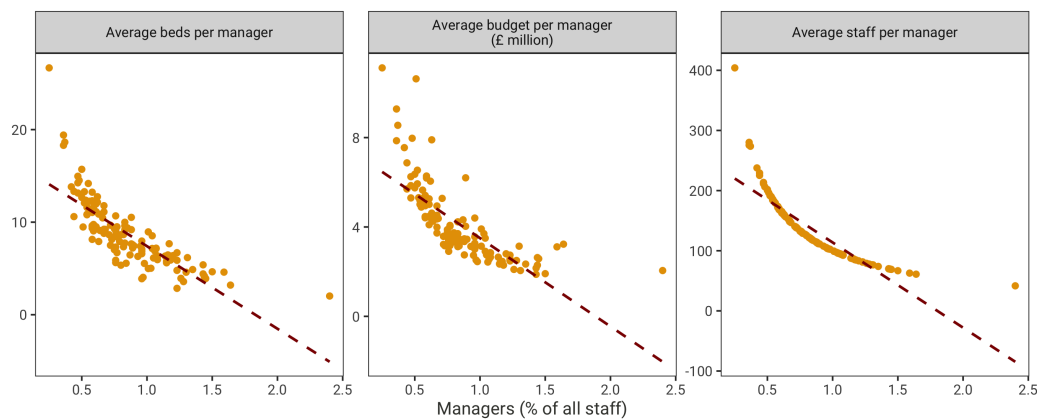


Figure 7: Relationship between management input (%) and resources to be managed across 129 acute NHS hospital trusts in 2014/15

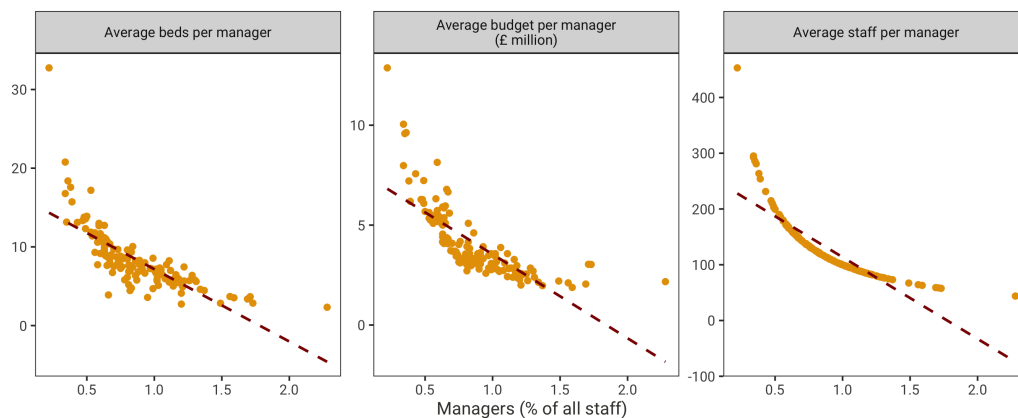


Figure 8: Relationship between management input (%) and resources to be managed across 129 acute NHS hospital trusts in 2015/16

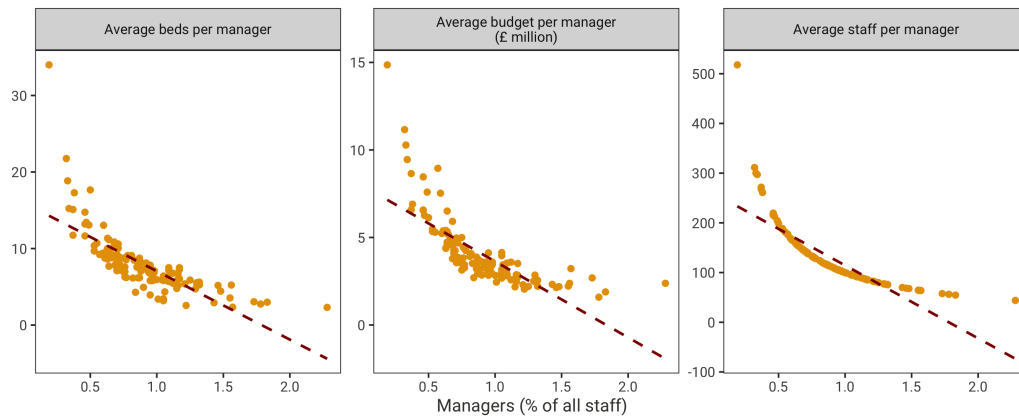


Figure 9: Relationship between management input (%) and resources to be managed across 129 acute NHS hospital trusts in 2016/17

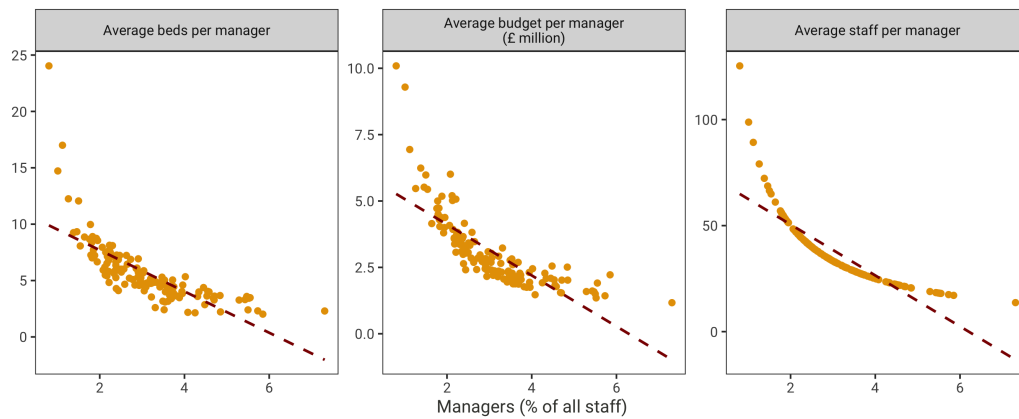
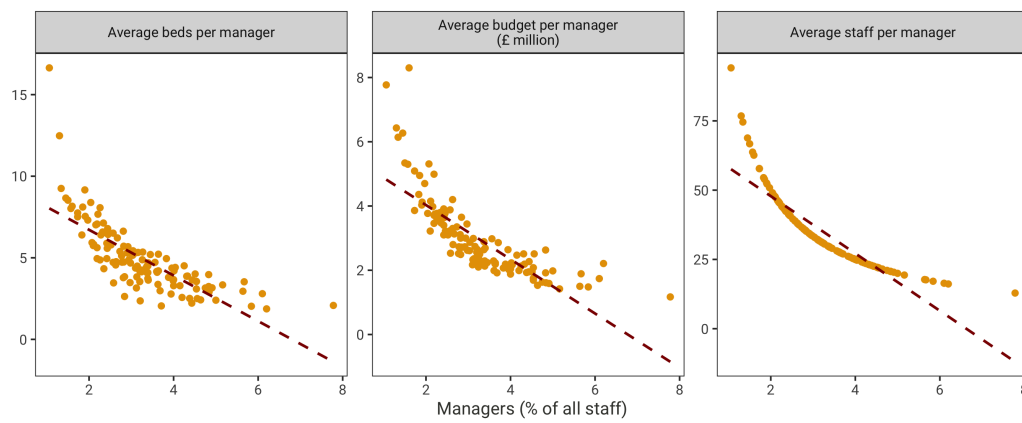


Figure 10: Relationship between management input (%) and resources to be managed across 129 acute NHS hospital trusts in 2017/18



Figure 11: Relationship between management input (%) and resources to be managed across 129 acute NHS hospital trusts in 2018/19



3 Examining between and within variation in data

3.1 Comparison of variation in management measures, controls and outcomes between hospitals versus within hospitals over time

Table 4: Overall, between and within variation in management, control and outcome variables 2012/13 – 2018/19

Variable		Mean	Std. Dev.	Min	Max	Observations
Number of managers (M_1)	overall	113.80	73.44	4	492.85	N = 928
	between		71.48	7.29	407.60	n = 134
	within		21.35	-33.27	234.99	T-bar = 6.93
Quality of management (M_2)	overall	62.68	3.21	48.80	71	N = 927
	between		2.08	55.27	67.59	n = 134
	within		2.44	53.23	68.63	T-bar = 6.92
Number of managers (M_3)	overall	167.08	98.47	9.80	563.3	N = 395
	between		100.72	10.27	562.2	n = 134
	within		15.76	102.91	289.21	T-bar = 2.95
Spend on managers in £ million (M_4)	overall	9.93	5.64	1.01	35.62	N = 395
	between		5.75	1.11	32.45	n = 134
	within		0.92	6.02	16.92	T-bar = 2.95
Number of staff (FTE)	overall	9397.27	5939.77	1424	35251.25	N = 923
	between		4604.45	2659.53	25306.28	n = 134
	within		3821.12	-3648.72	19342.24	T-bar = 6.89
Number of beds	overall	776.98	344.79	224	2658	N = 926
	between		335.46	248.71	1894.14	n = 134
	within		86.66	313.13	2163.84	T-bar = 6.91
Total budget (£ million)	overall	427.46	261.87	93.53	1621.49	N = 927
	between		255.36	106.46	1473.48	n = 134
	within		64.27	37.98	1196.07	T-bar = 6.92
Net financial position (£ million)	overall	-8.44	22.74	-180.07	80.51	N = 927
	between		16.60	-73.56	33.36	n = 134
	within		15.74	-120.87	65.53	T-bar = 6.92
Elective waiting time target met (%)	overall	91.15	4.91	66.20	99.70	N = 896
	between		2.79	83.69	96.40	n = 134
	within		4.05	71.15	105.08	T-bar = 6.69
A&E waiting time target met (%)	overall	88.19	7.19	52	100	N = 823
	between		4.68	71	97.86	n = 119
	within		5.54	56.62	108.19	T-bar = 6.92
Total inpatient admissions	overall	130909	58086	36094	332520	N = 899
	between		56190	38731	300846	n = 134
	within		15352	37776	247145	T-bar = 6.71
Summary Hospital-level Mortality Indicator	overall	1.00	0.10	0.54	1.23	N = 922
	between		0.09	0.68	1.160	n = 134
	within		0.04	0.77	1.19	T-bar = 6.88

3.2 Exploring the between and within variation in the relationship between management and outcomes

Figure 12: Between variation across 129 acute NHS hospital trusts

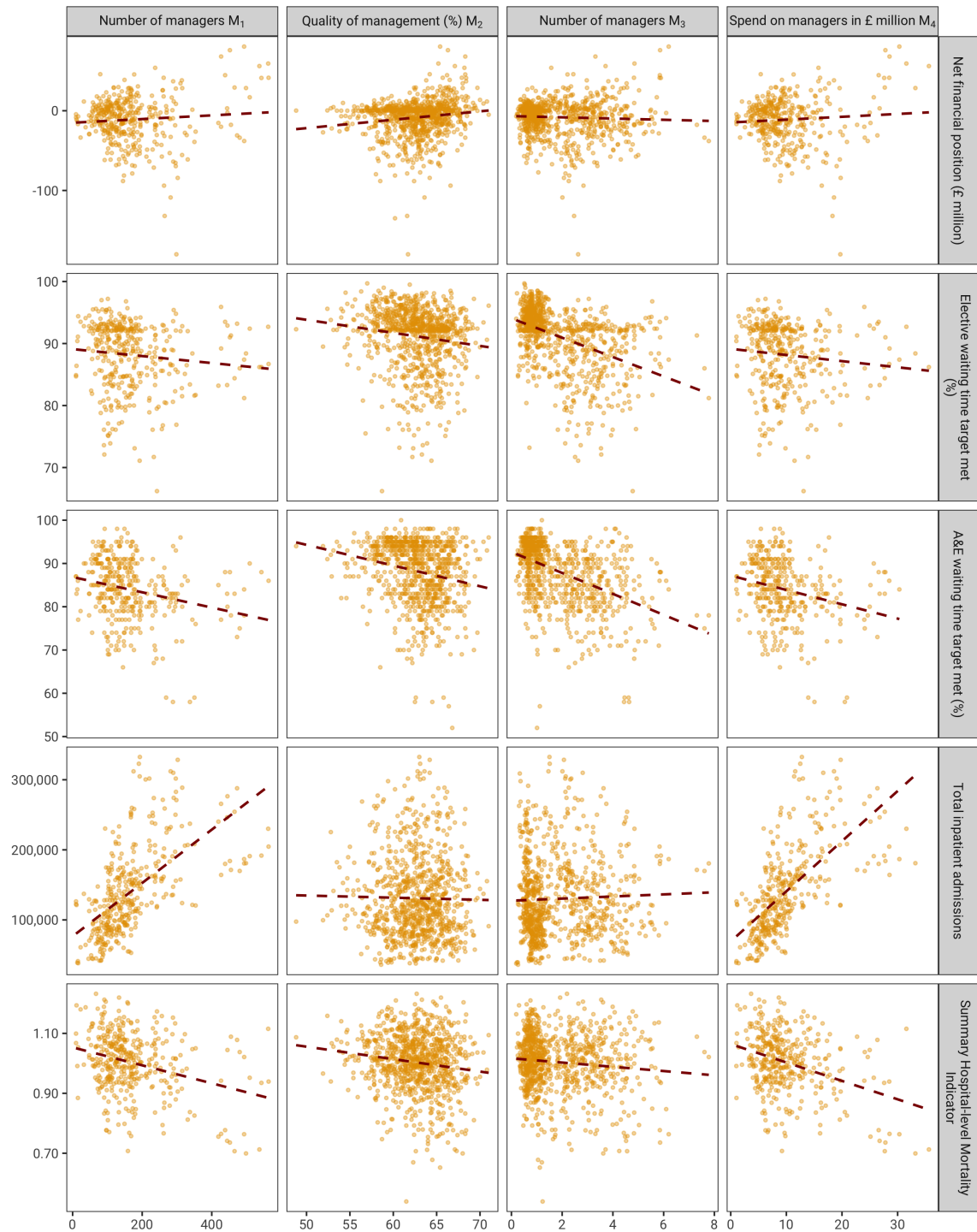
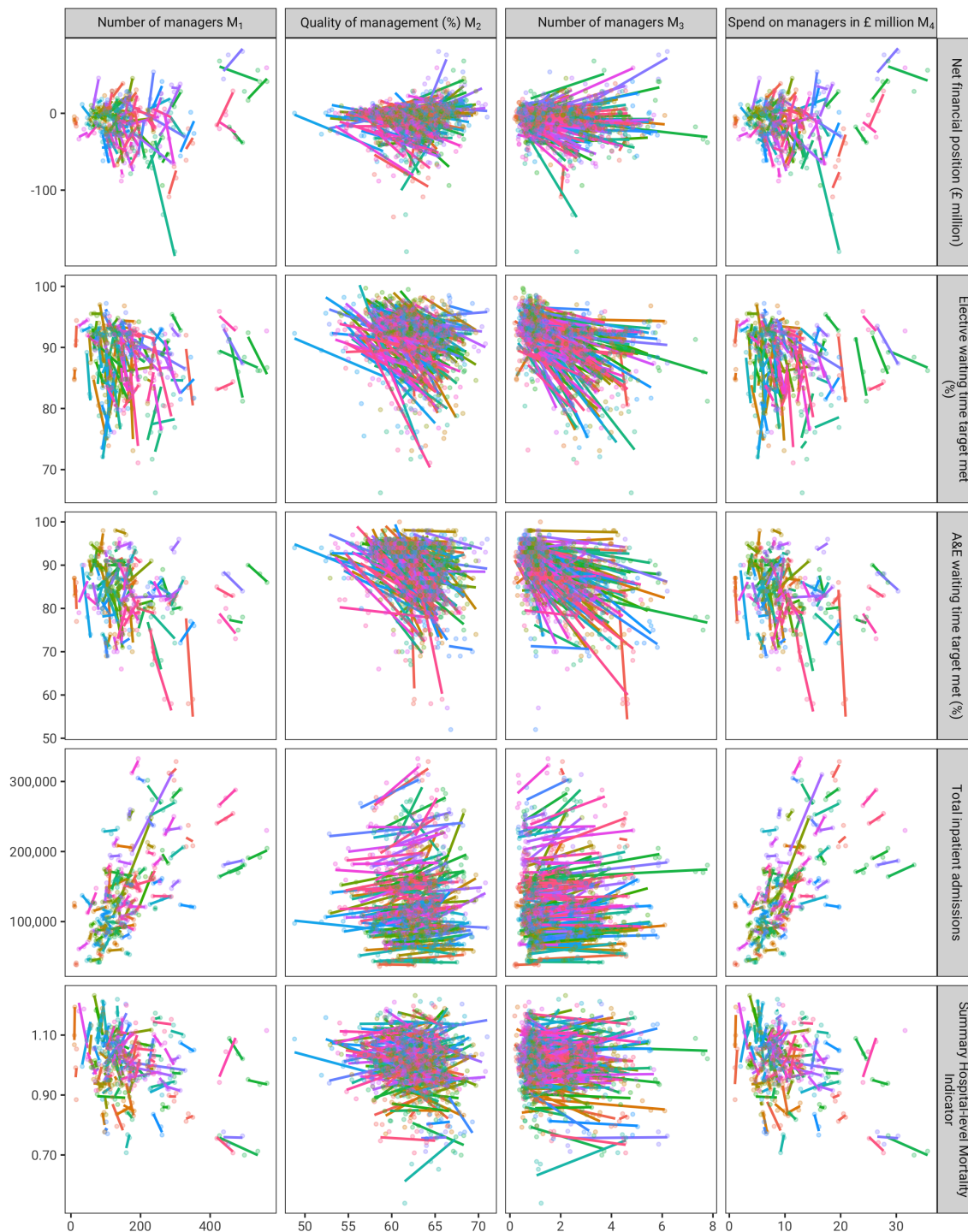


Figure 13: Within variation across 129 acute NHS hospital trusts



4 Alternative specifications of mediation regressions

4.1 Number of managers (M_1)

Table 5: Amount of managerial input and quality of management (M_2) 2012/13 – 2018/19

	Quality of management (M_2)									
	Pooled (1)	Pooled (2)	Between (3)	Between (4)	Within (5)	Within (6)	RE (7)	RE (8)	Lagged DV (9)	Lagged DV (10)
Number of managers (M_1)	0.003 (0.002)	0.006** (0.003)	0.003 (0.003)	0.006* (0.004)	-0.005 (0.004)	-0.002 (0.006)	-0.0005 (0.002)	0.002 (0.004)	0.001 (0.001)	0.002* (0.001)
Size and casemix controls	FALSE	TRUE	FALSE	TRUE	FALSE	TRUE	FALSE	TRUE	FALSE	TRUE
Observations	927	893	134	134	927	893	927	893	792	760
R ²	0.356	0.432	0.013	0.216	0.004	0.044	0.586	0.651	0.702	0.698

Note:

*p<0.1; **p<0.05; ***p<0.01

Control for number of beds, total budget, number of staff and proportion of admissions by age-sex group

Breusch-Pagan Test - RE vs pooled without controls

p = 0 therefore: RE is preferred to Pooled

Hausman Test - FE vs RE without controls

p = 0.02582 therefore: FE is preferred to RE

Breusch-Pagan Test - RE vs pooled with controls

p = 0 therefore: RE is preferred to Pooled

Hausman Test - FE vs RE with controls

p = 0.08585 therefore: **RE is preferred to FE**

4.2 Number of managers (M_3)

Table 6: Amount of managerial input and quality of management (M_2) 2016/17 – 2018/19

	Quality of management (M_2)									
	Pooled	Pooled	Between	Between	Within	Within	RE	RE	Lagged DV	Lagged DV
	(1)	(2)	(3)	(4)	(5)	(6)	(7)	(8)	(9)	(10)
Number of managers (M_3)	0.003 (0.002)	0.005* (0.003)	0.003 (0.002)	0.005* (0.003)	-0.002 (0.004)	0.006 (0.005)	0.002 (0.002)	0.004 (0.002)	0.001 (0.001)	-0.0001 (0.001)
Size and casemix controls	FALSE	TRUE	FALSE	TRUE	FALSE	TRUE	FALSE	TRUE	FALSE	TRUE
Observations	395	382	134	134	395	382	395	382	394	381
R ²	0.014	0.141	0.015	0.177	0.001	0.107	0.401	0.552	0.630	0.635

Note:

*p<0.1; **p<0.05; ***p<0.01

Control for number of beds, total budget, number of staff and proportion of admissions by age-sex group

Breusch-Pagan Test - RE vs pooled without controls

p = 0 therefore: RE is preferred to Pooled

Hausman Test - FE vs RE without controls

p = 0 therefore: FE is preferred to RE

Breusch-Pagan Test - RE vs pooled with controls

p = 0 therefore: RE is preferred to Pooled

Hausman Test - FE vs RE with controls

p = 0 therefore: **FE is preferred to RE**

4.3 Spend on managers in £ million (M_4)

Table 7: Amount of managerial input and quality of management (M_2) 2016/17 – 2018/19

	Quality of management (M_2)									
	Pooled	Pooled	Between	Between	Within	Within	RE	RE	Lagged DV	Lagged DV
	(1)	(2)	(3)	(4)	(5)	(6)	(7)	(8)	(9)	(10)
Spend on managers in £ million (M_4)	0.046 (0.032)	0.102** (0.052)	0.047 (0.033)	0.097* (0.054)	-0.066 (0.071)	0.045 (0.087)	0.026 (0.030)	0.062 (0.046)	0.012 (0.012)	0.0002 (0.021)
Size and casemix controls	FALSE	TRUE	FALSE	TRUE	FALSE	TRUE	FALSE	TRUE	FALSE	TRUE
Observations	395	382	134	134	395	382	395	382	394	381
R ²	0.014	0.143	0.015	0.180	0.003	0.104	0.398	0.554	0.630	0.635

Note:

*p<0.1; **p<0.05; ***p<0.01

Control for number of beds, total budget, number of staff and proportion of admissions by age-sex group

Breusch-Pagan Test - RE vs pooled without controls

p = 0 therefore: RE is preferred to Pooled

Hausman Test - FE vs RE without controls

p = 0 therefore: FE is preferred to RE

Breusch-Pagan Test - RE vs pooled with controls

p = 0 therefore: RE is preferred to Pooled

Hausman Test - FE vs RE with controls

p = 0 therefore: **FE is preferred to RE**

5 Mediation of effect of management quantity on outcomes through NHS staff survey management score

5.1 Number of managers (M_1)

Table 8: Managerial quality and Number of managers (M_1) 2012/13 – 2018/19

	Quality of management (M_2)											
	overall	7a	7b	7c	7d	7e	7f	7g	8a	8b	8c	8d
	(1)	(2)	(3)	(4)	(5)	(6)	(7)	(8)	(9)	(10)	(11)	(12)
Number of managers (M_1)	-0.002 (0.006)	-0.002 (0.005)	-0.001 (0.005)	-0.001 (0.005)	0.001 (0.006)	-0.002 (0.004)	0.0002 (0.005)	0.003 (0.004)	0.0003 (0.006)	-0.003 (0.008)	-0.001 (0.008)	-0.004 (0.008)
Observations	893	893	893	893	893	893	513	513	893	893	893	893
R ²	0.044	0.028	0.034	0.028	0.022	0.021	0.044	0.032	0.047	0.042	0.043	0.044

Note: Control for hospital fixed effects, number of beds, total budget, number of staff and proportion of admissions by age-sex group *p<0.1; **p<0.05; ***p<0.01

5.2 Number of managers (M_3)

Table 9: Managerial quality and Number of managers (M_3) 2016/17 – 2018/19

	Quality of management (M_2)											
	overall	7a	7b	7c	7d	7e	7f	7g	8a	8b	8c	8d
	(1)	(2)	(3)	(4)	(5)	(6)	(7)	(8)	(9)	(10)	(11)	(12)
Number of managers (M_3)	0.006 (0.005)	0.006 (0.006)	0.003 (0.006)	0.011* (0.006)	0.005 (0.005)	0.004 (0.005)	-0.004 (0.006)	0.003 (0.006)	0.013* (0.007)	0.008 (0.009)	0.010 (0.009)	0.008 (0.010)
Observations	382	382	382	382	382	382	382	382	382	382	382	382
R ²	0.107	0.073	0.088	0.118	0.102	0.104	0.081	0.080	0.096	0.078	0.070	0.091

Note: Control for hospital fixed effects, number of beds, total budget, number of staff and proportion of admissions by age-sex group *p<0.1; **p<0.05; ***p<0.01

5.3 Spend on managers in £ million (M_4)

Table 10: Managerial quality and Spend on managers in £ million (M_4) 2016/17 – 2018/19

	Quality of management (M_2)											
	overall	7a	7b	7c	7d	7e	7f	7g	8a	8b	8c	8d
	(1)	(2)	(3)	(4)	(5)	(6)	(7)	(8)	(9)	(10)	(11)	(12)
Spend on managers in £ million (M_4)	0.045 (0.087)	0.061 (0.103)	-0.008 (0.093)	0.109 (0.109)	0.052 (0.083)	0.001 (0.083)	-0.118 (0.117)	-0.028 (0.094)	0.190 (0.116)	0.046 (0.160)	0.087 (0.149)	0.082 (0.152)
Observations	382	382	382	382	382	382	382	382	382	382	382	382
R ²	0.104	0.071	0.087	0.111	0.100	0.102	0.083	0.079	0.093	0.076	0.068	0.090

Note: Control for hospital fixed effects, number of beds, total budget, number of staff and proportion of admissions by age-sex group *p<0.1; **p<0.05; ***p<0.01

6 Alternative specifications of management regressions

6.1 Net financial position (£ million)

6.1.1 Number of managers (M_1)

Table 11: Amount of managerial input and Net financial position (£ million) 2012/13 – 2018/19

	Net financial position (£ million)									
	Pooled	Pooled	Between	Between	Within	Within	RE	RE	Lagged DV	Lagged DV
	(1)	(2)	(3)	(4)	(5)	(6)	(7)	(8)	(9)	(10)
Number of managers (M_1)	0.020 (0.027)	0.053* (0.030)	0.021 (0.020)	0.046* (0.026)	-0.007 (0.057)	-0.011 (0.047)	0.012 (0.026)	0.032 (0.033)	0.004 (0.010)	0.017 (0.015)
Size and casemix controls	FALSE	TRUE	FALSE	TRUE	FALSE	TRUE	FALSE	TRUE	FALSE	TRUE
Observations	927	893	134	134	927	893	927	893	792	760
R ²	0.086	0.166	0.008	0.360	0.0001	0.032	0.145	0.173	0.614	0.616

Note:

*p<0.1; **p<0.05; ***p<0.01

Control for number of beds, total budget, number of staff and proportion of admissions by age-sex group

Breusch-Pagan Test - RE vs pooled without controls

p = 0 therefore: RE is preferred to Pooled

Hausman Test - FE vs RE without controls

p = 0.39186 therefore: RE is preferred to FE

Breusch-Pagan Test - RE vs pooled with controls

p = 0 therefore: RE is preferred to Pooled

Hausman Test - FE vs RE with controls

p = 0.0053 therefore: **FE is preferred to RE**

6.1.2 Quality of management (M_2)

Table 12: Amount of managerial input and Net financial position (£ million) 2012/13 – 2018/19

	Net financial position (£ million)									
	Pooled	Pooled	Between	Between	Within	Within	RE	RE	Lagged DV	Lagged DV
	(1)	(2)	(3)	(4)	(5)	(6)	(7)	(8)	(9)	(10)
Quality of management (M_2)	3.121*** (0.364)	2.844*** (0.360)	4.268*** (0.585)	3.751*** (0.565)	0.835 (0.561)	0.433 (0.441)	1.593*** (0.433)	1.209*** (0.409)	1.255*** (0.214)	1.161*** (0.214)
Size and casemix controls	FALSE	TRUE	FALSE	TRUE	FALSE	TRUE	FALSE	TRUE	FALSE	TRUE
Observations	927	893	134	134	927	893	927	893	792	760
R ²	0.208	0.251	0.287	0.519	0.008	0.034	0.169	0.186	0.629	0.627

Note:

*p<0.1; **p<0.05; ***p<0.01

Control for number of beds, total budget, number of staff and proportion of admissions by age-sex group

Breusch-Pagan Test - RE vs pooled without controls

p = 0 therefore: RE is preferred to Pooled

Hausman Test - FE vs RE without controls

p = 0 therefore: FE is preferred to RE

Breusch-Pagan Test - RE vs pooled with controls

p = 0 therefore: RE is preferred to Pooled

Hausman Test - FE vs RE with controls

p = 3e-05 therefore: **FE is preferred to RE**

6.1.3 Number of managers (M_3)

Table 13: Amount of managerial input and Net financial position (£ million) 2016/17 – 2018/19

	Net financial position (£ million)									
	Pooled	Pooled	Between	Between	Within	Within	RE	RE	Lagged DV	Lagged DV
	(1)	(2)	(3)	(4)	(5)	(6)	(7)	(8)	(9)	(10)
Number of managers (M_3)	0.024 (0.032)	0.062* (0.037)	0.037 (0.023)	0.066** (0.033)	-0.054 (0.088)	0.124 (0.120)	0.020 (0.034)	0.076* (0.042)	0.023* (0.013)	0.023 (0.018)
Size and casemix controls	FALSE	TRUE	FALSE	TRUE	FALSE	TRUE	FALSE	TRUE	FALSE	TRUE
Observations	395	382	134	134	395	382	395	382	394	381
R ²	0.012	0.166	0.020	0.207	0.004	0.062	0.018	0.073	0.645	0.659

Note:

*p<0.1; **p<0.05; ***p<0.01

Control for number of beds, total budget, number of staff and proportion of admissions by age-sex group

Breusch-Pagan Test - RE vs pooled without controls

p = 0 therefore: RE is preferred to Pooled

Hausman Test - FE vs RE without controls

p = 0.11259 therefore: RE is preferred to FE

Breusch-Pagan Test - RE vs pooled with controls

p = 0 therefore: RE is preferred to Pooled

Hausman Test - FE vs RE with controls

p = 0.37903 therefore: **RE is preferred to FE**

6.1.4 Spend on managers in £ million (M_4)

Table 14: Amount of managerial input and Net financial position (£ million) 2016/17 – 2018/19

	Net financial position (£ million)									
	Pooled	Pooled	Between	Between	Within	Within	RE	RE	Lagged DV	Lagged DV
	(1)	(2)	(3)	(4)	(5)	(6)	(7)	(8)	(9)	(10)
Spend on managers in £ million (M_4)	0.376 (0.608)	1.261* (0.753)	0.599 (0.400)	1.359** (0.638)	-0.916 (1.564)	2.022 (2.345)	0.312 (0.634)	1.474* (0.866)	0.413* (0.240)	0.433 (0.361)
Size and casemix controls	FALSE	TRUE	FALSE	TRUE	FALSE	TRUE	FALSE	TRUE	FALSE	TRUE
Observations	395	382	134	134	395	382	395	382	394	381
R ²	0.011	0.167	0.017	0.210	0.004	0.062	0.017	0.073	0.645	0.659

Note:

*p<0.1; **p<0.05; ***p<0.01

Control for number of beds, total budget, number of staff and proportion of admissions by age-sex group

Breusch-Pagan Test - RE vs pooled without controls

p = 0 therefore: RE is preferred to Pooled

Hausman Test - FE vs RE without controls

p = 0.11944 therefore: RE is preferred to FE

Breusch-Pagan Test - RE vs pooled with controls

p = 0 therefore: RE is preferred to Pooled

Hausman Test - FE vs RE with controls

p = 0.32934 therefore: RE is preferred to FE

6.2 Elective waiting time target met (%)

6.2.1 Number of managers (M_1)

Table 15: Amount of managerial input and Elective waiting time target met (%) 2012/13 – 2018/19

	Elective waiting time target met (%)									
	Pooled	Pooled	Between	Between	Within	Within	RE	RE	Lagged DV	Lagged DV
	(1)	(2)	(3)	(4)	(5)	(6)	(7)	(8)	(9)	(10)
Number of managers (M_1)	-0.005 (0.003)	0.002 (0.005)	-0.006* (0.003)	0.00000 (0.005)	0.006 (0.006)	0.011 (0.007)	-0.003 (0.004)	0.004 (0.005)	-0.001 (0.002)	0.002 (0.002)
Size and casemix controls	FALSE	TRUE	FALSE	TRUE	FALSE	TRUE	FALSE	TRUE	FALSE	TRUE
Observations	896	865	134	134	896	865	896	865	744	715
R ²	0.361	0.402	0.022	0.280	0.002	0.021	0.543	0.598	0.635	0.642

Note:

*p<0.1; **p<0.05; ***p<0.01

Control for number of beds, total budget, number of staff and proportion of admissions by age-sex group

Breusch-Pagan Test - RE vs pooled without controls

p = 0 therefore: RE is preferred to Pooled

Hausman Test - FE vs RE without controls

p = 0 therefore: FE is preferred to RE

Breusch-Pagan Test - RE vs pooled with controls

p = 0 therefore: RE is preferred to Pooled

Hausman Test - FE vs RE with controls

p = 0 therefore: **FE is preferred to RE**

6.2.2 Quality of management (M_2)

Table 16: Amount of managerial input and Elective waiting time target met (%) 2012/13 – 2018/19

	Elective waiting time target met (%)									
	Pooled	Pooled	Between	Between	Within	Within	RE	RE	Lagged DV	Lagged DV
	(1)	(2)	(3)	(4)	(5)	(6)	(7)	(8)	(9)	(10)
Quality of management (M_2)	0.405*** (0.071)	0.352*** (0.073)	0.592*** (0.104)	0.547*** (0.105)	0.024 (0.097)	-0.020 (0.093)	0.180** (0.078)	0.130* (0.076)	0.194*** (0.045)	0.182*** (0.049)
Size and casemix controls	FALSE	TRUE	FALSE	TRUE	FALSE	TRUE	FALSE	TRUE	FALSE	TRUE
Observations	896	865	134	134	896	865	896	865	744	715
R ²	0.400	0.432	0.196	0.411	0.0002	0.018	0.546	0.599	0.644	0.649

Note:

*p<0.1; **p<0.05; ***p<0.01

Control for number of beds, total budget, number of staff and proportion of admissions by age-sex group

Breusch-Pagan Test - RE vs pooled without controls

p = 0 therefore: RE is preferred to Pooled

Hausman Test - FE vs RE without controls

p = 0 therefore: FE is preferred to RE

Breusch-Pagan Test - RE vs pooled with controls

p = 0 therefore: RE is preferred to Pooled

Hausman Test - FE vs RE with controls

p = 0 therefore: **FE is preferred to RE**

6.2.3 Number of managers (M_3)

Table 17: Amount of managerial input and Elective waiting time target met (%) 2016/17 – 2018/19

	Elective waiting time target met (%)									
	Pooled	Pooled	Between	Between	Within	Within	RE	RE	Lagged DV	Lagged DV
	(1)	(2)	(3)	(4)	(5)	(6)	(7)	(8)	(9)	(10)
Number of managers (M_3)	-0.005 (0.004)	-0.003 (0.005)	-0.004 (0.004)	-0.003 (0.006)	0.003 (0.011)	0.013 (0.017)	-0.003 (0.003)	-0.003 (0.005)	-0.003* (0.001)	-0.004 (0.003)
Size and casemix controls	FALSE	TRUE	FALSE	TRUE	FALSE	TRUE	FALSE	TRUE	FALSE	TRUE
Observations	384	371	134	134	384	371	384	371	373	360
R ²	0.107	0.234	0.007	0.180	0.0004	0.067	0.515	0.596	0.613	0.635

Note:

*p<0.1; **p<0.05; ***p<0.01

Control for number of beds, total budget, number of staff and proportion of admissions by age-sex group

Breusch-Pagan Test - RE vs pooled without controls

p = 0 therefore: RE is preferred to Pooled

Hausman Test - FE vs RE without controls

p = 0.34332 therefore: RE is preferred to FE

Breusch-Pagan Test - RE vs pooled with controls

p = 0 therefore: RE is preferred to Pooled

Hausman Test - FE vs RE with controls

p = 0.00416 therefore: **FE is preferred to RE**

6.2.4 Spend on managers in £ million (M_4)

Table 18: Amount of managerial input and Elective waiting time target met (%) 2016/17 – 2018/19

	Elective waiting time target met (%)										
	Pooled	Pooled	Between	Between	Within	Within	RE	RE	Lagged DV	Lagged DV	
	(1)	(2)	(3)	(4)	(5)	(6)	(7)	(8)	(9)	(10)	
Spend on managers in £ million (M_4)	-0.079 (0.063)	-0.077 (0.112)	-0.068 (0.069)	-0.064 (0.112)	0.098 (0.188)	0.317 (0.275)	-0.051 (0.055)	-0.043 (0.106)	-0.042*	(0.025)	-0.083 (0.051)
Size and casemix controls	FALSE	TRUE	FALSE	TRUE	FALSE	TRUE	FALSE	TRUE	FALSE	TRUE	
Observations	384	371	134	134	384	371	384	371	373	360	
R ²	0.107	0.234	0.007	0.181	0.001	0.069	0.515	0.595	0.612	0.635	

Note:

*p<0.1; **p<0.05; ***p<0.01

Control for number of beds, total budget, number of staff and proportion of admissions by age-sex group

Breusch-Pagan Test - RE vs pooled without controls

p = 0 therefore: RE is preferred to Pooled

Hausman Test - FE vs RE without controls

p = 0.34516 therefore: RE is preferred to FE

Breusch-Pagan Test - RE vs pooled with controls

p = 0 therefore: RE is preferred to Pooled

Hausman Test - FE vs RE with controls

p = 0.00483 therefore: **FE is preferred to RE**

6.3 A&E waiting time target met (%)

6.3.1 Number of managers (M_1)

Table 19: Amount of managerial input and A&E waiting time target met (%) 2012/13 – 2018/19

	A&E waiting time target met (%)									
	Pooled	Pooled	Between	Between	Within	Within	RE	RE	Lagged DV	Lagged DV
	(1)	(2)	(3)	(4)	(5)	(6)	(7)	(8)	(9)	(10)
Number of managers (M_1)	-0.010*	-0.006	-0.012*	-0.006	-0.013	-0.016	-0.012**	-0.010	-0.004	-0.002
	(0.005)	(0.006)	(0.006)	(0.010)	(0.010)	(0.010)	(0.005)	(0.007)	(0.002)	(0.003)
Size and casemix controls	FALSE	TRUE	FALSE	TRUE	FALSE	TRUE	FALSE	TRUE	FALSE	TRUE
Observations	823	817	119	119	823	817	823	817	701	697
R ²	0.323	0.363	0.029	0.225	0.004	0.034	0.485	0.499	0.646	0.654

Note:

*p<0.1; **p<0.05; ***p<0.01

Control for number of beds, total budget, number of staff and proportion of admissions by age-sex group

Breusch-Pagan Test - RE vs pooled without controls

p = 0 therefore: RE is preferred to Pooled

Hausman Test - FE vs RE without controls

p = 0.84398 therefore: RE is preferred to FE

Breusch-Pagan Test - RE vs pooled with controls

p = 0 therefore: RE is preferred to Pooled

Hausman Test - FE vs RE with controls

p = 0 therefore: **FE is preferred to RE**

6.3.2 Quality of management (M_2)

Table 20: Amount of managerial input and A&E waiting time target met (%) 2012/13 – 2018/19

	A&E waiting time target met (%)									
	Pooled	Pooled	Between	Between	Within	Within	RE	RE	Lagged DV	Lagged DV
	(1)	(2)	(3)	(4)	(5)	(6)	(7)	(8)	(9)	(10)
Quality of management (M_2)	0.376** (0.166)	0.456*** (0.118)	0.500** (0.208)	0.771*** (0.214)	0.110 (0.102)	0.122 (0.107)	0.187** (0.093)	0.189** (0.087)	0.101 (0.074)	0.144** (0.067)
Size and casemix controls	FALSE	TRUE	FALSE	TRUE	FALSE	TRUE	FALSE	TRUE	FALSE	TRUE
Observations	823	817	119	119	823	817	823	817	701	697
R ²	0.330	0.385	0.047	0.307	0.002	0.033	0.485	0.500	0.646	0.656

Note:

*p<0.1; **p<0.05; ***p<0.01

Control for number of beds, total budget, number of staff and proportion of admissions by age-sex group

Breusch-Pagan Test - RE vs pooled without controls

p = 0 therefore: RE is preferred to Pooled

Hausman Test - FE vs RE without controls

p = 0.05094 therefore: RE is preferred to FE

Breusch-Pagan Test - RE vs pooled with controls

p = 0 therefore: RE is preferred to Pooled

Hausman Test - FE vs RE with controls

p = 0 therefore: **FE is preferred to RE**

6.3.3 Number of managers (M_3)

Table 21: Amount of managerial input and A&E waiting time target met (%) 2016/17 – 2018/19

	A&E waiting time target met (%)									
	Pooled	Pooled	Between	Between	Within	Within	RE	RE	Lagged DV	Lagged DV
	(1)	(2)	(3)	(4)	(5)	(6)	(7)	(8)	(9)	(10)
Number of managers (M_3)	-0.017*** (0.007)	-0.017* (0.009)	-0.018*** (0.006)	-0.019** (0.009)	0.004 (0.018)	-0.023 (0.024)	-0.014** (0.006)	-0.015 (0.009)	-0.004 (0.003)	-0.004 (0.003)
Size and casemix controls	FALSE	TRUE	FALSE	TRUE	FALSE	TRUE	FALSE	TRUE	FALSE	TRUE
Observations	353	353	119	119	353	353	353	353	352	352
R ²	0.062	0.128	0.066	0.150	0.0003	0.054	0.147	0.186	0.678	0.690

Note:

*p<0.1; **p<0.05; ***p<0.01

Control for number of beds, total budget, number of staff and proportion of admissions by age-sex group

Breusch-Pagan Test - RE vs pooled without controls

p = 0 therefore: RE is preferred to Pooled

Hausman Test - FE vs RE without controls

p = 0 therefore: FE is preferred to RE

Breusch-Pagan Test - RE vs pooled with controls

p = 0 therefore: RE is preferred to Pooled

Hausman Test - FE vs RE with controls

p = 0.00767 therefore: **FE is preferred to RE**

6.3.4 Spend on managers in £ million (M_4)

Table 22: Amount of managerial input and A&E waiting time target met (%) 2016/17 – 2018/19

	A&E waiting time target met (%)									
	Pooled	Pooled	Between	Between	Within	Within	RE	RE	Lagged DV	Lagged DV
	(1)	(2)	(3)	(4)	(5)	(6)	(7)	(8)	(9)	(10)
Spend on managers in £ million (M_4)	-0.323*** (0.113)	-0.359** (0.181)	-0.334*** (0.111)	-0.399** (0.181)	-0.042 (0.322)	-0.604 (0.417)	-0.286** (0.112)	-0.352* (0.180)	-0.077 (0.050)	-0.093 (0.071)
Size and casemix controls	FALSE	TRUE	FALSE	TRUE	FALSE	TRUE	FALSE	TRUE	FALSE	TRUE
Observations	353	353	119	119	353	353	353	353	352	352
R ²	0.068	0.132	0.072	0.155	0.0001	0.062	0.152	0.188	0.679	0.691

Note:

*p<0.1; **p<0.05; ***p<0.01

Control for number of beds, total budget, number of staff and proportion of admissions by age-sex group

34

Breusch-Pagan Test - RE vs pooled without controls

p = 0 therefore: RE is preferred to Pooled

Hausman Test - FE vs RE without controls

p = 0 therefore: FE is preferred to RE

Breusch-Pagan Test - RE vs pooled with controls

p = 0 therefore: RE is preferred to Pooled

Hausman Test - FE vs RE with controls

p = 0.00321 therefore: **FE is preferred to RE**

6.4 Total inpatient admissions

6.4.1 Number of managers (M_1)

Table 23: Amount of managerial input and Total inpatient admissions 2012/13 – 2018/19

	Total inpatient admissions									
	Pooled	Pooled	Between	Between	Within	Within	RE	RE	Lagged DV	Lagged DV
	(1)	(2)	(3)	(4)	(5)	(6)	(7)	(8)	(9)	(10)
Number of managers (M_1)	465.793*** (64.305)	7.290 (40.084)	467.450*** (55.357)	9.781 (33.194)	205.396*** (64.956)	16.981 (30.135)	243.579*** (57.095)	12.405 (27.222)	21.840*** (7.151)	4.719 (8.338)
Size and casemix controls	FALSE	TRUE	FALSE	TRUE	FALSE	TRUE	FALSE	TRUE	FALSE	TRUE
Observations	899	893	134	134	899	893	899	893	749	745
R ²	0.351	0.885	0.351	0.913	0.084	0.606	0.371	0.745	0.965	0.968

Note:

*p<0.1; **p<0.05; ***p<0.01

Control for number of beds, total budget, number of staff and proportion of admissions by age-sex group

Breusch-Pagan Test - RE vs pooled without controls

p = 0 therefore: RE is preferred to Pooled

Hausman Test - FE vs RE without controls

p = 6e-05 therefore: FE is preferred to RE

Breusch-Pagan Test - RE vs pooled with controls

p = 0 therefore: RE is preferred to Pooled

Hausman Test - FE vs RE with controls

p = 0 therefore: **FE is preferred to RE**

6.4.2 Quality of management (M_2)

Table 24: Amount of managerial input and Total inpatient admissions 2012/13 – 2018/19

	Total inpatient admissions									
	Pooled (1)	Pooled (2)	Between (3)	Between (4)	Within (5)	Within (6)	RE (7)	RE (8)	Lagged DV (9)	Lagged DV (10)
Quality of management (M_2)	-2,930.598** (1,388.259)	-466.941 (433.209)	-3,897.992* (2,318.771)	-540.942 (816.263)	-1,167.568** (533.118)	-80.677 (224.766)	-1,214.839** (524.251)	-182.481 (217.796)	148.641 (181.704)	-75.529 (178.410)
Size and casemix controls	FALSE	TRUE	FALSE	TRUE	FALSE	TRUE	FALSE	TRUE	FALSE	TRUE
Observations	899	893	134	134	899	893	899	893	749	745
R ²	0.040	0.885	0.021	0.913	0.020	0.605	0.308	0.746	0.964	0.968

Note:

*p<0.1; **p<0.05; ***p<0.01

Control for number of beds, total budget, number of staff and proportion of admissions by age-sex group

36

Breusch-Pagan Test - RE vs pooled without controls

p = 0 therefore: RE is preferred to Pooled

Hausman Test - FE vs RE without controls

p = 0.21314 therefore: RE is preferred to FE

Breusch-Pagan Test - RE vs pooled with controls

p = 0 therefore: RE is preferred to Pooled

Hausman Test - FE vs RE with controls

p = 0 therefore: **FE is preferred to RE**

6.4.3 Number of managers (M_3)

Table 25: Amount of managerial input and Total inpatient admissions 2016/17 – 2018/19

	Total inpatient admissions									
	Pooled	Pooled	Between	Between	Within	Within	RE	RE	Lagged DV	Lagged DV
	(1)	(2)	(3)	(4)	(5)	(6)	(7)	(8)	(9)	(10)
Number of managers (M_3)	379.882*** (52.668)	-7.277 (29.271)	360.834*** (42.826)	-12.737 (25.185)	299.485** (148.081)	-46.927 (40.476)	329.424*** (79.560)	-37.985 (32.397)	17.716** (7.058)	12.758* (7.440)
Size and casemix controls	FALSE	TRUE	FALSE	TRUE	FALSE	TRUE	FALSE	TRUE	FALSE	TRUE
Observations	382	382	134	134	382	382	382	382	381	381
R ²	0.358	0.897	0.350	0.910	0.177	0.656	0.345	0.722	0.972	0.974

Note:

*p<0.1; **p<0.05; ***p<0.01

Control for number of beds, total budget, number of staff and proportion of admissions by age-sex group

Breusch-Pagan Test - RE vs pooled without controls

p = 0 therefore: RE is preferred to Pooled

Hausman Test - FE vs RE without controls

p = 0.45683 therefore: RE is preferred to FE

Breusch-Pagan Test - RE vs pooled with controls

p = 0 therefore: RE is preferred to Pooled

Hausman Test - FE vs RE with controls

p = 0 therefore: **FE is preferred to RE**

6.4.4 Spend on managers in £ million (M_4)

Table 26: Amount of managerial input and Total inpatient admissions 2016/17 – 2018/19

	Total inpatient admissions									
	Pooled	Pooled	Between	Between	Within	Within	RE	RE	Lagged DV	Lagged DV
	(1)	(2)	(3)	(4)	(5)	(6)	(7)	(8)	(9)	(10)
Spend on managers in £ million (M_4)	7,146.755*** (934.153)	-93.800 (569.005)	6,733.398*** (726.613)	-224.583 (494.799)	5,521.627** (2,536.941)	-453.417 (686.583)	6,112.432*** (1,377.492)	-489.215 (558.165)	364.667*** (139.232)	299.041** (150.472)
Size and casemix controls	FALSE	TRUE	FALSE	TRUE	FALSE	TRUE	FALSE	TRUE	FALSE	TRUE
Observations	382	382	134	134	382	382	382	382	381	381
R ²	0.409	0.897	0.394	0.910	0.202	0.654	0.374	0.721	0.973	0.974

Note:

*p<0.1; **p<0.05; ***p<0.01

Control for number of beds, total budget, number of staff and proportion of admissions by age-sex group

38

Breusch-Pagan Test - RE vs pooled without controls

p = 0 therefore: RE is preferred to Pooled

Hausman Test - FE vs RE without controls

p = 0.60647 therefore: RE is preferred to FE

Breusch-Pagan Test - RE vs pooled with controls

p = 0 therefore: RE is preferred to Pooled

Hausman Test - FE vs RE with controls

p = 0 therefore: **FE is preferred to RE**

6.5 Summary Hospital-level Mortality Indicator

6.5.1 Number of managers (M_1)

Table 27: Amount of managerial input and Summary Hospital-level Mortality Indicator 2012/13 – 2018/19

	Summary Hospital-level Mortality Indicator									
	Pooled	Pooled	Between	Between	Within	Within	RE	RE	Lagged DV	Lagged DV
	(1)	(2)	(3)	(4)	(5)	(6)	(7)	(8)	(9)	(10)
Number of managers (M_1)	-0.0004*** (0.0001)	-0.0001 (0.0001)	-0.0004*** (0.0001)	-0.0001 (0.0001)	-0.00002 (0.0001)	0.00000 (0.0001)	-0.0002 (0.0001)	-0.00003 (0.0001)	-0.0001* (0.00003)	-0.00003 (0.00003)
Size and casemix controls	FALSE	TRUE	FALSE	TRUE	FALSE	TRUE	FALSE	TRUE	FALSE	TRUE
Observations	922	888	134	134	922	888	922	888	787	755
R ²	0.101	0.445	0.132	0.594	0.0001	0.034	0.026	0.137	0.739	0.751

Note:

*p<0.1; **p<0.05; ***p<0.01

Control for number of beds, total budget, number of staff and proportion of admissions by age-sex group

Breusch-Pagan Test - RE vs pooled without controls

p = 0 therefore: RE is preferred to Pooled

Hausman Test - FE vs RE without controls

p = 0.00198 therefore: FE is preferred to RE

Breusch-Pagan Test - RE vs pooled with controls

p = 0 therefore: RE is preferred to Pooled

Hausman Test - FE vs RE with controls

p = 0.00029 therefore: **FE is preferred to RE**

6.5.2 Quality of management (M_2)

Table 28: Amount of managerial input and Summary Hospital-level Mortality Indicator 2012/13 – 2018/19

	Summary Hospital-level Mortality Indicator									
	Pooled	Pooled	Between	Between	Within	Within	RE	RE	Lagged DV	Lagged DV
	(1)	(2)	(3)	(4)	(5)	(6)	(7)	(8)	(9)	(10)
Quality of management (M_2)	-0.006*** (0.002)	-0.001 (0.002)	-0.010*** (0.003)	-0.001 (0.003)	-0.0001 (0.001)	0.0001 (0.001)	-0.001 (0.001)	-0.0003 (0.001)	0.0001 (0.001)	0.001 (0.001)
Size and casemix controls	FALSE	TRUE	FALSE	TRUE	FALSE	TRUE	FALSE	TRUE	FALSE	TRUE
Observations	922	888	134	134	922	888	922	888	787	755
R ²	0.030	0.442	0.058	0.589	0.00002	0.034	0.019	0.136	0.738	0.751

Note:

*p<0.1; **p<0.05; ***p<0.01

Control for number of beds, total budget, number of staff and proportion of admissions by age-sex group

Breusch-Pagan Test - RE vs pooled without controls

p = 0 therefore: RE is preferred to Pooled

Hausman Test - FE vs RE without controls

p = 0.01217 therefore: FE is preferred to RE

Breusch-Pagan Test - RE vs pooled with controls

p = 0 therefore: RE is preferred to Pooled

Hausman Test - FE vs RE with controls

p = 0.00035 therefore: **FE is preferred to RE**

6.5.3 Number of managers (M_3)

Table 29: Amount of managerial input and Summary Hospital-level Mortality Indicator 2016/17 – 2018/19

	Summary Hospital-level Mortality Indicator									
	Pooled	Pooled	Between	Between	Within	Within	RE	RE	Lagged DV	Lagged DV
	(1)	(2)	(3)	(4)	(5)	(6)	(7)	(8)	(9)	(10)
Number of managers (M_3)	-0.0003*** (0.0001)	-0.0001 (0.0001)	-0.0003*** (0.0001)	-0.00004 (0.0001)	-0.0001 (0.0001)	-0.0003 (0.0002)	-0.0002** (0.0001)	-0.0001 (0.0001)	-0.00001 (0.00003)	0.00001 (0.00003)
Size and casemix controls	FALSE	TRUE	FALSE	TRUE	FALSE	TRUE	FALSE	TRUE	FALSE	TRUE
Observations	390	377	134	134	390	377	390	377	389	376
R ²	0.088	0.456	0.077	0.494	0.002	0.040	0.214	0.415	0.781	0.794

Note:

*p<0.1; **p<0.05; ***p<0.01

Control for number of beds, total budget, number of staff and proportion of admissions by age-sex group

41

Breusch-Pagan Test - RE vs pooled without controls

p = 0 therefore: RE is preferred to Pooled

Hausman Test - FE vs RE without controls

p = 0 therefore: FE is preferred to RE

Breusch-Pagan Test - RE vs pooled with controls

p = 0 therefore: RE is preferred to Pooled

Hausman Test - FE vs RE with controls

p = 0.00011 therefore: **FE is preferred to RE**

6.5.4 Spend on managers in £ million (M_4)

Table 30: Amount of managerial input and Summary Hospital-level Mortality Indicator 2016/17 – 2018/19

	Summary Hospital-level Mortality Indicator									
	Pooled	Pooled	Between	Between	Within	Within	RE	RE	Lagged DV	Lagged DV
	(1)	(2)	(3)	(4)	(5)	(6)	(7)	(8)	(9)	(10)
Spend on managers in £ million (M_4)	-0.006*** (0.002)	-0.002 (0.002)	-0.005*** (0.001)	-0.001 (0.002)	-0.002 (0.002)	-0.005 (0.004)	-0.005*** (0.002)	-0.002 (0.002)	-0.0003 (0.0005)	0.0003 (0.001)
Size and casemix controls	FALSE	TRUE	FALSE	TRUE	FALSE	TRUE	FALSE	TRUE	FALSE	TRUE
Observations	390	377	134	134	390	377	390	377	389	376
R ²	0.121	0.456	0.110	0.494	0.002	0.040	0.224	0.419	0.781	0.794

Note:

*p<0.1; **p<0.05; ***p<0.01

Control for number of beds, total budget, number of staff and proportion of admissions by age-sex group

Breusch-Pagan Test - RE vs pooled without controls

p = 0 therefore: RE is preferred to Pooled

Hausman Test - FE vs RE without controls

p = 0 therefore: FE is preferred to RE

Breusch-Pagan Test - RE vs pooled with controls

p = 0 therefore: RE is preferred to Pooled

Hausman Test - FE vs RE with controls

p = 0.00015 therefore: **FE is preferred to RE**

7 Impact of responses to individual questions within the NHS staff survey on outcomes

7.1 Net financial position (£ million)

Table 31: Managerial quality and Net financial position (£ million) 2012/13 – 2018/19

	Net financial position (£ million)											
	overall	7a	7b	7c	7d	7e	7f	7g	8a	8b	8c	8d
	(1)	(2)	(3)	(4)	(5)	(6)	(7)	(8)	(9)	(10)	(11)	(12)
overall	0.433 (0.441)											
7a		0.225 (0.463)										
7b			0.297 (0.393)									
7c				0.272 (0.389)								
7d					0.301 (0.385)							
7e						0.375 (0.473)						
7f							1.114* (0.614)					
7g								1.258 (0.850)				
8a									0.968*** (0.346)			
8b										0.357 (0.260)		
8c											0.431 (0.280)	
8d												0.336 (0.274)
Observations	893	893	893	893	893	893	513	513	893	893	893	893
R ²	0.034	0.032	0.033	0.033	0.033	0.033	0.039	0.040	0.047	0.035	0.037	0.035

Note:

Control for hospital fixed effects, number of beds, total budget, number of staff and proportion of admissions by age-sex group *p<0.1; **p<0.05; ***p<0.01

7.2 Elective waiting time target met (%)

Table 32: Managerial quality and Elective waiting time target met (%) 2012/13 – 2018/19

	Elective waiting time target met (%)											
	overall	7a	7b	7c	7d	7e	7f	7g	8a	8b	8c	8d
	(1)	(2)	(3)	(4)	(5)	(6)	(7)	(8)	(9)	(10)	(11)	(12)
overall	-0.020 (0.093)											
7a		-0.003 (0.087)										
7b			-0.025 (0.079)									
7c				-0.017 (0.080)								
7d					0.055 (0.073)							
7e						-0.005 (0.091)						
7f							0.177 (0.108)					
7g								0.171 (0.129)				
8a									0.0002 (0.085)			
8b										-0.0003 (0.063)		
8c											0.012 (0.065)	
8d												-0.017 (0.064)
Observations	865	865	865	865	865	865	497	497	865	865	865	865
R ²	0.018	0.017	0.018	0.017	0.018	0.017	0.064	0.063	0.017	0.017	0.017	0.018

Note:

Control for hospital fixed effects, number of beds, total budget, number of staff and proportion of admissions by age-sex group *p<0.1; **p<0.05; ***p<0.01

7.3 A&E waiting time target met (%)

Table 33: Managerial quality and A&E waiting time target met (%) 2012/13 – 2018/19

	A&E waiting time target met (%)											
	overall	7a	7b	7c	7d	7e	7f	7g	8a	8b	8c	8d
	(1)	(2)	(3)	(4)	(5)	(6)	(7)	(8)	(9)	(10)	(11)	(12)
overall	0.122 (0.107)											
7a		0.150 (0.111)										
7b			0.185* (0.106)									
7c				0.126 (0.105)								
7d					0.078 (0.093)							
7e						0.103 (0.111)						
7f							0.315* (0.166)					
7g								0.274 (0.176)				
8a									0.008 (0.080)			
8b										0.105 (0.071)		
8c											0.097 (0.077)	
8d												0.099 (0.081)
Observations	817	817	817	817	817	817	469	469	817	817	817	817
R ²	0.033	0.033	0.035	0.033	0.031	0.031	0.041	0.037	0.030	0.034	0.034	0.034

Note:

Control for hospital fixed effects, number of beds, total budget, number of staff and proportion of admissions by age-sex group *p<0.1; **p<0.05; ***p<0.01

7.4 Total inpatient admissions

Table 34: Managerial quality and Total inpatient admissions 2012/13 – 2018/19

	Total inpatient admissions											
	overall	7a	7b	7c	7d	7e	7f	7g	8a	8b	8c	8d
	(1)	(2)	(3)	(4)	(5)	(6)	(7)	(8)	(9)	(10)	(11)	(12)
overall	-80.677 (224.766)											
7a		-24.288 (221.843)										
7b			-55.074 (202.367)									
7c				-21.672 (194.115)								
7d					-91.820 (195.681)							
7e						-160.548 (218.805)						
7f							278.452 (293.980)					
7g								192.878 (346.803)				
8a									-84.524 (187.298)			
8b										-48.983 (148.326)		
8c											-2.974 (152.845)	
8d												6.363 (154.966)
Observations	893	893	893	893	893	893	513	513	893	893	893	893
R ²	0.605	0.605	0.605	0.605	0.605	0.605	0.438	0.437	0.605	0.605	0.605	0.605

Note:

*p<0.1; **p<0.05; ***p<0.01
Control for hospital fixed effects, number of beds, total budget, number of staff and proportion of admissions by age-sex group

7.5 Summary Hospital-level Mortality Indicator

Table 35: Managerial quality and Summary Hospital-level Mortality Indicator 2012/13 – 2018/19

	Summary Hospital-level Mortality Indicator											
	overall	7a	7b	7c	7d	7e	7f	7g	8a	8b	8c	8d
	(1)	(2)	(3)	(4)	(5)	(6)	(7)	(8)	(9)	(10)	(11)	(12)
overall	0.0001 (0.001)											
7a		0.001 (0.001)										
7b			0.001 (0.001)									
7c				0.0004 (0.001)								
7d					0.0004 (0.001)							
7e						0.001 (0.001)						
7f							0.001 (0.002)					
7g								0.001 (0.002)				
8a									0.00003 (0.001)			
8b										-0.001 (0.001)		
8c											-0.001 (0.001)	
8d												-0.0005 (0.001)
Observations	888	888	888	888	888	888	508	508	888	888	888	888
R ²	0.034	0.035	0.035	0.034	0.034	0.035	0.050	0.050	0.034	0.035	0.034	0.034

Note:

Control for hospital fixed effects, number of beds, total budget, number of staff and proportion of admissions by age-sex group *p<0.1; **p<0.05; ***p<0.01