

24 The IOR represents the risk that an imported case initiates an outbreak as opposed to
 25 the virus simply fading out, under the assumption that pathogen transmissibility is fixed
 26 at its value when the imported case enters the population. If the introduction occurs at
 27 time t , when the infection rate is $\beta(1 - \Lambda(t))$ and the time-varying reproduction number
 28 is $R_V(t) = \frac{\beta(1-\Lambda(t))}{\mu}$, then the outbreak probability can be derived by first denoting by $q_{I(t)}$
 29 the probability that an outbreak does not occur starting from $I(t)$ infected individuals.
 30 Conditioning on whether the first event is an infection or a removal event gives

31

$$32 \quad q_{I(t)} = \frac{\beta(1 - \Lambda(t))}{\beta(1 - \Lambda(t)) + \mu} q_{I(t)+1} + \frac{\mu}{\beta(1 - \Lambda(t)) + \mu} q_{I(t)-1}.$$

33

34 In particular, starting from a single introduction at time t ,

35

$$36 \quad q_1 = \frac{\beta(1 - \Lambda(t))}{\beta(1 - \Lambda(t)) + \mu} q_2 + \frac{\mu}{\beta(1 - \Lambda(t)) + \mu} q_0.$$

37

38 Since infections occur according to a branching process, $q_2 = q_1^2$. Furthermore, an

39 outbreak will not occur if there are no infected individuals (i.e. $q_0 = 1$), so that

40

$$41 \quad \beta(1 - \Lambda(t))q_1^2 - (\beta(1 - \Lambda(t)) + \mu)q_1 + \mu = 0.$$

42

43 Solving this quadratic equation, and taking the minimal non-negative solution (as
44 dictated by Markov chain theory when calculating the probability that a branching
45 process fades out [1]) leads to the IOR,

46

$$47 \quad \text{IOR} = 1 - q_1 = \begin{cases} 0 & \text{for } R_V(t) \leq 1, \\ 1 - \frac{1}{R_V(t)} & \text{for } R_V(t) > 1. \end{cases}$$

48

49

50 *Case outbreak risk (COR)*

51

52 Unlike the IOR, the COR accounts for changes in $\beta(1 - \Lambda(t))$ that occur after the virus is
53 introduced into the host population when assessing the outbreak risk. Similarly to above,
54 the probability that an outbreak does not occur starting from I infected individuals in the
55 population at time t is denoted by $q_I(t)$. Then, starting from a single introduction into the
56 population at time t and conditioning on the possible events events in the next Δt days
57 (where Δt represents a short time period, so that at most a single event can occur in the
58 interval $[t, t + \Delta t)$) gives

59

$$60 \quad q_1(t) = \beta(1 - \Lambda(t))\Delta t q_2(t + \Delta t) + \mu\Delta t q_0(t + \Delta t) + (1 - \beta(1 - \Lambda(t))\Delta t - \mu\Delta t)q_1(t + \Delta t).$$

61

62 Since infections occur according to a branching process, $q_2(t + \Delta t) = q_1(t + \Delta t)^2$.

63 Furthermore, an outbreak will not occur if there are no infected individuals (i.e.

64 $q_0(t + \Delta t) = 1$), so that

65

66
$$q_1(t) = \beta(1 - \Lambda(t))\Delta t q_1(t + \Delta t)^2 + \mu\Delta t + (1 - \beta(1 - \Lambda(t))\Delta t - \mu\Delta t)q_1(t + \Delta t).$$

67

68 Rearranging this expression, and taking the limit $\Delta t \rightarrow 0$, gives equation (3) in the main
69 text,

70

71
$$\frac{dq(t)}{dt} = \beta(1 - \Lambda(t))q(t)(1 - q(t)) + \mu(q(t) - 1), \quad (S1)$$

72

73 in which the variable $q_1(t)$ has been replaced by $q(t)$ for notational convenience. This
74 equation can be solved numerically, after which the COR at time t (i.e. the probability that
75 an outbreak occurs) is given by $1 - q(t)$.

76

77 Solving equation (S1) numerically requires the value of $q(t)$ to be known at a single
78 timepoint. In scenarios in which the time-varying reproduction number is above one
79 when the vaccine programme is complete, we solve equation (S1) backwards in time
80 starting from the final condition $q(t^*) = \frac{1}{R_V(t^*)}$, where t^* is the time at which the

81 vaccination programme ends. The rationale for this choice is that the COR matches the
82 IOR in scenarios in which virus transmissibility does not change in future (e.g. the end
83 of the vaccination programme). In scenarios in which $R_V(t)$ is instead below one when
84 the vaccination programme is completed, we set $q(0)$ so that $1 - q(0)$ matches the
85 Numerical Outbreak Risk (NOR) at time $t = 0$ (see below), and then solve equation (S1)
86 forwards in time starting from $t = 0$.

87

88 *Simulated outbreak risk (SOR)*

89

90 The SOR is calculated by simulating the stochastic branching process model 10,000
91 times starting from a single infected individual introduced into the system at time t . The
92 SOR is then given by the proportion of simulations in which the number of individuals
93 infected simultaneously reaches the threshold $M = 100$ as opposed to fading out (i.e.
94 the number of infected hosts reaches 100 before hitting zero).

95

96 To simulate the branching process model, we follow the following steps:

97

1. Set the initial time t , and set $I(t) = 1$.

98

2. Calculate the time of the next event, $t + \tau$, using the expression

99

$$\int_t^{t+\tau} (\beta(1 - \Lambda(s)) + \mu) I(s) ds = -\ln(r_1),$$

100

where r_1 is a random number sampled from a uniform distribution on $(0,1)$.

101

3. Determine whether the next event is an infection event or a removal event. To do
102 this, sample a second random number (r_2) from a uniform distribution on $(0,1)$. If

103

$$r_2 < \frac{\beta(1 - \Lambda(t + \tau))}{\beta(1 - \Lambda(t + \tau)) + \mu},$$

104

then the next event is an infection event; set $I(t + \tau) = I(t) + 1$. If instead the

105

inequality above is not satisfied, then the next event is a removal event; set

106

$I(t + \tau) = I(t) - 1$.

107

4. Repeat steps 2-3 while the outbreak is still ongoing and the threshold value of $M =$
108 100 has not been hit (i.e. $I(t) > 0$ and $I(t) < M$).

109

110 Numerical outbreak risk (NOR)

111

112 The NOR is analogous to the SOR, but with the advantage that it can be calculated

113 without performing model simulations. To calculate the NOR, we define the vector

114 $p(t) = (p_0(t), \dots, p_{M-1}(t), p_M(t))^T$, where, for $i \leq M - 1$, $p_i(t)$ represents the probability

115 that $I(t) = i$ and that the number infected has not reached threshold M by time t . The

116 variable $p_M(t)$ is defined as the probability that $I(t)$ has reached threshold M by time t . As

117 with the SOR, we again use a value of $M = 100$ in our analyses. Then, the Kolmogorov

118 forward equations [2] are $\frac{dp(t)}{dt} = Q(t)p(t)$, where

119

$$120 \quad Q(t) = \begin{pmatrix} 0 & \mu & 0 & \dots & \dots & 0 \\ 0 & -(\beta(1 - \Lambda(t)) + \mu) & 2\mu & \dots & \dots & 0 \\ 0 & \beta(1 - \Lambda(t)) & -(2\beta(1 - \Lambda(t)) + 2\mu) & \dots & \dots & 0 \\ 0 & 0 & 2\beta(1 - \Lambda(t)) & \dots & \dots & 0 \\ \vdots & \vdots & \vdots & \ddots & \vdots & \vdots \\ 0 & 0 & 0 & \vdots & (M - 1)\mu & 0 \\ 0 & 0 & 0 & \vdots & -((M - 1)\beta(1 - \Lambda(t)) + (M - 1)\mu) & 0 \\ 0 & 0 & 0 & \vdots & (M - 1)\beta(1 - \Lambda(t)) & 0 \end{pmatrix}.$$

121

122 In this matrix, the state $I(t) = M$ is an absorbing state (analogous to stopping the

123 simulations as soon as $I(t)$ reaches the threshold M when calculating the SOR). The

124 probability that that are at least M infected individuals at some stage following the

125 introduction of a single infected host into the population at time t is then given by

126 $NOR(t) = \lim_{s \rightarrow \infty} (p_M(s))$, where $p(t) = (0, 1, 0, \dots, 0, 0)^T$. The NOR is therefore calculated by

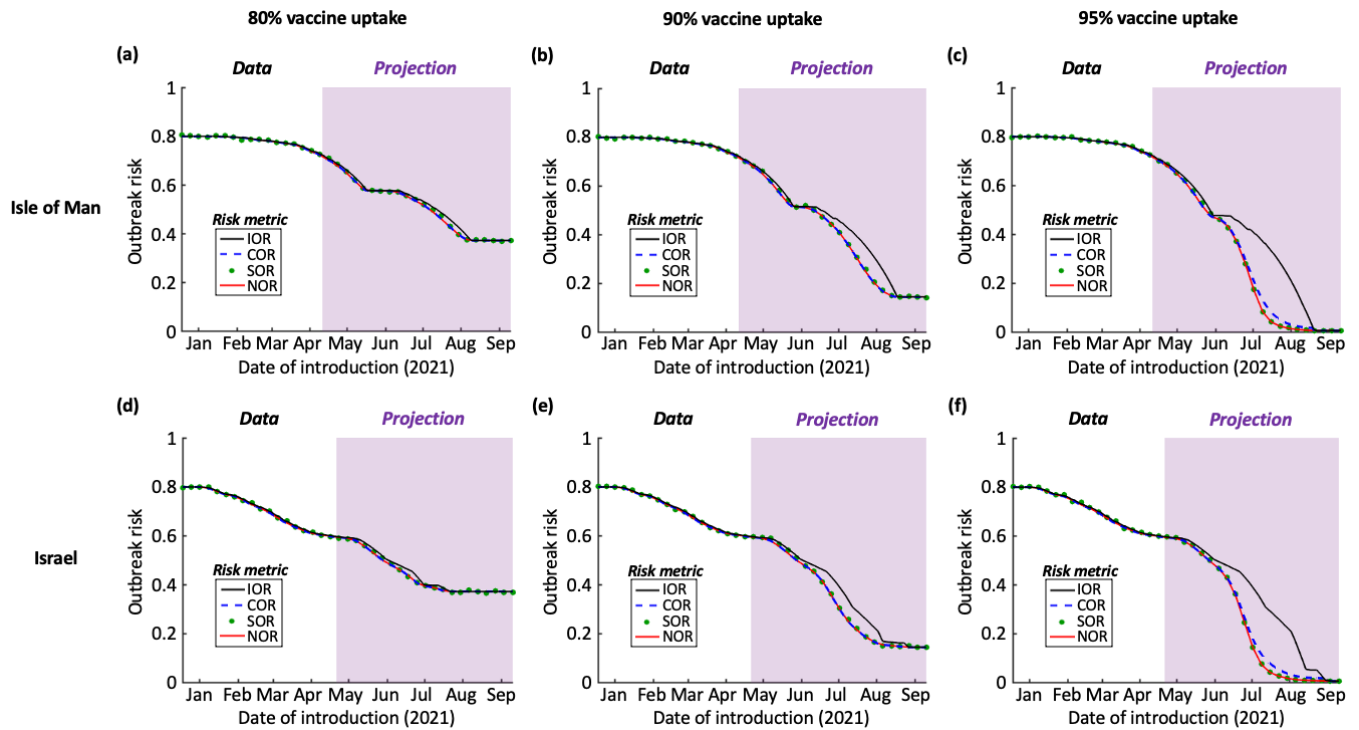
127 solving the Kolmogorov forward equations numerically until the system converges to an

128 equilibrium state.

129

130 **Supplementary figures**

131



132

133 Figure S1. The effect of the assumed vaccine uptake on the outbreak risk. (a) Isle of Man. Analogous

134 panel to Fig 3b in the main text, but with vaccine uptake $\nu = 0.8$. (b) Analogous panel to Fig 3b in the

135 main text, but with vaccine uptake $\nu = 0.9$. (c) Analogous panel to Fig 3b in the main text, but with

136 vaccine uptake $\nu = 0.95$. (d) Israel. Analogous panel to Fig 3d in the main text, but with vaccine uptake

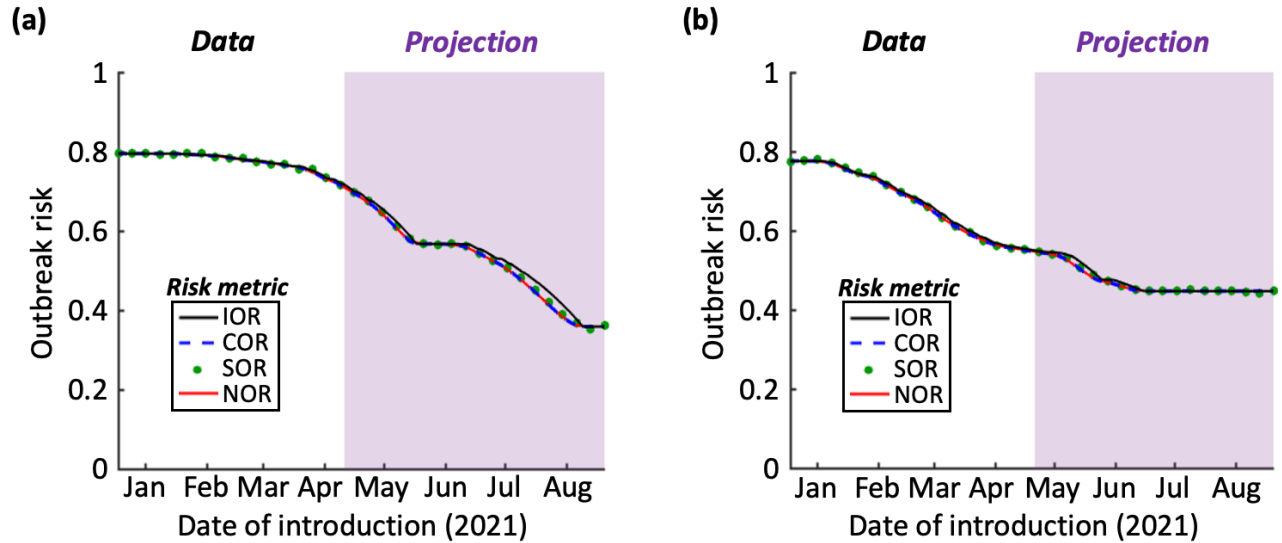
137 $\nu = 0.8$. (e) Analogous panel to Fig 3d in the main text, but with vaccine uptake $\nu = 0.9$. (f) Analogous

138 panel to Fig 3d in the main text, but with vaccine uptake $\nu = 0.95$. Ticks on the x-axes refer to the starts of

139 the months labelled.

140

141



142

143

144

145

146

147

148

149

150

151

152 References

153

154

155

156

Figure S2. The effect of immunity due to prior infections on the outbreak risk. (a) Isle of Man. Analogous panel to Fig 3b in the main text, but with R_0 reduced by 1.35% (an approximation of the proportion of the population who had been infected before 1st May 2021, based on 1,154 confirmed cases out of a population of $N = 85,400$). (b) Israel. Analogous panel to Fig 3d in the main text, but with R_0 reduced by 9.55% (an approximation of proportion of the population who had been infected before 1st May 2021, based on 838,000 confirmed cases out of a population of $N = 8,772,800$). Ticks on the x-axes refer to the starts of the months labelled.

1. Norris JR. Markov Chains. Cambridge University Press; 1998.
2. Keeling MJ, Ross J V. On methods for studying stochastic disease dynamics. J R Soc Interface. 2008;5: 171–181.