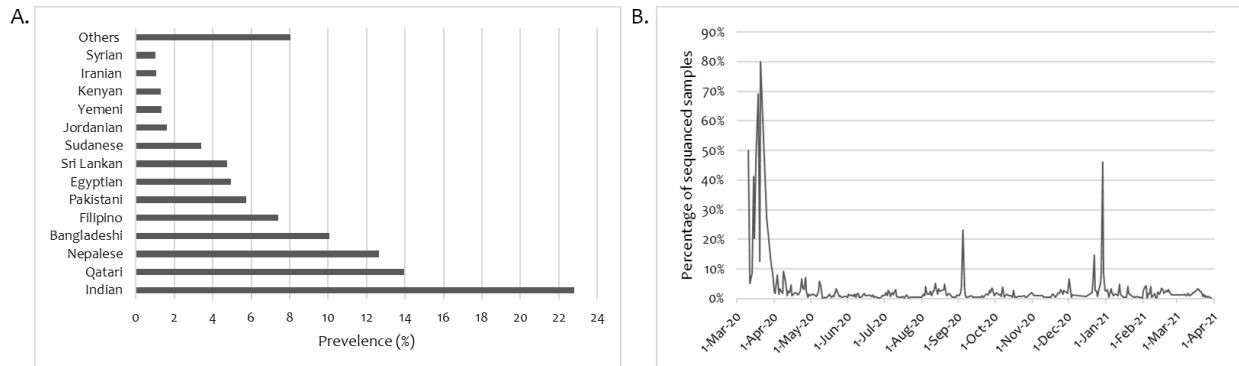
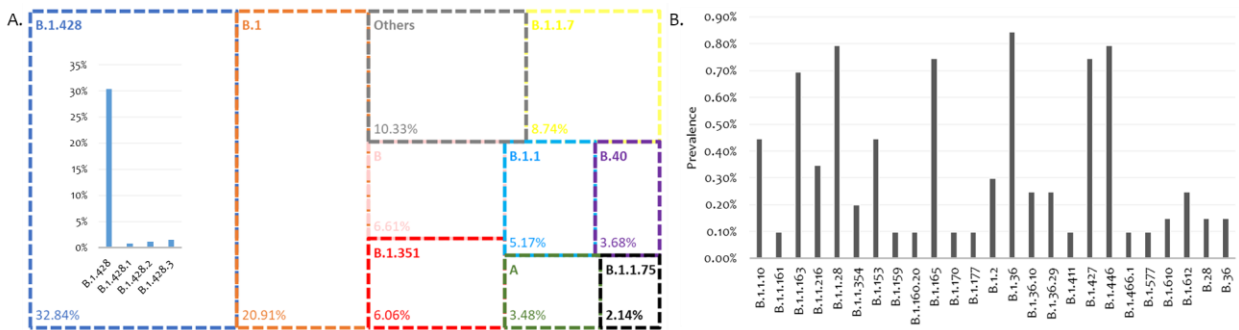


Supplementary Data 1

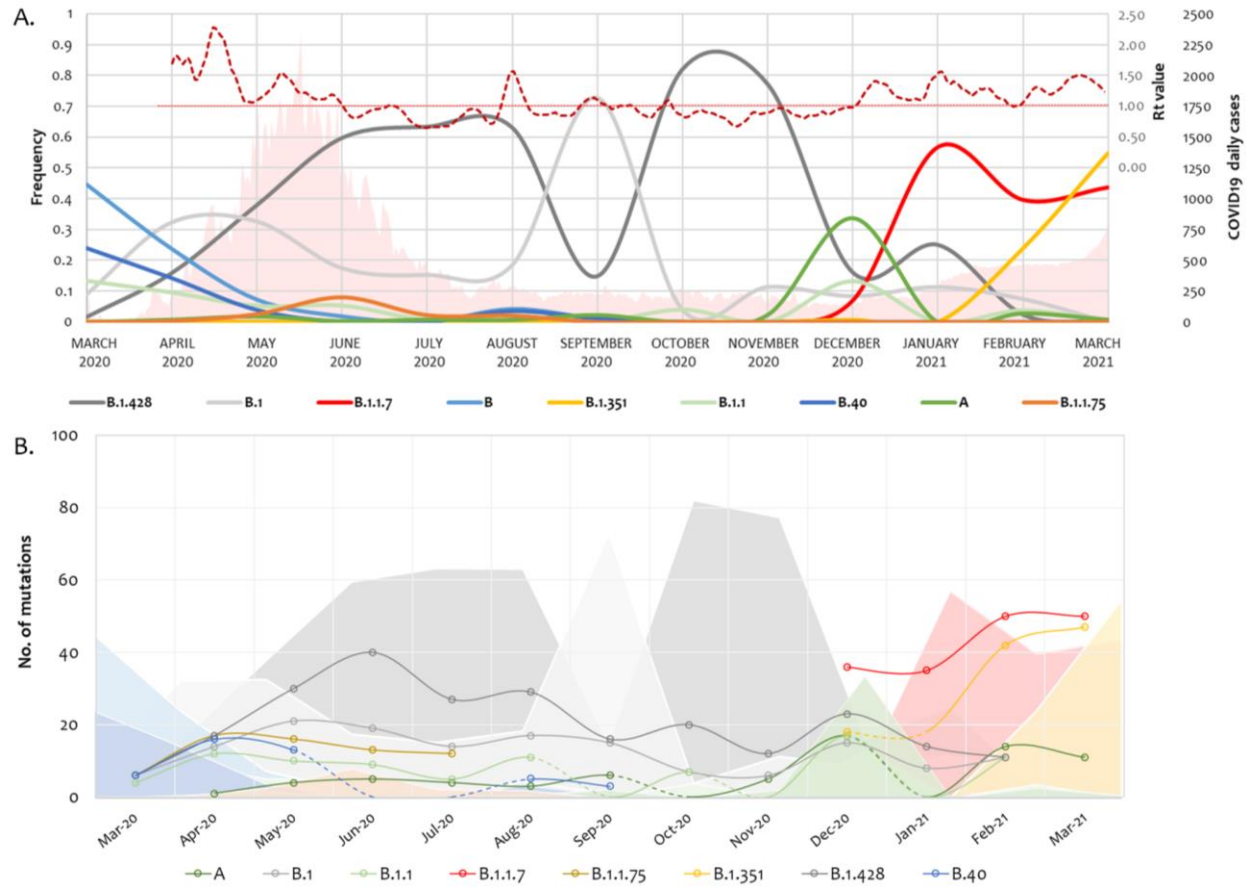


Supplementary Figure.1. Nationalities and the frequency of sequenced samples in the studies cohort.

(A) Nationalities observed at least at 1% prevalence. Others (<1%) includes: Algerian, American, Argentinean, Australian, Bahraini, Brazilian, British, Cameroonian, Canadian, Chinese, Cuban, Cypriot, Djiboutian, Dominican, Emirati, Eritrean, Ethiopian, French, Gambian, German, Ghanaian, Indonesian, Irish, Italian, Lebanese, Malaysian, Malian, Moroccan, Myanmar, Nepalese, Nigerian, Omani, Palestinian, Portuguese, Romanian, Russian, Saudi, Serbian, Somali, South African, South Korean, Spanish, Sudanese, Swiss, Tajik, Thai, Tunisian, Turkish, Ugandan, and Ukrainian. **(B)** Percentage of sequenced samples in reference to the daily COVID19 positive cases in Qatar.



Supplementary Figure.2. Lineages detected in Qatar's sequenced cohort. (A) Highly prevalent lineages (>1%) and **(B)** Low prevalent lineages (<1% and in at least two sequences). Nomenclature is based on Pangolin tool.



Supplementary Figure.3. SARS-COV-2 lineages evolution over the one-year study period (March 2020-March 2021). **(A)** Frequency of the highly prevalent lineages across the one year period in reference to COVID19 daily positive cases (area in light pink) and the Effective Reproduction Number (R_t , in dotted deep red line). The light red line highlights an R_t value of 1. **(B)** Accumulation of non-synonymous mutations in the genomes of major SARS-CoV-2 lineages.