

1 **Airway antibodies emerge according to COVID-19 severity and wane rapidly but**
2 **reappear after SARS-CoV-2 vaccination**

3

4 Alberto Cagigi¹, Meng Yu¹, Sara Falck-Jones¹, Sindhu Vangeti¹, Björn Österberg¹, Eric
5 Åhlberg¹, Lida Azizmohammadi¹, Ryan Falck-Jones^{2,3}, Pia C Gubisch¹, Mert Ödemis¹,
6 Farangies Ghafoor¹, Julia Svensson¹, Mona Eisele¹, Klara Lenart¹, Max Bell^{2,3}, Niclas
7 Johansson^{4,5}, Jan Albert^{6,7}, Jörgen Sälde⁸, Deleah Pettie^{9,10}, Michael Murphy^{9,10}, Lauren
8 Carter^{9,10}, Neil P King^{9,10}, Sebastian Ols¹, Anna Färnert^{4,5}, Karin Loré^{1*} and
9 Anna Smed-Sörensen^{1*}

10

11 ¹Division of Immunology and Allergy, Department of Medicine Solna, Karolinska Institutet, Karolinska
12 University Hospital, Stockholm, Sweden. ²Department of Physiology and Pharmacology, Karolinska
13 Institutet, Stockholm, Sweden. ³Department of Perioperative Medicine and Intensive Care, Karolinska
14 University Hospital, Stockholm, Sweden. ⁴Division of Infectious Diseases, Department of Medicine
15 Solna, Center for Molecular Medicine, Karolinska Institutet, Sweden. ⁵Department of Infectious
16 Diseases, Karolinska University Hospital Solna, Stockholm, Sweden. ⁶Department of Microbiology,
17 Tumor and Cell Biology, Karolinska Institutet, Stockholm, Sweden. ⁷Clinical Microbiology, Karolinska
18 University Hospital Solna, Stockholm, Sweden. ⁸Närakut SLSO, Karolinska University Hospital Solna,
19 Stockholm, Sweden. ⁹Department of Biochemistry, University of Washington, Seattle, WA, United
20 States. ¹⁰Institute for Protein Design, University of Washington, Seattle, WA, United States.

21 *Equal contribution.

22

23 **Correspondence to:** Karin Loré and Anna Smed-Sörensen, Division of Immunology and
24 Allergy, Department of Medicine Solna, Karolinska Institutet, Visionsgatan 4, BioClinicum
25 J7:30, Karolinska University Hospital, 171 64 Stockholm, Sweden.

26 E-mail addresses: karin.lore@ki.se; anna.smed.sorensen@ki.se

27

28 **Conflict of interest statement**

29 The authors have declared that no conflict of interest exists.

NOTE: This preprint reports new research that has not been certified by peer review and should not be used to guide clinical practice.

30 **Abstract**

31 Understanding the presence and durability of antibodies against SARS-CoV-2 in the airways
32 is required to provide insights on the ability of individuals to neutralize the virus locally and
33 prevent viral spread. Here, we longitudinally assessed both systemic and airway immune
34 responses upon SARS-CoV-2 infection in a clinically well-characterized cohort of 147 infected
35 individuals representing the full spectrum of COVID-19 severity; from asymptomatic
36 infection to fatal disease. In addition, we evaluated how SARS-CoV-2 vaccination influenced
37 the antibody responses in a subset of these individuals during convalescence. Not only
38 systemic but also airway antibody responses correlated with the degree of disease severity
39 with increasing levels in patients with mild, moderate and severe disease, respectively.
40 However, while systemic IgG levels were durable for up to 8 months, airway IgG and IgA had
41 declined significantly within 3 months. In contrast, antigen-specific memory B cells were well
42 maintained and comparable across disease severity. After vaccination, there was an increase
43 in both systemic and airway antibodies, in particular IgG, often exceeding the levels found
44 during acute disease. In contrast to plasma, airway antibody levels were significantly
45 elevated after the boost vaccination, highlighting the importance of prime and boost
46 vaccination also for previously infected individuals to obtain optimal mucosal protection.

47

48

49 **Introduction**

50 Severe acute respiratory syndrome coronavirus 2 (SARS-CoV-2) infection that causes
51 coronavirus disease 2019 (COVID-19) presents with a wide range of disease severity from
52 asymptomatic to fatal (1, 2). Individuals of advanced age and/or those with comorbidities
53 are overrepresented among patients who develop severe disease (3). However, the majority
54 of SARS-CoV-2 infected individuals experience asymptomatic infection or only mild disease
55 (4).

56

57 Systemic antibodies against the SARS-CoV-2 nucleocapsid (N) and the viral surface
58 glycoprotein spike (S) as well as against the receptor binding domain (RBD) (5, 6) of the S
59 protein have been studied extensively (7-11). Responses against the internal N protein are
60 often readily detectable but their contribution to protection and control of disease is not
61 clear (8, 10). In contrast, antibody responses against S and, in particular, against the RBD
62 result in virus neutralization (12). Responses against the RBD are thus likely necessary for
63 protection from re-infection or prevention of symptomatic disease. However, the presence
64 and durability of antibodies during COVID-19 in the airways is still not well understood.

65 The respiratory tract is the initial site of viral infection and replication. The availability
66 of antibodies at this site could therefore determine the ability to neutralize the virus locally
67 in case of (re-) exposure and prevent viral spread. Generally, antibodies present in the
68 circulation and at local sites are the result of secretion from short-lived plasmablasts and/or
69 terminally differentiated plasma cells in the bone marrow or mucosal sites (13). However,
70 the response to a secondary infection once antibody titers have waned below protective
71 levels mostly relies on the presence of resting antigen-specific memory B cells that are
72 rapidly activated upon antigen re-exposure (13). Whether vaccination against SARS-CoV-2

73 also elicits systemic antibody responses in addition to local antibodies in the airways of
74 individuals who recovered from COVID-19, and via which mechanism, is currently unknown.

75 In this study we present data from a cohort of patients that we have followed since
76 mid-March 2020, which was the start of the pandemic in Sweden. We show longitudinal
77 data on virus-specific systemic and airway antibody and B cell memory responses generated
78 in this clinically well-characterized cohort of individuals with SARS-CoV-2 infection (n=147)
79 ranging from asymptomatic SARS-CoV-2 infection to fatal COVID-19 disease. In addition, we
80 show how subsequent SARS-CoV-2 vaccination during the convalescent phase significantly
81 boosts not only the systemic but also airway antibody responses.

82

83 **Results**

84 **Patient enrollment, assessment of disease severity and timeline**

85 Individuals were sampled longitudinally in blood and airways during acute
86 infection/symptomatic disease and during convalescence (median 3 and 8 months from
87 symptom onset). Donor-matched plasma, peripheral blood mononuclear cells (PBMC),
88 nostril swabs (NSW) and nasopharyngeal aspirates (NPA) were collected from all patients
89 across disease severities whereas endotracheal aspirates (ETA) were only collected from
90 intubated patients receiving intensive care (Figure 1). Disease severity was assessed daily,
91 using a seven-point scale derived from the respiratory domain of the sequential organ failure
92 assessment (SOFA) score (14, 15), with additional levels for non-admitted and fatal cases
93 (Table 1). Patients were grouped based on peak disease severity, which may differ from
94 disease severity at time of sampling (Table 1 and Figure 1B). In addition, pre-pandemic
95 healthy controls (PPHC) (n=30) as well as individuals with influenza-like symptoms, and
96 possible SARS-CoV-2 exposure, but with negative diagnostic PCR results (PCR-) (n=9) were

97 sampled in the same way and included as controls. Generally, severe patients were sampled
98 later after symptom onset as compared with individuals with mild disease resulting in a large
99 time frame of study inclusion with respect to symptom onset (Table 1 and Figure 1B) (16).
100 For simplicity, the sampling period/study inclusion during ongoing infection and
101 hospitalization (for those hospitalized) is referred to as the “acute” phase. Samples collected
102 at the first follow-up visit during convalescence (range 46-168 days from symptom onset;
103 median 108 days) are referred to as the “3 months” timepoint whereas those collected at
104 the second follow-up visit (range 187-344 days; median 245 days) are referred to as the “8
105 months” timepoint. Time of the first convalescent follow-up sampling from acute sampling
106 ranged 33-159 days; median 90 days (Table 1).

107

108 **Plasma IgG and IgA responses to N, S and RBD across COVID-19 severity during acute** 109 **disease and after recovery**

110 We first assessed systemic IgG and IgA responses against N, S and RBD at the time of study
111 inclusion that ranged between 0-54 days from onset of symptoms; median 16 days for the
112 whole cohort (Table 1). Both IgG and IgA levels against all viral proteins followed the degree
113 of disease severity with increasing levels in patients with mild, moderate and severe disease
114 respectively (Figure 2A). In line with previous reports, IgG against N were the most elevated
115 in patients who had severe disease or a fatal outcome (8, 10). The degree of disease severity
116 also associated with the levels of systemic inflammation as indicated by the levels of C-
117 reactive protein (CRP) in blood and by the neutrophil-lymphocyte ratio (NLR) (Figure 2B).
118 Interestingly, the levels of neutrophils also specifically associated with disease severity
119 (Figure 2D) and with all of the systemic antibody responses during acute disease (Figure 2D
120 and Supplementary figure 1). The levels of IgG during acute disease, and to a lower extent

121 IgA, against all tested antigens, exhibited a positive correlation with the days from onset of
122 symptoms (Supplementary figure 2A). This difference in antibody titers over time might be
123 slightly accentuated by the fact that in our cohort the patients with moderate/severe
124 disease, and even fatal outcome, for whom we initially observed low IgG titers against RBD,
125 had an early study inclusion (on average 13 days from onset of symptoms). In fact, these
126 patients showed significantly higher titers later during the acute phase (on average 19 days)
127 (Supplementary figure 2B-C). Nonetheless, patients with mild disease displayed lower levels
128 of plasma IgG against RBD as compared with more severe patients, also when samples were
129 taken after similar duration of symptoms (Supplementary figure 2D). After 3 months from
130 symptom onset, the IgG levels remained high in the plasma of patients recovering from
131 moderate and severe disease, while the levels had further increased in the individuals who
132 had a mild disease (Figure 3A). However, despite this increase over time, the antibody levels
133 in mild patients never reached the levels observed for moderate and severe patients or for
134 those who had a fatal outcome (Figure 3 and Supplementary figure 3A).

135 The IgG levels had significantly waned from 3 to 8 months in patients who recovered from
136 moderate and severe disease, but the decline was smaller in patients who experienced a
137 mild disease (Figure 3B and Supplementary figure 3). In contrast to IgG, IgA levels from the
138 acute phase, against all antigens, waned substantially in most patients already after 3
139 months (Figure 3 and Supplementary figure 3). Antibody titers during acute disease
140 correlated with peak disease severity as well as with disease severity at time of sampling
141 (Supplementary figure 4). The correlation between antibody titers and peak disease severity
142 was maintained also when analyzing the antibodies at the 3- and 8-month follow-up visits
143 (Supplementary figure 4) as also observed in another study (17).

144

145 **Airway IgG and IgA responses and assessment of B cell frequencies in the respiratory tract**

146 We next measured the levels of IgG and IgA in the upper and lower airways and compared
147 with levels in plasma at matched time points. Due to limited respiratory sample volumes, we
148 focused our analyses on IgG and IgA responses against the RBD since these responses are
149 most critical for virus neutralization. We found that RBD-specific antibodies could be
150 detected in nasal swabs (NSW) (Figure 4A) and nasopharyngeal aspirates (NPA) (Figure 4B)
151 during the acute phase across all disease severities (Figure 4A, B and C). In agreement with
152 our observations in plasma, antibody levels in the upper respiratory tract were higher in
153 patients with moderate or severe disease as compared with individuals with mild disease.
154 Both IgG and IgA levels had declined significantly already after 3 months, with IgG declining
155 to almost undetectable levels (Figure 4A- C). RBD antibody levels during acute infection were
156 on average higher in NPA compared to NSW for both IgG and IgA across disease severity
157 (Figure 4A- C) suggesting that antibody titers may increase not only with disease severity but
158 also with sampling at different depths of the upper airways. To address this, we compared
159 donor-matched NSW (peripheral nostril), NPA (upper airway) and ETA (trachea) collected at
160 the same time point during acute disease from intubated patients from whom we had both
161 peripheral, upper and lower airway samples. Interestingly, we still found significantly higher
162 levels of IgA against the RBD in NPA as compared with NSW and ETA (Figure 4D).
163 Furthermore, nasopharyngeal antibody levels (both IgG and IgA) showed a strong correlation
164 with plasma antibody responses (Figure 4E). We also assessed the presence of B cells in the
165 respiratory tract of COVID-19 patients by analyzing the lymphocytes that could be retrieved
166 from NPA and ETA as compared with NPA from three healthy controls (HC). Despite
167 generally obtaining a significantly lower cell yield from NPA as compared with ETA,
168 lymphocyte frequencies did not differ in NPA and ETA from COVID-19 patients but both were

169 lower as compared with NPA from HC. Instead, the proportion of B cells in NPA was higher
170 as compared with ETA in COVID-19 patients and similar to NPA from HC (Figure 5A-B).

171

172 **Expansion of SARS-CoV-2-specific memory B cells**

173 As mentioned above, the virus-specific B cell memory pool will be essential to remount a
174 rapid antibody response in the case of re-exposure. To assess the establishment of antigen-
175 specific memory B cells, donor-matched PBMC from acute disease and convalescence were
176 analyzed side-by-side using fluorescently labelled S and RBD probes (18-20). Patients with
177 moderate/severe disease showed the presence of Ig-switched memory B cells specific to S in
178 the acute phase and the memory B cell pool had further expanded after 3 months (ranging
179 from 0.009 to 1.35%; mean 0.42% during convalescence) (Figure 5C-F). Individuals with mild
180 disease showed lower frequencies of S-specific memory B cells during acute disease than the
181 patients with moderate/severe disease. In fact, the frequencies of S-specific memory B cells
182 in the mild patients during the acute phase were not different from those observed in the
183 PCR- individuals or in the PPHC (Figure 5C and E). However, the frequencies of S-specific
184 memory B cells had substantially increased in the mild patients after 3 months (ranging from
185 0.17% to 0.64%; mean 0.35% during convalescence) and were comparable to frequencies
186 among severe patients. In addition, the levels were well maintained between 3 and 8
187 months in all groups (Figure 5E and F). Further phenotyping of the S-specific memory B cells
188 indicated that the majority of these cells may be specific for epitopes on S outside of the
189 RBD (Figure 5D). S-specific memory B cells in the circulation were predominantly IgG+, rather
190 than IgA+ (Figure 5D).

191

192 **The effect of vaccination on systemic and airway antibody levels**

193 We finally evaluated the influence of SARS-CoV-2 vaccination on the systemic and airway
194 antibody responses (Figure 6A). A subset of 12 individuals, 2 that recovered from mild, 4
195 from moderate and 6 from severe COVID-19 one year earlier, were sampled after receiving
196 their scheduled vaccination (range 270-358 days; median 326 days from symptom onset)
197 (Table 2). Donor-matched plasma, NSW and NPA were collected at different timepoints
198 after prime (7-16 days) from 10 patients and after boost (7-28 days) from 7 patients and
199 analyzed for the presence of IgG and IgA against RBD. Antibodies against N were also
200 measured in plasma as a negative control as the vaccines used were based on the S protein.
201 After vaccination, all individuals demonstrated a significant increase of both plasma IgG and
202 IgA against the RBD (Figure 6B and Supplementary figure 5) but, as expected, not against N
203 (Figure 6B). The plasma antibody levels, especially IgG, to RBD further increased from prime
204 to boost vaccination in the majority of individuals analyzed. However, due to the low
205 numbers of individuals (n=5) who had this sample set available, this did not reach statistical
206 significance ($p=0.06$). While the IgG levels to RBD after boost vaccination exceeded the levels
207 detected during the acute phase, the IgA levels were equally high (Figure 6C). The airway IgG
208 levels to RBD also showed a noticeable increase after the boost vaccination in particular. In
209 fact, the IgG levels in the airway samples, both nasal swabs and NPA, were in most
210 individuals significantly higher after boost vaccination than they were in the acute stage of
211 the disease (Figure 6C). In contrast, this was not noted for IgA levels to RBD.

212

213 **Discussion**

214

215 By now, it is well documented that higher systemic antibody levels are generated in severe
216 as compared with mild COVID-19 (7-11, 21-23). In contrast, the presence and durability of

217 antibodies against SARS-CoV-2 in the airways is much less understood. Nor is it known if and
218 how respiratory antibody levels are influenced by SARS-CoV-2 vaccination in humans. In this
219 study, we performed longitudinal analyses of systemic and upper and lower airway antibody
220 responses in a clinically well-characterized and relatively large cohort of individuals with
221 SARS-CoV-2 infection representing the full spectrum of COVID-19 severity ranging from
222 asymptomatic infection to fatal disease. Matched analyses in blood and in the airways
223 enabled us not only to address the magnitude and durability of systemic antibodies to SARS-
224 CoV-2 but also to gain insights into the prospects of protective capacity locally in the mucosa
225 at virus re-entry. This is one key aspect still largely unknown yet critical for our
226 understanding of immunity to and protection from SARS-CoV-2. Furthermore, we studied
227 how the systemic versus airway antibody levels were affected by vaccination. Collectively,
228 this data will contribute to a better understanding of long-term protective effects and
229 whether vaccination is important to boost the capacity of virus neutralization in the airways
230 and thus reducing re-infection and virus spread.

231
232 Airway mucus along the respiratory tract is thought to serve as a barrier that can trap
233 respiratory viruses via virus glycoprotein-mucin interactions (24). However, it has been
234 shown that local immobilization of respiratory viruses such as influenza viruses in the
235 airways mostly occurs by binding with virus-specific antibodies present in the mucus (25). As
236 the respiratory tract is the initial site of viral infection and replication, the levels of IgG and
237 IgA against the RBD in the upper and lower airways are likely critical for SARS-CoV-2
238 neutralization and could therefore help predict the ability of individuals to neutralize the
239 virus locally in case of re-exposure. Low but detectable levels of antibodies to SARS-CoV-2
240 have previously been reported in saliva during convalescence (26). In our study we found

241 that IgG and IgA against the RBD can be readily detected in the upper and lower airway
242 during acute disease and that such levels correlated with the systemic response at the same
243 time point and also followed disease severity. However, for all the patients across disease
244 severities, airway antibodies waned to low levels much faster than those in plasma during
245 convalescence. Whether these low antibody levels observed at respiratory sites will be
246 sufficient for preventing virus re-entry or for protection is not known. The correlation
247 between systemic and airway antibody levels during acute disease raises questions on
248 whether the low levels of antibodies in the airways during convalescence are due to
249 decreased antibody generation locally at mucosal sites or are rather caused by decreased
250 dissemination from the periphery once systemic antibody levels start to wane. Antibodies in
251 the upper respiratory tract have been shown to be dominated by secretory IgA which are
252 mostly produced by plasma cells in the lamina propria of mucosa-associated lymphoid tissue
253 (MALT) (27, 28). We detected high levels of IgA in the upper airways early during acute
254 COVID-19 that rapidly declined during convalescence, following the pattern observed for
255 systemic IgA levels here and in other reports (29-31). This suggests that at least some IgA
256 disseminated into the airways from the circulation. In contrast, the dynamics of IgG were
257 different in the respiratory samples compared to plasma with airway IgG following the same
258 kinetics as IgA, while systemic IgG were well maintained up to 8 months.

259

260 When we assessed the presence of lymphocytes in the different airway compartments
261 during acute disease, we observed higher proportion of B cells along with high antibody
262 levels, especially IgA, in the nasopharynx, as compared with the nostril or the endotracheal
263 space. It has previously been shown that the majority of antibody secreting cells generated
264 after intranasal immunization with live-attenuated vaccines in rodents may reside in the

265 respiratory tract rather than in the spleen and bone marrow (32) and that these cells secrete
266 IgA early after a later challenge with the vaccination pathogen (33-35). Therefore, it is
267 possible that B cells generated during SARS-CoV-2 infection also reside locally in the airways
268 and contribute to antibody levels in the nasopharynx. While the antibody content in NPA
269 and ETA could be partially influenced by differences in sampling methods and sample
270 volumes, these data suggest that antibody abundance and possibly virus neutralization via
271 IgA differ along the respiratory tract and may be more pronounced in the nasopharynx
272 compared to the lower airways. Altogether, our observations demonstrate that moderate
273 and severe COVID-19 result in high levels of circulating antibodies and despite that IgG levels
274 are well-maintained, antibody levels in the airways decline significantly after the acute
275 phase.

276
277 Once antibody titers have waned below protective levels, the response to a secondary
278 infection will mostly rely on the presence of resting antigen-specific memory B cells that can
279 rapidly activate upon antigen re-exposure (13). Therefore, similar to other studies (18-20),
280 we investigated the induction and maintenance of S-specific memory B cells. Importantly,
281 because of the comprehensive distribution of disease severity represented in our cohort, we
282 were able to compare the opposite ends of the COVID-19 disease spectrum by focusing on
283 individuals with mild disease as compared with patients with moderate/severe disease who
284 had the highest circulating IgG and IgA levels. Strikingly, despite the fact that these patients
285 were at the opposite ends of the disease severity spectrum, they had comparable levels of S-
286 specific memory B cells during convalescence. These appeared to be specific for epitopes on
287 S outside of the RBD and were predominantly IgG+, rather than IgA+, which may affect the

288 proportions of different isotypes subsequently produced in the event of antigen re-
289 exposure.

290

291 Immunization at mucosal sites such as for example intranasal administration of live-
292 attenuated influenza vaccines generally elicits mucosal immune responses (36). However,
293 several studies, primarily performed with DNA and virus-like particles (VLP) vaccines, have
294 shown that intradermal, subcutaneous and intramuscular immunization also can result in
295 local mucosal responses that protect from mucosal challenge (37). It has been speculated
296 that this could be due to free antigen or B cells migrating from the vaccine draining lymph
297 nodes to the MALT (37-39). A two-dose regimen of Moderna's mRNA-1273 vaccine
298 administered intramuscularly and followed by intranasal and intratracheal challenge with
299 SARS-CoV-2 in rhesus macaques has indeed shown to result in local virus neutralization in
300 the airways (40). Antibodies in bronchoalveolar lavage and nasal swabs were elicited in a
301 vaccine dose-dependent manner assessed after the boost vaccination (41).

302

303 Whether the systemic and/or mucosal immunity generated during natural infection is
304 boosted by vaccination and results in a similar or enhanced magnitude of responses would
305 be important knowledge to acquire for planning the best vaccination strategies for SARS-
306 CoV-2 as well as for other respiratory viruses. Our results on individuals recovering from
307 COVID-19 and subsequently receiving vaccination indicated a marked increase of both IgG
308 and IgA levels systemically but also strikingly in the airways, which in the majority of cases
309 exceeded the levels observed during acute disease. Notably, the antibody increase observed
310 between prime and boost vaccination was more prominent in the airways than systemically.
311 Recent studies on systemic antibody responses after SARS-CoV-2 vaccination in individuals

312 who recovered from COVID-19 have shown a significant increase in antibody levels after one
313 vaccine dose with no or only a small increase after the second dose (42-46). This suggests
314 that one vaccine dose may be sufficient to protect these individuals from disease in case of
315 re-infection which is important for vaccine dose management at the population level.
316 However, our data indicate that only assessing the systemic antibody levels after vaccination
317 is to some extent misleading as respiratory antibody levels, and likely virus neutralization,
318 may be substantially better with a prime-boost vaccination strategy rather than with one
319 single dose. The higher levels of airway antibodies after two vaccine doses may be explained
320 by even a small increase in circulating antibodies after a second vaccine dose causing a
321 substantial extravasation from the bloodstream into mucosal sites. Interestingly, two recent
322 studies showed the presence of antibodies in the upper respiratory tract of individuals
323 vaccinated against SARS-CoV-2 with higher levels and even neutralizing activity in small
324 subsets of individuals who had recovered from COVID-19 before vaccination (47, 48).

325

326 In summary, here we show that COVID-19 disease severity not only determines the
327 magnitude of systemic but also airway antibody levels with efficient generation of virus-
328 specific memory B cells against SARS-CoV-2 also occurring upon mild disease. While plasma
329 IgG levels were generally well detectable after acute disease in all groups, there was a
330 significant decline in airway antibodies during convalescence. This suggests that antibodies
331 in the airways may not be maintained at levels that prevent local virus entry upon re-
332 exposure. However, our data indicate that the majority of infected individuals have the
333 ability to generate anamnestic responses via the memory B cell pool and that vaccination
334 against SARS-Cov-2 resulted in a substantial rebound of both systemic and airway antibodies
335 in patient who recovered from COVID-19. These data indicate a positive effect of vaccination

336 for increased virus neutralization in the airways and prospects of reduced virus spread,
337 which further supports following the full vaccination schedule also in this population.

338

339 **Methods**

340 **Study design, patient enrollment and sample collection**

341 One hundred and forty-seven (147) PCR-confirmed SARS-CoV-2 infected patients were
342 enrolled at the Karolinska University Hospital and Haga Outpatient Clinic (Haga Närakut),
343 Stockholm, Sweden during March-May 2020 (acute phase) in a time that ranged from 0 to
344 54 days from onset of symptoms as self-reported by individual patients; and during April-
345 September 2020 (3 months) in a time that ranged from 46 to 168 days and during November
346 2020 to February 2021 (8 months) continuing from the previous counts. Patients were
347 enrolled at various settings, ranging from primary to intensive care. In order to recruit
348 asymptomatic and mild cases, household contacts of COVID-19 patients were enrolled and
349 screened with PCR to identify SARS-CoV-2 positive individuals. A small subset of these
350 individuals who experienced influenza-like symptoms and were possibly exposed to SARS-
351 Cov-2 but had a negative diagnostic PCR (PCR-) (n=9 of whom 3 were household contacts of
352 confirmed patients with 1 experiencing fever, and 6 were included based on suspected
353 infection with 4 experiencing fever) were sampled in the same way and included as controls
354 alongside with 30 pre-pandemic healthy control samples (PPHC) from 2016-2018.

355

356 Respiratory failure was categorized daily according to the respiratory domain of the
357 Sequential Organ Failure Assessment score (SOFA)(14). The modified SOFA score (mSOFA)
358 was calculated when arterial partial pressure of oxygen (PaO₂) was not available. In this case
359 peripheral transcutaneous hemoglobin saturation (SpO₂) was used instead (15). Estimation

360 of the fraction of inspired oxygen (FiO_2) based on O_2 flow was calculated as per the Swedish
361 Intensive Care register definition (49). Patients were categorized based on the peak
362 respiratory SOFA or mSOFA value with the 4-point respiratory SOFA score being extended
363 with additional levels to distinguish between admitted and non-admitted mild cases (both
364 respiratory SOFA score 0) and to include fatal outcome. Ten (10) patients with fatal outcome
365 had peak disease severity score 6 prior to death and 2 patients had scores of 4 and 5. For
366 convenience, the resulting 7-point composite peak disease severity (PDS) was condensed
367 into a broader classification consisting of mild (1-2), moderate (3-4), severe (5-6), and fatal
368 (7). Demographics and additional data were collected from medical records, including
369 clinical history and risk factors such as BMI and co-morbidities. Total burden of comorbidities
370 was assessed using the Charlson co-morbidity index (CCI) (50) (Table 1). Additional clinical
371 information on this patient cohort including the modulation of disease from time to study
372 inclusion to peak severity can be found in Falck-Jones et al (16).

373
374 Blood was collected in EDTA-containing tubes from all patients except those admitted to the
375 intensive care unit (ICU) for whom blood was pooled from heparin-coated blood gas syringes
376 discarded in the last 12 hours. For some ICU patients, additional venous blood was also
377 collected in EDTA tubes. Nostril swabs (NSW) and nasopharyngeal aspirates (NPA) were
378 collected from the majority of the patients whereas endotracheal aspirates (ETA) were only
379 collected from patients with mechanical ventilation intubated in the ICU. Admitted patients
380 were sampled during acute disease at up to four timepoints and ICU patient material was
381 collected up at to ten timepoints. For this study, unless otherwise stated, the measurements
382 referring to acute disease were performed with samples collected at the time of study
383 inclusion and when patients returned for their follow-up visits at 3 and 8 months from

384 symptom onset. At follow-up sampling, all study individuals had been discharged (if
385 hospitalized) from the infectious diseases ward but some individuals (<10) who recovered
386 from severe COVID-19 were still in a hospital aftercare ward at the first follow-up sampling.
387 All study participants were confirmed SARS-CoV-2 negative by PCR at the time of follow-up
388 sampling, with the exception of 5 individuals who were PCR + but with high Ct values (>34).

389

390 The study was approved by the Swedish Ethical Review Authority, and performed according
391 to the Declaration of Helsinki. Written informed consent was obtained from all patients and
392 controls. For sedated patients, the denoted primary contact was contacted and asked about
393 the presumed will of the patient and to give initial oral and subsequently signed written
394 consent. When applicable, retrospective written consent was obtained from patients with
395 non-fatal outcomes.

396

397 **Enzyme-linked immunosorbent assay (ELISA)**

398 The presence of IgG or IgA binding against the SARS-CoV-2 Nucleocapsid (N) and Spike (S)
399 trimer or the Receptor Binding Domain (RBD) monomer (5, 6) in plasma and airway samples
400 was assessed by enzyme-linked immunosorbent assay (ELISA). Recombinant proteins were
401 received through the global health-vaccine accelerator platforms (GH-VAP) funded by the
402 Bill & Melinda Gates Foundation. Briefly, 96-half well plates were coated with 50ng/well of
403 the respective protein. Plates were incubated with a selected duplicate dilution that did not
404 provide background noise against ovalbumin used as a negative control (data not shown)
405 (i.e. 1:20 for plasma samples, 1:2 for NSW and NPA, and 1:5 for ETA in 5% milk/PBS buffer).
406 Duplicate 7-point serial dilutions were initially performed for measuring plasma IgG against
407 RBD during acute disease and after vaccination. The half maximal effective concentration

408 (EC₅₀) or the endpoint titer (dilution at the set OD value of 0.1) were calculated using
409 GraphPad Prism 9. However, since for several samples with low antibody concentration
410 (mostly from the asymptomatic/mild category) the EC₅₀ was below the highest dilution used
411 (of 1:20) and therefore below the limit of detection (Supplementary figure 6A), the maximal
412 optical density (OD) at 1:20 dilution was used for most of the analyses. The relation between
413 maximal OD and EC₅₀ was verified in a subset of patients with high IgG and IgA against S
414 (Supplementary figure 6B). To be able to compare pre- and post-vaccination antibody levels
415 that would, in some instances, fall below and above the lower and upper limits of detection,
416 the endpoint titer was used instead. The relation between EC₅₀ and endpoint titer for these
417 samples, is shown in Supplementary figure 5. Detection was performed with mouse and goat
418 anti-human IgG or IgA HRP-conjugated secondary antibodies (clone G18-145 from BD
419 Biosciences and polyclonal from ThermoFisher, respectively) followed by incubation with
420 TMB substrate (BioLegend) which was stopped with a 1M solution of sulfuric acid. Blocking
421 with 5% milk/PBS buffer and washing with 0.1% Tween-20/PBS buffer were performed
422 between each step. Absorbance was read at 450nm and background correction at 550nm
423 using an ELISA reader. Data were reported as maximal absorbance i.e. OD, as stated above,
424 and plotted using GraphPad Prism 9. All of the antibody measurements in plasma and
425 respiratory samples from SARS-CoV-2 patients were run alongside with samples from two
426 different control groups as described above. Interestingly, low but readily detectable IgA
427 reactivity against S was detected in the pre-pandemic healthy controls and in the PCR-
428 individuals (Supplementary figure 6C). After having verified the specificity and sensitivity of
429 our ELISA assay for IgA detection with limiting sample dilutions (Supplementary figure 6D-E),
430 we hypothesize that this might be due to cross-reactivity on the shared portions of the S

431 protein between SARS-CoV-2 and other common cold coronaviruses. Reports have shown
432 that cross-reactivity between coronaviruses exists (51, 52).

433

434 **Flow cytometry**

435 Staining of cells from airway samples was performed fresh. Briefly, samples were centrifuged
436 at 400 g for 5 min at room temperature and cells were washed with sterile PBS. Mucus was
437 removed using a 70 μ m cell strainer and cells were subsequently stained with the
438 appropriate combination of fluorescently labelled monoclonal antibodies as illustrated in
439 Figure 5A. Staining of PBMC was performed on previously cryopreserved samples. The
440 appropriate combination of fluorescently labelled monoclonal antibodies binding to
441 different cell surface markers and with fluorescently labelled S and RBD proteins used as
442 probes for antigen-specific B cells is illustrated in Figure 5C. Probes were prepared from
443 biotinylated proteins using a 4:1 molar ratio (protein:fluorochrome-labelled streptavidin)
444 considering the molecular weight of protein monomers and of the streptavidin only. The
445 probes were prepared using streptavidin conjugated to PE and APC for S and with BV421 for
446 the RBD. The gating strategy for the identification of antigen-specific memory B cells is
447 shown in Figure 5C. Briefly, after identification of lymphocytes in single suspension, live B
448 cells, (i.e. cells not expressing CD3/,CD14/CD16/CD56) were gated. From this gate, B cells
449 were further isolated by expression of CD19 and CD20 and then switched memory B cells
450 were identified as IgD-IgM-. From these, S-specific switched memory B cells were identified
451 by binding to both S protein probes. Further characterization was then carried out by
452 analyzing IgG expression (IgA+ switched memory B cells are assumed to mirror IgD-IgM-IgG-
453 B cells) and fluorescently labelled RBD. Stained cells from airway samples were acquired
454 using a BD LSRFortessa while stained PBMC were acquired using a BD FACSAria Fusion both

455 interfaced with the BD FACSDiva Software. Results were analyzed using BD FlowJo version
456 10.

457

458 **Statistical analyses**

459 All statistical analyses were performed using GraphPad Prism 9. Spearman correlation was
460 used to assess the interdependence of 2 different non-categorical parameters across
461 individuals whereas Wilcoxon matched-pairs signed rank or Mann–Whitney U tests as
462 appropriate, were used to assess differences or similarities for one single parameter
463 between 2 different groups. Kruskal -Wallis with Dunn’s multiple comparisons test was used
464 when assessing comparison between multiple groups.

465

466

467 **Author contributions**

468 Experimental study design: A.C., Ka.L. and A.S-S. Clinical concept design: A.S-S., M.B., N.J.,
469 J.A., J.S. and A.F. Acquisition and sample processing: A.C., M.Y., S. F-J., S.V., B.Ö., E.Å., L.A.,
470 R.F-J., M.Ö., F.G., J.S. and M. E. Generation of data: A.C., M.Y., S. F-J., S.V., L.A. and P.C.G.
471 Provision of custom reagents: D.P., M.M., L.C., and N.P.K. Analysis and interpretation of
472 data: A.C., Ka.L. and A.S-S. Critical revision of the manuscript: all authors. Statistical analysis:
473 A.C., K.L. and S.O. Ka.L. and A.S-S. contributed equally to the study.

474

475

476 **Acknowledgments**

477 We thank the patients and healthy volunteers who have contributed to this study. We would
478 also like to thank medical students and hospital staff for assistance with patient sampling

479 and collection of clinical data, the Biomedicum BSL3 core facility, Karolinska Institutet and
480 Fredrika Hellgren for assistance with English editing. This work was supported by grants from
481 the Swedish Research Council, the Swedish Heart-Lung Foundation, the Bill & Melinda Gates
482 Foundation, the Knut and Alice Wallenberg Foundation through SciLifeLab and Karolinska
483 Institutet.
484

485 **References**

486

487 1. Gandhi RT, Lynch JB, and Del Rio C. Mild or Moderate Covid-19. *N Engl J Med*.

488 2020;383(18):1757-66.

489 2. Berlin DA, Gulick RM, and Martinez FJ. Severe Covid-19. *N Engl J Med*.

490 2020;383(25):2451-60.

491 3. Brodin P. Immune determinants of COVID-19 disease presentation and severity. *Nat*

492 *Med*. 2021;27(1):28-33.

493 4. Moghadas SM, Fitzpatrick MC, Sah P, Pandey A, Shoukat A, Singer BH, et al. The

494 implications of silent transmission for the control of COVID-19 outbreaks. *Proc Natl*

495 *Acad Sci U S A*. 2020.

496 5. Walls AC, Park YJ, Tortorici MA, Wall A, McGuire AT, and Veessler D. Structure,

497 Function, and Antigenicity of the SARS-CoV-2 Spike Glycoprotein. *Cell*.

498 2020;181(2):281-92 e6.

499 6. Wrapp D, Wang N, Corbett KS, Goldsmith JA, Hsieh CL, Abiona O, et al. Cryo-EM

500 structure of the 2019-nCoV spike in the prefusion conformation. *Science*.

501 2020;367(6483):1260-3.

502 7. Gaebler C, Wang Z, Lorenzi JCC, Muecksch F, Finkin S, Tokuyama M, et al. Evolution of

503 antibody immunity to SARS-CoV-2. *Nature*. 2021;591(7851):639-44.

504 8. Atyeo C, Fischinger S, Zohar T, Slein MD, Burke J, Loos C, et al. Distinct Early

505 Serological Signatures Track with SARS-CoV-2 Survival. *Immunity*. 2020;53(3):524-32

506 e4.

- 507 9. Gudbjartsson DF, Norddahl GL, Melsted P, Gunnarsdottir K, Holm H, Eythorsson E, et
508 al. Humoral Immune Response to SARS-CoV-2 in Iceland. *N Engl J Med*.
509 2020;383(18):1724-34.
- 510 10. Guthmiller JJ, Stovicek O, Wang J, Changrob S, Li L, Halfmann P, et al. SARS-CoV-2
511 Infection Severity Is Linked to Superior Humoral Immunity against the Spike. *mBio*.
512 2021;12(1):e02940-20.
- 513 11. Zhao J, Yuan Q, Wang H, Liu W, Liao X, Su Y, et al. Antibody Responses to SARS-CoV-2
514 in Patients With Novel Coronavirus Disease 2019. *Clin Infect Dis*. 2020;71(16):2027-
515 34.
- 516 12. Piccoli L, Park YJ, Tortorici MA, Czudnochowski N, Walls AC, Beltramello M, et al.
517 Mapping Neutralizing and Immunodominant Sites on the SARS-CoV-2 Spike Receptor-
518 Binding Domain by Structure-Guided High-Resolution Serology. *Cell*. 2020.
- 519 13. Zielinski CE, Corti D, Mele F, Pinto D, Lanzavecchia A, and Sallusto F. Dissecting the
520 human immunologic memory for pathogens. *Immunol Rev*. 2011;240(1):40-51.
- 521 14. Vincent JL, Moreno R, Takala J, Willatts S, De Mendonça A, Bruining H, et al. The
522 SOFA (Sepsis-related Organ Failure Assessment) score to describe organ
523 dysfunction/failure. On behalf of the Working Group on Sepsis-Related Problems of
524 the European Society of Intensive Care Medicine. *Intensive Care Med*.
525 1996;22(7):707-10.
- 526 15. Grissom CK, Brown SM, Kuttler KG, Boltax JP, Jones J, Jephson AR, et al. A modified
527 sequential organ failure assessment score for critical care triage. *Disaster Med Public
528 Health Prep*. 2010;4(4):277-84.

- 529 16. Falck-Jones S, Vangeti S, Yu M, Falck-Jones R, Cagigi A, Badolati I, et al. Functional
530 monocytic myeloid-derived suppressor cells increase in blood but not airways and
531 predict COVID-19 severity. *J Clin Invest.* 2021;131(6).
- 532 17. Hansen CB, Jarlhelt I, Perez-Alos L, Hummelshoj Landsy L, Loftager M, Rosbjerg A, et
533 al. SARS-CoV-2 Antibody Responses Are Correlated to Disease Severity in COVID-19
534 Convalescent Individuals. *J Immunol.* 2020.
- 535 18. Dan JM, Mateus J, Kato Y, Hastie KM, Yu ED, Faliti CE, et al. Immunological memory
536 to SARS-CoV-2 assessed for up to 8 months after infection. *Science.* 2021.
- 537 19. Rodda LB, Netland J, Shehata L, Pruner KB, Morawski PA, Thouvenel CD, et al.
538 Functional SARS-CoV-2-Specific Immune Memory Persists after Mild COVID-19. *Cell.*
539 2021;184(1):169-83 e17.
- 540 20. Juno JA, Tan HX, Lee WS, Reynaldi A, Kelly HG, Wragg K, et al. Humoral and
541 circulating follicular helper T cell responses in recovered patients with COVID-19. *Nat*
542 *Med.* 2020.
- 543 21. Rydzynski Moderbacher C, Ramirez SI, Dan JM, Grifoni A, Hastie KM, Weiskopf D, et
544 al. Antigen-Specific Adaptive Immunity to SARS-CoV-2 in Acute COVID-19 and
545 Associations with Age and Disease Severity. *Cell.* 2020.
- 546 22. Lynch KL, Whitman JD, Lacanienta NP, Beckerdite EW, Kastner SA, Shy BR, et al.
547 Magnitude and kinetics of anti-SARS-CoV-2 antibody responses and their relationship
548 to disease severity. *Clin Infect Dis.* 2020.
- 549 23. Robbiani DF, Gaebler C, Muecksch F, Lorenzi JCC, Wang Z, Cho A, et al. Convergent
550 antibody responses to SARS-CoV-2 in convalescent individuals. *Nature.* 2020.
- 551 24. Fahy JV, and Dickey BF. Airway mucus function and dysfunction. *N Engl J Med.*
552 2010;363(23):2233-47.

- 553 25. Wang YY, Harit D, Subramani DB, Arora H, Kumar PA, and Lai SK. Influenza-binding
554 antibodies immobilise influenza viruses in fresh human airway mucus. *Eur Respir J.*
555 2017;49(1).
- 556 26. Isho B, Abe KT, Zuo M, Jamal AJ, Rathod B, Wang JH, et al. Persistence of serum and
557 saliva antibody responses to SARS-CoV-2 spike antigens in COVID-19 patients. *Sci*
558 *Immunol.* 2020;5(52).
- 559 27. Reynolds HY. Immunoglobulin G and its function in the human respiratory tract.
560 *Mayo Clin Proc.* 1988;63(2):161-74.
- 561 28. Pakkanen SH, Kantele JM, Moldoveanu Z, Hedges S, Hakkinen M, Mestecky J, et al.
562 Expression of homing receptors on IgA1 and IgA2 plasmablasts in blood reflects
563 differential distribution of IgA1 and IgA2 in various body fluids. *Clin Vaccine Immunol.*
564 2010;17(3):393-401.
- 565 29. Sterlin D, Mathian A, Miyara M, Mohr A, Anna F, Claer L, et al. IgA dominates the
566 early neutralizing antibody response to SARS-CoV-2. *Sci Transl Med.* 2020.
- 567 30. Cervia C, Nilsson J, Zurbuchen Y, Valaperti A, Schreiner J, Wolfensberger A, et al.
568 Systemic and mucosal antibody responses specific to SARS-CoV-2 during mild versus
569 severe COVID-19. *J Allergy Clin Immunol.* 2020.
- 570 31. Staines HM, Kirwan DE, Clark DJ, Adams ER, Augustin Y, Byrne RL, et al. Dynamics of
571 IgG seroconversion and pathophysiology of COVID-19 infections. *medRxiv.* 2020.
- 572 32. Sealy R, Webby RJ, Crumpton JC, and Hurwitz JL. Differential localization and function
573 of antibody-forming cells responsive to inactivated or live-attenuated influenza virus
574 vaccines. *Int Immunol.* 2013;25(3):183-95.
- 575 33. Rudraraju R, Surman S, Jones B, Sealy R, Woodland DL, and Hurwitz JL. Phenotypes
576 and functions of persistent Sendai virus-induced antibody forming cells and CD8+ T

- 577 cells in diffuse nasal-associated lymphoid tissue typify lymphocyte responses of the
578 gut. *Virology*. 2011;410(2):429-36.
- 579 34. Surman SL, Rudraraju R, Sealy R, Jones B, and Hurwitz JL. Vitamin A deficiency
580 disrupts vaccine-induced antibody-forming cells and the balance of IgA/IgG isotypes
581 in the upper and lower respiratory tract. *Viral Immunol*. 2012;25(4):341-4.
- 582 35. Surman SL, Jones BG, Sealy RE, Rudraraju R, and Hurwitz JL. Oral retinyl palmitate or
583 retinoic acid corrects mucosal IgA responses toward an intranasal influenza virus
584 vaccine in vitamin A deficient mice. *Vaccine*. 2014;32(22):2521-4.
- 585 36. Krammer F. The human antibody response to influenza A virus infection and
586 vaccination. *Nat Rev Immunol*. 2019;19(6):383-97.
- 587 37. Su F, Patel GB, Hu S, and Chen W. Induction of mucosal immunity through systemic
588 immunization: Phantom or reality? *Hum Vaccin Immunother*. 2016;12(4):1070-9.
- 589 38. Or-Guil M, Wittenbrink N, Weiser AA, and Schuchhardt J. Recirculation of germinal
590 center B cells: a multilevel selection strategy for antibody maturation. *Immunol Rev*.
591 2007;216:130-41.
- 592 39. Lycke NY, and Bemark M. The regulation of gut mucosal IgA B-cell responses: recent
593 developments. *Mucosal Immunol*. 2017;10(6):1361-74.
- 594 40. Corbett KS, Flynn B, Foulds KE, Francica JR, Boyoglu-Barnum S, Werner AP, et al.
595 Evaluation of the mRNA-1273 Vaccine against SARS-CoV-2 in Nonhuman Primates. *N*
596 *Engl J Med*. 2020;383(16):1544-55.
- 597 41. Corbett KS, Nason MC, Flach B, Gagne M, O'Connell S, Johnston TS, et al. Immune
598 Correlates of Protection by mRNA-1273 Immunization against SARS-CoV-2 Infection
599 in Nonhuman Primates. *bioRxiv*. 2021:2021.04.20.440647.

- 600 42. Krammer F, Srivastava K, Alshammary H, Amoako AA, Awawda MH, Beach KF, et al.
601 Antibody Responses in Seropositive Persons after a Single Dose of SARS-CoV-2 mRNA
602 Vaccine. *N Engl J Med*. 2021;384(14):1372-4.
- 603 43. Saadat S, Rikhtegaran Tehrani Z, Logue J, Newman M, Frieman MB, Harris AD, et al.
604 Binding and Neutralization Antibody Titers After a Single Vaccine Dose in Health Care
605 Workers Previously Infected With SARS-CoV-2. *JAMA*. 2021;325(14):1467-9.
- 606 44. Goel RR, Apostolidis SA, Painter MM, Mathew D, Pattekar A, Kuthuru O, et al. Distinct
607 antibody and memory B cell responses in SARS-CoV-2 naive and recovered individuals
608 following mRNA vaccination. *Sci Immunol*. 2021;6(58).
- 609 45. Levi R, Azzolini E, Pozzi C, Ubaldi L, Lagioia M, Mantovani A, et al. A cautionary note
610 on recall vaccination in ex-COVID-19 subjects. *medRxiv*. 2021:2021.02.01.21250923.
- 611 46. Samanovic MI, Cornelius AR, Wilson JP, Karmacharya T, Gray-Gaillard SL, Allen JR, et
612 al. Poor antigen-specific responses to the second BNT162b2 mRNA vaccine dose in
613 SARS-CoV-2-experienced individuals. *medRxiv*. 2021:2021.02.07.21251311.
- 614 47. Planas D, Bruel T, Grzelak L, Guivel-Benhassine F, Staropoli I, Porrot F, et al.
615 Sensitivity of infectious SARS-CoV-2 B.1.1.7 and B.1.351 variants to neutralizing
616 antibodies. *Nat Med*. 2021.
- 617 48. Mades A, Chellamathu P, Lopez L, Kojima N, MacMullan MA, Denny N, et al.
618 Detection of persistent SARS-CoV-2 IgG antibodies in oral mucosal fluid and upper
619 respiratory tract specimens following COVID-19 mRNA vaccination. *medRxiv*.
620 2021:2021.05.06.21256403.
- 621 49. Intensivvårdsregistret S. SIR:s riktlinje för registrering av SOFA. .
622 <https://www.icuregswe.org/globalassets/riktlinjer/sofa.pdf>.

- 623 50. Charlson ME, Pompei P, Ales KL, and MacKenzie CR. A new method of classifying
624 prognostic comorbidity in longitudinal studies: development and validation. *J Chronic*
625 *Dis.* 1987;40(5):373-83.
- 626 51. Grifoni A, Weiskopf D, Ramirez SI, Mateus J, Dan JM, Moderbacher CR, et al. Targets
627 of T Cell Responses to SARS-CoV-2 Coronavirus in Humans with COVID-19 Disease
628 and Unexposed Individuals. *Cell.* 2020;181(7):1489-501 e15.
- 629 52. Song G, He WT, Callaghan S, Anzanello F, Huang D, Ricketts J, et al. Cross-reactive
630 serum and memory B cell responses to spike protein in SARS-CoV-2 and endemic
631 coronavirus infection. *bioRxiv.* 2020.
- 632
- 633
- 634

635 **Table 1.** Clinical characterization of the SARS-CoV-2 infected cohort

Peak disease severity	Mild		Moderate		Severe		Fatal
	1	2	3	4	5*	6*	7
Resp. SOFA score	0	0	1	2	3	4	
Admitted (Y/N)	N	Y	Y	Y	Y	Y	Y
PFI (kPa)	> 53	> 53	< 53	< 40	< 27	< 13	-
SFI	> 400	> 400	≤ 400	≤ 315	≤ 235	< 150	
No. of individuals (%)	13 (8.8)	6 (4.1)	10 (6.8)	48 (33)	19 (13)	39 (27)	12 (8.2)
Age, mean (Range)	44 (24-72)	60 (41-72)	56 (46-78)	55 (24-76)	57 (42-74)	61 (25-77)	66 (52-78)
Male (%)	5 (38)	2 (33)	6 (60)	38 (79)	15 (79)	34 (87)	9 (75)
Days from symptoms to admission – median (Range)	-	10 (0-14)	8.5 (4-14)	10 (3-21)	7 (2-14)	10 (2-35)	7 (1-28)
Days from symptoms to inclusion “Acute” – median (Range)	9 (3-44)	11 (0-20)	13.5 (6-18)	13 (4-32)	21 (5-40)	22 (7-54)	13 (8-44)
Days from symptoms to 3-Mo follow-up – median (Range)	102 (88-136)	99,5 (82-103)	112 (81-127)	109 (46-155)	109 (48-130)	120 (53-168)	-
Days from symptoms to 8-Mo follow-up – median (Range)	232 (187-264)	238 (212-250)	245 (227-303)	247 (233-314)	241 (220-270)	254 (224-344)	-
VL (Ct value) median (Range)	27.5 (40-14)	25.0 (29-14)	26.7 (36-15)	26.8 (36-12)	25.8 (36-19)	24.0 (37-14)	20.5 (32-13)
CCI, mean (SD)	1 (2)	2 (1)	1 (1)	2 (2)	2 (1)	2 (1)	3 (1)
BMI, mean (SD)	24.1 (4.5)	25.1 (2.2)	26.0 (3.2)	30.3 (4.2)	29.2 (5.3)	28.6 (4.7)	28.6 (2.4)
Hypertension (%)	1 (8.3)	0 (0)	2 (20)	20 (42)	8 (42)	15 (38)	9 (75)
Diabetes (%)	2 (17)	0 (0)	1 (10)	14 (29)	5 (26)	9 (23)	3 (25)
Current smokers (%)	0 (0)	0 (0)	2 (20)	5 (11)	1 (5.3)	2 (5.3)	0 (0)
ACE-I (%)	0 (0)	0 (0)	0 (0)	5 (10)	1 (5.3)	4 (10)	1 (9.1)
IS drugs (%)	1 (7.7)	0 (0)	0 (0)	4 (8.3)	2 (11)	5 (13)	1 (8.3)

636 Resp. SOFA: Respiratory Sequential Organ Failure Assessment

637 PFI: PaO₂/FiO₂-index

638 SFI: SpO₂/FiO₂-index

639 VL: Viral Load

640 CCI: Charlson comorbidity index

641 BMI: body mass index

642 ACE-I: angiotensin converting enzyme-inhibitors

643 IS: immunosuppressive

644 *Requires mechanical ventilation

645

646 **Table 2.** Peak disease severity, age, gender and longitudinal sampling timeline of patients

647 vaccinated against SARS-CoV-2.

Peak disease severity	Days from onset of symptoms				Days from		Vaccine
	Acute	3 Mo	8 Mo	Vacc.	Prime	Boost	
1	24	129	240	338	7		AstraZeneca*
1	9	113	266	308	7		AstraZeneca*
3	15	90	250	358	7		AstraZeneca*
3	14	127	238	322	11		AstraZeneca*
4	10	100	254	345	16	13	Pfizer-BioNTec**
4	23	84	252	339	9		AstraZeneca*
6	22	98	244	329	8	8	Pfizer-BioNTec**
6	34	139	260	308		7	Pfizer-BioNTec**
6	38	144	301	324	14	28	Pfizer-BioNTec**
6	43	142	254	339	11	13	Pfizer-BioNTec**
6	21	124	226	270		21	Pfizer-BioNTec**
6	30	92		286	8	10	Moderna***

648 M=male, F=female

649 * Vaxzevria (AstraZeneca)

650 ** Comirnaty (Pfizer-BioNTec)

651 *** mRNA-1273 (Moderna)

652

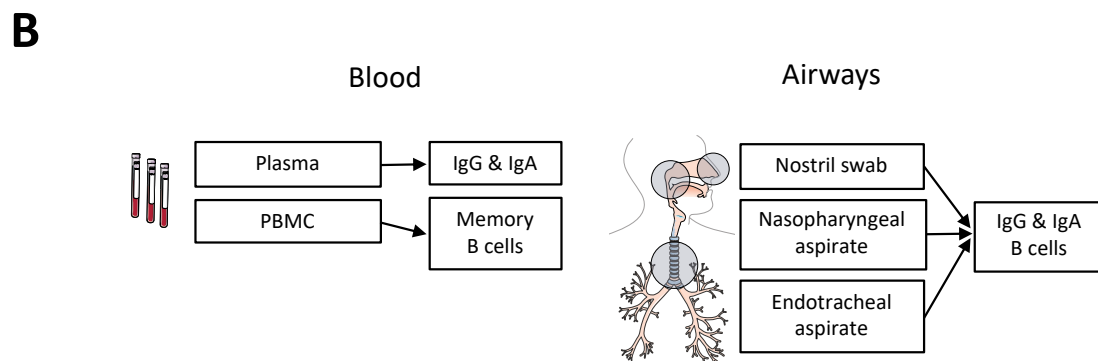
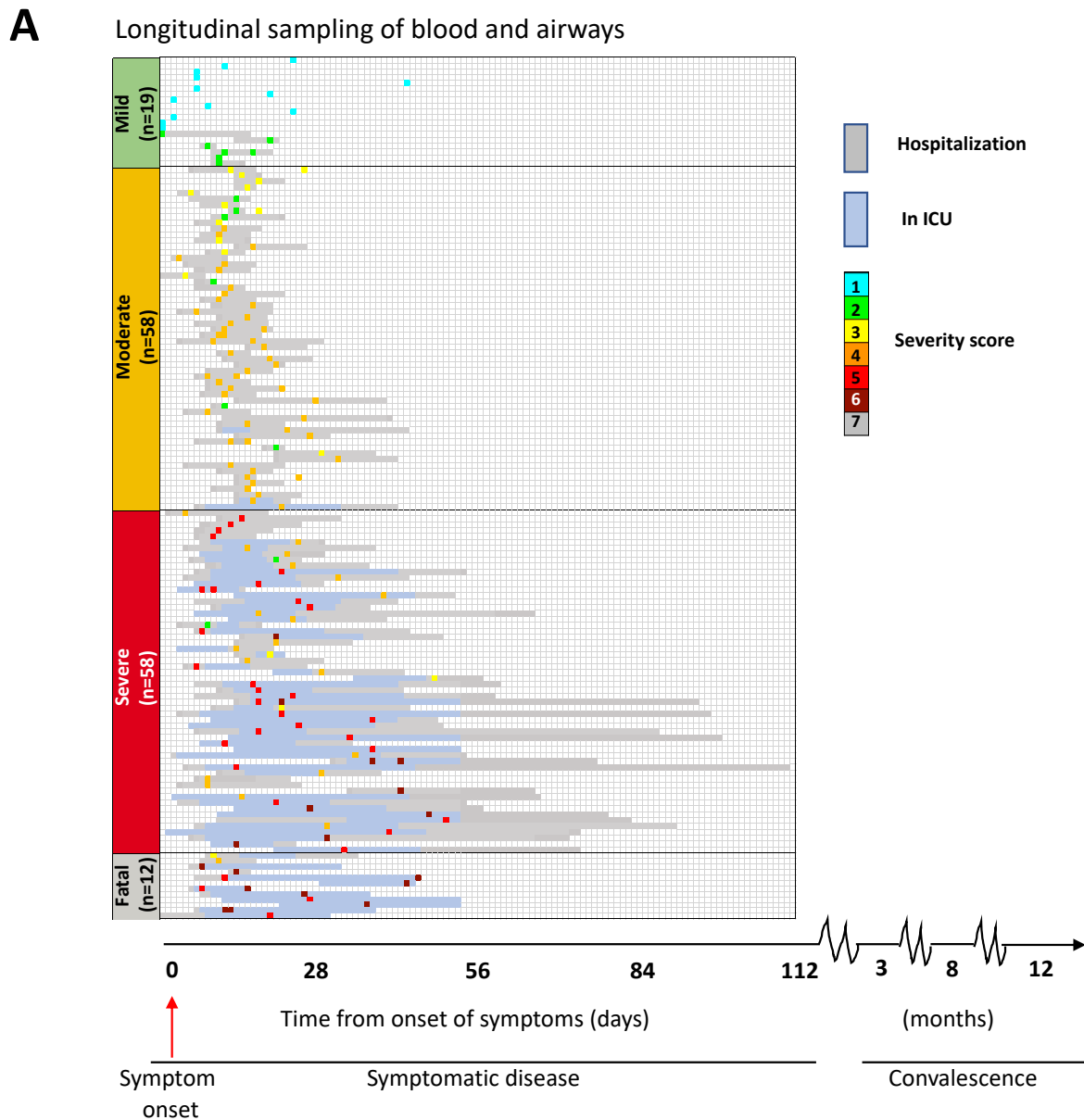


Figure 1. Study and sampling overview. (A) Overview of study cohort and controls, timeline of longitudinal sampling, hospital admission/discharge, level of care and outcome for each patient. Patients are group based on peak disease severity (PDS); mild (PDS 1 and 2), moderate (PDS 3 and 4), severe (PDS 5 and 6) and fatal (PDS 7). Individual inclusion sample for each patient is color-coded based on disease severity at the time of sampling. **(B)** Overview of the anatomical compartments analyzed, and the measurements performed.

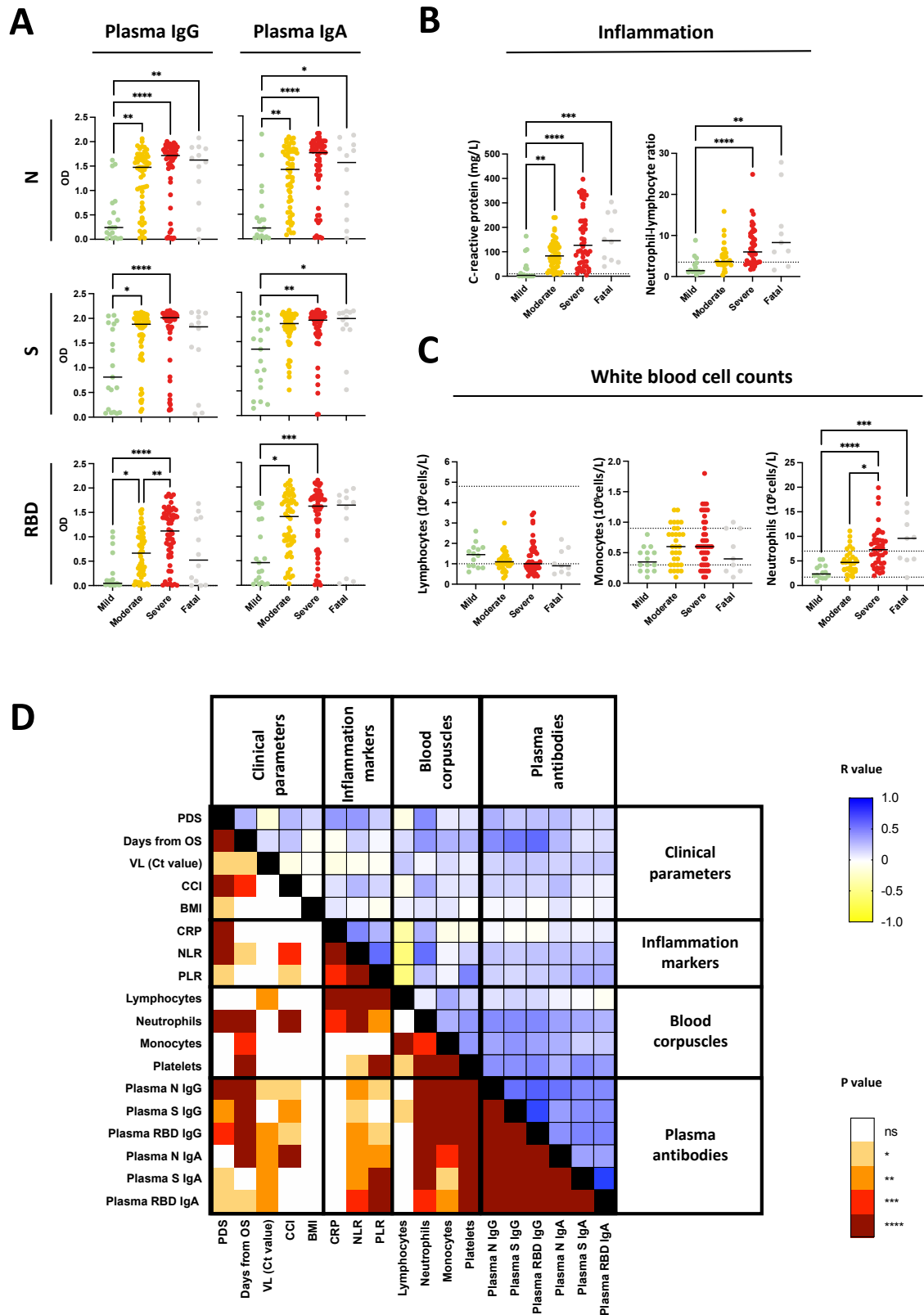


Figure 2. Systemic antibody responses, inflammation markers and other clinical parameters in relation to COVID-19 severity during acute disease. (A) Plasma IgG and IgA responses against N, S and RBD are shown together with the levels of (B) C-reactive protein and the neutrophil-lymphocyte ratio as a measure of systemic inflammation and with (C) the levels of lymphocytes, monocytes and neutrophils. Black lines indicate medians. Differences were assessed using Kruskal -Wallis with Dunn's multiple comparisons test and considered statistically significant at $p < 0.05$. ** $p < 0.01$, *** $p < 0.001$, **** $p < 0.0001$. The dashed lines indicate the normal thresholds or range values. (D) Correlation matrix summarizing the interrelationship observed between the clinical parameters, inflammation markers, blood corpuscles and data from systemic antibody levels measured during acute disease as indicated. The P and R values (Spearman) are shown separately in the mirrored halves of the matrix and have been color-coded as indicated.

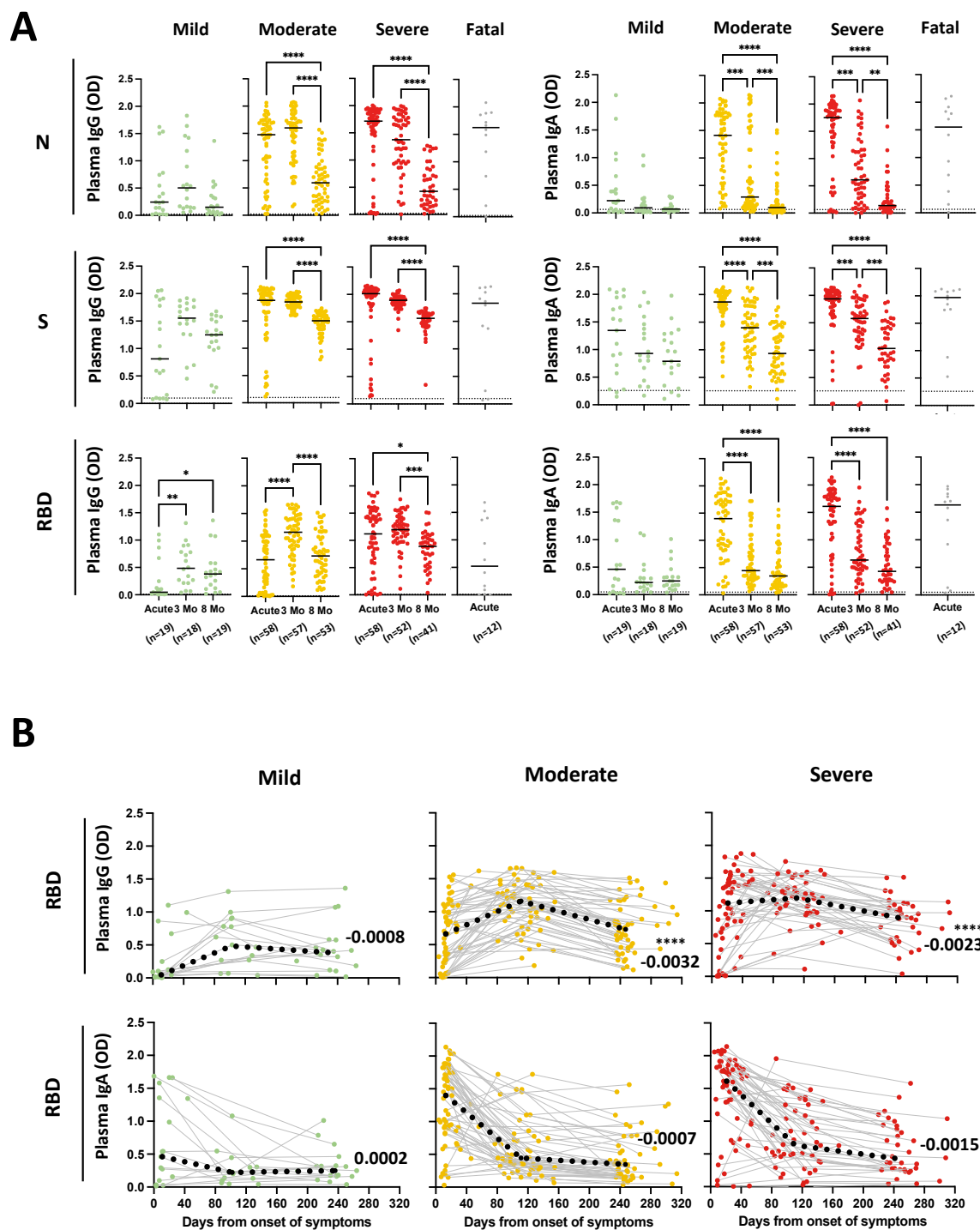


Figure 3. Longitudinal systemic antibody responses across COVID-19 severity from acute disease up to 8 months from symptom onset. (A) Individual levels of plasma IgG and IgA (from left to right) in SARS-CoV-2 infected individuals with different peak disease severity (PDS). Black lines indicate medians and dotted lines indicate the average background level from pre-pandemic healthy controls. Mann-Whitney U was used to compare the groups and considered statistically significant at $p < 0.05$. ** $p < 0.01$, *** $p < 0.001$, **** $p < 0.0001$. **(B)** Compiled patient-matched longitudinal data from acute, 3-month- and 8-month follow-ups are shown for the levels of plasma IgG and plasma IgA against RBD. For each chart, the black dotted pattern refers to the median value whereas the grey lines connect data points from the same individuals. The number in each graph indicates the slope of the line connecting the median OD values at 3- and 8-months sampling as an estimate of the antibody decay. The asterisks indicate the statistical significance, calculated as per in Figure 3A.

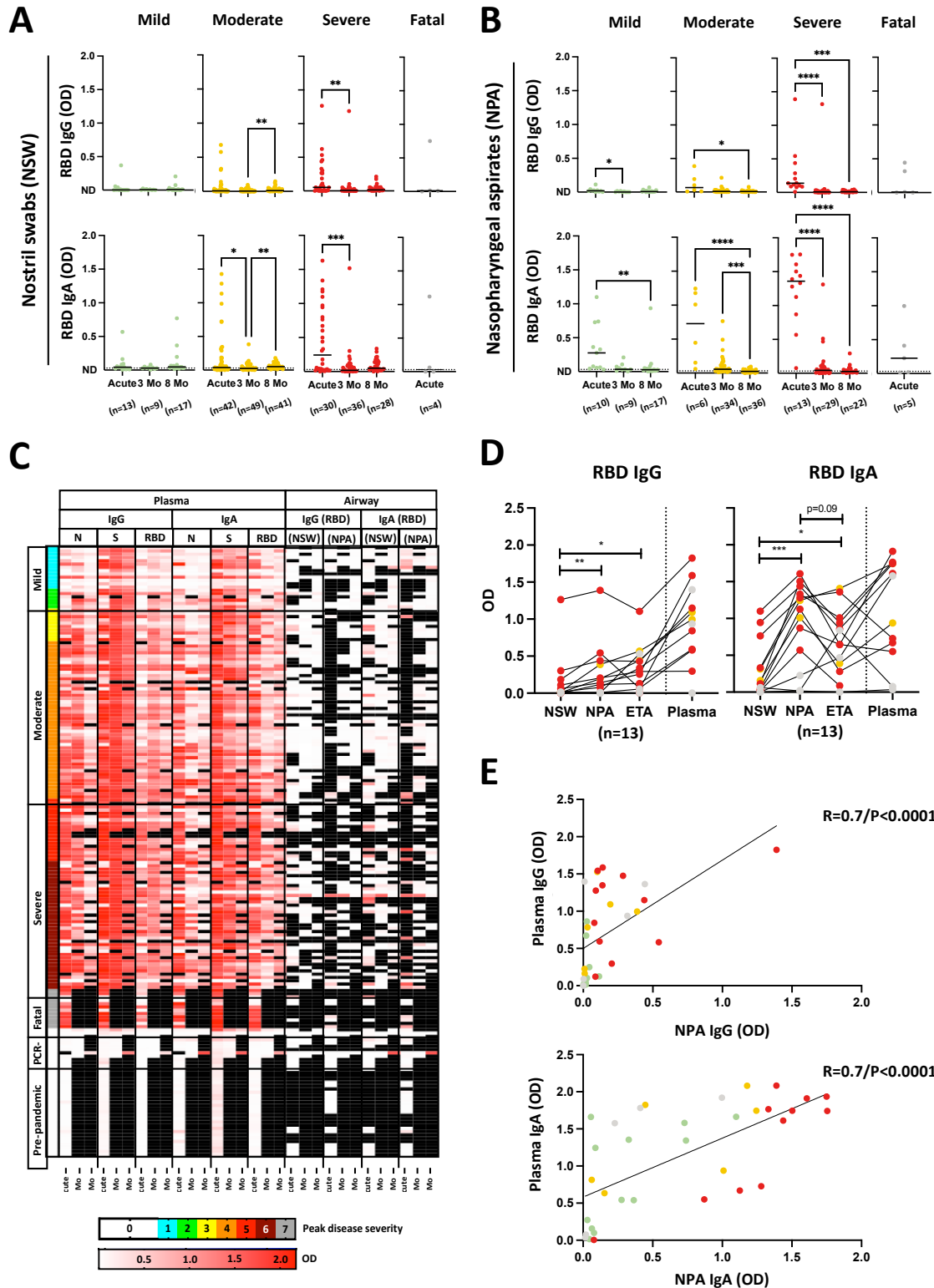


Figure 4. Longitudinal airway antibody responses to RBD across COVID-19 severity from acute disease up to 8 months from symptom onset. Levels of IgG and IgA to RBD in (A) nostrils swabs (NSW) and (B) nasopharyngeal aspirates (NPA). The black lines indicate median values. Mann-Whitney U was used to compare the group and considered statistically significant at $p < 0.05$. * $p < 0.05$ ** $p < 0.01$, *** $p < 0.001$, **** $p < 0.0001$. (C) Heat map generated grouping patients according to PDS showing acute and convalescent IgG and IgA titers against N, S and RBD (plasma) and RBC (NSW, NPA and ETA) for each patient. The heat map also includes data from PPHC and PCR-individuals (indicated with PDS 0). Missing data and not available samples are shown in black. (D) Comparison of the levels of RBD IgG/A in patient-matched NSW, NPA, endotracheal aspirates (ETA) and plasma collected at the same time point. (E) Spearman correlation for NPA versus plasma immunoglobulins against the RBD during acute disease. The black lines connect data points from the same individuals. Wilcoxon test was used to compare the groups separately and considered statistically significant at $p < 0.05$. **** $p < 0.0001$. In A) the line overlaps with not detected (ND) for IgG levels.

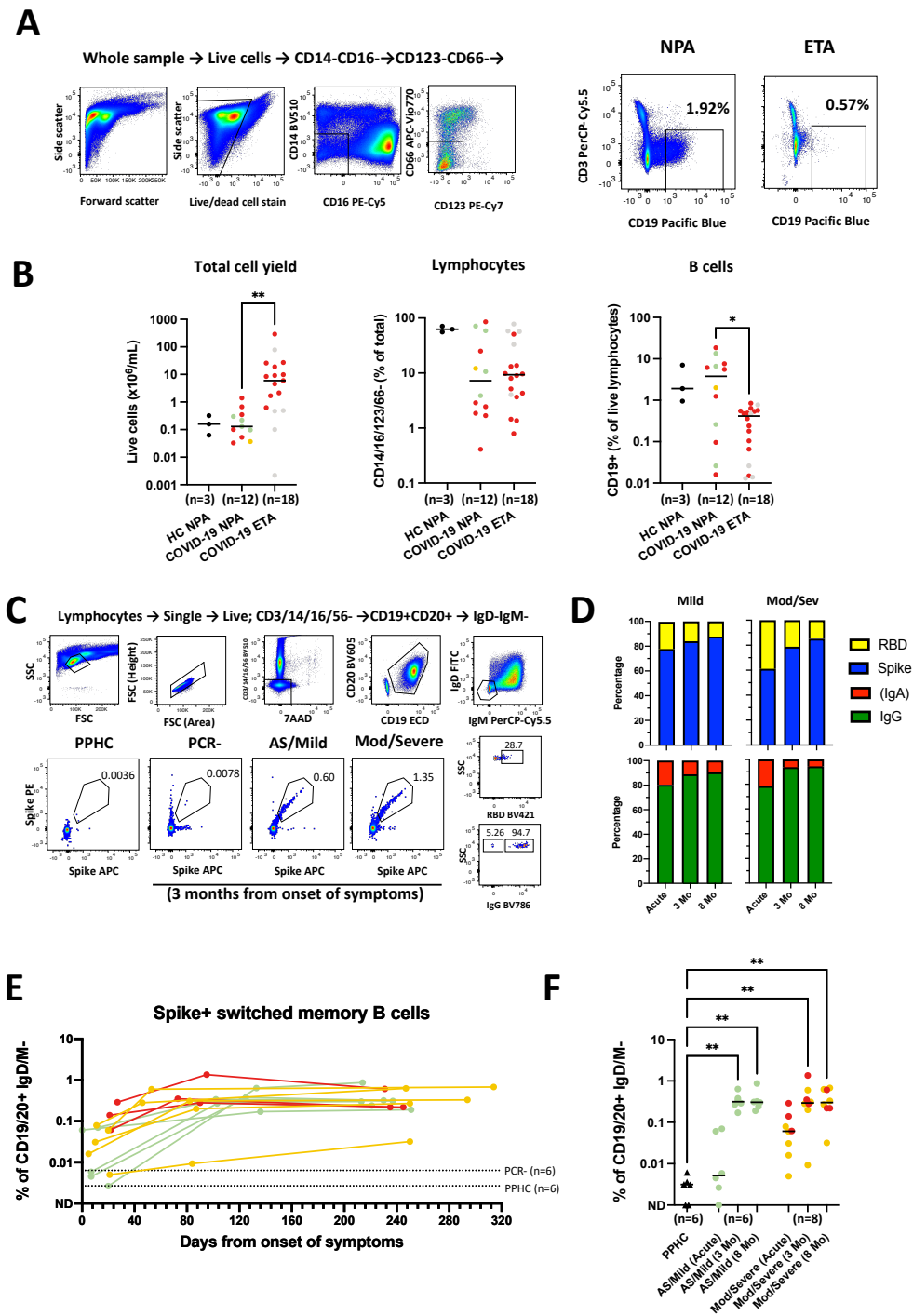
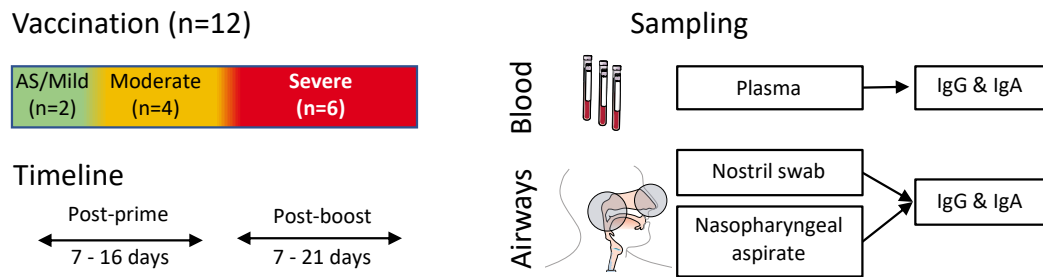
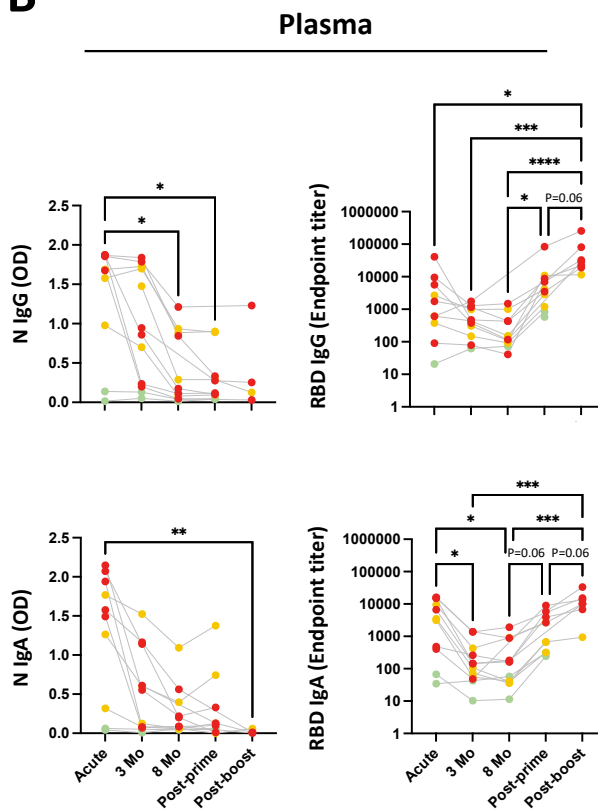


Figure 5. Assessment of frequencies of B cells in the respiratory tract and of circulating S-specific memory B cells. (A) Representative example with gating strategy for the identification of lymphocytes (identified as negative for CD14/16/123/66) and of total B cells (CD3-CD19+) in respiratory NPA and ETA samples. **(B)** Levels of lymphocytes and of total B cells in NPA and ETA in a subset of patients alongside with NPA from healthy controls. Mann-Whitney test was used to compare the groups and considered statistically significant at $p < 0.05$. ** $p < 0.01$. **(C)** Representative examples with gating strategy of SARS-Cov-2 S-specific memory B cells from one pre-pandemic healthy control, 3-month follow-up samples from one SARS-CoV-2 PCR- individual and one mild and one moderate/severe COVID-19 patient. Further characterization of S-positive memory B cells on RBD binding and B cell isotype (IgG+ or IgA+ assumed to correspond to IgD-IgM-IgG- B cells). **(D)** Bar charts show the cumulative proportion (frequency) of Spike (blue) and RBD (yellow) specific memory B cell as well as the proportion of IgG (green) vs. IgA (red) isotypes among the Spike specific memory B cells in longitudinal samples from mild ($n=6$) and moderate/severe ($n=8$) COVID-19 patients. **(E)** Frequencies of S-specific memory B cells in matched acute (filled) and 3-month follow-up (filled with black lining) PBMCs in relation to days in the subset of individuals analyzed color-coded according to PDS. Dotted lines indicate the average background staining from PCR- and PPHC. **(F)** Levels of circulating Spike+ switched memory B cells during acute disease and convalescence in the subset of patients analyzed, as well as PPHC, color-coded according to PDS. Circles with black lining refer to data during the convalescent phase. Black triangles symbolize the PPHC. Differences were assessed using Kruskal-Wallis with Dunn's multiple comparisons test and considered statistically significant at $p < 0.05$. ** $p < 0.01$.

A



B



C

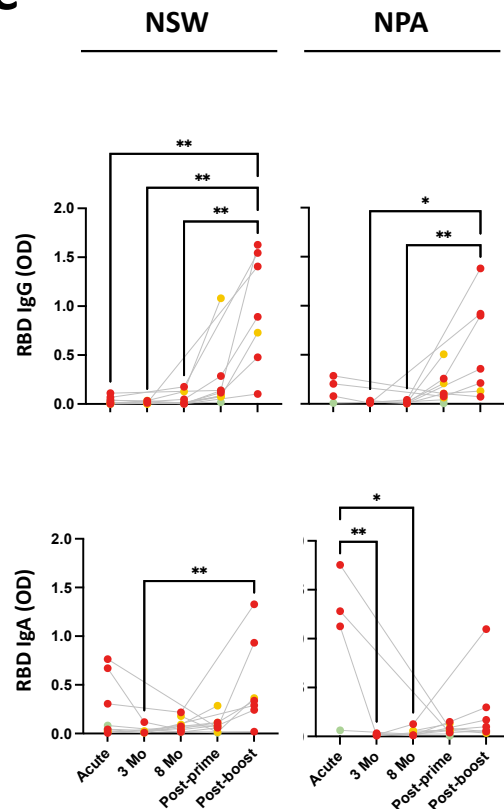


Figure 6. Vaccination and systemic and airway antibody level rebound. (A) Overview of vaccinated patients with respect with peak disease severity during COVID-19 and sampling timeline after prime and boost. The anatomical compartments analyzed and the measurements performed are also shown. Compiled patient-matched longitudinal data from acute, 3-month- and 8-month follow-ups are shown together with data from after prime and after boost for (B) the levels of IgG and IgA against N and RNB for plasma and (C) against RBD for NSW and NPA. The grey lines connect data points from the same individuals. Data are color-coded according to peak disease severity during COVID-19 and differences were assessed using Kruskal -Wallis with Dunn's multiple comparisons test and considered statistically significant at $p < 0.05$. ** $p < 0.01$, *** $p < 0.001$, **** $p < 0.0001$.