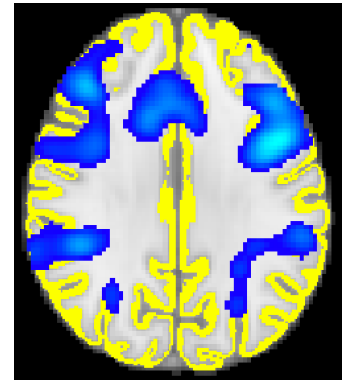
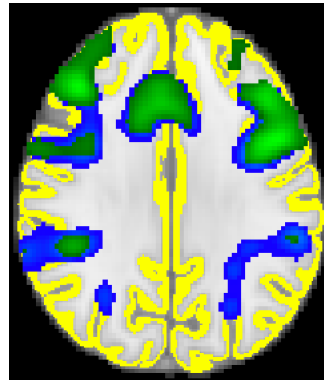
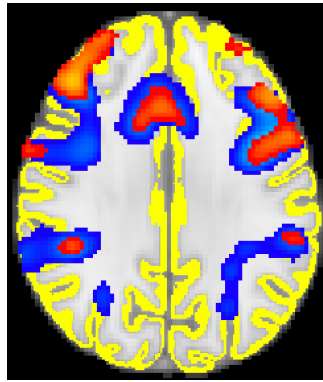
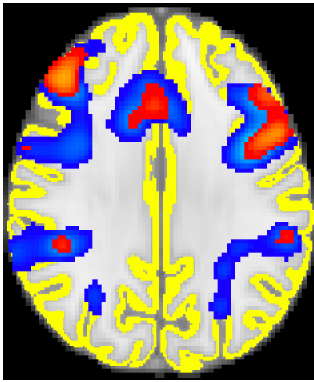


Table S1: Statistical maps of activation for easy and hard levels for the one back task. Maps shown are for those instances where early stopping occurred and there is < 50% overlap between the active voxels of the early stopped scans and the full duration scan, See Table 2C and D in main document. 70% and 80% of voxels classified active and non-active are shown side by side for comparison. Full duration active voxels are shown in blue for all time points for easy reference. 2-block first stage result is overlaid in red, 4-block first stage result is in green. Slice number is given in MNI space. Grey matter is highlighted in yellow.

Sub	Level	Slice	2-Blocks (red) Z 70%	2-Blocks (red) 80%	4-Blocks (green) 70%	4-Blocks (green) 80%	Full duration (blue)
Control							
3	Easy	52	Scan 89 	Scan 104 	Scan 155 	Scan 171 	
	Hard	52	Same as 80%	Scan 79 	Scan 155 	Scan 200 	
4	Hard	51	Scan 79 	Scan 89 	Scan 155 	No early stopping 	

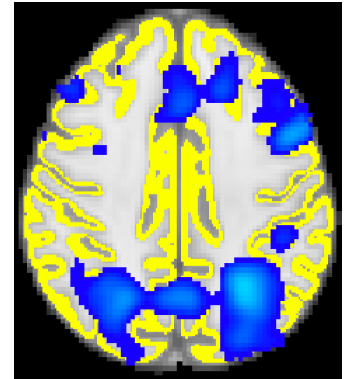
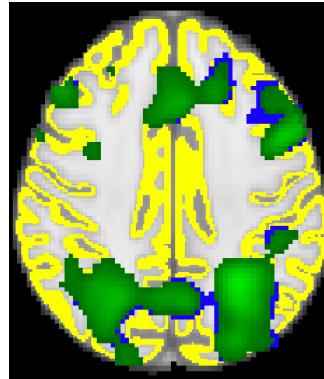
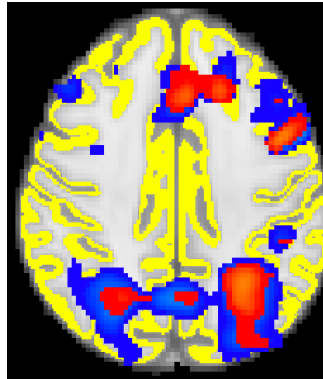


5 Hard 56 Same as 80%

Scan 79

Scan 155

No early stopping

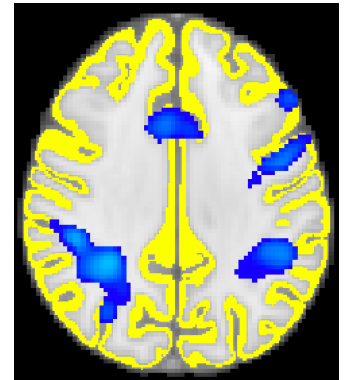
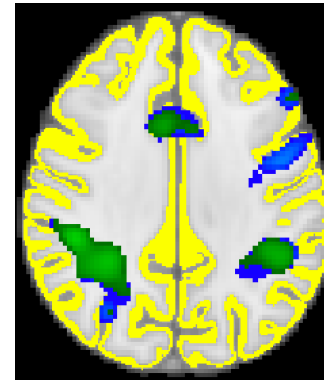
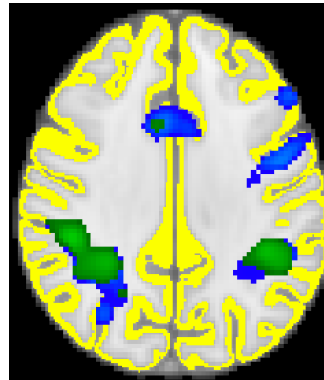
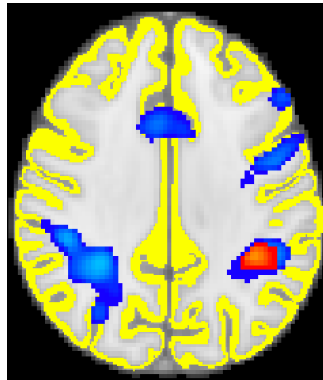


6 Easy 53 Same as 80%

Scan 79

Scan 155

Scan 180

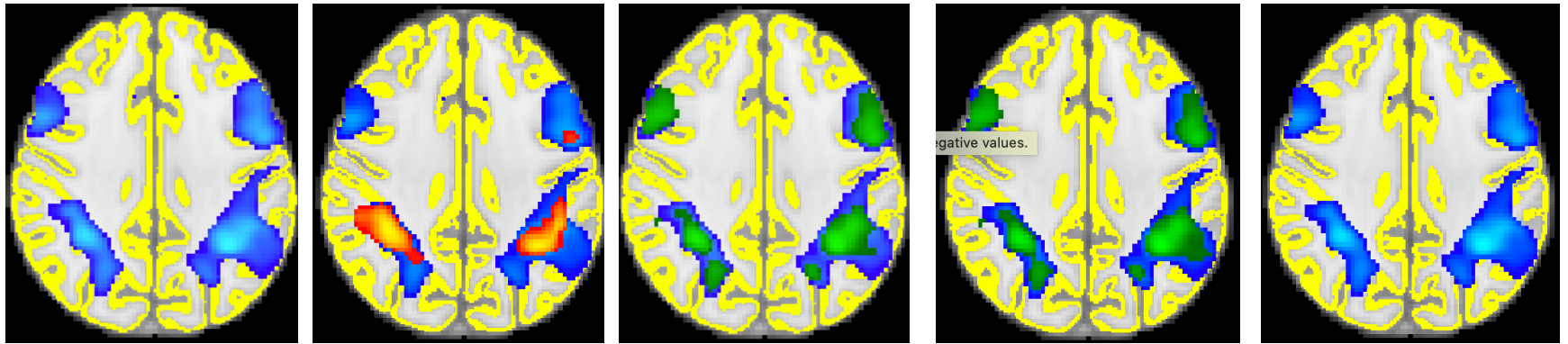


7 Easy 54 Scan 79

Scan 112

Scan 155

Scan 164



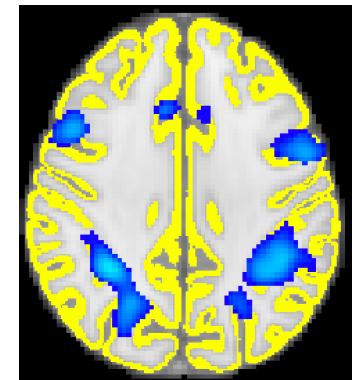
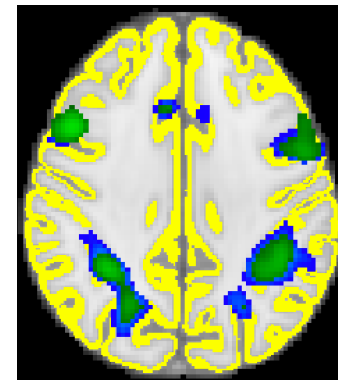
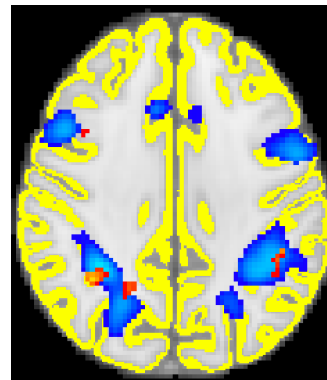
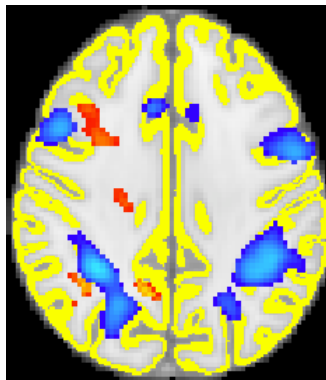
Hard 54

Scan 80

Scan 95

Same as 80%

Scan 155



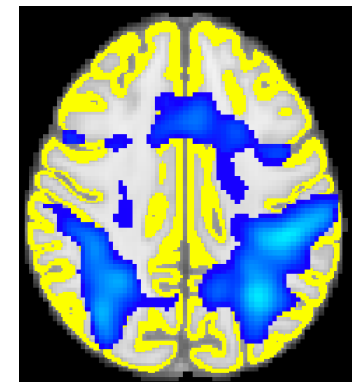
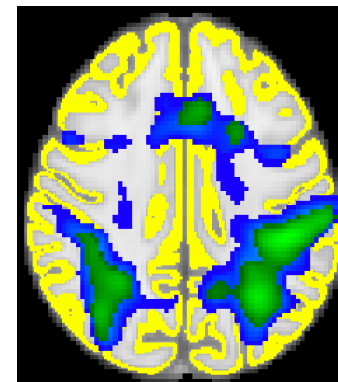
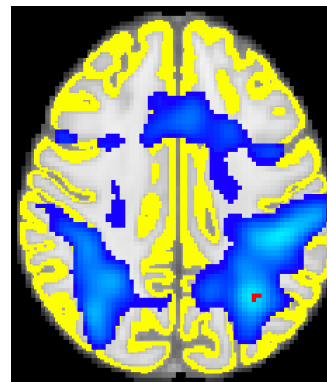
9 Easy 55

Same as 80%

Scan 79

Same as 80%

Scan 155



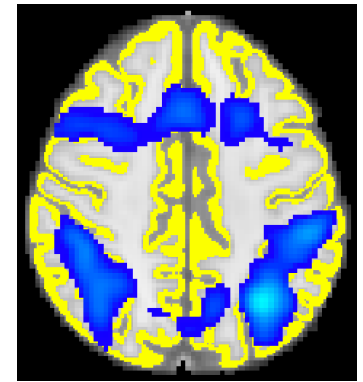
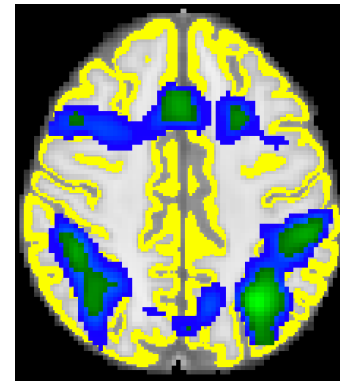
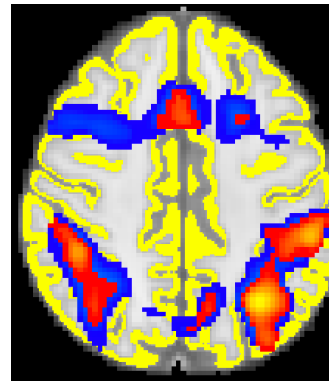
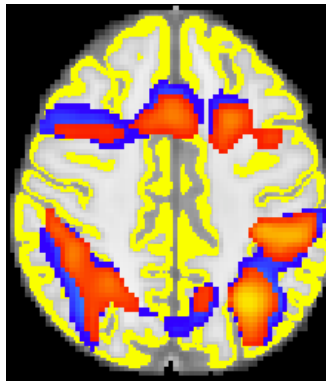
Hard 58

Scan 79

Scan 86

Same as 80%

Scan 155



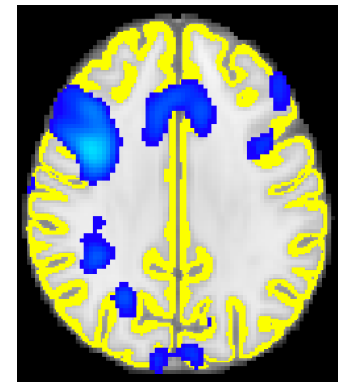
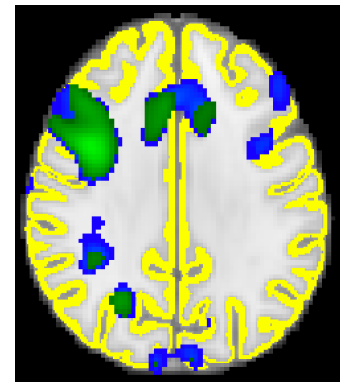
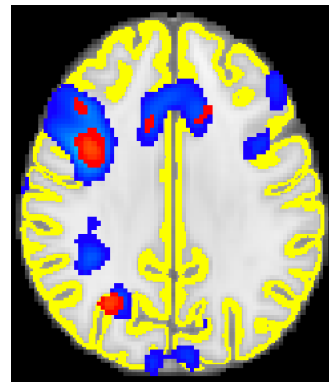
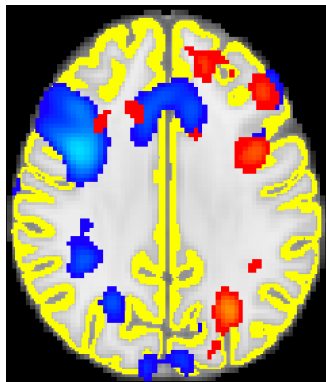
10 Hard 52

Scan 79

Scan 98

Same as 80%

Scan 155



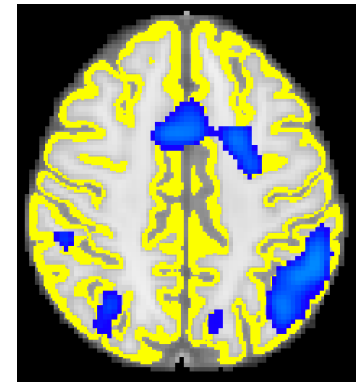
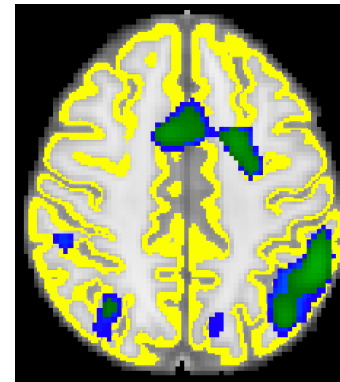
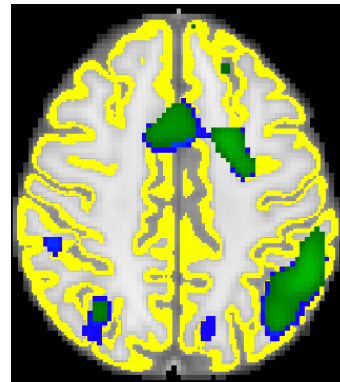
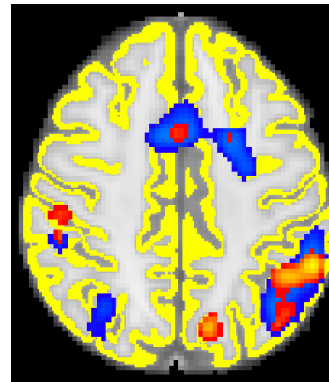
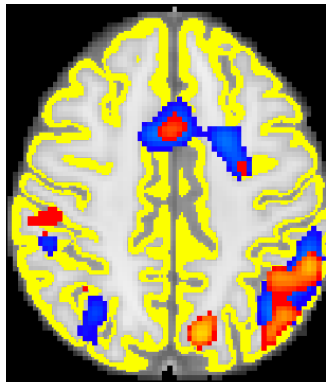
11 Easy 58

Scan 79

Scan 89

Scan 155

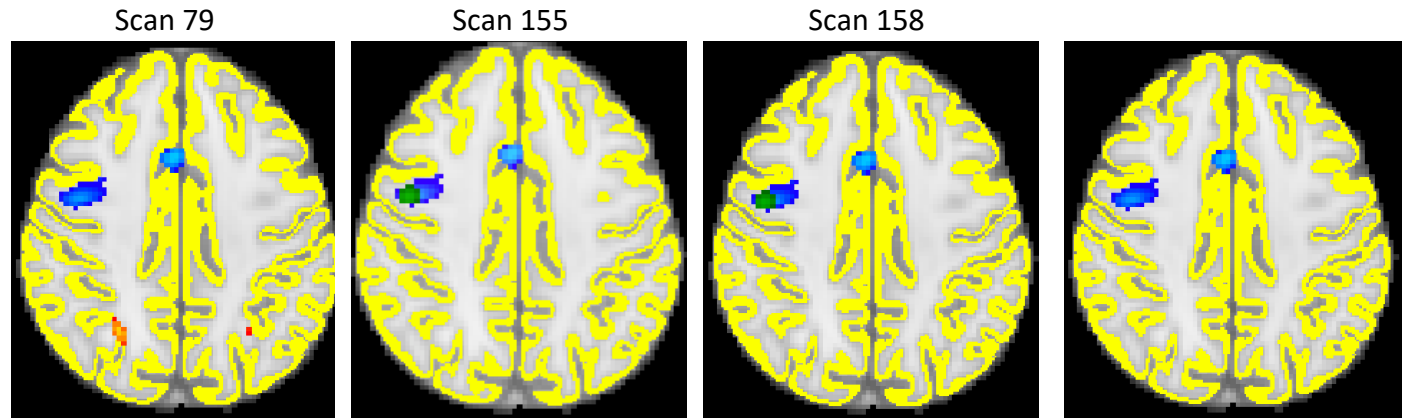
Scan 186



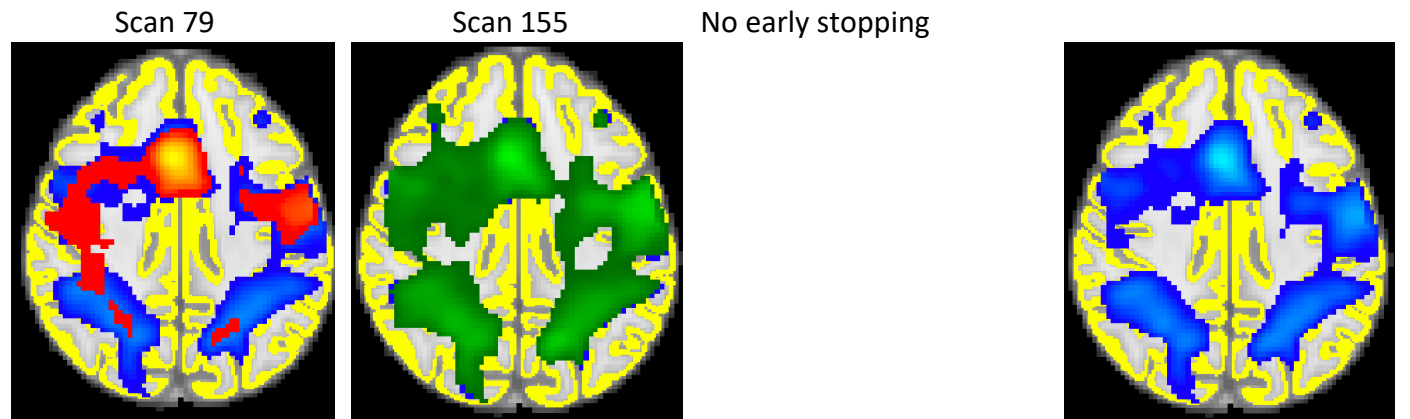
EPT

13 Easy
Hard 57 Same as 80%

Virtually no overlap to show visually

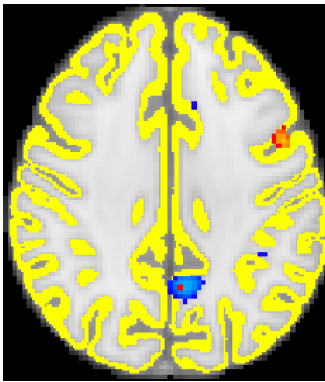


14 Hard 56 Same as 80%

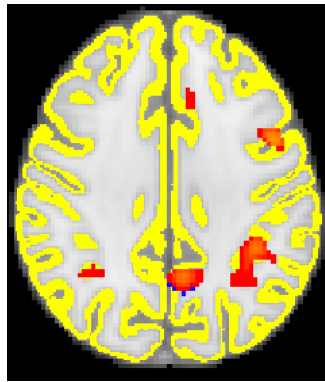


15 Easy 54 Scan 107

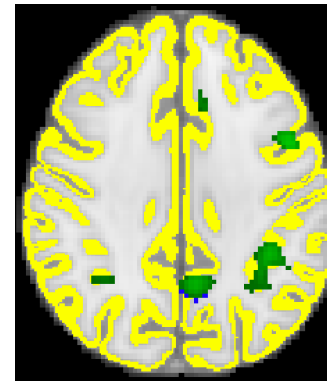
Scan 154 Same as 80% Scan 155



Scan 79



Scan 87

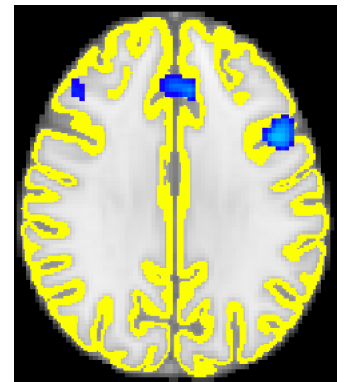
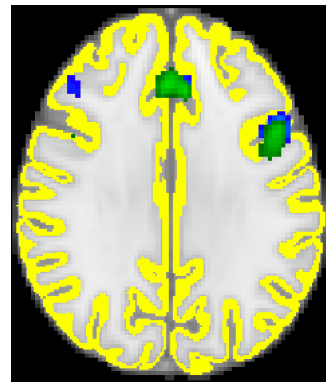
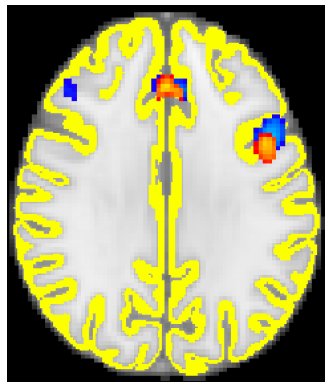
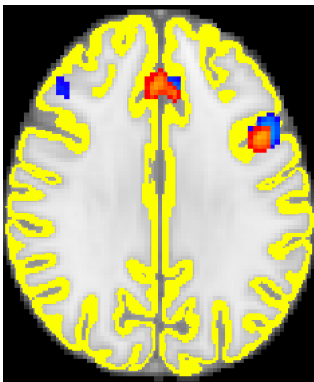


Scan 155



No early stopping

Hard 51



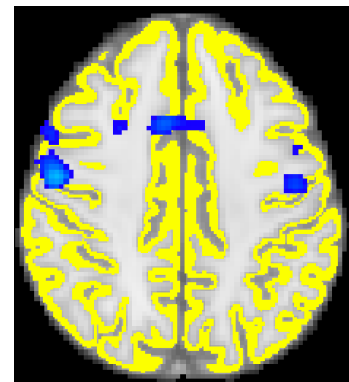
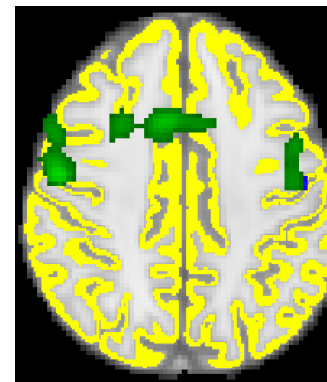
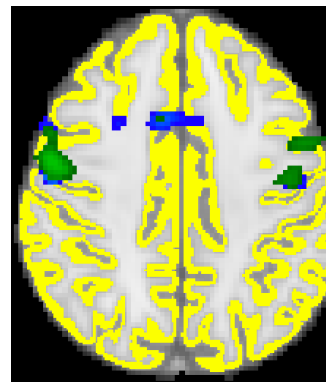
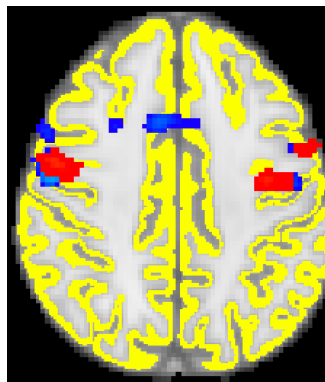
17 Easy 57

Same as 80%

Scan 79

Scan 155

Scan 216



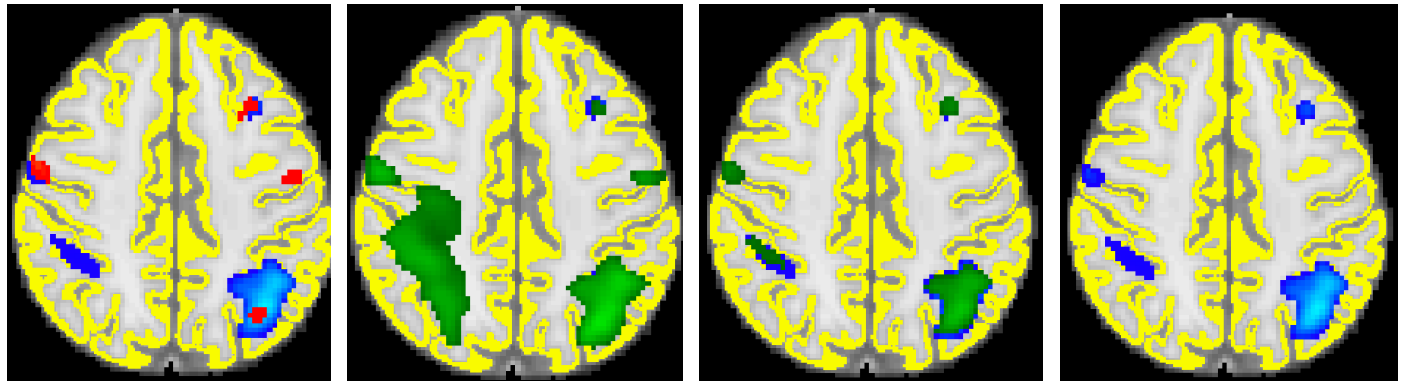
Hard 58

Same as 80%

Scan 79

Scan 155

Scan 218

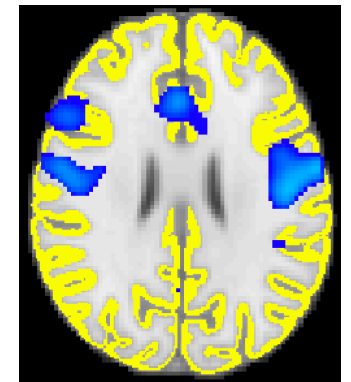
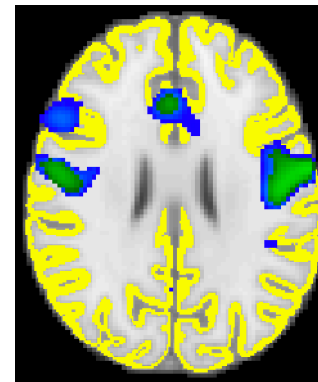
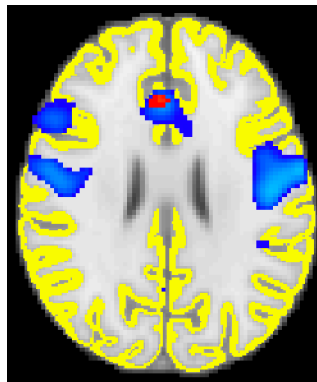


18 Easy 49 Same as 80%

Scan 79

Same as 80%

Scan 155

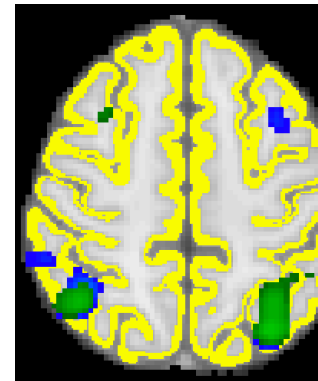
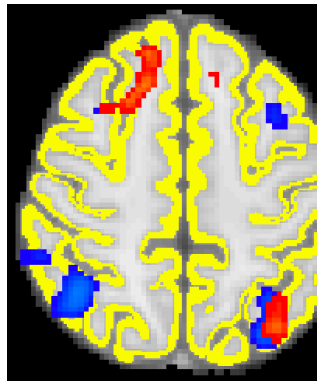


19 Hard 61 Same as 80%

Scan 79

Same as 80%

Scan 155



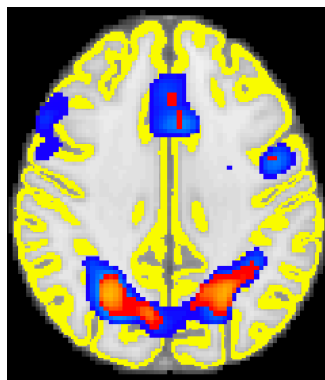
20 Easy 54 Same as 80%

Scan 79

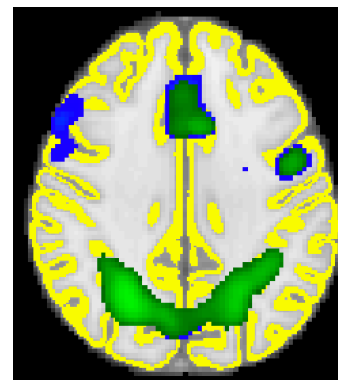
Same as 80%

Scan 155

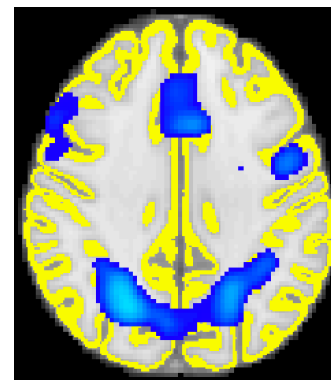
Hard 54 Same as 80%



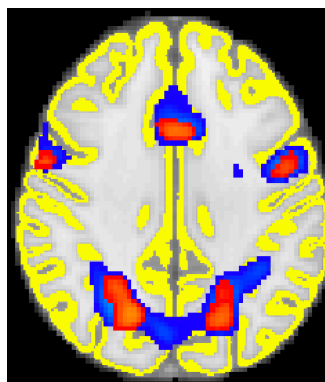
Scan 79



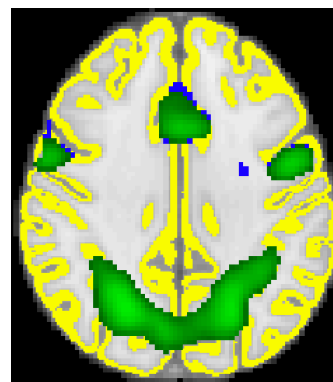
Scan 155



Scan 159



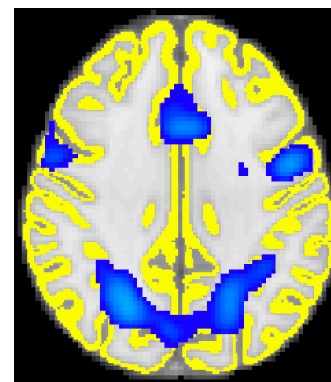
Scan 79



No early stopping



No early stopping



21 Hard 28 Same as 80%

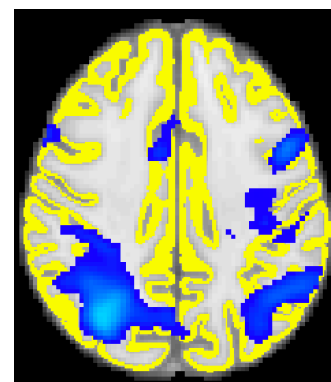
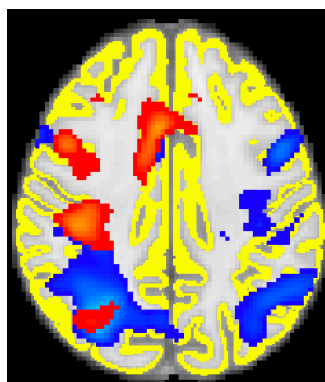
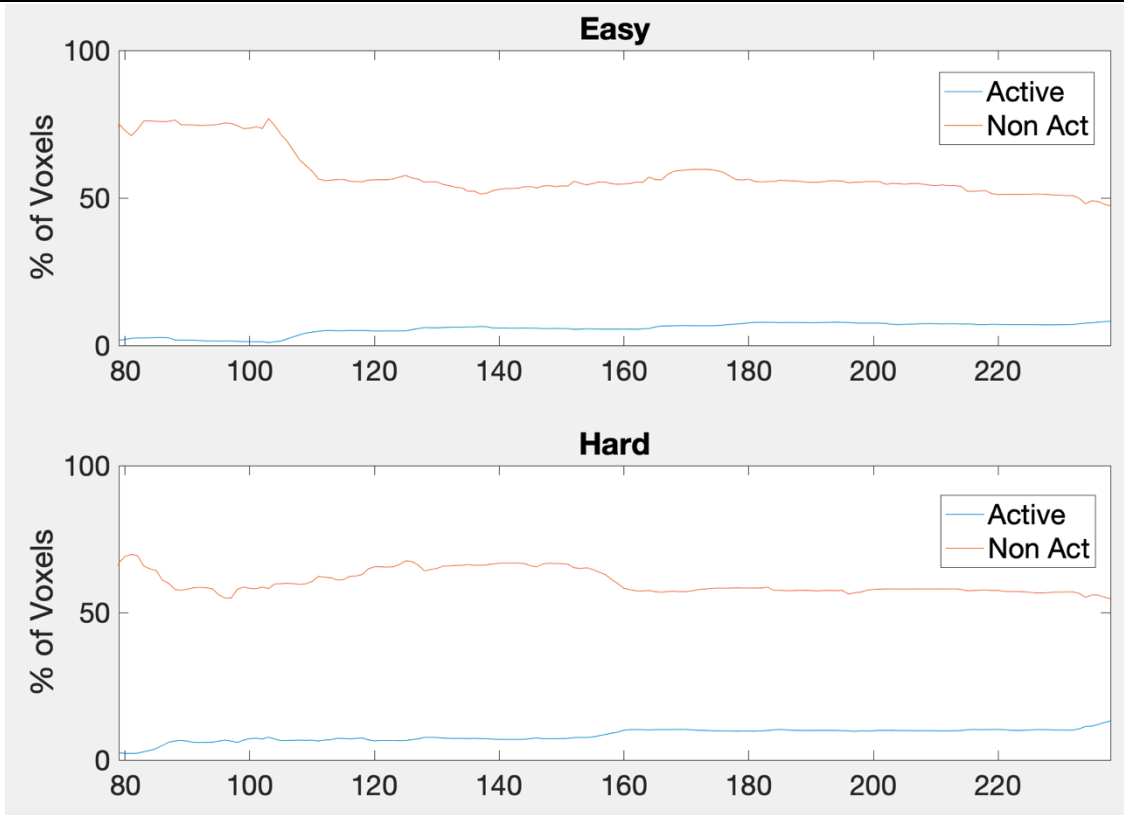
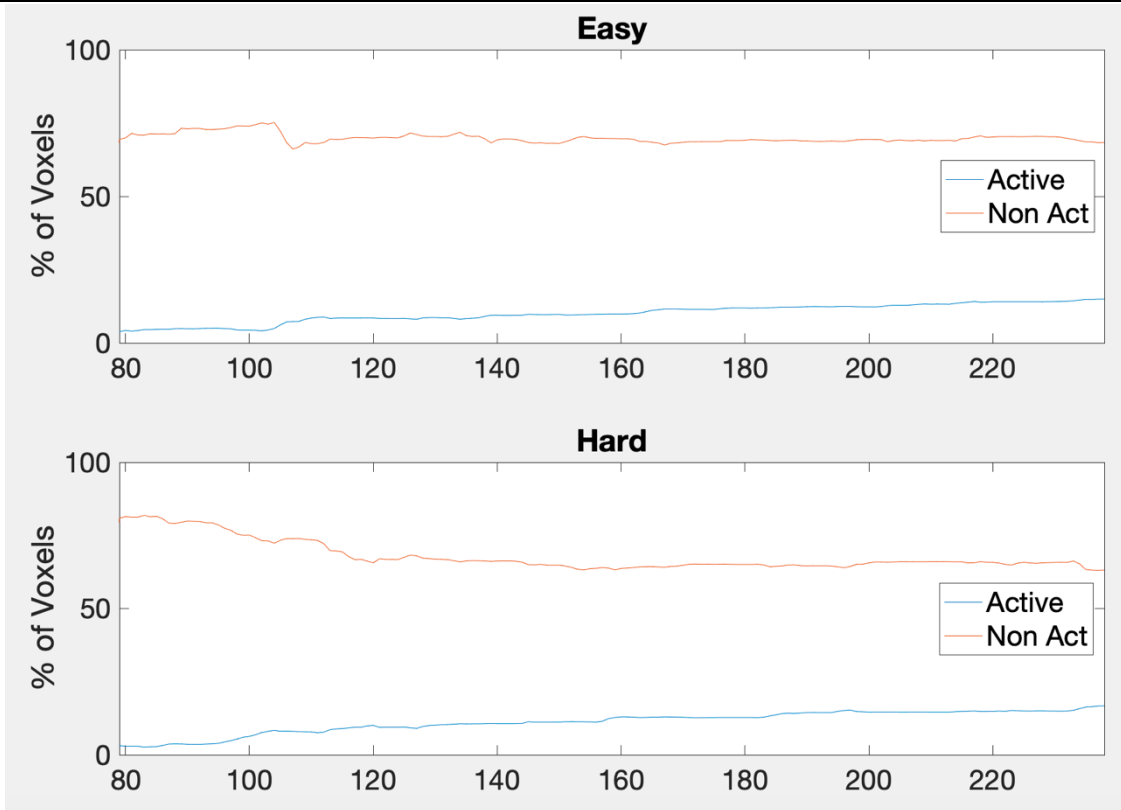
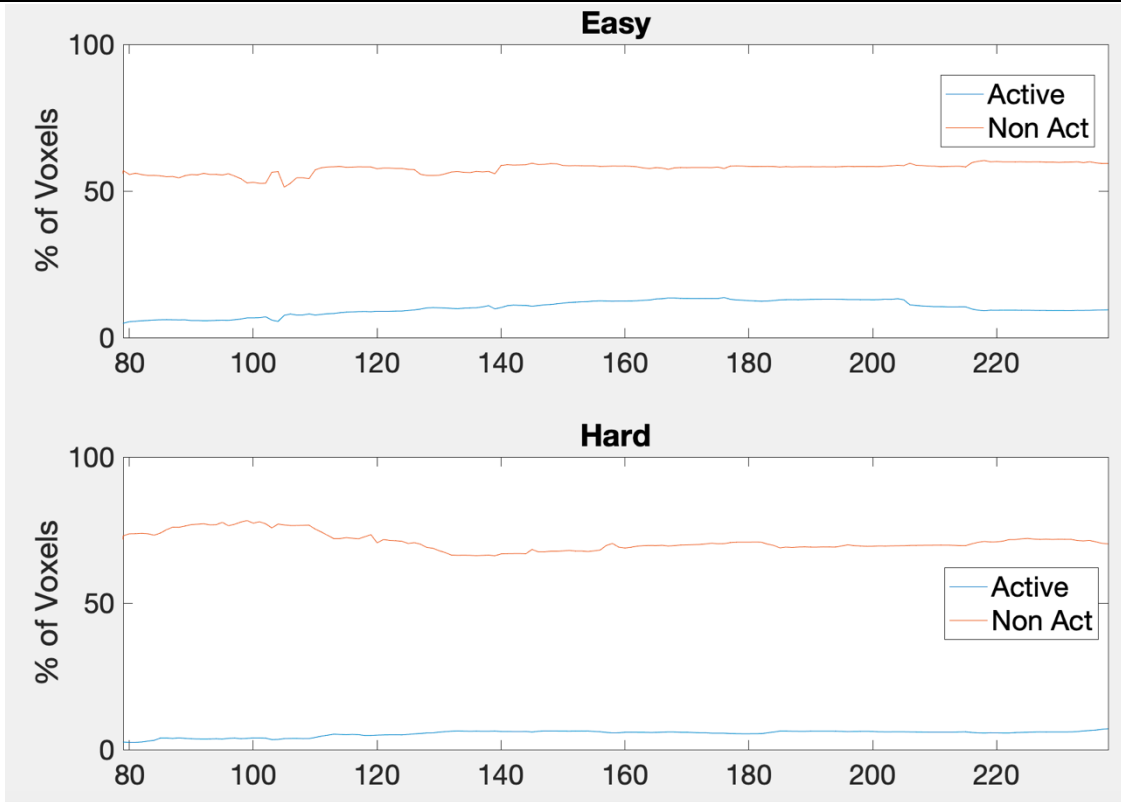


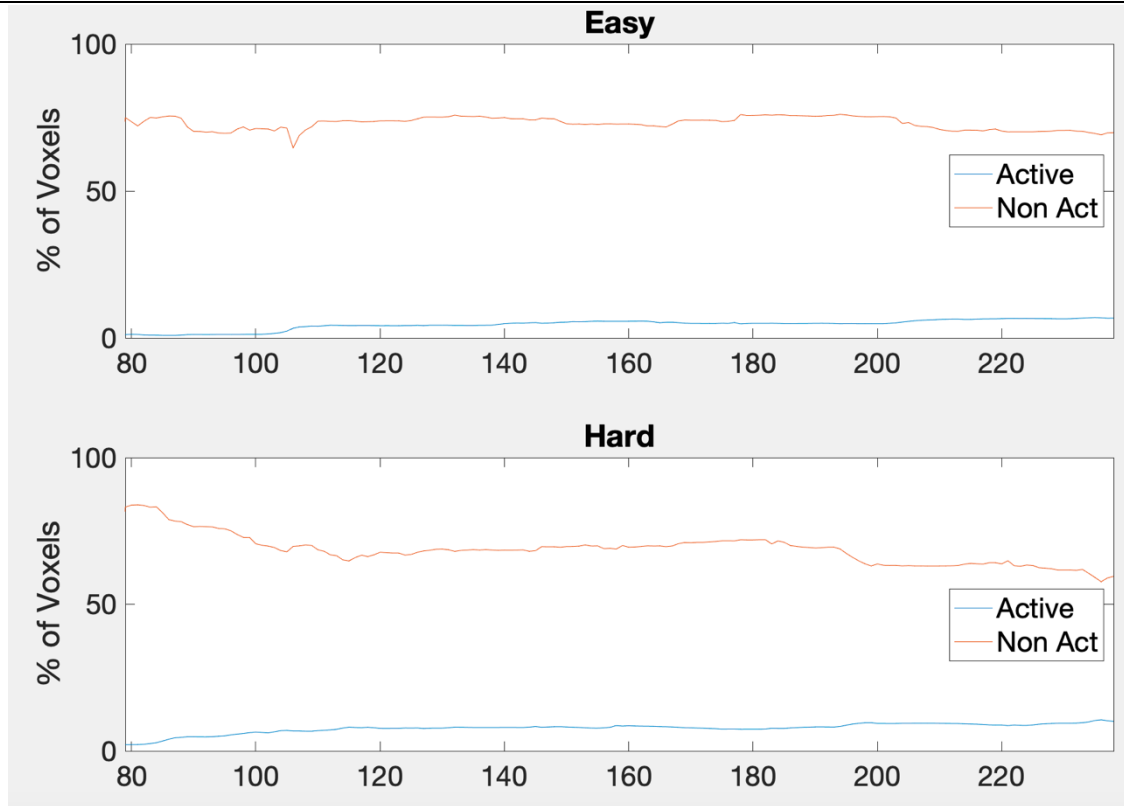
Table S2: Plots of the percentage of voxels classified as active and non-active at each scan number for each difficulty level for each subject. Information is given from scan 79 to 238.

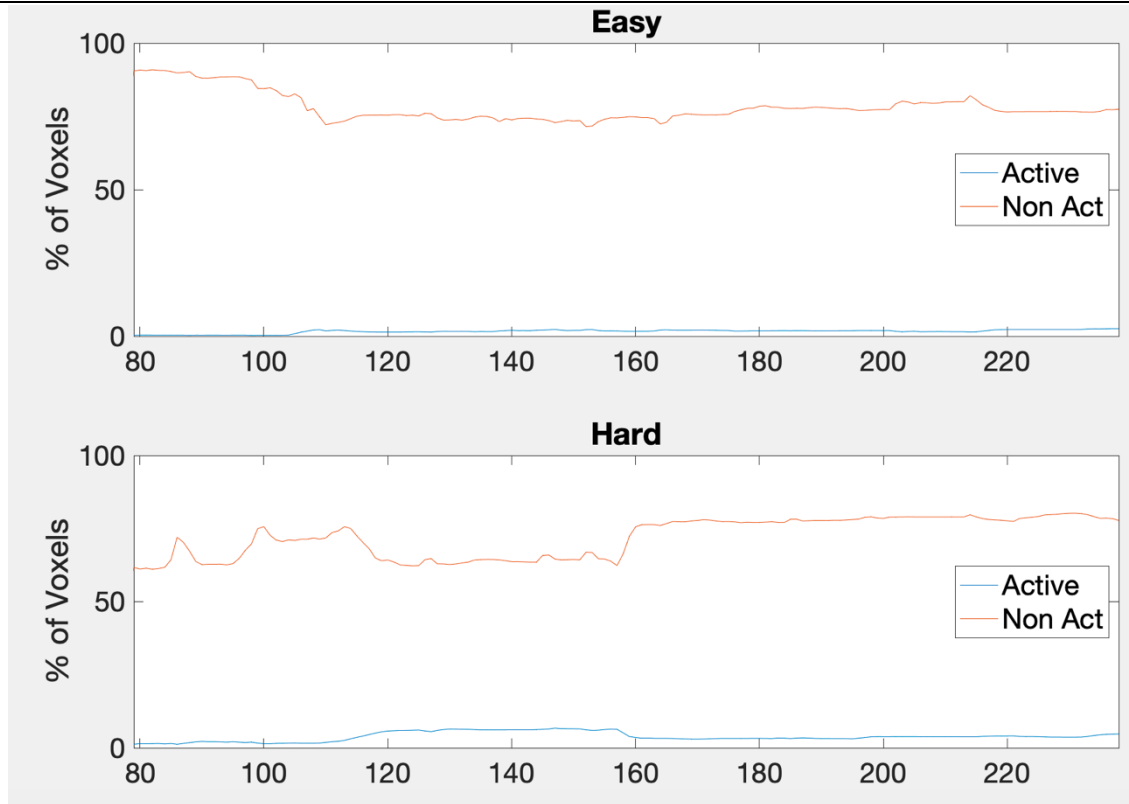
Subject	Total number of voxels	Classification of voxels by scan number
Control 1	115,062	

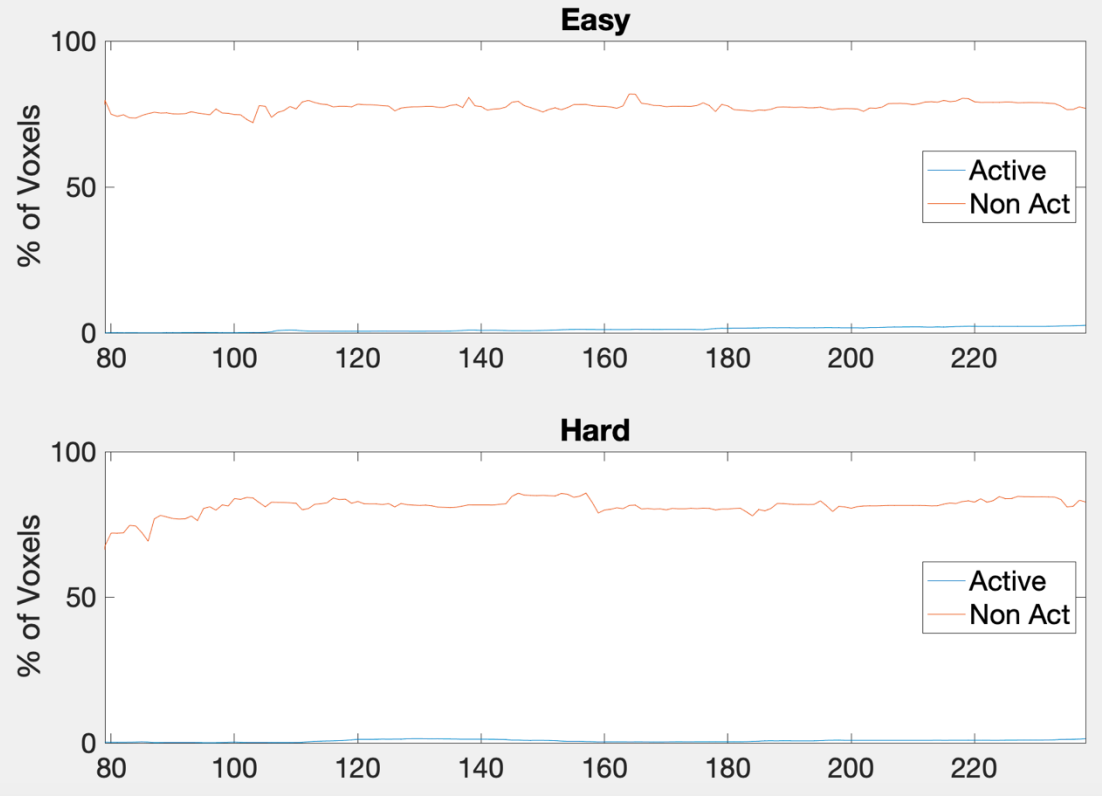


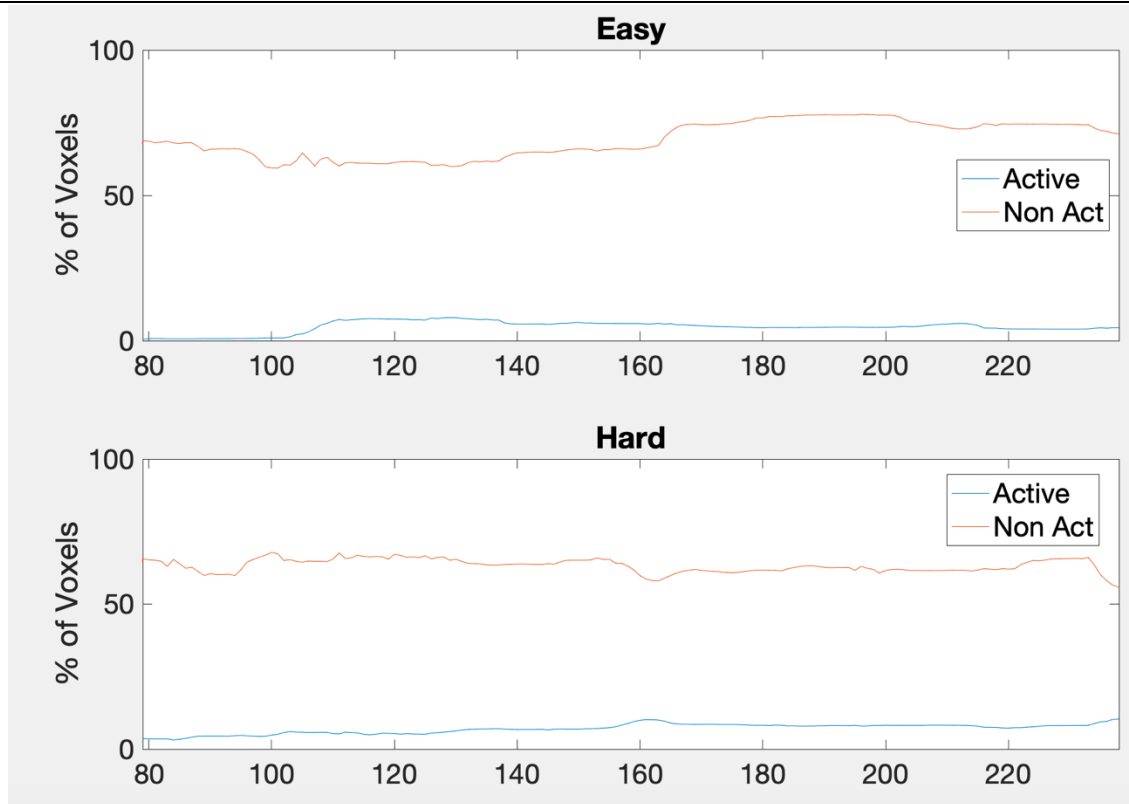


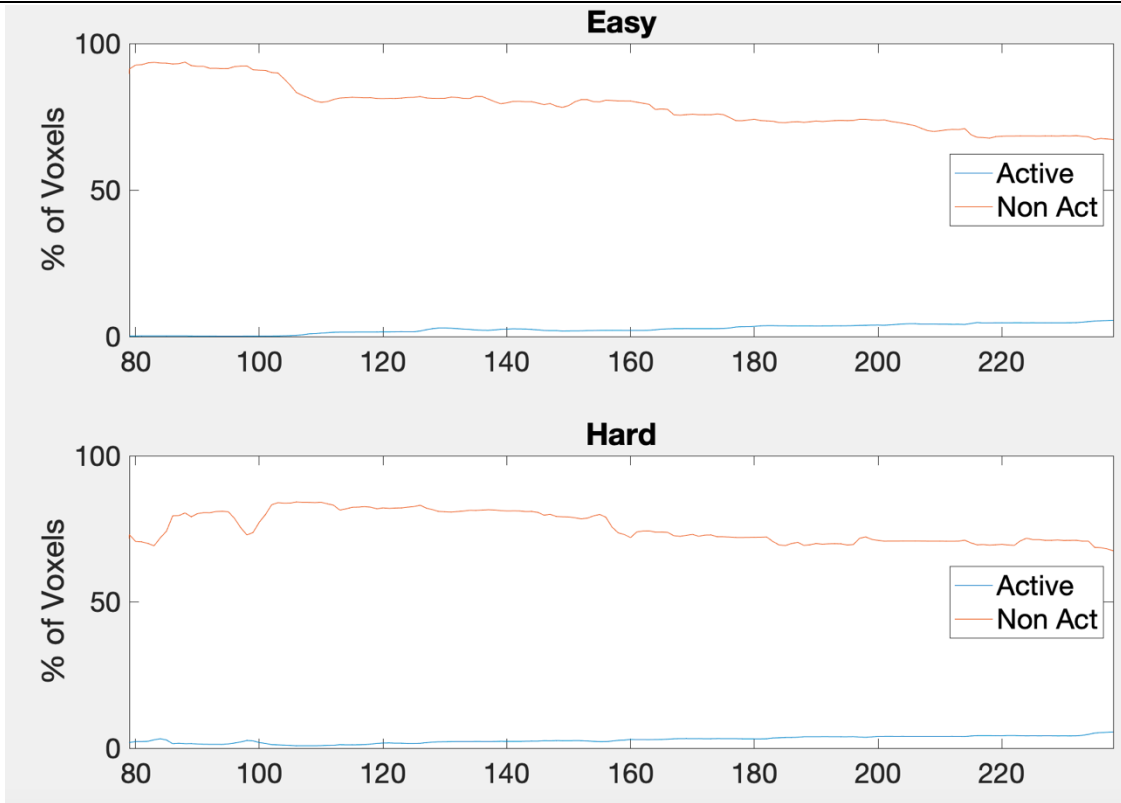


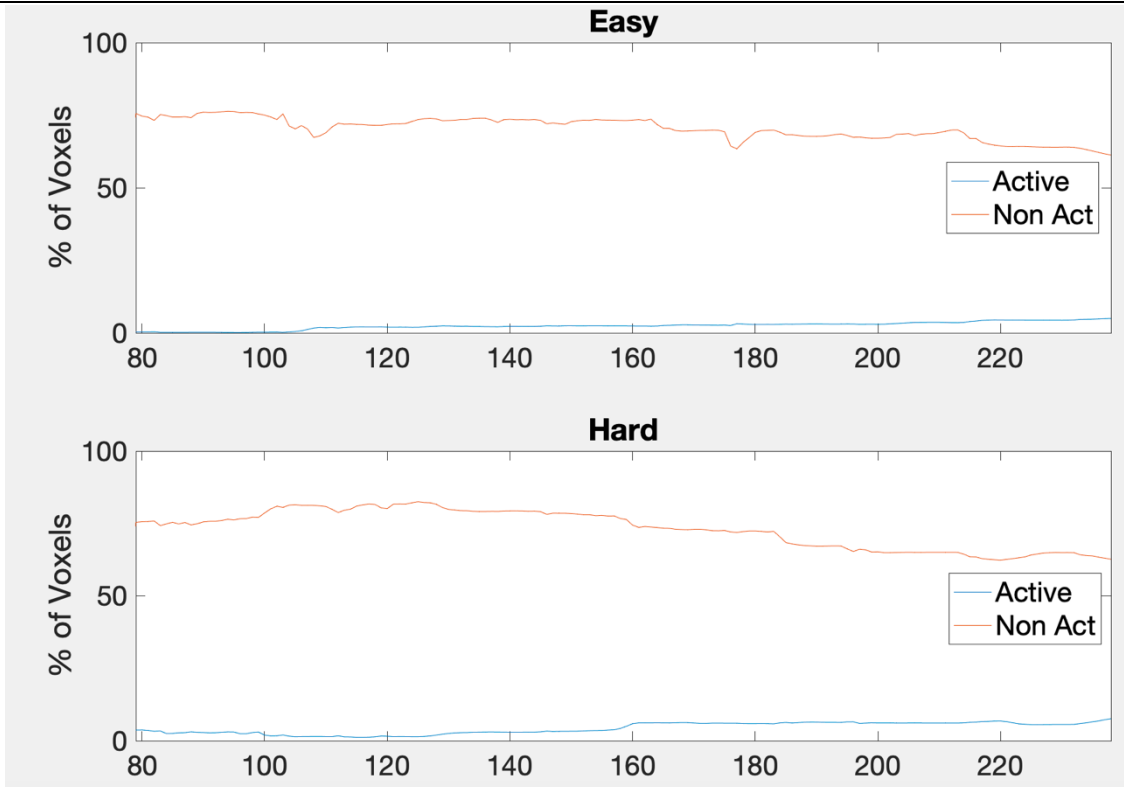


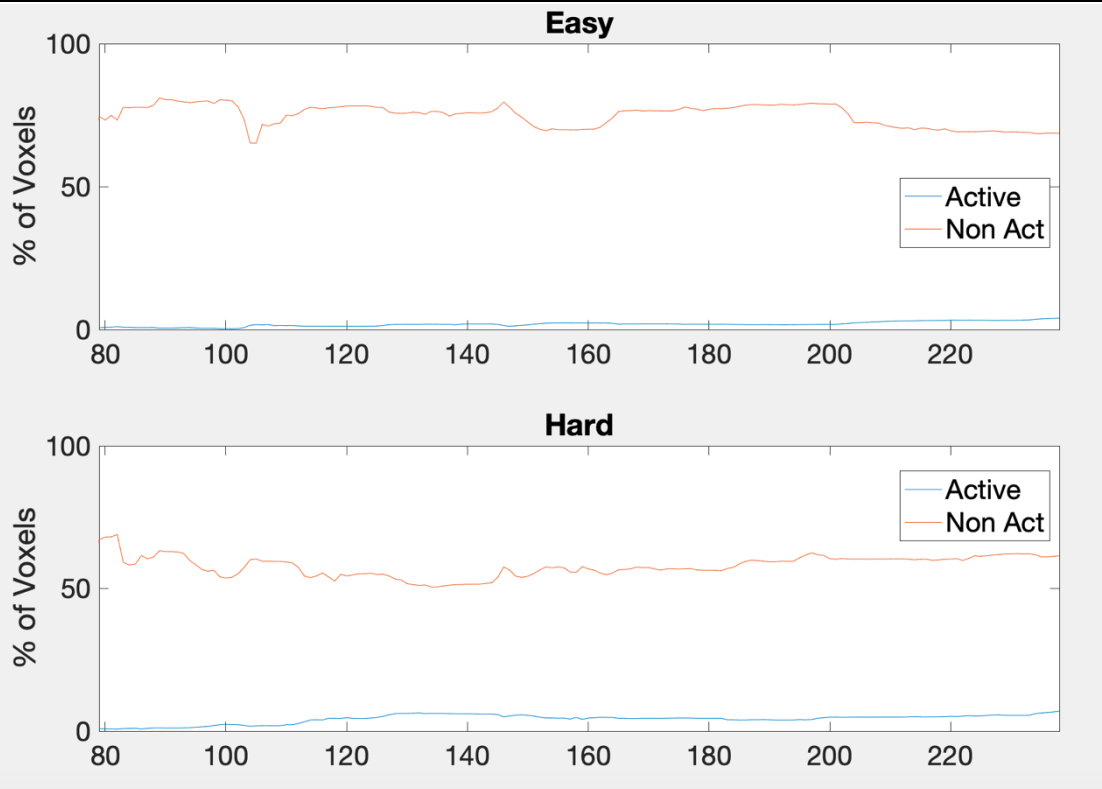


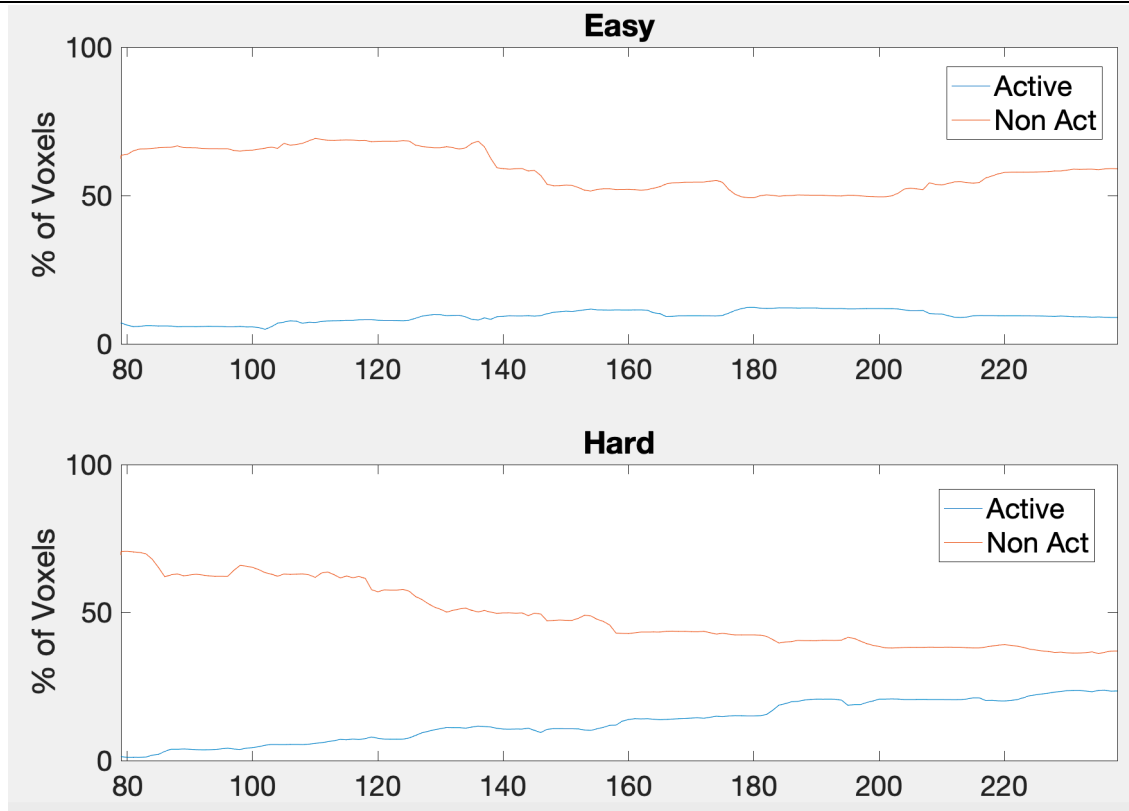


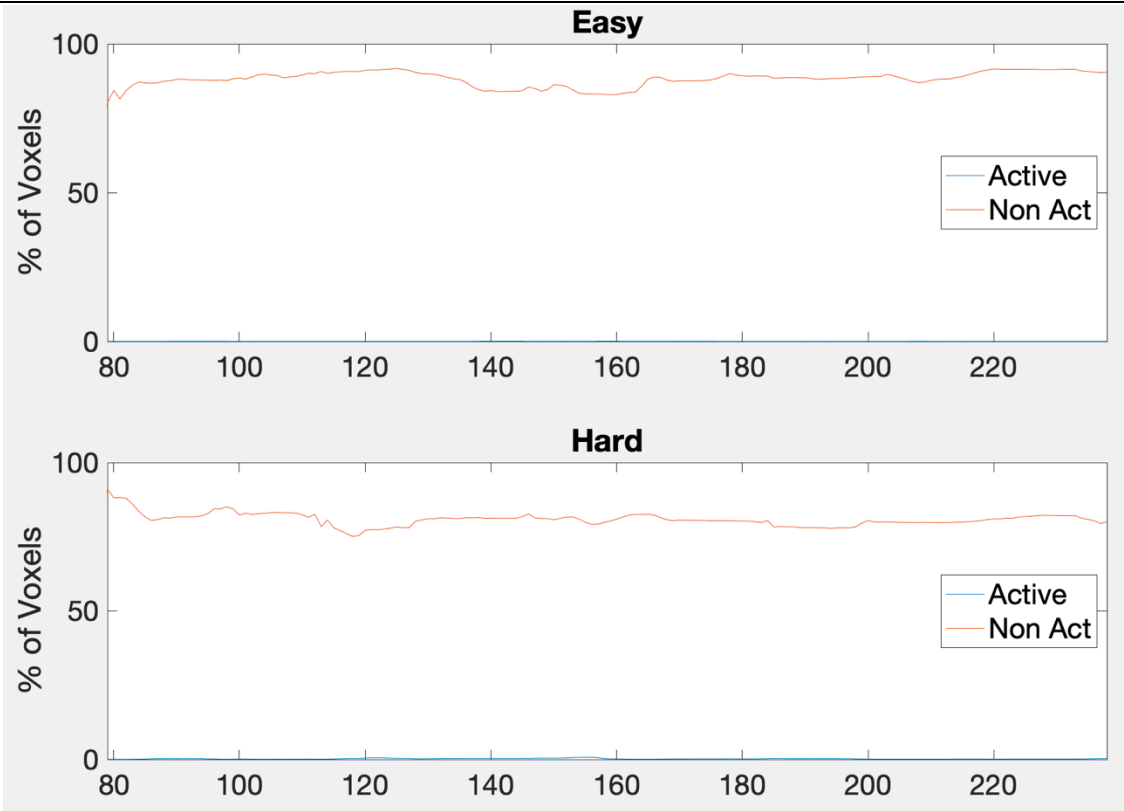


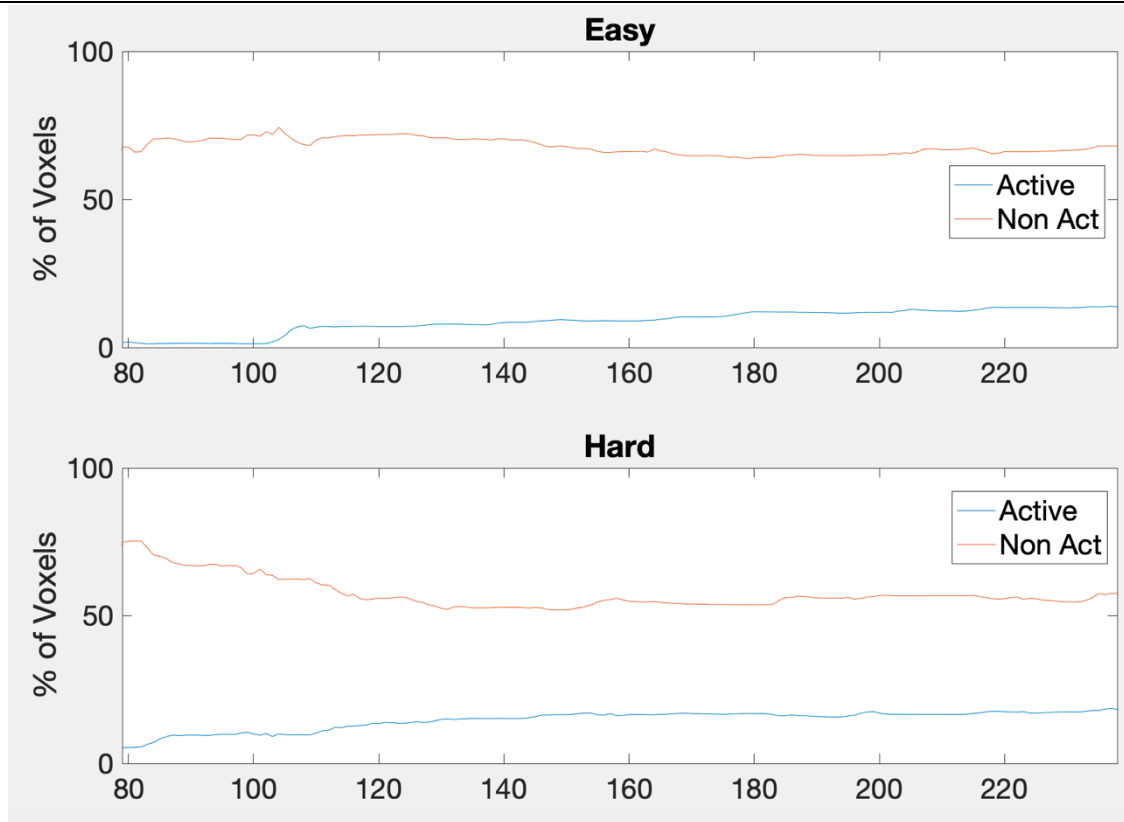


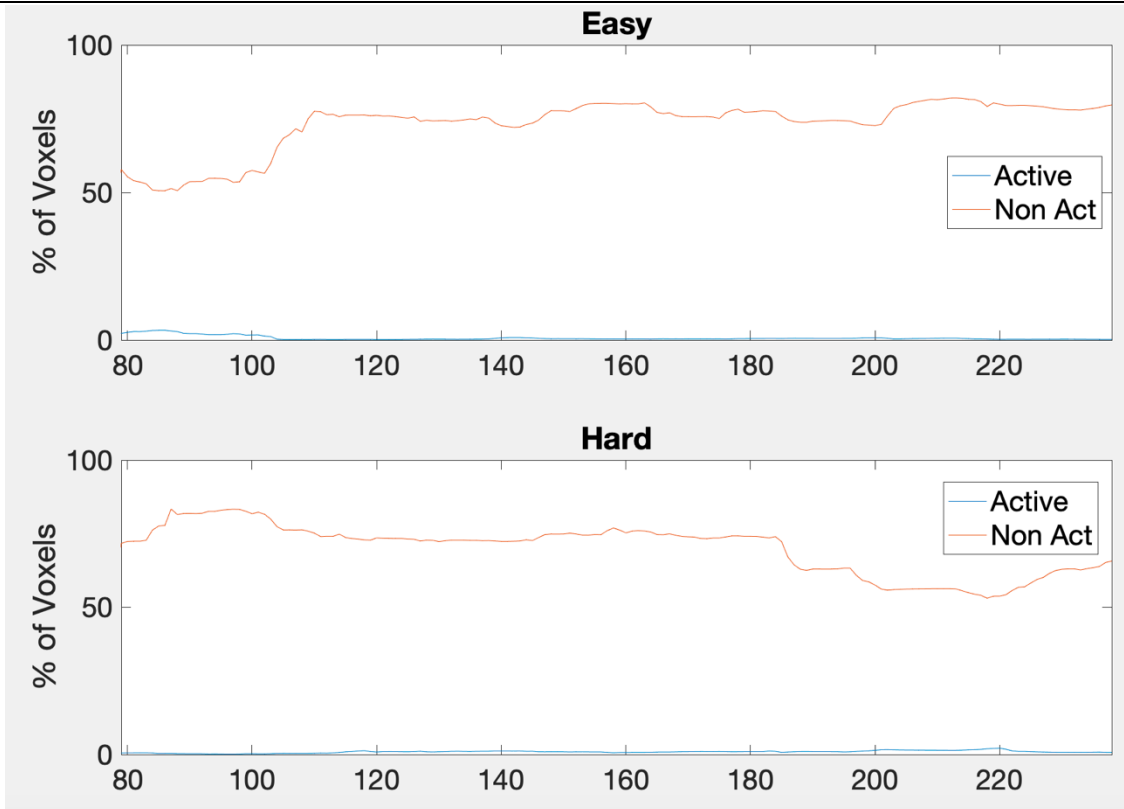


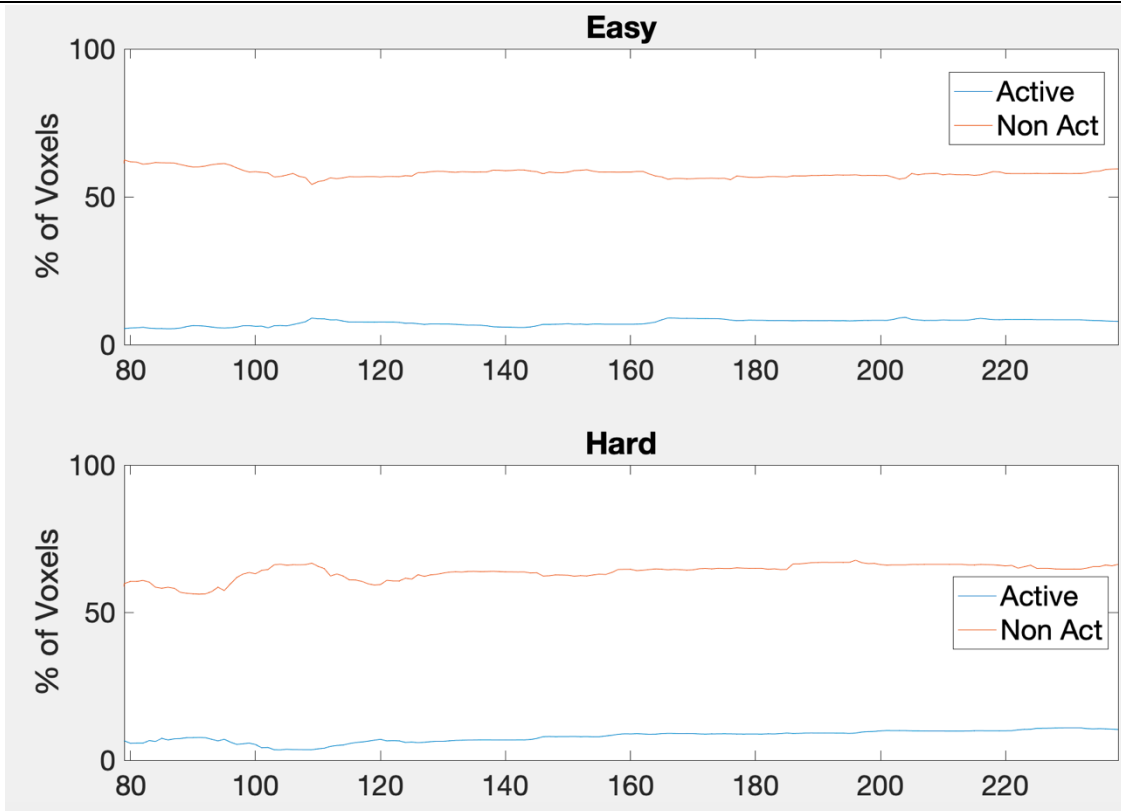


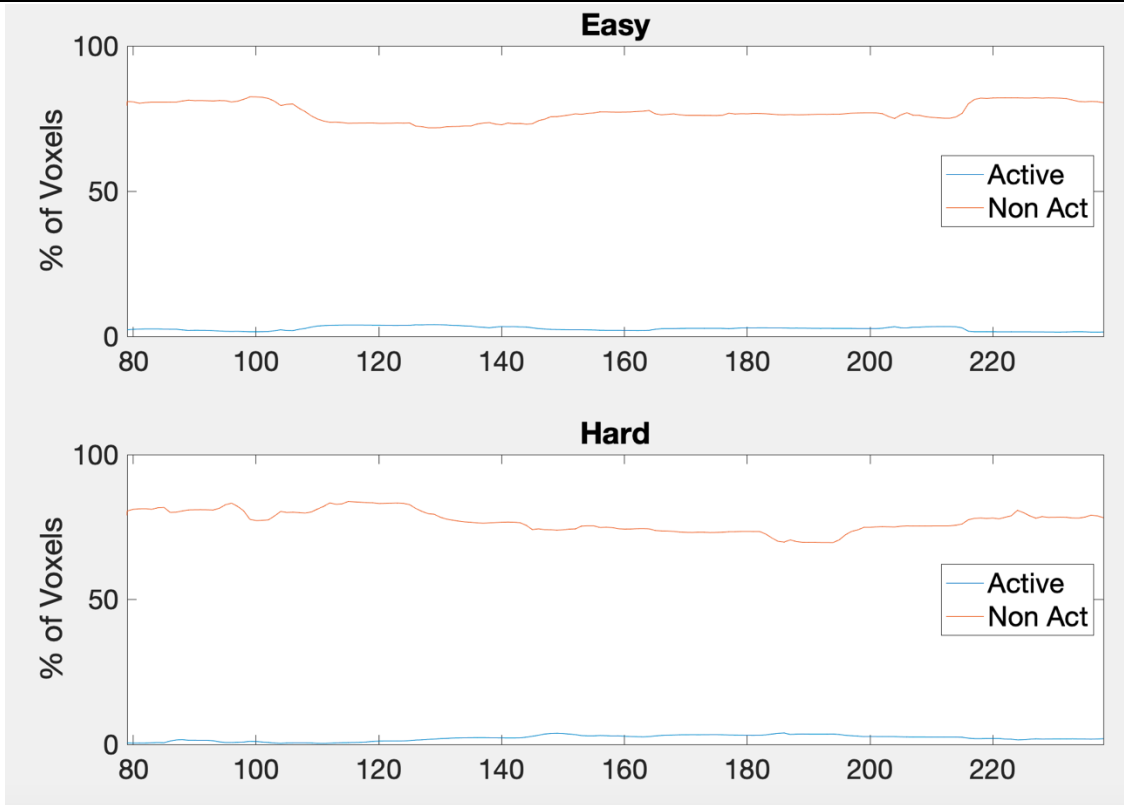


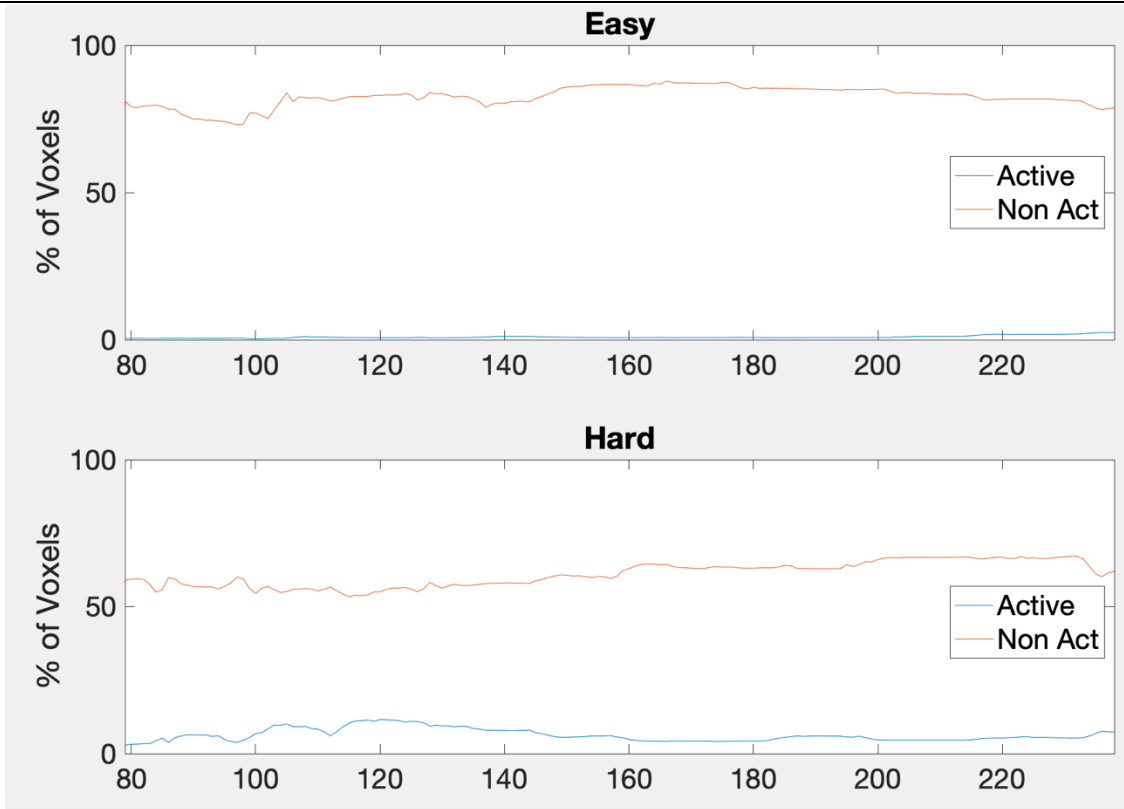


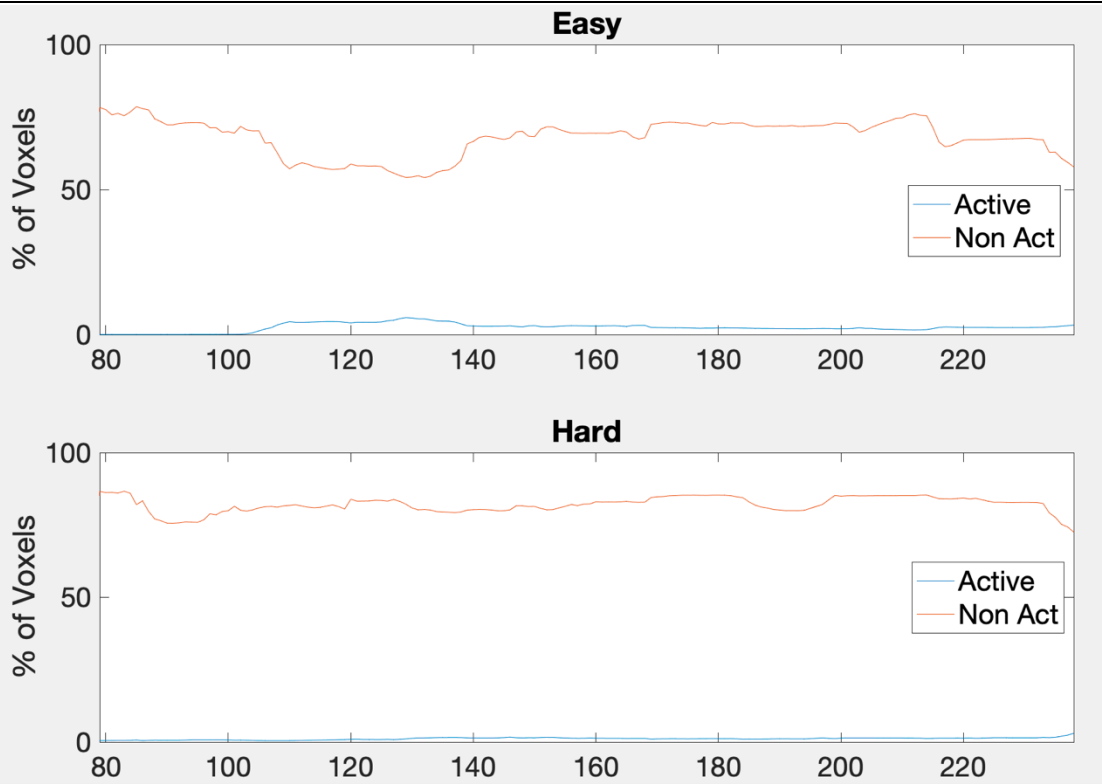


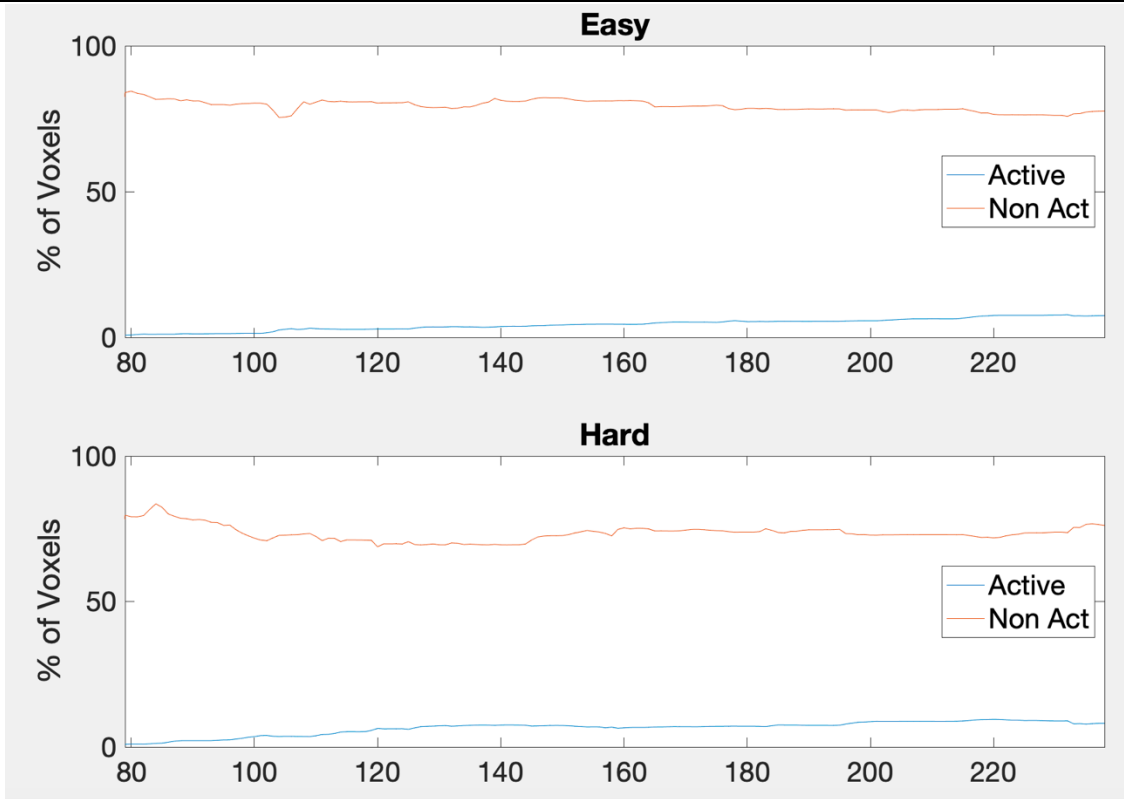


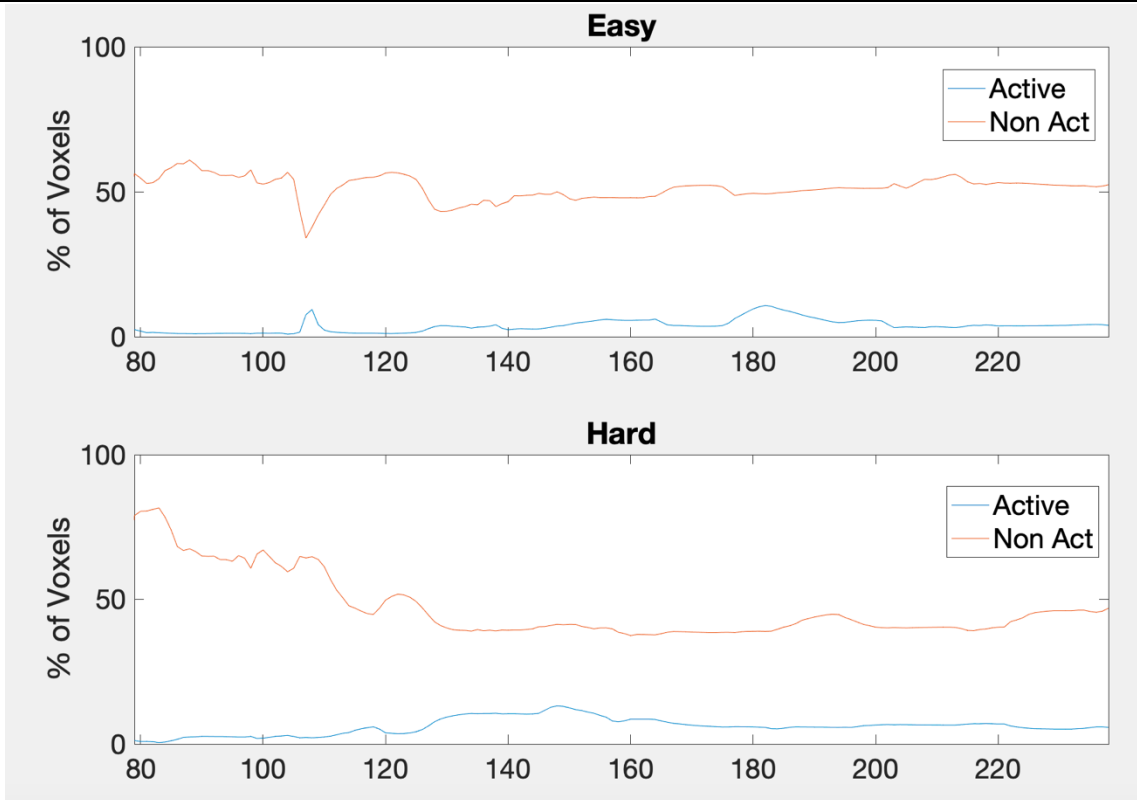


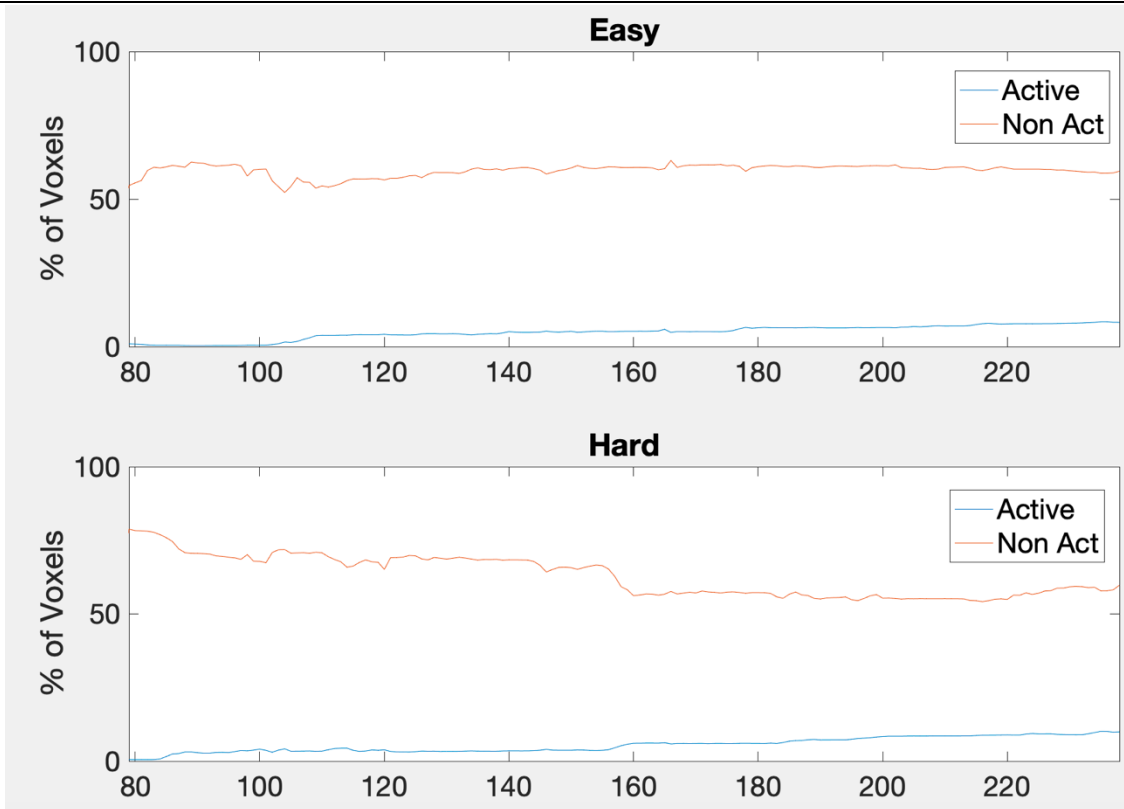












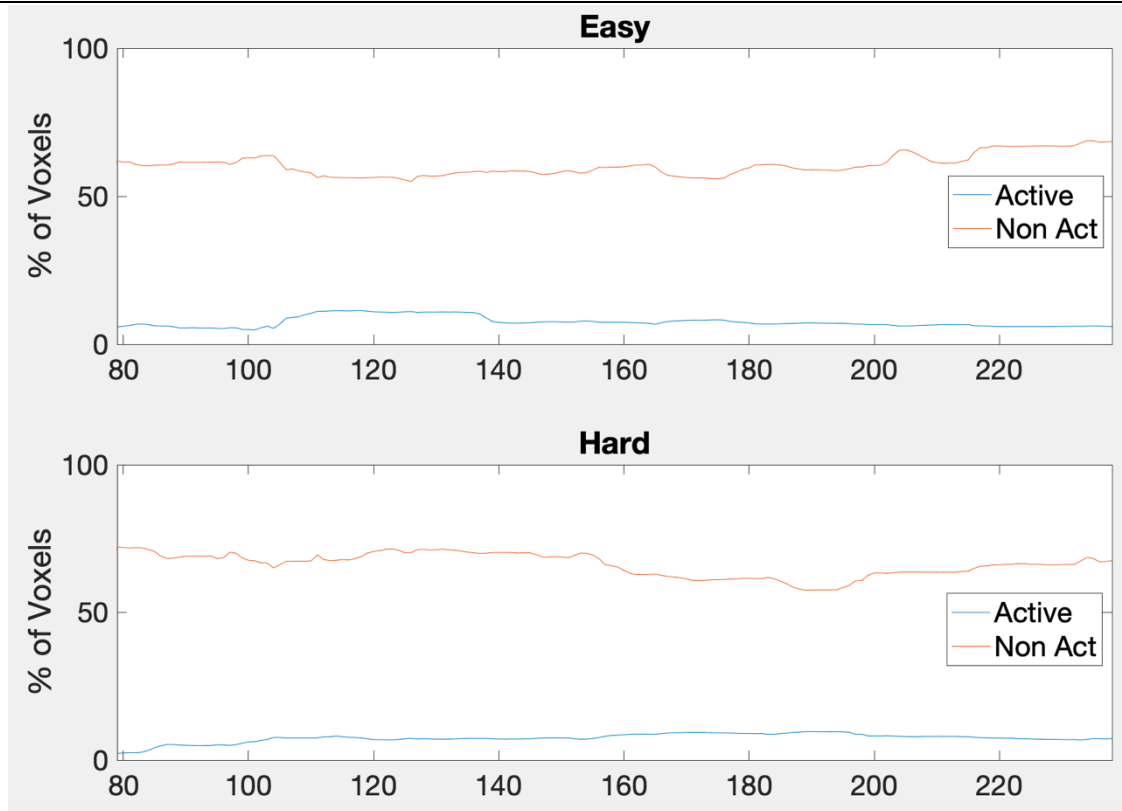
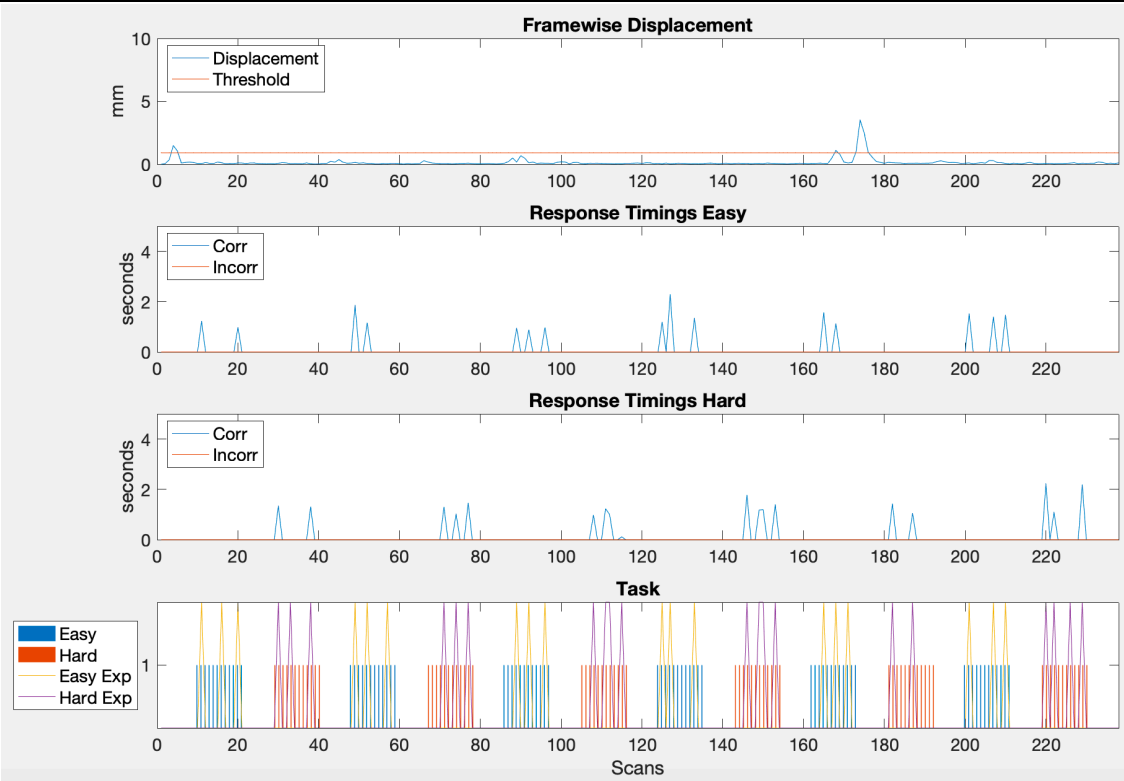
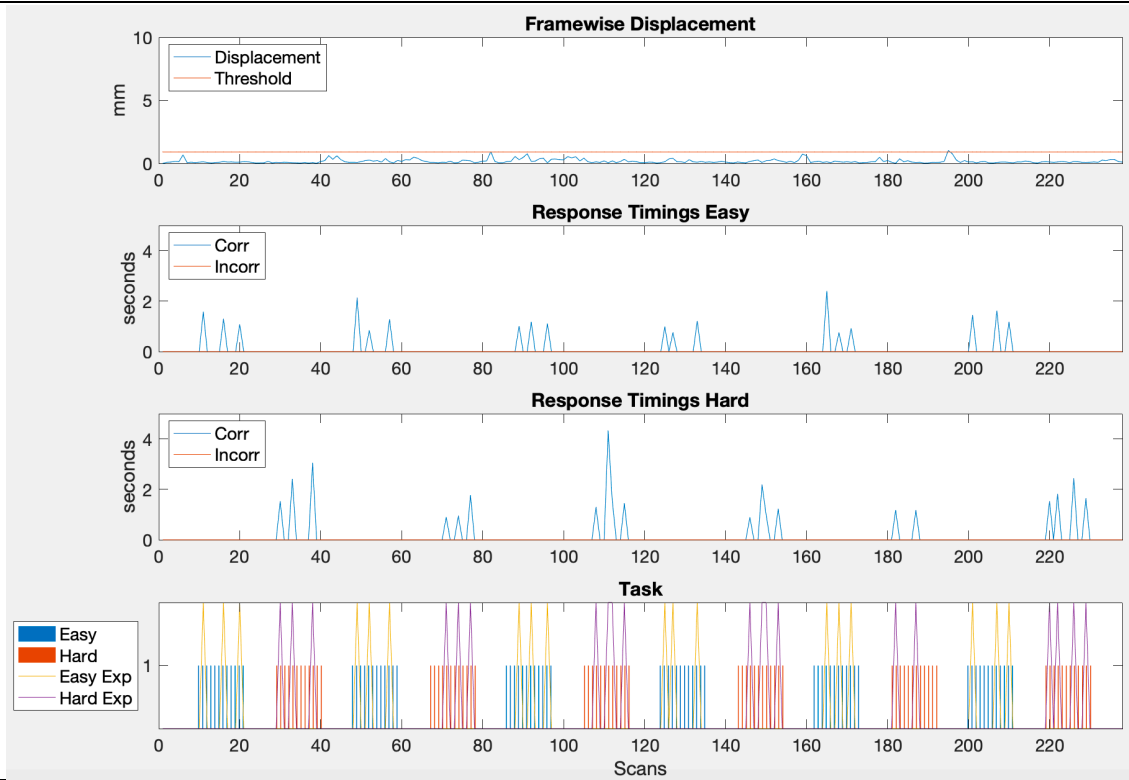
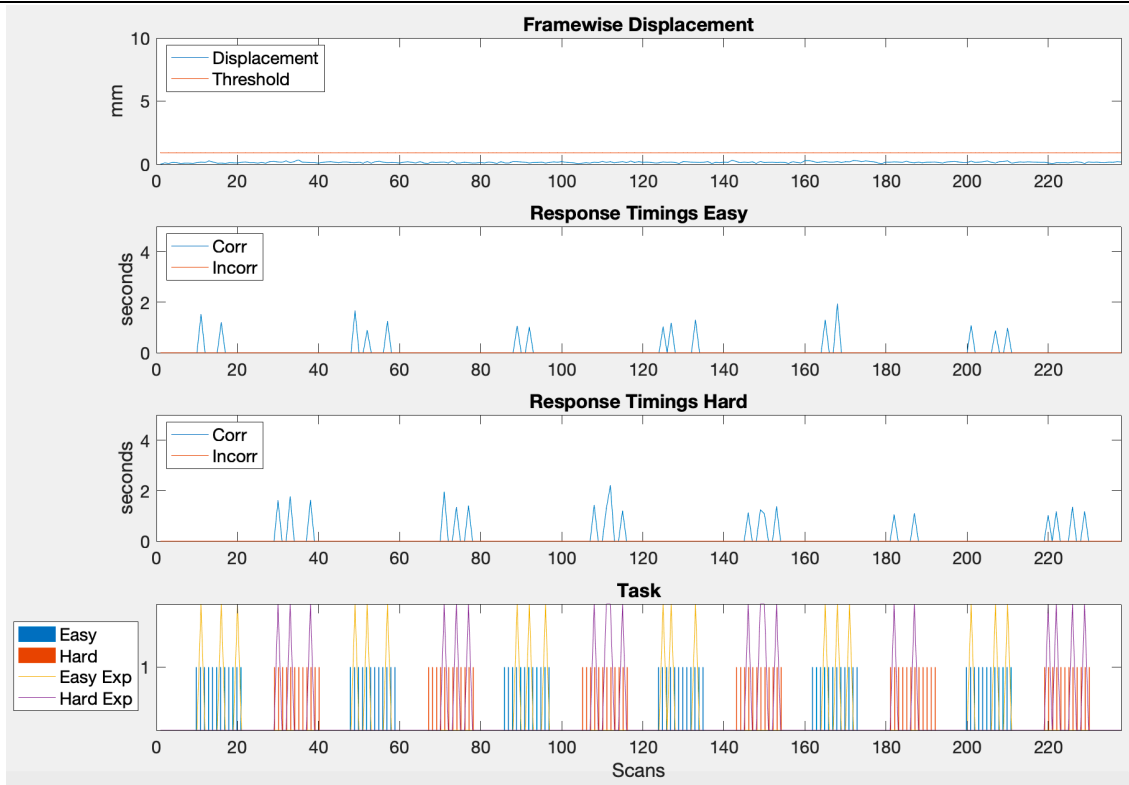


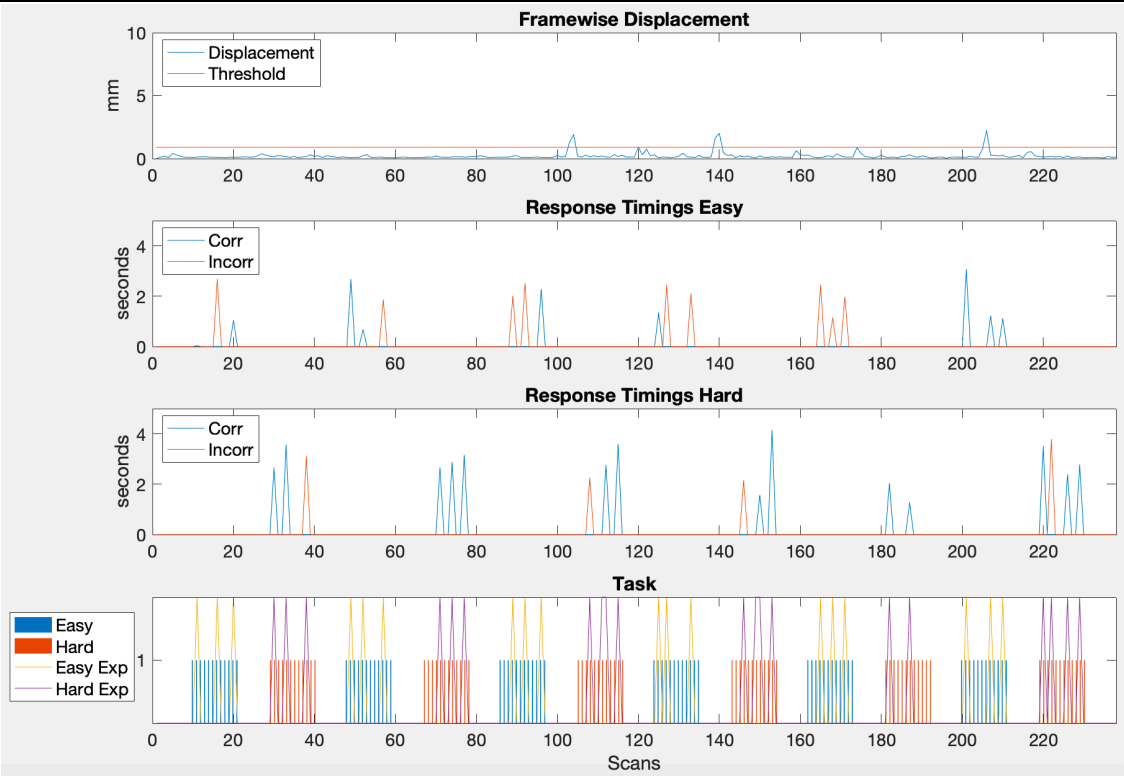
Table S3: Plots of framewise displacement and subject responses. 1st panel (top): framewise displacement estimation from motion parameters. 2nd panel: Subject responses for easy level, y-axis magnitude indicates time taken to respond. 3rd Panel: hard level subject responses, y-axis magnitude indicates time taken to respond. 4th panel (bottom): the duration of the easy and hard level blocks are shown for reference along with the timing of the expected responses during each block ('Exp' – timing of the expected response).

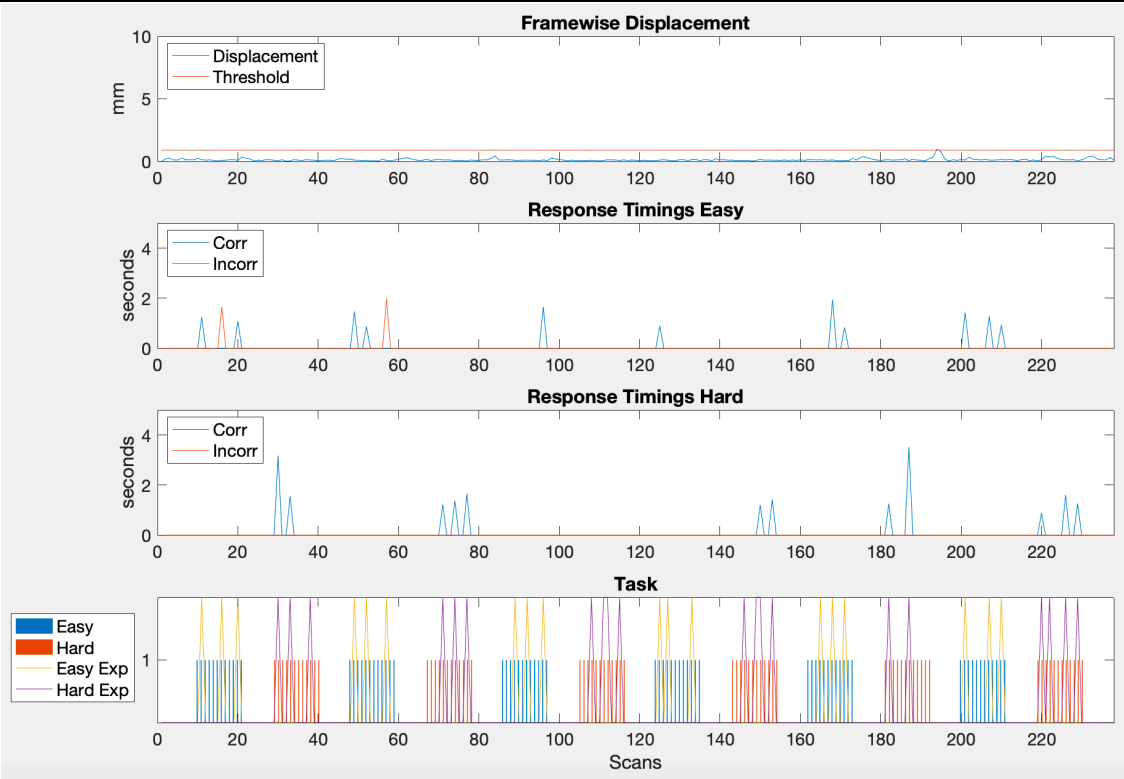
Subject	Motion and response plots
Control	

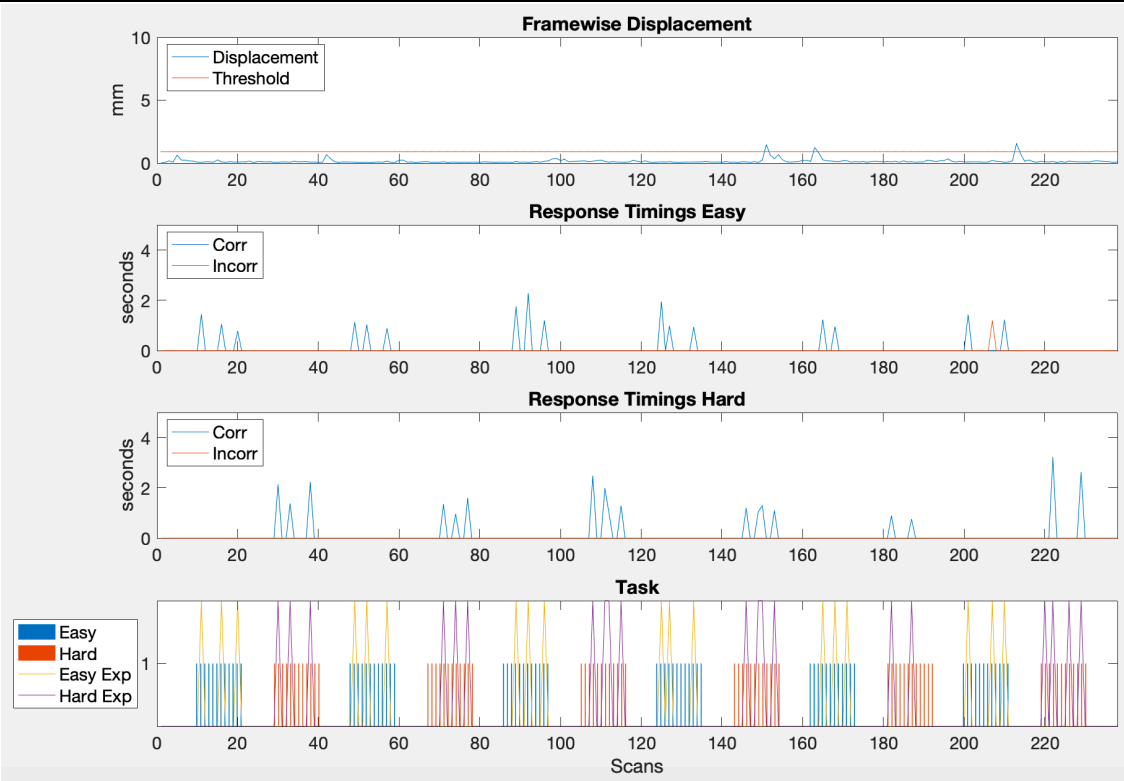


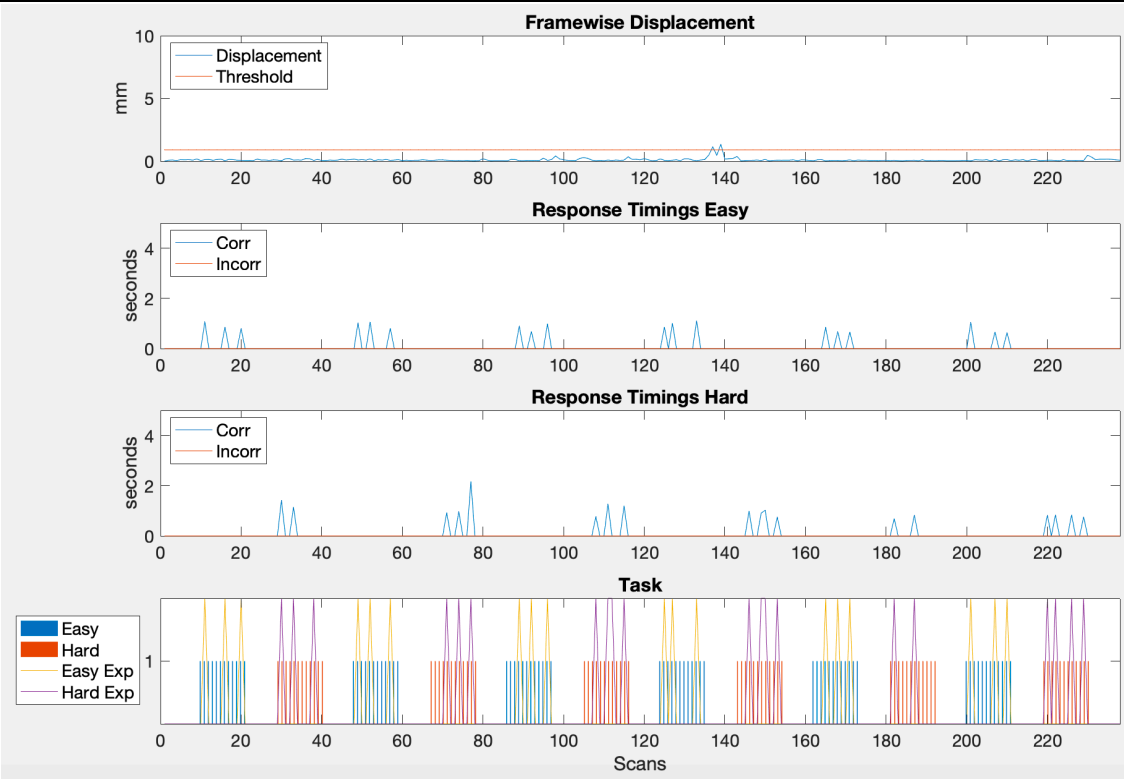


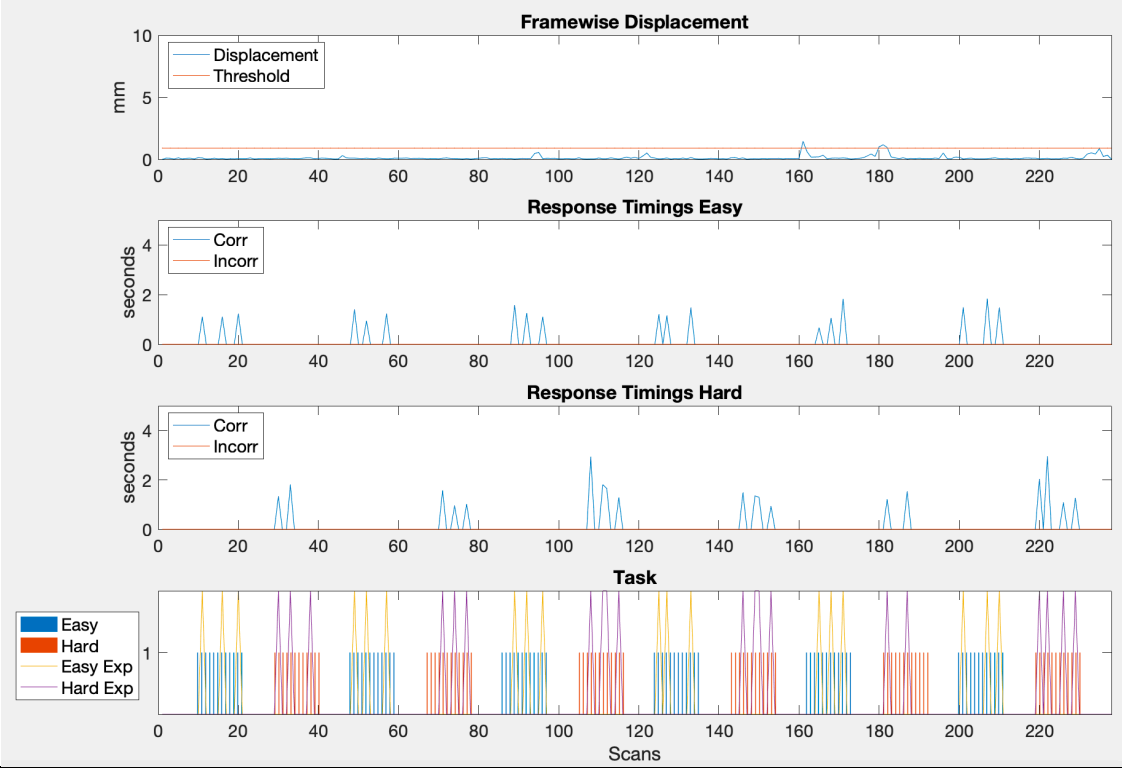


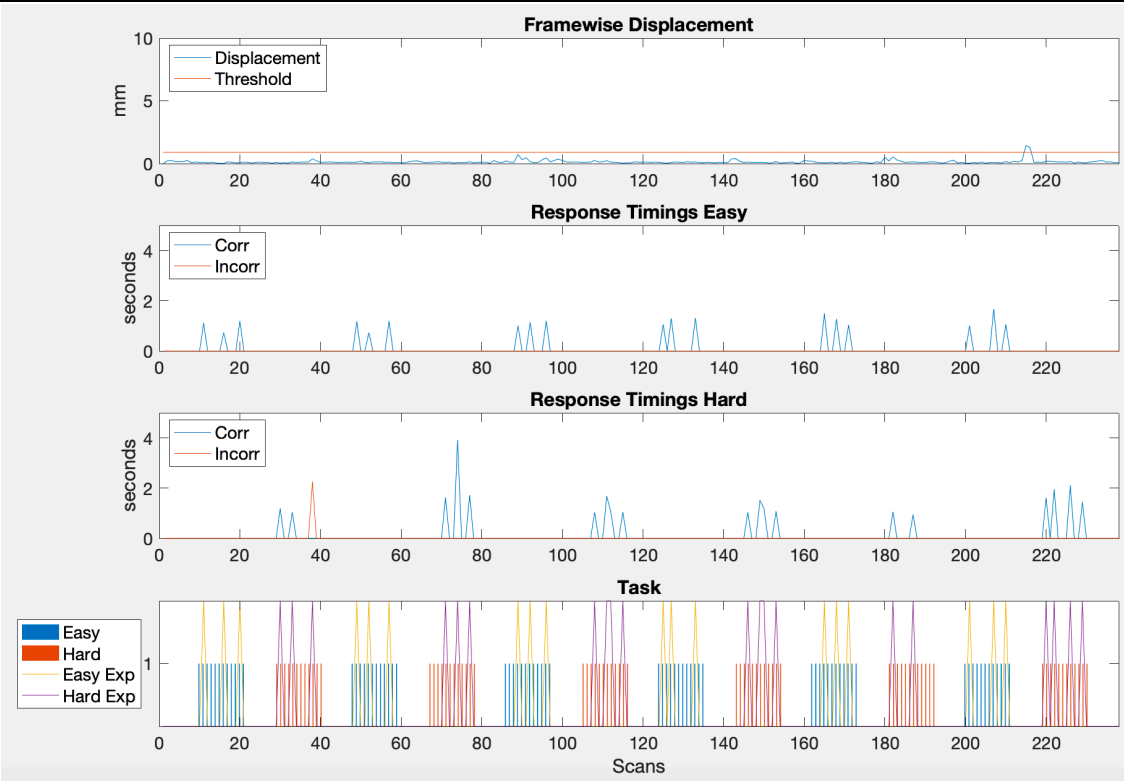


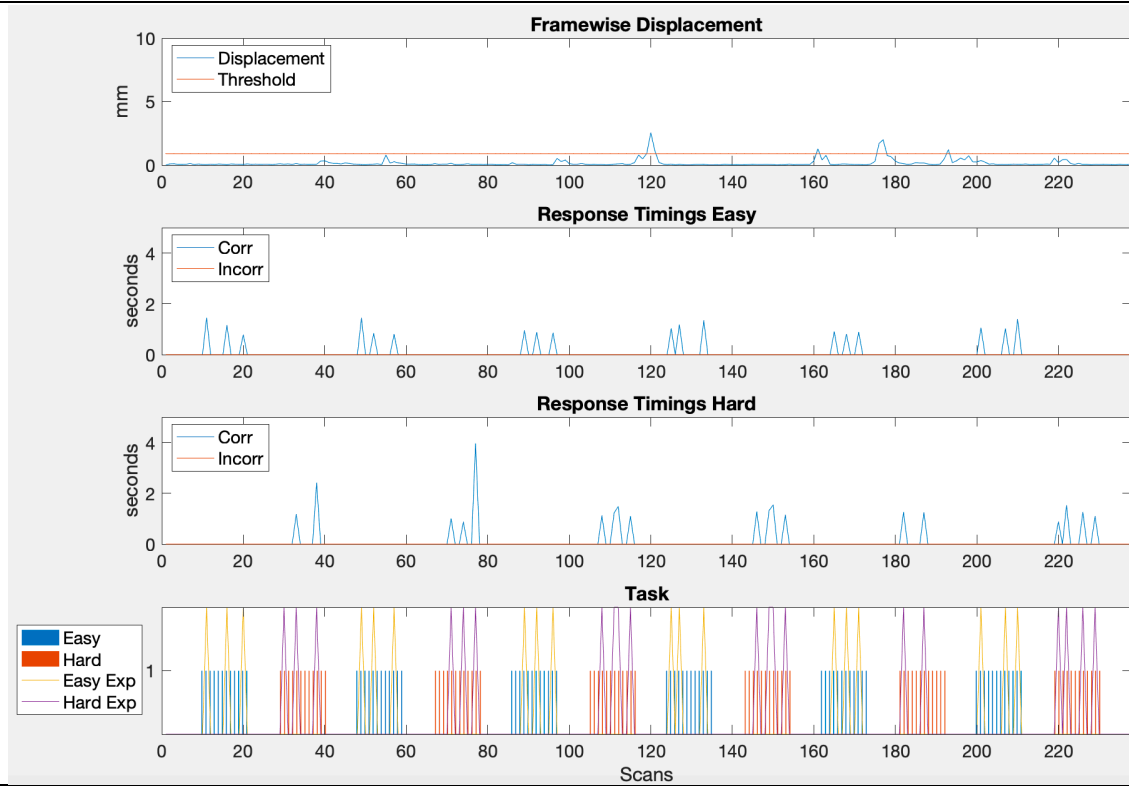


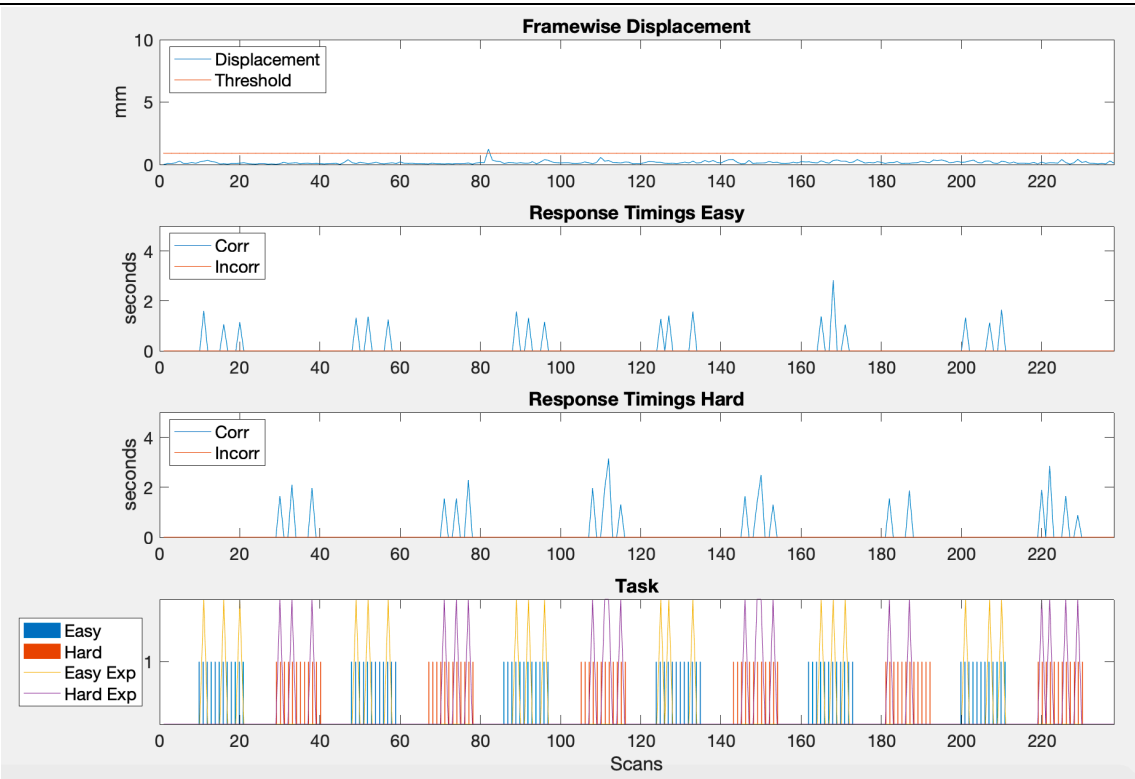


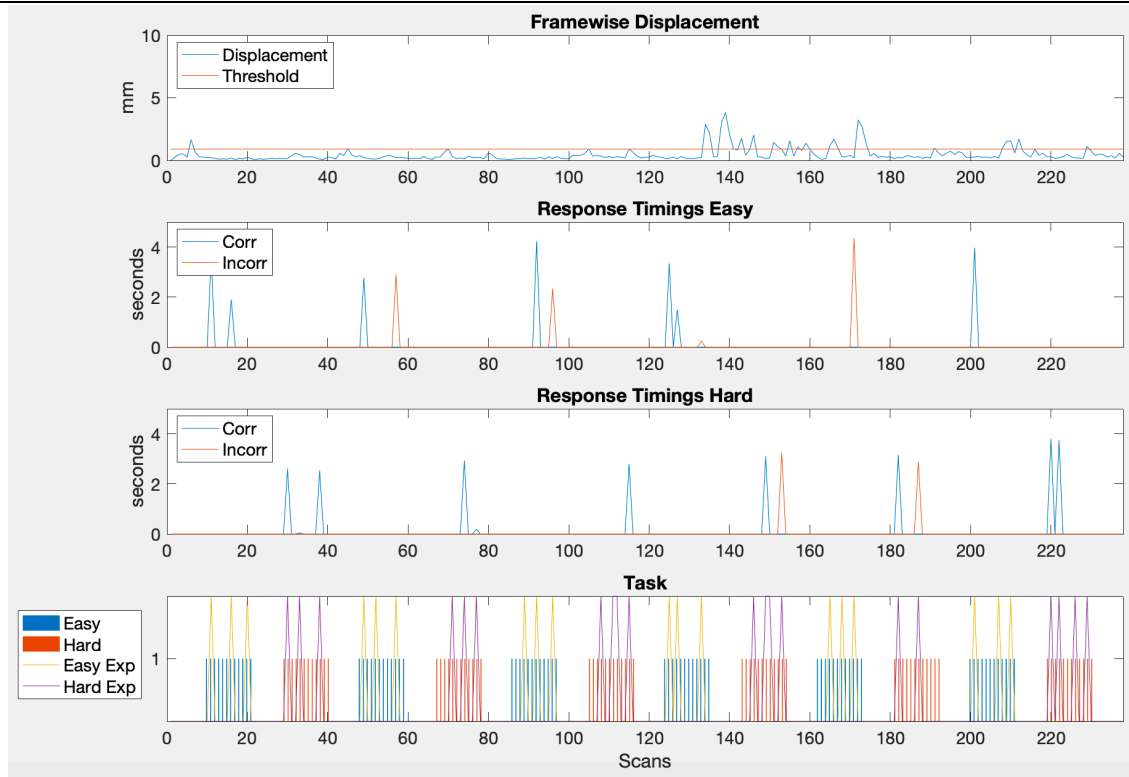


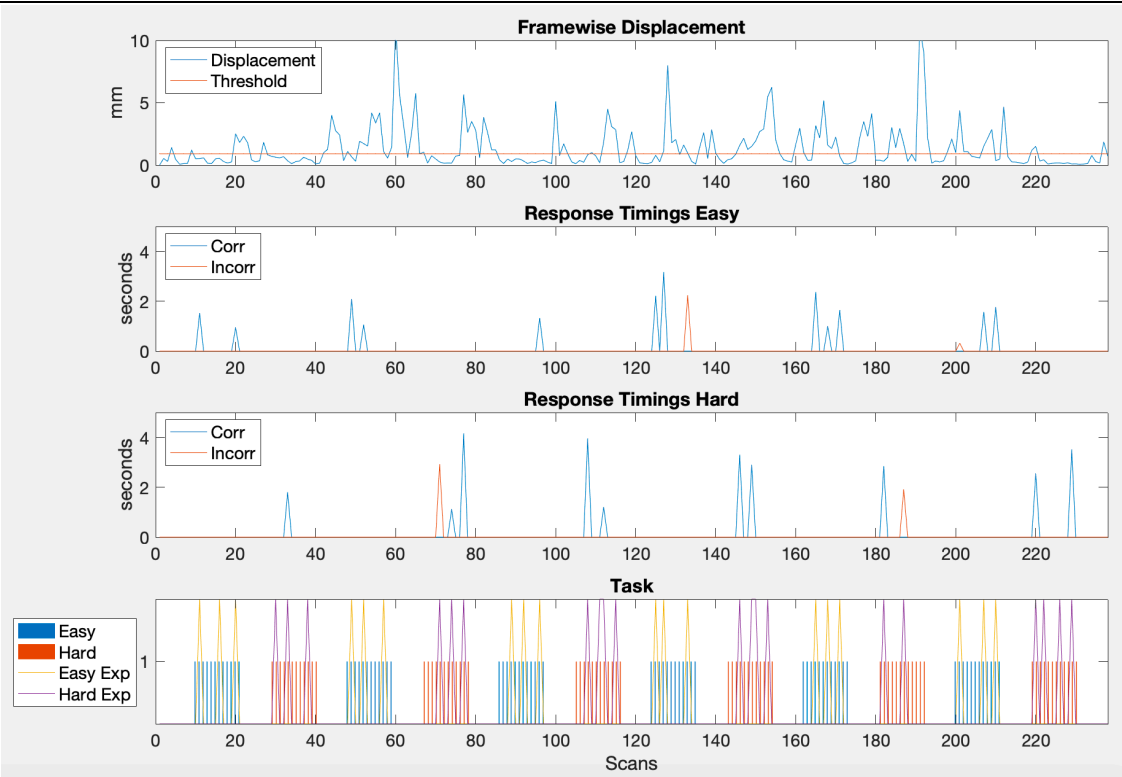


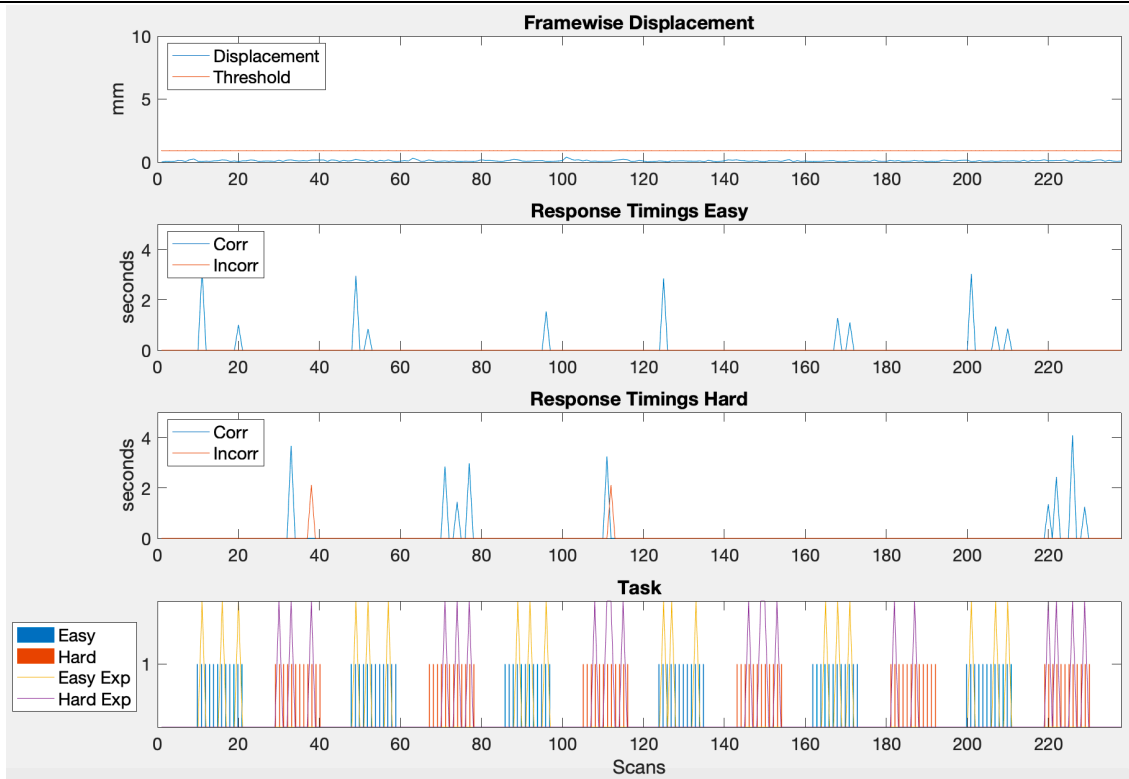


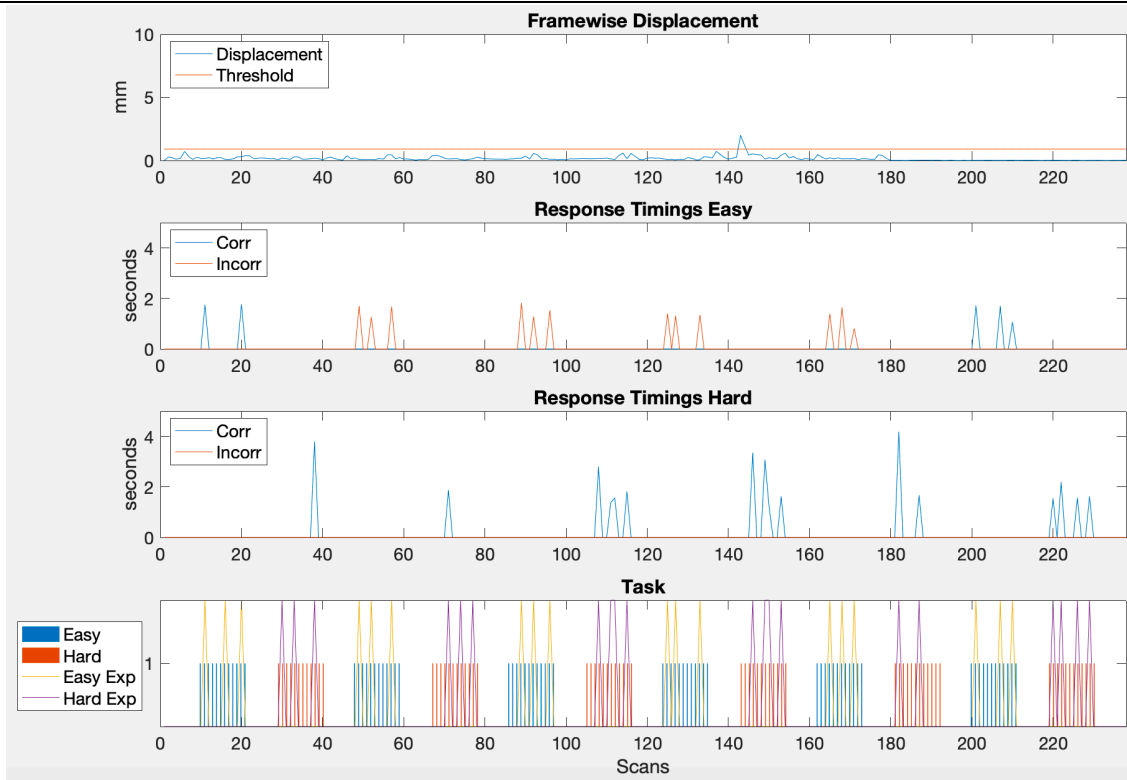


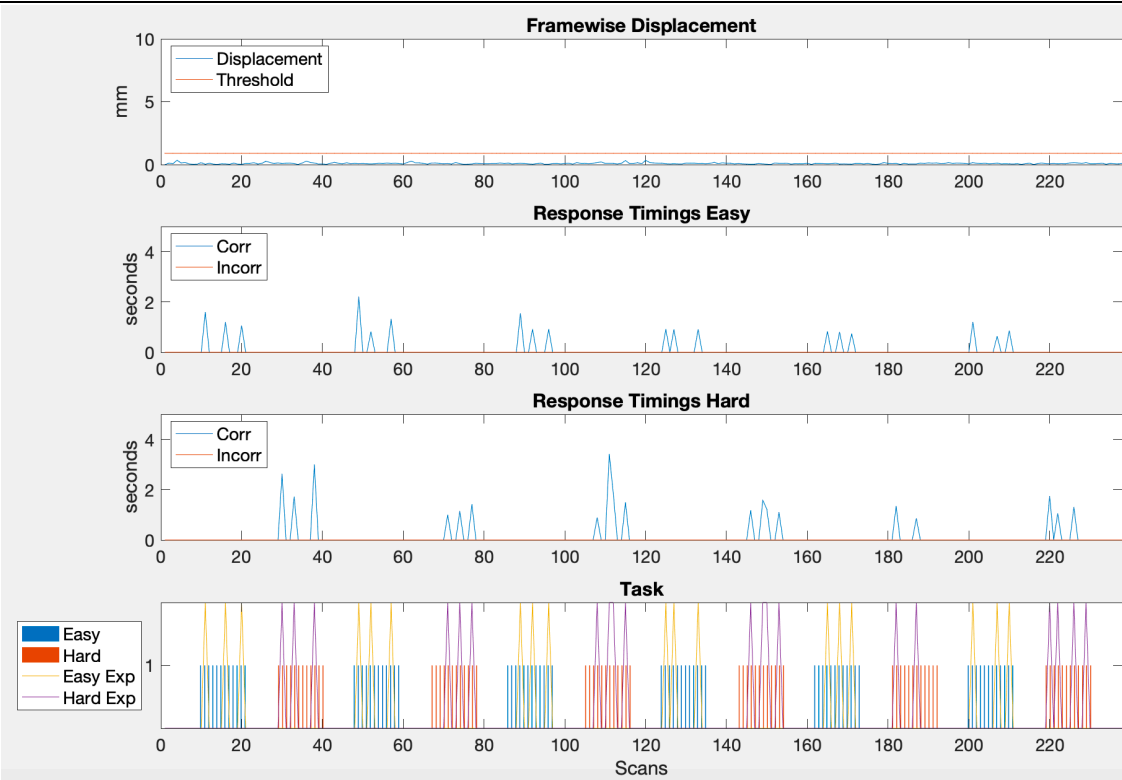


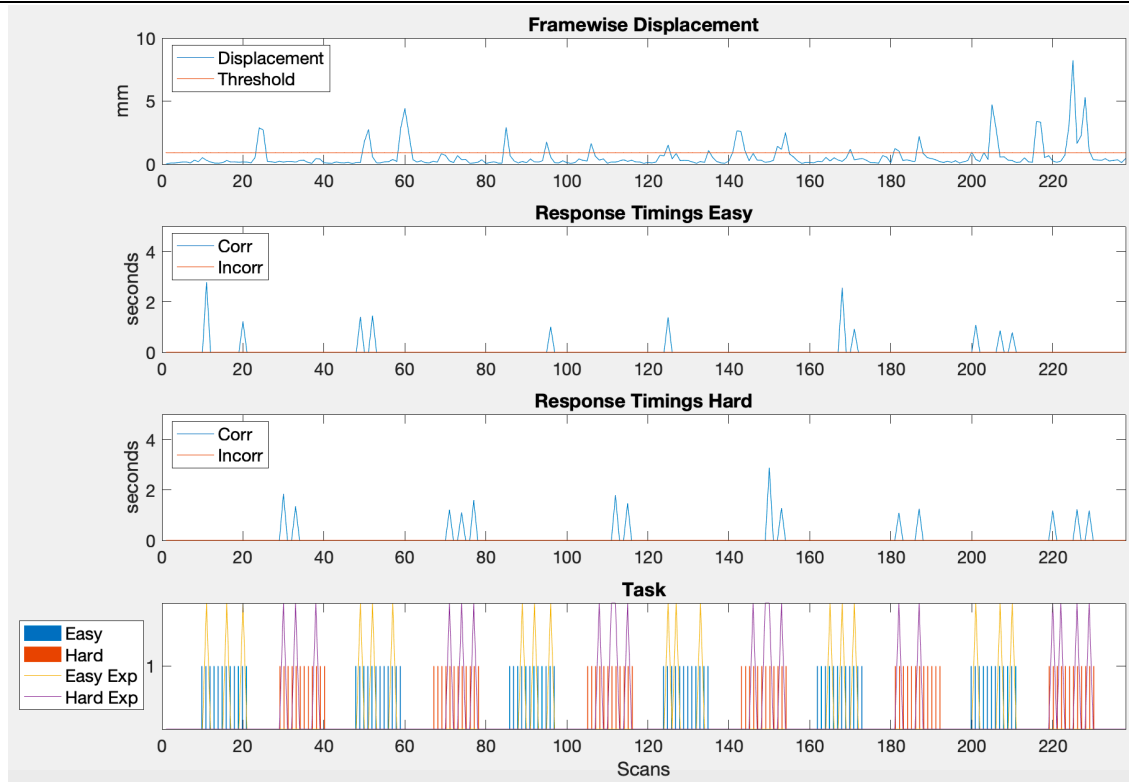


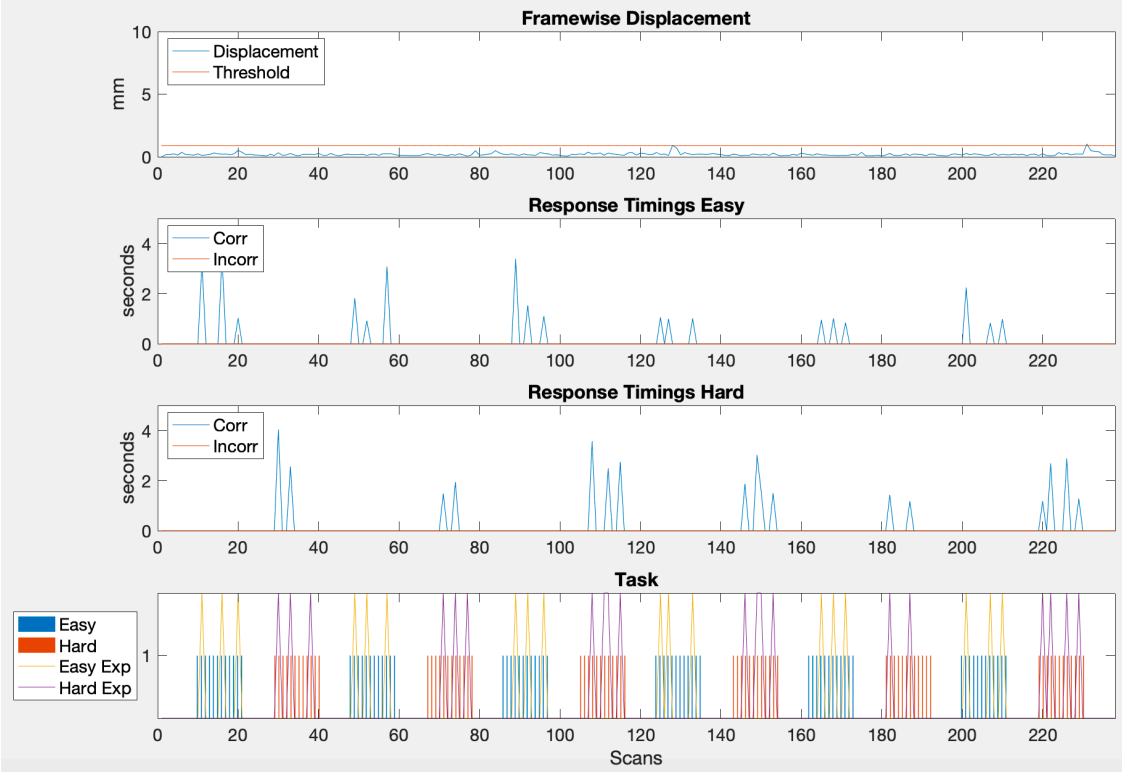


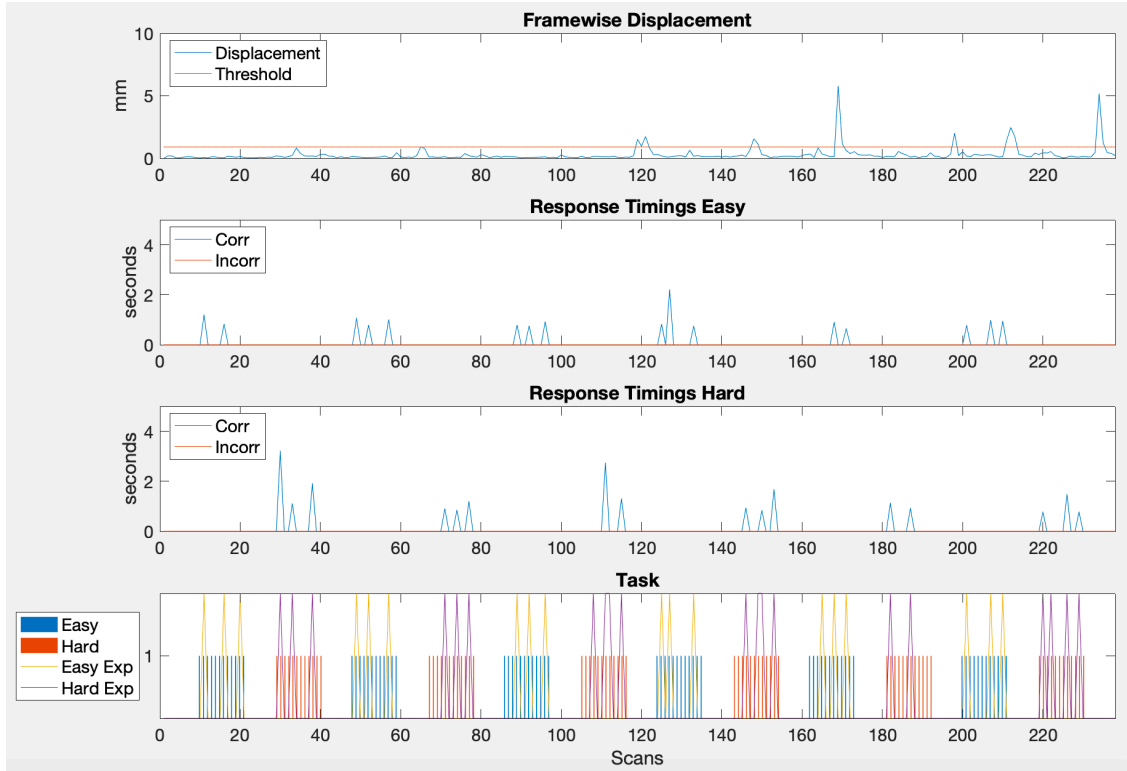


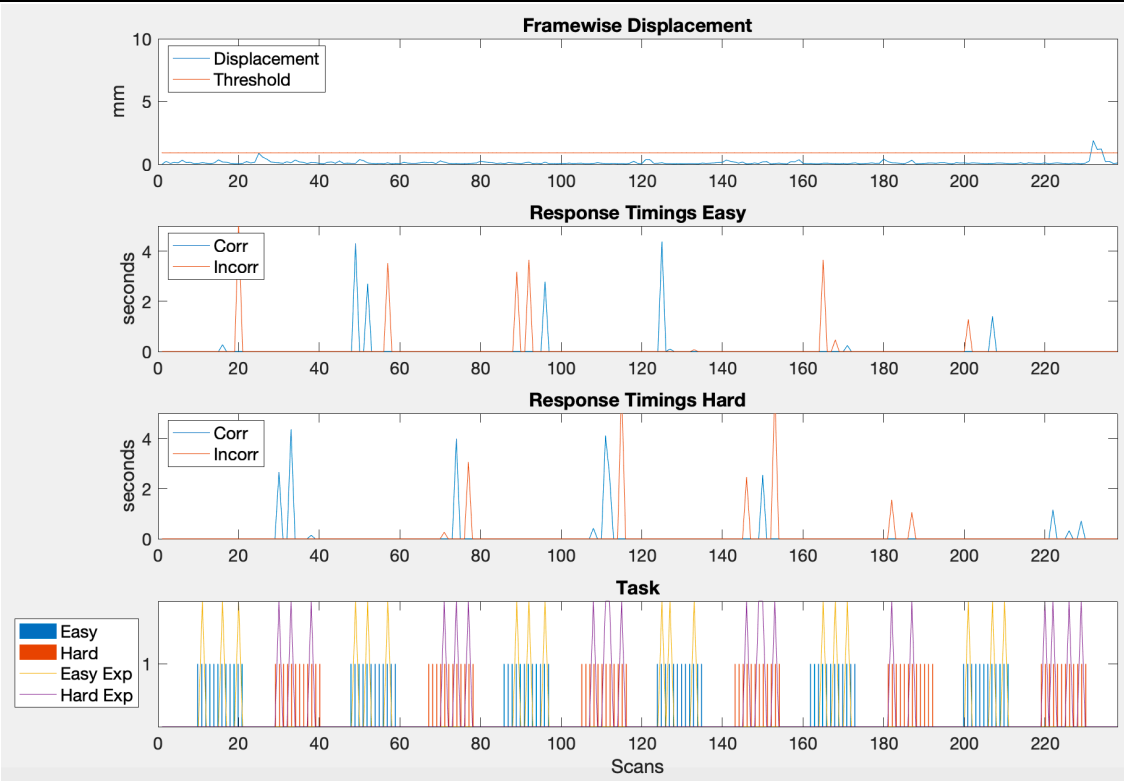


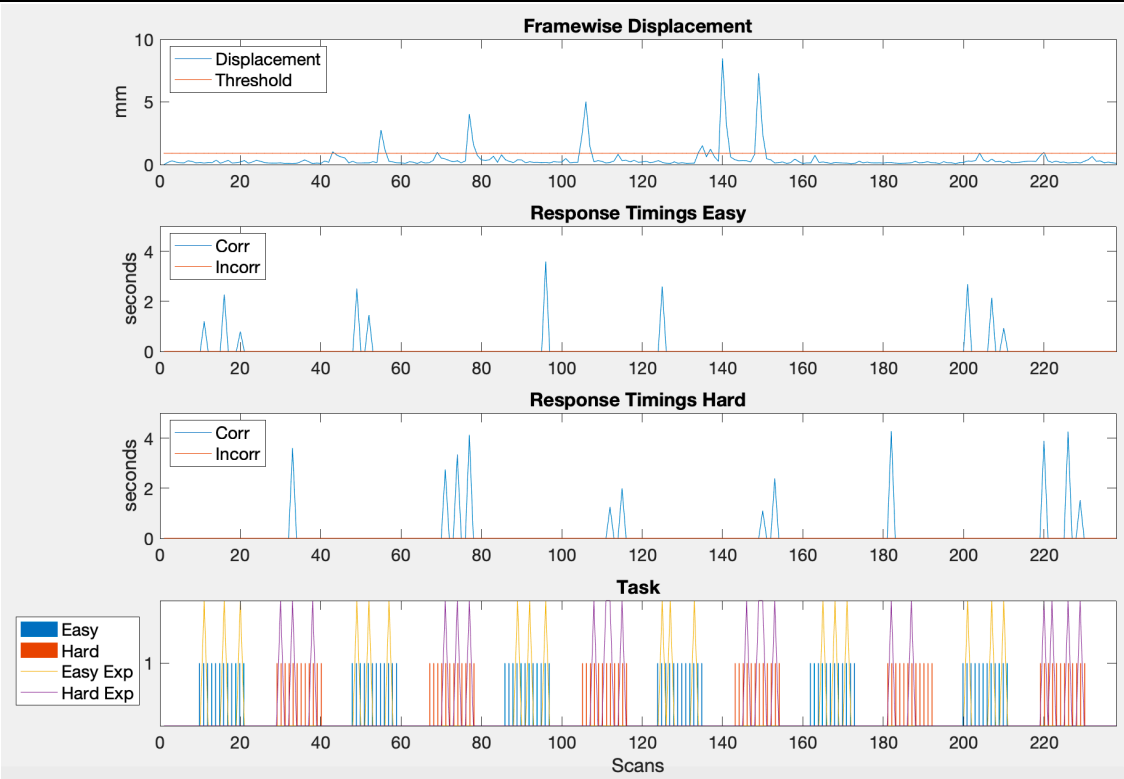


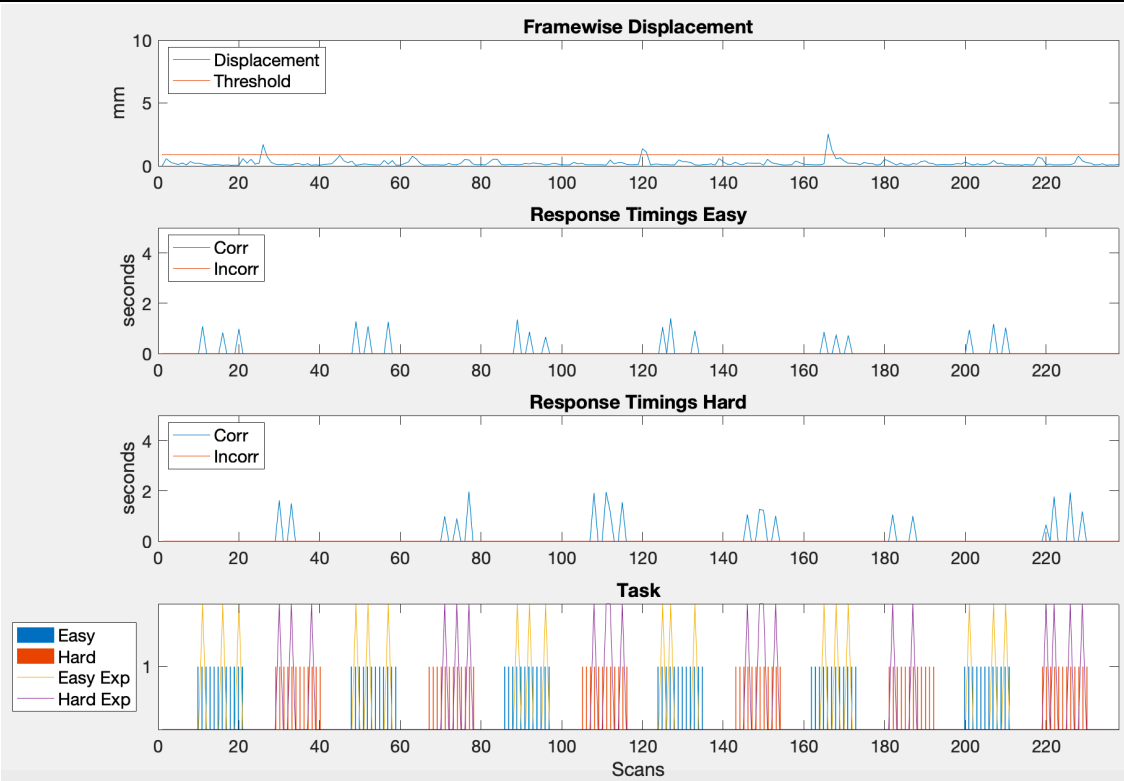












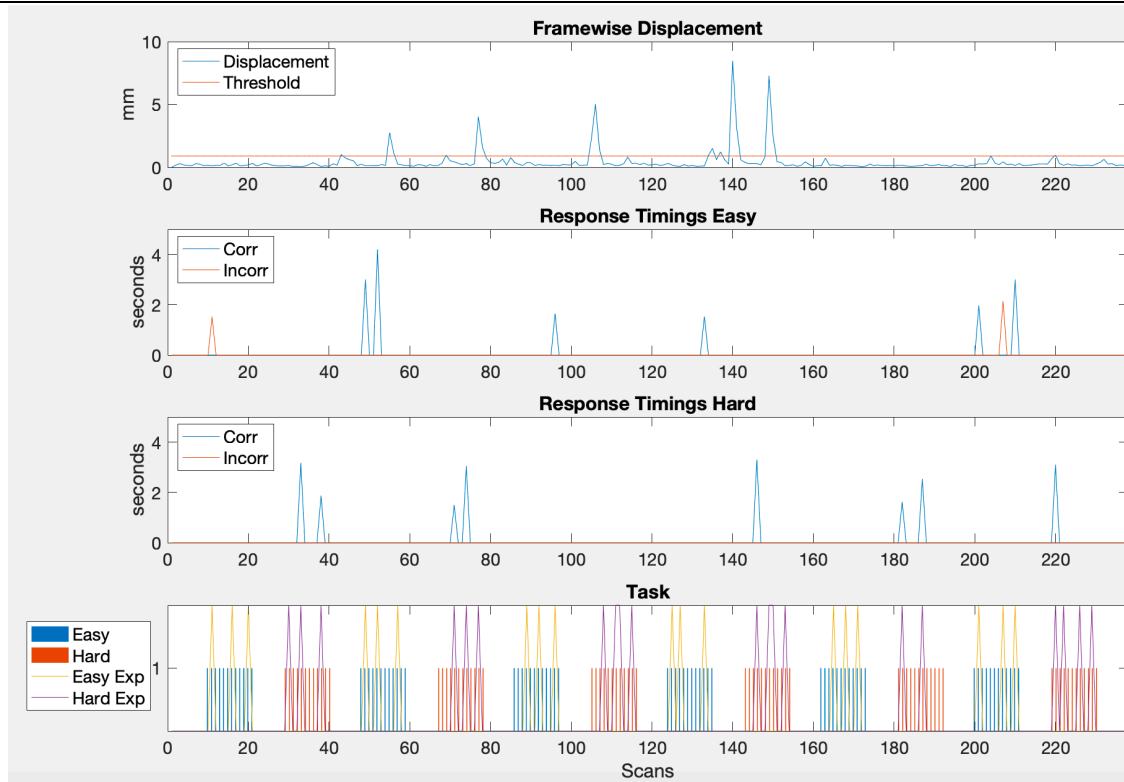


Table S4: List of activations from a group analysis using FSL. Easy and hard levels for controls and EPT subjects are reported for early stopping and full scan durations. Thresholds of $p < 0.001$ uncorrected and minimum cluster extent = 10 voxels have been applied.

Group	Cluster No.	Coordinates (MNI)	No. of Voxels	Peak z-score	Side	Location
2-Block						
Early stopping:						
Easy						
EPT	1	32 -60 40	283	7.62	Right	Precuneus
	2	-6 8 48	274	6.32	Left	Cingulate Gyrus
	3	-40 16 0	30	3.67	Left	Insula
	4	-54 10 0	28	6.87	Left	Superior Temporal Gyrus
	5	-50 4 38	15	4.37	Left	Precentral Gyrus
	6	-42 8 30	14	4.89	Left	Inferior Frontal Gyrus

	7	-42 -6 40	13	4.55	Left	Precentral Gyrus
	8	-28 -60 42	13	6.15	Left	Precuneus
	9	36 16 4	11	3.87	Right	Clastrum
	10	6 -28 10	10	3.94	Right	Thalamus
Control	1	-46 2 28	652	7.07	Left	Precentral Gyrus
	2	42 -44 46	498	8.88	Right	Inferior Parietal Lobule
	3	-12 16 32	292	6.44	Left	Cingulate Gyrus
	4	-48 -40 40	231	6.13	Left	Supramarginal Gyrus
	5	-8 0 50	124	5.38	Left	Cingulate Gyrus
	6	20 -32 18	96	3.84	Right	Caudate
	7	-38 14 -2	28	3.94	Left	Clastrum
	8	40 18 -2	12	3.39	Right	Insula
	9	50 -28 36	11	3.44	Right	Inferior Parietal Lobule
	10	36 -56 64	10	5.2	Right	Superior Parietal Lobule
Hard EPT	1	8 22 34	94	8.43	Right	Cingulate Gyrus
	2	-8 8 50	56	6.79	Left	Medial Frontal Gyrus
	3	-20 10 30	38	4.08	Left	Cingulate Gyrus
	4	40 -40 46	33	7.87	Right	Inferior Parietal Lobule
	5	-12 16 34	31	6.24	Left	Cingulate Gyrus
	6	-34 16 28	31	5.05	Left	Inferior Frontal Gyrus
	7	18 12 62	31	4.9	Right	Medial Frontal Gyrus
	8	-40 0 30	29	6.9	Left	Precentral Gyrus
	9	-36 -4 58	19	5.52	Left	Precentral Gyrus
	10	-38 -44 62	15	4.51	Left	Inferior Parietal Lobule
	11	32 -46 64	10	5.06	Right	Superior Parietal Lobule
	12	2 16 56	10	4.82	Left	Superior Frontal Gyrus
Control	1	-8 20 30	1058	7.92	Left	Cingulate Gyrus
	2	-46 4 30	420	10.3	Left	Precentral Gyrus
	3	-48 -38 42	384	5.92	Left	Supramarginal Gyrus
	4	40 -44 44	287	8.94	Right	Inferior Parietal Lobule
	5	-56 22 28	177	6.9	Left	Middle Frontal Gyrus

6	12 -12 28	91	4.57	Right	Cingulate Gyrus
7	-18 6 66	53	5.21	Left	Middle Frontal Gyrus
8	-46 -68 -12	47	4.02	Left	Fusiform Gyrus
9	-8 -12 26	22	3.53	Left	Cingulate Gyrus
10	-40 -52 62	21	5.43	Left	Superior Parietal Lobule
11	46 -64 -10	18	3.76	Right	Fusiform Gyrus
12	44 -76 -10	15	3.71	Right	Fusiform Gyrus
13	16 6 64	14	4.58	Right	Superior Frontal Gyrus

4-Block

Early stopping:

Easy

EPT	1	-6 8 46	379	7.25	Left	Cingulate Gyrus
	2	32 -60 40	251	8.73	Right	Precuneus
	3	-42 10 30	51	5.95	Left	Inferior Frontal Gyrus
	4	-28 -60 42	22	7.67	Left	Precuneus
	5	36 18 46	21	3.83	Right	Middle Frontal Gyrus
	6	-52 10 2	14	5.13	Left	Superior Temporal Gyrus
	7	-42 -4 40	11	4.93	Left	Precentral Gyrus
	8	-34 16 4	11	4.2	Left	Insula
	9	38 18 2	11	3.49	Right	Insula

Control	1	-48 2 26	700	8.09	Left	Inferior Frontal Gyrus
	2	42 -44 46	680	9.41	Right	Inferior Parietal Lobule
	3	-8 2 52	675	5.66	Left	Cingulate Gyrus
	4	-48 -40 40	285	7.01	Left	Supramarginal Gyrus
	5	20 -32 18	181	4.53	Right	Caudate
	6	-18 -6 26	181	4.23	Left	Caudate
	7	52 -32 42	15	3.92	Right	Inferior Parietal Lobule
	8	-38 14 -2	14	3.9	Left	Clastrum
	9	18 -10 24	12	3.73	Right	Caudate

Hard

EPT	1	36 -42 48	342	4.99	Right	Precuneus
	2	-10 -2 52	301	4.63	Left	Medial Frontal Gyrus

3	-14 14 34	167	6.15	Left	Cingulate Gyrus
4	-44 0 38	60	5.28	Left	Precentral Gyrus
5	-36 -4 58	32	3.89	Left	Precentral Gyrus
6	12 20 28	17	5.21	Right	Cingulate Gyrus
7	-30 -58 42	15	4.02	Left	Angular Gyrus
8	-32 16 34	14	3.85	Left	Middle Frontal Gyrus

Control	1	-6 20 32	731	8.54	Left	Cingulate Gyrus
	2	40 -44 44	364	9.74	Right	Inferior Parietal Lobule
	3	-44 12 24	335	7.29	Left	Inferior Frontal Gyrus
	4	-48 -38 42	227	6.54	Left	Supramarginal Gyrus
	5	-14 -6 22	75	4.14	Left	Caudate
	6	-44 34 30	46	4.05	Left	Middle Frontal Gyrus
	7	-46 20 20	45	5.13	Left	Middle Frontal Gyrus
	8	-16 -24 22	29	4.21	Left	Caudate
	9	40 10 26	24	4.22	Right	Precentral Gyrus
	10	8 8 24	17	3.92	Right	Cingulate Gyrus
	11	-42 -46 62	17	5.5	Left	Inferior Parietal Lobule
	12	10 -12 28	15	4.43	Right	Cingulate Gyrus
	13	16 -22 22	13	3.79	Right	Caudate
	14	20 -10 26	13	3.44	Right	Caudate
	15	-36 28 22	10	4.25	Left	Middle Frontal Gyrus

Full duration:

Easy

EPT	1	28 -56 50	150	4.93	Right	Superior Parietal Lobule
	2	-10 8 44	144	4.49	Left	Cingulate Gyrus
	3	-40 12 32	44	4.81	Left	Precentral Gyrus
	4	52 20 38	28	5.48	Right	Middle Frontal Gyrus
	5	32 18 44	28	4.54	Right	Middle Frontal Gyrus
	6	-30 -60 44	17	4.30	Left	Angular Gyrus
	7	8 30 38	14	4.16	Right	Cingulate Gyrus
	8	46 14 28	13	5.75	Right	Precentral Gyrus

Control	1	-46 0 26	754	6.52	Left	Inferior Frontal Gyrus
	2	40 -44 46	612	9.21	Right	Inferior Parietal Lobule
	3	-12 14 36	573	6.05	Left	Cingulate Gyrus
	4	-36 -46 44	225	9.53	Left	Inferior Parietal Lobule
	5	20 -30 18	65	5.06	Right	Caudate
	6	-40 18 -2	17	3.62	Left	Insula
Hard EPT	1	-14 14 34	446	6.78	Left	Cingulate Gyrus
	2	36 -42 48	418	5.93	Right	Precuneus
	3	-44 2 38	66	5.09	Left	Precentral Gyrus
	4	-30 -58 42	40	4.31	Left	Angular Gyrus
	5	-50 22 24	15	3.65	Left	Inferior Frontal Gyrus
	6	-32 16 34	15	3.98	Left	Middle Frontal Gyrus
	7	8 0 68	14	4.2	Right	Medial Frontal Gyrus
	8	12 4 28	11	4.26	Right	Cingulate Gyrus
	9	-10 -4 66	11	3.68	Left	Medial Frontal Gyrus
	10	40 10 26	10	4.25	Right	Precentral Gyrus
Control	1	-10 14 36	680	7.70	Left	Cingulate Gyrus
	2	38 -44 44	590	9.12	Right	Inferior Parietal Lobule
	3	-34 -46 44	277	9.47	Left	Inferior Parietal Lobule
	4	-44 0 28	259	5.16	Left	Precentral Gyrus
	5	-46 22 22	128	5.00	Left	Middle Frontal Gyrus
	6	-16 -24 22	68	4.02	Left	Caudate
	7	20 -32 18	63	3.94	Right	Caudate
	8	-40 16 -6	45	5.62	Left	Insula
	9	-22 6 66	12	3.43	Left	Superior Frontal Gyrus
	10	0 -86 6	11	3.69	Left	Lingual Gyrus
