

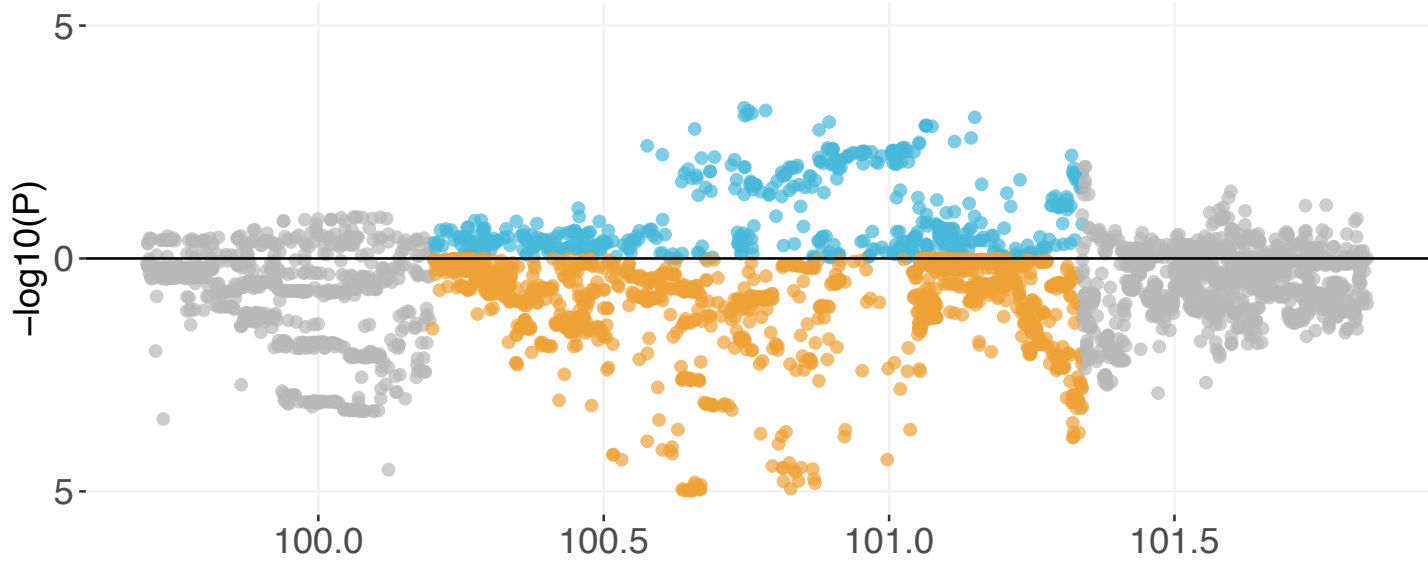
Contents

Supplementary Figures	3 - 12
Region mirror Manhattan plots for 14 local regions across 14 phenotypes with significant local genetic correlations with IPF tested using SUPERGNOVA (FDR < 0.05). P values from IPF GWAS summary statistics are plotted on the top and P values for the SNPs located within the significant SUPERGNOVA region is highlighted in blue. P values from another trait's summary statistics are plotted on the bottom and P values for the SNPs located within the significant SUPERGNOVA region is highlighted in yellow.	

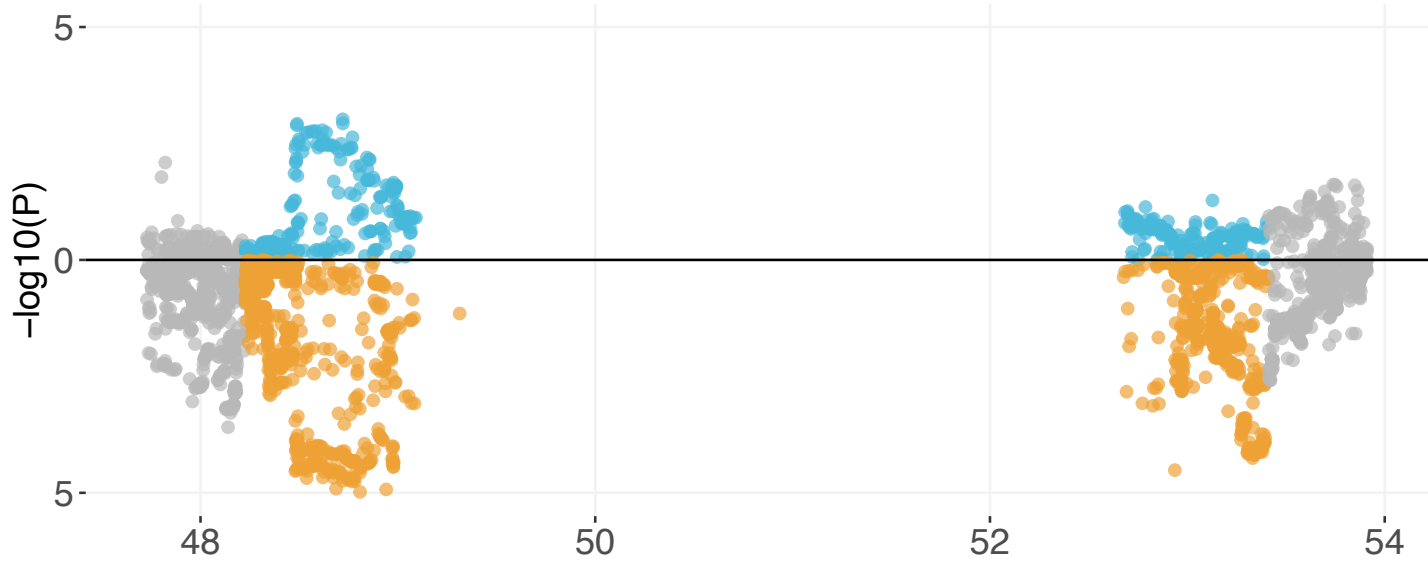
Supplementary Tables

S Table 1: Phenotype-level correlations	13
S Table 2: Polygenic risk score correlations	13
S Table 3: Global genetic correlations	14
S Table 4: Significant local regions from SUPERGNOVA	15
S Table 5: TWAS UTMOST results	16
S Table 6: Differential gene expression analysis	17
S Table 7: Partitioned heritability results	18
S Table 8: <i>MAFK</i> and <i>SMAD2</i> target gene set from CHIP-Atlas	19
S Table 9A: Enrichment analysis of <i>MAFK</i> targets	20 - 24
S Table 9B: Enrichment analysis of <i>SMAD2</i> targets	25 - 28
S Table 10: GWAS study information	29

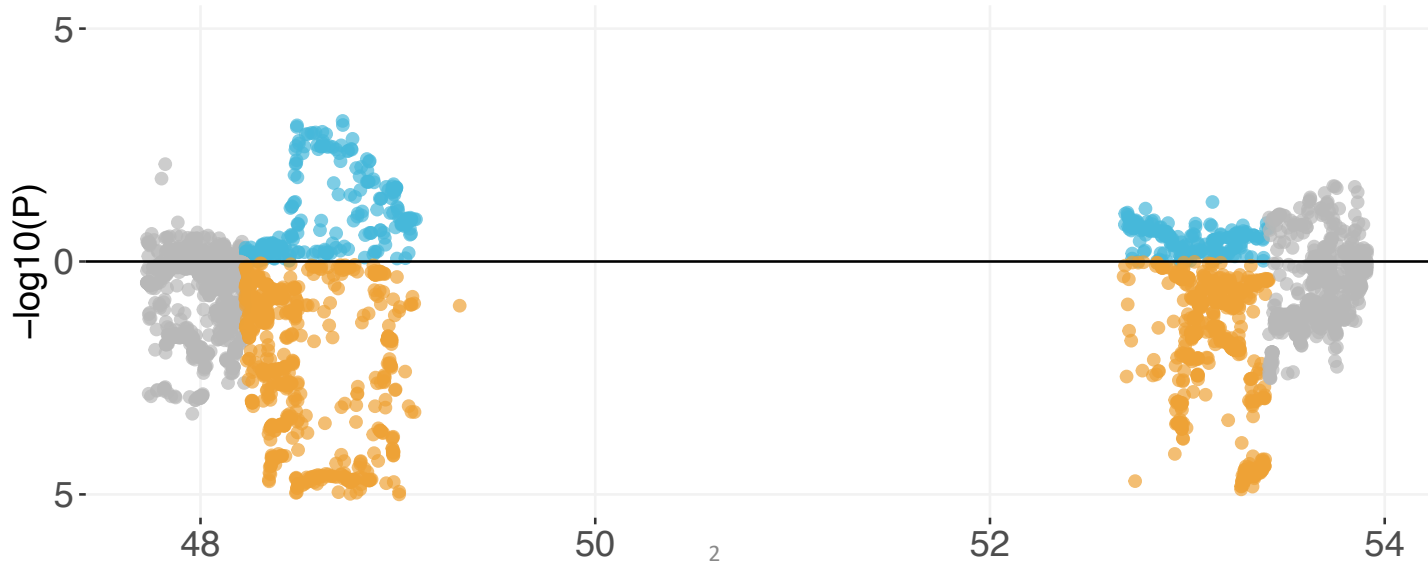
IPF vs BFP at chromosome 2:100197638-101338509



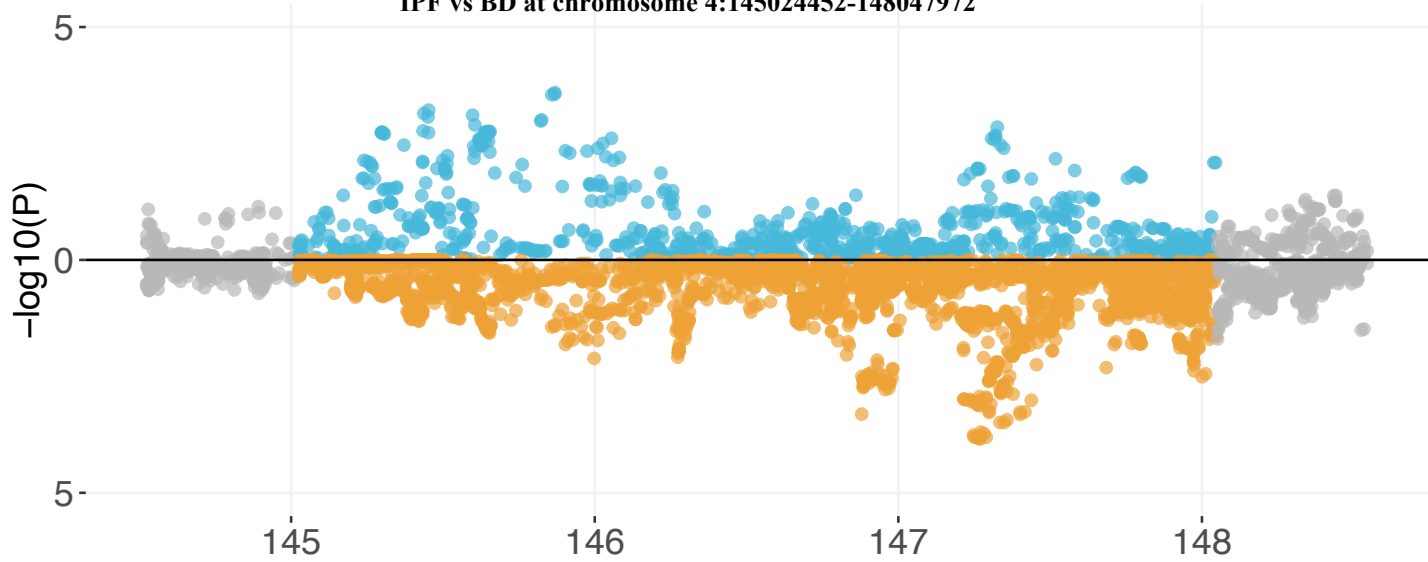
IPF vs HC at chromosome 4:48227642-53412129



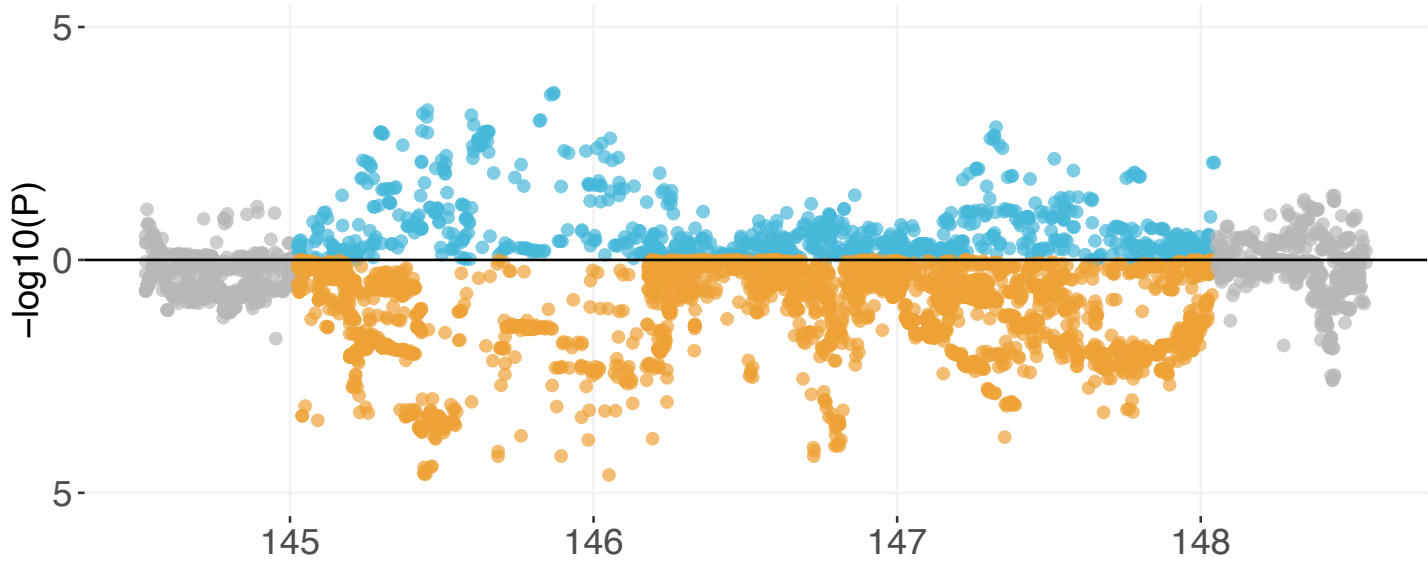
IPF vs WBF at chromosome 4:48227642-53412129



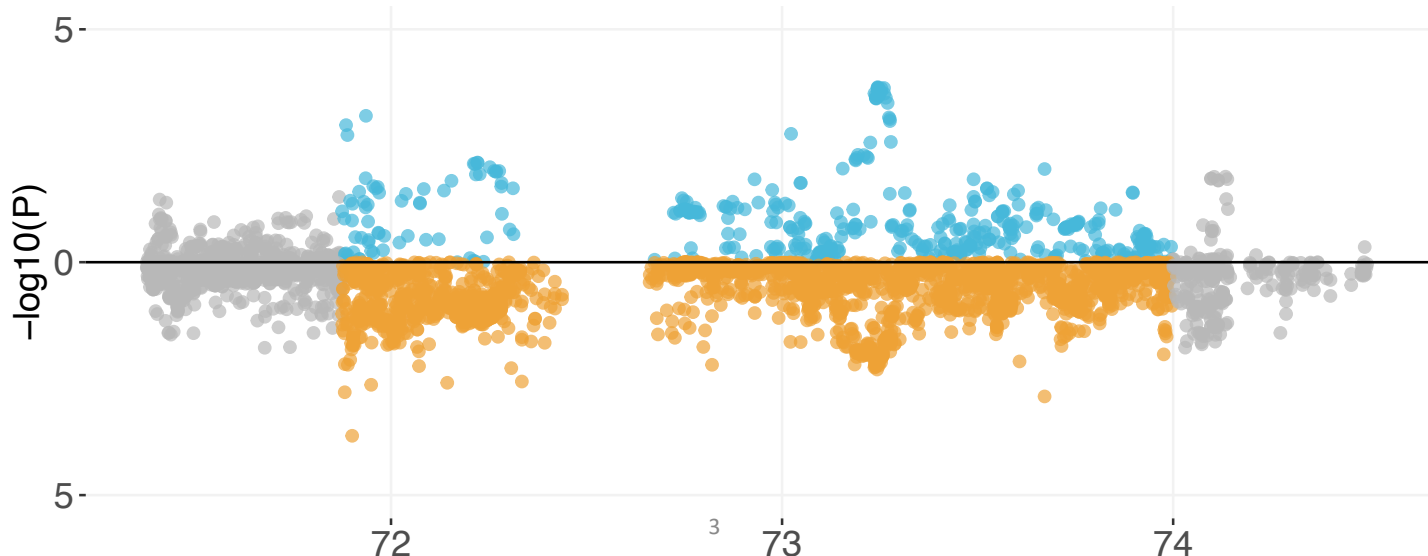
IPF vs BD at chromosome 4:145024452-148047972



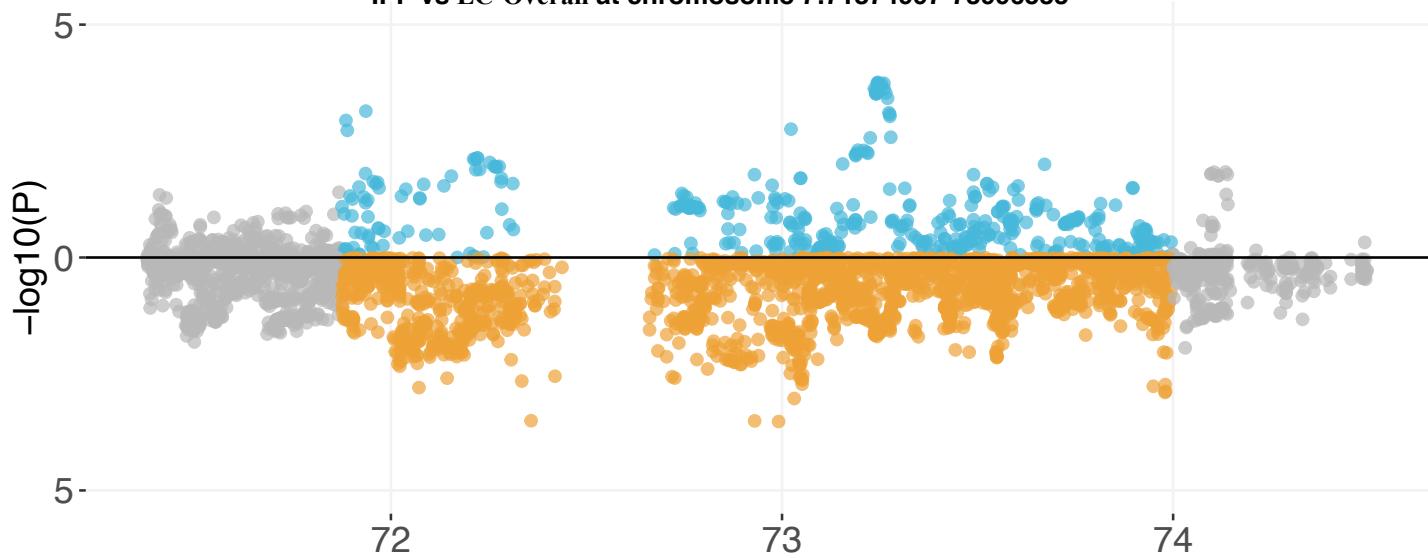
IPF vs HC at chromosome 4:145024452-148047972



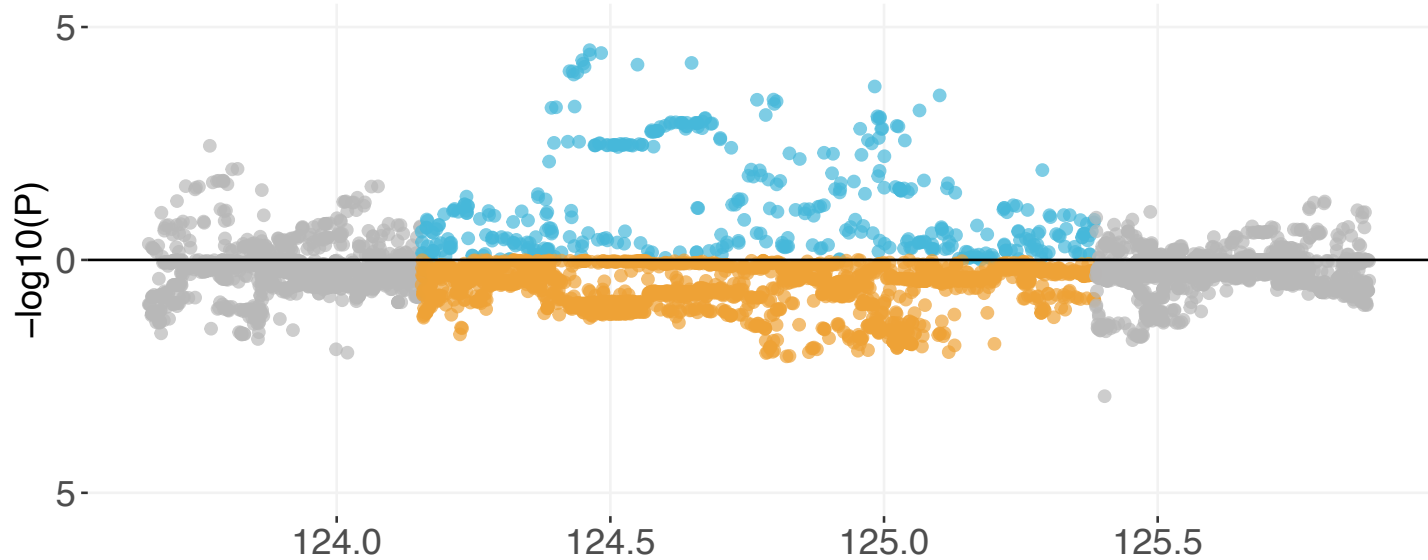
IPF vs LC-Adeno at chromosome 7:71874997-73996533



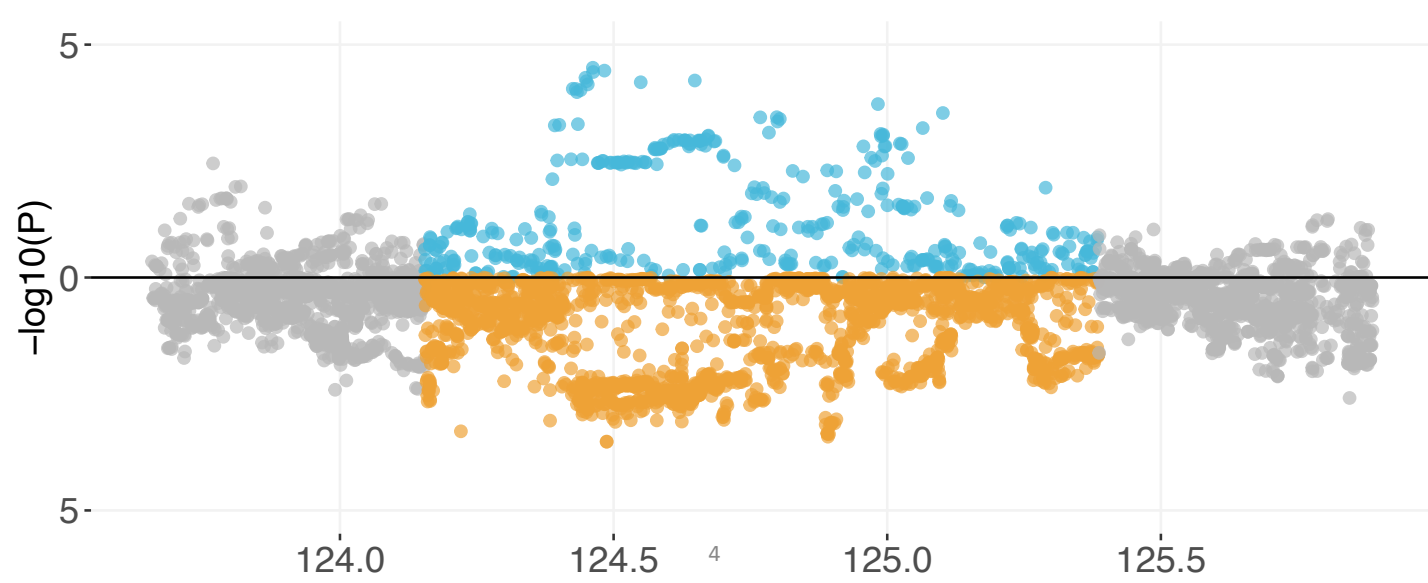
IPF vs LC-Overall at chromosome 7:71874997-73996533



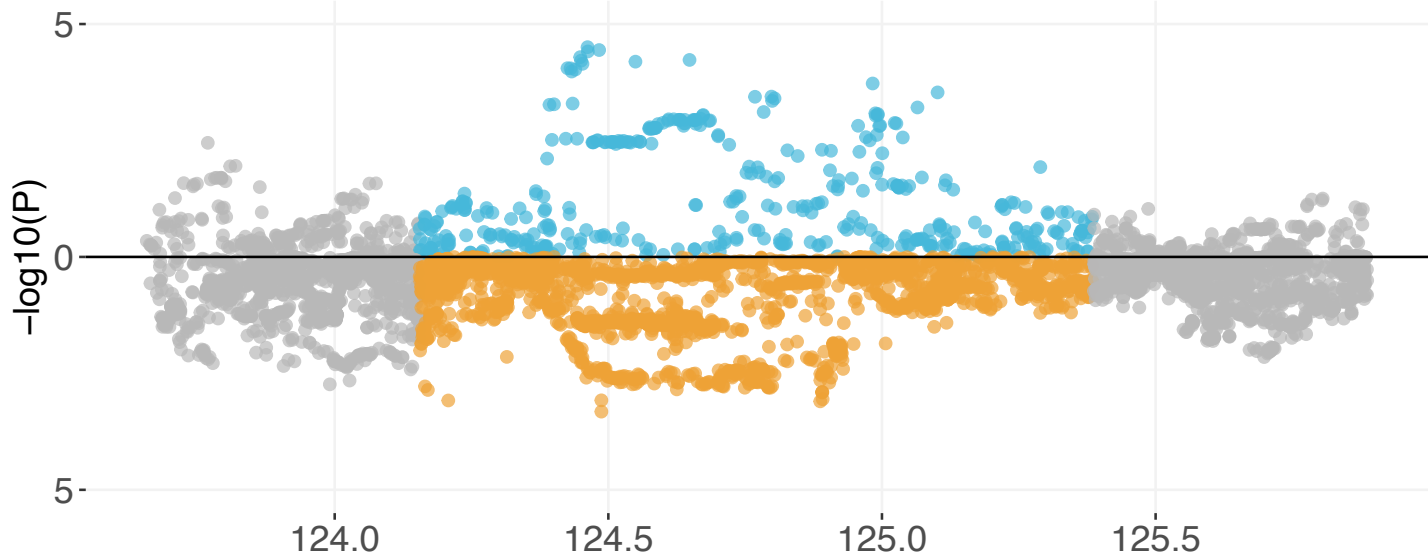
IPF vs GERD at chromosome 7:124155319-125386718



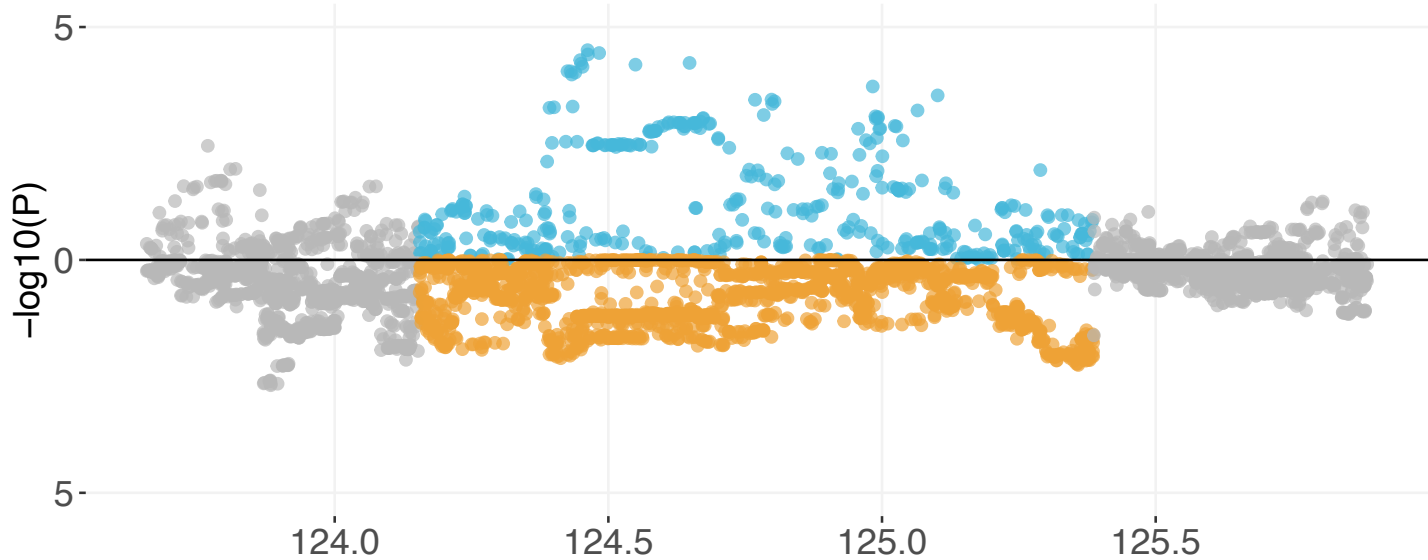
IPF vs LC-Adeno at chromosome 7:124155319-125386718



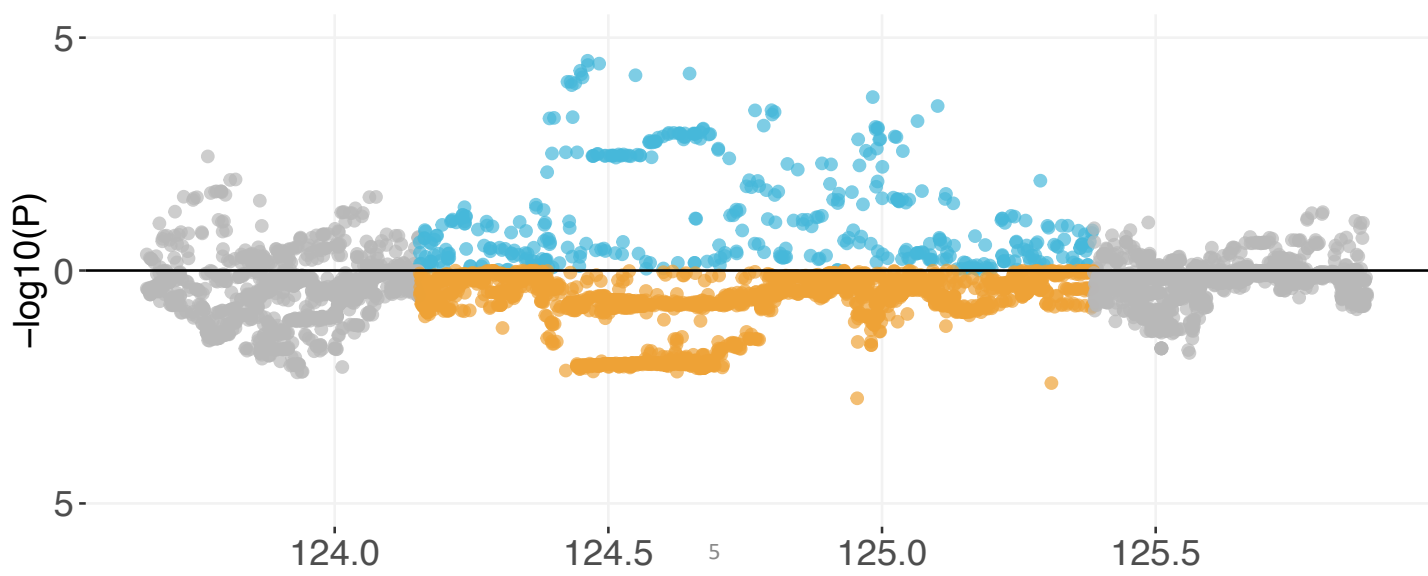
IPF vs LC-Ever at chromosome 7:124155319-125386718



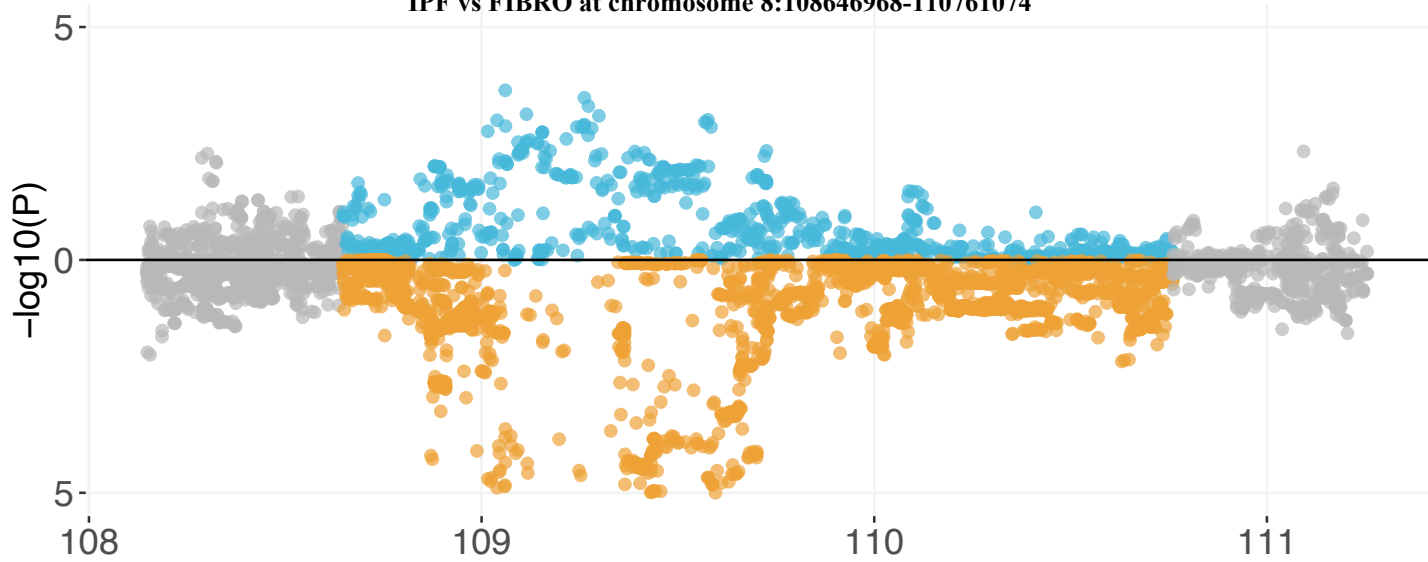
IPF vs PC at chromosome 7:124155319-125386718



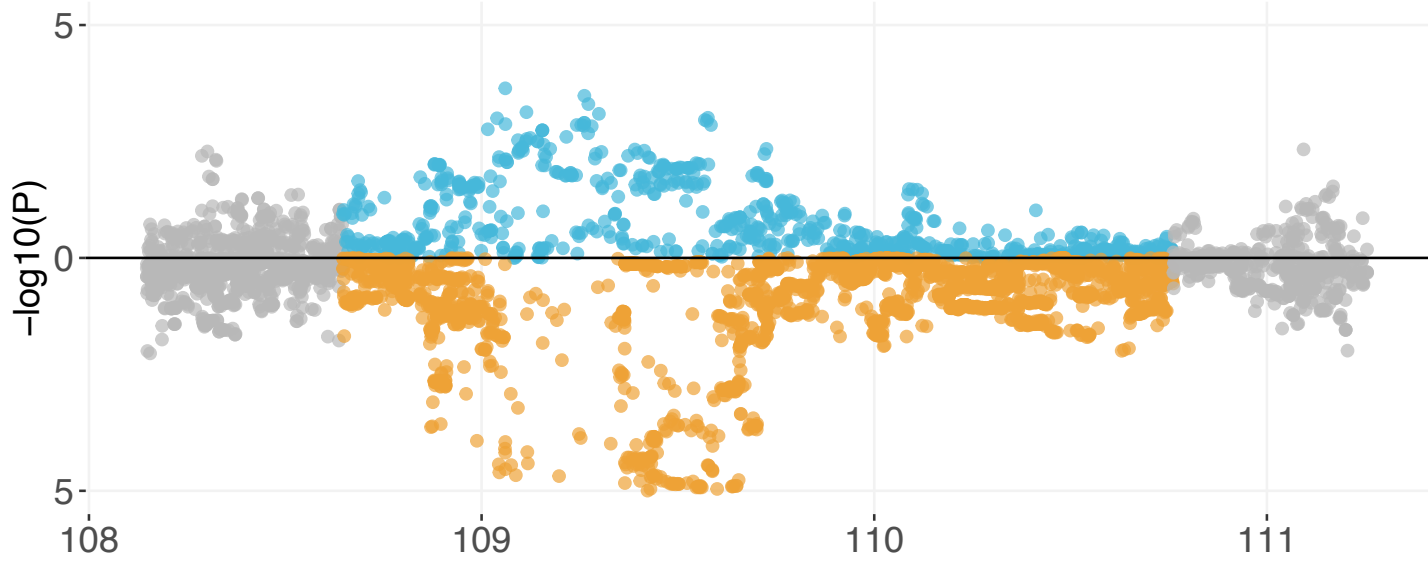
IPF vs SKIN at chromosome 7:124155319-125386718



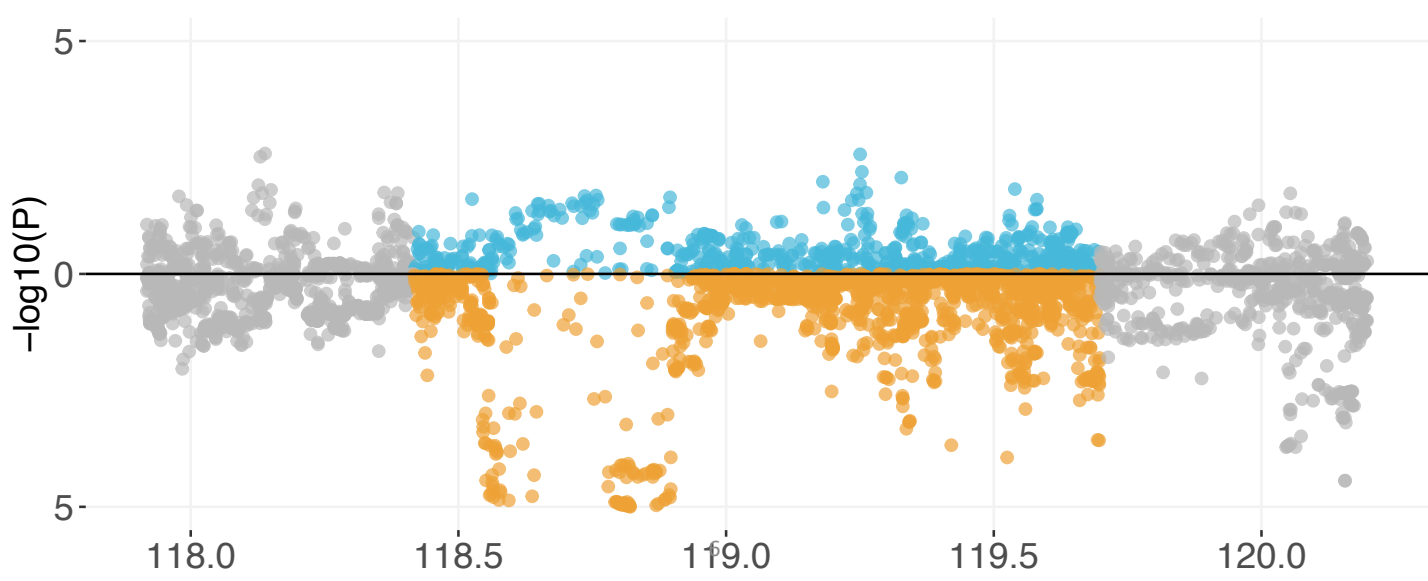
IPF vs FIBRO at chromosome 8:108646968-110761074



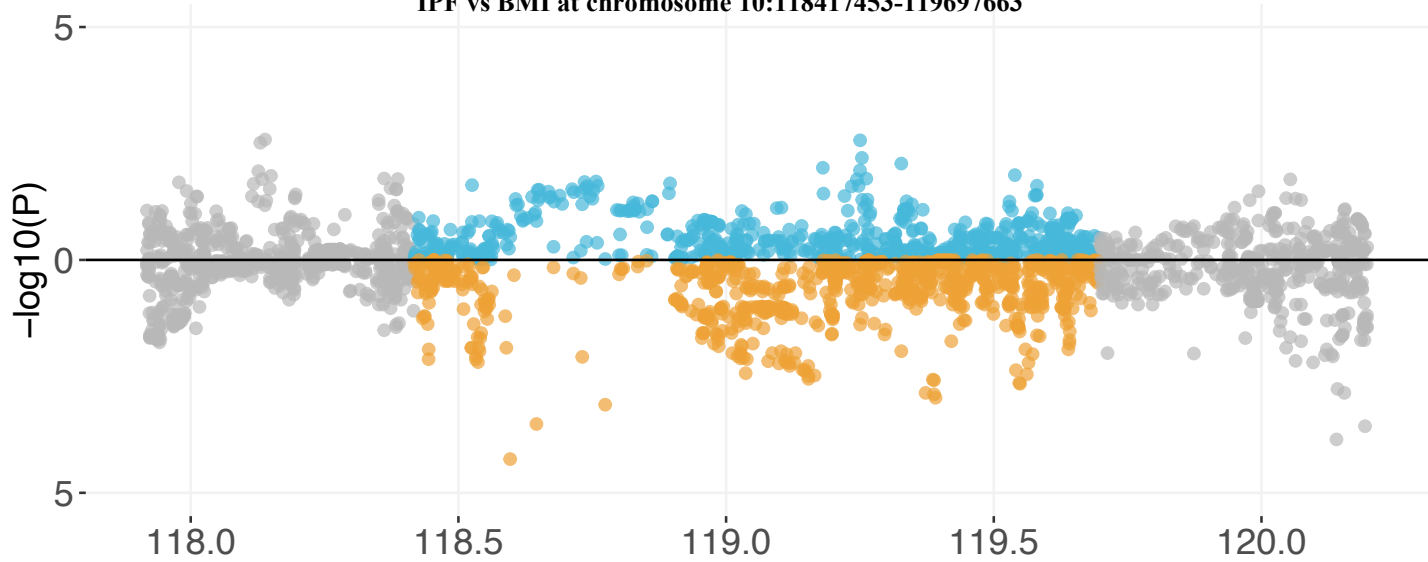
IPF vs PFF at chromosome 8:108646968-110761074



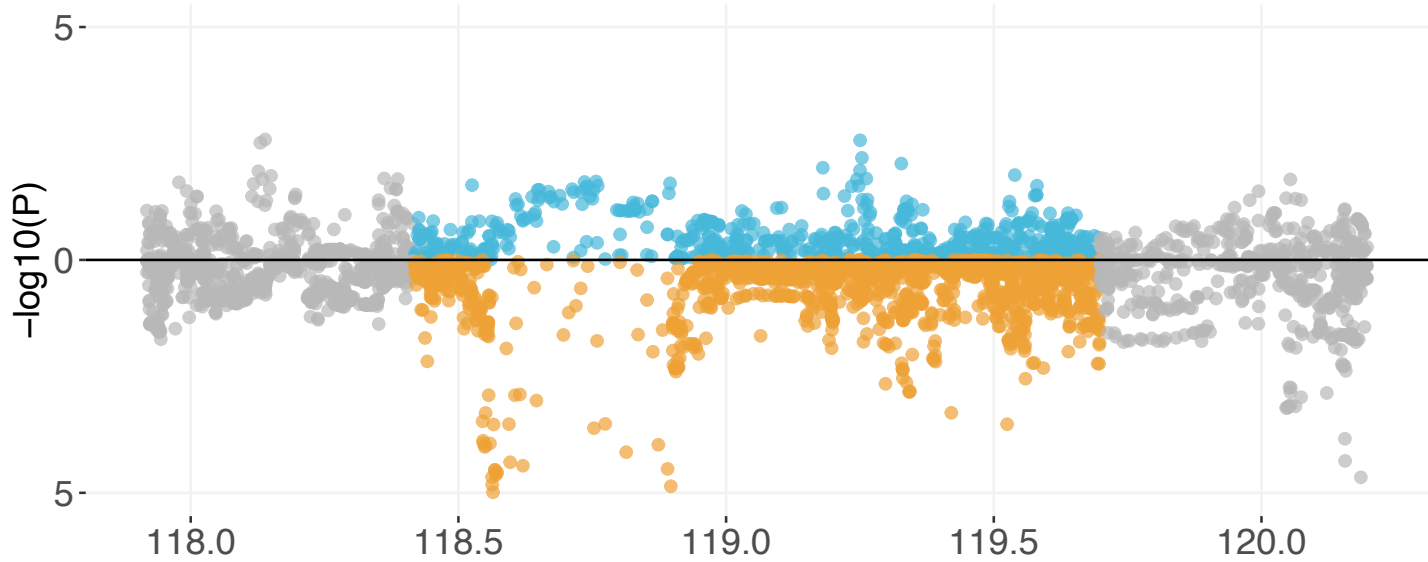
IPF vs BFP at chromosome 10:118417453-119697663



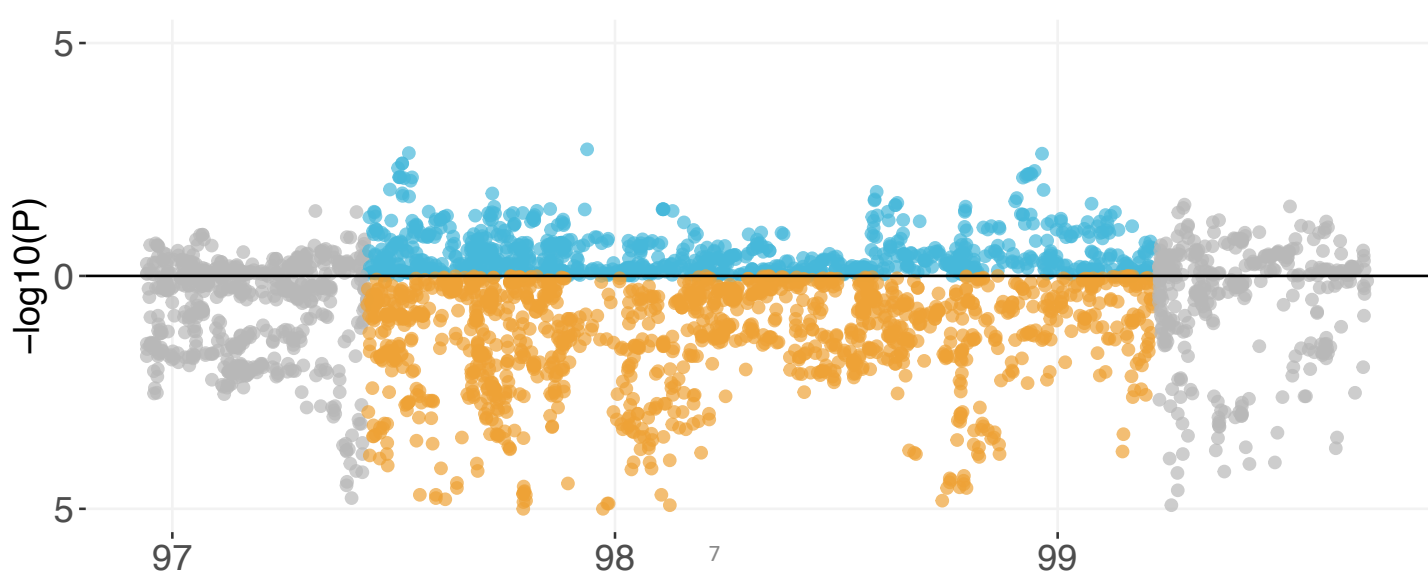
IPF vs BMI at chromosome 10:118417453-119697663



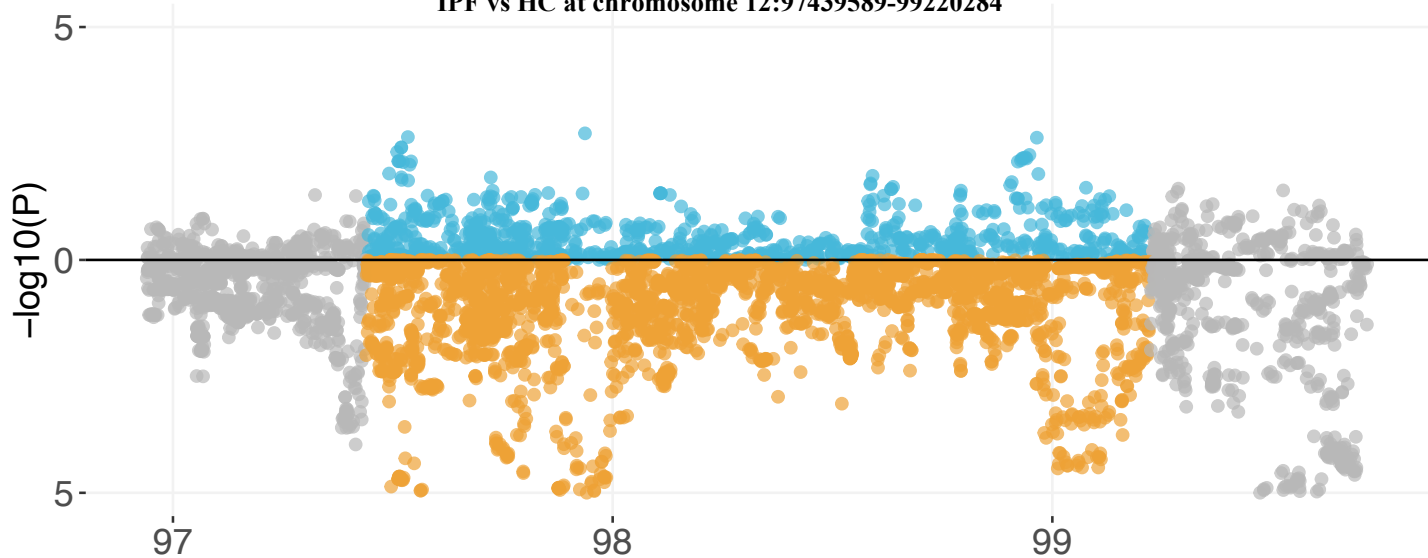
IPF vs WBF at chromosome 10:118417453-119697663



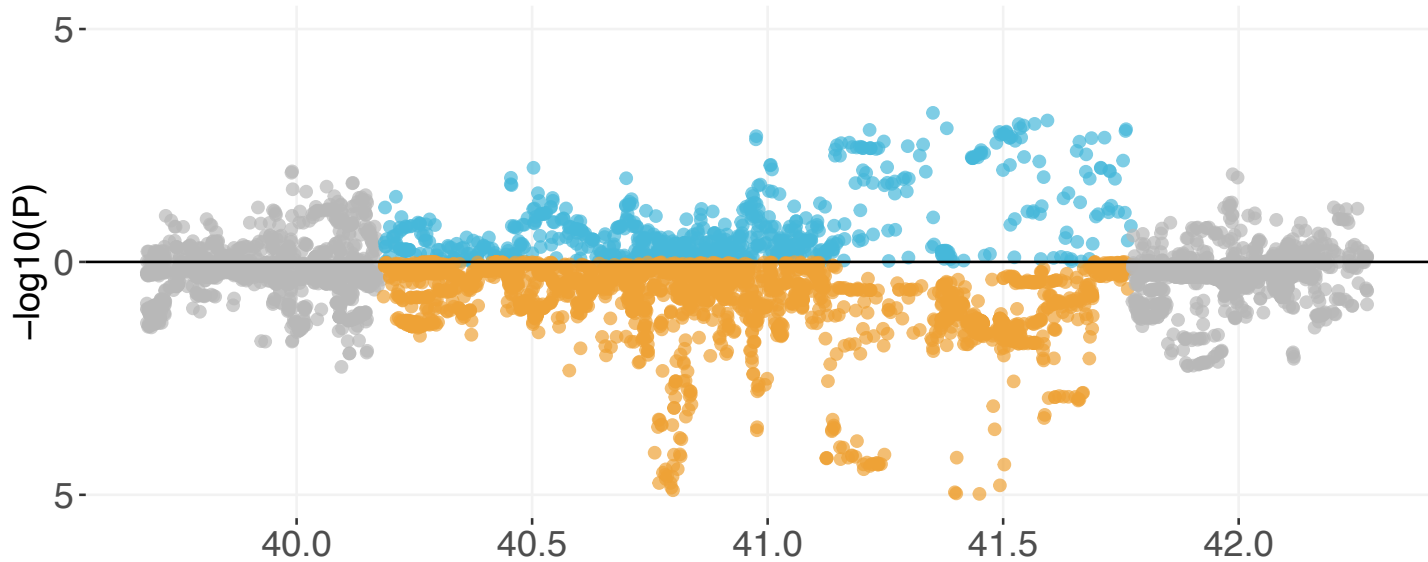
IPF vs BMI at chromosome 12:97439589-99220284



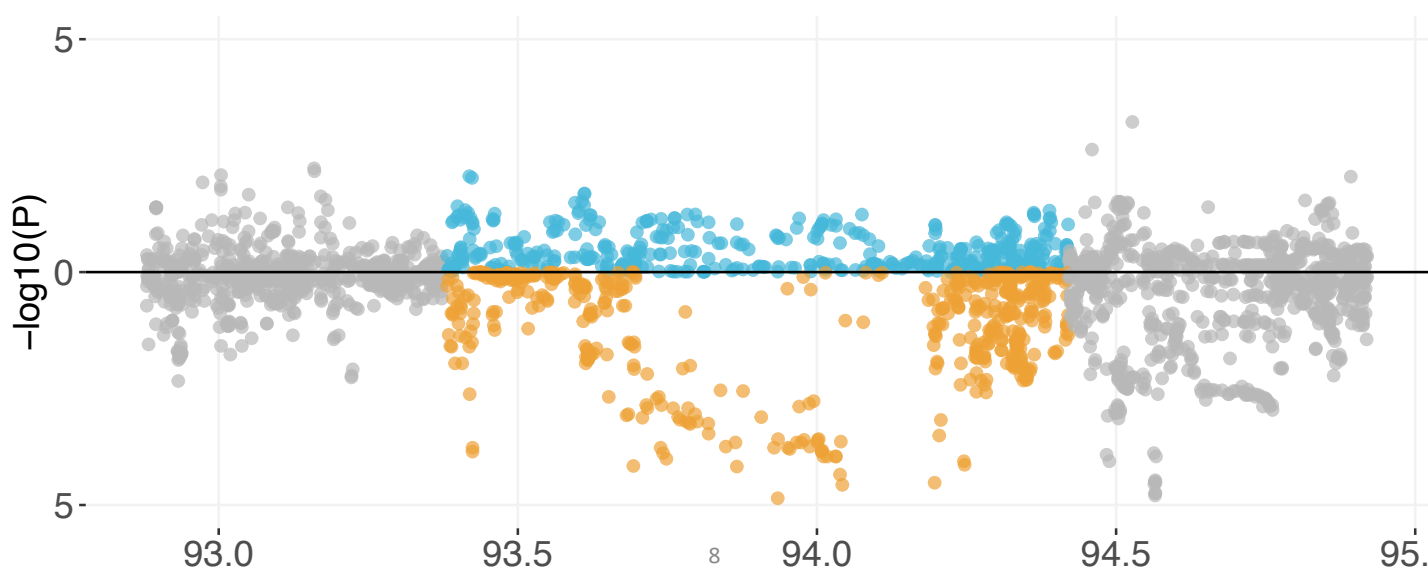
IPF vs HC at chromosome 12:97439589-99220284



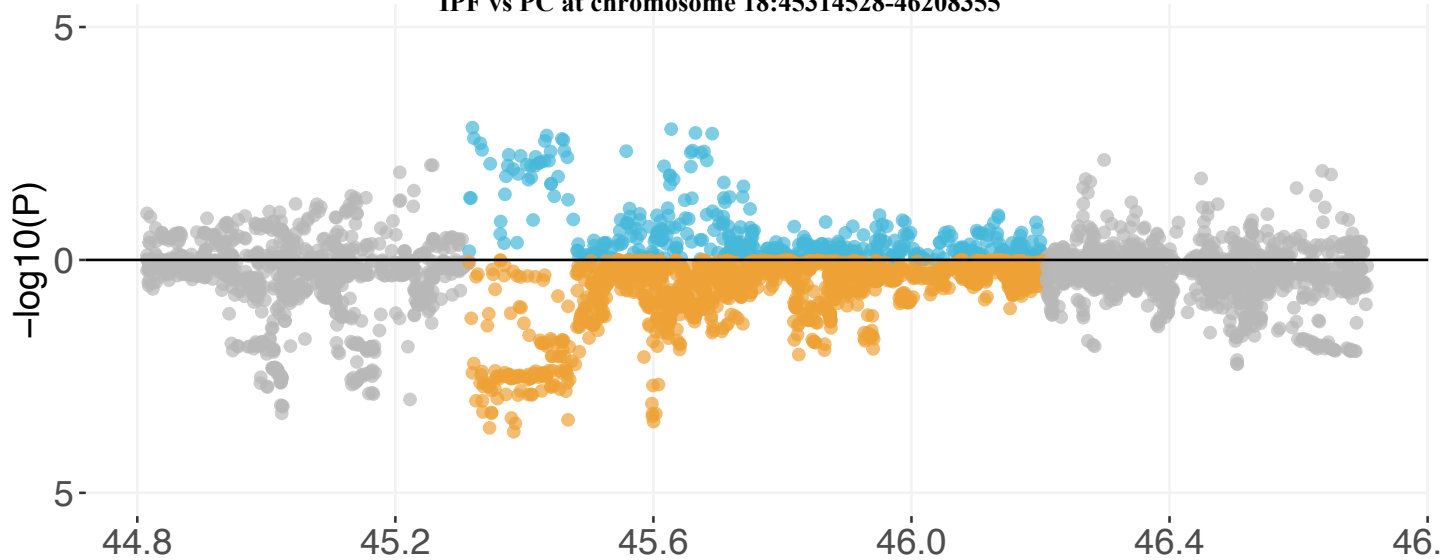
IPF vs HC at chromosome 13:40181792-41773356



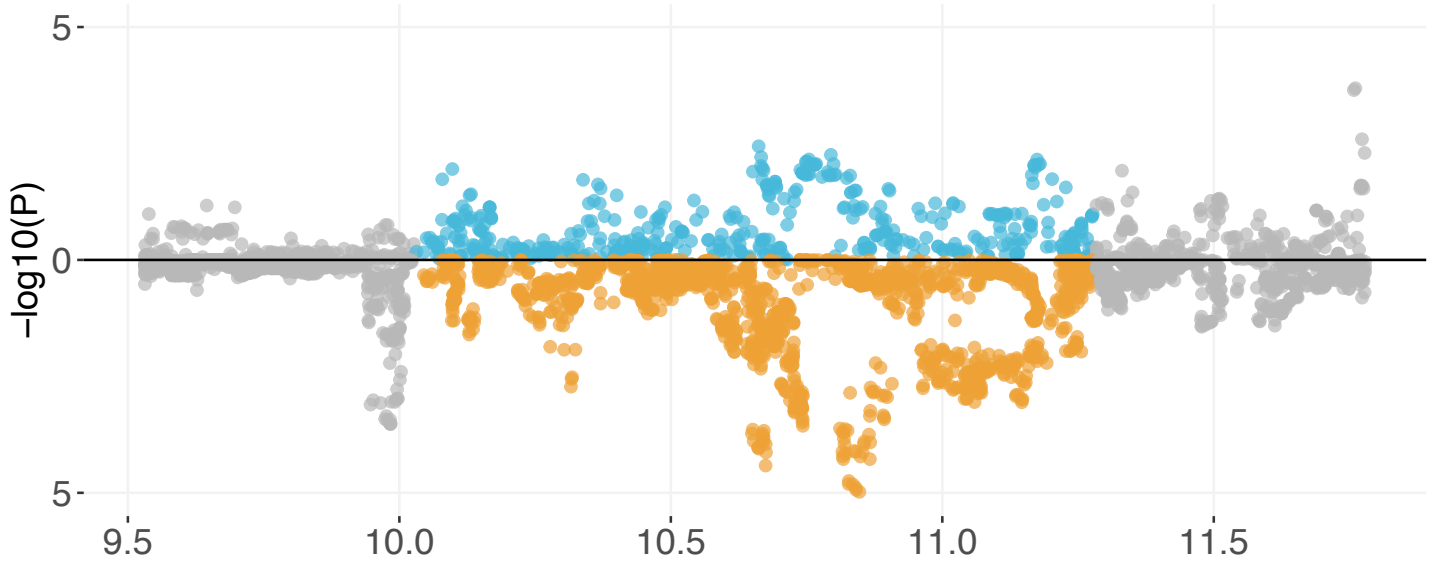
IPF vs BMI at chromosome 14:93379151-94420996



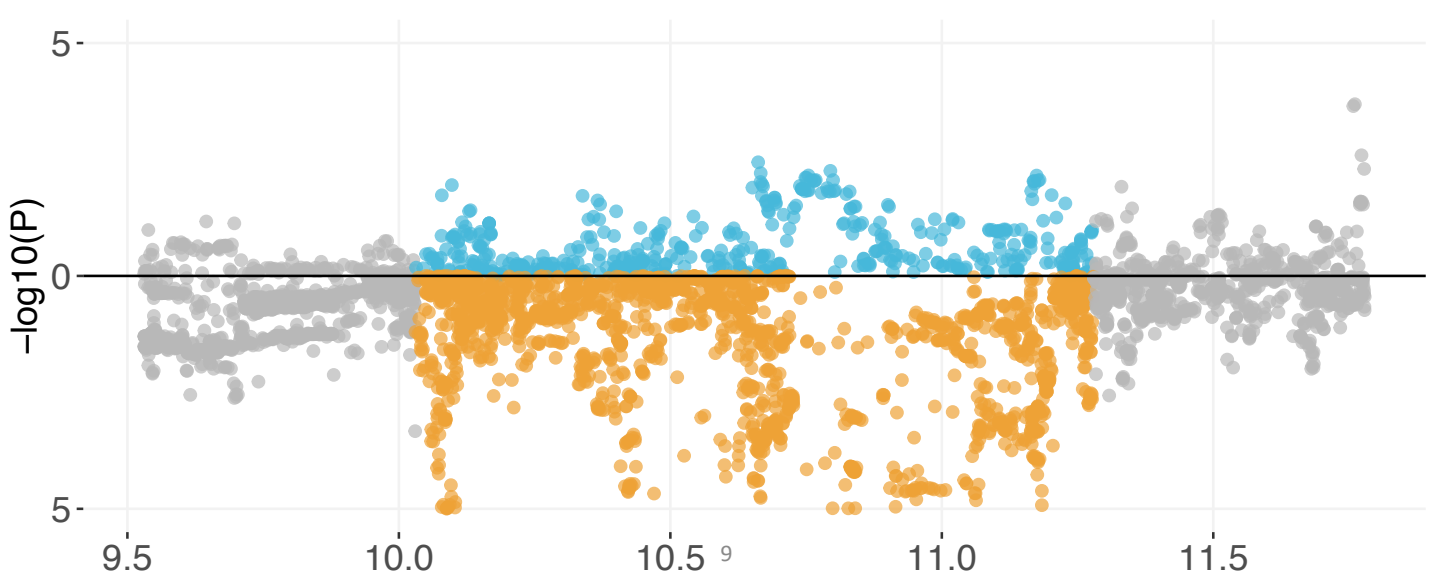
IPF vs PC at chromosome 18:45314528-46208355



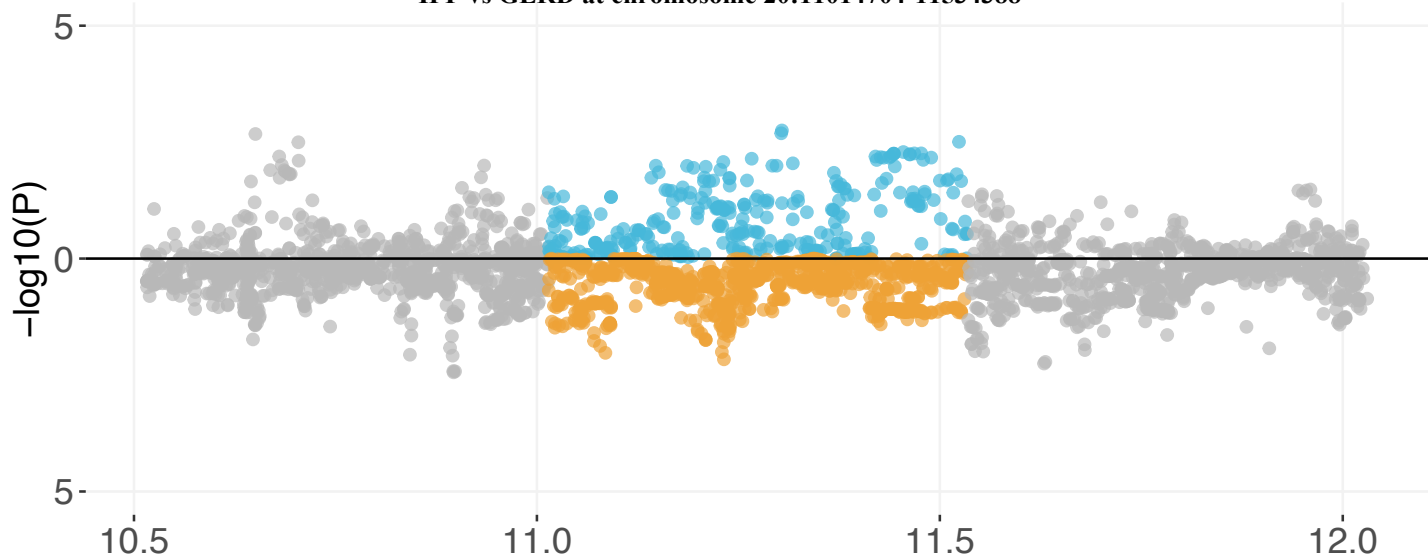
IPF vs BD at chromosome 19:10030690-11279257



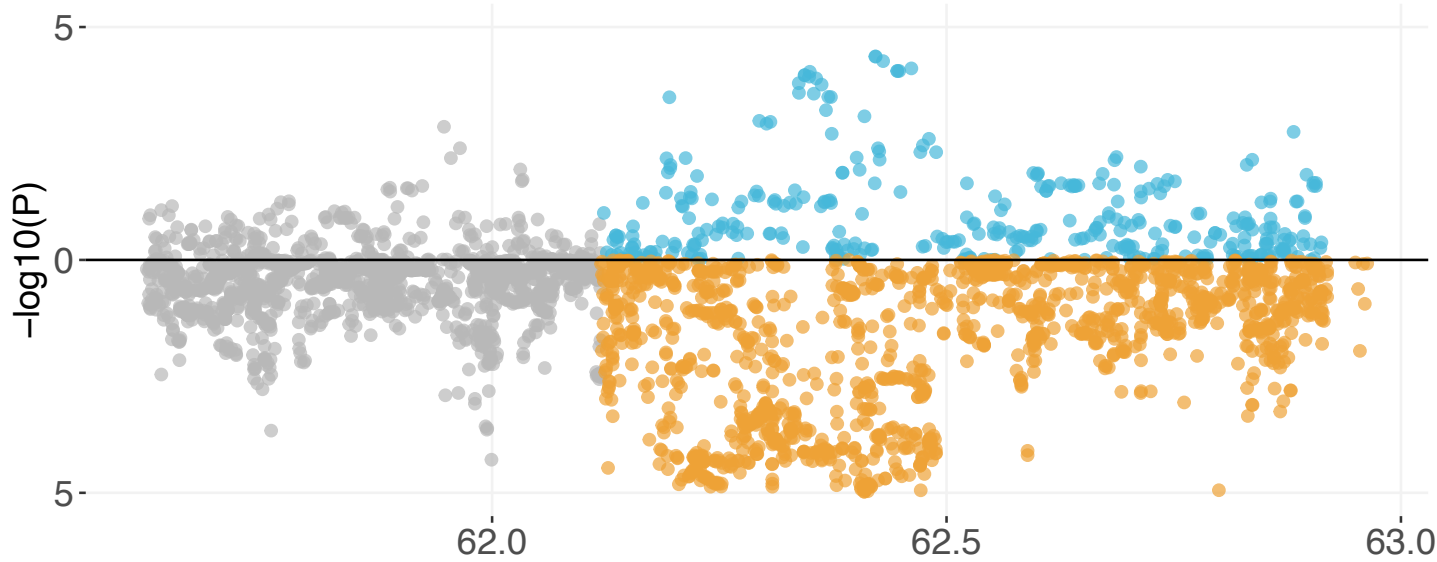
IPF vs HC at chromosome 19:10030690-11279257



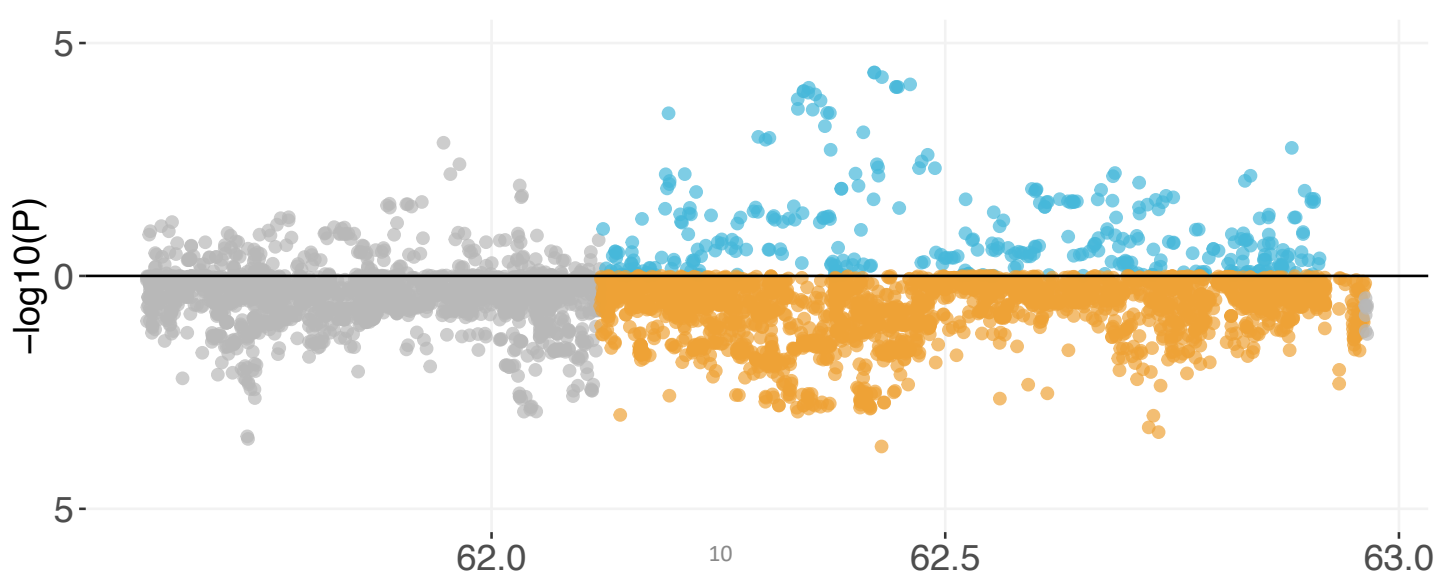
IPF vs GERD at chromosome 20:11014704-11534388



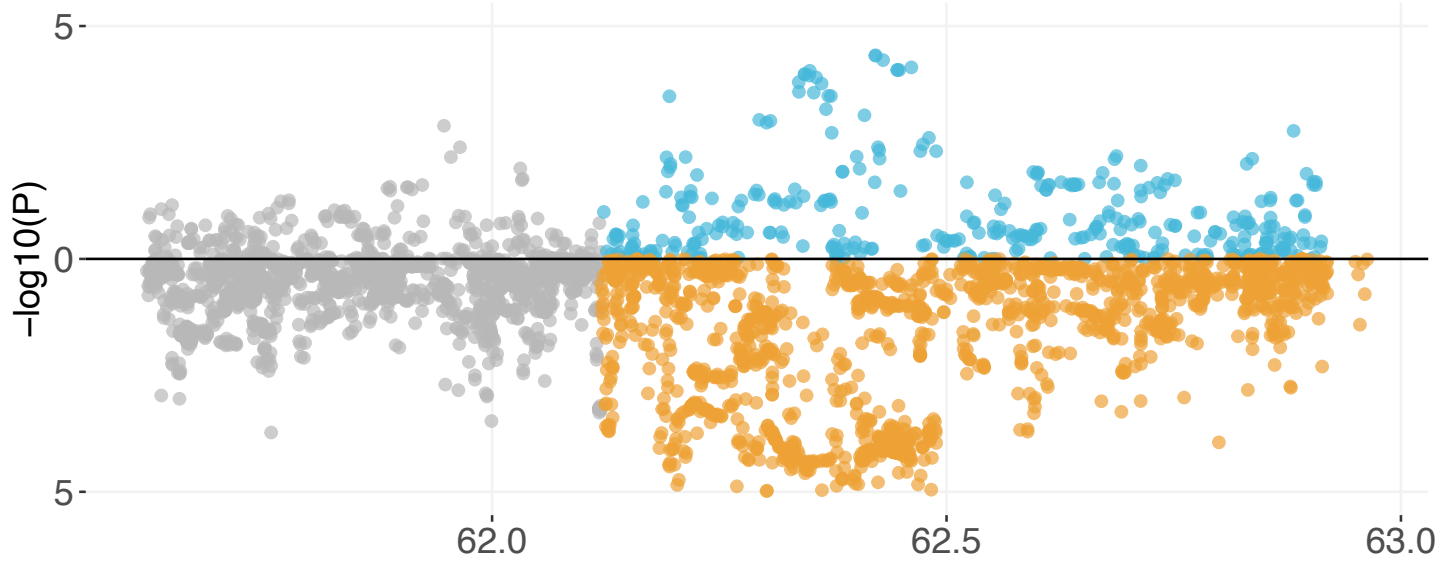
IPF vs BFP at chromosome 20:62119875-62962870



IPF vs IS at chromosome 20:62119875-62962870



IPF vs WBF at chromosome 20:62119875-62962870



S Table 1: Phenotype-level correlations between UK Biobank traits and IPF (FDR < 0.05)

Phenotype	R square	P value	Coefficient	Adjusted P value (FDR)	Adjusted P value (Bonferroni)
Doctor diagnosed fibrosing alveolitis/unspecified alveolitis	0.046	4.66E-36	5.57	3.12E-33	3.12E-33
Systemic Lupus Erythematosus	0.011	3.40E-18	4.46	1.14E-15	2.27E-15
Doctor diagnosed emphysema	0.025	8.23E-18	3.44	1.79E-15	5.51E-15
Doctor diagnosed bronchiectasis	0.029	1.07E-17	2.78	1.79E-15	7.16E-15
Doctor diagnosed COPD	0.029	1.75E-16	2.49	2.34E-14	1.17E-13
Number of treatments/medications taken	0.025	4.72E-14	0.18	5.26E-12	3.16E-11
Doctor diagnosed tuberculosis	0.015	2.43E-10	2.70	2.32E-08	1.63E-07
Age at recruitment	0.033	3.29E-10	0.12	2.75E-08	2.20E-07
Year of birth	0.032	4.34E-10	-0.11	3.23E-08	2.90E-07
Doctor diagnosed sarcoidosis	0.013	7.38E-09	2.68	4.94E-07	4.94E-06
Nap during day	0.017	6.41E-08	0.85	3.65E-06	4.29E-05
Lymphocyte percentage	0.020	6.56E-08	0.00	3.65E-06	4.39E-05
Number of self-reported non-cancer illnesses	0.013	7.10E-08	0.20	3.65E-06	4.75E-05
Albumin	0.012	1.27E-07	-0.17	6.07E-06	8.50E-05
Medication for cholesterol, blood pressure or diabetes	0.032	2.19E-07	0.44	9.77E-06	0.00014651
Long-standing illness, disability or infirmity	0.017	4.57E-07	1.07	1.91E-05	0.00030573
Taking other prescription medications	0.018	7.43E-07	1.22	2.92E-05	0.00049707
C_reactive_protein	0.006	8.55E-07	0.04	3.18E-05	0.000572
Doctor diagnosed cystic fibrosis	0.008	2.12E-06	6.73	7.46E-05	0.00141828
Red blood cell (erythrocyte) distribution width	0.010	3.66E-06	0.00	0.00012	0.00244854
Other serious medical condition/disability diagnosed by doctor	0.013	4.20E-06	0.99	0.00013	0.0028098
Neutrophill count	0.011	7.36E-06	0.00	0.00022	0.00492384
Cystatin_C	0.004	1.49E-05	0.74	0.00043	0.0099681
Chest pain or discomfort	0.010	1.81E-05	0.97	0.00050	0.0121089
Overall health rating	0.010	4.88E-05	0.55	0.0013	0.0326472
Total Cholesterol	0.006	1.00E-04	-0.31	0.0026	0.0669
White blood cell (leukocyte) count	0.008	0.00016	0.00	0.0038	0.10382679
Monocyte count	0.005	0.00017	0.01	0.0041	0.11571626
COPD	0.005	0.00020	0.75	0.0047	0.13556081
Waist circumference	0.008	0.00029	0.03	0.0064	0.19288675
LC	0.003	0.00037	1.81	0.0079	0.24563071
Eosinophill count	0.006	0.00045	0.02	0.0094	0.30113965
Forced vital capacity (FVC)	0.009	0.00057	-0.44	0.011	0.37820912
LDL	0.005	0.00064	-0.36	0.013	0.42796131
Forced vital capacity (FVC), Best measure	0.011	0.00077	0.00	0.015	0.51550531
Forced expiratory volume in 1-second (FEV1)	0.009	0.00091	-0.53	0.017	0.60714292
Diabetes diagnosed by doctor	0.005	0.00092	1.06	0.017	0.61433467
Surgery on leg arteries (other than for varicose veins)	0.034	0.0010	-2.91	0.018	0.69112182
Average monthly intake of other alcoholic drinks	0.033	0.0013	0.38	0.021	0.84787655
Doctor diagnosed alpha-1 antitrypsin deficiency	0.003	0.0013	3.29	0.021	0.854503
Creatinine	0.002	0.0014	0.00	0.023	0.92877337
Forced expiratory volume in 1-second (FEV1), Best measure	0.009	0.0017	-0.01	0.027	1
Eye problems/disorders	0.013	0.0017	0.16	0.027	1
IGF_1	0.004	0.0024	-0.05	0.036	1
Neutrophill percentage	0.007	0.0026	0.00	0.039	1
Other eye problems	0.005	0.0034	0.72	0.049	1

S Table 2: Correlations between UK Biobank traits and IPF polygenic risk score (FDR < 0.05)

Phenotype	R square	P value	Coefficient	Adjusted P value (FDR)	Adjusted P value (Bonferroni)
Monocyte percentage	-5.59E-06	7.46E-09	1.69E-10	4.99E-06	4.99E-06
Monocyte count	-3.11E-06	1.63E-05	1.51E-09	0.00545235	0.0109047
Mean corpuscular haemoglobin concentration	-2.57E-06	8.75E-05	-2.72E-10	0.0195125	0.0585375

S Table 3: Global genetic correlations between UK Biobank traits and IPF (FDR < 0.05)

Trait	h ²	Rho corrected	Corr corrected	Pvalue corrected	p_fdr
Fibroblastic disorders	0.017	0.027	0.42	1.50E-06	0.001
Ischaemic Stroke	0.062	0.051	0.41	1.09E-05	0.002
Palmar fascial fibromatosis [Dupuytren]	0.017	0.024	0.36	1.80E-05	0.002
Other/unspecified dorsalgia	0.004	-0.016	-0.51	4.72E-05	0.004
Body Mass Index	0.164	0.024	0.17	6.14E-05	0.004
Arm fat percentage	0.194	0.030	0.13	6.20E-05	0.004
Diagnoses - main ICD10: S42 Fracture of shoulder and upper arm	0.002	0.014	0.66	7.70E-05	0.004
Insomnia	0.042	-0.026	-0.25	0.00021	0.010
Type 2 diabetes with ophthalmic complications	0.001	0.013	0.69	0.00025	0.010
Body fat percentage	0.200	0.036	0.16	0.00026	0.010
Whole body fat mass	0.207	0.033	0.14	0.00041	0.014
Total protein (quantile)	0.190	0.006	0.03	0.00044	0.014
Hip circumference	0.193	0.036	0.16	0.00065	0.019
Diagnoses - main ICD10: E04 Other non-toxic goitre	0.005	-0.013	-0.34	0.00075	0.019
Diseases of the nervous system	0.014	0.013	0.21	0.00078	0.019
Malignant neoplasm of respiratory system and intrathoracic organs	0.003	0.019	0.72	0.00085	0.019
Diagnoses - main ICD10: C34 Malignant neoplasm of bronchus and lung	0.003	0.014	0.53	0.00086	0.019
Malignant melanoma of skin	0.004	0.016	0.50	0.00089	0.019
Diagnoses - main ICD10: K52 Other non-infective gastro-enteritis and colitis	0.006	0.012	0.32	0.00113	0.023
Creatinine (quantile)	0.187	-0.005	-0.02	0.00165	0.030
SHBG (quantile)	0.185	-0.005	-0.02	0.00169	0.030
Diagnoses - main ICD10: C61 Malignant neoplasm of prostate	0.010	-0.014	-0.27	0.00175	0.030
Non-cancer illness code, self-reported: prolapsed disc/slipped disc	0.007	0.013	0.30	0.00182	0.030
Non-cancer illness code, self-reported: rheumatoid arthritis	0.012	-0.014	-0.26	0.00257	0.039
Hernia	0.017	-0.019	-0.29	0.00264	0.039
Asthma-related pneumonia	0.003	0.012	0.40	0.00344	0.049

S Table 4: Significant local regions from SUPERGNOVA (FDR < 0.05)

GRCh37 Chr	GRCh37 Start	GRCh37 End	Rho	Correlation	IPF h ²	Trait h ²	Variance	P value	Number of SNP	Trait	Adjusted p value
2	100197638	101338509	0.0009181	1.076084853	0.0022	0.00033	5.37E-08	7.41E-05	450	BFP	0.040
4	48227642	53412129	-0.0004397	-1.148381067	0.0007	0.00020	1.29E-08	1.07E-04	398	HC	0.048
4	48227642	53412129	-0.0004624	-1.171372833	0.0007	0.00022	1.37E-08	7.64E-05	398	WBF	0.040
4	145024452	148047972	0.00152152	1.319656624	0.0027	0.00049	1.36E-07	3.64E-05	800	BD	0.027
4	145024452	148047972	0.00153375	0.893286257	0.0030	0.00099	1.11E-07	4.35E-06	822	HC	0.007
7	71874997	73996533	-0.000992	-1.390732517	0.0034	0.00015	5.61E-08	2.83E-05	388	LC-Adeno	0.026
7	71874997	73996533	-0.0012313	-1.020456228	0.0032	0.00045	8.41E-08	2.19E-05	358	LC-Overall	0.025
7	124155319	125386718	0.00031845	1.622580856	0.0027	0.00001	5.96E-09	3.71E-05	376	GERD	0.027
7	124155319	125386718	-0.0010126	-0.9591298	0.0028	0.00040	3.55E-08	7.66E-08	376	LC-Adeno	0.000
7	124155319	125386718	-0.0011691	-1.0546343	0.0028	0.00044	7.35E-08	1.62E-05	376	LC-Ever	0.018
7	124155319	125386718	-0.0003354	-1.264624298	0.0027	0.00003	5.57E-09	7.04E-06	376	PC	0.010
7	124155319	125386718	-0.000337	-1.2474198	0.0027	0.00003	4.69E-09	8.73E-07	376	SKIN	0.003
8	108646968	110761074	0.00140409	1.095712503	0.0021	0.00077	6.49E-08	3.55E-08	722	FIBRO	0.000
8	108646968	110761074	0.00138822	1.09978966	0.0021	0.00074	6.24E-08	2.77E-08	722	PFF	0.000
10	118417453	119697663	0.00076178	3.466637912	0.0001	0.00040	3.44E-08	4.04E-05	596	BFP	0.028
10	118417453	119697663	0.00063527	4.373532223	0.0001	0.00029	2.12E-08	1.25E-05	521	BMI	0.016
10	118417453	119697663	0.0008632	3.646813319	0.0001	0.00046	3.41E-08	2.93E-06	596	WBF	0.006
12	97439589	99220284	-0.0007808	-1.618998426	0.0006	0.00036	3.71E-08	5.02E-05	801	BMI	0.032
12	97439589	99220284	-0.0009282	-2.074365504	0.0004	0.00046	4.93E-08	2.90E-05	873	HC	0.026
13	40181792	41773356	0.00071865	0.754733444	0.0037	0.00025	3.24E-08	6.52E-05	629	HC	0.039
14	93379151	94420996	0.00054221	1.748899691	0.0002	0.00050	1.93E-08	9.68E-05	397	BMI	0.045
18	45314528	46208355	0.00043225	1.446763395	0.0014	0.00006	1.20E-08	8.24E-05	410	PC	0.042
19	10030690	11279257	-0.0018445	-1.247563343	0.0015	0.00141	1.53E-07	2.40E-06	361	BD	0.006
19	10030690	11279257	0.00105941	1.132095119	0.0016	0.00053	5.17E-08	3.17E-06	423	HC	0.006
20	11014704	11534388	-0.0003089	-1.68816263	0.0019	0.00002	6.20E-09	8.78E-05	288	GERD	0.043
20	62119875	62962870	0.00137656	0.893169382	0.0054	0.00044	1.09E-07	2.94E-05	322	BFP	0.026
20	62119875	62962870	0.00225362	1.068203883	0.0054	0.00083	2.94E-07	3.28E-05	324	IS	0.027
20	62119875	62962870	0.00114659	0.871566982	0.0054	0.00032	8.26E-08	6.64E-05	322	WBF	0.039

S Table 5: TWAS UTMOST significant genes from joint analysis of 44 tissues from GTEx

Gene	Test score	p value	GRCh37 chromosome	GRCh37 position	Adjusted p value	Identified GWAS hit	Identified DEG
AKAP13	18.22	7.94E-09	15	85923802-86292586	3.10E-03	T	T
ANO9	31.33	7.11E-15	11	417930-442011	2.78E-09		T
ARHGAP27	25.90	2.15E-12	17	43471268-43511787	8.38E-07	T	T
ARL17A	16.71	1.18E-08	17	43697710-43913194	4.62E-03		
B4GALNT4	15.85	4.58E-08	11	369795-382117	1.79E-02		T
BAHD1	26.24	2.26E-12	15	40731920-40760441	8.84E-07		
BMF	133.41	1.83E-11	15	40380091-40401093	7.14E-06		
BRSK2	125.77	4.15E-10	11	1411129-1483919	1.62E-04	T	
CDHR5	28.26	4.36E-13	11	616565-626078	1.70E-07		
CNPY4	14.97	1.01E-07	7	99717236-99723134	3.96E-02		T
CRHR1	23.95	2.71E-11	17	43697710-43913194	1.06E-05	T	
CTSD	106.87	4.09E-11	11	1773982-1785222	1.60E-05		T
DEPTOR	17.37	1.03E-08	8	120885900-121063157	4.04E-03	T	
EFCAB4A	19.81	8.39E-10	11	826144-831991	3.28E-04		T
FAM13A	21.22	2.84E-10	4	89647106-90032549	1.11E-04	T	T
GJC1	23.99	1.09E-11	17	42875816-42908184	4.24E-06		
HRAS	15.22	6.70E-08	11	532242-537287	2.62E-02		
IRF7	120.20	2.22E-11	11	612553-615999	8.67E-06		T
KRTAP5-1	77.98	2.50E-11	11	1605572-1606513	9.77E-06		T
LMNTD2	15.87	7.04E-08	11	554850-560779	2.75E-02		
LRRC37A	667.77	2.27E-11	17	44370099-44415160	8.85E-06	T	
MAFK	15.58	5.12E-08	7	1570350-1582679	2.00E-02		
MAPT	305.78	2.06E-11	17	43971748-44105700	8.04E-06	T	
MYNN	507.64	2.34E-11	3	169490619-169507504	9.13E-06		T
PAK6	161.50	3.45E-08	4	40509629-40569688	1.35E-02		
PKD2	17.99	8.56E-09	4	88928799-88998931	3.34E-03		T
PLEKHM1	340.62	2.36E-11	17	43513266-43568146	9.23E-06		T
PPM1K	16.49	5.33E-08	4	89178772-89205921	2.08E-02		T
PRR33	488.77	1.98E-11	11	1910375-1912084	7.72E-06		
SCT	83.37	1.09E-11	11	626313-627173	4.26E-06		
SEMA6B	18.90	6.27E-09	19	4542600-4559820	2.45E-03		T
SLC25A22	454.56	2.36E-11	11	790475-798316	9.21E-06		
SNCA	26.87	9.93E-13	4	90645250-90759466	3.88E-07		T
TNNT3	26.57	6.56E-12	11	1940792-1959936	2.56E-06		
WNT3	347.42	4.12E-11	17	44839872-44910520	1.61E-05		T
WNT9B	23.30	4.25E-11	17	44910567-44964096	1.66E-05		T

S Table 6: Differential gene expression analysis of candidate genes using PulmonDB data

Gene	Study	Mean	T statistic	df	P value	Adjusted P value (Bonferroni)	UTMOST effect size in lung	UTMOST P value in lung
CDHR5	GSE32537	0.086	20.69	215	4.67E-53	4.90E-51	-0.47	0.051
LMNTD2	GSE32537	-0.097	-18.04	215	6.31E-45	6.62E-43		
B4GALNT4	GSE32537	-0.071	-17.44	215	5.09E-43	5.35E-41	66.09	0.015
SLC25A22	GSE48149	-1.023	-22.63	51	2.92E-28	3.07E-26	27.24	3.94E-26
HRAS	GSE48149	-0.325	-19.20	51	5.40E-25	5.67E-23	0.30	0.002
B4GALNT4	GSE38958	-0.161	-13.22	113	1.11E-24	1.16E-22	66.09	0.015
CDHR5	GSE38958	-0.113	-12.42	113	7.34E-23	7.71E-21	-0.47	0.051
B4GALNT4	GSE48149	0.345	13.87	51	6.12E-19	6.42E-17	66.09	0.015
SCT	GSE38958	-0.146	-10.26	113	7.55E-18	7.93E-16	0.01	0.004
SLC25A22	GSE53845	0.171	9.34	93	5.06E-15	5.31E-13	27.24	3.94E-26
B4GALNT4	GSE53845	-0.157	-8.67	93	1.34E-13	1.40E-11	66.09	0.015
LMNTD2	GSE38958	-0.096	-7.97	113	1.37E-12	1.44E-10		
LMNTD2	GSE53845	-0.084	-7.86	93	6.74E-12	7.08E-10		
SLC25A22	GSE45686	0.949	9.32	37	3.05E-11	3.20E-09	27.24	3.94E-26
HRAS	GSE53845	-0.057	-7.39	93	6.29E-11	6.60E-09	0.30	0.002
SLC25A22	GSE38958	-0.076	-7.05	113	1.53E-10	1.60E-08	27.24	3.94E-26
SCT	GSE32537	-0.037	-6.48	215	6.04E-10	6.34E-08	0.01	0.004
SCT	GSE53845	-0.079	-6.45	93	4.89E-09	5.14E-07	0.01	0.004
SLC25A22	GSE32537	-0.044	-5.90	215	1.42E-08	1.50E-06	27.24	3.94E-26
B4GALNT4	GSE21369	0.083	5.63	27	5.57E-06	0.00058456	66.09	0.015
POT1	GSE32537	0.038	4.43	215	1.50E-05	0.00157869	-1.48	0.231
SLC25A22	GSE21369	-0.291	-5.18	27	1.88E-05	0.00197608	27.24	3.94E-26
POT1	GSE48149	0.030	4.58	51	2.99E-05	0.00314272	-1.48	0.231
HRAS	GSE52463	-0.444	-5.61	13	8.42E-05	0.00884564	0.30	0.002
SCT	GSE21369	0.096	4.47	27	0.00012689	0.01332393	0.01	0.004
SLC25A22	GSE52463	-0.455	-4.77	13	0.00036662	0.03849502	27.24	3.94E-26

S Table 7A: Partitioned heritability results of traits used in MTAG. P values are adjusted using Bonferroni correction

IMPACT index	Tissue	Cell Deriv	Trait	Enrichment	Adjusted P value
432	Blood	B cell	AFP	1.414594	3.22E-01
			BFP	1.381341	3.59E-01
			HC	1.433832	2.08E-01
			WBF	1.387299	1.67E-01
			IPF	1.9543399	0.215503
640	Uterus	Cervix	AFP	4.683332	3.98E-01
			BFP	4.454029	3.81E-01
			HC	4.940997	2.10E-01
			WBF	4.305172	2.16E-01
			IPF	4.7139771	0.5111049
641	Stemcell	Stem cell	AFP	2.584577	5.74E-02
			BFP	2.44071	5.29E-02
			HC	2.621385	7.45E-02
			WBF	2.441791	2.41E-01
			IPF	0.7777278	0.8823101
646	Liver	Liver	AFP	1.4834	3.21E-01
			BFP	1.463281	1.47E-01
			HC	1.524422	1.88E-01
			WBF	1.432233	6.59E-02
			IPF	1.2784806	0.7912263
650	Blood	Myeloid	AFP	1.646654	1.40E-01
			BFP	1.587917	1.92E-01
			HC	1.730841	6.71E-02
			WBF	1.591209	3.90E-01
			IPF	1.9676699	0.5111049
669	Fibroblast	Lung	AFP	1.687388	1.57E-01
			BFP	1.67792	3.02E-01
			HC	1.741407	2.37E-01
			WBF	1.608516	8.88E-02
			IPF	1.2534855	0.8494849

S Table 7B: *MAFK* Partitioned heritability results of IPF after MTAG. P values are adjusted using Bonferroni correction

IMPACT index	Tissue	Cell Deriv	Trait for MTAG	Enrichment	Adjusted P value
432	Blood	B cell	AFP	1.470080161	0.002878912
			BFP	1.407362643	0.013601266
			HC	1.458294923	0.016867131
			WBF	1.426105821	0.022188703
640	Uterus	Cervix	AFP	4.638252288	0.007389846
			BFP	4.171382438	0.028723909
			HC	4.514322749	0.014378828
			WBF	3.992695315	0.096248279
641	Stemcell	Stem cell	AFP	2.582370731	0.00790598
			BFP	2.367606463	0.025863991
			HC	2.505947582	0.026093808
			WBF	2.340081324	0.074596358
646	Liver	Liver	AFP	1.505094586	0.001713691
			BFP	1.434992768	0.01242485
			HC	1.516976752	0.001613822
			WBF	1.419118026	0.051209956
650	Blood	Myeloid	AFP	1.679793221	0.095859178
			BFP	1.579624259	0.52228124
			HC	1.744878055	0.094988905
			WBF	1.590247895	0.702155452
669	Fibroblast	Lung	AFP	1.737942699	4.74E-05
			BFP	1.672887944	0.000122439
			HC	1.738980327	0.000533098
			WBF	1.617758927	0.007663334

S Table 8A: *MAFK* targeted gene set from CHIP-Atlas

Index	Cell type Class	Cell type	Tissue	Tissue diagnosis/lineage
SRX150731	Blood	GM12878	blood	mesoderm
SRX186621	Blood	GM12878	blood	mesoderm
SRX150370	Uterus	HeLa	Cervix	Adenocarcinoma
SRX150385	Liver	Hep G2	Liver	Carcinoma Hepatocellular
SRX150689	Liver	Hep G2	Liver	Carcinoma Hepatocellular
SRX150372	Pluripotent stem cell	hESC H1		
SRX150483	Lung	IMR-90	Lung	Normal
SRX150391	Blood	K-562	Blood	Leukemia Chronic Myelogenous
SRX150493	Blood	K-562	Blood	Leukemia Chronic Myelogenous
ERX159255	Digestive tract	LoVo	Colon	Adenocarcinoma
ERX159256	Digestive tract	LoVo	Colon	Adenocarcinoma
SRX360026	Digestive tract	LoVo	Colon	Adenocarcinoma
SRX298273	Blood	OCI-LY-7	Blood	Lymphoma B-cell

S Table 8B: *SMAD2* targeted gene set from CHIP-Atlas

Index	Cell type Class	Cell type	Tissue	Tissue diagnosis/lineage
SRX3847778	Cardiovascular	Aortic_smooth_muscle_cells		
SRX3847781	Cardiovascular	Aortic_smooth_muscle_cells		
SRX6476497	Cardiovascular	Aortic_smooth_muscle_cells		
SRX6476500	Cardiovascular	Aortic_smooth_muscle_cells		
SRX702089	Pluripotent stem cell	hESC_derived_ectodermal_cells		
SRX064489	Pluripotent stem cell	hESC_derived_mesendodermal_cells		
SRX064490	Pluripotent stem cell	hESC_derived_mesendodermal_cells		
SRX084502	Pluripotent stem cell	hESC_derived_mesendodermal_cells		
SRX084503	Pluripotent stem cell	hESC_derived_mesendodermal_cells		
SRX702090	Pluripotent stem cell	hESC_derived_mesendodermal_cells		
SRX702091	Pluripotent stem cell	hESC_derived_mesendodermal_cells		
SRX2844311	Pluripotent stem cell	hESC_H1		
SRX2844312	Pluripotent stem cell	hESC_H1		
SRX064480	Pluripotent stem cell	hESC_H9		
SRX064481	Pluripotent stem cell	hESC_H9		
SRX084500	Pluripotent stem cell	hESC_H9		
SRX084501	Pluripotent stem cell	hESC_H9		
SRX702088	Pluripotent stem cell	hESC_HUES64		
SRX3592677	Pluripotent stem cell	hESC_HUES8		
SRX3592681	Pluripotent stem cell	hESC_HUES8		
SRX3592685	Pluripotent stem cell	hESC_HUES8		
SRX378126	Pluripotent stem cell	hESC_WA09		
SRX378127	Pluripotent stem cell	hESC_WA09		
SRX6957406	Kidney	HGrC1		
SRX6957412	Kidney	HGrC1		
SRX6957413	Kidney	HGrC1		
SRX6957414	Kidney	HGrC1		
SRX6957415	Kidney	HGrC1		
SRX6957436	Kidney	HGrC1		
SRX6957437	Kidney	HGrC1		
SRX6957486	Kidney	HGrC1		
SRX6957491	Kidney	HGrC1		
SRX6476489	Cardiovascular	HUVEC	Umbilical Cord	Normal
SRX6476492	Cardiovascular	HUVEC	Umbilical Cord	Normal
SRX6957479	Gonad	KGN	Ovary	Tumor Granulosa Cell
SRX6957483	Gonad	KGN	Ovary	Tumor Granulosa Cell
SRX2245587	Pancreas	PANC-1	Pancreas/Duct	Epithelioid Carcinoma
SRX2245588	Pancreas	PANC-1	Pancreas/Duct	Epithelioid Carcinoma

S Table 9A: Enrichment of *MAFK* targets in cell-type-specific differentially expressed genes in IPF single cell data. P values are adjusted using Bonferroni correction

Annotation	# genes	Celltype	P value	Adjusted P value (Bonferroni)
SRX150483.IMR.90	64	Myofibroblast	1.89E-50	8.45E-48
SRX150385.Hep_G2	55	Macrophage	3.53E-49	1.58E-46
SRX150483.IMR.90	54	Macrophage	2.95E-48	1.32E-45
SRX150385.Hep_G2	53	Macrophage_Alveolar	2.64E-45	1.18E-42
SRX150483.IMR.90	53	Macrophage_Alveolar	2.64E-45	1.18E-42
SRX150385.Hep_G2	66	Ciliated	2.15E-41	9.63E-39
SRX150385.Hep_G2	44	VE_Capillary_B	2.56E-40	1.15E-37
SRX150385.Hep_G2	51	Myofibroblast	5.61E-40	2.51E-37
SRX150483.IMR.90	41	VE_Capillary_B	1.60E-37	7.16E-35
SRX150689.Hep_G2	41	Macrophage	2.03E-36	9.07E-34
SRX150391.K.562	41	Macrophage	2.03E-36	9.07E-34
SRX150483.IMR.90	57	Ciliated	1.15E-35	5.13E-33
SRX150370.HeLa	40	Macrophage	1.61E-35	7.20E-33
SRX150483.IMR.90	38	Fibroblast	4.51E-35	2.02E-32
SRX150385.Hep_G2	46	ATII	5.75E-35	2.58E-32
SRX150483.IMR.90	44	ATII	1.97E-33	8.81E-31
SRX150689.Hep_G2	38	Macrophage_Alveolar	2.60E-32	1.17E-29
SRX150391.K.562	38	Macrophage_Alveolar	2.60E-32	1.17E-29
SRX150385.Hep_G2	35	Fibroblast	2.81E-32	1.26E-29
SRX150689.Hep_G2	41	Myofibroblast	4.67E-32	2.09E-29
SRX150370.HeLa	50	Ciliated	2.96E-31	1.33E-28
SRX150370.HeLa	36	Macrophage_Alveolar	1.33E-30	5.97E-28
SRX150689.Hep_G2	32	VE_Capillary_B	3.18E-29	1.43E-26
SRX150385.Hep_G2	31	ATI	4.01E-29	1.80E-26
SRX150483.IMR.90	31	ATI	4.01E-29	1.80E-26
SRX150689.Hep_G2	44	Ciliated	1.68E-27	7.54E-25
SRX150483.IMR.90	19	ncMonocyte	1.14E-26	5.10E-24
SRX150385.Hep_G2	24	Club	1.38E-26	6.19E-24
SRX150385.Hep_G2	20	cMonocyte	2.97E-26	1.33E-23
SRX150370.HeLa	28	VE_Capillary_B	1.41E-25	6.32E-23
SRX150483.IMR.90	19	cMonocyte	6.13E-25	2.75E-22
SRX150391.K.562	27	VE_Capillary_B	1.14E-24	5.11E-22
SRX150689.Hep_G2	31	ATII	1.44E-23	6.47E-21
SRX150370.HeLa	30	Myofibroblast	1.78E-23	7.99E-21
SRX150391.K.562	30	Myofibroblast	1.78E-23	7.99E-21
SRX150689.Hep_G2	25	Fibroblast	4.53E-23	2.03E-20
SRX150370.HeLa	30	ATII	8.15E-23	3.65E-20
SRX150689.Hep_G2	24	ATI	1.41E-22	6.33E-20
SRX150391.K.562	36	Ciliated	1.56E-22	6.97E-20
SRX150391.K.562	29	ATII	4.59E-22	2.06E-19
SRX150370.HeLa	23	Fibroblast	3.01E-21	1.35E-18

Annotation	# genes	Celltype	P value	Adjusted P value (Bonferroni)
SRX150385.Hep_G2	18	cDC2	3.94E-21	1.76E-18
SRX150385.Hep_G2	15	neMonocyte	4.64E-21	2.08E-18
SRX150483.IMR.90	18	Club	5.45E-20	2.44E-17
SRX150391.K.562	21	ATI	8.53E-20	3.82E-17
SRX150370.HeLa	15	cMonocyte	1.01E-19	4.52E-17
SRX150391.K.562	15	cMonocyte	1.01E-19	4.52E-17
SRX150370.HeLa	14	neMonocyte	1.14E-19	5.10E-17
SRX150391.K.562	14	neMonocyte	1.14E-19	5.10E-17
SRX150385.Hep_G2	14	Lymphatic	1.82E-19	8.14E-17
SRX150483.IMR.90	14	Lymphatic	1.82E-19	8.14E-17
SRX150370.HeLa	20	ATI	7.16E-19	3.21E-16
SRX150483.IMR.90	16	cDC2	8.07E-19	3.62E-16
SRX150391.K.562	20	Fibroblast	1.59E-18	7.11E-16
SRX150385.Hep_G2	13	NK	1.76E-18	7.91E-16
SRX150689.Hep_G2	14	cMonocyte	1.98E-18	8.88E-16
SRX150385.Hep_G2	11	VE_Venous	4.56E-18	2.04E-15
SRX298273.OCL.LY.7	21	Macrophage_Alveolar	5.92E-18	2.65E-15
SRX150372.hESC_H1	19	ATI	5.98E-18	2.68E-15
SRX150372.hESC_H1	20	Macrophage	7.66E-18	3.43E-15
SRX150385.Hep_G2	12	T_Cytotoxic	1.59E-17	7.12E-15
SRX150372.hESC_H1	22	Myofibroblast	2.57E-17	1.15E-14
SRX150689.Hep_G2	12	Lymphatic	9.82E-17	4.40E-14
SRX150370.HeLa	14	cDC2	1.61E-16	7.22E-14
SRX150483.IMR.90	10	VE_Venous	1.89E-16	8.47E-14
SRX150385.Hep_G2	11	T	4.27E-16	1.91E-13
SRX150689.Hep_G2	11	NK	1.08E-15	4.82E-13
SRX150689.Hep_G2	14	Club	1.21E-15	5.43E-13
SRX150689.Hep_G2	11	neMonocyte	1.56E-15	7.01E-13
SRX150372.hESC_H1	18	Macrophage_Alveolar	1.85E-15	8.28E-13
SRX150689.Hep_G2	13	cDC2	2.26E-15	1.01E-12
SRX150391.K.562	13	cDC2	2.26E-15	1.01E-12
SRX150372.hESC_H1	20	ATII	2.36E-15	1.06E-12
SRX298273.OCL.LY.7	17	Macrophage	3.06E-15	1.37E-12
SRX150372.hESC_H1	24	Ciliated	3.61E-15	1.62E-12
SRX150483.IMR.90	10	T	1.13E-14	5.08E-12
SRX150391.K.562	10	T	1.13E-14	5.08E-12
SRX150689.Hep_G2	10	T_Cytotoxic	1.13E-14	5.08E-12
SRX150372.hESC_H1	15	VE_Capillary_B	6.77E-14	3.03E-11
SRX150385.Hep_G2	7	VE_Capillary_A	1.05E-13	4.69E-11
SRX150391.K.562	12	Club	1.75E-13	7.83E-11
SRX150689.Hep_G2	9	T	2.97E-13	1.33E-10
SRX150391.K.562	9	T_Cytotoxic	2.97E-13	1.33E-10
SRX150689.Hep_G2	8	VE_Venous	3.06E-13	1.37E-10

Annotation	# genes	Celltype	P value	Adjusted P value (Bonferroni)
SRX150483.IMR.90	9	NK	6.27E-13	2.81E-10
SRX150483.IMR.90	5	DC_Mature	2.98E-12	1.34E-09
SRX150385.Hep_G2	7	B	7.05E-12	3.16E-09
SRX150370.HeLa	8	T	7.69E-12	3.44E-09
SRX150370.HeLa	8	T_Cytotoxic	7.69E-12	3.44E-09
SRX150391.K.562	7	VE_Venous	1.20E-11	5.36E-09
SRX150370.HeLa	8	NK	1.49E-11	6.66E-09
SRX150391.K.562	8	NK	1.49E-11	6.66E-09
SRX298273.OCI.LY.7	8	neMonocyte	1.94E-11	8.70E-09
SRX150370.HeLa	10	Club	2.47E-11	1.10E-08
SRX298273.OCI.LY.7	12	VE_Capillary_B	3.09E-11	1.39E-08
SRX298273.OCI.LY.7	14	Myofibroblast	3.16E-11	1.42E-08
SRX186621.GM12878	12	Macrophage	6.24E-11	2.80E-08
SRX150483.IMR.90	7	T_Cytotoxic	1.96E-10	8.80E-08
SRX360026.LoVo	11	VE_Capillary_B	2.37E-10	1.06E-07
SRX298273.OCI.LY.7	16	Ciliated	2.59E-10	1.16E-07
SRX150372.hESC_H1	7	neMonocyte	4.40E-10	1.97E-07
SRX150370.HeLa	6	VE_Venous	4.59E-10	2.06E-07
SRX150689.Hep_G2	5	VE_Capillary_A	6.40E-10	2.87E-07
SRX150483.IMR.90	5	VE_Capillary_A	6.40E-10	2.87E-07
SRX150385.Hep_G2	5	VE_Arterial	1.22E-09	5.48E-07
SRX150372.hESC_H1	10	Fibroblast	1.49E-09	6.69E-07
SRX150372.hESC_H1	7	cMonocyte	1.74E-09	7.81E-07
SRX298273.OCI.LY.7	12	ATII	1.86E-09	8.33E-07
SRX150483.IMR.90	4	VE_Peribronchial	2.05E-09	9.20E-07
SRX360026.LoVo	10	Macrophage	3.23E-09	1.45E-06
SRX150372.hESC_H1	8	Club	3.40E-09	1.52E-06
SRX186621.GM12878	11	Myofibroblast	5.84E-09	2.62E-06
SRX186621.GM12878	10	Macrophage_Alveolar	7.30E-09	3.27E-06
SRX298273.OCI.LY.7	9	ATI	8.15E-09	3.65E-06
SRX150370.HeLa	5	B	1.19E-08	5.34E-06
SRX150689.Hep_G2	5	B	1.19E-08	5.34E-06
SRX150372.hESC_H1	5	B	1.19E-08	5.34E-06
SRX150483.IMR.90	5	B	1.19E-08	5.34E-06
SRX150391.K.562	5	B	1.19E-08	5.34E-06
SRX150391.K.562	6	Lymphatic	1.19E-08	5.35E-06
SRX186621.GM12878	9	VE_Capillary_B	1.37E-08	6.14E-06
SRX150385.Hep_G2	4	B_Plasma	1.60E-08	7.16E-06
SRX150689.Hep_G2	4	B_Plasma	1.60E-08	7.16E-06
SRX298273.OCI.LY.7	4	B_Plasma	1.60E-08	7.16E-06
SRX298273.OCI.LY.7	6	cMonocyte	3.19E-08	1.43E-05
SRX150391.K.562	4	VE_Capillary_A	4.73E-08	2.12E-05
SRX360026.LoVo	9	Macrophage_Alveolar	4.82E-08	2.16E-05

Annotation	# genes	Celltype	P value	Adjusted P value (Bonferroni)
SRX360026.LoVo	9	Myofibroblast	1.87E-07	8.39E-05
SRX150372.hESC_H1	6	cDC2	1.98E-07	8.87E-05
SRX298273.OCL.LY.7	6	cDC2	1.98E-07	8.87E-05
SRX150493.K.562	11	Ciliated	2.67E-07	0.00011983
SRX186621.GM12878	9	ATII	2.92E-07	0.00013062
SRX150385.Hep_G2	3	VE_Peribronchial	3.42E-07	0.00015311
SRX186621.GM12878	7	ATI	5.24E-07	0.00023463
ERX159256.LoVo	7	VE_Capillary_B	7.84E-07	0.00035115
SRX150385.Hep_G2	3	Basal	9.99E-07	0.00044755
SRX150689.Hep_G2	3	Basal	9.99E-07	0.00044755
SRX150483.IMR.90	3	Basal	9.99E-07	0.00044755
SRX150391.K.562	3	Basal	9.99E-07	0.00044755
SRX186621.GM12878	10	Ciliated	1.07E-06	0.00047787
SRX186621.GM12878	3	B_Plasma	1.52E-06	0.00068109
SRX150370.HeLa	3	B_Plasma	1.52E-06	0.00068109
SRX150372.hESC_H1	3	B_Plasma	1.52E-06	0.00068109
SRX150483.IMR.90	3	B_Plasma	1.52E-06	0.00068109
SRX150372.hESC_H1	4	T	3.05E-06	0.00136475
SRX298273.OCL.LY.7	4	T	3.05E-06	0.00136475
SRX360026.LoVo	6	ATI	4.18E-06	0.0018714
SRX150731.GM12878	9	Ciliated	4.25E-06	0.00190286
SRX186621.GM12878	4	neMonocyte	4.79E-06	0.00214577
SRX360026.LoVo	4	neMonocyte	4.79E-06	0.00214577
SRX150689.Hep_G2	3	VE_Arterial	4.92E-06	0.00220242
SRX150483.IMR.90	3	VE_Arterial	4.92E-06	0.00220242
SRX150391.K.562	3	VE_Arterial	4.92E-06	0.00220242
SRX298273.OCL.LY.7	6	Fibroblast	5.27E-06	0.00236041
SRX150370.HeLa	4	Lymphatic	5.43E-06	0.00243475
SRX298273.OCL.LY.7	4	Lymphatic	5.43E-06	0.00243475
SRX150493.K.562	6	Macrophage	8.35E-06	0.00373943
ERX159256.LoVo	6	Macrophage	8.35E-06	0.00373943
SRX298273.OCL.LY.7	3	B	1.86E-05	0.00834666
SRX150372.hESC_H1	3	VE_Venous	2.32E-05	0.01038319
SRX150385.Hep_G2	2	DC_Mature	3.30E-05	0.0147914
SRX150391.K.562	2	DC_Mature	3.30E-05	0.0147914
SRX298273.OCL.LY.7	2	DC_Mature	3.30E-05	0.0147914
ERX159256.LoVo	5	ATI	3.32E-05	0.01487428
SRX186621.GM12878	5	Fibroblast	4.03E-05	0.01804221
SRX150493.K.562	6	ATII	4.48E-05	0.02008729
SRX360026.LoVo	6	ATII	4.48E-05	0.02008729
SRX150370.HeLa	2	VE_Peribronchial	5.25E-05	0.02353177
SRX150391.K.562	2	VE_Peribronchial	5.25E-05	0.02353177
SRX298273.OCL.LY.7	2	VE_Peribronchial	5.25E-05	0.02353177

Annotation	# genes	Celltype	P value	Adjusted P value (Bonferroni)
ERX159255.LoVo	5	Macrophage	5.91E-05	0.02645445
SRX186621.GM12878	4	Club	6.08E-05	0.02725246
SRX360026.LoVo	4	Club	6.08E-05	0.02725246
SRX298273.OCL.LY.7	4	Club	6.08E-05	0.02725246
SRX150372.hESC_H1	3	T_Cytotoxic	7.42E-05	0.03323656
SRX360026.LoVo	3	T_Cytotoxic	7.42E-05	0.03323656
SRX150493.K.562	5	Macrophage_Alveolar	8.85E-05	0.03963426
ERX159256.LoVo	5	Macrophage_Alveolar	8.85E-05	0.03963426
SRX150372.hESC_H1	3	NK	9.43E-05	0.04225825
SRX360026.LoVo	3	NK	9.43E-05	0.04225825
ERX159256.LoVo	3	ncMonocyte	0.00010397	0.04657728
SRX150370.HeLa	2	Basal	0.00010505	0.04706353
SRX150372.hESC_H1	2	Basal	0.00010505	0.04706353

S Table 9B: Enrichment of *SMAD2* targets in cell-type-specific differentially expressed genes in IPF single cell data. P values are adjusted using Bonferroni correction

Annotation	# genes	Celltype	P value	Adjusted P value (Bonferroni)
SRX6476489.HUVEC	139	VE_Capillary_B	3.14E-138	3.92E-135
SRX6476489.HUVEC	127	Myofibroblast	2.22E-104	2.77E-101
SRX6476489.HUVEC	114	Macrophage_Alveolar	8.64E-102	1.08E-98
SRX6476489.HUVEC	107	Macrophage	1.38E-99	1.72E-96
SRX6476489.HUVEC	122	ATII	9.17E-97	1.14E-93
SRX6476489.HUVEC	80	Fibroblast	6.86E-76	8.56E-73
SRX6476489.HUVEC	78	ATI	2.08E-75	2.60E-72
SRX6476489.HUVEC	104	Ciliated	2.88E-66	3.60E-63
SRX6476489.HUVEC	41	Lymphatic	1.60E-58	1.99E-55
SRX6476489.HUVEC	42	cDC2	7.53E-50	9.40E-47
SRX6476489.HUVEC	37	cMonocyte	2.63E-49	3.28E-46
SRX6476489.HUVEC	33	T	5.30E-49	6.62E-46
SRX6476489.HUVEC	34	ncMonocyte	1.57E-48	1.96E-45
SRX6476489.HUVEC	38	Club	2.40E-42	3.00E-39
SRX064481.hESC_H9	39	ATI	1.04E-36	1.30E-33
SRX6476489.HUVEC	25	T_Cytotoxic	1.17E-36	1.46E-33
SRX064481.hESC_H9	37	Macrophage	7.86E-33	9.81E-30
SRX6476489.HUVEC	16	VE_Capillary_A	1.02E-31	1.27E-28
SRX6476489.HUVEC	19	VE_Venous	2.39E-31	2.99E-28
SRX064481.hESC_H9	39	Myofibroblast	1.74E-30	2.17E-27
SRX6476489.HUVEC	21	NK	7.75E-30	9.67E-27
SRX3592685.hESC_HUES8	33	Macrophage	2.89E-29	3.60E-26
SRX064481.hESC_H9	38	ATII	7.40E-29	9.24E-26
SRX064481.hESC_H9	46	Ciliated	9.49E-29	1.18E-25
SRX064481.hESC_H9	31	VE_Capillary_B	2.61E-28	3.26E-25
SRX3592685.hESC_HUES8	37	ATII	4.25E-28	5.30E-25
SRX064481.hESC_H9	33	Macrophage_Alveolar	4.76E-28	5.95E-25
SRX3592685.hESC_HUES8	33	Macrophage_Alveolar	4.76E-28	5.95E-25
SRX064481.hESC_H9	28	Fibroblast	8.14E-26	1.02E-22
SRX064481.hESC_H9	23	Club	1.76E-25	2.20E-22
SRX3592685.hESC_HUES8	27	ATI	2.26E-25	2.82E-22
SRX6476492.HUVEC	29	Macrophage_Alveolar	1.16E-24	1.44E-21
SRX6476489.HUVEC	13	VE_Arterial	1.17E-24	1.46E-21
SRX3592685.hESC_HUES8	31	Myofibroblast	3.00E-24	3.74E-21
SRX6476492.HUVEC	26	Macrophage	4.39E-23	5.47E-20
SRX3592685.hESC_HUES8	24	VE_Capillary_B	5.90E-22	7.37E-19
SRX2844312.hESC_H1	22	ATI	1.01E-20	1.26E-17
SRX3592685.hESC_HUES8	33	Ciliated	1.10E-20	1.38E-17
SRX2844312.hESC_H1	24	ATII	2.51E-18	3.13E-15
SRX3592681.hESC_HUES8	24	ATII	2.51E-18	3.13E-15
SRX6957437.HGrC1	19	Fibroblast	1.27E-17	1.59E-14
SRX6476492.HUVEC	19	VE_Capillary_B	1.83E-17	2.29E-14
SRX2844312.hESC_H1	22	Myofibroblast	2.57E-17	3.20E-14
SRX6476492.HUVEC	22	Myofibroblast	2.57E-17	3.20E-14

Annotation	# genes	Celltype	P value	Adjusted P value (Bonferroni)
SRX064481.hESC_H9	13	cMonocyte	3.86E-17	4.82E-14
SRX2844312.hESC_H1	18	VE_Capillary_B	1.44E-16	1.79E-13
SRX6957437.HGrC1	21	Myofibroblast	1.49E-16	1.86E-13
SRX064481.hESC_H9	14	cDC2	1.61E-16	2.01E-13
SRX6476492.HUVEC	21	ATII	4.27E-16	5.33E-13
SRX064481.hESC_H9	11	Lymphatic	2.24E-15	2.80E-12
SRX3592685.hESC_HUES8	11	Lymphatic	2.24E-15	2.80E-12
SRX6476489.HUVEC	9	B	3.84E-15	4.79E-12
SRX6957437.HGrC1	16	VE_Capillary_B	8.73E-15	1.09E-11
SRX3592685.hESC_HUES8	10	T	1.13E-14	1.42E-11
SRX3592677.hESC_HUES8	19	ATII	1.30E-14	1.62E-11
SRX6476489.HUVEC	7	B_Plasma	1.38E-14	1.72E-11
SRX3592685.hESC_HUES8	13	Club	1.46E-14	1.82E-11
SRX6476492.HUVEC	23	Ciliated	1.47E-14	1.83E-11
SRX6957437.HGrC1	15	ATI	2.81E-14	3.51E-11
SRX064481.hESC_H9	10	ncMonocyte	3.66E-14	4.57E-11
SRX3592685.hESC_HUES8	15	Fibroblast	5.08E-14	6.34E-11
SRX6476492.HUVEC	15	Fibroblast	5.08E-14	6.34E-11
SRX2844312.hESC_H1	15	Macrophage	1.64E-13	2.04E-10
SRX3592681.hESC_HUES8	17	Myofibroblast	1.67E-13	2.09E-10
SRX3592685.hESC_HUES8	10	cMonocyte	2.70E-13	3.37E-10
SRX6476492.HUVEC	10	cMonocyte	2.70E-13	3.37E-10
SRX2844312.hESC_H1	9	T	2.97E-13	3.71E-10
SRX064481.hESC_H9	9	T	2.97E-13	3.71E-10
SRX064481.hESC_H9	9	T_Cytotoxic	2.97E-13	3.71E-10
SRX6957437.HGrC1	17	ATII	3.90E-13	4.86E-10
SRX2844312.hESC_H1	14	Fibroblast	4.00E-13	5.00E-10
SRX3592685.hESC_HUES8	9	ncMonocyte	8.48E-13	1.06E-09
SRX3592681.hESC_HUES8	14	Macrophage	1.19E-12	1.49E-09
SRX3592677.hESC_HUES8	13	ATI	1.89E-12	2.36E-09
SRX3592681.hESC_HUES8	13	Fibroblast	3.15E-12	3.93E-09
SRX064480.hESC_H9	13	VE_Capillary_B	4.03E-12	5.03E-09
SRX3592685.hESC_HUES8	10	cDC2	5.94E-12	7.42E-09
SRX6476489.HUVEC	5	VE_Peribronchial	1.13E-11	1.41E-08
SRX3592681.hESC_HUES8	12	VE_Capillary_B	3.09E-11	3.86E-08
SRX3592677.hESC_HUES8	14	Myofibroblast	3.16E-11	3.94E-08
SRX3592677.hESC_HUES8	12	Macrophage	6.24E-11	7.79E-08
SRX6957437.HGrC1	17	Ciliated	6.44E-11	8.04E-08
SRX064480.hESC_H9	11	ATI	1.25E-10	1.56E-07
SRX3592677.hESC_HUES8	11	Fibroblast	1.92E-10	2.40E-07
SRX064480.hESC_H9	7	T	1.96E-10	2.45E-07
SRX3592681.hESC_HUES8	7	T	1.96E-10	2.45E-07
SRX3592685.hESC_HUES8	7	T_Cytotoxic	1.96E-10	2.45E-07
SRX2844312.hESC_H1	16	Ciliated	2.59E-10	3.24E-07
SRX064481.hESC_H9	7	NK	3.49E-10	4.35E-07
SRX3592685.hESC_HUES8	7	NK	3.49E-10	4.35E-07
SRX3592681.hESC_HUES8	7	ncMonocyte	4.40E-10	5.49E-07

Annotation	# genes	Celltype	P value	Adjusted P value (Bonferroni)
SRX6476492.HUVEC	7	neMonocyte	4.40E-10	5.49E-07
SRX064480.hESC_H9	11	Macrophage	4.50E-10	5.61E-07
SRX6957437.HGrC1	6	VE_Venous	4.59E-10	5.73E-07
SRX2844312.hESC_H1	7	Lymphatic	5.50E-10	6.87E-07
SRX6476489.HUVEC	4	DC_Mature	7.45E-10	9.29E-07
SRX3592681.hESC_HUES8	10	ATI	1.01E-09	1.26E-06
SRX6476492.HUVEC	10	ATI	1.01E-09	1.26E-06
SRX064480.hESC_H9	12	Myofibroblast	1.03E-09	1.28E-06
SRX3592681.hESC_HUES8	15	Ciliated	1.04E-09	1.30E-06
SRX2844312.hESC_H1	11	Macrophage_Alveolar	1.10E-09	1.38E-06
SRX6957437.HGrC1	5	VE_Arterial	1.22E-09	1.53E-06
SRX3592677.hESC_HUES8	10	VE_Capillary_B	1.80E-09	2.25E-06
SRX6957437.HGrC1	10	Macrophage	3.23E-09	4.03E-06
SRX2844312.hESC_H1	8	Club	3.40E-09	4.25E-06
SRX3592677.hESC_HUES8	6	T	4.96E-09	6.19E-06
SRX6957437.HGrC1	6	T	4.96E-09	6.19E-06
SRX6476492.HUVEC	6	T	4.96E-09	6.19E-06
SRX2844312.hESC_H1	6	T_Cytotoxic	4.96E-09	6.19E-06
SRX3592681.hESC_HUES8	6	T_Cytotoxic	4.96E-09	6.19E-06
SRX6476492.HUVEC	6	T_Cytotoxic	4.96E-09	6.19E-06
SRX6957437.HGrC1	10	Macrophage_Alveolar	7.30E-09	9.12E-06
SRX3592681.hESC_HUES8	6	NK	8.08E-09	1.01E-05
SRX6476492.HUVEC	6	NK	8.08E-09	1.01E-05
SRX3592681.hESC_HUES8	6	Lymphatic	1.19E-08	1.49E-05
SRX064480.hESC_H9	13	Ciliated	1.67E-08	2.09E-05
SRX2844312.hESC_H1	5	VE_Venous	1.73E-08	2.16E-05
SRX064481.hESC_H9	5	VE_Venous	1.73E-08	2.16E-05
SRX3592677.hESC_HUES8	6	cMonocyte	3.19E-08	3.98E-05
SRX3592681.hESC_HUES8	6	cMonocyte	3.19E-08	3.98E-05
SRX6476492.HUVEC	7	Club	3.97E-08	4.95E-05
SRX064481.hESC_H9	4	VE_Capillary_A	4.73E-08	5.91E-05
SRX6476489.HUVEC	3	Goblet	6.31E-08	7.87E-05
SRX3592677.hESC_HUES8	12	Ciliated	6.70E-08	8.36E-05
SRX064480.hESC_H9	8	Fibroblast	8.93E-08	0.0001142
SRX6957437.HGrC1	5	T_Cytotoxic	1.24E-07	0.00015428
SRX6476489.HUVEC	3	cDC1	1.24E-07	0.00015467
SRX2844312.hESC_H1	5	NK	1.85E-07	0.0002313
SRX3592677.hESC_HUES8	5	NK	1.85E-07	0.0002313
SRX3592681.hESC_HUES8	6	cDC2	1.98E-07	0.00024703
SRX6476492.HUVEC	6	cDC2	1.98E-07	0.00024703
SRX2844312.hESC_H1	5	neMonocyte	2.18E-07	0.00027252
SRX064480.hESC_H9	5	neMonocyte	2.18E-07	0.00027252
SRX6476492.HUVEC	5	Lymphatic	2.56E-07	0.00031942
SRX064480.hESC_H9	9	ATII	2.92E-07	0.00036388
SRX064480.hESC_H9	8	Macrophage_Alveolar	3.17E-07	0.00039512
SRX3592681.hESC_HUES8	8	Macrophage_Alveolar	3.17E-07	0.00039512

Annotation	# genes	Celltype	P value	Adjusted P value (Bonferroni)
SRX2844312.hESC_H1	5	cMonocyte	5.78E-07	0.00072187
SRX064480.hESC_H9	5	cMonocyte	5.78E-07	0.00072187
SRX3592685.hESC_HUES8	4	VE_Venous	6.38E-07	0.00079662
SRX064490.hESC_derived_mesendodermal_cells	7	VE_Capillary_B	7.84E-07	0.0009782
SRX6476489.HUVEC	3	T_Regulatory	1.16E-06	0.0014436
SRX2844311.hESC_H1	7	Macrophage	1.18E-06	0.00146799
SRX2844311.hESC_H1	7	Macrophage_Alveolar	2.08E-06	0.00259036
SRX3592677.hESC_HUES8	7	Macrophage_Alveolar	2.08E-06	0.00259036
SRX2844312.hESC_H1	5	cDC2	2.63E-06	0.0032855
SRX064480.hESC_H9	5	cDC2	2.63E-06	0.0032855
SRX6957437.HGrC1	5	cDC2	2.63E-06	0.0032855
SRX064480.hESC_H9	4	T_Cytotoxic	3.05E-06	0.00380179
SRX3592677.hESC_HUES8	4	T_Cytotoxic	3.05E-06	0.00380179
SRX6957437.HGrC1	3	VE_Capillary_A	3.38E-06	0.00421364
SRX2844311.hESC_H1	6	ATI	4.18E-06	0.00521319
SRX6957437.HGrC1	4	NK	4.20E-06	0.00524638
SRX3592677.hESC_HUES8	4	neMonocyte	4.79E-06	0.00597751
SRX6957491.HGrC1	3	VE_Arterial	4.92E-06	0.00613532
SRX3592677.hESC_HUES8	5	Club	5.30E-06	0.00661806
SRX3592681.hESC_HUES8	5	Club	5.30E-06	0.00661806
SRX6957437.HGrC1	5	Club	5.30E-06	0.00661806
SRX6957437.HGrC1	4	Lymphatic	5.43E-06	0.00678252
SRX2844311.hESC_H1	6	VE_Capillary_B	5.90E-06	0.00736051
SRX2844311.hESC_H1	7	Myofibroblast	5.95E-06	0.00742512
SRX064490.hESC_derived_mesendodermal_cells	6	Macrophage	8.35E-06	0.01041697
SRX6957437.HGrC1	2	Goblet	1.80E-05	0.02247524
SRX064481.hESC_H9	3	B	1.86E-05	0.02325141
SRX3592677.hESC_HUES8	3	VE_Venous	2.32E-05	0.02892459
SRX064490.hESC_derived_mesendodermal_cells	6	Myofibroblast	3.34E-05	0.04170616

S Table 10: Study information of GWAS summary statistics

Trait	Abbrev	Sample size	Reference
Alcoholism	DrnkWk	537349	https://www.nature.com/articles/s41588-018-0307-5
Alzheimer's Disease	AD	63926	https://www.niagads.org/igap-rv-summary-stats-kunkle-p-value-data
Anorexia Nervosa	AN	72517	https://www.nature.com/articles/s41588-019-0439-2
Anxiety Disorder	ADs	31890	https://jamanetwork.com/journals/jamapsychiatry/fullarticle/2733149
Asthma	asthma	127669	https://www.nature.com/articles/s41588-017-0014-7
Bipolar Disorder	BD	51710	https://www.nature.com/articles/s41588-019-0397-8
Body Mass Index	BMI	795640	https://academic.oup.com/hmg/article/27/20/3641/5067845
Breast Cancer	BC	228951	https://www.nature.com/articles/nature24284
Chronic Kidney Disease	CKD	118147	https://www.nature.com/articles/ncomms10023
Crohn's Disease	Crohn	40266	https://www.nature.com/articles/ng.3760
Epilepsy	epilepsy	34853	https://www.sciencedirect.com/science/article/pii/S1474442214701711?via%3Dihub
HDL Cholesterol	HDL	99900	https://www.nature.com/articles/nature09270
Height	Height	709706	https://academic.oup.com/hmg/article/27/20/3641/5067845
Inflammatory Bowel Disease	IBD	59957	https://www.nature.com/articles/ng.3760
Insomnia	Insomnia	113006	https://www.nature.com/articles/ng.3888
Ischaemic Stroke	IS	29633	https://n.neurology.org/content/86/13/1217.long
LDL Cholesterol	LDL	95454	https://www.nature.com/articles/nature09270
Lung Cancer	LC	85716	https://pubmed.ncbi.nlm.nih.gov/28604730/
Major Depressive Disorder	MDD	500199	http://dx.doi.org/10.1038/s41593-018-0326-7
Neuroticism	NSM	170911	https://www.nature.com/articles/ng.3552
Parkinson's Disease	PD	482730	https://www.biorxiv.org/content/10.1101/388165v3
Primary Biliary Cirrhosis	PBC	13239	https://www.nature.com/articles/ncomms9019
Resting Heart Rate	RHR	134251	http://dx.doi.org/10.1038/ng.3708
Rheumatoid Arthritis	RA	58284	https://www.nature.com/articles/nature12873
Schizophrenia	SCZ	105318	https://www.nature.com/articles/s41588-018-0059-2
Sleep Duration	SD	127573	https://journals.plos.org/plosgenetics/article?id=10.1371/journal.pgen.1006125
Systemic Lupus Erythematosus	SLE	14267	http://dx.doi.org/10.1038/ng.3434
Total Cholesterol	TC	100184	https://www.nature.com/articles/nature09270
Triglycerides	TG	96598	https://www.nature.com/articles/nature09270
Type-II Diabetes	T2D	159208	http://diabetes.diabetesjournals.org/cgi/pmidlookup?view=long&pmid=28566273
Ulcerative Colitis	UC	45975	https://www.nature.com/articles/ng.3760
Monocyte count	Monocyte	131305	https://www.sciencedirect.com/science/article/pii/S0092867416314635?via%3Dihub