

Vaccination strategies when vaccines are scarce: On conflicts between reducing the burden and avoiding the evolution of escape mutants

Félix Geoffroy, Arne Traulsen, and Hildegard Uecker

Department of Evolutionary Theory, Max Planck Institute for Evolutionary Biology, August-Thienemann-Strasse 2, 24306 Plön, Germany

Contact: uecker@evolbio.mpg.de

Abstract

When vaccine supply is limited but population immunisation urgent, the allocation of the available doses needs to be carefully considered. One aspect of dose allocation is the time interval between the primer and the booster injections in two-dose vaccines. By stretching this interval, more individuals can be vaccinated with the first dose more quickly. Even if the level of immunity of these 'half-vaccinated' individuals is lower than that of those who have received both shots, delaying the second injection can be beneficial in reducing case numbers, provided a single dose is sufficiently effective. On the other hand, there has been concern that intermediate levels of immunity in partially vaccinated individuals may favour the evolution of vaccine escape mutants. In that case, a large fraction of half-vaccinated individuals would pose a risk – but only if they encounter the virus. This raises the question whether there is a conflict between reducing the burden and the risk of vaccine escape evolution or not. We develop a minimal model to assess the population-level effects of the timing of the booster dose. We set up an SIR-type model, in which more and more individuals become vaccinated with a two-dose vaccine over the course of a pandemic. As expected, there is no trade-off when vaccine escape evolves at equal probabilities in unvaccinated and half-vaccinated patients. If vaccine escape evolves more easily in half-vaccinated patients, the presence or absence of a trade-off depends on the reductions in susceptibility and transmissibility elicited by the primer dose.

Introduction

Many vaccines are administered in two doses, a primer shot and – after a certain time interval – a booster shot. The booster shot increases the strength and duration of protection. However, the primer shot on its own already establishes some immunity. In a pandemic – such as in the current Covid pandemic – when population immunisation is urgent but vaccine doses are scarce, the question arises whether the second shot should be delayed at the benefit of administering the first vaccine dose to more people more quickly. Even if half-vaccinated individuals are only partially immune, the overall reduction in infections may be greater in a population in which many people have some immunity than in a population in which fewer individuals have stronger immunity. In the current Covid pandemic, such a delay strategy has been adopted by the UK (Campbell, 2020 Dec 30), while several other countries such as the US stick to the interval between injections that has been applied in the original clinical trials and is therefore recommended by the manufacturer (U.S. Food and Drug Administration). In early January 2021, the WHO recommended to stretch the dosing interval of the first approved vaccine (Pfizer–BioNTech COVID-19 vaccine) from 21–28 days to 42 days in countries 'experiencing exceptional epidemiological circumstances' (World Health Organization, 2021), which has for example been adopted by Germany, especially from April on (Vygen-Bonnet et al., 2021). Already preceding the current pandemic, mathematical models have compared the effects of a delay strategy in its extreme

NOTE: This preprint reports new research that has not been certified by peer review and should not be used to guide clinical practice.

36 form – a one-dose strategy – and a two-dose strategy for cholera and influenza epidemics/pandemics
37 (Azman et al., 2015; Matrajt et al., 2015). Sparked by the Covid crisis, a series of models have been
38 set up to assess when stretching the period between the primer and booster shots reduces the total
39 number of SARS-CoV-2 infections (Böttcher and Nagler, 2021; Kraay et al., 2021; Matrajt et al., 2021;
40 Paltiel et al., 2021; Saad-Roy et al., 2021).

41 However, there is another dimension to the problem, since the vaccination strategy does not only
42 affect the dynamics of the pandemic, but may also influence the evolutionary dynamics of the virus
43 (or another pathogen in other circumstances). This especially concerns the evolution of vaccine escape
44 mutants against which the vaccine has no or reduced efficiency (Saad-Roy et al., 2021). Vaccine
45 resistance is generally rare (Kennedy and Read, 2017). Yet, the large case numbers in the current
46 pandemic give the virus a lot of opportunity to replicate, mutate, and adapt. It has been hypothesized
47 that vaccine escape mutants evolve most easily in people who have only received one vaccine shot
48 (Branswell, 2021 Jan. 4). The reasoning behind this hypothesis is the following (similar to Grenfell
49 et al., 2004): After the primer dose, vaccinees have intermediate levels of antibodies (Krammer et al.,
50 2021; Saad-Roy et al., 2021). This level is not enough to keep the viral load following exposure to
51 the virus sufficiently low to avoid the occurrence of a large number of mutations, including vaccine
52 escape mutations. At the same time, it gives a large advantage to mutant virus particles to which
53 the antibodies bind only weakly. In contrast, in fully vaccinated individuals, the viral load is kept low
54 such that mutations are unlikely to occur. In unvaccinated patients, the virus can initially replicate
55 well and attain high numbers. However, the immune response is broader than the one elicited by the
56 vaccine such that vaccine escape mutants do not have a great advantage over other viral genotypes.
57 Hence, according to this reasoning, the evolution of vaccine escape is most likely at intermediate levels
58 of antibodies, which are typical for half-vaccinated individuals (but see the counter-arguments made by
59 Cobey et al., 2021). This raises the concern that the large number of half-vaccinated individuals in the
60 delay strategy may drive the evolution of vaccine escape.

61 Viral evolution can only occur in infected individuals. Thus, even if the above reasoning holds,
62 whether vaccine escape evolves in a host population does not only depend on the number of partially
63 immune individuals, but also on the number of infected individuals. If the delay strategy reduces
64 the disease prevalence in the population, this may offset the increased probability of vaccine escape
65 evolution within any one half-vaccinated patient and may actually decrease rather than increase the
66 risk of vaccine escape (see the discussion in Cobey et al., 2021). Hence, in the interplay of all effects, is
67 there a trade-off between reducing the cumulative number of infections in the pandemic and minimising
68 the risk of escape mutants or not?

69 What we were missing in the current public debate is a quantitative epidemic model that includes
70 the emergence of escape mutations and quantifies how the strengths of the various population-level
71 effects compare to each other. We therefore set up an SIR-type model to dissect and quantify the
72 considerations and verbal arguments outlined above. We chose a minimal model that is stripped down
73 to the most essential components needed to study both aspects of the problem of dose allocation.
74 This, of course, ignores much of the biological complexity and does not allow to make immediate
75 recommendations for vaccine strategies in the current pandemic. However, the transparency of the
76 model makes it possible to develop a better intuition for the conditions under which there is a trade-off
77 and those under which the same allocation strategy is optimal in both respects. We therefore hope
78 that it can contribute to a better-informed discussion.

79 The Model

80 We consider an SIR-type model, where individuals are either unvaccinated, vaccinated with the primer
81 dose only, or fully vaccinated with both doses. Since we are interested in the rate of *de novo* emergence
82 of vaccine escape mutants and not in their subsequent spread, we model the disease dynamics in the
83 absence of the vaccine escape variant. From the number of wild-type infections, we can estimate the
84 risk of vaccine escape evolution. The flow diagram of the model is shown in Fig. 1a.

85 Once vaccines become available, there is a limited but constant supply of vaccine doses that allows
86 to administer injections at total rate λ . We assume that vaccine doses are only given to individuals
87 who have never been infected by the virus (i.e. infected and recovered individuals do not receive any
88 (further) vaccination). Any vaccine dose can either be used as a primer or as a booster shot. If the

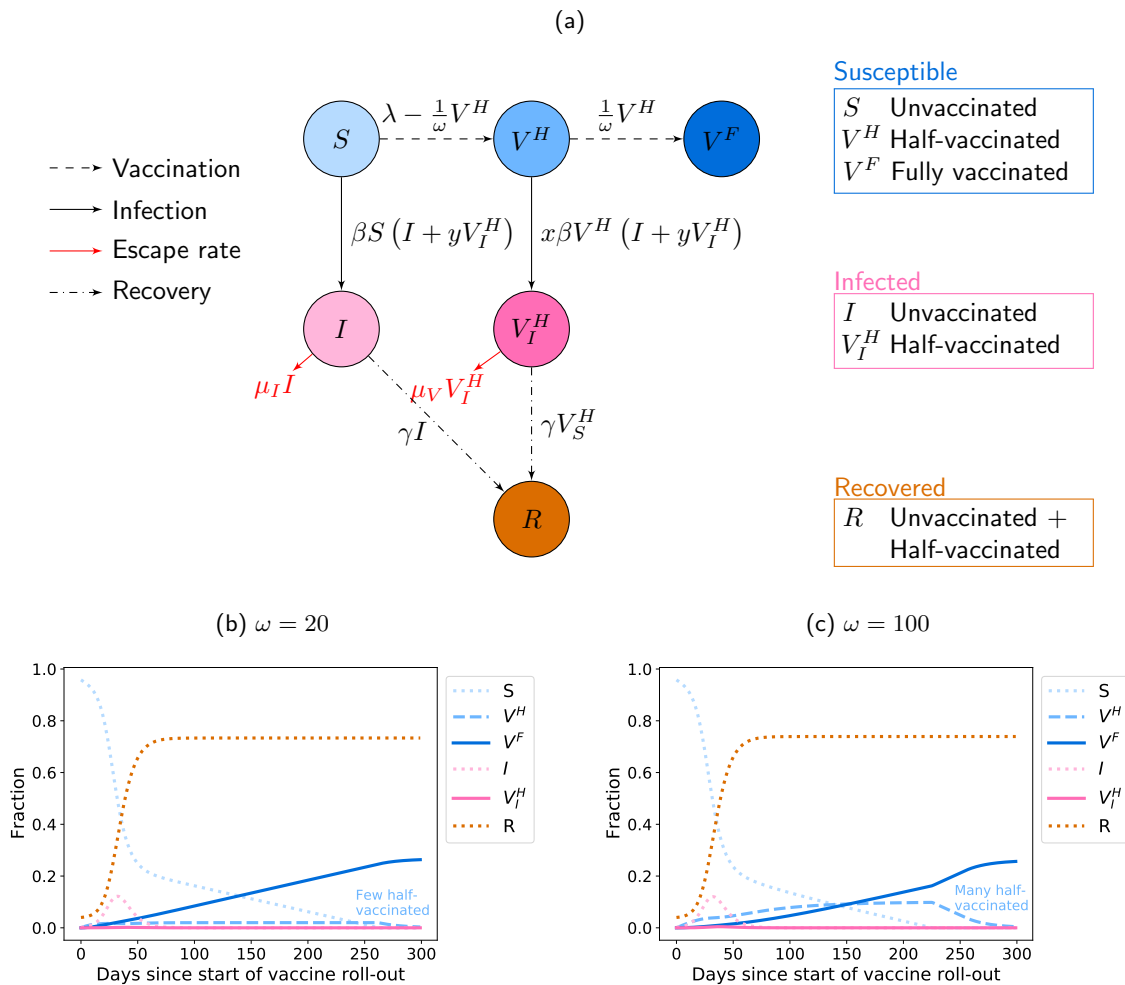


Figure 1: Model for the disease dynamics with a two-dose vaccine. (a) Flow diagram of the model defined by Eq. (1). The model corresponds to an extended SIR model, in which individuals can either be unvaccinated, vaccinated with the primer dose only, or vaccinated with the primer and booster doses. The primer dose reduces susceptibility by a factor x and transmissibility by a factor y . Vaccination with both doses provides perfect protection from the virus. Since vaccine supply is limited, there is a trade-off: either administering the booster shots after the minimally required prime-boost interval ω_{\min} or delaying the booster injection and giving the primer dose to more people more quickly ($\omega > \omega_{\min}$). The model describes the dynamics in the absence of vaccine escape mutants. The rate at which such mutants emerge can be obtained from the number of infected individuals, where vaccine escape may possibly evolve at different per-capita rates in unvaccinated and half-vaccinated patients. The allocation strategy affects the total number of individuals that become infected throughout the pandemic, but also the risk of vaccine escape evolution across the population. It is a priori not clear whether the same strategy minimises both quantities. (b-c) Exemplary dynamics of infection and vaccination with and without a delay in the booster dose. In Panel (b), the booster dose is administered as soon as possible ($\omega = \omega_{\min}$). In this case, the fraction of half-vaccinated individuals is always low. In Panel (c), the booster dose is delayed ($\omega = \omega_{\max}$), leading to a much higher fraction of half-vaccinated individuals over time. The vaccination campaign starts during the pandemic, when a considerable fraction of the population has already been affected by the virus ($I(0) = 2 \times 10^{-3}$ and $R(0) = 4 \times 10^{-2}$). For illustrative purposes, we use a large reproductive number $R_C = 2$ here.

89 time interval between the two injections is chosen as ω and the booster shots are administered at rate
 90 $\frac{1}{\omega}V^H$, the rate of primer dose injections is limited to $\lambda - \frac{1}{\omega}V^H$. The time interval ω determines the
 91 vaccination strategy: it can either be set to the interval ω_{\min} recommended by the manufacturer or
 92 be stretched to increase the rate at which unvaccinated individuals receive the first dose. We set the
 93 maximal interval as $\omega_{\max} = 5 \cdot \omega_{\min}$. For simplicity, we assume that the efficiency of the primer dose
 94 remains constant over time and that the dosing interval ω has no effect on the efficiency of the booster
 95 dose.

96 Unvaccinated and partially vaccinated individuals can become infected with the virus. Vaccina-
 97 tion with both doses, however, entirely blocks infection with the wild-type strain. The transmission
 98 coefficient between unvaccinated infected individuals and unvaccinated susceptible individuals is given
 99 by β . Vaccination with the primer dose reduces susceptibility by a factor x and transmissibility by a
 100 factor y (Gandon and Day, 2007; Matrajt et al., 2015). We do not explicitly model any vaccine effect
 101 on pathogenicity (unlike Gandon and Day (2007); Matrajt et al. (2015)), and we assume that infected
 102 individuals recover at rate γ , irrespective of their vaccination status. Upon recovery, all infected in-
 103 dividuals gain full immunity over the relevant time scales of the pandemic. We assume that vaccine
 104 escape variants against which the vaccine has reduced efficiency evolve and become dominant within
 105 unvaccinated individuals at per-capita rate μ_I and within half-vaccinated individuals at per-capita rate
 106 $\mu_V \geq \mu_I$. Once the vaccine escape variant is dominant in one individual, it can spread across the
 107 entire population. However, here we focus on the emergence of these strains and not on their future
 108 dynamics.

109 Before the escape variant arises, the dynamics of the epidemic is described by the differential
 110 equations:

$$\begin{aligned} \frac{dS}{dt} &= -\left(\lambda - \frac{1}{\omega}V^H\right) - \beta S(I + yV_I^H), \\ \frac{dV^H}{dt} &= \left(\lambda - \frac{1}{\omega}V^H\right) - \frac{1}{\omega}V^H - x\beta V^H(I + yV_I^H), \\ \frac{dV^F}{dt} &= \frac{1}{\omega}V^H, \\ \frac{dI}{dt} &= \beta S(I + yV_I^H) - \gamma I, \\ \frac{dV_I^H}{dt} &= x\beta V^H(I + yV_I^H) - \gamma V_I^H, \\ \frac{dR}{dt} &= \gamma I + \gamma V_I^H, \end{aligned} \tag{1}$$

111 where the first three equations describe individuals that are uninfected and either unvaccinated (S),
 112 half-vaccinated (V^H), or fully vaccinated (V^F). The next two equations describe individuals that are
 113 infected and either unvaccinated (I) or half-vaccinated (V_I^H). The last equation describes all individuals
 114 that are immune due to naturally acquired immunity following an infection (R).

115 Once every individual has received the primer dose (or has been infected by the virus), i.e. $S = 0$,
 116 there is no reason anymore to delay the booster dose. However, it is possible that in a delay strategy,
 117 many half-vaccinated individuals are waiting for the second shot and that the available doses are still
 118 not sufficient to vaccinate them at rate $\frac{1}{\omega_{\min}}$. Therefore, once $S = 0$, the second shot is administered
 119 at a rate given by the minimum of $\frac{1}{\omega_{\min}}V^H$ and λ . (As long as $S > 0$, there are always enough doses
 120 available to vaccinate at a steady per-capita rate $\frac{1}{\omega}$, see Appendix A.) Ultimately, every individual in
 121 the population has either been vaccinated or has acquired immunity through infection.

122 We choose the model parameters in accordance with values for the Covid pandemic. We set the
 123 infectious period to 5 days, i.e. $\frac{1}{\gamma} = 5$ days (cf. Saad-Roy et al., 2021) and the minimal interval between
 124 the vaccine doses to $\omega_{\min} = 20$ days, which is the recommended interval for the Biontech/Pfizer vaccine.
 125 For the rate of vaccine roll-out, if not stated otherwise, we choose $\lambda = 0.2\%$, which roughly corresponds
 126 to the rate in Germany during March 2021 (Ritchie et al.).

127 As a default, we assume the reproductive number in the absence of any immune individuals to be
 128 $R_C = \frac{\beta}{\gamma} = 1.2$, which is much smaller than the basic reproductive number of SARS-CoV-2 in the
 129 absence of control measures (Bar-On et al., 2020). Our choice means that there are control measures
 130 in place, but they are insufficient to control the spread of the disease. There are no estimates for
 131 the per-patient mutation rates μ_I and μ_V . The absolute values only change the number of mutant

132 infections, while the qualitative results in our model depend on the ratio μ_V/μ_I (see below for details).
133 To account for the uncertainty in this ratio, we consider $\mu_V/\mu_I = 1, 10, 100$. We set $\mu_I = 10^{-6}$. Our
134 primary focus is a scenario in which the vaccination campaign starts several months into the pandemic
135 when a noticeable fraction of the population has already been affected by the virus. We define $t = 0$
136 as the start of the vaccination campaign. As initial conditions, we then set $I(0) = 2 \times 10^{-3}$ and
137 $R(0) = 4 \times 10^{-2}$ (Roser et al., 2020), which corresponds approximately to twice the number of
138 confirmed cases in Germany in January with the assumption that only 50% of the cases are detected
139 (Backhaus et al., 2021).

140 We numerically integrate the differential equations using python, see our Jupyter notebook that is
141 available with this manuscript. Exemplary dynamics are shown in Fig. 1b and c. In Panel (b), the
142 booster dose is given as soon as possible ($\omega = \omega_{\min}$), while Panel (c) shows the dynamics under the
143 maximal delay strategy ($\omega = \omega_{\max}$).

144 We aim to determine how the strategy affects the number of cases and the risk of vaccine escape.
145 The first quantity that we consider is therefore the cumulative fraction of infected individuals from the
146 start of the vaccination campaign until the end of the pandemic, provided no vaccine escape mutants
147 evolve:

$$B = \int_0^{\infty} \gamma I(t) + \gamma V_I^H(t) dt. \quad (2)$$

148 We refer to this as the burden. The total burden can be decomposed into the burden $B^S = \int_0^{\infty} \gamma I(t) dt$
149 arising from unvaccinated individuals and the burden $B^V = \int_0^{\infty} \gamma V_I^H(t) dt$ arising from half-vaccinated
150 individuals. If the primer dose reduces the severity of disease, it is especially important to reduce B^S ,
151 since this would reduce the number of severe cases.

152 The second quantity of interest is the total fraction of patients in whom vaccine escape mutants
153 evolve after vaccine roll-out has started in the population (assuming that none are spreading yet at that
154 time):

$$M = \int_0^{\infty} \mu_I I(t) + \mu_V V_I^H(t) dt. \quad (3)$$

155 As for the burden, it can be insightful to decompose M according to the vaccination status of the
156 patients into $M^S = \int_0^{\infty} \mu_I I(t) dt$ and $M^V = \int_0^{\infty} \mu_V V_I^H(t) dt$.

157 In a non-deterministic world, these mutants may or may not evolve. The sum $\mu_I I(t) + \mu_V V_I^H(t)$
158 can also be interpreted as a stochastic rate, and the integral quantifies the total risk over the course of
159 the pandemic (not taking into account the risk prior to the vaccine roll-out, which is independent of
160 the chosen vaccination strategy). More precisely, the probability that vaccine escape mutants evolve is
161 given by

$$P_{\text{escape}} = 1 - e^{-NM}, \quad (4)$$

162 where N is the total population size. It should be noted that this is the probability of their mere
163 appearance. That does not mean that they will spread. E.g., some of those patients in whom vaccine
164 escape mutants evolve may not infect anyone, in which case the mutation is lost again from the
165 population. For shortness, we often refer to M as the risk of vaccine escape in the following, but it
166 should be kept in mind that the probability of vaccine escape is not directly given by M but by Eq. (4)
167 and that this does not involve any probability of establishment of the vaccine escape mutant in the
168 population.

169 Results

170 When can conflicts between reducing the burden and the escape risk appear?

171 What is the relationship between the burden B and the fraction of new mutant infections M ? The
172 fraction of mutants can be rewritten as $M = \mu_I \int I + \frac{\mu_V}{\mu_I} V_I^H dt$. Thus, the qualitative effect of increasing

173 or decreasing ω only depends on the ratio μ_V/μ_I , but not on their individual values. Comparing to the
174 total burden $B = \gamma \int I + V_I^H dt$, we see that there is no conflict between minimising both quantities
175 if $\mu_V = \mu_I$, since in that case both quantities are proportional to each other, $M \propto B$. However,
176 if $\mu_V > \mu_I$, the two quantities are no longer proportional to each other, and it is conceivable that
177 M increases with a change in ω , while B decreases. In contrast, we always have $M^S \propto B^S$ and
178 $M^V \propto B^V$, i.e. within the two sub-populations of susceptibles and half-vaccinated patients there is no
179 conflict and a reduction in burden always implies a reduction in escape risk.

180 **How do reductions in either susceptibility or transmissibility affect the burden and the risk of** 181 **vaccine escape?**

182 Before exploring the entire range of possible effect sizes x and y of the first vaccine dose, we consider the
183 two limiting cases, in which the first vaccine dose has either an effect on susceptibility only (Fig. 2a-f)
184 or on transmissibility only (Fig. 2g-l), but not on both simultaneously. For our default parameter set,
185 reductions in susceptibility and transmissibility reduce both the burden and the escape risk, and they can
186 both change the effect of the delay between the injections. With respect to the total burden, reductions
187 in susceptibility and transmissibility have overall very similar effects, both quantitatively and with respect
188 to their influence on the optimal strategy (compare Panels a and g, but see results for higher R_C in
189 Fig. 3, where this does not hold). In contrast, for the appearance of vaccine escape variants, it makes
190 a difference whether the primer dose reduces susceptibility or transmissibility (compare Panels d and j).
191 The discrepancy comes from slight differences in the fraction of half-vaccinated patients that do not
192 affect the total burden much but amplify in M^V (see especially the solid lines in Panels f and l).

193 In both cases, the burden mainly stems from unvaccinated individuals that become infected (compare
194 B^S with B^H) in Fig. 2. The prime-boost interval has not only a direct effect on this burden by affecting
195 the fraction of unvaccinated individuals but also an indirect effect by changing the transmission dynamics
196 (e.g. for $x = 1$, B^S increases with ω , although a longer delay reduces the fraction of unvaccinated
197 susceptible individuals S). In a similar way, if the primer dose has no effect on transmissibility ($y = 1$),
198 most mutants emerge from unvaccinated individuals. In contrast, if the primer dose has no effect
199 on susceptibility ($x = 1$), evolution within half-vaccinated individuals substantially contributes to the
200 emergence of vaccine escape even if the primer dose blocks transmission of the wild-type virus completely
201 ($y = 0$, see Panel l).

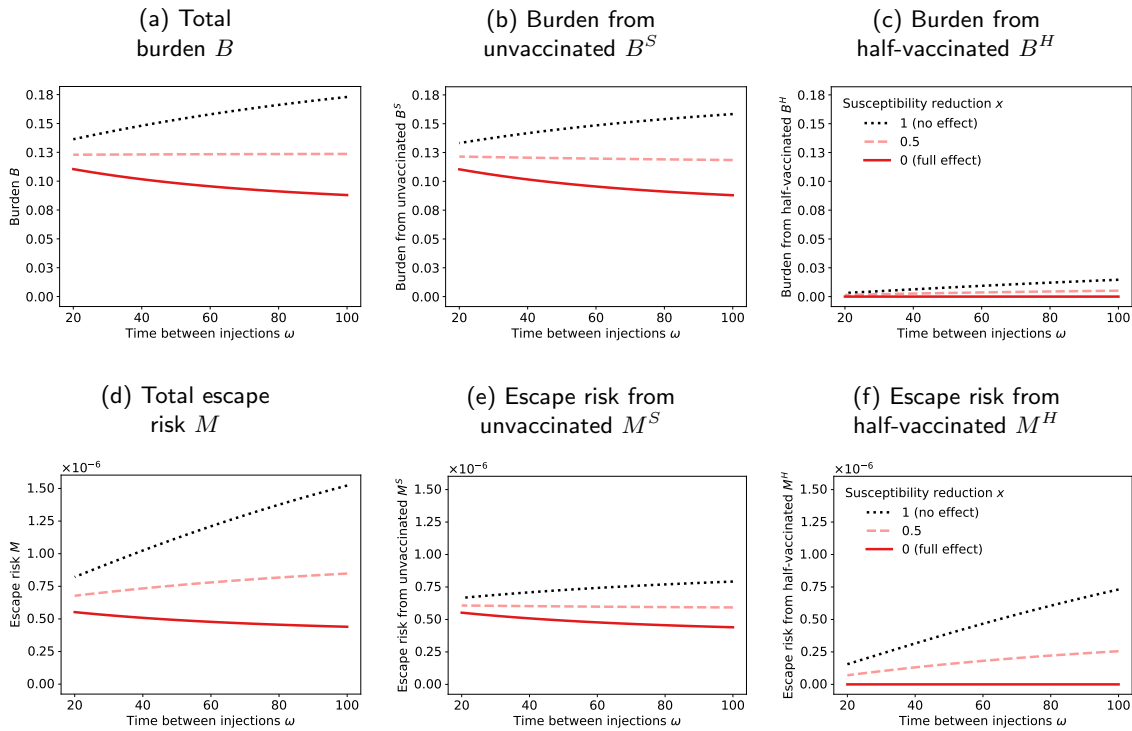
202 Regarding the effect of a potential delay of the booster shot, we observe that the strategy ω that
203 minimizes the burden is always either the no-delay strategy ($\omega = \omega_{\min}$) or a maximal delay ($\omega = \omega_{\max}$),
204 but never an intermediate prime-boost interval (Panels a and g). The same holds true for the fraction of
205 new mutant infections (Panels d and j). If the primer vaccination has neither an effect on susceptibility
206 nor on transmissibility, both the burden and the escape risk increase with the time between the two
207 injections. For strong effects in either susceptibility or transmissibility, an increase in the delay between
208 injections reduces the burden (again, this is not true for higher R_C , see below). For the escape risk, the
209 picture is different. With a strong reduction in susceptibility, a delay of the booster shot reduces the
210 escape risk. In that case, the effects of a delay on the burden and on the vaccine risk align. In contrast,
211 if the vaccine has no effect on susceptibility ($x = 1$), delaying the second dose increases the risk of
212 vaccine escape, irrespective of how well the primer dose blocks onward transmission of the wild-type
213 virus ($y = 0$; solid curve in Panel j). The effects on the burden and on the risk of vaccine escape
214 diverge in this case.

215 We therefore can conclude from these limiting cases that conflicts between reducing the burden and
216 the risk of vaccine escape can exist (see $x = 1$, $y = 0$), but the reduction in cases can also outweigh
217 the increased risk of within-host evolution of vaccine escape (see $y = 1$, $x = 0$).

218 **When do reductions in both transmissibility and susceptibility lead to trade-offs?**

219 To investigate more closely under which circumstances the effect of the strategy on the burden and the
220 fraction of escape mutants diverge, we proceed to explore the entire range of reductions in susceptibility
221 and transmissibility and vary other parameters as well. As for the limiting cases, we found that the
222 optimal strategy is either no delay or a maximal delay. We therefore focus on the burden and the
223 escape risk with the recommended interval of $\omega_{\min} = 20$ days and a maximally stretched interval of
224 $\omega_{\max} = 100$ days. To determine which strategy is optimal under the respective criterion, we consider

Effect of a reduction in susceptibility x (with $y = 1$)



Effect of a reduction in transmissibility y (with $x = 1$)

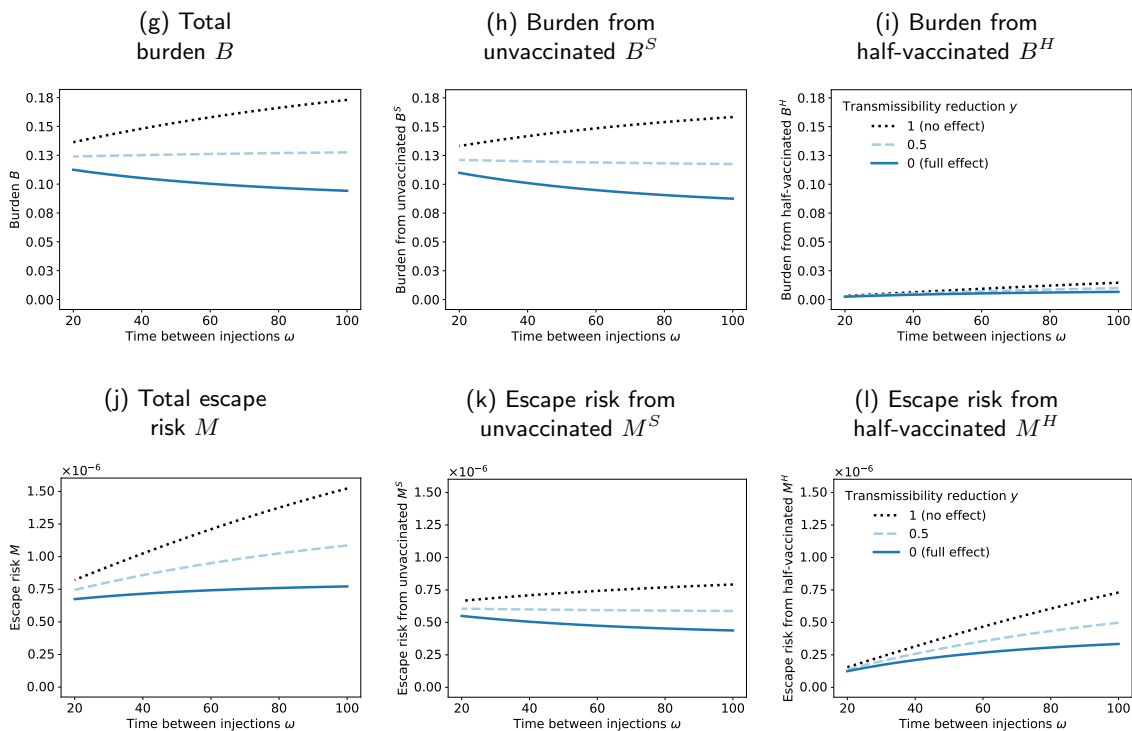


Figure 2: Burden and fraction of new mutant infections (escape risk) as a function of the prime-boost interval for the two limiting cases, in which the primer dose has an effect on susceptibility only ($y = 1$, Panels a-f) or on transmissibility only ($x = 1$, Panels g-l). The black dotted lines, where the primer dose has no effect at all ($x = y = 1$) are identical in the two parts of the figure. Reductions in susceptibility and transmissibility both reduce the burden and the risk of vaccine escape. The consequences of a delay of the booster shot depend on the effects of the primer dose. A delay may increase both the burden and the risk of vaccine escape (dotted black line in Panels a and d/Panels g and j), decrease both quantities (solid red line in Panels a and d), or decrease the burden at the cost of an increased risk of vaccine escape (solid blue line in Panels g and j). The figure shows results for our default parameter set with $\mu_V/\mu_I = 10$.

225 the differences $\Delta B = B_{\omega=100} - B_{\omega=20}$ and $\Delta M = M_{\omega=100} - M_{\omega=20}$ and ask when they are larger than
226 zero ('No delay') or smaller than zero ('Delay the 2nd dose'), see Fig. 3. For reference, the absolute
227 burden and fraction of new mutant infections with our default parameter set is given in Fig. 4 for both
228 values of ω .

229 We already know from the analysis of the limiting cases that neither strategy is optimal in minimizing
230 the burden across the entire range of x and y . This can be further seen in Fig. 3a-c. If the effect of the
231 primer dose is sufficiently strong, the delay strategy is favoured. If it is weak, the booster dose should
232 not be delayed. The area in which delaying the booster dose is beneficial is reduced if R_C is higher,
233 i.e. if the infection rate in the population is larger (cf. Panels a and b). In that case, a reduction of
234 the transmissibility on its own without any effect of the primer dose on susceptibility is insufficient to
235 justify a delay strategy. If more vaccine doses are available (higher vaccination rate λ , Panel c), the
236 choice of the strategy becomes less important, with differences in outcomes being smaller.

237 Both strategies affect the burden and the fraction of escape mutants equivalently if $\mu_V = \mu_I$
238 (compare the first two rows of the figure). For $\mu_V > \mu_I$, as expected from the general considerations
239 above, the range of x and y favoring a delay strategy is larger for the burden than for the number of
240 mutants (Panels g-l). In that case, a parameter range opens up in which a delay strategy reduces the
241 burden but increases the fraction of new mutant infections. Especially, if $\mu_V \gg \mu_I$, the risk of vaccine
242 escape is increased by a delay strategy over nearly the entire range of x and y (Panels j-l).

243 The differences ΔB and ΔM between the two strategies can be substantial, such that they become
244 relevant in choosing vaccination strategies. If vaccine doses are scarce, the strategy can change the
245 infected fraction of the population by several percentage points of the population for some combinations
246 of x and y . To put this into perspective, the cumulative fraction of Covid cases in Germany as of now
247 (end of April) is around 7% (assuming as above that about 50% of all cases are detected (Backhaus
248 et al., 2021)). Hence, the effect of the strategy is in some parameter regions of the same order of
249 magnitude as the cumulative number of cases in Germany at the time this manuscript is written.
250 Likewise, the strategy can substantially influence the total fraction of new mutant infections, doubling
251 M in some cases and with it increasing the risk that vaccine escape mutants evolve.

252 **What changes if vaccines are available right from the start of the pandemic?**

253 We finally compare the results to a scenario in which the vaccine is available right from the start of the
254 pandemic, for which we choose $I(0) = 10^{-6}$ and $R(0) = 0$ (Fig. 5). Such a scenario may be relevant
255 in case escape mutations necessitate a novel vaccination campaign and that the vaccine is available
256 before the new variant is present in all countries. In this case, the parameter range in which a delay
257 strategy minimizes the risk of escape mutants is enlarged (compare Panels c and d). However, the
258 benefit of either strategy in reducing the burden or the risk of vaccine escape is much smaller than for
259 our primary scenario, in which a vaccine becomes available only during the pandemic (compare the two
260 columns).

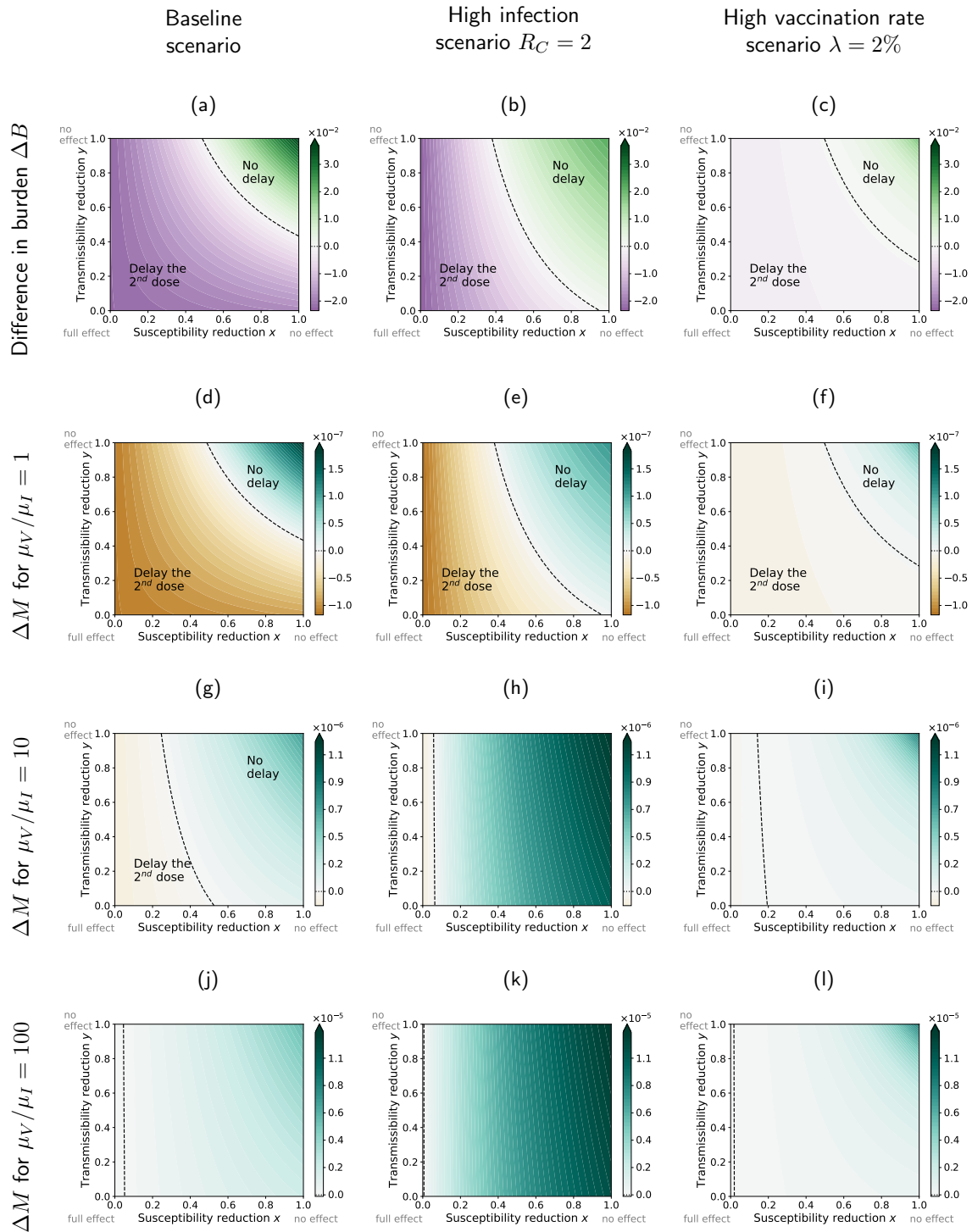


Figure 3: Differences in the burden and the fraction of new mutant infections between the strategies with a minimal and a maximal interval between the two vaccine doses, $\Delta B = B_{\omega=100} - B_{\omega=20}$ and $\Delta M = M_{\omega=100} - M_{\omega=20}$, depending on the reductions in susceptibility x and transmissibility y elicited by the primer dose. If the difference is positive, a delay increases the burden/escape risk ('No delay'). If it is negative, a delay reduces the burden/escape risk ('Delay the 2nd dose'). The three columns correspond to our baseline scenario with the default parameter set (left column), a high infection scenario with a higher value of R_C (middle column), and a high vaccination rate scenario with a larger value of λ (right column). We consider three different ratios of the per-capita mutation rates in unvaccinated and half-vaccinated individuals. As expected, for $\mu_V / \mu_I = 1$ (Panels d-f) the same strategy minimizes both the burden and the risk of vaccine escape, irrespective of x and y . For $\mu_V > \mu_I$, there is a parameter range, in which a delay reduces the burden but increases the risk of vaccine escape.

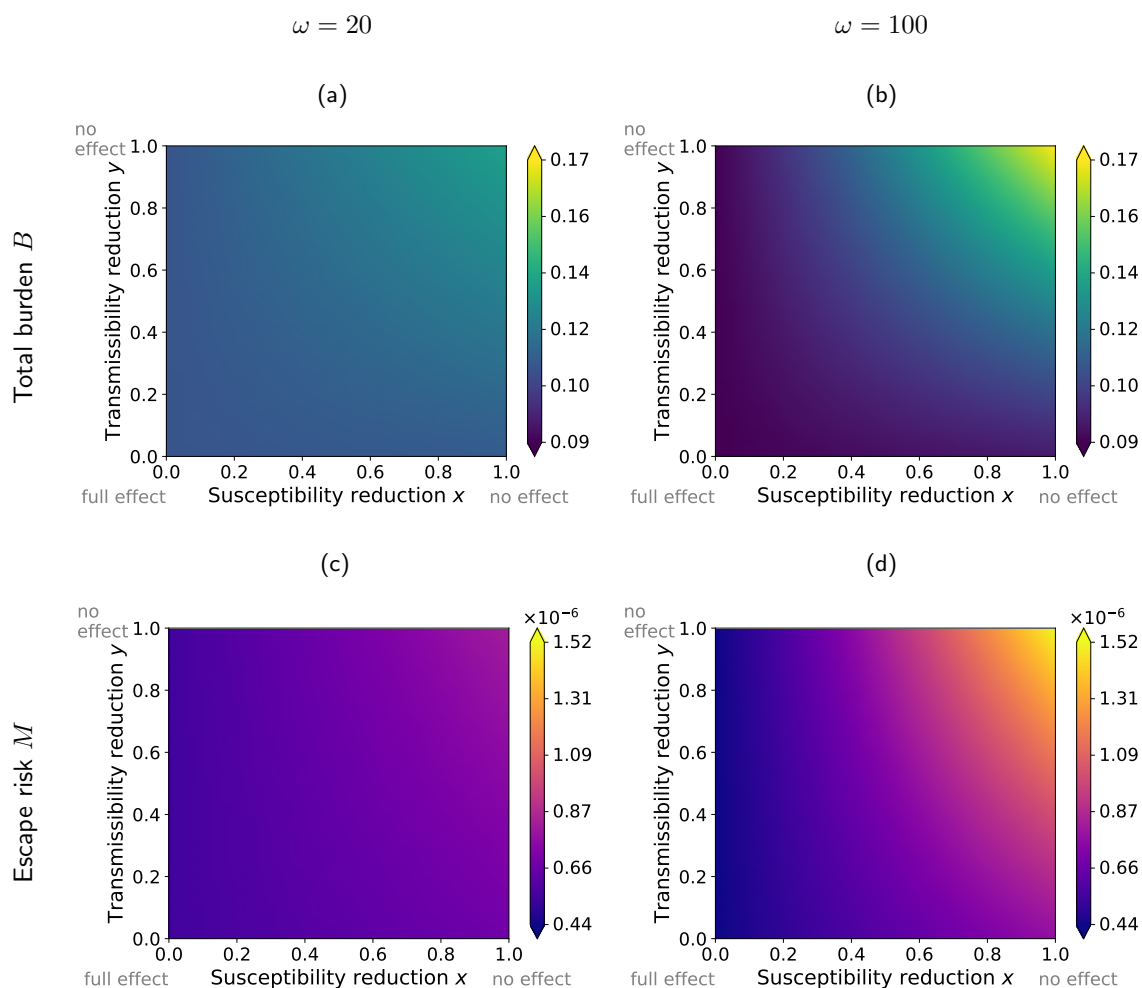


Figure 4: Total burden B and total number of new mutant infections M for a minimal prime-boost interval (Panels a and c) and for a maximal delay (Panels b and d), depending on the reductions in susceptibility x and transmissibility y elicited by the primer dose. Reducing the susceptibility or transmissibility reduces the total burden and the escape risk, but in quantitatively different ways such that a trade-off between them regarding the optimal ω can emerge. The figure shows results for our default parameter set with $\mu_V/\mu_I = 10$.

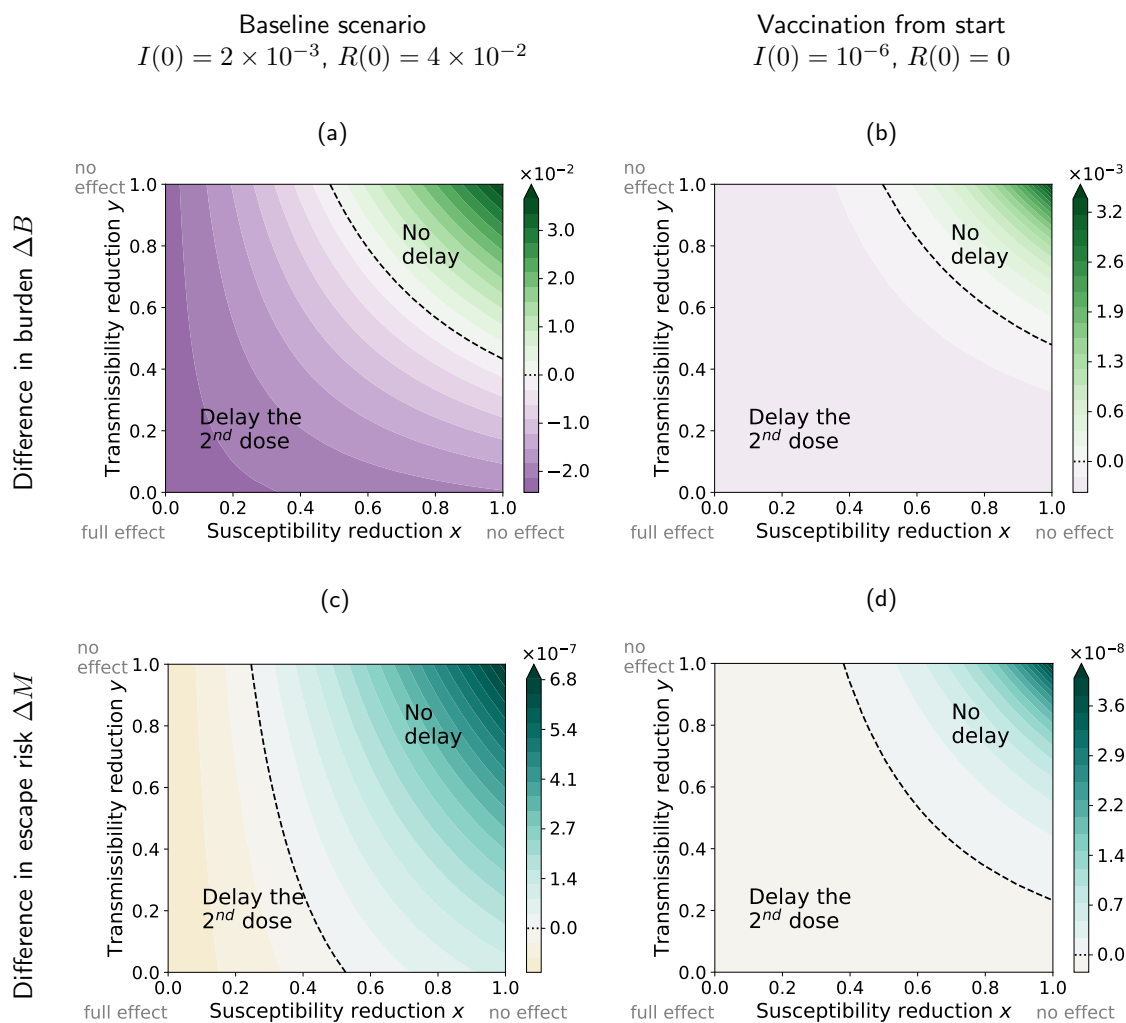


Figure 5: Comparison between a scenario, in which vaccines become available during a pandemic, (Panels a and c) and a scenario, where they are available right from the start (Panels b and d). The figure shows the differences in the burden and in the number of new mutants infections between the strategies with a minimal and a maximal interval between the two vaccine doses, $\Delta B = B_{\omega=100} - B_{\omega=20}$ and $\Delta M = M_{\omega=100} - M_{\omega=20}$. When vaccines are available from the start, differences between strategies are much smaller. (Note the different scales of the color gradients.)

261 Discussion

262 When vaccines are scarce, should we increase the timing between the primer dose and the booster
263 dose? Using an SIR-model, extended by half-vaccinated (primer dose only) and fully vaccinated
264 (primer+booster dose) individuals, we explored when the choice of the prime-boost interval – delay
265 or no delay – leads to conflicts between reducing the burden and the risk of vaccine escape evolution.
266 On short time scales, reducing the burden is the primary goal, but the risk of vaccine escape could pose
267 a major societal problem on a longer time scale.

268 What does the SIR model find?

269 If the primer dose has only a weak effect, a delay of the booster dose increases both the burden and the
270 fraction of new mutant infections. If the primer dose has a sufficiently strong effect, a delay is beneficial
271 in both respects. However, this latter area in the susceptibility-transmissibility reduction ($x-y$) plane is
272 small and limited to an extremely high reduction in susceptibility if the within-host evolution of vaccine
273 escape is much larger in half-vaccinated than in unvaccinated individuals. Between these two parameter
274 ranges in which both criteria suggest the same prime-boost interval, there is a parameter region in which
275 a delay reduces the burden – but at the cost of an increased risk of vaccine escape. This region is
276 absent if vaccine escape evolution is equally likely within half-vaccinated and unvaccinated patients.

277 Our model suggests that the conditions under which a delay strategy is favorable for reducing the
278 burden are more restrictive with a higher reproductive number R_C . This is the opposite of what has
279 been found by Matrajt et al. (2015), comparing a strict one-dose to a two-dose strategy – but not
280 focussing on the scarcity of a vaccine. In addition, there are several differences between the models.
281 E.g. Matrajt et al. (2015) assume that all individuals are vaccinated at the same time but immunity
282 takes time to build up following vaccination, while we assume that vaccine roll-out is a continuous
283 process over time but once an individual has received a vaccine shot, the effect is immediate. Other
284 differences include incomplete vs. complete vaccine coverage, presence and absence of asymptomatic
285 infections, and incomplete vs. complete protection with two doses.

286 What affects the fate of new escape variants?

287 We only consider the emergence of vaccine escape mutants but do not track their spread. As already
288 mentioned in the model section, the fate of these mutants is subject to stochasticity as long as they
289 are rare (Rella et al., 2021). Especially when the distribution of secondary cases is overdispersed – i.e.
290 when a small number of patients infects many others, while the majority of patients infect only few
291 or no other individuals –, it is likely that the mutation is lost again from the population (Lloyd-Smith
292 et al., 2005). The heterogeneity in transmission has been estimated to be rather high for SARS-CoV-2
293 (Riou and Althaus, 2020; Sun et al., 2021). Beyond these stochastic effects, there are many factors
294 that affect the spread of escape variants by changing their reproductive number, and we only discuss
295 a few examples here. Social distancing, contact tracing, and isolation of infecteds control not only the
296 wild-type virus but also escape variants. For our model, we assumed R_C to be constant throughout
297 the pandemic, but in reality the transmission coefficient changes over time due to control measures,
298 changes in behaviour, and also up to some extent seasonality. This includes in particular the extent
299 at which social distancing restrictions are lifted already during a vaccination campaign. This affects
300 the establishment of escape variants (Rella et al., 2021), but also their propagation once frequent. A
301 further factor that is crucial for the fate of escape mutants, short-term and long-term, is the degree up
302 to which vaccination is still effective against them. Cobey et al. (2021) argue that vaccination will likely
303 still grant some level of protection against escape variants. This means that they would not spread
304 well in a population with high vaccination coverage. Yet, they may accumulate additional mutations
305 over time that increase their degree of vaccine resistance. Apart from residual vaccine protection to
306 escape mutants, if different vaccines using different antigenic targets or variants of the same target are
307 employed, the spread of mutants across the population escaping from one vaccine is likely still hampered
308 by the other vaccines (McLeod et al., 2021).

309 **Are effects on the burden and on vaccine escape equally predictable?**

310 The difference that the choice of strategy makes can be substantial. Whether an extended interval
311 between shots increases or decreases the burden, crucially depends on the reductions in susceptibility
312 and transmissibility elicited by the primer dose. The number of studies estimating the effects of the
313 primer (and booster) doses of the various Covid vaccines is currently rapidly growing. With sufficient
314 information, we can probably be rather confident about the consequences of our choice with respect
315 to the disease burden. Matters are much more complicated when it comes to assessing the risk of
316 vaccine escape, which requires to make predictions about evolution in a highly complex and dynamic
317 environment. In our simple model, the range of primer dose effects for which a reduction in burden comes
318 at an increased risk of vaccine escape depends on the relative probabilities of within-host evolution of
319 escape mutants in half-vaccinated and unvaccinated individuals. There is concern that vaccine escape
320 mutants evolve more easily in partially immune individuals, but we do not know whether this is really
321 the case and if so, how much more likely it is (Branswell, 2021 Jan. 4; Cobey et al., 2021; Hanage
322 and Russell, 2021; Saad-Roy et al., 2021). We generally do not know how easily the virus can escape
323 from immunity nor do we know up to which degree mutants will evade vaccine-induced immunity and
324 potentially also naturally acquired immunity nor what their degree of cross resistance to other vaccines is
325 going to be. And even if we knew all this, the appearance and establishment of vaccine escape mutants
326 would still be a probabilistic event that may or may not happen. Moreover, escape mutants can also be
327 imported from other regions (Gerrish et al., 2021). When sufficient information on the effectiveness of
328 the primer dose and the duration of immunity is known, it is hence weighing an immediate assessable
329 benefit against an unknown future risk with unknown consequences.

330 **Conclusions**

331 Our model is not suitable to solve the dilemma nor to make any concrete recommendations. It only
332 contains the most essential elements necessary to describe the epidemiological dynamics, which, of
333 course, requires making many simplifying assumptions. The per-capita rates of escape evolution are
334 model parameters, and the model explores the population-level consequences, given a certain ratio
335 between the rates in half-vaccinated and unvaccinated patients. Such a fundamental model shows in a
336 transparent manner how the verbal arguments that have been brought forward play out in a quantitative
337 model. Maybe most importantly, the model allows to see that a delay strategy can increase or decrease
338 the risk of vaccine escape and to identify when conflicts between reducing the burden and the risk of
339 vaccine escape arise, where the effects of the primer dose in terms of reductions in susceptibility and
340 transmissibility and the relative risks of vaccine escape in half-vaccinated and unvaccinated patients
341 are key parameters. It could also provide a starting point for more detailed models that take further
342 complications into account. We hope that our model helps to provide a more solid foundation for the
343 discussion on vaccination strategies.

344 **Acknowledgements**

345 We thank Andrea Graham and Nikhil Sharma for helpful discussions. This project was made possible
346 with financial support from the German Research Foundation (DFG) and was supported by the Research
347 Training Group 2501 on Translational Evolutionary Research (RTG 2501 TransEvo).

348 **Code availability**

349 The Jupyter notebook for running the model and reproducing the figures is available at: <https://github.com/fgeoffroy/Vaccine-escape>.
350

References

351

- 352 A. S. Azman, F. J. Luquero, I. Ciglenecki, R. F. Grais, D. A. Sack, and J. Lessler. The impact of a
353 one-dose versus two-dose oral cholera vaccine regimen in outbreak settings: A modeling study. *PLOS*
354 *Medicine*, 12(8):1–18, 2015. doi: 10.1371/journal.pmed.1001867.
- 355 I. Backhaus, N. Dragano, F. Boege, K. Göbels, D. Hermsen, N. Lübke, and J. Timm.
356 Seroprävalenz COVID-19 Düsseldorf: SERODUS I & II Feldbericht und vorläufiger Ergeb-
357 nisbericht. Published online at <https://www.uniklinik-duesseldorf.de>. Retrieved from
358 [https://www.uniklinik-duesseldorf.de/fileadmin/Fuer-Patienten-und-Besucher/
359 Kliniken-Zentren-Institute/Institute/Institut_fuer_Medizinische_Soziologie/
360 Forschung/SeroDus/Feld-_und_Ergebnisbericht_SERODUS-I_SERODUS-II_03-02-2021_
361 v01.pdf](https://www.uniklinik-duesseldorf.de/fileadmin/Fuer-Patienten-und-Besucher/Kliniken-Zentren-Institute/Institute/Institut_fuer_Medizinische_Soziologie/Forschung/SeroDus/Feld-_und_Ergebnisbericht_SERODUS-I_SERODUS-II_03-02-2021_v01.pdf), 2021.
- 362 Y. M. Bar-On, A. Flamholz, R. Phillips, and R. Milo. Science Forum: SARS-CoV-2 (COVID-19) by the
363 numbers. *Elife*, 9:e57309, 2020. doi: 10.7554/eLife.57309.
- 364 L. Böttcher and J. Nagler. Decisive conditions for strategic vaccination against SARS-CoV-2. *medRxiv*,
365 2021. doi: 10.1101/2021.03.05.21252962.
- 366 H. Branswell. Britain takes a gamble with Covid-19 vaccines, upping the stakes for the
367 rest of us. *STAT*, 2021 Jan. 4. URL [https://www.statnews.com/2021/01/04/
368 britain-takes-a-gamble-with-covid-19-vaccines-upping-the-stakes-for-the-rest-of-us.
369 opensinnewtab](https://www.statnews.com/2021/01/04/britain-takes-a-gamble-with-covid-19-vaccines-upping-the-stakes-for-the-rest-of-us.opensinnewtab)).
- 370 Denis Campbell. Covid-19 second-stage vaccinations to be delayed across UK.
371 *Guardian*, 2020 Dec 30. URL [https://www.theguardian.com/world/2020/dec/30/
372 covid-19-second-stage-nhs-vaccinations-delayed-across-uk](https://www.theguardian.com/world/2020/dec/30/covid-19-second-stage-nhs-vaccinations-delayed-across-uk).
- 373 S. Cobey, D. B. Larremore, Y. H. Grad, and M. Lipsitch. Concerns about SARS-CoV-2 evolution should
374 not hold back efforts to expand vaccination. *Nature Reviews Immunology*, pages 1–6, 2021. doi:
375 10.1038/s41577-021-00544-9.
- 376 S. Gandon and T. Day. The evolutionary epidemiology of vaccination. *Journal of The Royal Society*
377 *Interface*, 4(16):803–817, 2007. doi: 10.1098/rsif.2006.0207.
- 378 P. J. Gerrish, F. Saldaña, B. Galeota-Sprung, A. Colato, E. E. Rodriguez, and J. X. V. Hernández.
379 How unequal vaccine distribution promotes the evolution of vaccine escape. *medRxiv*, 2021. doi:
380 10.1101/2021.03.27.21254453.
- 381 B. T. Grenfell, O. G. Pybus, J. R. Gog, J. L. N. Wood, J. M. Daly, J. A. Mumford, and E. C. Holmes.
382 Unifying the epidemiological and evolutionary dynamics of pathogens. *Science*, 303(5656):327–332,
383 2004. doi: 10.1126/science.1090727.
- 384 W. P. Hanage and C. A. Russell. Partial immunity and SARS-CoV-2 mutations. *Science*, 372(6540):
385 354–354, 2021. doi: 10.1126/science.abi4727.
- 386 D. A. Kennedy and A. F. Read. Why does drug resistance readily evolve but vaccine resistance does
387 not? *Proceedings of the Royal Society B: Biological Sciences*, 284:20162562, 2017. doi: 10.1098/
388 rspb.2016.2562.
- 389 A. N. M. Kraay, M. E. Gallagher, Y. Ge, P. Han, J. M. Baker, K. Koelle, A. Handel, and B. A. Lop-
390 man. Modeling the use of SARS-CoV-2 vaccination to safely relax non-pharmaceutical interventions.
391 *medRxiv*, 2021. doi: 10.1101/2021.03.12.21253481.
- 392 F. Krammer, K. Srivastava, H. Alshammary, A. A. Amoako, M. H. Awawda, K. F. Beach, M. C.
393 Bermúdez-González, (...) Bielak, D. A., and V. Simon. Antibody responses in seropositive persons
394 after a single dose of SARS-CoV-2 mRNA vaccine. *New England Journal of Medicine*, 384(14):
395 1372–1374, 2021. doi: 10.1056/NEJMc2101667.
- 396 J. Lloyd-Smith, S. Schreiber, and P. et al. Kopp. Superspreading and the effect of individual variation
397 on disease emergence. *Nature*, 438:355–359, 2005. doi: 10.1038/nature04153.

- 398 L. Matrajt, T. Britton, M. E. Halloran, and I. M. Longini. One versus two doses: What is the best use of
399 vaccine in an influenza pandemic? *Epidemics*, 13:17–27, 2015. doi: 10.1016/j.epidem.2015.06.001.
- 400 L. Matrajt, J. Eaton, T. Leung, D. Dimitrov, J. T. Schiffer, D. A. Swan, and H. Janes. Optimizing
401 vaccine allocation for COVID-19 vaccines: potential role of single-dose vaccination. *medRxiv*, 2021.
402 doi: 10.1101/2020.12.31.20249099.
- 403 D. V. McLeod, L. M. Wahl, and N. Mideo. Mosaic vaccination: how distributing different vaccines
404 across a population could improve epidemic control. *bioRxiv*, 2021. doi: 10.1101/2020.11.22.393124.
- 405 A. D. Paltiel, A. Zheng, and J. L. Schwartz. Speed versus efficacy: Quantifying potential tradeoffs in
406 COVID-19 vaccine deployment. *Annals of Internal Medicine*, 2021. doi: 10.7326/M20-7866.
- 407 S. A. Rella, Y. A. Kulikova, E. T. Dermitzakis, and F. A. Kondrashov. SARS-CoV-2 transmission,
408 vaccination rate and the fate of resistant strains. *medRxiv*, 2021. doi: 10.1101/2021.02.08.21251383.
- 409 J. Riou and C. L. Althaus. Pattern of early human-to-human transmission of Wuhan 2019 novel
410 coronavirus (2019-nCoV), December 2019 to January 2020. *Eurosurveillance*, 25(4), 2020. doi:
411 10.2807/1560-7917.ES.2020.25.4.2000058.
- 412 H. Ritchie, E. Ortiz-Ospina, D. Beltekian, E. Mathieu, J. Hasell, B. Macdonald, C. Giattino, C. Appel,
413 and M. Roser. Coronavirus (COVID-19) Vaccinations. Published online at OurWorldInData.org. Re-
414 trieved from <https://ourworldindata.org/covid-vaccinations> Original data source: Robert
415 Koch Institute.
- 416 M. Roser, H. Ritchie, E. Ortiz-Ospina, and J. Hasell. Coronavirus Pandemic (COVID-19). *Our World
417 in Data*, 2020. <https://ourworldindata.org/coronavirus>.
- 418 C. M. Saad-Roy, S. E. Morris, C. J. E. Metcalf, M. J. Mina, R. E. Baker, J. Farrar, E. C. Holmes, O. G.
419 Pybus, A. L. Graham, S. A. Levin, B. T. Grenfell, and C. E. Wagner. Epidemiological and evolutionary
420 considerations of SARS-CoV-2 vaccine dosing regimes. *Science*, 2021. doi: 10.1126/science.abg8663.
- 421 K. Sun, W. Wang, L. Gao, Y. Wang, K. Luo, L. Ren, Z. Zhan, X. Chen, S. Zhao, Y. Huang, Q. Sun,
422 Z. Liu, M. Litvinova, A. Vespignani, M. Ajelli, C. Viboud, and H. Yu. Transmission heterogeneities, ki-
423 netics, and controllability of SARS-CoV-2. *Science*, 371(6526), 2021. doi: 10.1126/science.abe2424.
- 424 U.S. Food and Drug Administration. FDA statement on following the authorized dosing sched-
425 ules for COVID-19 vaccines. [https://www.fda.gov/news-events/press-announcements/
426 fda-statement-following-authorized-dosing-schedules-covid-19-vaccines](https://www.fda.gov/news-events/press-announcements/fda-statement-following-authorized-dosing-schedules-covid-19-vaccines).
- 427 S. Vygen-Bonnet, J. Koch, C. Bogdan, T. Harder, U. Heininger, K. Kling, M. Littmann, J. Meer-
428 pohl, H. Meyer, T. Mertens, K. Michaelis, N. Schmid-Küpke, S. Scholz, M. Terhardt, M. Treskova-
429 Schwarzbach, K. Überla, M. van der Sande, M. Waize, O. Wichmann, S. Wicker, U. Wiedermann,
430 V. Wild, and R. von Kries. Beschluss der STIKO zur 4. Aktualisierung der COVID-19-Impfempfehlung
431 und die dazugehörige wissenschaftliche Begründung. *Epidemiologisches Bulletin*, 16:3–78, 2021. doi:
432 10.25646/8277.2.
- 433 World Health Organization. Interim recommendations for use of the Pfizer–BioNTech COVID-19 vac-
434 cine, BNT162b2, under emergency use listing: interim guidance, 8 January 2021. Technical docu-
435 ments, 2021.

436 **A Availability of booster doses**

437 In this section, we show that there are at all times enough doses available to administer the second
 438 dose after the chosen time interval ω , as long as $S(t) > 0$, i.e. there never arises a situation in which
 439 the second dose needs to be further delayed due to vaccine shortage. For this, we need to show that
 440 $\lambda > \frac{1}{\omega} V^H$.

441 We first consider a disease-free population ($I(t) = V_I^H(t) = 0$ for all t). We denote the fraction of
 442 half-vaccinated individuals in this scenario by V_0^H . From Eq. (1), their dynamics is given by

$$\frac{dV_0^H}{dt} = (\lambda - \frac{1}{\omega} V_0^H) - \frac{1}{\omega} V_0^H \quad \text{with} \quad V_0^H(0) = 0, \quad (\text{A.1})$$

443 which solves to

$$V_0^H(t) = \frac{\lambda\omega}{2} \left(1 - e^{-\frac{2}{\omega}t}\right). \quad (\text{A.2})$$

444 With this, we have:

$$\lambda - \frac{1}{\omega} V_0^H = \lambda \left(\frac{1}{2} + e^{-\frac{2}{\omega}t}\right) > 0. \quad (\text{A.3})$$

445 We now turn to a population, in which the virus is spreading. In this case, as given in Eq. (1),
 446 there is an infection in the differential equation describing the changes in the fraction of half-vaccinated
 447 individuals:

$$\frac{dV^H}{dt} = (\lambda - \frac{1}{\omega} V^H) - \frac{1}{\omega} V^H - \underbrace{x\beta V^H (I + yV_I^H)}_{\equiv V^H f(t)} \quad \text{with} \quad V^H(0) = 0. \quad (\text{A.4})$$

Comparing to Eq. (A.1), we see that

$$\frac{dV^H}{dt} \leq \frac{dV_0^H}{dt} \quad \text{and} \quad V^H(0) = V_0^H(0) = 0.$$

Therefore:

$$V^H(t) \leq V_0^H(t) \quad \Rightarrow \quad \lambda - \frac{1}{\omega} V^H(t) \geq \lambda - \frac{1}{\omega} V_0^H(t) > 0,$$

448 where the last step follows from Eq. (A.3). This implies $\lambda > \frac{1}{\omega} V^H$.