

1        **Short-term effects of BNT162b2 mRNA COVID-19**  
2        **vaccination on physiological measures: a prospective**  
3        **study**

4        **Yftach Gepner, PhD<sup>1,+</sup>, Merav Mofaz, MSc<sup>2</sup>, Shay Oved, MSc<sup>2</sup>, Matan Yechezkel, MSc<sup>2</sup>,**  
5        **Keren Constantini, PhD<sup>1</sup>, Nir Goldstein, PhD<sup>1</sup>, Erez Shmueli, PhD<sup>2,+</sup>, and Dan Yamin,**  
6        **PhD<sup>2,3,+,\*</sup>**

7        <sup>1</sup>Department of Epidemiology and Preventive Medicine, School of Public Health, Sackler Faculty of Medicine, and  
8        Sylvan Adams Sports Institute, Tel-Aviv University, Tel-Aviv, Israel

9        <sup>2</sup>Department of Industrial Engineering, Tel-Aviv University, Tel-Aviv, Israel

10       <sup>3</sup>Center for Combatting Pandemics, Tel-Aviv University, Tel-Aviv, Israel

11       <sup>+</sup>Equal contribution

12       <sup>\*</sup>Corresponding author: dan.yamin@gmail.com

13

## 14 **Abstract**

15 **Background:** Clinical trial guidelines for assessing the safety of vaccines, including the FDA  
16 criteria, are primarily based on subjective, self-reported questionnaires. Despite the tremendous  
17 technological advances in recent years, objective, continuous assessment of physiological  
18 measures post-vaccination is rarely performed.

19 **Methods:** To evaluate the short-term effects of the BNT162b2 COVID-19 vaccine on  
20 physiological measures, we conducted a prospective observational study during the mass  
21 vaccination campaign in Israel. 160 individuals >18 years who were not previously found to be  
22 COVID-19 positive and who received the second dose of the COVID-19 vaccine between 1  
23 January, 2021, and 13 March, 2021 were equipped with a chest-patch sensor and a dedicated  
24 mobile application. The chest-patch sensor continuously measured 13 physiological vitals one  
25 day before the inoculation (baseline), for four days: heart rate, blood oxygen saturation,  
26 respiratory rate, systolic and diastolic blood pressure, pulse pressure, mean arterial pressure, heart  
27 rate variability, stroke volume, cardiac output, cardiac index, systemic vascular resistance, and  
28 body temperature. The mobile application collected daily self-reported questionnaires starting one  
29 day before the inoculation, for 15 days on local and systemic reactions, sleep quality, stress levels,  
30 physical activity, and mood levels.

31 **Findings:** Within the first 48 hours post-vaccination, we identified significant changes (p-value  
32 <0.05) in nearly all 13 chest-patch indicators compared to their baseline levels. 48.5% (n=78)  
33 reported no local or systemic reaction. Nevertheless, we identified considerable changes in chest-  
34 patch indicators during the first 48 hours post-vaccination also in this group of presumably  
35 asymptomatic participants. Within three days from vaccination, these measures returned to  
36 baseline levels in both groups, further supporting the safety of the vaccine.

37     **Interpretation:** Our work underscores the importance of obtaining objective physiological data  
38     in addition to self-reported questionnaires when performing clinical trials, particularly in ones  
39     conducted in very short time frames.

40     **Funding:** The European Research Council (ERC) project #949850.

41

## 42 **Introduction**

43 Vaccination is widely accepted as the most prominent measure in the fight against COVID-19,  
44 posing the greatest hope for ending this major global health pandemic and related economic  
45 crisis.<sup>1,2</sup> Consequently, an unprecedented international effort by private and public institutions  
46 alike was directed at accelerating the traditionally lengthy vaccine-development process.<sup>3-5</sup> On 2  
47 December 2020, less than a year from the pandemic outbreak, the first vaccine, BNT162b2 mRNA  
48 (Pfizer-BioNTech), was granted an Emergency Use Authorization (EUA) by the UK Medicines  
49 and Healthcare products Regulatory Agency (MHRA).<sup>6</sup> This initial authorization was followed by  
50 rapid authorizations for emergency use in several countries, with the US Food and Drug  
51 Administration (FDA) among the first to do so.<sup>7</sup> The promising BNT162b2 vaccine was  
52 demonstrated to have 95% efficacy in preventing symptomatic COVID-19 in clinical trials,<sup>8</sup> and  
53 92% efficacy in a nationwide mass vaccination.<sup>9</sup>

54  
55 Safety data from a randomized, controlled trial suggests a favorable safety profile for the  
56 BNT162b2 vaccine.<sup>8</sup> Specifically, the local and systemic reactions reported during the first seven  
57 days after vaccination were mostly mild to moderate, with a median onset of 0–2 days after vaccine  
58 administration and a median duration of 1–2 days. The most frequently reported reactions were  
59 fatigue, headache, muscle pain, chills, joint pain, and fever. The incidence of serious adverse  
60 events was low and was similar between vaccine- and placebo-treated participants. The safety of  
61 the new vaccine over a median of two months post-vaccination was similar to that of other viral  
62 vaccines. A considerable fraction of the participants did not report any reaction or adverse event.  
63 Likewise, several other vaccine candidates, including ChAdOx1 nCoV-19 (Oxford/AstraZeneca)  
64 and mRNA-1273 (Moderna), received EUAs following similar encouraging safety results in  
65 randomized, controlled trials.<sup>10-12</sup>

66  
67 Nevertheless, concerns regarding potential adverse effects from vaccines have recently led to the  
68 suspension of the ChAdOx1 nCoV-19 vaccination campaigns in several European countries,<sup>13</sup> and  
69 may have reinforced the public hesitancy towards COVID-19 vaccines. These concerns  
70 underscore the importance of extracting as much information as possible from clinical trials.  
71 However, to date, clinical trial guidelines for assessing the safety of vaccines, including the FDA  
72 criteria,<sup>14</sup> are primarily based on subjective, self-reported questionnaires. Despite the tremendous  
73 technological advances in recent years, objective, continuous assessment of physiological  
74 measures post-vaccination is rarely performed.

75  
76 Here, we evaluated the short-term effects of the BNT162b2 COVID-19 vaccine on physiological  
77 measures. We followed a cohort of 160 participants who received the second dose of the  
78 BNT162b2 vaccine for 96 hours, from 24 hours prior to vaccine administration until 72 hours after  
79 the inoculation. Participants were fit with a chest-patch sensor that monitored objectively and  
80 continuously 13 different physiological indicators. Additionally, a dedicated mobile application  
81 was used to record daily self-reported questionnaires on local and systemic reactions and various  
82 well-being indicators. We identified considerable changes in chest-patch indicators during the first  
83 48 hours post-vaccination also in this group of presumably asymptomatic participants. These  
84 measures returned to baseline levels in both groups, further supporting the safety of the vaccine.  
85 Our findings underscore the importance of accounting for objective technological advances in  
86 clinical trials to more accurately understand the invisible impact of the vaccine on our respiratory,  
87 cardiovascular, and hemodynamic systems. Extracting as much information as possible from

88 clinical trials, particularly during an emergency, is crucial for a more comprehensive determination  
89 of vaccine safety.

## 90 **Materials and Methods**

91

### 92 **Study design and participants**

93 Our study includes a prospective cohort of 160 participants who were not previously found to be  
94 COVID-19 positive and received the second dose of the BNT162b2 mRNA COVID-19 vaccine  
95 between 1 January, 2021, and 13 March, 2021 (study protocol is available at the appendix pp 25-  
96 35). As reported reactions were considerably more severe after the second dose compared to the  
97 first,<sup>8</sup> we focused on the second dose of vaccine. Out of the 160 participants in this study, 90  
98 (56.25%) were women, and 70 (43.75%) were men. Their age ranged between 21 and 78 years,  
99 with a median age of 40. Participants were equipped with a chest-patch sensor and were monitored  
100 for a period of four days, starting one day prior to vaccine administration. In addition, participants  
101 installed a dedicated mobile application and were requested to fill in a daily questionnaire, starting  
102 one day prior to the inoculation, for a period of 15 days. For each participant, the 24-hour period  
103 prior to vaccination served as a baseline.

104

105 In order to recruit participants and ensure they complete all the study's requirements, we hired a  
106 professional survey company. Potential participants were recruited through advertisements in  
107 social media, online banners, and word-of-mouth. The survey company was responsible for  
108 guaranteeing the participants met the study's requirements, in particular, that they agreed to wear  
109 the chest-patch sensor and fill in the daily questionnaires.

110

111 Participants were met in person, roughly 24 hours prior to vaccination, and received a detailed  
112 explanation about the study, after which they were requested to sign an informed consent form.  
113 Then, participants were asked to complete a one-time enrollment questionnaire and install two  
114 applications on their mobile phones: an application that passively collects data from the chest-  
115 patch sensor and the PerMed application, allowing participants to fill the daily questionnaires.

116 To better understand the effects of the second vaccine dose on physiological measures, we also  
117 monitored a subset of 25 participants, with an identical procedure, when receiving their first  
118 vaccination dose.

### 119 **The chest-patch sensor**

120 The photoplethysmography (PPG)-based chest monitors purchased and used in this study collects  
121 the following 13 indicators of vital signs: heart rate, blood oxygen saturation, respiratory rate,  
122 systolic and diastolic blood pressure, pulse pressure, mean arterial pressure, heart rate variability,  
123 stroke volume, cardiac output, cardiac index, systemic vascular resistance (SVR) and body  
124 temperature. Together, these indicators of vital signs provide a comprehensive assessment of the  
125 respiratory, cardiovascular, and hemodynamic state. The chest patch sensor received FDA  
126 clearance for measures of heart rate, respiratory rate, and systolic and diastolic blood pressure  
127 (clearance number K190792) and CE Mark approval for all 13 measures (CE 2797) (Biobeat  
128 Technologies Ltd). To the best of our knowledge, this is the only cleared wearable wireless  
129 medical-grade device to provide all these measurements. The sensor tracks vital signs derived from  
130 changes in the pulse contour, following baseline calibration using an approved non-invasive, cuff-  
131 based device, and is based on Pulse Wave Transit Time (PWTT) technology, combined with Pulse  
132 Wave Analysis (PWA) (see, for example, <sup>15,16</sup>). The sensor continuously collected data at 10-  
133 minute intervals for the entire duration of the 96-hour experiment.

134 **PerMed mobile application**

135 Developed originally to support the PerMed study,<sup>17</sup> the PerMed mobile application passively  
136 collects smartphone sensory data, as well as allows participants to fill the daily questionnaires.  
137 The daily questionnaire we used included questions about: mood level (on a scale of -2 [awful] to  
138 2 [excellent]), stress level (on a scale of -2 [very low] to 2 [very high]), sleep quality (on a scale  
139 of -2 [awful] to 2 [excellent]), physical activity (in minutes), clinical symptoms (from a closed list  
140 of local and systemic reactions observed in the BNT162b2 mRNA Covid-19 clinical trial,<sup>8</sup> with  
141 an option to add other symptoms as free text).

142 In order to improve the quality and reliability of the data and to ensure its continuous collection,  
143 we applied the following two measures: 1) Participants who did not complete the daily  
144 questionnaire by 7 pm received a notification in their mobile app to fill the questionnaire; 2) We  
145 developed a dedicated dashboard that helped us identify when participants did not fill in the daily  
146 questionnaires. Those participants were contacted by the survey company and were encouraged to  
147 cooperate better.

148 **Statistical analysis**

149 Before analyzing the data, we performed several preprocessing steps. With regard to the daily  
150 questionnaires, in cases where participants filled in the daily questionnaire more than once on a  
151 given day, only the last entry for that day was considered, as it was reasoned that the last one likely  
152 best represented the entire day. Self-reported symptoms that were entered as free text were  
153 manually categorized. With regard to the chest-patch indicators, data were first aggregated per  
154 hour (by taking the mean value). Then, to impute missing values, we performed a linear  
155 interpolation.

156



157 To examine the changes in each chest-patch indicator over the 72 hours post-vaccination compared  
158 with the 24-hour baseline period prior to vaccination, we performed the following steps. For each  
159 indicator, for each hour  $h$  of the 72 hours post-vaccination, we calculated for each individual the  
160 mean value in the five-hour sliding window:  $[h-4, h-3, h-2, h-1, h]$ . Then, we calculated the  
161 relative change in the percentage of this value compared to the corresponding five-hour window  
162 in the baseline period. Finally, we calculated the mean value for hour  $h$  over all 160 participants,  
163 as well as the 90% confidence interval, corresponding to a significance level of 0.05 in a one-sided  
164 t-test (figure 1). We performed a similar analysis for the 25 participants who received the first  
165 vaccine dose (appendix pp 44-45).

166  
167 Next, for each of the three days after the vaccination, we calculated the percentage of participants  
168 who reported new local or systemic reactions compared to their baseline period. For each reaction,  
169 a 90% confidence interval was calculated assuming a beta distribution, with parameter  $\alpha$   
170 corresponding to the number of participants reporting that reaction plus one (i.e., “successes”),  
171 and parameter  $\beta$  corresponding to the number of participants who did not report that reaction plus  
172 one (i.e., “failures”).

173  
174 Similarly, we calculated the changes in the well-being indicators reported post-vaccination  
175 compared to those reported in the baseline period. Specifically, for each indicator, we calculated  
176 the difference between the value in each day and the corresponding value in the baseline period.  
177 Then, we calculated the mean difference value over all participants and a 90% confidence interval  
178 using a  $t$  distribution.

179

180 Finally, we examined the difference between symptomatic and asymptomatic participants with  
181 regard to changes in the chest-patch indicators, stratified by the number of days post-vaccination  
182 (1-3) and part of the day (day or night) (Figure 3). For a given day post-vaccination, symptomatic  
183 participants were defined as those who reported at least one reaction on that day that they did not  
184 report in the baseline period. Asymptomatic individuals were defined as those who reported no  
185 reactions on that day. We defined nighttime as the time interval between 12:00 am and 7:00 am  
186 and daytime between 7:00 am and 12:00 am. This day-night definition is consistent with the  
187 observed movement patterns of the participants throughout the study. For each participant, we  
188 calculated the mean indicator value for each day and part of the day post-vaccination. Then, we  
189 calculated the relative change in percentages of these values compared to their corresponding  
190 values in the baseline period. Next, we calculated the mean values of symptomatic participants  
191 and asymptomatic participants, as well as their corresponding 90% confidence intervals using a *t*  
192 distribution. Finally, unequal variances *t*-tests were used to evaluate the differences between  
193 symptomatic and asymptomatic participants.

#### 194 **Ethical Approval**

195 Before participating in the study, all subjects were advised, both orally and in writing, as to the  
196 nature of the study and gave written informed consent to the study protocol (appendix pp 25-35),  
197 which was approved by the Tel-Aviv University Institutional Review Board (0002522-1). All data  
198 were de-identified, and no personal identifiable information was gathered.

199

#### 200 **Role of the funding source**

201 The funders of the study had no role in data collection, data analysis, data interpretation, or  
202 writing of the manuscripts.

203 **Results**

204 Between 1 January 2021, and 13 March 2021, a total of 166 participants were recruited. Among  
205 them, 160 participants completed the trial, and their data were analyzed; five participants left the  
206 trial early, and one participant was provided with a malfunctioning chest-patch sensor. Among  
207 these participants, 56.25% were females, 13.75% were obese (body-mass index of at least 30.0),  
208 18.12% had high blood pressure, and 20.00% had at least one comorbidity. The median age was  
209 40 years, and 10.63% of participants were older than 59 years of age (Table 1).

210

211

212

213

214

215

216

217

218

219

220

221

222

**Table 1.** Characteristics of the participants

Characteristic	Number of participants (%) (N=160)
<b>Gender</b>	
Male	70 (43.75%)
Female	90 (56.25%)
<b>Age group</b>	
18-39 yr	91 (56.87%)
40-59 yr	52 (32.50%)
≥ 60 yr	17 (10.63%)
<b>Body-mass index*</b>	
< 30.0	128 (80.00%)
≥ 30.0	22 (13.75%)
Unspecified	10 (6.25%)
<b>High blood pressure measured at baseline (Systolic &gt;140 or Diastolic &gt;90)**</b>	
No	131 (81.88%)
Yes	29 (18.12%)
<b>Household size</b>	
≤ 2	67 (41.87%)
> 2	83 (51.88%)
Unspecified	10 (6.25%)
<b>Self-reported illness in the past 30 days</b>	
No	104 (65.00%)
Yes	46 (28.75%)
Unspecified	10 (6.25%)
<b>Comorbidities</b>	
No	128 (80.00%)
Hypertension	11 (6.87%)
Diabetes	7 (4.37%)
Heart disease	3 (1.87%)
Chronic lung disease	5 (3.12%)
Renal failure	1 (0.62%)
Unspecified	12 (7.50%)

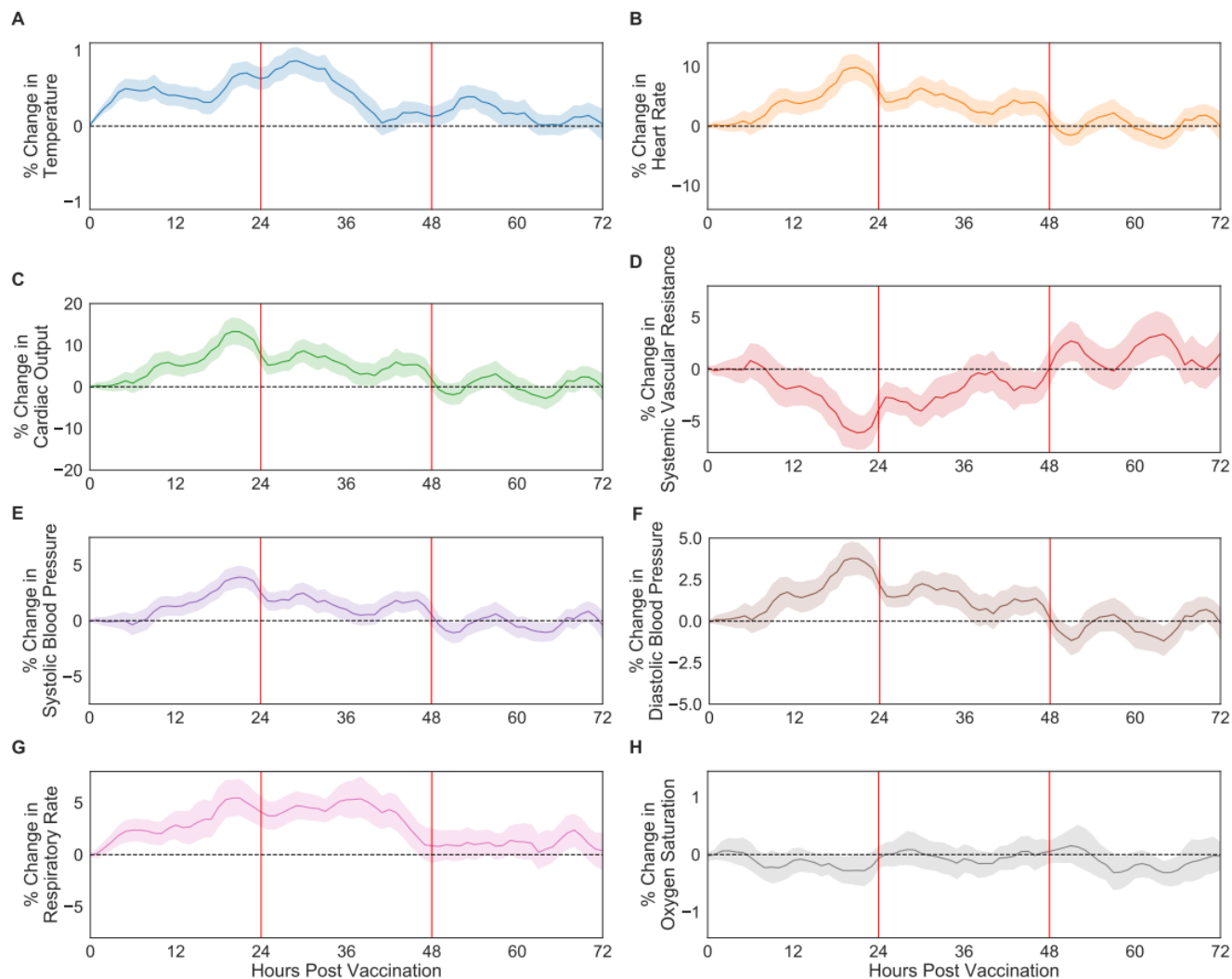
\* The body-mass index is the weight in kilograms divided by the square of the height in meters

\*\* Blood pressure was measured a day before inoculation

223  
 224 Within the first 48 hours post-vaccination, we identified significant changes in nearly all 13 chest-  
 225 patch indicators compared to their baseline levels (figure 1 and appendix p 36). For example, at  
 226 their peak, the heart rate increased by 9.85% (90% CI, 7.71% to 11.99%), the systolic blood  
 227 pressure increased by 3.91% (90% CI, 2.97% to 4.87%), and the diastolic blood pressure increased  
 228 by 3.78% (90% CI, 2.82% to 4.74%), compared to baseline levels. By contrast, we observed no

229 significant differences in blood oxygen saturation (figure 1B). Following the initial 48 hours, these  
230 changes faded, with measurements returning to their baseline levels.

231

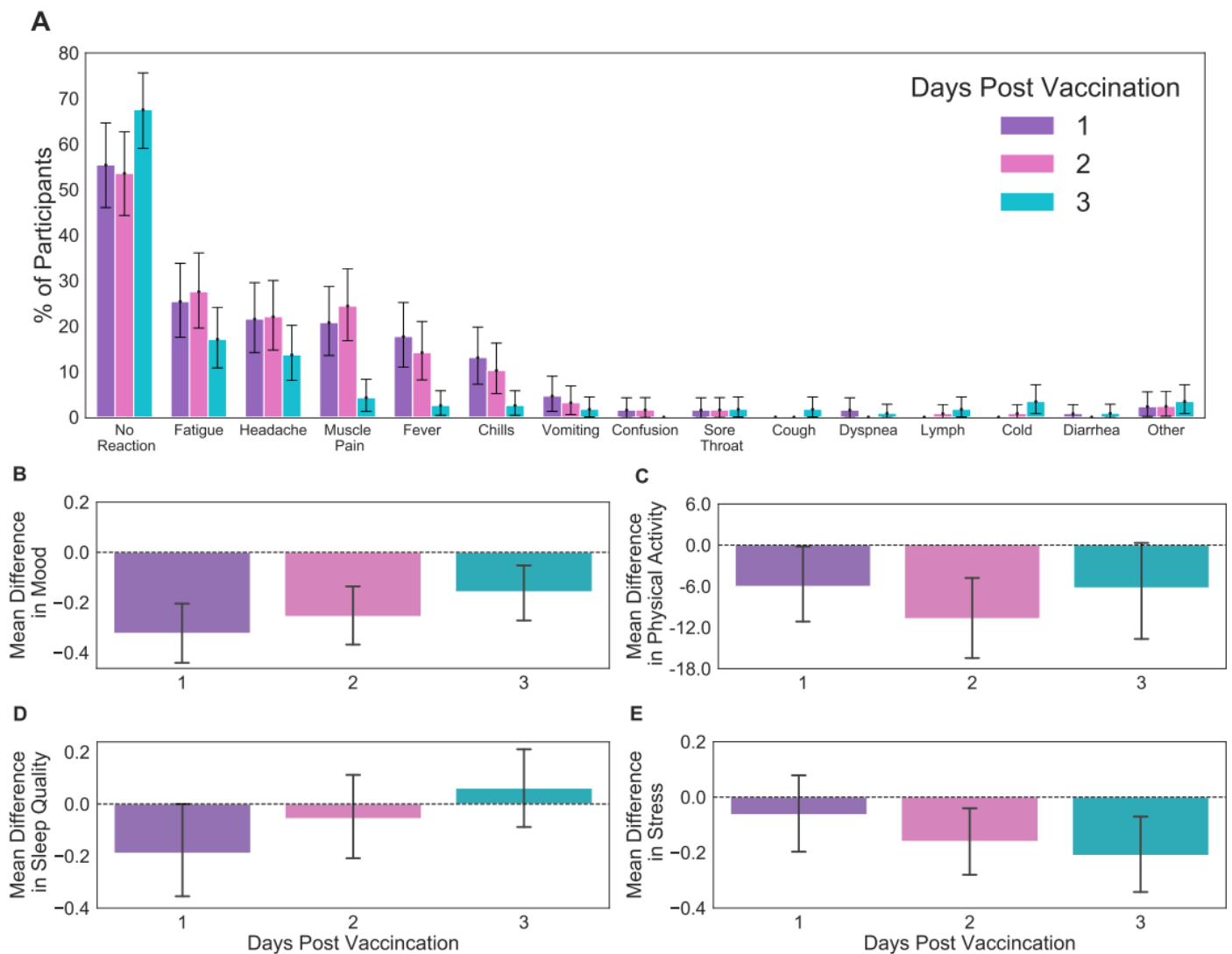


232

233 **Figure 1.** Percentage of change in respiratory, cardiovascular, and physiological indicators recorded by the chest-  
234 patch sensor compared to their baseline levels: (A) body temperature, (B) heart rate, (C) cardiac output, (D) systemic  
235 vascular resistance, (E) systolic blood pressure, (F) diastolic blood pressure, (G) respiratory rate, and (H) oxygen  
236 saturation. Mean values are depicted as solid lines, 90% confidence intervals are presented as shaded regions, and  
237 horizontal dashed lines represent no change compared to the baseline levels.

238

239 Focusing on self-reported reactions, we find consistent trends with those observed in the  
 240 BNT162b2 mRNA vaccine clinical trial (figure 2A and appendix pp 37-38). Specifically, the most  
 241 frequent reactions reported via the self-reported questionnaires collected from the mobile  
 242 application were fatigue, headache, muscle pain, fever, and chills. Consistent with our analysis of  
 243 the chest-patch indicators, participants reported most of the reactions during the first two days  
 244 post-vaccination, followed by a sharp decline in reporting on the third day. Importantly, almost  
 245 half of the participants (48.5%) did not note any local or systemic reaction.



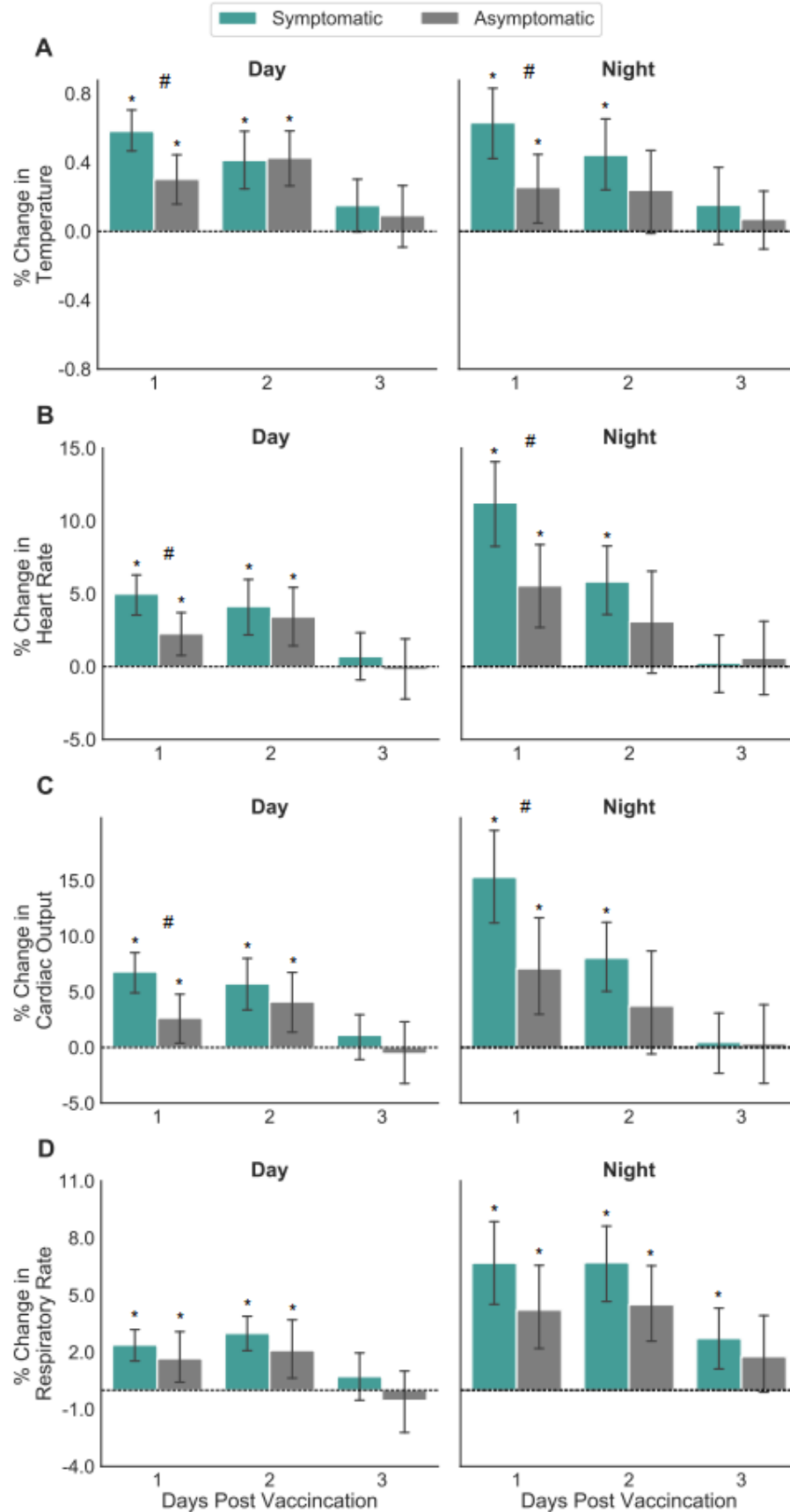
246 **Figure 2.** Local and systemic reactions and well-being indicators reported by participants through the mobile  
 247 application. (A) local and systemic reactions, (B) mood level, measured on a 1 to 5 Likert scale, (C) duration of

248 physical activity, measured in minutes, (D) sleep quality, measured on a 1 to 5 Likert scale, and (E) stress level,  
249 measured on a 1 to 5 Likert scale. Well-being indicators were calculated by subtracting the baseline values from the  
250 daily values. Error bars represent 90% confidence intervals. Horizontal dashed lines represent no change compared  
251 to the baseline levels.

252  
253 We also observe considerable changes in self-reported well-being indicators post-vaccination  
254 (figure 2B-E). During the first two days post-vaccination, participants exhibited a significant  
255 reduction in mood level (figure 2B), sleep quality (figure 2C), and time spent on physical activity  
256 (figure 2D) compared to baseline levels. Interestingly, participants reported significantly lower  
257 stress levels on the second- and third-day post-vaccination compared to the day prior to vaccination  
258 (figure 2E).

259 Importantly, we identified significant changes in chest-patch indicators during the first two days  
260 post-vaccination also in presumably asymptomatic participants (figure 3 and appendix pp 39-40).  
261 Specifically, during the daytime of the first two days post-vaccination, nearly all 13 chest-patch  
262 indicators significantly changed not only for symptomatic participants (i.e., those who reported at  
263 least one local or systemic reaction) but also for asymptomatic participants (i.e., those who did not  
264 report any local or systemic reaction). During the night hours, among the asymptomatic  
265 participants, significant changes were observed mainly on the first night post-vaccination.  
266 Conversely, among the symptomatic participants, significant changes were observed on both the  
267 first- and second-nights post vaccination. Moreover, the changes observed for symptomatic  
268 participants were found to be significantly higher than those of asymptomatic individuals in 9 out  
269 of the 13 chest-patch indicators during the first day post-vaccination and in 8 out of the 13 chest-  
270 patch indicators during the first night post-vaccination (unequal variances *t*-test, *p*-value<0.05).

271





273 **Figure 3.** Percentage of change in chest-patch indicators for participants who reported at least one local or systemic  
274 reaction (symptomatic) and those who reported no reaction (asymptomatic) during the daytime and the nighttime: (A)  
275 body temperature, (B) heart rate, (C) cardiac output, and (D) respiratory rate. Error bars represent 90% confidence  
276 intervals. Horizontal dashed lines represent no change compared to the baseline levels. Significant differences from  
277 baseline at a 0.05 level are marked with \*. Significant differences between symptomatic and asymptomatic  
278 participants at a 0.05 level are marked with #.

279  
280 We also analyzed the changes in chest-patch indicators compared to baseline levels, stratified by  
281 age group, gender, and vaccine dose. Participants 60 years old and above exhibited milder, albeit  
282 not significant, changes than those below 60 years old in nearly all chest-patch indicators  
283 (appendix pp 41-45). We found no differences between men and women in chest-patch indicators.  
284 In contrast to the second vaccine dose, examining the subset of 25 participants who were  
285 monitored when receiving their first vaccine dose revealed no difference in vitals during the first  
286 48 hours post-inoculation (appendix pp 44-45).

287  
288 **Discussion**  
289 Our key findings suggest that multiple physiological measures significantly increase following  
290 BNT162b2 vaccine administration in both participants who reported and those who did not report  
291 local and systemic reactions. Within three days from vaccination, these measures returned to  
292 baseline levels in both groups, further supporting the safety of the vaccine.

293  
294 We identified several aspects that strengthen the short-term safety of the BNT162b2 vaccine. First,  
295 we found that all the physiological measures returned to their baseline levels within three days  
296 from vaccination. Second, we observed no change in oxygen saturation levels compared to their  
297 baseline levels, indicating that major adverse health consequences are less likely. Third, reports of

298 local and systemic reactions declined considerably on the third day following vaccination. Fourth,  
299 well-being indicators reported by the participants, including mood, sleep quality, and physical  
300 activity, also returned to their baseline levels by the third day. Interestingly, the reported stress  
301 levels significantly improved on the second and third days after vaccination, suggesting that  
302 participants were concerned prior to vaccine administration. Thus, our study quells, in part,  
303 concerns raised by those hesitant to be vaccinated on the grounds of potential adverse vaccination  
304 consequences by demonstrating that such consequences are likely to fade after a few days.

305  
306 We identified a considerable decline in SVR during the first two days after inoculation. Such a  
307 decline is typically regarded as an indication of inflammatory response. Hematology studies  
308 performed by Pfizer and reported in the VRBPAC document,<sup>18</sup> suggest that the most commonly  
309 observed changes were transient grade 1 or 2 decreases in lymphocytes, one to three days after the  
310 first vaccine dose. These decreases returned to baseline levels within 6-8 days of the first dose.  
311 The authors note that RNA vaccines are known to induce type I interferon, which regulates  
312 lymphocyte recirculation and are associated with transient migration and redistribution of  
313 lymphocytes. This rapid rebound of lymphocytes supports the notion that they were not depleted,  
314 but temporarily migrated out of the peripheral blood and subsequently re-entered the bloodstream  
315 by the next assessment time. Although these hematology observations were after the first dose, the  
316 change in vascular resistance could provide compelling support for the idea of migration of  
317 lymphocytes out of circulation. However, our study did not include hematology tests. Though SVR  
318 is regarded as an indication of the inflammatory response, the fact it is counterbalanced with  
319 cardiac output, and the lack of other inflammatory indicators, including body temperature, show  
320 that the decrease is not necessarily directly related in this situation to inflammation. This could be

321 further looked at in future studies, either with this specific vaccine or with any other, emphasizing  
322 the need to exhaust all available data in clinical research to detect – as early as possible – any side  
323 effects among all volunteers.

324  
325 Our study includes several limitations. First, our cohort includes only 160 participants and may  
326 not adequately represent the vaccinated population in Israel and elsewhere. Nevertheless, despite  
327 this considerably small sample size, trends observed by the chest-patch sensor were found to be  
328 significant. Moreover, the proportion of those who reported local and systemic reactions and the  
329 type of reactions noted were similar to those observed in clinical trials <sup>8</sup>. Second, all participants  
330 received the BNT162b2 vaccine, which was the only vaccine used in Israel. Given the similarities  
331 regarding the safety observed between different COVID-19 vaccines,<sup>8,11,12</sup> we believe our findings  
332 are likely to be qualitatively similar in other vaccine types. Third, the rich data gathered by the  
333 chest-patch sensor was recorded for a relatively short period, four days. However, our findings  
334 from both the chest-patch sensor and the daily questionnaire (which was collected for a more  
335 extended period, i.e., 14 days) reveal that the vast majority of local and systemic reactions faded  
336 within two days. Fourth, we did not explicitly control for the effects of the clinical trial setting  
337 (i.e., participating in a trial, wearing a chest-patch sensor, potential concerns from the vaccine,  
338 etc.). While one may argue that the observed changes may be an artifact of the trial setting, we  
339 would expect to find these changes during the first vaccine dose as well. However, since we found  
340 no differences in most vitals than baseline levels in the subset of participants who received their  
341 first dose, we believe the changes observed after the second dose arises from an actual reaction to  
342 the vaccine.

343

344 About half of the participants (48.5%) did not report any local or systemic reaction following  
345 vaccination, which is consistent with previous reports from the clinical trial <sup>8</sup>. Yet, we show that  
346 both symptomatic and asymptomatic participants had substantial objective physiological changes  
347 regardless of their subjective reports. Hence, our work underscores the importance of obtaining  
348 objective physiological data in addition to self-reported questionnaires when performing clinical  
349 trials, particularly in those conducted in very short time frames.

350  
351 Whereas self-reported trends are widely described in the scientific literature, no study or vaccine  
352 clinical trial has reported the comprehensive effects of the COVID-19 vaccine on physiological  
353 measures. In fact, current US FDA, and European Medicines Agency (EMA) guidelines for  
354 assessing the safety of newly developed vaccines are primarily based on subjective, self-reported  
355 questionnaires. Our findings should encourage public health officials and regulatory agencies to  
356 include the analysis of objective measures, in addition to self-reported questionnaires, as part of  
357 the evaluation of clinical trials. Though not available in the past, current digital wearable health  
358 technologies could offer simple platforms for obtaining physiological measures, adding invaluable  
359 objective, non-biased information. Thus, as part of the future process of vaccine approval, it is  
360 essential to combine objective and remote medical-grade monitors in clinical studies.

## 361 **Research in context**

### 362 **Evidence before this study**

363 Clinical trial guidelines for assessing the safety of vaccines, including the FDA criteria, are  
364 primarily based on subjective, self-reported questionnaires. Despite the tremendous technological  
365 advances in recent years, objective, continuous assessment of physiological measures post-  
366 vaccination is rarely performed. We conducted an extensive literature review from 5-17 December

367 2020 and aimed to include all relevant research with no language restrictions. We searched  
368 PubMed, Scopus, and Google Scholars for eligible studies using keywords such as “COVID-19  
369 vaccine”, “vaccine adverse effects”, “vaccine reactions”, “vaccine clinical trial”. We also checked  
370 the FDA guidelines and CE regulations regarding vaccine trails and approval.

371

### 372 **Added value of this study**

373 To our knowledge, this study is the first to account for objective, continuous assessment of  
374 physiological measures post-vaccination. Our approach revealed considerable changes in 13  
375 different measures following the BNT162b2 vaccine administration in both participants who  
376 reported and those who did not report local and systemic reactions. Moreover, within three days  
377 from vaccination, these measures returned to baseline levels in both groups, further supporting the  
378 vaccine's safety.

379

### 380 **Implications of all the available evidence**

381 Our findings should encourage public health officials and regulatory agencies to include the  
382 analysis of objective measures, in addition to self-reported questionnaires, as part of the evaluation  
383 of clinical trials. Though not available in the past, current digital wearable health technologies  
384 could offer simple platforms for obtaining physiological measures, adding invaluable objective,  
385 non-biased information. Thus, as part of the future process of vaccine approval, it is essential to  
386 combine objective and remote medical-grade monitors in clinical studies.

## 387 References

- 388 1 Draft landscape and tracker of COVID-19 candidate vaccines.  
389 <https://www.who.int/publications/m/item/draft-landscape-of-covid-19-candidate-vaccines>  
390 (accessed March 31, 2021).
- 391 2 Munitz A, Yechezkel M, Dickstein Y, Yamin D, Gerlic M. BNT162b2 vaccination effectively  
392 prevents the rapid rise of SARS-CoV-2 variant B.1.1.7 in high-risk populations in Israel. *Cell*  
393 *Reports Med* 2021; **0**: 100264.
- 394 3 Sharma O, Sultan AA, Ding H, Triggler CR. A Review of the Progress and Challenges of  
395 Developing a Vaccine for COVID-19. *Front Immunol* 2020; **11**: 585354.
- 396 4 Parker EPK, Shrotri M, Kampmann B. Keeping track of the SARS-CoV-2 vaccine pipeline. *Nat.*  
397 *Rev. Immunol.* 2020; **20**: 650.
- 398 5 Krammer F. SARS-CoV-2 vaccines in development. *Nature.* 2020; **586**: 516–27.
- 399 6 MHRA guidance on coronavirus (COVID-19) - GOV.UK.  
400 <https://www.gov.uk/government/collections/mhra-guidance-on-coronavirus-covid-19> (accessed  
401 March 31, 2021).
- 402 7 FDA Takes Key Action in Fight Against COVID-19 By Issuing Emergency Use Authorization for  
403 First COVID-19 Vaccine | FDA. [https://www.fda.gov/news-events/press-announcements/fda-](https://www.fda.gov/news-events/press-announcements/fda-takes-key-action-fight-against-covid-19-issuing-emergency-use-authorization-first-covid-19)  
404 [takes-key-action-fight-against-covid-19-issuing-emergency-use-authorization-first-covid-19](https://www.fda.gov/news-events/press-announcements/fda-takes-key-action-fight-against-covid-19-issuing-emergency-use-authorization-first-covid-19)  
405 (accessed March 31, 2021).
- 406 8 Polack FP, Thomas SJ, Kitchin N, *et al.* Safety and Efficacy of the BNT162b2 mRNA Covid-19  
407 Vaccine. *N Engl J Med* 2020; **383**: 2603–15.
- 408 9 Dagan N, Barda N, Kepten E, *et al.* BNT162b2 mRNA Covid-19 Vaccine in a Nationwide Mass  
409 Vaccination Setting. *N Engl J Med* 2021; : NEJMoa2101765.
- 410 10 Background document on mRNA vaccine BNT162b2 (Pfizer-BioNTech) against COVID-19.  
411 [https://www.who.int/publications/i/item/background-document-on-mrna-vaccine-bnt162b2-](https://www.who.int/publications/i/item/background-document-on-mrna-vaccine-bnt162b2-(pfizer-biontech)-against-covid-19)  
412 [\(pfizer-biontech\)-against-covid-19](https://www.who.int/publications/i/item/background-document-on-mrna-vaccine-bnt162b2-(pfizer-biontech)-against-covid-19) (accessed March 31, 2021).
- 413 11 Baden LR, El Sahly HM, Essink B, *et al.* Efficacy and Safety of the mRNA-1273 SARS-CoV-2  
414 Vaccine. *N Engl J Med* 2021; **384**: 403–16.
- 415 12 Voysey M, Clemens SAC, Madhi SA, *et al.* Safety and efficacy of the ChAdOx1 nCoV-19  
416 vaccine (AZD1222) against SARS-CoV-2: an interim analysis of four randomised controlled trials  
417 in Brazil, South Africa, and the UK. *Lancet* 2021; **397**: 99–111.
- 418 13 Mahase E. Covid-19: WHO says rollout of AstraZeneca vaccine should continue, as Europe  
419 divides over safety. *BMJ* 2021; **372**: n728.
- 420 14 Development and Licensure of Vaccines to Prevent COVID-19 | FDA.  
421 [https://www.fda.gov/regulatory-information/search-fda-guidance-documents/development-and-](https://www.fda.gov/regulatory-information/search-fda-guidance-documents/development-and-licensure-vaccines-prevent-covid-19)  
422 [licensure-vaccines-prevent-covid-19](https://www.fda.gov/regulatory-information/search-fda-guidance-documents/development-and-licensure-vaccines-prevent-covid-19) (accessed March 31, 2021).
- 423 15 Nachman D, Gepner Y, Goldstein N, *et al.* Comparing blood pressure measurements between a  
424 photoplethysmography-based and a standard cuff-based manometry device. *Sci Rep* 2020; **10**: 1–9.
- 425 16 Halberthal M, Nachman D, Eisenkraft A, Jaffe E. Hospital and home remote patient monitoring  
426 during the COVID-19 outbreak: A novel concept implemented. *Am J Disaster Med* 2020; **15**: 149–  
427 51.

428 17 Oved S, Mofaz M, Lan A, *et al.* Differential effects of COVID-19 lockdowns on well-being:  
429 interaction between age, gender and chronotype. 2021 DOI:10.21203/RS.3.RS-137929/V1.

430 18 Non-FDA. Vaccines and Related Biological Products Advisory Committee December 10, 2020  
431 Meeting Briefing Document- Sponsor. 2020.

432

### 433 **Financial Support**

434 This research was supported by the European Research Council (ERC) project #949850 and the  
435 Israel Science Foundation (ISF), grant No. 3409/19, within the Israel Precision Medicine  
436 Partnership program.

### 437 **Data Sharing**

438 Researchers interested in obtaining an aggregated version of the data sufficient to reproduce the  
439 results reported in this paper should contact the corresponding author. The study protocol is  
440 available at the appendix (pp 25-35). Statistical code will be available with publication.

### 441 **Authors' Contributions**

442 Conception and design: DY, ES, YG, Collection and assembly of data: MM, SO. Analysis and  
443 interpretation of the data: MM, SO, YG, ES, DY. Statistical expertise: DY, ES, MM, SO, MY.  
444 Drafting of the article: DY, ES, YG, MM, SO, MY, KC, NG. Critical revision of the article for  
445 important intellectual content: ES, DY, YG. Final approval of the article: All authors. Obtaining  
446 of funding: DY, ES.

447

### 448 **Disclosures**

449 All authors have disclosed no conflicts of interest.

450

451 **Supplementary Materials for: Short-term effects of BNT162b2**  
452 **mRNA COVID-19 vaccination on physiological measures: a**  
453 **prospective study**

454 **Table of Contents**

455	Appendix A: Study Protocol.....	25
456	Figure S1. Study scheme .....	28
457	Appendix B: Additional Results .....	36
458	Additional chest-patch indicators.....	36
459	Figure S2.....	36
460	Additional days for self-reported local and systemic reactions .....	37
461	Figure S3.....	38
462	Symptomatic vs. asymptomatic participants – additional chest-patch indicators .....	39
463	Figure S4.....	39
464	Gender groups differences in chest-patch indicators .....	41
465	Figure S5.....	41
466	Age groups differences in chest-patch indicators .....	42
467	Figure S6.....	43
468	Chest-patch indicators for first vaccine dose .....	44
469	Figure S7.....	44
470	References.....	45

471

472

473

474

475

476

477

478

479

480



481 **Appendix A: Study Protocol**

482

483 **Short-term effects of BNT162b2 mRNA COVID-19 vaccination on**  
484 **physiological measures**

485

486 **-Study protocol-**

487 (protocol approved by the Tel Aviv University Institutional Review Board: 0002522-1)

488 Authors: Yftach Gepner<sup>1,+</sup>, Merav Mofaz<sup>2</sup>, Shay Oved<sup>2</sup>, Matan Yechezkel<sup>2</sup>, Keren Constantini<sup>1</sup>, Nir  
489 Goldstein<sup>1</sup>, Erez Shmueli<sup>2,+</sup>, and Dan Yamin<sup>2,3,+\*</sup>

490 <sup>1</sup>Department of Epidemiology and Preventive Medicine, School of Public Health, Sackler Faculty of Medicine, and  
491 Sylvan Adams Sports Institute, Tel-Aviv University, Tel-Aviv, Israel

492 <sup>2</sup>Department of Industrial Engineering, Tel-Aviv University, Tel-Aviv, Israel

493 <sup>3</sup>Center for Combatting Pandemics, Tel-Aviv University, Tel-Aviv, Israel

494 <sup>+</sup>Equal contribution

495 <sup>\*</sup>Corresponding author: dan.yamin@gmail.com

496 **Primary funding: the European Research Council (ERC) project #949850**

497 **Ethical Approval: Tel-Aviv University Institutional Review Board (0002522-1)**

498 **December, 2020**

499 **Background**

500 Vaccination is widely accepted as the most prominent measure in the fight against COVID-19, posing the  
501 greatest hope for ending this major global health pandemic and related economic crisis.<sup>1</sup> Consequently, an  
502 unprecedented international effort by private and public institutions alike was directed at accelerating the  
503 traditionally lengthy vaccine-development process.<sup>2-4</sup>

504  
505 On 2 December 2020, less than a year from the pandemic outbreak, the first vaccine, BNT162b2 mRNA  
506 (Pfizer-BioNTech), was granted an Emergency Use Authorization (EUA) by the UK Medicines and  
507 Healthcare products Regulatory Agency (MHRA).<sup>5</sup> This initial authorization was followed by rapid  
508 authorizations for emergency use in several countries, with the US Food and Drug Administration (FDA)  
509 among the first to do so.<sup>6</sup>

510  
511 Safety data from a randomized controlled trial suggests a favorable safety profile for the BNT162b2  
512 vaccine.<sup>7</sup> Specifically, the local and systemic self-reported reactions during the first seven days after  
513 vaccination were mainly mild to moderate, with a median onset of 0–2 days after vaccine administration  
514 and a median duration of 1–2 days. The most frequently reported reactions were fatigue, headache, muscle  
515 pain, chills, joint pain, and fever.<sup>7</sup> The incidence of serious adverse events was low and was similar between  
516 vaccine- and placebo-treated participants. The safety of the new vaccine over a median of two months post-  
517 vaccination was similar to that of other viral vaccines. A considerable fraction of the participants did not  
518 report any reaction or adverse event. Likewise, several other vaccine candidates, including ChAdOx1  
519 nCoV-19 (Oxford/AstraZeneca) and mRNA-1273 (Moderna), received EUAs following similar  
520 encouraging safety results by randomized controlled trials.<sup>8-10</sup>

521 Nevertheless, concerns regarding potential adverse effects from vaccines have recently led to the  
522 suspension of the ChAdOx1 nCoV-19 vaccination campaigns in Europe.<sup>11</sup> They may have reinforced the

523 public hesitancy towards COVID-19 vaccines. These concerns underscore the importance of extracting as  
524 much information as possible from clinical trials.

525 The World Health Organization (WHO) has defined vaccine hesitancy as one of the 10 major health threats  
526 worldwide.<sup>12</sup> However, clinical trial guidelines for assessing the safety of vaccines, including the FDA  
527 criteria,<sup>13</sup> are primarily rely on subjective, self-reported questionnaires. Despite the tremendous  
528 technological advances in recent years, objective, continuous assessment of physiological measures post-  
529 vaccination is rarely performed.

530 This short-term prospective clinical study aims to document symptoms among COVID-19 vaccinated  
531 subjects and cross it with physiological signs derived from continuous remote monitoring before, during,  
532 and after receiving the vaccine, looking at any potential hidden layers of the safety of the vaccine.

533

## 534 **Methods**

### 535 *Study Design*

536 This prospective observational study will be conducted during the mass-vaccination campaign expected to  
537 be implemented in Israel in early 2021. The study design is outlined in Figure S1. Participants will be  
538 equipped with a chest-patch sensor and will be monitored for four days, starting one day before vaccination.  
539 In addition, participants will install a dedicated mobile application and will be requested to fill a daily  
540 questionnaire, starting one day before the inoculation, for 15 days. For each participant, the 24-hour period  
541 prior to vaccination will be served as the baseline period.

542

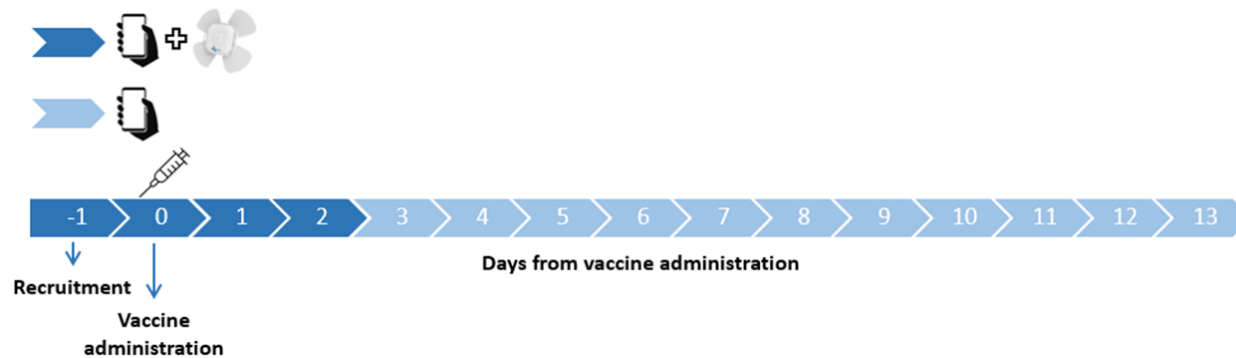


Figure S1. Study scheme

543

#### 544 *Participants*

545 Up to 200 participants will be recruited for the study, all before receiving the BNT162b2 mRNA COVID-  
546 19 vaccine. Inclusion criteria will include those aged > 18 years who were eligible to receive the vaccine.  
547 Individuals who are not eligible to give and sign a consent form of their free will or those previously  
548 diagnosed with COVID-19 will be excluded. To recruit participants and ensure they complete all the study's  
549 requirements, we will hire a professional survey company. Potential participants will be recruited through  
550 advertisements in social media, online banners, and word-of-mouth. The survey company is responsible for  
551 guaranteeing the participants meet the study's requirements, in particular, that they agree to wear the chest-  
552 patch sensor and fill in the daily questionnaires.

#### 553 *Study procedures*

554 Several days before receiving the vaccine, a study investigator personally meets with each participant to  
555 explain the study procedure. Before participation in the study, all participants will be advised orally and in  
556 writing about the nature of the experiments and give written, informed consent. At this time, participants  
557 will be asked to complete enrollment questionnaire that includes demographic information and health  
558 status. In addition, participants will be asked to install two applications on their mobile phones: an  
559 application that passively collects data from the chest-patch sensor and the PerMed application, which  
560 allows participants to fill in the daily questionnaires. Participants will be given instructions regarding the

561 self-reported symptoms questionnaires and how to operate the wireless chest-patch sensor, which they will  
562 wear for four consecutive days, starting 24 hours prior to receiving the vaccine.

### 563 *Enrollment questionnaire*

564 As mentioned, all the participants filled a one time enrollment questionnaire that includes demographic  
565 questions and questions about the participant's health condition in general. The questionnaire we will use  
566 includes the following: age, gender, height, weight, household size and comorbidities. Other questions such  
567 as name, address, phone and email were included as well and were used by the survey company in order to  
568 contact the participants. The answers were inserted by the study investigator to the study's secured  
569 dashboard.

### 570 *Monitoring device*

571 Starting 24 hours prior to receiving the vaccine, participants will wear a chest-patch sensor attached,  
572 continuously measuring 13 physiological parameters: heart rate, blood oxygen saturation, respiratory rate,  
573 systolic and diastolic blood pressure, pulse pressure, mean arterial pressure, heart rate variability, stroke  
574 volume, cardiac output, cardiac index, systemic vascular resistance, and body temperature. Participants will  
575 wear the monitoring sensor for three days following the vaccine.

576 The photoplethysmography (PPG)-based chest monitors (Biobeat Technologies Ltd) that will be purchased  
577 and used in this study has FDA clearance (clearance number K190792) and CE Mark approval (CE 2797).  
578 The sensor tracks vital signs derived from changes in the pulse contour, following baseline calibration using  
579 an approved non-invasive, cuff-based device, and is based on Pulse Wave Transit Time (PWTT)  
580 technology, combined with Pulse Wave Analysis (PWA). The sensor will continuously collect data at 10-  
581 minute intervals for the entire duration of the 96-hour experiment.

### 582 *Daily questionnaires*

583 All participants will complete the daily self-reported questionnaire in a dedicated application (the PerMed  
584 mobile application). The daily questionnaire we will use includes the following questions:

585 How is your mood today? • Awful (-2)• Bad (-1)• OK (0)• Good (1)• Excellent (2)

586

587 How would you describe the level of your stress during the last day?• Very Low (-2)• Low (-1)•

588 Medium (0)• High (1)• Very high (2)

589

590 How would you define your last night sleep quality?• Awful (-2)• Bad (-1)• OK (0)• Good (1)•

591 Excellent (2)

592

593 Try to remember how many minutes of sports activity you performed on the last day?

594

595 Have you experienced one or more of the following symptoms in the last 24 hours?• My general

596 feeling is good, and I have no symptoms• Heat measured above 37.5• Cough• Sore throat• Runny

597 nose• Headache• Shortness of breath• Muscle aches• Weakness / fatigue• Diarrhea• Nausea /

598 vomiting• Chills• Confusion• Loss of sense of taste / smell• Another symptom

599

600

601

602

603

604

605

606

607

608 ***Data Storage***

609 The data will be exported securely through the MD Clone secure data platform or a secured locked database  
610 only after receipt of consent forms from participants. Data from the mobile phone application of the  
611 prospective study population will be stored on a secure server within Tel Aviv University facilities. The  
612 server (bdl7.eng.tau.ac.il) runs a CentOS operating system and is located in Software Engineering Building  
613 at Tel Aviv University. This server is protected behind the university's firewall and is not connected to  
614 external networks. In addition, a secure connection through an SSL protocol and a trusted certificate will  
615 be obtained for the transfer of information from the mobile phone application into the secured server.

616 Access will be restricted to investigators in the study. The information from the mobile application will be  
617 stored in a structured manner on the secured server without any explicitly identifying information (name,  
618 ID number, email). Each participant will be assigned a coded participant number that will be used to identify  
619 the subject in the database. The code with the identified information will be stored in an encrypted form on  
620 a separate secured server that only the research manager will have access to. Access to all servers is  
621 restricted with username and password.

622 All (non-digital) questionnaires and signed informed consent documents will be stored in a secured cabinet  
623 in Tel Aviv University, to which only the research manager and the principal investigators will have access.

624 No data collected as part of the study will be added to individuals' medical charts.

625 All signed informed consent and printed questionnaires will be stored in a secured cabinet at Tel Aviv  
626 University with restricted access. Only the PIs will have access to this cabinet.

627 All individual clinical test results that are generated as part of this study will be shared with participants as  
628 explained above.

629

630

631 ***Data processing***

632 We will perform several preprocessing steps. Concerning the daily questionnaires, in cases where  
633 participants will fill in the daily questionnaire more than once on a given day, only the last entry for that  
634 day will be considered, as it is reasoned that the last one likely best represented the entire day. Self-reported  
635 symptoms that are entered as the free text will be manually categorized. Concerning the chest-patch  
636 indicators, data will first be aggregated per hour (by taking the mean value). Then, to impute missing values,  
637 we will perform a linear interpolation.

638

639 ***Data Analysis***

640 We will examine the changes in each chest-patch indicator over the 72 hours post-vaccination compared  
641 with the 24-hour baseline period prior to vaccination. To do so, we will perform the following steps. For  
642 each indicator, for each hour  $h$  of the 72 hours post-vaccination, we will calculate for each individual the  
643 mean value in the five-hour sliding window:  $[h - 4, h - 3, h - 2, h - 1, h]$ . Then, we will calculate the  
644 relative change in the percentage of this value compared to the corresponding five-hour window in the  
645 baseline period. Finally, we will calculate the mean value for hour  $h$  over all 160 participants, as well as  
646 the 90% confidence interval, corresponding to a significance level of 0.05 in a one-sided t-test.

647

648 We will also examine the changes in the daily questionnaire. For each of the three days after the vaccination,  
649 we will calculate the percentage of participants who reported new local or systemic reactions compared to  
650 their baseline period. For each reaction, a 90% confidence interval will be calculated assuming a beta  
651 distribution, with parameter  $\alpha$  corresponding to the number of participants reporting that reaction plus one  
652 (i.e., “successes”), and parameter  $\beta$  corresponding to the number of participants who did not report that  
653 reaction plus one (i.e., “failures”). Similarly, we will calculate the changes in the well-being indicators  
654 reported post-vaccination compared to those reported in the baseline period. Specifically, we will calculate



655 the difference between the value in each day and the corresponding value in the baseline period for each  
656 indicator. Then, we will calculate the mean difference value over all participants and a 90% confidence  
657 interval using a t distribution.

658

659 Finally, we will examine the difference between symptomatic and asymptomatic participants with regard  
660 to changes in the chest-patch indicators, stratified by the number of days post-vaccination (1-3) and part of  
661 the day (day or night). For a given day post-vaccination, symptomatic participants will be defined as those  
662 who reported at least one reaction on that day that they did not report in the baseline period. Asymptomatic  
663 individuals will be defined as those who reported no reactions on that day. We will define nighttime and  
664 daytime based on the observed movement patterns of the participants throughout the study. For each  
665 participant, we will calculate the mean indicator value for each day and part of the day post-vaccination.  
666 Then, we will calculate the relative change in percentages of these values compared to their corresponding  
667 values in the baseline period. Next, we will calculate the mean values of symptomatic participants and  
668 asymptomatic participants and their corresponding 90% confidence intervals using a t distribution. Finally,  
669 unequal variances t-tests will be used to evaluate the differences between symptomatic and asymptomatic  
670 participants.

671

672

673

674

675

676

677

678 ***Potential Risks & Risk management***

679 No potential risks arising from the sensors are expected, as the device is already commercialized with no  
680 known adverse reactions. Following the instructions for use, people with known allergies to metals (e.g.,  
681 zinc, tin) will not be included in the study.

682

683

684 ***Benefits***

685 The sensor used in this study will provide continuous blood pressure data for each participant. After  
686 completion of the study, all participants will receive a detailed report containing information regarding their  
687 fluctuations in blood pressure during the baseline monitoring period (i.e., 24 hours prior to receiving the  
688 vaccine), with a recommendation to share it with their general practitioner.

689

690

691

692

693

694

695

696

697

698

699

700 ***Privacy/Confidentiality***

701 Results from this study will be handled as grouped data. Individual results will remain confidential and will  
702 not be published or shared with any third party. Signed and dated informed consent forms, as well as data  
703 recording sheets (e.g., case report forms) will be stored in locked cabinets during the study and following  
704 its completion. A file containing the personal details of the participants will be coded to help preserve  
705 confidentiality and separated from all other data collected throughout the study. This file will be kept by  
706 the principal investigator. Data will be stored on computers in password-protected files.

707 The data obtained from the sensor used in this study will be anonymous and coded. The sensor does not  
708 include a GPS, as required from any medical-grade monitoring device. The data collected by the PerMed  
709 application arrive to PerMed back-end servers and are stored securely.

710

711

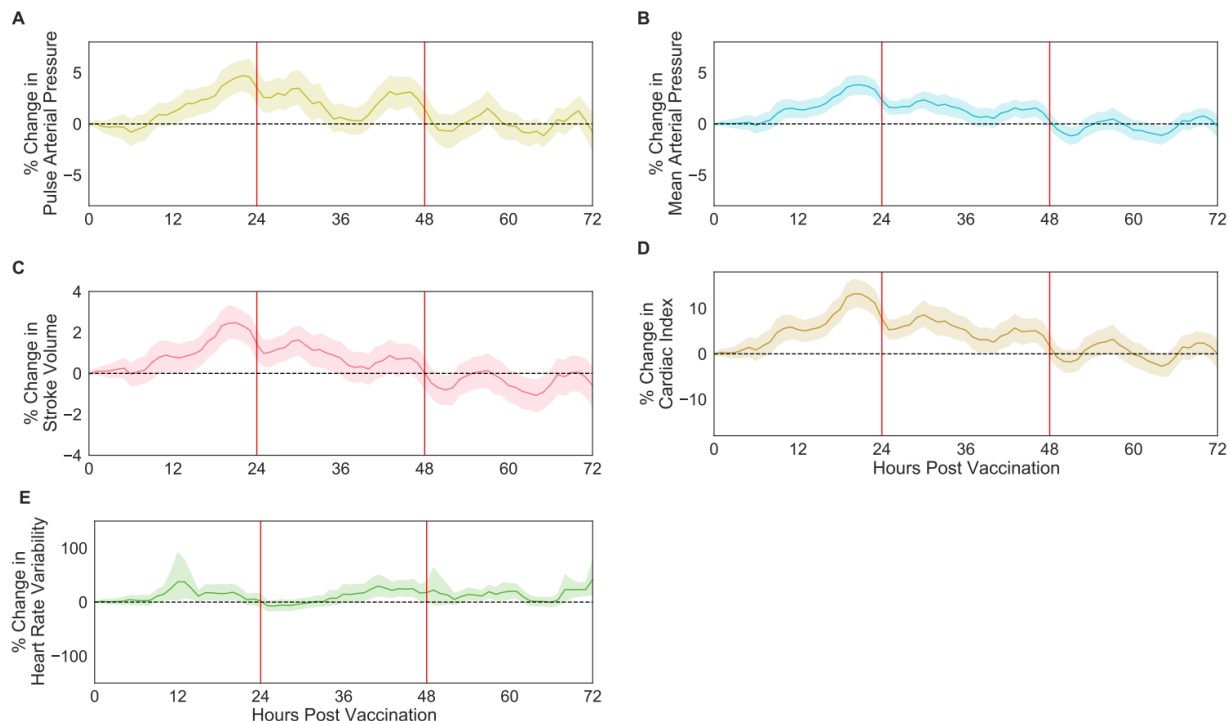
712 **Appendix B: Additional Results**

713

714 **Additional chest-patch indicators**

715 Within the first 48 hours post-vaccination, we identified significant changes in nearly all chest-patch physiological  
716 measures compared to their baseline levels (Figure 1 in the main text and Figure S2). Following the initial 48 hours,  
717 these changes faded, with measurements returning to their baseline levels.

718



719

720 **Figure S2.** Percentage of change in respiratory, cardiovascular, and physiological chest-patch indicators recorded by the chest-  
721 patch sensor, compared to their baseline levels: (A) pulse arterial pressure, (B) mean arterial pressure, (C) stroke volume, (D)  
722 cardiac index, (E) heart rate variability. Mean values are depicted as solid lines, 90% confidence intervals are presented as  
723 shaded regions, and horizontal dashed lines represent no change compared to the baseline levels.

724

725

726

727 **Additional days for self-reported local and systemic reactions**

728 We observe a sharp decline in reported local and systemic reactions following three days post-vaccination and

729 nearly a complete halt within 14 days post-vaccination (Figure 2 in the main text and Figure S3). Fatigue and

730 headache were the most frequent reactions reported and lasted longer than the other reported reactions.

731

732

733

734

735

736

737

738

739

740

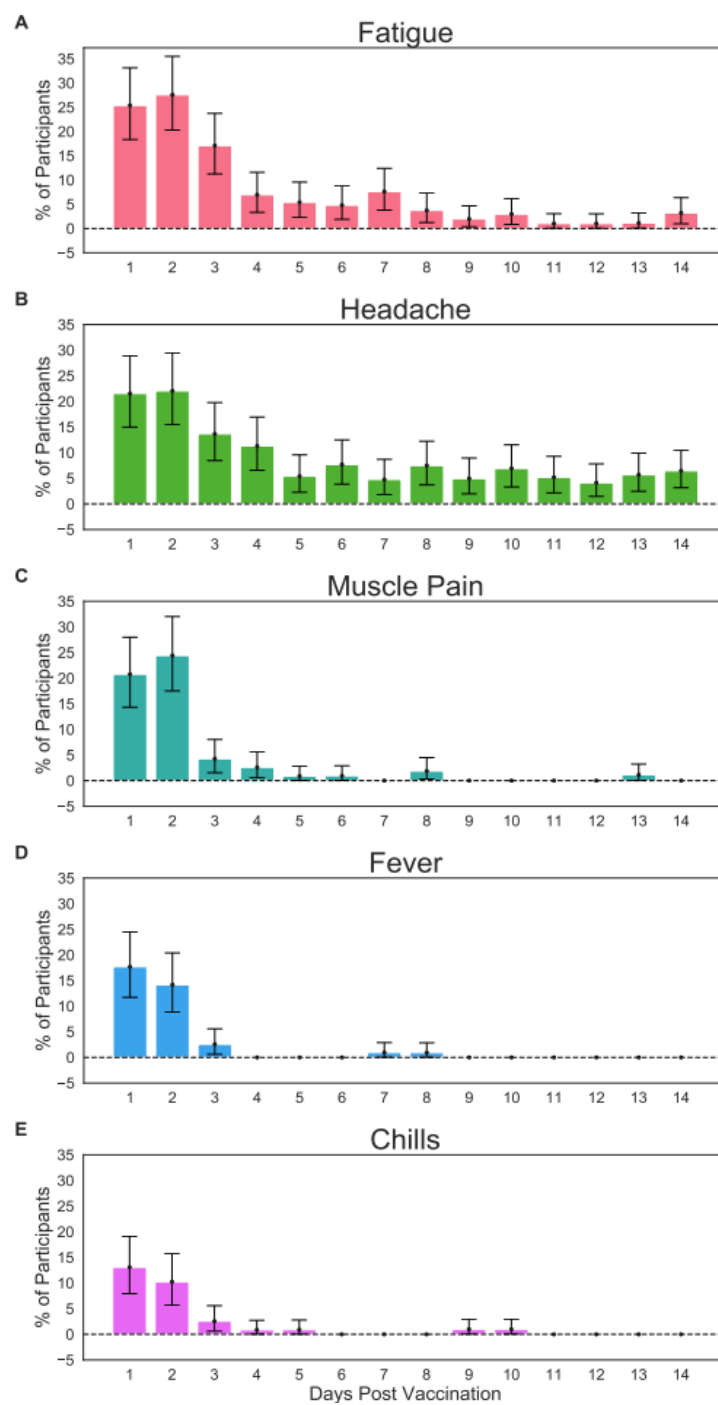
741

742

743

744

745

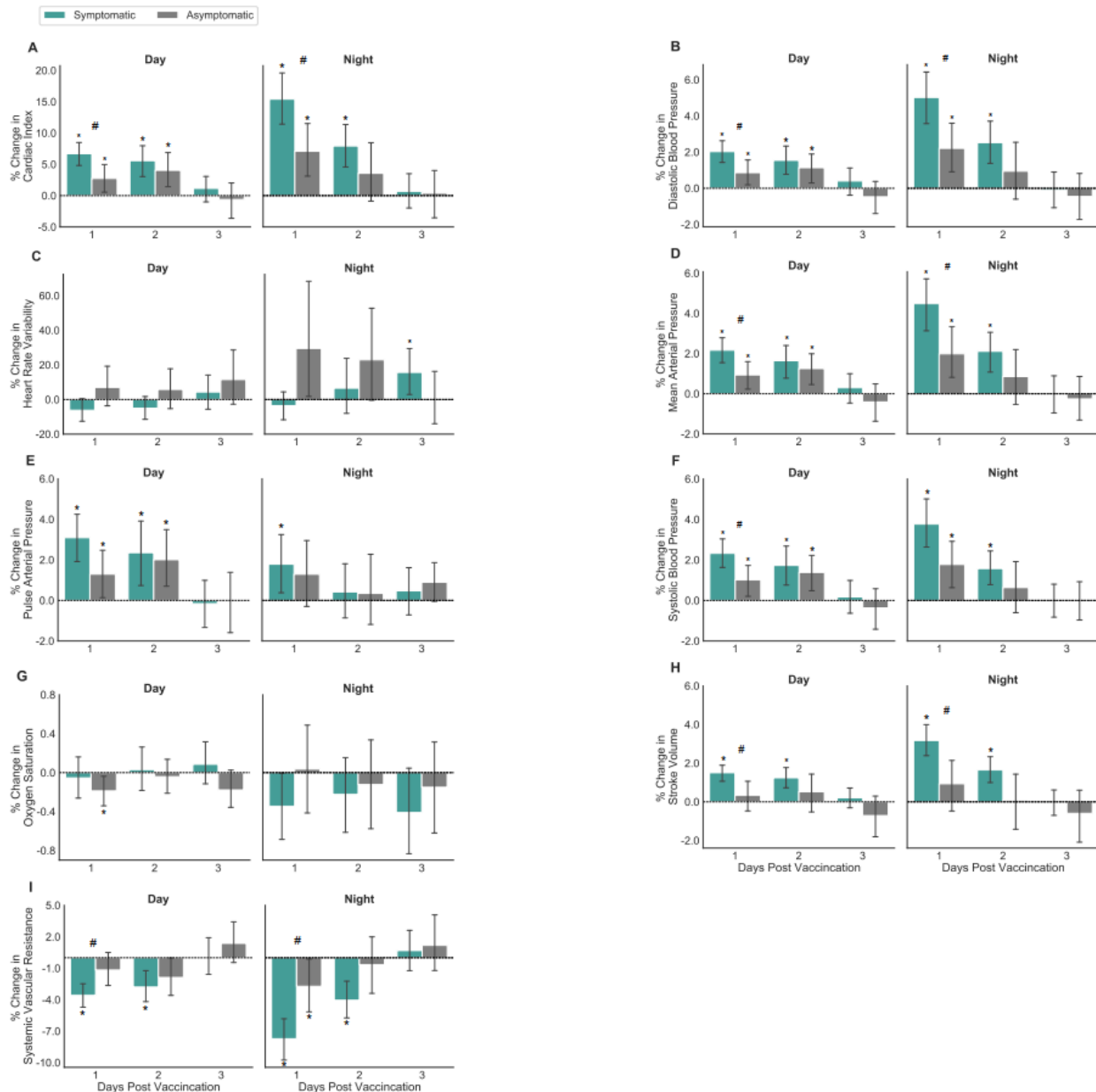


746 **Figure S3.** Most frequent local and systemic reactions reported by participants through the mobile application. (A) fatigue,  
747 (B) headache, (C) muscle pain, (D) fever, and (E) chills. Error bars represent 90% confidence intervals. Horizontal dashed  
748 lines represent no change compared to the baseline levels.

749

750 **Symptomatic vs. asymptomatic participants – additional chest-patch indicators**

751 During the daytime of the first two days post-vaccination, nearly all chest-patch indicators significantly changed  
 752 not only for symptomatic participants but also for asymptomatic participants (Figure 3 in the main text and Figure  
 753 S4). Moreover, the changes observed for symptomatic participants were found to be significantly higher than those  
 754 of asymptomatic individuals in most chest-patch indicators during the first day and the first night post-vaccination.



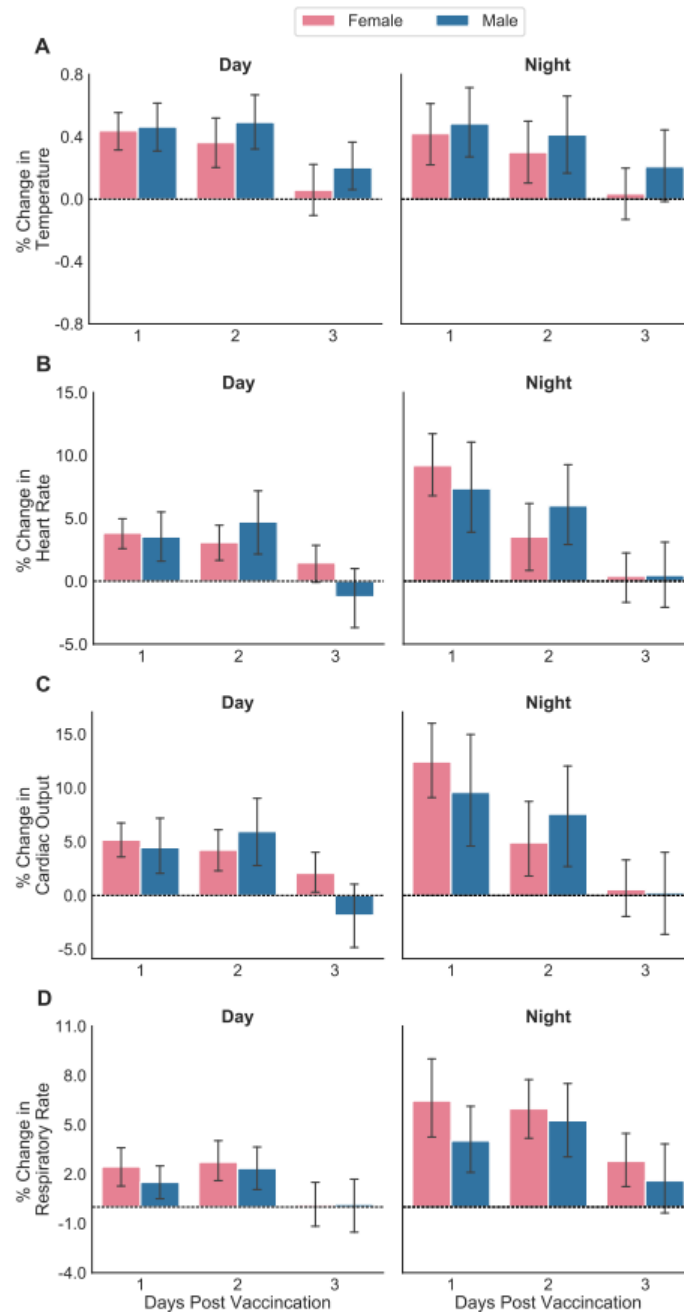
755 **Figure S4.** Percentage of change in chest-patch indicators for participants who reported at least one local or systemic reaction  
 756 (symptomatic) and those who reported no reaction (asymptomatic), during days and nights: (A) cardiac index, (B) diastolic  
 757 blood pressure, (C) heart rate variability, (D) mean arterial pressure, (E) pulse arterial pressure, (F) systolic blood pressure,  
 758 (G) oxygen saturation, (H) stroke volume, and (I) systemic vascular resistance. Error bars represent 90% confidence intervals.

759 Horizontal dashed lines represent no change compared to the baseline levels. Significant differences from baseline at a 0.05  
760 level are marked with \*. Significant differences between symptomatic and asymptomatic participants at a 0.05 level are marked  
761 with #.  
762



763 **Gender groups differences in chest-patch indicators**

764 During the daytime and nighttime of the first two days post-vaccination, all four chest-patch indicators significantly  
765 changed for both males and females (Figure S5). There was no significant change between the two genders.

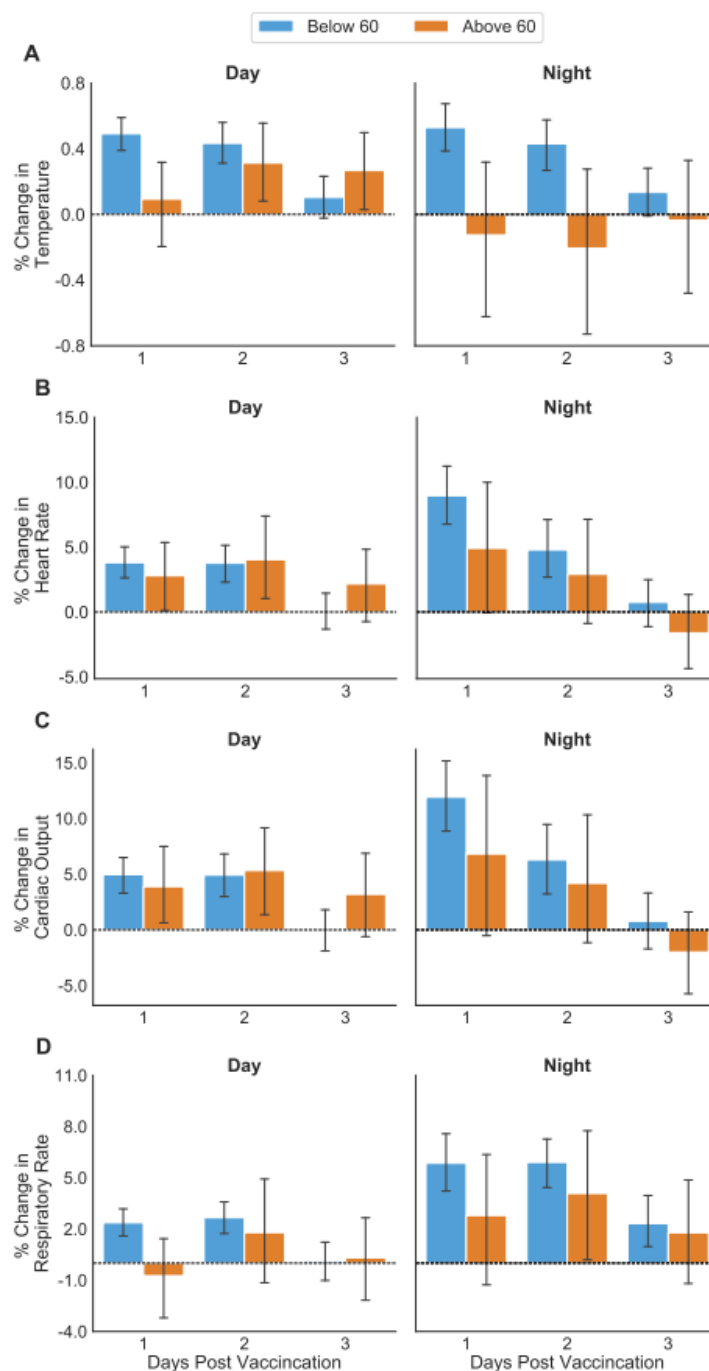


766 **Figure S5.** Percentage of change in chest-patch indicators for participants divided by gender during the daytime and the  
767 nighttime: (A) body temperature, (B) heart rate, (C) cardiac output, and (D) respiratory rate. Error bars represent 90%  
768 confidence intervals. Horizontal dashed lines represent no change compared to the baseline levels.

769 **Age groups differences in chest-patch indicators**

770 During the daytime and nighttime of the first two days post-vaccination, all four chest-patch indicators significantly

771 changed for the younger age group but not necessary for the older group (Figure S6).



772

773 **Figure S6.** Percentage of change in chest-patch indicators for participants divided by age group during the daytime and the  
774 nighttime: (A) body temperature, (B) heart rate, (C) cardiac output, and (D) respiratory rate. Error bars represent 90%  
775 confidence intervals. Horizontal dashed lines represent no change compared to the baseline levels.

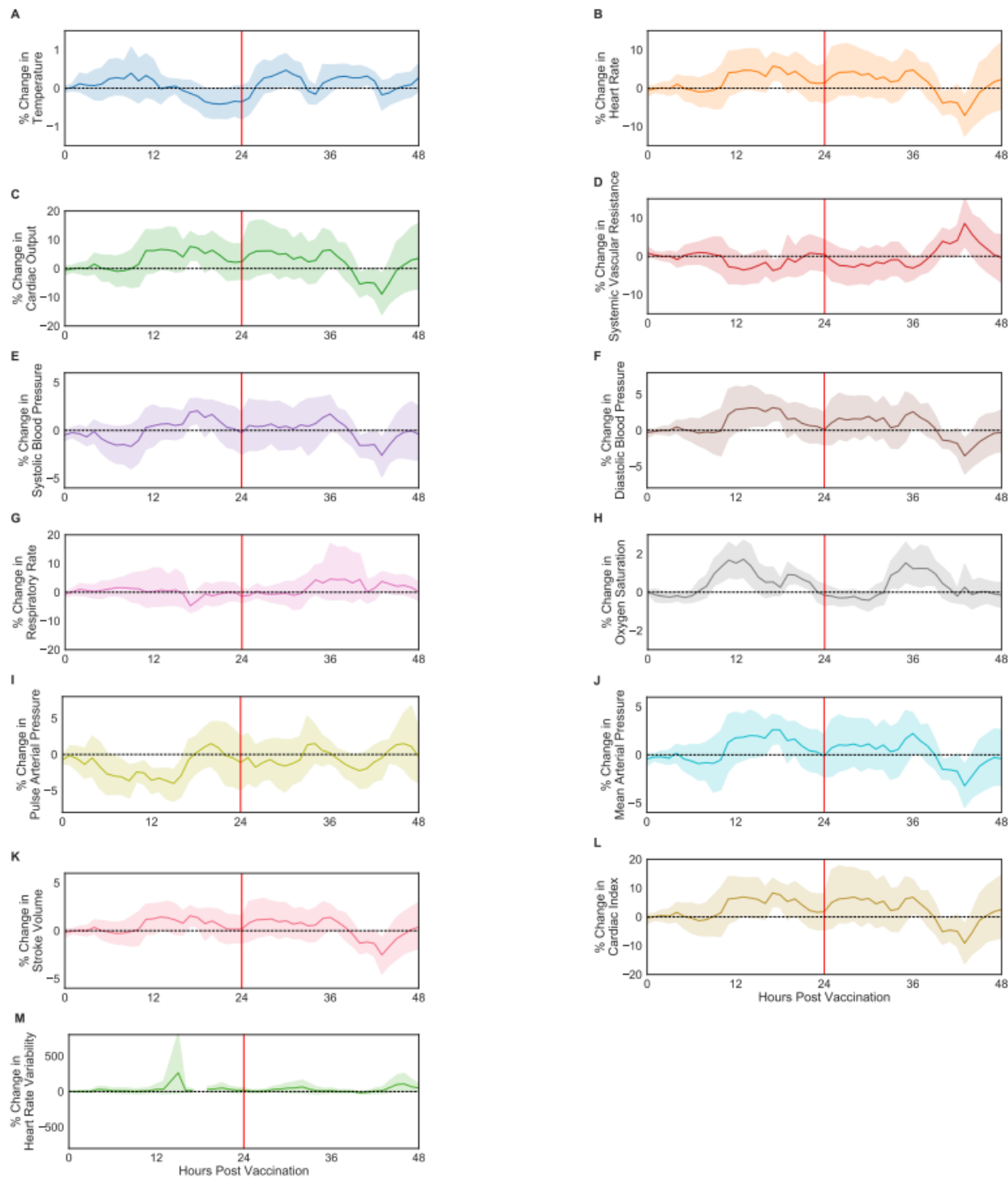
776

777

778 **Chest-patch indicators for first vaccine dose**

779 In contrast to the second vaccine dose, examining the participants who were monitored when receiving their first

780 vaccine dose revealed no difference in vitals during the first 48 hours post-inoculation.



781 **Figure S7.** Percentage of change in respiratory, cardiovascular, and physiological indicators recorded by the chest-patch sensor

782 compared to their baseline levels: (A) body temperature, (B) heart rate, (C) cardiac output, (D) systemic vascular resistance,

783 (E) systolic blood pressure, (F) diastolic blood pressure, (G) respiratory rate, (H) oxygen saturation, (I) pulse arterial pressure,  
784 (J) mean arterial pressure, (K) stroke volume, (L) cardiac index, and (M) heart rate variability. Mean values are depicted as  
785 solid lines, 90% confidence intervals are presented as shaded regions, and horizontal dashed lines represent no change  
786 compared to the baseline levels.

## 787 **References**

- 788 1 Draft landscape and tracker of COVID-19 candidate vaccines.  
789 <https://www.who.int/publications/m/item/draft-landscape-of-covid-19-candidate-vaccines> (accessed  
790 March 31, 2021).
- 791 2 Sharma O, Sultan AA, Ding H, Triggler CR. A Review of the Progress and Challenges of Developing a  
792 Vaccine for COVID-19. *Front Immunol* 2020; **11**: 585354.
- 793 3 Parker EPK, Shrotri M, Kampmann B. Keeping track of the SARS-CoV-2 vaccine pipeline. *Nat. Rev.*  
794 *Immunol.* 2020; **20**: 650.
- 795 4 Krammer F. SARS-CoV-2 vaccines in development. *Nature.* 2020; **586**: 516–27.
- 796 5 MHRA guidance on coronavirus (COVID-19) - GOV.UK.  
797 <https://www.gov.uk/government/collections/mhra-guidance-on-coronavirus-covid-19> (accessed March 31,  
798 2021).
- 799 6 FDA Takes Key Action in Fight Against COVID-19 By Issuing Emergency Use Authorization for First  
800 COVID-19 Vaccine | FDA. [https://www.fda.gov/news-events/press-announcements/fda-takes-key-action-](https://www.fda.gov/news-events/press-announcements/fda-takes-key-action-fight-against-covid-19-issuing-emergency-use-authorization-first-covid-19)  
801 [fight-against-covid-19-issuing-emergency-use-authorization-first-covid-19](https://www.fda.gov/news-events/press-announcements/fda-takes-key-action-fight-against-covid-19-issuing-emergency-use-authorization-first-covid-19) (accessed March 31, 2021).
- 802 7 Polack FP, Thomas SJ, Kitchin N, *et al.* Safety and Efficacy of the BNT162b2 mRNA Covid-19 Vaccine.  
803 *N Engl J Med* 2020; **383**: 2603–15.
- 804 8 Background document on mRNA vaccine BNT162b2 (Pfizer-BioNTech) against COVID-19.  
805 [https://www.who.int/publications/i/item/background-document-on-mrna-vaccine-bnt162b2-\(pfizer-](https://www.who.int/publications/i/item/background-document-on-mrna-vaccine-bnt162b2-(pfizer-biontech)-against-covid-19)  
806 [biontech\)-against-covid-19](https://www.who.int/publications/i/item/background-document-on-mrna-vaccine-bnt162b2-(pfizer-biontech)-against-covid-19) (accessed March 31, 2021).
- 807 9 Baden LR, El Sahly HM, Essink B, *et al.* Efficacy and Safety of the mRNA-1273 SARS-CoV-2 Vaccine.  
808 *N Engl J Med* 2021; **384**: 403–16.
- 809 10 Voysey M, Clemens SAC, Madhi SA, *et al.* Safety and efficacy of the ChAdOx1 nCoV-19 vaccine  
810 (AZD1222) against SARS-CoV-2: an interim analysis of four randomised controlled trials in Brazil,  
811 South Africa, and the UK. *Lancet* 2021; **397**: 99–111.
- 812 11 Mahase E. Covid-19: WHO says rollout of AstraZeneca vaccine should continue, as Europe divides over  
813 safety. *BMJ* 2021; **372**: n728.
- 814 12 Ten threats to global health in 2019. [https://www.who.int/news-room/spotlight/ten-threats-to-global-](https://www.who.int/news-room/spotlight/ten-threats-to-global-health-in-2019)  
815 [health-in-2019](https://www.who.int/news-room/spotlight/ten-threats-to-global-health-in-2019) (accessed May 2, 2021).
- 816 13 Development and Licensure of Vaccines to Prevent COVID-19 | FDA. [https://www.fda.gov/regulatory-](https://www.fda.gov/regulatory-information/search-fda-guidance-documents/development-and-licensure-vaccines-prevent-covid-19)  
817 [information/search-fda-guidance-documents/development-and-licensure-vaccines-prevent-covid-19](https://www.fda.gov/regulatory-information/search-fda-guidance-documents/development-and-licensure-vaccines-prevent-covid-19)  
818 (accessed March 31, 2021).

819

820