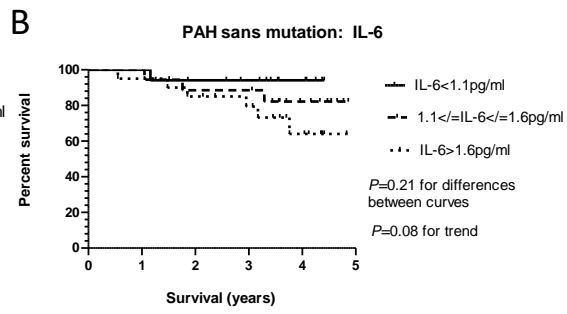
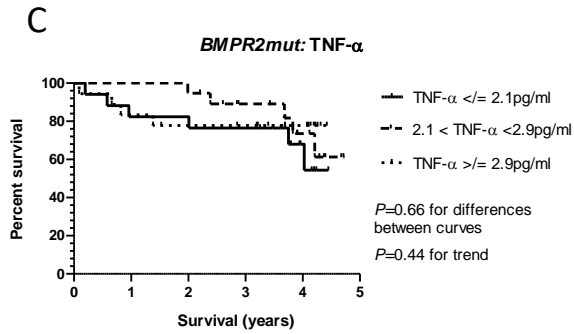


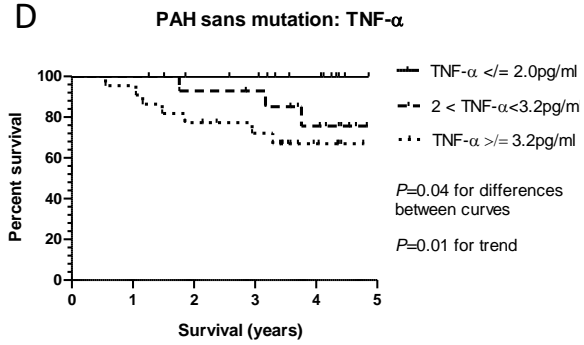
Patients at risk	0yrs	1yr	2yrs	3yrs	4yrs
BMPR2mut: IL-6 < 1.2 pg/ml	18	18	18	16	11
BMPR2mut: 1.2 <= IL-6 < 2.0 pg/ml	18	18	17	14	08
BMPR2mut: IL-6 >= 2.0 pg/ml	18	15	13	11	04



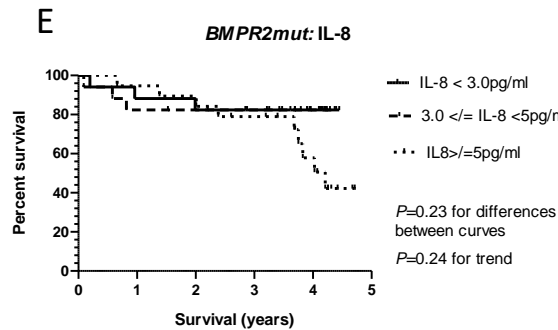
Patients at risk	0yrs	1yr	2yrs	3yrs	4yrs
PAH sans mutation: IL-6 < 1.2 pg/ml	17	17	15	13	08
PAH sans mutation: 1.2 <= IL-6 < 2.0 pg/ml	18	18	16	16	09
PAH sans mutation: IL-6 >= 2.0 pg/ml	20	20	18	16	08



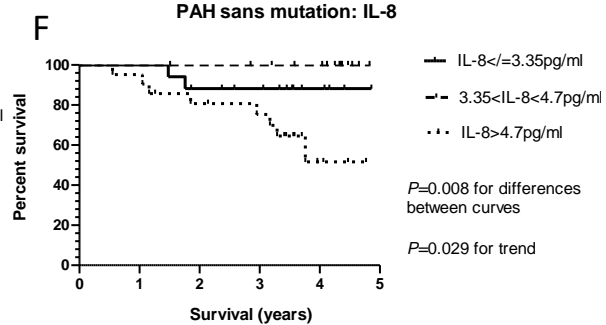
Patients at risk	0yrs	1yr	2yrs	3yrs	4yrs
BMPR2mut: TNF- α <= 2.1pg/ml	17	15	15	14	06
BMPR2mut: 2.1 < TNF- α < 2.9pg/ml	19	19	19	14	08
BMPR2mut: TNF- α > 2.9 pg/ml	18	16	14	13	09



Patients at risk	0yrs	1yr	2yrs	3yrs	4yrs
PAH sans mutation: TNF- α <= 2.1pg/ml	17	17	16	15	11
PAH sans mutation: 2.1 < TNF- α < 2.9pg/ml	15	15	14	13	09
PAH sans mutation: TNF- α > 2.9 pg/ml	22	22	18	15	06



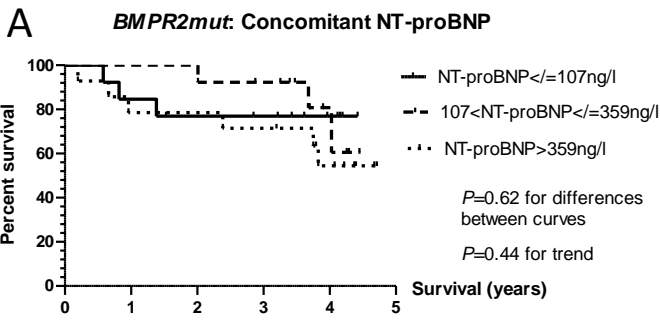
Patients at risk	0yrs	1yr	2yrs	3yrs	4yrs
BMPR2mut: IL-8 < 3.0 pg/ml	17	16	15	12	05
BMPR2mut: 3.0 <= IL-8 < 5.0 pg/ml	17	15	14	13	09
BMPR2mut: IL-8 >= 5.0 pg/ml	19	19	18	15	09



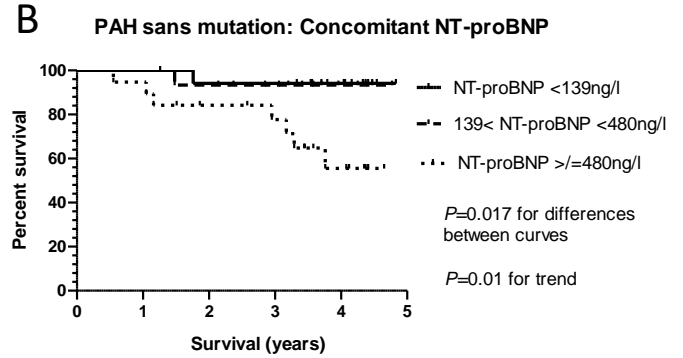
Patients at risk	0yrs	1yr	2yrs	3yrs	4yrs
PAH sans mutation: IL-8 < 3.0 pg/ml	17	17	15	13	07
PAH sans mutation: 3.0 <= IL-8 < 5.0 pg/ml	16	16	16	15	13
PAH sans mutation: IL-8 >= 5.0 pg/ml	21	21	17	15	04

Supplementary Figure 1

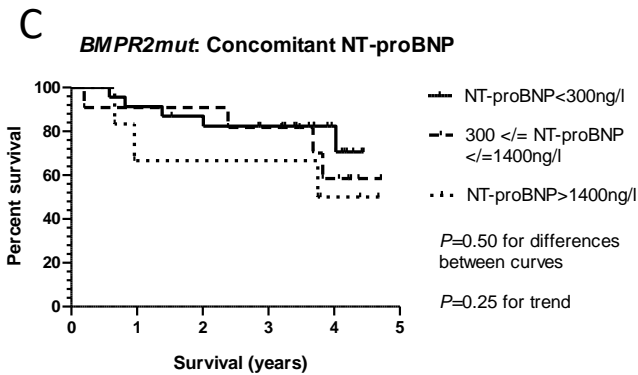
Kaplan-Meier analyses based on cytokine values. Graphs (A-B) show Kaplan-Meier curves based on tertiles of IL-6 values derived from the current cohort of *BMPR2mut* (A) and PAH sans mutation (B) patients. Graphs (C-D) show Kaplan-Meier curves based on tertiles of TNF- α values derived from the current cohort of *BMPR2mut* (C) and PAH sans mutation (D) patients. Graphs (E-F) show Kaplan-Meier curves based on tertiles of IL-8 values derived from the current cohort of *BMPR2mut* (E) and PAH sans mutation (F) patients.



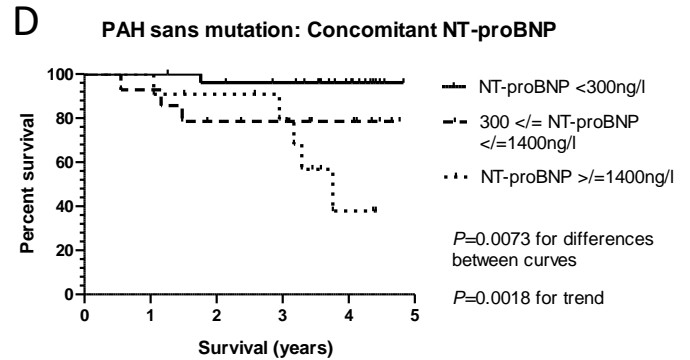
Patients at risk	0yrs	1yr	2yrs	3yrs	4yrs
<i>BMPR2mut</i> : NT-proBNP ≤ 107 ng/l	13	12	10	9	5
<i>BMPR2mut</i> : 107 < NT-proBNP ≤ 359 ng/l	13	13	13	12	5
<i>BMPR2mut</i> : NT-proBNP > 359 ng/l	14	13	12	11	7



Patients at risk	0yrs	1yr	2yrs	3yrs	4yrs
PAH sans mutation: NT-proBNP < 139ng/l	17	17	17	17	10
PAH sans mutation: 139 < NT-proBNP < 480ng/l	16	16	15	12	6
PAH sans mutation: NT-proBNP ≥ 480 ng/l	19	19	16	13	7



Patients at risk	0yrs	1yr	2yrs	3yrs	4yrs
<i>BMPR2mut</i> : NT-proBNP < 300ng/l	23	22	20	17	8
<i>BMPR2mut</i> : 300 < NT-proBNP ≤ 1400 ng/l	11	11	11	10	6
<i>BMPR2mut</i> : NT-proBNP > 1400ng/l	6	5	5	5	3



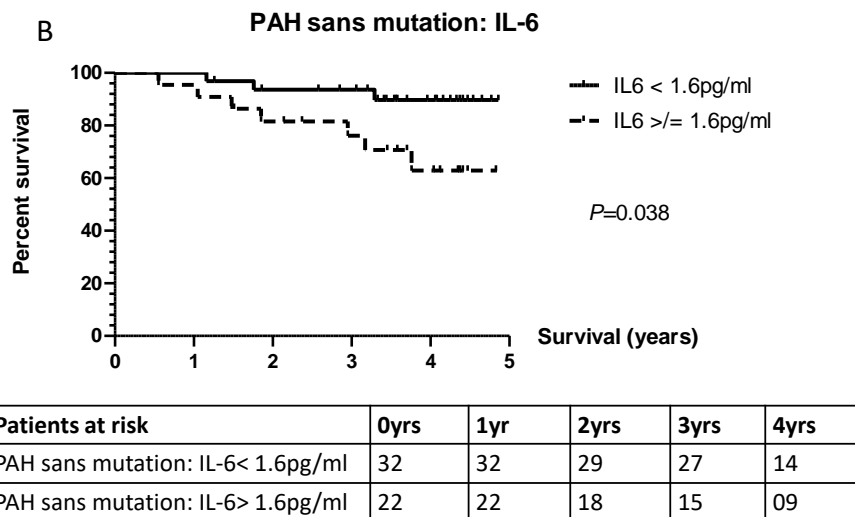
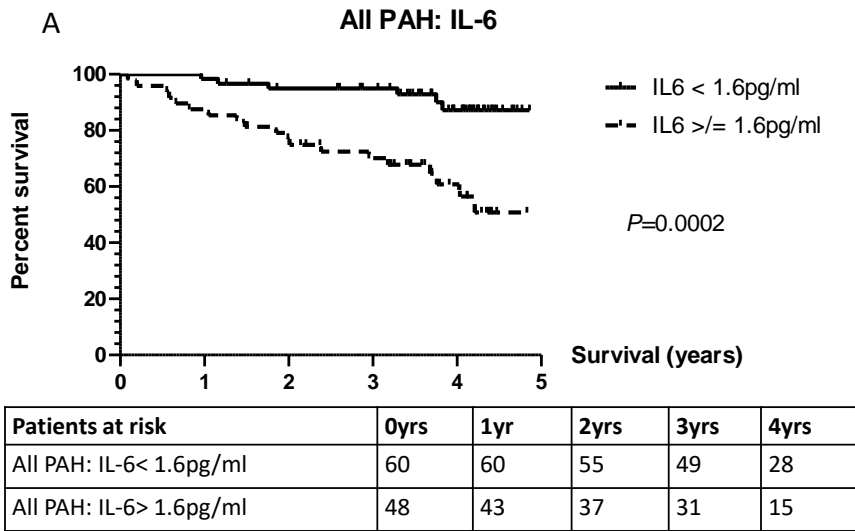
Patients at risk	0yrs	1yr	2yrs	3yrs	4yrs
PAH sans mutation: NT-proBNP < 300ng/l	27	27	26	24	12
PAH sans mutation : 300 < NT-proBNP ≤ 1400 ng/l	14	14	11	9	7
PAH sans mutation: NT-proBNP > 1400ng/l	11	11	10	8	3

Supplementary Figure 2

Kaplan-Meier analyses based on NT-proBNP values. Graphs (A-B) show Kaplan-Meier curves

based on tertiles derived from the current cohort of *BMPR2mut* (A) and PAH sans mutation (B)

patients. Graphs (C-D) show Kaplan-Meier curves based on European Respiratory Society definitions of 'low' (<300ng/l) and 'high' (>1,400ng/l) values of NT-proBNP for *BMPR2mut* (C) and PAH sans mutation (D) patients.



Supplementary Figure 3

Kaplan-Meier analyses based on a proposed cut-off value of 1.6pg/ml (median value for IL-6 in the *BMPR2mut* cohort and in the IPAH Simpson cohort). Graph (A) shows a Kaplan-Meier curve from the entire group of PAH patients and graph (B) shows the corresponding analysis in PAH without driving mutations alone.