

## **Supplementary Information for:**

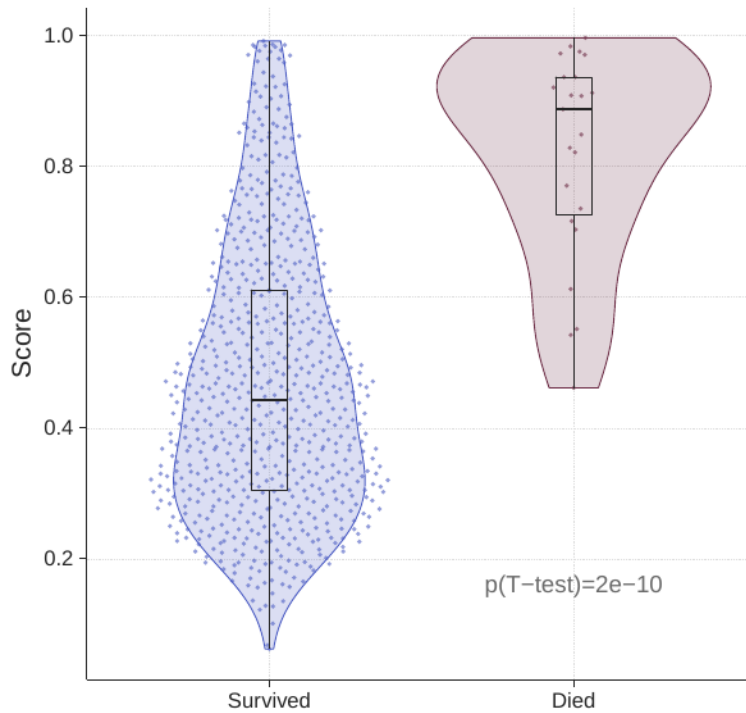
A 6-mRNA host response whole-blood classifier accurately predicts severity of COVID-19

Ljubomir Buturovic<sup>1,\*</sup>, Hong Zheng<sup>2,3,\*</sup>, Benjamin Tang<sup>4-7</sup>, Kevin Lai<sup>8</sup>, Win Sen Kuan<sup>9</sup>, Mark Gillett<sup>10</sup>, Rahul Santram<sup>11</sup>, Maryam Shojaei<sup>4,5</sup>, Raquel Almansa<sup>12</sup>, Jose Ángel Nieto<sup>13</sup>, Sonsoles Muñoz<sup>13</sup>, Carmen Herrero<sup>13</sup>, Nikolaos Antonakos<sup>14</sup>, Panayiotis Koufargyris<sup>14</sup>, Marina Kontogiorgi<sup>14</sup>, Georgia Damoraki<sup>14</sup>, Oliver Liesenfeld<sup>1</sup>, James Wacker<sup>1</sup>, Uros Midic<sup>1</sup>, Roland Luethy<sup>1</sup>, David Rawling<sup>1</sup>, Melissa Remmel<sup>1</sup>, Sabrina Coyle<sup>1</sup>, Yiran E. Liu<sup>2,15</sup>, Aditya M Rao<sup>2,16</sup>, Denis Dermadi<sup>2,3</sup>, Jiaying Toh<sup>2,16</sup>, Lara Murphy Jones<sup>2,17</sup>, Michele Donato<sup>2,3</sup>, Purvesh Khatri<sup>2,3,§</sup>, Evangelos J. Giamarellos-Bourboulis<sup>14,§</sup>, Timothy E Sweeney<sup>1,§</sup>

## **Table of Contents:**

Supplementary Figures 1-4

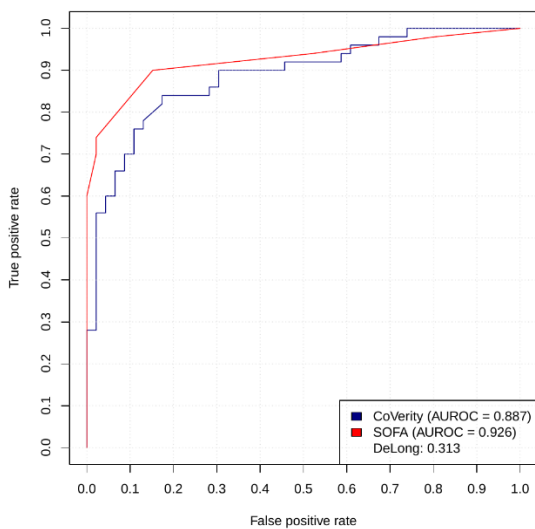
Supplementary Tables 1-3



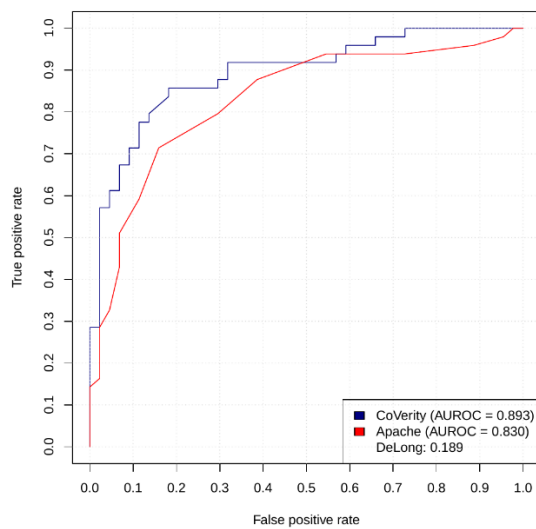
**Supplementary Figure 1.** Distribution of the pooled training set cross-validation 6-mRNA score for the best logistic regression model. Blue = survivors, red=non-survivors.

**Supplementary Figure 2.** Comparison of ROC curves for 6-mRNA (“CoVerity”) classifier and clinical markers for severe respiratory failure outcome.

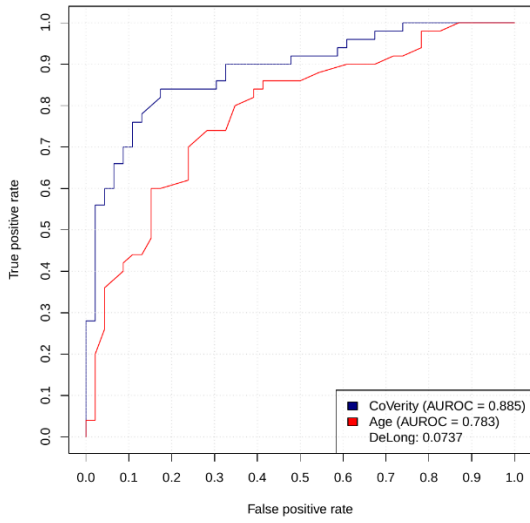
### SOFA



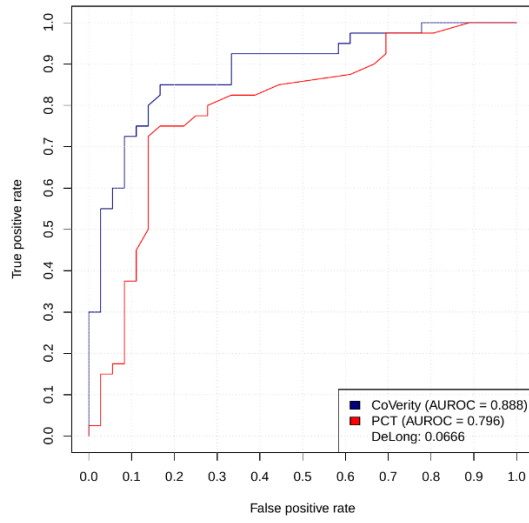
### APACHE



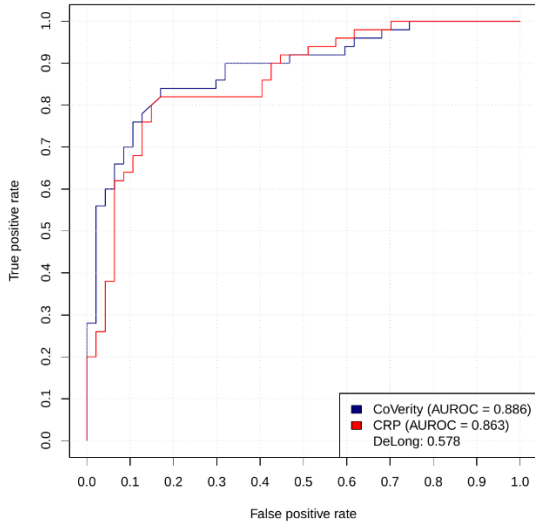
### Age



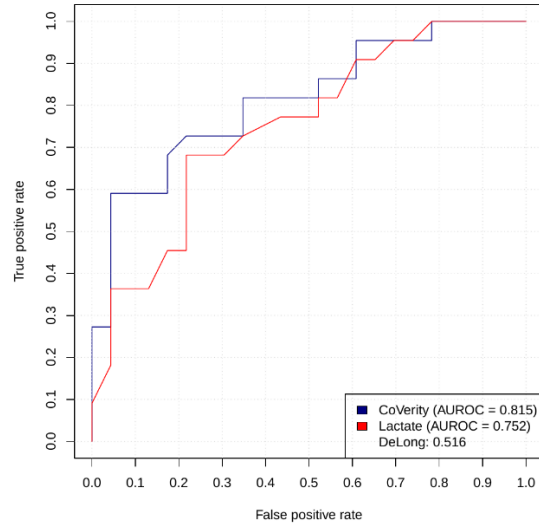
### PCT



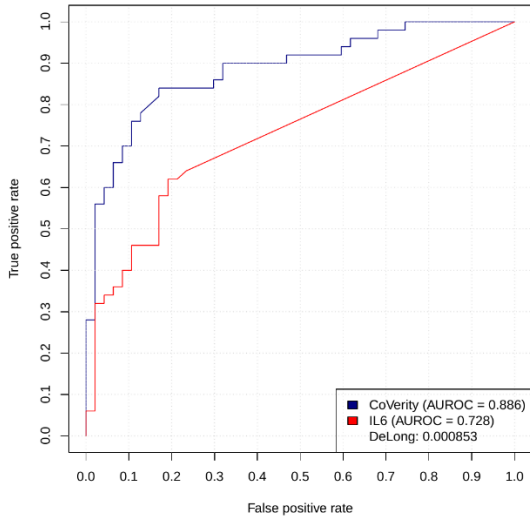
### CRP



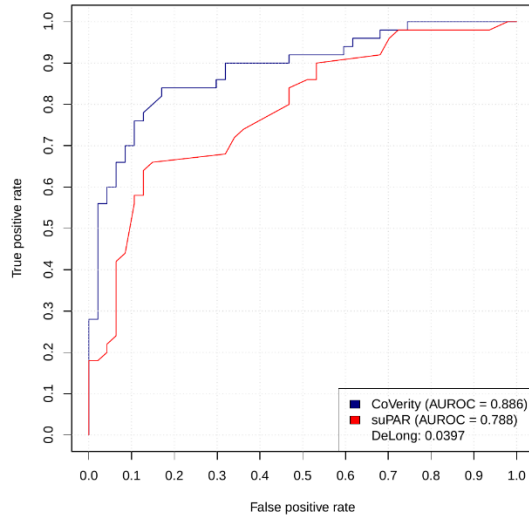
### Lactate



IL-6

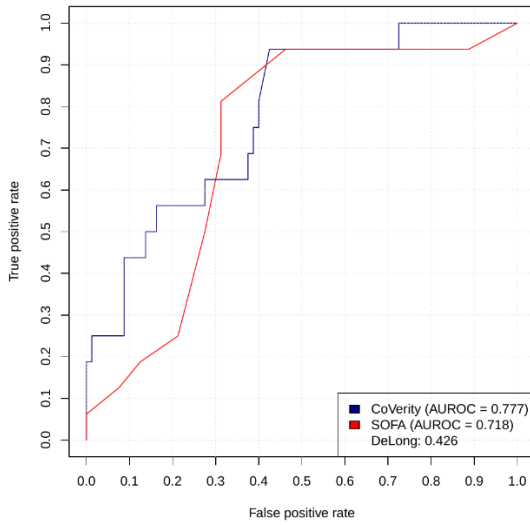


suPAR

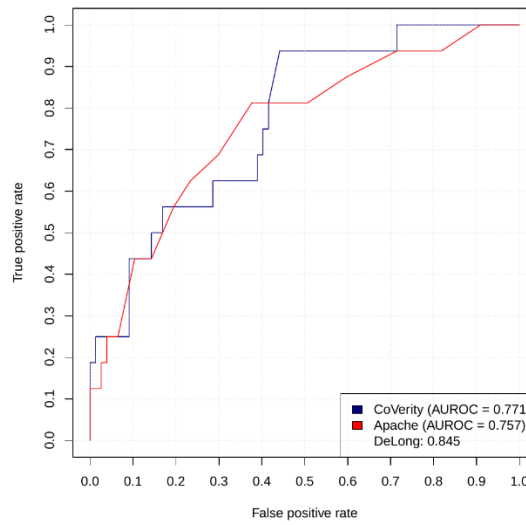


**Supplementary Figure 3.** Comparison of ROC curves for 6-mRNA classifier (“CoVerity”) and clinical markers for death outcome.

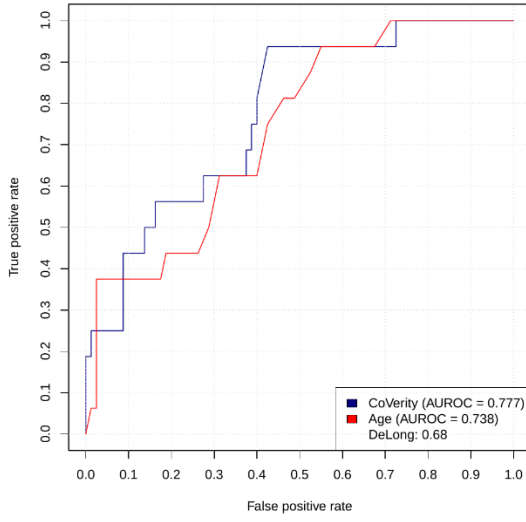
SOFA



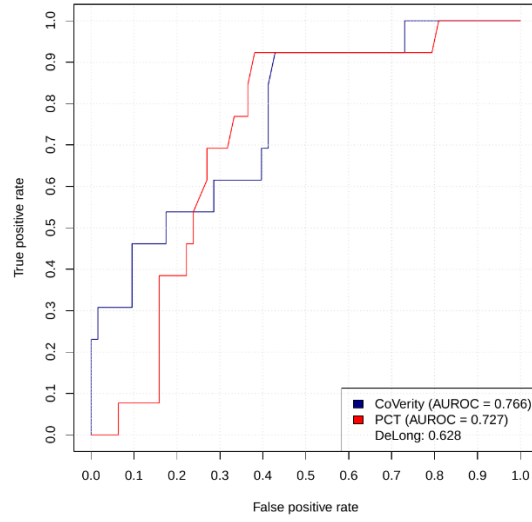
APACHE



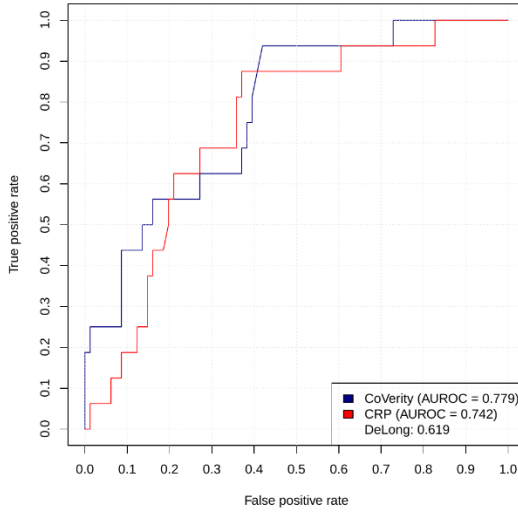
Age



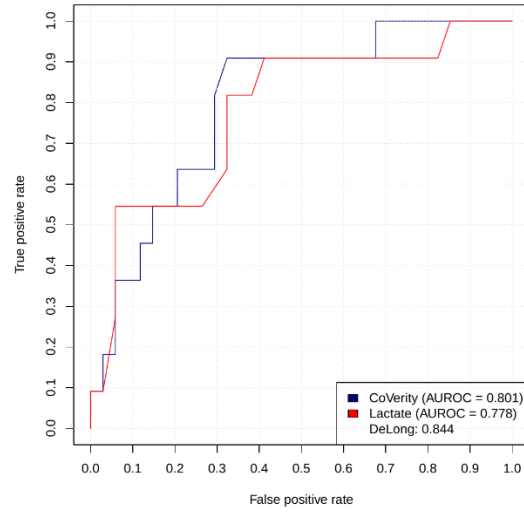
PCT



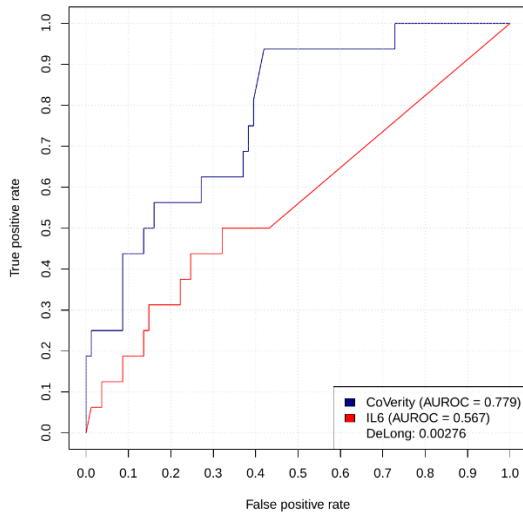
CRP



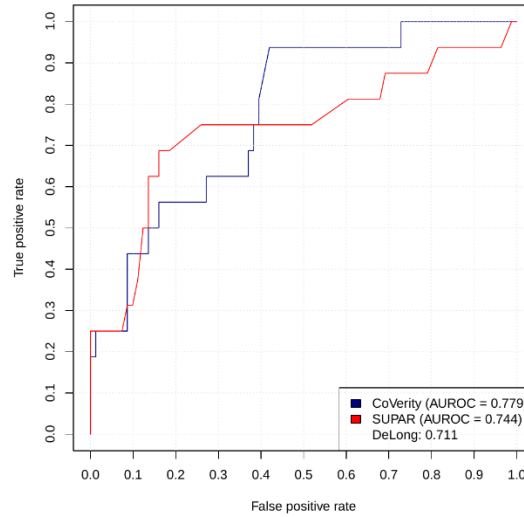
Lactate

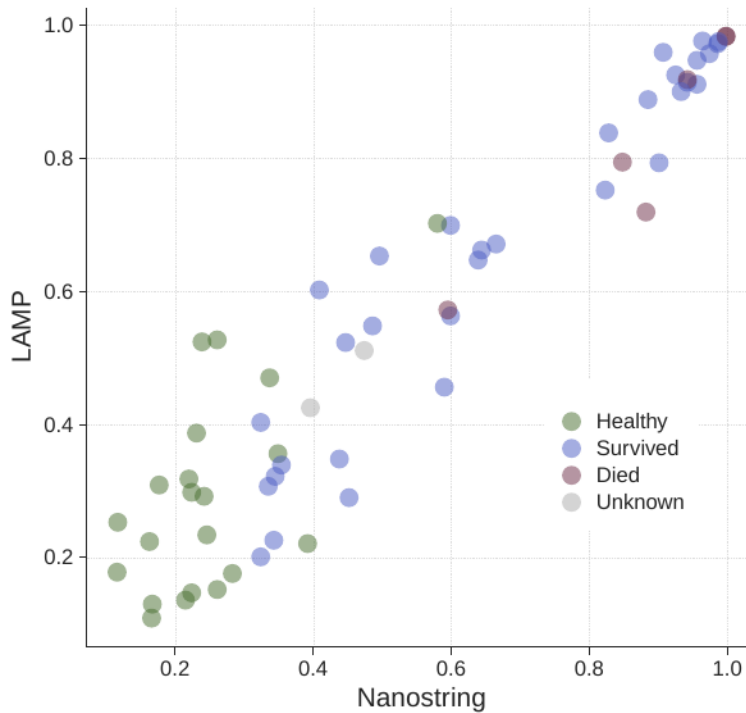


IL-6



suPAR





**Supplementary Figure 4.** Correlation of the 6-mRNA classifier scores using rapid qRT-LAMP panel and NanoString nCounter gold standard shows excellent agreement (Pearson R = 0.95) across n=61 clinical samples.

**Supplementary Table 1.** Characteristics of retrospective viral infection (non-COVID-19) studies used for independent validation.

Study identifier	First author or PI	Study description	Timing of sample collection	N (total/healthy/non-severe/severe/fatal)	Age	Male (n (%))	Country	Platform
GSE103842	Rodriguez-Fernandez	RSV infected infants	Within 24 hours of hospitalization	74,12,62,0,0	Child (0-2 years)	48(65)	USA	Illumina
GSE111368	Dunning	Patients with severe influenza with or without bacterial co-infection	Samples were obtained at three time points: T1 (recruitment), T2 (approximately 48 h after T1) and T3 (at least 4 weeks after T1)	239,130,81,28,0	Adult (18-71 years)	111(46)	UK	Illumina
GSE20346	Parnell	Adults with CAP	Hospital admission	22,18,0,4,0	Adult (21-75 years)	7(32)	Australia	Illumina
GSE27131	Berdal	Patients with documented influenza, bilateral chest infiltrates, and in need of ventilation support, without significant co-morbidity	Admission to ICU	13,7,0,3,3	Adult (25-59 years)	9(69)	Norway	Affymetrix

GSE77087	de Steenhuijse n	Outpatient and inpatient RSV patients	Either at the outpatient clinics or within a median of 24 hours of admission in the pediatric ward or the pediatric ICU	104,23,81,0,0	Child (0-2 years)	67(64)	USA	Illumina
GSE67059	Heinonen	Asymptomatic and symptomatic rhinovirus in children	ED (outpatients) or within 48 hours of hospitalization (inpatients)	137,37,100,0,0	Child (0-2 years)	87(64)	USA, Finland, Spain	Illumina
GSE21802	Bermejo-Martin	Patients attending to the participants ICUs with primary viral pneumonia during the acute phase of influenza virus illness with acute respiratory distress and unequivocal alveolar opacification involving two or more lobes with negative respiratory and blood bacterial cultures at admission	Admission to ICU	20,4,12,2,2	Adult (18-65 years)	12(60)	Spain	Illumina
GSE66099	Sweeney, Alder	Septic children in PICU	Admission to ICU	58,47,0,9,2	Child (0-10 years)	32(55)	USA	Affymetrix
GSE101702	Tang, Zerbib	Influenza patients with varying severity of infection	Within 24 hours of their presentation to the hospital	159,52,107,0,0	Adult (17-90 years)	63(40)	Australia, Canada, Germany	Agilent
GSE17156_FLU	Zaas	Influenza challenge study	Multiple time points	25,17,8,0,0	Adult (>18 years)	12(48)	USA, UK	Affymetrix
GSE17156_RSV	Zaas	RSV challenge study	Multiple time points	29,20,9,0,0	Adult (>18 years)	16(55)	USA, UK	Affymetrix
GSE17156_RHINO	Zaas	Rhinovirus challenge study	Multiple time points	29,19,10,0,0	Adult (>18 years)	16(55)	USA, UK	Affymetrix
GSE40012	Parnell	Adults with CAP	Within 24 hours of admission to ICU	38,36,0,2,0	Adult (22-75 years)	13(34)	Australia, Hong Kong	Illumina
GSE68004	Jaggi	Kawasaki disease compared to other febrile patients	Hospital admission	56,37,19,0,0	Child (0-16 years)	25(45)	USA	Illumina
EMTAB5195	Jong	Respiratory syncytial virus infected infants	Within 24 hours of presentation to the hospital	43,4,21,18,0	Child (0-2 years)	27(63)	Netherlands	Affymetrix
GSE6269	Ramilo	Sepsis patients with influenza or bacterial infection		24,6,18,0,0	Child (0-18 years)	15(62)	USA	Affymetrix, Illumina
GSE68310	Zhai	Influenza and other acute respiratory viral infections	Multiple time points	157,128,29,0,0	Adult (18-49)	77(49)	USA	Illumina
GSE117827	Yu	Children with acute viral infection	Hospital admission	19,6,13,0,0	Child (0-11 years)	14(74)	USA	Affymetrix
GSE25504	Smith, Dickinson	Septic neonates	Hospital admission, at the time of first clinical signs of suspected sepsis	9,6,3,0,0	Child (0-1 year)	9(100)	UK	Affymetrix

GSE4607	Wong, Cvijanovich	Septic children in PICU	Within 24 hours of admission to ICU	22,15,0,5,2	Child (0-10 years)	14(64)	USA	Affymetrix
GSE38900	Mejias	Children with acute LRTI	Hospital admission	140,39,101,0,0	Child (0-2 years)	76(54)	USA, Finland	Illumina

**Supplementary Table 2:** Oligonucleotide sequences for detection of 6 informative viral severity markers.

Oligo ID	Sequence
PD HK3v4 F3	ACCTGAGGAGAGTGACTAGCTTCT
PD HK3v4 B3	GCCTGCTCCATGGAACCCAAGA
PD HK3v4 FIP	TCAGAGCAACTCAGGGTTTCTTCCCCTGTGGAAGCTCATGGAC
PD HK3v4 BIP	TCAGAGCTGGTGAGGAGTGCCTGGCTTGGATCTGCTGTAGC
PD HK3v4 FL	CCGCAACCCTGAAGACCCA
PD HK3v4 BL	GCAGTTCAAGGTGACAAGGGCAC
PD BATFv3 F3	CTGAGTGTGAGAGCCCGGAAGATTT
PD BATFv3 B3	TGTTTCAGCACCGACGTGAAGTACTT
PD BATFv3 FIP	TACGATTTTTCTCCCTCCTCTGAACTTTCAGCAGTGACTCCAGCTTCAGC
PD BATFv3 BIP	GAAGAGCCGACAGAGGCAGTGCTTGATCTCCTTGCGTAGAGCC
PD BATFv3 LF	CATCAGATGAGTCCTGTTTGCCAGG
PD BATFv3 LB	GCACCTGGAGAGCGAAGACCT
PE DEFA4 i2v4-12 F3	AGGTGATGAGGCTCCAGG
PE DEFA4 i2v4-12 B3	TGAAACTCACACCACCAATGA
PE DEFA4 i2v4-12 FIP	ACCTGAAGAGCAGAGCTTTTATCCCAGCGTGGGCCAGAAGAC
PE DEFA4 i2v4-12 BIP	TCAGGCTCAACAAGGGGCATGGCAGTTCCCAACACGAAGTT
PE DEFA4 i2v4-12 FL	GCTCTTGAGATTAGTATTCTGCCGG
PE DEFA4 i2v4-12 BL	GTCCTGTATAGATAAAGGAAACGTA
PD LY86v9 F3	CTTGACCTAGCTCTCATGTCTCAA
PD LY86v9 B3	CACATGATAGTAGCATTGGCACA
PD LY86v9 FIP	GCATAGTAAATCTGCTCTCCTTTCCGGCTCATCTGTTTTGAATTTCTCCTA
PD LY86v9 BIP	GGCCTGTCAATAATCCTGAATTTACTGGTGGACCGTTTTTCAGTGTAC
PD LY86v9 FL	CCACAGAAAGAAAACCTGGGCA
PD LY86v9 BL	CCTCAGGGAGAATACCAGGTTT
PD TGFBIv4 F3	GGTGATGAAATCCTGGTTAGCGGA
PD TGFBIv4 B3	CGCTGATGCTTGTGTTGAAGATCTC
PD TGFBIv4 FIP	AGGCTCCTTGTTGACTACTACCACGCCCTGGTGCGGCTAAAGTCT
PD TGFBIv4 BIP	TGACATCATGGCCACAAATGGCGTCAGAGTCTGCAAGTTCATCCCCT
PD TGFBIv4 LF	GCTGACTTCCAGCTTGTACCT
PD TGFBIv4 LB	CTCCAGCCAACAGACCTCAGGAA
PE HLA-DPB1v1 F3	CTGCGGAGTACTGGAACAG
PE HLA-DPB1v1 B3	CGTCACGTGGCAGACAAG
PE HLA-DPB1v1 FIP	GCCCAGCTCGTAGTTGTGTCTGGAAGGACATCCTGGAGGAGA
PE HLA-DPB1v1 BIP	CCGAGTCCAGCCTAGGGTGAGGTTGTGGTGCTGCAAGG
PE HLA-DPB1v1-1 FL	ATCCTGTCCGGCACTGC



PE HLA-DPB1v1-1 BL	ATGTTTCCCCCTCCAAGAAGG
--------------------	-----------------------

**Supplementary Table 3.** Multiple regression model in the COVID-19 cohort with severe respiratory failure as the dependent variable.

	Estimate	Std. Error	Statistic	P-value
(Intercept)	-13.5	4.36	-3.10	<b>0.00197</b>
6-mRNA score	5.42	4.04	1.34	0.181
Age (years)	0.104	0.0460	2.26	0.0239
CRP (mg/l)	0.0132	0.00782	1.70	0.090
PCT (ng/ml)	-0.185	0.210	-0.882	0.378
Gender (Male)	-1.37	1.297	-1.06	0.290
SOFA	0.73	0.301	2.42	<b>0.016</b>