

Noname manuscript No.  
(will be inserted by the editor)

# 1 A snapshot of a pandemic: the interplay between social isolation and 2 COVID-19 dynamics in Brazil

3 Cláudia P. Ferreira · Diego Marcondes · Mariana P.  
4 Melo · Sérgio M. Oliva · Cláudia M. Peixoto · Pedro S.  
5 Peixoto

6 Received: date / Accepted: date

## 7 Summary

8 In response to the COVID-19 pandemic, most governments around the world implemented some kind of  
9 social distancing policy in an attempt to block the spreading of the virus within a territory. In Brazil,  
10 this mitigation strategy was first implemented in March 2020 and mainly monitored by social isolation  
11 indicators built from mobile geolocation data. While it is well known that social isolation has been playing  
12 a crucial role in epidemic control, the precise connections between mobility data indicators and epidemic  
13 dynamic parameters have a complex interdependence. In this work, we investigate this dependence for several  
14 Brazilian cities, looking also at socioeconomic and demographic factors that influence it. As expected, the  
15 increase in the social isolation indicator was shown to be related to the decrease in the speed of transmission  
16 of the disease, but the relation was shown to depend on the urban hierarchy level of the city, the human  
17 development index and also the epidemic curve stage. Moreover, a high social isolation at the beginning of  
18 the epidemic relates to a strong positive impact on flattening the epidemic curve, while less efficacy of this  
19 mitigation strategy was observed when it has been implemented later. Mobility data plays an important role  
20 in epidemiological modeling and decision-making, however, we discuss in this work how a direct relationship  
21 between social isolation data and COVID-19 data is hard to be established. Understanding this interplay is  
22 a key factor to better modeling, for which we hope this study contributes.

23 **Keywords** Human mobility · Mobile geolocation · Urban hierarchy · Spatial-temporal patterns · Temporal  
24 series · COVID-19

## 25 1 Introduction

26 The importance of human mobility during the COVID-19 outbreak has been clear since the beginning of the  
27 epidemic, in Wuhan, China in late December 2019, from where it spread throughout the highly connected  
28 network of air and land routes. ~~NOTE: This preprint reports new research that has not been certified by peer review and should not be used to guide clinical practice.~~ It is not  
29 the first disease that used this pathway to move, since SARS and H1N1, for example, have also used it,  
30 but is certainly the most efficient one to do so in the last century. Since it is transmitted mainly through  
31 contaminated droplets of naso-oropharyngeal secretions from infected individuals, the rate of infections by  
32 the SARS-Cov-2 is related to human mobility in general, but more specifically to the close contacts between  
33 individuals of a population<sup>23</sup>.

Mariana P. Melo  
Department of Basic and Environmental Sciences, Engineering School of Lorena, University of São Paulo, Lorena, Brazil.

Cláudia P. Ferreira  
São Paulo State University (UNESP), Institute of Biosciences, Botucatu, São Paulo, Brazil

Cláudia M. Peixoto · Sérgio M. Oliva · Diego Marcondes · Pedro S. Peixoto  
Department of Applied Mathematics, Institute of Mathematics and Statistics, University of São Paulo, São Paulo, Brazil

34 As an emerging disease, very little was known about it, and, until the development of vaccines, there was  
35 no definitive scientific-based medical treatment or pharmaceutical prevention method for it. Therefore, its  
36 control was based mainly on non-pharmaceutical methods seeking either to reduce the odds of contact with an  
37 infected individual causing an infection, such as mask-use and hand washing, or to avoid the contact between  
38 an infected and susceptible individual, such as social distancing, lockdown, and detection and isolation of  
39 infected individuals. While the efficacy of mask-use and hand-washing, for example, may be quantified under  
40 controlled circumstances<sup>37</sup>, the efficacy of measures aiming to diminish the contacts between individuals  
41 through the decrease of human mobility may be hard to quantify. Besides, human mobility measures such  
42 as isolation indexes are often not accurate or hard to interpret<sup>31</sup>. In summary, the spread of COVID-19 is  
43 a multi-faceted complex process that is influenced by many uncontrollable variables, which may mask the  
44 effect of human mobility on it<sup>8</sup>, so it is difficult to establish a cause and effect relationship between an index  
45 of human mobility and the rate of infections<sup>20</sup>.

46 Nevertheless, the pandemic spread has been frequently modeled by dynamical systems (deterministic or  
47 stochastic models)<sup>18</sup> which usually have as control parameter some measure of amplification/attenuation of  
48 the disease infection rate due to different transmission scenarios of varying human contact. Human contact  
49 is indirectly measured through indices of human density, mobility, isolation, and social distancing. While in  
50 theory this is well accepted and provides insights on possible outcomes of the pandemic, it is usually very  
51 difficult to quantify the effects of non-pharmaceutical interventions on infection rates<sup>3,7,9</sup>, so most studies  
52 use *ad hoc* tuning parameters<sup>40,38</sup>.

53 Focusing on Brazil, it is the largest and most populated country of South America with around 210 million  
54 inhabitants. Although it is the 9th world economy, according to the International Monetary Fund<sup>27</sup>, it is  
55 a country marked by great inequalities and underdevelopment. Brazil is divided into five disparate regions  
56 (see Figure 1). The South and Southeast regions concentrate more than half the population, have the most  
57 developed infrastructure, are home to the wealthiest states and financial centers, offer better-paying jobs,  
58 and have better socio-economic indexes. The Midwest region, the least populated of them, is home to the  
59 country capital city Brasília, has a lower population density, consisting most of the agricultural land, and  
60 has socio-economic indexes lower than the southern regions, with the exception of the district of the capital  
61 city, which has better indexes. The North and Northeast regions are the poorest, with lower socio-economic  
62 indexes and underdeveloped infrastructure. Although both regions suffer from the lack of infrastructure, the  
63 situation is worse in the North, whose territory is covered by the Amazon rain forest, which makes logistics  
64 difficult in the region.

65 The first case of COVID-19 in Latin America was confirmed on February 25 in a traveller returning to  
66 São Paulo city from the Lombardy region in Italy, the epicenter of the first wave of the disease in Europe,  
67 and the first death by the disease was reported on March 12, also in São Paulo. After that, with the epidemic  
68 evolving in Brazil, on March 20 the Ministry of Health recognized that community transmission was occurring  
69 across the country, as a strategy to ensure a collective effort and logistic and financial support for states  
70 and its population. This was followed by the implementation of nationwide non-pharmaceutical measures,  
71 including physical distancing, isolation, quarantine, compulsory notification, and mask-use mainly by elderly  
72 and exposed/infected people<sup>10</sup>.

73 Due to a lack of national coordination, the pandemic was mainly fought by the 27 states and 5,568  
74 municipalities who took diverse, heterogeneous and mainly non-coordinated decisions by government officials  
75 at the federal, state and municipal levels. This led to both success and failure stories and to distinct efficacy  
76 of non-pharmaceutical measures in slowing the rate of transmission across the country, which outlined the

77 importance of taking into account the socio-economical background of a region when implementing such  
78 measures. Such a diverse response to the pandemic is this paper reason of being, since in a such heterogeneous  
79 scenario a much needed assessment of the efficacy of the measures to stop the disease spread is not a  
80 straightforward task, so a careful quantitative and qualitative analysis of the disease evolution and of measures  
81 such as social isolation is needed to evaluate this efficacy.

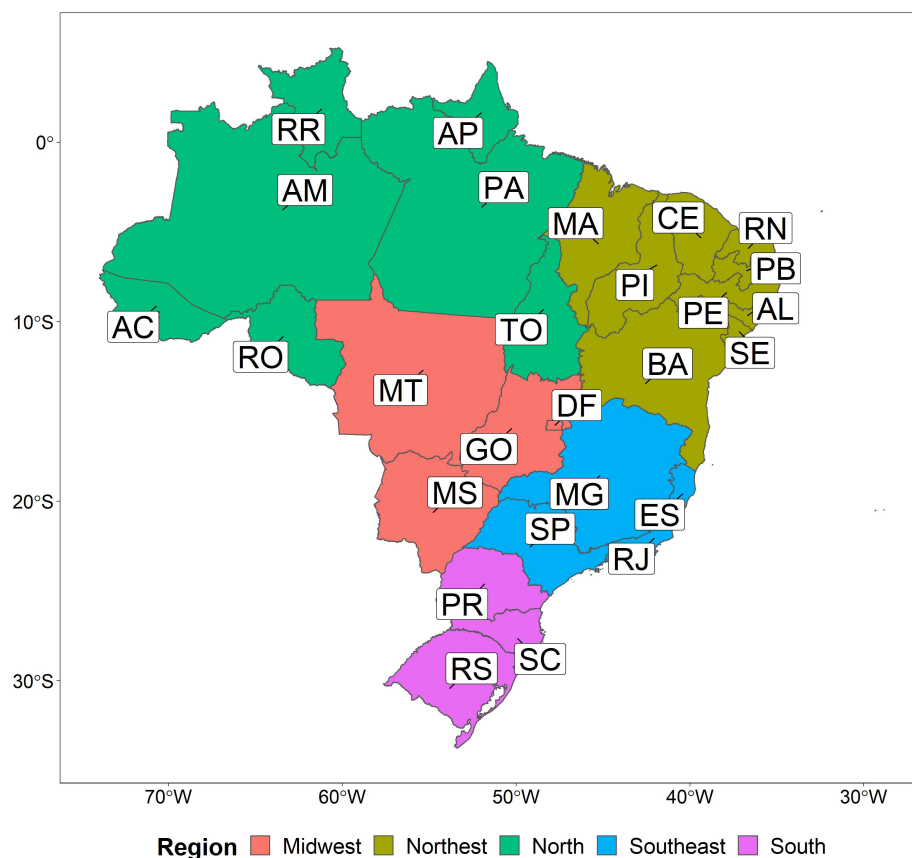


Fig. 1 Map of Brazilian regions and states abbreviations.

82 This paper aims to assess the effectiveness of human mobility control measures on reducing the COVID-  
83 19 spread in Brazil, taking into account many aspects of the locations and their population, such as urban  
84 hierarchy, demography, and socio-economic profile. Our assessment focuses on the dataset containing daily  
85 cases of Severe Acute Respiratory Illness, and a daily isolation index, of the most important cities in Brazil  
86 in a period ranging from March 15 to October 30, 2020. We carefully dissect this dataset, coupling its  
87 quantitative analysis with qualitative information about measures enforced to slow the disease spread and  
88 characteristics of the population and locations around the country. With these analyses, we hope to give a  
89 snapshot of how the pandemic evolved in Brazil, and study the interplay between social isolation and COVID-  
90 19 spread in the country. Here we discuss and quantify in detail the conditions under which social distancing,  
91 measured through population local mobility, impact infection rates depending on different demography and  
92 socio-economic profiles. As a result, besides providing on its own insightful knowledge of the behavior of the  
93 pandemic in different conditions, our results allow models to be more precisely adjusted to take into account  
94 local characteristics and provide more reliable epidemic scenarios.

95 In Section 2 we present the material and methods of the quantitative analysis, while in Section 3 we  
96 present its results, and in Section 4 we discuss our findings.

## 97 2 Material and Methods

### 98 2.1 Data

#### 99 2.1.1 Human mobility

100 The social isolation index is a relative measure of the amount of people that do not leave their houses during  
101 the day. It can be calculated based on mobile users' mobility data from many private companies that work  
102 with geolocation services<sup>2,19,34,25</sup>. The government of São Paulo state, in cooperation with the 4 main mobile  
103 network services in Brazil (Oi, Tim, Vivo, Claro), publicly provide an official social isolation index for more  
104 than 100 cities of the state. The mobile network companies use radio based geolocation methods to infer  
105 the position of users, which limits its applicability, being adequate only for large cities with many stations.  
106 Google<sup>19</sup> and Apple<sup>2</sup> only provide mobility data for a small subset of Brazilian cities.

107 Due to the low coverage of brazilian cities of Google, Apple and Network companies, in this study,  
108 we adopt a dataset provided by the company InLoco\*<sup>25</sup>. This company provides anonymous geolocation  
109 technologies for several mobile applications. The Software Development kit provided by InLoco uses multiple  
110 mobile sensors, including Wi-Fi, GPS, bluetooth and other, to infer the mobile location with the accuracy of  
111 meters. The company does not collect any user personal information and users need to *opt in* for geolocation  
112 services in the application. Several safety measures are used to ensure data safety and the company complies  
113 with Brazilian law of data protection, which ensures ethical and legal assurances of data collection and  
114 usage<sup>26</sup>.

115 For the social isolation index, the home location of an user is estimated based on the recent location  
116 registered during night periods. Once the home location is known for each user in the database, InLoco  
117 calculates the number of users that left their homes during the day. The house location and the breach  
118 in isolation is calculated considering an Hexagonal hierarchical geospatial indexing system (H3 - <https://h3geo.org/>)  
119 with resolution level 8 (hexagons have edges with approximately 460m of length). The H3  
120 data is further aggregated to city level. For this work, only aggregated city level with the isolation index  
121 pre-computed from the company was available, therefore avoiding any anonymity issues in what concerns  
122 this work.

123 The main advantage of using the InLoco dataset is its wide coverage. In mid 2020 its database consisted  
124 of more than one fourth of the mobiles in the country<sup>†</sup>. While this data can have sample biases, with  
125 respect to the nature of the mobile application use and smartphone diffusion in the country, its is, to our  
126 knowledge, the vastest dataset of this kind for Brazil. Also, it has been widely used in the pandemic to  
127 monitor public efforts to reduce mobility and also in several academic studies<sup>5,6,14,32,33</sup>. All data used in this  
128 work is provided as supplementary material.

129 In the analysis, for each municipality, the daily observed social isolation index was subtracted from the  
130 average value observed in the respective city from February 1 to February 15 (before carnival holiday and  
131 the start of the pandemic in Brazil). Therefore, in what follows, we will refer to the isolation index as being  
132 this difference from the reference period, interpreted as the *increment/reduction* in social isolation.

#### 133 2.1.2 Reported cases

134 The number of reported cases of Severe Acute Respiratory Illness (SARI), over time, was collected from the  
135 national database SIVEP-Gripe<sup>11</sup>. It comprises all severe hospitalized cases related to respiratory viruses

\*Recently the company changed name to Incognia

†Due to a recent company shift in business area, the base suffered a reduction in size in 2021 and the company stopped providing the Social Isolation Index.

136 whose notification is compulsory in Brazil. It has been a good thermometer to catch the disease spatio-  
137 temporal dynamics in the country, since it has struggled with an insufficient capacity of molecular diagnosis  
138 and fast tests<sup>21</sup>. The information available does not distinguish between imported and autochthonous cases.  
139 Although the first COVID-19 case occurred on February 25, the dataset used here ranges from March 15 until  
140 October 30, 2020, since before that changes were not yet implemented on the surveillance system of SIVEP-  
141 Gripe to identify COVID-19 cases among cases of other diseases such as Influenza, Respiratory Syncytial  
142 virus, Adenovirus, and Parainfluenza<sup>4</sup>. This period comprises the first wave of the disease in Brazil during  
143 which it is supposed the transmission of a unique variant of the virus in Brazilian territory.

144 A nowcasting procedure was performed, using the R package NobBS<sup>30</sup>, to correct delay in notifications  
145 which in Brazil can take up to forty days. Since the nowcasted daily number of cases still presented weekly  
146 variations, it was smoothed by taking a 7-day moving average. To compare the disease spread among the  
147 cities, the daily number of cases was divided by 100,000 inhabitants.

148 The effective reproduction number  $R_t$  was calculated using the nowcasted smoothed data of incidence.  
149 For this, we considered the epidemiological model SEIR (susceptible-exposed-infected-recovered), and the  
150 approach proposed by Wallinga and Lipsitch<sup>36</sup>. The parameters considered to calculate  $R_t$  are the latent  
151 period ( $\eta^{-1}$ ) of 3.0 days, the infectious period ( $\tau^{-1}$ ) of 6.4 days, and the life expectancy in Brazil ( $\mu^{-1}$ ) of  
152 75 years. The rates of leaving the exposed and infectious classes are denoted by  $s_1 = \eta + \mu$  and  $s_2 = \tau + \mu$ ,  
153 respectively. Therefore, the generation interval distribution  $g(t)$  is given by<sup>1</sup>

$$g(t) = \sum_{i=1}^2 \frac{s_1 s_2 e^{s_i t}}{\prod_{j=1, j \neq i}^2 (s_j - s_i)} \quad \text{with } t \geq 0.$$

154 After normalizing  $g(t)$  we can evaluate  $R_t$  as

$$R_t = \frac{b(t)}{\int_0^\infty b(t-a)g(a)da},$$

155 and the daily transmission index is calculated as  $R_t \times \tau$ .

### 156 2.1.3 Urban hierarchy, human development index, and transportation infrastructure

157 One variable that can directly affect the spread of the epidemic over the country is the hierarchy of urban  
158 centers. In Brazil, the classification is done by Instituto Brasileiro de Geografia e Estatística (IBGE)<sup>24</sup>, and  
159 is based on territory management, offering of trade and services, financial services, offering of university  
160 education, media and communication markets, culture and sports, transportation services, agricultural ac-  
161 tivities, and international links. The urban hierarchy of Brazil has five levels: (i) Metropolises, (ii) Regional  
162 Capitals, (iii) Sub-Regional Centers, (iv) Zone Centers, and (v) Local Centers. The unit of this classification  
163 is the population arrangement consisting of the clustering of two or more municipalities and constitutes a  
164 reference framework of urbanization in the country. On each level, the main city that comprises the urban  
165 arrangement gives it its name.

166 The Metropolises level comprise the main urban centers of Brazil divided into three sub-levels: Greater  
167 National Metropolis, National Metropolis and Metropolis. The only Greater National Metropolis is São  
168 Paulo (SP), listed as an alpha global city by the Globalization and World Cities Research Network, with  
169 21.5 million of inhabitants. The National Metropolises are the Federal District of Brasília (DF), with 3.9  
170 million inhabitants, and Rio de Janeiro (RJ), which has a population of 12.7 million. These three cities  
171 are also the main destination of travel within and from outside of Brazil. Finally, the Metropolis sub-level

172 is composed by: Belo Horizonte (MG), Curitiba (PR), Florianópolis (SC), Fortaleza (CE), Goiânia (GO),  
173 Manaus (AM), Belém (PA), Porto Alegre (RS), Recife (PE), Salvador (BA), Vitória (ES) and Campinas  
174 (SP). All of them but Campinas are capital cities of their respective states. The average population of  
175 Metropolises is 3 millions, with Belo Horizonte being the most populous with 5.2 million inhabitants and  
176 Florianópolis and Vitória the less populous with 1 and 1.8 million, respectively.

177 The second level, the Regional Capitals, are composed of 97 urban centers with regional influence, which  
178 are divided in three groups: A, B and C. The Regional Capitals A is composed of 8 capital cities of states in the  
179 Northeast and Midwest region, and the city of Ribeirão Preto (SP). These cities have a similar population  
180 size, varying between 0.8 and 1.4 million inhabitants, and share a direct relationship with Metropolises.  
181 There are 24 Regional Capitals B, ten of them in the South region, which have an average population of  
182 530 thousand inhabitants, the most populous being São José dos Campos (SP) with 1.6 million inhabitants.  
183 These cities are reference centers within their states, with the exception of state capitals Palmas (TO) and  
184 Porto Velho (RO) which also exerts influence on other states. The Regional Capitals C are formed by 64  
185 cities, 30 of them in the Southeast region, with average population size of 360 thousand inhabitants.

186 The Sub-regional Centers level is composed of 352 cities with less complex management activities than  
187 Regional Capitals. The fourth level, Zone Centers, is composed of 398 cities with less management activities  
188 and, finally, the fifth level, the Local Centers, is composed of 4.037 cities, that is, 82.4% of urban centers of  
189 Brazil with an average of 12.5 thousand inhabitants and whose influence is restricted to its own territorial  
190 limits.

191 Socio-economic variables are also usually associated with disease spreading, and the Human Development  
192 Index (HDI) is known to be an important factor. The HDI combines measurements of life expectancy,  
193 education, and per-capita income. It ranges from 0,418 to 0,862 among the cities, while the states average  
194 ranges from 0,631 to 0,824. The index is generally greater on states in the center-south regions and lowest  
195 in the northern regions. Indeed, the higher average index can be found at São Paulo (SP), Santa Catarina  
196 (SC), and Distrito Federal (DF) and the lower at Pará (PA), Alagoas (AL), Maranhão (MA), and Piauí (PI).

197 Lastly, transportation infrastructure vary in the country. Although the primary source of transportation  
198 is the road transportation, it is highly concentrated in the center-south regions, specially in the state of São  
199 Paulo. The exception to this rule is the Amazon region where road transportation loses its importance to  
200 waterways thanks to the dense natural river network. The lack of adequate roads in the North region and  
201 the logistical issues with connecting roads with waterway transportation are some of the bottlenecks of the  
202 region's development. From a human mobility point of view, while the majority of trips within states are by  
203 road, the main mean of transportation between states are airplanes, that count with a network of around  
204 100 airports around the country. International airports are located at São Paulo (SP), Rio de Janeiro (RJ),  
205 Brasília (DF), Belo Horizonte (MG), Campinas (SP), Salvador (BA), Fortaleza (CE), Recife (PE), Porto  
206 Alegre (RS), Florianópolis (SC), Manaus (AM), Belém (PA), Natal (RN), and Campo Grande (MS).

### 207 **3 Results**

#### 208 **3.1 Human mobility versus reported cases**

209 In this section, we study the relationship between the daily social isolation index and the daily incidence of  
210 the disease in the main cities that comprise the metropolises, which are São Paulo, Brasília, Rio de Janeiro,  
211 Belo Horizonte, Curitiba, Florianópolis, Fortaleza, Goiânia, Manaus, Belém, Porto Alegre, Recife, Salvador,  
212 Vitória, and Campinas. Similar to what was done for the daily incidence, the daily social isolation index



213 was smoothed by taking a 7-day moving average. Figure 2 shows the daily ratio between the social isolation  
214 index, and the daily incidence, and their respective daily average among the cities considered. Spatial-  
215 temporal variations of both measures highlight regional and temporal differences resulting from geographic,  
216 demographic, cultural and political characteristics of each main city of Brazil, whose behaviour affects other  
217 cities in their region of influence. In general, the social isolation index was negatively related with the incidence  
218 of the disease, but not linearly proportional. Besides, taking all cities together, the monthly average of the  
219 social isolation index decreased with time: from March to October they were (average value and its standard  
220 deviation), respectively,  $0.21 \pm 0.02$ ,  $0.22 \pm 0.02$ ,  $0.18 \pm 0.03$ ,  $0.13 \pm 0.01$ ,  $0.13 \pm 0.02$ ,  $0.11 \pm 0.01$ ,  $0.09 \pm 0.01$ ,  
221 and  $0.08 \pm 0.01$ .

222 In order to mitigate the effects of the disease on the healthcare system, lockdown strategies were imple-  
223 mented on some cities in the North and Northeast regions, causing the sharp increase on the social isolation  
224 index measured in Belém, Fortaleza and Recife (see Figure 2 around May 10). In Belém, differently from  
225 the other two cities, the lockdown can be clearly seen in the data since its social isolation index was below  
226 average in the period leading up to the lockdown and then increased way over the average. For these cities,  
227 the epidemic peak was from 2.5 to 4.2 times the observed average incidence on their respective days.

228 Among the cities of the Northeast region, there is Salvador, which seems to have kept a more efficient  
229 control of the disease transmission, since it endured a higher isolation rate, and had a smaller peak, compared  
230 to other cities of this region. On the other hand, there is Fortaleza, which has the lowest HDI among the  
231 three Northeast cities considered, and is one of the main entrance of travelers from outside the country  
232 visiting the North and Northeast regions, factors which can explain its low performance on controlling the  
233 spread of the disease relatively to the other two cities. Likewise, in the North region, despite the fact that  
234 the social isolation index was higher at Belém compared to Manaus, both cities had a similar epidemic  
235 temporal evolution pattern. Among the cities, these two cities have the lowest HDI and are highly connected  
236 by waterways. They belong to the Amazon region where the spread of COVID-19 took the course of the  
237 waterways and was enhanced by the long duration of the trips in boats, where mitigation strategies, such as  
238 socially distancing and hand washing, are compromised<sup>22</sup>.

239 In the Southeast region, although an increase on the social isolation index was observed in Belo Horizonte  
240 at the end of the study period, it had a similar transmission pattern as Campinas, while Vitória, which is  
241 among the cities with the highest HDI and lacks an international airport, had the best performance on disease  
242 control transmission when compared to the other Southeast cities, what can be due to these important factors.  
243 Among the South cities, despite Curitiba not having an international airport, its has worse performance on  
244 the social isolation index when compared to Porto Alegre and Florianópolis, which may be behind its larger  
245 number of reported cases. Still in the South, it is worth mentioning that not only Florianópolis has a high  
246 HDI, but also a major part of its territory is an island, which could have contributed to its high performance  
247 on controlling the disease spreading when compared to the other South cities.

248 When comparing both cities of the Midwest region, one sees that Goiânia had a social isolation index  
249 pattern similar to Brasília, but its performance to contain the spread of the disease was worse. The fact that  
250 Brasília has a higher HDI and lower population density may explain the low disease incidence compared to  
251 the other cities. Another important factor is that the Midwest region annually records the lowest number of  
252 influenza and other respiratory viruses cases inside the national territory<sup>13</sup>, so these cities might be prone  
253 to have lower incidence of a respiratory disease. Lastly, Rio de Janeiro and São Paulo, both Southeast cities,  
254 are highly connected by roadways and airways, and share a similar pattern of social isolation index, with

255 São Paulo, in general, having a better performance. Differently from the others cities, São Paulo has been  
256 having an outbreak of COVID-19 always above the average.

### 257 3.2 Lockdown strategy

258 Strict lockdown strategies were not common in Brazil in 2020, but were nonetheless implemented in four  
259 capital cities of states in the northern regions. In Figure 3 we present the daily incidence (in brown) and the  
260  $R_t$  (in blue) for four cities which implemented a lockdown, namely, São Luís, Belém, Fortaleza and Recife.  
261 Among the four cities, the first confirmed case occurred in Recife on March 12, which was then followed by  
262 Fortaleza on March 15, Belém on March 18, and São Luís on March 20. The disease spread differently in  
263 each city, which also have distinct hospital and test capacities. The first city to declare lockdown was São  
264 Luís on May 5 when it achieved 10.75 new cases per day (average of the 7 days before lockdown). It was  
265 then followed by Belém on May 7 with 7.14 new cases per day, Fortaleza on May 8 with 11.35 new cases per  
266 day, and Recife on May 16 with 8.17 new cases per day. In São Luís, the lockdown took 13 days, and it was  
267 observed a reduction of 32.5% on the number of cases per day. In Belém it took 18 days with a reduction of  
268 19.8% on the number of cases per day. In Fortaleza it took 24 days with a reduction of 33.6% of the cases  
269 per day. Finally, in Recife it took 16 days with a reduction of 8% on the number of cases per day.

270 In Figure 3, the orange vertical band represent the declaration of an emergency situation, characterized by  
271 the closing of schools, universities, bars, shopping malls, commerce, etc. In green we had the flexibilization  
272 of some measurements, and in red the lockdown period. Table 1 shows different measures on the data  
273 calculated before, during and after the lockdown period. This analysis was done considering a lag of seven  
274 days ( $\approx$  incubation period) between the social isolation index and the daily incidence.

275 In all cases, the lockdown was effective on reducing the incidence (and  $R_t$  values). This control method  
276 was clearly efficient in São Luís, which was presenting an increase on the rate of transmission before lockdown  
277 that changed to a decreasing pattern after it. Fortaleza, Belém and Recife were already diminishing the rate  
278 of transmission before lockdown occurred. Among them, Fortaleza was able to keep it longer with a high  
279 social isolation index. Although having a huge increase on social isolation index as a result of lockdown,  
280 Recife was not able to keep it for long. As a consequence, the  $R_t$  value after lockdown was similar to the one  
281 measured before it. It is interesting to note that in Recife the social isolation index was already increasing  
282 before lockdown.

283 For São Luís, the maximum incidence occurred six days before lockdown, and after lockdown disease  
284 incidence still decreased until fifteen days after it ended. For Belém, the maximum incidence occurred sixteen  
285 days before lockdown, and after lockdown the incidence still decreased until five days after it ended. For  
286 Fortaleza, the maximum incidence occurred five days before lockdown, and after lockdown the incidence still  
287 decreased until ten days after it ended. For Recife, the maximum incidence occurred eighteen days before  
288 lockdown, and after lockdown the incidence still decreased until fifteen days after it ended. The highest  
289 percentage on the reduction of the infection observed in São Luís can be related to its lower position on  
290 the urban hierarchy when compared to the other three, and to its spatial geography (it is an island). All  
291 these cities have public laboratories for the molecular diagnosis of SARS-CoV-2, but we can not compare the  
292 diagnostic capacity of each one because this data is not publicly available. The lack of diagnostic capacity  
293 can jeopardize control efforts by causing delay on decision making.



### 294 3.3 São Paulo mitigation strategies

295 The history of SARS-Cov-2 spreading on the State of São Paulo is characterized by different time and spatial  
296 scales. Starting from the regional centers, the disease displaced to municipalities with major connections, after  
297 to municipalities with minor connections, and lastly to rural municipalities (spatial pattern well explained  
298 by the gravity model). Locally, the spread was by contiguity (diffusion model)<sup>16</sup>. As the disease spread,  
299 following the example of the metropolitan region of São Paulo, the inner state adopted strong mitigation  
300 measures closing schools, universities, and all its trade, keeping only essential services such as pharmacies,  
301 supermarkets, and hospitals open. This delayed the arrival of the virus to the inner state by at least one  
302 month, letting the cities prepare their healthcare systems, which are more fragile in this region.

303 On May 27, São Paulo State started to move out from a restrictive quarantine with a flag system that  
304 classifies, based on several indicators, the disease transmission risk, and the probability of break-down of the  
305 healthcare system. Five colors were adopted: (i) red (phase 1) is considered a contamination phase and only  
306 essential services are permitted; (ii) orange (phase 2) is considered an attention phase, with the possibility of  
307 some services opening (limit of 20% of its capacity and maintaining all specific hygiene protocols); (iii) yellow  
308 (phase 3) is considered a controlled phase, with some flexibilization (limit of 40% of its capacity and main-  
309 taining all specific hygiene protocols); (iv) green (phase 4) is a partial opening phase, in which all services are  
310 allowed to open (limit of 60% of its capacity and maintaining all specific hygiene protocols); (v) blue (phase  
311 5) has only restrictions over events that generate large agglomeration of people. Restaurants, fitness centers,  
312 cultural activities, and beauty salons are allowed from phase 3. At phase 4, schools and universities can  
313 be opened with 35% of the classes occupied (Plano São Paulo, <https://www.saopaulo.sp.gov.br/planosp/>).  
314 These phases were attributed to each region of the State, defined according to a division of its healthcare  
315 system<sup>12</sup>. These regions, called Regional Health Departments (DRS, in portuguese), are each one represented  
316 by a major centralized city: Araraquara, Araçatuba, Baixada Santista, Barretos, Bauru, Campinas, Franca,  
317 São Paulo Metropolitan Area, Marília, Piracicaba, Presidente Prudente, Registro, Ribeirão Preto, São João  
318 da Boa Vista, São José do Rio Preto, Sorocaba, and Taubaté .

319 Figure 4 shows the temporal evolution of the incidence (in brown) and the  $R_t$  (in blue) for selected  
320 cities in São Paulo State. The relation between the transmission index and the social isolation index is also  
321 displayed (with a lag of seven days between them). The other colors (vertical bands) are associated with  
322 each moment of the São Paulo's Plan in each city. The peak of the incidence curve occurred on May 5 at São  
323 Paulo (with 6 new cases) on June 10 at Campinas (with 5.9 new cases), and on August 10 at Votuporanga  
324 (with 8.5 new cases). This pattern shows the spread of the disease from the metropolis of São Paulo to  
325 inner cities in a lower degree of urban hierarchy. Besides, less complex cities (less level of urban hierarchy  
326 compared to São Paulo) were not able to achieve a high social isolation index or keep it for a long time.  
327 The variance observed on the transmission rate can be related to the population density in each city which  
328 is respectively 7398.3, 1359.6, and 201.2 inhab/km<sup>2</sup> at São Paulo, Campinas, and Votuporanga. Although  
329 the incidence was higher at Votuporanga, the average absolute number of cases was 3.4 (from 1 to 11), 36.3  
330 (from 9 to 95), and 422.8 (from 161 to 986) in Votuporanga, Campinas, and São Paulo, respectively.

### 331 3.4 Relation between social isolation index and the speed of the disease dispersion

332 In this section, we study the relationship between social isolation index and how fast the disease spread over  
333 different geographic locations around the country. The enrolled cities satisfy one of the following criteria: (i)

334 is the capital of a state, (ii) is the first or second city of a state with a higher number of cases, (iii) belongs  
335 to São Paulo state and is among its cities with highest number of cases.

336 For each municipality, the smoothed curve of daily cases in the upward phase, that is, from March 15  
337 until the day when the maximum number of cases occurred, was considered. Then, the upward phase was  
338 divided into seven stages in the following way. First, we calculated the total number of infected people in this  
339 period (upward phase), divided it in half and marked the day in which such a number of cases was reached  
340 as the start of stage 7, which ends when the peak of cases is reached. Therefore, stage 7 represents the  
341 period contemplating the second half of the cases until the peak. Analogously, new successive divisions were  
342 made, minding the day when a corresponding half of accumulated cases was reached. In total, six divisions  
343 were made, creating 7 stages. In this way, stage 1 refers to period between March 15 and the occurrence of  
344 1.5625% of the cases in the upward phase; stage 2 refers to period between 1.5625% and 3.125% of it; and  
345 stages 3 to 6 correspond to periods between 3.125%-6.25%, 6.25%-12.5%, 12.5%-25%, 25%-50%, respectively,  
346 of cases in the upward phase (see Figure 5).

347 The length of these stages is an estimate of the speed of disease spreading. When efforts to stop or  
348 diminish the disease spread are implemented in one stage, one expects an increase in the length of later  
349 stages. Hence, finding a relationship between the efforts to control the disease spread, such as the social  
350 isolation index, and the length of these stages could be an efficient way of assessing the efficacy of the control  
351 measures.

352 In Table 2 we present, for each municipality (a total of 31 analyzed), the median of the social isolation  
353 index and the length of the disease spreading stages. The incidence was associated to the social isolation  
354 index considering a lag of seven days. The social isolation index at day  $t - 7$  is the average between the ones  
355 observed at  $t - 8$ ,  $t - 7$  and  $t - 6$ . In bold, are highlighted the values of the social isolation index above  
356 the third quartile (Q3) and the length of the stages ( $\Delta_i$  with  $i = 1, 2, \dots, 7$ ) which are above the respective  
357 median.

358 Comparing the length of stages 5, 6, and 7 with their respective medians, we see that 24 municipalities  
359 (77.4%) maintain the same behavior, that is, they have the length of stages 5, 6, and 7 above the median or  
360 below the median in all three stages. Also, the correlation coefficients between the length of these stages are  
361 0.773 between stages 5 and 6, 0.691 between stages 5 and 7, and 0.849 between stages 6 and 7. Due to the  
362 similarity of these stages, plus the fact that they correspond to 87.5% of all cases in the upward phase, our  
363 analysis will be restricted to stage 7.

364 Table 3 shows that a high social isolation index in stages 3 and 4, can slow the transmission of the disease  
365 in stage 7. From these 16 cities with length at stage 7 above the median, 12 (75%) of them had isolation  
366 above Q3 in stages 3 or 4. The four cities that did not had isolation above Q3 in these two stages were:  
367 Belo Horizonte, Guarulhos, Jundiaí and São Paulo. In the case of São Paulo, the length of the initial stages  
368 of disease spreading in this city was extremely short, indicating a fast initial dispersion of the disease. A  
369 social isolation index above Q3 was only observed in stages 5 and 6. This late high social isolation index may  
370 decrease the speed of disease, leading to the length of the final stages above of median. The city of Jundiaí  
371 had social isolation index above Q3 only in stages 1, 6 and 7, but presented a social isolation index above  
372 median in stages 2, 3 and 5. Therefore, except for stage 4, which was short (7 days), Jundiaí presented a  
373 social isolation index above the median in all the stages, which may have contributed to the reduction of the  
374 speed of disease transmission. On the other hand, we have the city of Guarulhos, that had a social isolation  
375 index above or equal the median in the stages 4, 5 and 6, and Belo Horizonte that had social isolation index

376 above of median in stage 4 and really close to the median in stage 5, which may have contributed to a  
377 duration superior than the median in the stage 7.

378 Table 2 and 3 also present the cities at which the stage 7 length was below the median. From these  
379 15 cities, 11 (73.3%) did not have social isolation index above Q3 in stages 3 or 4. The four cities which  
380 presented social isolation index above Q3 were: Aracaju, Boa Vista, João Pessoa and Salvador. Note that  
381 João Pessoa, Aracaju and Salvador had length of stage 7 equal to 19, 23 and 22 days, respectively, values  
382 which are close to the median 24. The city Boa Vista had social isolation index above Q3 in stage 3, however,  
383 it had social isolation index below first quartile (Q1) in stages 4, 5 and 6, which has contributed for the short  
384 duration of 18 days obtained in stage 7.

385 The city that peaked faster was Manaus (35 days), followed by Belém (38 days), Recife and Rio de Janeiro  
386 (45 days), São Luiz (46 days), Duque de Caxias and Fortaleza (50 days). Among these cities, we can observe  
387 that Fortaleza kept the social isolation index above the median in all the stages. This bad performance to  
388 control the epidemics despite the high social isolation index can be related to the fact that this city is the  
389 main entrance of individuals coming from outside of the country to the North and Northwest of Brazil. Also  
390 the bad performance of Duque de Caxias can be explained by the fact that they are in the region of Rio de  
391 Janeiro influence.

### 392 3.5 Daily number of cases and the social isolation index during the upward phase

393 In this section, we evaluate, in detail, how the daily incidence is related to the social isolation index during  
394 the upward phase of the epidemic. Here, we divided the upward phase of the epidemiological curve into  
395 intervals. In each interval, we have either an increase or a decrease of the incidence. We defined an increase  
396 (or decrease) in the incidence if it is increasing (or decreasing) on the extreme points of the interval and we  
397 have at upmost two consecutive decreases (or increases) in the interior of the interval. The starting point, for  
398 each epidemic curve, corresponds to the calendar day at which 8.113 accumulated cases per 100k inhabitants  
399 were achieved. This threshold was chosen based on the epidemic growth observed in São Paulo city since this  
400 value is equivalent to 1000 accumulated cases in this city. In this analysis, we consider all cities not under  
401 the direct influence of São Paulo<sup>†</sup>, with  $\Delta_7$  above or equal to the median, and social isolation index above  
402 Q3 in stages 3 or 4 (see Table 3), which were the cities with earlier high isolation, and a slower stage 7, which  
403 could be caused in part by this high isolation.

404 As an example, we show in Figure 6 the daily incidence for the city of Porto Alegre where the days in  
405 which the incidence increases or decreases are highlighted in different colors. Besides the temporal evolution  
406 of the incidence, we plotted the daily social isolation index against the daily incidence. Several features can  
407 be observed in this figure. A higher social isolation index was observed at the beginning of the epidemic,  
408 which seems to have promoted an efficient control of the incidence. With time, the isolation index decreased,  
409 which may have caused the epidemic curve to oscillate as can be seen by the large number of colors in the  
410 figure until the 70th day. Below some threshold of the social isolation index (around 0.16) a sharp vertical  
411 increase of the incidence can be seen, that is the days in blue. The increase of the social isolation index after  
412 this explosion of cases does not seem to control of the epidemic. This is an indicative that maybe if the social  
413 isolation index was kept 0.16 unit above of the reference value measured in February, Porto Alegre could  
414 have avoided the explosion of cases observed after the 70th day.

415 The dispersion plot between the daily incidence and social isolation, colored according to the increase or  
416 decrease in cases, is presented in Figures 7 and 8. Five of those cities are Metropolises, three are Regional

<sup>†</sup>Hence we excluded Jundiá and São Paulo from this analysis.

417 Capitals A and four are Regional Capitals B. A similar behavior was observed for the cities considered which  
418 have implemented some control measures in stages 3 or 4 (section 3.4) and are not under the influence of  
419 a Metropolis that did not do some mitigation control in these stages. For all these cities there seems to be  
420 a threshold, which may vary from city to city, where a decrease on the isolation index triggers an abrupt  
421 increase on the daily incidence. This phenomenon is characterized by the *L*-shape of the dispersion between  
422 the isolation index and daily incidence, where the horizontal part of the *L* refers to a period when higher  
423 isolation may have held the incidence low, and the vertical part of the *L* refers to a period when either the  
424 variation on the isolation does not affect the incidence or the decrease on the isolation below the threshold  
425 was followed by an explosion of cases.

426 The cities Teresina and Porto Velho, where the *L*-shape is not observed, are in the region of influence of  
427 Fortaleza and Manaus, respectively, Metropolises that did not implemented mitigation strategies capable of  
428 increasing significantly social isolation, what could have caused the mitigation on these cities to not properly  
429 function. Indeed, Teresina has sustained an increase on the incidence although having a high social isolation  
430 index during the whole upward phase.

431 Among the Metropolises, the number of monotone intervals varied between 2 and 5. Goiânia, the  
432 Metropolis in Midwest, had 2 intervals, Campinas, the Metropolis in the Southeast, had 3 intervals and  
433 the Metropolises in the South region had 3, 4 and 5 intervals (Curitiba, Porto Alegre and Florianópolis,  
434 respectively). The HDI values of these cities, in the order they were mentioned, are 0.799, 0.805, 0.823, 0.805  
435 and 0.847. Those localized in the South region presented a greater number of intervals, indicating that the  
436 adopted measures in these cities succeeded on breaking the increasing sequence. In the case of Florianópolis,  
437 since a major part of its territory in an island, other geographical feature could have contributed to control  
438 the disease spreading.

439 For the Regional Capitals A, the numbers of intervals varied between 2 and 7. Teresina, localized in the  
440 Northeast region, had 2 intervals, while Cuiabá and Campo Grande, both in the Midwest region, had 5 and 7  
441 intervals, respectively. The HDI of these cities, in the order they were mentioned, are 0.751, 0.785 and 0.784.  
442 In this hierarchy, there are only capitals from Northeast and Midwest regions and the latter ones presented  
443 better results.

444 Finally, for the 4 Regional Capitals B, the number of intervals varied between 2 and 5. Porto Velho,  
445 localized in the North region, had 2 intervals, while Palmas, from Midwest region and Londrina and Caxias  
446 do Sul, both from the South region, had 5 intervals. The HDI of these cities, in the order they were mentioned,  
447 are 0.736, 0.788, 0.778 and 0.782. The performance of Palmas on controlling the disease's spreading could be  
448 explained by the influence of Goiânia over it. The Capital from the North region presented the worst result,  
449 that is, lower number of intervals, while Midwest and South regions presented the best results. This detailed  
450 analysis, considering the number of intervals, shows again the importance of the urban hierarchy, HDI and  
451 regional factors in the spreading of the disease.

452 Analyzing the results of each hierarchy, it seems that the number of intervals increases as the HDI  
453 increases (correlation coefficients 0.90, 0.98 and 0.76 for Regional Capitals A, Regional Capitals B and  
454 Metropolises, respectively). Although there seems to exist a threshold of the social isolation index below  
455 which an explosion of cases occurs, its value vary among the cities. Therefore, besides human mobility, other  
456 factors are certainly influencing the velocity of the disease's spread.

## 457 **4 Discussion**

458 In this work, we explored some variables that can be responsible for the failure or success of the mitigation  
459 strategies to halt the spreading of the COVID-19 epidemic in the Brazilian territory. In particular, we  
460 focused on social isolation, since during this epidemic period it was one of the few strategies available,  
461 besides prophylactic measures such as the use of masks and personal hand-hygiene. Our analysis sought to  
462 associate two sets of temporal series, the social isolation index, and the incidence, exploring the relationship  
463 between these two data sets in different cities in Brazil looking for patterns and what can explain them.

464 The first thing that we could notice is that there is no direct and simple relationship between the social  
465 isolation index and the incidence. In fact, the evolution of the disease is driven by multiple factors. Besides  
466 the social isolation index, the urban hierarchy, the human development index and human and trade mobility  
467 together can explain the behavior of the epidemic, as shown in Sections 3.1-3.3. Among those patterns, we  
468 could find a relation between the starting time of the implementation of the mitigation strategy and the  
469 time at which the peak was reached. Namely, the cities that successfully implemented the social isolation  
470 strategy in stages 3 or 4 reached the peak of incidence later. Moreover, among those cities, a threshold on  
471 the social isolation index could be found. This threshold holds at the begging of the epidemic and promotes  
472 an efficient control of the incidence. With time, the social isolation index decreased, and the number of cases  
473 sharply increased in such a way that high isolation measures did not work anymore.

474 There are some limitations related to the data used here. The bias of the daily isolation index is not  
475 controlled. On top of that, the daily incidence data cannot capture the asymptomatic cases. Despite these  
476 limitations, we successfully pointed out some patterns related to these data. We also could hypothesize that  
477 at least two patterns of disease dispersion can be found in Brazil<sup>29,35,28</sup>: a hierarchical one at Southwest  
478 region (like São Paulo state)<sup>15</sup> and a local diffusion type at Northeast (like Ceará state). We also hypothesize  
479 that the epidemic is synchronized in each Metropolis<sup>17,39</sup>. These are relevant topics to be pursued.

## 480 **Resource Availability**

481 **Lead Contact: PSP. Data and Code Availability:** The datasets and codes generated during this study  
482 are available at the GitHub repository Mdyn <https://github.com/pedrospeixoto/mdyn>.

## 483 **Acknowledgments**

484 PSP was supported by grant # 16/18445-7, São Paulo Research Foundation (FAPESP) and by grant  
485 #301778/2017-5, National Council for Scientific and Technological Development (CNPq). The research  
486 of CPF is supported by grant #2019/22157-5, São Paulo Research Foundation (FAPESP) and by grant  
487 #302984/2020-8, National Council for Scientific and Technological Development (CNPq). DM was supported  
488 by the National Council for Scientific and Technological Development (CNPq) during the development of  
489 this paper.

## 490 **Author Contributions**

491 Data Curation, Formal Analysis and Investigation were mainly performed by CPF, MPM and CMP. All  
492 other aspects of the paper had active participation of all authors, including conceptualization, methodology,  
493 discussions, writing and review.



494 **Declaration of Interests**

495 The authors declare no competing financial or non-financial interests.

496 **References**

- 497 1. Akkouchi, M. (2008). On the convolution of exponential distributions. *Journal of the Chungcheong*  
498 *Mathematical Society*, 21(4):501–510. 5
- 499 2. Apple (2021). COVID-19 Mobility Trends Reports. <https://covid19.apple.com/mobility>. Accessed:  
500 29th March 2021. 4
- 501 3. Ball, F., Britton, T., House, T., Isham, V., Mollison, D., Pellis, L., and Tomba, G. S. (2015). Seven  
502 challenges for metapopulation models of epidemics, including households models. *Epidemics*, 10:63–67. 2
- 503 4. Bastos, L. S., Niquini, R. P., Lana, R. M., Villela, D. A., Cruz, O. G., Coelho, F. C., Codeço, C. T.,  
504 and Gomes, M. F. (2020). Covid-19 and hospitalizations for sari in brazil: a comparison up to the 12th  
505 epidemiological week of 2020. *Cadernos de Saúde Pública*, 36:e00070120. 5
- 506 5. Buss, L. F., Prete, C. A., Abraham, C. M., Mendrone, A., Salomon, T., de Almeida-Neto, C., França,  
507 R. F., Belotti, M. C., Carvalho, M. P., Costa, A. G., et al. (2021). Three-quarters attack rate of sars-cov-2  
508 in the brazilian amazon during a largely unmitigated epidemic. *Science*, 371(6526):288–292. 4
- 509 6. Candido, D. S., Claro, I. M., de Jesus, J. G., Souza, W. M., Moreira, F. R., Dellicour, S., Mellan, T. A.,  
510 Du Plessis, L., Pereira, R. H., Sales, F. C., et al. (2020). Evolution and epidemic spread of sars-cov-2 in  
511 brazil. *Science*, 369(6508):1255–1260. 4
- 512 7. Chang, S., Pierson, E., Koh, P. W., Gerardin, J., Redbird, B., Grusky, D., and Leskovec, J. (2021).  
513 Mobility network models of covid-19 explain inequities and inform reopening. *Nature*, 589(7840):82–87. 2
- 514 8. Cot, C., Cacciapaglia, G., and Sannino, F. (2021). Mining google and apple mobility data: temporal  
515 anatomy for covid-19 social distancing. *Scientific reports*, 11(1):1–8. 2
- 516 9. Cota, W., Soriano-Paños, D., Arenas, A., Ferreira, S. C., and Gómez-Gardeñes, J. (2021). Infectious dis-  
517 ease dynamics in metapopulations with heterogeneous transmission and recurrent mobility. *arXiv preprint*  
518 *arXiv:2102.10614*. 2
- 519 10. Croda, J., Oliveira, W. K. d., Frutuoso, R. L., Mandetta, L. H., Baia-da Silva, D. C., Brito-Sousa, J. D.,  
520 Monteiro, W. M., and Lacerda, M. V. G. (2020). Covid-19 in brazil: advantages of a socialized unified  
521 health system and preparation to contain cases. *Revista da Sociedade Brasileira de Medicina Tropical*, 53.  
522 2
- 523 11. da Saúde, S.-M. (2020). Srag 2020 - banco de dados de síndrome respiratória aguda grave - incluindo  
524 dados da covid-19. <https://opendatasus.saude.gov.br/dataset/activity/bd-srag-2020>. Accessed:  
525 15th November 2020. 4
- 526 12. de Almeida, G. B., Pronunciate, M., Grotto, R. M. T., Pugliesi, E. A., Guimarães, R. B., Vilches, T. N.,  
527 Coutinho, R. M., de Castro Catão, R., Ferreira, C. P., and Fortaleza, C. M. C. B. (2020). Two hundred  
528 days of covid-19 in são paulo state, brazil. *Epidemiology & Infection*, 148. 9
- 529 13. de Mello Freitas, F. T. (2013). Sentinel surveillance of influenza and other respiratory viruses, brazil,  
530 2000–2010. *The Brazilian Journal of Infectious Diseases*, 17(1):62–68. 7
- 531 14. Dias, F. L., Assumpção, M., Peixoto, P. S., Bianchi, M. B., Collaço, B., and Calhau, J. (2020). Using  
532 seismic noise levels to monitor social isolation: An example from rio de janeiro, brazil. *Geophysical Research*  
533 *Letters*, 47(16):e2020GL088748. 4



- 534 15. Fortaleza, C. M. C. B., Guimarães, R. B., Catão, R. d. C., Ferreira, C. P., Berg de Almeida, G.,  
535 Nogueira Vilches, T., and Pugliesi, E. (2021). The use of health geography modeling to understand early  
536 dispersion of covid-19 in são paulo, brazil. *PLoS one*, 16(1):e0245051. 13
- 537 16. Fortaleza, C. M. C. B., Guimarães, R. B., de Almeida, G. B., Pronunciate, M., and Ferreira, C. P. (2020).  
538 Taking the inner route: spatial and demographic factors affecting vulnerability to covid-19 among 604 cities  
539 from inner são paulo state, brazil. *Epidemiology & Infection*, 148. 9
- 540 17. Geoghegan, J. L., Saavedra, A. F., Duchêne, S., Sullivan, S., Barr, I., and Holmes, E. C. (2018). Con-  
541 tinental synchronicity of human influenza virus epidemics despite climactic variation. *PLoS pathogens*,  
542 14(1):e1006780. 13
- 543 18. Giordano, G., Blanchini, F., Bruno, R., Colaneri, P., Filippo, A. D., Matteo, A. D., and Colaneri, M.  
544 (2020). Modelling the covid-19 epidemic and implementation of population-wide interventions in italy.  
545 *Nature Medical*, 26:855–860. 2
- 546 19. Google (2021). Google COVID-19 Community Mobility Reports. [https://www.google.com/covid19/  
547 mobility/](https://www.google.com/covid19/mobility/). Accessed: 29th March 2021. 4
- 548 20. Grantz, K. H., Meredith, H. R., Cummings, D. A., Metcalf, C. J. E., Grenfell, B. T., Giles, J. R., Mehta,  
549 S., Solomon, S., Labrique, A., Kishore, N., et al. (2020). The use of mobile phone data to inform analysis  
550 of covid-19 pandemic epidemiology. *Nature communications*, 11(1):1–8. 2
- 551 21. Grotto, R. M. T., Lima, R. S., de Almeida, G. B., Ferreira, C. P., Guimarães, R. B., Pronunciate, M.,  
552 Azevedo, E., de Castro Catão, R., and Fortaleza, C. M. C. B. (2020). Increasing molecular diagnostic  
553 capacity and covid-19 incidence in brazil. *Epidemiology & Infection*, 148. 5
- 554 22. Guimarães, R. B., CATÃO, R. D. C., MARTINUCI, O. D. S., PUGLIESI, E. A., and Matsumoto, P.  
555 S. S. (2020). O raciocínio geográfico e as chaves de leitura da covid-19 no território brasileiro. *Estudos  
556 Avançados*, 34(99):119–140. 7
- 557 23. Hâncean, M.-G., Slavinec, M., and Perc, M. (2021). The impact of human mobility networks on the  
558 global spread of covid-19. *Journal of Complex Networks*, 8(6). Accessed: 09th April 2021. 1
- 559 24. IBGE, R. d. J. (2018). Regiões de influência das cidades. *IBGE. RJ*. 5
- 560 25. Inloco (2021a). Mapa brasileiro da COVID-19. <https://mapabrasileirodacovid.inloco.com.br/>.  
561 Accessed: 29th March 2021. 4
- 562 26. Inloco (2021b). Política de Privacidade: Inloco x COVID-19. [https://www.incognia.com/pt/  
563 politicas/covid](https://www.incognia.com/pt/politicas/covid). Accessed: 29th March 2021. 4
- 564 27. IPRI (2017). As 15 maiores economias do mundo. [https://www.funag.gov.br/ipri/index.php/  
565 o-ipri/47-estatisticas/94-as-15-maiores-economias-do-mundo-em-pib-e-pib-ppp](https://www.funag.gov.br/ipri/index.php/o-ipri/47-estatisticas/94-as-15-maiores-economias-do-mundo-em-pib-e-pib-ppp). Accessed:  
566 4th April 2021 - Instituto de Pesquisas de Relacoes Internacionais. 2
- 567 28. Kuebart, A. and Stabler, M. (2020). Infectious diseases as socio-spatial processes: The covid-19 outbreak  
568 in germany. *Tijdschrift voor economische en sociale geografie*, 111(3):482–496. 13
- 569 29. Kuo, C.-L. and Fukui, H. (2007). Geographical structures and the cholera epidemic in modern japan:  
570 Fukushima prefecture in 1882 and 1895. *International Journal of Health Geographics*, 6(1):1–10. 13
- 571 30. McGough, S. F., Johansson, M. A., Lipsitch, M., and Menzies, N. A. (2020). Nowcasting by bayesian  
572 smoothing: A flexible, generalizable model for real-time epidemic tracking. *PLoS computational biology*,  
573 16(4):e1007735. 5
- 574 31. Nussbaumer-Streit, B., Mayr, V., Dobrescu, A. I., Chapman, A., Persad, E., Klerings, I., Wagner, G.,  
575 Siebert, U., Christof, C., Zachariah, C., and Gartlehner, G. (2020). Quarantine alone or in combination  
576 with other public health measures to control covid-19: a rapid review. *Cochrane Database of Systematic*

- 577 *Reviews*, Issue 4. Art. No.: CD013574. 2
- 578 32. Peixoto, P. S., Marcondes, D., Peixoto, C., and Oliva, S. M. (2020). Modeling future spread of infections  
579 via mobile geolocation data and population dynamics. an application to covid-19 in brazil. *PloS one*,  
580 15(7):e0235732. 4
- 581 33. Sabino, E. C., Buss, L. F., Carvalho, M. P. S., Prete Jr, C. A., Crispim, M. A. E., Fraiji, N. A., Pereira,  
582 R. H. M., Parag, K. V., Peixoto, P. d. S., Kraemer, M. U. G., Oikawa, M. K., Salomon, T., Cucunuba,  
583 Z. M., Castro, M. C., Souza Santos, A. A., Nascimento, V. H., Pereira, H. S., Ferguson, N. M., Pybus,  
584 O. G., Kucharski, A., Busch, M. P., Dye, C., and Faria, N. R. (2021). Resurgence of covid-19 in manaus,  
585 brazil, despite high seroprevalence. *The Lancet*, 397(10273):452–455. 4
- 586 34. SafeGraph (2021). Social Distancing Metrics. [https://docs.safegraph.com/docs/](https://docs.safegraph.com/docs/social-distancing-metrics)  
587 [social-distancing-metrics](https://docs.safegraph.com/docs/social-distancing-metrics). Accessed: 29th March 2021. 4
- 588 35. Schærström, A. (2014). Disease diffusion. *The Wiley Blackwell Encyclopedia of Health, Illness, Behavior,*  
589 *and Society*, pages 411–416. 13
- 590 36. Wallinga, J. and Lipsitch, M. (2007). How generation intervals shape the relationship between growth  
591 rates and reproductive numbers. *Proceedings of the Royal Society B: Biological Sciences*, 274(1609):599–  
592 604. 5
- 593 37. World Health Organization, . J. . (2020). Advice on the use of masks in the context of covid-19:interim  
594 guidance. <https://apps.who.int/iris/handle/10665/332293>.CCBY-NC-SA3.0IGO. Accessed: 01th  
595 April 2021. 2
- 596 38. Yechezkel, M., Weiss, A., Rejwan, I., Shahmoon, E., Ben-Gal, S., and Yamin, D. (2021). Human mobility  
597 and poverty as key drivers of covid-19 transmission and control. *BMC public health*, 21(1):1–13. 2
- 598 39. Zheng, M., Zhao, M., Min, B., and Liu, Z. (2017). Synchronized and mixed outbreaks of coupled recurrent  
599 epidemics. *Scientific reports*, 7(1):1–11. 13
- 600 40. Zhou, Y., Xu, R., Hu, D., Yue, Y., Li, Q., and Xia, J. (2020). Effects of human mobility restrictions on  
601 the spread of covid-19 in shenzhen, china: a modelling study using mobile phone data. *The Lancet Digital*  
602 *Health*, 2(8):e417–e424. 2

603 **A Tables**

**Table 1** Percentage variation of the social isolation index and the transmission index per period. From the first to the fourth, period means week. In the case of Fortaleza and Recife, the fifth period is also a week. For all of them, the second week corresponds to the lockdown. In all cases, the last period is counted until the first minimum of the incidence curve after the lockdown period is finished. A lag of seven days between the isolation index and the transmission index was considered.

São Luis		Belém		Fortaleza		Recife		Period
isol. index	trans. index	isol. index	trans. index	isol. index	trans. index	isol. index	trans. index	-
-0.0031	0.0176	-0.0164	-0.1907	-0.0196	-0.1368	0.0484	-0.0758	1
<b>0.1134</b>	<b>-0.3595</b>	<b>0.0318</b>	<b>-0.2165</b>	<b>0.1303</b>	<b>-0.2813</b>	<b>0.1529</b>	<b>-0.1278</b>	<b>2</b>
-0.0533	-0.1035	0.0115	-0.1293	-0.0471	-0.2425	-0.1080	0.0300	3
-0.2704	-0.1086	-0.1722	-0.1130	-0.0927	-0.1462	-0.1995	-0.0410	4
-0.1716	-0.0513	-0.1800	-0.0945	-0.1632	0.0986	-0.1562	-0.0758	5
-	-	-	-	-0.1544	0.0574	-0.0545	-0.0058	6

**Table 2** Median of social isolation index and length of the stages ( $\Delta_i$  with  $i = 1, 2, 3, 4, 5, 6, 7$ ) of the upward phase for each municipality. The stage 1 refers to period between March 15 and the occurrence of 1.5625 % of the cases in the upward phase and the stage 2 refers to period between 1.5625% and 3.125% of it. The stages 3 to 7 correspond to periods between 3.125%-6.25%, 6.25%-12.5%, 12.5%-25%, 25%-50% and 50%-100% of cases in the upward phase, respectively.

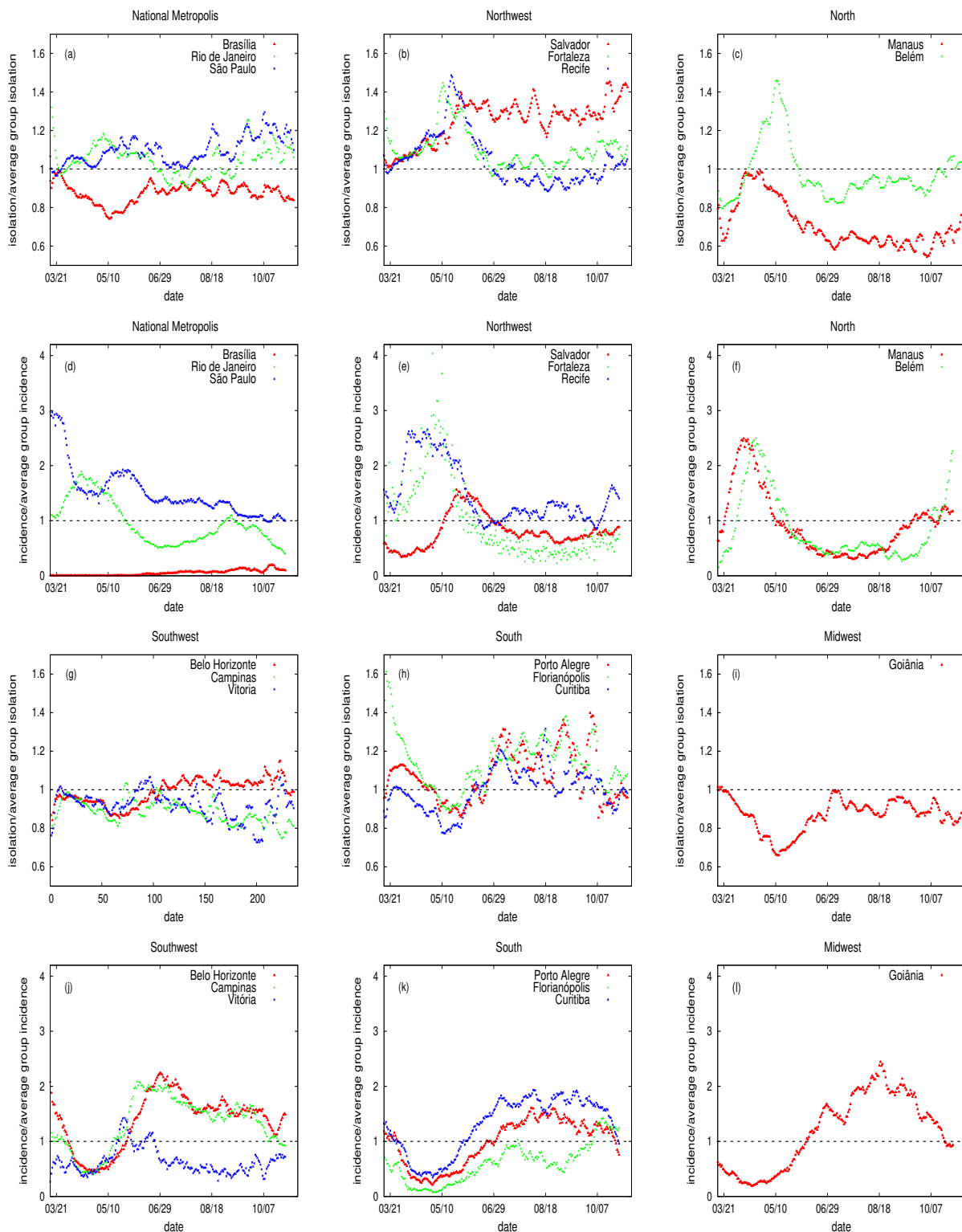
City	Median of Social Isolation Index							Length of the stage $i$						
	Stage 1	Stage 2	Stage 3	Stage 4	Stage 5	Stage 6	Stage 7	$\Delta_1$	$\Delta_2$	$\Delta_3$	$\Delta_4$	$\Delta_5$	$\Delta_6$	$\Delta_7$
Aracaju	0.0452	<b>0.1075</b>	<b>0.2833</b>	0.2241	0.2000	0.1814	0.1900	6	4	12	15	16	17	23
Belém	0.0605	<b>0.1120</b>	0.0986	0.2401	0.2432	0.2051	<b>0.2376</b>	5	3	6	5	5	7	7
Belo Horizonte	0.0703	0.0180	0.0811	0.2658	0.2308	0.1781	0.1332	2	3	4	11	24	35	30
Boa Vista	0.0293	0.0797	<b>0.2375</b>	0.1509	0.1020	0.1329	0.1870	3	10	10	13	16	14	18
Campinas	0.0526	0.0893	0.1328	<b>0.2984</b>	0.2404	0.2025	0.1702	4	4	7	14	25	26	31
Campo Grande	0.0304	0.0895	<b>0.2579</b>	0.1921	0.1258	0.1065	0.1107	5	4	10	26	48	32	43
Caxias do Sul	0.0142	0.0920	0.0948	<b>0.3095</b>	0.1959	0.1287	0.1175	3	4	5	14	24	31	35
Cuiabá	0.0710	<b>0.2483</b>	<b>0.1993</b>	0.1395	0.1258	0.1349	0.1424	11	9	24	23	19	28	49
Curitiba	<b>0.0723</b>	0.0246	0.0884	<b>0.2907</b>	0.2363	0.1700	0.1519	3	2	6	11	23	36	34
Duque de Caxias	0.0628	0.0246	0.0870	0.1421	0.2277	0.1903	0.2059	3	2	4	6	8	10	17
Florianópolis	0.0716	0.0251	0.1023	<b>0.3920</b>	<b>0.2765</b>	0.1809	0.1553	3	2	6	8	33	36	30
Fortaleza	0.0694	0.0680	0.1233	0.2717	<b>0.3008</b>	<b>0.2670</b>	<b>0.2552</b>	4	2	3	8	10	11	12
Goiânia	0.0696	<b>0.2809</b>	<b>0.2234</b>	0.1727	0.1323	0.1292	0.1302	9	10	20	23	26	26	45
Guarulhos	0.0372	0.0379	0.0987	0.2740	0.2339	0.2064	0.1655	4	3	6	10	17	25	46
João Pessoa	0.0545	0.0525	0.0974	<b>0.3032</b>	0.2401	0.2361	0.2141	4	2	6	12	15	12	19
Jundiaí	<b>0.1212</b>	0.0864	0.1563	0.1434	0.2605	<b>0.2786</b>	<b>0.2893</b>	4	2	3	7	19	24	28
Londrina	0.0249	0.0845	0.0878	<b>0.2942</b>	0.2309	0.1361	0.1180	5	3	6	9	23	32	43
Manaus	<b>0.0798</b>	0.0450	0.1149	0.1020	0.2191	<b>0.2372</b>	<b>0.2479</b>	3	2	3	4	6	7	10
Natal	0.0570	0.0728	0.1160	0.2601	0.2239	0.1960	0.1874	4	3	9	16	16	15	19
Palmas	0.0347	0.0466	<b>0.2021</b>	0.1622	0.1260	0.0951	0.0901	3	6	10	21	15	37	48
Porto Alegre	<b>0.0793</b>	0.0193	0.1251	<b>0.3402</b>	<b>0.3043</b>	0.2264	0.1926	3	2	4	9	24	41	37
Porto Velho	<b>0.1069</b>	<b>0.2608</b>	<b>0.2196</b>	0.2119	0.1962	0.1731	0.1656	13	3	8	9	13	17	24
Recife	<b>0.0751</b>	0.0333	0.1253	0.2593	<b>0.3255</b>	<b>0.2820</b>	<b>0.2937</b>	3	2	4	8	7	8	13
Rio Branco	0.0499	<b>0.1045</b>	0.0983	0.2461	0.2114	0.1979	0.1886	6	2	5	6	8	12	19
Rio de Janeiro	0.0664	0.0241	0.0748	0.1510	<b>0.2900</b>	<b>0.2472</b>	<b>0.2476</b>	2	2	4	6	8	9	14
Salvador	0.0678	<b>0.1030</b>	<b>0.2802</b>	0.2872	<b>0.2677</b>	<b>0.2381</b>	<b>0.2385</b>	4	5	9	13	13	16	22
São Luis	<b>0.0840</b>	0.0437	0.0941	0.2095	0.2525	0.2135	<b>0.2384</b>	3	3	5	7	6	9	13
São Paulo	<b>0.0720</b>	0.0399	0.0182	0.0967	<b>0.2673</b>	<b>0.2709</b>	0.2286	1	2	2	4	9	17	24
Sobral	0.0515	<b>0.0985</b>	0.1989	0.2720	0.2161	0.2031	0.1795	6	4	5	14	10	11	10
Teresina	0.0582	0.0632	0.1018	<b>0.3089</b>	0.2433	0.2110	0.2137	4	3	6	15	19	18	26
Vitória	0.0312	0.0595	0.1037	0.2625	<b>0.3015</b>	<b>0.2572</b>	0.2127	4	1	3	8	11	19	22
Median	0.0628	0.0680	0.1149	0.2593	0.2339	0.2025	0.1886	4	3	6	10	16	17	24
3rd Quartile	<b>0.0718</b>	<b>0.0953</b>	<b>0.1991</b>	<b>0.2890</b>	<b>0.2639</b>	<b>0.2367</b>	<b>0.2331</b>	5	4	8.5	14	23	29.5	34.5

**Table 3** Distribution of municipalities according to social isolation index and disease transmission speed. The stage 1 refers to period between March 15 and the occurrence of 1.5625 % of the cases in the upward phase and the stage 2 refers to period between 1.5625% and 3.125% of it. The stages 3 to 7 correspond to periods between 3.125%-6.25%, 6.25%-12.5%, 12.5%-25%, 25%-50% and 50%-100% of cases in the upward phase, respectively.  $\Delta_7$  is the length of stage 7 and  $Q_3$  is the third quartile.

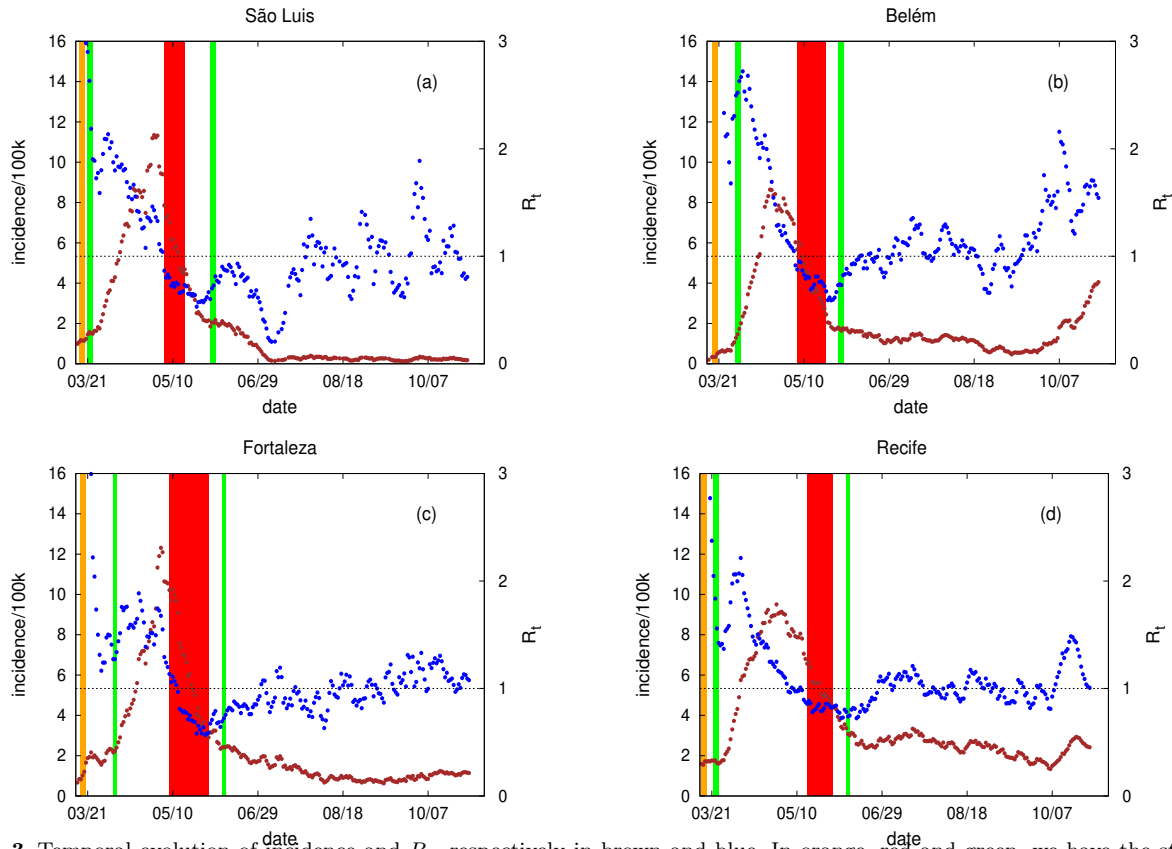
	<b>Social Isolation Index above Q3</b>	
	<b>Stages 3 or 4</b>	<b>Stages 1, 2, 5, 6 or 7</b>
Municipalities with $\Delta_7$ below or equal to median	Aracaju Boa Vista João Pessoa Salvador	Belém Fortaleza Manaus Recife Rio Branco Rio de Janeiro São Luís Sobral Vitória
Municipalities with $\Delta_7$ above or equal to median	Campinas Campo Grande Caxias do Sul Cuiabá Curitiba Florianópolis Goiânia Londrina Palmas Porto Alegre Porto Velho Teresina	Jundiaí São Paulo

\*The municipalities of Belo Horizonte, Duque de Caxias, Guarulhos and Natal did not have an isolation index above the third quartile at any stage

604 **B Figures**

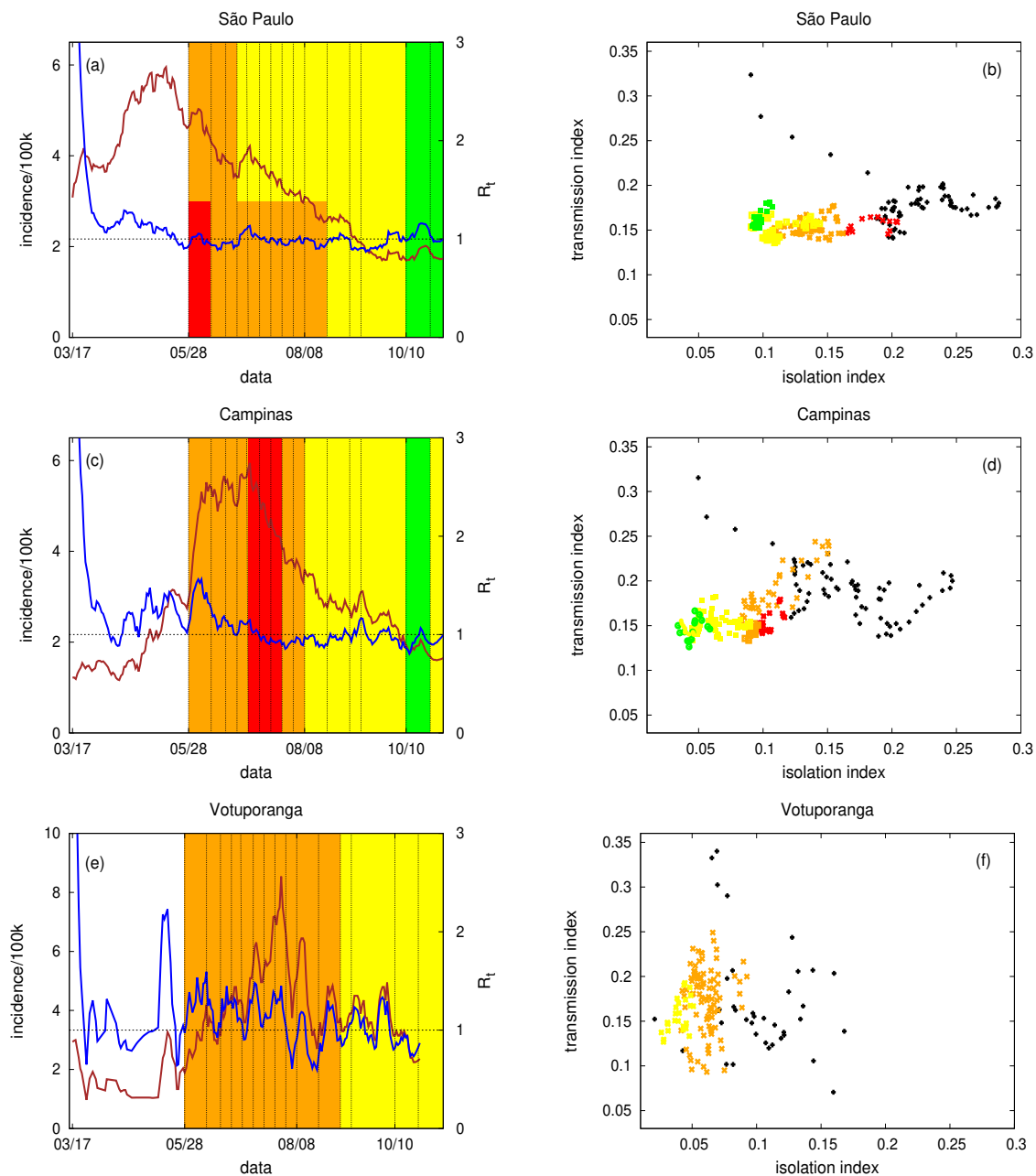


**Fig. 2** In (a-c), (g-i) the daily ratio between the social isolation index and its respectively daily average. In (d-f) and (j-l) the daily incidence and its respectively daily average. The average was calculated considering the main cities that represent each Metropolis. The date corresponds to the day of the first symptoms. The dashed horizontal line shows when this ratio is equal to 1.

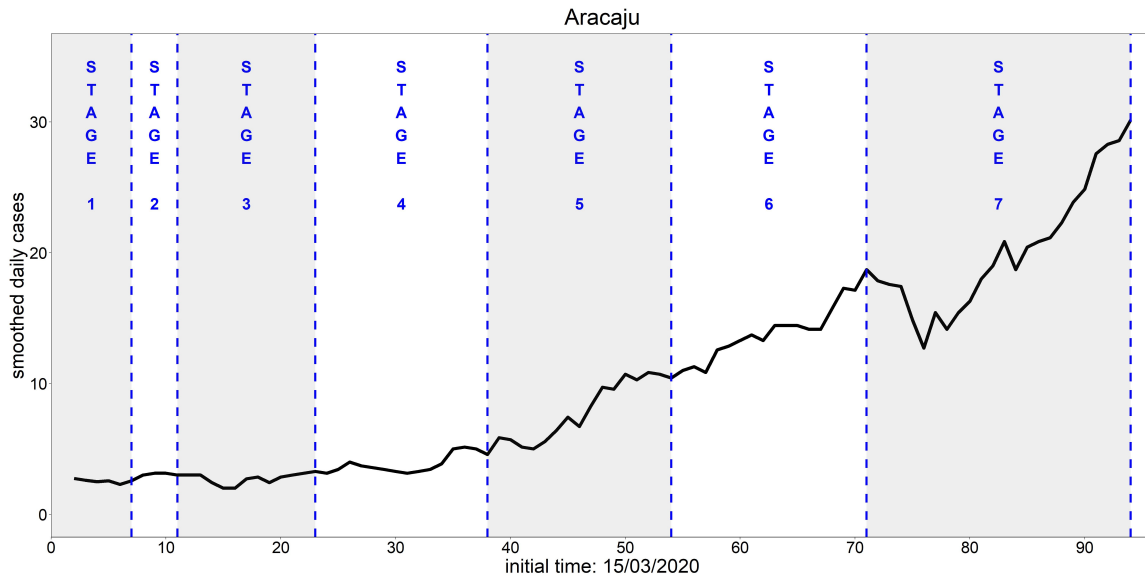


**Fig. 3** Temporal evolution of incidence and  $R_t$ , respectively in brown and blue. In orange, red and green, we have the start of control measurements, the lockdown and some degree of flexibilization, respectively. In (a) we have São Luís, (b) Belém, (c) Fortaleza, and (d) Recife. The date corresponds to the day of the first symptoms. The dashed horizontal line is drawn for  $R_t = 1$ .

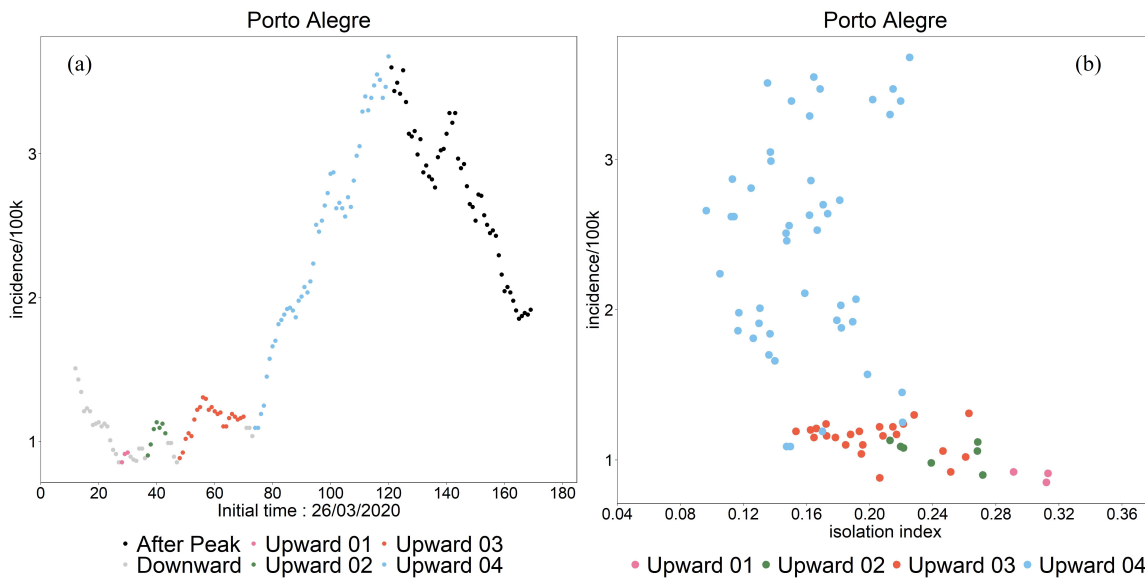




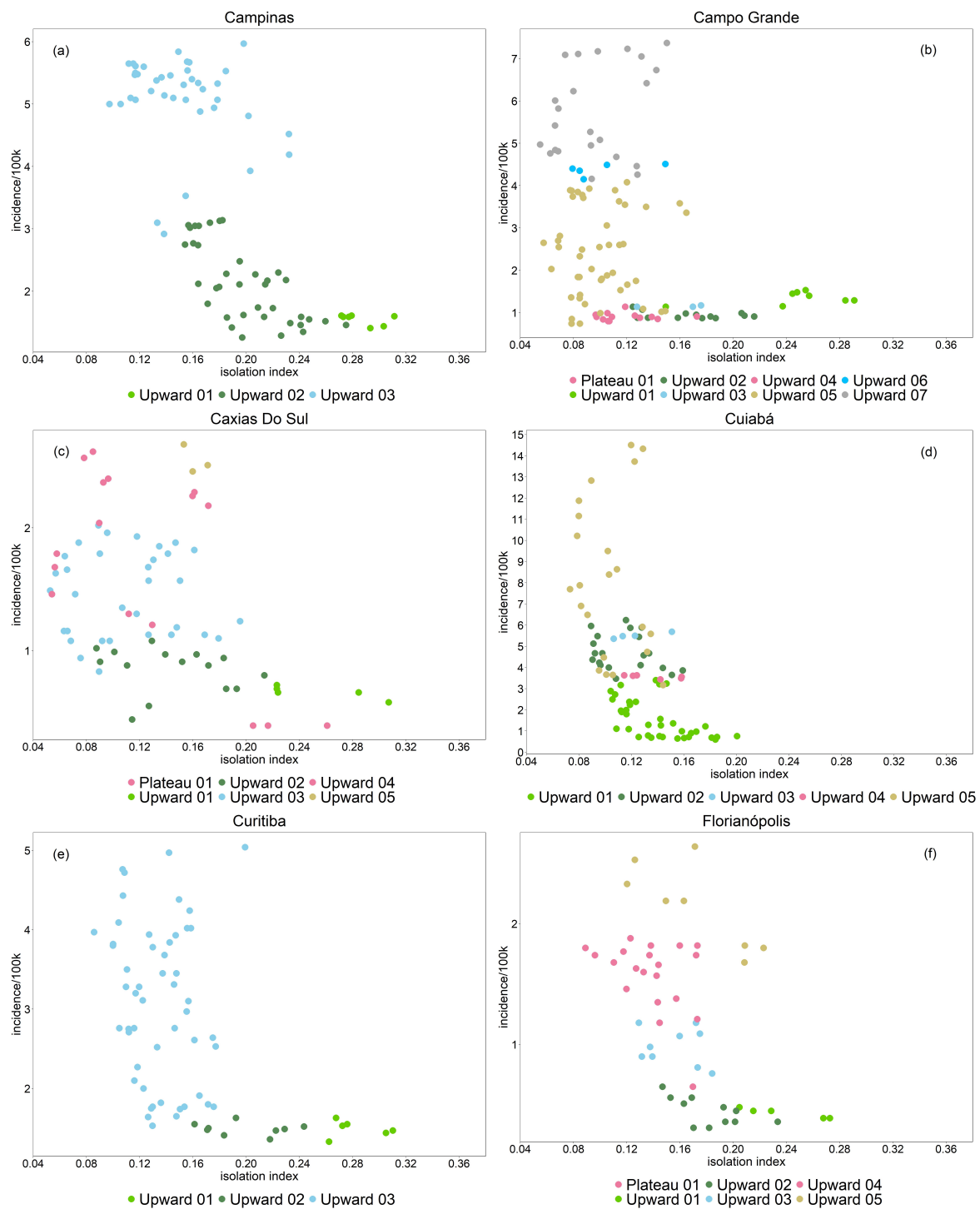
**Fig. 4** São Paulo (DRS I), Campinas (DRS XII), and Votuporanga (DRS XV). In (a), (c), (e) the temporal evolution of incidence and  $R_t$ , respectively in brown and blue. In (b), (d), (f) the isolation index versus the transmission index (with a lag of seven days between them). The colors in all panels represent the levels of São Paulo plan. The date corresponds to the day of the first symptoms. The (daily social) isolation index was subtracted from the average value observed from February 1 to February 15, and the (daily) transmission index is calculated as  $R_t \times \tau$  where  $\tau^{-1}$  is the infectious period.



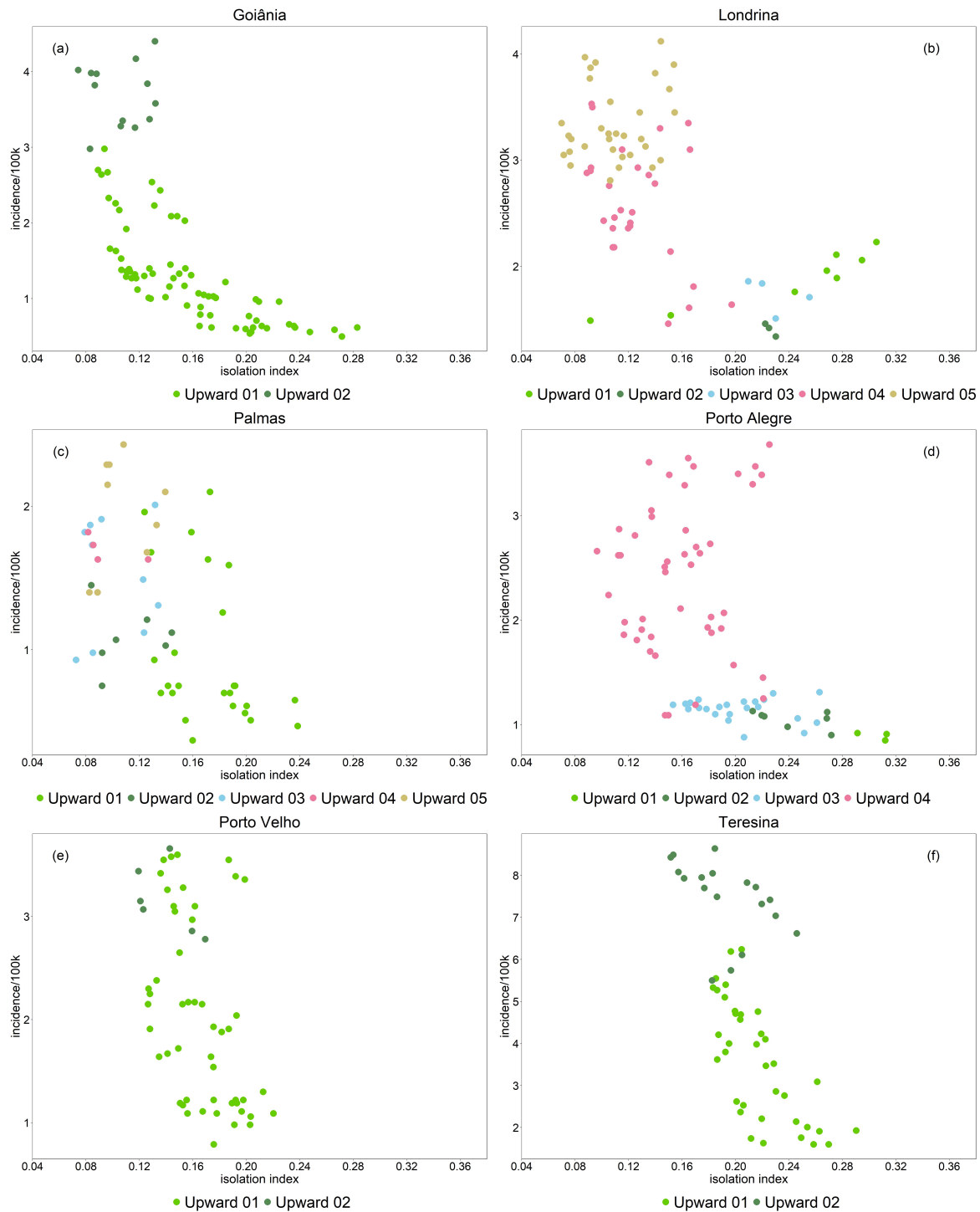
**Fig. 5** Temporal evolution of the number of cases for the municipality of Aracaju. The date corresponds to the day of the first symptoms, measured from ( $t=0$ ) March, 15. The stage 1 refers to period between March 15 and the occurrence of 1.5625% of the cases in the upward phase and the stage 2 refers to period between 1.5625% and 3.125% of it. The stages 3 to 7 correspond to periods between 3.125%-6.25%, 6.25%-12.5%, 12.5%-25%, 25%-50% and 50%-100% of cases in the upward phase, respectively.



**Fig. 6** (a) Temporal evolution of the daily incidence and (b) the dispersion between the daily incidence and the isolation index for the city of Porto Alegre. The colors refer to periods of days where the incidence increases or decreases for at least three in a row. The downward phase of the incidence curve is in black.



**Fig. 7** Dispersion between the daily incidence and the isolation index for the cities of (a) Campinas-SP, (b) Campo Grande-MS, (c) Caxias do Sul-RS, (d) Cuiabá-MT, (e) Curitiba-PR and (f) Florianópolis-SC. The colors refer to periods of days where the incidence increases or decreases for at least three in a row. Only the upward phase is considered.



**Fig. 8** Dispersion between the daily incidence and the isolation index for the cities of ((a) Goiânia-GO, (b) Londrina-PR, (c) Palmas-TO, (d) Porto Alegre-RS, (e) Porto Velho-RO and (f) Teresina-PI. The colors refer to periods of days where the incidence increases or decreases for at least three in a row. Only the upward phase is considered.