

1 **Title:** Mutation-specific SARS-CoV-2 PCR Screen: Rapid and Accurate Detection of  
2 Variants of Concern and the Identification of a Newly Emerging Variant with Spike  
3 L452R Mutation

4  
5 Huanyu Wang<sup>1,2</sup>, Sophonie Jean<sup>1,2</sup>, Richard Eltringham<sup>1,2</sup>, John Madison<sup>1,2</sup>, Pamela  
6 Snyder<sup>2</sup>, Huolin Tu<sup>2</sup>, Daniel M. Jones<sup>2\*</sup>, Amy L. Leber<sup>1,2,3\*#</sup>

7  
8 <sup>1</sup>Department of Pathology and Laboratory Medicine, Nationwide Children's Hospital,  
9 Columbus, OH

10 <sup>2</sup>Department of Pathology, The Ohio State University, Columbus, OH

11 <sup>3</sup>Department of Pediatrics, The Ohio State University, Columbus, OH

12  
13 \*Contributed equally

14 #Corresponding author: Amy L. Leber, Department of Pathology and Laboratory  
15 Medicine, Nationwide Children's Hospital. Columbus, OH. Email:  
16 [Amy.Leber@nationwidechildrens.org](mailto:Amy.Leber@nationwidechildrens.org), phone: 1-614-722-5445

17  
18 Running title: SARS-CoV-2 VOC Screening

19 Keywords: SARS-CoV-2, variant screening, newly emerging SARS-CoV-2 variant

20 **Abstract**

21 The emergence of more transmissible and/or more virulent SARS-CoV-2 variants of  
22 concern (VOCs) has triggered intensive genomic surveillance, which is costly and  
23 difficult to sustain operationally over the long-term. To address this problem, we  
24 developed a set of four multiplex mutation-specific PCR-based assays with same-day  
25 reporting that can detect five VOCs and three variants of interest (VOIs), as defined in  
26 the March 2021 guidelines from the United States (US) Centers for Disease Control and  
27 Prevention. The screening results were compared to the whole genome sequencing  
28 (WGS) and showed 100% concordance for strain typing for B.1.1.7 (25) and P.1 (5)  
29 variants using Spike (S) mutations N501Y, E484K and H69\_V70del assays. The S  
30 L450R assay, designed to detect the B.1.427/429 VOCs, also identified multiple isolates  
31 of a newly emerging multiply-mutated B.1.526.1 variant that is now rapidly increasing in  
32 the Eastern US. PCR approaches can be easily adopted in clinical laboratories, provide  
33 rapid screening methods to allow early detection of newly emergent variants and to  
34 efficiently triage cases for full genomic sequencing.

35

## 36 **Introduction**

37 The novel severe acute respiratory syndrome coronavirus type 2 (SARS-CoV-2) has  
38 evolved considerably in the last six months. Most mutations of interest occur in the  
39 Spike (S) protein, the viral protein that binds to the Angiotensin Converting Enzyme 2  
40 (ACE2) cell receptor to initiate the attachment of the virus. Beginning in late 2020,  
41 several biologically significant S mutations were shown to be associated with increased  
42 transmissibility and virulence, diminished protection by antibodies from convalescent or  
43 vaccinated anti-sera as well as decreased response to monoclonal antibody treatment.  
44 Therefore, strategies to cost-effectively monitor for shifts in SARS-CoV-2 variants are  
45 needed.

46 Three variants of concern (VOCs) with multiple mutations in the S gene have been  
47 identified as particularly concerning. The B.1.1.7 (501Y, V1) variant emerged in England  
48 and rapidly became the dominant variant in the UK and has now spread to more than  
49 50 countries [1]. B.1.1.7 contains 8-13 different S mutations, including, N501Y in the  
50 receptor binding domain (RBD). Studies suggested that it may be associated with  
51 higher transmissibility and increased virulence [2, 3]. The B.1.3.5.1 (510Y, V2) variant  
52 was first reported in late 2020 in South Africa [4] and variant P.1 (20J/501Y.V3) arose in  
53 November 2020 in Brazil. The three spike mutations (K417N/T, E484K and N501Y)  
54 carried by both the Brazil and South African variants are associated with increased  
55 binding to the human ACE 2 receptor, are more transmissible and mediate partial  
56 escape from the protective humoral immunity resulting from prior infection or  
57 vaccination [5-7].

58 In March 2021, the US Centers for Disease Control and Prevention (CDC) included  
59 B.1.427/B.1.429 as an additional VOC due to its rapid rise in incidence, and introduced  
60 the “variant of interest” (VOI) category to encompass strain mutations that might  
61 override neutralizing antibody responses, principally S E474K [8, 9]. B.1.427/B.1.429  
62 carries the S L452R mutation which appears linked to the increased transmissibility of  
63 this strain [10]. S L452R may be associated with reduction in neutralization using  
64 convalescent, post-vaccination sera and resistance to the neutralization by some  
65 monoclonal antibodies that have acquired emergency use authorization for treatment  
66 [10-12].

67 The emergence of these VOC highlights that enhanced surveillance is urgently needed.  
68 Real time identification of both VOC and VOI will have significant impact not only on  
69 management of this on-going pandemic but also patient care. However, this is not  
70 possible without local sequencing capacity, which is not always available or may be  
71 limited in throughput capacity; WGS is also costly and takes considerable time to  
72 complete. An accurate screening strategy would allow the selective use of WGS by  
73 targeting samples of interest. This would maximize the use of WGS and broaden the  
74 clinical laboratories able to actively participate in identification of VOC.

75 Here, we developed reverse-transcriptase real time PCR (rt-PCR) based assays to  
76 screen for spike protein deletions 69-70, 242-244 and mutations N501Y, E484K and  
77 L452R in clinical samples known to be positive for SARS-CoV-2. The pattern of  
78 positivity accurately typed each VOC (as confirmed by genomic sequencing) except for  
79 B.1.427/429 where the majority of cases detected (in March-April 2021) corresponded  
80 to a newly emerging multiple mutated variant (previously types as B.1.526.1).

## 81 **Materials and Methods**

### 82 **Study Samples**

83 Nasopharyngeal swab samples were collected from pediatric patients and employees of  
84 Nationwide Children's Hospital, Columbus, Ohio. A flocked NP swab was used and  
85 placed into viral transport media for transport to the laboratory for testing by a SARS-  
86 CoV2 PCR assay. This surveillance study utilized residual sample for assay validation  
87 and was thus exempt human subject research. The set comprised 247 samples,  
88 including 156 SARS-CoV-2 positive swabs from February 2<sup>nd</sup> to April 1<sup>st</sup> 2021 that  
89 included all adequate samples with Ct values less than 35, and 91 samples collected  
90 from Jan 1<sup>st</sup> 2021 to Feb 1<sup>st</sup> 2021 with Ct values less than 35 that were randomly  
91 selected from adequate residual samples.

### 92 **Diagnostic SARS-CoV-2 PCR Assay**

93 We utilized a laboratory-developed modification of the CDC SARS-CoV-2 rt-PCR assay  
94 which received Emergency Use Authorization by the FDA on April 17, 2020.  
95 (<https://www.fda.gov/media/137424/download>; accessed March 24, 2021) Briefly, total  
96 nucleic acid was obtained by extraction using the NucliSENS easyMag platform  
97 (bioMerieux, Durham, NC) and 5µL of the eluate was added to a 25 µL total volume  
98 reaction mixture [ 5µl of 1XTaqPath 1-Step RT-qPCR Master Mix, CG (Thermo Fisher  
99 Scientific, Waltham, MA), 1.5 µl of RT-PCR primer/probe set (N1 or N2, 2019-nCoV kit,  
100 Integrated DNA Technologies, Coralville, IA) and 13.5µl nuclease-free water]. The RT-  
101 PCR was carried out using the Applied Biosystems™ QuantStudio™ 7 Flex Real Time  
102 PCR detection system with QuantStudio™ Real-Time PCR software v.1.3 (Thermo

103 Fisher Scientific, Waltham, MA) with the following running conditions: 25°C for 2min,  
104 50°C for 15 minutes, enzyme activation at 95°C for 2min, and 45 cycles of 95°C for 3  
105 sec and 55°C for 30 sec.

## 106 **Mutation Screening Assays**

107 SARS-CoV-2 positive sample were screened by four multiplex rt-PCR assays, with  
108 results available same day.

109 The sequences for detection of  $\Delta$ 69-70 were adapted from a multiplex real-time RT-  
110 PCR assay for detection of SARS-CoV-2[13]. The probe overlaps with the sequences  
111 that encode amino acids 69-70, therefore, a negative result for this assay predicts the  
112 presence of a detection S 69-70 in the sample. Using a similar strategy, a primer/probe  
113 set that targets the detection S  $\Delta$ 242-244 was designed and was run in the same  
114 reaction with S  $\Delta$ 69-70. In addition, three separate assays were designed to detect  
115 spike mutations 501Y, 484K and 452R and wild types 501N, 484E and 452L. The  
116 sequences for each oligonucleotide are presented in Table 1.

117 Briefly, 5 $\mu$ L of the total nucleic acid eluate was added to a 20  $\mu$ L total volume reaction  
118 mixture [1XTaqPath 1-Step RT-qPCR Master Mix, CG (Thermo Fisher Scientific,  
119 Waltham, MA), 0.9 $\mu$ M of each primer and 0.2 $\mu$ M of each probe]. The RT-PCR was  
120 carried out using the ABI 7500 thermocycler (Life Technologies, Grand Island, NY). The  
121 N501Y, E484K and L452R assays were carried out with the following running conditions:  
122 25°C for 2 min, then 50°C for 15 min, followed by 10 min at 95°C, 45 cycles of 95°C for  
123 15s and 65°C for 1 min. The  $\Delta$ 69-70/ $\Delta$ 242-244 assay was run under the following

124 conditions: 25°C for 2 min, then 50°C for 15 min, followed by 10 min at 95°C, 45 cycles  
125 of 95°C for 15s and 60°C for 1 min.

126 Samples that yielded negative result(s) in  $\Delta 69-70/\Delta 242-244$  assay or were positive for  
127 501YP2, 484KP2 and L452RP2 were considered screen-positive and assigned to a  
128 VOC based on the scoring in Table 2. All screening positive samples and a similar  
129 number of screening negative samples collected in the same period were sent for WGS.

### 130 **SARS-CoV-2 Whole Genome Sequencing**

131 Previously extracted RNA underwent 1st and 2nd strand cDNA synthesis (NEBNext®  
132 Ultra# II Non-Directional RNA Second Strand Synthesis Module, NEB, Ipswich, MA)  
133 followed by sequencing using two different clinically validated amplicon-based methods.  
134 Most samples were analyzed using the SARS-CoV-2 Research Panel primers  
135 (ThermoFisher) on the Ion Chef-S5 sequencer (ThermoFisher) per manufacturer's  
136 conditions. The remaining sequences were analyzed using the CovidSeq kit (Illumina,  
137 San Diego, CA) per manufacturer's conditions and sequenced on the NextSeq 550  
138 sequencer (Illumina). Strain typing on the two different assays were cross-validated  
139 using a set of 20 SARS-CoV-2 positive and 5 SARS-CoV-2 negative samples.

### 140 **Genomic Analyses and Strain Typing**

141 Sequence analysis tools include custom pipelines utilizing GATK and Mutect2  
142 (Broad Institute) and Dragen SARS-COVID variant detection (for CovidSeq assay).  
143 Adequate sequencing required coverage of strain-distinguishing areas of the ORF1a, S,  
144 N and ORF8 genes at least 100X depth. All but two sequences in this series yielded  
145 adequate strain-typable sequences and no sample contained a mixed population of

146 viruses. Viral sequences were strain-typed using Pangolin (<https://cov-lineages.org>) and  
147 NextStrain criteria ([https://nextstrain.org/blog/2021-01-06-updated-SARS-CoV-2-clade-](https://nextstrain.org/blog/2021-01-06-updated-SARS-CoV-2-clade-naming)  
148 [naming](https://nextstrain.org/blog/2021-01-06-updated-SARS-CoV-2-clade-naming)). Novel combinations of mutations were investigated for similar viruses using  
149 the laboratory internal sequence database (1110 sequences as of 4/1/21) and/or the  
150 GISAID database (accessed at [gisaid.org](https://gisaid.org)).

## 151 **Results**

### 152 **Correlation of RT-PCR Mutation Screen Results with Whole Genome SARS-CoV-2** 153 **Sequencing**

154 From Jan 2021 to April 1<sup>st</sup>, we screened 247 samples for VOC and VOI. Among all  
155 screened samples, 128 samples were collected from hospital employees, 91 samples  
156 were from outpatients and 28 samples were from hospitalized or emergency room  
157 patients. A total of 102 samples were sent for WGS.

158 There were 61 screen-positive samples and 41 screen-negative samples sent for WGS.  
159 The screening assays were 100% concordant with the WGS for identification of the  
160 three RBD mutation (Table 3). The screening assays successfully predicted the  
161 presence of all 25 B.1.1.7 and 5 P.1 VOCs (Table 4). Six samples were positive for only  
162 the E484K mutation, with five confirmed to be P.2 and one confirmed to be R.1 by  
163 WGS. The screening PCR assays had 100% negative agreement when compared to  
164 WGS for prediction of these VOCs and VOIs. Sixteen of the samples were positive only  
165 for N501Y and were shown by sequencing to be the 20G/501Y strain we have  
166 previously described [14] in fourteen and B.1.1.165 in two. Eight samples were screen-



167 positive for S L452R with 3 of them strain typed as B.1.427/B.1.429, and five  
168 representing the newly emerging B.1.526.1 variant described in more detail below.

169 All negative screening samples were negative for VOC or VOI by WGS. Forty one  
170 screen-negative samples were found to be commonly encountered B.1 or B.1.2 with no  
171 S mutations of concern. No sample was positive only for S deletion  $\Delta$ 69-70 or S deletion  
172  $\Delta$ 242-244. One sample that had suboptimal amplification in the  $\Delta$ 69-70 assay was  
173 found to have a mutation in the primer binding site.

#### 174 **Timing of Emergence of PCR-detected Variants of Concern Matches Results from**

175 From January to April 1<sup>st</sup> 2021, we screened 247 SARS-CoV-2 samples. As shown in  
176 Figure 1, the earliest case with B.1.1.7 was identified in mid-February 2021,  
177 subsequently, cases of B.1.1.7 were found in every batch of samples tested. The  
178 earliest case with P.1 was also collected in mid-February 2021, with a substantial  
179 increase in P.1 positive cases over time. The first B.1.429 in our population appeared in  
180 late March 2021.

181 In the third week of February, 2021, one sample collected from a patient was found to  
182 carry both N501Y and E484K mutations and was sent for WGS. The sequences of this  
183 sample closely relate to Brazil P.1. VOC and was designated into lineage B.1.1.28 and  
184 was the first P.1. sample reported in the state of Ohio (EPI\_ISL\_1164183). In the same  
185 week, another sample collected from an employee was found to carry  $\Delta$ 69-70 and  
186 E484K mutation that represent the first Ohio sample of the emerging B.1.525 lineage  
187 (EPI\_ISL\_1203843).

188 Three of the L452R-bearing viruses in our screen were documented to be B.1.427/429.  
189 This VOC first appeared in California in July 2020 (EPI\_ISL\_765997) and is  
190 characterized by Spike mutations S13I, W152C as well as L452R. In early November  
191 2020, B.1.427/429 became the predominant strain in Southern California before  
192 spreading throughout the United States in December-January 2020. The observed  
193 increase in B.1.427/429 in our study matches that seen in CDC totals from WGS in Ohio.

#### 194 **Emergence of the B.1.526.1 L452R-containing variant**

195 Unlike the other VOC in our study, we noted that a positive screen for L452R still  
196 required sequencing to definitively strain type. This was due to the emergence in late  
197 March in our area of another L452R-bearing strain besides the B.1.427/429 VOC. Five  
198 of 8 (62.5%) screen-positive L452R-containing viruses from March 2021 represented a  
199 newly emerging strain that has been tentatively strain-typed as B.1.526.1 (Table 5).  
200 The diagnostic PCR Ct values are presented in Table 6. In addition to L452R, this strain  
201 has four additional S mutations, D80G, F157S, T859N and D950H, which include both  
202 N-terminal and stalk variants. It shares with B.1.427/429, the 20C/B.1 backbone as  
203 indicated by mutations ORF1 T265I, ORF1a A1679S, ORF1a L3201P, ORF1b P314L,  
204 ORF3a Q57H and S D614G.

205 Based on the frequency of the Spike mutations in B.1.526.1 viruses reported in GISAID  
206 as of April 10 2021, the variant likely developed from a L452R-bearing B.1 strain, then  
207 acquired F157S, D80G and Y145del, followed by T859 and D950H. The few GISAID  
208 sequences that do not follow this pattern are reported as suboptimal quality studies. A  
209 small number (n=7) of B.1.526.1 viruses contain D80N/N81Y instead of D80G. The

210 earliest GISAID-reported instances of B.1.526.1 were two sequences from New York  
211 City collected on 12/18/20 (EPI\_ISL\_794288 and EPI\_ISL\_794289), with all sequences  
212 through 2/5/21 reported from New York City (mostly, Bronx county). Spread to 11 other  
213 states (including Ohio) occurred in February and then throughout the United States in  
214 March, 2021. Given that 578 of 2369 (24.4%) viruses typed as B.1.526.1 lineage in  
215 GISAID do not contain any of the above Spike mutations, lineage classification may be  
216 provisional.

217 A comparison of the incidence of the B.1.427/429 and B.1.526.1 strains in GISAID  
218 during 2021 shows a declining proportion of the forms and increases in the latter in  
219 March matching our observations in Columbus (Figure 2).

## 220 **Discussion**

221 We describe a multiplex, mutation-specific rt-PCR-based strategy to rapidly and reliably  
222 screen for SARS-CoV2 genetic variants in a clinical laboratory setting. These assays  
223 detect all three target RBD spike mutations and have a 100% concordance with the  
224 strains identified by WGS. Using simple rules based on the combination of assay results,  
225 the strategy successfully identified all B.1.1.7 and P.1 samples, with the frequencies of  
226 each of the VOCs detected matching their emergence by the CDC and Department of  
227 Health WGS surveillance studies over the last several months. Using this strategy, we  
228 successfully identified and reported the first P.1 variant in Ohio from a patient which  
229 suggested that the P.1 variant has already spread in the community; a finding confirmed  
230 in subsequent reports.

231 However, for S L452R-positive screens, we noted that both B.1.427/429 VOC and a  
232 newly emerging B.1.526.1 strain were detected [15]. The latter samples were identified  
233 only in the latest March 2021 samples and match the observed spread of GISAID-  
234 reported B.1.526.1 viruses outside of the state of New York. Although both of these  
235 strains show multiple mutations in other areas of the Spike gene, the L452R mutation is  
236 their only RBD mutation. This mutation has been associated with resistance to  
237 neutralization by RBD-binding monoclonal antibodies, such as bamlanivimab [12], which  
238 has affected the use of these therapies. The single RBD mutation in these two strains  
239 is in contrast to other VOC which besides N501Y and E484K (in two of them, P.1 and  
240 B.1.351) show additional mutations known to alter receptor binding affinity [16-18]. It will  
241 be important to monitor sequential samples from these strains to see if they acquire  
242 additional RBD mutations, particularly at antibody escape residues, as B.1.1.7 viruses  
243 have done in some cases.

244 Mutation-specific PCR assays can be run in real-time with a turn-around time of several  
245 hours, which is significantly faster than WGS and in this configuration can be performed  
246 cost-effectively on all PCR-positive samples. This broader approach is clearly superior  
247 to the use of other VOC indicators such as S-gene dropout in the 3-target diagnostic  
248 RT-PCR assay (TaqPath kit, Thermo Fisher Scientific, Waltham, MA) which has been  
249 reported by others as a method to detect the H69-V70del associated with B.1.1.7 [9, 19-  
250 22] . Similarly, PCR-based N501Y and E484K mutation-specific assays are sensitive for  
251 detection of P.1 and B.1.351 [23, 24], respectively, but will not definitively distinguish  
252 them as an increasing number of VOIs also bear these mutations. In this study, we  
253 could not fully evaluate all scoring combinations, particularly the use of co-positivity for

254 N501Y and  $\Delta$ 242-244 as a marker for the B.1.351 VOC, as we did not find any  
255 examples of this virus in our test population. However, the combination of assay  
256 presented here has more diagnostic utility in distinguishing VOC and VOI than single  
257 mutation-specific PCR approaches.

258 There are some limitations to a reflex mutant-PCR panel strategy. First, many  
259 diagnostic PCR platforms can deplete swab material, leaving an inadequate volume of  
260 residual sample for a multi-tube mutation screen. These assays also did not perform  
261 well when the diagnostic PCR Ct value is greater than 35 cycles. However, this problem  
262 is shared with amplicon-based WGS [25]. As demonstrated by our finding with L452R-  
263 positives, new variants of SARS-CoV-2 are still emerging so confirmation of some  
264 results by WGS will still be required. Finally, to evaluate for novel mutations, a sampling  
265 of screen-negative specimens for WGS will be an important component of a full  
266 surveillance strategy.

267 In summary, the use of a panel of multiplex, mutant-specific rt-PCR assays represents  
268 an ideal balance of cost, turn-around-time and accuracy for detecting SARS-CoV-2  
269 VOC and VOI. The technology is amenable for use in a larger number of clinical  
270 laboratories than next-generation sequencing. In our current environment requiring  
271 rapid strain typing to guide both treatment decisions and public health measures, such a  
272 rapid and accessible approach will be essential.

273

274 **Acknowledgments**

275 For the GIS sequences in Figure 2, we acknowledge the originating laboratories  
276 responsible for obtaining the specimens and the submitting laboratories where genetic  
277 sequence data were generated and shared via the GISAID Initiative.

278

279

## 280 Reference

- 281 1. Alpert, T., et al., *Early introductions and community transmission of SARS-CoV-2 variant*  
282 *B.1.1.7 in the United States*. medRxiv, 2021.
- 283 2. Challen, R., et al., *Risk of mortality in patients infected with SARS-CoV-2 variant of*  
284 *concern 202012/1: matched cohort study*. BMJ, 2021. **372**: p. n579.
- 285 3. Davies, N.G., et al., *Increased mortality in community-tested cases of SARS-CoV-2 lineage*  
286 *B.1.1.7*. Nature, 2021.
- 287 4. Tegally, H., et al., *Emergence of a SARS-CoV-2 variant of concern with mutations in spike*  
288 *glycoprotein*. Nature, 2021.
- 289 5. Zucman, N., et al., *Severe reinfection with South African SARS-CoV-2 variant 501Y.V2: A*  
290 *case report*. Clin Infect Dis, 2021.
- 291 6. Moyo-Gwete, T., et al., *SARS-CoV-2 501Y.V2 (B.1.351) elicits cross-reactive neutralizing*  
292 *antibodies*. bioRxiv, 2021.
- 293 7. Garcia-Beltran, W.F., et al., *Circulating SARS-CoV-2 variants escape neutralization by*  
294 *vaccine-induced humoral immunity*. medRxiv, 2021.
- 295 8. *Centers for Disease Control and Prevention*. 2021; Available from:  
296 <https://www.cdc.gov/coronavirus/2019-ncov/>.
- 297 9. Annavajhala, M.K., et al., *A Novel SARS-CoV-2 Variant of Concern, B.1.526, Identified in*  
298 *New York*. medRxiv, 2021.
- 299 10. Zhang, W., et al., *Emergence of a Novel SARS-CoV-2 Variant in Southern California*. JAMA,  
300 2021.

- 301 11. Deng, X., et al., *Transmission, infectivity, and antibody neutralization of an emerging*  
302 *SARS-CoV-2 variant in California carrying a L452R spike protein mutation*. medRxiv, 2021.
- 303 12. Liu, Z., et al., *Identification of SARS-CoV-2 spike mutations that attenuate monoclonal*  
304 *and serum antibody neutralization*. Cell Host Microbe, 2021. **29**(3): p. 477-488 e4.
- 305 13. Zhen, W. and G.J. Berry, *Development of a New Multiplex Real-Time RT-PCR Assay for*  
306 *Severe Acute Respiratory Syndrome Coronavirus 2 (SARS-CoV-2) Detection*. J Mol Diagn,  
307 2020. **22**(12): p. 1367-1372.
- 308 14. Tu H, A.M., Kubatko L, Hunt M, Pan X, Ru P, Garee J, Thomas K, Mohler P, Pancholi P,  
309 Jones D. , *Distinct Patterns of Emergence of SARS-CoV-2 Spike Variants including N501Y*  
310 *in Clinical Samples in Columbus Ohio*. bioRxiv, 2021.
- 311 15. Greaney AJ, S.T., Barnes CO, Weisblum Y, Schmidt F, Caskey M, Gaebler C, Cho A,  
312 Agudelo M, Finkin S, Wang Z, *Mutational escape from the polyclonal antibody response*  
313 *to SARS-CoV-2 infection is largely shaped by a single class of antibodies*. bioRxiv, 2021.
- 314 16. Starr, T.N., et al., *Prospective mapping of viral mutations that escape antibodies used to*  
315 *treat COVID-19*. Science, 2021. **371**(6531): p. 850-854.
- 316 17. Greaney, A.J., et al., *Comprehensive mapping of mutations in the SARS-CoV-2 receptor-*  
317 *binding domain that affect recognition by polyclonal human plasma antibodies*. Cell Host  
318 Microbe, 2021. **29**(3): p. 463-476 e6.
- 319 18. Greaney, A.J., et al., *Complete Mapping of Mutations to the SARS-CoV-2 Spike Receptor-*  
320 *Binding Domain that Escape Antibody Recognition*. Cell Host Microbe, 2021. **29**(1): p. 44-  
321 57 e9.



- 322 19. Bal, A., et al., *Two-step strategy for the identification of SARS-CoV-2 variant of concern*  
323 *202012/01 and other variants with spike deletion H69-V70, France, August to December*  
324 *2020*. Euro Surveill, 2021. **26**(3).
- 325 20. Ibba, G., et al., *A straightforward molecular strategy to retrospectively investigate the*  
326 *spread of SARS-CoV-2 VOC202012/01 B.1.1.7 variant*. J Infect Dev Ctries, 2021. **15**(2): p.  
327 242-246.
- 328 21. Gaymard, A., et al., *Early assessment of diffusion and possible expansion of SARS-CoV-2*  
329 *Lineage 20I/501Y.V1 (B.1.1.7, variant of concern 202012/01) in France, January to*  
330 *March 2021*. Euro Surveill, 2021. **26**(9).
- 331 22. Borges, V., et al., *Tracking SARS-CoV-2 lineage B.1.1.7 dissemination: insights from*  
332 *nationwide spike gene target failure (SGTF) and spike gene late detection (SGTL) data,*  
333 *Portugal, week 49 2020 to week 3 2021*. Euro Surveill, 2021. **26**(10).
- 334 23. Banada, P., et al., *A Simple RT-PCR Melting temperature Assay to Rapidly Screen for*  
335 *Widely Circulating SARS-CoV-2 Variants*. medRxiv, 2021.
- 336 24. Matic, N., et al., *Rapid Detection of SARS-CoV-2 Variants of Concern, Including*  
337 *B.1.1.28/P.1, in British Columbia, Canada*. Emerg Infect Dis, 2021. **27**(6).
- 338 25. Charre, C., et al., *Evaluation of NGS-based approaches for SARS-CoV-2 whole genome*  
339 *characterisation*. Virus Evol, 2020. **6**(2): p. veaa075.

340

341 **Figure Legends**

342 **Figure 1. Shifts in the proportions of SARS-CoV-2 strains from January to March**  
343 **2021.**

344 **Figure 2. Comparison of incidence in the United States of B.1.427/429 and**  
345 **B.1.526.1 in 2021.** Spike L452R-bearing SARS-CoV-2 genomes from North America  
346 were downloaded from GISAID and strain type confirmed by mutation pattern. Graphed  
347 is the proportion of B.1.427/429 versus B.1.526 viruses during each 2-week period in  
348 2021.

349

350

351 **Table 1: Mutation-specific reverse-transcriptase PCR: primers and probes.**

| Assays  | Oligo name   | Sequences                                |
|---|--------------|--|
| S gene Δ69-70/<br>Δ242-244<br>multiplex assay | S Δ69-70 F   | 5'-TCAACTCAGGACTTGTTCTTAC-3'             |
|   | S Δ69-70 R   | 5'-TGGTAGGACAGGGTTATCAAAC-3'             |
|   | S Δ69-70 P   | 5'- FAM-TGGTCCCAGAGACATGTATAGCAT-BHQ1-3' |
|   | S Δ242-244 F | 5'- TGGTAGATTTGCCAATAGGTATTAACA -3'      |
|   | S Δ242-244 R | 5'- CTGAAGAAGAATCACCAGGAGTCA -3'         |
|   | S Δ242-244 P | 5' - VIC-ACTTTACTTGCTTTACATAGAAG-MGB -3' |
| S gene N501Y<br>assay                         | S N501Y F    | 5'- TGTTACTTTTCCTTTACAATCATATGGTTTC -3'  |
|   | S N501Y R    | 5'-GAAAGTACTACTACTCTGTATGGTTGGTAACC -3'  |
|   | S 501N P1    | 5'-VIC-CAACCCACTaATGGTGTT-MGB-3'         |
|   | S 501Y P2    | 5'-FAM-CAACCCACTtATGGTGTT-MGB--3'        |
| S gene E484K<br>assay                         | S E484K F    | 5'-CAGGCCGGTAGCACACCTT-3'                |
|   | S E484K R    | 5'-GTTGGAAACCATATGATTGTAAAGGA-3'         |
|   | S 484E P1    | 5'-FAM-TAATGGTGTTgAAGGTTT-MGB -3'        |
|   | S 484K P2    | 5'-VIC-TGTAATGGTGTTaAAGGT -MGB-3'        |
| S gene L452R<br>assay                         | S L452R F    | 5'-TGATAGATTTTCAGTTGAAATATCTCTCTCA-3'    |
|   | S L452R R    | 5'-AATCTTGATTCTAAGGTTGGTGGTAATTAT-3'     |
|   | S 452L P1    | 5' FAM-CCTAAACAATCTATACaGGTAA-MGB-3'     |
|   | S 452R P2    | 5'-VIC-CTAAACAATCTATACcGGTAAT-MGB-3'     |

352

353

354 **Table 2: Strain-typing rules for interpretation of screening results.**

|                                     | Mutations      |                  |       |       |       |
|-------------------------------------|----------------|------------------|-------|-------|-------|
|                                     | $\Delta 69-70$ | $\Delta 242-244$ | N501Y | E484K | L452R |
| <b>Variants of Concern</b>          |                |                  |       |       |       |
| B.1.1.7                             | Pos            | Neg              | Pos   | Neg   | Neg   |
| B.1.351                             | Neg            | Pos              | Pos   | Pos   | Neg   |
| P.1                                 | Neg            | Neg              | Pos   | Pos   | Neg   |
| B.1.427/ B. 1.429 or B.1 80G-157L-4 | Neg            | Neg              | Neg   | Neg   | Pos   |
| <b>Variants of Interest</b>         |                |                  |       |       |       |
| B.1.525                             | Pos            | Neg              | Neg   | Pos   | Neg   |
| R.1, P.2, B.1.525, B.1.526,         | Neg            | Neg              | Neg   | Pos   | Neg   |
| B.1.2/501Y or B.1.1.165             | Neg            | Neg              | Pos   | Neg   | Neg   |

355

356 **Table 3: Performance of the Screening Assays for Detection of RBD Mutations.**

|                  |     | WGS n=102 |     |       |     |       |     |
|------------------|-----|-----------|-----|-------|-----|-------|-----|
|                  |     | L452R     |     | E484K |     | N501Y |     |
|                  |     | Pos       | Neg | Pos   | Neg | Pos   | Neg |
| Screening assays | Pos | 8         | 0   | 12    | 0   | 46    | 0   |
|                  | Neg | 0         | 94  | 0     | 90  | 0     | 56  |
| PPA %            |     | 100       |     | 100   |     | 100   |     |
| NPA %            |     | 100       |     | 100   |     | 100   |     |

357 PPA: positive percentage agreement; NPA: negative percentage agreement

358

359

360 **Table 4: Performance of the screening assays for detection of variants.**

|                  |     | WGS n=102           |     |         |     |     |     |                    |                 |                      |     |                     |     |                                    |     |
|------------------|-----|---------------------|-----|---------|-----|-----|-----|--------------------|-----------------|----------------------|-----|---------------------|-----|------------------------------------|-----|
|                  |     | Variants of Concern |     |         |     |     |     |                    |                 | Variants of Interest |     |                     |     |                                    |     |
|                  |     | B.1.1.7             |     | B.1.351 |     | P.1 |     | B.1.427 or B.1.429 |                 | B.1.525              |     | P.2, B.1.526 or R.1 |     | 20G/501Y as in Ref 14 or B.1.1.165 |     |
|                  |     | Pos                 | Neg | Pos     | Neg | Pos | Neg | Pos                | Neg             | Pos                  | Neg | Pos                 | Neg | Pos                                | Neg |
| Screening assays | Pos | 25                  | 0   | 0       | 0   | 5   | 0   | 3                  | 5 <sup>\$</sup> | 1                    | 0   | 6*                  | 0   | 16                                 | 0   |
|                  | Neg | 0                   | 77  | 0       | 102 | 0   | 97  | 0                  | 94              | 0                    | 101 | 0                   | 96  | 0                                  | 86  |
| PPA %            |     | 100                 |     | N/A     |     | 100 |     | 37.5               |                 | 100                  |     | 100                 |     | 100                                |     |
| NPA %            |     | 100                 |     | 100     |     | 100 |     | 100                |                 | 100                  |     | 100                 |     | 100                                |     |

361 <sup>\$</sup>All five samples were identified carrying a newly emerged variant: B.1.526.1

362 \*Five samples were identified as strain P.2 and one sample was strain R.1

363 PPA: positive percentage agreement; NPA: negative percentage agreement

364

365 **Table 5: Spike mutations associated with a newly emerged S L452R-containing**  
 366 **variant.**

| Amino acid change           | cDNA location | # GISAID* | # B.1.526.1 viruses (%) | Domain | Other lineages commonly showing the mutation |
|-----------------------------|---------------|-----------|-------------------------|--------|--|
| p.Asp80Gly                  | c.239A>G      | 587       | 548 (93.4)              | NTD    |  |
| p.Phe157Ser                 | c.470T>C      | 661       | 588 (89.0)              | NTD    |  |
| p.Leu452Arg                 | c.1355T>G     | 12,997    | 608 (4.7)               | RBD    | B.1.427/429, A.2.5                           |
| c.2576C>A                   | p.Thr859Asn   | 840       | 461 (54.9)              | CR     | B.1.36.9                                     |
| p.Asp950His                 | c.2848G>C     | 459       | 419 (91.3)              | HR1    |  |
| 4 or 5 of these S mutations |               | 449       | 449 (100)               |        |  |

367 Abbreviations: NTD, N-terminal domain; RBD, receptor binding domain; HR1, heptad repeat 1;

368 CR: connecting region.

369 \*Data as of 4/10/21

370

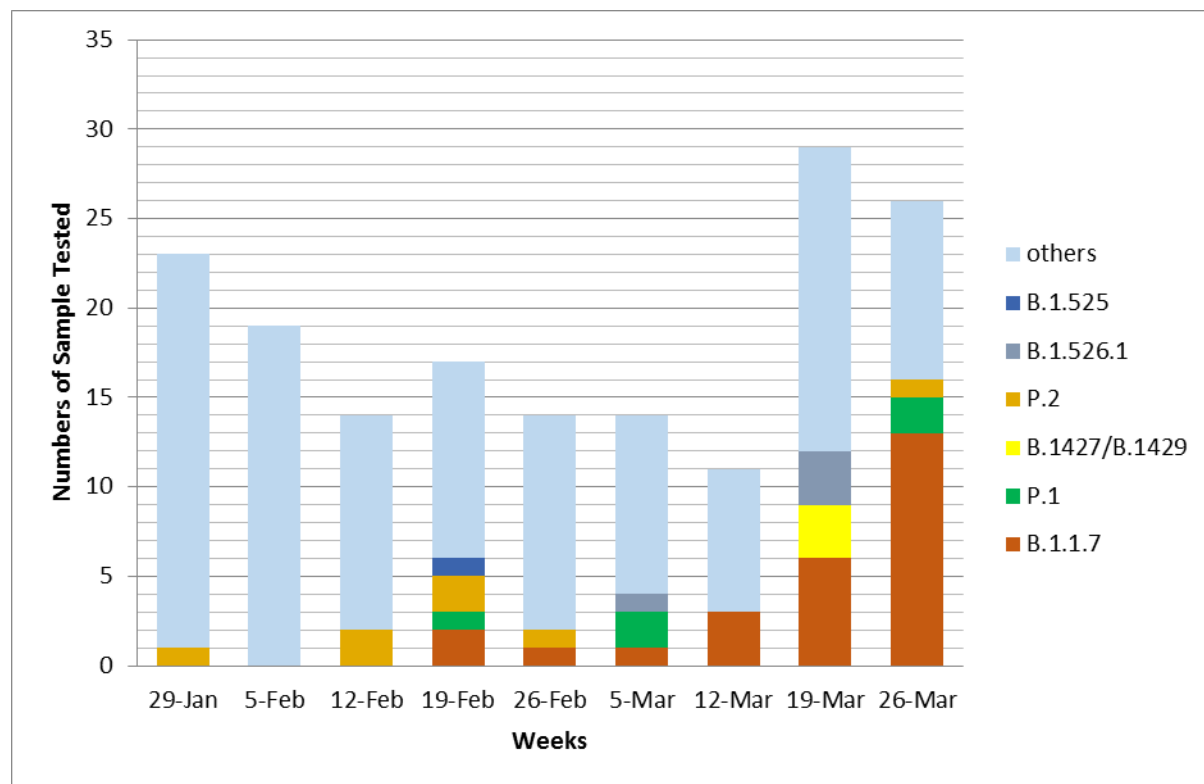
371 **Table 6: Ct values of the samples carry newly emerged S L452R-containing**  
372 **variant.**

| <b>B.1.526.1 Samples</b> | <b>Ct Values</b> |           |
|--------------------------|------------------|-----------|
|                          | <b>N1</b>        | <b>N2</b> |
| Patient 1                | 31.8             | 33.3      |
| Patient 2                | 23.2             | 23.5      |
| Employee 1               | 13.6             | 12.5      |
| Patient 3                | 29.2             | 28.8      |
| Patient 4                | 23.4             | 24.2      |

373

374



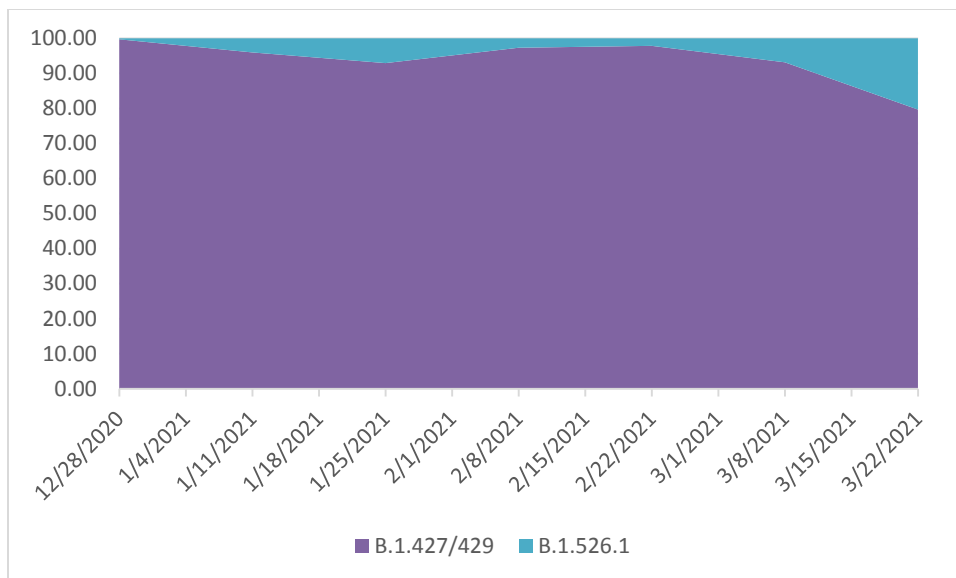


375

376 **Figure 1. Shifts in the proportions of SARS-CoV-2 strains from January to March**

377 **2021.**

378



379  
380 **Figure 2. Comparison of incidence in the United States of B.1.427/429 and**  
381 **B.1.526.1 in 2021.**

382 Spike L452R-bearing SARS-CoV-2 genomes from North America were downloaded  
383 from GISAID and strain type confirmed by mutation pattern. Graphed is the proportion  
384 of B.1.427/429 versus B.1.526 viruses during each 2-week period in 2021.

385