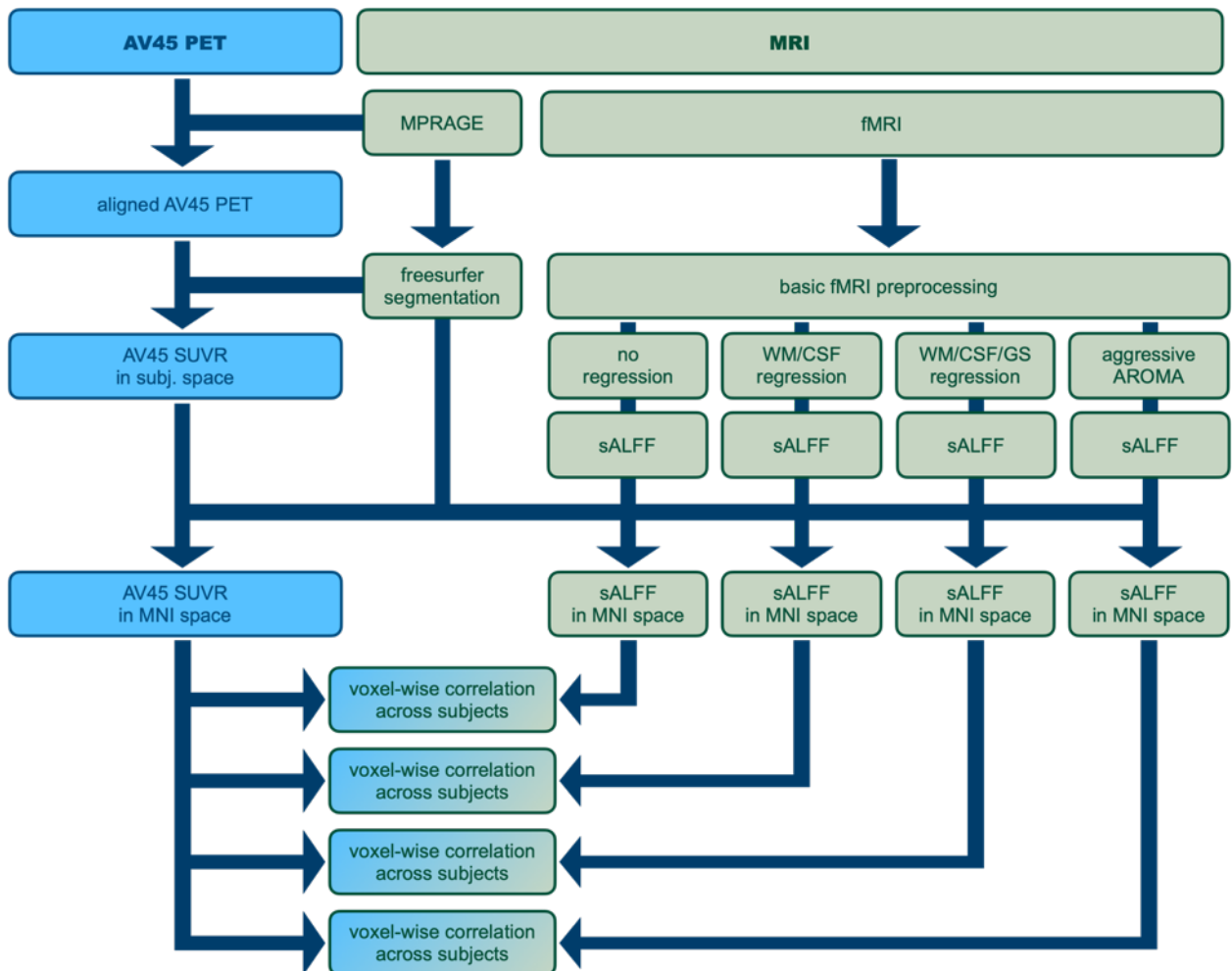


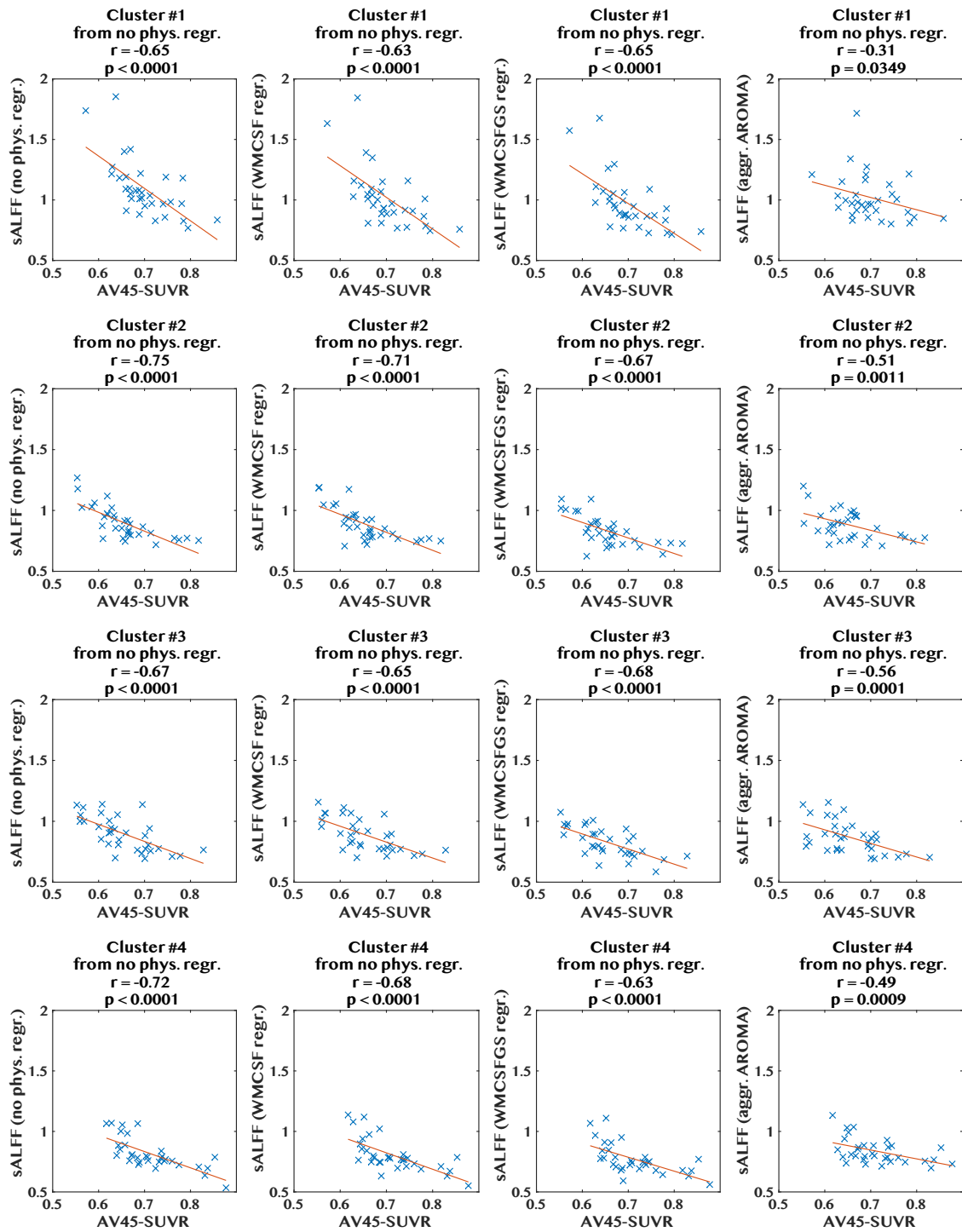
# Resting-state functional MRI signal fluctuations are correlated with brain amyloid- $\beta$ deposition

Norman Scheel<sup>1</sup>, Takashi Tarumi<sup>2,3</sup>, Tsubasa Tomoto<sup>2,5</sup>,  
C. Munro Cullum<sup>4,5,6</sup>, Rong Zhang<sup>2,5</sup>, David C. Zhu<sup>1</sup>

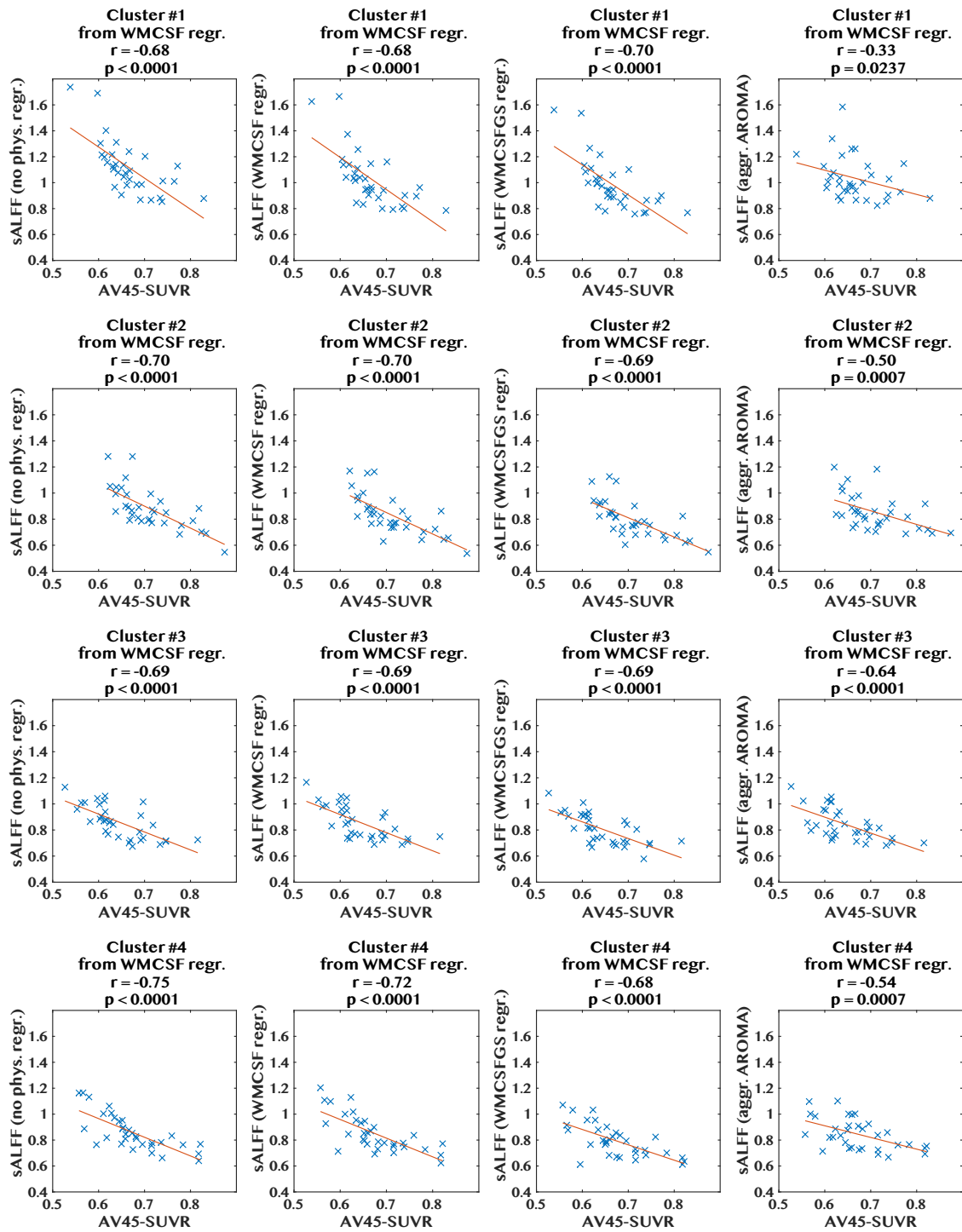
## Supplementary material



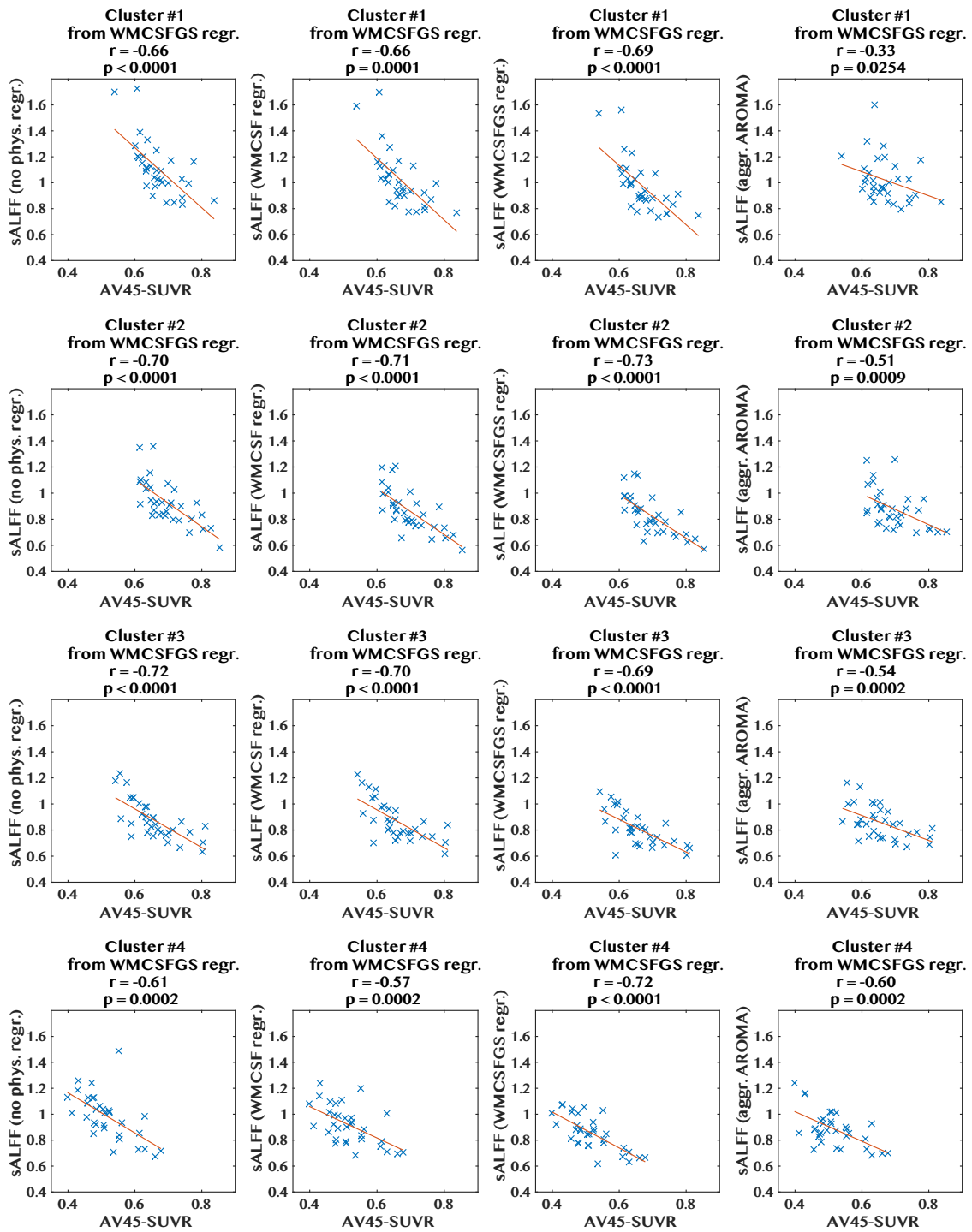
Sup. Figure 1. MRI and AV45 PET processing flowchart.



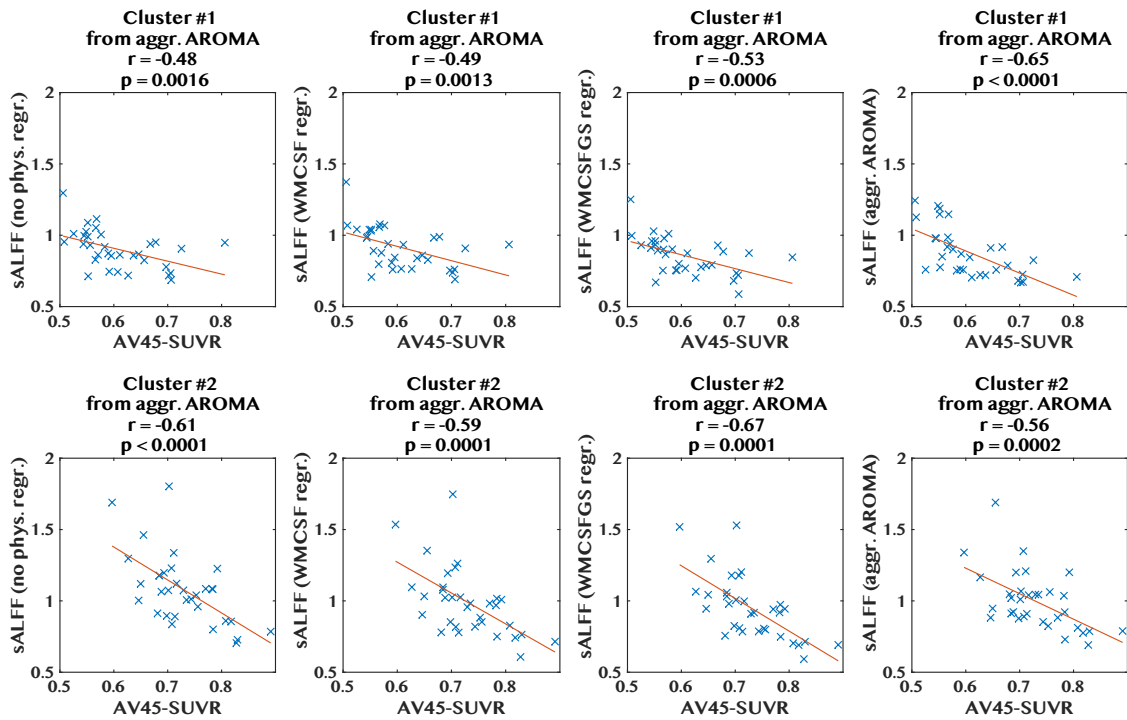
**Sup. Figure 2 Correlation of brain amyloid- $\beta$  deposition and the amplitude of low-frequency BOLD signal fluctuations (sALFF) - Table 2 “No physiological regression clusters” #1-#4 (rows): columns depict the scatter-plots for each physiological/vascular regression procedure, left to right: “no physiological regression”, “WM/CSF regression”, “WM/CSF/GS regression”, and “aggressive AROMA”. Blue crosses represent the 33 subjects, using mean sALFF and mean AV45 within each cluster. The plots show reduced correlation strength going from column 1 to column 4 for each cluster.**



**Sup. Figure 3 Correlation of brain amyloid- $\beta$  deposition and the amplitude of low-frequency BOLD signal fluctuations (sALFF) - Table 2 “WM/CSF regression clusters” #1-#4 (rows): columns depict the scatter-plots for each physiological/vascular regression procedure, left to right: “no physiological regression”, “WM/CSF regression”, “WM/CSF/GS regression”, and “aggressive AROMA”. Blue crosses represent the 33 subjects, using mean sALFF and mean AV45 within each cluster. The plots show reduced correlation strength going from column 1 to column 4 for each cluster.**



**Sup. Figure 4** Correlation of brain amyloid- $\beta$  deposition and the amplitude of low-frequency BOLD signal fluctuations (sALFF) - Table 2 “WM/CSF/GS regression clusters” #1-#4 (rows): columns depict the scatter-plots for each physiological/vascular regression procedure, left to right: “no physiological regression”, “WM/CSF regression”, “WM/CSF/GS regression”, and “aggressive AROMA”. Blue crosses represent the 33 subjects, using mean sALFF and mean AV45 within each cluster. The plots show reduced correlation strength going from column 1 to column 4 for each cluster.



Sup. Figure 5 Correlation of brain amyloid- $\beta$  deposition and the amplitude of low-frequency BOLD signal fluctuations (sALFF) - Table 2 “aggressive AROMA clusters” #1 and #2 (rows): columns depict the scatter-plots for each physiological/vascular regression procedure, left to right: “no physiological regression”, “WM/CSF regression”, “WM/CSF/GS regression”, and “aggressive AROMA”. Blue crosses represent the 33 subjects, using mean sALFF and mean AV45 within each cluster. The plot shows increased correlation strength going from column 1 to column 4 for cluster #1.