

1 **Vasospasm severity is associated with cerebral infarction after subarachnoid**
2 **hemorrhage**

3
4 Samuel B Snider MD^{*A}, Ibrahim Migdady MD^{*A}, Sarah L LaRose^A, Morgan E
5 Mckeown^A, Robert W Regenhardt MD PhD^B, Pui Man Rosalind Lai MD^C, Henrikas
6 Vaitkevicius MD^D, Rose Du MD PhD^C

7
8
9 *Authors contributed equally

10
11 **Affiliations:**

12
13 ^A Division of Neurocritical Care, Department of Neurology, Brigham and Women's
14 Hospital, Boston MA

15
16 ^B Departments of Neurosurgery and Neurology, Massachusetts General Hospital,
17 Boston, MA

18
19 ^C Department of Neurosurgery, Brigham and Women's Hospital, Boston MA

20
21 ^D Marinus Pharmaceuticals, Radnor, PA

22
23
24
25
26 **Corresponding Author:**

27 Samuel B. Snider
28 Division of Neurocritical Care, Department of Neurology,
29 Brigham and Women's Hospital
30 60 Fenwood Road
31 Boston, MA 02115
32 Phone: 857-307-2391

33
34
35 Abstract Word Count:

36 Word Count: 2224

37 Refs: 16

38 Figures: 4

39 Tables: 1

40
41
42
43
44
45
46

47
48
49
50
51
52
53
54
55
56
57
58
59
60
61
62
63
64
65
66
67
68
69
70
71

Abstract

Background

The presence of angiographic vasospasm after aneurysmal subarachnoid hemorrhage (aSAH) is associated with delayed-cerebral ischemia (DCI)-related cerebral infarction and worsened neurological outcome. Transcranial doppler (TCD) measurements of cerebral blood velocity are commonly used after aSAH to screen for vasospasm. We sought to determine whether time-varying TCD measured vasospasm severity is associated with cerebral infarction and to investigate the performance characteristics of different time/severity cutoffs for predicting cerebral infarction.

Methods

We used a retrospective, single-center cohort of consecutive adult aSAH patients with angiographic vasospasm and at least one TCD study. Our primary outcome was DCI-related cerebral infarction, defined as an infarction developing at least 2 days after any surgical intervention without an alternative cause. Time-varying TCD vasospasm severity was defined ordinally (absent, mild, moderate, severe) by the most abnormal vessel on each post-admission hospital day. Cox proportional-hazards models were used to examine associations between time-varying vasospasm severity and infarction. The optimal TCD-based time/severity thresholds for predicting infarction were then identified using the Youden J statistic.

Results

72 Of 218 aSAH patients with angiographic vasospasm, 27 (12%) developed DCI-related
73 infarction. As compared to those without infarction, patients with infarction had higher
74 modified Fisher scale (mFS) scores, and an earlier onset of more-severe vasospasm.
75 Adjusted for mFS, vasospasm severity was associated with infarction (aHR 1.9, 95% CI:
76 1.3-2.6). A threshold of at least mild vasospasm severity on hospital day 4 had a
77 negative predictive value of 92% for the development of infarction, but a positive
78 predictive value of 25%.

79

80 **Conclusions**

81 In aSAH, TCD-measured vasospasm severity is associated with DCI-related infarction.

82 In a single-center dataset, a TCD-based threshold for predicting infarction had a high
83 negative predictive value, supporting its role as an early screening tool to identify at-risk
84 patients.

85

86

87

88

89

90

91

92

93

94

95

96

97

98

99

100

101

102

103

104

105 **Introduction**

106 Cerebral infarction is an uncommon but devastating complication of delayed cerebral
107 ischemia (DCI) after aneurysmal subarachnoid hemorrhage (aSAH)¹. Patients with DCI
108 and cerebral infarction following aSAH have particularly low rates of favorable functional
109 outcomes². Previously reported clinical factors associated with infarction after aSAH
110 have included aneurysm size³, volume of subarachnoid blood^{2, 4, 5}, diabetes¹, and the
111 presence of an external ventricular drain¹. The presence of angiographic vasospasm of
112 the large cerebral arteries has the strongest reported association with infarction after
113 aSAH^{2, 3, 6}.

114
115 Transcranial Doppler (TCD) measurements of blood flow velocities in the large cerebral
116 vessels are routinely used in neurological intensive care units as a non-invasive
117 screening tool to identify patients with vasospasm of the large cerebral arteries^{7, 8}. TCD
118 has a high estimated sensitivity (~90%) but moderate specificity (~70%) for identifying
119 cerebral vasospasm on conventional angiography⁹. Patients in neurological intensive
120 care units often undergo daily TCD velocity measurements for several weeks following
121 aSAH^{10, 11}, requiring a substantial investment in time and resources. In spite of this,
122 time-varying blood flow velocity trends in patients after aSAH have been only reported
123 in small samples of select patients¹² and have not yet been formally investigated for
124 their ability to predict cerebral infarction. Whether measurable vasospasm precedes the
125 development of infarction and can therefore serve as an alarm in at-risk patients
126 remains unknown.

127

128

129 In this study, we sought to characterize the time varying TCD velocity trends in a
130 retrospective cohort of aSAH patients at high risk for DCI, to determine whether time-
131 varying vasospasm severity is associated with risk of cerebral infarction, and to
132 investigate the performance characteristics of different time/severity cutoffs for
133 predicting cerebral infarction.

134

135 **Methods**

136 *Study Cohort*

137 We conducted a retrospective analysis of an IRB-approved, prospectively maintained
138 database of consecutive adult (age > 18) patients with confirmed aneurysmal SAH
139 admitted to an academic medical center between 2011 and 2020 (N = 307). Clinical and
140 demographic information was manually abstracted from the electronic medical record.
141 To enrich our sample for patients with vasospasm, we restricted our analysis to the
142 subset of patients with the mention of 'vasospasm' in any CT-angiogram, MR-
143 angiogram, or catheter-angiogram report during their hospital stay (N = 243, Figure 1).

144

145 *TCD Velocity Measurements*

146 We then cross-referenced this database with a separate, prospectively-maintained
147 database of TCD mean flow velocity (MFV) measurements at this same academic
148 medical center. N = 218 of these patients had at least one TCD study and were included
149 for further analysis (Figure 1). A handheld 2 MHz probe was used to insonate the M1
150 segment of the middle cerebral artery (MCA), the A1 segment of the anterior cerebral

151 artery (ACA), and the P1 and P2 segments of the poster cerebral artery (PCA)
152 bilaterally. The maximum MFV for each vessel and the date of the recording were
153 stored. Vasospasm severity was categorized based on reported MFV (cm/s) reference
154 ranges for each vessel¹³ as follows: MCA: mild 120 - 149, moderate 150 - 199, severe >
155 200; ACA: mild 100 - 129, moderate 130 - 149, severe > 150; PCA: mild 80 - 119,
156 moderate 120 - 159, severe > 160.

157

158 *Outcome Definition*

159 Our primary outcome was cerebral infarction caused by DCI. We first screened the
160 electronic medical record for infarction by the mention of 'stroke', 'infarction', or
161 'hypodensity' in radiology reports from any brain CT or MRI obtained during the
162 hospitalization. Each infarction (N = 55) was then adjudicated by two board-certified
163 neurologists (S.B.S. and I.M.). DCI-related infarctions (N = 27) were defined as those
164 that were 1) not present on the admission brain CT, 2) not present within 48 hours of a
165 surgical intervention, and 3) without another clearly identifiable proximate cause (Figure
166 1). The time of infarction was considered to be the post-admission day on which the
167 infarction was first radiologically documented. The vascular territory of the infarction was
168 defined by manual review of the image on which the infarction was first apparent.
169 Disagreements were resolved by consensus.

170

171 *Statistical Analysis*

172 All analyses were performed using RStudio1.1.442 (R Foundation for Statistical
173 Computing, Vienna, Austria; [http:// www.r-project.org](http://www.r-project.org)).

174

175 *Cohort Comparison*

176 Demographic and clinical characteristics between cohort patients with or without DCI-
177 related infarction were compared using two-sample t-tests (continuous variables) and χ^2
178 tests (categorical variables).

179

180 *Time-Varying Vasospasm Analysis*

181 We defined vasospasm ordinally (absent, mild, moderate, severe) by the most abnormal
182 vessel at the time of each TCD study. Using patient-level vasospasm trajectories
183 beginning on the day of admission ($T = 0$), a state plot was generated, indicating the
184 proportion of the cohort with each vasospasm severity level at each time point (R:
185 *TraMineR*). Pairwise dissimilarity values for each subject's vasospasm trajectory were
186 then computed using the 'optimal matching' metric with an insertion/deletion cost of 1
187 and substitution costs defined based on transition rates in the data (R: *TraMineR*).
188 Agglomerative hierarchical clustering of the distance matrix was then conducted using
189 Ward's method (R: *cluster*). The two most dissimilar clusters were then examined for
190 differences in prevalence of DCI-related infarction.

191

192 To determine if time-varying vasospasm severity was associated with infarction, we
193 used a Cox proportional-hazards model (R: *Survival*). Patients were censored either on
194 the day of infarction or on the last day of TCD data obtained during the hospitalization.
195 Our model included time-varying vasospasm severity and admission modified Fisher
196 scale score (mFS), the one covariate found to differ between patients with and without

197 infarction. To determine whether vasospasm severity within a particular vessel was
198 associated with risk of infarction in that vascular territory, we conducted a sensitivity
199 analysis with the most prevalent infarct subtype (right MCA, N = 11). For this sensitivity
200 analysis, we included as exposures time-varying right MCA vasospasm severity either
201 alone or with all of the following covariates: left MCA vasospasm severity, worst ACA
202 vasospasm severity and worst PCA vasospasm severity. The proportional hazards
203 assumption was checked and confirmed for each model (R: *survminer*, all $p > 0.15$).

204

205 To estimate the performance characteristics of static TCD thresholds for predicting
206 subsequent infarction, we computed the sensitivity (Sn), specificity (Sp), positive
207 predictive value (PPV), and negative predictive value (NPV) and plotted receiver
208 operating characteristic (ROC) curves for each level of ordinal vasospasm severity on
209 hospital days 1 through 14. An optimal cut point was chosen based on the Youden's J
210 statistic.

211

212 **Results**

213 *Cohort Characteristics*

214 Among 218 patients with aSAH, radiographic vasospasm, and at least one TCD study,
215 27 (12%) had DCI-related cerebral infarction (Figure 1, Table 1). Patients with infarction
216 were similar to those without infarction except for having higher mFS scores (Table 1, p
217 = 0.02). The median time between admission and infarction was 8 days (IQR: 6-10,
218 Table 1) and most infarctions (85%) occurred in the anterior circulation (Table 1).

219

220 *TCD-measured Vasospasm Severity Trends*

221 State plots show a broad peak in the incidence of TCD-measured vasospasm between
222 7 and 21 days (Figure 2A). The two most disparate clusters of TCD velocity trajectories
223 were a group with mild, delayed spasm (Cluster 1, Figure 2B) and a group with earlier,
224 severe spasm (Cluster 2, Figure 2B). 8% of Cluster 1 patients had an infarction
225 compared to 20% of Cluster 2 patients ($\chi^2_{(1,218)} = 5.4$, $p = 0.02$). Patients with infarction
226 developed TCD-measured vasospasm earlier (*with*: median 3 days, IQR: [2, 5], *without*:
227 4 [3, 6], $p = 0.03$) and reached peak spasm earlier (*with*: 6 days [4, 8], *without*: 7 [5, 11],
228 $p = 0.04$) than those without infarction.

229

230 *TCD-measured Vasospasm as a Predictor of Infarction*

231 Controlling for the mFS, the time-varying vasospasm severity was associated with the
232 development of infarction [adjusted Hazard Ratio (aHR) 1.9 per unit increase in spasm
233 severity, 95% CI: 1.3 - 2.6, $p = 0.0004$, unadjusted HR 2.0, (1.4, 2.8), Figure 3]. To
234 determine if the severity of vasospasm in a particular vessel was associated with the
235 risk of infarction in that vascular territory, we conducted a sensitivity analysis using the
236 most prevalent subgroup of infarctions: those occurring within the right MCA territory (N
237 = 11). Vasospasm severity within the right MCA was associated with right MCA territory
238 infarction (HR 2.5, [1.5, 4.2], $p = 0.0005$), and trended towards significance even after
239 controlling for the vasospasm severity in all other vascular territories (aHR 1.8, [1.0, 3.4]
240 $p = 0.05$).

241

242 Finally, we sought to evaluate the infarct-prediction performance of TCD-measured
243 vasospasm severity thresholds at specific time points during the hospitalization. Optimal
244 discrimination was achieved using a threshold of at least mild vasospasm severity on
245 hospital day 4 (Figure 4A, *red circle*, Sn 59%, Sp 67%), though the PPV was only 25%.
246 This time/severity threshold also had the highest NPV (92%) for ruling out the
247 subsequent development of infarction. Any thresholds with a PPV greater than 25%
248 occurred at sensitivities under 25% (Figure 4B).

249

250 **Discussion**

251 We evaluated TCD-based cerebral blood flow velocity trends in a large cohort of aSAH
252 patients, identifying an association between vasospasm severity and DCI-related
253 cerebral infarction. We confirmed previous reports that vasospasm incidence rises and
254 peaks between 7 and 21 days after the initial hemorrhage. Patients with infarction were
255 enriched in a data-driven cluster of vasospasm trajectories with earlier vasospasm
256 onset times and shorter times to peak vasospasm severity. Controlling for clinical SAH
257 grade, TCD-measured vasospasm severity was associated with risk of infarction. The
258 severity of spasm in a given vessel was associated with risk of infarction in the territory
259 supplied by that vessel. Finally, we characterized a range of TCD time and severity
260 thresholds for predicting infarction, finding that the presence of at least mild vasospasm
261 on hospital day 4 has the best discriminative value.

262

263 *Vasospasm Time-Course*

264 Our report aligns well with descriptions of vasospasm time course derived from classic
265 angiographic studies of vessel diameter in aSAH patients¹⁴. Our work benefits from a
266 higher sampling rate (daily measurements) for deriving patient-level trajectories than is
267 possible with conventional angiography. While an analysis of angiography data has
268 suggested that vasospasm does not extend beyond 12 days after aSAH¹⁴, we find that
269 elevated cerebral blood flow velocities persist longer than that.

270

271 *Association with Infarction and Predictive Characteristics*

272 Higher TCD-measured blood flow velocities are associated with higher rates of DCI-
273 related infarction. Furthermore, blood flow velocities within a particular vessel are
274 associated with risk of infarction in the territory supplied by that vessel, even controlling
275 for vasospasm severity in other vessels. While there is active debate about whether
276 large vessel vasospasm is a cause or epiphenomenon of DCI¹⁵, the spatial specificity of
277 these findings support a causal role.

278

279 Consistent with the known limitations of using TCD-measured elevated cerebral blood
280 flow velocities to identify angiographic vasospasm^{9, 16}, the optimal predictors of
281 infarction had much higher NPVs than PPVs. Flagging patients who reach at least
282 mildly severe vasospasm in any vessel by hospital day 4 would result in a low rate of
283 missed infarctions (8%), though only one in four of these patients would ultimately go on
284 to develop an infarction. This time/severity threshold could therefore be clinically useful
285 as a trigger to reduce the frequency of monitoring.

286

287 *Limitations*

288 DCI has been shown to associate with poor outcome after aSAH independently of
289 cerebral infarction². However, DCI is difficult to define objectively, particularly in a
290 retrospective cohort. While patients with infarction may only represent a subset of those
291 with DCI, they likely represent the most severe subset.

292

293 Given that we did not measure or account for spasmolytic treatments, the vasospasm
294 severities reported here should therefore be interpreted as a lower bound for the
295 untreated severity. We would expect this limitation to bias us towards the null. However,
296 if elevated TCD-measured blood flow velocities triggered an increased frequency of
297 interventions that can themselves cause infarction (iatrogenic blood pressure
298 augmentation, catheter angiograms), then a confound could be driving the positive
299 association. Furthermore, while we took precautions to avoid including infarctions that
300 were likely a consequence of the surgical treatment of the aneurysm, there were certain
301 cases occurring within 4 days of surgery where a post-surgical infarct was impossible to
302 exclude. However, this limitation should only reduce our power to identify significant
303 associations.

304

305 All time-varying analysis treated the admission day as the day of aneurysmal rupture. If
306 patients ruptured days before presenting to the hospital, their measured vasospasm
307 onset times would have been systematically earlier (relative to hospital admission day).
308 We would expect the probability of this occurring to be higher in patients with lower-
309 mFS hemorrhages, and thus higher in patients without DCI-related infarction. This

310 systematic error in measuring the post-bleed time would thus be more likely to bias us
311 against significant associations and towards worse predictive performance. We did not
312 record the presence of focal neurological deficits, the indication for obtaining brain
313 imaging, or the frequency of imaging obtained during the hospitalization. If patients with
314 DCI-related infarctions were more likely to have undergone MRI without being more
315 likely to have experienced a typical indication for scanning, then we may have missed a
316 certain proportion of DCI-related infarctions. However, this would only diminish the
317 significance of any measured findings.

318
319 Finally, these findings reflect a retrospective analysis of a single-center cohort, and thus
320 may have limited generalizability unless externally validated.

321
322 *Conclusions*

323 We provide the first systematic analysis of TCD velocity trends in a large, retrospective
324 dataset of aSAH patients. We demonstrate that vasospasm severity is associated with
325 the development of DCI-related cerebral infarction in a vessel-specific manner. Finally,
326 we show that a threshold of at least mild vasospasm severity on hospital day 4 has the
327 best performance characteristics for identifying patients at risk for developing cerebral
328 infarction.

329
330
331
332
333
334
335
336

337 **Acknowledgements**

338 none

339

340 **Source of funding**

341 RWR was supported by an NIH R25 (R25 NS065743) grant.

342

343 **Disclosures**

344 SBS, IM, SLR, MEM, RWR, PMRL, and RD report no relevant disclosures. HV is

345 employed by Marinus Pharmaceuticals.

346

347 **References**

- 348 1. Rabinstein AA, Weigand S, Atkinson JL, Wijdicks EF. Patterns of cerebral
349 infarction in aneurysmal subarachnoid hemorrhage. *Stroke* 2005;36:992-997.
- 350 2. Vergouwen MD, Ilodigwe D, Macdonald RL. Cerebral infarction after
351 subarachnoid hemorrhage contributes to poor outcome by vasospasm-dependent and -
352 independent effects. *Stroke* 2011;42:924-929.
- 353 3. Crowley RW, Medel R, Dumont AS, et al. Angiographic vasospasm is strongly
354 correlated with cerebral infarction after subarachnoid hemorrhage. *Stroke* 2011;42:919-
355 923.
- 356 4. Mizukami M, Takemae T, Tazawa T, Kawase T, Matsuzaki T. Value of computed
357 tomography in the prediction of cerebral vasospasm after aneurysm rupture.
358 *Neurosurgery* 1980;7:583-586.
- 359 5. Fisher CM, Kistler JP, Davis JM. Relation of cerebral vasospasm to
360 subarachnoid hemorrhage visualized by computerized tomographic scanning.
361 *Neurosurgery* 1980;6:1-9.
- 362 6. Brown RJ, Kumar A, Dhar R, Sampson TR, Diringer MN. The relationship
363 between delayed infarcts and angiographic vasospasm after aneurysmal subarachnoid
364 hemorrhage. *Neurosurgery* 2013;72:702-707; discussion 707-708.
- 365 7. Vora YY, Suarez-Almazor M, Steinke DE, Martin ML, Findlay JM. Role of
366 transcranial Doppler monitoring in the diagnosis of cerebral vasospasm after
367 subarachnoid hemorrhage. *Neurosurgery* 1999;44:1237-1247; discussion 1247-1238.
- 368 8. Grosset DG, Straiton J, du Trevou M, Bullock R. Prediction of symptomatic
369 vasospasm after subarachnoid hemorrhage by rapidly increasing transcranial Doppler
370 velocity and cerebral blood flow changes. *Stroke* 1992;23:674-679.
- 371 9. Kumar G, Shahripour RB, Harrigan MR. Vasospasm on transcranial Doppler is
372 predictive of delayed cerebral ischemia in aneurysmal subarachnoid hemorrhage: a
373 systematic review and meta-analysis. *J Neurosurg* 2016;124:1257-1264.
- 374 10. Alexandrov AV, Sloan MA, Tegeler CH, et al. Practice standards for transcranial
375 Doppler (TCD) ultrasound. Part II. Clinical indications and expected outcomes. *J*
376 *Neuroimaging* 2012;22:215-224.
- 377 11. Springborg JB, Frederiksen HJ, Eskesen V, Olsen NV. Trends in monitoring
378 patients with aneurysmal subarachnoid haemorrhage. *Br J Anaesth* 2005;94:259-270.
- 379 12. Luft AR, Buitrago MM, Torbey M, Bhardwaj A, Razumovsky A. Biphasic cerebral
380 blood flow velocity profile in patients with aneurysmal subarachnoid hemorrhage.
381 *Neurocrit Care* 2004;1:455-459.
- 382 13. Babikian VL, Wechsler LR. Transcranial doppler ultrasonography. St. Louis:
383 Mosby-Year Book, 1999.
- 384 14. Weir B, Grace M, Hansen J, Rothberg C. Time course of vasospasm in man. *J*
385 *Neurosurg* 1978;48:173-178.
- 386 15. Etminan N, Vergouwen MD, Ilodigwe D, Macdonald RL. Effect of pharmaceutical
387 treatment on vasospasm, delayed cerebral ischemia, and clinical outcome in patients
388 with aneurysmal subarachnoid hemorrhage: a systematic review and meta-analysis. *J*
389 *Cereb Blood Flow Metab* 2011;31:1443-1451.

390 16. Frontera JA, Fernandez A, Schmidt JM, et al. Defining vasospasm after
391 subarachnoid hemorrhage: what is the most clinically relevant definition? *Stroke*
392 2009;40:1963-1968.

393

394

395

396

397

398 **Tables**
399

| Table 1: Cohort Characteristics | | | |
|--|--------------------------|----------------------|-------------|
| | No infarction (n=191) | Infarction (n=27) | P-value |
| Age, mean (95% CI) | 58 (56, 60) | 52 (47, 58) | 0.09 |
| Female, n (%) | 155 (81%) | 21 (78%) | 0.9 |
| White Race | 142 (74%) | 22 (82%) | 0.7 |
| Current Smoker | 72 (38%) | 13 (48%) | 0.4 |
| HTN | 95 (50%) | 11 (41%) | 0.5 |
| <i>Aneurysm location</i> | | | |
| MCA | 34 (18%) | 3 (11%) | 0.3 |
| ACA | 64 (34%) | 14 (52%) | |
| ICA | 66 (35%) | 8 (30%) | |
| Posterior | 27 (14%) | 2 (7%) | |
| <i>Hunt & Hess Grade</i> | | | |
| 1 | 37 (19%) | 2 (7%) | 0.06 |
| 2 | 54 (28%) | 3 (11%) | |
| 3 | 44 (23%) | 9 (33%) | |
| 4 | 33 (17%) | 9 (33%) | |
| 5 | 22 (12%) | 4 (15%) | |
| <i>Modified Fisher Scale</i> | | | |
| 1 | 10 (5%) | 0 (0%) | 0.02 |
| 2 | 15 (8%) | 1 (4%) | |
| 3 | 79 (41%) | 5 (19%) | |
| 4 | 86 (45%) | 21 (78%) | |
| Treatment with Clip | 113 (59%) | 17 (63%) | 0.9 |
| Time to Infarction (days), median (IQR) | - | 8 (6, 10) | -- |
| <i>Infarct Vascular Territory</i> | | | |
| MCA | - | 14 (52%) | -- |
| ACA | - | 9 (33%) | |
| PCA | - | 5 (19%) | |
| Basilar | - | 1 (4%) | |

400

401

402

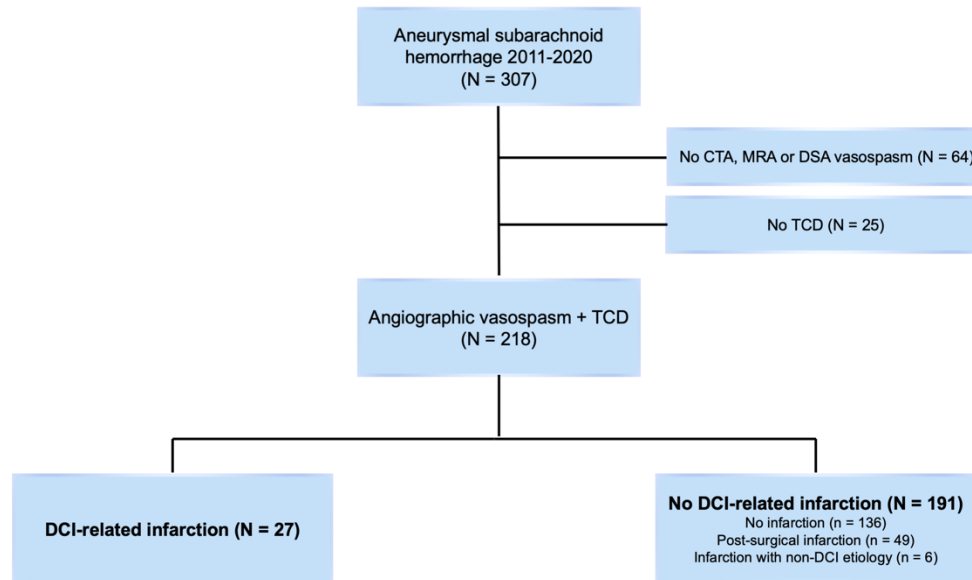
403

404

405

406

Figure 1: Study Flowchart



407

408

409 Figure 1: Study Flowchart

410 Abbreviations: CTA: Computed Tomography Angiography, MRA: Magnetic Resonance

411 Angiography, DSA: Digital Subtraction Angiography, TCD: Transcranial Doppler, DCI:

412 Delayed Cerebral Ischemia

413

414

415

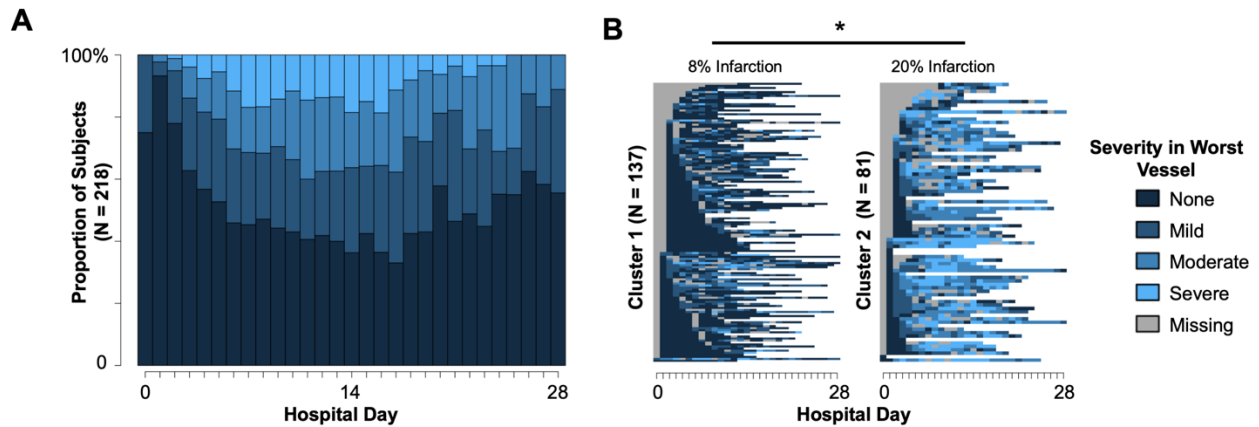
416

417

418

419

Figure 2: Severity of TCD-measured vasospasm after SAH



420

421 Figure 2: Severity of TCD-measured vasospasm after SAH

422 (A) State plot of the proportion of the cohort with each ordinal level of vasospasm

423 severity (absent, mild, moderate, severe) between day of admission (0) and hospital

424 day 28. (B) Individual patient trajectories from the two most-dissimilar clusters of

425 vasospasm trajectories. Missing is shaded grey. Rates of infarction significantly differed

426 between clusters.

427

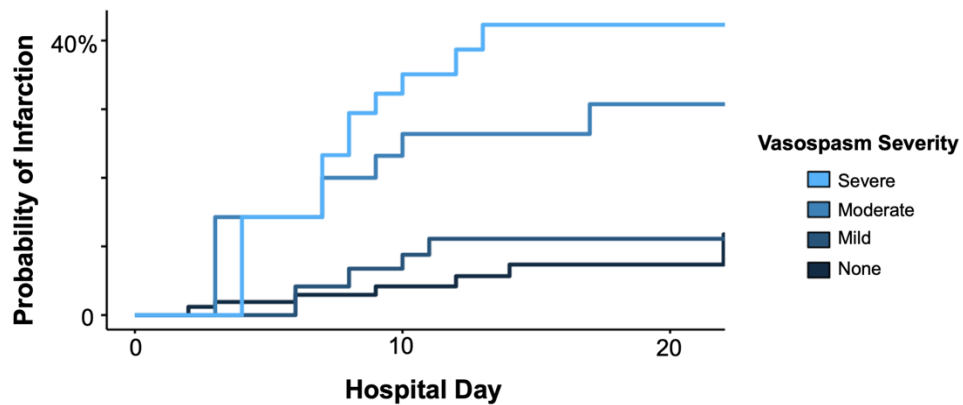
428

429

430

431

Figure 3: Risk of infarction increases with vasospasm severity



432

433 Figure 3: Risk of infarction increases with vasospasm severity

434 Kaplan-Meier curves for the probability of infarction by time-varying vasospasm severity.

435

436

437

438

439

440

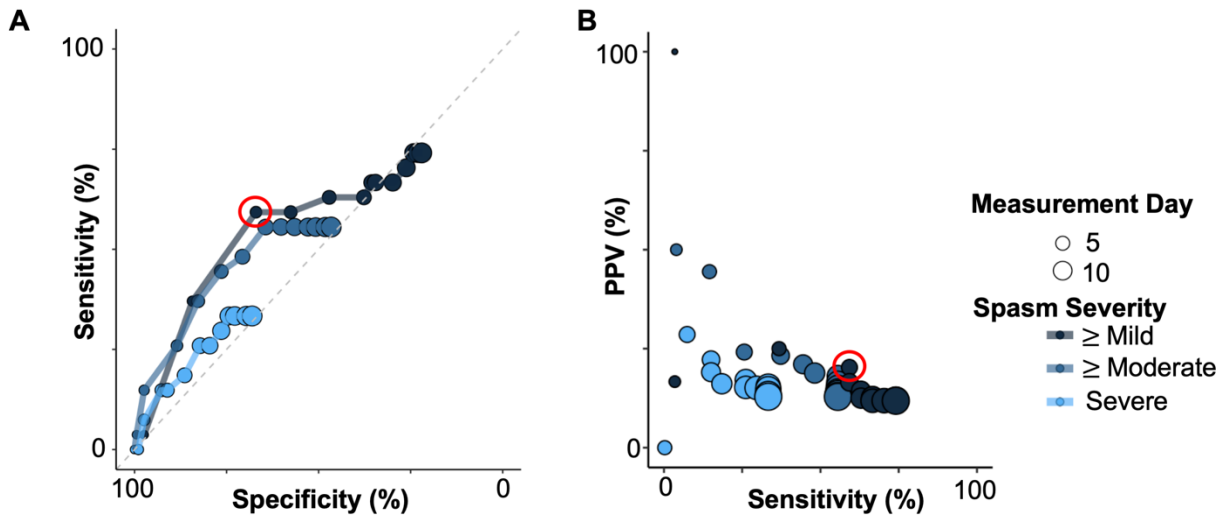
441

442

443

444

Figure 4: Performance characteristics of different time/severity thresholds



445

446

447 Figure 4: Performance characteristics of different time/severity thresholds

448 (A) Receiver Operator Characteristic (ROC) plots for varying vasospasm severity (color)

449 and post-admission day (circle size) thresholds for predicting infarction. The Youden-J

450 statistic is maximized at a threshold of at least mild severity on hospital day 4 (red

451 circle). (B) The positive predictive value (PPV) of each threshold is plotted against its

452 sensitivity, with the optimal discriminating point from (A) indicated within the red circle.

453