

Supplementary Table 1. Patient and control characteristics. ND = not determined. NA = not applicable.

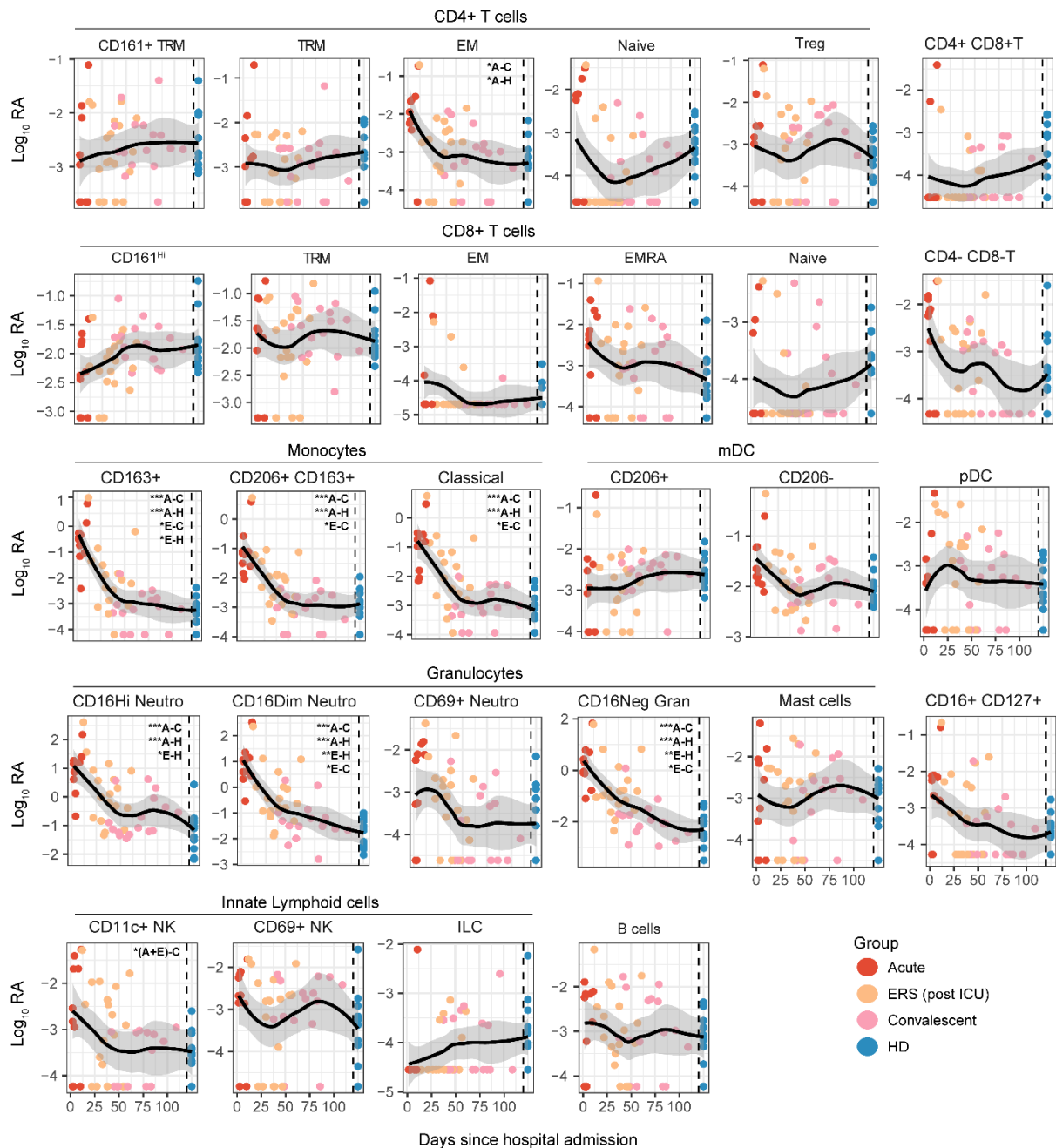
	Patients (n=29)	Healthy donors (n=12)
Female sex (%)	9 (31.0)	4 (33.3)
Median age (range)	62 (19-78)	64 (60-72)
Median BMI (min-max)	28.1 (17.6-42.3)	ND
Disease course		NA
Median days of hospital stay (range)	21 (1-67)	
ICU stay	16	
Live discharge	28	
Transfer to other hospital	1	
Comorbidities		ND
Chronic cardiac disease	6	
Hypertension	6	
Chronic obstructive pulmonary disease	2	
Asthma	4	
Chronic kidney disease	1	
Chronic liver disease	2	
Chronic neurological disorder	2	
Diabetes	10	
Malignant neoplasm	6	
Thromboembolic event	6	
Coagulopathy	1	
Medication		ND
Azathioprine	1	
Beclomethasone	2	
Chloroquine	1	
Dexamethasone	7	
Fluticasone	3	
Hydrochlorothiazide	1	
Hydrocortisone	2	
Hydroxychloroquine	3	
Metamizole	2	
Prednisolone	3	

Supplementary Table 2. List of antibodies used for mass cytometry

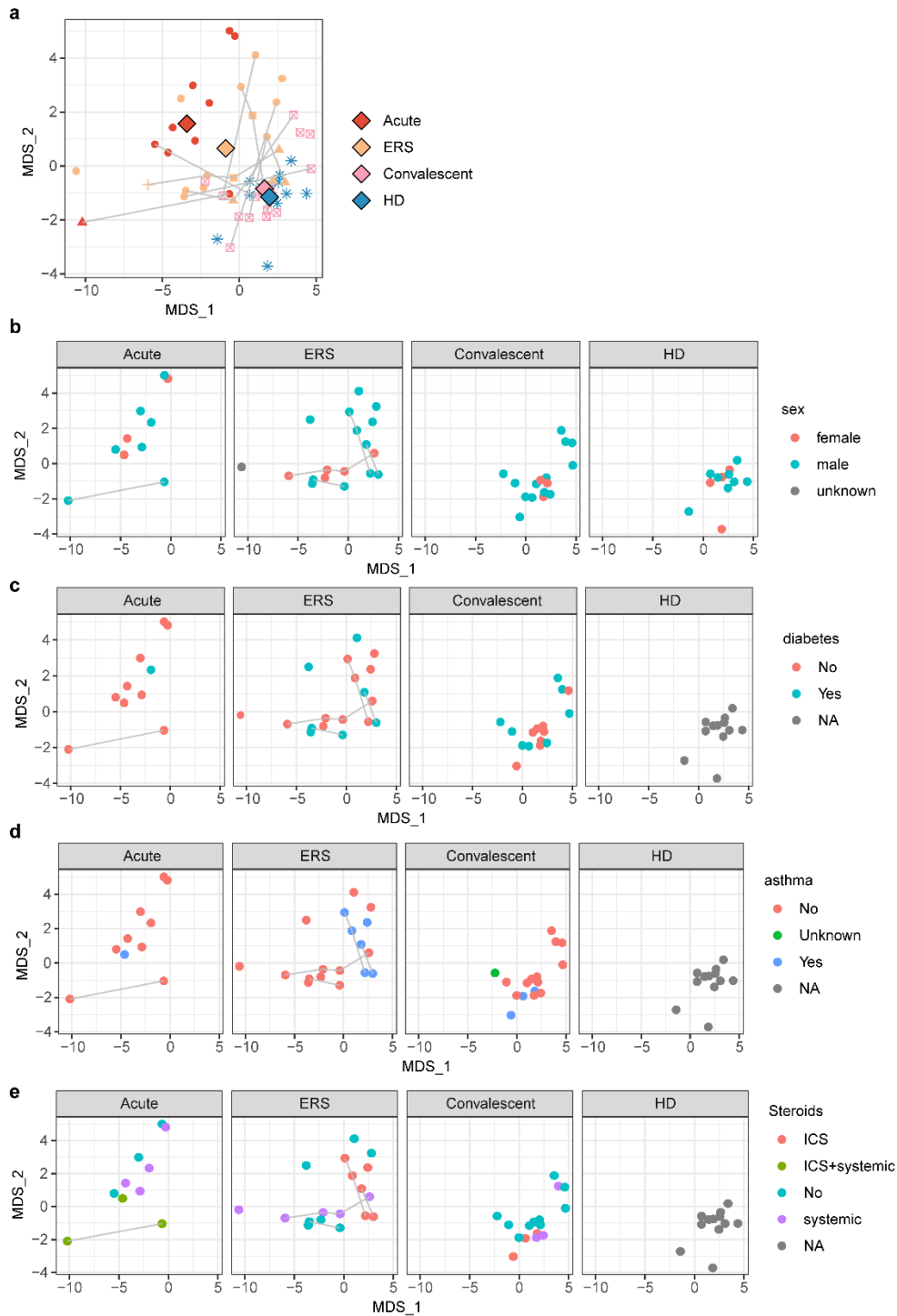
Label	Specificity	Clone	Antibody vendor	Catalogue number	Dilution
⁸⁹ Y	CD45	HI30	Fluidigm	3089003B	1/200
¹¹⁵ In	CD5	UCHT2	Biolegend	300602	1/100
¹⁴¹ Pr	CD196 (CCR6)	G034E3	Fluidigm	3141003A	1/200
¹⁴² Nd	CD19	HIB19	Fluidigm	3142001B	1/200
¹⁴³ Nd	cPARP	F21-852	Fluidigm	3143011A	1/100
¹⁴⁴ Nd	CD66b	REA306	Miltenyi Biotech	130-108-019	1/50
¹⁴⁵ Nd	CD4	RPA-T4	Biolegend	300541	1/100
¹⁴⁶ Nd	CD8a	RPA-T8	Biolegend	301053	1/200
¹⁴⁷ Sm	CD117 (C-kit)	104D2	BioLegend	313202	1/100
¹⁴⁸ Nd	CD14	M5E2	Biolegend	301843	1/100
¹⁴⁹ Sm	CD25 (IL-2Ra)	2A3	Fluidigm	3149010B	1/100
¹⁵⁰ Nd	CD185 (CXCR5)	J252D4	BioLegend	356902	1/100
¹⁵¹ Eu	CD123	6H6	Fluidigm	3151001B	1/100
¹⁵² Sm	TCR $\gamma\delta$	11F2	Fluidigm	3152008B	1/50
¹⁵³ Eu	CD7	CD7-6B7	Biolegend	343111	1/100
¹⁵⁴ Sm	CD163	GHI/61	Biolegend	333602	1/100
¹⁵⁵ Gd	CD69	FN50	BioLegend	310939	1/200
¹⁵⁷ Gd	ACE-2	AC18F	Novus Biologicals	NBP2-80035-100UG	1/100
¹⁵⁸ Gd	CD209	9E9A8	Biolegend	330102	1/100
¹⁵⁹ Tb	CD197 (CCR7)	G043H7	Biolegend	353237	1/200
¹⁶⁰ Gd	Epcam	AUA1	Invitrogen	MA5-13917	1/50
¹⁶¹ Dy	KLRG1 (MAFA)	REA261	Miltenyi Biotech	Special order	1/100
¹⁶² Dy	CD11c	Bu15	Biolegend	337221	1/200
¹⁶³ Dy	CD152 (CTLA-4)	BNI3	BioLegend	369602	1/100
¹⁶⁴ Dy	CD161	HP-3G10	Biolegend	339919	1/100
¹⁶⁵ Ho	CD127 (IL-7Ra)	AO19D5	Fluidigm	3165008B	1/200
¹⁶⁶ Er	Tbet	4B10	BioLegend	644825	1/100
¹⁶⁷ Er	CD27	O323	Biolegend	302839	1/200
¹⁶⁸ Er	HLA-DR	L243	Biolegend	307651	1/200
¹⁶⁹ Tm	CD45RA	HI100	Fluidigm	3169008B	1/100
¹⁷⁰ Er	CD3	UCHT1	Biolegend	300443	1/100
¹⁷¹ Yb	CD206	15-2	Biolegend	321127	1/200
¹⁷² Yb	CD38	HIT2	Biolegend	303535	1/200
¹⁷³ Yb	CD45RO	UCHL1	Biolegend	304239	1/100
¹⁷⁴ Yb	CD335 (NKp46)	92E	Biolegend	331902	1/100
¹⁷⁵ Yb	PD-1	EH12.2H7	Biolegend	329941	1/100
¹⁷⁶ Yb	CD56	B159/NCAM16.2	BD Biosciences	555514	1/100
¹⁹⁸ Pt	CD86	IT2.2	BioLegend	305435	1/200
²⁰⁹ Bi	CD16	3G8	Fluidigm	3209002B	1/200
¹⁰⁶ Cd	B2M	2M2	BioLegend	316302	1/50
¹¹⁰ Cd	B2M	2M2	BioLegend	316302	1/50
¹¹¹ Cd	B2M	2M2	BioLegend	316302	1/50
¹¹² Cd	B2M	2M2	BioLegend	316302	1/50
¹¹⁴ Cd	B2M	2M2	BioLegend	316302	1/50
¹¹⁶ Cd	B2M	2M2	BioLegend	316302	1/50

Supplementary table 3. See supplementary Excel file. Results from statistical model comparing 3 groups: all hospitalized patients, convalescence stage 5-6 weeks post discharge, and healthy donors. Results are from linear mixed model, using log-transformed cell numbers divided by epithelial cells, using groups as fixed effects and donors as random effects to account for repeated sampling. Healthy donors were used as base group. Estimates and standard errors are from log₁₀-transformed values. P-values are calculated using post-hoc testing with 'emmeans' package in R, followed by Tukey multiple testing correction. Both uncorrected and Benjamini-Hochberg corrected p-values for comparing 8 lineages or 26 subsets are given. Populations that are lineages are indicated in yellow. Group estimates above or below 0.5 log difference from healthy donors are highlighted, as well as p-values below 0.05.

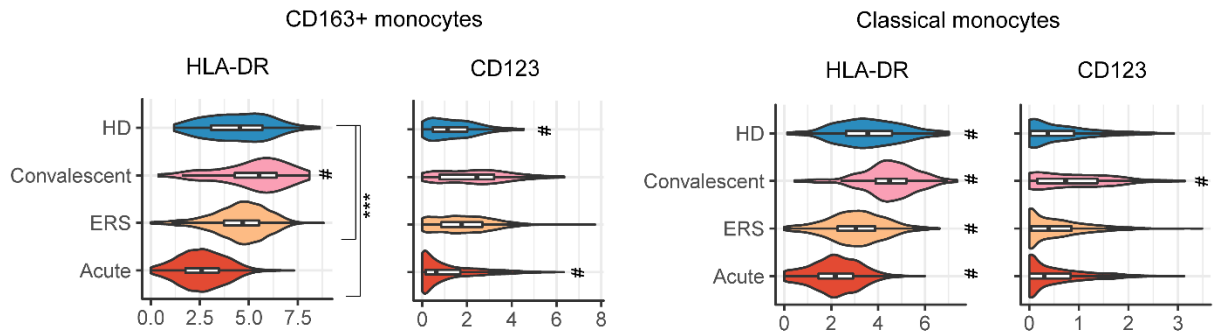
Supplementary table 4. See supplementary Excel file. Results from statistical model comparing the 4 groups (acute hospitalization, post ICU/early recovery stage, convalescence stage 5-6 weeks post discharge, and healthy donors). Results are from linear mixed model, using log-transformed cell numbers divided by epithelial cells, using groups as fixed effects and donors as random effects to account for repeated sampling. Healthy donors were used as base group. Estimates and standard errors are from log₁₀-transformed values. P-values are calculated using post-hoc testing with 'emmeans' package in R, followed by Tukey multiple testing correction. Both uncorrected and Benjamini-Hochberg corrected p-values for comparing 8 lineages or 26 subsets are given. Populations that are lineages are indicated in yellow. Group estimates above or below 0.5 log difference from healthy donors are highlighted, as well as p-values below 0.05.



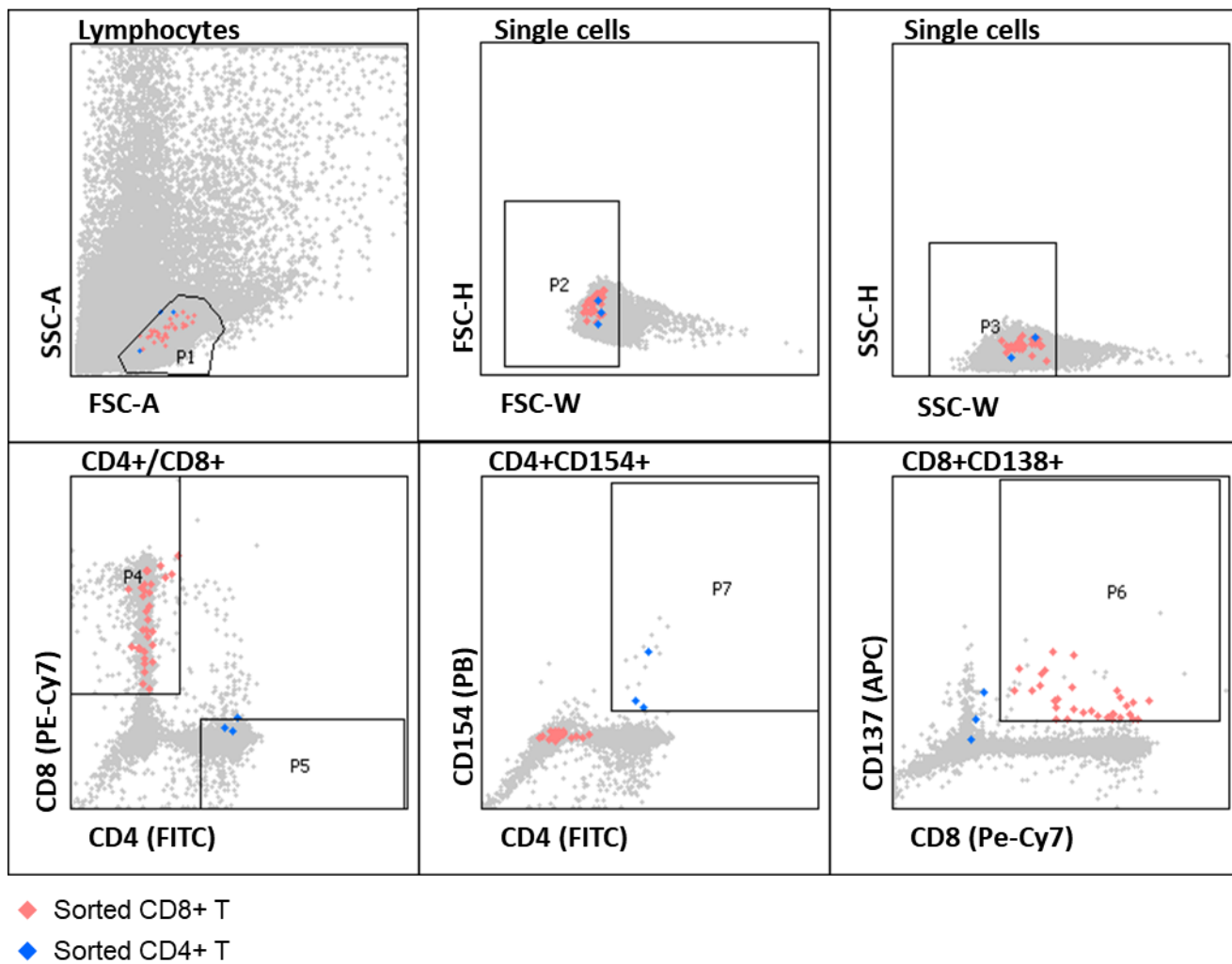
Supplementary figure 1. Time plots of cell subsets relative to hospital admission. Cell subset abundance during acute COVID-19 (red, 10 samples from 9 patients), during the early recovery phase (ERS, post ICU but still in hospital, orange, 18 samples from 11 patients $n = 11$), or in COVID-19 convalescence (5-6 weeks post hospital discharge, pink, $n=16$) or healthy controls (blue, $n=12$). Samples are plotted against day of hospital admission, with healthy donors plotted at the right axis separated by a dashed line. * $p < 0.05$, ** $p < 0.01$, *** $p < 0.001$, by linear-mixed model with group as fixed effect and individuals as random effect, with post-hoc testing and Tukey multiple testing correction followed by Benjamini-Hochberg correction for comparing multiple subsets. A = acute (hospitalized), E = early recovery stage, C = convalescent, 5-6 weeks post discharge, H = healthy donor. NK = natural killer cells. ILC = innate lymphoid cells, mDC = myeloid dendritic cells, pDC = plasmacytoid dendritic cells, Neutro = neutrophils, Trm = Tissue-resident memory, EM = effector memory, EMRA = effector memory re-expressing CD45RA. Treg = regulatory T cells.



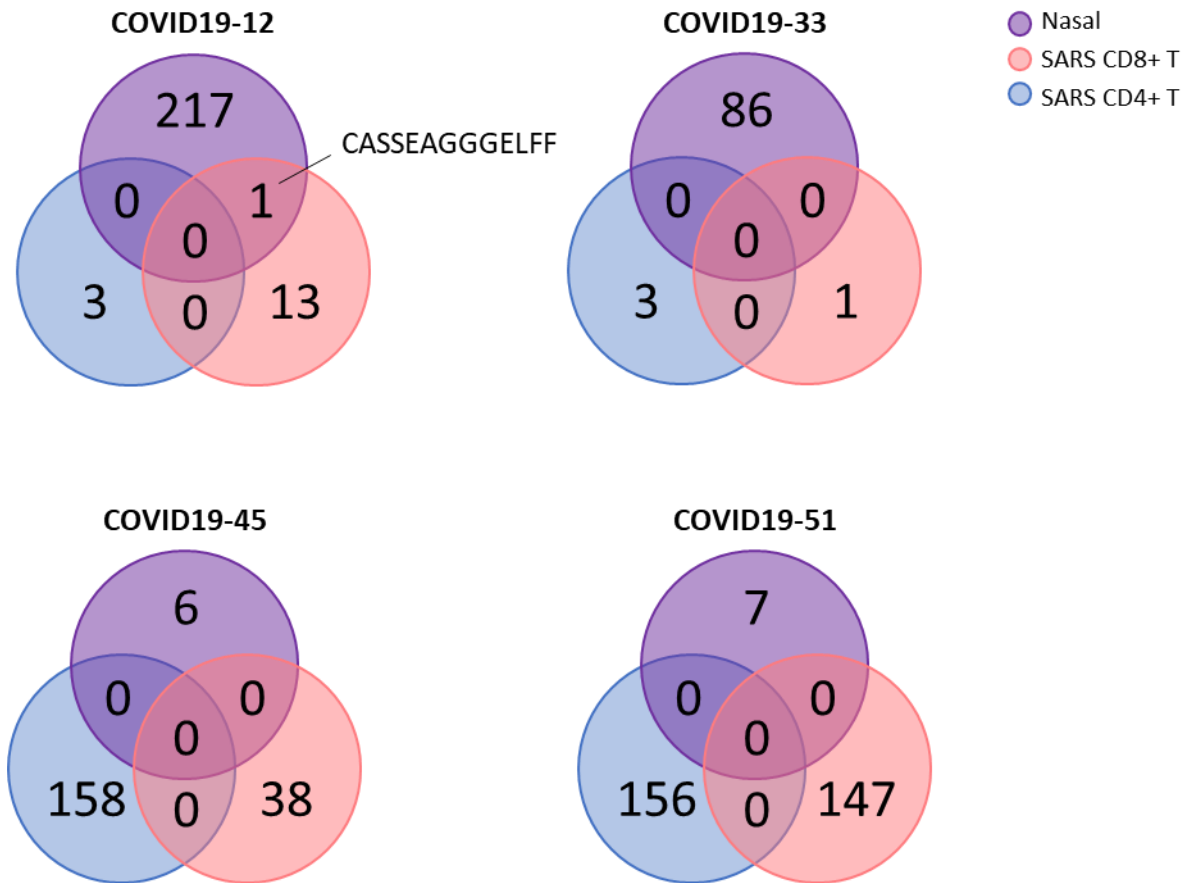
Supplementary figure 2. Multi-dimensional scaling of all nasal subsets. **a)** Clustering of all nasal samples based on abundance of all cellular subsets, colored by group. Acute COVID-19 (red, $n=9$), during the early recovery phase (ERS, post ICU, orange, $n=11$), or in COVID-19 convalescence (5-6 weeks post hospital discharge, pink, $n=16$) or healthy controls (blue, $n=12$). Individual samples are shown with repeated samples per donor connected by lines. Centroids are shown per group as large diamonds. Per group faceted representation of the same scaling colored by covariates **b)** sex, **c)** diabetes, **d)** asthma, **e)** steroid usage. For these only repeated sample per group are shown and not across groups, e.g. from ERS to convalescence.



Supplementary figure 3. Expression of HLA-DR and CD123 on CD163+ and CD163- monocytes. Markers are shown as violin plots, with box plots inlaid per group. **** $p < 0.001$, # $p < 0.001$ compared to all other groups, using pairwise Wilcoxon test and Bonferroni correction for multiple testing. HD = healthy donors. ERS = early recovery stage.



Supplementary Figure 4. Sorting of SARS-CoV-2 specific T cells gating strategy.

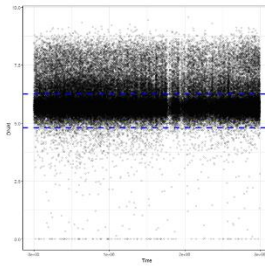


Supplementary Figure 5. TCR clonotype numbers identified in nasal cells and sorted SARS-CoV-2 specific peripheral blood cells. Each of the Venn diagrams represents the samples from a convalescent patient. The number of clones per cell type (total nasal cells, purple), SARS-CoV-2 specific CD8⁺ T cells (red) and SARS-CoV-2 specific CD4⁺ T cells (blue) are depicted in Venn diagrams for 4 individuals. An overlapping TCR was observed for patient 12 (top left), but not for the other 3 COVID-19 patients for which we attempted to match TCR sequences. This was likely due to the small TCR repertoire that was obtained in either the nasal scrapes (<10 clones for 2 individuals, bottom row) or SARS-CoV-2 reactive T cell subsets (<5 clones for 1 individual, top right).

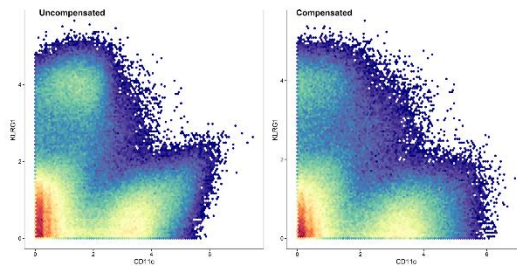
Bead-normalized fcs files



Clean up (Gaussian parameter, beads, DNA)



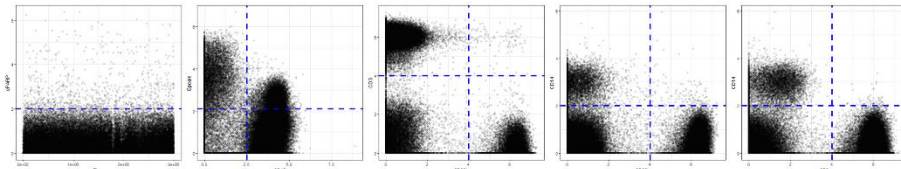
Compensation (Catalyst)



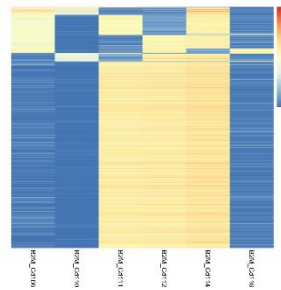
Bi-axial plot of 2 markers before and after compensation



Removal cPARP+ apoptotic cells, split immune cells (CD45+) and epithelial cells (EpCAM+), removal of doublets (CD66b+CD14+, CD66b+CD3+, CD3+CD14+)



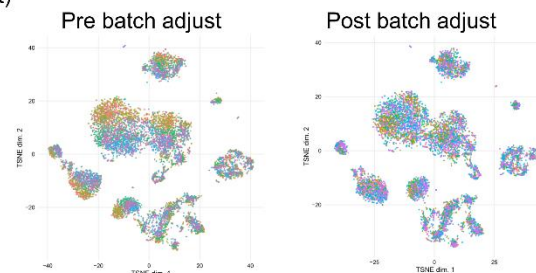
Debarcoding (Catalyst)



Heatmap of marker expression per barcode



Batch correction using reference sample (BatchAdjust)



tSNE plots of reference sample before and after batch correction (colours indicate batches)



Hierarchical SNE clustering

Supplementary figure 6. CyTOF pre-processing pipeline. Sequential steps in prior to data clustering are shown.