

## **Association of in-hospital use of ACE-I/ARB and COVID-19 outcomes in African American population**

Shilong Li<sup>1†</sup>, PhD; Rangaprasad Sarangarajan<sup>2†</sup>, PhD; Tomi Jun<sup>3</sup>, MD; Yu-Han Kao<sup>1</sup>, PhD; Zichen Wang<sup>1</sup>, PhD; Emilio Schadt<sup>1</sup>, BS; Michael A. Kiebish<sup>2</sup>, PhD; Elder Granger<sup>2</sup>, MD; Niven R. Narain<sup>2</sup>, PhD; Rong Chen<sup>1,4</sup>, PhD; Eric E. Schadt<sup>1,4\*</sup>, PhD; Li, Li<sup>1,4\*</sup>, MD

<sup>1</sup>Sema4, Stamford, CT, USA.

<sup>2</sup>BERG, 500 Old Connecticut Path, Bldg B 3<sup>rd</sup> Floor, Framingham, MA, USA.

<sup>3</sup>Division of Hematology & Medical Oncology, Icahn School of Medicine at Mount Sinai, New York, NY, USA.

<sup>4</sup>Department of Genetics and Genomic Sciences, The Icahn Institute for Genomics and Multiscale Biology, Icahn School of Medicine at Mount Sinai, New York, NY, USA.

<sup>†</sup>Authors contributed equally

\*Corresponding authors. E-mail: [li.li@sema4.com](mailto:li.li@sema4.com); [eric.schadt@sema4.com](mailto:eric.schadt@sema4.com)

Manuscript text word count: 3,400

## **Abstract (325 words)**

**Importance:** The *ACE* D allele is more prevalent among African Americans (AA) compared to other races/ethnicities and has previously been associated with severe COVID-19 pathogenesis through excessive ACE1 activity. ACE-I/ARBs may counteract this mechanism, but their association with COVID-19 outcomes has not been specifically tested in the AA population.

**Objectives:** To determine whether the use of ACE-I/ARBs is associated with COVID-19 in-hospital mortality in AA compared with non-AA population.

**Design, Setting, and Participants:** In this observational, retrospective study, patient-level data were extracted from the Mount Sinai Health System's (MSHS) electronic medical record (EMR) database, and 6,218 patients with a laboratory-confirmed COVID-19 diagnosis from February 24 to May 31, 2020 were identified as ACE-I/ARB users.

**Exposures:** Patients with an active prescription from January 1, 2019 up to the date of admission for ACE-I/ARB (outpatient use) and patients administered ACE-I/ARB during hospitalization (in-hospital use) were identified.

**Main Outcomes and Measures:** The primary outcome was in-hospital mortality, assessed in the entire, AA, and non-AA population.

**Results:** Of the 6,218 COVID-19 patients, 1,138 (18.3%) were ACE-I/ARB users. In a multivariate logistic regression model, ACE-I/ARB use was independently associated with reduced risk of in-hospital mortality in the entire population (OR, 0.655; 95% CI, 0.505-0.850; P=0.001), AA population (OR, 0.44; 95% CI, 0.249-0.779; P=0.005), and non-AA population (OR, 0.748, 95% CI, 0.553-1.012, P=0.06). In the AA population, in-hospital use of ACE-I/ARBs was associated with improved mortality (OR, 0.378; 95% CI, 0.188-0.766; P=0.006) while outpatient use was not (OR, 0.889; 95% CI, 0.375-2.158; P=0.812). When analyzing each medication class separately, ARB in-hospital use was significantly associated with reduced in-hospital mortality in the AA population (OR, 0.196; 95% CI, 0.074-0.516; P=0.001), while ACE-I use was not associated with impact on mortality in any population.

**Conclusion and Relevance:** In-hospital use of ARBs was associated with a significant reduction in in-hospital mortality among COVID-19-positive AA patients. These results support further investigation of ARBs to improve outcomes in AA patients at high risk for COVID-19-related mortality.

## Introduction

The current COVID-19 pandemic is expected to reduce USA life expectancy in 2020 by 1.13 years, although life expectancy reductions in African American (AA) and Hispanic populations are estimated to be 3 to 4 times higher than among Caucasians.<sup>1</sup> While the U.S. African American and Hispanic individuals make up approximately 13.4% and 18.5% of the US population, respectively, they constitute roughly 21% and 22%, respectively, of COVID-19 deaths reported to the National Center for Health Sciences (NCHS).<sup>2</sup> Socioeconomic factors contribute to these disparities, with 19.7% AA and 16.2% Hispanic individuals, disproportionately represented among essential occupations.<sup>3</sup> However, it remains unclear whether population differences in the prevalence of genetic risk variants may also contribute to disparate outcomes.

Several studies have attempted to delineate the genetic basis of susceptibility to COVID-19 clinical syndromes.<sup>4-7</sup> Epidemiological analyses have suggested that polymorphisms in the *ACE* gene, which encodes the angiotensin converting enzyme 1 (ACE1), are related to the incidence and mortality from COVID-19 at the national level.<sup>8-11</sup> The insertion (I) or deletion (D) of a 287 base pair sequence in intron 16 of the *ACE* gene results in three possible genotypes: DD or II homozygotes, or ID heterozygotes. The D allele has been associated with increased *ACE1* expression in a dose-dependent manner, such that compared to II homozygotes, ID heterozygotes and DD homozygotes have 31% and 65% more ACE1 protein expression in blood serum, respectively.<sup>12</sup> Data from predominantly European nations suggests that there is a population-level correlation between the prevalence of the D allele and incidence of COVID-19.<sup>10</sup>

The SARS-CoV-2 virus enters cells by binding to angiotensin-converting enzyme 2 (ACE2). ACE1 and ACE2 have counter-regulatory roles in the renin-angiotensin (RAS) system: ACE1 converts angiotensin I to angiotensin-II, the primary effector of the RAS system, while ACE2 inactivates angiotensin-II. Since SARS-CoV-2 viral binding and entry via ACE2 leads to decreased ACE2 availability, it has been hypothesized that an imbalance in ACE1 and ACE2 activity (leading to excess angiotensin-II) may contribute to the pathogenesis of severe COVID-19.<sup>13</sup> This imbalance may be further exacerbated by increased *ACE1* expression in the presence of the *ACE* D allele. This mechanistic hypothesis predicts that either ACE1 inhibition or angiotensin-II receptor blockade would have a beneficial effect on COVID-19 outcomes, especially in populations with high prevalence of the *ACE* D allele.<sup>13</sup>

Early in the COVID-19 pandemic, there were concerns that ACE inhibitors (ACE-I) and angiotensin receptor blockers (ARB), commonly used to manage hypertension, might increase *ACE2* expression and thus increase susceptibility to COVID-19. Since then, several groups have assessed the relationship between ACE-I/ARB use and COVID-19 outcomes, with no clear consensus on risk versus benefit.<sup>14-16</sup> However, these studies were conducted in predominantly Caucasian populations, were focused on estimating risk of COVID-19, and did not account for ethnicity and the *ACE* D allele prevalence. Differences in the frequency of continuing or discontinuing ACE-I/ARB across hospitalized patients may

also have contributed to discrepancies between studies.<sup>17</sup> These results supported the joint statement issued by expert cardiology societies that, in the absence of experimental or clinical information demonstrating benefit or adverse outcomes, individuals using ACE-I/ARB medications should continue their medications during COVID-19 infection.<sup>18</sup>

We recently reported that there was an increased prevalence of the *ACE* D allele among African Americans compared to other races and ethnicities.<sup>13</sup> We therefore hypothesized that there may be a more pronounced benefit from ACE-I/ARB therapy in the AA population compared to prior published cohorts. This study assessed whether ACE-I/ARB use among hospitalized AA patients with COVID-19 was associated with clinical benefit and improved outcome.

## Methods

### *Data source and COVID-19 cohort*

This observational, retrospective cohort study utilized deidentified electronic medical record data (EMR data; EPIC systems, Verona, WI) from the Mount Sinai Health System (MSHS). We identified 6,218 patients who met the admission criteria due to COVID-19 admitted to hospital (including emergency room visits and inpatient admissions) related to COVID-19 at a Mount Sinai facility from February 24 through May 31, 2020. Encounters were considered COVID-19-related if a COVID-19 test was ordered or a COVID-19 diagnosis was assigned. COVID-19 was diagnosed by real-time reverse-transcriptase PCR-based clinical tests from nasopharyngeal swab specimens.

We extracted patient demographics from the EMR including age, sex, and self-identified race/ethnicity. Race and ethnicity were summarized into the mutually exclusive categories of African American (AA), Asian, Hispanic, White, Unknown, and Other. We retrieved disease comorbidities from the database including asthma, chronic obstructive pulmonary disease (COPD), obstructive sleep apnea, obesity, diabetes mellitus, chronic kidney disease, HIV infection, cancer, coronary artery disease, atrial fibrillation, heart failure, chronic viral hepatitis, and alcoholic nonalcoholic liver disease. Additionally, we extracted laboratory test orders and results from the encounters including white blood cell (WBC), creatinine, anion gap, potassium and alanine transaminase (ALT). We also retrieved the initial vital sign measurements for each encounter, including BMI, temperature, O<sub>2</sub> saturation, heart rate, respiratory rate, and blood pressure (BP).

### *ACE-I/ARB, other antihypertensive medications and outcomes*

We defined ACE-I/ARB exposure as an active prescription from January 1, 2019, up to and including hospitalization for COVID-19 (“anytime use”), with 18.3% in our SARS-CoV-2 positive

inpatient population; while 9.4% patients were prescribed ACE-I/ARB in our general population in our EMR system from January 1, 2019 to May 31, 2020. We identified 1,139 anytime use patients and divided them into two subsets: 1) documented ACE-I/ARB administration during their hospitalization (“in-hospital use”, N=605), and 2) ACE-I/ARB use prior to admission but not during hospitalization (“outpatient use”, N=534). We also traced other antihypertensive medications (calcium-channel blockers, beta blockers, and diuretics) dispensed from January 1, 2019 till May 31, 2020, that were included in the medication history or usage. We have listed all the antihypertensive medications in Table S1 in the supplement.

The primary outcome was COVID-19 caused in-hospital mortality in the entire population and in the AA sub-population. There were three possible outcomes for each hospital encounter: in-hospital mortality, discharge, or continued hospitalization (right censored). The secondary outcomes are intensive care unit (ICU) admission and acute kidney injury (AKI), which were evaluated in the AA population as sub-analysis.

We assessed the associations between ACE-I/ARB anytime use, in-hospital use, or outpatient use and COVID-19 in-hospital mortality for the entire population, AA population, or non-AA population compared with patients who were not on ACE-I/ARB. We defined the outpatient use if patients were prescribed ACE-I/ARB during their outpatient visits but without continued in-hospital use, and the in-hospital use if patients continued or were administered ACE-I/ARB. These analyses were also repeated for ACE-I use and ARB use; exposure to either class of medication was determined without regard to exposure to the other class.

### *Statistical Analysis*

We described continuous variables as their medians and interquartile ranges (IQR), or means and standard deviations (SD). We described categorical variables as a number and percentage (%). We measured statistical differences with Kruskal-Wallis or two sample t-test for continuous variables and Chi-square test for categorical variables, respectively.

We evaluated the ACE-I/ARB associations with in-hospital mortality using multivariate logistic regression adjusting for the following confounders: age, hospital stay duration, race, smoking status, BMI, temperature, O<sub>2</sub> saturation, heart rate, respiratory rate, hypertension, asthma, chronic obstructive pulmonary disease (COPD), obstructive sleep apnea, obesity, diabetes, chronic kidney disease, HIV, cancer, coronary artery disease, atrial fibrillation, heart failure, chronic viral hepatitis, liver disease, ICU stay, white blood cell (WBC), creatinine, anion gap, potassium and alanine transaminase (ALT). We reported the adjusted odds ratios and corresponding 95% confidence intervals. Statistical significance was defined as a two-sided  $P < 0.05$ , unless otherwise stated. We also applied the Wald-based power and sample size formulas for logistic regression to calculate the power given the observed sample size.<sup>19</sup> We used two-tailed test to

estimate the probability of event under the null hypothesis which was the in-hospital mortality rate and we used the binomial distribution for the ACE-I/ARB with the prescription rate as the probability. We further analyzed the interaction between ACE-I/ARB with AA race by adding the interaction term in the logistic regression with adjustment by same potential confounders.

We employed inverse propensity-weighted logistic regression as a doubly robust method to balance the potential confounders and further estimate the effect of ACE-I/ARB use on COVID-19 patient outcomes. Specifically, we used the generalized boosted regression to compute propensity scores and balance the covariates based on the average treatment effect on the treated (ATT), and then calculated the adjusted odds ratios and 95% confidence interval using multivariate logistic regression with the balanced covariates. In all the analyses, cases with missing covariates were omitted. We performed all analysis using R (version 4.0.1) and Python (version 3.7). This study is approved by IRB-17-01245.

## Results

### *Participants*

Our cohort included 6,218 patients diagnosed with COVID-19 and admitted to one of five hospitals using EPIC system in the Mount Sinai Health System (MSHS) from February 24 through May 31, 2020. Among these patients, 1,139 (18.3%) were ACE-I/ARB users and 5,079 (81.7%) were ACE-I/ARB non-users since 2019. The data extraction process and study workflow are shown in Figure 1. ACE-I/ARB users were older than non-users (median age, 68 [IQR, 60-78] vs 60 [IQR, 43-72]) (Table 1). Compared with non-users, ACE-I/ARB users were more likely to have cardiovascular comorbidities and risk factors such as hypertension (60.6% vs 18.3%;  $P<0.001$ ), diabetes mellitus (40.1% vs 11.3%;  $P<0.001$ ), coronary artery disease (24.0% vs 5.7%;  $P<0.001$ ), and heart failure (16.3% vs 3.0%;  $P<0.001$ ). ACE-I/ARBs users were also more likely to use other antihypertensive medications such as calcium channel blockers (53.8% vs 18.4%;  $P<0.001$ ), beta blockers (47.7% vs 18.2%;  $P<0.001$ ), and diuretics (56.4% vs 18.9%;  $P<0.001$ ). As of May 31, 2020, of the 6,218 patients in our COVID-19 cohort, 1,326 (21.3%) died, 4,384 (70.5%) were discharged, and 508 (8.2%) were still hospitalized as of 31 May 2020.

African American (AA) patients comprised 26.2% of our COVID-19 cohort (1,621 patients). Similar to the entire population, AA ACE-I/ARB users were older than ACE-I/ARB non-users (median age, 66 [IQR 58-75] vs 59 [IQR 43-70]) and more likely to have disease comorbidities (Table 1). In the AA population, 300 patients (18.4%) died, 1,187 patients (72.8%) were discharged, and 114 patients (8.8%) were still hospitalized as of May 31, 2020. A comparison of the characteristics of the AA and non-AA populations is presented in Table S2

### *ACE-I/ARB associations with in-hospital mortality overall and by race*

Unadjusted mortality was higher in ACE-I/ARB users compared to non-users in both the entire population (25.2% vs. 20.5%,  $P < 0.001$ ) and AA population (19.4% vs. 18.1%,  $P = 0.296$ ) (Table 1), especially for hypertension, obesity, and diabetes, which are known risk factors to COVID mortality.<sup>20</sup> We therefore adjusted for these confounding factors in this population substantially enriched with chronic conditions and observed that ACE-I/ARB use was independently associated with reduced risk of in-hospital mortality in the entire population (OR, 0.655; 95% CI, 0.505-0.850;  $P = 0.001$ ) by the multivariable logistic regression model (Table 2). Although the interaction term of ACE-I/ARB use and AA population is not significant (OR, 0.736; 95% CI, 0.428-1.266;  $P = 0.268$ ), the odds of in-hospital death in AA population who received ACE-I/ARB is smaller compared to non-AA population who also received ACE-I/ARB (OR, 0.659) (Table S2). When stratified by sub-population, there was a significant reduction in in-hospital mortality in the AA population (OR, 0.44; 95% CI, 0.249-0.779;  $P = 0.005$ ), and did not reach significance in the non-AA population (OR, 0.748; 95% CI, 0.553-1.012;  $P = 0.06$ ) with the power  $1 - \beta = 0.8$  in the Wald-based power analysis. The prescription ratio of ACE-I/ARB was similar between the AA and non-AA population (Table S3). We confirmed this result using inverse propensity-weighted logistic regression after balancing for confounders: ACE-I/ARB use was significantly associated with decreased risk of in-hospital mortality in the entire population (OR, 0.673; 95% CI, 0.511-0.886;  $P = 0.005$ ), the AA population (OR, 0.381; 95% CI, 0.204-0.712;  $P = 0.003$ ), but not the non-AA population (OR, 0.765; 95% CI, 0.556-1.052;  $P = 0.1$ )

#### *ACE-I/ARB use among African Americans did not impact secondary outcomes*

In the AA population, since we identified the significant association between ACE-I/ARB use and in-hospital mortality, we further estimated the effects of ACE-I/ARB use on two secondary outcomes: intensive care unit (ICU) admission and acute kidney injury (AKI) development. Unadjusted rates of these outcomes were higher among AA ACE-I/ARB users than AA non-users (Death: 19.4% vs. 18.1%,  $P = 0.296$ ; ICU: 17.5% vs. 12.7%,  $P = 0.03$ ; AKI: 9.9% vs. 5.8%,  $P = 0.01$ ) (Table 1). Neither ICU admission (OR, 0.709; 95% CI, 0.419-1.198;  $P = 0.198$ ) nor AKI (OR, 1.306; 95% CI, 0.721-2.364;  $P = 0.379$ ) were significantly associated with ACE-I/ARB use in the AA population (Table S4). We confirmed these findings using inverse propensity-weighted logistic regression as well, where again, ACE-I/ARB use was not significantly associated with ICU admission (OR, 0.733; 95% CI, 0.425-1.264;  $P = 0.264$ ) or AKI (OR, 1.257; 95% CI, 0.642-2.463;  $P = 0.505$ ).

#### *In-hospital ARB use reduced risk of COVID-19 caused in-hospital mortality*

Given the significant impact ACE-I/ARB exposure had on in-hospital mortality of AA patients admitted for COVID-19, we sought to distinguish between in-hospital use of these classes of drugs and out-patient use, and between the two classes of drugs. ACE-I/ARB in-hospital use was significantly associated

with reduced mortality in the entire population (OR, 0.575; 95% CI, 0.419-0.791; P=0.001), the AA population (OR, 0.378; 95% CI, 0.188-0.766; P=0.006), and the non-AA population (OR, 0.652; 95% CI, 0.449-0.946; P=0.024) (Table 3). Outpatient ACE-I/ARB use alone was not significantly associated with mortality in the entire population (OR, 1.016; 95% CI, 0.69-1.496; P=0.936), the AA population (OR, 0.889; 95% CI, 0.375-2.158; P=0.812), nor the non-AA population (OR, 1.101; 95% CI, 0.7-1.73; P=0.677).

We additionally evaluated ACE-I use and ARB use separately and across different exposure periods (anytime use, in-hospital use and outpatient use). ARB in-hospital use was significantly associated with mortality in the entire population (OR, 0.560; 95% CI, 0.371-0.846; P=0.006), the AA population (OR, 0.196; 95% CI, 0.074-0.516; P=0.001), but not the non-AA population (OR, 0.687; 95% CI, 0.427-1.106; P=0.122) which might be due to limited statistical power ( $1-\beta = 0.55$  in the Wald-based power analysis) (Figure 2); while ACE-I use was not significantly associated with mortality in any cohort nor any drug exposure period (Figure S1). Again, the interaction term of ARB use and AA population is not significant (OR, 0.488; 95%CI, 0/185-1.292); P=0.149), but the direction of the effect suggests AA population who received ARB might have smaller odds (OR, 0.421) of in-hospital death compared to non-AA population (Table S2). Outpatient use was not significantly associated with in-hospital mortality for either medication class. We confirmed all the results with inverse propensity-weighted logistic regression (Table S5).

## Discussion

In this retrospective study of a racially and ethnically diverse cohort from New York City comprising 6,218 hospitalized COVID-19 patients seen between February 24 and March 31, 2020, we found that ACE-I/ARB use was significantly associated with reduced in-hospital mortality, particularly among African American (AA) patients. ACE-I/ARB users were older and had more comorbidities than non-users, but after controlling for these adverse risk factors, in-hospital ACE-I/ARB use (as opposed to outpatient-only use) was independently associated with improved outcomes. When analyzing ACE-I and ARB exposures separately, in-hospital ARB use was significantly associated with improved outcomes among AA patients but not non-AA patients. Conversely, ACE-I exposure was not independently associated with outcomes in any cohort.

Early in the COVID-19 pandemic, the finding that SARS-CoV-2 enters cells by binding to the *ACE2* protein led to concern that ACE-Is and ARBs might impact SARS-CoV-2 infectivity or virulence.<sup>21</sup> Many clinical studies from the USA, Europe, and China were subsequently reported, examining the association between ACE-I/ARB use and COVID-19 outcomes.<sup>22-24</sup> These studies found that ACE-I/ARB usage was associated with neither harm nor benefit in the setting of COVID-19 in Caucasian population,



however, one meta-analysis grouped studies by geography and found a lower mortality risk associated with ACE-I/ARB use among studies from China (OR = 0.65; 95% CI, 0.46–0.91; P = 0.013),<sup>22</sup> which might be suggested by a higher ACE I/D allele frequency in Asian population.<sup>13,25–27</sup> Whereas there was no significant association among studies from the US or Europe, suggesting the need to account for race and ethnicity. To our knowledge, this is the first study to report a potential benefit from the use of ACE-I/ARB in AA population hospitalized with COVID-19 using the one of the largest EMR systems in NYC.

Race and ethnicity may be relevant in this context as a proxy for genetic ancestry and the probability of carrying the *ACE* D-allele—the deletion allele of the *ACE* insertion/deletion polymorphism—which is associated with increased ACE1 activity and may contribute to ACE1/ACE2 imbalance in SARS-CoV-2 infection. Epidemiological studies in European, North African, and Asian settings have found significant positive correlations between D-allele prevalence and COVID-19 infection and mortality rates at the population level.<sup>8–11,27</sup> While it is not practical at present to determine the *ACE* genotype of large cohorts of COVID-19 patients, the prevalence of the D-allele is known to vary geographically and is highest in Africa and the Middle East.<sup>28</sup> Therefore, race may serve as a proxy for probability of D-allele carrier status. Indeed, we recently reported that African Americans have a higher prevalence of the D-allele than white Americans.<sup>13</sup>

With this premise in mind, we investigated the interaction between AA race and ACE-I/ARB use in relation to inpatient COVID-19 outcomes. Individuals carrying the D-allele would be expected to have excessive ACE1 and angiotensin-II in the context of COVID-19 infection and may thus derive benefit from either ACE1 inhibition by ACE-Is, or angiotensin-II blockade via ARB.<sup>13</sup> Using a multi-ethnic cohort of 6,218 hospitalized COVID-19 patients, we found a significant association between ACE-I/ARB use and reduced in-hospital mortality overall; this association appeared to be driven by a strong protective association between ACE-I/ARB use and in-hospital mortality in the AA (but not the non-AA) population though the interaction between ACE-I/ARB use and race was not significant. While our ability to detect a significant interaction may have been limited by sample size, these findings are consistent with the hypothesis that RAS hyperactivity in an *ACE* D-allele-enriched (e.g., African American) COVID-19 positive cohort may benefit from ACE-I/ARB use.<sup>13</sup>

We further analyzed ACE-I or ARB use separately and according to either outpatient or in-hospital exposure. Neither in-hospital nor outpatient ACE-I use was associated with mortality. Conversely, in-hospital ARB use was significantly associated with reduced mortality among AAs but not non-AAs. This may suggest that ACE1 inhibition alone is inadequate in the context of ACE2 occupation/down-regulation by SARS-CoV-2 virions; excess angiotensin-II may still accumulate in the absence of sufficient ACE2 activity. Inhibiting downstream angiotensin-II type 1 receptors (AT1R) using ARB may therefore be more effective. Mechanistic and clinical studies to dissect the relationships between COVID-19, ACE1/ACE2

activity, angiotensin-II levels, and ARB are warranted. Attention should be paid to underlying *ACE* genotype in studies of RAS inhibitors in COVID-19 moving forward. The ongoing randomized clinical trial of ramipril against placebo to treat COVID-19 patients (NCT04366050) may provide insightful data on the therapeutic value of ACE inhibitors.<sup>29</sup>

Prior clinical studies in US population have examined associations between ACE-I/ARB use and COVID-19 outcomes without stratification by race.<sup>16,30–32</sup> Most of these studies have found no association between ACE-I/ARB use and outcomes such as hospitalization, ICU admission, or in-hospital mortality. However, these cohorts had a substantially higher proportion of Caucasian (45-70%) patients than ours (23.3%). One exception was the study by Lam et al., which found lower rates of ICU admission and mortality among patients who continued rather than discontinued ACE-I/ARB treatment upon admission for COVID-19.<sup>30</sup> The Lam et al. cohort was predominantly Caucasian (61.2%) but there was a large fraction of patients of “Other ethnicity” (26.2%), which could have influenced the overall D-allele prevalence in the cohort. Taken together, these results suggest that race and ethnicity—while imperfect as surrogates of D-allele prevalence—should be accounted for when assessing ACE-I/ARB associations with COVID-19.

### *Limitations*

Our study has several limitations. It was a retrospective study and cannot establish a causal relationship between ACE-I/ARB and COVID-19 outcomes via the *ACE* D-allele without individual-level germline genetic data and prospective treatment assignment. Secondly, our study is based on a single center experience and these analyses should be repeated in other cohorts. Finally, while outpatient medication adherence could not be verified, this EMR dataset draws on multiple data sources to bolster accuracy and comprehensiveness.

### **Conclusions**

In conclusion, our results agree with current recommendations to continue ACE-I/ARB in hospitalized COVID-19 patients provided there are no other contraindications. Our results also suggest a potential benefit for ACE-I/ARB among African American patients with COVID-19. We hypothesize that this is due to a higher *ACE* D-allele prevalence in the African American population. Further investigations in COVID-19 cohorts with linked clinical and genomic data are warranted.

**Acknowledgement:** The authors would like to acknowledge Sema4 IT for computational support hosted on AWS. **Author contributions:** Designed the study: LL and EES; Performed data acquisition and quality control: SL, ZW, ES; Performed statistical analysis: SL; Contributed clinical interpretation: TJ, RS, MAK, EG, NRN, RC, EES, LL; Drafted the paper: SL, RS, TJ, LL; Revised and approved the paper: MAK, EG, NRN, RC, EES. **Conflict of interest:** The authors declare that they have no competing interest. **Data and materials availability:** The Mount Sinai Health System database is not publicly available. We utilized Python and R, and their open-source libraries to conduct our analysis tailored to MSH data. The code is available upon request.

## References

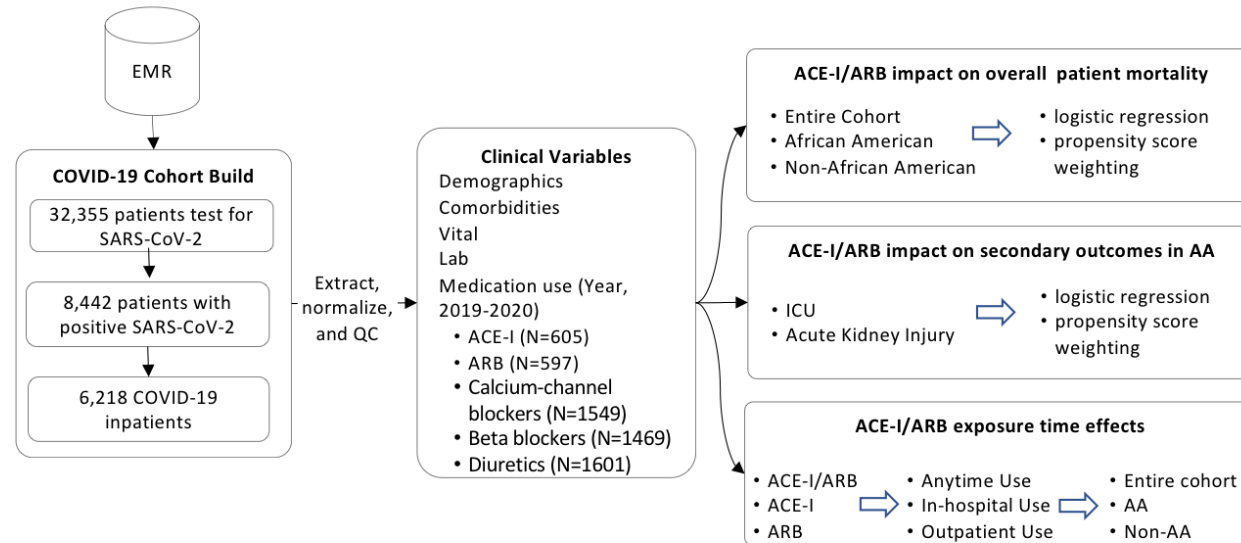
1. Andrasfay T, Goldman N. Reductions in 2020 US life expectancy due to COVID-19 and the disproportionate impact on the Black and Latino populations. *Proc Natl Acad Sci U S A*. Published online 2021. doi:10.1073/pnas.2014746118
2. National Center for Health Statistics. Provisional Death Counts for Coronavirus Disease (COVID-19). U.S. Department of Health and Human Services.
3. Rogers TN, Rogers CR, VanSant-Webb E, Gu LY, Yan B, Qeadan F. Racial Disparities in COVID-19 Mortality Among Essential Workers in the United States. *World Med Heal Policy*. Published online 2020. doi:10.1002/wmh3.358
4. Zeberg H, Pääbo S. The major genetic risk factor for severe COVID-19 is inherited from Neanderthals. *Nature*. Published online 2020. doi:10.1038/s41586-020-2818-3
5. The COVID-19 Host Genetics Initiative, a global initiative to elucidate the role of host genetic factors in susceptibility and severity of the SARS-CoV-2 virus pandemic. *Eur J Hum Genet*. Published online 2020. doi:10.1038/s41431-020-0636-6
6. Pairo-Castineira E, Clohisey S, Klaric L, et al. Genetic mechanisms of critical illness in Covid-19. *Nature*. Published online 2020. doi:10.1038/s41586-020-03065-y
7. Gemmati D, Tisato V. Genetic hypothesis and pharmacogenetics side of renin-angiotensin-system in COVID-19. *Genes (Basel)*. Published online 2020. doi:10.3390/genes11091044
8. Delanghe JR, Speeckaert MM, De Buyzere ML. ACE polymorphism and COVID-19 outcome. *Endocrine*. 2020;70(1):13-14. doi:10.1007/s12020-020-02454-7
9. Delanghe JR, Speeckaert MM, De Buyzere ML. The host's angiotensin-converting enzyme polymorphism may explain epidemiological findings in COVID-19 infections. *Clin Chim Acta*. 2020;505:192-193. doi:10.1016/j.cca.2020.03.031
10. Bellone M, Calvisi SL. ACE polymorphisms and COVID-19-related mortality in Europe. *J Mol Med*. 2020;98(11):1505-1509. doi:10.1007/s00109-020-01981-0
11. Pati A, Mahto H, Padhi S, Panda AK. ACE deletion allele is associated with susceptibility to SARS-CoV-2 infection and mortality rate: An epidemiological study in the Asian population. *Clin Chim Acta*. 2020;510:455-458. doi:10.1016/j.cca.2020.08.008
12. Rigat B, Hubert C, Alhenc-Gelas F, Cambien F, Corvol P, Soubrier F. An insertion/deletion polymorphism in the angiotensin I-converting enzyme gene accounting for half the variance of serum enzyme levels. *J Clin Invest*. 1990;86(4):1343-1346. doi:10.1172/JCI114844
13. Sarangarajan R, Winn R, Kiebish MA, Bountra C, Granger E, Narain NR. Ethnic Prevalence of Angiotensin-Converting Enzyme Deletion (D) Polymorphism and COVID-19 Risk: Rationale for Use of Angiotensin-Converting Enzyme Inhibitors/Angiotensin Receptor Blockers. *J Racial Ethn*

- Heal Disparities*. Published online 2020. doi:10.1007/s40615-020-00853-0
14. Lopes RD, Macedo AVS, De Barros E Silva PGM, et al. Effect of Discontinuing vs Continuing Angiotensin-Converting Enzyme Inhibitors and Angiotensin II Receptor Blockers on Days Alive and out of the Hospital in Patients Admitted with COVID-19: A Randomized Clinical Trial. *JAMA - J Am Med Assoc*. 2021;325(3):254-264. doi:10.1001/jama.2020.25864
  15. Mancia G, Rea F, Ludergnani M, Apolone G, Corrao G. Renin–Angiotensin–Aldosterone System Blockers and the Risk of Covid-19. *N Engl J Med*. 2020;382(25):2431-2440. doi:10.1056/NEJMoa2006923
  16. Reynolds HR, Adhikari S, Pulgarin C, et al. Renin–Angiotensin–Aldosterone System Inhibitors and Risk of Covid-19. *N Engl J Med*. 2020;382(25):2441-2448. doi:10.1056/NEJMoa2008975
  17. RAAS Inhibitors and Risk of Covid-19. *N Engl J Med*. 2020;383(20):1990-1994. doi:10.1056/NEJMc2030446
  18. Bozkurt B, Kovacs R, Harrington B. Joint HFSA/ACC/AHA Statement Addresses Concerns Re: Using RAAS Antagonists in COVID-19. *J Card Fail*. 2020;26(5):370. doi:10.1016/j.cardfail.2020.04.013
  19. Demidenko E. Sample size determination for logistic regression revisited. *Stat Med*. 2007;26(18):3385-3397. doi:10.1002/sim.2771
  20. Shah H, Khan MSH, Dhurandhar N V., Hegde V. The triumvirate: why hypertension, obesity, and diabetes are risk factors for adverse effects in patients with COVID-19. *Acta Diabetol*. 2021;1:3. doi:10.1007/s00592-020-01636-z
  21. Vaduganathan M, Vardeny O, Michel T, McMurray JJV, Pfeffer MA, Solomon SD. Renin–Angiotensin–Aldosterone System Inhibitors in Patients with Covid-19. *N Engl J Med*. 2020;382(17):1653-1659. doi:10.1056/nejmsr2005760
  22. Zhang X, Yu J, Pan L-Y, Jiang H-Y. ACEI/ARB use and risk of infection or severity or mortality of COVID-19: A systematic review and meta-analysis. Published online 2020. doi:10.1016/j.phrs.2020.104927
  23. Elena Flacco M, Acuti Martellucci C, Bravi F, et al. Treatment with ACE inhibitors or ARBs and risk of severe/lethal COVID-19: a meta-analysis Cardiac risk factors and prevention. *Heart*. 2020;0:1-6. doi:10.1136/heartjnl-2020-317336
  24. Lee MMY, Docherty KF, Sattar N, et al. Renin–angiotensin system blockers, risk of SARS-CoV-2 infection and outcomes from CoViD-19: systematic review and meta-analysis. *Eur Hear J - Cardiovasc Pharmacother*. Published online December 31, 2020. doi:10.1093/ehjcvp/pvaa138
  25. Rajeevan H, Soundararajan U, Kidd JR, Pakstis AJ, Kidd KK. ALFRED: An allele frequency resource for research and teaching. *Nucleic Acids Res*. 2012;40(D1). doi:10.1093/nar/gkr924

26. Harrap SB, Tzourio C, Cambien F, et al. The ACE gene I/D polymorphism is not associated with the blood pressure and cardiovascular benefits of ACE inhibition. *Hypertension*. 2003;42(3):297-303. doi:10.1161/01.HYP.0000088322.85804.96
27. Hatami N, Ahi S, Sadeghinikoo A, et al. Worldwide ACE (I/D) polymorphism may affect COVID-19 recovery rate: an ecological meta-regression. *Endocrine*. 2020;68(3):479-484. doi:10.1007/s12020-020-02381-7
28. Li X, Sun X, Jin L, Xue F. Worldwide spatial genetic structure of angiotensin-converting enzyme gene: A new evolutionary ecological evidence for the thrifty genotype hypothesis. *Eur J Hum Genet*. 2011;19(9):1002-1008. doi:10.1038/ejhg.2011.66
29. Ajmera V, Thompson WK, Smith DM, et al. RAMIC: Design of a randomized, double-blind, placebo-controlled trial to evaluate the efficacy of ramipril in patients with COVID-19. *Contemp Clin Trials*. Published online February 22, 2021:106330. doi:10.1016/j.cct.2021.106330
30. Lam KW, Chow KW, Vo J, et al. Continued in-hospital angiotensin-converting enzyme inhibitor and angiotensin II receptor blocker use in hypertensive COVID-19 patients is associated with positive clinical outcome. *J Infect Dis*. 2020;222(8):1256-1264. doi:10.1093/infdis/jiaa447
31. Mehta N, Kalra A, Nowacki AS, et al. Association of Use of Angiotensin-Converting Enzyme Inhibitors and Angiotensin II Receptor Blockers with Testing Positive for Coronavirus Disease 2019 (COVID-19). *JAMA Cardiol*. 2020;5(9):1020-1026. doi:10.1001/jamacardio.2020.1855
32. Khera R, Clark C, Lu Y, et al. Association of Angiotensin-Converting Enzyme Inhibitors and Angiotensin Receptor Blockers with the Risk of Hospitalization and Death in Hypertensive Patients with Coronavirus Disease-19. *J Am Heart Assoc*. Published online February 24, 2021. doi:10.1161/JAHA.120.018086

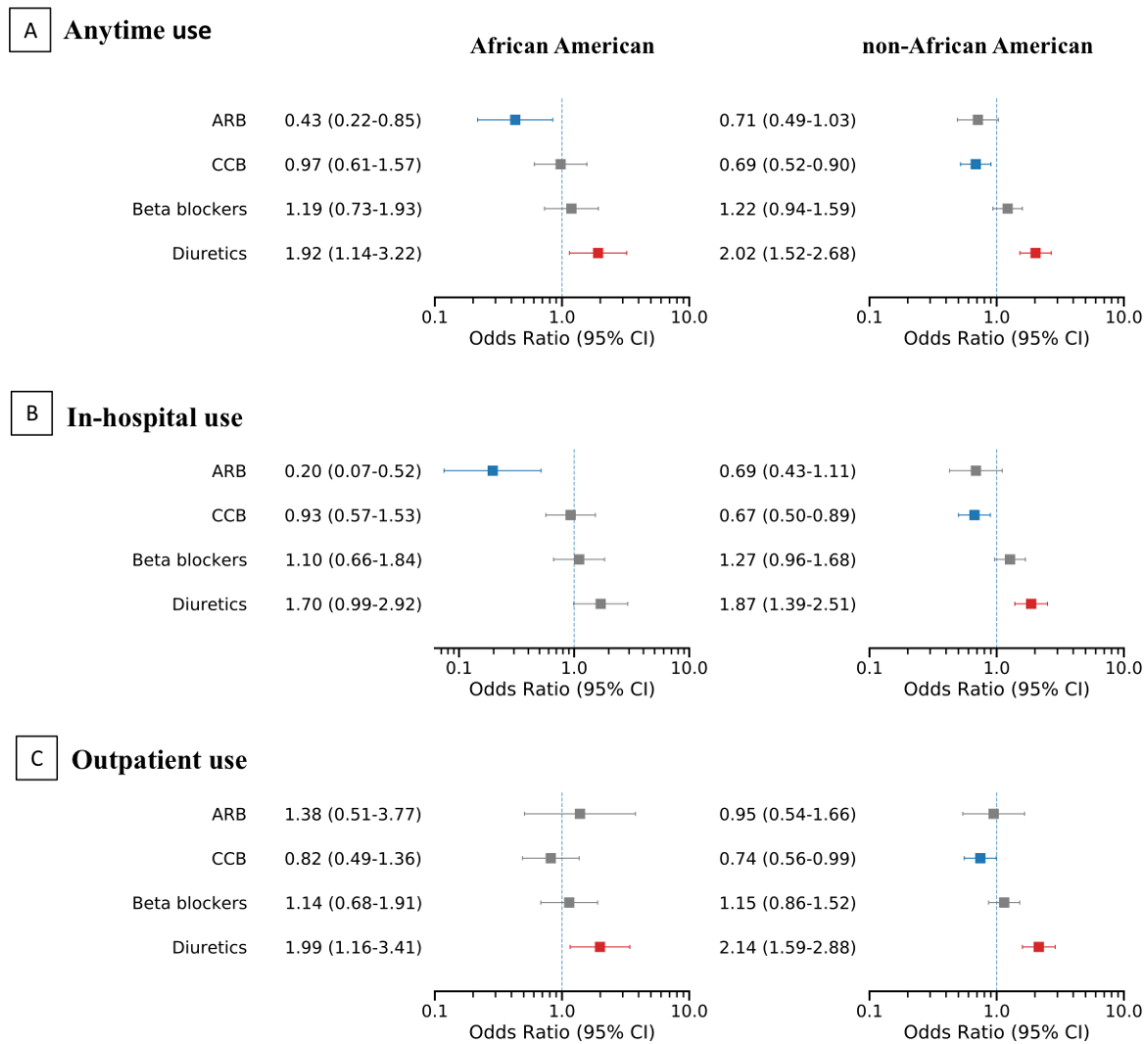
## FIGURES

**Figure 1. The working flowchart for analyzing ACE-I/ARB effects on COVID-19 in-hospital mortality, ICU admission, and AKI development for African American population**



Abbreviations: EMR: electronic medical records; QC, quality control; ACE-I, angiotensin-converting enzyme inhibitor; ARB, angiotensin receptor blocker; ICU, intensive care unit; AA, African American

**Figure 2. Different ARBs exposure times and other antihypertensive drugs, and their associations with COVID-19 in-hospital mortality**



Abbreviations: ARB, angiotensin receptor blocker; CCB, calcium channel blocker



## TABLES

**Table 1. Characteristics of COVID-19 patients in ACE-I/ARB and Non-ACE-I/ARB groups for entire population and African American patients**

	Entire Population			African American Patients		
	ACE-I/ARB	Non-ACE-I/ARB	P-value	ACE-I/ARB	Non-ACE-I/ARB	P-value
n	1139	5079		314	1317	
<b>Patient Characteristics</b>						
Age, median [Q1,Q3]	68 [60,78]	60 [43,72]	<0.001	66 [58,75]	59 [43,70]	<0.001
Sex, n (%)			<0.001			0.08
Female	462 (40.6)	2407 (47.4)		150 (47.8)	704 (53.5)	
Male	677 (59.4)	2672 (52.6)		164 (52.2)	613 (46.5)	
Race, n (%)			<0.001			
White	225 (19.8)	1223 (24.1)		NA	NA	
African American	314 (27.6)	1317 (25.9)		NA	NA	
Asian	64 (5.6)	234 (4.6)		NA	NA	
Hispanic	379 (33.3)	1434 (28.2)		NA	NA	
Other	139 (12.2)	708 (13.9)		NA	NA	
Unknown	18 (1.6)	163 (3.2)		NA	NA	
BMI (kg/m <sup>2</sup> ), mean (SD)	29.2 (7.3)	28.7 (7.7)	0.020	30.3 (8.0)	30.2 (8.9)	0.817
Smoking status, n (%)			<0.001			<0.001
Never	575 (50.5)	2798 (55.1)		147 (46.8)	712 (54.1)	
Quit	387 (34.0)	796 (15.7)		119 (37.9)	220 (16.7)	
Yes	64 (5.6)	202 (4.0)		23 (7.3)	80 (6.1)	
Not Asked	113 (9.9)	1283 (25.3)		25 (8.0)	305 (23.2)	
Temperature (F), mean (SD)	98.9 (1.5)	99.0 (1.8)	0.537	98.9 (1.7)	98.8 (1.5)	0.446
Max. temperature (F), mean (SD)	100.8 (1.8)	100.3 (2.0)	<0.001	100.7 (1.8)	100.1 (2.0)	<0.001
O2 saturation (%), median [Q1,Q3]	96.0 [93.0,98.0]	97.0 [94.0,99.0]	<0.001	96.5 [94.0,98.0]	97.0 [95.0,99.0]	<0.001
Min. O2 saturation (%), median [Q1,Q3]	90.0 [82.0,93.0]	92.0 [86.0,97.0]	<0.001	90.5 [84.8,94.0]	93.0 [88.0,98.0]	<0.001
Heart rate (BPM), mean (SD)	93.0 (19.8)	95.7 (19.8)	<0.001	94.8 (18.7)	96.1 (18.4)	0.247
Respiratory rate >25, n (%)	145 (12.7)	593 (11.7)	0.345	34 (10.8)	108 (8.2)	0.170
High BP (SBP>140 or DBP>90), n (%)	491 (43.1)	1588 (31.3)	<0.001	151 (48.1)	482 (36.6)	<0.001
<b>Antihypertensive Medications</b>						
Calcium-channel blockers, n (%)	613 (53.8)	936 (18.4)	<0.001	179 (57.0)	285 (21.6)	<0.001

Beta blockers, n (%)	543 (47.7)	926 (18.2)	<0.001	151 (48.1)	252 (19.1)	<0.001
Diuretics, n (%)	642 (56.4)	959 (18.9)	<0.001	176 (56.1)	246 (18.7)	<0.001
<b>Comorbidities</b>						
Asthma, n (%)	95 (8.3)	189 (3.7)	<0.001	29 (9.2)	61 (4.6)	0.002
COPD, n (%)	65 (5.7)	121 (2.4)	<0.001	29 (9.2)	36 (2.7)	<0.001
Hypertension, n (%)	690 (60.6)	928 (18.3)	<0.001	205 (65.3)	261 (19.8)	<0.001
Obstructive Sleep Apnea, n (%)	57 (5.0)	49 (1.0)	<0.001	20 (6.4)	17 (1.3)	<0.001
Obesity, n (%)	170 (14.9)	266 (5.2)	<0.001	62 (19.7)	83 (6.3)	<0.001
Diabetes, n (%)	457 (40.1)	575 (11.3)	<0.001	141 (44.9)	156 (11.8)	<0.001
Chronic Kidney Disease, n (%)	217 (19.1)	322 (6.3)	<0.001	78 (24.8)	110 (8.4)	<0.001
HIV, n (%)	23 (2.0)	61 (1.2)	0.043	13 (4.1)	22 (1.7)	0.013
Cancer, n (%)	135 (11.9)	299 (5.9)	<0.001	50 (15.9)	65 (4.9)	<0.001
Coronary Artery Disease, n (%)	273 (24.0)	291 (5.7)	<0.001	58 (18.5)	59 (4.5)	<0.001
Atrial Fibrillation, n (%)	134 (11.8)	168 (3.3)	<0.001	33 (10.5)	32 (2.4)	<0.001
Heart Failure, n (%)	186 (16.3)	153 (3.0)	<0.001	53 (16.9)	48 (3.6)	<0.001
Chronic Viral Hepatitis, n (%)	17 (1.5)	37 (0.7)	0.020	11 (3.5)	13 (1.0)	0.003
Liver Disease, n (%)	36 (3.2)	80 (1.6)	0.001	12 (3.8)	11 (0.8)	<0.001
Acute Kidney Injury, n (%)	99 (8.7)	241 (4.7)	<0.001	31 (9.9)	77 (5.8)	0.014
<b>Labs</b>						
WBC (K/uL), median [Q1,Q3]	7.2 [5.4,10.4]	7.6 [5.6,10.7]	0.012	6.6 [5.0,9.4]	7.5 [5.4,10.2]	0.002
CREATININE > 1.2, n (%)	514 (45.1)	1347 (26.5)	<0.001	171 (54.5)	432 (32.8)	<0.001
ANION GAP (mEq/L), mean (SD)	13.1 (4.2)	12.9 (4.3)	0.166	13.5 (5.3)	13.4 (4.8)	0.832
POTASSIUM (mmol/L), mean (SD)	4.4 (0.8)	4.4 (0.8)	0.004	4.5 (0.9)	4.4 (0.9)	0.115
ALT (U/L), median [Q1,Q3]	27.0 [17.0,45.5]	30.0 [19.0,52.0]	<0.001	22.0 [15.0,38.0]	27.0 [17.0,46.0]	0.001
<b>Hospital Conditions</b>						
ICU, n (%)	236 (20.7)	749 (14.7)	<0.001	55 (17.5)	167 (12.7)	0.031
Days after infection, median [Q1,Q3]	5.7 [2.5,9.7]	3.6 [0.6,8.0]	<0.001	5.7 [2.6,9.7]	3.5 [0.6,7.9]	<0.001
Hospital status, n (%)			<0.001			<0.001
Still Hospitalized	131 (11.5)	377 (7.4)		45 (14.3)	99 (7.5)	
Deceased	287 (25.2)	1039 (20.5)		61 (19.4)	239 (18.1)	
Discharged	721 (63.3)	3663 (72.1)		208 (66.2)	979 (74.3)	

Abbreviations: BMI, body mass index; BPM, beats per minute; BP, blood pressure; SBP, systolic blood pressure; DBP, diastolic blood pressure; ACE-I, angiotensin-converting enzyme; ARBs, angiotensin II receptor blockers; COPD, chronic obstructive pulmonary disease; HIV, human immunodeficient virus; WBC, white blood cell count; ALT, alanine aminotransferase

**Table 2. Adjusted odds ratios for COVID-19 in-hospital mortality in different race groups associated with ACE-I/ARB and other covariates**

	All Races (N=5,710)		African American (N=1,487)		Non-African American (N=4,223)	
	Adjusted OR (95% CI)	p-value	Adjusted OR (95% CI)	p-value	Adjusted OR (95% CI)	p-value
<b>Antihypertensive Medications</b>						
ACE-I/ARB	0.655 (0.505-0.850)	0.001	0.440 (0.249-0.779)	0.005	0.748 (0.553-1.012)	0.060
Calcium-channel blockers	0.784 (0.620-0.992)	0.043	1.029 (0.638-1.662)	0.905	0.695 (0.527-0.916)	0.010
Beta blockers	1.212 (0.964-1.522)	0.100	1.219 (0.748-1.986)	0.427	1.226 (0.940-1.600)	0.133
Diuretics	2.077 (1.621-2.664)	<0.001	2.063 (1.218-3.494)	0.007	2.054 (1.543-2.735)	<0.001
<b>Patient Characteristics</b>						
Age	1.082 (1.071-1.093)	<0.001	1.092 (1.069-1.116)	<0.001	1.083 (1.070-1.095)	<0.001
Male	1.071 (0.855-1.342)	0.550	1.234 (0.759-2.006)	0.397	1.051 (0.809-1.366)	0.708
Race: African American	0.685 (0.507-0.925)	0.013	N/A	N/A	N/A	N/A
Race: Asian	0.720 (0.415-1.247)	0.241	N/A	N/A	N/A	N/A
Race: Hispanic	0.793 (0.593-1.061)	0.118	N/A	N/A	N/A	N/A
Race: Other	0.708 (0.497-1.008)	0.056	N/A	N/A	N/A	N/A
Race: Unknown	0.677 (0.349-1.315)	0.249	N/A	N/A	N/A	N/A
Smoking Status: Not Asked	1.161 (0.864-1.557)	0.322	1.259 (0.674-2.351)	0.470	1.037 (0.736-1.459)	0.836
Smoking Status: Quit	1.122 (0.861-1.462)	0.397	1.059 (0.597-1.876)	0.846	1.119 (0.822-1.520)	0.476
Smoking Status: Yes	1.531 (0.902-2.599)	0.114	3.504 (1.398-8.785)	0.007	0.798 (0.393-1.618)	0.532
BMI	1.008 (0.993-1.023)	0.301	1.015 (0.986-1.045)	0.306	1.006 (0.987-1.024)	0.544
Temperature	0.974 (0.923-1.028)	0.342	0.924 (0.791-1.080)	0.321	0.984 (0.928-1.044)	0.597
Max. Temperature	1.218 (1.139-1.302)	<0.001	1.186 (1.025-1.373)	0.021	1.237 (1.146-1.338)	<0.001
O2 Saturation	0.999 (0.982-1.017)	0.919	0.985 (0.947-1.025)	0.472	1.007 (0.987-1.027)	0.506
Min. O2 Saturation	0.936 (0.927-0.945)	<0.001	0.948 (0.933-0.964)	<0.001	0.930 (0.919-0.941)	<0.001
Heart Rate	1.004 (0.998-1.010)	0.167	1.000 (0.988-1.013)	0.943	1.004 (0.998-1.011)	0.213
Respiratory Rate > 25	1.411 (1.053-1.887)	0.021	1.579 (0.788-3.165)	0.197	1.395 (1.003-1.941)	0.048
High BP (SBP>140 or DBP>90)	0.881 (0.705-1.100)	0.263	0.842 (0.528-1.344)	0.472	0.887 (0.683-1.153)	0.369
<b>Comorbidities</b>						
Asthma	0.501 (0.296-0.850)	0.010	0.374 (0.121-1.161)	0.089	0.523 (0.280-0.976)	0.042
COPD	1.359 (0.824-2.241)	0.229	1.094 (0.415-2.889)	0.856	1.462 (0.793-2.697)	0.223
Hypertension	0.901 (0.688-1.179)	0.447	0.671 (0.366-1.231)	0.197	0.999 (0.734-1.361)	0.997
Obstructive Sleep Apnea	1.611 (0.779-3.333)	0.199	0.795 (0.187-3.370)	0.755	1.980 (0.841-4.660)	0.118
Obesity	1.124 (0.733-1.723)	0.592	2.477 (1.083-5.663)	0.032	0.829 (0.490-1.404)	0.485
Diabetes	1.081 (0.814-1.436)	0.591	1.471 (0.803-2.694)	0.212	0.942 (0.677-1.311)	0.724

Chronic Kidney Disease	1.115 (0.780-1.594)	0.548	1.125 (0.571-2.214)	0.734	1.107 (0.718-1.707)	0.643
HIV	1.763 (0.749-4.150)	0.194	1.077 (0.172-6.753)	0.937	2.312 (0.831-6.437)	0.108
Cancer	1.342 (0.951-1.893)	0.094	2.323 (1.138-4.740)	0.021	1.095 (0.728-1.649)	0.661
Coronary Artery Disease	1.070 (0.767-1.492)	0.691	1.788 (0.840-3.804)	0.132	0.927 (0.633-1.357)	0.696
Atrial Fibrillation	0.927 (0.624-1.377)	0.708	1.430 (0.563-3.633)	0.452	0.869 (0.553-1.366)	0.544
Heart Failure	0.971 (0.643-1.467)	0.889	0.607 (0.243-1.517)	0.285	1.046 (0.648-1.687)	0.855
Liver Disease	1.489 (0.772-2.872)	0.235	1.766 (0.355-8.785)	0.487	1.636 (0.800-3.347)	0.178
Acute Kidney Injury	1.078 (0.723-1.606)	0.714	0.589 (0.268-1.292)	0.186	1.499 (0.919-2.450)	0.105
<b>Labs</b>						
WBC	1.018 (0.997-1.040)	0.094	1.015 (0.968-1.064)	0.540	1.019 (0.995-1.045)	0.122
Creatinine > 1.2	1.732 (1.342-2.234)	<0.001	1.744 (1.004-3.028)	0.049	1.699 (1.266-2.280)	<0.001
Anion Gap	1.079 (1.050-1.110)	<0.001	1.052 (1.003-1.104)	0.038	1.104 (1.065-1.146)	<0.001
Potassium	1.174 (1.028-1.339)	0.017	1.117 (0.877-1.425)	0.369	1.204 (1.022-1.418)	0.026
ALT	1.001 (1.000-1.002)	0.184	1.002 (0.999-1.006)	0.172	1.001 (0.999-1.002)	0.449
<b>Hospital Conditions</b>						
ICU	3.881 (2.930-5.140)	<0.001	8.109 (4.336-15.165)	<0.001	3.062 (2.217-4.229)	<0.001
Duration (days)	0.966 (0.950-0.982)	<0.001	0.972 (0.939-1.008)	0.126	0.963 (0.945-0.981)	<0.001

Abbreviations: ACE-I, angiotensin-converting enzyme; ARBs, angiotensin II receptor blockers; BMI, body mass index; BP, blood pressure; SBP, systolic blood pressure; DBP, diastolic blood pressure; COPD, chronic obstructive pulmonary disease; HIV, human immunodeficient virus; WBC, white blood cell count; ALT, alanine aminotransferase

**Table 3. ACE-I/ARB in-hospital use: adjusted odds ratios for COVID-19 in-hospital mortality in different race groups**

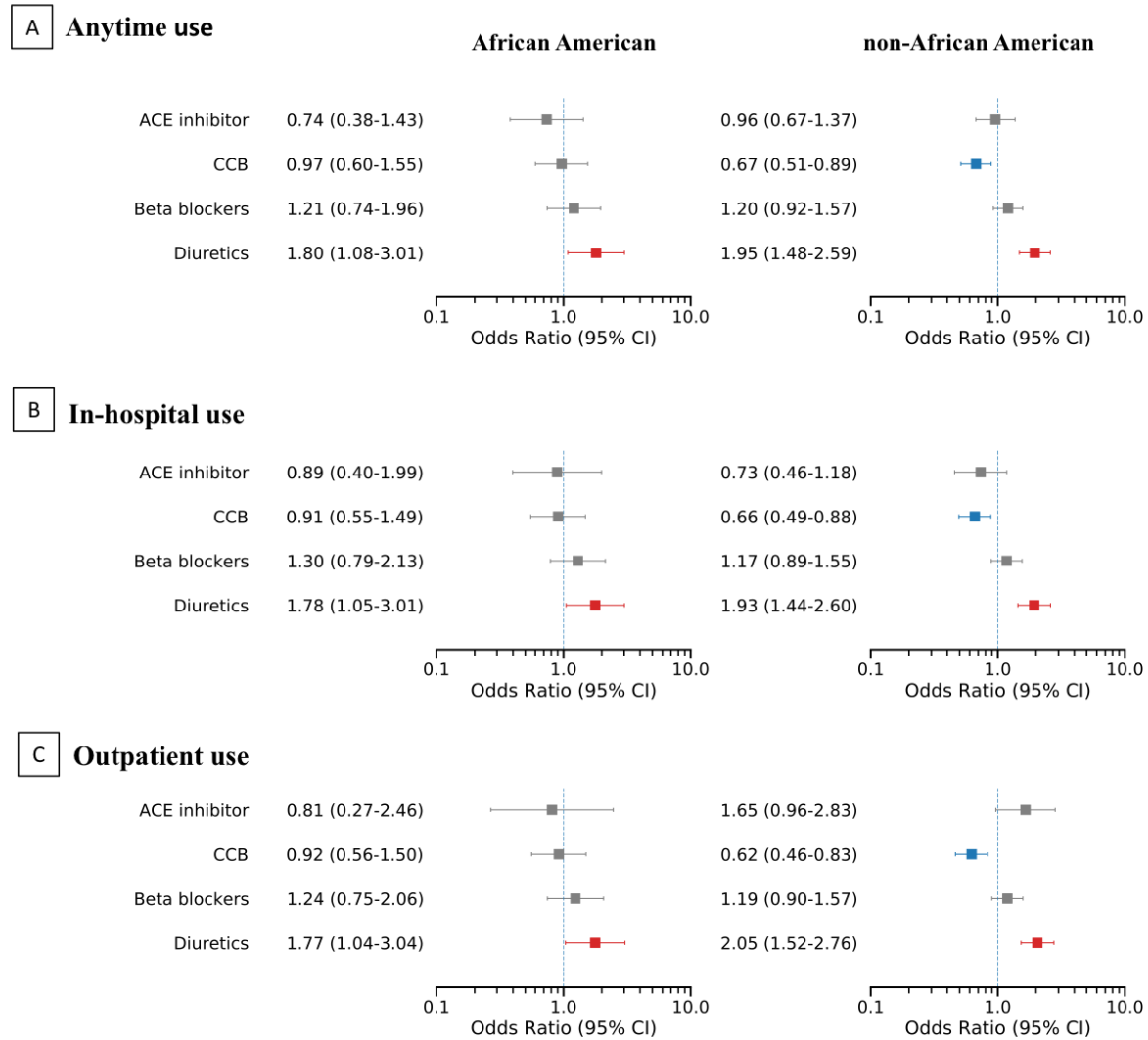
	All Races (N=5,240)		African American (N=1,356)		Non-African American (N=3,884)	
	Adjusted OR (95% CI)	p-value	Adjusted OR (95% CI)	p-value	Adjusted OR (95% CI)	p-value
<b>Antihypertensive Medications</b>						
ACE-I/ARB	0.575 (0.419-0.791)	0.001	0.378 (0.188-0.760)	0.006	0.652 (0.449-0.946)	0.024
Calcium-channel blockers	0.745 (0.577-0.964)	0.025	0.919 (0.549-1.540)	0.75	0.678 (0.501-0.919)	0.012
Beta blockers	1.218 (0.951-1.560)	0.118	1.229 (0.728-2.071)	0.44	1.265 (0.946-1.690)	0.113
Diuretics	1.908 (1.456-2.497)	<0.001	1.775 (1.007-3.130)	0.047	1.887 (1.379-2.581)	<0.001
<b>Patient Characteristics</b>						
Age	1.082 (1.071-1.094)	<0.001	1.094 (1.069-1.120)	<0.001	1.082 (1.069-1.096)	<0.001
Male	0.944 (0.740-1.203)	0.639	1.178 (0.698-1.990)	0.539	0.908 (0.684-1.206)	0.505
Race: African American	0.755 (0.548-1.040)	0.085	N/A	N/A	N/A	N/A
Race: Asian	0.835 (0.463-1.508)	0.551	N/A	N/A	N/A	N/A
Race: Hispanic	0.839 (0.614-1.148)	0.273	N/A	N/A	N/A	N/A
Race: Other	0.753 (0.516-1.097)	0.14	N/A	N/A	N/A	N/A
Race: Unknown	0.740 (0.375-1.459)	0.385	N/A	N/A	N/A	N/A
Smoking Status: Not Asked	1.203 (0.888-1.631)	0.233	1.420 (0.746-2.705)	0.286	1.067 (0.749-1.520)	0.718
Smoking Status: Quit	1.201 (0.898-1.608)	0.218	1.335 (0.715-2.494)	0.365	1.135 (0.808-1.595)	0.463
Smoking Status: Yes	1.624 (0.924-2.852)	0.092	3.963 (1.514-10.360)	0.005	0.757 (0.351-1.631)	0.476
BMI	1.008 (0.992-1.024)	0.329	1.015 (0.984-1.046)	0.352	1.009 (0.989-1.028)	0.394
Temperature	0.983 (0.929-1.040)	0.548	0.946 (0.803-1.117)	0.518	0.988 (0.929-1.051)	0.709
Max. Temperature	1.235 (1.150-1.326)	<0.001	1.206 (1.034-1.406)	0.017	1.255 (1.155-1.363)	<0.001
O2 Saturation	0.992 (0.973-1.011)	0.409	0.987 (0.946-1.028)	0.533	0.997 (0.975-1.019)	0.784
Min. O2 Saturation	0.937 (0.927-0.946)	<0.001	0.950 (0.934-0.966)	<0.001	0.931 (0.919-0.943)	<0.001
Heart Rate	1.003 (0.997-1.010)	0.284	0.998 (0.985-1.012)	0.818	1.004 (0.996-1.011)	0.325
Respiratory Rate > 25	1.339 (0.977-1.833)	0.069	1.336 (0.619-2.883)	0.461	1.339 (0.941-1.904)	0.105
High BP (SBP>140 or DBP>90)	0.873 (0.687-1.108)	0.265	0.787 (0.477-1.298)	0.348	0.868 (0.654-1.150)	0.325
<b>Comorbidities</b>						
Asthma	0.548 (0.304-0.989)	0.046	0.222 (0.051-0.965)	0.045	0.650 (0.330-1.281)	0.213
COPD	1.575 (0.893-2.779)	0.117	1.793 (0.586-5.490)	0.307	1.610 (0.804-3.222)	0.179
Hypertension	0.903 (0.672-1.213)	0.497	0.734 (0.386-1.398)	0.347	0.975 (0.692-1.373)	0.886
Obstructive Sleep Apnea	1.465 (0.590-3.644)	0.411	0.647 (0.122-3.428)	0.609	1.958 (0.654-5.859)	0.23
Obesity	0.863 (0.525-1.419)	0.563	2.411 (0.944-6.160)	0.066	0.553 (0.294-1.039)	0.066
Diabetes	1.043 (0.757-1.436)	0.799	1.188 (0.602-2.344)	0.619	0.949 (0.652-1.381)	0.785

Chronic Kidney Disease	1.006 (0.665-1.522)	0.978	0.975 (0.448-2.125)	0.95	1.033 (0.623-1.713)	0.9
HIV	2.460 (0.978-6.178)	0.056	1.354 (0.141-12.975)	0.793	2.729 (0.942-7.901)	0.064
Cancer	1.335 (0.914-1.952)	0.135	2.113 (0.962-4.637)	0.063	1.068 (0.681-1.675)	0.775
Coronary Artery Disease	1.323 (0.902-1.939)	0.151	1.891 (0.774-4.618)	0.162	1.203 (0.779-1.861)	0.404
Atrial Fibrillation	0.874 (0.553-1.381)	0.564	1.112 (0.369-3.353)	0.851	0.860 (0.512-1.445)	0.569
Heart Failure	0.892 (0.537-1.480)	0.659	0.638 (0.219-1.857)	0.409	0.928 (0.511-1.685)	0.806
Liver Disease	1.275 (0.610-2.667)	0.519	2.330 (0.406-13.370)	0.343	1.307 (0.579-2.954)	0.519
Acute Kidney Injury	1.067 (0.672-1.692)	0.783	0.473 (0.194-1.153)	0.099	1.619 (0.909-2.883)	0.102
<b>Labs</b>						
WBC	1.009 (0.985-1.033)	0.468	0.992 (0.942-1.045)	0.765	1.015 (0.988-1.044)	0.279
Creatinine > 1.2	1.659 (1.261-2.181)	<0.001	1.980 (1.099-3.564)	0.023	1.584 (1.155-2.173)	0.004
Anion Gap	1.087 (1.053-1.121)	<0.001	1.060 (1.003-1.121)	0.04	1.102 (1.058-1.147)	<0.001
Potassium	1.177 (1.018-1.361)	0.027	1.053 (0.813-1.363)	0.695	1.236 (1.033-1.480)	0.021
ALT	1.001 (0.999-1.002)	0.358	1.001 (0.998-1.005)	0.397	1.000 (0.999-1.002)	0.585
<b>Hospital Conditions</b>						
ICU	4.255 (3.149-5.749)	<0.001	9.393 (4.802-18.394)	<0.001	3.397 (2.404-4.807)	<0.001
Duration (days)	0.967 (0.950-0.984)	<0.001	0.972 (0.937-1.009)	0.141	0.964 (0.945-0.983)	<0.001

Abbreviations: ACE-I, angiotensin-converting enzyme; ARBs, angiotensin II receptor blockers; BMI, body mass index; BP, blood pressure; SBP, systolic blood pressure; DBP, diastolic blood pressure; COPD, chronic obstructive pulmonary disease; HIV, human immunodeficient virus; WBC, white blood cell count; ALT, alanine aminotransferase

## Supplementary Materials

**Figure S1. Different ACE-I exposure times and other antihypertensive drugs, and their associations with COVID-19 in-hospital mortality**



Abbreviations: ACE, angiotensin-converting enzyme; CCB, calcium channel blocker

**Table S1. ACE-I/ARB and potential confounding medication categories including detailed medication names**

<b>Medication Category</b>	<b>Medication Names</b>
ACE inhibitors	Benazepril hydrochloride, Captopril, Enalapril maleate, Fosinopril sodium, Lisinopril, Moexipril, Perindopril, Quinapril hydrochloride, Ramipril, Trandolapril
ARBs	Azilsartan, Candesartan, Eprosartan mesylate, Irbesartan, losartan potassium, Olmesartan, Telmisartan, Valsartan
Diuretics	Chlorthalidone, Chlorothiazide, Hydrochlorothiazide, Indapamide, Metolazone, Amiloride hydrochloride, Spironolactone, Triamterene, Eplerenone, Furosemide, Bumetanide, Torsemide, Ethacrynic acid
Beta Blockers	Acebutolol, Atenolol, Betaxolol, Bisoprolol fumarate, Carteolol hydrochloride, Metoprolol, Nadolol, Nebivolol, Penbutolol sulfate, Pindolol, Propranolol hydrochloride, Solotol hydrochloride, Timolol maleate
Calcium-channel Blockers	Amlodipine, Bepridil, Diltiazem hydrochloride, Felodipine, Isradipine, Nicardipine, Nifedipine, Nisoldipine, Verapamil hydrochloride



**Table S2. Interaction between ACE-I/ARB and African American population from multivariable logistic regression also adjusted by other confounders**

Interaction Terms	Anytime use		In-hospital use		Outpatient use	
	Adjusted OR (95% CI)	p-value	Adjusted OR (95% CI)	p-value	Adjusted OR (95% CI)	p-value
<b><i>ACE-I/ARB use</i></b>						
ACE-I/ARB	0.708 (0.528-0.949)	0.021	0.605 (0.420-0.871)	0.007	1.122 (0.726-1.732)	0.605
ACE-I/ARB * AA	0.736 (0.428-1.266)	0.268	0.825 (0.413-1.648)	0.585	0.695 (0.311-1.550)	0.373
AA	0.896 (0.672-1.193)	0.451	0.897 (0.673-1.198)	0.463	0.879 (0.660-1.172)	0.381
<b><i>ACE-I use</i></b>						
ACE-I	0.908 (0.640-1.287)	0.588	0.662 (0.414-1.058)	0.085	1.661 (0.983-2.807)	0.058
ACE-I * AA	0.817 (0.413-1.617)	0.562	1.375 (0.572-3.303)	0.476	0.490 (0.168-1.426)	0.191
AA	0.844 (0.648-1.101)	0.212	0.836 (0.640-1.092)	0.188	0.832 (0.638-1.085)	0.176
<b><i>ARB use</i></b>						
ARB	0.708 (0.493-1.016)	0.061	0.669 (0.419-1.068)	0.092	0.998 (0.581-1.712)	0.993
ARB * AA	0.797 (0.403-1.577)	0.516	0.488 (0.185-1.292)	0.149	1.299 (0.477-3.540)	0.609
AA	0.854 (0.654-1.114)	0.244	0.863 (0.661-1.126)	0.278	0.842 (0.645-1.099)	0.206

**Note:** among patients of anytime use, the odds ratio of in-hospital death in AA population who received ACE-I/ARB compared to non-AA population who also received ACE-I/ARB is calculated as  $0.736 \times 0.896 = 0.659$ ; among patients of in-hospital use, the odds ratio of in hospital-death in AA population who received ARB compared to non-AA population who also received ARB is calculated as  $0.488 \times 0.863 = 0.421$

**Table S3. Characteristics of COVID-19 patients in African American and non-African American population**

	<b>African American</b>	<b>Non-African American</b>	<b>P-Value</b>
<b>n</b>	1631	4584	
<b>Antihypertensive Medications</b>			
ACE-I/ARB, n (%)	314 (19.3)	825 (18.0)	0.277
ACE inhibitor, n (%)	161 (9.9)	444 (9.7)	0.866
ARB, n (%)	171 (10.5)	426 (9.3)	0.176
Calcium-channel blockers, n (%)	464 (28.4)	1085 (23.7)	<0.001
Beta blockers, n (%)	403 (24.7)	1066 (23.3)	0.249
Diuretics, n (%)	422 (25.9)	1179 (25.7)	0.929
<b>Patient Characteristics</b>			
Age, median [Q1,Q3]	61 [47,72]	62 [46,75]	0.012
Sex, n (%)			<0.001
Female	854 (52.4)	2015 (44.0)	
Male	777 (47.6)	2569 (56.0)	
BMI (kg/m <sup>2</sup> ), mean (SD)	30.2 (8.7)	28.3 (7.1)	<0.001
Smoking status, n (%)			<0.001
Never	859 (52.7)	2514 (54.8)	
Not Asked	330 (20.2)	1063 (23.2)	
Quit	339 (20.8)	844 (18.4)	
Yes	103 (6.3)	163 (3.6)	
Temperature (F), mean (SD)	98.9 (1.6)	99.0 (1.8)	0.02
Max. temperature (F), mean (SD)	100.2 (2.0)	100.5 (2.0)	<0.001
O <sub>2</sub> saturation (%), median [Q1,Q3]	97.0 [95.0,99.0]	96.0 [93.0,98.0]	<0.001
Min. O <sub>2</sub> saturation (%), median [Q1,Q3]	92.0 [87.0,97.0]	91.0 [84.0,96.0]	<0.001
Heart rate (BPM), mean (SD)	95.9 (18.4)	95.0 (20.2)	0.116
Respiratory rate >25, n (%)	142 (8.7)	596 (13.0)	<0.001
High BP (SBP>140 or DBP>90), n (%)	633 (38.8)	1446 (31.5)	<0.001
<b>Comorbidities</b>			
Asthma, n (%)	90 (5.5)	194 (4.2)	0.039
COPD, n (%)	65 (4.0)	121 (2.6)	0.008
Hypertension, n (%)	466 (28.6)	1152 (25.1)	0.007
Obstructive Sleep Apnea, n (%)	37 (2.3)	69 (1.5)	0.053
Obesity, n (%)	145 (8.9)	291 (6.3)	0.001
Diabetes, n (%)	297 (18.2)	735 (16.0)	0.047
Chronic Kidney Disease, n (%)	188 (11.5)	351 (7.7)	<0.001
HIV, n (%)	35 (2.1)	49 (1.1)	0.002
Cancer, n (%)	115 (7.1)	319 (7.0)	0.945
Coronary Artery Disease, n (%)	117 (7.2)	447 (9.8)	0.002
Atrial Fibrillation, n (%)	65 (4.0)	237 (5.2)	0.065
Heart Failure, n (%)	101 (6.2)	238 (5.2)	0.143
Chronic Viral Hepatitis, n (%)	24 (1.5)	30 (0.7)	0.004
Liver Disease, n (%)	23 (1.4)	93 (2.0)	0.139
Acute Kidney Injury, n (%)	108 (6.6)	232 (5.1)	0.021
<b>Labs</b>			
WBC (K/uL), median [Q1,Q3]	7.3 [5.3,10.0]	7.7 [5.6,10.8]	0.001
Creatinine > 1.2, n (%)	603 (37.0)	1258 (27.4)	<0.001

Anion Gap (mEq/L), mean (SD)	13.4 (4.9)	12.8 (4.0)	<0.001
Potassium (mmol/L), mean (SD)	4.4 (0.9)	4.4 (0.8)	0.023
ALT (U/L), median [Q1,Q3]	25.0 [17.0,45.0]	30.0 [19.0,53.0]	<0.001
<b>Hospital Conditions</b>			
ICU, n (%)	222 (13.6)	763 (16.6)	0.004
Days after infection, median [Q1,Q3]	3.8 [0.6,8.5]	3.8 [0.7,8.6]	0.407
Hospital status, n (%)			0.003
Censored	144 (8.8)	364 (7.9)	
Deceased	300 (18.4)	1026 (22.4)	
Discharged	1187 (72.8)	3194 (69.7)	

**Table S4. Adjusted odds ratios of secondary outcomes for African American COVID-19 patients associated with ACE-I/ARB and other covariates**

	ICU (N=1,487)		AKI (N=1,487)	
	Adjusted OR (95% CI)	p-value	Adjusted OR (95% CI)	p-value
<b>Antihypertensive Medications</b>				
ACE-I/ARB	0.709 (0.419-1.198)	0.198	1.306 (0.721-2.364)	0.379
Calcium-channel blockers	0.953 (0.599-1.514)	0.838	1.043 (0.617-1.762)	0.876
Beta blockers	1.986 (1.253-3.146)	0.003	1.671 (0.989-2.824)	0.055
Diuretics	4.728 (2.918-7.660)	<0.001	0.590 (0.325-1.071)	0.083
<b>Patient Characteristics</b>				
Age	0.985 (0.969-1.002)	0.082	0.994 (0.974-1.015)	0.563
Male	1.102 (0.692-1.755)	0.682	0.954 (0.557-1.631)	0.862
Smoking Status: Not Asked	2.437 (1.362-4.360)	0.003	1.173 (0.597-2.307)	0.644
Smoking Status: Quit	1.020 (0.582-1.787)	0.946	0.763 (0.402-1.448)	0.407
Smoking Status: Yes	2.595 (1.127-5.976)	0.025	0.776 (0.261-2.313)	0.649
BMI	1.034 (1.008-1.060)	0.011	0.988 (0.956-1.020)	0.455
Temperature	0.755 (0.655-0.872)	<0.001	0.910 (0.759-1.090)	0.307
Max. Temperature	1.510 (1.310-1.740)	<0.001	0.857 (0.716-1.026)	0.093
O2 Saturation	0.996 (0.963-1.029)	0.793	0.976 (0.941-1.013)	0.206
Min. O2 Saturation	0.970 (0.960-0.981)	<0.001	0.999 (0.984-1.014)	0.877
Heart Rate	1.009 (0.997-1.021)	0.163	1.001 (0.988-1.014)	0.939
Respiratory Rate > 25	2.138 (1.156-3.954)	0.015	1.070 (0.518-2.211)	0.855
High BP (SBP>140 or DBP>90)	0.891 (0.567-1.399)	0.615	0.735 (0.431-1.253)	0.257
<b>Comorbidities</b>				
Asthma	0.891 (0.352-2.257)	0.808	3.210 (1.212-8.499)	0.019
COPD	0.557 (0.201-1.544)	0.261	1.517 (0.400-5.742)	0.540
Hypertension	0.873 (0.488-1.563)	0.649	1.675 (0.867-3.237)	0.125
Obstructive Sleep Apnea	2.457 (0.848-7.121)	0.098	0.211 (0.022-1.986)	0.174
Obesity	0.468 (0.214-1.025)	0.058	1.491 (0.611-3.641)	0.380
Diabetes	1.513 (0.873-2.622)	0.140	0.644 (0.345-1.200)	0.166
Chronic Kidney Disease	0.371 (0.179-0.770)	0.008	0.858 (0.443-1.663)	0.650
HIV	1.963 (0.537-7.173)	0.308	0.918 (0.217-3.879)	0.907
Cancer	1.054 (0.494-2.249)	0.891	0.801 (0.307-2.089)	0.650
Coronary Artery Disease	1.733 (0.808-3.713)	0.158	0.511 (0.199-1.315)	0.164
Atrial Fibrillation	0.628 (0.229-1.723)	0.367	1.558 (0.580-4.183)	0.379
Heart Failure	1.486 (0.650-3.399)	0.348	0.449 (0.150-1.346)	0.153
Liver Disease	0.291 (0.043-1.983)	0.207	1.907 (0.352-10.332)	0.454
<b>Labs</b>				
WBC	1.034 (0.991-1.078)	0.119	1.034 (0.983-1.088)	0.192
Creatinine > 1.2	0.685 (0.414-1.133)	0.141	38.538 (11.297-131.468)	<0.001
Anion Gap	1.044 (0.999-1.091)	0.053	1.045 (1.001-1.091)	0.044
Potassium	1.132 (0.881-1.455)	0.334	1.059 (0.831-1.351)	0.642
ALT	0.999 (0.996-1.002)	0.573	1.004 (1.000-1.007)	0.044
<b>Hospital Conditions</b>				
Duration (days)	1.053 (1.019-1.087)	0.002	1.007 (0.967-1.049)	0.723

**Table S5. Inverse propensity-weighted logistic regression results for COVID-19 in-hospital mortality in different race groups and ACE-I/ARB exposure time**

<b>Drug (Year 2019-2020)</b>	<b>All Races</b>		<b>African American</b>		<b>Non-African American</b>	
	<b>Adjusted OR (95% CI)</b>	<b>p-value</b>	<b>Adjusted OR (95% CI)</b>	<b>p-value</b>	<b>Adjusted OR (95% CI)</b>	<b>p-value</b>
<b>ACE-I/ARB use</b>						
Anytime use	0.673 (0.511-0.886)	0.005	0.381 (0.204-0.712)	0.003	0.765 (0.556-1.052)	0.100
In-hospital use	0.577 (0.418-0.795)	< 0.001	0.307 (0.140-0.672)	0.003	0.653 (0.450-0.948)	0.025
Outpatient use	0.941 (0.626-1.415)	0.770	0.534 (0.224-1.273)	0.157	0.927 (0.567-1.518)	0.764
<b>ACE-I use</b>						
Anytime use	0.951 (0.689-1.313)	0.761	0.684 (0.321-1.458)	0.326	1.016 (0.708-1.456)	0.933
In-hospital use	0.724 (0.489-1.071)	0.106	4.113 (0.409-41.37)	0.230	0.787 (0.496-1.250)	0.311
Outpatient use	1.347 (0.846-2.144)	0.209	0.824 (0.192-3.526)	0.794	1.730 (0.970-3.086)	0.063
<b>ARB use</b>						
Anytime use	0.636 (0.464-0.870)	0.005	0.428 (0.190-0.966)	0.041	0.655 (0.454-0.946)	0.024
In-hospital use	0.514 (0.340-0.775)	0.002	0.144 (0.049-0.428)	< 0.001	0.609 (0.384-0.966)	0.035
Outpatient use	0.761 (0.480-1.209)	0.248	0.637 (0.187-2.166)	0.470	0.594 (0.351-1.005)	0.053