

Supplemental Material

Adherence to the EAT-Lancet diet and risk of stroke and stroke subtypes: A Danish cohort study

Daniel B. Ibsen, PhD^{1,2}, Anne H. Christiansen, MSc¹, Anja Olsen, PhD^{1,3}, Anne Tjønneland, MD, PhD^{3,4}, Kim Overvad, MD, PhD¹, Alicja Wolk, DrMedSci², Janne K. Mortensen, MD, PhD^{5,6}, Christina C. Dahm, PhD¹

¹Department of Public Health, Aarhus University, Aarhus, Denmark

²Institute of Environmental Medicine, Karolinska Institute, Stockholm, Sweden

³Danish Cancer Society Research Center, Copenhagen, Denmark

⁴Department of Public Health, University of Copenhagen, Copenhagen, Denmark

⁵Aarhus University Hospital, Department of Neurology, Aarhus, Denmark

⁶Department of Clinical Medicine, Aarhus University, Aarhus, Denmark

Correspondence:

Dr Ibsen

dbi@ph.au.dk

Supplemental Tables

eTable 1 Construction of the EAT-Lancet diet score in the Danish Diet, Cancer and Health cohort

Dietary components	Original EAT-Lancet macronutrient intake (possible range) ¹	Criteria for scoring 1 point ² based on the EAT-Lancet reference diet ³	Food items based on the available foods in the food frequency questionnaire in the Danish Diet, Cancer and Health cohort	n (%) participants scoring 1 point for each dietary component (n=55,016)
Grains including whole grains				
1. Rice, wheat, corn and other	232 (total grains 0-60% of energy) g/day	≤464g/day and whole grain fiber >5g/day	Whole grains cereals, refined grain cereals	54,849 (100%)
Tubers and starchy vegetables				
2. Potatoes and casava	50 (0-100) g/day	≤100g/day	Potatoes, fatty potatoes,	18,820 (34%)
Vegetables				
3. All vegetables	300 (200-600) g/day	≥200g/day	Leafy vegetables, fruiting vegetables, cabbages, mushrooms, onion/garlic, stalk vegetables, other root vegetables	18,280 (33%)
Fruits				
4. All fruits	200 (100-300) g/day	≥100g/day	Citrus fruits, other fruits	36,009 (65%)
Dairy products				
5. Whole milk or derivative equivalents	250 (0-500) g/day	≤500g/day	Skimmed milk, semi-skimmed milk, whole milk, buttermilk, cheese, whole-fat fermented, low-fat fermented	38,911 (71%)
Protein sources				
6. Beef, lamb, pork	14 (0-28) g/day	≤28g/day	Red meat, processed meat	1088 (2%)
7. Chicken and other poultry	29 (0-58) g/day	≤58g/day	Poultry	52,181 (95%)
8. Eggs	13 (0-25) g/day	≤25g/day	Eggs	31,458 (57%)
9. Fish	28 (0-100) g/day	≤100g/day	Fish/lean/fresh, fish/lean/processed, fish/med fat/fresh, fish/med fat/processed, fish/fatty/fresh, fish/fatty/processed	53,092 (97%)
Legumes				
10. Dry beans, lentils, peas	50 (0-100) g/day	≤100g/day	Legumes	55,016 (100%)
11. Soy foods	25 (0-50) g/day	≤50g/day	Soy	55,016 (100%)
12. Peanuts or tree nuts	25 (0-75) g/day	≥25g/day	Nuts	215 (0%)
Added fats				

13. Palm oil, unsaturated oils, dairy fats (incl. in milk), lard or tallow	Individual limits for palm oil, unsaturated fat, dairy fats, lard and tallow	Ratio of 0.8 for unsaturated:saturated fat intake	Saturated fatty acids, monounsaturated fatty acids, polyunsaturated fatty acids	54,669 (99%)
Added sugar				
14. All sweeteners	31 (0-31) g/day	≤31g/day	Added sugar	28,682 (52%)

¹From Willett et al.^{e1}

²Each dietary component contributed 0 or 1 point resulting in a score ranging from 0 to 14 points.

³From Knuppel et al.^{e2}

eTable 2 Construction of the Alternate Healthy Eating Index-2010 score in the Danish Diet, Cancer and Health cohort based on Chiuve et al.¹

Dietary components	Unit	Criteria for scoring 0 point	Criteria for scoring 10 points	n (%) participants adhere ² (n=55,016)
Vegetables	Servings/day; 1 serving=118 g vegetables (excl. potatoes) or 236.6 g green leafy vegetables	0	≥5	126 (0.2%)
Fruit	Servings/day; 1 serving=1 piece of medium-sized fruit or 118 g berries	0	≥4	3259 (5.9%)
Whole grains	g/day			2622 (4.8%)
- men		0	90	
- women		0	70	
Omega-3 fatty acids	mg/day	0	250	48,499 (88.2%)
Polyunsaturated fat	E%	≤2	≥10	161 (0.3%)
Nuts and legumes	Servings/day; 1 serving=28 g or 15 ml peanut butter	0	≥1	253 (0.5%)
Sugar-sweetened beverages	Servings/day; 1 serving=227 g	≥1	0	295 (0.5%)
Red and processed meat	Servings/day; 1 serving=113 g red meat or 43 g processed meat	≥1.5	0	217 (0.4%)
Trans fat	E%	≥4	≤0.5	4914 (8.9%)
Sodium	mg/day	Highest fractile	Lowest fractile	4910 (8.9%)
Alcohol	units/day; 1 unit=113 ml wine, 340 ml beer or 43 ml spirits			23,891 (43.4%)
- men		≥3.5	0.5-2.0	
- women		≥2.5	0.5-1.5	

¹From Chiuve et al.^{e3}

²Adherence defined as scoring 10 point for each dietary component

eReferences

- e1. Willett W, Rockström J, Loken B, et al. Food in the Anthropocene: the EAT-Lancet Commission on healthy diets from sustainable food systems. *Lancet*. 2019;393:447–492.
- e2. Knuppel A, Papier K, Key TJ, Travis RC. EAT-Lancet score and major health outcomes: the EPIC-Oxford study. *Lancet*. 2019;394:213–214.
- e3. Chiuve SE, Fung TT, Rimm EB, et al. Alternative dietary indices both strongly predict risk of chronic disease. *J Nutr*. 2012;142:1009–1018.

eTable 3 Baseline characteristics of participants in the Danish Diet, Cancer and Health cohort across stroke subtypes¹

Characteristics	Cohort n=55,016			Total stroke n=2253			Ischemic stroke n=1858			Intracerebral hemorrhage n=276			Subarachnoid hemorrhage n=115		
	Median n	p10 %	p90	Median n	p10 %	p90	Median n	p10 %	p90	Median n	p10 %	p90	Median n	p10 %	p90
EAT-Lancet diet score	9	7	11	9	7	10	9	7	11	9	7	11	9	7	10
AHEI diet score	50	37	64	48	35	61	47	35	61	47	36	61	51	38	64
Age (years)	56	51	63	58	51	64	58	51	63	59	51	64	55	51	63
Men (%)	26208	48		1356	60		1148	62		160	60		38	33	
<9 years education (%)	8125	15		398	18		330	18		45	17		22	19	
Current smoker (%)	19735	36		1125	50		937	50		117	44		61	53	
Alcohol intake (g/d)	13	2	48	15	2	61	15	2	61	19	3	65	12	2	57
<30 min/day physical activity (%)	33257	60		1480	66		1208	65		179	67		83	72	
Current use of HRT in women (%)	8667	30		301	34		241	34		36	34		23	30	
Body mass index (kg/m²)	26	21	31	26	22	32	26	22	32	26	21	32	25	20	30
Waist circumference in men (cm)	95	84	109	97	85	111	97	85	111	98	86	111	95	83	106
Waist circumference in women (cm)	80	69	97	82	70	102	82	70	102	78	68	100	81	70	96
History of hypertension (%)	8773	16		624	28		518	28		78	29		25	22	
History of hypercholesterolemia (%)	4043	7		247	11		195	10		39	15		11	10	
History of diabetes (%)	1107	2		97	4		86	5		10	4		0	0	
History of myocardial infarction (%)	831	2		74	3		63	3		7	3		<5	<5	

¹All medians and percentiles are pseudo-medians and pseudo-percentiles meaning that they represent the average of the 5 surrounding values and groups with less than 5 individuals are masked in order to comply with European data protection regulations. AHEI: Alternate Healthy Eating Index, HRT: hormone replacement therapy.

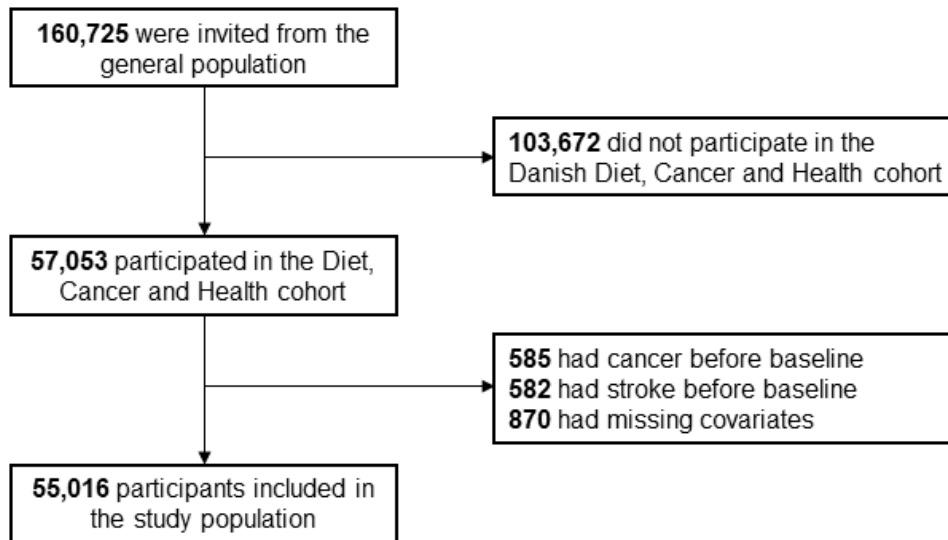
eTable 4 Cross-tabulation of stroke subtypes and age groups

Stroke subtype, n (%)	Age group					Total
	50-52 years	53-54 years	55-57 years	58-61 years	62-65 years	
Ischemic stroke	210 (11.3%)	257 (13.8%)	352 (18.9%)	436 (23.5%)	603 (32.5%)	1858
Intracerebral hemorrhage	30 (11.2%)	31 (11.6%)	39 (14.6%)	72 (27.0%)	95 (35.6%)	267
Subarachnoid hemorrhage	23 (20.0%)	22 (19.1%)	29 (25.2%)	21 (18.3%)	20 (17.4%)	115

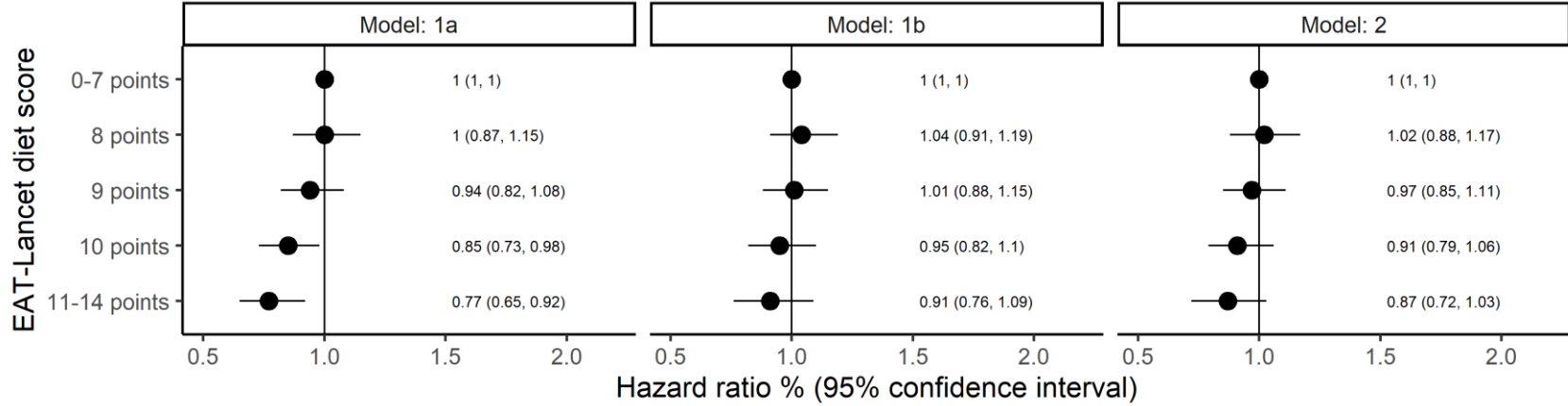
eTable 5 Cross-tabulation of adherence groups of the EAT-Lancet diet and Alternative Healthy Eating Index (AHEI).

EAT-Lancet group	AHEI group				
	13-40 points	41-46 points	47-52 points	53-58 points	59-110 points
0-7 points	3017	1646	952	506	197
8 points	3782	3207	2605	1769	826
9 points	2960	3737	3802	3502	2440
10 points	1003	1885	2638	3428	3677
11-14 points	157	526	1005	1835	3914

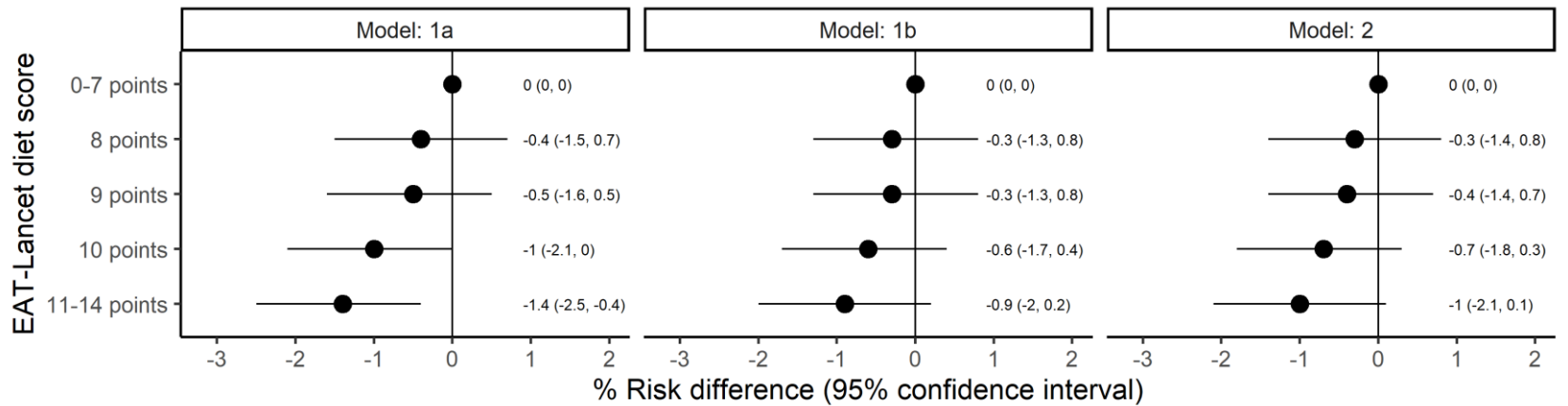
Supplemental Figures



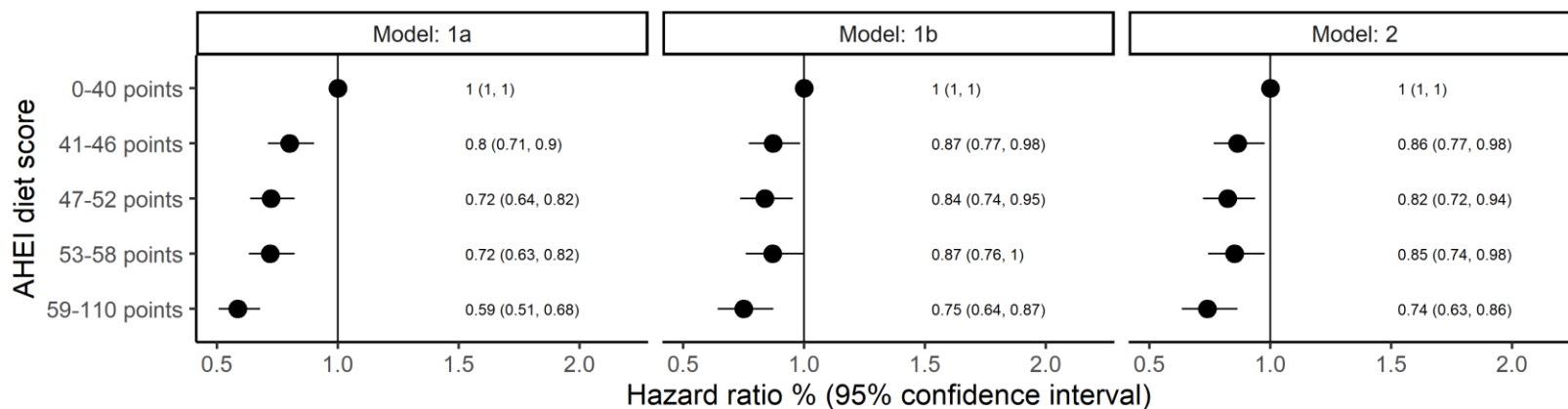
eFigure 1 Flowchart of participants from the Danish Diet, Cancer and Health cohort included in this study.



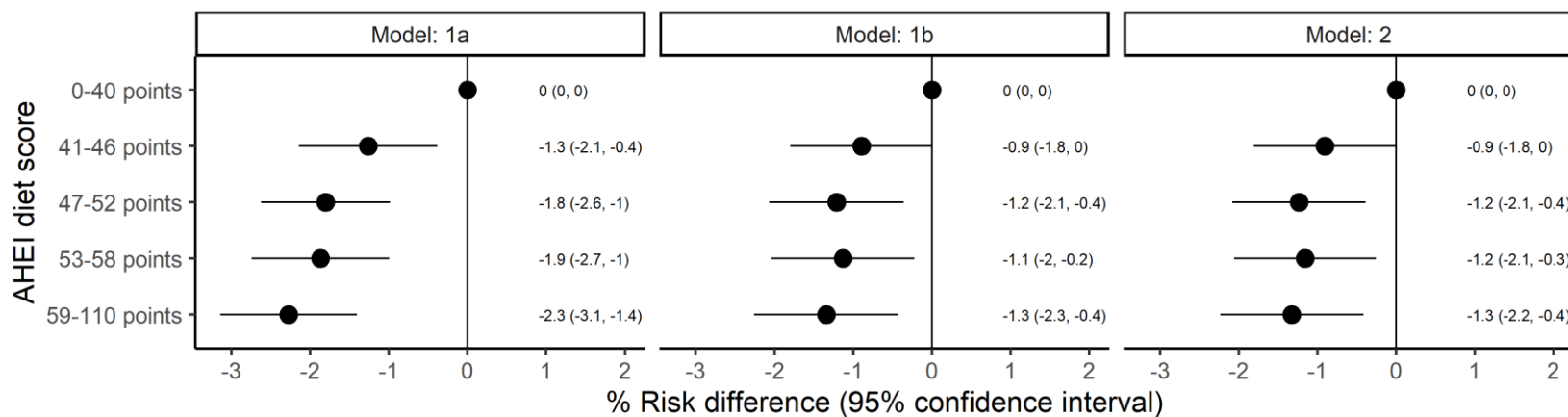
eFigure 2 Association between adherence to EAT-Lancet diet score and risk of stroke on the relative scale (hazard ratio). Model 1a adjusted for age (underlying time-scale), sex, date of inclusion and age at inclusion (as strata). Model 1b further adjusted for education, smoking status, physical activity, alcohol intake and hormone replacement therapy. Model 2 further adjusted for BMI, waist circumference, history of hypertension, hypercholesterolemia, diabetes and/or acute myocardial infarction. N = 55,016, N cases = 2253.



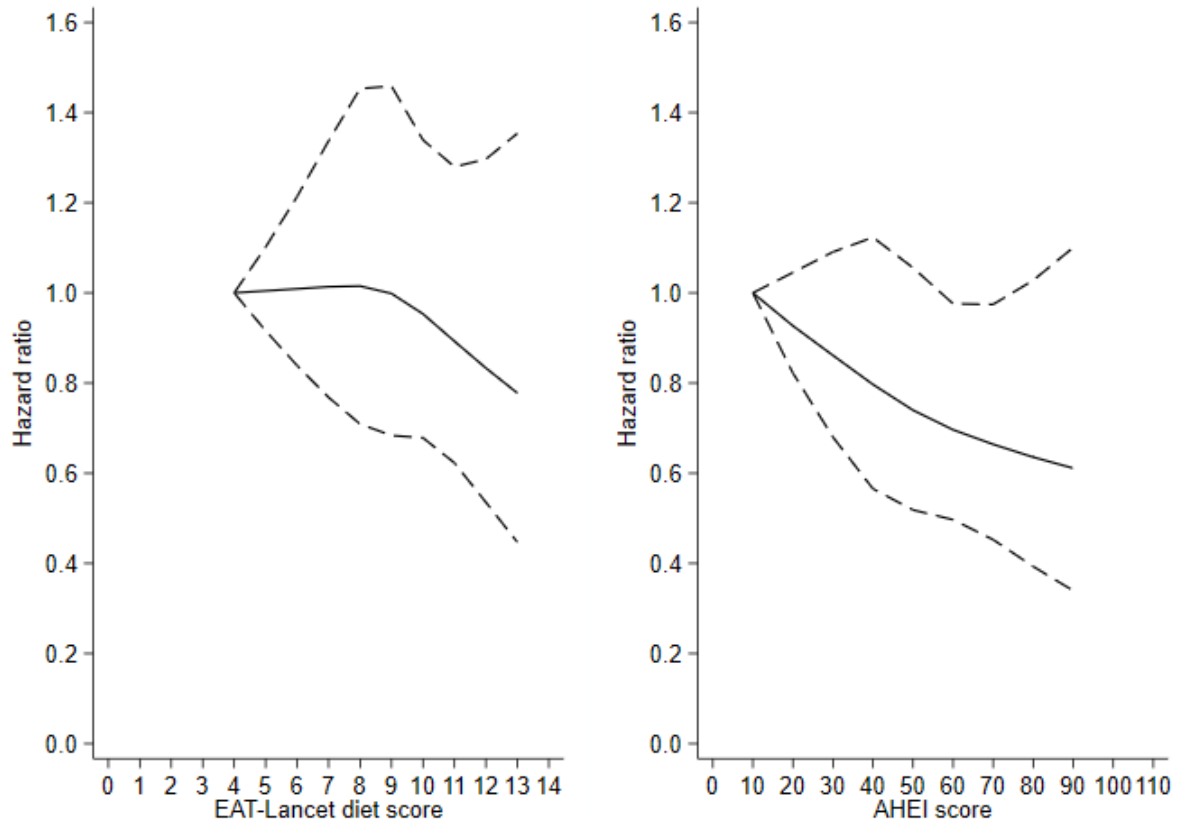
eFigure 3 Association between adherence to EAT-Lancet diet score and risk of stroke on the absolute scale (risk difference). Model 1a adjusted for age and sex. Model 1b further adjusted for education, smoking status, physical activity, alcohol intake and hormone replacement therapy. Model 2 further adjusted for BMI, waist circumference, history of hypertension, hypercholesterolemia, diabetes and/or acute myocardial infarction. N = 55,016, N cases after 15 years of follow-up = 2251.



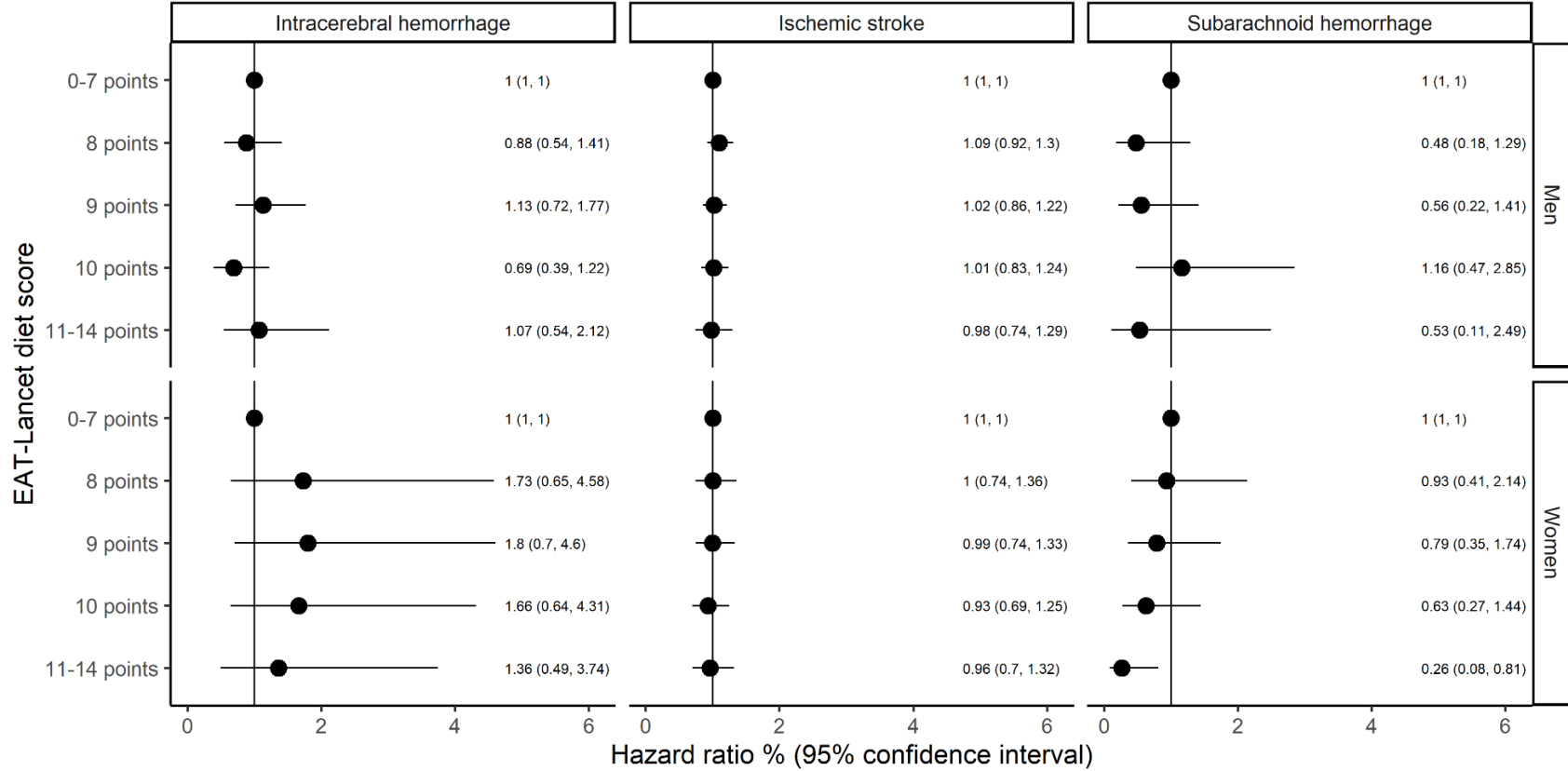
eFigure 4 Association between adherence to Alternate Healthy Eating Index (AHEI) score and risk of stroke on the relative scale (hazard ratio). Model 1a adjusted for age (underlying time-scale), sex, date of inclusion and age at inclusion (as strata). Model 1b further adjusted for education, smoking status, physical activity, alcohol intake and hormone replacement therapy. Model 2 further adjusted for BMI, waist circumference, history of hypertension, hypercholesterolemia, diabetes and/or acute myocardial infarction. N = 55,016, N cases = 2253.



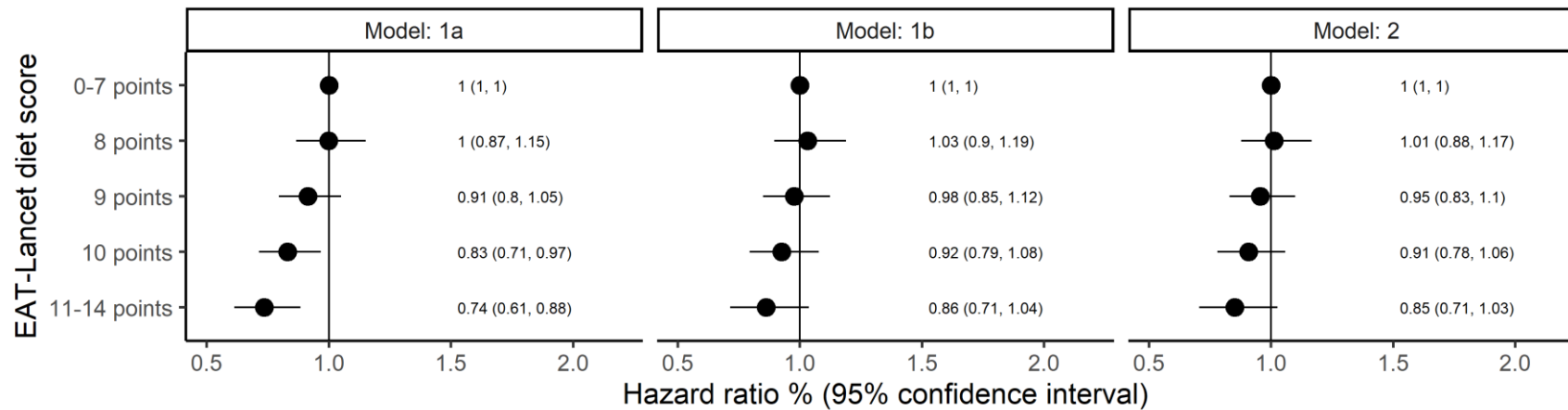
eFigure 5 Association between adherence to Alternate Healthy Eating Index (AHEI) score and risk of stroke on the absolute scale (risk difference). Model 1a adjusted for age and sex. Model 1b further adjusted for education, smoking status, physical activity, alcohol intake and hormone replacement therapy. Model 2 further adjusted for BMI, waist circumference, history of hypertension, hypercholesterolemia, diabetes and/or acute myocardial infarction. N = 55,016, N cases after 15 years of follow-up = 2251.



eFigure 6 Association between adherence to the EAT-Lancet diet score or Alternate Healthy Eating Index (AHEI) score and risk of stroke modelled as restricted cubic splines. Adjusted for age (underlying time-scale), sex, date of inclusion and age at inclusion (as strata), education, smoking status, physical activity, alcohol intake and hormone replacement therapy. N = 55,016, N cases = 2253.



eFigure 7 Association between adherence to the EAT-Lancet diet score and risk of stroke subtypes in middle-aged men and women. Adjusted for age (underlying time-scale), sex, date of inclusion and age at inclusion (as strata), education, smoking status, physical activity, alcohol intake and hormone replacement therapy. Men: N = 26,208, N intracerebral hemorrhage cases = 160, N ischemic stroke cases = 1148, N subarachnoid hemorrhage cases = 38. Women: N = 28,808, N intracerebral hemorrhage cases = 107, N ischemic stroke cases = 710, N subarachnoid hemorrhage cases = 77.



eFigure 8 Association between adherence to the EAT-Lancet diet score and risk of stroke excluding participants with a history of diabetes or acute myocardial infarction before study start. Model 1a adjusted for age (underlying time-scale), sex, date of inclusion and age at inclusion (as strata). Model 1b further adjusted for education, smoking status, physical activity, alcohol intake and hormone replacement therapy. Model 2 further adjusted for BMI, waist circumference, history of hypertension, hypercholesterolemia, diabetes and/or acute myocardial infarction. N = 53,130, N cases = 2089.