

1 **SARS-CoV-2 RNA load in the lower respiratory tract, viral RNAemia and N-**  
2 **antigenemia in critically ill adult COVID-19 patients: relationship with**  
3 **biomarkers of disease severity**

4 Beatriz Olea<sup>1</sup>, Eliseo Albert<sup>1</sup>, Ignacio Torres<sup>1</sup>, Roberto Gozalvo-Rovira<sup>2</sup>, Nieves  
5 Carbonell<sup>3</sup>, José Ferreres<sup>3</sup>, Sandrine Poujois<sup>1</sup>, Rosa Costa<sup>1</sup>, Javier Colomina<sup>1</sup>, Jesús  
6 Rodríguez<sup>2</sup>, María Luisa Blasco<sup>3</sup>, and David Navarro<sup>1,2\*</sup>

7 <sup>1</sup>*Microbiology Service, Clinic University Hospital, INCLIVA Health Research Institute,*  
8 *Valencia, Spain.*

9 <sup>2</sup>*Department of Microbiology, School of Medicine, University of Valencia, Valencia,*  
10 *Spain*

11 <sup>3</sup>*Medical Intensive Care Unit, Clinic University Hospital, INCLIVA Health Research*  
12 *Institute, Valencia, Spain.*

13

14 \***Correspondence:** David Navarro, Microbiology Service, Hospital Clínico  
15 Universitario, Instituto de Investigación INCLIVA, Valencia, and Department of  
16 Microbiology, University of Valencia, Valencia, Spain. Av. Blasco Ibáñez 17, 46010  
17 Valencia, Spain. Phone: 34(96)1973500; Fax: 34(96)3864173; E-mail:  
18 [david.navarro@uv.es](mailto:david.navarro@uv.es).

19

20 **SUMMARY:** SARS-CoV-2 RNA load in the lower respiratory tract and plasma and N-  
21 antigenemia followed different kinetics, correlated modestly with serum levels of  
22 inflammatory and tissue-damage biomarkers and lymphopenia and did not appear to  
23 increase overall mortality risk in critically ill adult COVID-19 patients.

24

25

26

27 **ABSTRACT**

28 **Background:** Little is known about the comparative kinetics of SARS-CoV-RNA load  
29 in the lower respiratory tract and in blood compartment in patients admitted to the  
30 intensive care unit, and how these relate to biomarkers of COVID-19 severity.

31 **Methods:** Seventy-three consecutive critically ill COVID-19 patients (median age, 65  
32 years) were recruited. Serial lower respiratory tract (n=165) and plasma (n=340)  
33 specimens were collected. RT-PCR and lateral flow immunochromatography assay  
34 were used for SARS-CoV-2 RNA quantitation and N protein detection in plasma,  
35 respectively. Serum levels of inflammatory and tissue-damage biomarkers in paired  
36 specimens were analyzed.

37 **Results:** SARS-CoV-RNA was detected in the lower respiratory tract of most patients  
38 (92%). Viral RNAemia and N-antigenemia were documented in 35.6% and 40.1% of  
39 patients, respectively. Viral RNAemia and N-antigenemia cleared at a faster rate than  
40 SARS-CoV-2 RNA in tracheal aspirates (TA). SARS-CoV-2 RNA load was higher  
41 ( $P<0.001$ ) in TA than in plasma, and correlated significantly ( $Rho, 0.41; P<0.001$ ). A  
42 modest correlation was found between SARS-CoV-2 RNA load in TA and plasma and  
43 levels of ferritin and lactose dehydrogenase ( $Rho\leq 0.3; P\leq 0.008$ ) in paired serum  
44 specimens. Neither the dynamics of SARS-CoV-2 RNA load in TA and plasma, nor N-  
45 antigenemia detection rate differed between surviving and deceased patients. Yet, a  
46 trend towards a higher mortality was seen in patients with viral RNAemia (OR; 2.82;  
47 95% CI, 0.94-8.47;  $P=0.06$ ).

48 **Conclusion:** Neither SARS-CoV-2 replication rate in the lower respiratory tract nor its  
49 presence in the blood appeared to critically impact on survival in ICU COVID-19  
50 patients.

51 **KEY WORDS:** COVID-19, SARS-CoV-2 RNA load, SARS-CoV-2 RNAemia, SARS-  
52 CoV-2 N-antigenemia, lower respiratory tract, inflammation biomarkers.

53

54

55

56

57

58

59

60

61

62

63

64

65

66

67

## 68 INTRODUCTION

69 Severe COVID-19 is a multisystem disease involving the lower respiratory tract (LRT)  
70 and extra-pulmonary organs such as the liver, kidney, spleen and central nervous system  
71 [1]. Following infection, SARS-CoV-2 initially replicates in the upper respiratory tract  
72 (URT) before reaching the LRT [2,3], where it may cause severe damage, by virtue of  
73 its own cytopathogenicity and notably by inducing a persistent, dysregulated pro-  
74 inflammatory state [4,5]. While evidence has accumulated suggesting a direct  
75 relationship between SARS-CoV-2 RNA load in the URT early after infection and  
76 progression to severe clinical forms of COVID-19 [6-8], data linking the extent of virus  
77 replication in the LRT with clinical outcomes are scarce [9-11]. In this context, it  
78 remains to be elucidated whether acute respiratory distress syndrome and multiple organ  
79 failure, frequently ensuing in critically ill patients, are driven by uncontrolled viral  
80 replication in the LRT, dysregulated host-immune response, or both. SARS-CoV-2 may  
81 access the systemic compartment early after infection, as has been shown for SARS-  
82 CoV and MERS [12,13]. In fact, depending upon clinical severity, SARS-CoV-2  
83 RNAemia can be detected in up to 88% of COVID-19 patients within the first week  
84 after symptoms onset [14-25], and has been associated with ICU admission, need for  
85 invasive mechanical ventilation, multiple organ failure and mortality rate [see meta-  
86 analysis in 26]. Likewise, SARS-CoV-2 nucleocapsid (N) antigenemia, which has also  
87 been found in a large percentage of COVID-19 patients [27,28], has been associated  
88 with higher ICU admission rates and overall mortality [27,29]. To our knowledge, no  
89 comprehensive analysis has been published concerning the interplay between the  
90 kinetics of SARS-CoV-2 RNA load in the LRT, viral RNAemia and N-antigenemia,  
91 and how these relate to the inflammatory state of patients with severe COVID-19.  
92 Studies of this nature may contribute in clarifying the pathogenesis of SARS-CoV-2

93 infection, as well as precisely identifying virological factors modulating COVID-19  
94 prognosis. Here, we addressed these issues in a single-centre cohort of critically ill adult  
95 COVID-19 patients.

## 96 **PATIENTS AND METHODS**

### 97 **Patients and specimens**

98 In this prospective observational study, 73 consecutive critically ill COVID-19 patients  
99 (51 males and 22 females; median age, 65 years; range, 21 to 80 years) were recruited  
100 during ICU stay between October 2020 and February 2021 (Table 1). Respiratory and  
101 plasma specimens were scheduled to be collected at least once a week from admission.  
102 A total of 195 respiratory specimens (30 nasopharyngeal and 165 tracheal aspirates) and  
103 340 plasma specimens were available for the analyses described below. Medical history  
104 and laboratory data were prospectively recorded. The current study was approved by the  
105 Ethics Committee of Hospital Clínico Universitario INCLIVA (May,2020).

### 106 **Detection of SARS-CoV-2 RNA by RT-PCR**

107 Nasopharyngeal (NP) specimens were placed in 3 ml of Universal Transport Medium  
108 (UTM, Becton Dickinson, Sparks, MD, USA). Tracheal aspirates (TA) from  
109 mechanically ventilated patients were collected undiluted in sterile containers.  
110 Specimens were kept at 4 °C until processed (within 6 hours of receipt). Plasma  
111 specimens were obtained by centrifugation of whole blood EDTA tubes, cryopreserved  
112 at -80 °C and retrieved for analyses within one month after collection. Non-previously  
113 thawed specimens were used for analyses. Nucleic acid extraction was performed using  
114 a magnetic microparticle-based protocol (Abbott mSample Preparation SystemDNA) on  
115 the Abbott m2000sp platform (Abbott Molecular (Des Plaines, IL, USA) with a starting  
116 sample volume of 400 µl. SARS-CoV-2 RNA amplification was carried out by the

117 Abbott RealTime SARS-CoV-2 assay, a dual target reverse transcription polymerase  
118 chain reaction (RT-PCR) assay amplifying the RdRp and N-genes, on the m2000rt  
119 platform, following the manufacturer's instructions. The analytical sensitivity of the  
120 RT-PCR assay in TA and plasma specimens was assessed by spiking (in quintuplicate)  
121  $10\text{-}10^4$  copies/ml of the AMPLIRUN® TOTAL SARS-CoV-2 RNA Control (Vircell  
122 SA, Granada, Spain) into RT-PCR negative TA or plasma samples. The limit of  
123 detection (LOD) was found to be approximately 100 copies/ml (95%) for both matrices  
124 (not shown), in agreement with previous estimates using NP [30,31]. SARS-CoV-2  
125 viral loads are given in copies/ml throughout the study, as estimated using the  
126 abovementioned reference material. All specimens from a given patient were analysed  
127 in the same run in singlets.

#### 128 **Detection of SARS-CoV-2 N protein in plasma**

129 The CLINITEST® Rapid COVID-19 Antigen Test (Siemens, Healthineers, Erlangen,  
130 Germany), a lateral flow immunochromatography (LFIC) device licensed for detection  
131 of SARS-CoV-2 nucleocapsid protein NP or nasal swabs, was used on plasma  
132 specimens. The limit of detection (LOD) of the assay in plasma was determined by  
133 spiking a pre-pandemic plasma pool testing negative by RT-PCR with 10, 25, 50, 100  
134 and 150 pg/ml of a recombinant N protein (MT-25C19NC, Certest Biotec S.L.,  
135 Zaragoza, Spain). The LOD was found to be at least 50 pg/ml (Supplementary Fig. 1).  
136 Depleting experiments using a rabbit anti-N protein antibody (40143-R019;  
137 SinoBiological) confirmed the true nature of SARS-CoV-2 N detected in a number of  
138 discordant plasma specimens (testing negative by RT-PCR), as described in  
139 supplementary methods and shown in Supplementary Fig. 2.

#### 140 **Laboratory measurements**

141 Clinical laboratory tests included serum levels of ferritin, D-Dimer (D-D), C reactive  
142 protein (CRP), interleukin-6 (IL-6), lactose dehydrogenase (LDH) and absolute  
143 lymphocyte counts.

#### 144 **Statistical methods**

145 Frequency comparisons for categorical variables were carried out using Fisher's exact  
146 test. Differences between medians were compared using the Mann-Whitney U test.  
147 Spearman's rank test was used for analysis of correlation between continuous variables.  
148 Two-sided exact *P* values were reported. A *P* value <0.05 was considered statistically  
149 significant. The level of agreement between qualitative results provided by paired  
150 virological assays was assessed using Kappa-Cohen statistics. Logistic regression  
151 analyses were performed to assess risk factors for all-cause mortality. Parameters  
152 yielding *P* values <0.1 in univariate analyses were introduced in multivariate models.  
153 The analyses were performed using SPSS version 20.0 (SPSS, Chicago, IL, USA).

### 154 **RESULTS**

#### 155 **Patient clinical features**

156 Patients were admitted to ICU at a median of 9 days (range, 2–25) after onset of  
157 symptoms. All patients presented with pneumonia and imaging findings compatible  
158 with COVID-19 on chest-x ray or CT-scan, and most eventually needed mechanical  
159 ventilation (87.7%). Median time of ICU stay was 18 days (range, 2–67). A total of 16  
160 and 27 patients were under remdesivir and tocilizumab treatment, respectively, at ICU  
161 admission. Corticosteroids were given to 70 patients. A total of 29 patients died, at a  
162 median of 22 days (range, 7–66) after ICU admission.

#### 163 **Kinetics of SARS-CoV-2 RNA load in the lower respiratory tract**

164 Of the 64 patients undergoing mechanical ventilation, 61 had one or more TA collected  
165 (total number, 165; median of 2 specimens/patient; range, 1–11). The remaining three  
166 patients were not sampled. SARS-CoV-2 RNA was detected in 109 TA from 56 patients  
167 (91.8%). The remaining five patients tested negative for SARS-CoV-2 RNA in TA but  
168 had one or more positive NP collected prior to mechanical ventilation.

169 SARS-CoV-2 RNA load in TA ranged between 3.03 and 10.6 log<sub>10</sub> copies/ml (median,  
170 6.5 log<sub>10</sub> copies/ml). The dynamics of SARS-CoV-2 RNA load over time in TA is  
171 shown in Fig. 1A. Viral load remained relatively stable across the first two weeks from  
172 symptoms onset and began to decrease afterwards. No patient tested positive for SARS-  
173 CoV-2 RNA in TA beyond day 42.

174 Neither remdesivir nor tocilizumab administration appeared to have a major impact on  
175 the dynamics of SARS-CoV-2 load in TA (Fig. 2, Supplementary Table 1).

#### 176 **SARS-CoV-2 RNAemia and N-antigenemia**

177 A total of 340 plasma specimens from 73 patients (median, 4 samples/patient; range, 1-  
178 16) were available for analyses. SARS-CoV-2 RNAemia could be detected in 37 plasma  
179 specimens from 26 patients (35.6%). Median time to first detection of viral RNA in  
180 plasma was 10 days after symptoms onset (range, 3–32 days). The range of SARS-CoV-  
181 2 RNA loads measured in plasma was 1.69 to 5.27 log<sub>10</sub> copies/ml. Median SARS-CoV-  
182 2 RNA load was significantly lower in plasma (3.03 log<sub>10</sub> copies/ml) than in paired TA  
183 (Fig. 3A). A moderate yet significant correlation was found between SARS-CoV-2  
184 RNA levels in TA and in paired plasma specimens (Fig. 3B). The dynamics of viral  
185 RNAemia are shown in Fig. 1B. SARS-CoV-2 RNAemia cleared at a faster rate than  
186 viral load in TA. In fact, viral RNAemia was not detected beyond day 32 after onset of



187 symptoms. A similar conclusion was drawn taking only paired TA and plasma  
188 specimens into consideration for the analyses (Supplementary Fig. 3).

189 SARS-CoV-2 RNA load in TA was significantly higher ( $P<0.001$ ) in presence than  
190 absence of concomitant viral RNAemia (median, 9.5 log<sub>10</sub> copies/ml; range, 4.3 to 10.4  
191 log<sub>10</sub> copies/ml vs. median, 6.2 log<sub>10</sub> copies/ml; range, 3.0-10.6 log<sub>10</sub> copies/ml).

192 SARS-CoV-2 N-antigenemia was detected in 43 samples from 30 patients (41.0%).  
193 Median time to first N-antigenemia detection was 9 days after onset of symptoms  
194 (range, 3–29 days). No patient had N-antigenemia beyond day 32 after symptoms onset.  
195 The level of agreement between the qualitative results returned by plasma RT-PCR and  
196 N-antigenemia assay was moderate ( $k=0.57$ ;  $P<0.0001$ ). As shown in Fig. 4A, a trend  
197 towards higher SARS-CoV-2 RNA loads was seen in plasma specimens testing positive  
198 for N-antigenemia assay than in those yielding negative results ( $P=0.083$ ). In turn,  
199 SARS-CoV-2 RNA load in TA was significantly higher ( $P<0.001$ ) in the presence of  
200 concomitant N-antigenemia than in its absence (Fig. 4B).

#### 201 **Relationship between virological parameters, plasma levels of inflammatory or** 202 **tissue-damage biomarkers and absolute lymphocyte counts**

203 Plasma levels of ferritin and LDH, but not IL-6, CRP, or D-D, were significantly higher  
204 when SARS-CoV-2 RNA was detected in paired TA or plasma specimens (Table 2), yet  
205 SARS-CoV-2 RNA loads in TA and plasma correlated moderately with plasma levels  
206 of ferritin and LDH (Fig. 5A and 5B, respectively). The degree of correlation between  
207 SARS-CoV-2 RNA load and serum levels biomarkers was similar when all respiratory  
208 specimens (including NP) were considered for the analyses (not shown).

209 Plasma levels of all biomarkers except IL-6 were significantly higher in specimens  
210 testing positive for SARS-CoV-2 N antigen than in those returning negative results

211 (Table 2). Lymphocyte counts were significantly lower in the presence of SARS-CoV-2  
212 RNA in TA and plasma or N antigen in plasma (Table 2). Nevertheless, the level of  
213 correlation (inverse) between SARS-CoV-2 RNA load in TA and plasma and  
214 lymphocyte counts was modest (Fig. 6).

### 215 **Virological parameters and mortality**

216 Dynamics of SARS-CoV-2 RNA load (initial, peak and trajectory) in TA following ICU  
217 admission were comparable across patients who either died or survived (Fig. 7 and  
218 Supplementary Fig. 4). Despite initial and peak SARS-CoV-2 RNA load in plasma  
219 being similar in surviving and deceased patients ( $P=0.11$  and  $P=0.66$ , respectively;  
220 Supplementary Fig. 4), a trend towards a higher mortality rate ( $P=0.06$ ) was noticed  
221 among patients exhibiting viral RNAemia (Table 3) in multivariate models adjusted for  
222 sex, age, comorbidities, APACHE II score and signs of organ failure. Occurrence of  
223 SARS-CoV-2 N-antigenemia was not associated with increased mortality ( $P=0.59$ ).

### 224 **DISCUSSION**

225 Here, we conducted a comprehensive comparative analysis of the kinetics of SARS-  
226 CoV-2 RNA load in the lower respiratory tract and blood compartment in a cohort of  
227 adult COVID-19 patients admitted to ICU, of whom almost 90% underwent invasive  
228 ventilation. The potential relationship between SARS-CoV-2 load in these  
229 compartments and systemic inflammation status, absolute lymphocyte counts and  
230 mortality was also investigated. In our view, the data presented herein could have  
231 relevant pathogenetic implications, and the following findings are underlined.

232 First, from a kinetics perspective, SARS-CoV-2 load in TA showed a descending  
233 trajectory from around two weeks after symptoms onset and was cleared in all survivors  
234 at seven weeks. Interestingly, neither remdesivir nor tocilizumab appeared to have a

235 major impact on these kinetics. This is in line with previous studies showing that neither  
236 drug had a tangible effect on SARS-CoV-2 RNA load in the upper airways, even when  
237 administered early after symptoms onset [33,34].

238 SARS-CoV-2 RNAemia and N-antigenemia followed comparable time courses to viral  
239 load in TA, but they cleared more rapidly. Detection of both viral RNAemia and N-  
240 antigenemia was more likely in patients exhibiting higher SARS-CoV-2 loads in TA.  
241 Moreover, SARS-CoV-2 RNA load was substantially higher in TA than in paired  
242 plasma, and a moderate correlation was found between SARS-CoV-2 RNA load in TA  
243 and in paired plasma specimens. Collectively, these data suggested that LRT may be a  
244 substantial source of SARS-CoV-2 RNA or N protein circulating in the peripheral blood  
245 compartment. Given that detection of SARS-CoV-2 RNA in blood has not been  
246 associated with infectious virus [19], we speculate that free RNA and soluble N protein,  
247 probably leaking from the LRT (and perhaps from other tissue sources), are the main  
248 biological forms of SARS-CoV-2 present in plasma.

249 Second, SARS-CoV-2 RNAemia could be documented in one or more specimens from  
250 35.6% of patients. This figure is substantially lower than was reported for ICU patients  
251 in other studies (77% in [14] and 88% in [18]). In these studies [14,18], however, a  
252 droplet-based digital PCR was used, which seemingly outperformed conventional RT-  
253 PCR assays such as the one used herein in terms of sensitivity. The above discrepancy  
254 could also be related to different timing of sample collection across studies, potentially  
255 important given the relatively rapid clearance of viral RNAemia documented in the  
256 current study.

257 Third, SARS-CoV-2 N-antigenemia was detected in 41.0% of patients overall by means  
258 of LFIC, with an analytical sensitivity of around 50 pg/ml: those exhibiting higher

259 plasma viral RNA loads were more likely to test positive, as previously reported [28].  
260 This concurs with the figure (49%) reported in a previous study [29] also using LFIC,  
261 but is much lower than the proportion found by Hingrat et al. [28] in a small subcohort  
262 of ICU patients (n=17), of whom most tested positive within the first two weeks after  
263 symptoms onset. Notably, an ultrasensitive immunoassay (limit of detection of 2.8  
264 pg/ml) was employed in that study [28]. We did not measure serum antibodies against  
265 SARS-CoV-2, which may impact on the rate of N-antigenemia detection [29], and  
266 precludes certainty concerning the comparability of our data with those reported in the  
267 other studies [28,29]. Interestingly, in line with a previous report [28], N-antigenemia  
268 had a higher detection rate than viral RNAemia, which could be explained by the fact  
269 that N protein is likely less prone to degradation than RNA in cryopreserved-thawed  
270 specimens.

271 Fourth, we provide some evidence linking the presence of detectable SARS-CoV-2  
272 RNA in TA and plasma, as well as N-antigenemia, with increased levels of  
273 inflammation or tissue damage biomarkers (ferritin and LDH, respectively), and  
274 decreased absolute lymphocyte counts, although the correlation between levels of these  
275 biomarkers and viral loads in TA and plasma was modest at best. Previous studies  
276 reported a significant association between SARS-CoV-2 RNAemia detection and blood  
277 levels of IL-6 [21] or several cytokines and chemokines, such as IL-6, IL-10, C-reactive  
278 protein, ferritin, D-D and LDH [14]. In these studies, however, a single time point  
279 specimen per patient collected at ICU admission was considered for the analyses, as  
280 opposed to the serial specimens used herein. Unfortunately, serum IL-6 levels were not  
281 available in a large percentage of patients of the current cohort.

282 Fifth, data from previous studies point to an association between protracted SARS-  
283 CoV-2 RNA clearance in LRT and/or simple presence of SARS-CoV-2 RNA in LRT

284 and increased risk of mortality [9,10,34]. In these studies, a wide variety of LRT  
285 specimens were used, including sputa, TA and bronchoalveolar lavage. No data proving  
286 a dose-dependent relationship between SARS-CoV-2 RNA load in LRT and mortality  
287 were provided. Herein, we found no differences between surviving and deceased  
288 patients in initial SARS-CoV-2 RNA load after ICU admission, viral peak load or  
289 overall dynamics of SARS-CoV-2 RNA load in TA.

290 Sixth, both SARS-CoV-2 RNAemia and N-antigenemia have been independently  
291 associated with poor clinical outcome in mixed cohorts [see meta-analysis in 26] and in  
292 series including only ICU patients [14,29], in which patients who died displayed higher  
293 viral RNA loads in plasma collected at ICU admission than those who survived [14].  
294 We found a trend towards an association between qualitative detection of SARS-CoV-2  
295 RNA in plasma and mortality in multivariate logistic regression models, and failed to  
296 demonstrate higher initial or peak viral loads in deceased patients. We also found no  
297 evidence of an association between detection of N-antigenemia and mortality rate.  
298 Nevertheless, these data must be interpreted with caution due to the limited number of  
299 death events in our series.

300 The main limitations of the current study are the relatively small sample size, the non-  
301 negligible number of missing specimens, specially TA, compared with the planned  
302 sample collection schedule, and analytical methods which may have underestimated the  
303 viral RNAemia and N-antigenemia detection rate. Analysis of sequential specimens  
304 from patients could be considered a strength of the research.

305 The current study contributes to filling a knowledge gap on the comparative dynamics  
306 of SARS-CoV-2 in LRT and in the systemic compartment in ICU patients, and provides  
307 further insight into the pathogenesis of SARS-CoV-2 infection in this patient subset. In

308 this respect, whether poor clinical outcomes in critically ill patients are directly linked to  
309 the extent of virus replication in the LRT, to a dysregulated pro-inflammatory state  
310 (cytokine storm) [4,5], or both, remains to be elucidated. In our view, our data fit better  
311 with a pathogenetic model, in which SARS-CoV-2 replication in the LRT or its  
312 presence in the blood compartment at a certain point over the course of ICU stay might  
313 not be a major driver of systemic inflammation, lymphopenia, lung dysfunction,  
314 multisystemic organ failure and death. This does not invalidate the importance of virus  
315 replication rate in the URT in the early stage after infection in determining the clinical  
316 course of COVID-19 [6-8]. Further studies are needed to resolve this issue.

### 317 **ACKNOWLEDGMENTS**

318 No public or private funds were used for the current study. We are grateful to all  
319 personnel who work at Clinic University Hospital, in particular to those at Microbiology  
320 laboratory and the Intensive Care Unit for their commitment in the fight against  
321 COVID-19. Eliseo Albert holds a Juan Rodés Contract (JR20/00011) from the Health  
322 Institute Carlos III. Ignacio Torres holds a Río Hortega Contract (CM20/00090) the  
323 Health Institute Carlos III. We thank Siemens Healthineers (Erlangen, Germany) for  
324 providing reagents free of charge.

### 325 **FINANCIAL SUPPORT**

326 This work received no public or private funds.

### 327 **CONFLICTS OF INTEREST**

328 The authors declare no conflicts of interest.

### 329 **AUTHOR CONTRIBUTIONS**

330 BA, EA, IT, RG-R, RC, JC and JR: Methodology and validation of data. NC, JF and  
331 MLB: Medical care of ICU patients. DN: Conceptualization, supervision, writing the  
332 original draft. All authors reviewed the original draft.

### 333 **REFERENCES**

334 1. Berlin DA, Gulick RM, Martinez FJ. Severe Covid-19. *N Engl J Med.*  
335 **2020**;383:2451-2460.

336 2. Zheng S, Fan J, Yu F, et al. Viral load dynamics and disease severity in patients  
337 infected with SARS-CoV-2 in Zhejiang province, China, January-March 2020:  
338 retrospective cohort study. *BMJ.* **2020**;369:m1443

339 3. Cevik M, Tate M, Lloyd O, Maraolo AE, Schafers J, Ho A. SARS-CoV-2, SARS-  
340 CoV, and MERS-CoV viral load dynamics, duration of viral shedding, and  
341 infectiousness: a systematic review and meta-analysis. *Lancet Microbe.* **2021**;2:e13-e22.

342 4. Fajgenbaum DC, June CH. Cytokine Storm. *N Engl J Med.* **2020**;383:2255-2273.

343 5. Leisman DE, Ronner L, Pinotti R, et al. Cytokine elevation in severe and critical  
344 COVID-19: a rapid systematic review, meta-analysis, and comparison with other  
345 inflammatory syndromes. *Lancet Respir Med.* **2020**;8:1233-1244.

346 6. Alteri C, Cento V, Vecchi M, et al. Nasopharyngeal SARS-CoV-2 load at hospital  
347 admission as predictor of mortality. *Clin Infect Dis.* **2020** Jul 16:ciaa956.

348 7. Néant N, Lingas G, Le Hingrat Q, et al. Modeling SARS-CoV-2 viral kinetics and  
349 association with mortality in hospitalized patients from the French COVID cohort. *Proc*  
350 *Natl Acad Sci U S A.* **2021**;118:e2017962118.

351 8. Pujadas E, Chaudhry F, McBride R, et al. SARS-CoV-2 viral load predicts COVID-  
352 19 mortality. *Lancet Respir Med.* **2020**;8:e70.

- 353 9. Buetti N, Wicky PH, Le Hingrat Q, et al. SARS-CoV-2 detection in the lower  
354 respiratory tract of invasively ventilated ARDS patients. *Crit Care*. **2020**; 24:610.
- 355 10. Huang Y, Chen S, Yang Z, et al. SARS-CoV-2 Viral Load in Clinical Samples from  
356 Critically Ill Patients. *Am J Respir Crit Care Med*. **2020**;201:1435-1438.
- 357 11. Wang Y, Zhang L, Sang L, et al. Kinetics of viral load and antibody response in  
358 relation to COVID-19 severity. *J Clin Invest*. **2020**;130:5235-5244.
- 359 12. Grant PR, Garson JA, Tedder RS, Chan PK, Tam JS, Sung JJ. Detection of SARS  
360 coronavirus in plasma by real-time RT-PCR. *N Engl J Med*. **2003**;349:2468-2469.
- 361 13. Corman VM, Albarrak AM, Omrani AS, et al. Viral Shedding and Antibody  
362 Response in 37 Patients with Middle East Respiratory Syndrome Coronavirus  
363 Infection. *Clin Infect Dis*. **2016**;62:477-483.
- 364 14. Bermejo Martin JF, González Rivera M, Almansa R, et al. Viral RNA load in  
365 plasma is associated with critical illness and a dysregulated host response in  
366 COVID-19. *Crit Care*. **2020**; 24:691.
- 367 15. Berastegui Cabrera J, Salto Alejandro S, Valerio M, et al. SARS-CoV-2  
368 RNAemia is associated with severe chronic underlying diseases but not with  
369 nasopharyngeal viral load. *J Infect*. **2020**:S0163-4453:30719-2.
- 370 16. Hogan CA, Stevens BA, Sahoo MK, et al. High frequency of SARS-CoV-2  
371 RNAemia and association with severe disease. *Clin Infect Dis*. **2020**:c1aa1054
- 372 17. Xu D, Zhou F, Sun W, et al. Relationship between serum SARS-CoV-2 nucleic  
373 acid (RNAemia) and organ damage in COVID-19 patients: a cohort study. *Clin Infect*  
374 *Dis*. **2020**:c1aa1085.



- 375 18. Veyer D, Kernéis S, Poulet G, et al. Highly sensitive quantification of plasma severe  
376 acute respiratory syndrome coronavirus 2 RNA sheds light on its potential clinical  
377 value. *Clin Infect Dis. Clin Infect Dis.* **2020**:ciaa1196
- 378 19. Andersson MI, Arancibia-Carcamo CV, Auckland K, et al. SARS-CoV-2 RNA  
379 detected in blood products from patients with COVID-19 is not associated with  
380 infectious virus. *Wellcome Open Res.* **2020**; 5: 181.
- 381 20. Prebensen C, Myhre PL, Jonassen C, et al. SARS-CoV-2 RNA in plasma is  
382 associated with ICU admission and mortality in patients hospitalized with COVID-19.  
383 *Clin Infect Dis.* **2020**:ciaa1338.
- 384 21. Chen X, Zhao B, Qu Y, et al. Detectable serum SARS-CoV-2 viral load  
385 (RNAemia) is closely correlated with drastically elevated interleukin 6 (IL-6) level in  
386 critically ill COVID-19 patients. *Clin Infect Dis.* **2020**; 71: 1937-1942.
- 387 22. Hagman K, Hedenstierna M, Gille-Johnson P, et al. SARS-CoV-2 RNA in serum  
388 as predictor of severe outcome in COVID-19: a retrospective cohort study. *Clin Infect*  
389 *Dis.* **2020**:ciaa1285.
- 390 23. Huang C, Wang Y, Li X, et al. Clinical features of patients infected with 2019 novel  
391 coronavirus in Wuhan, China. *Lancet.* **2020**; 395: 497-506.
- 392 24. Chen W, Lan Y, Yuan X, et al. Detectable 2019-nCoV viral RNA in blood is a  
393 strong indicator for the further clinical severity. *Emerg Microbes Infect.* **2020**; 9: 469-  
394 473.
- 395 25. Eberhardt KA, Meyer-Schwickerath C, Heger E, et al. RNAemia corresponds to  
396 disease severity and antibody response in hospitalized COVID-19 patients. *Viruses.*  
397 **2020**; 12: 1045.

- 398 26. Tang K, Wu L, Luo Y, Gong B. Quantitative assessment of SARS-CoV-2 RNAemia  
399 and outcome in patients with coronavirus disease 2019. *J Med Virol.* **2021** Feb 16. doi:  
400 10.1002/jmv.26876
- 401 27. Ogata AF, Maley AM, Wu C, et al. Ultrasensitive serial profiling of SARS-CoV-2  
402 antigens and antibodies in plasma to understand disease progression in COVID-19  
403 patients with severe disease. *Clin Chem.* **2020**;66:1562e72
- 404 28. Hingrat QL, Visseaux B, Laouenan C, et al. Detection of SARS-CoV-2 N-antigen in  
405 blood during acute COVID-19 provides a sensitive new marker and new testing  
406 alternatives. *Clin Microbiol Infect.* **2020**:S1198-743X(20)30721-7.
- 407 29. Martin-Vicente M, Almansa R, Martínez I, et al. Absent or insufficient anti-SARS-  
408 CoV-2 S antibodies at ICU admission are associated to higher viral loads in plasma,  
409 antigenemia and mortality in COVID-19 patients. *medRxiv* **2021**,  
410 <https://doi.org/10.1101/2021.03.08.21253121>
- 411 30. Mostafa HH, Hardick J, Morehead E, Miller JA, Gaydos CA, Manabe YC.  
412 Comparison of the analytical sensitivity of seven commonly used commercial SARS-  
413 CoV-2 automated molecular assays. *J Clin Virol.* **2020**;130:104578.
- 414 31. Degli-Angeli E, Dragavon J, Huang ML, et al. Validation and verification of the  
415 Abbott RealTime SARS-CoV-2 assay analytical and clinical performance. *J Clin Virol.*  
416 **2020**;129:104474.
- 417 32. Goldberg E, Ben Zvi H, Sheena L, et al. A real-life setting evaluation of the effect of  
418 remdesivir on viral load in COVID-19 patients admitted to a large tertiary center in  
419 Israel. *Clin Microbiol Infect.* **2021**:S1198-743X(21)00113-0

420 33. Masiá M, Fernández-González M, Padilla S, et al. Impact of interleukin-6 blockade  
421 with tocilizumab on SARS-CoV-2 viral kinetics and antibody responses in patients with  
422 COVID-19: A prospective cohort study. *EBioMedicine*. **2020**;60:10299

423 34. Bitker L, Dhelft F, Chauvelot L, et al. Protracted viral shedding and viral load are  
424 associated with ICU mortality in Covid-19 patients with acute respiratory failure. *Ann*  
425 *Intensive Care*. **2020**;10:167.

426

## 427 **FIGURE LEGENDS**

428 **Figure 1.** Kinetics of SARS-CoV-RNA load in the lower respiratory tract (tracheal  
429 aspirates) (A) and plasma (B) of critically ill patients undergoing invasive ventilation.

430 **Figure 2.** Effect of remdesivir or tocilizumab treatment on the kinetics of SARS-CoV-2  
431 RNA load in the lower respiratory tract (tracheal aspirates) in critically ill patients  
432 undergoing invasive ventilation. Panels A and C depict the kinetics of SARS-CoV-2  
433 RNA load in patients receiving remdesivir (A) or tocilizumab (C). The arrow indicates  
434 the time of treatment initiation. Remdesivir was administered to 16 patients at a median  
435 of 7 days (range, 2–13) since symptoms onset, for a median of 4 days (range, 1–5).  
436 Tocilizumab was prescribed to 27 patients (a single dose in 24 patients and two doses in  
437 the remaining three patients) at a median of 9 days (range, 3-28) since the onset of  
438 symptoms. Panels B and D depict SARS-CoV-2 RNA load kinetics in patients not  
439 treated with remdesivir (B) or tocilizumab (D).

440 **Figure 3.** SARS-CoV-2 in the lower respiratory tract (tracheal aspirates) and plasma in  
441 critically ill patients undergoing invasive ventilation. Panel A shows SARS-CoV-2  
442 RNA load in both compartments. Panel B shows the level of correlation between

443 SARS-CoV-2 RNA load in tracheal aspirates and plasma specimens. *P* values and  
444 Spearman Rho value are shown.

445 **Figure 4.** SARS-CoV-2 RNA load in plasma (A) and lower respiratory tract, i.e.,  
446 tracheal aspirates (B) in critically ill patients undergoing invasive ventilation, in the  
447 presence or absence of SARS-CoV-2 N protein in paired plasma specimens. *P* values  
448 for comparisons are shown.

449 **Figure 5.** Correlation of serum levels of ferritin (A, C) and lactose dehydrogenase  
450 (LDH: B, D) with SARS-CoV-2 RNA load in paired lower respiratory tract specimens  
451 (tracheal aspirates) and plasma specimens from critically ill patients undergoing  
452 invasive ventilation. Spearman Rho and *P* values are shown.

453 **Figure 6.** Correlation between SARS-CoV-2 RNA load in lower respiratory tract (upper  
454 panel) and plasma (lower panel) and absolute lymphocyte counts in paired specimens.  
455 Spearman Rho and *P* values are shown.

456 **Figure 7.** Kinetics of SARS-CoV-2 RNA load in the lower respiratory tract (tracheal  
457 aspirates) in critically ill patients undergoing invasive ventilation who either died or  
458 survived. *P* values for comparisons are shown.

459 **Supplementary Figure 1.** Evaluation of the limit of detection of the  
460 CLINITEST<sup>®</sup> Rapid COVID-19 Antigen Test (Siemens Healthineers, Erlangen,  
461 Germany) for detection of SARS-CoV-2 N protein in plasma specimens. A pre-  
462 pandemic plasma pool testing negative by RT-PCR was spiked with 10, 25, 50, 100 and  
463 150 pg/ml of a recombinant N protein (MT-25C19NC, Certest Biotec S.L., Zaragoza,  
464 Spain).

465 **Supplementary Figure 2.** Representative example of a depleting experiment  
466 demonstrating the true nature of SARS-CoV-2 N protein detected in plasma specimens

467 with N-antigenemia and testing negative for SARS-CoV-2 RNA by RT-PCR. A rabbit  
468 anti-N protein antibody (40143-R019; SinoBiological) was used for N protein depletion.  
469 An isotype-matched rabbit antibody was employed as a control.

470 **Supplementary Figure 3.** SARS-CoV-2 RNA load in plasma (A) and paired  
471 respiratory tract specimens (tracheal aspirates and nasopharyngeal exudates) (B) in  
472 critically ill patients undergoing invasive ventilation in the presence or absence of  
473 SARS-CoV-2 N protein in paired plasma specimens. *P* values for comparisons are  
474 shown.

475 **Supplementary Figure 4.** SARS-CoV-2 RNA peak load in plasma (upper panel) and  
476 tracheal aspirates (lower panel) in ICU patients who died or survived. *P* values for  
477 comparisons are shown.

478

479

<b>Table 1. Baseline clinical characteristics of the study population at Intensive Care Unit admission</b>	
<b>Variable</b>	<b>no. (%)</b>
<b>Gender</b>	
Male	51 (69.9)
Female	22 (30.1)
<b>Acute physiology and chronic health evaluation (APACHE) II score</b>	
<10	14 (19.2)
10-14	27 (37.0)
15-29	32 (43.8)
<b>Comorbidities</b>	
Diabetes mellitus	18 (24.7)
Asthma/ Chronic lung disease	11 (15.0)
Hypertension	33 (45.2)
Obesity	38 (52.0)
Chronic heart disease	9 (12.3)
Vascular disease	7 (9.6)
Cancer	3 (4.1)
Hematologic disease	3 (4.1)
<b>Number of comorbidity conditions</b>	
One	22 (30.1)
Two or more	33 (45.2)
None	18 (24.7)
<b>Oxygenation and ventilator support</b>	
Invasive mechanical ventilation	64 (87.7)
PiO <sub>2</sub> /FiO <sub>2</sub> <150 mmHg	58 (79.5)
<b>Acute kidney disfunction</b>	17 (23.3)
<b>Antiviral or anti-inflammatory treatment</b>	
Remdesivir	16 (21.9)
Corticosteroids	70 (95.9)
Tocilizumab	27 (36.9)

**Table 2. Qualitative detection of SARS-CoV-2 RNA in the lower respiratory tract or plasma or SARS-CoV-2 N protein in plasma and blood levels of biomarkers of COVID-19 severity.**

Parameter Median (range)	Qualitative result of a given virological parameter	no. of paired specimens	SARS-CoV-2 RNA load in tracheal aspirates	<i>P</i> value	no. of paired specimens	SARS-CoV-2 RNAemia	<i>P</i> value	no. of paired specimens	SARS-CoV-2 N-antigenemia	<i>P</i> value
IL-6 in pg/ml.	Pos	23	111.4 (4-3,548)	0.84	9	111.4 (10.8-1363.)	0.92	14	105.8 (4-3,548)	0.69
	Neg	2	142 (22-262)		40	141.8 (4-3,548)		35	148.6 (4.7-3,437)	
Ferritin in ng/ml.	Pos	82	805.5 (69-6,440)	0.01	31	1,176 (147-6,440)	<0.001	34	971.5 (147-6,440)	0.03
	Neg	34	421.5 (46-2,659)		211	590 (42-5,847)		208	599 (42-5,847)	
D-D in ng/ml.	Pos	101	1,730 (270-29,940)	0.87	36	1,535 (320-9,170)	0.17	41	1,350 (320-18,870)	0.03
	Neg	49	1,790 (270-16,160)		274	1740 (270-60,000)		269	1,760 (270-60,000)	
LDH in UI/l.	Pos	105	687 (93-2,132)	0.001	36	765.5 (329-1,720)	0.002	43	748 (214-1,720)	0.002
	Neg	51	520 (214-1,395)		281	637 (58-2,132)		274	632.5 (58-2,132)	
CRP in mg/l.	Pos	107	35 (1-746)	0.62	36	47.95 (1.2-459)	0.38	42	61.55 (1-459)	0.01
	Neg	54	32.85 (1-606.7)		299	30.7 (1-746)		293	29.9 (1-746)	
Lymphocytes in cell/ $\mu$ l	Pos	74	0.96 (0.02-3.73)	<0.001	26	0.72 (0.02-3.13)	<0.001	27	0.83 (0.02-1.65)	0.001
	Neg	42	1.40 (0.44-2.43)		209	1.13 (0.17-3.73)		208	1.12 (0.17-3.73)	

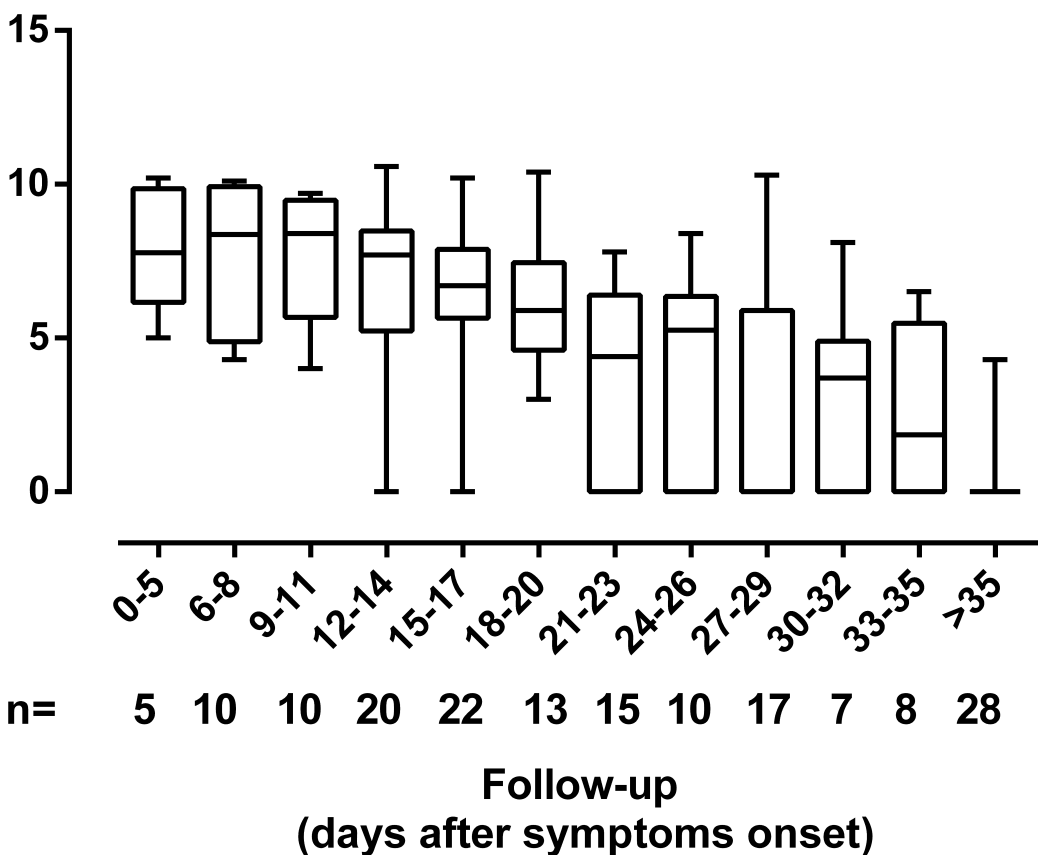
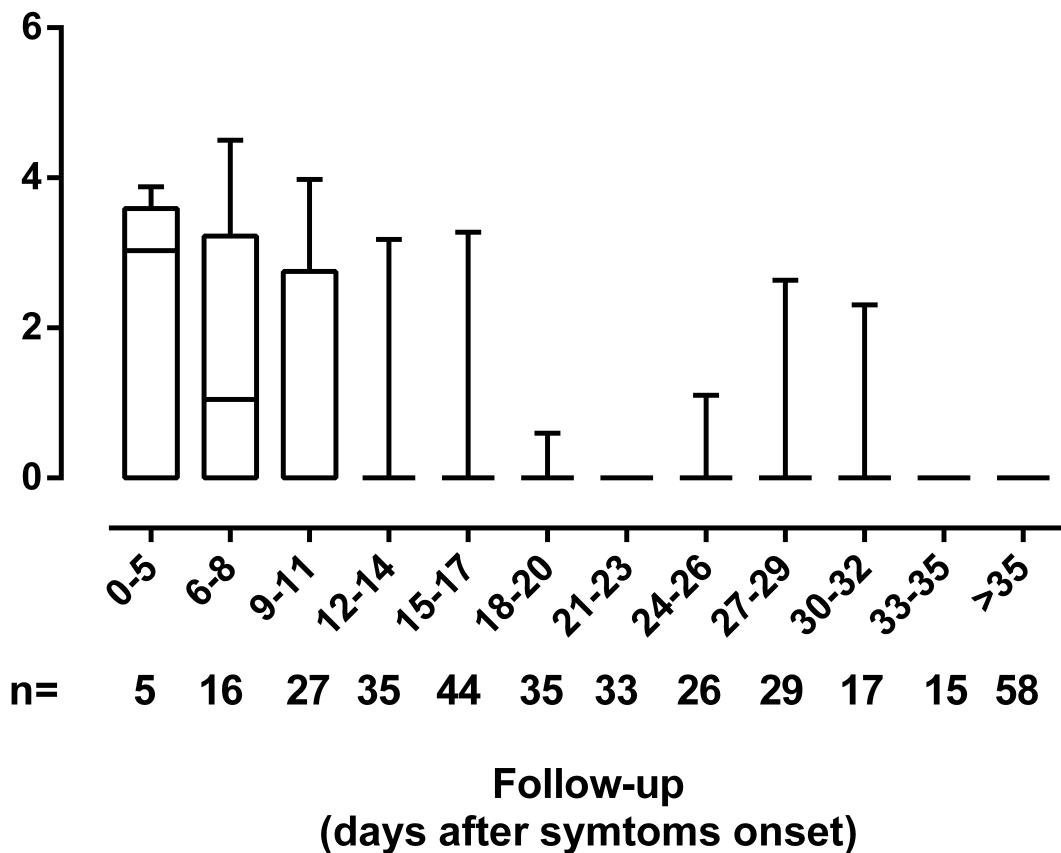
CRP, C-reactive protein; D-D, Dimer-D; IL-6, interleukin-6; LDH, lactose dehydrogenase.

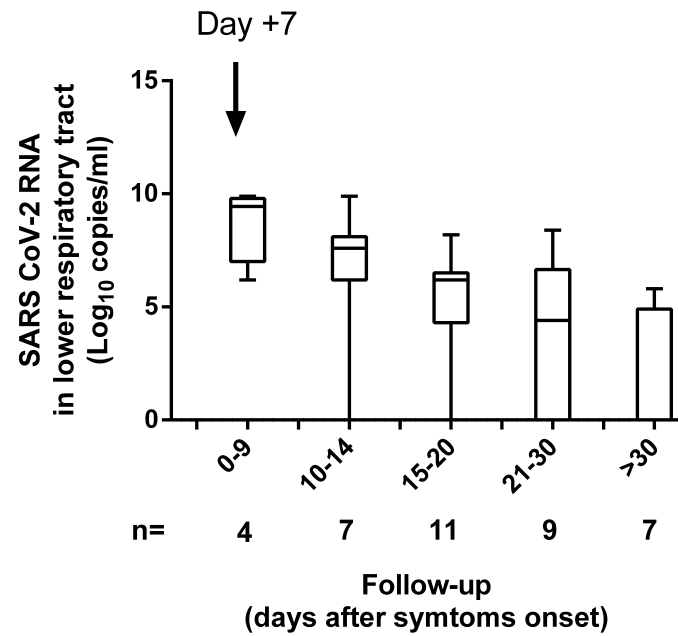
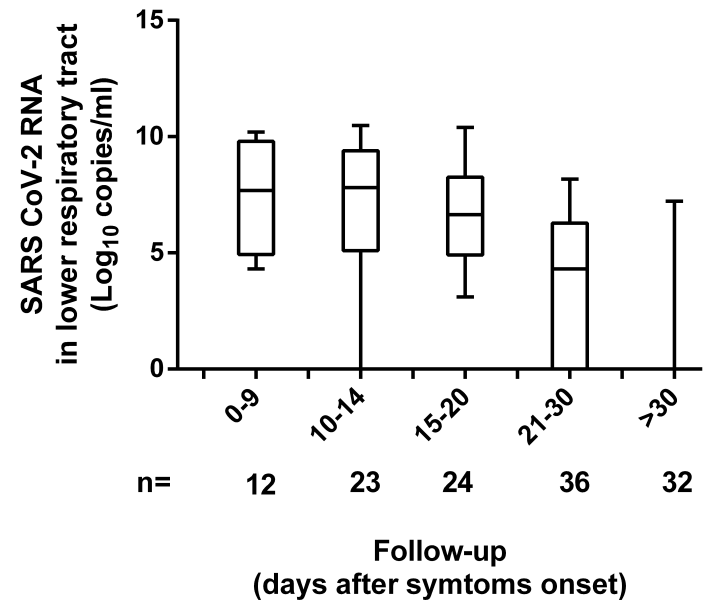
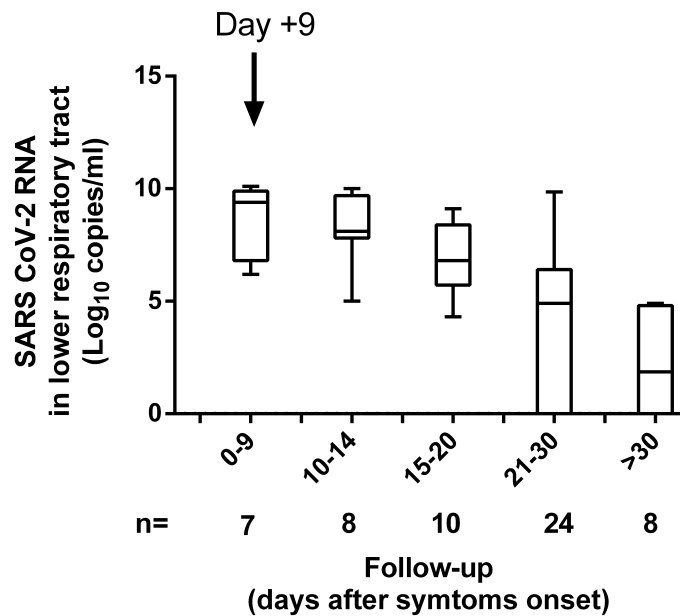
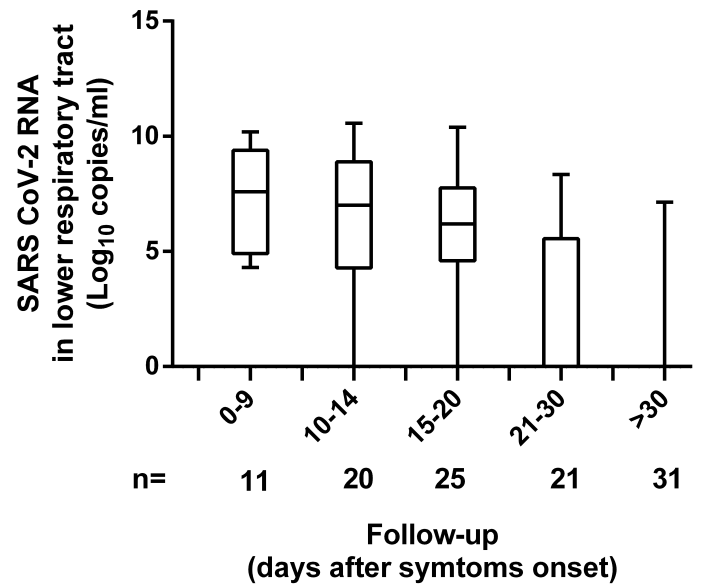
**Table 3. Risk factors for overall mortality among adult COVID-19 patients admitted to the intensive care unit**

Variable	Univariate		Multivariate	
	OR (CI, 95%)	P value	OR (95% CI)	P value
<b>Sex</b>				
Males vs. females	1.63 (0.56-4.66)	0.36	-	
<b>Age</b>				
≥65 vs. < 65 years	1.78 (0.69-4.58)	0.23	-	
<b>Comorbidities (Yes vs. no)</b>				
Obesity	0.78 (0.30-1.99)	0.60	-	
Diabetes mellitus	2.37 (0.80-6.99)	0.11	-	
Hypertension	1.55 (0.60-3.98)	0.36	-	
Asthma/Chronic lung disease	2.03 (0.56-7.42)	0.28		
Chronic heart disease	3.56(0.81-15.6)	0.09	1.79 (0.33-9.68)	0.49
Vascular disease	1.15 (0.24-5.58)	0.85		
<b>Acute Physiology And Chronic Health Evaluation II</b>				
Increase by one unit	1.1 (0.98-1.22)	0.09	1.03 (0.91-1.16)	0.66
<10 (ref)				
10-14	1.72 (0.43-6.91)	0.44		
15-29	1.94 (0.50-7.53)	0.33		
≤15 vs >15	2.17 (0.81-5.82)	0.12		
<b>Organ failure</b>				
Peak serum creatinine levels ≥1.3 vs. <1.3	3.87 (1.23-12.12)	0.02	2.04 (0.54-7.67)	0.29
PiO <sub>2</sub> /FiO <sub>2</sub> <150 vs. ≥150 at admission	0.583 (0.19-1.78)	0.34		
Requirement of vasoactive medication within 24 h after ICU admission	5.93 (2.12-16.6)	0.001	6.34 (2.17-18.5)	0.001
Mechanical ventilation within 48 h of ICU admission	2.34(0.67-8.15)	0.18		
<b>Antiviral or anti-inflammatory treatments</b>				
Tocilizumab (Yes vs. No)	1.36 ( 0.52-3.59)	0.52		
Remdesivir (Yes vs. No)	0.71 (0.21-2.34)	0.57		
<b>Virological parameters</b>				
Increase by two units of SARS-CoV-2 RNA load (log <sub>10</sub> copies/mL)	1.39 (0.78-2.48)	0.26		
Initial SARS-CoV-2 RNA load in tracheal aspirates >7.1 vs. ≤7.1 log <sub>10</sub> copies/ml	0.81 (0.29-2.24)	0.68		
Initial SARS-CoV-2 RNA load in plasma (>3.0 vs. ≤3.0 log <sub>10</sub> copies/ml)	1.68 (0.52-5.43)	0.38		
SARS-CoV-2 RNA peak load in tracheal aspirates (≥7.5 vs. <7.5 log <sub>10</sub> copies/ml)	0.63 (0.22-1.83)	0.39		

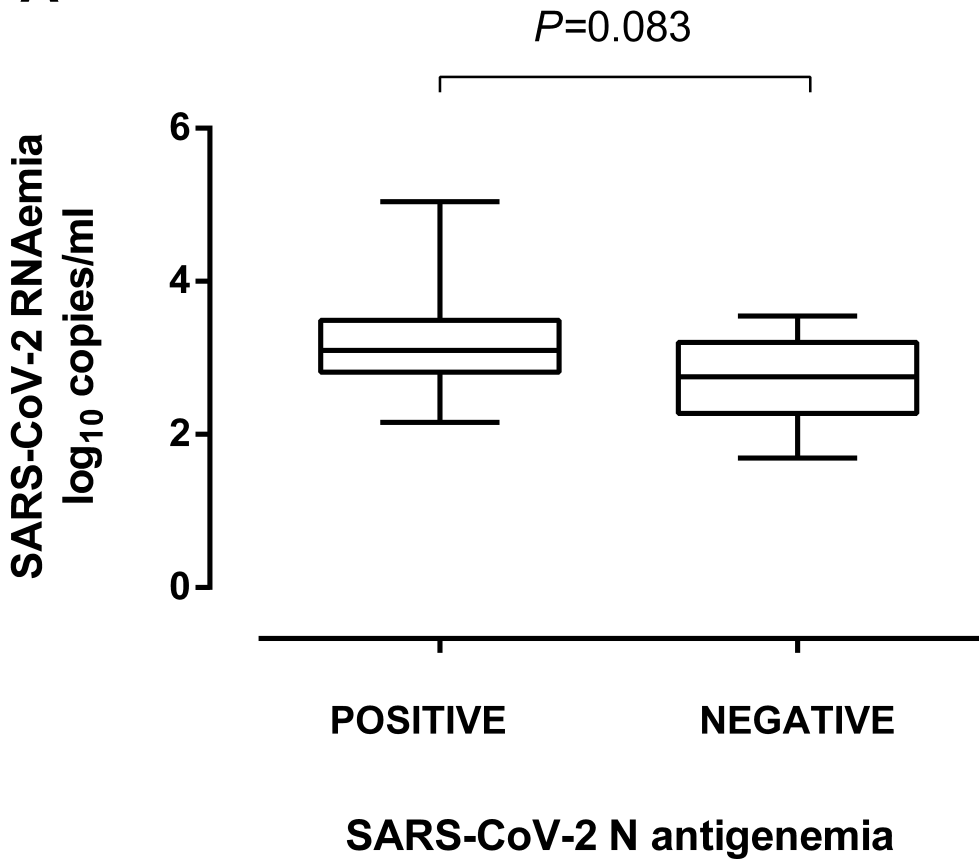
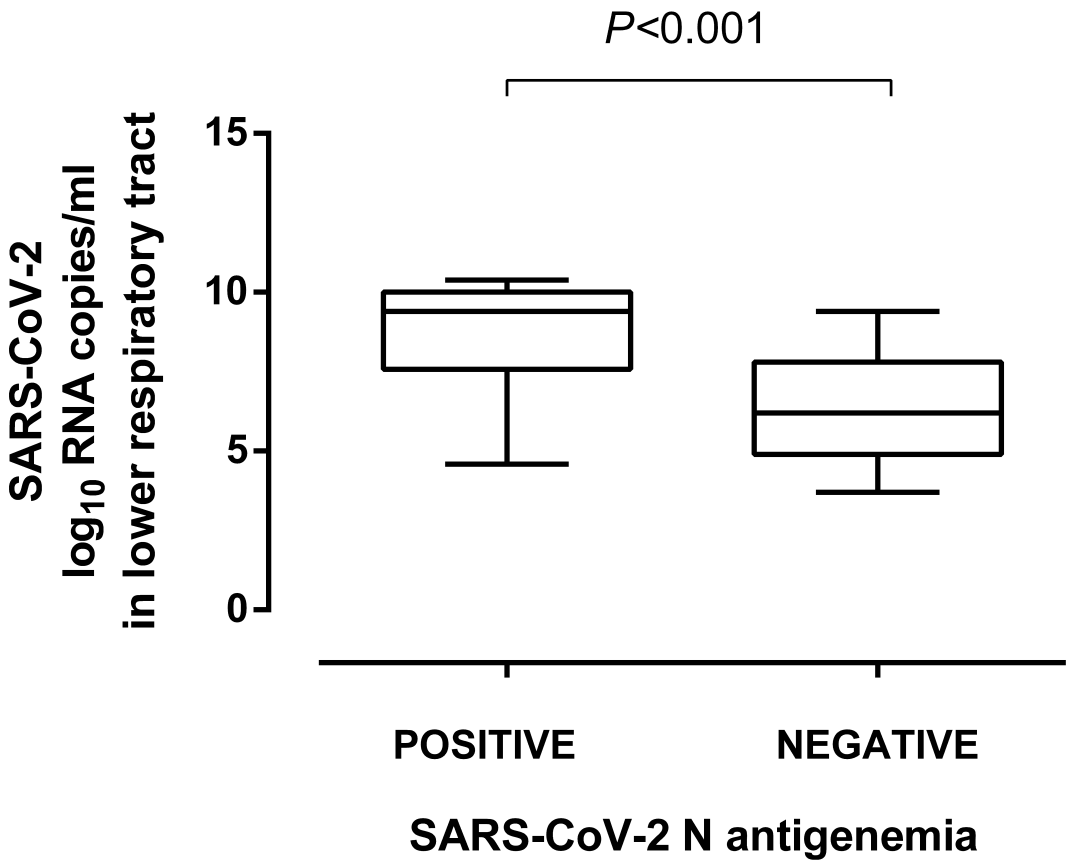


SARS-CoV-2 RNA peak load in plasma (>5.6 vs. ≤5.6 log <sub>10</sub> copies/ml)	0.53 (0.11-2.55)	0.43		
SARS-CoV-2 N-antigenemia (Yes vs. No)	1.29 (0.49-3.34)	0.59		
SARS-CoV-2 RNAemia (Yes vs. No)	2.49 (0.93-6.66)	0.07	2.82 (0.94-8.47)	0.06
ICU, intensive care unit; OR, Odds ratio.				

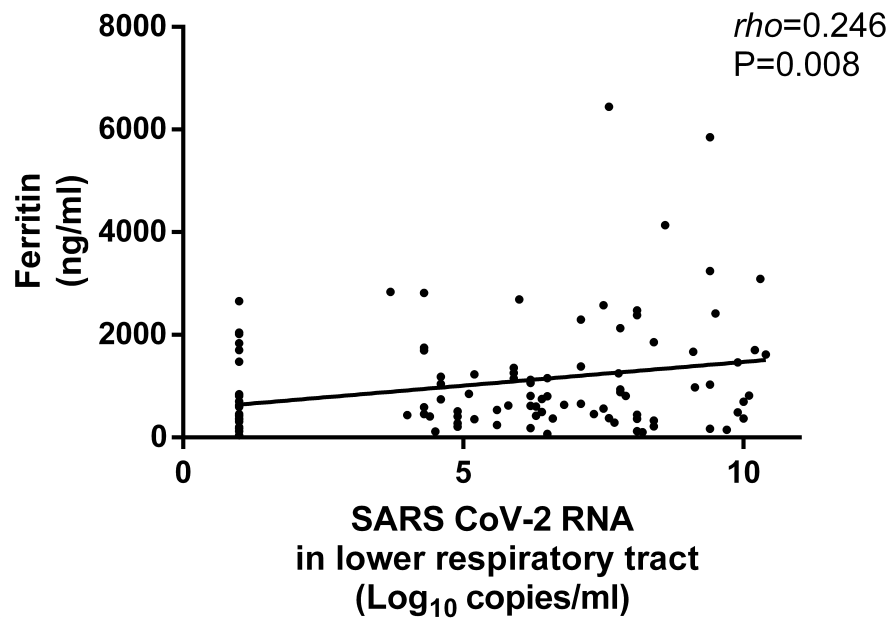
**A****SARS CoV-2 RNA  
in lower respiratory tract  
(Log<sub>10</sub> copies/ml)****B****SARS CoV-2 RNA  
in plasma  
(Log<sub>10</sub> copies/ml)**

**A****B****C****D**

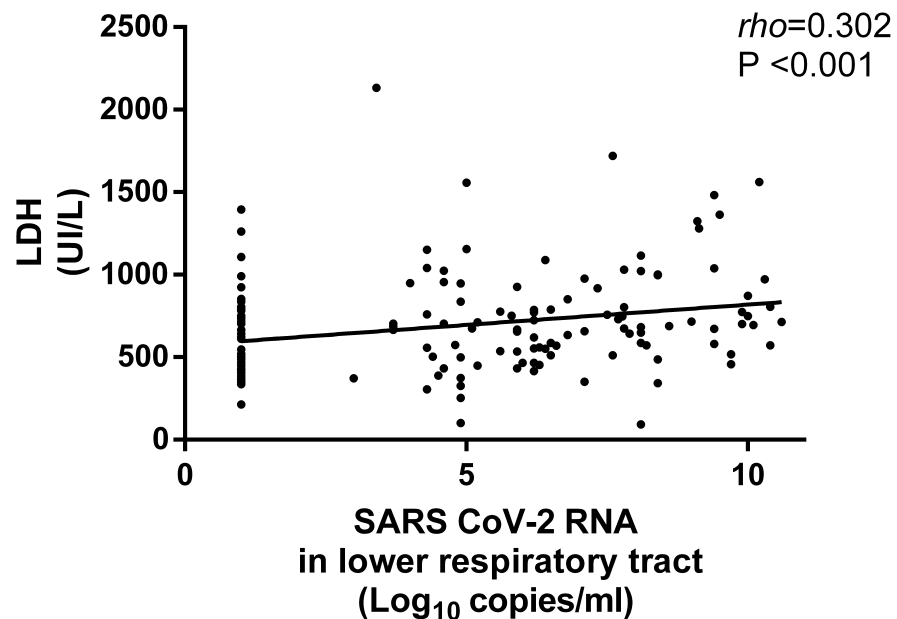


**A****B**

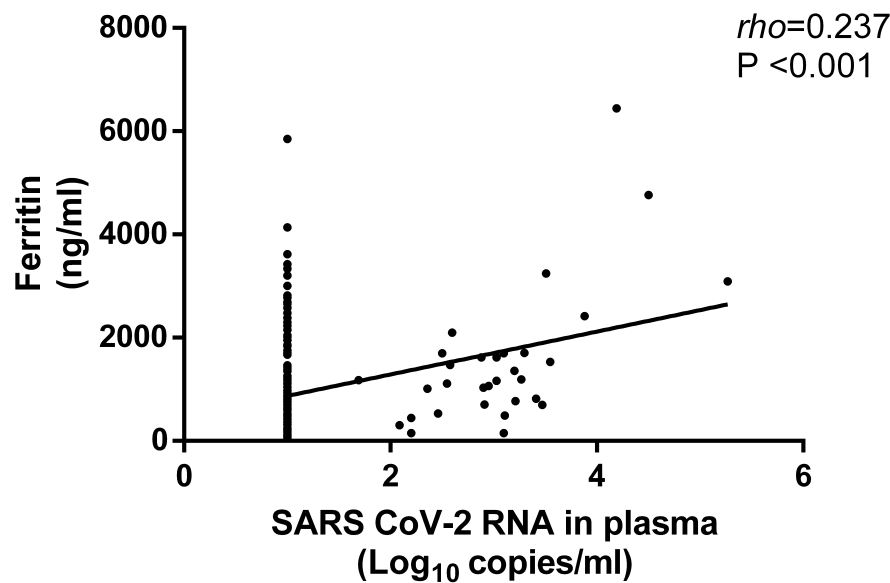
A



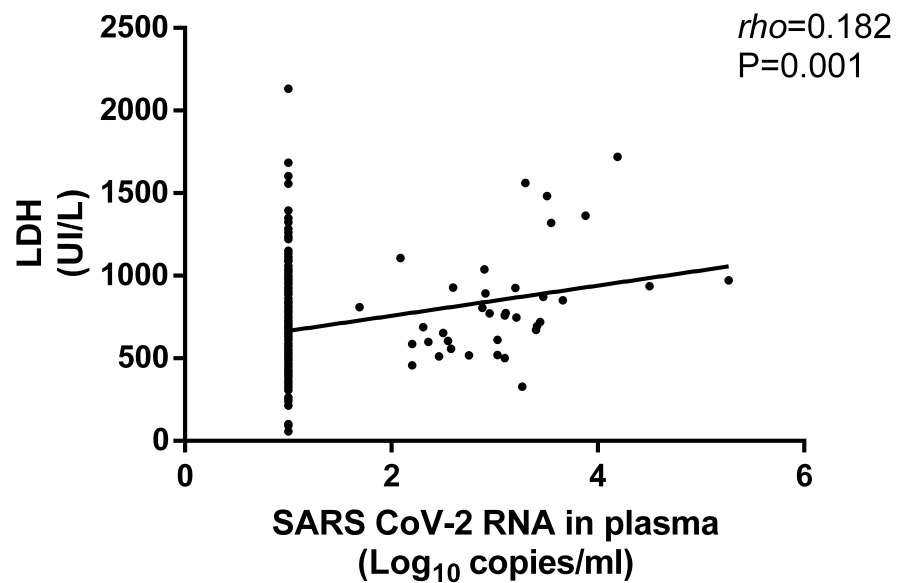
B

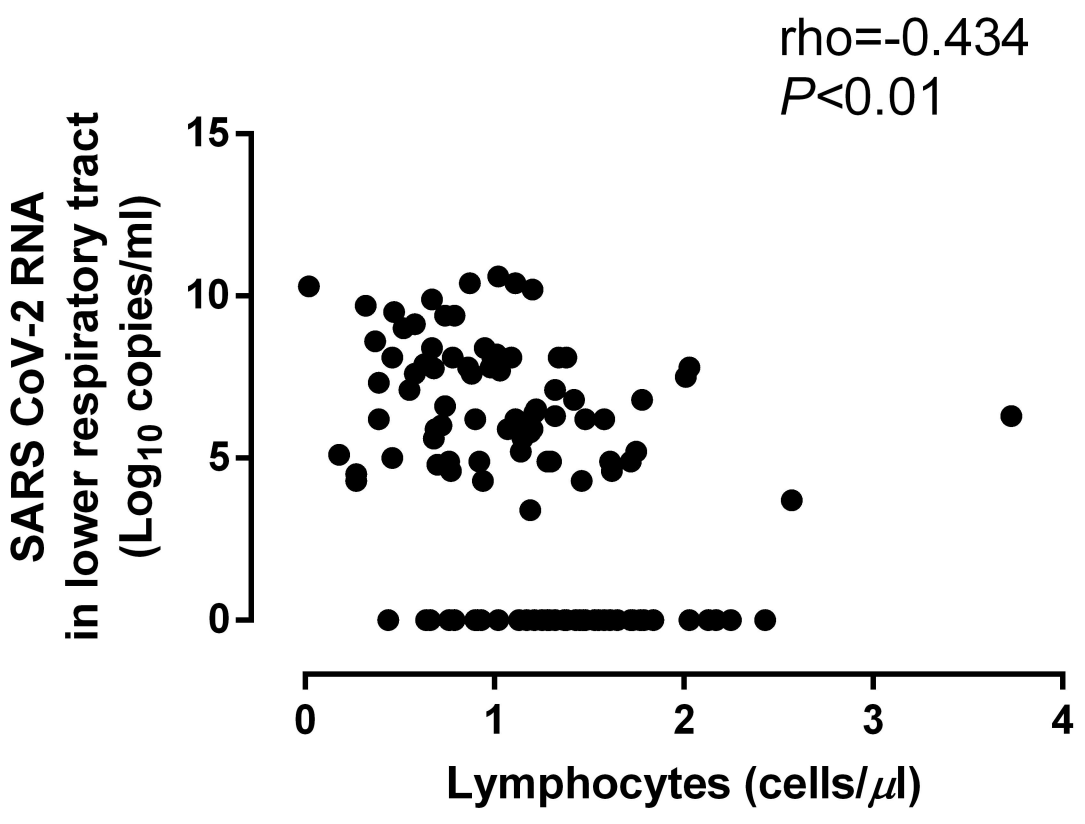
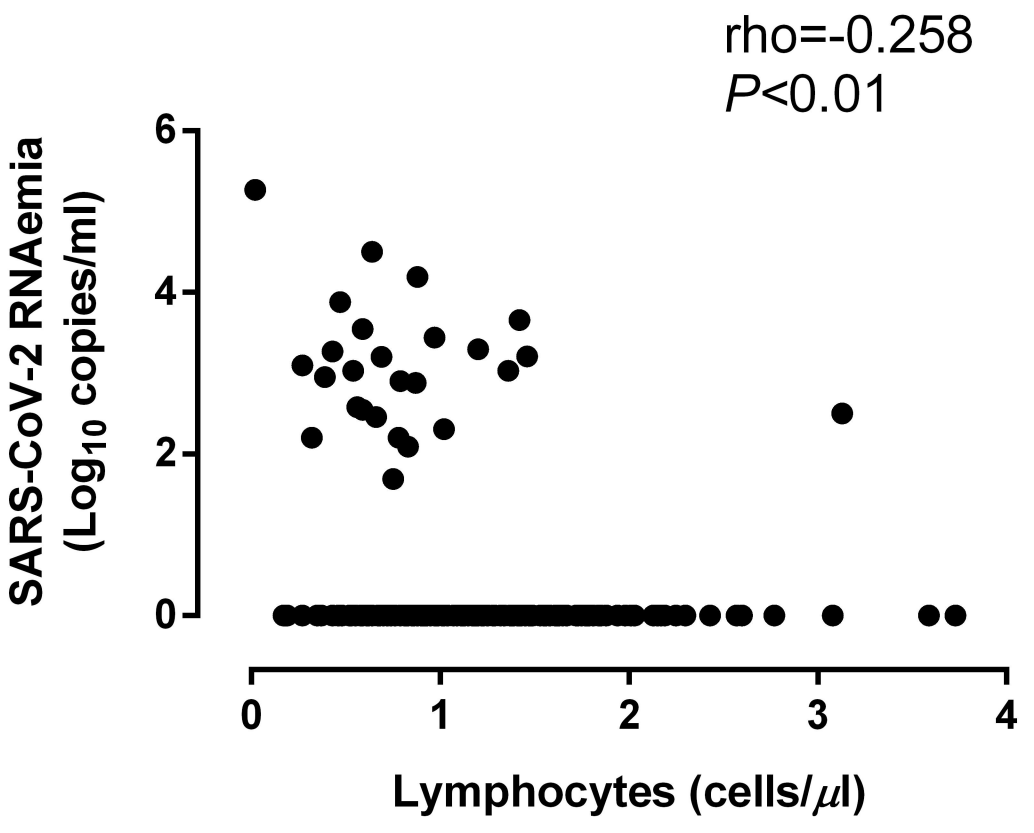


C



D



**A****B**

**SARS CoV-2 RNA  
in lower respiratory tract  
(Log<sub>10</sub> copies/ml)**

