

1  
2  
3  
4  
5  
6  
7  
8  
9  
10  
11  
12  
13  
14  
15  
16  
17  
18  
19  
20  
21  
22

**Real-time PCR assay for detection and differentiation of *Coccidioides immitis* and *Coccidioides posadasii* from culture and clinical specimens**

Sudha Chaturvedi<sup>1,2\*</sup>, Tanya R. Victor<sup>1</sup>, Anuradha Marathe<sup>1</sup>, Ketevan Sidamonidze<sup>1,#</sup>,  
Kelly L. Crucillo<sup>3</sup>, and Vishnu Chaturvedi<sup>1\*</sup>

<sup>1</sup>Mycology laboratory, Wadsworth Center, New York State Department of Health,  
Albany, NY

<sup>2</sup> Department of Biomedical Sciences, University at Albany, Albany, NY

<sup>3</sup>Coccidioidomycosis Serology Laboratory, University of California School of Medicine,  
Department of Medical Microbiology and Immunology, Davis, CA

Species-specific real time PCR for *C. immitis* and *C. posadasii*

\*Corresponding authors Email: [Sudha.Chaturvedi@health.ny.gov](mailto:Sudha.Chaturvedi@health.ny.gov),  
[Vishnu.Chaturvedi@health.ny.gov](mailto:Vishnu.Chaturvedi@health.ny.gov)

1 #Present Address: Lugar Center for Public Health Research, 0184 Tbilisi, Georgia

2

3 **ABSTRACT**

4

5

6 Coccidioidomycosis (Valley Fever) is a pulmonary and systemic fungal disease with  
7 increasing incidence and expanding endemic areas. The differentiation of etiologic  
8 agents *Coccidioides immitis* and *C. posadasii* remains problematic in the clinical  
9 laboratories as conventional PCR and satellite typing schemes are not facile. Therefore,  
10 we developed Cy5- and FAM-labeled TaqMan-probes for duplex real-time PCR assay  
11 for rapid differentiation of *C. immitis* and *C. posadasii* from culture and clinical  
12 specimens. The *RRA2* gene encoding proline-rich antigen 2, specific for *Coccidioides*  
13 genus, was the source for the first set of primers and probe. *Coccidioides immitis* contig  
14 2.2 (GenBank: AAEC02000002.1) was used to design the second set of primers and  
15 probe. The second primers/probe did not amplify the corresponding *C. posadasii* DNA,  
16 because of an 86-bp deletion in the contig. The assay was highly sensitive with limit of  
17 detection of 0.1 pg gDNA/PCR reaction, which was equivalent to approximately ten  
18 genome copies of *C. immitis* or *C. posadasii*. The assay was highly specific with no cross-  
19 reactivity to the wide range of fungal and bacterial pathogens. Retrospective analysis of  
20 fungal isolates and primary specimens submitted from 1995 to 2020 confirmed 129  
21 isolates and three primary specimens as *C. posadasii* and 23 isolates as *C. immitis* from  
22 human coccidioidomycosis cases, while all eight primary samples from two animals  
23 were confirmed as *C. posadasii*. A preliminary analysis of cerebrospinal fluid (CSF) and  
24 pleural fluid samples showed positive correlation between serology tests and real-time

- 1 PCR for two of the 15 samples. The *Coccidioides* spp. duplex real-time PCR will allow
- 2 rapid differentiation of *C. immitis* and *C. posadasii* from clinical specimens and further
- 3 augment the surveillance of coccidioidomycosis.

1 **INTRODUCTION**

2  
3  
4  
5  
6  
7  
8  
9  
10  
11  
12  
13  
14  
15  
16  
17  
18  
19  
20  
21  
22  
23  
24

Coccidioidomycosis (Valley Fever) is a fungal disease caused by two closely related pathogens: *Coccidioides immitis* and *C. posadasii*. *Coccidioides immitis* is endemic to the San Joaquin Valley of California. *Coccidioides posadasii* is found in the desert regions of the southwestern United States, including Arizona, Utah, New Mexico, and West Texas, and parts of Mexico, Argentina, Paraguay, and Central America (1). *Coccidioides immitis* is likely to present outside the recognized endemic area as evident from human infections and DNA-positive soil samples from Washington state (2, 3).

The prevalence of *Coccidioides* infection has increased over the years; in year 2011, more than 20,000 cases were reported in the US, twice as many cases as tuberculosis (4). Further documented increase in the number of cases in California and Arizona were published in the recent updates (5, 6). It is believed that the fungus infects more than 150,000 people per year and many of whom are sick without knowing the cause or have cases so mild that they are not detected (4). The rise in *Coccidioides* infection is attributed to increased travel, relocation to endemic areas, and possible broader distribution of *C. immitis* and *C. posadasii* than previously recognized (7). Arthroconidia produced by these fungi are highly infectious, and climate change, including dry and hot weather followed by dust storms makes these conidia easily air borne to cause pulmonary infection (8). The lung infections typically resolves rapidly leaving the patient with a robust acquired immunity to re-infection (9). However, in some individuals, the disease

1 may progress to a chronic pulmonary condition or to a systemic disease involving the  
2 meninges, bones, joints, subcutaneous, and cutaneous tissues (10). Identifying  
3 *Coccidioides* to the species level is likely beneficial in the proper treatment of the  
4 patients and disease surveillance.

5  
6 *Coccidioides immitis* and *C. posadasii* are not easily differentiated in the clinical  
7 laboratory on account of similar morphology. *Coccidioides posadasii* was first  
8 differentiated from *C. immitis* by microsatellite analysis (11, 12). However, this approach  
9 was time consuming and technically challenging. Subsequently, several real-time PCR  
10 assays, based on LightCycler and TaqMan chemistries, were developed to differentiate  
11 *C. immitis* from *C. posadasii* (13, 14). Both approaches rely on a single nucleotide  
12 polymorphism in different regions of the target gene, and it may have limitations when  
13 large number of strains of *C. immitis* and *C. posadasii* are tested. Umeyama et al (15)  
14 described disparity PCR using species-specific primers designed from the Ci45815 PCR  
15 fragment (GenBank AB597180). Contiguous deletion of 86-bp nucleotides in  
16 corresponding *C. posadasii* contig Cp 45910 PCR fragment (GenBank AB597183) resulted  
17 in convenient distinction of *C. immitis* from *C. posadasii* by conventional PCR. We  
18 describe a TaqMan duplex real time PCR assay using *PRA2* gene encoding proline-rich  
19 antigen specific for the *Coccidioides* genus and *C. immitis* PCR fragment Ci45815 specific  
20 for *C. immitis*. The first set of primers and probe targets the *PRA2* gene specific for  
21 *Coccidioides* genus. The second set of primers and probe targets *C. immitis* contig (CiC)  
22 2.2 (GenBank: AAEC02000002.1). The duplex real-time PCR assay was compared

1 against redesigned diagnostic conventional PCR with 100% concordance for culture  
2 isolates. We show that duplex real-time PCR assay is highly sensitive (10 gene copies)  
3 and identifies *C. immitis* and *C. posadasii* from culture and primary specimens. The  
4 reliable, rapid and sensitive duplex real-time PCR assay will help diagnose and track  
5 coccidioidomycosis, supplementing travel history, and obviating the need for complex  
6 genotyping assays.

7

## 8 **MATERIALS AND METHODS**

9

10 ***Coccidioides* isolates and primary specimens.** One hundred fifty two isolates of  
11 *Coccidioides* species, 10 formalin-fixed paraffin-embedded tissues, three vials of Rhesus  
12 monkey kidney (RhMK) cell (Lot # A491216B) (16), two cerebrospinal fluid (CSF), two  
13 bronchial wash, and one whole blood sample, received as a part of reference service  
14 from 1995- to 2020, from various diagnostic laboratories of the New York State and  
15 neighboring states' laboratories were part of this investigation. Thirteen known isolates  
16 of *C. immitis* and four known isolates of *C. posadasii* were tested when one of us (VC)  
17 implemented this test at the Microbial Diseases Laboratory, California State Department  
18 of Public Health. All cultures were stored as water and glycerol stocks at 30° C and -80°  
19 C, respectively. Fifteen CSF and pleural fluids, which tested positive for  
20 coccidioidomycosis by immunodiffusion and complement fixation at the University of  
21 California Davis, were also included in the study.

22

1 **DNA extraction.** Extraction of DNA from *Coccidioides* spp. was carried out in the  
2 biological safety cabinet-2 (BSC-2) in the biological safety level 3 (BSL 3) laboratory, and  
3 DNA extraction from primary human and animal specimens was carried out in BSC-2  
4 in the BSL 2 laboratory. Qiagen DNA minikit on the Qiacube automated extractor was  
5 used for all DNA extraction. In brief, approximately 5 x 5 mm size of *Coccidioides* fungal  
6 mat grown on SDA slant for 7 to 10 days was removed by sterile loop and suspended in  
7 lysis buffer containing approximately 0.2 g of glass beads and incubated for one h at  
8 90°C. The heat-killed fungal mat was transferred to the BSL2 laboratory and  
9 homogenized in the Precellys homogenizer at 6,500 rpm for 15 •sec each time (program  
10 number 5; 6500-3x60-015). The homogenized suspension was transferred to a 2-ml  
11 screw-cap tube, leaving behind the beads. DNA from homogenized samples was  
12 extracted using the Qiagen DNA mini kit in the QiaCube semiautomated DNA  
13 extractor, resulting in 50 •µl of eluted DNA. For the RhMK cell line, approximately 2 ml  
14 medium containing fungal growth was first centrifuged at 12,000 RPM; the supernatant  
15 was decanted, and fungal pellet was processed for DNA extraction as described above.  
16 DNA from paraffin-embedded tissue was prepared by first sectioning the samples, and  
17 then the paraffin was dissolved with 1 •ml of xylene, followed by two washes using  
18 1 •ml of 100% ethanol. The sample was then dried and extracted using the Qiagen DNA  
19 mini kit as described above with an incubation temperature of 70°C instead of 90°C. For  
20 other primary samples (blood, CSF, bronchial wash, and pleural fluid), approximately  
21 400 µl of each samples was added to DNA extraction buffer containing beads, heated at  
22 56°C for 10 min followed by bead beating and DNA extraction in QiaCube as described

1 above. All extracted DNAs were stored at  $-80^{\circ}\text{C}$ . DNA of fungal species (yeasts and  
2 molds) other than *Coccidioides* spp. were procured from the Wadsworth Center  
3 Mycology Laboratory (WCML) DNA Collection Repository (Supplementary Table 1).  
4 DNA from bacterial species included *Bacillus megaterium*, *Escherichia coli*, *Nocardia*  
5 *farcinica*, *Pseudomonas aeruginosa*, and *Streptococcus pneumonia* was procured from the  
6 Wadsworth Center Bacteriology Laboratory.

7  
8 **Modified conventional PCR.** A modification of conventional diagnostic PCR described  
9 by Umeyama et al (15) was used. The primers were designed from the conserved  
10 region of Ci45815 (GenBank No. AB597180.1) and Cp45810 (GenBank No. AB597183.1)  
11 flanking the deleted region of *C. posadasii*. The nucleotide sequences of the diagnostic  
12 primers were V2119 5'-CCGGGTACTCCGTACATCAC-3', and V2120 5'-  
13 ATGCGTGAAGCCAATTCTTT-3' and the PCR conditions were initial denaturation at  
14  $95^{\circ}\text{C}$  for 1 min followed by 30 cycles consisted of denaturation at  $94^{\circ}\text{C}$  for 1 min,  
15 annealing at  $55^{\circ}\text{C}$  for 1 min, and extension at  $68^{\circ}\text{C}$  for 1 min followed by final extension  
16 at  $68^{\circ}\text{C}$  for 3 min.

17  
18 **Duplex Real-Time PCR Assay.** The *Prp2* gene and contig Ci41815 (15) were used to  
19 design the duplex real-time PCR assay. The nucleotide sequences of primers and probe  
20 for *PRA2* gene target were forward primer V1753 5'-GTGCGAGAAGTTGACCGACTT-  
21 3', reverse primer V1754 5'-AGGCGTGATCTTTCCTGGAA-3', probe V1755 5'-Cy5'-  
22 AAGTGCCACTGCGCCAAGCCC-3BHQ and primers and probe for contig Ci41815



1 target were forward primer V2116 5'-GGTGAAATGCCCGAAAAGAG-3' reverse  
2 primers V2118 5'-CCAATCCTTAGGTAACCGTGAG-3', and probe V2117  
3 5'/56FAMTTGCACTTT/ZEN/CGTTGACTAGCCGC/3IABkFQ/-3'. Reaction for each  
4 real-time PCR contained 1× PerfeCTa multiplex qPCR ToughMix (Quanta Biosciences),  
5 a 1,000•nM concentration of primers and a 250•nM concentration of probes, and 2••l  
6 of genomic DNA (approximately 1 to 10•ng) from isolates or 5 µl of tissue DNA  
7 extracted from primary clinical specimens in a final volume of 20 µl. Each PCR run also  
8 included 2••l (1•ng) of positive extraction control (C735; *C. posadasii*), 2••l (1•ng) of  
9 positive amplification controls (C735, *C. posadasii* and 249, *C. immitis*), and 2••l of  
10 negative extraction (extraction reagents only) and negative amplification (sterilized  
11 nuclease-free water) controls. Parallel to each PCR assay, inhibitory PCR was also  
12 performed by incorporating 1 ng of *Coccidioides* gDNA into each primary clinical DNA  
13 sample. The unidirectional workflow kept the reagent preparation, specimen  
14 preparation, and amplification and detection areas separate to avoid cross-  
15 contamination. Cycling conditions on the ABI 7500 FAST system (Applied Biosystems,  
16 Thermo Fisher Scientific Inc., Waltham, MA) were initial denaturation at 95°C for 20 s,  
17 followed by 45 cycles of 95°C for 3 s and 60°C for 30 s. Based on the limit of detection  
18 (LOD), a cycle threshold ( $C_T$ ) value of •38 was reported as positive; and >38 was  
19 reported as negative. For all primary samples, specimens were reported as inconclusive  
20 if PCR inhibition was observed for the primary specimens.

21

22 **Analytical sensitivity, specificity, and reproducibility of the duplex real-time PCR**

1 **assay:** The 10-fold serial dilutions of genomic DNA from one isolate each of *C. posadasii*  
2 (*C*-735) and *C. immitis* (249) were used to assess the analytical sensitivity of the duplex  
3 real-time PCR assay. The assay specificity was assessed by using an extensive DNA  
4 panel comprising various fungi both closely and distantly related to *Coccidioides* spp.  
5 and few bacterial pathogens primarily responsible for causing pulmonary infection  
6 (Supplementary Table 1). The assay reproducibility was determined by using varying  
7 concentration of gDNA from three isolates each of *C. posadasii* and *C. immitis*, ran on  
8 three different days in duplicate (inter-assay reproducibility), and on the same day in  
9 triplicate (intra-assay reproducibility). The assay's precision was assessed using blinded  
10 panel with varying concentration of gDNA from 20 isolates each of *C. posadassii* and *C.*  
11 *immitis*, and 10 isolates of fungi other than *Coccidioides* spp.

12  
13 **Statistical analysis.** The results were statistically analyzed using GraphPad Prism 8.0  
14 software for macOS. The statistical significance was set at a *P* value of < 0.05. All the Ct  
15 values were averages of at least three repetitions for sensitivity, reproducibility assays  
16 and average of two or three Ct values for duplex real-time PCR assay.

## 17 **RESULTS**

18  
19 **Modified conventional PCR assay:** Initially, we modified conventional diagnostic PCR  
20 assay using species-specific primers designed from the Ci45815 PCR fragment  
21 (GenBank AB597180) described by Umeyama et al (15). The modification reduced the  
22 amplicon length down to 200-bp for *C. immitis* and 114-bp for *C. posadasii*, yielding

1 better electrophoretic separation (Figure 1). Also, PCR efficiency was higher, with a  
2 smaller amplicon size (data not shown). Of 152 isolates investigated, 129 were *C.*  
3 *posadasii*, and 23 were *C. immitis* by conventional PCR. This approach was not successful  
4 for the analysis of *Coccidioides* DNA from primary specimens except for RhMK cell  
5 samples (Table 1). Overall, our results showed that the conventional diagnostic PCR  
6 could be used successfully to identify *C. immitis* and *C. posadasii* from culture isolates  
7 but not from the primary specimens.

8  
9 **Duplex real-time PCR assay sensitivity, specificity, and reproducibility:** We designed  
10 a duplex real-time PCR assay with the first set of primers and probe targeting *PRA2*  
11 gene identifying *Coccidioides* species, and the second set of primers and probe targeting  
12 *C. immitis* contig Ci41815 (CiC) identifying *C. immitis* but not *C. posadasii* due to 86-bp  
13 deletion in the corresponding *C. posadasii* contig Cp41810. The duplex real-time PCR  
14 assay was highly sensitive, with the limit of detection was 0.1 pg gDNA/PCR reaction,  
15 which was equivalent to approximately ten genome copies of *C. immitis* or *C. posadasii*  
16 (Figure 2, and Table 2). None of the other fungal or bacterial DNA yielded any Ct value,  
17 confirming the high specificity of the duplex real-time PCR assay (Supplementary Table  
18 1). The assay was highly reproducible as it yielded correct ID for *C. immitis* and *C.*  
19 *posadasii* when varying concentration of gDNA tested within the same day or on  
20 different days (Supplementary Table 2 A and 2 B), and also when samples were blinded  
21 by one operator and tested by another operator (Supplementary Table 3). Since  
22 *Coccidioides* genus comprises only two species, positive results with both probes

1 identified *C. immitis* while the positive, negative results with *PRA2* and *Ci41815* probes,  
2 respectively, identified *C. posadasii* (Table 3).

3  
4 **Performance of the duplex real-time PCR assay:** The duplex real-time PCR assay  
5 correctly identified all cultures of *Coccidioides* species to either *C. immitis* or *C. posadasii*,  
6 and the results were corroborated with modified diagnostic PCR assay, confirming the  
7 high utility of the duplex real-time PCR assay. Of 152 human isolates of *Coccidioides*  
8 received for reference testing, 129 were identified as *C. posadasii*, and 23 were identified  
9 as *C. immitis* (Fig. 3). Of 17 isolates received from California, 13 were confirmed as *C.*  
10 *immitis* and four were confirmed as *C. posadasii* (Table 4). Next, we assessed the duplex  
11 real-time PCR assay's ability to detect *Coccidioides* species DNA from 17 primary  
12 specimens. Nine of ten paraffin-embedded tissues and three vials of RhMK cells were  
13 positive for *C. posadassi* DNA, while all other samples were negative for *Coccidioides*  
14 DNA. The clinical samples negative for *Coccidioides* DNA were also negative for any  
15 other fungal DNA by internal transcribed spacer (ITS) PCR and for fungal pathogens by  
16 culture (Table 1). All of the three RhMK cell vials positive for *C. posadasii* DNA also  
17 yielded *Coccidioides* in culture, and subsequently confirmed as *C. posadasii* (Table 1). We  
18 also evaluated 15 archived CSF and pleural fluid samples, which were earlier tested  
19 positive for coccidioidomycosis by immunodiffusion and complement fixations tests. Of  
20 these samples, only two were positive for *C. posadasii* DNA by duplex real-time PCR  
21 assay (Table 5).

22  
23 **DISCUSSION**

1  
2 PCR-based methods have been used increasingly due to their accuracy,  
3 sensitivity, and speed of identification, and the use of DNA instead of highly infectious  
4 live cultures. Microsatellite analysis has been the primary molecular method used to  
5 distinguish the two species of *Coccidioides* (11, 12). However, this method is both time  
6 consuming and technically challenging for clinical and reference laboratories. The light-  
7 cycler PCR assay developed by Binnicker et al. (17) was highly sensitive and specific for  
8 *Coccidioides* species, but this assay could not distinguish *C. immitis* from *C. posadasii*.  
9 Umeyama et al. (15) described disparity PCR using species-specific primers that  
10 resulted in different size amplicons for a convenient distinction of *C. immitis* from *C.*  
11 *posadasii* by conventional PCR. In the present study, we modified the Umeyama et. al.  
12 (15) disparity PCR, which led to the reduction in amplicon size of 200-bp for *C. immitis*  
13 and 114-bp for *C. posadasii*. The conventional diagnostic PCR assay was excellent for the  
14 identification of *C. immitis* and *C. posadasii* from culture, but it was not good for the  
15 analysis of *Coccidioides* DNA from paraffin-embedded primary specimens. One reason  
16 could be that the amount of *Coccidioides* DNA present in these samples were below the  
17 threshold for detection by conventional PCR, or the template was degraded beyond the  
18 capacity of the conventional PCR to yield a positive result. PCR allelic-discrimination  
19 assay, referred to as CocciDiff, was developed using TaqMan chemistry (14). This assay  
20 could effectively identify *Coccidioides* cultures and could accurately distinguish *C.*  
21 *immitis* from *C. posadasii* based upon the presence of an individual highly informative  
22 canonical SNP (14). CocciDiff has yet to be validated with clinical specimens. Although,

1 the CoccidiDiff assay appears to be quite promising, the assay specificity based on  
2 canonical SNP can be problematic if such mutations are not consistently present in a  
3 given strain of *Coccidioides*. In the present study, while developing a duplex real-time  
4 PCR assay, we used more stringent conditions where first set of primers and probe  
5 targeting *PRA2* gene identified *Coccidioides* to the genus level, and the second set of  
6 primers and probe targeting *C. immitis* contig, Ci41815 (CiC), identified *C. immitis* but  
7 not *C. posadasii* due to a deletion of 86-bp sequence in the corresponding Cp41810  
8 contig. Since there are only two species within the *Coccidioides* genus, the positive  
9 results with both probes of the duplex assay allowed the identification of *C. immitis*  
10 while positive, negative results with probes *PRA2* and Ci41815, respectively, led to the  
11 identification of *C. posadasii*.

12  
13 Of 129 *C. posadasii*, 117 isolates were from patients from New York, followed by  
14 eight isolates from patients from New Jersey, two isolates each from patients from  
15 Pennsylvania and Arizona, one isolate from a patient from Washington DC. All 23 *C.*  
16 *immitis* isolates were from patients from NY. Since *Coccidioides* is not found in the soil of  
17 New York and other states in the northeast region, the positive isolates suggested that  
18 the patients acquired *Coccidioides* infection while travelling to the area of endemicity.  
19 These findings are consistent with our earlier study where travel history to endemic  
20 areas for *Coccidioides* was linked to positive clinical cases from New York (18). In the  
21 present study, we confirmed five-fold more isolates as *C. posadasii* than as *C. immitis*;  
22 this observation supports a previous publication on possible larger population size and

1 more diverse distribution of *C. posadasii* vis-a-vis *C. immitis* (19). Among a smaller  
2 sampling of isolates from California, we found four *C. posadasii* isolates. Also, positive  
3 RhMK cell samples came from a monkey housed in California were also identified as *C.*  
4 *posadasii*. These results raised the possibility that a small niche of *C. posadasii* exists in  
5 California or patients might have traveled to areas where *C. posadasii* is endemic.  
6 Further studies are needed to delineate the geographic distribution of *C. immitis* and *C.*  
7 *posadasii* and the areas of overlap if any.

8  
9 Serology tests are the mainstay of coccidioidomycosis diagnosis (20, 21). Our  
10 study included a small sample size of serology-positive clinical specimens, but the  
11 findings do not permit firm correlation with real-time PCR test. The gold standard for  
12 the diagnosis of coccidioidomycosis is the culture of the organism from primary  
13 specimens. Culture is highly sensitive, and the DNA probe for confirmatory testing of  
14 culture isolates has yielded excellent specificity (22, 23). However, growth in culture  
15 may take several days to weeks resulting in a delay in diagnosing and initiating  
16 treatment in infected individuals. The highly infectious nature of arthrospores  
17 produced by *Coccidioides* species presents a safety risk to the laboratory personnel if a  
18 culture is not quickly identified and handled appropriately under biosafety level 3  
19 containment. It is important to note that laboratory-acquired infections due to  
20 *Coccidioides* species have been reported in the literature (24). In summary, our modified  
21 diagnostic conventional PCR assay was excellent for the culture identification of *C.*  
22 *immitis* and *C. posadasii*, and the new duplex real time PCR assay had broader utility for

1 identifying two *Coccidioides* species from culture and primary specimens. The  
2 *Coccidioides* spp. duplex real-time PCR will allow rapid differentiation of *C. immitis* and  
3 *C. posadasii* from clinical specimens and further augment coccidioidomycosis  
4 surveillance.

5  
6  
7  
8

## 9 ACKNOWLEDGEMENTS

10

11 We acknowledge the Wadsworth Center (WC) Tissue Culture & Media, and the  
12 Applied Genomic Technologies Cores for media and sequencing services. Dr. Wallace,  
13 Milwaukee Zoo, thanked for providing Rhino tissues suspected of coccidioidomycosis.  
14 Dr. Kimberlee McClive-Reed provided editorial comments on the draft manuscript. We  
15 thank YanChun Zhu for assistance with the reference testing of *Coccidioides* spp. VC  
16 thanks Dr. Edward Desmond and other staff members at the California Department of  
17 Public Health for assistance with implementation of *Coccidioides* real-time PCR test. This  
18 work was supported partly by funds from the WC, the New York State Department of  
19 Health (NYSDOH), and the Centers for the Disease Control and Prevention (CDC)  
20 grant number NU50CK000516. The contents of this manuscript are solely the  
21 responsibility of the authors and do not necessarily represent the official views of the  
22 NYSDOH or the CDC.



1

## 2 **AUTHOR CONTRIBUTIONS**

3

4 SC conceived the study, designed primers and probes for duplex and conventional PCR

5 assays, supervised experiments, and wrote the manuscript. TV, AM, and KS

6 standardized, validated single-plex, duplex real-time, and conventional PCR assays.

7 KLC contributed to the clinical specimen selection, helped in data interpretation, and

8 approved final draft. VC contributed to the study design, procured *Coccidioides* isolates

9 and primary specimens from other agencies and edited the draft manuscript.

10

11

## 12 **FIGURE LEGEND**

13

14

15 **Fig. 1. A modified conventional diagnostic PCR assay.** A modification of assay

16 described by Umeyama et al. (2006) allowed generation of smaller amplicons while

17 maintaining test accuracy. Lane 1, and 10; 100-bp DNA ladder; lane 2 non-template

18 control (NTC), lanes 3, 5, 7, and 9 *C. posadasii*; lanes 4, 6, 8 *C. immitis*. The identity of the

19 isolates was also confirmed by Sanger sequencing.

20

21 **Fig. 2. *Coccidioides* spp. duplex real-time PCR assay sensitivity.** Genomic DNA from

22 two control strains of *Coccidioides species*, *C. immitis* (249) and *C. posadasii* (C-735) were

23 serially diluted and tested in duplicate in duplex real-time PCR assay. The assay was

24 linear over 6 orders of magnitude and the limit of detection was 0.001 ng or 1 picogram

1 gDNA/PCR reactions at 45 PCR cycles confirming high sensitivity. As indicated, the  
2 assay targeting *CiC* gene did not yield Ct values against *C. posadasii* DNA. The test was  
3 repeated with similar results.

4  
5 **Fig. 3. Human coccidioidomycosis cases from 1995 to 2020.** Isolates received from  
6 various facilities from New York and neighboring states were analyzed retrospectively  
7 by newly developed duplex real-time PCR assay. Of 152 cases, 129 were confirmed as  
8 being caused by *C. posadasii*, and 23 were caused by *C. immitis*. The predominance of *C.*  
9 *posadasii* over *C. immitis* observed in the isolates analyzed.

10

11

1 **REFERENCES**

- 2
- 3 1. Galgiani JN, Ampel NM, Blair JE, Catanzaro A, Johnson RH, Stevens DA, Williams PL.  
4 2005. Coccidioidomycosis. Clin Infect Dis 41:1217-1223.
- 5 2. Marsden-Haug N, Goldoft M, Ralston C, Limaye AP, Chua J, Hill H, Jecha L, Thompson  
6 GR, 3rd, Chiller T. 2013. Coccidioidomycosis acquired in Washington State. Clin Infect  
7 Dis 56:847-50.
- 8 3. CDC. 2014. Notes from the Field: *Coccidioides immitis* Identified in Soil Outside of Its  
9 Known Range — Washington. MMWR 23:450.
- 10 4. CDC. 2013. Increase in Reported Coccidioidomycosis — United States, 1998–2011.  
11 Morbidity and Mortality Weekly Report 62:217-221.
- 12 5. Cooksey GS, Nguyen A, Knutson K, Tabnak F, Benedict K, McCotter O, Jain S, Vugia  
13 D. 2017. Notes from the Field: Increase in Coccidioidomycosis - California, 2016.  
14 MMWR Morb Mortal Wkly Rep 66:833-834.
- 15 6. Bezold CP, Khan MA, Adame G, Brady S, Sunenshine R, Komatsu K. 2018. Notes from  
16 the Field: Increase in Coccidioidomycosis - Arizona, October 2017-March 2018. MMWR  
17 Morb Mortal Wkly Rep 67:1246-1247.
- 18 7. Kirkland TN, Fierer J. 2018. *Coccidioides immitis* and *posadasii*; A review of their  
19 biology, genomics, pathogenesis, and host immunity. Virulence 9:1426-1435.
- 20 8. Tong DQ, Wang JXL, Gill TE, Lei H, Wang B. 2017. Intensified dust storm activity and  
21 Valley fever infection in the southwestern United States. Geophysical research letters  
22 44:4304-4312.

- 1 9. Malo J, Luraschi-Monjagatta C, Wolk DM, Thompson R, Hage CA, Knox KS. 2014.  
2 Update on the Diagnosis of Pulmonary Coccidioidomycosis. *Annals of the American*  
3 *Thoracic Society* 11:243-253.
- 4 10. Laniado-Laborín R, Alcantar-Schramm JM, Cazares-Adame R. 2012.  
5 Coccidioidomycosis: An Update. *Current Fungal Infection Reports* 6:113-120.
- 6 11. Fisher MC, Koenig GL, White TJ, Taylor JW. 2002. Molecular and phenotype  
7 description of *Coccidioides posadasii* sp. nov., previously recognized as the non-  
8 Californian population of *Coccidioides immitis*. *Mycologia* 94.
- 9 12. Jewell K, Cheshier R, Cage GD. 2008. Genetic diversity among clinical *Coccidioides*  
10 spp. isolates in Arizona. *Medical Mycology* 46:449-455.
- 11 13. Bialek R, Kern J, Herrmann T, Tijerina R, Cecenas L, Reischl U, Gonzalez GM. 2004.  
12 PCR assays for identification of *Coccidioides posadasii* based on the nucleotide sequence  
13 of the antigen 2/proline-rich antigen. *J Clin Microbiol* 42:778-783.
- 14 14. Sheff KW, York ER, E.M. D, Barker BM, Rounsley SD, Waddell WD, Bectrom-  
15 Sternberg SM, Bectrom-Sternberg JS, K.P. K, Engelthaler DM. 2010. Development of a  
16 rapid, cost-effective TaqMan Real-Time PCR Assay for identification and differentiation  
17 of *Coccidioides immitis* and *Coccidioides posadasii*. *Medical Mycology* 48:466-469.
- 18 15. Umeyama T, Sano A, Kamei K, Niimi M, Nishimura K, Uehara Y. 2006. Novel  
19 Approach to Designing Primers for Identification and Distinction of the Human  
20 Pathogenic Fungi *Coccidioides immitis* and *Coccidioides posadasii* by PCR  
21 Amplification. *Journal of Clinical Microbiology* 44:1859-1862.
- 22 16. Ginocchio CC, Lotlikar M, Li X, Elsayed HH, Teng Y, Dougherty P, Kuhles DJ,  
23 Chaturvedi S, St. George K. 2013. Identification of Endogenous *Coccidioides posadasii*

- 1 Contamination of Commercial Primary Rhesus Monkey Kidney Cells. J Clin Microbiol  
2 51:1288-1290.
- 3 17. Binnicker MJ, Buckwalter SP, Eisberner JJ, Stewart RA, McCullough AE, Wohlfiel SL,  
4 Wengenack NL. 2007. Detection of *Coccidioides* species in clinical specimens by real-  
5 time PCR. J Clin Microbiol 45:173-178.
- 6 18. Chaturvedi V, Ramani R, Gromadzki S, Rodeghier B, Chang H, Morse DL. 2000.  
7 Coccidioidomycosis in New York State. . Emerging Infectious Diseases 6(1):25-29.
- 8 19. Teixeira MM, Barker BM. 2016. Use of Population Genetics to Assess the Ecology,  
9 Evolution, and Population Structure of *Coccidioides*. Emerg Infect Dis 22:1022-30.
- 10 20. Pappagianis D, Zimmer BL. 1990. Serology of coccidioidomycosis. Clin Microbiol Rev  
11 3:247-68.
- 12 21. McHardy IH, Dinh BN, Waldman S, Stewart E, Bays D, Pappagianis D, Thompson GR,  
13 3rd. 2018. Coccidioidomycosis Complement Fixation Titer Trends in the Age of  
14 Antifungals. J Clin Microbiol 56.
- 15 22. Padhye AA, Smith G, Standard PG, McLaughlin D, Kaufman L. 1994. Comparative  
16 evaluation of chemiluminescent DNA probe assays and exoantigen tests for rapid  
17 identification of *Blastomyces dermatitidis* and *Coccidioides immitis*. J Clin Microbiol  
18 32:867-870.
- 19 23. Stockman L, Clark KA, Hunt JM, Roberts GD. 1993. Evaluation of commercially  
20 available acridinium ester-labeled chemiluminescent DNA probes for culture  
21 identification of *Blastomyces dermatitidis*, *Coccidioides immitis*, *Cryptococcus*  
22 *neoformans*, and *Histoplasma capsulatum*. J Clin Microbiol 31:845-850.

- 1 24. Stevens DA, Clemons KV, L. HB, Pappagianis D, Baron EJ, Hamilton JR, Deresinski
- 2 SC, Johnson N. 2009. Expert Opinion: What To Do When There Is *Coccidioides*
- 3 Exposure in a Laboratory. *Clinical Infectious Diseases* 49:919-923.
- 4

1  
2  
3 Table 1. Detection of *Coccidioides* species DNA from primary human and animal specimens  
4

Sample type	Source	Culture	Histopathology	Diagnostic PCR (bp)	Duplex Real-Time PCR		Final ID
					Mean Ct (Cy5)	Mean Ct (FAM)	
Whole blood	Human (case 1)	Negative	NA	Negative	0	0	Final ID
Tongue tissue (PB)	Human (case 2)	NA	Positive	Negative	0	0	Negative
Tongue tissue (PB)	Human (case 2)	NA	Positive	Negative	31.86	0	<i>C. posadasii</i>
Lung tissue (PB)	Human (case 3)	NA	NA	Negative	34.45	0	<i>C. posadasii</i>
Tissue (PB)	Human (case 4)	NA	NA	Negative	37.58	0	<i>C. posadasii</i>
Tissue (PB)	Human (case 5)	NA	NA	Negative	31.84	0	<i>C. posadasii</i>
Cerebrospinal fluid	Human (case 6)	Negative	NA	Negative	0	0	Negative
Cerebrospinal fluid	Human (case 7)	Negative	NA	Negative	0	0	Negative
Bronchial wash	Human (case 8)	Negative	NA	Negative	0	0	Negative
Trachobronchial lymph node (PB)	Rhino (case 1)	NA	Positive	Negative	32.44	0	<i>C. posadasii</i>
Left lung (PB)	Rhino (case 1)	NA	Positive	Negative	35.72	0	<i>C. posadasii</i>
Left liliac lymph node (PB)	Rhino (case 1)	NA	Positive	Negative	36.86	0	<i>C. posadasii</i>
Left Supramammary lymph node (PB)	Rhino (case 1)	NA	Positive	Negative	34.82	0	<i>C. posadasii</i>
Synoviam (PB)	Rhino (case 1)	NA	Positive	Negative	34.42	0	<i>C. posadasii</i>
RhMK cell vial 1	Monkey (case 1)	Positive	NA	114	18.56	0	<i>C. posadasii</i>
RhMK cell vial 2	Monkey (case 1)	Positive	NA	114	19.35	0	<i>C. posadasii</i>
RhMK cell vial 3	Monkey (case 1)	Positive	NA	114	22.15	0	<i>C. posadasii</i>

5 NA = Not available; PB = Paraffin block

6  
7  
8

1  
2  
3  
4  
5

gDNA dilutions ng/PCR reaction	Probe	<i>C. posadasii</i>			<i>C. immitis</i>		
		Ct 1	Ct 2	Mean Ct	Ct 1	Ct 2	Mean Ct
100	<b><i>PRA2 (Cy5)</i></b>	18.66	18.86	18.76	19.04	19.14	19.09
10		22.36	22.28	22.32	23.16	23.58	23.16
1		26.34	25.96	26.15	27.00	27.17	26.88
0.1		29.80	30.05	29.92	30.83	30.75	30.63
0.01		33.21	33.47	33.34	33.97	33.69	34.12
0.001		36.38	35.25	35.81	37.37	36.65	37.01
0.0001		0.0	0.0	0.0	0.0	0.0	0.0
100	<b><i>CiC (FAM)</i></b>	0.0	0.0	0.0	19.40	19.47	19.43
10		0.0	0.0	0.0	23.58	23.50	23.54
1		0.0	0.0	0.0	27.17	27.40	27.28
0.1		0.0	0.0	0.0	30.75	31.40	31.07
0.01		0.0	0.0	0.0	33.69	34.78	34.23
0.001		0.0	0.0	0.0	37.83	37.50	37.66
0.0001		0.0	0.0	0.0	0.0	0.0	0.0

6  
7  
8  
9  
10  
11  
12

Table 2. Duplex real-time PCR Assay Sensitivity



1

2 Table 3. Test interpretation of real-time PCR assay for *Coccidioides* species

3

Test Interpretation	Probe	
	<i>Prp2</i> (Cy5)	<i>CiC</i> (FAM)
<i>Coccidioides immitis</i>	Positive	Positive
<i>Coccidioides posadasii</i>	Positive	Negative
Other Fungi	Negative	Negative
Bacteria	Negative	Negative

4

5

6

7

1

2 Table 4. Results of real-time PCR testing of *Coccidioides* spp. isolates from California

3

No.	Initial identification	Conventional PCR (size in bp)	Duplex Real-Time PCR		Final Interpretation
			Mean Ct (Cy5)	Mean Ct (FAM)	
497-97	<i>C. immitis</i>	200	24.33	31.09	<i>C. immitis</i>
498-97	<i>C. immitis</i>	114	20.19	0	<i>C. posadassii</i> <sup>#</sup>
662-98	<i>C. immitis</i>	200	23.02	22.25	<i>C. immitis</i>
664-98	<i>C. immitis</i>	200	32.24	32.61	<i>C. immitis</i>
665-98	<i>C. immitis</i>	114	24.74	0	<i>C. posadassii</i> <sup>#</sup>
666-98	<i>C. immitis</i>	114	18.76	0	<i>C. posadassii</i> <sup>#</sup>
667-98	<i>C. immitis</i>	200	29.8	28.66	<i>C. immitis</i>
669-98	<i>C. immitis</i>	114	27	0	<i>C. posadassii</i> <sup>#</sup>
243-09	<i>C. immitis</i>	200	18.56	19.98	<i>C. immitis</i>
244-09	<i>C. immitis</i>	200	28.59	30.18	<i>C. immitis</i>
245-09	<i>C. immitis</i>	200	26.2	27.6	<i>C. immitis</i>
246-09	<i>C. immitis</i>	200	21.81	20.87	<i>C. immitis</i>
247-09	<i>C. immitis</i>	200	25.17	25.81	<i>C. immitis</i>
248-09	<i>C. immitis</i>	200	36.08	37.73	<i>C. immitis</i>
249-09	<i>C. immitis</i>	200	17.62	17.73	<i>C. immitis</i>
250-09	<i>C. immitis</i>	200	19.92	21.28	<i>C. immitis</i>
251-09	<i>C. immitis</i>	200	22.95	21.74	<i>C. immitis</i>

4

5 <sup>#</sup> Confirmed by Sanger sequencing.

6

7

1

2 Table 5. Evaluation of archived CSF and pleural fluid samples by real time PCR for  
 3 *Coccidioides species*.

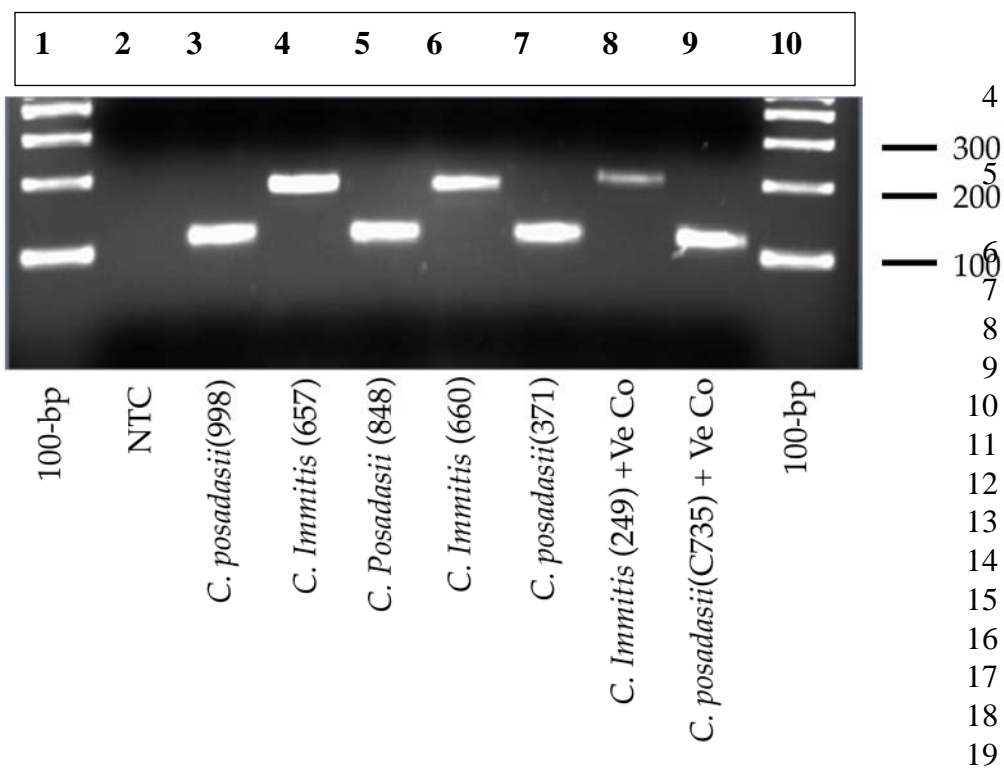
Sample ID	Serology Test Results			Duplex real-time PCR Test Results			
	Immuno-diffusion	Complement-Fixation	Interpretation	Mean Ct (Cy5)	Mean Ct (FAM)	Bicoid Ct	Interpretation
C15	IgG	1:2	POSITIVE	Undet	Undet	25.93	NEGATIVE
C16	IgG	1:16	POSITIVE	Undet	Undet	23.79	NEGATIVE
C18	IgG	1:4	POSITIVE	Undet	Undet	24.92	NEGATIVE
C26	IgG	1:16	POSITIVE	Undet	Undet	24.23	NEGATIVE
C43	IgG	1:128	POSITIVE	Undet	Undet	23.63	NEGATIVE
C49	IgG	1:32	POSITIVE	Undet	Undet	23.62	NEGATIVE
P6	IgM	Negative	NEGATIVE	Undet	Undet	23.94	NEGATIVE
P10	IgG	Negative	NEGATIVE	Undet	Undet	24.97	NEGATIVE
P12	IgG, IgM	1:16	POSITIVE	Undet	Undet	23.88	NEGATIVE
P18	IgG, IgM	Negative	NEGATIVE	Undet	Undet	24.20	NEGATIVE
P25	IgG, IgM	1:8	POSITIVE	37.93*	Undet	26.42	POSITIVE
P31	IgG	Negative	NEGATIVE	Undet	Undet	23.57	NEGATIVE
P36	IgM	Negative	NEGATIVE	36.89	Undet	23.65	POSITIVE
P39	IgG	Negative	NEGATIVE	Undet	Undet	23.90	NEGATIVE
P43	IgG, IgM	1:4	POSITIVE	Undet	Undet	23.80	NEGATIVE

- 1 The Ct values of this sample could only be obtained by diluting sample 10-fold, which
- 2 still revealed some PCR inhibition as mean Ct values for inhibition control (Bicoid) was
- 3 almost one log higher than the mean Ct values for other samples investigated.

1 Fig. 1. A modified conventional diagnostic PCR assay.

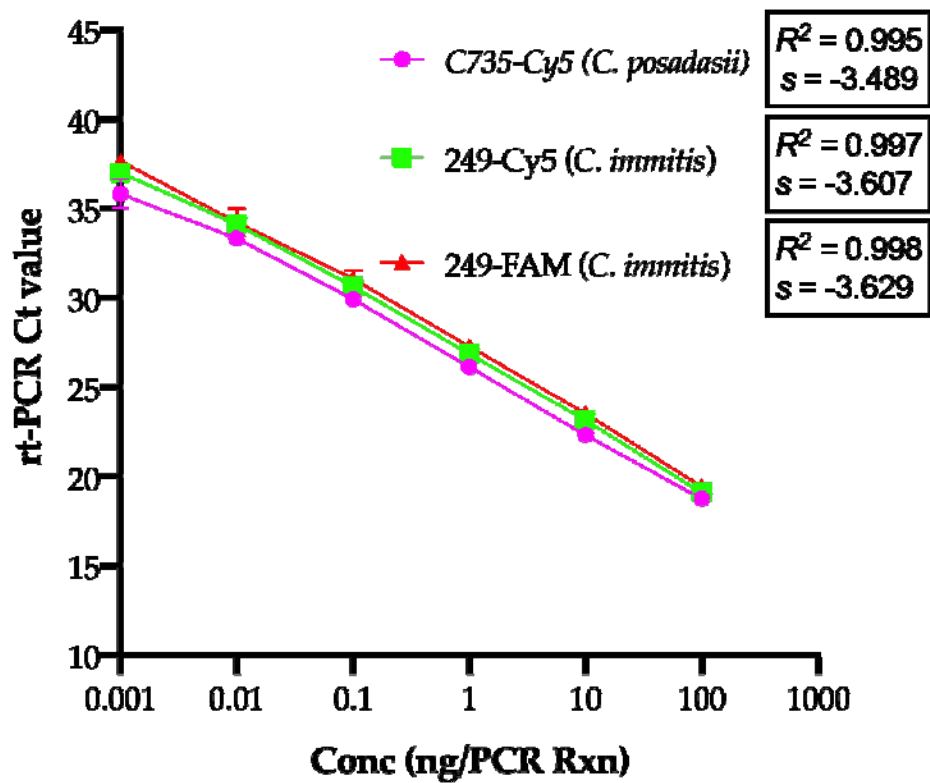
2

3

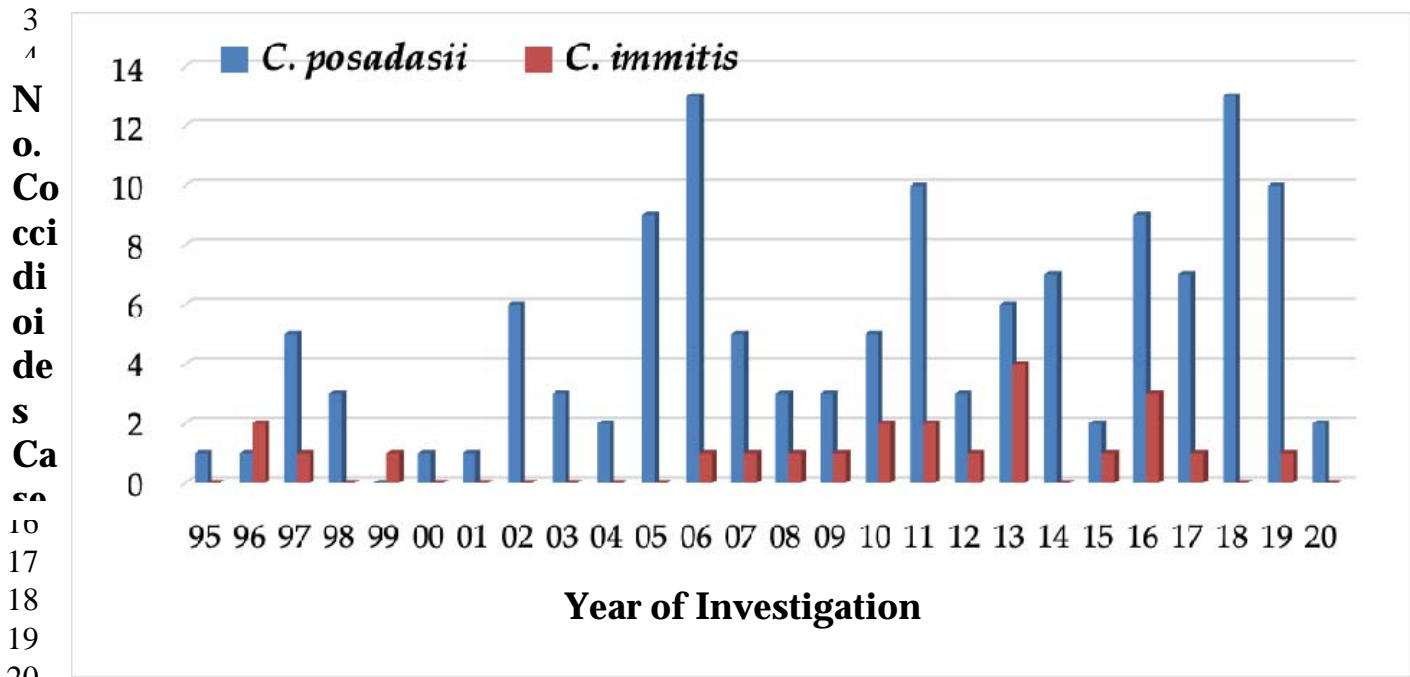


20  
21  
22  
23  
24  
25  
26  
27  
28  
29  
30  
31  
32

1 Fig. 2. *Coccidioides* species duplex real-time PCR assay sensitivity.  
2  
3  
4



1 Fig. 3. *Coccidioides* species investigated from 1995 to 2020 as part of reference diagnostic  
2 service



1  
2  
3  
4  
5

<b>Supplementary Table 1. Specificity Panel</b>				
<b>ISOLATE No.</b>	<b>ORGANISM</b>	<b>SOURCE</b>	<b>PRA2</b>	<b>CiC</b>
-	NTC	-	NEGATIVE	NEGATIVE
<b>Closely related mold species</b>				
M808	<i>Blastomyces dermatitidis</i>	MCC, NYSDOH	NEGATIVE	NEGATIVE
M809	<i>Blastomyces dermatitidis</i>	MCC, NYSDOH	NEGATIVE	NEGATIVE
18461-12	<i>Blastomyces dermatitidis</i>	MCC, NYSDOH	NEGATIVE	NEGATIVE
20694-12	<i>Histoplasma capsulatum</i>	MCC, NYSDOH	NEGATIVE	NEGATIVE
22276-12	<i>Histoplasma capsulatum</i>	MCC, NYSDOH	NEGATIVE	NEGATIVE
M109	<i>Sporothrix schenckii</i>	MCC, NYSDOH	NEGATIVE	NEGATIVE
K10	<i>Sporothrix schenckii</i>	MCC, NYSDOH	NEGATIVE	NEGATIVE
12998-12	<i>Chrysosporium</i> sp.	MCC, NYSDOH	NEGATIVE	NEGATIVE
M1512 (K25)	<i>Chrysosporium</i> sp.	MCC, NYSDOH	NEGATIVE	NEGATIVE
M1542 (K33)	<i>Paracoccidioides brasiliensis</i>	PHL, U.K."	NEGATIVE	NEGATIVE
<b>Distantly related mold species</b>				
17452-12	<i>Trichophyton rubrum</i>	MCC, NYSDOH	NEGATIVE	NEGATIVE
K2	<i>Trichophyton mentagrophyte</i>	MCC, NYSDOH	NEGATIVE	NEGATIVE
19616-12	<i>Trichophyton interdigitale</i>	MCC, NYSDOH	NEGATIVE	NEGATIVE
K3	<i>Microsporum gypseum</i>	MCC, NYSDOH	NEGATIVE	NEGATIVE
1304101	<i>Geomyces pannorum</i>	MCC, NYSDOH	NEGATIVE	NEGATIVE
K5	<i>Geomyces destructans</i>	MCC, NYSDOH	NEGATIVE	NEGATIVE
16341-12	<i>Aspergillus fumigatus</i>	MCC, NYSDOH	NEGATIVE	NEGATIVE
15817-12	<i>Aspergillus versicolor</i>	MCC, NYSDOH	NEGATIVE	NEGATIVE
15822-12	<i>Aspergillus terreus</i>	MCC, NYSDOH	NEGATIVE	NEGATIVE
13071-12	<i>Aspergillus nidulans</i>	MCC, NYSDOH	NEGATIVE	NEGATIVE
12745-12	<i>Wangiella dermatitidis</i>	MCC, NYSDOH	NEGATIVE	NEGATIVE
10461-12	<i>Penicillium pururogenm</i>	MCC, NYSDOH	NEGATIVE	NEGATIVE
13041-12	<i>Penicillium funiculosum</i>	MCC, NYSDOH	NEGATIVE	NEGATIVE
13446-12	<i>Fusarium spp</i>	MCC, NYSDOH	NEGATIVE	NEGATIVE
M831 (K12)	<i>Epidermophyton floccosum</i>	MCC, NYSDOH	NEGATIVE	NEGATIVE
<b>Distantly related yeast species</b>				
NIH444	<i>Cryptococcus gattii</i>	ATCC90028	NEGATIVE	NEGATIVE
NIH12	<i>C. neoformans</i> var. <i>neoformans</i>	MCC, NYSDOH	NEGATIVE	NEGATIVE
H99	<i>C. neoformans</i> var. <i>grubii</i>	MYCC, NYSDOH	NEGATIVE	NEGATIVE
K16	<i>C. albidus</i>	MYCC, NYSDOH	NEGATIVE	NEGATIVE
M49 (K17)	<i>Candida albicans</i>	ATCC22019	NEGATIVE	NEGATIVE
K19	<i>Candida tropicalis</i>	ATCC750	NEGATIVE	NEGATIVE
K18	<i>Candida parapsilosis</i>	ATCC22019	NEGATIVE	NEGATIVE
K19	<i>Candida tropicalis</i>	ATCC750	NEGATIVE	NEGATIVE
M146	<i>Candida krusei</i>	ATCC6258	NEGATIVE	NEGATIVE



M165	<i>Candida glabrata</i>	MCC, NYSDOH	NEGATIVE	NEGATIVE
M157	<i>Candida dubliniensis</i>	MCC, NYSDOH	NEGATIVE	NEGATIVE
M277	<i>Geotrichum candidum</i>	MCC, NYSDOH	NEGATIVE	NEGATIVE
771-07	<i>Trichosporon asahii</i>	MCC, NYSDOH	NEGATIVE	NEGATIVE
M161 (K22)	<i>Rhodotorula mucilaginosa</i>	MCC, NYSDOH	NEGATIVE	NEGATIVE
M78 (K24)	<i>Saccharomyces cerevisiae</i>	MCC, NYSDOH	NEGATIVE	NEGATIVE
<b>Bacterial Species</b>				
S-1	<i>Mycoplasma pneumoniae</i>	BCC, NYSDOH	NEGATIVE	NEGATIVE
S-2	<i>Pseudomonas aeruginosa</i>	BCC, NYSDOH	NEGATIVE	NEGATIVE
S-3	<i>Nocardia farcinica</i>	BCC, NYSDOH	NEGATIVE	NEGATIVE
S-4	<i>Streptococcus pneumoniae</i>	BCC, NYSDOH	NEGATIVE	NEGATIVE
C-735 (Co)	<i>C. posadasii</i>	MCC, NYSDOH	POSITIVE	POSITIVE
MYC249-09 (Co)	<i>C. immitis</i>	MCC, NYSDOH	POSITIVE	POSITIVE

- 1 ATCC = American Type Culture Collection; MCC = Mycology Culture Collection, New York
- 2 State Department of Health (NYSDOH); BCC = Bacterial Culture Collection (NYSDOH), PHL,
- 3 U.K; Public Health Laboratory, United Kingdom
- 4

Organisms	Isolate No. (ng/PCR rxn)	<i>PRA2-Cy5</i>			<i>CiC-FAM</i>		
		Day 1 Ct1/Cy2	Day 2 Ct1/Cy2	Day 3 Ct1/Ct2	Day 1 Cy1/Ct2	Day 2 Ct1/Ct2	Day 3 Ct1/Ct2
<i>C. immitis</i>	13-7701(10)	22.61/22.78	22.67/22.80	22.05/21.98	22.04/21.96	21.60/21.91	22.59/22.20
	13-2789 (10)	23.81/23.65	23.31/23.53	23.94/23.85	22.04/21.96	22.99/23.17	22.54/22.78
	664-98 (0.1)	29.45/29.45	30.56/30.25	30.23/31.84	30.15/30.39	30.09/30.40	30.84/30.09
<i>C. posadasii</i>	14-1599 (100)	18.84/18.99	18.70/18.68	19.37/19.89	0.0	0.0	0.0
	13-2793 (10)	24.03/23.82	23.61/23.67	22.53/22.43	0.0	0.0	0.0
	13-4872 (1)	27.81/27.70	27.00/26.96	26.90/29.29	0.0	0.0	0.0

1  
2  
3  
4

Organisms	Isolate No. (ng/PCR rxn)	<i>PRA2-Cy5</i>			<i>CiC-FAM</i>		
		Ct1	Ct2	Ct3	Ct1	Ct2	Ct3
<i>C. immitis</i>	13-7701 (1)	24.81	24.52	24.44	24.66	24.60	24.68
	13-2789 (10)	22.55	22.66	22.58	22.49	22.43	22.54
	664-98 (0.1)	29.97	29.77	29.79	29.49	30.65	30.84
<i>C. posadasii</i>	14-1599 (100)	19.37	19.89	19.84	0.0	0.0	0.0
	13-2793 (10)	22.53	22.43	22.84	0.0	0.0	0.0
	13-4872 (1)	26.23	26.50	26.90	0.0	0.0	0.0

5  
6  
7  
8  
9  
10  
11

1

Supplementary Table 4. Blinded Panel							
Blinded No.	DNA ng/PCR reaction	PRA2		CiC		Interpretation	Mycology No
		Ct1	Ct2	Ct1	Ct2		
1	1.0	0.0	0.0	0.0	0.0	<i>Cryptococcus grubii</i>	M1356
2	1.0	0.0	0.0	0.0	0.0	<i>Penicillium spp</i>	10461-12
3	1.0	0.0	0.0	0.0	0.0	<i>Aspergillus fumigatus</i>	16341-12
4	1.0	0.0	0.0	0.0	0.0	<i>Trichophyton interdigitale</i>	19616-12
5	1.0	0.0	0.0	0.0	0.0	<i>Paracoccidioides brasiliensis</i>	K34
6	10.0	0.0	0.0	0.0	0.0	<i>Aspergillus versicolor</i>	15817-12
7	10.0	0.0	0.0	0.0	0.0	<i>Chrysosporium spp</i>	12898-12
8	1.0	0.0	0.0	0.0	0.0	<i>Sporothrix schenckii</i>	M109
9	10.0	0.0	0.0	0.0	0.0	<i>Histoplasma capsulatum</i>	20694-12
10	1.0	0.0	0.0	0.0	0.0	<i>Blastomyces dermatitidis</i>	M809
11	1.0	27.13	27.15	0.0	0.0	<i>Coccidioides posadasii</i>	IDR12-6370
12	10.0	23.44	23.33	0.0	0.0	<i>Coccidioides posadasii</i>	IDR12-6062
13	10.0	22.27	22.02	0.0	0.0	<i>Coccidioides posadasii</i>	819-96
14	10.0	22.83	24.18	0.0	0.0	<i>Coccidioides posadasii</i>	801-04
15	1.0	25.27	26.12	0.0	0.0	<i>Coccidioides posadasii</i>	588-97
16	10.0	23.85	23.82	0.0	0.0	<i>Coccidioides posadasii</i>	750-95
17	10.0	23.19	24.49	0.0	0.0	<i>Coccidioides posadasii</i>	815-97
18	1.0	25.45	25.41	0.0	0.0	<i>Coccidioides posadasii</i>	IDR11-32674
19	10.0	22.68	22.88	0.0	0.0	<i>Coccidioides posadasii</i>	IDR11-32415
20	1.0	25.74	25.48	0.0	0.0	<i>Coccidioides posadasii</i>	IDR11-1613
21	10.0	23.13	23.66	0.0	0.0	<i>Coccidioides posadasii</i>	IDR11-5193
22	10.0	23.32	23.37	0.0	0.0	<i>Coccidioides posadasii</i>	IDR11-417
23	1.0	23.16	24.00	0.0	0.0	<i>Coccidioides posadasii</i>	IDR11-4299
24	10.0	22.40	23.10	21.07	21.76	<i>Coccidioides immitis</i>	131-96
25	1.0	24.20	25.41	22.95	23.93	<i>Coccidioides immitis</i>	MYC90247
26	0.1	29.18	29.24	28.41	28.78	<i>Coccidioides immitis</i>	MYC90245
27	0.01	31.54	31.55	31.00	31.32	<i>Coccidioides immitis</i>	MYC90244
28	1.0	25.66	25.71	25.05	25.02	<i>Coccidioides immitis</i>	MYC90243
29	1.0	24.11	24.14	23.39	23.51	<i>Coccidioides immitis</i>	MYC90242
30	10.0	21.45	21.16	20.21	19.98	<i>Coccidioides immitis</i>	MYC90246
31	0.1	28.79	28.49	27.82	27.72	<i>Coccidioides immitis</i>	MYC90251
32	10.0	22.80	23.60	21.50	22.27	<i>Coccidioides immitis</i>	MYC90250
33	0.1	29.00	29.01	28.12	28.36	<i>Coccidioides immitis</i>	669-98
34	10.0	23.30	23.97	22.03	22.68	<i>Coccidioides immitis</i>	667-98
35	10.0	18.66	18.55	17.24	17.19	<i>Coccidioides immitis</i>	MYC90249
36	10.0	20.73	20.70	19.54	19.53	<i>Coccidioides immitis</i>	MYC90249
37	10.0	21.96	21.79	20.73	20.52	<i>Coccidioides immitis</i>	MYC90248
38	0.0	0.0	0.0	0.0	0.0	Water	-
39	0.1	28.81	28.50	27.78	27.72	<i>Coccidioides immitis</i>	646-99
40	0.1	28.43	28.71	33.31	33.21	<i>Coccidioides immitis</i>	779-97
41	10.0	21.84	22.24	20.61	20.87	<i>Coccidioides immitis</i>	662-98
42	10.0	22.31	24.81	23.62	20.87	<i>Coccidioides immitis</i>	366-96
43	0.1	29.92	29.46	29.02	28.35	<i>Coccidioides immitis</i>	664-98
44	1.0	25.04	25.50	24.41	24.85	<i>Coccidioides immitis</i>	IDR11-21091

45	10.0	23.27	22.50	22.38	21.83	<i>Coccidioides immitis</i>	IDR11-8302
Co-Cp	0.1	30.52	30.54	0.0	0.0	<i>Coccidioides posadasii</i>	C-735
Co-Ci	0.1	29.51	29.32	30.39	30.39	<i>Coccidioides immitis</i>	MYC249-09

1  
2  
3  
4